

# A CITY OF FIRSTS IN LIFE SCIENCE AND HEALTHCARE

**Home to the UK's fastest growing regional economy, Manchester has established a strong reputation as the heart of the Northern Powerhouse and a competitive place to do business.**

Manchester has come a long way since Rutherford first split the atom, Alan Turing lectured here and even since Andre Geim and Konstantin Novoselo peeled their first layer of Graphene. We have pioneered new treatments such as the Bionic Eye and Proton Beam Therapy at The Christie and have continued to innovate ever since.

Home to world leading research and development assets like the Manchester Cancer Research Centre, the National Biomedical Treatment Centre (NIHR) and the UK Biobank, the city-region continues to be at the forefront of innovative treatment to revolutionise patient care.

As the first UK city to have devolved control of its £6 billion health and social care budget, the region has developed a more streamlined innovation adoption pathway overseen by Health Innovation Manchester, with the aim of delivering new health and social care solutions at pace and scale, representing a unique opportunity to life science companies.

Through NorthWest EHealth (NWEH), Manchester also boasts world class clinical trial design and management, helping companies to safely accelerate critical treatment programs to patients and is leading the way in the innovative and trustworthy use of routinely collected healthcare data for clinical trials. This combined with the city-region's digital capabilities and infrastructure including the Christabel Pankhurst Institute for Health Technology, provides investors with an experienced digital testbed and diverse expertise to call upon.

**£6 BILLION  
LOCAL HEALTH  
AND SOCIAL  
CARE BUDGET**

**2.8 MILLION  
POPULATION  
INTEGRATED  
CARE RECORD**

## LIFE SCIENCE & HEALTHCARE HIGHLIGHTS



**Largest**

The Christie - Europe's largest single site cancer hospital



**NHS**

**1<sup>st</sup>**

fully e-enabled NHS trust in England and global digital exemplar hospital - Salford Royal NHS Foundation Trust

**1<sup>st</sup>**

UK's first WHO age friendly designated city region



**National HQ**

for the UK Biobank

**Home**

to the North West Genomic Laboratory Hub - hosted by Manchester NHS Foundation Trust



**Quickest**

recruitment time to target for clinical trials in the UK

## IN GOOD COMPANY

**Abbott**

**AFFINITY**  
BIOMARKER LABS  
Academia | Biopharma | Clinical

**Agilent Technologies**

**Chiesi**

**Elucid**

**genedrive**

**HOLOGIC**

**intertek**

**KRATOS**  
ANALYTICAL  
A SHIMADZU GROUP COMPANY

**Lonza**

**Mölnlycke**

**proteintech**  
Academia | Biopharma | Biotech

**PUSH DOCTOR**

**QIAGEN**

**SEDA**  
Pharmaceutical Development Services

**TAKAGI**

**Vernacare**

**Yourgene Health**

**zilico**  
real-time medical diagnostics



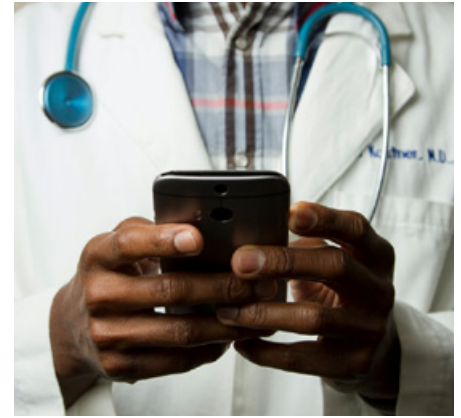
## ONCOLOGY AND ADVANCED THERAPIES

Manchester hospitals were among the first NHS trusts in the UK to offer pioneering CAR-T therapy, revolutionising the treatment of leukaemia and lymphoma. Organisations such as The Christie, The Manchester Cancer Research Centre, The University of Manchester's Stoller Biomarker Discovery Centre and NIHR Biomedical Research Centre have helped to establish Manchester as a leading location for genomics, proteomics, and biomarker development for diagnostic and therapeutic applications, improving cancer care and beyond.



## DIAGNOSTICS AND HEALTHY AGEING

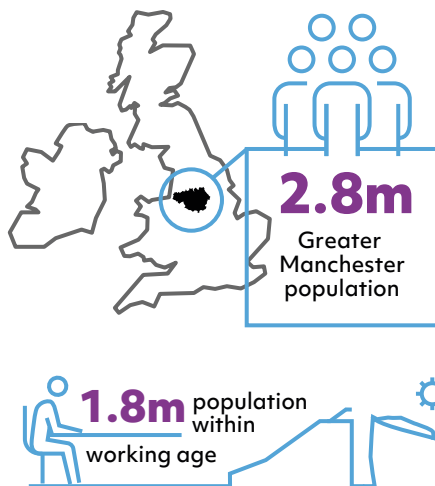
Manchester has a rich history in diagnostic technologies for preventative and personalised medicine. Recognised by the UK government as 'an exemplar site for new diagnostic and screening methodologies', the city-region supports faster uptake and deployment of new healthcare innovations. To further complement this, Manchester has also been awarded a 'High Potential Opportunity' (HPO) designation by the Department for International Trade, acknowledging the role diagnostics plays to support healthy ageing from birth. Manchester is the place to validate, deploy and scale your new diagnostic devices.



## DIGITAL HEALTH

Home to the first fully e-enabled NHS trust in England and a global NHS digital exemplar, healthcare companies based in Manchester can benefit from a fully integrated care record for 2.8 million patients enabling a deeper understanding of disease conditions, clinical trials and health analytics for rapid market entry. In addition, Manchester has the UK's largest regional creative digital and tech hub with strengths across technologies such as Cyber, AI and Data meaning the city is uniquely placed for companies to explore and deliver their digital strategies for connected and integrated healthcare delivery. The region's capabilities in bio-informatics, predictive healthcare modelling, data science and AI support and assist with risk, studying causes of disease and disability, and identifying new and effective treatments.

## MANCHESTER KEY FACTS



**UP TO 18%**  
lower operating costs than London

**3.1%**  
economic growth 2015-2022

**£89.5bn**  
largest GVA outside London



**200**  
destinations connected by Manchester Airport



**60%**  
of all UK businesses within 2hr drive time



**7.9m**  
people aged 16+ within one hour commute



**26**  
Nobel Laureates

**124,000**  
students  
across five universities

## GET IN TOUCH

MIDAS, Manchester's dedicated inward investment agency, offers an extensive, free and confidential package of advice and assistance for potential investors and location consultants. MIDAS' services are available to companies of all sizes that wish to relocate to or expand within Manchester.

To find out how we can help you, contact



**Andrea Winders**  
Head of Business Development  
Life Sciences

✉ [andrea.winders@midas.org.uk](mailto:andrea.winders@midas.org.uk)  
☎ +44 (0) 7718 301235  
🐦 @MIDAS\_LifeSci  
🐦 @MIDAS\_MCR  
🌐 [investinmanchester.com](http://investinmanchester.com)



**MIDAS**  
[investinmanchester.com](http://investinmanchester.com)

**NORTHERN POWERHOUSE**