



First off, Happy New Year from all of us at MIDAS.

I am looking forward to the opportunities for Greater Manchester in 2025.

The upcoming [MIPIM conference](#) in Cannes and SxSW in Austin in March will allow us to tell the world all that is great in Greater Manchester. We also have trade missions to the US and Japan to look forward too.

This year promises transformative growth across these industries, with more major companies planning to expand into our great city-region. This includes our innovation districts, and opportunities in AI, fintech, and advanced manufacturing and materials.

We look forward to working with our partners in the year ahead.

Joe Manning

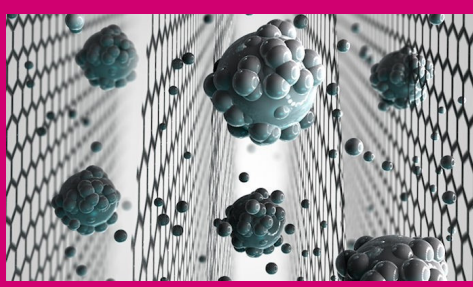
Managing Director, MIDAS, Manchester's Inward Investment Agency

Highlights & Insights



Land deal unlocks major Manchester life science development

[Read more >](#)



Graphene Innovation Manchester Announce Launch of World's First Commercial Production of Graphene

[Read more >](#)



Wigan set for first new train station in 60 years at Golborne

[Read more >](#)



100% tenancy reached with National Highways agreeing latest deal

[Read more >](#)

Greater Manchester completes work to bring buses back under local control



Greater Manchester has heralded a new era in public transport, transforming how people get around the city-region. Following a phased approach, all bus services – totalling 577 routes, 1,600 buses and accounting for more than 160 million trips per year – are now under local control and accountable to the people, businesses and communities of Greater Manchester.

[Read more >](#)

Wider view



Discover the Greater Manchester Green Finance Report, commissioned by MIDAS, a comprehensive report highlighting the vast opportunities for organisations to become part of the thriving Green Finance community.

If your business is looking to align its financial strategies with ethical goals, this is a must-read. Discover why leading names like The Co-operative Bank plc, NatWest Group, Barclays, HSBC, Yorkshire Building Society, PwC, Deloitte, and others are actively contributing to making Greater Manchester a hub for sustainable business.

[Sign up for the report here](#)

Culture Spotlight



January 22nd 2025
Lunar New Year celebration

The annual Lunar New Year celebration has become a highlight of Manchester Museum's calendar and this year's event promises music, dance, food and more as we welcome the year of the snake.

The celebration will include a range of exciting performances at the museum, from a lion dance, traditional Chinese dance and choir singing to K-pop and C-pop.

Did you know...



Over 200 Languages Are Spoken In The City –

Manchester is the most multilingual city in the UK. With over 200 languages spoken in Manchester everyday, the region is considered to be one of the most linguistically diverse cities in the world.



[LinkedIn](#)



[Twitter](#)

Need support for your business? [Get in touch >](#)

