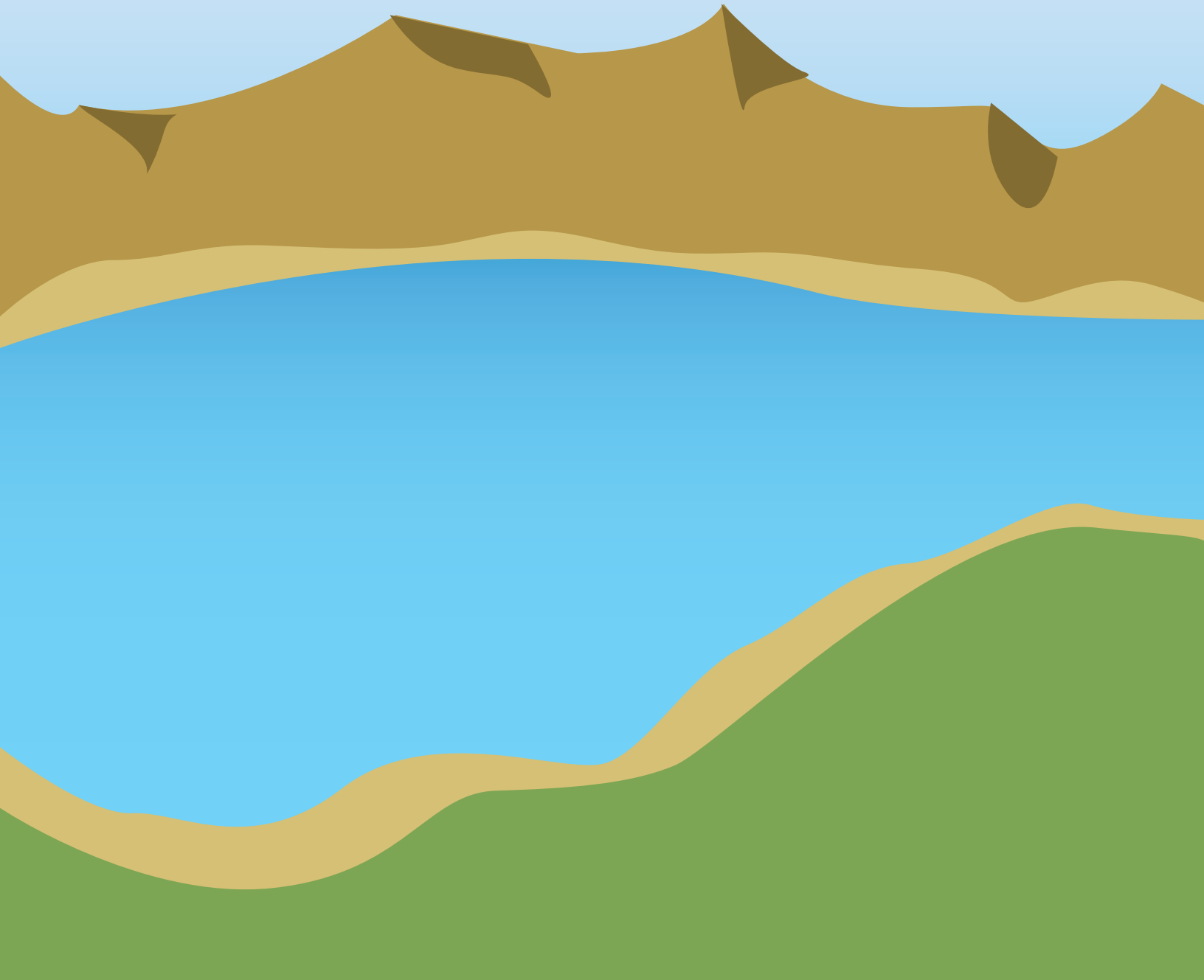




Quail Creek State Park

Junior Ranger Activity Guide



Welcome to Quail Creek State Park

We're so glad you want to become a Junior Ranger.



Being a Junior Ranger is a big responsibility. Here are some things you need to do to earn your Junior Ranger Badge and Certificate:

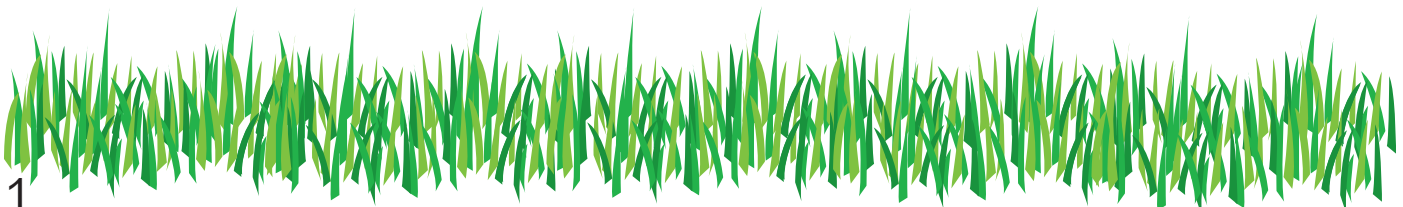
- ❶ If you are between the ages of five and nine, complete five or more activities in this book. If you are between the ages of 10 and 12, complete eight or more activities in this book. (It is OK for your Mom and Dad to help)
- ❷ Next, pick up one small bag of litter from around the park. Litter picked out of trash cans or cars does not count. Bring it to a park ranger and the ranger will check it and sign this activity guide.
- ❸ When everything is completed you will receive an official Quail Creek State Park Junior Ranger Badge and Certificate of Achievement!



**I certify that the Litter Patrol
was completed.**



Park Ranger



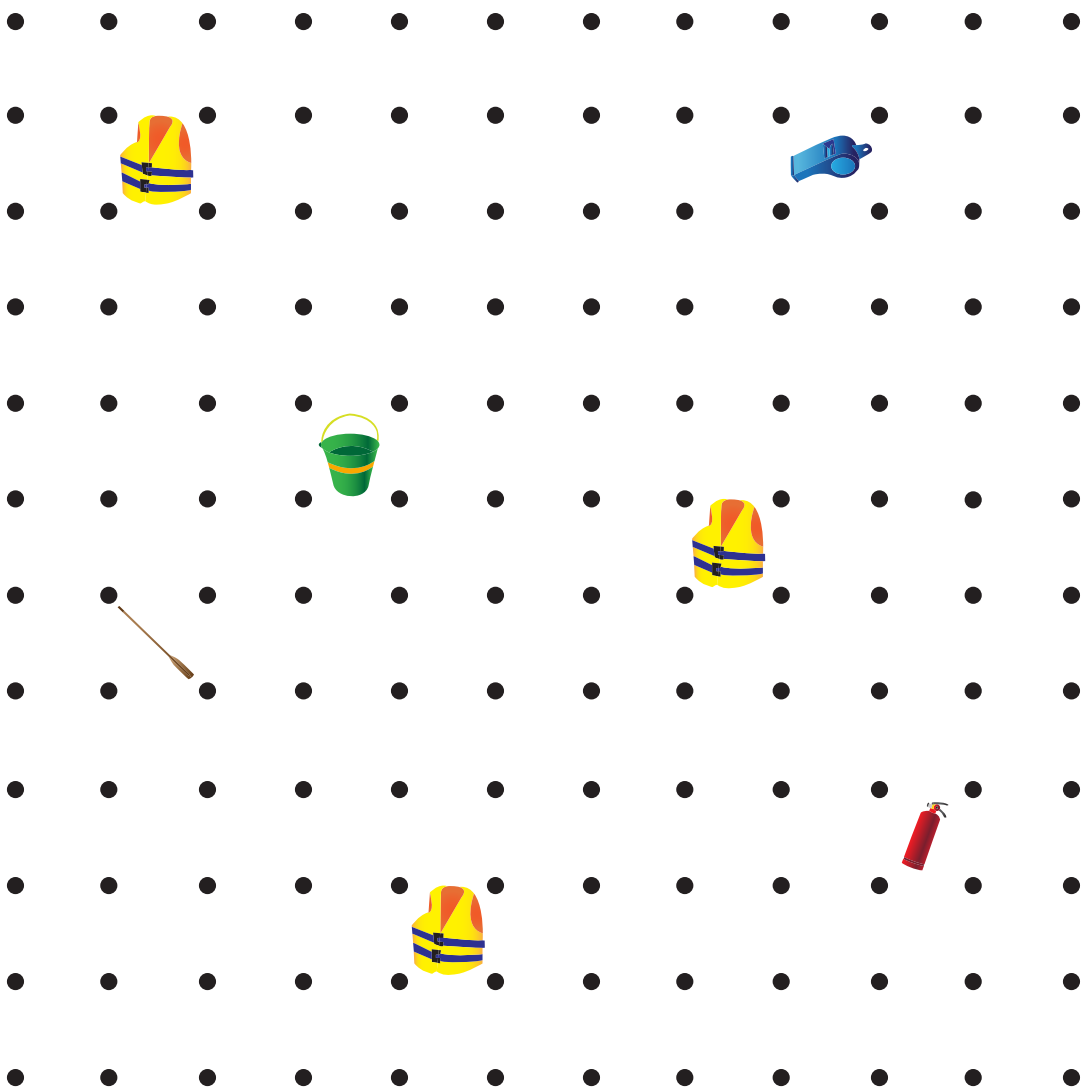
What is missing in this picture?



Did you know anyone under the age of 13 must wear a lifejacket on a boat at all times? Draw a lifejacket on Tom and Nancy, then color. Utah State Park rangers recommend everyone on a boat wear a lifejacket, even your Mom and Dad!

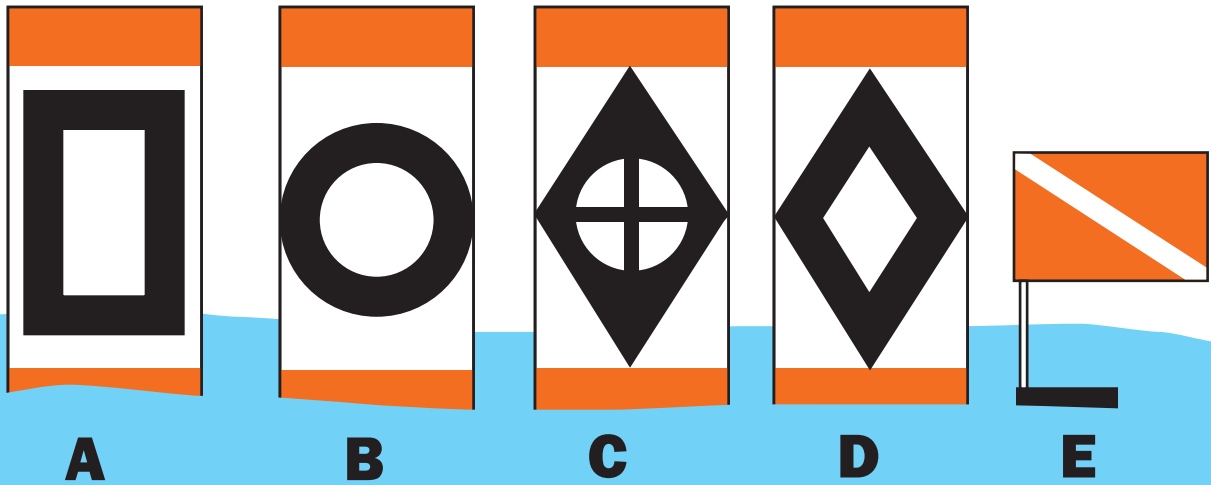
Boat Safety Equipment Hunt

Find the safety equipment needed on your boat. Take turns connecting two dots together. Lines go across or down, but not diagonally. Complete as many squares as you can. Initial each square as you complete one, and take another turn. Capture as many pieces of safety equipment as you can. Blank squares are worth 1 point. Squares with equipment in them are worth more: lifejackets are worth ten (10) points, and oar, whistle, bail bucket and fire extinguisher are worth five (5) points.



BUOYS - Signposts of the Water

What are these buoys telling you?



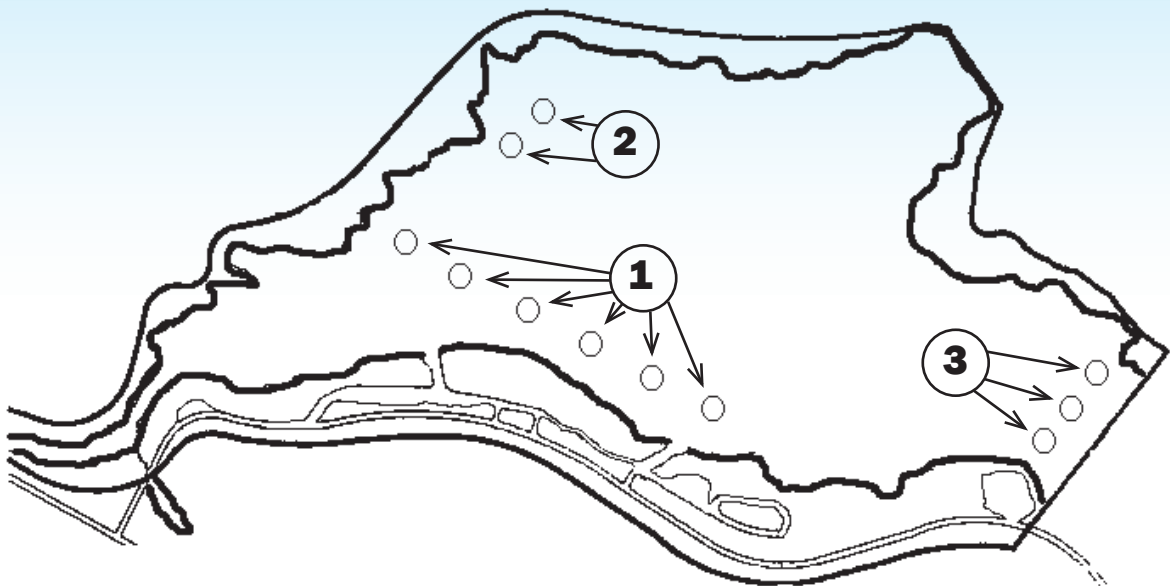
_____ **Boats Keep Out**

_____ **Dive Flag**

_____ **Information**

_____ **Slow No Wake**

_____ **Danger**



Which of these buoys are found on Quail Creek Reservoir?

1. _____ 2. _____ 3. _____

Some Interesting Facts About Quail Creek

When you are a Junior Ranger, you need to know some facts about Quail Creek. Try this word match to expand your knowledge. Answers are found on the rock monument, and on signs in the park and near the south dam.

(Write or circle the correct answer.)

1: When Quail Creek is full, the lake elevation level is at _____ feet.

2,868 2,985 3,064 3,143

(This means at its deepest the lake is about 160 ft. deep)



2: Quail Creek State Park was dedicated on September 20, _____.

1983 1984 1985 1986

3: The water surface area of the reservoir is _____ acres when full.

350 465 535 640

4: We have two dams at Quail Creek State Park one is a(n) _____ embankment dam and one is a roller compacted _____ dam.

earthfilled beaver concrete

5: If you walked all around the lake, you would have hiked _____ miles.

3 5 8 11

6: The reservoir has a carrying capacity of _____ acre-feet of water when full.

25,670 40,242 47,108 56,331

(That equals 13,112,989,276 gallons of water)

7: The main dam is _____ feet long and _____ feet high, whereas, the south dam (or dike) is _____ feet long and _____ feet high.

78 154 202 795 895 2,000

8: The south dam broke during this holiday, _____ 1989, and was rebuilt in 1990.

Memorial Day Independence Day New Years Day Labor Day

(It happened just after midnight at 12:30 a.m.)

With these facts you can impress your family and friends. Perhaps you may find some other interesting facts to share.

Wildlife Detective

The best time to see wildlife in the park is usually at dawn and dusk. Snakes and lizards like to lie in the sun until midmorning or until they get too hot. Other animals are active during the night. Even though you may not see any animals, you can look for clues they leave behind. The easiest clues are their tracks. If the track is not clear you can look at the pattern they make. Other clues that an animal was in the area are: nests, burrows, feathers, fur, chewing, diggings and “scat” or poop.

As a ranger, you should know what animals are around your area. Here are pictures of seven animals and their tracks. See if you can match the animal to its track. After finishing this exercise, see if you can find any of these tracks in the park.



Kangaroo Rat



Raven



Deer Mouse



Black-tailed Jackrabbit



Spotted Skunk



Gambel's Quail



Mountain Lion



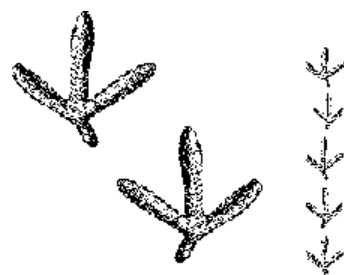
Coyote



1. _____



2. _____



3. _____



4. _____



5. _____



6. _____

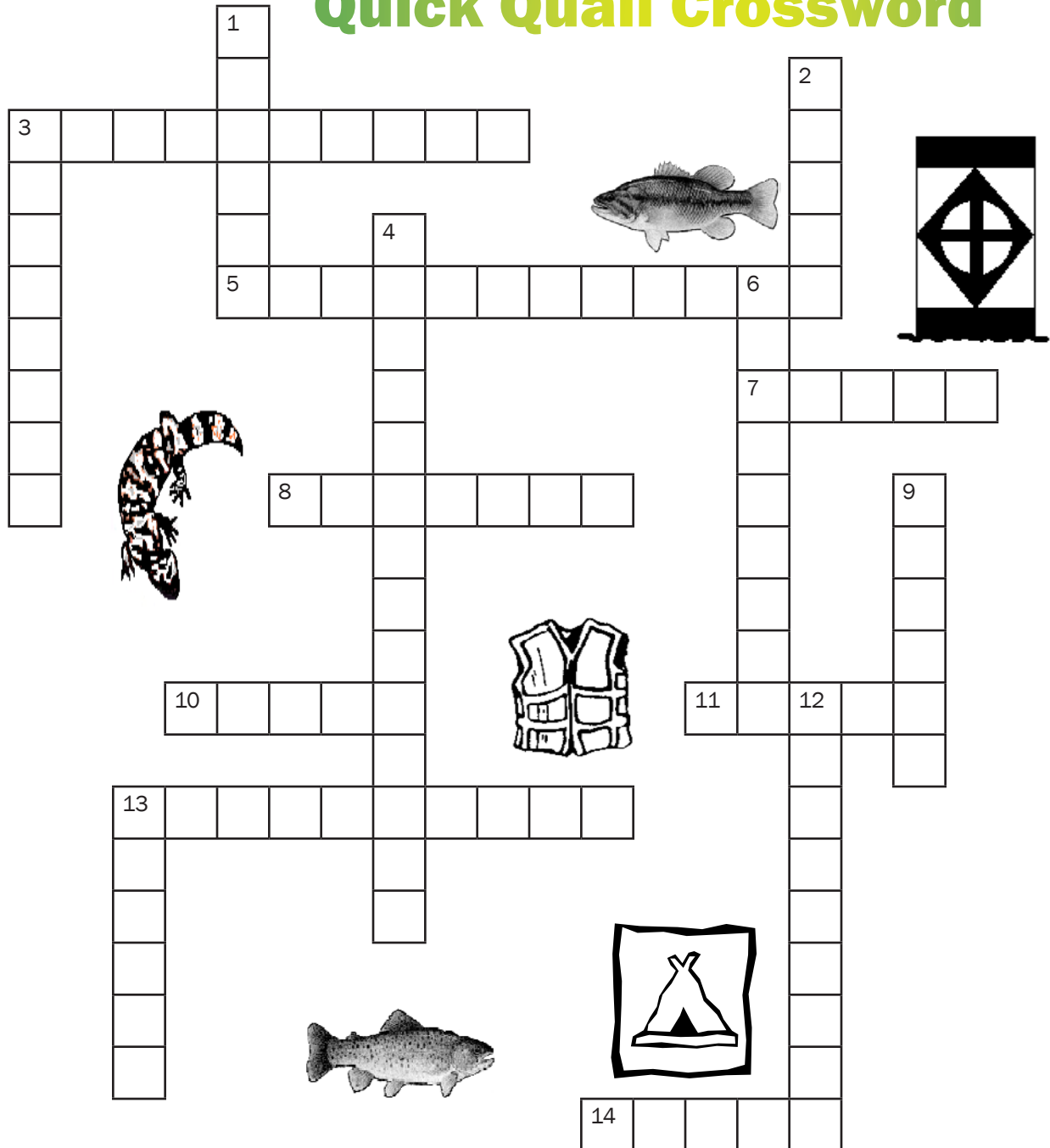


7. _____



8. _____

Quick Quail Crossword



Across

- 3: Four state parks are in this Utah county: Quail Creek, Sand Hollow, Gunlock and Snow Canyon
- 5: These are the largest lizards in the U.S. and Utah.
- 7: When the temperature is 100°F, you will want to do this.
- 8: What you are doing if you set up a tent and build a fire?
- 10: Quail Creek is not like the Great SALT Lake, but is a _____ water lake.
- 11: One type of this fish is named after a sight you can see when it rains. (State record is 26 lbs. 2 oz.)
- 13: Everyone must have one of these on a boat with them, and must be on if you are 12 years old or younger.
- 14: When camping some people sleep in these?

Down

- 1: One of the favorite activities to do on the water behind a boat.
- 2: These are the street signs of the water.
- 3: Boats must go this speed when within 150 feet of other boats, people in the water, and anglers.
- 4: This is a favorite fish to catch at Quail Creek. (The state record is 10 lbs. 20 oz. 24 1/4 in. long)
- 6: Quail Creek is known as a _____.
- 9: This Indian tribe has been here hundreds of years.
- 12: You get great views of the lake at these points along the side of the road.
- 13: Boats must have their navigation _____ on between sunset and sunrise.

Walking Around in Time

A Geological Study of Quail Creek State Park

Read the clues and match them to the correct answer listed at the bottom. One answer is used twice

1. Picture stone or landscape stone is naturally stained by _____. This staining is caused by mineralized ground water that moves through the rock and leaves the oxides behind in colorful patterns.
2. This mineral, _____, breaks down into a soft, powdery soil, generally favored by microscopic life forms. It is soft, can be easily scratched by a fingernail, and it is easily cleaved or parted in one direction.
3. _____ are formed from the compression of rock, in which rock layers are pushed over the top of themselves.
4. The dissolving of this mineral, _____, in water, was part of the cause of the disastrous failure of the Quail Creek's south dam.
5. The large round boulders come from Pine Valley Mountain. Most are _____ monzonite porphyry, a coarse-grained, intrusive igneous rock similar to granite.
6. The Virgin _____ is like imagining a book that is bent into an arch. Cut away the top of the arch and you can see into the core of the book. In this case, you get to look back in time through the different layers of rock. The deeper you go, the further back in time you are.
7. Rock formations seen at Quail Creek were formed during the _____ age of earth's history. It includes the Moenkopi and Chinle formations. The age of these rocks are between 208 million to 245 million years old.
8. Quail Creek is positioned in four _____ plain levels. They are the Shrabkaib, Upper Red Member, the Shinarump Conglomerate, and the Petrified Forest. The first two are called tidal flat, and the last two are both river and flood plain.
9. Microscopic life forms create a delicate _____ made up of algae, lichens, fungi, and mosses. This black soil is fragile and can easily be damaged.

ANTICLINE

QUARTZ

GYPSUM

TRIASSIC

THRUST FAULTS

SEDIMENTARY

CRYPTOBIOTIC CRUST

IRON MANGANESE

Sandstone: A Rainbow of Color

The sedimentary rock here comes in many colors. How many colors can you identify or find?

Black	<input type="checkbox"/>	Pink	<input type="checkbox"/>	White	<input type="checkbox"/>
Brown	<input type="checkbox"/>	Red	<input type="checkbox"/>	Purple	<input type="checkbox"/>
Orange	<input type="checkbox"/>	Yellow	<input type="checkbox"/>	Gold	<input type="checkbox"/>
Green	<input type="checkbox"/>	Blue	<input type="checkbox"/>	Other Colors:	<input type="text"/>

Look at the rocks around you and answer the following questions:

Can you find some of these rocks? Sandstone ☐ Lava ☐ Gypsum ☐ Quartz ☐

Can you skip a rock on the water? Yes ☐ No ☐ How many times did it skip?

Can you see a rock that is bigger than a ...? Motorcycle ☐ Car ☐ Truck ☐ House ☐

Now, find one rock.

How strong is your rock?

How does your rock feel? Heavy ☐ Light ☐ Rough ☐ Smooth ☐

What does it look like? Pretty ☐ Plain ☐ Ugly ☐

Do you think this rock has been underwater? Yes ☐ No ☐



Since rocks in state parks cannot be taken home, choose a rock and draw it below.

BOATING WORD SEARCH

D F P A S I D F P T S P E S D F P P Q W
 L Z R A M P H B S K I F L A G N O M O P
 S Q J E D F P S W M D D F P X P O L T F
 D P F D T A I H E R F J I F R O L T U D
 P Q E Z H U N B E D V P Z D R O L R O I
 L F X E C B M G R G F D O I H G M A P K
 I Z D K D D N D E D S K N D B T W E E C
 F L N Z Q A P P S R T G N J U P O R E O
 E P A X R M N F T J P A S L O T F A K L
 J K V X S O D D O L S F L W Y K P D S N
 A E I Z B F N N P B C K D S D P E E T U
 C E G D P C R V F R J H E F P F W L A G
 K R A Z F W Q J D F O G P E U D E L O Y
 E C T S D Y I N P F D X Z P S T A O B D
 T L I S W P J K Z K Q D I F F L I R U F
 K I O C K P F D A P F D N M M D S T R P
 P A N Z A C D D R N H Q L R I U D N P T
 F U P F D U O T I N F O R M A T I O N C
 D Q C J E T K D M K I N Y G R C Y C B M
 S T H G I L V P F D D F P H I J R P F D

Circle the words above from the list below. Good Luck!

ramp
 navigation
 information
 buoy
 boats

speed and proximity
 ski flag
 ranger
 mooring
 controlled area

danger
 lifejacket
 docks
 boats keep out
 lights

Get extra points if you find these three state parks:

Quail Creek

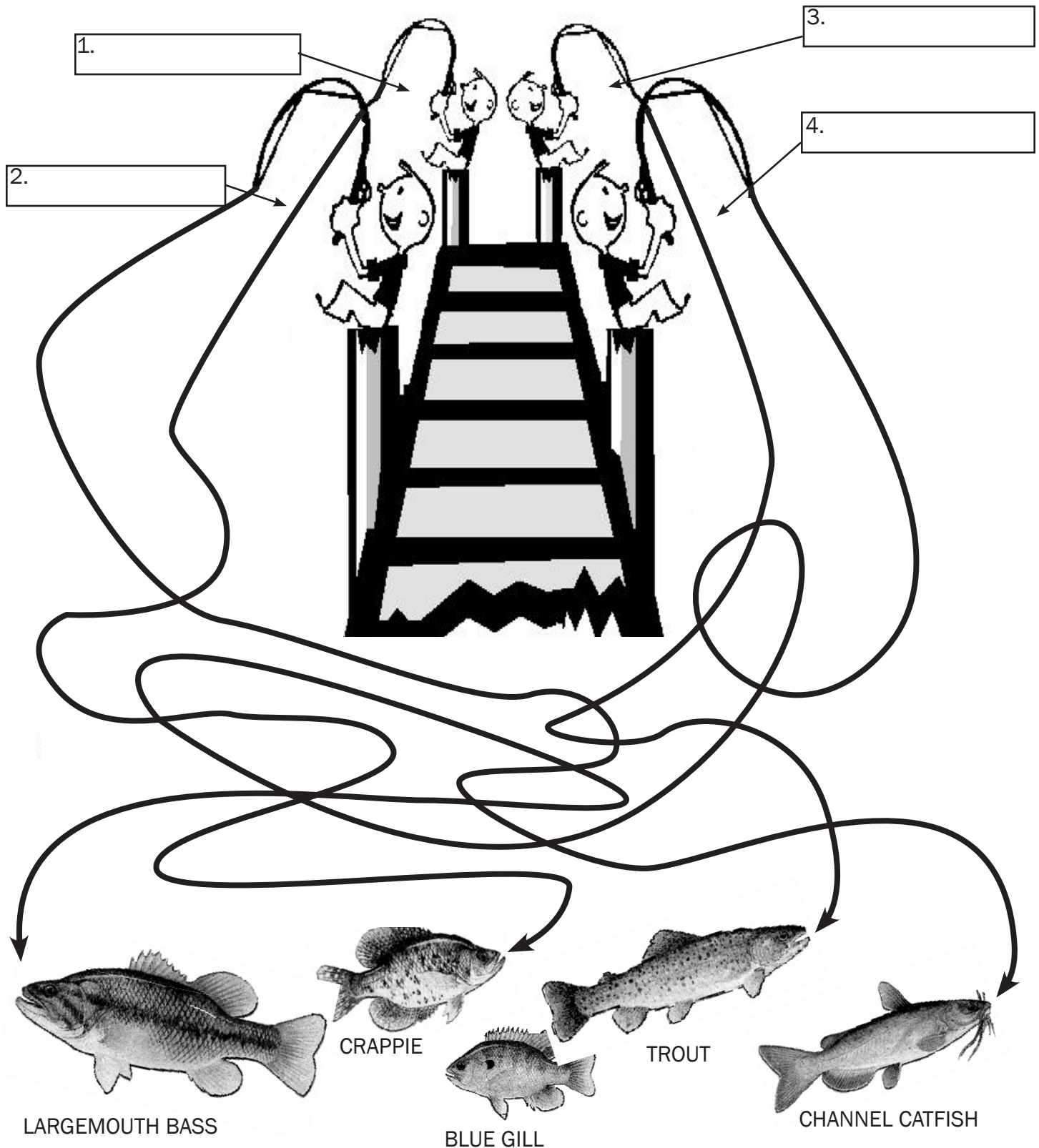
Sand Hollow

Gunlock

How many PFDs did you find?

Marissa's Missing Brothers

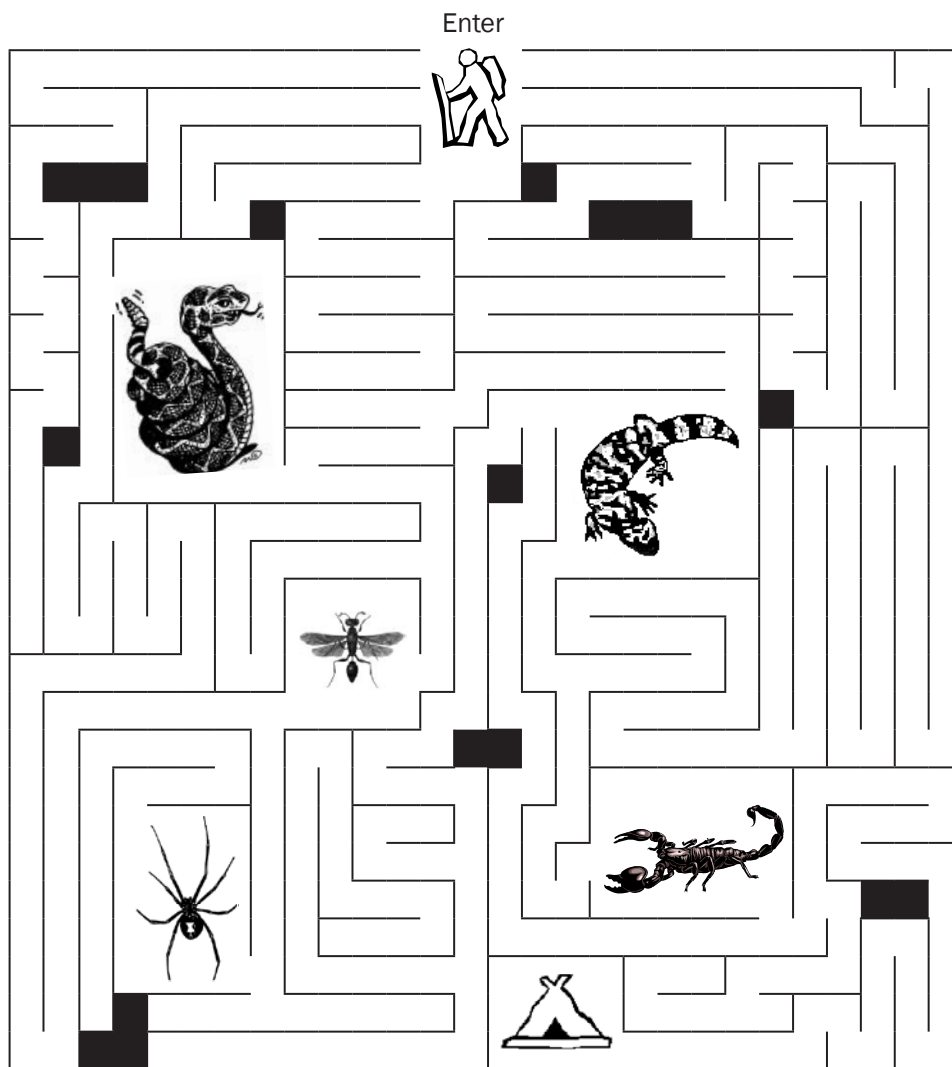
Marissa has lost her four brothers. As a Junior Ranger, you must find them. Joseph is fishing for bass. Grant is fishing for trout. Nathan is fishing for crappie, and Michael is fishing for catfish.



These are the five types of fish found in Quail Creek Reservoir.

Can You Find Your Way Back To Camp?

Avoid the poisonous creatures of Quail Creek. The rattlesnake, gila monster, scorpion, wasp and black widow spider can make you very sick. Do not stick your hands under rocks or bushes without looking. Remember wild animals are scared of you too and will defend themselves. With a little bit of caution, everyone can be safe and enjoy the outdoors. Follow these steps if you encounter a creature you do not know about: (1) Move away (2) leave it alone (3) tell an adult. Remember, this is their home.



Answers:

Buoy Signs - A) Danger B) Slow No Wake C) Boats Keep Out D) Danger E) Dive Flag 1) Slow No Wake 2) Danger 3) Boats Keep Out

Quail Creek Facts - 1) 3,143 2) 1985 3) 640 4) earthfilled, concrete 5) eight 6) 40,242 7) 985 and 202, 2,000 and 78; 8) New Years Day

Wildlife Detective - 1) Coyote 2) Spotted Skunk 3) Gambel's Quail 4) Raven 5) Kangaroo Rat 6) Deer Mouse 7) Black-tailed Jackrabbit 8) Mountain Lion

Quick Quail Crossword - Across 3) Washington 5) Gila Monsters 7) Swim 8) Camping 10) Fresh 11) Trout 13) Lifejacket 14) Tents — Down 1) Skiing 2) Buoys 3) Wakeless 4) Largemouth Bass 6) Reservoir 9) Paiute 12) Overlooks 13) Lights

Walking Around in Time - 1) Iron Manganese 2) Gypsum 3) Thrust Faults 4) Gypsum 5) Quartz 6) Anticline 7) Triassic 8) Sedimentary 9) Cryptobiotic Crust

Boating Word Search - 30 PFDs

Marissa's Missing Brothers - 1) Nathan 2) Michael 3) Grant 4) Joseph

Quail Creek State Park

Junior Ranger Pledge

In acceptance of this badge, I acknowledge I will wear it with pride and do my best to represent and serve Quail Creek State Park and my community by being actively involved as a responsible friend, performing service and being safe both on the water and the land.

I will not disturb wildlife or take rocks, plants or animals from the park.

I will leave all state parks and other natural areas a little better by picking up litter, staying on trails and safely exploring nature.

I understand my responsibility is to lead by example and be a good role model for others to follow.

Therefore, I _____, hereby accept this badge as a Junior Ranger at Quail Creek State Park.

Issued to me on the _____ of _____, 20____



Signed _____
(Ranger)



Utah State Parks Mission:

To enhance the quality of life by preserving and providing natural, cultural, and recreational resources for the enjoyment, education and inspiration of this and future generations.

Address inquiries to:

Quail Creek State Park
472 N. 5300 W.
Hurricane Utah 84737
Tel: (435) 879-2378

or

Utah State Parks and Recreation
P.O. Box 146001
Salt Lake City, Utah 84114-6001
Tel: (801) 538-7220 or (877) UT-PARKS
stateparks.utah.gov

Your park fees provide for the care, protection and enhancement of this park.