



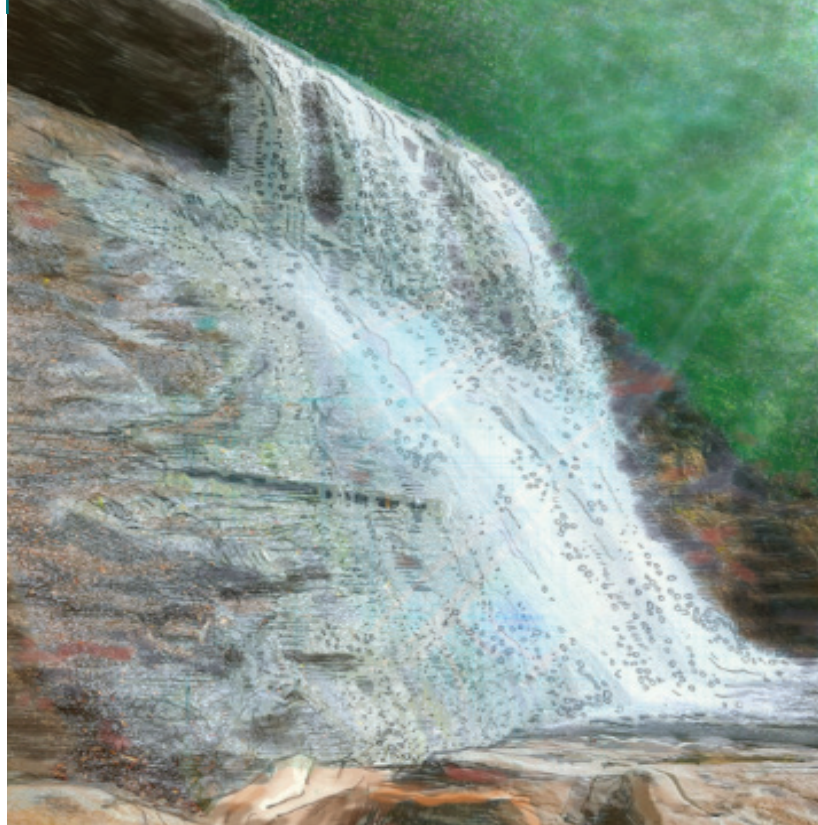
HIGH FALLS

Also known as Cullowhee Falls, the rushing water of this falls descends into a gorge cut by the West Fork of the Tuckasegee River. Travel NC Hwy 107 North for 6.4 miles. Turn left on Pine Creek Road. Travel 2.0 miles to the well-marked trailhead on the right.



PINES RECREATION AREA

Spend the day swimming, paddle boarding, fishing, and picnicking on pristine Lake Glenville with an elevation 3,494 feet. Follow directions for High Falls (above). Pines beach and facilities are across Pine Creek Road from the High Falls trailhead.



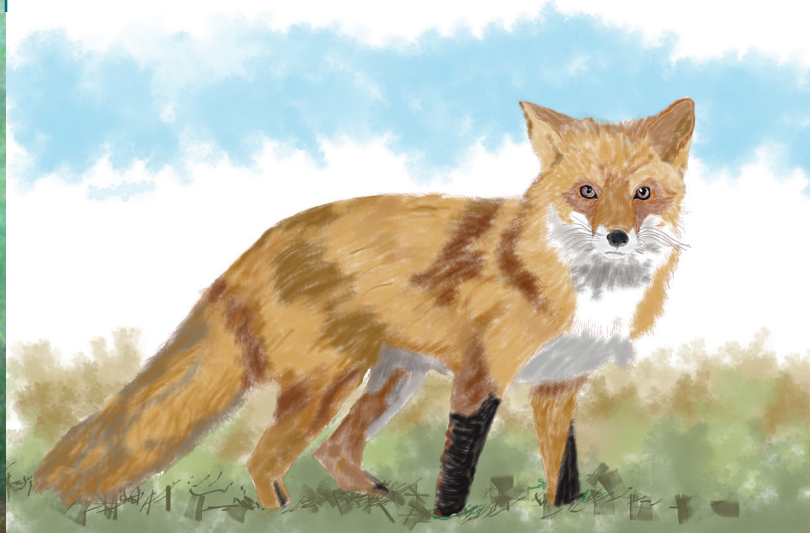
SILVER RUN FALLS

Enjoy this 25-foot waterfall and popular swimming hole in the Nantahala National Forest. Travel south on NC Hwy 107 for 4.1 miles. Park in the designated gravel pull-off on the left and take a short walk into the woods to view the falls. Bonus trip: Double up with Whitewater Falls! Just continue south on NC Hwy 107 another 5.2 miles to Wigington Road, turn left, and follow signs to the Whitewater Falls (on the right in 3.4 miles).



ZACHARY TOLBERT HOUSE

Transport yourself into the colorful past of Cashiers Valley and a simpler way of life at the Zachary Tolbert House. Established in 1852, this rare example of Greek Revival architecture remains virtually unaltered today, serving as a museum and host to a variety of community events on its lush grounds. Travel south on NC Hwy 107 for 2.0 miles to the visitor complex on the right.



RED FOX



RAINBOW TROUT



BROOK TROUT



BROWN TROUT

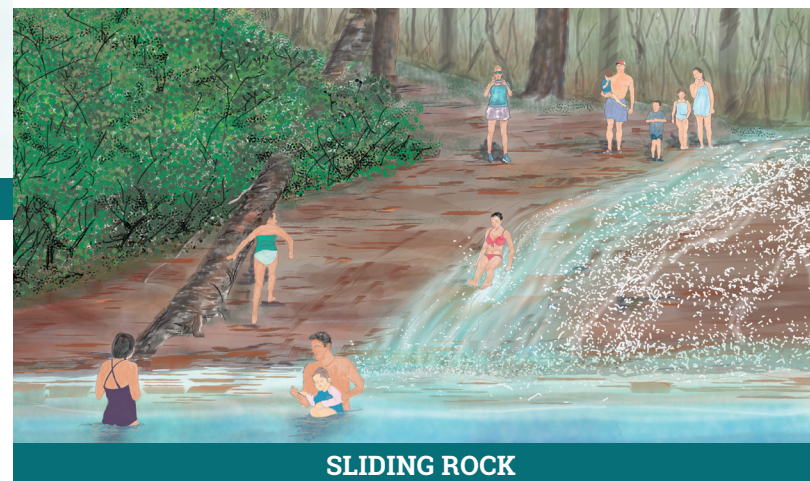


MOUNTAIN LAUREL



VILLAGE GREEN

Cashiers “Central Park” offers more than 13 acres of community gathering, outdoor, and special event venues as well as a playground, art sculptures, and gardens. Located on the southwest corner of the Cashiers Crossroads, the Village Green has parking at the Gazebo entrance on US Hwy 64 West and at the Commons entrance on Frank Allen Road.



SLIDING ROCK

This natural rock slide into a mountain swimming hole is popular among kids of all ages! Travel south on NC Hwy 107 for 1.8 miles. Turn right on Whiteside Cove Road. Continue for 2.8 miles. After crossing the bridge, pull off onto dirt on right. Follow trail to right for 100 yards to Cashiers Sliding Rock. Swimming holes are above and below the waterfall. Children should not swim without supervision.



GRIMSHAWES POST OFFICE

Operated from 1878 to 1953, this was once the smallest working post office in the USA and offers great views of Whiteside Mountain. Travel south on NC Hwy 107 approximately 1.8 miles. Turn right onto Whiteside Cove Road, and travel 3.9 miles to find the quaint and rustic post office building on your right.

Cashiers

NORTH CAROLINA

Attractions, Adventures, and Waterfalls



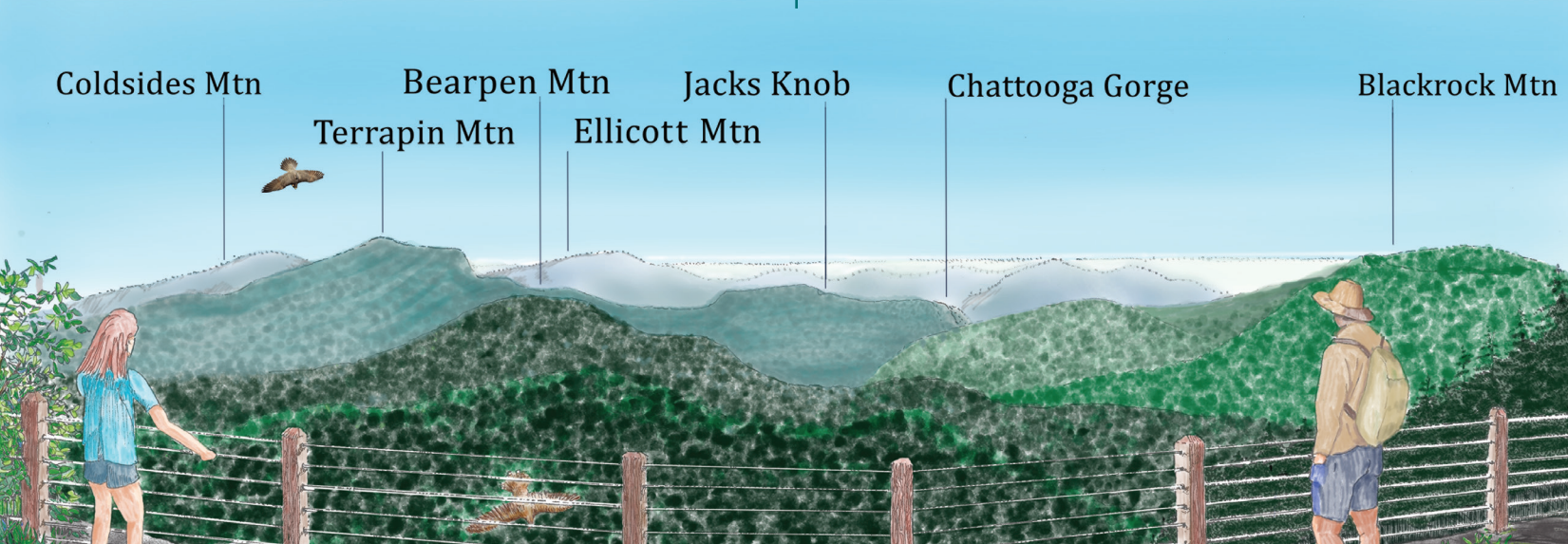
VIEW OF WHITESIDE MOUNTAIN, ELEV. 4930



Plan your trip, find accommodations, and discover even more ways to Play On in Cashiers at [DiscoverJacksonNC.com](https://www.discoverjacksonnc.com)

Share your adventure with us using [#DiscoverJacksonNC](https://www.discoverjacksonnc.com)

Map courtesy of the Jackson County TDA. Illustrated by Ken Czarnomski.



WHITESIDE MOUNTAIN

This popular 4,930-foot summit and prominent landmark along the Eastern Continental Divide presents the highest cliffs east of the Mississippi River at 750 feet. Peregrine falcons soar and roost on the rocky outcrops. Travel US Hwy 64 West 4.6 miles to Rhodes Big View Overlook. Then take an immediate left onto Whiteside Mountain Road. Follow signs to the US Forest Service parking area, facilities, and trailhead for 1 mile to the 2-mile circuit hike. Bring a few dollars for parking.



DRY FALLS

This 75-foot drop offers the unique experience of walking behind a waterfall, making it a spectacular sight in any season. Follow US Hwy 64 West for 10 miles through neighboring Highlands, NC. Turn right at light to stay on US Hwy 64 West toward Franklin for 3.6 miles to the well-marked parking lot, facilities, and paved trail on left.



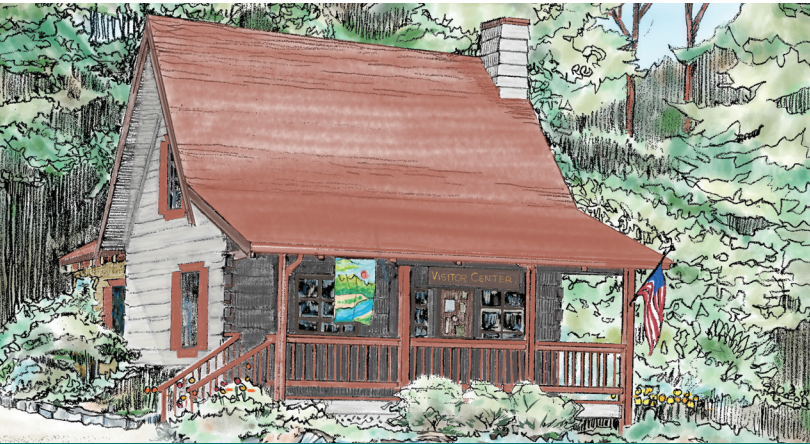
SHADOW OF THE BEAR

This naturally occurring phenomenon appears for just 30 minutes on sunny afternoons from mid-October through early November. Visit around 5:30 p.m. to see the setting sun cast a shadow of Whiteside Mountain into the valley below, creating the unmistakable silhouette of a bear. Take US Hwy 64 West 4.6 miles to Rhodes Big View Overlook on the left. Remain cautious of traffic.



BRIDAL VEIL FALLS

This 120-foot waterfall features a dramatic 60-foot cascade framed by massive boulders. Follow US Hwy 64 West for 10 miles through neighboring Highlands, NC. Turn right at light to stay on US Hwy 64 West toward Franklin for 2.8 miles to the pull-off area on the right for this popular roadside attraction. Bonus trip: Continue on US Hwy 64 West for 0.8 mile to see Dry Falls.



VISITOR CENTER AND CHAMBER

Here is your go-to source for information about Cashiers, Glenville, Sapphire, and surrounding communities. The Visitor Center and Chamber is located at 202 US Hwy 64 West, less than a quarter mile from the Crossroads. Brochure display and pickup available 24/7.



RED BELLY SALAMANDER



WHITE SQUIRREL



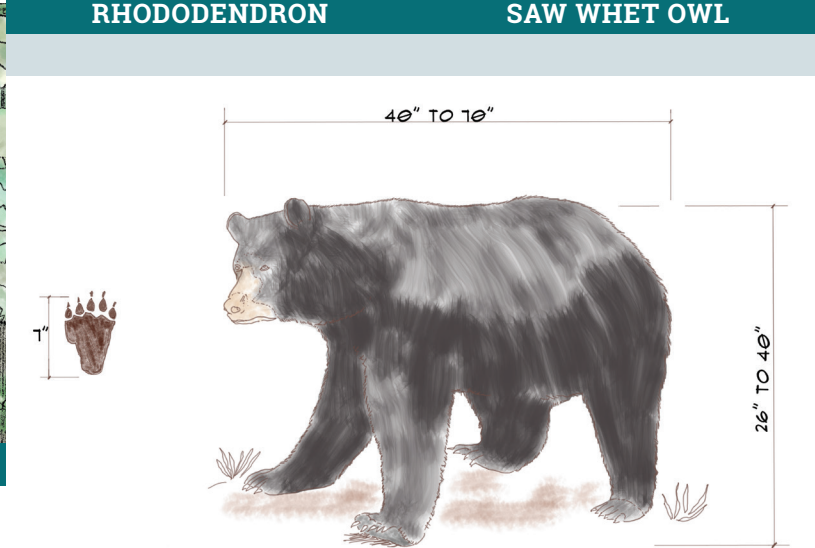
TRILLIUM



RHODODENDRON



SAW WHET OWL



BLACK BEAR



SCHOOLHOUSE FALLS

The most well-known waterfall of Panthertown Valley, 18-foot Schoolhouse Falls is best visited on a sunny summer day. Take US 64 East for 13 miles, then take NC 281 0.9 miles north. Go past the Lake Toxaway fire station (on right). Turn left on Cold Mountain Road and continue 5.7 miles. When the road ends, bear left on a gravel road. (There is a Forest Service sign here that indicates Panthertown Access). Turn right on the first gravel road to reach the trailhead parking area. Panthertown contains over a dozen waterfalls, and a hiking map is highly recommended before your visit, available at select outfitters and at panthertownmap.com. Learn more at panthertown.org.



RAINBOW FALLS

One of the most beautiful cascades in the Blue Ridge Mountains, Rainbow Falls is accessible via a 3-mile hike at Gorges State Park and one of several waterfalls along the Horsepasture River. It features 150 feet of near-vertical drop. Travel US Hwy 64 East toward Sapphire for 10.1 miles, turn right (south) onto NC 281, and travel 0.9 miles to Gorges State Park entrance and facilities. Travel 1 mile on Grassy Ridge Rd. and take a left at the stop sign to reach the trailhead.



WHITewater FALLS

One of the highest waterfalls east of the Rockies, Whitewater Falls drops 411 feet. Drive east on US 64 for 11 miles to Sapphire. Turn right onto NC 281, and go south about 8.5 miles to Whitewater Falls entrance on left. Bring a few dollars for the parking fee. Bonus trip: Visit Gorges on the way to Whitewater!

WATERFALL SAFETY!

Heed posted warning signs indicating danger and stay on established trails. Never climb on or around waterfalls and never play in the water above a waterfall. Rocks can be slippery and it's easy to lose your balance especially with bare feet. Waterfalls are great spots to take photos, not chances.