



Specific Purpose Excise Tax SPET



What is the SPET Tax:

- Town and County officials approved 10 SPET initiatives to be placed on the Nov. 2019 ballot
- Items total \$77 million
- SPET is a dedicated penny of sales tax used to fund projects
- If any of the 10 initiatives pass by a majority vote, sales tax will remain at 6%
- If all proposals fail, sales tax would go to 5% once the 2017 SPET initiatives receive full funding



How/When can I vote?

- **Absentee Ballot**
 - Now thru November 4, 2019
 - Must be received by the County Clerk's office by November 5, 2019
- **Election Day: November 5, 2019**
 - Voting Centers open 7:00 AM – 7:00 PM
 - Teton County Library
 - Old Wilson School House

How long would it take to pay for the proposed projects?

*Approximately \$14-\$15 million raised by SPET each year. **If the tax revenue collection rates remain constant,** collection will take approximately 5 to 6 years to acquire the funds to pay for the projects on the November ballot if all are approved.*



How does the voting process for SPET work?

Will voting for or against one item help or hurt another item on the ballot?





Proposition # 1

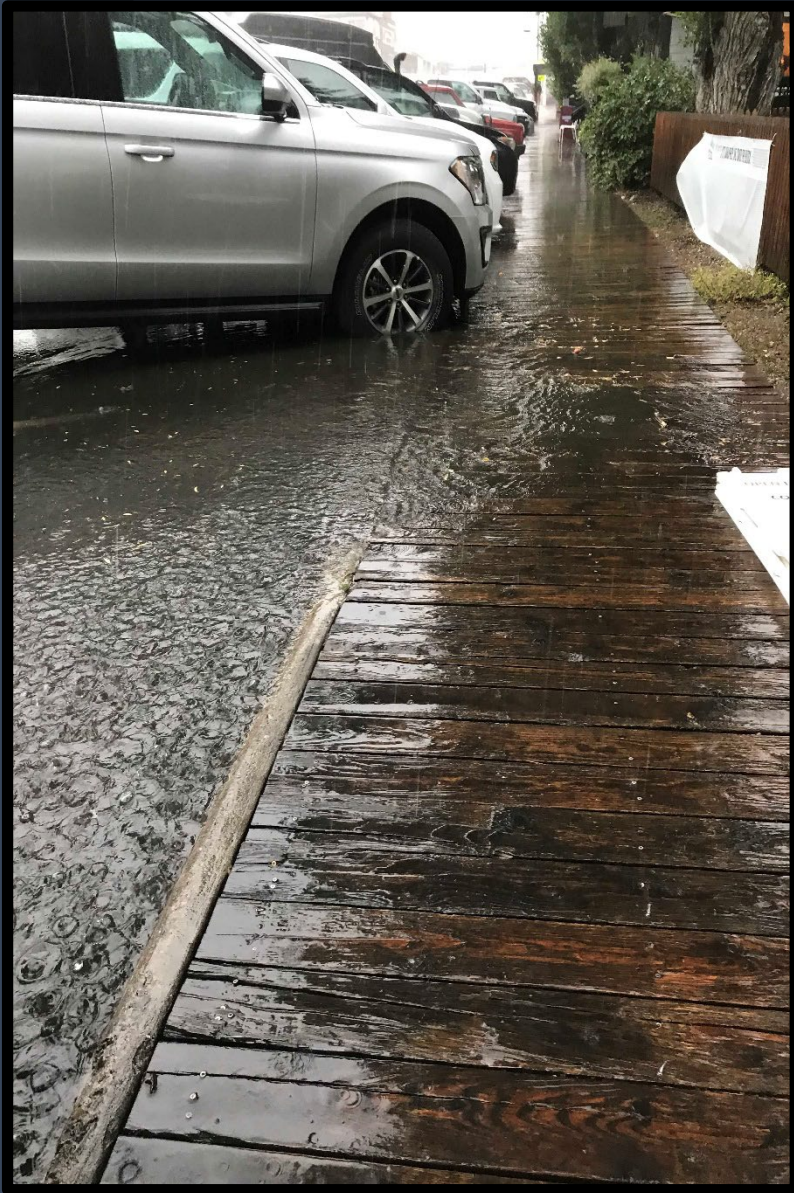
*Town of Jackson Downtown Water
Quality Improvement Infrastructure
Cache Creek Project*

\$2,000,000

Cache Creek Tube Project

What is it?

Why do we need it?



Proposition #1

Cache Creek Tube Project

Removing & Replacing 3,350 LF of very eclectic, old and obsolete collection and conveyance system of Cache Creek & stormwater drainage entering Cache Creek.

- **Current System of Conveyance**

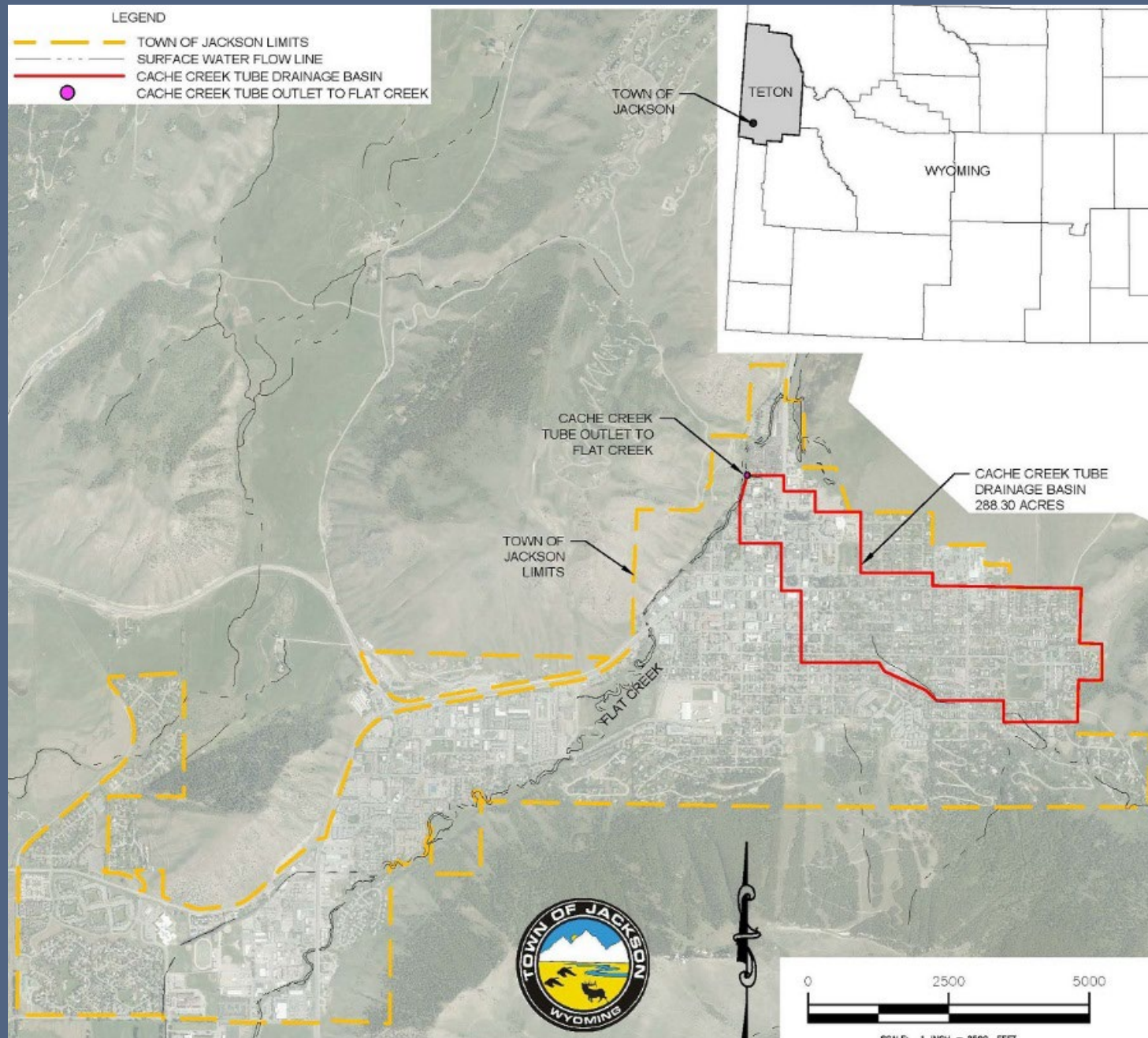
- Different sizes & types of culverts
- System of aging pipelines

- **Challenges to Repair Pipe & Clean Water**

- Many sections inaccessible – running under buildings and through private land
- Sections of pipeline are very old
- Very few options to clean/repair existing system

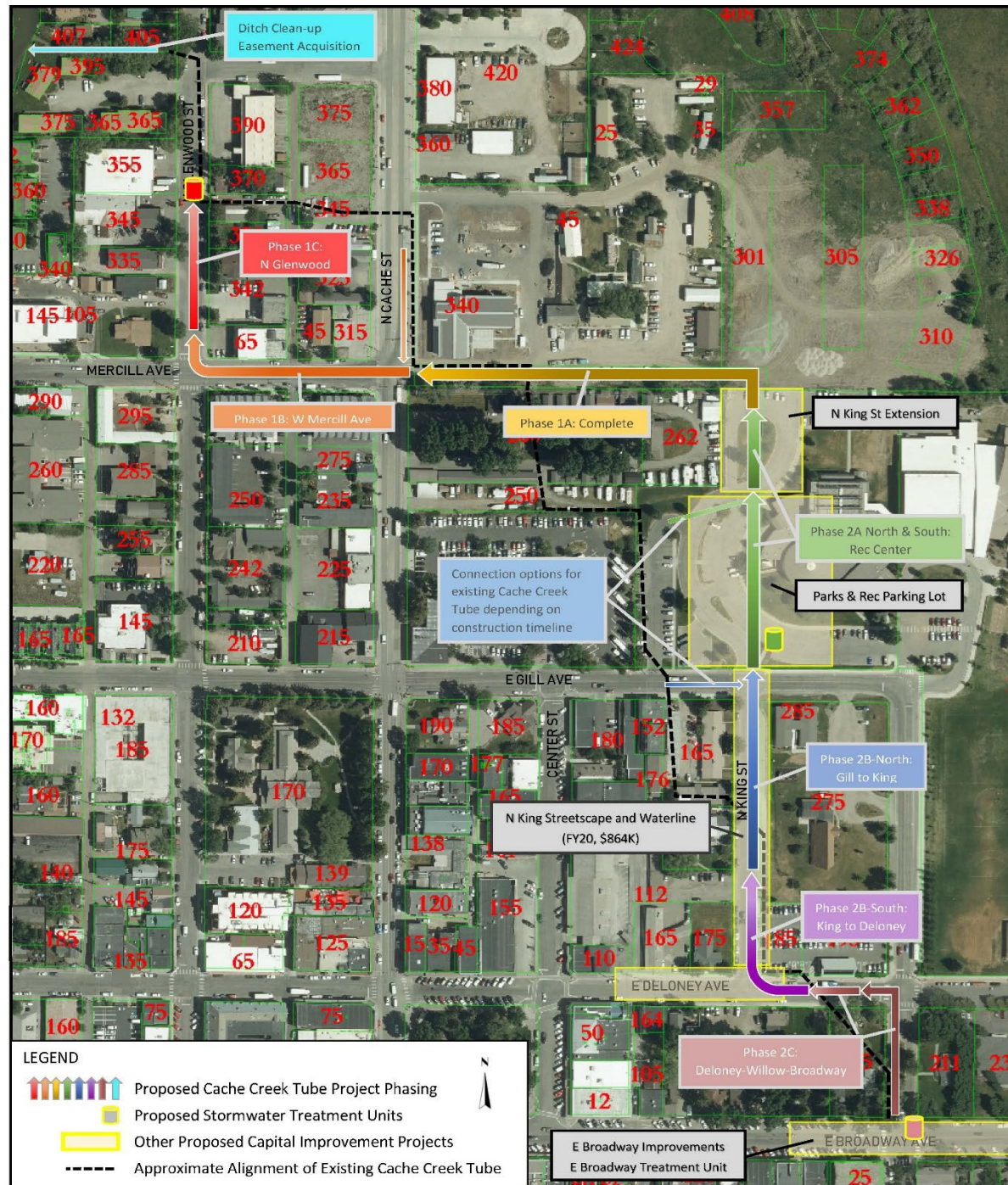
- **Difficulties Implementing Best Management Practices**

- Many points where untreated stormwater drainage enters Cache Creek – ultimately ending in Flat Creek.



Proposition #1

FIGURE 1. PROPOSED CACHE CREEK TUBE PROJECT PHASES AND PROPOSED PROJECTS IN THE VICINITY



Purpose of Cache Creek Tube Project

- Replace aging & eclectic array of piping materials.
- Move Cache Creek Tube into the public right-of-way (ROW) for ease of access and maintenance.
- Add treatment points along the tube to treat water as stormwater enters Cache Creek before it enters Flat Creek.
 - Pollutants in stormwater may include antifreeze, grease, oil and heavy metals from cars; fertilizers, pesticides and other chemicals from gardens, homes and businesses; bacteria from pet waste; and sediment from roadways.
 - The Wyoming Department of Quality (DEQ) assessed Flat Creek as “threatened” due to non-point source pollution.
 - By treating the Cache Creek Tube, we would be treating the stormwater before it enters this impaired section of Flat Creek.

Clean water investments we make today are ones our community will live with for decades and possibly centuries to come.

Proposition #1



Proposition #2

*Core Services Vehicle Maintenance
Facility*

\$18,500,000

Core Services Vehicle Maintenance Facility

What is it?
Why do we need it?



Construct a core services fleet maintenance shop to adequately service Town, County, and Community vehicles

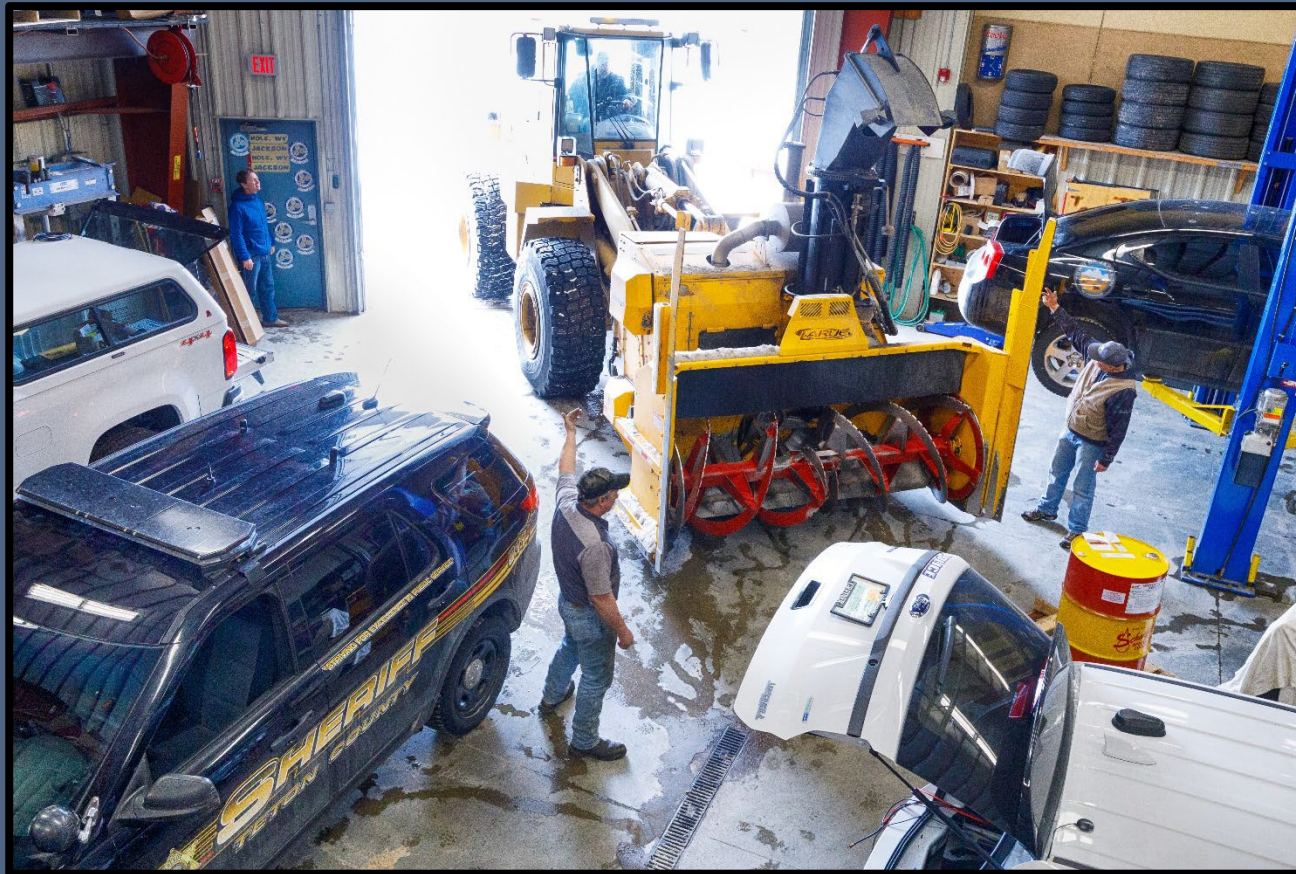
Current Maintenance Facility:

- 3 - large vehicle service bays
- 4 - light duty vehicle service bays



New Maintenance Facility:

- 9 - large vehicle service bays
- 5 - double spaced light duty service bays



All Town of Jackson vehicles:

Snow plows	Police	Administration
Engineering	Water & Sewer	Building
Planning	Animal Shelter*	START Bus

Teton County vehicles:

Fair Board	Sheriff	Administration
Search & Rescue	Road & Levee	Coroner
Weed & Pest	Public Health	ISWR
Emergency Management		Fire/EMS*

Other Community vehicles:

Senior Center	Learning Center	St. John's Hospital
---------------	-----------------	---------------------

*Fire/EMS as needed

Proposition #2

Why?

Changes since the current maintenance facility was built - almost 30 years ago - in 1990:

- Population Growth = Increase in Demand for Services

1990 Town of Jackson: 5,170 people

2019 Town of Jackson: 10,429 people (estimated)

1990 Teton County: 11,267 people

2019 Teton County: 23,261 people (estimated)

- Number of Public Works vehicles and implements maintained:

1990: 218

2019: 358

- Number of buses in START fleet:

2001: 18

2019: 33

- Number of Public Works employees & mechanics

1990: 22 PW employees **2019:** 31 PW employees

1990: 2 mechanics **2019:** 5 mechanics (+ 1 manager)

- Public Works Fleet operational budget

1990: \$104,072

2019: \$2,344,498



This project would be planning for not only today, but future needs of the community.



Proposition #3

Teton County Courthouse

\$2,000,000



Teton County Courthouse, 1968

Sponsored by Teton County

Proposition #3

Teton County has assessed the Courthouse Building in the following areas:

Seismic Stability

Energy Efficiency

Space Analysis

Accessibility

Facility Condition

Security



Teton County Courthouse Ballot Language

For the purpose of planning, designing, engineering, site preparation and preliminary construction costs for a new or renovated Teton County Courthouse. Funds may also be used for security improvements to the existing Teton County Courthouse.





Proposition #4
"Road to Zero Waste"

*Infrastructure Improvements at the Teton County
Recycling Center and the Teton County
Composting Facility*

\$2,500,000



Road to Zero Waste

Sponsored by Teton County

Proposition #4

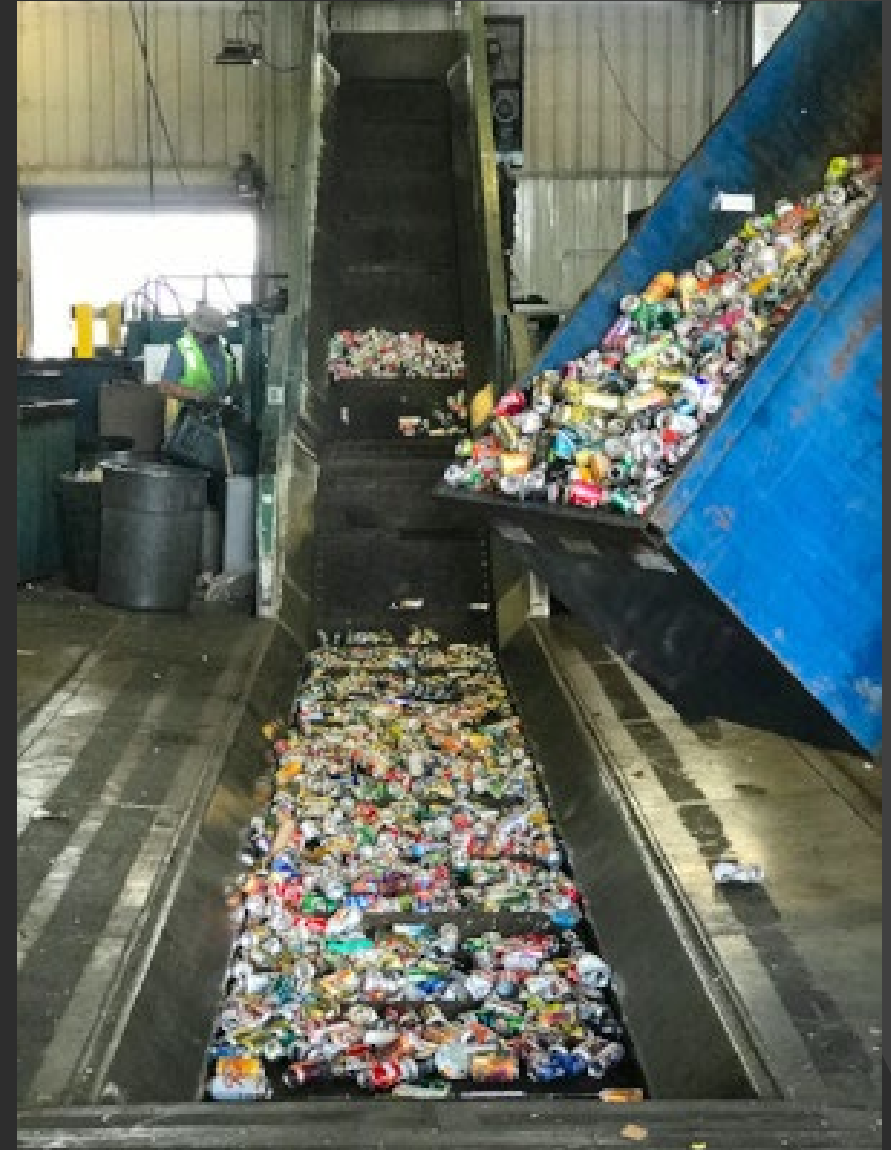
Infrastructure Improvements

Outdoor, Covered, Screened Recycle Center Residential Recycling Area:

This will allow bins that are currently inside to be moved outside, opening space on the floor for a sort system. A covered, screened area also helps eliminate waste blowing around the recycling center and allows greater access for the public to recycling bins.

Sort System for Recycle Center:

A sort system for the Recycle Center will allow ISWR to accept and sort partially mixed materials. It will reduce the number of “sorts” required by the public, increasing convenience. Increasing convenience will increase participation in the recycling program. By minimizing the need for increased manual labor as volumes increase over time, both time and money are saved, as well as reducing workplace hazards. Additionally, a sort system will decrease rejection of loads due to trash contamination.



Infrastructure Improvements

Food Waste Sorting Equipment for Compost Facility:

Automated equipment will remove contamination from food waste and will allow for a more efficient sorting process, with greater safety for operators, less rejection of loads, and a cleaner, higher-quality end product for sale. Without a high-quality finished product, a food waste composting program is not viable. Sorting equipment will allow ISWR to manage material in a more sustainable way by needing less trucking and providing more composting to the community.

Truck Scale at Recycle Center:

A truck scale will be used to weigh vehicles as they enter/exit. This will allow ISWR to provide weights of materials to customers. It will increase efficiency in weighing commodities on site and accurately collecting and tracking data and revenue.





Proposition #5

*Jackson Hole Fire/EMS Wildland
Firefighting Apparatus Replacement*

\$1,600,000



Wildland Fire Apparatus Replacement

Sponsored by Teton County

Proposition #5

Current Truck



Current Truck



Example of New Truck



Example of New Truck



Current Wildland Fire Trucks vs. Examples of New Trucks

Wildland Firefighting Apparatus Replacement

Wildland fire is a growing threat to our county and our community. Jackson Hole Fire/EMS is responsible for defending all private lands within Teton County from the effects of wildfire.

The increase in wildland fires locally and regionally has created an increased demand for wildland fire apparatus.

The current wildland truck fleet is primarily made up of retired military chassis vehicles. The newest of those vehicles is from 1983.

These vehicles are being forced into retirement due to a lack of parts available to maintain them and growing concerns of their safety when operating in steep terrain.

This SPET measure would replace **four** of the current trucks with new vehicles to improve: efficiency; reliability of wildland firefighting operations; and improvements in safety of operations.



Proposition #6

*Gregory Lane – Street, Stormwater
and Sewer Infrastructure, and Safe
Routes to School*

\$8,500,000

Gregory Lane

Street, Stormwater & Sewer Infrastructure

Safe Routes to School



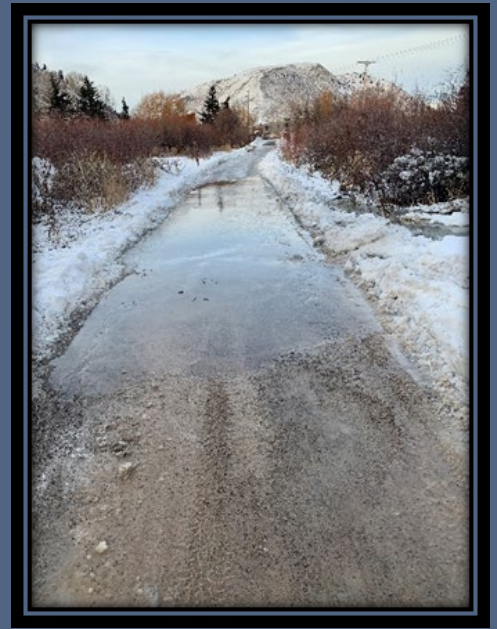
What is it?

Proposition #6

Why do we need it?

Design and construct needed infrastructure improvements on Gregory Lane to address:

- Sidewalks related to Safe Routes to Schools
- Major stormwater issues
- Complete streets



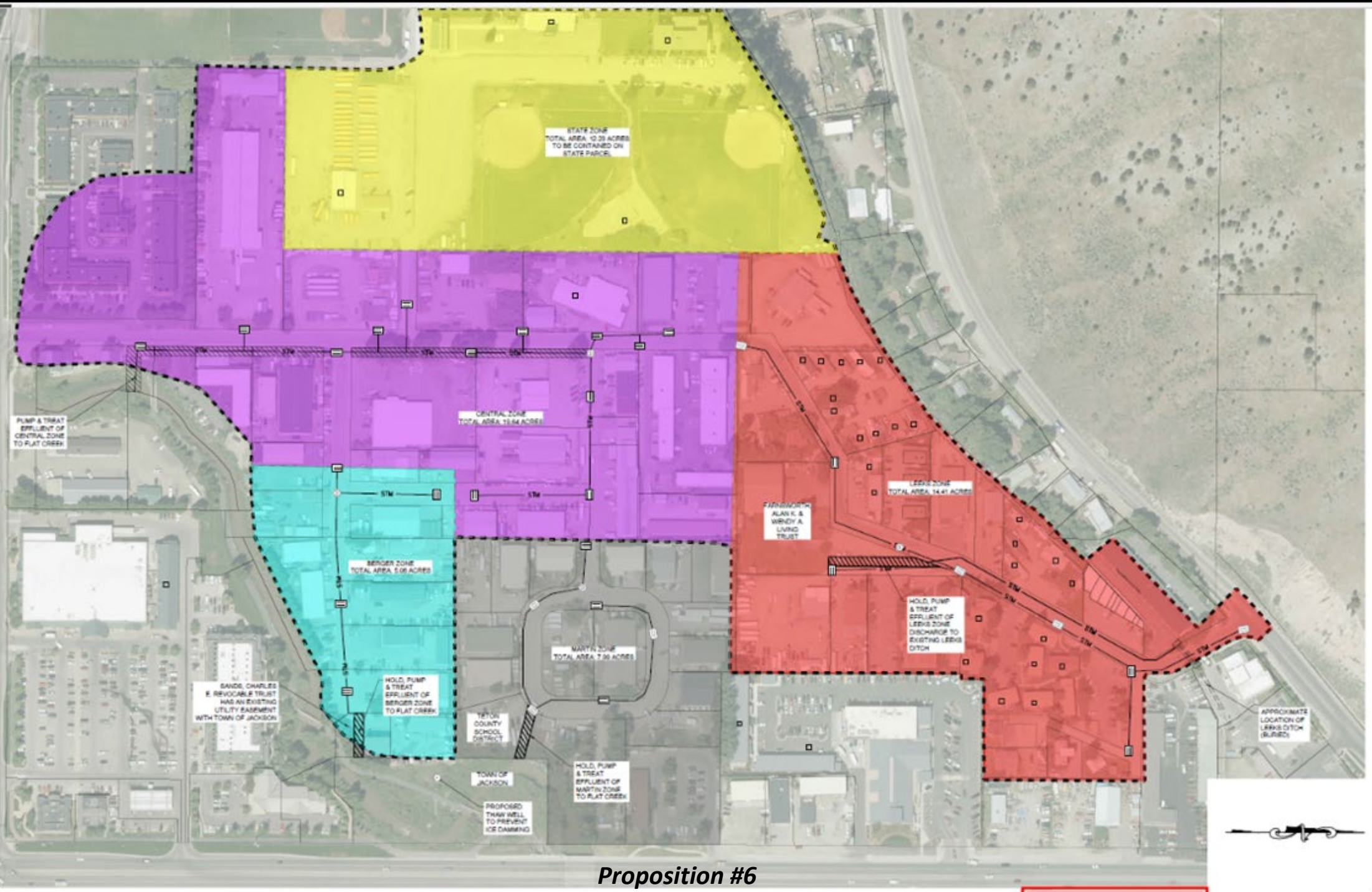
Proposition #6

The project calls for:

- Major storm drainage improvements
- Sewer improvements including lowering the sewer
- Rebuilding the existing street including:
 - asphalt pavement
 - curb & gutter
 - sidewalks
 - driveway approaches
- Streetscape improvements including pavers, irrigation, trees, shrubs, signage and streetlights

G
R
E
G
O
R
Y

L
A
N
E



Proposition #6

Gregory Lane - Why?

- Provides for the Safe Routes to School Program, which enables and encourages children, including those with disabilities, to walk and bicycle to school. According to the school district, there are roughly 100 children living on Gregory Lane.
- Provides improved pedestrian/bike amenities to connect the existing and future resident populations within the surrounding complete neighborhood amenities will be a focus of improved livability and safety.
- Provides a safe route for START Bus riders who get on and off the bus at the Maverick Gas Station bus stop.
- Provides a thaw well which would be used in the winter to help prevent frazzle ice formation in Flat Creek, helping to keep the pathway open for pedestrian and Safe Route to School use all winter.
- Provides stormwater protection for 60 acres of surface drainage for Flat Creek.
- Maintaining and promoting light industry use which supports our local economy while accommodating a significant amount of residential use is key.



Proposition #6



Proposition #7

Community Housing Opportunities

\$5,500,000

SPET Proposition #7: Housing Opportunities \$5,500,000



**The Gutwein
Family
Homeowners since
2018
Mental Health
Therapist,
Conductor and
Teacher**

Community First, Resort Second

Median Income for Teton County

- 1 person = \$71,540
- 2 people = \$81,760
- 3 people = \$91,980
- 4 people = \$102,200

Julia Heemstra
Homeowner
since 2011
St. John's
Medical Center

Median SFH = > \$1.08M

\$300,000

Median condo/TH = \$580K

\$175,000

1-Bed: \$1800 to \$2000/month

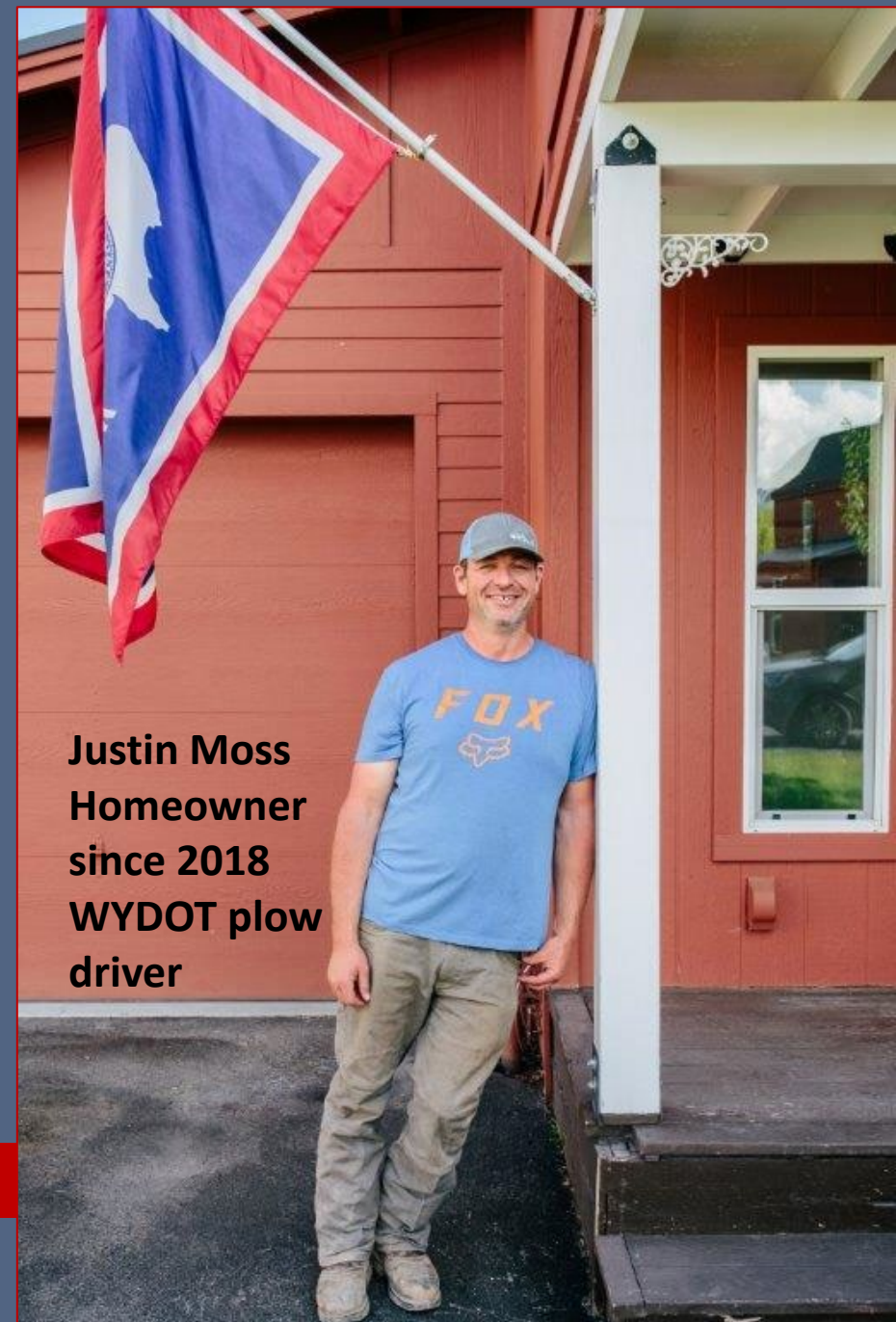
\$72,000

2-Bed: \$2,000 to \$2,500/month

\$89,000

Over 1,000 households looking
for housing through Housing
Department

81 81 homeless students (2.7% of all students)
490 490 students on free or reduced lunches
(17% of all students)
8,000 8,000 commuters daily from Idaho
55 55 more vehicle miles/day
= MORE wildlife/vehicle collisions, MORE
emissions, same effective population
25% 25% of workforce will retire in next 5-8 years
800 Over 800 deed restricted homes
70 HD is partnering on 70 new homes right now



Justin Moss
Homeowner
since 2018
WYDOT plow
driver

Prop # 7: Housing Opportunities

\$5,500,000



Proposition #8
*History Museum Building –
Genevieve Block*

\$4,400,000



Proposition #9

*Teton County/Jackson Recreation Center
Expansion and Renovation, Community
Climbing Gym, King Street Extension and
stormwater Treatment*

\$22,000,000



Teton County/Jackson Community Recreation Center

Sponsored by Teton County

Proposition #9



WHAT?



Teton County/Jackson Recreation Center Expansion and Renovation, Community Climbing Gym, King Street Extension, and Storm-water Treatment.

- **Proposed Recreation Center Amenities:**

- Additional 65'x105' indoor Gymnasium
- 200 Yard Indoor Walking/Running Track
- 5,750 SF Indoor Climbing Gym
- 8,600 SF Outdoor Zero Depth Aquatic Splash Pad
- 3,800 SF Indoor Health & Fitness Multi-purpose Studios
- 3,850 SF Indoor Health & Fitness Exercise Equipment Studios
- 2 Community Health Collaborative Consultation Rooms
- 1,000 SF Drop-in-Daycare w/Outside Playground
- 900 SF Community and Student Lounge
- 750 SF Birthday Party/Event Room
- 1,000 SF Outdoor Climbing Boulders

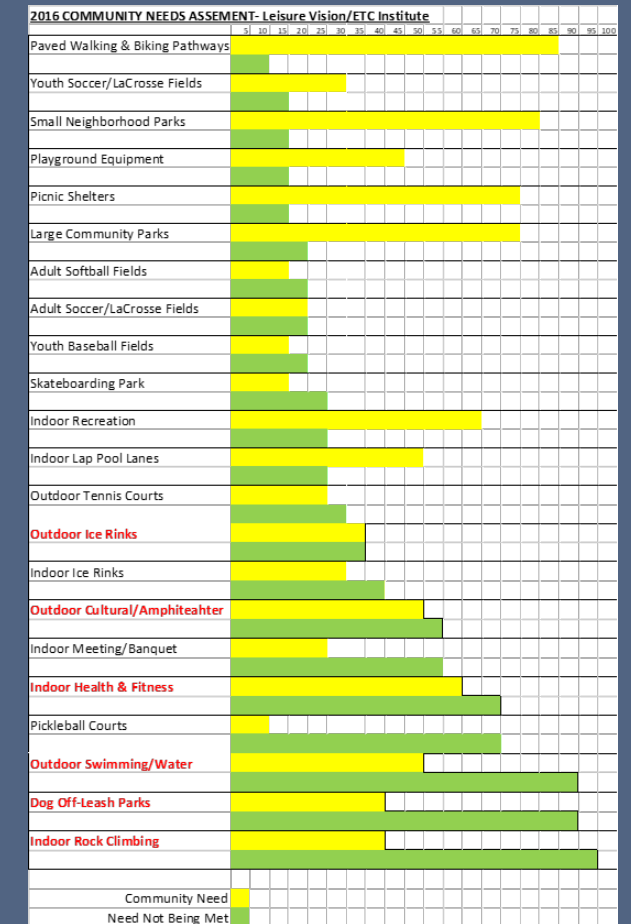
- **Proposed Associated Community Infrastructure**

- King Street Extension for Emergency Access
- Multi-modal Pathway Connection
- Cache Creek Stormwater Extension
- Downtown Stormwater Collection and Treatment System
- Enclosed Community Recycling Collection Facility
- Seasonal P&R Staff Vehicle Camping



[illegible]

In 2006, 2012, 2016 P&R conducted a series of statistically valid community needs assessment through Leisure Vision Institute. The survey results consistently indicated a high need, and a high needs not being met for Indoor health and fitness, indoor climbing, and outdoor aquatic features. In 2010 voters approved a P&R SPET measure to design and plan future expansion to meet these needs. In 2017 voters approved a P&R SPET to upgrade existing amenities in the recreation center. The current SPET is a continuation of this process and our commitment to meeting the needs of the community.



Proposition #9

“...local park and recreation users report fewer visits to a physician for purposes other than checkups than did non park and recreation users...” (Ho et al., 2003, April)

*Recreation and park facilities enhance education and help improve grades. As children participate in recreation and leisure activities their learning skills are developed and improved, directly impacting their school performance (DCOE, 2001).



Physical activity was related to significant reductions in depression in five separate studies during the 1990s that concentrated on the re-analysis data from groups of earlier individual studies. The reductions occurred for subjects who were classified as non-depressed, clinically depressed, or mentally ill (Landers, 1997).

Physical Activity Diminishes Risk of Chronic Disease:

Recreational activities also significantly reduce the risk of many serious diseases. *The Physical Activity and Health: A Report of the Surgeon General* state that millions of Americans suffer from diseases that can be prevented or the symptoms improved through increased physical activity:

- 12.5 Million people have cardiovascular disease,
- 1.5 Million people suffer from a heart attack in a given year,
- 50 million people have high blood pressure,
- 8 million people have adult-onset Type II diabetes,
- 95,000 people are newly diagnosed with colon cancer each year, and
- 250,000 people suffer from an osteoporosis related hip fracture each year (HHS, 1996).



WHY IS THE RECREATION CENTER A COMMUNITY NEED?

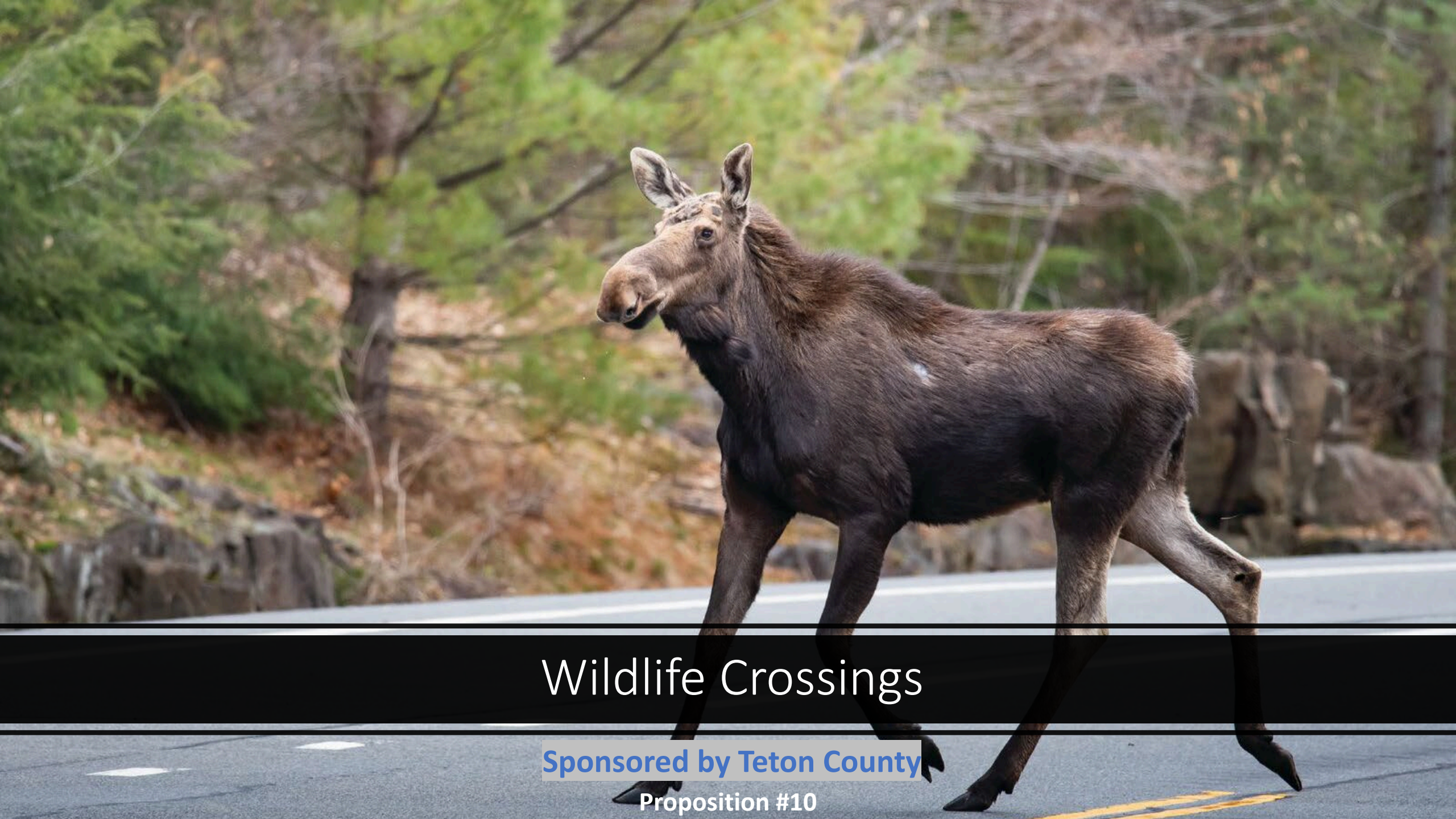
Proposition #9



Proposition #10

Wildlife Crossings

\$10,000,000



Wildlife Crossings

Sponsored by Teton County

Proposition #10

Wildlife Crossings

The Yellowstone/Teton area is known for its diverse and abundant wildlife population and is one of the only remaining regions in the U.S. with a complete set of large predator/prey populations.

Preservation of wildlife is critical to maintaining the tourism-based economy of Teton County, to preserving the local ecological environment and protecting what is both a local and national treasure.

The Jackson/Teton County Comprehensive Land Use Plan seeks to include wildlife crossings and other mitigation standards in road design, limit human/wildlife conflicts, and reduce transportation impacts to wildlife and natural and scenic resources.

Wildlife Crossings

The Jackson/Teton Integrated Transportation Plan that was adopted in September 2015. It directed that Teton County develop a wildlife crossing plan to enhance wildlife permeability and reduce wildlife-vehicle collisions and shall:

“Utilize existing science-based research when designing wildlife crossings and planning for wildlife permeability along each corridor.”

The 2018 Teton County Wildlife Crossings Master Plan set priorities based on human safety; economics; and biological conservation parameters. It provides tools to identify high priority locations for the potential implementation of mitigation measures and aims to reduce wildlife-vehicle collisions by providing safe crossing opportunities.



Thank You