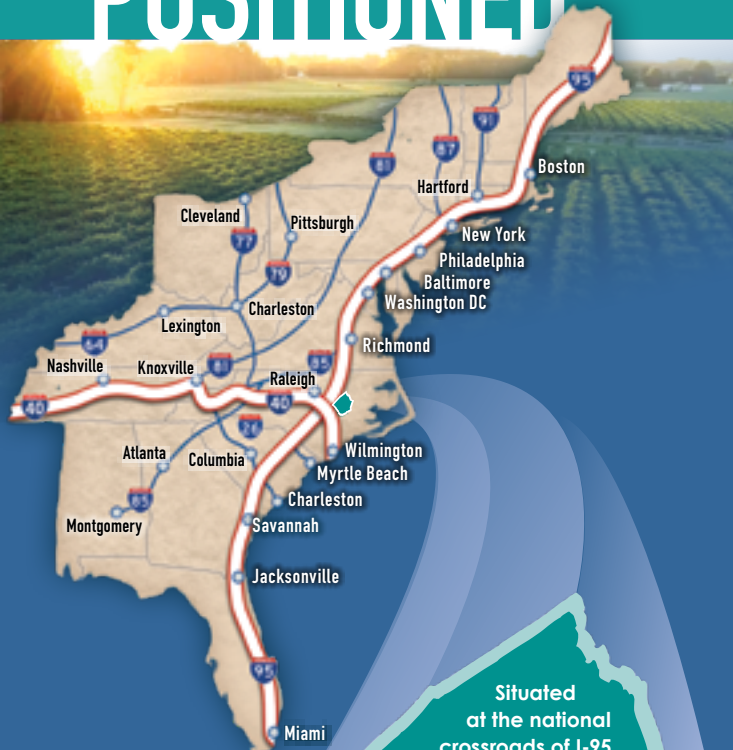


pleasantly  
**POSITIONED**

SMITHFIELD | SELMA | CLAYTON | I-40, EXIT 312 | BENSON | FOUR OAKS | KENLY

# VISITORS GUIDE



Situated at the national crossroads of I-95 and I-40, halfway between our North and South Welcome Centers, Johnston County offers convenient access to a multitude of attractions, provisions, and accommodations for both the road weary and adventurous spirit.

**Johnston County**  
SMITHFIELD, NC

1-800-441-stay  
johnstoncountync.org  
#VisitJoCo

JCVB 02-24 15M

# Shop

## ALONG THE WAY.



**Johnston County**  
SMITHFIELD, NC

1-800-441-stay  
johnstoncountync.org

#VisitJoCo

OUTDOOR **NC**

# WELCOME

So many delightful discoveries and experiences await you in JoCo.

**T**hroughout this inspirational travel guide, you will find things to do, places to shop and dine, and available accommodations. Not all listings in the county are found here, but links off to our website for listings, suggested itineraries, day trips and hotel packages are referenced. We encourage you to click through to find the curated materials we have developed to help in your travel planning and for booking a trip to Johnston County!



## Johnston County Visitor Center

234 Venture Drive  
Smithfield, NC 27577  
919-989-8687, 1-800-441-7829  
info@johnstoncountync.org

Resources are available at the visitor center located in Smithfield for the communities of Johnston County:

- Maps & Trail Guides
- Brochures & Relocation Info
- Coupons & Event Information
- Gift Shop and Local Products

Hours: Mon-Fri: 8:00am - 5:00pm

**Johnston  
County**  
SMITHFIELD, NC

1-800-441-stay  
#VisitJoCo  
johnstoncountync.org

## Things to Do

02

From the great outdoors, on-farm fun or a day-trip filled with history and museums, visitors will find interesting stories, local personalities and wide open spaces just off interstates 95 & 40. We invite you to Get Outside the City for a trip to JoCo!

## Places to Shop

10

For national premium brands at 25-65% off retail every day, your top destination in NC is no doubt, Carolina Premium Outlets. Venture out to our downtown area for boutiques, antiques, and enjoy local shops.

## Dining Out

16

We can talk for days about BBQ -- eastern style with vinegar sauce or competition style pulled pork, ribs, or brisket. We know you will find a favorite in JoCo. We also invite you to discover new chef-driven restaurants in JoCo, sweet shops, brunch spots, and more!

## Events & Festivals

23

## Places to Stay

26

Stay in touch via our social media channels, website, and calendar for the latest news and happenings! Or call upon our staff at the Johnston County Visitors Bureau for additional information, help with group itineraries, or planning a destination wedding or special event.



facebook.com/JoCoVisitorsBureau | twitter.com/JoCoTourism  
youtube.com/user/VisitJohnstonCounty/videos | pinterest.com/smithfieldnc  
johnstoncountync.org/blog | instagram.com/visitjoco

# Explore and Play



**V**isit for the day, the weekend, or make us part of your road trip pit-stop! Whether it's outdoor soft adventure you seek, food trails to follow, or learning something at your leisure, you will find it here. There's something to experience for the whole family. Explore parks & greenways (many that are dog-friendly), enjoy a local meal made with farm fresh ingredients, and get more for your money when you stay overnight using one of our hotel package deals!

“OUR CHARMING COMMUNITIES, MUSEUMS, LOCAL FARMS, AND PARKS WILL DELIGHT YOU AND OFFER MANY REASONS TO VISIT TIME AND TIME AGAIN.”

[johnstoncountync.org/things-to-do](http://johnstoncountync.org/things-to-do)





## FAMILY FUN

### Bungalow Bounce

101 Best Wood Dr., Clayton  
919-359-1133  
bungalowbounce.com

### Conundrum Escapes

41-A Technology Dr., Garner  
919-341-9352  
conundrumescapes.com

### Epic Axe

213 W. Main St., Clayton  
984-220-0776  
epic-axe.com/clayton-axe-throwing

### Excel Sports Complex

Carolina Premium Outlets  
1025 Outlet Center Dr., Ste. 520, Smithfield  
919-300-1408

### Harmony Playground

1774 Glen Laurel Rd., Clayton  
919-553-1550  
townofclaytonnc.org/248/harmony-playground

### Howell Theatre

141 S. Third St., Smithfield  
919-938-1201  
howellmovies.com

### Partnership for Children Park

600 M. Durwood Stephenson Pkwy,  
Smithfield  
919-934-2148  
smithfield-nc.com/page/parks\_home

### Pottery Camp

12973 US Hwy 70 Bus W., Clayton  
919-550-3861  
potterycamp.com

### Rainbow Lanes Family Fun Center

850 NC Hwy 42 W., Clayton  
919-553-4386  
rainbowlanesclayton.com

### Ready-Set-Escape

1304-D W. Market St., Smithfield  
919-912-9080  
ready-set-escape.com

### Smithfield Cinemas

175 S. Equity Dr., Smithfield  
919-934-5300  
smithfieldcinemas.net

### Strike Eagle Cornhole & Axe Throwing

505-A S. Bright Leaf Blvd., Smithfield  
919-440-0216



## ON-FARM FUN

### Ashlan Meadows Family Farm

Visit all year round for fresh produce, hayrides, pumpkins, trail rides and special events.  
1912 Pine Level Micro Rd., Selma  
919-625-0946  
ashlanmeadows.com

### Boyette Family Farms

Enjoy agritourism activities for family fun at the Clayton Fear Farm, and Lights on the Neuse holiday event.  
1620 Loop Rd., Clayton  
919-553-0016  
boyettefamilyfarms.com

### Creekside Farm, LLC

Growing top-quality blueberries and providing fun experiences for families such as pick-your-own, farm animals, a playground, and kid-sized rope courses.  
300 Pine Tree Rd., Selma  
919-965-9969  
creeksidefarmberries.com

### Pace Family Farms

Visit for pick-your-own strawberries, year-round produce, farm fresh beef and pork.  
12701 Buffalo Rd., Clayton  
919-398-2698  
pacefamilyfarms.com



### Smith's Nursery and Strawberry Farm

Open year-round with pick-your-own seasons bringing families and visitors to Smith's for fresh produce and fruits, fishing, and special events.  
443 Sanders Rd., Benson  
919-934-1700  
smithsnurseryinc.com

### Sonlight Farms

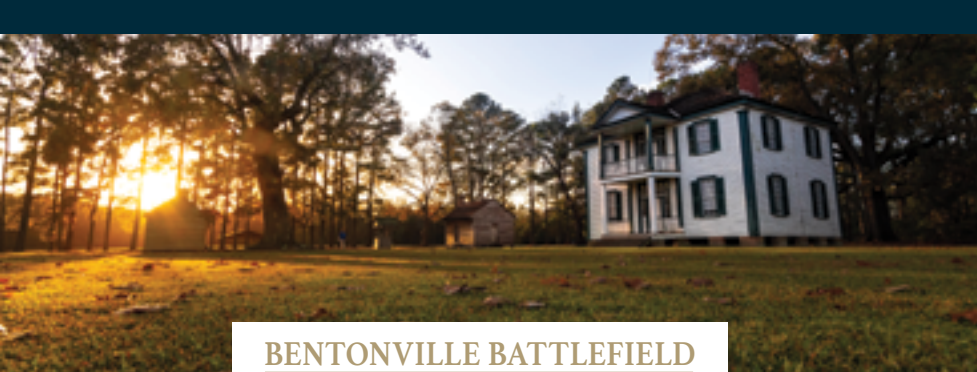
Enjoy a corn maze, hayride, giant slide, bounce house, playground, games, animal barn, special events and more. Great for school groups. Open seasonally.  
293 Bunn Rd., Kenly  
252-205-5280  
sonlightfarmsnc.com



## *Ava Gardner* M · U · S · E · U · M

The Ava Gardner Museum is a must-see destination for anyone interested in the life and times of Ava Gardner, one of the most iconic stars of the Golden Age of Hollywood. Located in Downtown Smithfield, the museum offers visitors a comprehensive look into the life of this beloved actress.

**Ava Gardner Museum**  
325 E. Market St., Smithfield | 919-934-5830  
avagardner.org



## **BENTONVILLE BATTLEFIELD** STATE HISTORIC SITE

Our Civil War history is centered on Bentonville Battlefield near Four Oaks; the largest land battle fought in North Carolina and the last major Confederate offensive of the war. In addition to this site, visitors interested in Civil War heritage should take a drive along the Carolina Campaign Driving Tour which has 18 interpretive markers featuring On-Cell radio tours and enjoy three miles of hiking trails.

**Bentonville Battlefield State Historic Site**  
5466 Harper House Rd., Four Oaks | 910-594-0789  
historicsites.nc.gov/all-sites/bentonville-battlefield

## HISTORY & HERITAGE

### **Ava Gardner Museum**

Home to an extensive collection of costumes, objects, and personal effects of screen legend Ava Gardner.  
325 E. Market St., Smithfield  
919-934-5830  
avagardner.org

### **Benson Museum of Local History**

Exhibits on a variety of subjects including farming, home life, artists, merchants, and country doctors.  
102 W. Main St., Benson  
919-894-1266  
townofbenson.com/2209/museum

### **Bentonville Battlefield State Historic Site**

The Battle of Bentonville, fought March 19-21, 1865, was the last full-scale action of the Civil War in which a Confederate army was able to mount a tactical offensive. Tour the nearby Harper House, which served as a makeshift hospital.  
5466 Harper House Rd., Four Oaks  
910-594-0789  
historicsites.nc.gov/all-sites/bentonville-battlefield

### **Johnston County Heritage Center**

An extensive collection of materials for researching genealogy and state and local history.  
241 E. Market St., Smithfield  
919-934-2836  
jcheritagecenter.org

### **Johnston County Museum**

Enjoy permanent and rotating exhibits, gift shop, and special events throughout the year.  
329 E. Market St., Smithfield  
919-938-5912  
jcheritagecenter.org

### **Selma Historic Union Station/NC AMTRAK**

Learn about the history of Selma with exhibits in this historic station.  
500 E. Railroad St., Selma  
800-BY-TRAIN  
ncbytrain.org

### **Tobacco Farm Life Museum**

6,000 sq. ft. gallery displays artifacts from all aspects of farm life, with hands-on children's exhibit and a restored farmstead.  
709 N. Church St., Kenly  
919-284-3431  
tobaccofarmlifemuseum.org

## PERFORMING ARTS

### Live@The Rudy

This Branson-style production entertains visitors and groups with musical delights from '50's rock 'n' roll to classic and contemporary country. The popular Christmas show starts early November and runs through the week of Christmas.  
300 N. Raiford St., Selma  
877-843-7839  
rudytheatre.com

### Neuse Little Theatre

The theater has been a vital part of the cultural heritage in Smithfield since 1974, performing five diverse productions a year.  
104 S. Front St., Smithfield  
919-934-1873  
neuselittletheatre.org

### Paul A. Johnston Auditorium

Newly renovated and offering regional and national performances, check the calendar for events.  
245 College Rd., Smithfield  
919-209-2099  
johnstoncc.edu

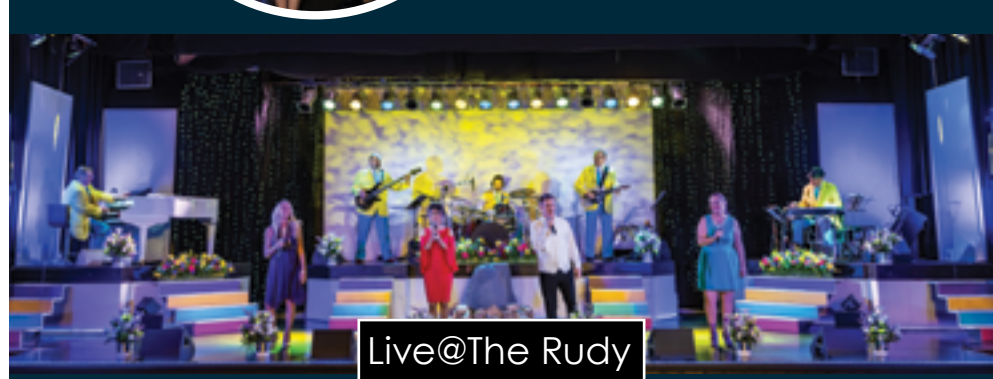


### The Clayton Center

This 600-seat performing arts center has superb acoustic quality and provides an intimate environment for nationally touring artists.  
111 E. Second St., Clayton  
919-553-1737  
theclaytoncenter.com

### Benson Little Theater

A community theater housed in the 330 seat W. J. Barefoot Auditorium, presenting 3-5 plays, musicals, and concerts each year. Tickets available on the website.  
303 E. Church St., Benson  
919-894-3825  
bensonlittletheater.com



This popular Branson-style variety show has brought entertainment to Selma for more than 25 years. The 11-member cast blends their beautiful voices with the band, adds in comedy skits, and now has four unique shows which are all family friendly. Easter Jubilee in April, Throwback Sounds of Summer in June, Classic Country Jubilee in October, and the very popular Christmas Jubilee in November/December - four shows that will have you coming back to The Rudy over and over. People come to Live@The Rudy when they want a little WOW in their lives.

Live@The Rudy  
300 N. Raiford St., Selma | 919-202-9927  
rudytheatre.com

# Recreation



For family outings visit our two managed forests in the county for more activities like hiking, biking, bird watching, horseback riding, picnics and fishing at Howell Woods and Clemmons Forest. Additional parks in the Towns of Clayton, Smithfield, Selma, Kenly, Four Oaks and Benson offer playgrounds, parks, and trails.

## BOATING & FISHING

### Howell Woods Environmental Learning Center

6601 Devils Racetrack Rd., Four Oaks  
919-938-0115

[johnstoncc.edu/howellwoods](http://johnstoncc.edu/howellwoods)

### Langdon's Fishing

664 Cornwallis Rd., Garner  
919-779-0207

### Neuse Adventures Canoe & Kayak Rentals

2975 Covered Bridge Rd., Clayton  
919-553-3295

[neuseadventures.com](http://neuseadventures.com)

### Richardson's Bridge River Access

1592 Richardson Bridge Rd., Princeton  
919-707-0010

[ncpaws.org/ncwrcmaps/boatingaccessareas](http://ncpaws.org/ncwrcmaps/boatingaccessareas)

### Smith's Nursery & Strawberry Farm

443 Sanders Rd., Benson  
919-934-1700

[smithsnurseryinc.com](http://smithsnurseryinc.com)

### Smithfield Town Commons Boat Ramp

150 S. Front St., Smithfield  
919-934-2148

[smithfield-nc.com/page/parks\\_home](http://smithfield-nc.com/page/parks_home)

## HIKING & BIKING

### Bailey & Sarah Williamson Preserve

The 447-acre preserve in Wake and Johnston Counties is one of the largest multi-use trail systems in the Triangle, with 16.6 miles of single-track trails.

4409 Mail Plantation Rd., Raleigh  
919-908-8809

[triangleland.org/explore/nature-preserves/williamson-preserve](http://triangleland.org/explore/nature-preserves/williamson-preserve)



### Buffalo Creek Greenway

This 3-mile greenway is part of the Mountains to Sea Trail with a ten-foot wide path for hikers, runners, and bikers.

600 M. Durwood Stephenson Pkwy., Smithfield

919-934-2148

[smithfield-nc.com/page/parks\\_neuse\\_riverwalk](http://smithfield-nc.com/page/parks_neuse_riverwalk)

### Clayton River Walk on the Neuse

This 4-mile trail in Clayton is part of the Mountains to Sea Trail which also connects to Sam's Branch Greenway Trail and Wake County's trails.

2686 Covered Bridge Rd., Clayton

919-553-1550

[townofclaytonnc.org/526/river-walk-on-the-neuse](http://townofclaytonnc.org/526/river-walk-on-the-neuse)

### Clemmons Educational State Forest

Enjoy trails, exhibits, and "talking trees" among a mix of pine and hardwood forests. This managed forest offers a pleasant rolling terrain perfect for hiking.

2256 Old US 70 W., Clayton

919-553-5651

[ncesf.org/clemmons.html](http://ncesf.org/clemmons.html)

### Flower Hill

A 25-acre nature preserve protects rare populations of rhododendron, galax, and other montane plants.

9038 Flower Hill Rd., Middlesex

919-833-3662

[triangleland.org/explore/nature-preserves/flower-hill-nature-preserve](http://triangleland.org/explore/nature-preserves/flower-hill-nature-preserve)

### Howell Woods Environmental Learning Center

This 2,800 acre park offers trails for horseback riding, mountain biking, bird watching, long-distance hiking, no-trace camping and fishing. Cabins on site for rent.

6601 Devils Racetrack Rd., Four Oaks  
919-938-0115

[johnstoncc.edu/howellwoods](http://johnstoncc.edu/howellwoods)

### Sam's Branch Greenway Trail

Trail head entrance to the Clayton Greenway located along the Neuse River is great for hiking and biking.

1358 O'Neil St., Clayton

919-553-1550

[townofclaytonnc.org/facilities/facility/details/sams-branch-greenway-3](http://townofclaytonnc.org/facilities/facility/details/sams-branch-greenway-3)

## GOLF

With six public golf courses, visitors will find challenging rolling hills in the Clayton area, and the wide fairways and tree lined courses along I-95 in Smithfield, Four Oaks, and Pine Level. Play one or more courses for a weekend get-a-way or drop in and play along the way on I-95 or I-40 -- a convenient stop for fun on the links!

### Cardinal Country Club

363 Parrish Memorial Rd., Selma  
919-284-3647  
playcardinalcc.com

### Country Club of Johnston County

694 Country Club Rd., Smithfield  
919-934-4166  
ccjohnstoncounty.com

### Pine Hollow Golf Club

3300 E. Garner Rd., Clayton  
919-553-4554  
pinehollowgolf.com

### Reedy Creek Golf Course

585 Reedy Creek Rd., Four Oaks  
919-934-7502  
reedycreekgolf.com

### Riverwood Golf & Athletic Club

400 Riverwood Dr., Clayton  
919-550-1919  
riverwoodgolfnc.com

### The Neuse Country Club

918 Birkdale Dr., Clayton  
919-550-0550  
neusegolf.com



## MOTORSPORTS

### Galot Motorsports Park

555 Dragstrip Rd., Benson  
919-894-1662  
galotmotorsportspark.com

## DOG PARKS

### Benson Dog Park

100 Water Place Landing, Benson  
919-894-3553  
townofbenson.com

### East Clayton Dog Park

2027 Glen Laurel Rd., Clayton  
919-553-1550  
townofclaytonnc.org/582/east-clayton-dog-park

### Old North State Dog Park

67 JR Rd., Selma  
984-263-0577  
onsfh.com

### Smithfield Dog Park

1220 S. Bright Leaf Blvd., Smithfield  
919-934-2148  
smithfield-nc.com/page/parks\_home

## SWIMMING/SPLASH PADS

### HealthQuest Fitness & Wellnes Center

514 N. Bright Leaf Blvd., Smithfield  
919-938-7581  
healthquestnc.org

### Clayton Municipal Park

325 McCullers Dr., Clayton  
919-553-1550  
townofclaytonnc.org/583/municipal-park



### Smith-Collins Park

E. Lee St., Smithfield  
919-934-2148  
smithfield-nc.com/page/parks\_home

### Smithfield Recreation and Aquatics Center

600 M. Durwood Stephenson Pkwy., Smithfield  
919-934-1408  
smithfield-nc.com/page/srac\_home

### Tucker Lake

3025 Allen's Crossroads Rd., Benson  
919-820-9173  
tuckerlake.com

## DISC GOLF

### Kenly Disc Golf

406 S. College Ave., Kenly  
919-588-5090  
udisc.com/courses/kenly-yiXq

### East Clayton Community Park

1774 Glen Laurel Rd., Clayton  
919-553-1550  
townofclaytonnc.org/581/east-clayton-community-park

### Smithfield Community Park

600 Booker Dairy Rd., Smithfield  
919-934-2148  
smithfield-nc.com/parks/parks\_home





**A**gritourism and farming heritage is truly our strength, as it defines many of the visitor experiences available in the county. The county is a leader in the nation in production of cash crops, including tasty sweetpotatoes. Area farmers have expanded their operations to sustain the family farm, offering agritourism activities, on-farm tours, promoting local products with pick-your-own operations, and even becoming wedding venues. Take a trip outside the city to one of our area farms...pick strawberries in the spring and pumpkins in the fall. It's a fun-filled farm day for the whole family! For a statewide experience, download the NC Farms App and find the incredible beauty of our state's rural landscapes and farm products.

[jocogrows.org](http://jocogrows.org)

## SHOP LOCAL FARMS/MARKETS

**6th Generation Strickland Farms**  
1595 Strickland Rd., Clayton  
919-502-9640

**Ashlan Meadows Family Farm**  
1912 Pine Level Micro Rd., Selma  
919-625-0946  
ashlanmeadows.com

**Boykin & Rhodes Farms**  
9076 NC Hwy 222 W., Middlesex  
919-279-7218

**Clayton Farm and Community Market**  
348 E. Main St., Clayton  
Open Saturday mornings, 10am - 1pm  
cfcmnc.org

**Creekside Farm**  
300 Pine Tree Rd., Selma  
919-965-9969  
creeksidefarmberries.com

**Crooked Row Produce**  
111 Roxy Dr., Selma  
919-634-1454

**Hand Picked Nursery**  
233 Ennis Rd., Benson  
919-696-0328  
handpickednursery.com

**Honeycutt's Produce**  
310 Penny Rd., Angier  
919-422-4937  
honeycuttsproduce.wixsite.com/  
honeycuttsproduce

**J & L Produce**  
5837 US Hwy 70 E., Princeton  
919-223-0960  
jandlproduce.com

**Lee's Produce-Benson**  
4010 NC Hwy 50, Benson  
919-625-5161

**Lee's Produce and Garden Center**  
401 W. Main St., Clayton  
919-550-8425

**Pace Family Farms**  
12701 Buffalo Rd., Clayton  
919-398-2698  
pacefamilyfarms.com

**Penny's Produce**  
13238 NC Hwy 210, Benson

**Picalily Farm**  
1522 Freedom Rd., Smithfield  
picalilyfarm.com

**Ronnie's Berry Farm**  
18409 NC Hwy 210, Angier  
919-669-9892  
ronniesberryfarm.com

**Smith's Nursery and Strawberry Farm**  
443 Sanders Rd., Benson  
919-934-1700  
smithsnurseryinc.com

**WDW Strawberry Farm & Roadside Vegetable Stand**  
3510 Progressive Church Rd., Princeton  
919-921-0104

**Wendell Blueberry Farm**  
3160 NC Hwy 231, Wendell  
919-469-0008  
wendellblueberryfarm.com

## SHOP LOCAL PRODUCTS

**Atkinson Milling Company**  
95 Atkinson Mill Rd., Selma  
919-965-3547  
800-948-5707  
atkinsonmilling.com

**Carolina Packers Inc., Home of the Bright Leaf Hot Dog**  
2999 S. Bright Leaf Blvd., Smithfield  
919-934-2181  
carolinapackers.com

**House-Autry Mills**  
7000 US Hwy 301 S., Four Oaks  
800-849-0802  
house-autry.com (shop online)

**Lee's Fresh Market**  
623 Benson-Hardee Rd., Benson  
919-894-2587

**Shamrock's Buzzy Bee**  
200 W. Wellons St., Four Oaks  
919-247-6852  
shamrocksbuzzybee.com

**Stevens Sausage Company**  
3411 Stevens Sausage Rd., Smithfield  
800-338-0561  
stevens-sausage.com

# BEER WINE SHINE *trail*

**Y**ou can tour local vineyards and enjoy wine tastings, determine which is your favorite craft beer at one of four breweries, sip on rum or learn about the legacy of five generations of moonshiners. Complete four stops for a free gift from the Visitors Bureau, and eight stops for a free gift from the partner of your choice.

[beerwineshinetrail.com](http://beerwineshinetrail.com)



## **Broadslab Distillery**

During tours and tastings of NC's first farm distillery, visitors will learn about the grain-to-glass process used to make premium, handcrafted spirits. 4834 NC Hwy 50 S., Benson 919-207-1366 [broadslabdistillery.com](http://broadslabdistillery.com)

## **Deep River Brewing Co.**

Johnston County's first legal brewery opened in 2013. Large indoor/outdoor area, 24 beers on draft, food trucks, and fun events. 700 W. Main St., Ste. 102, Clayton 919-585-2296 [deepriverbrewing.com](http://deepriverbrewing.com)

## **Fainting Goat Brewing Co.**

A small, independent, veteran and woman owned brewery offers a variety of handcrafted brews in a casual atmosphere. 102 W. Parrish Dr., Benson 919-701-1500 [faintinggoatbeer.com](http://faintinggoatbeer.com)

## **Gregory Vineyards**

A great place to relax, taste some wine, or hold a wedding. Take a tour of the picturesque vineyards on this 135-acre working farm. 275 Bowling Spring Dr., Angier 919-894-7700 [gregoryvineyards.com](http://gregoryvineyards.com)

## **Hinnant Family Vineyards**

Take a tour of the vineyards or enjoy a wine tasting at the largest muscadine vineyard in the state with over 100 sprawling acres offering many award-winning wines. 826 Pine Level-Micro Rd., Pine Level 919-965-3350 [hinnantvineyards.com](http://hinnantvineyards.com)

## **InStill Distilling Co.**

This distillery specializes in creating fine craft rum spirits. Tours and tastings by appointment. 710 W. Main St., Clayton 904-233-3887 [instilldistillingco.com](http://instilldistillingco.com)

## **JoCo Brewing Company**

JoCo Brewing Company offers six original taps and patrons will find this a great place to relax with trivia nights, entertainment, and food trucks! 463 Cleveland Crossing Dr., Ste. 100, Garner 919-896-6435 [jacobrewingcompany.com](http://jacobrewingcompany.com)

## **Raleigh Brewing Distro**

This taproom showcases the best of Raleigh Brewing beers, seltzer, and cocktails, also find a variety of appetizers and sandwiches at the in-house Chelsea Café. 3174 Hwy 70 W., Smithfield 984-201-0811 [raleighbrewing.com/raleigh-brewing-distro](http://raleighbrewing.com/raleigh-brewing-distro)

## **SIP & STAY PACKAGE**

The Sip & Stay package offers a wonderful weekend itinerary for couples, girlfriends, craft beer and wine enthusiasts, and anyone that enjoys discovering spirits, and tasting local chef-driven food, and great barbecue. Simply make a reservation at a participating hotel and upon check-in receive a gift bag with coupons, itineraries, and free gifts.

[johnstoncountync.org/sipandstay](http://johnstoncountync.org/sipandstay)



take something with  
**You**



**S**hopping is the #1 reason to visit Smithfield and Selma -- look for outlet savings at Carolina Premium Outlets' 80 stores, then head to Dewayne's for boutique shopping and more. For a variety of unique shops explore our downtown shopping districts and grab a bite to eat as well!

“SHOP FOR SAVINGS AND UNIQUE GIFTS TO TAKE BACK HOME...FOR YOURSELF, YOUR HOME, OR FOR YOUR FAMILY.”



[johnstoncountync.org/shopping](http://johnstoncountync.org/shopping)

## ANTIQUES & FLEA MARKETS

### Barn Shelter Antiques

109 N. Raiford St., Selma  
919-631-0960

### Brightleaf Flea Market

2320 S. Bright Leaf Blvd., Smithfield  
919-934-4111  
brightleafleamarket.com

### Clayton Design & Salvage

96 Pecan Ln., Ste. 103, Clayton  
919-931-4944

### Collected Treasures

5533 NC Hwy 42 W., Ste. A14-16, Garner  
919-803-8108

### Country Boy Antiques & Bottle Shop

104 E. Anderson St., Selma  
252-270-4728

### Cousin's Antiques

14119 Buffalo Rd., Archer Lodge  
919-669-9743

### Farmhouse Vintage Treasures

208 E. Main St., Benson  
919-894-6068  
farmhousevintagetreasures.com

### Harper's Flea Market Mall

1410 S. Bright Leaf Blvd., Smithfield  
919-989-7280

### Kelly's Antiques and Thrift Shop

508 S. 7th St., Smithfield  
919-975-9810

### Morgan's on Main

119 E. Main St., Benson  
919-701-1240  
morgansonmain.com

### Pink Flamingo Thrift & Gift

415 E. Second St., Clayton  
919-550-0166

### Selma Cotton Mill Antique Flea Market

1105 W. Anderson St., Selma  
919-631-7138

### The Pack House

201 W. Harnett St., Benson  
919-669-5463

### The Southern Bostonian

202 N. Raiford St., Selma  
919-351-0043  
thesouthernbostonian.com

### The Twisted Willow

119 S. 3rd St., Smithfield  
919-817-0010  
the-twisted-willow-home-decor.  
myshopify.com

### Trackside Antiques & Collectibles

107 E. Railroad St., Selma  
919-202-4878

### Treasury Antiques

100 S. Raiford St., Selma  
919-965-5335

### Walker's Treasure Box

109 S. Raiford St., Selma  
919-208-3029

### Wheeler Dealer

200 W. 2nd St., Kenly  
919-588-5113  
wheelerdealernc.com

## BOUTIQUES

### Alicious Boutique & Apparel

259 Venture Dr., Ste. C, Smithfield  
919-928-5212  
aliciousboutique.square.site/home

### Anna Kate's Monogramming & Gifts

1004 S. Bright Leaf Blvd., Smithfield  
919-938-9520  
loc8nearme.com/north-carolina/  
smithfield/anna-kates-inc/6225513/

### Boutique 12/20

129 N. 2nd St., Smithfield  
919-550-7721  
boutique1220.com

### Brandy's Boutique and Gifts

30 Old Roberts Rd., Ste. 500, Benson  
919-205-1158  
brandysboutiqueandgifts.  
commentsold.com

### Carley's Formals

3241 US Hwy 70 E., Ste. 107 Smithfield  
919-351-0534  
carleysformals.com

### Carolina Bridal World

721 Venture Dr., Smithfield  
919-989-8787  
carolinabridalworld.com

### Christy's Boutique

1699 Booker Dairy Rd., Smithfield  
919-209-0342  
christysboutiquellc.com



Shop at DeWayne's award-winning, nationally recognized garden center.

Find your favorite seasonal blooms and the outdoor living section with a large selection of cast stone fountains, statuary, and containers. The Boutique at DeWayne's features designer fashions, footwear, handbags & accessories. New to DeWayne's, grab some delicious fudge or an ice cream treat at the Sweet Shop while you shop. During the holidays, don't forget Christmas Land for all your indoor and outdoor decoration needs.

DeWayne's  
1575 Outlet Center Dr., Selma | 919.202.8471  
dewaynes.com

### Classy C's

331 E. Market St., Smithfield  
919-995-8865

### DeWayne's

1575 Outlet Center Dr., Selma  
919-202-8471  
shopdewaynes.com

### Jewel's Formals

101 S. Third St., Smithfield  
919-934-4943

### Magali's Unique & More

103 W. Waddell St., Selma  
919-671-4989  
magalis-unique-more.business.site

### Over the Moon Boutique

49 JR Rd., Ste. D, Selma  
252-205-1782  
overthemoonboutiquenc.com

### Royal Boutique & Company

120 E. Main St., Benson  
919-894-4455  
royalboutiquecompany.com

### Sola Creations Boutique

105 S. Raiford Ste.100, Selma  
919-351-0120  
solacreationsboutique.com

### The Dragonfly Boutique

228 E. Market St., Smithfield  
shopthedragonflyboutique.com

### Tootsies Boutique

331 E. Main St., Clayton  
919-585-2220

## BUY LOCAL ART

### Artmosphere Community Arts Center

3919 Raleigh Rd., Clayton  
919-938-8015  
artmospherecac.com

### Frank Grubbs Pottery

101 Cobblestone Ct., Smithfield  
919-631-9705

### Heart2Hands Art Gallery and Studios

472 E. Second St., Clayton  
919-359-9006  
heart2hands.art

### Right Angles Framing & Art

216 W. Main St., Clayton  
919-553-2486  
rightanglesart.com



### Strickland Art Gallery

115 S. Raiford St., Selma  
919-274-6250

### The Crowing Hen

325 E. Main St., Clayton  
919-333-9261  
thecrowinghenofclayton.com

## COUNTRY STORES

### Clayton General Store

1025 Outlet Center Dr.,  
Ste. 270, Smithfield  
919-300-1166  
premiumoutlets.com

### Downtown Selma General Store

126 N. Raiford St., Selma  
919-634-9004

### Ronnie's Country Store

280 US Hwy 701 S., Four Oaks  
919-989-3045

### Sandhu's Cleveland Emporium

9005 Cleveland Rd., Clayton  
919-934-4898

### Stanfield's General Store

105 N. Main St., Four Oaks  
919-963-9607  
stanfieldsgeneralstore.com



**ATKINSON'S**  
SINCE 1757

Atkinson's grist mill has been in continuous operation for more than 260 years. The cornmeal is stone ground and is noted for its quality.

Products include: hush puppy mix, biscuit mix, funnel cake mix, seafood breeder, chicken breeder and more. Stop by the office and pick out your favorite product.

Gift packs that are perfect for the southern cook in your family are available for shipping. Products are available at many retail stores in North Carolina or may be purchased on the website.

Atkinson Milling Company  
95 Atkinson Mill Rd., Selma | 1-800-948-5707  
atkinsonmilling.com



## HOME DECOR & VARIETY

### Auntie's Cottage

222 W. Main St., Clayton  
919-630-6417

### Bexley House

408 E. Main St., Clayton  
919-926-9656  
bexleyhouse.com

### Hank E. Panky Farm & Soap Shop

117 S. Railford St., Selma  
919-538-6794  
hankepankyfarm.com

### Lexi and the Chi

259 Venture Dr., Ste. G,  
Smithfield, NC 27577  
(252) 373-0718  
lexiandthechi.com

### Oak City Collection

105 S. Third St., Smithfield  
919-333-5252  
oakcitycollection.com

### Salvaged Heirlooms

103 W. Main St., Benson  
919-437-0752  
salvagedheirloomsnc.com

### The Market at Three Little Birds

225 E. Main St., Clayton  
919-585-4648  
threelittlebirdsnc.com

## OUTLETS

### Bealls Outlet

1229 N. Bright Leaf Blvd., Smithfield  
919-209-0521  
bealls.com/bealls

### Carolina Apparel & Sport

49 JR Rd., Selma  
919-202-0777  
carolinaapparel.com

### Carolina Premium Outlets

1025 Outlet Center Drive, Smithfield  
919-989-8757  
premiumoutlets.com/outlet/carolina

### JR Cigar Outlet

67 JR Rd., Selma  
919-965-5055  
jrselma.com

## Spa & Pool Outlet

49JR Rd., Ste. G, Selma  
919-772-7745  
spapooloutlet.com

## SPECIALTY SHOPPING

### 2nd Street Store

102 W. Second St., Kenly  
919-284-1113

### Edmond's Libby's Gifts

115 E. Main St., Benson  
919-894-3272

### NC Paper Company

103 S. Railroad St., Micro  
919-284-3313  
ncpaperco.com

### Ogi Designs

206 S. Main St., Four Oaks  
919-625-1988  
ogifurniture.com

### Old Records Off the Shelf (Vinyl Records)

101 W. S. Railford St., Four Oaks  
919-210-5704

## RC Hobby Nook

150-D S. Equity Dr., Smithfield  
919-934-5931  
rchobbynook.com

## Roy's Western Store & Repair

109 S. Market St., Benson  
910-890-1364

## SAS Shoes

255-A N. Equity Dr., Smithfield  
919-989-6190  
sasshoes.com

## SIT Wood and Leather Works

117 S. Market St., Benson  
919-670-5876  
sitwoodandleather.com

## Springhill Outfitters

773 Seafood House Rd., Selma  
919-351-0764  
springhilloutfitters.com

## Travel Store and Gift Shop

201A E. Main St., Benson  
919-701-1330  
smallworldtravelandtours.com/store



# Girls Weekend

Any time is a great time to visit Smithfield for a shopping weekend. Enjoy several coupon deals from local stores, area museums, Hinnant Winery, and several restaurants...just for you and your girlfriends.

Make reservations with participating hotels mentioning "Girls Weekend" for a special rate, and to receive a gift bag upon check-in with a free gift.

**JOIN THE VIP CLUB FOR OUTLET DEALS!**

[johnstoncountync.org/girlfriends](http://johnstoncountync.org/girlfriends)



  
**CAROLINA  
PREMIUM OUTLETS**<sup>®</sup>  
A SIMON CENTER

**C**arolina Premium Outlets is Eastern North Carolina's premier shopping destination. You'll find more of what you're looking for with over 80 stores. The center features upscale outlet stores including Adidas, Aeropostale, American Eagle, Carolina Pottery, Coach Outlet, Chico's, Ann Taylor, J.Crew Factory, Michael Kors, NIKE Factory Store, Polo Ralph Lauren Factory Store, Talbots Outlet, Under Armour, and many more. For a current list of stores, visit [premiumoutlets.com/outlet/carolina/stores](http://premiumoutlets.com/outlet/carolina/stores).

Carolina Premium Outlets, an easy to navigate outdoor shopping experience, has quick dining options including From the Ashes BBQ, Auntie Anne's Soft Pretzels, and Dairy Queen, with several options at exits 97 and 95 offering national chain restaurants.



## EXIT 95

Conveniently located at exit 95 off I-95 in Smithfield, NC, the center offers the following amenities for your next shopping experience.

- ADA Parking & Wheelchairs
- Military & Veteran Parking
- Motor Coach Parking
- EV Charging Stations

Services at the Mall office: ATM, Charging Stations, Lost and Found, Announcements, and more.

Join the **VIP Shopper Club** to receive rewards, discounts and more. Plus, it's free. Get early access to seasonal sales. Score invites to VIP-only events. Print VIP-only deals, or save your favorites and redeem from your phone. It pays to be a VIP!

Special events and activities will bring you back time and time again include holiday sidewalk sales, back to school sales, and the biggest of them all, **Midnight Madness** on Thanksgiving night to kick off the Christmas shopping season.

Monday-Thursday, 10am-8pm, Friday & Saturday, 10am-9pm, Sunday 12-6pm. Visitor information is available in the administration office next to Nike and in the lounge behind Polo Ralph Lauren. Hours may adjust during the holiday season, check the website for hours.

## CLOTHING, SHOES, SPORTS APPAREL

### Adidas

919-209-9762

### Aerie

919-938-3013

### Aeropostale

919-989-0154

### American Eagle Outfitters

919-938-3013

### American Giant

919-938-8248

### Ann Taylor Factory Store

919-989-7270

### Bella Esposa

919-915-2253

### Brooks Brothers

919-989-6328

### Casual Male XL

919-989-7751

### Champion

919-989-0199

### Chico's

919-209-0408

### Columbia Factory Store

919-300-4009

### Eddie Bauer Outlet

919-989-8570

### Forever 21

919-300-7009

### Gap Factory

919-989-7158

### Hanes Brands

919-934-0548

### Hot Topic

919-209-0032

### J.Crew Factory Store

919-209-0035

### Jockey

919-989-7676

### Journeys

919-934-5040

### Lane Bryant Outlet

919-300-4249

### Levi's Outlet Store

919-934-7203

### LOFT Outlet

919-209-0230

### Nautica

919-934-6870

### NIKE Factory Store

919-989-6100

### PacSun

919-934-6660

### Polo Ralph Lauren

919-938-6140

### Reebok Outlet

919-975-3183

### Rue21

919-205-2915

### Talbots Outlet

919-209-0190

### Timberland

919-934-4300

### Tommy Hilfiger

919-989-1940

### Torrid

919-205-3065

### Under Armour

919-209-0466

### Uniform Destination

919-989-4084

### Woodbridge

917-385-3888

### Zumiez

984-250-7555

## SPECIALTY GIFTS, PHONE, LUGGAGE

### Bath & Body Works

919-934-1946

### BoxLunch

919-336-2329

### Cricket Wireless

919-934-2202

### Direct Tools Factory Outlet

919-934-7780

### Fanatics by Lids

919-437-7277

### Go! Calendars, Games & Toys

925-434-4793

### Pro Image Sports

919-205-1405

### Southern Attitude

919-938-8417

### Spencer's

919-912-5813

### Yankee Candle

919-938-1188

## FOOD RETAIL & RESTAURANTS

### Auntie Anne's Pretzels

919-209-0096

### Dairy Queen Grill and Chill

919-934-0066

### From the Ashes

919-300-1194

### Pepper Palace

984-201-3053

## HOME DÉCOR

### Carolina Pottery

919-934-1157

### Clayton General Store

919-300-1166

## CHILDREN'S FASHION

### Carter's

919-989-7778

### Polo Ralph Lauren

Children Factory Store

919-934-6999

### The Children's Place

919-938-0078

## JEWELRY & ACCESSORIES

### Claire's

919-989-6966

### Coach Outlet

919-934-9089

## FOSSIL

919-938-6134

### Jewelry Outlet

919-934-3400

### Kate Spade New York

919-934-0459

### Kay Jewelers Outlet

919-938-2444

### Lee Jewelry & Cell Phone

252-341-8201

### Lee Jewelry Outlet

919-300-1064

### Michael Kors

919-934-2419

### Samsonite

919-989-9506

### Sunglass Hut

919-989-8080

### Zales Outlet

919-209-0000

## MAKEUP & PERFUME

### Perfumania

919-934-5619

### Perfume Outlet

919-938-0809

### The Cosmetics Company Store

984-409-7004

## SHOE STORES

### 252 Kicks

919-938-8086

### Clarks

919-934-0615

### Crocs

919-934-0073

### Rack Room Shoes

919-934-4222

### Skechers

919-989-2133

## Carolina Premium Outlets/Visitor Center

1025 Outlet Center Drive, Smithfield

919-989-8757

[www.premiumoutlets.com/outlet/carolina](http://www.premiumoutlets.com/outlet/carolina)



breaking bread

Together



Included in our visitors guide is a sample of restaurants in the county. Visit our website for more options. We have also curated a variety of fun categories and trails to experience including the Red Hot Dog Trail, JoCo BBQ Trail, Cuppa Joe Trail, and more.

If you consider yourself a “foodie” and want to support locally sourced foods from our area farmers -- you will find that in JoCo too.



“DINING TIP: OUR SOUTHERN BREWED ICED TEA WILL BE SERVED VERY SWEET.”



[johnstoncountync.org/restaurants](http://johnstoncountync.org/restaurants)

## AMERICAN

### 815 Gourmet Grill

721 N. Bright Leaf Blvd., Ste. 15, Smithfield  
919-205-1841  
815gourmetgrill.com

### Barley & Burger Smashed

728 N Bright Leaf Blvd, Smithfield  
919-300-1086  
barleyandburgersmashed.com/

### Bob Evans

907 Venture Dr., Smithfield  
919-938-1267  
bobevans.com/locations/smithfield

### Buffalo Wild Wings

130 S. Equity Dr., Smithfield  
919-938-1250  
buffalowildwings.com

### Carolina Bleu Grille

13049 US Hwy 70 W., Clayton  
919-585-6903  
carolinableugrille.com

### Cleveland Drafft House

461 Shotwell Rd., Clayton  
919-550-3723  
6101 NC Hwy 42 W., Garner  
919-771-2337  
clevelanddrafft.com

### Clubhouse at Cleveland Square

51-A Technology Dr., Garner  
919-662-2207  
clubhouse4042.com

### Crawford Cookshop

401 E. Main St., Clayton  
919-585-6055  
crawfordcookshop.com

### Eggs Up Grill

12965 US Hwy 70 Bus., Clayton  
984-213-4473  
eggsupgrill.com/clayton

### First Street Tavern

115 E. First St., Clayton  
919-585-2101  
firststreettavern.com

### Golden Corral

100 Town Center Place, Smithfield  
919-989-1125  
goldencorral.com

### Heidi's Two-Wheel Café

1475 W. Market St., Smithfield  
919-989-8389  
heidistwowheelcafe.business.site

### Iron Skillet Restaurant

923 Johnston Pkwy., Kenly  
919-502-7008  
kenly95.com/eat/restaurant/iron-skillet

### Jones Cafe

415 E. Main St., Clayton  
919-553-7528

### Lowell Mill Restaurant

595 Bagley Rd., Kenly  
919-284-5141

### Manning's

406 E. Main St., Clayton  
919-585-7005  
manningsonmain.com

### McKinley's Restaurant & Pub

11751 US Hwy 70 Bus. W., Clayton  
919-553-5534  
mcpubctown.com

### Ruby Tuesday

65 Son-Lan Pkwy., Garner  
919-772-3838  
rubytuesday.com/locations/clayton

### Skylines Café and Bar

8878 US Hwy 70 Bus. W., Ste. 100, Clayton  
919-550-7619  
skylinescafe.com

### The Gilded Pear Brew House

234 E. Market St., Smithfield  
919-938-9020  
gildedpearbrew.com

### Tavern 42

119 Oleander Dr., Clayton  
919-553-8888

### Vinson's Pub & Eatery

800 E. Main St., Clayton  
919-585-7191  
vinsonspub.com

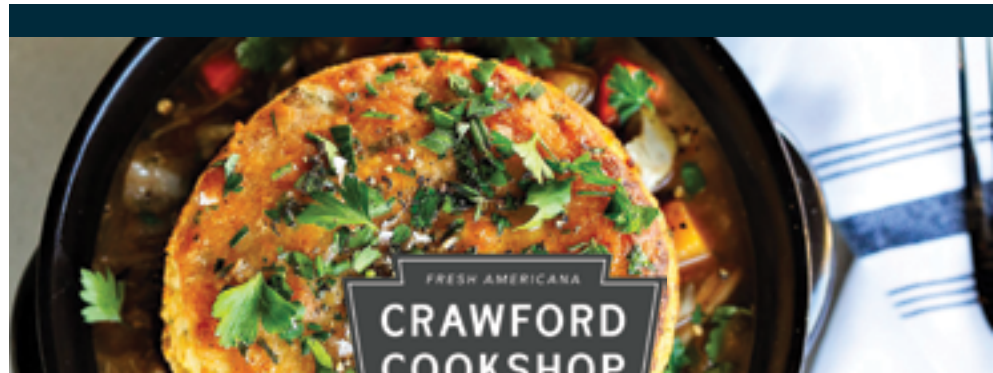
### Zack's Char-Grill

618-B E. Market St., Smithfield  
919-989-9227

## ASIAN

### Kobe Japanese Steakhouse

820 Gullely Dr., Clayton  
919-359-9060  
kobeclaytonnc.com  
101 Venture Dr., Smithfield  
919-938-3200  
kobesmithfield.com



James Beard nominated Chef, Scott Crawford, has brought his delicious “Americana” style cooking celebrating the seasons and time-honored dishes to Downtown Clayton. Located in a restored, historic building, guests will discover dishes such as crispy catfish sandwiches, saucy ribs, big seasonal salads, hearty entrees, and comforting desserts served alongside delicious wines, cocktail favorites, and local craft beer.

Crawford Cookshop was designed for guests celebrating all occasions – enjoying weeknights with family, date nights on the weekend, and groups of all sizes, in all seasons.

Crawford Cookshop  
401 E. Main St., Clayton | 919.585.6055  
crawfordcookshop.com

## Nai Thai Xpress

67 Jr Road, Ste. 300, Selma  
984-263-0577  
onsfh.com/nai-thai-xpress

## Sushi Iwa Asian Bistro & Bar

11629 US Hwy 70 Bus. W., Clayton  
919-585-6140  
sushiiwa.org

## Yi GE Asian Cuisine

12849 US Hwy 70 Bus. W., Clayton  
919-550-5115  
yigeasiancuisine.com

## BAKERIES

### Burney's Sweets & More

517 Outlet Center Dr., Smithfield  
919-300-1691  
burneysweetsandmore.com

### Clayton Bakery & Café

8970 US Hwy 70 Bus. E., Clayton  
919-550-5300  
claytonbakery.com

### Donut Daily

106 Bratton Dr., Ste. 3, Garner  
919-322-2354

### Emma's Bakery

110 S. Bright Leaf Blvd., Smithfield  
919-300-1874

### HannahCakes Bakery

102 W. Main St., Pine Level  
919-634-0011

### Jenny's Sweet Creations

221 E. Main St., Benson  
919-207-0381

### JP's Pastry

111 S. Railroad St., Benson  
919-894-5000  
jpspastry.com

### Ms. B's Bake Shop

11760 NC Hwy 210, Ste. 210, Benson  
919-938-9006  
msbsbakeshopllc.com

### Nancy Jo's Homemade

200 E. Main St. #103, Clayton  
919-333-7895  
nancyjoshomemade.com/clayton

### Noe's Bakery

417 E. Second St., Clayton  
919-243-0209

## Outta The Box Cakes and Confections

108 S. Pine St., Princeton  
919-617-8200

## Panadería y pastelería el Rey

1112 S. Pollock St., Selma  
919-631-9544

## The Icing on the Cake

5900 US Hwy 301 S., Four Oaks  
919-538-0595

## The Peach Cobbler Factory

1258 N. Bright Leaf Blvd., Smithfield  
919-938-8099  
peachcobblerfactory.com

## BARBECUE

### Daddy D's BBQ

203 S. Walton Dr., Benson  
919-701-1277  
daddysbbqnc.com

### From the Ashes

1025 Outlet Center Dr., Ste. F3 Smithfield  
919-300-1194  
fromtheashessmokehouse.com

### JP's Chicken & Ribs

4056 US Hwy 301 S., Four Oaks  
919-934-0107

### J-Top's BBQ Shop

8948 Cleveland Rd., Ste. 104, Clayton  
919-934-0093  
jtopsbbsqshop.com

### Low and Slow Smokehouse

3149B Swift Creek Rd., Smithfield  
919-578-6479  
lowandslowsmokehouse.com

### The Redneck BBQ Lab

12101-B NC Hwy 210, Benson  
919-938-8334  
theredneckbbqlab.com

### Smithfield's Chicken 'N Bar-B-Q

10414 US-70 Bus., Clayton  
919-553-4553

15 Publix Dr., Clayton  
919-371-2722

5180 NC Hwy 42 W., Garner  
919-773-0774

1260 N. Bright Leaf Blvd., Smithfield  
919-934-8721  
scnbnc.com



## SoDoSoPa

146 S. Third St., Smithfield  
919-205-1076  
sodosopa.biz

## Stephenson's Bar-B-Q

11964 NC Hwy 50 N., Willow Springs  
919-894-4530

## Stormin' Norman's Barbecue

404 S. Church St., Kenly  
919-284-0061  
storminnormansbbq.com

## White Swan Bar-B-Q

3198 US Hwy 301 S., Smithfield  
919-934-8913

3655 Wilsons Mills Rd., Wilson's Mills  
919-989-6500  
whiteswanbarbeque.com

## COFFEE SHOPS

### 2nd Street Coffee & Café

102 E. Second St., Kenly  
919-588-5159

### 9BAR Coffeehouse

411 Athletic Blvd., Clayton  
919-508-6845  
9barcoffeehouse.com

### Arise Coffee Cottage

17056 Buffalo Rd., Wendell  
919-365-5416

### Backporch Brew

105 N. Main St., Four Oaks  
919-963-9607

### Boba Beans Bistro

50 Neuse River Pkwy., Ste. 1, Clayton  
919-585-7971  
bobabeansclayton.com

### Bon Voyage Coffee Co.

203 N. Main St., Four Oaks  
919-628-1010

### Boulevard West

104 W. Main St., Clayton  
919-243-1384

### Caribou Coffee

923 Johnston Pkwy., Kenly  
919-503-7010  
kenly95.com/eat/restaurant/caribou-coffee

**Coffee on Raiford**

123 N. Raiford St., Selma  
919-634-9669  
coffeeonraiford.com

**Cornerstone Café & Coffee**

101 W. Main St., Benson  
919-701-1600  
cornerstonecafe.coffee

**Dunkin'**

11960 NC Hwy 210, Benson  
919-701-5060

2627 Hwy 42 E., Clayton  
919-268-2320

770 Enterprise Dr., Clayton  
919-359-8464

101 Commerce Pkwy., Garner  
984-480-6194

446 US Hwy 70 E., Selma  
919-965-2354

1006 N. Bright Leaf Blvd., Ste. 100, Smithfield  
919-323-3303  
dunkindonuts.com

**JoCo Coffee Co.**

67 JR Rd., Ste. 300, Selma  
984-263-0577  
onsfh.com/joco-coffee-co

**Milltown Java**

116 S. Center St., Princeton  
919-617-8006

**Scooter's Coffee**

701 N. Bright Leaf Blvd., Smithfield  
919-300-1693

10534 US Hwy 70 Bus., Clayton  
877-719-1288  
scooterscoffee.com

**Starbucks Coffee Co.**

13024 US Hwy 70 W., Ste. 103, Clayton  
919-359-0690

67 Flowers Crossroads Way, Clayton  
919-359-8023

110 S. Equity Dr., Smithfield  
919-621-4996  
starbucks.com

**The Grind Coffee House & Creamery**

607A E. Main St., Benson  
919-701-1013  
thegrindcoffeecrea.wixsite.com/home

**Ugly Mug Bean & Brew**

51-E Technology Dr., Garner  
919-916-5277  
umcoffee.com

**CREOLE****Mama Nem's**

103 S. Raiford St., Selma  
919-539-4334  
mamanems.com

**DELI/SANDWICH SHOP****Big Steve's Bagels**

12330 NC Hwy 210, Benson  
919-989-8006

**Gotham's Deli**

224 E. Market St., Smithfield  
919-934-9100  
gothamsdeli.com

**Hwy 42 Café & Hershey's Ice Cream**

36 Flowers Crossroads Way, Ste. 102, Clayton  
919-359-9897  
hwy42cafe.com

**One Stop Deli & Café**

1547 E. Market St., Ste. 105, Smithfield  
919-300-1645

**Pixie Dust Lunch Box & Bakery Shoppe**

107 N. Webb St., Selma  
919-351-0255

**Saks Neighborhood Deli**

876 Gulley Dr., Clayton  
919-550-8100  
saksdeli.com

**Snacks Provision Company**

1130 W. Main St., Clayton  
919-243-1966  
snacksnc.com

**St. George Subs & Grill**

11841 US Hwy 70 Bus. W., Clayton  
919-879-8382  
stgeorgesub.com

**Waffle Station**

317 US 301 South, Micro  
919-588-5182  
wafflewagon.com



Find some of the best award-winning competition BBQ available anywhere in NC at Redneck BBQ. Choose from pulled pork, brisket, turkey, ribs and chicken served with sides such as slow-cooked baked beans, green beans, collards like your mama used to make, jalapeño mac and cheese, and slaw. The sauces, cornbread, and rubs are available to buy.

The Redneck BBQ Lab is owned and operated by members of the Redneck Scientific competition barbecue team.

The Redneck BBQ Lab  
12101-B NC Hwy 210, Benson | 919.938.8334  
theredneckbbqlab.com



**OLD NORTH STATE**  
**FOOD HALL**

**One Memorable Location, Many Flavorful Journeys!**

The Old North State Food Hall is the nation's first roadside food hall offering an alternative to the usual fast food options for travelers. The food hall vendors are a mix of regional and international cuisines. The Longleaf Tavern is a full-service bar serving local craft beverage and additional food hall seating.

Check out the full line-up of food vendors:

**Aroma de Cuba**  
**Curry in a Hurry**  
**JoCo Coffee Co.**  
**Luna Pizza Cafe**

**Nai Thai Xpress**  
**The Hot Dog Bar**  
**The Ice Storm**

**Old North State Food Hall**  
**67 Jr Rd., Ste. 300, Selma | 984.263.0577**  
**onsfh.com**

**ICE CREAM**

**Baskin Robbins**  
 770 Enterprise Dr., Clayton  
 919-359-8464  
 baskinrobbins.com

**Cellic Creamery**  
 257 NC Hwy 210, Smithfield  
 919-205-1947  
 celliccreameryjoco.com

**Cold Stone Creamery**  
 150-A S. Equity Dr., Smithfield  
 919-938-1300  
 coldstonecreamery.com/stores/21463

**Culver's of Clayton**  
 11959 US Hwy 70 Bus W., Clayton  
 919-243-8448  
 culvers.com/restaurants/clayton-nc-us-hwy-70

**Dairy Queen**  
 11697 US Hwy 70 Bus. W., Clayton  
 919-553-2529  
 923 Johnston Pkwy., Kenly  
 919-502-7044  
 1025 Outlet Center Dr., Ste. 910, Smithfield  
 919-934-0066

**Hills of Snow**  
 110 S. Bright Leaf Blvd., Smithfield  
 919-795-7461

**Kandy & More**  
 155 Meghan Circle, Selma  
 919-822-4049

**Old Fashioned Ice Cream**  
 124 N. Raiford St., Selma  
 919-351-0505

**Serving Up Scoops**  
 121 W. Pine St., Pine Level  
 919-351-4055

**Sisters II Ice Cream**  
 108 S. Market St., Benson  
 919-820-4076  
 sisters2icecream.com

**Sweet Frog Premium Frozen Yogurt**  
 1261 N. Bright Leaf Blvd., Smithfield  
 919-938-9039  
 sweetfrog.com/stores/frozen-yogurt-smithfield/35276

**Sweet Southern Snoballs**  
 1507 W. Market St., Smithfield  
 919-291-3355

**The Ice Storm**  
 67 JR Rd., Ste. 300, Selma  
 984-263-0577  
 onsfh.com/the-ice-storm

**The Scoop Deck**  
 5900 US Hwy 301 S., Four Oaks  
 919-538-0595

**Vida Dulce**  
 11755 US Hwy 70 Bus. E., Clayton  
 919-243-0954  
 vidadulcenc.com



## INDIAN

### Curry in a Hurry

67 JR Rd., Ste. 300, Selma  
984-263-0577  
onsfh.com/curry-in-a-hurry

### Tandoori Trail

227 E. Market St., Smithfield  
919-205-1668  
tandooritrail.com/smithfield-nc

## ITALIAN

### Anthony's Italian Pizza & Pasta

12989 US Hwy 70 Bus. W., Clayton  
919-550-3204  
anthony slampiazza.net

### Jordana's Pizzeria & Italian Ristorante

309 S. Walton Dr., Benson  
919-894-5559

### La Cucina Italiana

110 Flowers Crossroads Way,  
#105, Clayton  
919-550-2452  
lacucinanc.com

### La Piazza

7277 NC Hwy 42 W., Raleigh  
919-662-5007  
anthony slampiazza.net

### La Piazza Express

12330 Hwy. 210, Ste. 109, Benson  
919-934-2322  
anthony slampiazza.net

### Luna Pizza Cafe

67 JR Rd., Ste. 300, Selma  
984-263-0577  
onsfh.com/luna-pizza

### Nik's Pizza

406 S. Church St., Kenly  
919-284-4255  
nikspizza.wixsite.com/niks-pizza

### Niko's Pizza and Bar

9005 Cleveland Rd., Clayton  
919-300-1695

### Venero's Pizzeria

9973 US Hwy 70 Bus. W., Clayton  
919-553-0761  
venerospizza.com

### Vero's Pizzeria

519 Outlet Center Dr., Smithfield  
919-938-9033  
verospizzeria.com

## LATIN/CARIBBEAN

### Aroma de Cuba

67 JR Rd., Ste. 300, Selma  
984-263-0577  
onsfh.com/aroma-de-cuba

### Caribbean Delight

11471 US Hwy 70 Bus., Clayton  
919-248-1618

### Jamaica Bites

11478 US Hwy 70 Bus. W., Clayton  
919-243-1240  
jamaica-bites-restaurant.business.site

## MEXICAN

### Don Beto's Tacos

10376 US 70 Hwy 70 Bus. W., Clayton  
919-359-0095  
donbetosnc.com/clayton

720 Ricks Rd., Selma  
919-202-4566  
donbetostogo.com

### Don Beto's Tacos Y Tequila

36 Flowers Crossroads Way, Clayton  
984-263-0983  
donbetostacosytequila.com

### El Barzon Mexican

1691 S. Bright Leaf Blvd., Smithfield  
919-205-1661

### El Charro Mexican

709 S. Wall St., Benson  
919-207-2806  
elcharrobenson.com



## CLAYTON NIGHTLIFE

For a night out on the town, check out what's happening in Downtown Clayton! Locals and visitors have found a growing nightlife scene in a very walkable downtown. Visit often for locally brewed craft beer, wines shops, restaurants with rooftop bars, cocktails made with legal moonshine, several area lounges, and taverns too.

Crawford Cookshop  
919.585.6055  
crawfordcookshop.com

Deep River Brewing Co.  
919.585.2296  
deeperiverbrewing.com

First Street Tavern  
919.585.2101  
firststreettavern.com

Instill Distilling Co.  
919.233.3887  
instilldistillingco.com

LaDiDa Wine Shop  
919.585.2185  
laidanc.com

Manning's Restaurant  
919.585.7005  
manningsonmain.com

Revival 1869  
904-243-2964  
revival1869.com

Vinson's Pub & Eatery  
919.585.7191  
vinsonspub.com

### **Fiesta Mexicana**

12524 NC-210, Ste. 106, Benson  
919-989-8001

702 E. Parrish Dr., Benson  
919-207-5845

957 Town Center Blvd., Clayton  
919-550-8888

5131 NC Hwy 42 W., Ste. 270, Garner  
919-772-5498  
fiestamexicananc.com

### **La Cocina Mexican**

764 Shotwell Rd., Clayton  
919-550-7323

1285 N. Bright Leaf Blvd., Smithfield  
919-938-7002  
lacocinanc.com

### **Mariscos El Patron 323 Clayton**

905 E. Main St., Clayton  
919-585-2206  
elpatron323.com/elpatronclayton

### **Mariscos El Patron 323 Smithfield**

712 E. Market St., Smithfield  
919-205-1141  
elpatron323.com/patronsmithfield

### **Mezcalito Grill & Tequila Bar**

229 Briarclif Dr., Ste. A, Clayton  
919-243-0653  
mezcalitogrill.com

### **San Marcos Mexican**

275 N. Equity Dr., Smithfield  
919-934-2424  
sanmarcosrestaurant.com

### **Tacos y Burritos California**

11538 US Hwy 70 W., Clayton  
919-585-2736  
tacosyburritoscalifornia.com

## **SOUTHERN**

### **Barefoot's Country Store & Grill**

3295 US Hwy 701 S., Four Oaks  
919-989-9180

### **Cracker Barrel**

1109 Outlet Center Dr., Smithfield  
919-989-2140

5199 NC Hwy 42 W., Garner  
919-661-4044  
crackerbarrel.com

### **Four Oaks Restaurant & Grill**

203 W. Wellons St., Four Oaks  
919-963-2289

### **Meadow Village Restaurant**

7400 NC Hwy 50 S., Benson  
919-894-5430  
meadowrestaurant.biz

### **Parkside Café**

2176-A US Hwy 70-A, Pine Level  
919-965-4100  
parksidecafenc.com

### **Pat's Grill**

803 S. Wall St., Benson  
919-894-8474

### **Robbins Nest**

121 US Hwy 70-A E., Selma  
919-965-5522

### **Rockin' Comet Diner**

11637 US Hwy 70 Bus. W., Clayton  
919-550-6060

### **The Chicken Barn**

703-B E. Market St., Smithfield  
919-934-6866  
thechickenbarn.net

### **The Diner**

314 E. Market St., Smithfield  
919-934-6644

## **STEAKHOUSE & SEAFOOD**

### **Clayton Steakhouse**

307 E. Main St., Clayton  
919-553-2299  
theclaytonsteakhouse.com

### **Crab Seafood House**

877 Town Centre Blvd., Clayton  
919-243-1105  
crabseafoodhouse.com

### **Fry Daddy's Fish House**

25-A JR Rd., Selma  
919-334-2525  
frydaddysnc.com

### **Lane's Seafood & Steak House**

275 Bowling Spring Dr., Angier  
919-894-7700  
gregoryvineyards.com

### **Mayflower Seafood Restaurant**

1625 W. Market St., Smithfield  
919-989-1156  
mayflowerseafoodsmithfield.  
webnode.page

### **Olde Towne Steakhouse**

102 E. Main St., Micro  
919-284-1140

### **Outback Steakhouse**

911 Outlet Center Dr., Smithfield  
919-989-3056  
outback.com

### **Smithfield Seafood Restaurant**

150 S. Equity Dr., Ste. G, Smithfield  
919-938-8028  
smithfieldseafoodrestaurantnc.com

### **Southern Vine's Steakhouse & Bar**

3735 NC Hwy 50 S., Benson  
984-279-3599  
southernvinesnc.com

### **Texas Steakhouse & Saloon**

235 Outlet Center Dr., Smithfield  
919-938-3221  
texassteakhouse.com/smithfield-nc

## **VEGAN/VEGETARIAN**

### **Eden's Vegans**

11048 Cleveland Rd., Ste 101, Garner  
919-938-3880  
edensvegetarian.com



# Celebrate with us



**J**ohnston County's rich agricultural history is very evident in many of the area's annual festivals like Benson Mule Days, Smithfield Ham and Yam Festival, and Clayton Harvest Festival. JoCo also has a growing live music scene with national acts headlining local music festivals like Beach Fest held at The Farm each spring!

## MARCH

### **Bentonville Battlefield's Anniversary Event**

Events are held several times during the year, including guided tours, living history events and anniversary events.

Bentonville Battlefield State Historic Site  
5466 Harper House Rd., Four Oaks

910-594-0789

[historicsites.nc.gov/all-sites/bentonville-battlefield](https://historicsites.nc.gov/all-sites/bentonville-battlefield)

### **Easter Jubilee Live @ The Rudy**

You will love the Easter Jubilee, bring the family to enjoy spring music and Easter's message.

Rudy Theatre, 300 N. Raiford St., Selma  
919-202-9927

[rudytheatre.com](http://rudytheatre.com)

## APRIL

### **Beach Fest at The Farm**

Come hear the best beach music bands around!

215 Batten Rd., Selma  
919-750-5464

[thefarmnc.com](http://thefarmnc.com)

“CHECK OUR CALENDAR OFTEN  
AS YOU MAKE YOUR TRAVEL  
PLANS. SEE WHAT SPECIAL EVENT  
OR FESTIVAL IS HAPPENING -  
DON'T MISS OUT ON THE FUN!”

[johnstoncountync.org/events](https://johnstoncountync.org/events)





## MAY

### Clayton Piano Festival Memorial Day Tribute Concert

Hear world-renowned instrumentalists and multi-genre vocalists' favorites.  
919-606-9703  
claytonpianofestival.org

### East Coast Truckers Jamboree

A three-day truck and car show, featuring big rigs, muscle cars, and more.  
923 Johnston Pkwy., Kenly  
919-284-5121  
kenly95.com

### Smithfield Ham & Yam Festival

Head to Smithfield for ham biscuits, barbecue pork, and sweet potatoes. There will be music, arts, crafts, and kid's activities throughout Downtown Smithfield  
919-934-0887  
hamandyam.com

### Throwback Sounds of Summer Live @ The Rudy

The music of Summer! Musical memories that bring back your favorite days on the beach.  
May - July.  
300 N. Raiford St., Selma  
919-202-9927  
rudytheatre.com

## JUNE

### State Annual Singing Convention

Three days of gospel music, a competition including amateur duets, trios, quartets, choirs, and family groups.  
Benson Singing Grove,  
400 E. Main St., Benson  
919-894-4389  
gospelsingingconvention.org

### Summer Living History Series

Discover how Civil War soldiers lived in camp and what role the enlisted man played in battle. Call for program details.  
Bentonville Battlefield State Historic Site,  
5466 Harper House Rd., Four Oaks  
910-594-0789  
historicsites.gov/all-sites/bentonville-battlefield

### Chick-fil-A Three Little Pigs Triathlon

This annual event is held on the 3rd Saturday in June with a 250-yard swim, 14-mile bike ride, and 5K run.  
600 M. Durwood Stephenson Pkwy.,  
Smithfield  
919-631-9847

### 301 Endless Yard Sale

Shop for antiques, collectibles and more along a 100-mile stretch of highway.  
US Hwy 301 Kenly to Benson  
919-989-8687  
301endlessyardsale.com

## AUGUST

### Classic Country Jubilee @ The Rudy

From Hank to Garth, Dolly to Taylor, you'll be toe-tapping, humming, and singing along with this classic country show. August - October.  
300 N. Raiford St., Selma  
919-202-9927  
rudytheatre.com

## SEPTEMBER

### Benson Mule Days

For over 75 years, this four-day family-fun festival has offered mule competitions, rodeos, a carnival, dances and concerts.  
Downtown Benson and Chamber Park, Benson  
919-894-3825  
benonmuledays.com

### Four Oaks Acorn Festival

The festival offers a variety of food, arts and crafts, vendors, children's activities, and a car show.  
Downtown Four Oaks  
919-963-4004  
fouroakschamber.com

### GALOT's PDRA & Monster Truck Throwdown

Join the racing excitement of events at GALOT Motorsports Park held throughout the year.  
555 Dragstrip Rd., Benson  
919-894-1662  
galotmotorsportspark.com

## OCTOBER

### Ava Gardner Festival

The Ava Gardner Museum hosts an annual festival in honor of the legendary actress, humanitarian and NC native who grew up just seven miles east of Smithfield.  
325 E. Market St., Smithfield  
919-934-5830  
avagardner.org

### Clayton Fear Farm

A Haunted Halloween Scream Park including several haunted houses. New horror features added every year.  
1620 Loop Rd., Clayton  
919-553-0016  
claytonfearfarm.com

### Fall Festival at Bentonville Battlefield

Enjoy period games, wagon rides and more! Costumed interpreters will demonstrate domestic skills from the 19th Century.  
Bentonville Battlefield State Historic Site,  
5466 Harper House Rd., Four Oaks  
910-594-0789  
historicsites.nc.gov/all-sites/bentonville-battlefield

### Historical Ghost Walk

Costumed reenactors tell stories about local historical characters. Riverside Cemetery, corner of S. 2nd and Church Streets, Smithfield  
919-934-2836  
jcheritagecenter.org



### Princeton Community Day

Bring your family to enjoy free entertainment, fun activities for kids of all ages, food vendors, crafts, merchandise vendors, and many interesting exhibits.

650 Holt's Pond Rd., Princeton  
919-936-8171

### 49th Annual Selma Railroad Days Festival

Celebrate Selma's train town tradition and railroad heritage with three days of live entertainment, carnival rides, food truck rodeo, vendors, train shows, parade & more!

Downtown Selma  
919-965-9841  
SelmaRailroadDays.com

### St. Ann's Annual International Food Festival

This wonderful festival represents nineteen countries from around the world, with food, music and games. 4057 US 70 Hwy Business W., Clayton  
919-934-2084

internationalfoodfestival.net

### Sonlight Farms Fall Family Events

Fun for all ages, with corn mazes, hay rides, giant slides, pumpkins, and more!

293 Bunn Rd., Kenly  
252-205-5280  
sonlightfarmsnc.com

## NOVEMBER-DECEMBER

### Christmas Jubilee Live @ The Rudy

Take a nostalgic trip back to an innocent age when anticipation of Santa's visit made the holidays magical. Enjoy gospel favorites and contemporary hits like "Christmas in Dixie". Matinees and evening shows.

300 N. Raiford St., Selma  
919-202-9927  
rudytheatre.com

### Christmas Lights on the Farm

Enjoy a hayride through Christmas Town and Field of Lights display, live music and s'mores by the fire pit. Santa will be here taking pictures. Gift shop and concessions.

11959 Hwy 222 W., Middlesex  
919-922-7325  
christmaslightsonthefarm.com

### Clayton Harvest Festival

Enjoy four days of exciting events! Concerts, food for all taste buds, 200 vendors, and Classic Car Show.

Downtown Clayton  
919-553-6352  
claytonharvestfestival.com

### Clayton Piano Festival Holiday Gala

Enjoy a host of fun, family-orientated shows, and accessible, festive concert by world renowned guest artists.

Various Locations - Clayton  
claytonpianofestival.org

### Lights on the Neuse

Come for family Christmas fun to view Christmas lights by hayride. Visit with Santa and see the 3D Christmas Barn. Stand by the fire to warm up and roast marshmallows to make s'mores.

Boyette Family Farms,  
1620 Loop Rd., Clayton  
919-553-0016  
lightsontheneuse.com

### Meadow Lights

The largest and oldest Christmas light display in eastern NC. Also features the largest candy store with over 300 varieties of candy.

4546 Godwin Lake Rd., Benson  
919-669-5969  
meadowlights.com



### Downtown Smithfield Wine Walk

Walkers visit businesses in the downtown district to sample wines at many locations.

Downtown Smithfield  
919-817-0010  
downtownsmithfield.com

### Sonlight Farms Live Nativity

Scheduled from 5pm - 8pm by local churches and will have animals for children to pet. Free.

293 Bunn Rd., Kenly  
252-205-5280  
sonlightfarmsnc.com

### New Year's Eve at The Farm

Ring in the new year at The Farm with wonderful music and dancing. Featuring new bands each year.

215 Batten Rd., Selma  
919-750-5464  
thefarmnc.com



Find some

# Rest



**W**hether you are traveling I-95 or I-40 in North Carolina, our affordable accommodations are a great choice. Just 30 minutes east of Raleigh and the Research Triangle Park for business travel, and mid-way between New York, NY and Jacksonville, FL. If heading through on vacation, we have national brand hotels, affordable roadside motels, and several pet-friendly options.

Whatever your reason for traveling, thank you for choosing us...we appreciate your business.

“WE WISH YOU SAFE TRAVELS  
AND HOPE YOU STAY WITH US  
AGAIN AND AGAIN!”

[johnstoncountync.org/hotels](http://johnstoncountync.org/hotels)



## BENSON

### Days Inn

This 103-room hotel is accessible directly from Exit 79 on I-95, with very affordable rates and is dog friendly.  
202 N. Honeycutt St., Benson  
919-902-5114  
wyndhamhotels.com



### Hampton Inn

This 89-room hotel is located at Exit 79 on I-95, next to the 3-acre Dog Park in Benson, convenient to GALOT Motorsports Park, and Broadslab Distillery.  
100 Water Place Landing, Benson  
919-701-8000  
hampton.com



## CLAYTON HWY 70

### Comfort Suites

This all suite property is in the heart of Clayton and very convenient for corporate travelers to the area and events at The Clayton Center or enjoying dining and nightlife in downtown.  
761 Enterprise Dr., Clayton  
919-553-1234  
choicehotels.com/nc302



### McWade's Inn

This 5 guest room bed & breakfast inn is located in a historic home in Downtown Clayton, providing a warm and inviting experience for guests.  
507 E. Second St., Clayton  
919-333-8591  
mcwadesinn.com



## FOUR OAKS

### Four Oaks Lodging

12 guest rooms motel is rate friendly.  
4606 US Hwy 301 S., Four Oaks  
919-963-3596  
fouroakslodging.com



### Travelers Inn

This 53 ground floor room motel is close to Bentonville Battlefield and Howell Woods.  
97 NC Hwy 96 S., Four Oaks  
919-934-4194



## GARNER/CLAYTON

### Comfort Inn

This 63-room hotel is conveniently located within 15 minutes to Clayton and Downtown Raleigh.  
126 Cleveland Crossing Dr., Garner  
919-773-1110  
choicehotels.com/nc366



### Hampton Inn

This 72-room hotel is conveniently located only 7 miles from Clayton and 12 miles to Downtown Raleigh.  
100 Hampton Dr., Garner  
919-773-1977  
hampton.com



### Holiday Inn Express

This 67-room hotel is conveniently just minutes from Clayton and Downtown Raleigh.  
105 Leone Ct., Garner  
919-719-3415  
hiexpress.com/claytonnc



### Sleep Inn

This 87-room hotel is conveniently located only minutes from Clayton and Downtown Raleigh.  
105 Commerce Pkwy., Garner  
919-772-7771  
choicehotels.com



### Super 8

This 40-room hotel is conveniently located only minutes from Clayton and Downtown Raleigh.  
101 Leone Ct., Garner  
919-661-1991  
wyndhamhotels.com



### WoodSpring Suites

This extended stay property is a great choice for tourists looking for a hotel that offers the comforts of home while away.  
142 Cleveland Crossing Dr., Garner  
919-779-5800  
woodspring.com



## KENLY

### Budget Inn

This motel has 20 guest rooms and is pet friendly with a pet fee.  
212 S. Church St., Kenly  
919-284-5588



### Deluxe Inn

This 24-room motel is convenient to downtown Kenly and is pet friendly.  
403 US Hwy 301 S., Kenly  
919-284-3655



### Motel 6

For the mid-way overnight stop along I-95 in NC, choose this 77-room motel and bring your pet.  
843 Johnston Pkwy., Kenly  
919-284-3800  
motel6.com



### Quality Inn

This 60-room hotel has a convenient location for an overnight stay in Kenly and is pet friendly.  
405 S. Church St., Kenly  
919-284-1000  
qualityinnkenly.com



### Red Roof Inn

This 64-room property is adjacent to the Kenly 95 Truckstop and their food court for the whole family to enjoy.  
1139 Johnston Pkwy., Kenly  
919-284-1050  
redroof.com



## HOTEL SYMBOLS KEY



pet friendly



100% smoke free



outdoor pool



indoor pool



WiFi available



indoor corridors



exercise facility



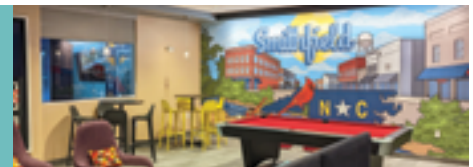
meeting facility



continental breakfast



ADA accessible



## SELMA

### Days Inn

This 60-room hotel is conveniently located near JR Cigar, DeWayne's, and Hinnant Vineyards.

115 US Hwy 70-A, Selma  
919-965-4000

wyndhamhotels.com/hotels/26253



### Econo Lodge

This 71-room property is located near Carolina Premium Outlets and JR Cigar.

1780 Outlet Center Dr., Selma  
919-965-3716

choicehotels.com/nc760



### Knights Inn

A 40-room exterior corridor property located close to JR Cigar and DeWayne's.

100 Graham St., Selma

919-202-0000

redlion.com/knights-inn/nc/selma/

knights-inn-selma



### La Quinta Inn & Suites by Wyndham

This 75-room hotel was renovated in 2021, is 100% smoke free and located next to Carolina Premium Outlets.

1695 Outlet Center Dr., Selma  
919-965-6730

wyndhamhotels.com



### Masters Inn

Conveniently located for travelers on I-95, this motel has exterior corridors and a courtyard pool.

318 US Hwy 70 E., Selma  
919-965-3771

mastersinn.net



### Quality Inn

This 80-room hotel is located near Carolina Premium Outlets and DeWayne's.

1705 Outlet Center Dr., Selma  
919-965-5200

qualityinn.com/nc145



### Royal Extended Stay Hotel

Offering everything you need to make you feel at home - kitchens, laundry, and more; this 42-room hotel is located near Carolina Premium Outlets and JR Cigar.

1780 Outlet Center Dr., Selma

919-965-3718



## SMITHFIELD

### Americas Best Value Inn

This 60-room motel offers ideal accommodations, affordable rates, and a friendly 24-hour staff.

197 Mallard Rd., Smithfield  
919-934-7176

redlion.com



### Baymont by Wyndham

Enjoy a home away from home at this 40-room hotel with prime access to area attractions and restaurants.

125 S. Equity Dr., Smithfield  
919-989-5901

wyndhamhotels.com/hotels/46941



### Becky's Log Cabin Motel

Becky's serves up the best that Johnston County has to offer with unique and restful lodging.

2491 US Hwy 70 Bus E., Smithfield  
919-934-1534

beckys-logcabin.com



### Best Western Smithfield Inn

This 100% smoke-free, 57-room hotel is located just minutes from key attractions and outlet shopping.

145 S. Equity Dr., Smithfield  
919-989-4047

bestwesternnorthcarolina.com/hotels/best-western-smithfield-inn



### Comfort Inn

This 72-room hotel offers easy access to many local attractions and points of interest.

170 S. Equity Dr., Smithfield  
919-912-5271

choicehotels.com/nc510



### Country Inn & Suites

Take an overnight break at this 77-room hotel with many attractions and restaurants close by.

250 N. Equity Dr., Smithfield  
919-934-3411

countryinns.com



### Fairfield Inn & Suites

This hotel is located next door to Carolina Premium Outlets, Outback Steakhouse, and Bob Evans. Complimentary hot breakfast is included!

809 Venture Dr., Smithfield  
919-938-0050

marriott.com/rdusf



### Hampton Inn

This 112-room hotel opened in 2020, with a modern design, digital key entry, indoor pool and is located near outlet shopping.

160 Towne Centre Place, Smithfield  
919-965-6151

hilton.com/en/hotels/rdusshx-hampton-smithfield-selma/



### Holiday Inn Express & Suite

This hotel provides affordable, comfortable, & friendly accommodations for both leisure & corporate travelers and outlet shoppers.

190 S. Equity Dr., Smithfield  
919-934-3350

hiexpress.com/smithfieldnc



### Sleep Inn & Suites

Experience simply stylish décor of Designed to Dream at our Gold Awarded Sleep Inn. You're invited to see why we're ranked "Top of the Brand!"

270 N. Equity Dr., Smithfield  
919-209-2360

choicehotels.com/nc466



### Super 8

Sample Southern hospitality at our conveniently located hotel offering handy amenities, including a microwave and refrigerator. Kitchenette suites are available for added comfort.

735 Outlet Center Dr., Smithfield  
919-989-8988

wyndhamhotels.com/hotels/10444



### Tru by Hilton

Less than a mile from Carolina Premium Outlets, a short walk from local and chain restaurants as well as a movie theater. 167 S. Equity Dr., Smithfield 919-934-9300 [hilton.com](http://hilton.com)



### Village Motor Lodge

This motel has 101 guest rooms on an expansive lawn facing I-95, and has welcomed travelers for over 60 years. 198 Mallard Rd., Smithfield 919-934-7126



## CAMPING AND RV

### Coopers RV Park

Convenient to Raleigh and Clayton with weekly & monthly rentals. 13528 US Hwy 70 Bus. E., Clayton 919-359-8060 [coopersrvparknc.com](http://coopersrvparknc.com)

### Four Oaks RV Resort

This RV Park is conveniently located off of I-95, Exit 90 with 38 full RV hook ups and 10 private tent sites. 4596 US Hwy 301 S., Four Oaks 919-963-6675 [fouroaksvresort.com](http://fouroaksvresort.com)

### Happy Trails Campground

This RV park is conveniently located off of I-95, Exit 90 with 21 RV hook ups. 406 US Hwy 701 S., Four Oaks 919-410-4124

### Hidden Haven RV Park

Johnston County's newest RV park tucked in a scenic forest setting. 30 W. Kegan Ln., Pine Level 919-965-3131 [hiddenhavenrvpark.com](http://hiddenhavenrvpark.com)

### Howell Woods Environmental Learning Center

Campsites and cabins available for rent. This "outdoor" classroom offers hiking, biking, horseback riding, hunting, fishing, and educational resources for the public's use. 6601 Devils Racetrack Rd., Four Oaks 919-938-0115 [johnstoncc.edu/howellwoods](http://johnstoncc.edu/howellwoods)

### North Pointe RV Resort

This campground has large, level pull-thru sites so no need to worry if you will fit. 428 Campground Rd., Selma 919-965-5923 [northpointervresort.com](http://northpointervresort.com)

### Raleigh Oaks RV Resort & Cottages

For families seeking a convenient "staycation" or for contractors. Ideal for short term, long term and short weekend stays. 527 US Hwy 701 S., Four Oaks 919-934-3181 [raleighoaksvresort.com](http://raleighoaksvresort.com)

### Tucker Lake

RV hook-up campground spaces available. 3025 Allen's Crossroads Rd., Benson 919-820-9173 [tuckerlake.com](http://tuckerlake.com)



LODGING OPTIONS

Unique

ANOTHER WAY TO ENJOY YOUR STAY IN JOCO!

New to the scene for the hospitality industry is AirBnB accommodations, and new to Johnston County are some unique guest experiences featuring local farms, horse barns, or historic homes. Search our towns for your next stay!

[AIRBNB.COM](http://AIRBNB.COM)

# BENTONVILLE BATTLEFIELD

## 160<sup>TH</sup> *Reenactment*

MARCH  
**15-16**  
2025

**“TERRIBLE STORM  
OF BULLETS”**

### BENTONVILLE BATTLEFIELD

The Bentonville Battlefield, 160th Anniversary Commemoration, is scheduled for March 15-16, 2025, with a host of events planned including free lectures, period music, encampments, and two battle reenactments, one on Saturday and one on Sunday. For more detailed information, visit [bentonvillereenactment.com](http://bentonvillereenactment.com).



### CLAYTON

Location, location, location is the key for choosing Clayton for getting outside on several outstanding trails, parks, and Clemmons State Forest for hiking and biking. One of the most popular trails is the annual Sculpture Trail that traverses downtown, where local shops, dining and nightlife are first rate.

It's always a sweet time to visit Clayton.

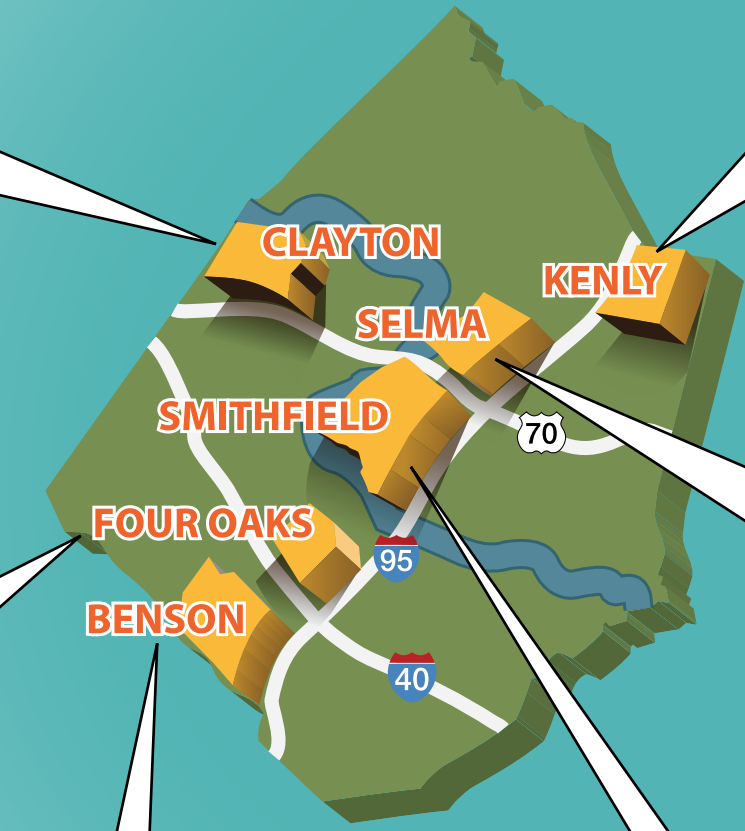
### FOUR OAKS

While in the area, the largest Civil War Battlefield in North Carolina, Bentonville, is just 15 minutes from Exit 90, on I-95. The site offers museum exhibits, driving and walking trails, and the Harper House, a field hospital for the Union Troops during the three-day battle. And close by is Howell Woods, offering outdoor recreation activities on over 2,800 acres for hiking, biking, and birdwatching.



Don't drive by the charming town of Four Oaks - stop and explore unique shops, dining, and special events.





**KENLY**

Widely known around here as Friendly Kenly – stop at one of the town's three exits, 107, 106, or 105, for a place to stay, shop, or get a bite to eat. While in Kenly explore our local farming heritage at the Tobacco Farm Life Museum's 6,000 square foot exhibit gallery, the Iredell-Brown homestead, the restored tobacco barn, pack-house, and schoolhouse all showcasing how families lived, worked, farmed, and worshiped in the early 1900s.



**SELMA**

Discover the unique shops and antique stores in downtown Selma, and if you have a sweet tooth, drop by the Old Fashioned Ice Cream Shop -- it's all homemade!



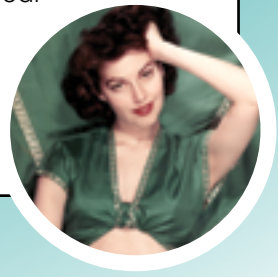
Visitors will discover several murals around town, like the ones at Coffee on Raiford or the new five-panel "Celebrating Love" mural on the side of Treasury Antiques. For visitors looking for music and entertainment venues, Live@The Rudy Theater has four themed shows during the year.

Be sure to include some shopping at DeWayne's, find great deals at Carolina Apparel, and dine at the new Old North State Food Hall.

**SMITHFIELD**

Create your own unique weekend experience in Smithfield, including outlet shopping at Carolina Premium Outlets for incredible savings! Head downtown to tour the Ava Gardner Museum, take a stroll along the Buffalo Creek Greenway, and shop local boutiques. After a full day, take in a movie at the historic Howell Theater or Smithfield Cinemas near your hotel.

While exploring Smithfield, check out the events calendar for music, art, food festivals and other fun activities.



**BENSON**

Let the warmth and charm of Benson welcome you as you explore the Benson Museum of Local History, area parks like the Singing Grove Park, and a thriving downtown merchant community.

Create a unique weekend experience staying at the dog-friendly Hampton Inn, located adjacent to the Benson Dog Park where your pups can run off-leash. Treat yourself to three stops on the Beer, Wine and Shine trail, Broadslab Distillery, Gregory Winery, and Fainting Goat Brewery. Also enjoy shopping in boutiques, antique stores, and dine on the tasty waffles at Cornerstone Cafe.

