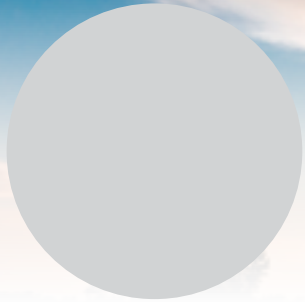


# HELPING YOU GET TOGETHER



Conf. Center



Hotel



Restaurant



Wedding



Unique

CHOOSE YOUR VENUE TYPE



VIEW A FEATURED VENUE



The Barn at  
Broadslab



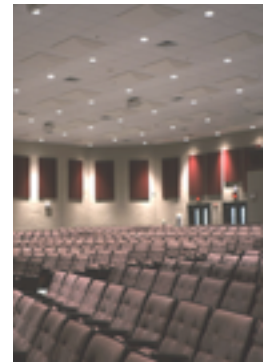
The Clayton  
Center



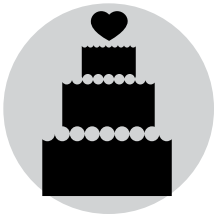
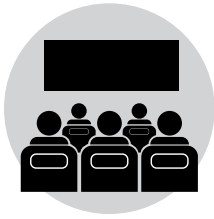
The Farm  
at 95



The Farm  
at 42



Paul A. Johnston  
Auditorium



# The Barn at Broadslab

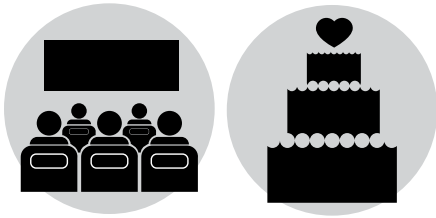
The Barn at Broadslab is a uniquely-Southern, rustic, yet elegant venue located in a wooded, tranquil setting alongside Broadslab Distillery.

Located in rural Johnston County, The Barn at Broadslab has the space you need for your wedding or special event. Climate-controlled for use during any time of the year, The Barn at Broadslab is a captivatingly beautiful setting that is perfect for creating memorable experiences.

## SEATING ARRANGEMENTS

THE BARN AT BROADSLAB	TOTAL SQ.FT	THEATER	CLASSROOM	BANQUET	RECEPTION
The Barn at Broadslab	8000	500	-	300	300





# The Clayton Center

The Clayton Center features more than 12,000 square feet of multifunction event space.

The open gallery of the Main Lobby and Terraces provides a timeless and elegant backdrop for weddings, as well as corporate and community events. The council chambers and classrooms offer the perfect location for everything from business and civic meetings to church services and birthday parties.

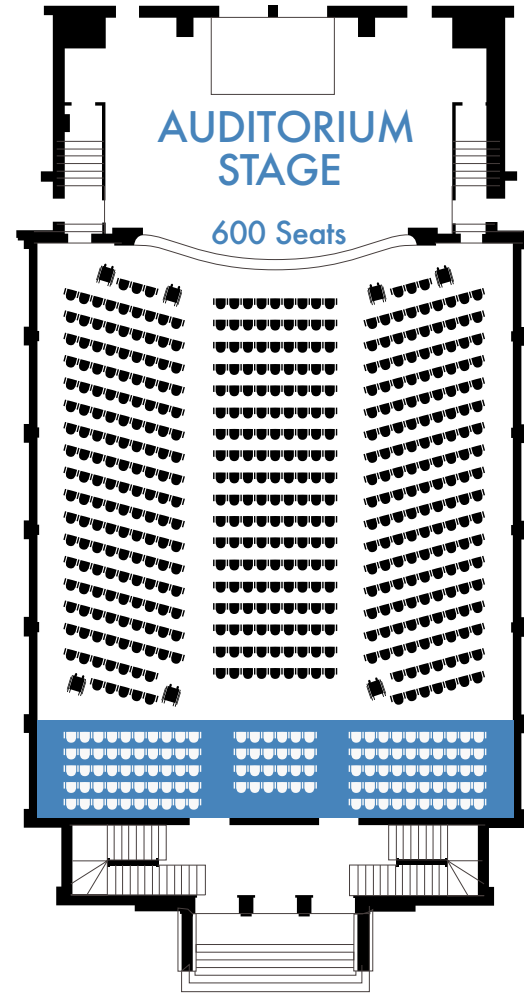
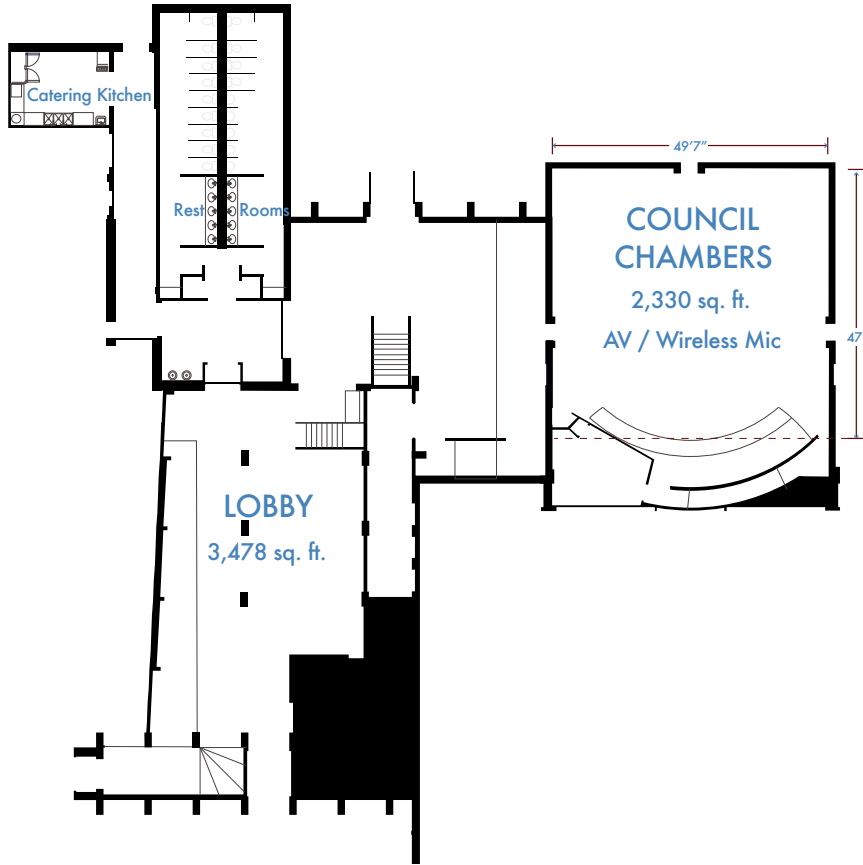
## SEATING ARRANGEMENTS

CLAYTON CENTER VENUES	TOTAL SQ.FT	THEATER	CLASSROOM	BANQUET	RECEPTION
Auditorium	-	607	-	-	-
Lobby Gallery	3478	-	-	210	350
Council Chambers	2330	200	90	130	150
BB&T Room	1200	100	70	80	75
Rotary Room	1200	100	70	80	75
Four Oaks Room	600	50	35	40	40
Hales Room	600	50	35	40	40
Pooler Room	600	50	35	40	40
York Room	600	50	35	40	40

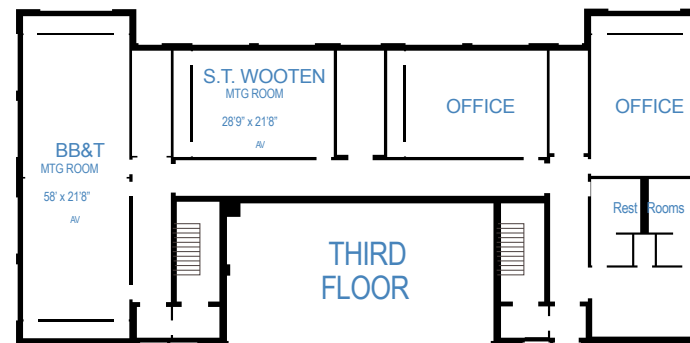


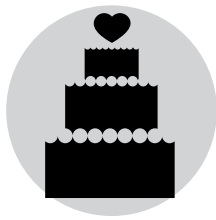
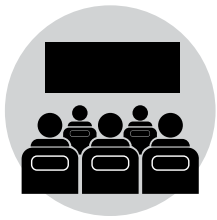


# The Clayton Center



home previous next





# The Farm at 95

Surrounded by acres of Eastern North Carolina farmland, an event here is sure to have that rustic, country charm you will love.

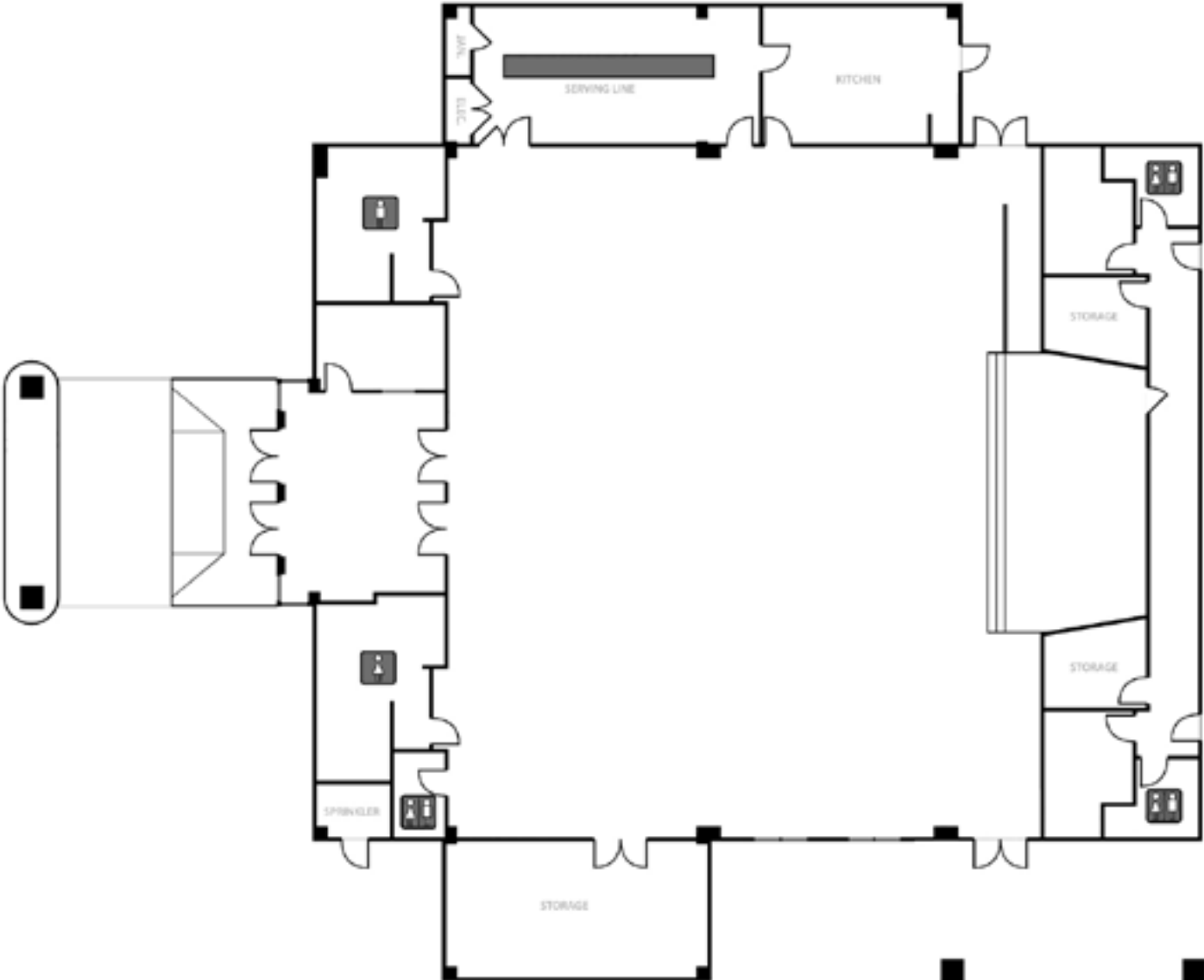
With a banquet hall that will hold more than 400 people, including tables and chairs, and an outdoor concert venue, this state-of-the-art facility is perfect for wedding receptions, business meetings, banquets, reunions, parties or any other gathering you are planning.

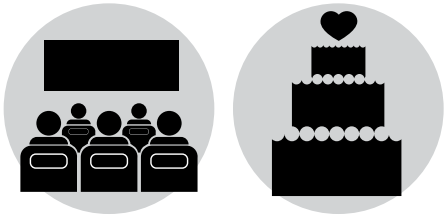
## SEATING ARRANGEMENTS

THE FARM AT 95	TOTAL SQ.FT	THEATER	CLASSROOM	BANQUET	RECEPTION
	5000	700	240	432	432



# The Farm at 95





# The Farm at 42

**With two separate banquet halls, The Farm at 42 has the versatility to accommodate almost any event - tables and chairs included!**

The Oak Room is the larger of the two banquet halls, with a seating capacity of over 400 people and a connected private patio. The Maple Room is a smaller banquet hall, able to accommodate up to 100 guests. Overlooking the private pond on the property, the patio is a picturesque back-drop for a post-meeting reception.

This state of the art facility is the perfect place for your next wedding ceremony, reception, birthday party, bridal shower, corporate event, reunion or any other gathering you are planning.

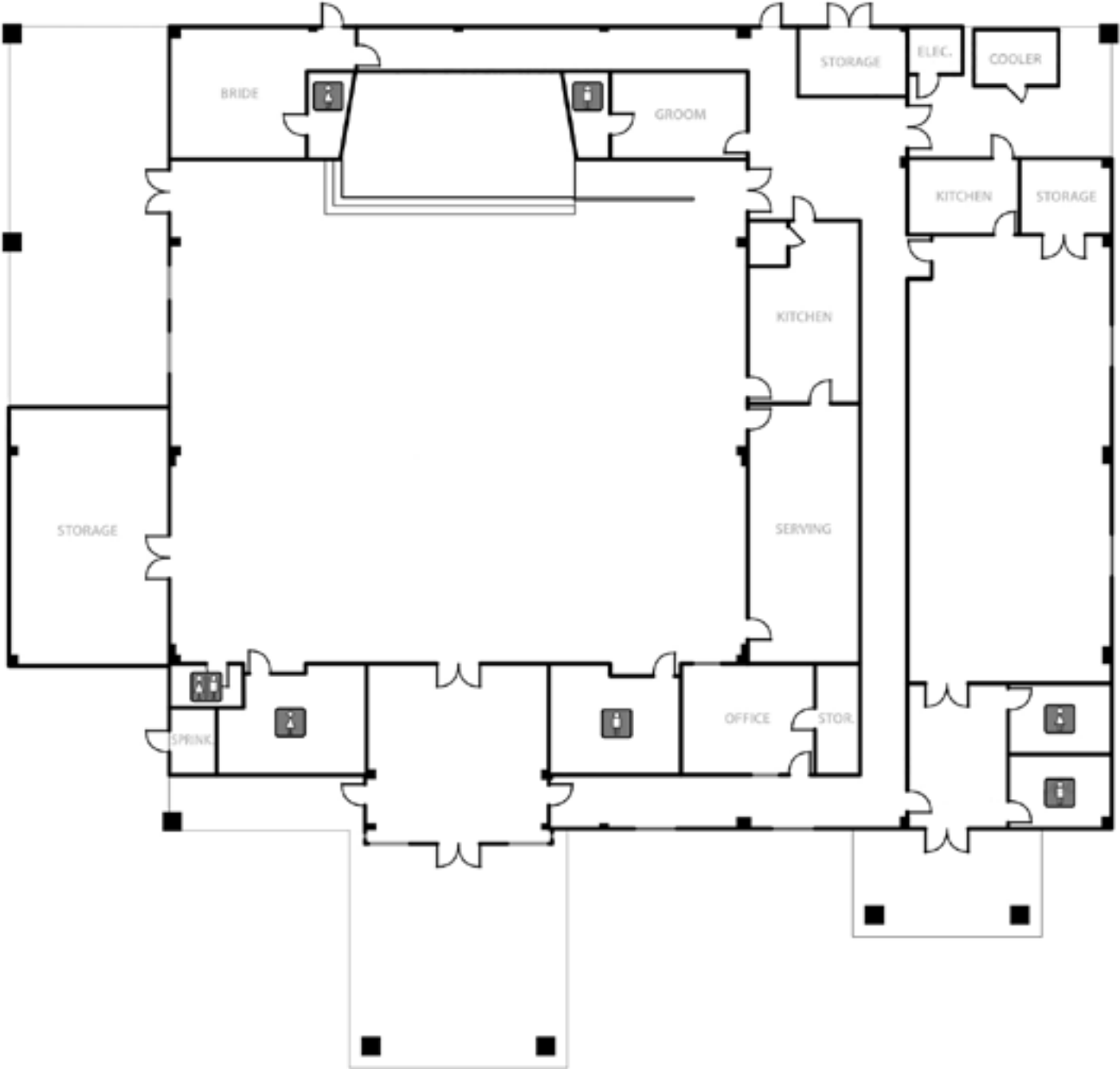
SEATING ARRANGEMENTS

THE FARM AT 42	TOTAL SQ.FT	THEATER	CLASSROOM	BANQUET	RECEPTION
Oak Room	5000	683	240	432	432
Maple Room	1750	150	75	85	85

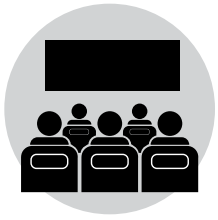




# The Farm at 42







# Paul A. Johnston Auditorium

An intimate 1,007 seat facility conveniently located on the main campus of Johnston Community College at Exit 95 on I-95.

In addition to the auditorium there is additional space for events in the Grand Hall. The facility is available for meetings and private events, and the Community College offers ample, free on-site parking.

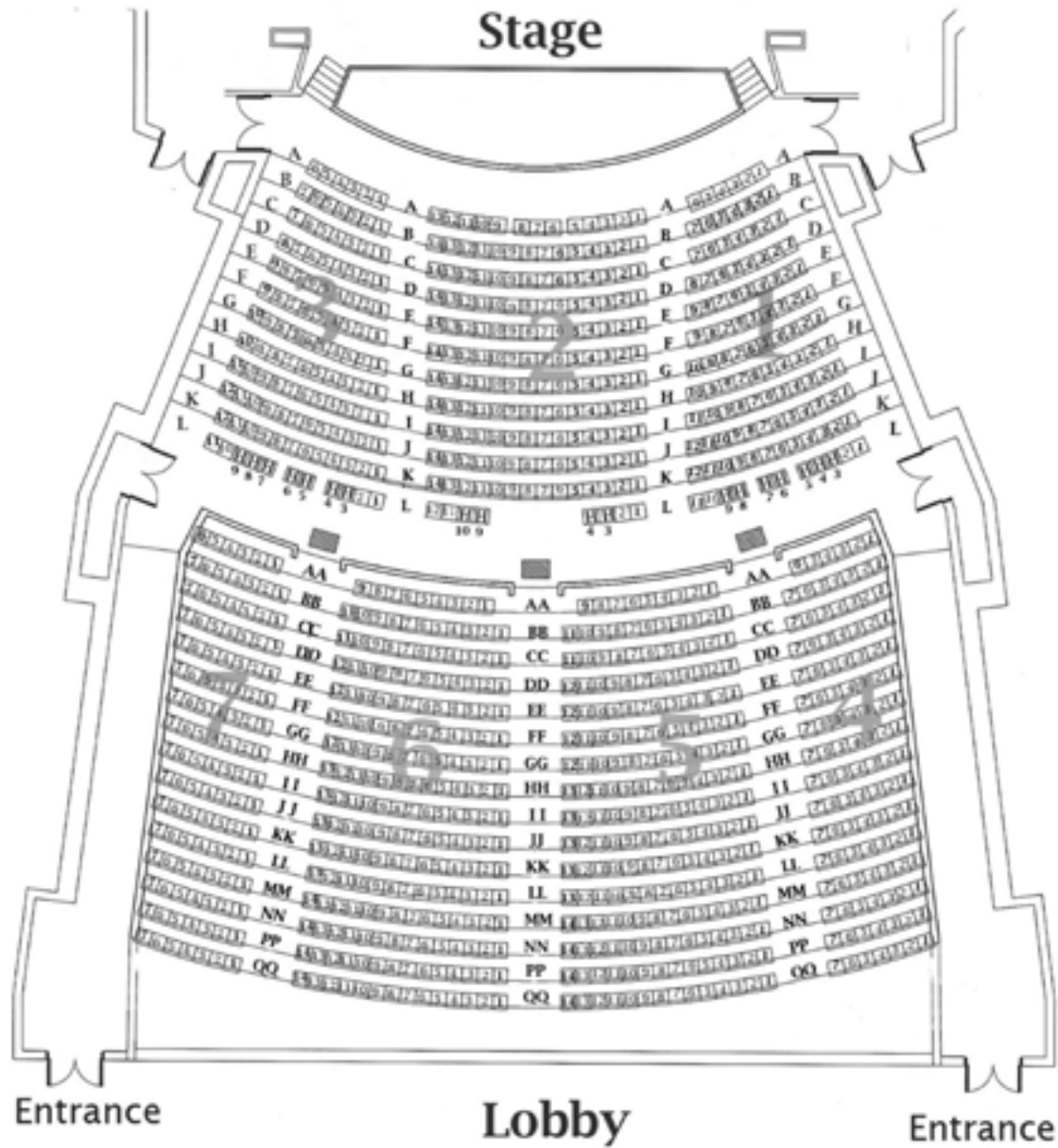
## SEATING ARRANGEMENTS

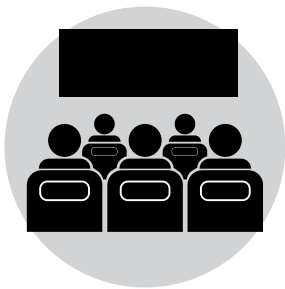
PAUL A. JOHNSTON AUDITORIUM	TOTAL SQ.FT	THEATER	CLASSROOM	BANQUET	RECEPTION
Multipurpose Room	2000	150	150	-	-
Auditorium/Great Hall	4800	1007	-	325	400



# Paul A. Johnston Auditorium

[home](#) [previous](#) [next](#)



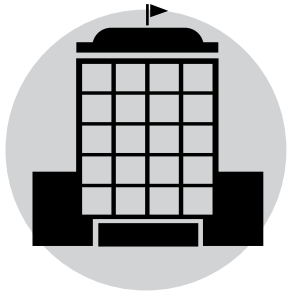


# Conference Centers & More

## SEATING ARRANGEMENTS

VENUE	TOTAL SQ.FT	THEATER	CLASSROOM	BANQUET	RECEPTION	ADDRESS	PHONE	WEB
Benson Civic Center						1204 N. Johnson St., Benson	(919) 894-5117	<a href="http://townofbenson.com/2185/Benson-Civic-Center">townofbenson.com/2185/Benson-Civic-Center</a>
Meeting Room A	960	-	40	-	-			
Meeting Room B	200	-	40	-	-			
Multipurpose Room	3000	-	-	125	125			
Camp Mary Atkinson/ Girl Scout Leadership Center	16000	200	150	200	200	8591 NC 42 E., Selma	(800) 284-4475	<a href="http://nccoastalpines.org/en/camp/rent-our-facilities.html">nccoastalpines.org/en/camp/rent-our-facilities.html</a>
Johnston County Agricultural Center	4900	446	-	325	-	2736 NC Hwy 210, Smithfield	(919) 989-5380	<a href="http://johnston.ces.ncsu.edu">johnston.ces.ncsu.edu</a>
Paul A. Johnston Auditorium						245 College Rd., Smithfield	(919) 209-2099	<a href="http://johnstoncc.edu/foundation/event/performingarts.aspx">johnstoncc.edu/foundation/event/performingarts.aspx</a>
Multipurpose Room	2000	150	150	-	-			
Great Hall/Auditorium	4800	1007	-	325	400			
Selma Civic Center						300 N. Webb St., Selma	(919) 975-1411	<a href="http://selma-nc.com/departments/parks-rec/selma-civic-center/">selma-nc.com/departments/parks-rec/selma-civic-center/</a>
Legacy Room	4748	299	240	240	299			
Oak Room	500	24	25	25	25			
Smithfield Recreation and Aquatics Center						600 M. Durwood Stephenson Pkwy., Smithfield	(919) 934-1408	<a href="http://sraonline.com">sraonline.com</a>
Banquet Room	2214	-	72	125	125			
Multipurpose Room	1666	-	30	30	30			
The Barn at Broadslab	8000	500	-	300	300	4676 NC Hwy 50 S., Benson	(919) 868-6662	<a href="http://broadslabdistillery.com/The-Barn-at-Broadslab">broadslabdistillery.com/The-Barn-at-Broadslab</a>
The Clayton Center						111 E. Second St., Clayton	(919) 553-3152	<a href="http://theclaytoncenter.com">theclaytoncenter.com</a>
Auditorium	-	607	-	-	-			
Lobby Gallery	3478	-	-	210	350			
Council Chambers	2330	200	90	130	150			
BB&T Room	1200	100	70	80	75			
Rotary Room	1200	100	70	80	75			
Four Oaks Room	600	50	35	40	40			
Hales Room	600	50	35	40	40			
Poole Room	600	50	35	40	40			
York Room	600	50	35	40	40			
The Farm at 42						1075 Lynch Rd., Selma	(919) 750-5464	<a href="http://thefarmnc.com">thefarmnc.com</a>
Oak Room	5000	700	240	432	432			
Maple Room	1750	150	75	85	85			
The Farm at 95	5000	700	240	432	432	215 Batten Rd., Selma	(919) 750-5464	<a href="http://thefarmnc.com">thefarmnc.com</a>





# Hotels with Meeting Rooms

## SEATING ARRANGEMENTS

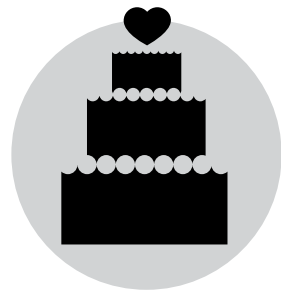
VENUE	TOTAL SQ.FT	THEATER	CLASSROOM	BANQUET	RECEPTION	ADDRESS	PHONE	WEB
Comfort Inn	500	53	34	40	-	126 Cleveland Crossing Dr., Garner	(919) 773-1110	<a href="http://choicehotels.com/nc366">choicehotels.com/nc366</a>
Comfort Inn	676	50	50	-	-	170 S. Equity Dr., Smithfield	(919) 938-4444	<a href="http://choicehotels.com/nc510">choicehotels.com/nc510</a>
Comfort Suites	720	30	30	25	30	761 Enterprise Dr., Clayton	(919) 553-1234	<a href="http://choicehotels.com/nc302">choicehotels.com/nc302</a>
Country Inn & Suites	937	60	30	30	30	250 N. Equity Dr., Smithfield	(919) 934-3411	<a href="http://countryinns.com/smithfieldnc">countryinns.com/smithfieldnc</a>
Fairfield Inn & Suites	416	30	16	18	30	809 Venture Dr., Smithfield	(919) 938-0050	<a href="http://marriott.com/rdusf">marriott.com/rdusf</a>
Hampton Inn						100 Water Place Landing, Benson	(919) 701-8000	<a href="http://hamptoninn.com">hamptoninn.com</a>
Cowling Room	1050	80	60	80	80			
Board Room	450	-	10	-	-			
Hampton Inn	600	50	20	20	20	100 Hampton Dr., Garner	(919) 773-1977	<a href="http://hamptoninn.com">hamptoninn.com</a>
Hampton Inn	729	41	41	41	41	160 Towne Centre Pl., Smithfield	(919) 965-6151	<a href="http://hamptoninn.com">hamptoninn.com</a>
Holiday Inn Express	575	35	25	-	-	105 Leone Ct., Garner	(919) 719-3415	<a href="http://hiexpress.com/claytonnc">hiexpress.com/claytonnc</a>
Holiday Inn Express & Suites	1365	80	45	80	80	190 S. Equity Dr., Smithfield	(919) 934-3350	<a href="http://hiexpress.com/smithfieldnc">hiexpress.com/smithfieldnc</a>
La Quinta	225	25	25	-	25	1695 Outlet Center Dr., Selma	(919) 965-6730	<a href="http://LaQuinta.com">LaQuinta.com</a>
Sleep Inn	800	84	55	67	67	105 Commerce Pkwy., Garner	(919) 772-7771	<a href="http://choicehotels.com/nc321">choicehotels.com/nc321</a>
Sleep Inn & Suites	1012	107	70	-	-	270 N. Equity Dr., Smithfield	(919) 209-2360	<a href="http://choicehotels.com/nc466">choicehotels.com/nc466</a>
Smithfield Room	506	53	35	-	-			
Selma Room	506	53	35	-	-			



# Restaurants with Private Rooms

## SEATING ARRANGEMENTS

VENUE	TOTAL SQ.FT	THEATER	CLASSROOM	BANQUET	RECEPTION	ADDRESS	PHONE	WEB
Clayton Steakhouse	-	-	-	30	-	307 E. Main St., Clayton	(919) 553-2299	<a href="http://theclaytonsteakhouse.com">theclaytonsteakhouse.com</a>
Golden Corral						100 Towne Centre Pl., Smithfield	(919) 989-1125	<a href="http://goldencorral.com">goldencorral.com</a>
Room 1	-	-	-	66	-			
Room 2	-	-	-	36	-			
Kobe Japanese Steakhouse	-	-	-	25	-	101 Venture Dr., Smithfield	(919) 938-3200	<a href="http://kobesmithfield.com">kobesmithfield.com</a>
Lane's Seafood & Steak House	1000	-	-	45	-	275 Bowling Spring Dr., Angier	(919) 894-7700	<a href="http://gregoryvineyards.com">gregoryvineyards.com</a>
Lowell Mill Restaurant	-	-	-	25	-	595 Bagley Rd., Kenly	(919) 284-4046	
Manning's Restaurant						406 E. Main St., Clayton	(919) 585-7005	<a href="http://manningsonmain.com">manningsonmain.com</a>
Roof Top Lounge	-	-	-	50	-			
Cocktail Lounge	-	-	-	40	-			
Banquet Room	-	-	-	20	-			
Mayflower Seafood Restaurant	-	-	-	40	-	1625 W. Market St., Smithfield	(919) 989-1156	<a href="http://mayflowerseafoodrestaurant.com">mayflowerseafoodrestaurant.com</a>
Meadow Village Restaurant	-	-	-	20	-	7400 NC Hwy 50 S., Benson	(919) 894-5430	<a href="http://meadowrestaurant.biz">meadowrestaurant.biz</a>
Parkside Café	-	-	-	50	-	2176-A US Hwy 70-A, Pine Level	(919) 965-4100	<a href="http://parksidecafenc.com">parksidecafenc.com</a>
Robbins Nest	-	-	-	120	-	121 US Hwy 70-A, Selma	(919) 965-5522	<a href="http://robbinsnestrestaurant.com">robbinsnestrestaurant.com</a>
Serving Spoon @ 119	2500	-	-	68	-	119 W. Pine St., Pine Level	(919) 351-4055	<a href="http://servingspooncatering.com">servingspooncatering.com</a>
SoDoSoPa	-	-	-	24	-	146 S. Third St., Smithfield	(919) 205-1076	<a href="http://sodosopa.biz">sodosopa.biz</a>
Texas Steakhouse & Saloon	-	-	-	35	-	235 Outlet Center Dr., Smithfield	(919) 938-3221	<a href="http://texassteakhouse.com">texassteakhouse.com</a>
Ugly Mug Bean & Brew	-	-	-	12	-	51-E Technology Dr., Garner	(919) 916-5277	<a href="http://umcoffee.com">umcoffee.com</a>
Under the Oak Restaurant and Catering	-	-	-	48	-	135 S. Third St., Smithfield	(919) 205-1098	<a href="http://undertheoakfarm.com">undertheoakfarm.com</a>



# Wedding Venues

## SEATING ARRANGEMENTS

VENUE	TOTAL SQ.FT	THEATER	CLASSROOM	BANQUET	RECEPTION	ADDRESS	PHONE	WEB
Brick & Mortar Events	3000	-	175	175	175	217 E. Main St., Clayton	(919) 616-8995	<a href="http://brickandmortareventsnc.com">brickandmortareventsnc.com</a>
Country Club of Johnston County	2000	175	90	175	200	694 Country Club Rd., Smithfield	(919) 934-4166	<a href="http://ccjohnstoncounty.com">ccjohnstoncounty.com</a>
Gateway Event Center	-	200	100	165	180	501 Yates Dr., Clayton	(919) 333-1988	<a href="http://gatewayconferenceandeventcenter.info">gatewayconferenceandeventcenter.info</a>
Gregory Vineyards	4000	200	150	150	200	275 Bowling Spring Dr., Angier	(919) 894-7700	<a href="http://gregoryvineyards.com">gregoryvineyards.com</a>
Monti Hall	2000	-	160	100	180	9963 US Hwy 70 Bus. W., Clayton	(919) 553-0761	<a href="http://venerospizzeria.com/monti-hall-catering">venerospizzeria.com/monti-hall-catering</a>
Selma Civic Center						300 N. Webb St., Selma	(919) 975-1411	<a href="http://selma-nc.com/departments/parks-rec/selma-civic-center/">selma-nc.com/departments/parks-rec/selma-civic-center/</a>
Legacy Room	4748	299	240	240	299			
Oak Room	500	24	25	25	25			
Southern Charm Wedding	2400	-	-	150	150	8514 Brogden Rd., Smithfield	(919) 934-5115	<a href="http://southerncharmwedding.com">southerncharmwedding.com</a>
Southern Grace Farms	2500	150	-	135	135	465 Clayton Rd., Angier	(919)264-7708	<a href="http://southerngracefarmsnc.com">southerngracefarmsnc.com</a>
The Barn @ Camp Nellie	3228	100	-	140	140	4945 Antioch Church Rd., Middlesex	(919) 202-1991	<a href="http://www.thebarn-campnellie.com/">www.thebarn-campnellie.com/</a>
The Barn at Broadslab	8000	500	-	300	300	4676 NC Hwy 50 S., Benson	(919) 868-6662	<a href="http://broadslabdistillery.com/The-Barn-at-Broadslab">broadslabdistillery.com/The-Barn-at-Broadslab</a>
The Clayton Center	4000	607	90	210	350	111 E. Second St., Clayton	(919) 553-3152	<a href="http://theclaytoncenter.com">theclaytoncenter.com</a>
The Farm at 42						1075 Lynch Rd., Selma	(919) 750-5464	<a href="http://thefarmnc.com">thefarmnc.com</a>
Oak Room	5000	700	240	432	432			
Maple Room	1750	150	75	85	85			
The Farm at 95	5000	700	240	432	432	215 Batten Rd., Selma	(919) 750-5464	<a href="http://thefarmnc.com">thefarmnc.com</a>
The Paisley Barn	-	200	-	200	200	7585 Old Fairground Rd., Benson	(919) 656-1349	<a href="http://thepaisleybarn.com">thepaisleybarn.com</a>
The Pond at Lazy O Farm						403 Old Olive Rd., Smithfield	(919) 934-1132	<a href="http://thepondatlazyofarm.com">thepondatlazyofarm.com</a>
Big Barn	2250	-	-	-	160			
Little Barn Room 1	980	-	-	-	75			
Little Barn Room 2	440	-	-	-	32			
Cottage Sunroom	240	-	-	-	16			
The Wedding Place NC LLC	-	-	-	90	90	6026 Little Creek Church Rd., Clayton	(919) 553-7424	<a href="http://theweddingplacenc.com">theweddingplacenc.com</a>
The Woman's Club of Clayton	1100	20	40	40	60	109 Church St., Clayton	(949) 372-9894	<a href="http://twccnc.org">twccnc.org</a>
Twin Oaks Barn	7000					6644 Cornwallis Rd., Garner	(919) 628-8508	<a href="http://twinoaksbarn.com">twinoaksbarn.com</a>
Main Hall	4200	200	175		175			
Water's Edge at Tart Farms						2725 Benson Hardee Rd., Benson	(919) 422-9920	<a href="http://watersedgeattartfarms.com">watersedgeattartfarms.com</a>
Ceremony building	3500	200	-	-	-			
Reception building	3900	-	-	200	200			





# Additional Unique Venues

## SEATING ARRANGEMENTS

VENUE	TOTAL SQ.FT	THEATER	CLASSROOM	BANQUET	RECEPTION	ADDRESS	PHONE	WEB
Ava Gardner Museum	2500	50	35	35	35	325 E. Market St., Smithfield	(919) 934-5830	<a href="http://johnstoncountync.org/ava-gardner">johnstoncountync.org/ava-gardner</a>
Artnosphere Community Arts Center					50	3919 Raleigh Rd., Clayton	(919) 938-8015	<a href="http://artmospherecac.com">artmospherecac.com</a>
Classroom #1	323	-	25	-	-			
Classroom #2	221	-	12	-	-			
Outdoors	-	-	-	100	100			
Benson Chamber Park & Arena	outdoor	1000	-	1000	1000	355 J. Lee Rd., Benson	(919) 894-3825	<a href="http://benson-chamber.com">benson-chamber.com</a>
Benson Singing Grove	outdoor	-	-	750	750	400 E. Main St., Benson	(919) 894-5117	<a href="http://townofbenson.com">townofbenson.com</a>
Bentonville Battlefield State Historic Site	outdoor	-	-	150	150	5466 Harper House Rd., Four Oaks	(910) 594-0789	<a href="http://historicsites.nc.gov/bentonville">historicsites.nc.gov/bentonville</a>
Camp Mary Atkinson/Girl Scout Leadership Center	16000	200	150	200	200	8591 NC 42 E., Selma	(800) 284-4475	<a href="http://nccoastalpin.es.org/en/camp/rent-our-facilities.html">nccoastalpin.es.org/en/camp/rent-our-facilities.html</a>
Clemmons Educational State Forest	outdoor	-	100	100	100	2256 Old US 70 W., Clayton	(919) 553-5651	<a href="http://ncesf.org/clemmons.html">ncesf.org/clemmons.html</a>
Double Barley Brewing	-	-	-	30	40	3174 Hwy 70 W., Smithfield	(919) 934-3433	<a href="http://doublebarleybrewing.com">doublebarleybrewing.com</a>
Frank Creech Art Gallery	750	-	-	-	50	245 College Rd., Smithfield	(919) 209-2112	<a href="http://johnstoncc.edu/frank-creech-art-gallery">johnstoncc.edu/frank-creech-art-gallery</a>
Laurie Orr Peters Reception Area	outdoor	-	-	-	75			
Howell Woods Environmental Learning Center	900	50	40	50	50	6601 Devils Racetrack Rd., Four Oaks	(919) 938-0115	<a href="http://johnstoncc.edu/howellwoods">johnstoncc.edu/howellwoods</a>
Public Library of Johnston County and Smithfield	1472	194	90	90	194	305 E. Market St., Smithfield	(919) 934-8146	<a href="http://pljcs.org">pljcs.org</a>
Selma Lion's Club	-	-	30	75	100	203 W. Oak St., Selma	(919) 291-1428	
The Woman's Club of Clayton	1100	20	40	40	60	109 Church St., Clayton	(949) 372-9894	<a href="http://twccnc.org">twccnc.org</a>
Tobacco Farm Life Museum						709 N. Church St., Kenly	(919) 284-3431	<a href="http://tobaccofarmlifemuseum.org">tobaccofarmlifemuseum.org</a>
Lobby	775	40	30	40	50			
Packhouse	437	30	20	30	40			
Triangle East Chamber of Commerce						1115 Outlet Center Dr., Smithfield	(919) 934-9166	<a href="http://triangleeastchamber.com">triangleeastchamber.com</a>
Fleming Conference Room	630	40	40	20	20			
First Citizens Bank Conference Room			12					
Stancil Oil Collaboration Room			10					