

LAUREL HIGHLANDS OF PENNSYLVANIA

LAURELHIGHLANDS.ORG

*How
Adventurous
Are You?*

Take the quiz and find out

*Cross-Country
Ski Map*

Find the best location for you

*2020 Festival
Guide*


Laurel Highlands
P E N N S Y L V A N I A

113 E. Main Street | Ligonier, PA 15658
laurelhighlands.org | 724.238.5661



LAUREL HIGHLANDS OF PENNSYLVANIA

LAURELHIGHLANDS.ORG

*How
Adventurous
Are You?*

Take the quiz and find out

*Cross-Country
Ski Map*

Find the best location for you

*2020 Festival
Guide*


Laurel Highlands
P E N N S Y L V A N I A

www.laurelhighlands.org



4
SEASONS



1
RESORT

PENNSYLVANIA'S
★ **OUTDOOR ADVENTURE HQ** ★
— YOUR HEADQUARTERS FOR OUTDOOR FUN —



7SPRINGS.COM

800-452-2223

VISIT HIDDENVALLEYRESORT.COM AND LAURELMOUNTAINSKI.COM TO LEARN MORE ABOUT OUR SEVEN SPRINGS FAMILY OF RESORTS.



Find Yourself

IN PENNSYLVANIA'S LAUREL HIGHLANDS

From rolling hills and Pennsylvania's highest point to vibrant fall foliage and many remarkable landmarks, the Laurel Highlands is the ideal place to get away, enjoy the great outdoors, and find your adventure.

Immerse yourself in the region's art and culture or step into the past at historic sites. Beautiful scenery provides a picturesque backdrop for attractions such as Frank Lloyd Wright's Fallingwater, charming covered bridges, and quaint towns.

LEARN MORE For lodging packages, coupons, blogs, an events calendar, and more, visit laurelhighlands.org



ADVENTURE AWAITS

LAURELHIGHLANDS.ORG





FIND YOUR FUN SIDE!

Whether you like to bike, zip line, ski, rock climb, or hike with your furry friend, the Laurel Highlands has it all.

laurelhighlands.org/outdoors



CONNECT WITH US!

-  LAUREL HIGHLANDS VISITORS BUREAU
-  @LAURELHIGHLANDS
-  @LAURELHIGHLANDS_PA
-  LAUREL HIGHLANDS

Closer
THAN YOU THINK!



Distance from major cities to the closest point of entry to the Laurel Highlands region when traveling on major routes.

BALTIMORE, MD 2.5 hours 160 miles	DETROIT, MI 4.5 hours 296 miles	PHILADELPHIA, PA 4 hours 222 miles
BUFFALO, NY 3.5 hours 230 miles	ERIE, PA 2.5 hours 141 miles	PITTSBURGH, PA .5 hours 18 miles
CINCINNATI, OH 4.5 hours 268 miles	HARRISBURG, PA 2 hours 120 miles	RICHMOND, VA 4 hours 234 miles
CLEVELAND, OH 2.5 hours 146 miles	MORGANTOWN, WV .5 hours 10 miles	WASHINGTON, D.C. 3 hours 158 miles
COLUMBUS, OH 3 hours 182 miles	NEW YORK CITY, NY 5 hours 289 miles	WHEELING, WV 1 hour 57 miles

ARNOLD PALMER REGIONAL AIRPORT

As the largest airport in the Laurel Highlands, Arnold Palmer Regional Airport, located in Latrobe, provides a convenient travel option for visitors looking to explore the region with direct flights to and from Pittsburgh, Florida, and South Carolina.

FROM NORTH TO SOUTH

Via I-79, U.S. 119, and U.S. 219.

FROM EAST TO WEST

Via highways I-70, U.S. 22, U.S. 30, U.S. 40, Pennsylvania Route 31, and the Laurel Highlands Scenic Byway (Routes 381/711).

PENNSYLVANIA TURNPIKE

(I-76/I-70) Exits include #67 Irwin, #75 New Stanton, #91 Donegal, and #110 Somerset.



laurelhighlands.org | 724.238.5661

Administrative Offices
Laurel Highlands Visitors Bureau
113 E. Main Street | Ligonier, PA 15658

Copyright 2020 by the Laurel Highlands Visitors Bureau®. The Laurel Highlands Visitors Bureau® has made every effort to maintain the accuracy of information presented in this guide, but assumes no responsibility for errors, changes or omissions. The Laurel Highlands Visitors Bureau® in no way warrants or assumes liability for the products and services offered. Inclusion in this publication does not imply endorsement by the Laurel Highlands Visitors Bureau®.

Design by: A to Z Communications, Inc. | atozcommunications.com

TABLE OF CONTENTS

LAURELHIGHLANDS.ORG

LOOK
INSIDE

8



14



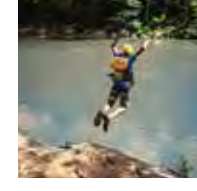
18



28



34



Features

- 4** Our Three Counties
- 6** Fall in the Laurel Highlands
- 8** Weddings
- 10** Camping
- 11** Flight 93 National Memorial
- 12** Washington's Journey
- 14** Laurel Highlands Pour Tour
- 16** Your Guide to Laurel Hill State Park
- 18** Historic Hanna's Town
- 20** Frank Lloyd Wright
- 22** Adventure Quiz
- 24** The Historic Stone House Restaurant
- 26** Sand Hill Berries
- 28** Festivals and Events
- 30** Summer Camps
- 32** A Blizzard of Winter Fun
- 34** Try a New Extreme Sport

Sections

- 35** 2020 Events
- 39** Coupons
- 43** Photo Contest Winners
- 58** Listings

On the Cover

Frank Lloyd Wright's Fallingwater

Photo By: Christopher Little, courtesy of the Western Pennsylvania Conservancy

On the Back Cover

Courtesy of Seven Springs Mountain Resort

OUR 3 COUNTIES

LAURELHIGHLANDS.ORG/COUNTIES

Find out more about our three counties and discover fun things to do, great places to eat, and amazing places to stay!

KEY TO
LISTINGS

WC Westmoreland County
FC Fayette County
SC Somerset County



AS YOU BROWSE through this guide, you will see symbols indicating which of the region's three counties you can find an attraction in.

Fayette

Don't just play here. Stay here.
Visit fayettedcountypa.org for more info.

MOST RECOGNIZABLE

Fallingwater
Ohiopyle State Park
Nemacolin Woodlands
Resort

HIDDEN GEMS

Friendship Hill National
Historic Site
Touchstone Center
for the Arts
Laurel Caverns

FLAVORS TO SAVOR

Christian W. Klay Winery
Bittersweet Café
Caporella's Italian
Ristorante

Population: 131,504
Founded in 1783
Area 798 square miles



Somerset

If you lived here, you'd be home already.
Visit www.co.somerset.pa.us for details.

MOST RECOGNIZABLE

Flight 93 National
Memorial
Seven Springs
Mountain Resort
Mountain Playhouse

HIDDEN GEMS

10 Covered Bridges
Quemahoning Trail
Rockwood Mill Shoppes
and Opera House

FLAVORS TO SAVOR

Brantview Farms Maple
Whitehorse Brewing
Tall Pines Distillery

Population: 74,501
Founded in 1795
Area 1,074 square miles



Westmoreland

A great place to raise a family and grow a business.
Visit co.westmoreland.pa.us for details.

MOST RECOGNIZABLE

Idlewild and SoakZone
Westmoreland Museum
of American Art
Polymath Park

HIDDEN GEMS

Lincoln Highway
Experience
Historic Hanna's Town
Compass Inn Museum

FLAVORS TO SAVOR

Schramm Farms and
Orchards
Laurel Highlands Meadery
Out of the Fire Café

Population: 352,627
Founded in 1773
Area 1,036 square miles



FALL BRINGS COLOR

TO THE LAUREL HIGHLANDS

Fall is Glorious IN THE LAUREL HIGHLANDS

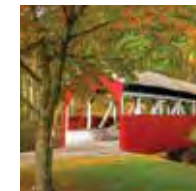
While Pennsylvania's Laurel Highlands is certainly a four-season destination, fall is truly special. Mother Nature sets the stage for an impressive show with an array of towering trees, soaring mountain ridgelines, lush valleys, and river gorges that are ablaze in breathtaking red, orange, yellow, and bronze. As home to thousands of acres of unspoiled forests, a bevy of fall festivals, and hundreds of miles of hiking and biking trails, a fall getaway to the Laurel Highlands is sure to be memorable.

PLAN YOUR VISIT



Leaf-Peeping Drives

For the perfect fall outing, take a leisurely ride along winding country roads and discover charming towns, harvest season farm stands, stunning natural wonders, and historic landmarks. While it's not always predictable, the vibrant fall foliage typically peaks in mid-to-late October, so plan accordingly!



Covered Bridges

There are 10 covered bridges tucked away in Somerset County. Can you find them all? During your fall adventure in the Laurel Highlands, discover these unique structures that date back as early as 1830. Each bridge is unique in size and has distinct features, but all bear the same classic red paint and white trim.



Fall Festivals

As fall rolls in, there's no shortage of awesome fall festivals in the Laurel Highlands. Make your way through corn mazes, pick out the perfect pumpkin, browse dozens of arts and crafts booths, sip apple cider, and indulge in delicious comfort food. Here's a sneak peek at some of the region's must-do events:

- Fort Ligonier Days
- Autumnfest at Seven Springs Mountain Resort
- Faranda Farm Harvest Festival
- FestiFall at Friendship Hill National Historic Site
- Delmont Apple 'N Arts Festival



Outdoor Activities

Outdoor activities aren't just for summer! Just swap out the summer heat for a crisp breeze. During the fall, you can still enjoy a whitewater rafting trip on the Youghiogheny River in Ohio, pedal along the Great Allegheny Passage bike trail, take a trek on the Laurel Highlands Hiking Trail, feel the downhill thrill while mountain biking, or zip line through the vibrant fall foliage.



LEARN MORE

For fall drive routes, a full calendar of events, a map of covered bridges, and more, visit laurelhighlands.org/fall



Every couple is unique, and their wedding should be too. Wedding venues in the Laurel Highlands can accommodate any celebration, from an intimate gathering to a party with hundreds of excited friends and family. Happily ever after starts here!

Just the Two of You

Start the adventure of your life together on a romantic getaway to the Laurel Highlands.



Ligonier's Diamond Park and Bandstand

The charming Diamond Park and its iconic bandstand provide a quaint location to exchange your vows any time of year. Contact the Ligonier Borough Office to request the town's mayor to act as your officiant.

State Parks

If you and your loved one are passionate about the great outdoors, plan an outdoor ceremony under towering hemlocks or atop a scenic overlook. The Laurel Highlands is home to eight beautiful state parks, each with its own stunning landscape. Pick a park that pairs well and contact the park office for more details.

Oak Lodge

If you're flexible on wedding dates, consider escaping to Oak Lodge, one of the Laurel Highlands' most romantic elopement spots. You are guaranteed to experience a worry-free ceremony and a romantic honeymoon on site.



Intimate Engagement

Create a special and unique experience for your nearest and dearest family and friends.



Foggy Mountain Lodge

Gather your guests at Foggy Mountain Lodge for a special wedding retreat. There's no need to leave the sprawling property. Enjoy the onsite lodging and restaurant before and after the ceremony and reception.

Westmoreland Museum of American Art

Make your wedding a work of art at the stunning Westmoreland! After exchanging vows, sip champagne and admire the artwork and the expansive city views.



The Barn at Fallingwater

Say "I do" in front of the barn's gorgeous stone fireplace or in the flagstone courtyard surrounded by wisteria-covered trellis. Celebrate your newly-minted marriage surrounded by loved ones in one of the barn's stunning event spaces.

Extraordinary Event

Marry your best friend and throw the celebration of a lifetime at these venues that can handle any request.



Seven Springs Mountain Resort

Celebrate your love at the state's largest resort, with four ceremony and six reception venues to choose from. The newest location, Winterberry, perfectly marries rustic charm and refined elegance.

Nemacolin Woodlands Resort

Let Nemacolin's team of wedding experts make the fairytale wedding you've been dreaming of a reality! Incredible décor, unbelievable service, and exemplary dishes by award-winning chefs will tantalize your guests.

Summit Inn Resort

Your entourage will enjoy a relaxed atmosphere, incredible views, and a custom menu at Summit Inn. The resort's wedding coordinator will help plan the details of your special day and make sure everything goes as planned, from your rehearsal dinner to brunch the day after your wedding.



LEARN MORE For more wedding venues, visit laurelhighlands.org/weddings

SET UP CAMP

COZY UP IN A CABIN
OR TRY GLAMPING!

FOR
MORE
INFO

Don't fret about where you will rest and recharge while exploring the natural wonders of the Laurel Highlands. There is a campsite, cabin, or yurt waiting for you.

laurelhighlands.org/camping



FLIGHT 93 NATIONAL MEMORIAL

A COMMON FIELD ONE DAY.
A FIELD OF HONOR FOREVER.



On September 11, 2001, after passengers and crew stormed the cockpit to prevent the plane from reaching its intended target of Washington, D.C., United Airlines Flight 93 crashed into an open field in the Laurel Highlands near the small town of Shanksville. A year later, President George W. Bush established the Flight 93 National Memorial, a place for quiet reflection and admiration of bravery. There are multiple thought-provoking monuments and emotionally powerful exhibits at the memorial in honor of the 40 passengers and crew members of Flight 93.

Tower of Voices

The Tower of Voices stands at 93-feet tall and, upon completion, will contain 40 chimes to represent the eternal voices of the 40 passengers and crew members of Flight 93. The chimes create tones that convey, through harmony and discord, both the serenity of the site and the tragic event on September 11, 2001.

Wall of Names

Near the Memorial Plaza stands the Wall of Names, a white marble wall positioned on the flight path with 40 panels, engraved with each passenger and crew member's name. The Ceremonial Gate sits at the end of the Wall of Names, where visitors can look down the flight path to the impact site, marked by a 17-ton sandstone boulder.

Visitor Center Complex

Flight Path Walkway and Overlook

A black granite walkway paves the path of United Airlines Flight 93 while the concrete walls narrow one's focus to what lies ahead. Small profound details can be spotted, like time stamps engraved in the walkway marking when the other three planes crashed on September 11, 2001. At the end, visitors approach an overlook where they can view the crash site.

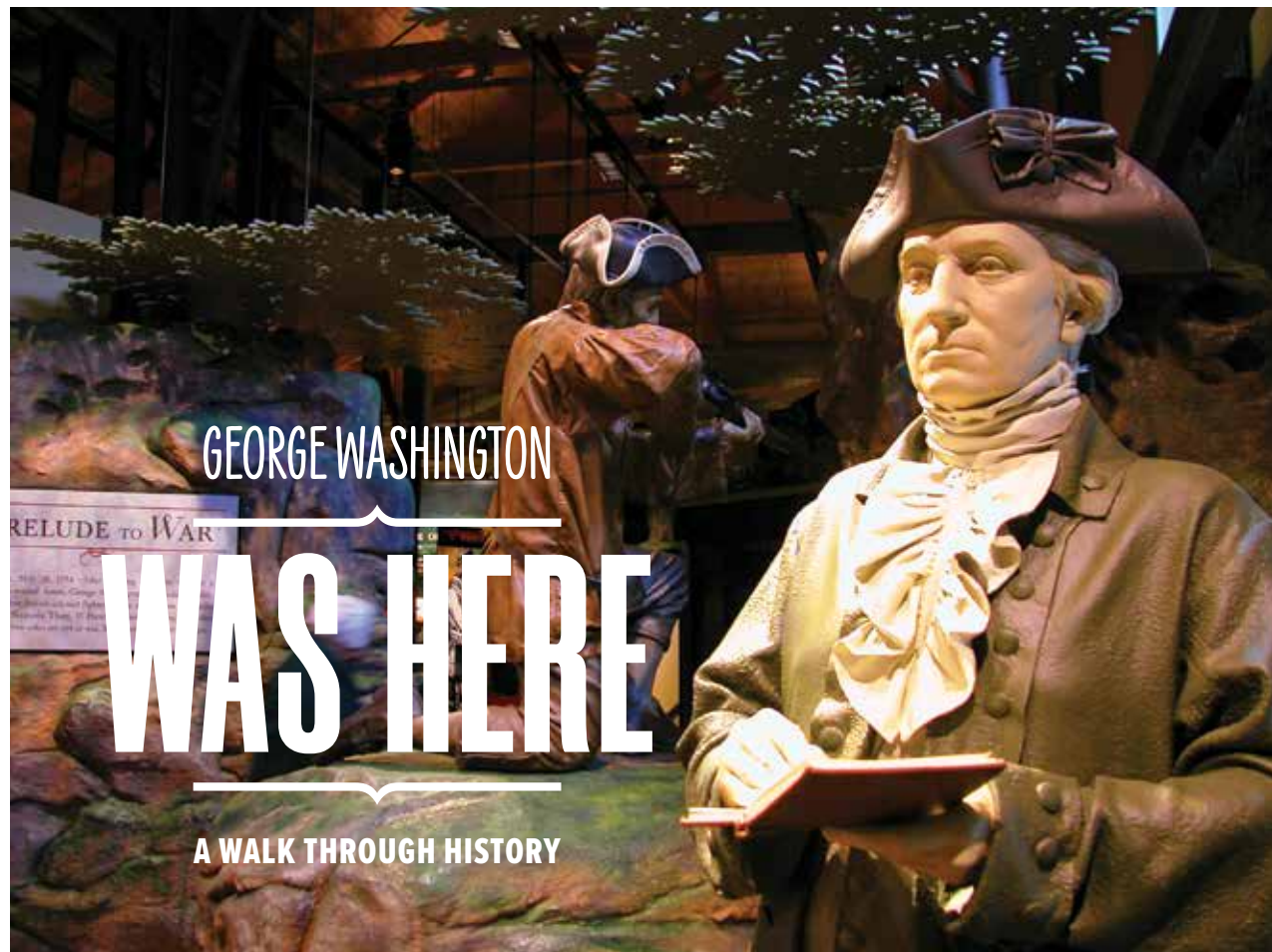
Visitor Center

Tucked between the tall memorial walls, the Flight 93 National Memorial Visitor Center offers a free self-guided tour that includes a chronological display of the day's events, artifacts from the crash site, flight paths, and information about the flight and its passengers.

PLAN
YOUR
VISIT

The memorial is open year-round, except for major holidays.

laurelhighlands.org/flight93



GEORGE WASHINGTON

WAS HERE

A WALK THROUGH HISTORY

An ambitious young officer heads west to claim land for the British. Along the way, he makes mistakes, but he also works hard, persists, and makes a name for himself. Some believe that George Washington's trials and tribulations in Pennsylvania's Laurel Highlands helped him grow into a legendary military leader and eventually the first President of the United States of America.

1. Great Crossings of the Youghiogheny River

May 18, 1754

(Yough River Lake, near Route 40 Bridge, Addison)

Just 22-years old and in command of about 150 colonial troops, British Lt. Col. George Washington was sent to "the forks of the Ohio" to reinforce an advance party of Virginians and prevent the French from seizing their claim. Washington decided to see if he could use the Youghiogheny River at this site as a means to reach the fort quickly, and avoid building miles of road across the mountains.



2. The Turkeyfoot

May 20, 1754

(Along the Great Allegheny Passage in Confluence)

Washington and five men set off in a canoe from the Great Crossings to explore the Youghiogheny River. The group stopped in present-day Confluence, where Washington referred to the site as the "turkeyfoot," after the shape formed by the confluence of the Youghiogheny and Casselman rivers and Laurel Hill Creek.

3. A Falls

May 21, 1754

(Ohiopyle Falls, Ohiopyle)

At "nearly forty feet perpendicular," Washington concluded that the Youghiogheny River "can never be made navigable." The powerful Ohiopyle Falls forced Washington to abandon river passage.



4. The Great Meadows

May 24, 1754

(Fort Necessity National Battlefield, Farmington)

Excited to locate an open meadow, Washington writes that by cutting down some bushes they have "prepar'd a charming field for an encounter." Perhaps it was a little premonition of what was to come...

5. A Very Obscure Place Surrounded by Rocks

May 28, 1754

(Jumonville Glen)

Washington receives news from Tanaghrisson, the Seneca Half King, that a party of French soldiers is nearby. While Washington positioned his troops, the French spotted them and a firefight ensued. After a brief skirmish, 10 Frenchmen were dead, including their commander Ensign Coulon, Sieur de Jumonville. Both sides claimed the other fired first with the French also blaming Washington for the assassination of Jumonville. This event marked the first shots of the French and Indian War.



6. Fort Necessity

July 3-4, 1754

A lone French soldier escaped from the skirmish and reported to the French military leaders at Fort Duquesne. In anticipation of a French attack, Washington returned to the Great Meadows and ordered the construction of a small stockade named Fort Necessity. Five weeks later, on July 3, 1754, he and nearly 400 troops were attacked by a force led by Captain Louis Coulon de Villiers, brother of the slain Ensign Jumonville. After fighting all day in the pouring rain, Washington lost 30 soldiers and 70 were wounded. At midnight, Washington agrees to his first and only military surrender.

7. Engagement with the French on the Monongahela

July 9, 1755

(Braddock's Field History Center, Braddock)

Washington joined British General Edward Braddock as a volunteer aide-de-camp as the British once again tried to capture the French-held Fort Duquesne. Only seven miles from their destination, Braddock's large army of about 1,400 soldiers encountered the French and their Indian allies. After fighting for about three hours, the British suffered huge losses. Washington had four bullets shot through his clothes, but survived unscathed. Braddock was mortally wounded and directed Washington to lead the troops to retreat.

8. Braddock's Grave

July 13-14, 1755

While on the retreat, Braddock succumbed to his injuries. The next day, Washington gave the eulogy at his gravesite. Braddock was buried in the middle of the road and wagons were rolled over top of the gravesite to prevent the general's body from being discovered and desecrated by enemies.

9. Fort Ligonier

October-November 1758

Washington arrived at Fort Ligonier in late October of 1758. On November 12, he was sent a few miles from the fort to assist a group of Virginians who were in a skirmish with a raiding party from Fort Duquesne. Mistaking the Virginians for the enemy, a devastating friendly fire incident ensued in which 40 men were killed or went missing. Three prisoners from Fort Duquesne were taken during the incident. One gave intelligence that Fort Duquesne was weak. General John Forbes led a force, that included Washington, to finally take their objective. On November 25, 1758, Forbes's troops entered the burned-out and abandoned ruins of Fort Duquesne, renaming it Pittsburgh.

10. Stewart's Crossing

October 13, 1770

(Col. William Crawford's Cabin, Youghiogheny River Park, Connellsville)

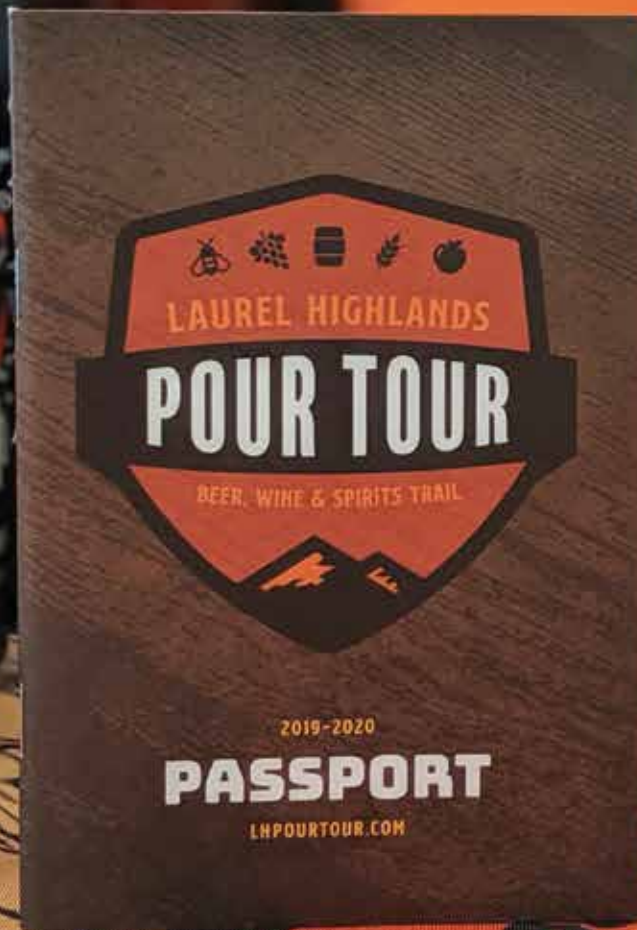
En route to Fort Pitt, Washington and his men visit the home of William Crawford, Washington's childhood friend and land agent. Crawford joins the group to travel the Ohio River looking at land.



LEARN MORE To find out more about the trail, visit laurelhighlands.org/georgewashere

LAUREL HIGHLANDS POUR TOUR

LHPOURTOUR.COM



Grab your Passport AND START TOURING!

Taste your way around the region one glass at a time on the Laurel Highlands Pour Tour! Grab your passport, invite your friends, and discover all of the amazing, unique craft beverage makers in the Laurel Highlands. You can visit:


14
Breweries


11
Wineries


4
Distilleries


1
Cidery


1
Meadery

HOW IT WORKS

Get your FREE passport at lhpourtour.com.

Collect a custom sticker with a purchase (with a valid ID, of course) at participating locations and place it in your passport.

Download the Laurel Highlands Pour Tour app to help you plan a successful itinerary, with a calendar of events and places nearby for each property.

Cash in your stickers for prizes!

8 stickers = LH Pour Tour corkscrew or bottle opener

18 stickers = LH Pour Tour t-shirt

28 stickers = LH Pour Tour insulated growler or a four-pack of insulated wine tumblers

In addition to these prizes, once you complete the passport, you will also be entered into a **grand prize drawing** for a two-night Laurel Highlands getaway!

Use **#LHPourTour** while sharing photos from your excursions!



YOUR GUIDE TO LAUREL HILL STATE PARK

NOT-TO-MISS SPOTS

Scenic View at Laurel Hill

Just a little bit off the beaten path sits the hidden gem of Laurel Hill State Park, the Penn Scenic View Overlook. Park on Scenic View Lane and follow the signs on a short hike to the overlook. The mesmerizing view of acres of rolling hillsides is unforgettable.

Laurel Hill Lake

Laurel Hill Lake is the perfect spot to cool off and splash around. The sandy beach is ideal for spreading out your towels, enjoying a picnic lunch, and relaxing. If you're up for an adventure, rent a kayak, paddle around, and soak up the sun!

Hemlock Trail

Take a peaceful trek on the 1.6-mile Hemlock Trail loop, which leads you along the banks of the Laurel Hill Creek and through a grove of stately towering hemlocks. The sound of the fast-flowing river, the sight of beautiful wildflowers, and some steep inclines and narrow patches make for a great hike.

Laurel Hill Bluegrass Festival

The Laurel Hill Bluegrass Festival is a free two-day event held every August. Festivities include talented artisans, delicious food vendors, period reenactors, a cornhole tournament, and of course, bluegrass bands jammin' at all times! This is a family-friendly event, so be sure to bring the kids to join in on the fun and make memories.

LEARN MORE To plan your trip, visit
laurelhighlands.org/laurelhill

Jones Mill Run Dam

Marvel at the water elegantly cascading over the dam, which was man-made with locally-quarried sandstone in the early 1930s by the Civilian Conservation Corps. You can access the dam by taking a short hike on the Pumphouse Trail, which is easy and wide. In addition to simply enjoying the view, this area is also a hot spot for fly fishing.

Camping

Whether you want to pitch a tent, bring your RV, or rent a cabin, Laurel Hill State Park has a spot for you. Primitive campsites accommodate a handful of people, while the lodges and camping cottages offer enough space for large groups and family reunions.

Winter Sports

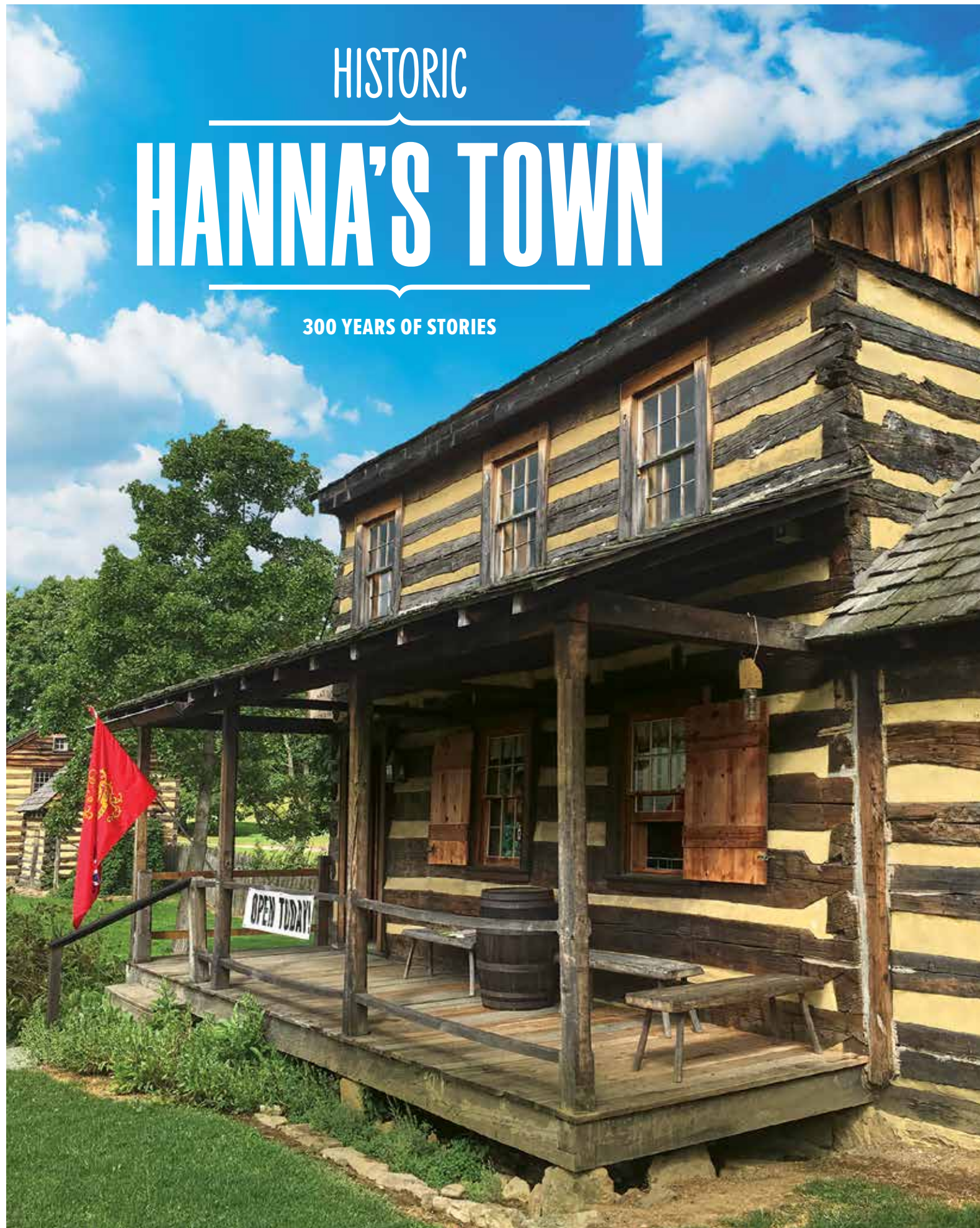
Winter showcases another side of Laurel Hill State Park's features. Laurel Hill Lake welcomes ice fishers trying to snag bass, trout, and perch. After a snowstorm, rent a pair of snowshoes and set out to explore the trails. On a snow day, take the kids to the sledding hill located in the campground and warm up around the bonfire between runs.

Wildlife & Bird Watching

Don't forget your binoculars and have your camera ready! Wildlife watching at Laurel Hill State Park is phenomenal. Among the deciduous forest dominated by oak, maple, cherry, and poplar live little critters like woodchucks, owls, and, sometimes, bald eagles. Pay attention to the beauty below your feet and alongside the trail. Native wildflowers like trillium, goldenrod, and the state's flower, mountain laurel, are abundant within the park.

HISTORIC HANNA'S TOWN

300 YEARS OF STORIES



Historical Stories Abound IN THE LAUREL HIGHLANDS

History is abundant in the Laurel Highlands, and Historic Hanna's Town has almost 300 years of stories to tell. Many conflicts with their dramatic resolutions happened right here in this beautiful region. The battlefields, forts, and artifacts accentuate the written words of historians.

WALK THROUGH TIME



1769

In 1769, farmer and businessman **Robert Hanna** purchased the 337-acre territory on the first day it was legal to own property west of the Allegheny Mountains. The land had everything it needed to be a thriving town: water nearby and an accessible road. The town was the western frontier of America during the American Revolution and a militia was formed. In its peak, Hanna's Town had about 30 homes.



1773

In April 1773, the civilian town was selected as the Westmoreland County seat, making it the site of the **first English courts** west of the Alleghenies. Court was held four times a year and acted as a social gathering as well as a source of entertainment for residents near and far. However, there wasn't a courthouse in town. Court proceedings were conducted outside or within Hanna's Tavern, the biggest building in town.



1782

While the Revolutionary War had formally concluded, consequences were just around the corner. On July 13, 1782, disaster struck at Hanna's Town while court was in session. Residents spotted a force of **Seneca and their British allies** headed toward town. After the town was warned, court was dismissed and everybody grabbed what they could and ran for the fort, even those on trial.



1786

The intent of the raiding party was to weaken the frontier and push settlers east. The Seneca destroyed the town by killing livestock and burning it to the ground. The **raid at Hanna's Town** was considered one of the last conflicts of the Revolutionary War. Hanna's Town never recovered, but court proceedings continued there until 1786, when the county seat was moved to New Town (present-day Greensburg).

1970S

After research and ground studies in the 1970s, the Westmoreland Historical Society started to **rebuild parts of Historic Hanna's Town** as accurately as possible. Today, visitors can walk around Hanna's Tavern and see the stockade fort, jail, and an authentic Conestoga wagon, which dates back to the late 18th or early 19th century.

2019

The Westmoreland Historical Society recently opened its new office space in the 1910 Steel House. The namesake of the house, the **Steel family**, farmed the property around the house for 140 years.

Next door to the Steel House is the new Westmoreland History Education Center. Opened in **spring 2019**, the building is home to the Kendra Gallery, which features rotating exhibits, a museum shop, and an extensive genealogical library. Here residents and visitors can research their family's heritage.

LEARN MORE To plan your trip, visit
laurelhighlands.org/hannastown

Christopher Little, courtesy of the Western Pennsylvania Conservancy.

A FULL FRANK LLOYD WRIGHT IMMERSION IN PENNSYLVANIA'S LAUREL HIGHLANDS

It's official! The World Heritage Committee has inscribed Frank Lloyd Wright's masterpiece, Fallingwater, and seven other works by Wright, to the United Nations Educational, Scientific and Cultural Organization (UNESCO) World Heritage List. There are more than 1,000 World Heritage sites around the world, and the group of Wright sites is now among only 24 sites in the U.S. Fallingwater joins Philadelphia's Independence Hall as one of only two World Heritage sites in Pennsylvania.

To architecture experts, Frank Lloyd Wright was the greatest American architect who ever lived and one of the best the world has ever seen. To those who appreciate nature, it's easy to see how the magnificent natural landscape of Pennsylvania's Laurel Highlands inspired the prolific architect.

Perhaps Wright's most widely-acclaimed creation, **Fallingwater** was designed in 1935 for the Kaufmanns, a prominent Pittsburgh family. Dramatically cantilevered over a waterfall, the house exemplifies Wright's concept of organic architecture: the harmonious union of art and nature. Fallingwater is the only major Wright-designed house to open to the public with its furnishings, artwork, and setting intact. The architectural masterpiece is owned, operated, and preserved by the

Western Pennsylvania Conservancy and has been open to the public as a museum since 1964.

Just seven miles southwest of Fallingwater and high atop a bluff overlooking the Youghiogheny River Gorge stands another Frank Lloyd Wright architectural masterpiece, **Kentuck Knob**. A great believer in the beauty of natural materials, Wright combined the native sandstone with tidewater red cypress to create a chorus of color and texture that replicates the surrounding landscape. Wright started this project for the Hagan family in 1953 at the age of 86, five years before his death. In addition to the house, the grounds of Kentuck Knob feature 30 pieces of sculptures by Andy Goldsworthy, Anthony Caro, and Claes Oldenburg.



Immerse Yourself IN ALL THINGS WRIGHT

VISIT ALL THREE

Fallingwater to
Kentuck Knob
7 MILES

Kentuck Knob to
Polymath Park
29 MILES

Polymath Park to
Fallingwater
23 MILES

Fallingwater

fallingwater.org Allow about two to three hours to enjoy the house tour, explore the grounds and the scenic overlook, peruse the museum shop and Speyer Gallery, and enjoy a bite to eat in the café. It is important to reserve your tour in advance!

Kentuck Knob

kentuckknob.com Plan to spend two hours at this site to experience the house tour, soak in the views of the river gorge, journey through the sculpture garden, shop for mementos in the museum shop, and enjoy some Hagan ice cream. **Kentuck Knob is seven miles from Fallingwater.**

Polymath Park

polymathpark.com The classic three-home tour takes about an hour, but be sure to build in some extra time to enjoy a meal at the superb Treetops Restaurant. **Polymath Park is 23 miles from Fallingwater and 29 miles from Kentuck Knob.**

STAY OVER NIGHT

Make It a Wright Overnight!

Duncan House and Mäntylä offer visitors a truly unique opportunity – the chance to stay overnight in an actual Frank Lloyd Wright-designed home. When guests reserve either home, they are given access to the entire home, not just a specific room. Duncan House and Mäntylä are two of approximately one dozen Frank Lloyd Wright buildings in the United States that offer overnight lodging.

Built in 1957 for Donald and Elizabeth Duncan, the **Duncan House** was disassembled in 2004 and moved from its original location in Lisle, Ill., to Polymath Park, where two homes designed by apprentice Peter Berndtson now stand near the work of the master. Typifying Wright's "Usonian" style, which makes an effort to create affordable housing, the Duncan House is one of 60 such homes he built in the mid-to-late 1950s.

In May 2019, Polymath Park debuted its second Wright home, **Mäntylä**. Built for the Lindholm family in Cloquet, Minn., Mäntylä had been on the market for many years and was in danger of demolition due to encroaching development. The property owners donated the home and all of its original

furnishings to the Usonian Preservation Inc., a nonprofit associated with Polymath Park, in hopes that Mäntylä would find a new life.

The L-shaped home with a distinct prow is now tucked away under the towering trees of Polymath Park and offers tours and overnight lodging. Finnish for "under the pines," the three-bedroom, two-bath Mäntylä features its original Wright-designed furniture, abundant natural light streaming in from walls of glass and strategically-placed windows, and a palette of earth tones to complement the natural surroundings. An expansive terrace overlooks a stream, native flowers, and towering trees.

LEARN MORE

For more information about the Wright experience in the Laurel Highlands, visit **laurelhighlands.org/flw**

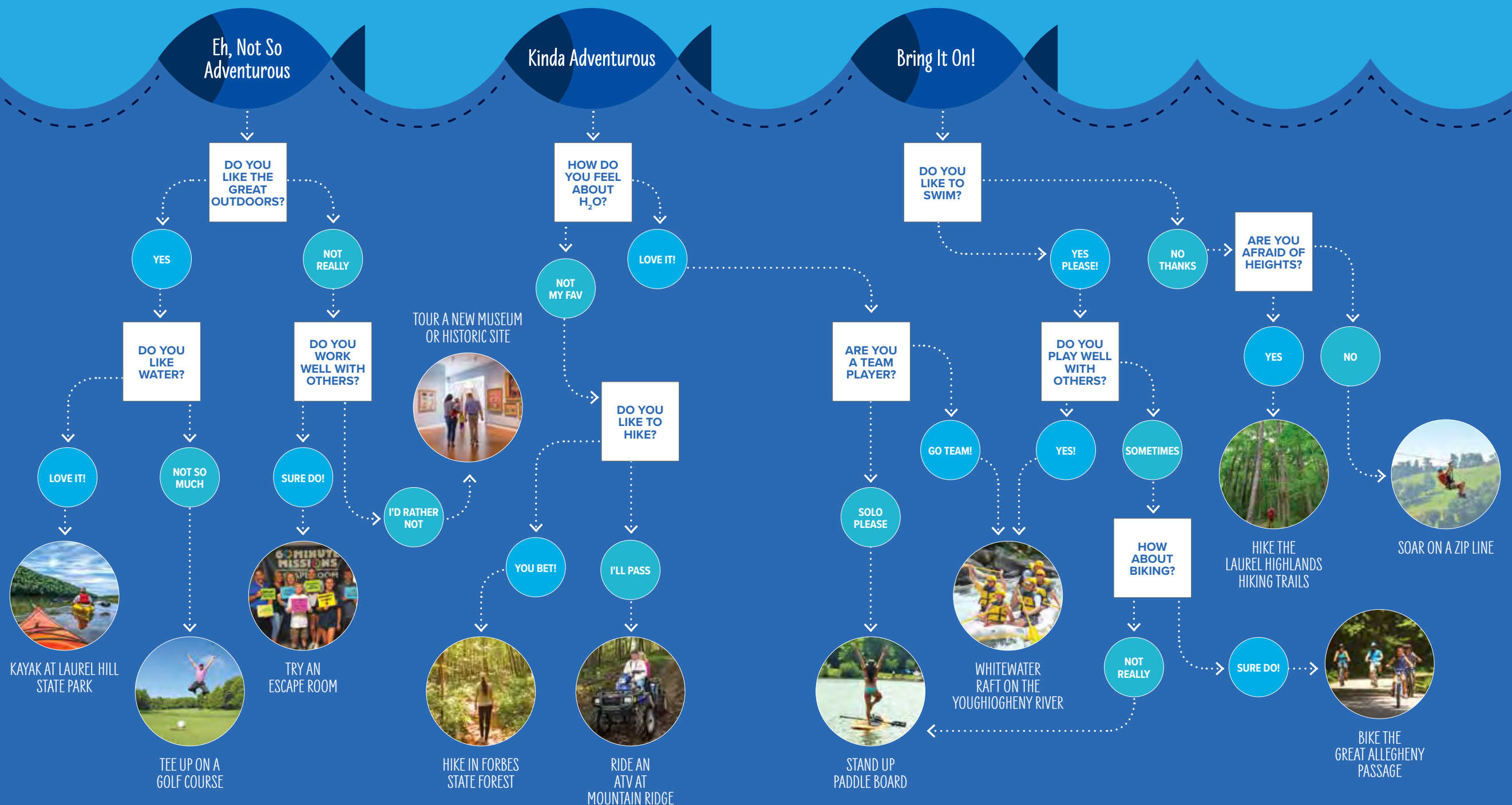
HOW ADVENTUROUS ARE YOU?

FOLLOW THE PATH AND FIND OUT!

There is an Activity

FOR EVERY KIND OF ADVENTURER IN THE LAUREL HIGHLANDS

Adventure in the Laurel Highlands comes in all shapes and sizes. From a heart-pumping adrenaline rush to the thrill of trying a new experience, you will find adventure around every corner. So many decisions, so little time. Take this handy quiz for some inspiration!



THE HISTORIC STONE HOUSE

RESTAURANT

Savor Every Bite

MADE IN THE LAUREL HIGHLANDS

Originally built in 1822 as a summer retreat, The Historic Stone House Restaurant once served those riding in covered wagons going west. After 197 years of continuous operation, business is still booming! Many renovations have been implemented and there is no sign of slowing down. Chef Jeremy Critchfield and his operating partner have carried on traditions from the past and infused new life into the site.

DINING MUSIC EVENTS



The sprawling property includes the original building, which houses the restaurant and 13 hotel rooms, Stone House Butcher and Provisions, the Springs House, and an outdoor barbecue tent area.

The Stone House offers seating for 180 guests in a variety of settings, including formal dining rooms, the sunporch, outdoor patio, and tavern.

“The tavern is by far the most popular dining space,” said Chef Jeremy Critchfield. “It’s very interesting. You have eight bikers sitting here, three hippies from the river over there, a family of six with little kids here, a couple having a romantic meal there. You never know who is coming through.”

The Historic Stone House Restaurant’s menu offers classic dishes with creative spins made from quality ingredients and served in generous portions. However, their claim to fame is barbecue. You can always smell something cooking in the Southern Pride 1500 smoker, which holds 1,500 pounds of meat at a time.

The amazing cuisine and chill atmosphere isn’t the only thing that attracts visitors. The restaurant also hosts a variety of events like Stone House Idol karaoke competition, bike nights every Thursday during the summer, and a beer dinner series. The beer dinner series is a monthly event where Chef Critchfield serves up a unique five-course menu and pairs each dish with a beer from a specific brewery.

The onsite Stone House Butcher and Provisions sells quality meats that you won’t find in a grocery store, including dry-aged meats and individual cuts.

“The dry-aged beef is where we set ourselves apart,” said Critchfield. “Some of the signatures sold in the store include fresh pork belly, custom house-made sausage, and signature recipe elk boar bratwurst with cheddar and jalapeño.”

Be sure to pick up a few bottles of chef’s signature barbecue sauce, dry rubs, bloody Mary mix, and spaghetti sauce to enjoy the flavors of the Laurel Highlands at home.

In 2020, visitors will see the 1840 Fayette Springs House repurposed and revived with two new bars, an outdoor seating area and deck, plus a bandshell for events and live music.

Stone House is a destination for locals and visitors alike. Chef Critchfield says it best: “There’s a lot to savor here.”

LEARN MORE: For a full menu, calendar of events, and more, visit laurelhighlands.org/stonehouse

FRESH BERRIES AT SAND HILL

AND GREENDANCE –
THE WINERY AT SAND HILL

Sweet Treats

MADE IN THE LAUREL HIGHLANDS

The moment you make the turn onto the gravel farm road, you have an immediate sense of place. Row after row of ground-hugging berry plants create a canopy of green as you meander slowly around the bends in the lane. The 110-acre Sand Hill Berries farm is an immersive experience for all of your senses.

BERRIES
WINE
FOOD



In 1986, a partnership between the Lynns (Richard and Susan) and the Schillings (Rob and Amy) started with the purchase of an abandoned farm. Initially, they planted seven acres of red and black raspberries. To their delight, the plants grew, survived, and thrived.

“We were looking for something to do in the summer that could help pay for the farm,” said Susan Lynn. “There are very few raspberries and blackberries we can’t grow because of the climate,” adds Richard.

High temperatures and humidity during the day, cool temps at night, and the high elevation make a great environment for growing.

The farm was primarily wholesale for years; their berries were sold in Whole Foods and Giant Eagle grocery stores. However, the business, thanks in part to its beautiful location, naturally evolved into a wondrous visitor experience.

More than 30 years later, visitors stroll the grounds, listen to live music, and explore the orchards for free. The Cabin offers yummy sandwiches and fresh seasonal salads for purchase, but make sure you save room for a sundae or a slice of pie or cheesecake from Café Persimmon. Before you hit the road, load up your car with jams, jellies, vinaigrettes, whole pies, and fresh berries from The Farm Store to enjoy at home. Then there’s the wine.

The same tasty berries that fill delicious pies are expertly crafted into exquisite wines. Opened in 2007, Greendance – The Winery at Sand Hill uses their own grapes, raspberries, blackberries, red currants, black currants, gooseberries, blueberries, strawberries, elderberries, and heritage variety apples to create unique blends of wine.

There’s a fun story behind the name Greendance. With the new winery underway came the daunting task of developing a brand. One evening while dancing in the basement of what is now the winery, Susan’s sister asked “What about green dancers?” And that was that.

“Greendance spoke to me as the thing you do as you’re trying to grow,” said Susan. “The growing is the green dance.”

The name and a dancing frog mascot, created by Lynn’s friend Irana Shepherd, a children’s storybook illustrator, give the winery a sense of whimsy.

The picturesque grounds are highly sought after for weddings, bridal showers, bachelorette parties, and private events. For the ultimate visitor experience, be sure to snag a seat at their seasonal open-air dinner.

LEARN MORE: For inspiration while building your Sand Hill itinerary, visit laurelhighlands.org/sandhill

FESTIVALS AND EVENTS

SOMETHING FOR EVERYONE

FIND
MORE
EVENTS

To find more festivals and events, visit
laurelhighlands.org/events

2020
DATES

There is no shortage of eclectic and entertaining events in the Laurel Highlands. Whether you're a fan of holiday hoopla, a certified foodie, or a true alien believer, there is something for everyone!

Unusual Events



From acorn UFOs to real life jousting tournaments, you'll fit in at these out-of-this-world events.

Kecksburg UFO Festival

July 24-26, 2020
5128 Water Street
Mount Pleasant

Pittsburgh Renaissance Festival

Saturdays and Sundays,
plus Labor Day Monday
August 22 – Sept. 27, 2020
112 Renaissance Lane
West Newton

Holiday Events



Santa sightings are frequent during the holidays, but festive lights and sleigh rides are abundant! Have a holly jolly Christmas in the Laurel Highlands.

Overly's Country Christmas

Nov. 20 – Dec. 30, 2020
Westmoreland Fairgrounds
116 Blue Ribbon Lane
Greensburg

Holidays in the Highlands

Nov. 27-28 and Dec. 4-5, 2020
Seven Springs Mountain Resort
777 Waterwheel Drive
Seven Springs

Holiday Candlelight Tours

Nov. 27-28 and
Dec. 5-6, 12-13, 2020
Compass Inn Museum
1382 Route 30 East
Laughlintown

Christmas Open House

Nov. 4-8, 2020
Neubauer's Flowers
and Market House
36 East Church Street
Uniontown

Adventure Events



Run, jump, and paddle your way through the Laurel Highlands and test your endurance with these adventurous endeavors.

Youghness Monster 22-Mile Kayak, Canoe and SUP Race

May 3, 2020
Performance Kayak
259 North 6th Street
Connellsville

Beer and Gear Fest

June 20, 2020
Wilderness Voyageurs
103 Garrett Street
Ohiopyle

Five Star Trail Poker Run

July 18, 2020
Lynch Field
520 New Alexandria Road
Greensburg

Laurel Highlands Ultra Races

June 13, 2020
Laurel Highlands Hiking Trail
Ohiopyle

Heritage Events



With reenactments galore, Scottish sports from yesteryear, and a chance to learn at every event, history in the Laurel Highlands is never boring.

Frontier Court Days

June 20-21, 2020
Historic Hanna's Town
809 Forbes Trail Road
Greensburg

47th National Road Festival

May 15-17, 2020
Along the National Road
Fayette and Somerset Counties

Stahlstown Flax Scutching Festival

Sept. 19-20, 2020
Monticue's Grove
1703 Route 711
Stahlstown

Farmers and Threshermens Jubilee

Sept. 9-13, 2020
3054 Kingwood Road
Rockwood

Halloween Events



Hold onto your brooms and get into the spooky spirit with corn mazes, nocturnal animal sightings, or even a walk through a haunted house...if you dare.

HallowBoo!

Saturdays and Sundays
in October 2020
Idlewild and SoakZone
2574 U.S. Route 30
Ligonier

Night at the Zoo

Fridays and Saturdays
in October 2020
Living Treasures Wild Animal Park
288 Route 711
Jones Mills

Valley of Terror

Weekends during fall 2020
Lonesome Valley Farms
180 Fairgrounds Road
Greensburg

Haunted Hollow

Fridays and Saturdays
Oct. 2-31, 2020
126 Woodland Road
Rockwood

Food and Drink



Wine, lobsters, and syrup, oh my! There's always something to sink your teeth into or clink your glass to in the Laurel Highlands.

73rd Annual Pennsylvania Maple Festival

March 28-29 and
April 1-5, 2020
120 Meyers Avenue
Meyersdale

Annual Grape Stomp

Sept. 19, 2020
Vinoski Winery
333 Castle Drive
Belle Vernon

Lobster Clambake

Sept. 12, 2020
Christian W. Klay Winery
412 Fayette Springs Road
Chalk Hill

Greensburg Craft Beer Week

Sept. 18-26, 2020
Downtown Greensburg



Don't you agree that some of the best childhood memories are made at summer camp? It feels like yesterday...sitting around a campfire with your new forever friends and coming home with a suntan and a boost of self-confidence. The Laurel Highlands is the best place for your kiddos to get out in the great outdoors and explore. Many summer camps offer a variety of themes, focuses, and durations designed to suit all interests and ages.

Day Camps

Maybe your child isn't quite ready for an overnight camp, but could really benefit from some daytime adventure and learning. If so, many Laurel Highlands camps and historic and environmental sites offer fun-filled themed day camps as a way to pique their interests and develop new skills.

Powdermill Nature Reserve | Rector

Do you have a budding scientist or naturalist who loves bugs, plants, and critters of all shapes and sizes? Or an outdoor enthusiast who loves to hike and splash in creeks? Your little environmentalist will love the day camp lineup at Powdermill Nature Reserve.

Bushy Run Battlefield | Jeannette

If your little one loves history, check out Bushy Run Battlefield's Children's History Day Camp. Campers will create colonial clothing, learn to march in formation, cook over a fire, enjoy storytelling from reenactors, and more.

Camp Harmony | Hooversville

Fresh air, sunshine, swimming, playing, arts and crafts, and plenty of new friends. This day camp is sure to have your camper smiling and sleeping well each night! Ask about half-day camps for the little ones.

Overnight Camps

If you have an independent, ambitious youngster who is full of energy, they're ready for an overnight summer camp. It's like your traditional sleepover, just tack on introductions to new activities, friends, and more!

Ligonier Camp and Conference Center | Ligonier

Ligonier Camp and Conference Center has five different summer camps to choose from, but perhaps the most unique program is Family Camp. The entire family gets to make lifelong memories by sharing a traditional summer camp experience together! Friendly counselors, rustic cabins, and outdoor excursions complete every program.

**FIND
MORE
CAMPS**

To browse all programs, visit
laurelhighlands.org/summercamps

Laurelville | Mount Pleasant

At Laurelville, there is a summer camp program for every child ages 6 to 17! Surrounded by 600 acres of beauty, your little one will participate in outdoors activities, including ropes courses, creek hikes, whitewater rafting excursions, and more. After a long day of playing, campers enjoy themed dinners and air conditioned cabins that make them feel at home!

Summer's Best Two Weeks | Boswell

At three locations in the Laurel Highlands, friendly counselors lead campers ages 8 through 18 on wilderness trips, assist with developing sport skills, and help build relationships between kids. From nature studies and woodworking to playing chess and archery, your camper will come home with more stories than you can keep up with!



A winter wonderland of fun awaits in the Laurel Highlands! The region's stunning landscape and abundance of natural snow provide everything you could need for a fun-filled snow day or winter getaway. Shred the slopes solo, explore mountaintop trails on a snowmobile with friends, and snuggle fireside with your family after a day of snow tubing, sledding, and snowballs.

Downhill Skiing

The Laurel Highlands boasts four downhill skiing areas that feature terrain parks, the highest vertical drop, and the steepest slope in the state. At each skiing area, you will find slopes of varying difficulty and unique features, but one thing remains constant: astounding views around every turn. If you're not ready to tackle the slopes on your own or need to brush up on your skills, book a lesson with a skilled instructor. After a few hours, you'll be ready for first-timer or intermediate trails.

- Hidden Valley Resort
- Laurel Mountain Ski Area
- Mystic Mountain at Nemaquin Woodlands Resort
- Seven Springs Mountain Resort

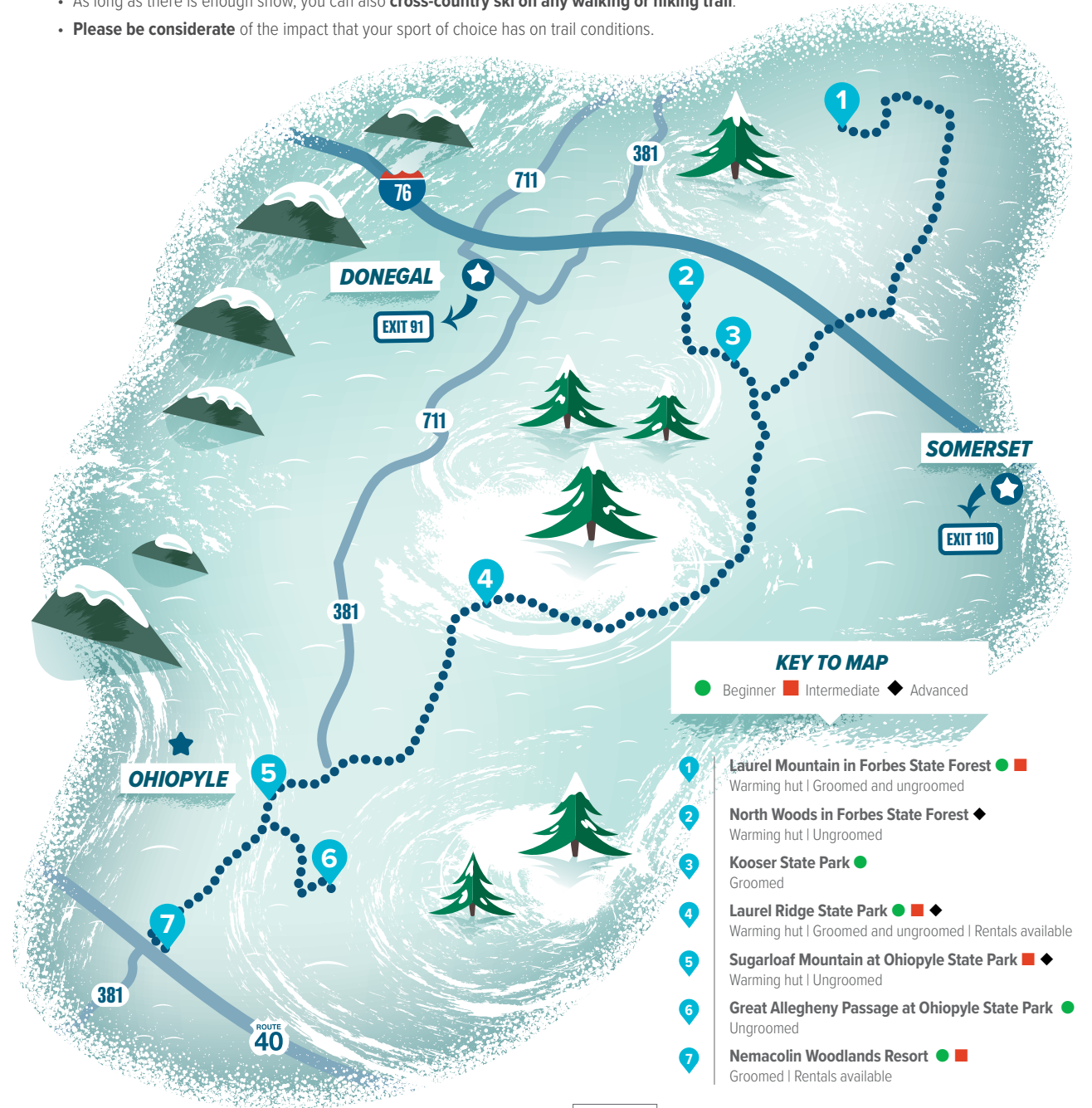
Sledding

Be a snow day hero and take the kiddos sledding in the Laurel Highlands! You can find hills to tackle left and right, but several state parks have designated areas that are perfect for sled riding.

- Laurel Hill State Park not only provides a well-lit sledding area in the campground, but also a firepit and wood to warm up between runs.
- Take a spin on the hill maintained for sledding in the Sugarloaf Snowmobile and Mountain Bike Area of Ohiopyle State Park.
- Keystone State Park doesn't necessarily have an area for sledding, but there is no shortage of hills in the park. Grab your favorite sled and set off to find the perfect spot!

Cross-Country Skiing MAP OF LOCATIONS

- Stop by **Route 31 Bike, Board and Ski or Thrifty Ski** to rent everything you may need for your cross-country skiing excursion.
- As long as there is enough snow, you can also **cross-country ski on any walking or hiking trail**.
- **Please be considerate** of the impact that your sport of choice has on trail conditions.



BEFORE
YOU
HEAD
OUT

Snowmobiling

Snowmobiling is a unique and exhilarating winter sport. Zoom through the snow-covered landscape as you pass towering trees and incredible views blanketed in white. Try it yourself on a guided snowmobiling tour at Seven Springs Mountain Resort.

If you have your own snowmobile, explore miles and miles of trails open for riders in Laurel Highlands' state parks. Forbes State Forest has more than 115 miles of groomed road calling your name!

LEARN MORE: For more information on winter activities, visit laurelhighlands.org/winter

- Dress in layers! Waterproof gloves, breathable pants, an insulated jacket, tall wool socks, a hat, and waterproof boots are necessary.
- Synthetic, water-wicking clothing is best. Do not wear cotton, it will hold water and make you colder.
- Bring a dry change of clothes and comfy shoes to wear for the rest of the day.
- To keep toasty, hand and feet warmers are recommended.
- Pack a snack and water bottle to hydrate and refuel during a break.
- Be sure to bring your trail map along to help you navigate.
- Charge your cell phone before heading out on the trails and be prepared for limited service.



Mountain Biking

If you're looking for a thrill on two wheels, challenge yourself to a mountain bike ride. The diverse terrain in the Laurel Highlands is rugged, flowy, and technical, but it's nothing you can't tackle with some practice!

Practice Makes Progress

If you don't have your own equipment and need a guide to show you the ropes, take a mountain biking lesson at Seven Springs. They will provide rentals, demonstrations, and detailed instructions.

Biking Groups

Join the mountain biking community by linking up with local clubs like OhioPyle Biking Club, Laurel Highlands On and Off Road Bicycling Association, or Flat Tire Co. for group rides and trail work days.

CHECK
OUT
THESE
SPOTS

Mountain Bike Trails

If you're already comfortable in the saddle, grab a buddy and hit some fun beginner trails:

- Quemahoning Trail (Somerset)
- Canyon's Edge and Upper Canyon's Edge (OhioPyle State Park)
- Pleasant Valley Park (Murrysville)

TRY A NEW

EXTREME SPORT

IN THE LAUREL HIGHLANDS

Rock Climbing

Rock climbing is growing in popularity, why not give it a shot? As you practice the sport in the Laurel Highlands, you will soak in breathtaking views while your talent ascends with you.

Take a Lesson

Regardless of your skill level, there is a rock climbing outfitter in OhioPyle eager to get you on the ropes.

Find the Right Equipment

Make sure you're wearing comfortable clothes that are easy to move in before heading out on your climbing adventure.

CHECK
OUT
THESE
SPOTS

Best Climbing Spots

If you're familiar with the sport, or feeling confident after a lesson, check out these climbing spots:

- Meadow Run Climbing Area (OhioPyle State Park)
- Bruner Run Climbing Area (OhioPyle State Park)
- School House Crag (OhioPyle State Park)
- Breakneck Rocks (near Connellsville)
- Coll's Cove (between Connellsville and OhioPyle)
- The Knobs (Dunbar)

LEARN MORE:

For information on shuttle services, regional maps, and more, visit

laurelhighlands.org/biking
laurelhighlands.org/rockclimbing



2020 EVENTS

LAURELHIGHLANDS.ORG/EVENTS

includes a full calendar of events, including festivals, concerts, theater shows, farmers' markets, and other activities.

Winter



JANUARY 17-19

25TH ANNUAL FIRE & ICE FESTIVAL

somerseinc.org
Uptown Somerset
130 North Center Avenue
Somerset, PA 15501
814-443-1748

Experience 50+ Ice
Sculptures, Fireworks, Ice
Skating, Music, Vendors, Live
Carving, Children's Activities,
and a Chili Cook-off in
Somerset's Historic Uptown

JANUARY 25-26

Ice Fest

lignonier.com
The Ligonier Diamond Park
Ligonier, PA 15658
724-238-4200

FEBRUARY 29

Party at The Palace

westmorelandculturaltrust.org
The Palace Theatre
21 West Otterman Street
Greensburg, PA 15601
724-836-1123

Spring

MARCH 14-15

2020 Maple Weekend Taste & Tour

somersecountymaple.org
In and Around Somerset County
Somerset, PA 15501
814-442-3680

MARCH 28-29, APRIL 1-5

Pennsylvania Maple Festival

pamaplefestival.com
120 Meyers Avenue
Meyersdale, PA 15552
814-634-0213

APRIL 18

Walk A Mile In Her Shoes

blackburncenter.org
1011 Old Salem Road
Greensburg, PA 15601
724-837-9540

APRIL 24

IBPA Car Cruise

downtownirwin.com
Main Street
Irwin, PA 15642
412-401-4725

APRIL 25

Greensburg ArtsWalk

greensburgartswalk.com
Throughout downtown Greensburg
Greensburg, PA 15601
724-836-1123

MAY 15-17

47th Annual National Road Festival

nationalroadpa.org
Along 90 miles of the Historic
National Road
Uniontown, PA 15401
724-437-9877

MAY 23-24

18th Century Military Encampment

fortlignonier.org
200 South Market Street
Ligonier, PA 15658
724-238-9701
Experience America's past with
historical interpreters and battle
demos.

MAY 30

Community Open House

touchstonecrafts.org
1049 Wharton Furnace Road
Farmington, PA 15437
724-329-1370
Free, family-friendly event: art
exhibitions, demonstrations, kids craft
activities, more!

MAY 30 - SEPTEMBER 19

Springs Farmers' Market

springspa.org
1711 Springs Road
Springs, PA 15562
240-310-2086
Local Amish produce, baked goods,
antiques, crafts, flea market, plants



Summer

JUNE 4 - AUGUST 20

(Thursdays)

TGIS Free Outdoor Summer Concert Series

westmorelandculturaltrust.org
The Palace Theatre
21 West Otterman Street
Greensburg, PA 15601
724-836-1123

JUNE 5 - AUGUST 28

(Fridays)

Summersounds

summersounds.com
135 North Maple Avenue
Greensburg, PA 15601
724-837-1851



JUNE

Mountain Area Fair

mtareafair.com
119 Elliottsville Road
Farmington, PA 15437
724-329-5513

JUNE 6

Antiques On The Diamond

lignonier.com
The Ligonier Diamond Park
Ligonier, PA 15658
724-238-4200

JUNE 6

Tiques and Teas

facebook.com/sugargroveantiques
309 Georgian Place
Somerset, PA 15501
814-445-3161

JUNE 13

Lavender Festival

cwklaywinery.com
412 Fayette Springs Road
Chalk Hill, PA 15421
724-439-3424

JUNE 16-28

Honky Tonk Angels

mountainplayhouse.org
7690 Somerset Pike
Jennerstown, PA 15547
814-629-9220

JUNE 18-20

National Road Chainsaw Carving Festival

carvingfest.confluencelions.org
Addison Community Park
Fike Lane
Addison, PA 15411
814-395-3469



JUNE 18-21

Miner's Memorial Day Festival

echt.org
Graham Avenue
Windber, PA 15963
814-244-7772

JUNE 20

Beer & Gear Festival

wilderness-voyageurs.com
112 Garrett Street
OhioPyle, PA 15470
800-272-4141

JUNE 20-21

Frontier Court Reenactments

westmorelandhistory.org
809 Forbes Trail Road
Greensburg, PA 15601
724-836-1800
18th century trials, demonstrations,
militia encampments/battle scenarios,
kids' station.



JUNE 20-21

Hammer In and Children's Living History

compassinn.org
1382 Route 30 East
Laughlintown, PA 15655
724-238-4983

2020 EVENTS

LAURELHIGHLANDS.ORG/EVENTS

includes a full calendar of events, including festivals, concerts, theater shows, farmers' markets, and other activities.

JUNE 27-28
17th Annual Braddock's Crossing of the Yough
 connellsvillehistoricalsociety.com
 7th Street and Youghiogheny River
 Connellsville, PA 15425
 724-628-5344
 Reenactors, refreshments, actual crossing of Yough at 1:00PM both days

JULY 2-5
Westmoreland Arts & Heritage Festival
 artsandheritage.com
 Twin Lakes Park
 Greensburg, PA 15601
 724-834-7474



JULY 7-19
Perfect Wedding
 mountainplayhouse.org
 7690 Somerset Pike
 Jennerstown, PA 15547
 814-629-9220

JULY 10-12, 17-19, 24-26
The Grimsby Lads
 freeporttheatrefestival.org
 2498 White Cloud Road
 Leechburg, PA 15656
 724-295-1934
 New drama set in the English fishing town of Grimsby.

JULY 16
Music In The Streets
 downtownirwin.com
 Main Street
 Irwin, PA 15642
 412-401-4725

JULY 17-18
Summer in Ligonier
 ligonier.com
 The Ligonier Diamond Park
 Ligonier, PA 15658
 724-238-4200

JULY 18-19
Living History at Compass Inn Museum
 compassinn.org
 1382 Route 30 East
 Laughlintown, PA 15655
 724-238-4983

JULY 21 - AUGUST 9
Buddy: The Buddy Holly Story
 mountainplayhouse.org
 7690 Somerset Pike
 Jennerstown, PA 15547
 814-629-9220



JULY 25-27
Uptown Chalk the Block Festival
 somersetinc.org
 131 North Center Avenue
 Somerset, PA 15501
 814-443-1748
 Western PAs largest street painting event: chalk, music, interactive art

JULY 30 - AUGUST 8
Fayette County Fair
 fayettefair.com
 132 Pechin Road
 Dunbar, PA 15431
 724-628-3360



AUGUST 1-2
25TH ANNIVERSARY OF THE BATTLE OF BUSHY RUN
 bushyrunbattlefield.com
 1253 Bushy Run Road
 Jeannette, PA 15644
 724-527-5584

Witness history as the Battle of Bushy Run is brought to life! Experience 18th century frontier life for European settlers and Native peoples alike in this annual historical reenactment.

AUGUST 1
Gig On Main
 downtownirwin.com
 Main Street
 Irwin, PA 15642
 412-401-4725

AUGUST 8
50th Annual Somerset Antique & Vintage Fair
 somersetpa.net
 601 North Center Avenue
 Somerset, PA 15501
 814-445-6431

AUGUST 11-23
Popcorn Falls
 mountainplayhouse.org
 7690 Somerset Pike
 Jennerstown, PA 15547
 814-629-9220

AUGUST 14
The Stroll! Ligonier's Car Cruise
 ligonier.com
 The Ligonier Diamond Park
 Ligonier, PA 15658
 724-238-4200



AUGUST 14-16, 21-23, 28-30
Baboon
 freeporttheatrefestival.org
 2498 White Cloud Road
 Leechburg, PA 15656
 724-295-1934
 Baboon, a topsy-turvy comedy in August!

AUGUST 15-16
Laurel Hill Bluegrass Festival
 laurelhillbluegrass.com
 1454 Laurel Hill Park Road
 Somerset, PA 15501
 814-445-7725

AUGUST 15-16
Living History at Compass Inn Museum
 compassinn.org
 1382 Route 30 East
 Laughlintown, PA 15655
 724-238-4983

AUGUST 21-29
Westmoreland Agricultural Fair
 westmorelandfair.com
 123 Blue Ribbon Lane
 Greensburg, PA 15601
 724-423-5005



AUGUST 22 - SEPTEMBER 27
(Weekends only and Labor Day)
Pittsburgh Renaissance Festival
 pittsburghrenfest.com
 112 Renaissance Lane
 West Newton, PA 15089
 724-872-1670



AUGUST 22-29
Somerset County Fair
 somersetcountyfairpa.com
 7842 Mount Davis Road
 Meyersdale, PA 15552
 814-634-5619



AUGUST 29
Greensburg Music Fest
 westmorelandculturaltrust.org
 Throughout Downtown Greensburg
 Greensburg, PA 15601
 724-836-1123

LOOK
HERE!



BUY FRESH, SHOP LOCAL!

Try some local flavor at farmers' markets across the Laurel Highlands, typically open every weekend from late May until late October. You will be amazed by the products and goodies farmers' markets offer, from produce to homemade crafts and even a delicious lunch!

Fall

SEPTEMBER 4-7
27th Annual Pennsylvania Arts & Crafts Labor Day Festival
 familyfestivals.com
 Westmoreland Fairgrounds
 116 Blue Ribbon Lane
 Greensburg, PA 15601
 724-863-4577



SEPTEMBER 5
Wellness on the Yough
 wellnessontheyough.wordpress.com
 259 North 6th Street
 Connellsville, PA 15425
 724-562-0682

SEPTEMBER 5-6
Annual Pilgrimage in Honor of Our Lady of Perpetual Help
 sistersofstbasil.org
 500 West Main Street
 Uniontown, PA 15401
 724-438-8644

SEPTEMBER 9-13
Farmers and Threshermens Jubilee
 ncrvfc.com
 3054 Kingwood Road
 Rockwood, PA 15557
 814-926-3142

SEPTEMBER 11-12
Sandyvale Wine Experience
 sandyvalememorialgardens.org/
 wine-festival
 80 Hickory Street
 Johnstown, PA 15902
 814-536-7993



SEPTEMBER 11-13
Mountain Craft Days
 somersethistoricalcenter.org
 10649 Somerset Pike
 Somerset, PA 15501
 814-445-6077



SEPTEMBER 11-13, 18-20, 25-27
President Arthur's Inspiration
 freeporttheatrefestival.org
 2498 White Cloud Road
 Leechburg, PA 15656
 724-295-1934
 President Arthur's Inspiration, written by Mike Firek.

SEPTEMBER 12
Murrysville Heritage Festival
 murrysvillehistory.org
 Triangle Lane, Off Route 22
 Murrysville, PA 15668
 724-327-6942



SEPTEMBER 15-27
Ripcord
 mountainplayhouse.org
 7690 Somerset Pike
 Jennerstown, PA 15547
 814-629-9220

SEPTEMBER 19
Laurel Highlands Chili Cook-Off & Mountain Harvest Festival
 cwklawinery.com
 412 Fayette Springs Road
 Chalk Hill, PA 15421
 724-439-3424

SEPTEMBER 19-20
Allegheny Rockets Oldsmobile Show
 alleghenyrockets.net
 Seven Springs Mountain Resort
 777 Waterwheel Drive
 Seven Springs, PA 15622
 412-889-8027

SEPTEMBER 19-20
Derry Railroad Days
 derryrailroaddays.com
 Downtown Derry Borough
 Derry, PA 15627
 724-309-1746

SEPTEMBER 19-20
Ligonier Highland Games
 ligonierhighlandgames.org
 Idlewild and Soakzone
 Route 30 East
 Ligonier, PA 15658
 814-931-4714



SEPTEMBER 19-20
Stahlstown Flax Scutching Festival
 flaxscutching.org
 1703 Route 711
 Stahlstown, PA 15687
 724-593-2119

SEPTEMBER 25-27
Mount Pleasant Glass & Ethnic Festival
 mtleasantglassandethnifestival.com
 1 South Diamond Street/Washington
 Street/Veterans Park
 Mount Pleasant, PA 15666
 724-542-4711

SEPTEMBER 26
29th Annual PotatoFest
 potatofest.com
 Downtown Ebensburg
 300 West High Street
 Ebensburg, PA 15931
 814-472-8414

SEPTEMBER 29 - OCTOBER 11
Sanders Family Christmas
 mountainplayhouse.org
 7690 Somerset Pike
 Jennerstown, PA 15547
 814-629-9220



OCTOBER 2-3
Springs Folk Festival
 springspa.org/folk-festival.php
 1711 Springs Road
 Springs, PA 15562
 814-442-4594

OCTOBER 2-4
Confluence Pumpkinfest
 confluence-pumpkinfest.org
 Confluence Town Park
 Confluence, PA 15424
 724-366-5590

OCTOBER 3-4
Delmont Apple 'N' Arts Festival
 delmontapplenarts.com
 Shields Farm
 Contact Place
 Delmont, PA 15626
 724-325-8867

OCTOBER 3-4
Wine Fest Weekend!
 greendancewinery.com
 306 Deer Field Road
 Mount Pleasant, PA 15666
 724-547-6500
 Wine Festival carnival games, tastings, music, grape stomping, and more!



2020 EVENTS

LAURELHIGHLANDS.ORG/EVENTS

includes a full calendar of events, including festivals, concerts, theater shows, farmers' markets, and other activities.

OCTOBER 3-4, 10-11

Bedford Fall Foliage Festival
bedfordfallfestival.com
Historic Downtown Bedford
Bedford, PA 15522
814-624-3111

OCTOBER 9-11

Fort Ligonier Days
fortligonierdays.com
120 East Main Street
Ligonier, PA 15658
724-238-4200



OCTOBER 17
Ghost Walk
downtownirwin.com
Main Street
Irwin, PA 15642
412-401-4725

OCTOBER 23-24
Jack-O-Lantern Tours
westmorelandhistory.org
809 Forbes Trail Road
Greensburg, PA 15601
724-836-1800
Experience the fears and folklore of the 18th century!



OCTOBER 24

Fall Family Days
westmorelandhistory.org
809 Forbes Trail Road
Greensburg, PA 15601
724-836-1800
Fun activities for children,
family-friendly tours, militia
encampment & demonstrations



OCTOBER 24-25
Open House Fall Festival
sandhillberries.com
304 Deer Field Road
Mount Pleasant, PA 15666
724-547-4760
Apple Barn, Cider, Artisan
Vendors, Food, Live Music,
and more!

OCTOBER 24, 30-31
Halloween Hauntings at Compass Inn Museum
compassinn.org
1382 Route 30 East
Laughlintown, PA 15655
724-238-4983



Holiday

NOVEMBER 4-8

Christmas Open House
neubauersflowers.com
36 E. Church Street
Uniontown, PA 15401
724-437-5500



NOVEMBER 5
Ladies Night
downtownirwin.com
Main Street
Irwin, PA 15642
412-401-4725

NOVEMBER 7, 14, 21
Harvest Candlelight Tours at Compass Inn Museum
compassinn.org
1382 Route 30 East
Laughlintown, PA 15655
724-238-4983



NOVEMBER 20-
DECEMBER 30

OVERLY'S COUNTRY CHRISTMAS®

overlys.com
Westmoreland Fairgrounds
Greensburg, PA 15601
724-423-1400

Celebrate the season at
Overly's Country Christmas®,
an old-fashioned Christmas
Village filled with an array of
traditions and treats.
Visit with Santa, shop for
gifts and more.

NOVEMBER 27

Light Up Ligonier
ligonier.com
The Ligonier Diamond Park
Ligonier, PA 15658
724-238-4200



NOVEMBER 28-29,
DECEMBER 5-6, 12-13
Holiday Candlelight Tours at Compass Inn Museum
compassinn.org
1382 Route 30 East
Laughlintown, PA 15655
724-238-4983

DECEMBER 5
Holiday Open House
cwklawinery.com
412 Fayette Springs Road
Chalk Hill, PA 15421
724-439-3424

DECEMBER 6
Town-Wide Open House
Ligonier.com
The Ligonier Diamond Park
Ligonier, PA 15658
724-238-4201



ALPINE RETREAT B&B

10% Off of Individual Room or Whole House Rental

Close to many activities including FLWright homes, golf, skiing, rafting, hiking located at 7 Springs.



alpineretreatbnb.com | 412-401-2041
244 Alpine Heights Road | Champion, PA 15622
B&B Sunday-Thursday, 2 night minimum for weekends whole house
Coupon Effective: January 1, 2020 – December 31, 2020

COUNTRY PIE SHOPPE

\$1 Off Any 9" Pie

Home-style bakery featuring pies,
cakes, cookies, breads & cinnamon
rolls baked from scratch.



countrypieshoppe.com | 724-547-7105 & 724-593-7105
6577 Route 819 South, Mount Pleasant, PA 15666
3822 Route 31, Donegal, PA 15628
Coupon Effective: January 1, 2020 – December 31, 2020

FALLS CITY RESTAURANT & PUB

Free Appetizer with the Purchase of an Entree

THE post-fun hangout in Ohio!pyl
50 microbrews, live music & casual fare.



fallscitypub.com | 800-272-4141
112 Garrett Street | Ohio, PA 15470
Good up to \$10, must purchase entree
Coupon Effective: January 1, 2020 – December 31, 2020

LAUREL HIGHLANDS RIVER TOURS & OUTDOOR CENTER

10% Off Rafting, Zip-lining, Bike Rentals, and Camping

Guided rafting, zip-lining, bike
rentals, rock climbing, lodging and
camping. Packages available.



laurelhighlands.com | 724-329-8531
4 Sherman Street | Ohio, PA 15470
Mention Promo Code TGO for discount.
Coupon Effective: January 1, 2020 – December 31, 2020

LIVING TREASURES ANIMAL PARK

20% Off Weekday Admission 10% Off Weekend Admission

Cute baby animals, beautiful exotic
animals, glass front big cat exhibits,
pony rides, & more.



FunInDonegal.com | 724-593-8300
288 Pennsylvania 711 | Jones Mills, PA 15646
Valid only at the Laurel Highlands Location
Coupon Effective: April 1, 2020 – November 11, 2020

CADDIE SHAK FAMILY ENTERTAINMENT CENTER

Buy One Round of Miniature Golf, Get One Round Free

Family oriented, outdoor fun
with go-karts, miniature golf &
bumper boats.



CaddieShak.com | 724-593-7400
132 Caddie Shak Road | Donegal, PA 15628
Must present coupon. One coupon per transaction.
Coupon Effective: January 1, 2020 – December 31, 2020

DARLINGTON INN

10% Off Food Purchase of \$25 or More

Family restaurant, authentic
Hungarian cuisine featuring
Elizabeth's delicious home-cooked
meals. Four miles from Ligonier.



darlingtoninn.com | 724-238-7831
1473 Darlington Road, Ligonier PA 15658
Gratuity, alcoholic beverages NOT included, cannot be combined other offers
Coupon Effective: January 1, 2020 – December 31, 2020

LADY LUCK CASINO NEMACOLIN

Earn 200 Tier Points, Get \$10 Free Play

Feel free to have fun at your Laurel
Highlands gaming destination, now
with free entry! Gambling Problem?
Call 1-800-GAMBLER.



ladylucknemacolin.com | 724-329-7500
4067 National Pike, Route 40 | Farmington, PA 15437
See Players Club for complete details. GAMBLING PROBLEM? CALL 1-800-GAMBLER
Coupon Effective: January 1, 2020 – December 31, 2020

LAURELVILLE

Play for the Day (4 people free!) Stay-10% Off Lodging

However you unwind-Relaxation or
Recreation- retreat to Laurelville to
enjoy & explore the Laurel Highlands!



laurelville.org | 724-423-2056
941 Laurelville Lane | Mount Pleasant, PA 15666
Limit one coupon/group/year. Lodging valid for new customers.
Coupon Effective: January 1, 2020 – December 31, 2020

MOUNTAIN PLAYHOUSE

\$5 Off 2020 Performance Ticket

Enjoy live professional theater!
Performances Tuesday-Sunday.
Musicals, comedies and dramas.
Air-conditioned.



mountainplayhouse.org | 814-629-9220
7690 Somerset Pike | Jennerstown, PA 15547
Reservations required with code LHSF20.
Coupon Effective: January 1, 2020 – December 31, 2020



laurelhighlands.org/deals



laurelhighlands.org/deals



laurelhighlands.org/deals



laurelhighlands.org/deals



laurelhighlands.org/deals



laurelhighlands.org/deals



laurelhighlands.org/deals



laurelhighlands.org/deals



laurelhighlands.org/deals



laurelhighlands.org/deals

OLD GENERAL STORE

10% Off Purchase

Capturing the hometown feel of the old general store of yesteryear. Nostalgic candy & gifts



oldgeneralstore.com | 724-547-7112 & 724-593-7112
300 Bessemer Road, Mount Pleasant, PA 15666
3822 Route 31, Donegal, PA 15628
Coupon Effective: January 1, 2020 – December 31, 2020

PEDDLER'S MERCANTILE

10% Off Purchase

A unique primitive gift shop offering handcrafted items, candles, homemade baked goods and more.



facebook.com/bizypeddler | 724-603-3150
2310 Moyer Road | Connellsville, PA 15425
Coupon must be presented at the time of purchase.
Coupon Effective: January 1, 2020 – December 31, 2020

ROADMAN'S COUNTRY LIVING

20% Off Purchase

Premier gift shop. Home decor, florals, candles, gifts. Everything to make your house a home.



724-539-1844
1025 Latrobe 30 Plaza, Suite 125 | Latrobe, PA 15650
One coupon per person. Not valid with any other offer.
Coupon Effective: January 1, 2020 – December 31, 2020

STONE HOUSE RESTAURANT & COUNTRY INN

10% Dining Discount on Purchase of \$25 or More

Join us at the Historic Stone House. American hospitality, welcoming the weary traveler since 1822.



stonehouseinn.com | 724-329-8876
3023 National Pike, Farmington PA 15437
Does not include gratuity or alcoholic beverages.
Coupon Effective: January 1, 2020 – December 31, 2020

WILDERNESS VOYAGEURS

\$15 Daily Bike Rental

Largest selection of bikes on the Great Allegheny Passage. Cannondale and Kona bikes!



wilderness-voyageurs.com | 800-272-4141
103 Garrett Street | Ohiopyle, PA 15470
Based on availability, no cash value
Coupon Effective: January 1, 2020 – December 31, 2020

PAINTING WITH A TWIST/GREENSBURG

10% Off with the Purchase of Two Seats

Fun, Entertaining, Family, Date Night, Wine, Great Night Out, Unwind, BYOB, Paint & Sip, Relax



paintingwithatwist.com/greensburg | 724-221-6527
1020-1 Town Square Drive | Greensburg, PA 15601
*Restrictions apply. Call for details & to book your reservations
Coupon Effective: January 1, 2020 – December 31, 2020

RIDGE RUNNER DISTILLERY

Free Logo Shot Glass with Purchase

Tasting room, Cocktails, Cigars & Tours. Craft Distilled Moonshines, Vodka & Whiskey.



ridgerunnerdistillery.com | 724-434-6659
417 Fayette Springs Road | Chalk Hill, PA 15421
With Bottle Purchase.
Coupon Effective: January 1, 2020 – December 31, 2020

SAINT VINCENT GRISTMILL

10% Off

Saint Vincent and other breads, specialty flours and other gifts at working 19th century gristmill



saintvincentgristmill.com | 724-805-2601
300 Fraser Purchase Road, Latrobe PA 15650
Coupon Effective: May 5 – October 31, 2020

WEST OVERTON VILLAGE AND MUSEUMS

\$5 Off \$25 Purchase in the Gift Shop

Visit the West Overton Museums gift shop for unique regional items and whiskey-themed gems.



westovertonvillage.org | 724-887-7910
109 West Overton Road, Scottsdale PA 15683
May not be combined with other discounts.
Coupon Effective: January 1, 2020 – December 31, 2020



laurelhighlands.org/deals



laurelhighlands.org/deals



laurelhighlands.org/deals



laurelhighlands.org/deals



laurelhighlands.org/deals



laurelhighlands.org/deals



laurelhighlands.org/deals



laurelhighlands.org/deals



laurelhighlands.org/deals



laurelhighlands.org/deals

PHOTO CONTEST

2019 WINNERS

Bring Your Camera TO THE LAUREL HIGHLANDS

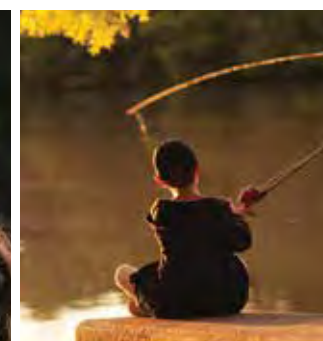
- Be sure to bring your camera while exploring the Laurel Highlands.
- Submit your photos to our annual photo contest for a chance to win cash prizes.
- For photo contest guidelines and to submit your photos, visit laurelhighlands.org/photocontest.
- Deadline for submissions is **July 31, 2020**.

CATEGORY 1: PEOPLE

1st Place:
Amanda Dowdy
Packsaddle Bridge

2nd Place:
Lori Ostroski
Saint Vincent Lake

3rd Place:
Tim Krupar
Westmoreland String Workshop



CATEGORY 2: PLANTS AND ANIMALS

1st Place:
Jeff Helsel
Ohiopyle State Park

2nd Place:
Krystal Ritenour
Linn Run State Park

3rd Place:
Tim Krupar
Greensburg



CATEGORY 3: PLACES

1st Place:
Alexandra Davis
Berlin

2nd Place:
Linda Seanor
Johnson Church

3rd Place:
Dana Rukse
Jennerstown Speedway

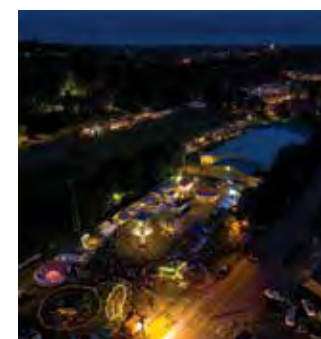


CATEGORY 4: FESTIVALS AND EVENTS

1st Place:
Dana Rukse
Greensburg Community Day

2nd Place:
Denise Eidemiller
Westmoreland County Airshow

3rd Place:
Linda Seanor
Somerset County Fair



WHERE HISTORY HANGS

From an exceptional collection to amazing archaeological finds, visitors will be intrigued with the 8-acre French and Indian War fort and the museum's one-of-a-kind exhibits, including the rare Washington-Lafayette pistols.

200 South Market Street
Ligonier, PA 15658
724.238.9701
fortligonier.org




Where Animals Are Loved! 724.593.8300

LIVING TREASURES WILD ANIMAL PARK

At Living Treasures you are invited to touch and experience many up-close interactions with some incredible animals. Bring your family to meet our animal family.

Stay & Play

Every room is uniquely decorated, some are equipped with fireplaces & jacuzzis. Private suites are available with 1-6 bedrooms, some with hot tubs, fireplaces, kitchens, & game rooms.

LOG CABIN LODGE & SUITES

FunInDonegal.com

288 Route 711 ■ Jones Mills, PA 15646

OUR NEW CENTER FOR HEALTH IMPACT LOCATION ALLOWS US TO ACCOMMODATE EVEN MORE STUDENTS!

Highlands Hospital Regional Center for Autism



Highlands Hospital Regional Center for Autism (HHRCA) is honored to offer autism services in affiliation with Cleveland Clinic Children's Hospital's Center for Autism.

Our licensed private school is modeled after Cleveland Clinic's esteemed Lerner School. HHRCA provides families and children in Southwestern Pennsylvania with state-of-the-art educational and behavioral treatment. The program model to which we adhere has shown sterling documented positive outcomes in educational, medical, and behavioral programming. Intensive treatment through the exclusive use of Applied Behavioral Analysis (ABA) offers our students the highest possibility for success.



In affiliation with



Cleveland Clinic Children's Center for Autism

Now Accepting Enrollment Applications! **Call (724) 603-3360**

401 East Murphy Avenue | Connellsville, PA 15425 | Phone: 724-628-1500 | highlandshospital.org

The Genius of Frank Lloyd Wright



Wright at Polymath Park



Fallingwater
a UNESCO World Heritage Site



Kentuck Knob

The beautiful Laurel Highlands is the perfect setting for outstanding examples of Frank Lloyd Wright's architecture. Reservations for each house, located about 90 minutes southeast of Pittsburgh, are encouraged.

PolymathPark.com 724-329-8501 Fallingwater.org 724-329-8501 KentuckKnob.com 724-329-1901

FOR THE FAMILY



WON'T YOU BE MY NEIGHBOR?

Did you know that Fred Rogers' hometown is in the Laurel Highlands? The children's television personality was born in Latrobe! Tour the Fred Rogers Center at Saint Vincent Collect to see artifacts like his iconic sweaters, shoes, puppets, and more.

SWEET TOOTH



HOME OF THE BANANA SPLIT

In 1904, a pharmacist named Dr. David Strickler invented the classic banana split at his drug store soda fountain on Ligonier Street in Latrobe. He started selling the tasty treats for 10 cents and it was quickly embraced by the world.

Oak Lodge

Experience this Rustic and Luxurious Laurel Highlands Wedding Venue and B and B
We have it all: hospitality, new cabins, historic log chapel, pool, spa, farm-to-table breakfast and hiking
All nestled into 800 amazing acres. A true escape to nature! www.oaklodgepa.com




**Every season
there's a reason
to visit
Somerset County!**

Somerset County
Chamber of Commerce
(814) 445-6431
www.somersetpa.net

the Chamber
SOMERSET COUNTY





**Family Fun
For More
Than 25
Years!**



SeaBase
FAMILY FUN CENTER Since 1995



Book Your Party With Us!

770 E. Pittsburgh St., Greensburg, PA • 724-838-8887

Instagram @seabasefun • www.seabasefun.com • facebook.com/seabase

Sunday - Thursday 10 am - 9 pm • Friday & Saturday 10 am - 10 pm

20,000 Sq.Ft. of FUN!

- 2 of the Area's Largest Indoor Play Gyms
- Toddler Play Area
- Laser Maze Challenge
- Miniature Golf Course

- EyePlay Interactive Game Floor
- SeaBase Express Train
- LaserBlast Laser Tag
- Video Arcade with Redemption Games

- Food Galley with Full Service Menu
- 5 Themed Birthday Party Rooms








**DISCOVER
WESTMORELAND
COUNTY**

FIND YOUR NEXT ADVENTURE AND
JOIN OUR **TRAVEL CONTEST** AT
WESTMORELANDHERITAGE.ORG

724-836-1800 X 300

QUAINT TOWNS



SCENIC VIEWS





Visit the Allegheny Foothills of Pennsylvania and stay at Mountain Pines, one of the finest RV Resorts in the region!





MOUNTAIN PINES

CAMP GROUND

1662 Indian Creek Valley Rd. Champion Pa 15622 / 724-455-3300

www.MountainPinesCamping.com



- ◆ Indoor and Outdoor Swimming Pools
- ◆ Game Room with Ticket Redemption
- ◆ Tennis - Basketball - Volleyball Courts
- ◆ 18 Hole Mini Golf Course - GaGa Ball
- ◆ Jump Pad - Playgrounds - Snack Bar
- ◆ Themed Weekends - Planned Activities
- ◆ Stocked Trout Stream - Bike Trail Access
- ◆ Lodge - Cabin - Golf Cart Rentals

STATE THEATRE CENTER FOR THE ARTS



Kgtunney Photography

PLAY YOUR PART, DISCOVER THE STATE




WWW.STATETHEATRE.INFO 724-439-1360




While exploring the Laurel Highlands, visit one of PA's most unique wineries. Our extensive wine list and picturesque setting will make for a memorable experience. Taste, shop and take time to relax on the garden patio.

Open year round, Tuesday-Saturday: 11am-6pm, Sunday: 12-5pm.
Closed Mondays and most holidays.





1085 CLAY PIKE ROAD, ACME, PA. 15610 724-423-5604 WWW.STONEVILLA.COM



WILDERNESS VOYAGEURS

the place to be in Ohiopyle

- Rafting (trips 3x daily)
- Bike Rentals & Trails
- FlyFishing Instruction
- SUP & Kayak Instruction
- Full Outfitter Store
- Expresso Bar
- Free WiFi
- Falls City Pub & Restaurant
- Over 50 microbrews!

We've got fun for everyone.

Wilderness-Voyageurs.com • 800-272-4141

OPEN YEAR ROUND

HERE WE GO!



HOME OF CHAMPIONS
Golf legend Arnold Palmer watched the world's first official airmail pickup in 1939 at the region's airport in his hometown of Latrobe. Today, the airport bears his name.

NOT-TO-MISS



THE KECKSBURG UFO INCIDENT
On Dec. 9, 1965, Kecksburg residents reported that a fireball streaked through the sky and then an object showing up in the woods. Today, the Laurel Highlands celebrates its paranormal past at the annual Kecksburg UFO Festival. Was it aliens, a meteor, or something else entirely? We may never know.



READY FOR YOUR FUTURE

Whatever your dreams, Saint Vincent College is ready to prepare you for a successful future.

- Top-ranked academic quality in more than 50 majors, 60 minors, plus pre-law and pre-med
- Merit Scholarships of up to \$21,000 in renewable awards
- 100 percent of freshmen receive financial aid.
- Catholic, Benedictine values instilled in and out of the classroom



SAINT VINCENT COLLEGE
Latrobe, Pa. | www.stvincent.edu

QUALITY EDUCATION IN THE BENEDICTINE TRADITION

2765

GREAT ALLEGHENY PASSAGE

150 MILES OF SPECTACULAR!



TrailGuide
Enjoy spectacular scenery along the GREAT ALLEGHENY PASSAGE with C&O CANAL TOWNSHIP

PLAN YOUR TRIP AT WWW.GAPTRAIL.ORG/TRAILGUIDE



Holiday Inn Express & Suites - Donegal
AN IHG® HOTEL

If you're looking for a Laurel Highlands hotel surrounded by great attractions, look no further than the

Holiday Inn Express & Suites - Donegal



3695 State Route 31
Donegal, PA 15628
724-593-1881
www.hiexpress.com



Affordable Family Fun!


May - September

www.Jennerstown.org

814-703-8009 Kids 12 and under free for all Racing Events




JENNERSTOWN
SPEEDWAY COMPLEX LLC
206 Somerset St Jennerstown, PA 15547



West Overton Village

109 W. Overton Road
Scottsdale, PA 15683
info@westovertonvillage.org
724-887-7910

Preserved Industrial Village of The Overholt Family

Experience an outstanding example of a 19th century rural industrial village. Guided tours and educational programming available for groups of all sizes and age ranges.

facebook.com/westovertonvillage

THEIR STORY LIVES ON



Visit Flight 93 National Memorial and learn about the inspiring story of the 40 passenger and crew members. Located 1.5 hours from Pittsburgh in the Laurel Highlands.

JOIN TODAY



FRIENDS OF FLIGHT 93
NATIONAL MEMORIAL
www.flight93friends.org




Hilton Garden Inn
Uniontown, PA

THE garden
GRILLE & BAR









555 Synergy Drive · Uniontown PA · 15401
Phone: 724.434.7200
www.uniontown.hgi.com



RAMADA
Ligonier

BISTRO
Ligonier


216 W Loyalhanna St, Ligonier PA - 15658
Phone: (724)238-9545
www.ramadaligonier.com



LEAF
PEEPING



COVERED
BRIDGES

All roads lead **Uptown**



This is Somerset. Exit 110 off the Turnpike. Enjoy restaurants, shops, festivals and historic charm. somersetinc.org



Explore The Westmoreland's broad permanent collection of painting, sculpture and decorative arts by notable American artists. Plus, experience compelling featured exhibitions of American art, and enjoy the Museum Shop and Café Marchand.

Admission is now free.

**THE WESTMORELAND
MUSEUM of AMERICAN ART**

221 North Main Street
Greensburg, PA 15601
724.837.1500
thewestmoreland.org

Enjoy Unique and Unforgettable Experiences at **SanaView Farms** our 52-acre Historic Landmark Organic Farm

Rustic Elegance at its Finest

Nestled in the heart of the Laurel Mountains, just 3 miles from the PA Turnpike, SanaView Farms is your perfect Laurel Highlands destination.

Experience Mother Nature's Finest

Join us for natural and organic special events including farm to table dinners, weddings, festivals, wellness and corporate retreats, and more!

To learn more about all that we have to offer, please visit sanaviewfarms.com.

Special Events
Farm to Table Dinners
Festivals
Retreats
Overnight Stays
Weddings

280 Roaring Run Road
Champion PA, 15622
sanaviewfarms.com
info@sanaview.com
724-417-6695



LATROBE ART CENTER

Located in the heart of downtown Latrobe, Latrobe Art Center provides a welcoming atmosphere for children and adults of all skill levels to grow their artistic talents and interests.



latrobeartcenter.org
819 Ligonier Street
Latrobe, PA 15650
724-972-7396

OPEN 7 DAYS A WEEK 10AM-7PM

Spunky Monkey
Fun Center & Party Place

6 Oliver Rd., Uniontown, PA 15401 • 724-970-2222

- Giant 3-Level Play Gym
- Toddler Play Area
- BEAM Interactive Game Floor
- Jungle Express Train
- Arcade Games
- Food Galley
- Private Party Rooms
- NOW OPEN 7 DAYS A WEEK!

Book Your Birthday Party With Us 9,000 Sq. Ft. of FUN!

W GROUP
TO RENT. TO BUY. TO LOVE.

Take a trip to the mountains and stay at one of our luxury vacation rentals at Seven Springs! From large groups to small family weekends, we can accommodate groups from 2-40+, we have a rental that will fit your needs!

wgroupholdings.com/vacation-rentals

Receive a \$50 resort credit if you mention this ad when booking!



LAUREL HIGHLANDS RIVER TOURS & OUTDOOR CENTER

Laurel Highlands Outdoor Center offers rafting for all ages and skill levels! Try mountain biking, rock climbing, zip-lining and more. Lodging options include charming guest houses, camping, and cabin rentals.



laurelhighlands.com
4 Sherman Street
Ohiopyle, PA 15470
724-329-8531



LAURELVILLE

Re-connect, refresh and renew. Flexible day & stay packages. Accommodations for 400+. Meeting & recreation spaces. 30 Minutes to skiing. New outdoor pool. Delicious meals. Warm hospitality.



laurelville.org
941 Laurelville Lane
Mount Pleasant, PA 15666
724-423-2056



MOUNTAIN LAUREL

Pennsylvania's state flower, mountain laurel, is abundant in the Laurel Highlands! The shrub keeps its foliage year-round, but keep an eye out in May and June for umbrella-like flowers that range in color from white to pink, with unique purple markings.

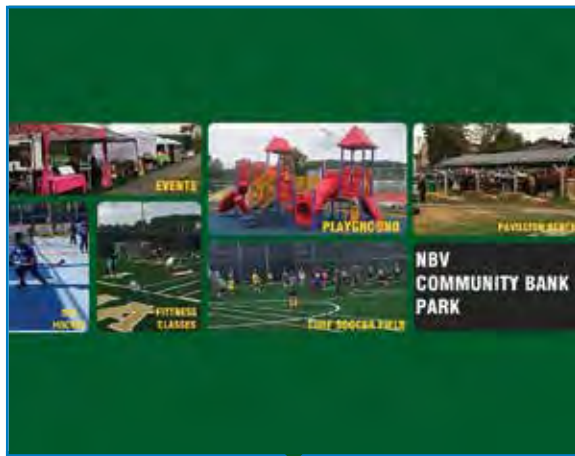


LINCOLN HIGHWAY EXPERIENCE

Lincoln Highway Experience. We are the museum worth pulling over for. By coming inside and experiencing the Lincoln Highway, you'll be inspired to go outside and ride this historic route.



LHHC.org
3435 State Route 30 East
Latrobe, PA 15650
724-879-4241



NORTH BELLE VERNON COMMUNITY BANK PARK

NBV Community Bank Park is an outdoor recreational facility. It includes a playground equipped for those living with physical limitations, a dek hockey court, turf soccer field, and pavilion rentals.

North Belle Vernon
Community Bank Park

Nbvpark.com
720 Graham Street
North Belle Vernon, PA 15012
724-929-6930



Compass Inn Museum

Restored 19th Century Stagecoach Stop
1382 Route 30, East, Laughlintown, PA 15655
724.238.4983 • www.compassinn.org



Get your seats to one of 100+ performances featuring nationally renowned celebrities, bands and touring shows at our historic performing arts venue located in Greensburg's Cultural District.
THE PALACE THEATRE
724-836-8000
21 W. Otterman St., Greensburg, PA 15601
www.ThePalaceTheatre.org



CHALLENGE PROGRAM AT SAINT VINCENT COLLEGE

CP@SVC, academic immersions, theme-based, evening events, 5th-12th grade overnight experience. Prek-4th daily theme based, hands on activities. Make life long friends and enjoy new experiences.



stvincentchallenge.org
Saint Vincent College
300 Fraser Purchase Road
Latrobe, PA 15650
724-805-2981



DISALVO'S STATION RESTAURANT

Located in an architecturally spectacular 1903 built Pennsylvania Railroad Station that is a nationally registered historic landmark. DiSalvo's Station offers a magnificent culinary experience.



disalvosrestaurant.com
325 McKinley Avenue
Latrobe, PA 15650
724-539-0500



WESTMORELAND ARTS & HERITAGE FESTIVAL

The Westmoreland Arts & Heritage Festival takes place annually at Twin Lakes Park. Enjoy music, crafts, ethnic food, a fine art exhibit, children's activities and so much more.



artsandheritage.com
252 Twin Lakes Road
Latrobe, PA 15650
724-834-7474



HAMPTON BY HILTON GREENSBURG

Award winning hotel-centrally located near Fort Ligonier, Idlewild Amusement Park, St. Vincent Steelers Camp, Seton Hill University and The Palace Theatre.



gbgpa.hampton@hilton.com
1000 Towne Square Drive
Greensburg, PA 15601
724-838-8800



LADY LUCK CASINO NEMACOLIN

If you're looking for an escape, visit Lady Luck Nemacolin, your destination for hot gaming action, delicious dining, and great giveaways, all located here in the Laurel Highlands. Gambling Problem? Call 1-800-GAMBLER.



ladylucknemacolin.com
4067 National Pike, Route 40
Farmington, PA 15437
724-329-7500



OLD GENERAL STORE

Specializing in old time products in a unique setting that takes you back to days gone by.



oldgeneralstore.com
300 Bessemer Road, Mount Pleasant, PA 15666
3822 Route 31, Donegal, PA 15628
724-547-7112



SOMERSET HISTORICAL CENTER

Discover what life was like throughout southwestern Pennsylvania's history, from our earliest settlements to the present day.



SomersetHistoricalCenter.org
10649 Somerset Pike
Somerset, PA 15501
814-445-6077



SUMMERSOUNDS

SummerSounds presents free concerts featuring nationally recognized touring artists every Friday in June, July, and August at 7pm. It's about the music!



summersounds.com
135 North Maple Avenue
Greensburg, PA 15601
724-837-1851



SUNSHINE LUGGAGE SHUTTLE

Traveling the GAP or C&O? Let us make your ride easy and worry-free by letting us carefully & safely transfer your luggage. We have done this with excellence since 2012.



sunshineluggage shuttle.com
259 Park Street
Confluence, PA 15424
814-279-5333



THE LODGE AT CHALK HILL

Relaxing lodging in a mountain setting overlooking lake or woods. Near Christian W. Klay Winery, Fallingwater, Kentuck Knob, Whitewater rafting, hiking biking at Ohiopyle State Park and more! Dog friendly.

**The Lodge
at Chalk Hill**

thelodgeatchalkhill.com
2920 National Pike
Chalk Hill, PA 15421
724-438-8880



WHITE WATER ADVENTURERS

The best Ohiopyle rafting trips start here! White Water Adventurers is the premier adventure outfitter in Ohiopyle, PA.



wwraft.com
6 Negley Street
Ohiopyle, PA 15470
724-329-8850



YOUGH PLAZA MOTEL

Located in the heart of Ohiopyle, this cozy motel is the perfect base for visiting Laurel Highlands region destinations.



youghplazamotel.com
28 Sherman Street
Ohiopyle, PA 15470
800-992-7238





**BECAUSE YOU LOVE
TO SEE THEM
SMILE**

VOTED BEST KIDS' PARK IN THE WORLD!

IDLEWILD.COM

LOCATED ON ROUTE 30, TWO MILES WEST OF LIGONIER, PA. | 724-238-3666

Parks

LOCAL PARKS

Dunlap Creek Park

FC | Off Route 40
Uniontown, PA 15401
co.fayette.pa.us/ParksandTrails/
pages/Dunlap

Jacobs Creek Park

FC | Mudd School Road
Mount Pleasant, PA 15666
co.fayette.pa.us/ParksandTrails/
pages/JacobsCreek

Masontown German Park

FC | Off Route 21
Masontown, PA 15461
co.fayette.pa.us/ParksandTrails/
pages/GermanMasontown

Youghiogheny River Lake

SC | 497 Flanigan Road
Confluence, PA 15424
814-395-3242
lrp.usace.army.mil/Missions/
Recreation/Lakes/Youghiogheny-
River-Lake

Cedar Creek Park

WC | 453 Evergreen Drive
Belle Vernon, PA 15012
724-830-3950
co.westmoreland.pa.us

Legion Keener Park

WC | 1658 Catherine Street
Latrobe, PA 15650
724-537-4331
latroberecreation.org

Mammoth Park

WC | 254 County Park Road
Mount Pleasant, PA 15666
724-830-3950
co.westmoreland.pa.us

North Belle Vernon

Community Bank Park
WC | 720 Graham Street
North Belle Vernon, PA 15012
724-929-6930
nbvpark.com

Northmoreland Park

WC | 280 Markle Road
Apollo, PA 15613
724-830-3950
co.westmoreland.pa.us

Twin Lakes Park

WC | 219 Twin Lakes Road
Latrobe, PA 15650
724-830-3950
co.westmoreland.pa.us

Conemaugh River Lake

INDIANA
1665 Auen Road, Suite A
Saltsburg, PA 15681
724-459-7420
lrp.usace.army.mil/
Missions/Recreation/Lakes/
ConemaughRiverLake

Loyalhanna Lake

INDIANA
440 Loyalhanna Dam Road
Saltsburg, PA 15681
724-639-9013
lrp.usace.army.mil/Missions/
Recreation/Lakes/Loyalhanna-Lake

STATE PARKS

Ohiopyle State Park

SC | 124 Main Street
Ohiopyle, PA 15470
724-329-8591
dcnr.state.pa.us/stateparks/
findapark/ohiopyle

Kooser State Park

SC | 943 Glades Pike
Somerset, PA 15501
814-445-8673
dcnr.state.pa.us/stateparks/
findapark/kooser

Laurel Hill State Park

SC | 1454 Laurel Hill Park Road
Somerset, PA 15501
814-445-7725
dcnr.state.pa.us/stateparks/
findapark/laurelhill

Laurel Ridge State Park

SC | 1117 Jim Mountain Road
Rockwood, PA 15557
724-455-3744
dcnr.state.pa.us/stateparks/
findapark/laurelridge

Keystone State Park

WC | 1150 Keystone Park Road
Derry, PA 15627
724-668-2939
dcnr.state.pa.us/stateparks/
findapark/keystone

Laurel Mountain State Park

WC | PO Box 50
Rector, PA 15677
724-238-6623
dcnr.state.pa.us/stateparks/
findapark/

Laurel Summit State Park

WC | Linn Run Rd
Somerset, PA 15501
724-238-6623
dcnr.state.pa.us/stateparks/
findapark/laurelsummit

Linn Run State Park

WC | 770 Linn Run Rd
Rector, PA 15677
724-238-6623
dcnr.state.pa.us/stateparks/find-
apark/linnrun

Forbes State Forest

WC/SC | 1291 Route 30
Laughlintown, PA 15655
724-238-1200
dcnr.state.pa.us/forestry/
stateforests/forbes

Gallitzin State Forest

OTHER | 155 Hillcrest Drive
Ebensburg, PA 15931
814-472-1862
dcnr.pa.gov/StateForests/
FindAForest/Gallitzin

NATIONAL PARKS

Fort Necessity

National Battlefield
FC | 1 Washington Parkway
Farmington, PA 15437
724-329-5805
nps.gov/fofne

Friendship Hill

National Historic Site

FC | 223 New Geneva Road
Point Marion, PA 15474
724-329-2501
nps.gov/frhi

Flight 93 National

Memorial
SC | 6424 Lincoln Highway
Stoystown, PA 15563
814-893-6322
nps.gov/flni

Allegheny Portage

Railroad National

Historic Site
CAMBRIA | 110 Federal Park Road
Gallitzin, PA 16641
814-886-6150
nps.gov/alpo

Johnstown Flood

National Memorial
CAMBRIA | 733 Lake Road
South Fork, PA 15956
814-886-6170
nps.gov/fofi

U.S. ARMY CORPS OF ENGINEERS

Youghiogheny River Lake

SC | 497 Flanigan Road
Confluence, PA 15424
814-395-3242
lrp.usace.army.mil/Missions/
Recreation/Lakes/Youghiogheny-
River-Lake

Conemaugh River Lake

INDIANA | 1665 Auen Road
Suite A
Saltsburg, PA 15681
724-459-7420
lrp.usace.army.mil/
Missions/Recreation/Lakes/
ConemaughRiverLake.aspx

Loyalhanna Lake

INDIANA | 440 Loyalhanna
Dam Road
Saltsburg, PA 15681
724-639-9013
lrp.usace.army.mil/Missions/
Recreation/Lakes/Loyalhanna-Lake

FRIENDS GROUPS

Friends of Flight 93

National Memorial
SC | 6424 Lincoln Highway
Stoystown, PA 15563
814-893-6322
flight93friends.org

Friends of Laurel Hill

State Park
SC | 1454 Laurel Hill Park Road
Somerset, PA 15501
814-445-7725
friendsoflhsp.org

Things To Do

ANIMAL PARKS

Nemacolin Woodlands

Resort's Wildlife Academy
FC | 1001 Lafayette Drive
Farmington, PA 15437
866-386-6957
nemacolin.com

Critter Country

Animal Farm
WC | 914 Route 981
Smithton, PA 15479
724-872-5988
crittercountryanimalfarm.com

Frank Lloyd Wright's

Kentuck Knob

FC | 723 Kentuck Road
Chalk Hill, PA 15421
724-329-1901
kentuckknob.com



TOUCHSTONE CENTER FOR CRAFTS

touchstonecrafts.org
1049 Wharton Furnace Rd
Farmington, PA 15437
724-329-1370

1-5 day immersive
craft workshops and
group retreats. Visit our
professional exhibition
galleries, tour our fully-
equipped studios from
June to October.

Laurel Arts

SC | 214 South Harrison Avenue
Somerset, PA 15501
814-443-2433
laurelarts.org

Foster and Muriel McCarl

Coverlet Gallery
WC | 300 Fraser Purchase Road
Latrobe, PA 15650
724-805-2569
mccarlgallery.org

Greensburg Art Center/

Rowe Gallery
WC | 230 Todd School Road
Greensburg, PA 15601
724-837-6791
greensburgartcenter.org

Latrobe Art Center

WC | 819 Ligonier Street
Latrobe, PA 15650
724-537-7011
latrobeartcenter.org

Painting With A Twist

WC | 1020-1 Towne Square Drive
Greensburg, PA 15601
724-221-6527
paintingwithatwist.com/studio/
greensburg

Southern Alleghenies

Museum of Art at
Ligonier Valley
WC | One Boucher Lane and
Route 711 South
Ligonier, PA 15658
724-238-6015
sama-art.org

The Westmoreland

Museum of American Art
WC | 221 North Main Street
Greensburg, PA 15601
724-837-1500
thewestmoreland.org

WCT's Art in the Alley

WC | Wilcox Way
Greensburg, PA 15601
724-836-1123
thepalacetheatre.
orgwestmoreland-cultural-trust/
art_alley

Arts Coalition of

the Alleghenies
CAMBRIA | c/o PA Rural
Arts Alliance
PO Box 9
Loretto, PA 15940
814-472-3927
artscpa.org

Bottle Works Arts

on Third Ave
CAMBRIA | 411 & 413 Third
Avenue
Johnstown, PA 15906
814-535-2020
bottleworks.org

ATTRACTIONS

Carnegie Free Library

of Connellsville
FC | 299 South Pittsburg Street
Connellsville, PA 15425
724-628-1380
carnegiefreeilib.org

Connellsville Canteen

& Cafe
FC | 131 West Crawford Avenue
Connellsville, PA 15425
724-603-2093
connellsvillecanteen.org

Laurel Caverns

FC | 1065 Skyline Drive
Farmington, PA 15437
724-438-3003
laurelcaverns.com

Nemacolin Woodlands

Resort's Adventure Center
FC | 1001 Lafayette Drive
Farmington, PA 15437
866-386-6957
nemacolin.com

Ohiopyle Mini Golf

WC | 28 Sherman Street
Ohiopyle, PA 15470
724-329-8850
wwraft.com

Ohiopyle Old Mill

General Store
FC | 4 Sherman Street
Ohiopyle, PA 15470
724-329-8531
laurelhighlands.com

Spunky Monkey

Fun Center
FC | 6 Oliver Road
Uniontown, PA 15401
724-970-2222
spunkymonkeyfuncenter.com

Walnut Hill

Miniature Golf
FC | 1285 Farm Road
Uniontown, PA 15401
724-437-3005
walnuthillminiaturegolf.com

Faranda Farm

SC | 1171 Penn Avenue
Hollsopple, PA 15935
814-479-7109
farandasfamilyfarm.com

Jake's Mini Golf

SC | 1554 North Center Avenue
Somerset, PA 15501
814-701-2772
jakesminigolf.com

Laurel Highlands

Model Railroad Club
SC | 216 West Main Street
Somerset, PA 15501
814-445-8922
lhmr.org

Terrace Lanes

Bowling Center
SC | 194 Revco Road
Somerset, PA 15501
814-445-3539
terrancelanes.net

Battlezone Latrobe

WC | 1025 Latrobe 30 Plaza
Latrobe, PA 15650
724-804-5136
battlezonelatrobe.com

Caddie Shak

WC | 132 Caddie Shak Road
Donegal, PA 15628
724-593-7400
caddieshak.com

Evergreen Drive-In

Theatre
WC | 309 Drive-In Lane
Mount Pleasant, PA 15666
724-547-4747
evergreendrivein.com

Hot Shots Indoor

Sports Arena
WC | 482 Bessemer Road
Mount Pleasant, PA 15666
724-547-5700
hotshotsarena.com

Idlewild and SoakZone

WC | Route 30 East
Ligonier, PA 15658
724-238-3666
idlewild.com

SeaBase Family Fun Center

WC | 770 East Pittsburgh Street
Greensburg, PA 15601
724-838-8887
seabasefun.com

Statler's Fun Center

WC | 386 Frye Farm Road
Greensburg, PA 15601
724-539-7655
statlers.com

BREWERIES & DISTILLERIES

Ridge Runner Distillery

FC | 417 Fayette Springs Road
Chalk Hill, PA 15421
724-434-6659
ridgerunnerdistillery.com

Tall Pines Distillery

SC | 9224 Mason Dixon Highway
Salisbury, PA 15558
814-442-2245
tallpinesdistillery.com

Whitehorse Brewing

SC | 824 Diamond Street
Berlin, PA 15530
814-279-8761
whbrewing.com

KEY TO
LISTINGS

WC Westmoreland County
FC Fayette County
SC Somerset County



CONCERTS, MUSIC & THEATRES

State Theatre Center

for the Arts
FC | 27 East Main Street
Uniontown, PA 15401
724-439-1360
statetheatre.info



MOUNTAIN PLAYHOUSE

mountainplayhouse.org
7690 Somerset Pike
Jennerstown, PA 15547
814-629-9220

Enjoy live professional
Equity theater June-
October in a charming and
historic lakeside setting.
A season of musicals,
comedies, dramas and
farces since 1939.
Air-conditioned.
Groups welcome.



ROCKWOOD MILL SHOPPES & OPERA HOUSE

rockwoodmillshoppes.com
450 Main Street
Rockwood, PA 15557
814-926-4546

Browse our selection
of American made
products, local artisans.
and antiques. Try our
fresh dough pizza, bakery
items and dairy ice cream.
Attend entertainment in
the restored Opera House.

The Arcadia Theater

SC | 1418 Graham Avenue
Windber, PA 15963
814-467-9070
arcadiawindber.com

Freeport Theatre Festival

WC | 2498 White Cloud Road
Leechburg, PA 15656
724-295-1934
freeporttheatrefestival.org

Latshaw Productions

WC | 21 West Otterman Street,
Suite 2
Greensburg, PA 15601
724-853-4050
latshawproductions.com

Stage Right!

WC | 105 West Fourth Street
Greensburg, PA 15601
724-832-7464
stagerightgreensburg.com

The Geyer Performing

Arts Center
WC | 111 Pittsburgh Street
Scottsdale, PA 15683
724-887-0887
geyerpac.com

The Lamp Theatre

WC | 222 Main Street
Irwin, PA 15642
724-367-4000
lamptheatre.org

The Palace Theatre

WC | 21 West Otterman Street
Greensburg, PA 15601
724-836-8000
thepalacetheatre.org

Westmoreland Symphony

Orchestra
WC | 951 Old Salem Road
Greensburg, PA 15601
724-837-1850
westmorelandsymphony.org

Pasquerilla Performing

Arts Center
CAMBRIA | 450 Schoolhouse Road
Johnstown, PA 15904
814-269-7200
upjarts.org



Somerset County Maple Producers Association
SC | 234 Sugar Cake Road
Somerset, PA 15501
814-442-3680
somersetcountymaple.org

Friendship Farms
WC | 147 Friendship Farms Lane
Latrobe, PA 15650
724-423-8727
friendshipfarms.com

Leeper Meats
WC | 260 Harr Road
Acme, PA 15610
724-454-0873
leepermeats.com

SanaView Farms
WC | 280 Roaring Run Road
Champion, PA 15622
724-417-6695
sanaview.com

Sand Hill Berries
WC | 304 Deerfield Road
Mount Pleasant, PA 15666
724-547-4760
sandhillberries.com

Schramm Farms & Orchards
WC | 1002 Blank Road
Jeannette, PA 15644
724-744-7320
schrammfarms.com

HAUNTED ATTRACTIONS

Haunted Hollow
SC | 126 Woodland Road
Rockwood, PA 15557
814-926-3133
hauntedhollow.net

Idlewild's HALLOWBOO!
WC | Route 30 East
Ligonier, PA 15658
724-238-3666
idlewild.com

Lonesome Valley Farms
WC | 180 Fairgrounds Road
Greensburg, PA 15601
724-423-4290
lonesomevalleyfarms.com

HISTORIC SITES & MUSEUMS

BARC Flatiron Building Heritage Museum & Visitor Center
FC | 69 Market Street
Brownsville, PA 15417
724-785-9331
barcpa.org

Coal & Coke Heritage Center
FC | 2201 University Drive
Lemont Furnace, PA 15456
724-430-4158
fayette.psu.edu/coalandcoke

Connellsville Area Historical Society and Museum
FC | 217 West Patterson Avenue
Connellsville, PA 15425
724-628-5344
connellsvillehistoricalsociety.com

Dunbar Historical Society
FC | 42 Bridge Street
Dunbar, PA 15431
724-277-8800
dunbarhistoricalsociety.com

Fayette County Historical Society
FC | Abel Colley Tavern, 7083
National Pike Road
Smock, PA 15480
724-439-4422
fayettehistoricalsociety.org

Fort Necessity National Battlefield
FC | 1 Washington Parkway
Farmington, PA 15437
724-329-5805
nps.gov/fone

Friendship Hill National Historic Site
FC | 223 New Geneva Road
Point Marion, PA 15474
724-329-2501
nps.gov/frhi

Nemacolin Castle
FC | 136 Front Street and
Brashear Street
Brownsville, PA 15417
724-785-6882
nemacolincastle.net

Smock Historical Society
FC | 1083 Cross Creek Drive
Uniontown, PA 15401
724-677-4660
orgsites.compa/smock

Flight 93 National Memorial
SC | 6424 Lincoln Highway
Stoystown, PA 15563
814-893-6322
nps.gov/flni

Mary S. Biesecker Public Library
SC | 230 South Rosina Avenue
Somerset, PA 15501
814-445-4011
maryslibrary.com

Meyersdale Area Historical Society
SC | 527 Main Street
Meyersdale, PA 15552
814-634-8654
meyersdaleahs.com

Quecreek Mine Rescue Site
SC | 140 Haupt Road
Somerset, PA 15501
814-445-5090
quecreekrescue.org

Somerset County Flag Committee
SC | 215 Ramada Road
Somerset, PA 15501
814-444-0637
somersetflag.org

Somerset Historical Center
SC | 10649 Somerset Pike
Somerset, PA 15501
814-445-6077
somersethistoricalcenter.org

Springs Museum & Farmers Market
SC | 1711 Springs Road
Springs, PA 15562
814-442-4594
springspa.org

Turkeyfoot Valley Historical Society
SC | 600 Logan Place
Confluence, PA 15424
814-395-5415
tvhs.com

Antiochian Heritage Museum
WC | Route 711 North of Ligonier,
140 Church Camp Trail
Bolivar, PA 15923
724-238-3677
antiochianvillage.org

Baltzer Meyer Historical Society
WC | 642 Baltzer Meyer Pike
Greensburg, PA 15601
724-836-6915
baltzermeyer.com

Bushy Run Battlefield
WC | 1253 Bushy Run Road
Jeannette, PA 15644
724-527-5584
bushyrunbattlefield.com

Compass Inn Museum
WC | 1382 Route 30 East
Laughlintown, PA 15655
724-238-4983
compassinn.org

DiSalvo's Station Restaurant
WC | 325 McKinley Avenue
Latrobe, PA 15650
724-539-0500
disalvosrestaurant.com

Fort Ligonier
WC | 200 South Market Street
Ligonier, PA 15658
724-238-9701
fortligonier.org

Greater Monessen Historical Society & Museum
WC | 505 Donner Avenue
Monessen, PA 15062
724-684-8460
monessenhistoricalsociety.com



HISTORIC HANNA'S TOWN

westmorelandhistory.org
809 Forbes Trail Road
Greensburg, PA 15601
724-836-1800

Guided tours reveal how the struggles, decisions, and events on the frontier reflect America's Revolution. Hosted first English courts west of Allegheny Mountains. Destroyed by Seneca and British July 1782.

Ligonier Valley Rail Road Museum
WC | 3032 Idlewild Hill Lane
Ligonier, PA 15658
724-238-7819
lvrra.org

Lincoln Highway Experience
WC | 3435 State Route 30 East
Latrobe, PA 15650
724-879-4241
LHHC.org

Saint Vincent Basilica
WC | 300 Fraser Purchase Road
Latrobe, PA 15650
724-539-8629
basilicaparishstv.org

Saint Vincent Gristmill & General Store
WC | 300 Fraser Purchase Road
Latrobe, PA 15650
724-537-0304
saintvincentgristmill.com

West Overton Village and Museum
WC | 109 West Overton Road
Scottdale, PA 15683
724-887-7910
westovertonvillage.org

Rivers of Steel National Heritage Area
ALLEGHENY | Rivers of Steel
Visitor Center @ The Bost
Building, 623 East Eighth Avenue
Homestead, PA 15120
412-464-4020
riversofsteel.com

Allegheny Ridge Heritage Area/Allegheny Ridge Corporation
BLAIR | PO Box 348
Altoona, PA 16603
814-940-1922
alleghenyridge.org

Allegheny Portage Railroad National Historic Site
CAMBRIA | 110 Federal
Park Road
Gallitzin, PA 16641
814-886-6150
nps.gov/alpo



JOHNSTOWN HERITAGE DISCOVERY CENTER

jaha.org

201 Sixth Avenue
Johnstown, PA 15906
814-539-1889

Explore the Children's Museum, learn about our region's industrial past, or become an immigrant from 100 years ago - all at the Heritage Discovery Center.



JOHNSTOWN FLOOD MUSEUM

jaha.org

304 Washington Street
Johnstown, PA 15901
814-539-1889

Relive the tragedy and triumph of the 1889 Johnstown Flood, one of America's greatest disasters, through exhibits and an Academy-Award-winning film.

Johnstown Flood National Memorial
CAMBRIA | 733 Lake Road
South Fork, PA 15956
814-886-6170
nps.gov/jofl

Johnstown Inclined Plane
CAMBRIA | 711 Edgehill Drive
Johnstown, PA 15905
814-536-1816
inclinedplane.org

SHOOTING RANGES

A & S Indoor Pistol Range
WC | 617 Overhead Bridge Road
Youngwood, PA 15697
724-925-1212
indoorpistolrange.com

SPAS & WELLNESS

Jenny Dayton Yoga
FC | Uniontown, PA
724-550-3661
mountainyogashala.com

Nemacolin Woodlands Resort's Spa Collection
FC | 1001 Lafayette Drive
Farmington, PA 15437
866-386-6957
nemacolin.com

Trillium Spa at Seven Springs Mountain Resort
SC | 777 Waterwheel Drive
Seven Springs, PA 15622
800-452-2223
7springs.com

Everyday Therapeutics Massage
WC | 106 North St Clair Street
Ligonier, PA 15658
724-238-2322
everydaytherapeuticsmassage.com

Turning Point Energy (Energy Healer)
WC | 371 Bethel Church Road
Ligonier, PA 15658
724-635-3658
724-493-6764
turningpointenergy.org

Himalayan Salt Spa & Cave
OTHER | 15630 North Preston
Highway
Bruceton Mills, WV 26525
304-379-7000
brucetonwellness.com/himalayan-salt-cave

SPEEDWAYS

Jennerstown Speedway Complex
SC | 206 Somerset Street
Jennerstown, PA 15547
814-703-8009
jennerstown.org

SUMMER CAMPS

Camp Christian
FC | 472 Killarney Road
Mill Run, PA 15464
724-455-2700
camp-christian.org

Camp Harmony
SC | 1414 Plank Road
Hooversville, PA 15936
814-798-5885
campharmony.org

Summer's Best Two Weeks
SC | 111 Lake Gloria Road
Boswell, PA 15531
814-629-9744
sb2w.org

Challenge Program at Saint Vincent College
WC | 300 Fraser Purchase Road
Latrobe, PA 15650
724-805-2981
stvincentschallenge.org



LAURELVILLE

laurelville.org
941 Laurelville Lane
Mount Pleasant, PA 15666
724-423-2056

A Christian Camp and Retreat Center. Re-connect, Refresh and Renew. Come for the day, or stay overnight. NEW OUTDOOR POOL!

WINERIES

Christian W. Klay Winery
FC | 412 Fayette Springs Road
Chalk Hill, PA 15421
724-439-3424
cwklaywinery.com



SOUTHWEST PASSAGE WINE TRAIL

southwestpassagewinetrail.com
8 Wineries across the Region
Chalk Hill, PA 15421
724-439-3424

The premier Wine Trail of the Laurel Highlands with each winery offering something unique just for you! For events and specials go to: southwestpassagewinetrail.com
Do The Trail!

Winslow Winery
FC | 42 Pine Lane
Perryopolis, PA 15473
724-880-3474
winslowwinery.com

Fine Wines & Winemaking
SC | 1801 Stockholm Avenue
Windber, PA 15963
814-467-6765
finewinesofwindber.com



GLADES PIKE WINERY

gladespikewinery.com
2208 Glades Pike
Somerset, PA 15501
814-445-3753

Nestled in the beautiful Laurel Highlands of PA near Seven Springs & Hidden Valley Resorts. With wine tastings, tours, & year-round events, there's plenty to do. Come visit us today!

Vin De Matrix Winery
SC | 307 Kings Mt Road
Suite 101
Rockwood, PA 15557
814-926-2009
vindematrixwine.com

Arrowhead Wine Cellars at Schramm Farms & Orchards
WC | 1002 Blank Road
Jeannette, PA 15644
724-744-7320
schrammfarms.com

Bella Terra Vineyards
WC | 121 Sunny Lane
Hunker, PA 15639
724-635-3658
bellaterravineyards.com

Greendance - The Winery at Sand Hill
WC | 306 Deerfield Road
Mount Pleasant, PA 15666
724-547-6500
greendancewinery.com

Greenhouse Winery
WC | 2155 Gracin Lane, GPS
Address: 1048 Pinewood Road
Irwin, PA 15642
724-446-5000
greenhousewinery.com

Laurel Highlands Meadery
WC | 106 4th Street
Irwin, PA 15642
724-249-6323
laurelhighlandsmeadery.com

Stone Villa Wine Cellars
WC | 1085 Clay Pike Road
Acme, PA 15610
724-423-5604
stonevilla.com

Tattiebogle CiderWorks
WC | 175 Ankney Hill Road
Acme, PA 15610
724-424-2437
tattiebogleciderworks.com

Vinoski Winery
WC | 333 Castle Drive
Rostraver, PA 15012
724-872-3333
vinoskiwinery.com

Outdoors

ATV PARKS

Mountain Ridge Trails Resort
SC | 517 Boone Road
Central City, PA 15926
814-279-3147
mountainridgeatvtrails.com

BIKING

Laurel Highlands River Tours & Outdoor Center
FC | 4 Sherman Street
Ohiopyle, PA 15470
724-329-8531
laurelhighlands.com

Noble Invention Bike Touring
FC | 1049 Penn Avenue
Pittsburgh, PA 15222
844-424-5342
nobleinventionbiketouring.com
combike-trips/great-allegheny-passage

White Water Adventurers
FC | 6 Negley Street
Ohiopyle, PA 15470
724-329-8850
wwarft.com

Wilderness Voyageurs
FC | 103 Garrett Street
Ohiopyle, PA 15470
724-329-1000
wilderness-voyageurs.com

Confluence Cyclery
SC | 500 Hughart Street
Confluence, PA 15424
814-395-9380
confluencecylery.com

GAPmap
SC | 522 Handwerk Road
Markleton, PA 15551
814-279-1241
getgapmap.com

Laurel Highlands Hiking Trail
SC | 1117 Jim Mountain Road
Rockwood, PA 15557
724-455-3744
dcnr.state.pa.us/stateparks/findapark/laurelridge

Maple Leaf Outfitters, LLC
SC | PO Box 86
Meyersdale, PA 15552
814-701-8080
mapleleafoutfitters.net

Rock City Shuttles
SC | 125 Rockdale Road
Rockwood, PA 15557
814-926-6253
rockcityshuttles.com

September 11th National Memorial Trail Alliance
SC | Po Box 308
New Eagle, PA 15067
412-559-0806
911trail.org

Seven Springs Mountain Resort
SC | 777 Waterwheel Drive
Seven Springs, PA 15622
800-452-2223
7springs.com

Sunshine Luggage Shuttle
SC | 259 Park Street
Confluence, PA 15424
814-279-5333
sunshineluggage shuttle.com

Great Allegheny Passage
WC | West Newton Visitors
Center, 111 Collinsburg Road
West Newton, PA 15089
814-445-5200
gaptrail.org

West Newton Station
WC | 111 Collinsburg Road
West Newton, PA 15089
724-872-5586
regionaltrailcorp.org

Pittsburgh-to-Harrisburg Main Line Canal Greenway/Allegheny Ridge Corporation
BLAIR | PO Box 348
Altoona, PA 16603
814-940-1922
mainlinecanalgreenway.org

FISHING

Nemacolin Woodlands Resort's Orvis® Fly Fishing Lodge
FC | 321 Pike School Road
Markleysburg, PA 15459
724-329-6770
nemacolin.com

Wilderness Voyageurs
FC | 103 Garrett Street
Ohiopyle, PA 15470
724-329-1000
wilderness-voyageurs.com

Laurel Hill Trout Pond
SC | 4283 Route 31 West
Jones Mills, PA 15628
724-593-7101
laurelhilltroutpond.com

GOLF

Nemacolin Woodlands Resort
FC | 1001 Lafayette Drive
Farmington, PA 15437
866-386-6957
nemacolin.com

Pleasant Valley Golf Club
FC | 440 Pleasant Valley Road
Connellsville, PA 15425
724-628-6360
pleasantvalleygolf.com

Hidden Valley Golf Club
SC | 1 Craighead Drive
Hidden Valley, PA 15502
814-443-8000
hiddenvalleysresort.com

Northwinds Golf Course at Indian Lake Resort
SC | 701 South Shore Trail
Central City, PA 15926
814-754-4653
northwindsgolf.com

Northwinds Peninsula Golf Club
SC | 1772 Peninsula Drive
Central City, PA 15926
814-754-3461
northwindspeninsulaclub.com

Seven Springs Mountain Resort
SC | 777 Waterwheel Drive
Seven Springs, PA 15622
800-452-2223
7springs.com

Somerset Country Club
SC | 416 Plank Road
Somerset, PA 15501
814-445-5200
somersetcountryclub.com

Arnold Palmer's Latrobe Country Club
WC | 346 Arnold Palmer Drive
Latrobe, PA 15650
724-539-8585
latrobecountryclub.com

Champion Lakes Golf Club
WC | 4743 Route 711
Bolivar, PA 15923
724-238-5440
pagolf.com

Cloverleaf Golf Club
WC | 351 Cloverleaf Drive
Delmont, PA 15626
724-468-4173
golfnpa.com

Donegal Highlands Golf Course
WC | 141 Clay Pike Road
Acme, PA 15610
724-423-7888
donegalhighlandsgolf.com



WC Westmoreland County
FC Fayette County
SC Somerset County



Glengarry Golf Links

WC | 168 Lentz Road
Latrobe, PA 15650
724-423-4653
golfglengarry.com

Totteridge Golf Course & Community

WC | 325 Hannastown Road
Greensburg, PA 15601
724-837-6700
totteridge.com

Chestnut Ridge Golf Resort

INDIANA | 132 Pine Ridge Road
Blairsville, PA 15717
724-459-7191
chestnutridgeresort.com

HUNTING

Nemacolin Woodlands Resort's Shooting Academy

FC | 321 Pike School Road
Markleysburg, PA 15459
724-329-6770
nemacolinfieldclub.com

Buffer Creek Sporting Clays

SC | 252 Schoolhouse Road
Somerset, PA 15501
814-443-3141
buffercreeksportingclays.com

Seven Springs Mountain Resort Sporting Clays

SC | 777 Waterwheel Drive
Seven Springs, PA 15622
800-452-2223
7springs.com

NATURE RESERVES & GARDENS

Powdermill Nature Reserve

WC | 1795 Route 381
Rector, PA 15677
724-593-4070
carnegiemn.org/powdermill

Winnie Palmer Nature Reserve at Saint Vincent College

WC | 744 Walzer Way
Latrobe, PA 15650
724-537-5284
wprn.org

ROCK CLIMBING

Laurel Highlands River Tours & Outdoor Center

FC | 4 Sherman Street
Ohiopyle, PA 15470
724-329-8531
laurelhighlands.com

Wilderness Voyageurs

FC | 103 Garrett Street
Ohiopyle, PA 15470
724-329-1000
wilderness-voyageurs.com

SKIING & WINTER SPORTS

Nemacolin Woodlands Resort

FC | 1001 Lafayette Drive
Farmington, PA 15437
866-386-6957
nemacolin.com

Hidden Valley Resort

SC | 1 Craighead Drive
Hidden Valley, PA 15502
814-443-8000
hiddenvalleysort.com

Route 31 Bike, Board & Ski

SC | 3731 Glades Pike
Somerset, PA 15501
814-443-1282
route31boardandski.com

Seven Springs Mountain Resort

SC | 777 Waterwheel Drive
Seven Springs, PA 15622
800-452-2223
7springs.com

Laurel Mountain

WC | 201 Summit Ski
Boswell, PA 15531
laurelmountainski.com

WATER SPORTS & WHITEWATER RAFTING

Laurel Highlands River Tours & Outdoor Center

FC | 4 Sherman Street
Ohiopyle, PA 15470
724-329-8531
laurelhighlands.com

Ohiopyle Trading Post & River Tours

FC | 4 Negley Street
Ohiopyle, PA 15470
724-329-1450
ohiopyletradingpost.com

White Water Adventurers

FC | 6 Negley Street
Ohiopyle, PA 15470
724-329-8850
wwaraft.com

Wilderness Voyageurs

FC | 103 Garrett Street
Ohiopyle, PA 15470
724-329-1000
wilderness-voyageurs.com

Hazelbaker Boat & Bike Rental at Laurel Hill State Park

SC | Laurel Hill State Park
Laurel Hill Park Road
Somerset, PA 15501
814-233-6075
hazelbakercanoes.com

The Stonycreek River

SC | Stonycreek-Quemahoning Initiative
Johnstown, PA 15907
814-659-3465
thestonycreek.com

Pasternak Recreational Area

WC | 102 Railroad Avenue
Avonmore, PA 15618
724-388-2123

Performance Kayak

WC | 724-987-3597
performance-kayak.com

Kiski-Conemaugh Water Trail

BLAIR | PO Box 348
Altoona, PA 16603
814-940-1922
mainlinecanalgreenway.org

Coal Tubin'

CAMBRIA | 416 Main Street
Johnstown, PA 15901
814-254-4393
coaltubin.com

ZIP LINING

Nemacolin Woodlands Resort

FC | 1001 Lafayette Drive
Farmington, PA 15437
866-386-6957
nemacolin.com

Ohiopyle Zip Line Adventure Park at Laurel Highlands River Tours & Outdoor Center

FC | 4 Sherman Street
Ohiopyle, PA 15470
724-329-8531
laurelhighlands.com

Laurel Ridgeline Zipline

Tours at Seven Springs
SC | 777 Waterwheel Drive
Seven Springs, PA 15622
800-452-2223
7springs.com

Shopping

ANTIQUES

Crown Antique Mall

FC | 1710 Mall Run Road
Uniontown, PA 15401
724-550-4104
crownantiquemall.com

Henry Antiques & Flea Market

SC | 139 Trent Road
Friedens, PA 15541
814-701-1388

Mill Shoppe Antiques at Rockwood Mill Shoppes

SC | 450-500 Main Street
Rockwood, PA 15557
814-926-4546
rockwoodmillshoppes.com

Sugar Grove Antiques

SC | 309 Georgian Place
Somerset, PA 15501
814-445-3161

The Silver Penny Vintage Shop

WC | 3919 PA-31
Jones Mills, PA 15646
724-593-2090

FARMERS' MARKETS

Somerset County Farmers Market

SC | 800 Georgian Place Drive
Rear Parking Lot
Somerset, PA 15501
814-279-5620
somersetcountyfarmersmarket.com

Greensburg Farmers' Markets

WC | Lynch Field Park /
Downtown Greensburg
Greensburg, PA 15601
724-834-2334
sarverhillfarm.org

Ligonier Country Market

WC | Corner of West Main Street
& Springer Road
Ligonier, PA 15658
724-858-7894
ligoniercountrymarket.com

RETAIL & SPECIALTY

Frank Lloyd Wright's Fallingwater® Museum Store

FC | 1491 Mill Run Road
Route 381 South
Mill Run, PA 15464
724-329-8501
fallingwater.org

Miller's Greenhouses & Flower Shop

FC | 2886 Morgantown Road
Smithfield, PA 15478
724-564-2696
millersgreenhouses.com

Neubauer's Flowers & Market House

FC | 34 East Church Street
Uniontown, PA 15401
724-437-5500
neubauersflowers.com

Oddly Enough

FC | 15 Sherman Street
Ohiopyle, PA 15470
724-557-2125
oddlyenough.biz

Peddler's Mercantile

FC | 2310 Moyer Road
Connellsville, PA 15425
724-603-3150
peddlersmercantile.com

Pepperberries

FC | 129 West Main Street
Uniontown, PA 15401
724-430-0703
pepperberries.info

Uniontown Mall

FC | 1368 Mall Run Road
(Route 40)
Uniontown, PA 15401
724-437-9411
shopuniontownmall.com

Baker's Home & Garden Center

SC | 570 Berlin Plank Road
Somerset, PA 15501
814-445-7028
bakershgcc.com

Duppstadt's Country Store

SC | 6885 Lincoln Highway
Stoystown, PA 15563
814-754-4400
duppstadscountystore.com

Georgian Place

SC | 707 Georgian Place
Somerset, PA 15501
814-443-3818
georgianplace.net

Mayapple Marketplace

SC | 101 West Main Street
Stoystown, PA 15563
814-893-5350
mayapplemarket.com

Moo Echo Dairy

SC | 3671 Glades Pike
Somerset, PA 15501
814-445-6780

Rockwood Mill Shoppes & Opera House Shopping

SC | 450 Main Street
Rockwood, PA 15557
814-926-4546
rockwoodmillshoppes.com

Sechler Sugar Shack

SC | 7758 Kingwood Road
Confluence, PA 15424
814-395-3200
sechlersugarshack.com

Snyder of Berlin

SC | 1313 Stadium Drive
Berlin, PA 15530
814-267-4641
snyderoferlin.com

Betsy's of Ligonier

WC | 131 West Main Street
Ligonier, PA 15658
724-238-4770
facebook.com/Betsys-of-Ligonier

Celtic Culture

WC | 137 East Main Street
Ligonier, PA 15658
724-238-2420
celticcultureonline.com

Conte Design Lifestyle Gallery

WC | 113 East Main Street
Ligonier, PA 15658
724-238-4230
contedesign.net

Country Pie Shoppe

Donegal
WC | 3822 State Route 31
Donegal ,PA 15628
724-593-7105
countrypieshoppe.com

Country Pie Shoppe Mount Pleasant

WC | 6577 State Route 819
Mount Pleasant, PA 15666
724-547-7105
countrypieshoppe.com

Grandma's Country Oven Bake Shoppe

WC | 1004 Blank Road
Jeannette, PA 15644
724-744-9873
grandmascountryoven.com

Main Exhibit Gallery & Art Center

WC | 301 West Main Street
Ligonier, PA 15658
724-238-2310
mainexhibitgallery.com

Martin's Specialty Shop

WC | 116 East Main Street
Ligonier, PA 15658
724-238-6811

My Honey Bee

SC | 138 West Main Street
Ligonier, PA 15658
724-995-8755
myhoneybee.co

Old General Store

WC | 3822 State Route 31
Donegal, PA 15628
724-593-7112
oldgeneralstore.com

Old General Store

WC | 300 Bessemer Road
Mount Pleasant, PA 15666
724-547-7112
oldgeneralstore.com

Post and Rail Men's Shop

WC | 104 East Main Street
Ligonier, PA 15658
724-238-9235
thepostandrail.com

Roadman's Country Living

WC | 1025 Latrobe 30 Plaza
Suite 125
Latrobe, PA 15650
724-539-1844

Rustic Lodge Furniture

WC | 3829 State Route 31
Donegal, PA 15628
814-721-9038
rusticbest.com

RV Leaders & Camping Outlet

WC | 555 Edna Road
Adamsburg, PA 15611
724-523-0405
rvleaders.com

Sarnelli's Corner

WC | 336 Route 711
Jones Mills, PA 15646
724-593-2001

Second Chapter Books

WC | 139 East Main Street
Ligonier, PA 15658
724-238-7933

Sirofchuck Studios Furniture Gallery

WC | 301 West Main Street
Ligonier, PA 15658
724-593-6313
sirofchuckstudios.com

Sweetlane Chocolate Shop

WC | 113 Grant Ave
Vandergrift, PA 15690
724-568-2961
sweetlanechocolate.com

The Line Boutique

WC | 207 Third St
Irwin, PA 15642
724-515-2392
thelineboutique.com

The Pie Shoppe

WC | 1379 Route 30
Laughlintown, PA 15655
724-238-6621
theoriginalpieshoppe.com

The Westmoreland Museum Shop

WC | 221 North Main Street
Greensburg, PA 15601
724-837-1500
thewestmoreland.org

Wild Things Gift Shop at Living Treasures

Wild Animal Park
WC | 288 Route 711
Jones Mills, PA 15646
724-593-8300
funindonegal.com

Plant-It Earth Greenhouse

INDIANA | 1462 Rhine Road
Blairsville, PA 15717
724-479-0808

Dining

Bittersweet Café

FC | 205 Farmington Ohiopyle Road
Farmington, PA 15437
724-329-4411
bittersweetfresh.com

Braddocks Inn Restaurant & Tavern

FC | 3261 National Road
Farmington, PA 15437
724-329-5508
braddocksinn.com

Caporella's Italian Ristorante

FC | 90 Pittsburgh Street
Uniontown, PA 15401
724-438-8466
caporellas.com

Dairy Queen Grill & Chill - Brownsville

FC | 640 National Pike East
Brownsville, PA 15417
724-785-9469
lynnndq.com

Dairy Queen Grill & Chill - Connellsville

FC | 805 East Crawford Avenue
Connellsville, PA 15425
724-628-3310
lynnndq.com

Dairy Queen Grill & Chill - Uniontown

FC | 575 West Main Street
Uniontown, PA 15401
724-438-3737
lynnndq.com

Dairy Queen Grill & Chill - Uniontown

FC | 460 Connellsville Street
Uniontown, PA 15401
724-437-4101
lynnndq.com

Eat'n Park Restaurant - Uniontown

FC | 519 West Main Street
Uniontown, PA 15401
724-439-0440
eatnpark.com

Falls City Restaurant & Pub

FC | 112 Garrett Street
Ohiopyle, PA 15470
724-329-3000
fallscitypub.com

Falls Market Restaurant & General Store

FC | 69 Main Street
Ohiopyle, PA 15470
724-329-4973

Frank Lloyd Wright's Fallingwater® Café

FC | 1491 Mill Run Road, Route 381 South
Mill Run, PA 15464
724-329-8501
fallingwater.org

Maywood Grill

FC | 2925 National Pike
Chalk Hill, PA 15421
724-437-3564
maywoodgrill.com

Mountain Pies

FC | 4633 National Pike
Markleysburg, PA 15459
724-329-7437
mountainpies.org

Ohiopyle Bakery & Sandwich Shoppe

FC | 85 Main Street
Ohiopyle, PA 15470
724-329-2253
ohiopylebakery.com

Ohiopyle House Café

FC | 144 Grant Street
Ohiopyle, PA 15470
724-329-1122
ohiopylehousecafe.com

Paddlers Pizza

FC | 15 Sherman Street
Ohiopyle, PA 15470
724-329-8888
paddlerspizza.com

Pleasant Valley Golf Club

FC | 440 Pleasant Valley Road
Connellsville, PA 15425
724-628-6360
pleasantvalley.golf

Restaurant Collection at Nemacolin Woodlands Resort

FC | 1001 Lafayette Drive
Farmington, PA 15437
866-386-6957
nemacolin.com

Stone House Restaurant & Country Inn

FC | 3023 National Pike
Farmington, PA 15437
724-329-8876
stonehouseinn.com

Summit Inn Resort Restaurant

FC | 101 Skyline Drive
Farmington, PA 15437
724-438-8594
summitinnresort.com

The Brownstone Oven

FC | Mobile Food Truck
Locations Vary
Normalville, PA 15469
724-875-6036
thebrownstoneoven.com

**Ligonier Tavern and Table**

WC | 139 West Main St
Ligonier, PA 15658
724-238-7788
ligoniertavernandtable.com

Main Street Wine Bar

WC | 4147 Main Street
Stahlstown, PA 15687
724-593-9463
mainstreetwinebar.com

Major Stokes Bar

WC | 108 West Pittsburgh Street
Greensburg, PA 15601
724-217-8609
majorstokes.com

Nino's Restaurant

WC | 546 Three Mile Hill Road
Mount Pleasant, PA 15666
724-547-2900
thelaurelgarden.com

Out of the Fire Café

WC | 3784 State Route 31
Donegal, PA 15628
724-259-8887
outofthefirecafe.com

Ricolita's Café

at the Art Center
WC | 819 Ligonier Street
Latrobe, PA 15650
724-537-7011
latrobeartcenter.org

Silver Horse Coffee

WC | 3846 State Route 31
Donegal, PA 15628
724-593-7433
SilverHorseCoffee.com

Stanton Daily Grind

WC | 814 US 119 North
Suite 100
New Stanton, PA 15672
724-635-3952
stantondailygrind.com

**Tapped Brick Oven
& Pour House**

WC | 6044 US Route 30
Greensburg, PA 15601
724-850-8277
tappedoven.com

The Kitchen On Main

WC | 136 East Main Street
Ligonier, PA 15658
724-238-4199
thekitchenonmain.com

The Road Toad

WC | 2726 Route 30 West
Ligonier, PA 15658
724-539-7623
theroadtoad.com

The Trailside

WC | 108 West Main Street
West Newton, PA 15089
724-872-5171
thetrailside.com

The Village Italian

Restaurant and Lounge
WC | 236 West Main Street
Mount Pleasant, PA 15666
724-547-3529
villageinmp.com

Tree Tops at Polymath Park

Resort
WC | 187 Evergreen Lane
Acme, PA 15610
877-833-7829
treetopsrestaurant.net

Valley Dairy Restaurant

WC | 229 Colony Lane
Latrobe, PA 15650
724-539-0901
valleydairy.net

Eat'n Park Restaurant -**Johnstown**

CAMBRIA | 1900 Minno Drive
Johnstown, PA 15905
814-255-7711
eatnpark.com

Eat'n Park Restaurant -**Johnstown**

CAMBRIA | 1461 Scalp Avenue
Johnstown, PA 15904
814-266-5714
eatnpark.com

37 Grille at Chestnut**Ridge Resort**

INDIANA | 132 Pine Ridge Road
Blairsville, PA 15717
724-459-7191
chestnutridgeresort.com

Lodging

BED & BREAKFASTS AND COUNTRY INNS

Brownstone Victorian**Bed & Breakfast**

FC | 60 East Fayette Street
Uniontown, PA 15401
724-322-2459
brownvic.com

Connellsville**Bed & Breakfast**

FC | 316 West Crawford Avenue
Connellsville, PA 15425
724-603-2533
connellsvillebedbreakfast.com

Fox Castle**Bed and Breakfast**

FC | 1131 South Pittsburgh Street
Connellsville, PA 15425
724-603-3699
foxcastle.com

Inne at Watson's Choice

FC | 234 Balsinger Road
Uniontown, PA 15401
724-437-4999
watsonschoice.com

Seams Like Home**Quilting Retreat B&B**

FC | 2010 Emerald Valley Road
Vanderbilt, PA 15486
724-984-1399
seamslikehomeretreat.com

Starlight Hill**Bed and Breakfast**

FC | 1690 Mill Run Road
Mill Run, PA 15464
724-547-3529
Starlighthillbnb.com

Stone House Restaurant**& Country Inn**

FC | 3023 National Pike
Farmington, PA 15437
724-329-8876
stonehouseinn.com

The Inn at Lenora's

FC | 301 Liberty Street
Perryopolis, PA 15473
724-736-2509
lenoras.com

Bed & Breakfast by Benyak**SC**

| 188 Walnut Street
Confluence, PA 15424
443-253-8706
bedandbreakfastbybenyak.com

Country Dreams**Bed & Breakfast**

SC | 882 Chippewa Road
Rockwood, PA 15557
814-926-4774
countrydreamsbb.net

Hanna House**Bed & Breakfast**

SC | 1790 Listonburg Road
Confluence, PA 15424
814-395-9466
hannahousebandb.net



HARTZELL HOUSE BED AND BREAKFAST

hartzellhouse.com

728 Main Street
Addison, PA 15411
814-395-5248

Casual Elegance in

the Southern Laurel

Highlands. Close to

Fallingwater, Nemacolin,

and Western Maryland

Attractions. TripAdvisor

5-star Property, Gourmet

Dining, Plush Amenities,

Personal Attention,

Organic Amenities, and

Concierge Service.

Huddleson Court**SC**

| 7712 Somerset Pike
Jennerstown, PA 15547
814-629-9201
huddlesoncourt.com

Levi Deal Mansion**Bed & Breakfast**

SC | 301 Meyers Avenue
Meyersdale, PA 15552
814-289-7600
levidealmansion.com

Paddler's Lane Retreat**SC**

| 255 Paddler's Lane
Confluence, PA 15424
814-964-0410
paddlerslane.com

Quill Haven Country Inn**SC**

| 1519 North Center Avenue
Somerset, PA 15501
814-443-4514
quillhaven.com

Schantz Haus Farm**Vacation Bed & Breakfast**

SC | 687 East Campus Avenue
Davidsville, PA 15928
814-483-9332
schantzhaus.com

Smith House Inn**SC**

| 420 Sterner Street
Confluence, PA 15424
814-395-2642
smithhouseinn.com

Stepping Stone Farm**Bed & Breakfast**

SC | 140 Stepping Stone Lane
Confluence, PA 15424
814-395-9988
steppingstonefarmbnb.com

The Parker House**SC**

| 213 Yough Street
Confluence, PA 15424
814-395-9616
theparkerhousecountryinn.com

Yoder's Guest House**SC**

| 106 Meyers Avenue
Meyersdale, PA 15552
814-634-8791
yodersguesthouse.com

Bright Morning**Bed & Breakfast**

WC | 127 Jefferson Court
West Newton, PA 15089
724-872-0792
brightmorningbb.com

Campbell House B & B**WC**

| 305 East Main Street
Ligonier, PA 15658
724-238-9812
campbellhousebnb.com

Foggy Mountain Lodge**WC**

| 117 Foggy Mountain Lane
Stahlstown, PA 15687
724-593-1000
foggymountainlodge.com

Oak Lodge**WC**

| 693 Donegal Lake Road
Stahlstown, PA 15687
724-593-2913
oaklodgepa.com

Robertshaw Country House**Bed & Breakfast**

WC | 1001 Harvey Avenue
Greensburg, PA 15601
724-672-1838

The Colonial House on**Main Bed & Breakfast**

WC | 231 West Main Street
Ligonier, PA 15658
724-238-6804
colonialhouseonmain.com

Thistledown at Seger**House**

WC | 221 West Main Street
Ligonier, PA 15658
724-238-4087
thistledownligonier.com

Savage River Lodge**GARRETT (MARYLAND) |**

1600 Mount Aetna Road
Frostburg, MD 21532
301-689-3200
savageriverlodge.com

CABINS & CAMPGROUNDS

Benner's Meadow Run**Camping & Cabins****FC**

| 315 Nelson Road
Farmington, PA 15437
724-329-4097
bennersmeadowrun.com

Hideaway Campground**FC**

| 166 Indian Creek Valley Road
Normalville, PA 15469
724-455-7700

Mountain Pines**Campground****FC**

| 1662 Indian Creek Valley Road
Champion, PA 15622
724-455-3300
mountainpinescamping.com

Ohiopyle State Park**FC**

| 124 Main Street
Ohiopyle, PA 15470
724-329-8591
dcnr.state.pa.us/stateparks/
findapark/ohiopyle

Trillium Lodge**FC**

| 103 Garrett Street
Ohiopyle, PA 15470
800-272-4141
trillium-lodge.com

Uniontown KOA**at River's Edge**

FC | 1101 Riveredge Road
Connellsville, PA 15425
GPS Address: 100 Adelaide Road
Connellsville, PA
724-628-4880
uniontownkoa.com

Yogi Bear's Jellystone**Park Camp****FC**

| 839 Mill Run Road
Mill Run, PA 15464
724-455-2929
jellystonemillrun.com

Yough Lake Campground**by Laurel Highlands****Outdoor Center****FC**

| 250 Tub Run Road
Confluence, PA 15424
724-329-8531
laurelhighlands.com/yough-lake-
campground-tub-run

Boyer's Pond Campground**SC**

| 7368 Lincoln Highway
Central City, PA 15926
814-754-5702
boyerspondcampground.com

Camp Harmony**SC**

| 1414 Plank Road
Hooversville, PA 15936
814-798-5885
campharmony.org

Festival Park Campground**SC**

| 120 Meyers Avenue
Meyersdale, PA 15552
814-634-0213
pamaplefestival.com

Hickory Hollow**Campground****SC**

| 176 Big Hickory Road
Rockwood, PA 15557
814-926-4636
hickoryhollowcampground.com

Kooser State Park**SC**

| 943 Glades Pike
Somerset, PA 15501
814-445-8673
dcnr.state.pa.us/stateparks/
findapark/kooser

Laurel Hill State Park**SC**

| 1454 Laurel Hill Park Road
Somerset, PA 15501
814-445-7725
dcnr.state.pa.us/stateparks/
findapark/laurelhill

Laurel Ridge State Park**SC**

| 1117 Jim Mountain Road
Rockwood, PA 15557
724-455-3744
dcnr.state.pa.us/stateparks/
findapark/laurelridge

Lost Mountain Campground**SC**

| 195 Lost Mountain Lane
Rockwood, PA 15557
888-238-6686
lostmountaincampground.com

Paddler's Lane Retreat**SC**

| 255 Paddler's Lane
Confluence, PA 15424
814-964-0410
paddlerslane.com

Pioneer Park Campground**SC**

| 273 Trent Road
Somerset, PA 15501
814-445-6348
pioneerparkcampground.com

Scottyland RV Resort**SC**

| 1618 Barron Church Road
Rockwood, PA 15557
814-926-3200

Youghiogheny River Lake**SC**

| US Army Corp of Engineers,
497 Flanigan Road
Confluence, PA 15424
814-395-3242
lrp.usace.army.mil/Missions/
Recreation/Lakes/Youghiogheny-
River-Lake

Claycomb Chalets**WC**

| 114 Claycomb Chalets Lane
Champion, PA 15622
724-593-7765
claycombchalets.com

Fox Den Acres Campground**WC**

| 390 Wilson Fox Road
New Stanton, PA 15672
724-925-7054
foxdenacres.com

Keystone State Park**WC**

| 1150 Keystone Park Road
Derry, PA 15627
724-668-2939
dcnr.state.pa.us/stateparks/
findapark/keystone

Laurel Highlands Campland**WC**

| 693 Donegal Lake Road
Stahlstown, PA 15687
724-593-6325
lhcampland.com

Linn Run State Park**WC**

| 770 Linn Run Rd
Rector, PA 15677
724-238-6623
dcnr.state.pa.us/stateparks/
findapark/linnrun

Madison/Pittsburgh KOA**WC**

| 764 Waltz Mill Road
Ruffs Dale, PA 15679
724-722-4444
pittsburghkoa.com

Mirror Lake Campground**WC**

| 112 Trout Run Drive
New Florence, PA 15944
724-235-2115
mirrorlakercamping.com

Loyalhanna Lake**INDIANA |**

440 Loyalhanna Dam Road
Saltsburg, PA 15681
724-639-9013
lrp.usace.army.mil/missions/
recreation/lakes/loyalhannalake.
aspx

CONFERENCE/ RETREAT CENTERS & UNIQUE VENUES

Aaron's Building**FC**

| 139 North Pittsburgh Street
Connellsville, PA 15425
724-628-8968
aaronbuilding.com



The House at Confluence
SC | 415 Sterner Street
Confluence, PA 15424
724-875-6951
thehouseatconfluence.com

The Turkeyfoot Inn
SC | 422 & 424 Latrobe Avenue
Confluence, PA 15424
814-312-3806
theturkeyfootinn.com

The Village Moose
SC | 8051 Meadowridge Drive
Seven Springs, PA 15622
412-979-2491
thevillagemoose.com

W Group Holdings
SC | 413 North Avenue
Pittsburgh, PA 15209
724-940-9119
wgroupholdings.com

Willamy Pines
SC | 316 Snake Path Road
Somerset, PA 15501
724-771-2280
willamypines.com

Yough Vacation Rentals
SC | River Road
Confluence, PA 15424
304-685-9142
youghvacationrentals.com

Alice's Spring Cottage
WC | 221 North Grant Street
Ligonier, PA 15658
703-489-0487

Claycomb Chalets
WC | 114 Claycomb Chalets Lane
Champion, PA 15622
724-593-7765
claycombchalets.com

Cottages at Millbank
WC | 238 Deeds Road
Ligonier, PA 15658
724-689-3397
millbankcottages.com

Farmhouse 1868
WC | 3962 PA Route 130
Stahlstown, PA 15687
724-593-2913
farmhouse1868.com

Frank Lloyd Wright's Polymath Park
WC | 187 Evergreen Lane
Acme, PA 15610
877-833-7829
polymathpark.com

Saint Emma Monastic Guest House
WC | 1001 Harvey Avenue
Greensburg, PA 15601
724-834-3060
stemma.org

Sunset Cottages
WC | 1651 Route 30
Ligonier, PA 15658
724-261-9040
sunsetcottagesligonier.com

The Carriage House on Slope Hill
WC | 4184 Slope Hill Road
Mount Pleasant, PA 15666
724-244-5457

HOSTELS



THE HOSTEL ON MAIN

hostelonmain.com
506 Main Street
Rockwood, PA 15557
814-442-1221

The hostel accommodates guests dormitory style at reasonable rates. Private shared baths and kitchen. Indoor bike storage for those biking the GAP. Great for groups and families.

HOTELS & MOTELS

Comfort Inn Hotel
FC | 237 North First Street
Connellsville, PA 15425
724-603-3580
choicehotels.com/en-ca/pennsylvania/Connellsville

Hampton Inn Uniontown
FC | 698 West Main Street
Uniontown, PA 15401
724-430-1000
hamptoninn3.hilton.com/en/hotels/pennsylvania/hampton-inn-uniontown-UNTPAHX/index.html

Hilton Garden Inn Uniontown
FC | 555 Synergy Drive
Uniontown, PA 15401
724-434-7200
uniontown.hgi.com

Hopwood Motel of Uniontown
FC | 1151 National Pike
Uniontown, PA 15401
724-437-7591
thehopwoodmotel.com

National Trail Motel
FC | 4617 National Pike
Markleysburg, PA 15459
724-329-5531
nationaltrailmotel.com

Ramada by Wyndham, Uniontown
FC | 700 West Main Street
Uniontown, PA 15401
724-437-2816
wyndhamhotels.com/hotels/154269

Summit Inn Resort
FC | 101 Skyline Drive
Farmington, PA 15437
724-438-8594
summittinresort.com

The Lodge at Chalk Hill
FC | 2920 National Pike
Chalk Hill, PA 15421
724-438-8880
thelodgeatchalkhill.com

Yough Plaza Motel
FC | 28 Sherman Street
Ohiopyle, PA 15470
724-329-8850
youghplazamotel.com

Coal Miners Café & Hotel
SC | 1640 Pitt Street
Jennerstown, PA 15547
814-629-5518

Comfort Inn Somerset
SC | 202 Harmon Street
Somerset, PA 15501
814-445-9611
comfortinnsomersetpa.com

Fairfield Inn & Suites by Marriott, Somerset
SC | 117 Tollgate Road
Somerset, PA 15501
814-701-2829
marriott.com/hotels/travel/lbess-fairfield-inn-and-suites-somerset

Hampton Inn Somerset
SC | 324 Laurel Crest Road
Somerset, PA 15501
814-445-9161
hamptoninn3.hilton.com/en/hotels/pennsylvania/hampton-inn-somerset-SOMPAHX

Laurel Manor Motel
SC | 1331 Pitt Street
Jennerstown, PA 15547
814-629-9058
laurelmanormotel.net

Courtyard by Marriott Greensburg
WC | 700 Power Line Drive
Greensburg, PA 15601
724-834-3555
courtyardgreensburg.com

Days Inn Donegal
WC | 3620 Route 31 East
Donegal, PA 15628
724-593-7536
daysinnDONEGAL.com

Fairfield Inn & Suites by Marriott New Stanton
WC | 107 Bair Boulevard
New Stanton, PA 15672
724-755-0800
marriott.com/hotels/travel/lbefi-fairfield-inn-and-suites-pittsburgh-new-stanton/

Hampton Inn & Suites New Stanton
WC | 120 North Rachel Drive
New Stanton, PA 15672
724-755-4260
hamptoninn3.hilton.com/en/hotels/pennsylvania/hampton-inn-and-suites-pittsburgh-new-stanton-LBENSHX/index.html

Hampton Inn & Suites North Huntingdon - Irwin
WC | 8441 Country Club Drive
North Huntingdon, PA 15642
724-863-9900
northhuntingdonirwin.hamptonbyhilton.com

Hampton Inn Belle Vernon
WC | 1525 Broad Avenue Ext.
Belle Vernon, PA 15012
724-929-8100
hilton.com/en/hotels/belpahx-hampton-belle-vernon

Hampton Inn by Hilton Greensburg
WC | 1000 Towne Square Drive
Greensburg, PA 15601
724-838-8800
greensburgpa.hamptoninn.com

Holiday Inn Express & Suites Belle Vernon
WC | 181 Finley Road
Belle Vernon, PA 15012
724-930-0100
holidayinnexpress.com/bellevernonpa

Holiday Inn Express & Suites Donegal
WC | 3695 State Route 31
Donegal, PA 15628
724-593-1881
hiexpress.com/donegalpa

Holiday Inn Express & Suites Greensburg
WC | 137 Blair Street
Greensburg, PA 15601
724-837-1400
ihg.com/holidayinnexpress/hotels/us/en/greensburg/lbeggp/hoteldetail

Holiday Inn Express Delmont
WC | 6552 Route 22
Delmont, PA 15626
724-468-1050
hiexpress.com/murrysvl/dlmt

Holiday Inn Express Irwin
WC | 8400 Route 30
Irwin, PA 15642
724-861-9000
hiexpress.com/irwinpa

Holiday Inn Express Mount Pleasant
WC | 250 Bessemer Road
Mount Pleasant, PA 15666
724-547-2095
hiexpress.com/mtpleasantpa

Knight's Inn Greensburg
WC | 1215 South Main Street
Greensburg, PA 15601
724-836-7100
knightsinn.com/hotels/pennsylvania/greensburg/knights-inn-greensburg/hotel-overview

Log Cabin Lodge & Suites
WC | 288 Route 711
Jones Mills, PA 15646
724-593-8200
logcabinmotel.com

Ramada Ligonier
WC | 216 West Loyalhanna Street
Ligonier, PA 15658
724-238-9545
ramadaligonier.com

Red Roof Inn
WC | 111 Sheraton Drive
Greensburg, PA 15601
724-216-5951
redroof.com/property/pa/greensburg/RR11104

SpringHill Suites by Marriott Pittsburgh-Latrobe
WC | 115 Arnold Palmer Drive
Latrobe, PA 15650
724-537-7800
marriott.com/pitt

Hampton Inn & Suites at Chestnut Ridge Resort
INDIANA | 62 Pine Ridge Road
Blairsville, PA 15717
724-459-5920
blairsvillesuites.hamptoninn.com

PET LODGING

Cozy Inn Pet Resort & Orchid's Spa
WC | 405 Hauger Hood Road
Stahlstown, PA 15687
724-593-6133
cozyinnpetresort.net

RESORTS

Nemacolin Woodlands Resort
FC | 1001 Lafayette Drive
Farmington, PA 15437
866-386-6957
nemacolin.com

Hidden Valley Resort
SC | 1 Craighead Drive
Hidden Valley, PA 15502
814-443-8000
hiddenvalleysort.com

Seven Springs Mountain Resort
SC | 777 Waterwheel Drive
Seven Springs, PA 15622
800-452-2223
7springs.com

Resources

AUTO, TRAVEL & TRANSPORTATION

Budget Charters
FC | 173 East Riverside Road
Adah, PA 15410
724-246-1982
budgetchartersinc.com

Dumbauld's Tire Service
SC | 1259 North Center Avenue
Somerset, PA 15501
814-445-7921
dumbauldstire.com

Trackside Auto Shine
SC | 221 North Pleasant Avenue
Somerset, PA 15501
814-445-7878
tracksideautoshine.com

Arnold Palmer Regional Airport
WC | 148 Aviation Lane
Suite 103
Latrobe, PA 15650
724-539-8100
palmerairport.com

Elite Coach Transportation
WC | 4351 William Penn Highway
Murrysville, PA 15668
724-325-2626
elite-corporation.com

Love Receptive Services
WC | 303 Plymouth Drive
Delmont, PA 15626
724-972-7277
lovereceptiveservices.com

Quest Coach
WC | 5506 Scottsdale-Dawson Road
Scottdale, PA 15683
724-887-5030
quest-coach.com

ExecuCar/Pittsburgh Transportation Group
ALLEGHENY | 1825 Liverpool Street
Pittsburgh, PA 15233
412-444-4444
pghtans.com

CIVIC & COMMUNITY ORGANIZATIONS

Fayette Chamber of Commerce
FC | 65 West Main Street,
Suite 107
Uniontown, PA 15401
724-437-4571
fayettechamber.com

Fayette County Commissioner
FC | 61 East Main Street
Uniontown, PA 15401
724-430-1201

Fayette County Cultural Trust
FC | 139 West Crawford Avenue
Connellsville, PA 15425
724-603-2093
fayettetrust.org

Fay-Penn Economic Development Council
FC | 1040 Eberly Way, Suite 200
Lemont Furnace, PA 15456
724-437-7913
faypenn.org

Greater Brownsville Area Chamber of Commerce
FC | 325 Market Street
Brownsville, PA 15417
724-785-4160
brownsvilleborough.com

Greater Connellsville Chamber of Commerce
FC | 100 South Arch Street
Connellsville, PA 15425
724-628-5500
greaterconnellsville.org

Uniontown Downtown Business District Authority
FC | 20 North Gallatin Avenue
Suite 217
Uniontown, PA 15401
724-438-4289
mainstreetuniontown.org

Casselman River Watershed Association
SC | c/o Somerset Conservation District, 6024 Glades Pike
Suite 103
Somerset, PA 15501
814-289-4246
casselmanwatershed.org

Confluence Tourism Association
SC | PO Box 144
Confluence, PA 15424
814-395-9380
visitconfluence.info

Life at Hidden Valley (HOA)
SC | 1900 South Ridge Drive
Hidden Valley, PA 15502
814-443-3001
hvtoday.com

Meyersdale Area Merchants' Association
SC | PO Box 33
Meyersdale, PA 15552
814-442-0096
meyersdalemerchantsonline.com

Salisbury/Elk Lick Chamber of Commerce
SC | PO Box 102
Salisbury, PA 15558
814-662-4185

Somerset County Chamber of Commerce
SC | 601 North Center Avenue
Somerset, PA 15501
814-445-6431
somersetpa.net

Somerset County Commissioner
SC | 300 North Center Avenue
Suite 500
Somerset, PA 15501
814-445-1400

Somerset County Economic Development Council
SC | 125 North Center Avenue
Somerset, PA 15501
814-445-9655
scedc.net

Somerset, Inc.
SC | 130 North Center Avenue
Somerset, PA 15501
814-443-1748
somersetinc.org

Windber Area Visioning Experience
SC | 1605 Graham Avenue
Windber, PA 15963
814-467-8662

Alle Kiski Strong Chamber
WC | 308 Pittsburgh Mills Circle
Tarentum, PA 15084
724-224-3400
allekiskistrong.com

Black Angus Corporate Meetings Planner
WC |
Latrobe, PA 15650
724-875-8291
blackangusplanners.com

City of Greensburg
WC | 416 South Main Street
Greensburg, PA 15601
724-838-4324
greensburgpa.org

Downtown Greensburg Project
WC |
Greensburg, PA 15601
724-787-1566
downtowngreensburgpa.us

Downtown West Newton, Inc.
WC | 201 East Main Street
West Newton, PA 15089
724-552-6373
dwini.org

Economic Growth Connection of Westmoreland
WC | 40 North Pennsylvania Avenue, Suite 510
Greensburg, PA 15601
724-830-3604
egcw.org

GREATER LATROBE LAUREL VALLEY REGIONAL CHAMBER OF COMMERCE

gllv.org

811 Ligonier Street
Latrobe, PA 15650
724-537-2671

The GLLV Chamber is an advocate for area businesses, promotes vibrant economic climate, encourages attraction of jobs, striving to make Westmoreland County a great place to live, work, and play.

Irwin Business & Professional Association
WC | PO Box 222
Irwin, PA 15642
724-864-0560
downtownirwin.com

Jeannette Business Association
WC | 1309 North Second Street
Jeannette, PA 15644
412-401-4725
jeannetteba.org

Latrobe Community Revitalization Program
WC | 816 Ligonier Street, Suite 409
Latrobe, PA 15650
724-805-0112
latroberevitalization.org

Ligonier Township Supervisors
WC | One Municipal Park Drive
Ligonier, PA 15658
724-238-2725
ligoniertownship.com

Ligonier Valley Chamber of Commerce
WC | 120 East Main Street
Ligonier, PA 15658
724-238-4200
ligonier.com

Loyalhanna Watershed Association
WC | 6 Old Lincoln Highway
West Ligonier, PA 15658
724-238-7560
loyalhannawatershed.org

Mount Pleasant Business District Authority
WC | 535 West Main Street
Mount Pleasant, PA 15666
724-547-0660
mountpleasantbda.com

Mountain Laurel Chamber of Commerce
WC | 3682 State Route 31
Donegal, PA 15628
724-593-8900
mountainlaurelchamber.com

Norwin Chamber of Commerce
WC | 321 Main Street
Irwin, PA 15642-3437
724-863-0888
norwinchamber.com

Scottdale Area Chamber of Commerce
WC | 318 Pittsburgh Street
Suite C
Scottdale, PA 15683
724-887-3611
scottdale.com

Scottdale Community Civic & Industrial Association
WC | 318 Pittsburgh Street
Scottdale, PA 15683
724-887-9310

Twin Rivers Chamber of Commerce
WC | 516 Circle Drive
Belle Vernon, PA 15012
724-929-3329
twinriverschamber.org

Vandergrift Improvement Program
WC | 141 Grant Avenue
Vandergrift, PA 15690
724-567-5286
officialvandergrift.com

Westmoreland County Chamber of Commerce
WC | 241 Tollgate Hill Road
Greensburg, PA 15601
724-834-2900
westmorelandchamber.com

Westmoreland County Chapter - Keystone Elk Country Alliance
WC |
Latrobe, PA 15650
724-694-1309
experienceelkcounrty.com

Westmoreland County Commissioner
WC | Office of County Commissioners, 2 North Main Street
Suite 101
Greensburg, PA 15601
724-830-3000

Westmoreland Heritage
WC | 809 Forbes Trail Road
Greensburg, PA 15601
724-532-1935
westmorelandheritage.org

YWCA Westmoreland County
WC | 424 North Main Street
Greensburg, PA 15601
724-834-9390
ywcawestmoreland.org

Pennsylvania Environmental Council ALLEGHENY | 810 River Avenue
Suite 100
Pittsburgh, PA 15212
412-481-9400
pecpa.org

Greater Johnstown/Cambria County Chamber of Commerce
CAMBRIA | 245 Market Street,
Suite 100
Johnstown, PA 15901
814-536-5107
johnstownchamber.com

COLLEGES & EDUCATION CENTERS

Penn State Fayette, The Eberly Campus
FC | 2201 University Drive
Lemont Furnace, PA 15456
724-430-4100
fayette.psu.edu

Douglas Education Center
WC | 130 Seventh Street
Monessen, PA 15062
724-684-3684
dec.edu

Lake Erie College of Osteopathic Medicine at Seton Hill
WC | 20 Seton Hill Drive
Greensburg, PA 15601
724-552-2880
lecom.edu

Saint Vincent College
WC | 300 Fraser Purchase Road
Latrobe, PA 15650
724-532-6600
stvincent.edu

University of Pittsburgh at Greensburg
WC | 150 Finoli Drive
Greensburg, PA 15601
724-837-7040
greensburg.pitt.edu

Westmoreland County Community College
WC | 145 Pavilion Lane
Youngwood, PA 15697
724-925-4000
westmoreland.edu

HEALTH CARE SERVICES

Highlands Hospital
FC | 401 East Murphy Avenue
Connellsville, PA 15425
724-628-1500
highlandshospital.org

Uniontown Hospital
FC | 500 West Berkeley Street
Uniontown, PA 15401
724-430-5000
uniontownhospital.com

2020 LISTINGS

LAURELHIGHLANDS.ORG

Learn more details about the following attractions, parks, restaurants, and places to stay.

Conemaugh Health System
CAMBRIA | 1086 Franklin Street
Johnstown, PA 15905
814-534-9000
conemaugh.org

INSURANCE & FINANCIAL SERVICES

Somerset Trust Company
SC | 151 West Main Street
Somerset, PA 15501
814-443-9200
somerstrust.com

Baily Insurance
WC | 232 North Market Street
Ligonier, PA 15658
724-238-9508
bailyagency.com

**Commercial Bank
& Trust of PA**
WC | 900 Ligonier Street
Latrobe, PA 15650
724-539-3501
cbthebank.com

The Progress Fund
WC | 425 West Pittsburgh Street
Greensburg, PA 15601
724-216-9160
progressfund.org

MEDIA, PRINT & DESIGN SERVICES

Laurel Valley Graphics
WC | 1511 Monastery Drive
Latrobe, PA 15650
724-539-4545
lvgraphics.net

WJAC-TV
CAMBRIA | 49 Old Hickory Lane
Johnstown, PA 15904
814-255-7600
wjactv.com

PARTY & EVENT RENTALS

**Windswept Entertainment
& Event Rentals**
WC | 4371 Route 30
Latrobe, PA 15650
724-539-1009
windswept.com

RADIO

LHTC Media
WC | 400 Unity Street, Suite 200
Latrobe, PA 15650
724-537-3338
lhtcmedia.com

REAL ESTATE & HOME BUILDERS

Hemminger Homes
SC | 1023 Baer Lane
Somerset, PA 15501
814-443-4855
hemmingerhomes.com

Al Meucci Real Estate
WC | 2506 County Line Road
Champion, PA 15622
724-593-2322
almeucci realestate.com

**Berkshire Hathway
HomeServices, The
Preferred Realty**
WC | Laurel Highlands Division,
3802 State Route 31, Suite 1
Donegal, PA 15628
724-593-6195
thepreferedrealty.com

**Piatt Sotheby's
International Realty**
260 Forbes Avenue
Pittsburgh, PA 15222
412-471-4900
piattsothebysrealty.com

RETIREMENT COMMUNITIES

Bethlen Communities
WC | 125 Kalassay Drive
Ligonier, PA 15658
724-238-2235
bethlen.com

SECRET SHOPPING

High Impact2
CAMBRIA | 171 Fifty Acre Road
Johnstown, PA 15904
814-659-7144
highimpact2.com
724-550-4104

HERE WE GO STEELERS

TRAINING CAMP IN THE LAUREL HIGHLANDS

Visit Training Camp!

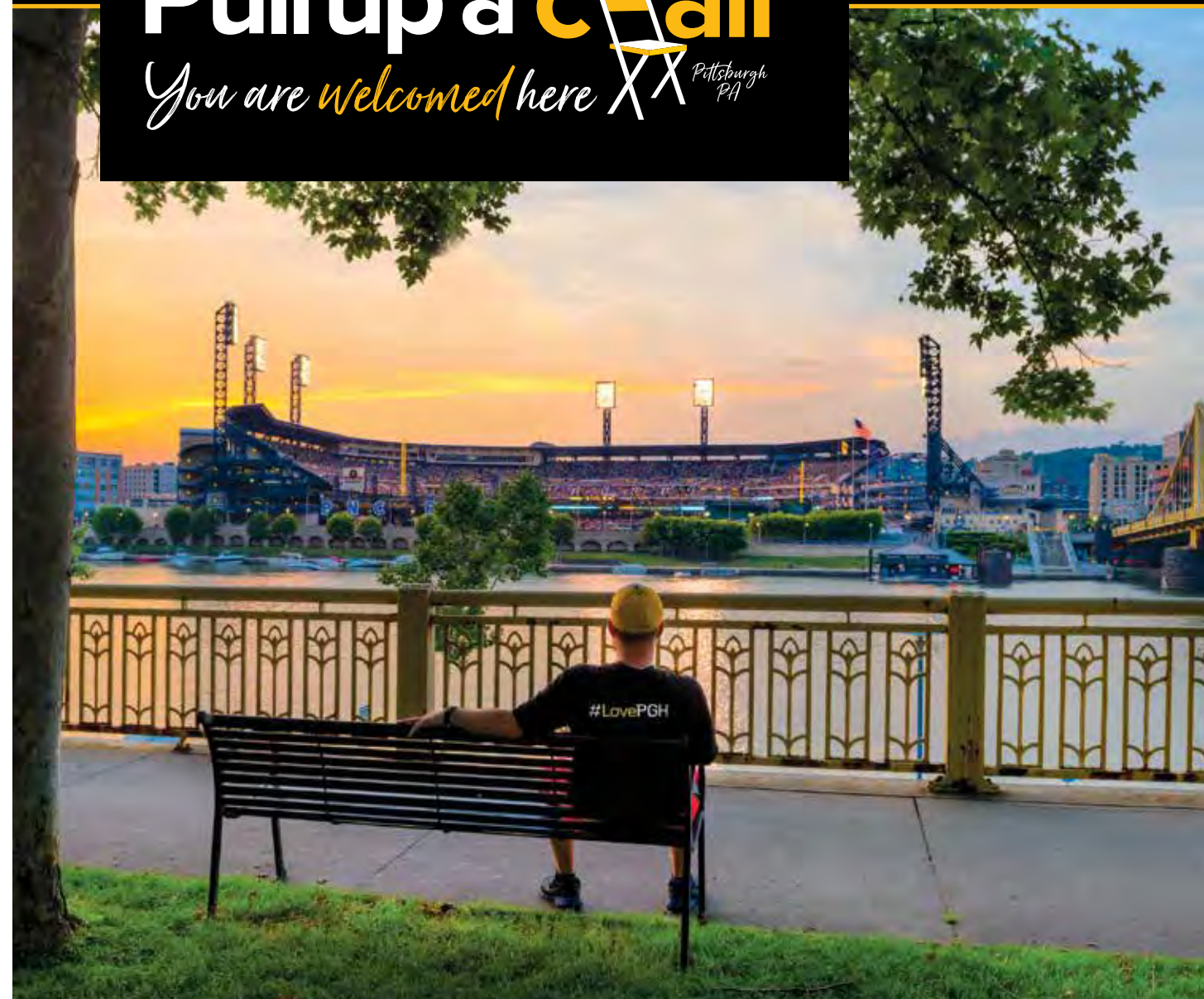
For more than 50 years, the Pittsburgh Steelers have called Saint Vincent College home for nearly three weeks every summer for training camp. Every year, Steelers Nation shows up to cheer on the black and gold from the bleachers as they practice on Chuck Noll Field. In addition to watching practice, you have the chance of meeting your favorite player and getting their autograph. Plus, your kiddos can burn off some energy while dodging and diving through football-themed obstacle courses. Frequently named the most fan-friendly training camp in the NFL, Steelers Training Camp is free and open to the public.

LEARN MORE:

For Steelers Training Camp dates, tips, and more,
laurelhighlands.org/steelers



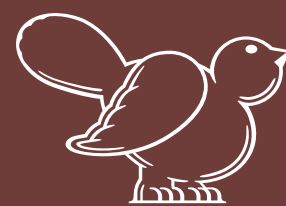
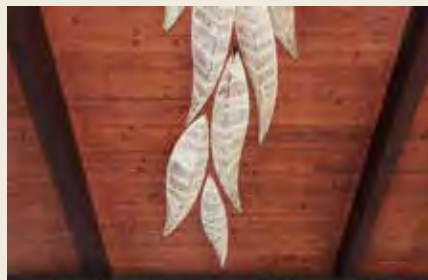
Pull up a **c=air**TM
You are *welcomed* here **XX** *Pittsburgh PA*



THE EXPERIENCE OF
VISITING PITTSBURGH
isn't like any other city.

When you arrive, you become part of the **community**.
Pull up a chair. You are welcomed here.

Find out more at
VisitPITTSBURGH.com



NEMACOLIN WOODLANDS RESORT

1001 Lafayette Drive • Farmington, PA 15437
866.396.6957 • nemacolin.com

Nestled in the scenic Laurel Highlands of Southwestern Pennsylvania, Nemacolin Woodlands Resort has taken the luxury vacation to unparalleled levels.

We offer superb accommodations to fit your style. Vacation in the Frank Lloyd Wright inspired Falling Rock, renowned for its Forbes' Five Star, World's Most Luxurious Hotels and AAA Five Diamond awards, the French inspired Chateau Lafayette with period chandeliers and marbled floors, the historic Lodge with vintage flair, and our private family-style townhomes and luxury vacation homes. Indulge your senses in the unexpected!

Renowned for award-winning dining, a world-class spa and wellness center and a multitude of activities on 2,000 acres, Nemacolin is dedicated to providing our guests with stellar service. We look forward to hosting you on your next visit to our playground!