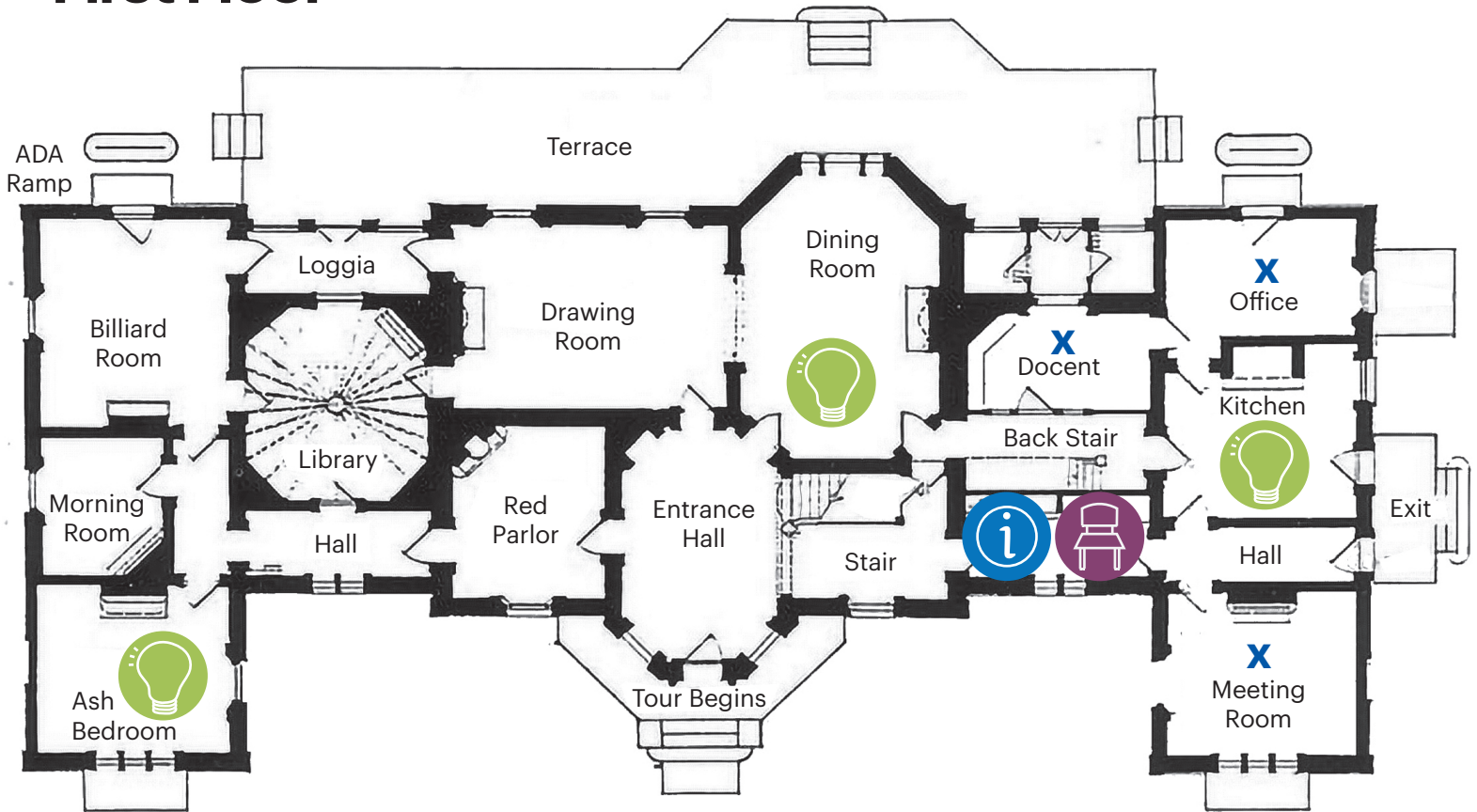
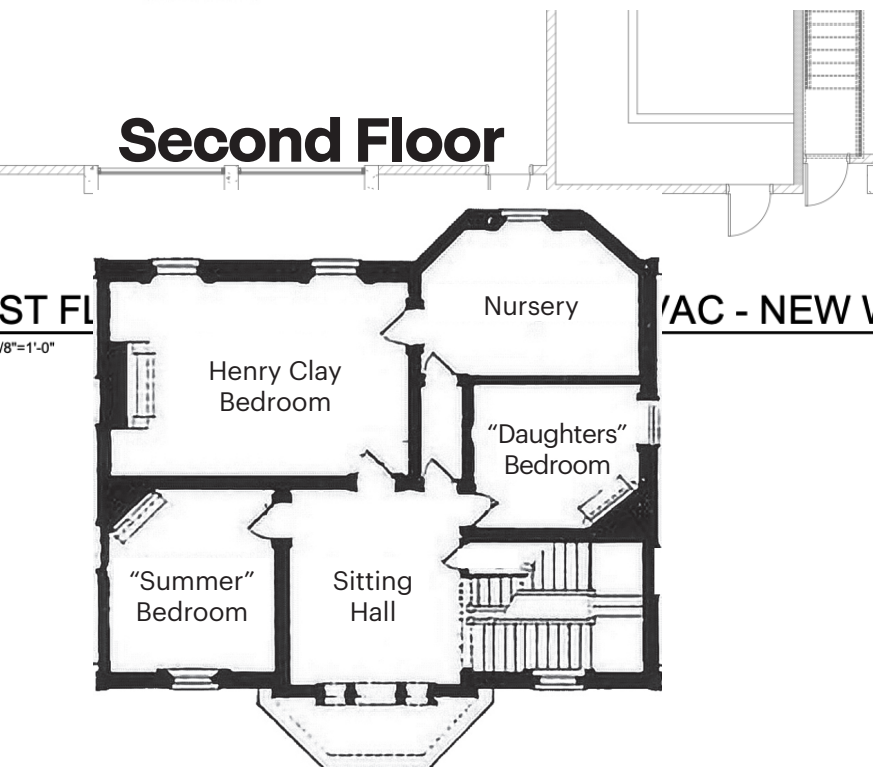


First Floor



Second Floor



Sensory Icon Key



Visual/Sight



Information



Seating



Restrooms



Quiet Space



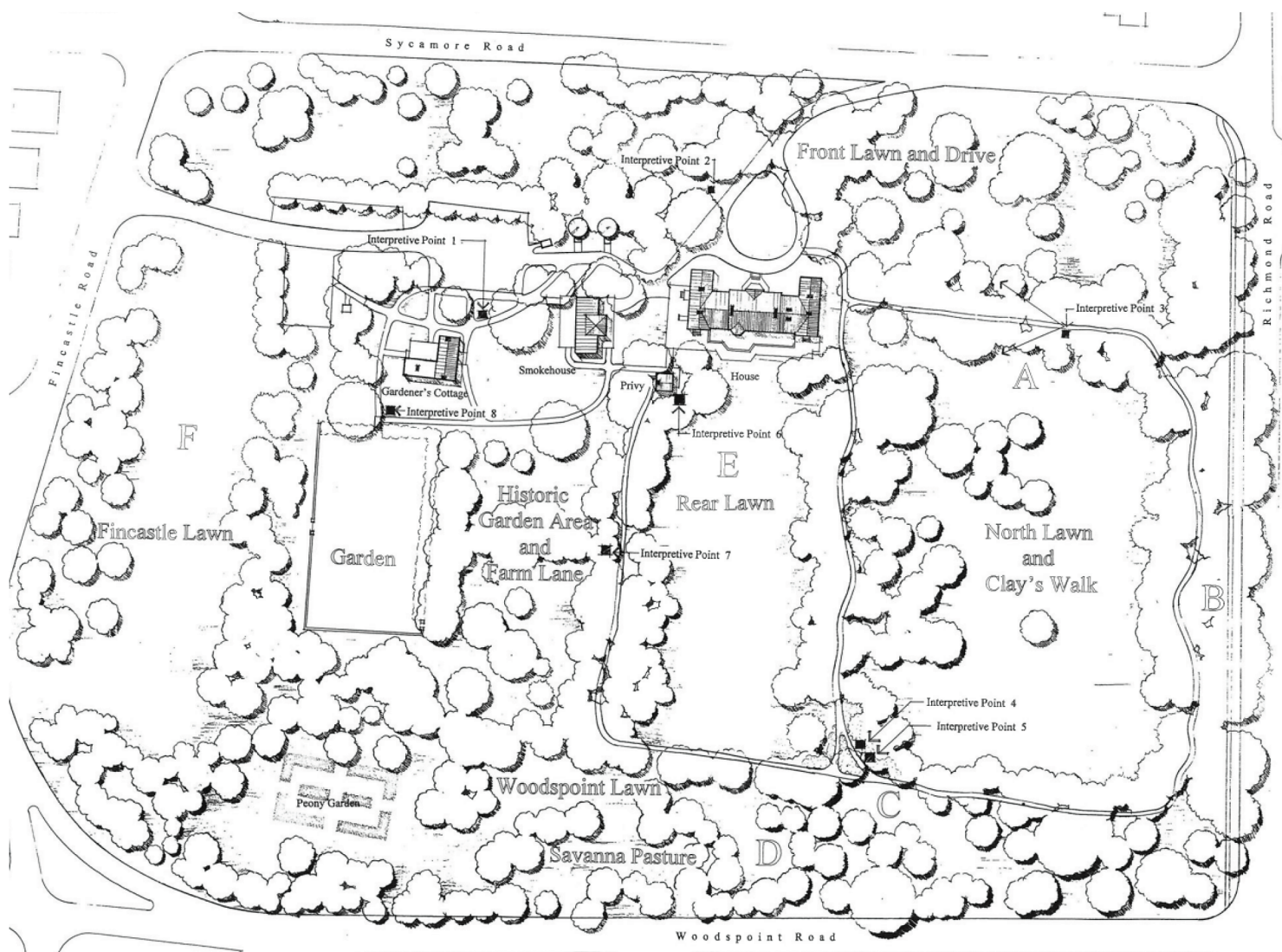
Refreshments

Sensory Signals

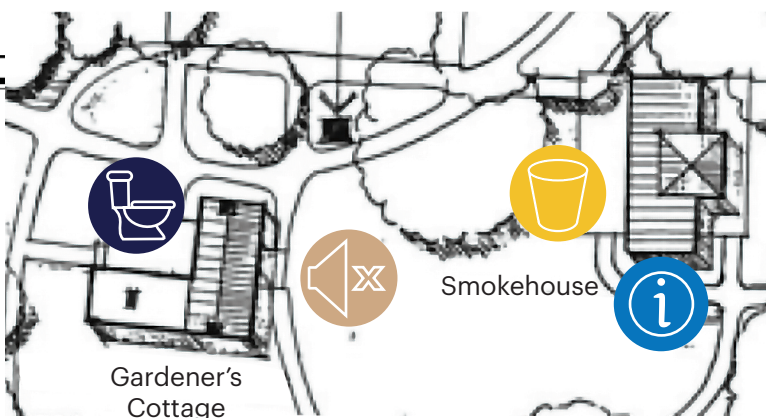


Ashland

The Henry Clay Estate



Grounds (near house)



Notes

- On-Site Café: The Ginkgo Tree
- ADA Ramp on back side to enter house:
Can call ahead to drive up front driveway to be closer to ramp for dropoff
- Second Floor not accesible: have seating in Sitting Hall
- Parking lot, path to check-in (Gardener's Cottage) and house is paved
- Paths on grounds are either mulch or gravel
- No motorized wheelchairs in house
- Dogs must be on leash on grounds
- Rooms marked with an x are not part of the tour