

THIS is

LIVER POOL

A Visitor Guide to the
City Region

VISIT
LIVERPOOL
.COM

SPONSORED BY

AVANTI
WEST COAST





Welcome

Welcome to Liverpool City Region, made for sunny days, long evenings and the simple joy of exploring somewhere new.

Whether you are returning or arriving for the very first time, this is the season when coastlines call, parks come to life and every borough feels bright with possibility.

Inside this guide, you will find all our essential features, giving you everything you need to plan the perfect trip.

This edition is filled with fresh inspiration for the warmer months. Begin by stepping inside some of the region's most recognisable landmarks. From the Royal Liver Building's clock towers to the elegant halls and spaces of St George's Hall, these icons are packed with character, atmosphere and stories waiting to be uncovered. Each one is an invitation to pause, wander and experience Liverpool City Region from a new perspective.

If you are drawn to the water, you will find countless ways to make a splash. Walk barefoot across Formby's golden sands, paddleboard between the historic warehouses of Royal Albert Dock, kayak along the wild edges of Wirral's coastline or enjoy the easy summer glow around Southport's Marine Lake.

With calm lakes, open sea views and stretches of peaceful shoreline, this is a season shaped by light and fresh air.

Families will discover adventures around every corner. Eureka! Science + Discovery and Catalyst Science and Discovery Centre offer hands-on science; Knowsley Safari promises wild encounters and museums across the region combine creativity and learning in a way that keeps children absorbed from morning to afternoon. These are places where curiosity leads the way and fun becomes the best teacher.

Beyond the city, Halton offers a host of surprises, from ancient ruins wrapped in greenery to riverside paths that open into sweeping views. Its galleries, parks and historic corners bring an easy sense of calm to summer days.

Across the region, the calendar is packed with stand-out moments. On the Waterfront returns in June, Anfield hosts another unforgettable run of summer concerts, The 154th Open brings world-class golf to Southport in July and the much-loved Southport Flower Show blossoms again in August. Together they create a season filled with music, colour and celebration.

Wherever your plans lead you, let this guide be your starting point for an unforgettable summer. Here is to sunshine, sea breezes, new adventures and a warm welcome to Summer 2026.



Visitor Welcome

Discover everything you need for an unforgettable trip to Liverpool with our dedicated Visitor Welcome Centre. From what's on to things to do, our friendly and knowledgeable information advisors are here to help you every step of the way as you plan your visit to Liverpool City Region.

Contents

Events - 5

Culture - 8

Music - 14

Tours - 17

Sport - 18

Families - 22

Taste Liverpool City Region - 27

Halton Hotspots - 33

Where to Stay - 38

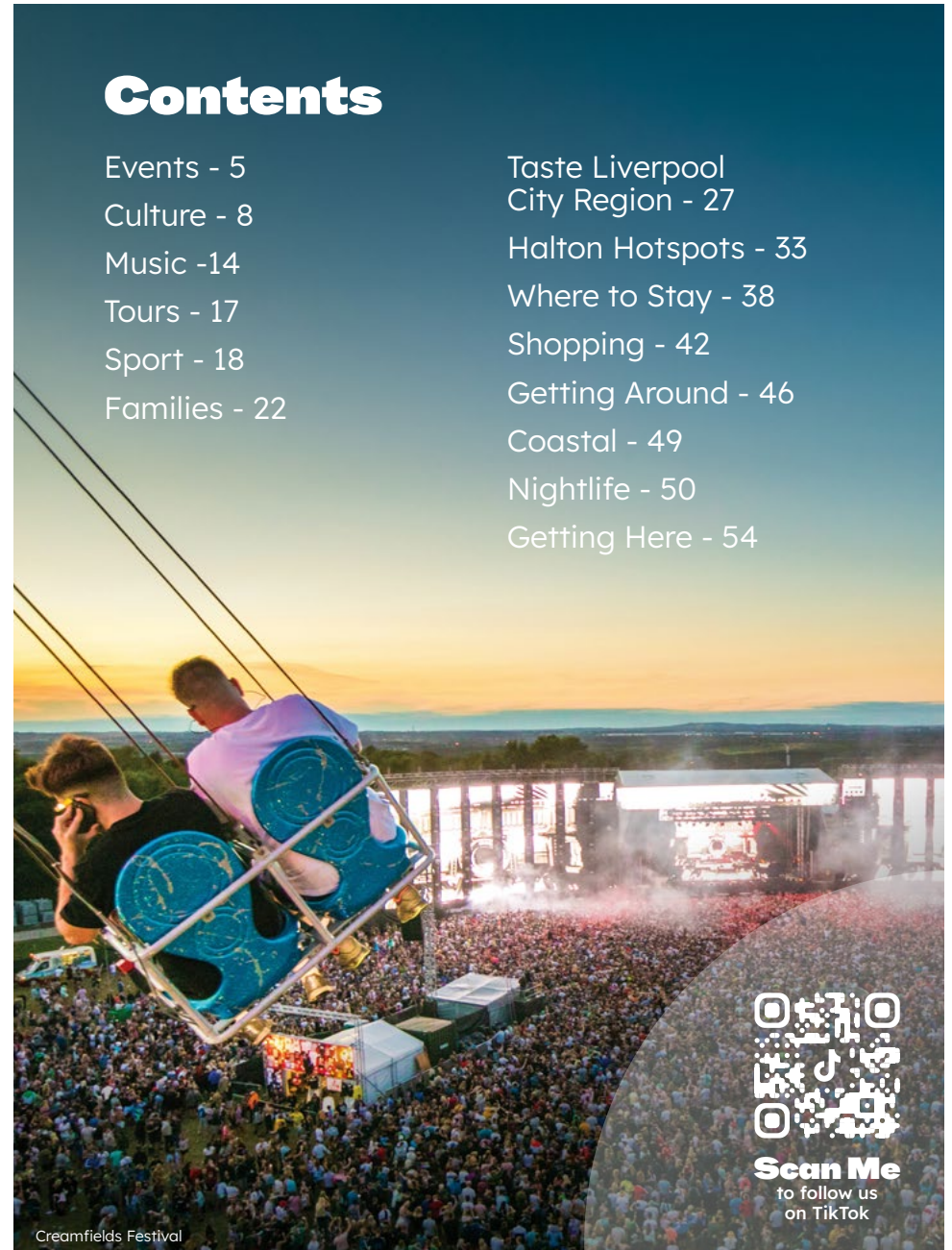
Shopping - 42

Getting Around - 46

Coastal - 49

Nightlife - 50

Getting Here - 54



Creamfields Festival



Scan Me
to follow us
on TikTok

YOUR ULTIMATE ENTERTAINMENT UPGRADE

FOR MORE INFORMATION PLEASE VISIT
MANDSBANKARENA.COM



SCAN TO FIND
OUT MORE

PREMIUM
AT M&S BANK ARENA



Events

May Morris: Crafting a Legacy

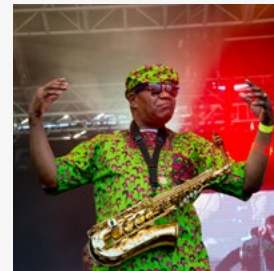
Lady Lever Art Gallery
25 Apr - 1 Nov 2026

This exhibition is a celebration of the wide-ranging creative output of Arts and Crafts designer and maker, May Morris, the younger daughter of William Morris. A vibrant display of embroideries, wallpapers, watercolour designs, costumes and jewellery will showcase her many talents.

Anfield Concerts

Anfield Stadium
12 Jun, 25 & 27 Jun,
30 Jun 2026

Country music superstar Zach Bryan will take to the stage on 12 June. Rock legends, Foo Fighters will bring their much-loved anthems to the stadium on 25 and 27 June and alt-rock favourites, My Chemical Romance will head to Anfield on 30 June.



❤️ 🔍 🗒️ Africa Oyé 📌

On the Waterfront

Liverpool Pier Head
18-21 Jun 2026

Set against the breathtaking backdrop of the city's iconic Pier Head, 2026 marks the festival's 5th edition and features headline performances from the likes of Snow Patrol, Paul Weller, Cream Classical and Red Rum Club.



❤️ 🔍 🗒️ On the Waterfront 📌

Africa Oyé

Sefton Park
20-21 Jun 2026

The UK's largest celebration of African music and culture returns to Sefton Park this summer. The festival hosts artists from nations right across Africa and music from South America and the Caribbean with Salsa, Soca and Reggae.

Magic WKND

Hill Dickinson Stadium
4-5 Jul 2026

Magic WKND 2026 heads to Everton's world-class Hill Dickinson Stadium – the perfect stage for Rugby League's biggest summer festival.

Fiji vs England Nations Championship

Hill Dickinson Stadium
11 Jul 2026

Mick Byrne's Flying Fijians face England in what promises to be a spectacular occasion at Everton's world-class waterfront home. Expect vibrant fan zones featuring traditional music, food, dance and cultural performances.

The 154th Open

Royal Birkdale
12-19 Jul 2026

The world's best players will return to Royal Birkdale, for another compelling chapter in golf's original championship in July 2026.

We Are Wirral Festival

Birkenhead Park
18-19 Jul 2026

This two-day family festival is coming to Birkenhead Park. Expect the best music, activities, entertainment, food and drink for all the family to enjoy.

Salt & Tar Weekender

Lock & Quay
14-17 Aug 2026

Salt & Tar are welcoming huge acts to their stage once again this summer, including headline performances from Billy Ocean to The Waterboys, The Saw Doctors and Nile Rodgers & Chic.

Events

In The Park Presents Lewis Capaldi

Sefton Park
15 Aug 2026

In the Park makes its highly anticipated return to Liverpool's Sefton Park with global superstar Lewis Capaldi announced as headliner.

Southport Flower Show

Victoria Park
20-23 Aug 2026

Prepare to be inspired by breathtaking show gardens, stunning floral displays, and expert gardening advice that will ignite your passion for plants at the UK's largest independent flower show.

International Beatleweek

City Wide
26 Aug-1 Sep 2026

International Beatleweek Festival, celebrates the music of the most famous pop group the world has ever known, The Beatles. In the city where it all began, Liverpool.

2026 International Festival of Glass

The World of Glass
27-31 Aug 2026

The International Festival of Glass will feature a mix of masterclasses, demonstrations, lectures, exhibitions, and other activities to celebrate the art of glassmaking.



Southport Flower Show

Southport Air Show

Southport Beach
29-30 Aug 2026

Renowned as one of the UK's premier air displays, Southport Airshow offers an accessible, world-class spectacle on the Southport coastline.

British Musical Fireworks Championships

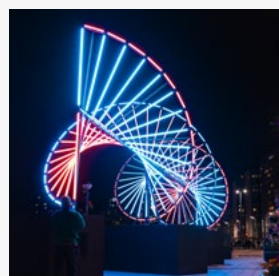
Victoria Park
26-27 Sep 2026

A spectacular end-of-summer event combining fireworks, music and live entertainment. Teams compete to choreograph stunning pyrotechnic displays to music.

River of Light

Liverpool Waterfront
23 Oct-1 Nov 2026

Liverpool's much-loved light festival is back. Get ready for brand new light installations and magical moments along the iconic waterfront, all for free!



River of Light

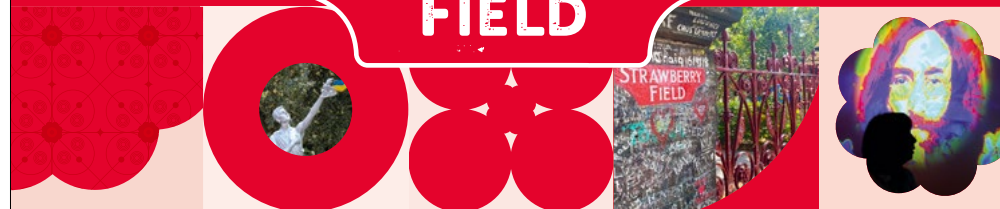


River of Light



Explore beyond the famous gates

STRAWBERRY FIELD



Visit Strawberry Field, the award-winning attraction in the place immortalised by The Beatles hit song 'Strawberry Fields Forever'



Book your visit today
strawberryfieldliverpool.com
info@strawberryfieldliverpool.com

Follow us [f](#) [@](#) [t](#) [x](#)



The Salvation Army is a Church and registered Charity in England (214779), Wales (214779), Scotland (SC009359) and the Republic of Ireland (CHY6399)



Culture

History, creativity and community collide in Liverpool - and the result?

A cultural playground bursting with character, colour and inspiration around every corner.

Museums & Galleries

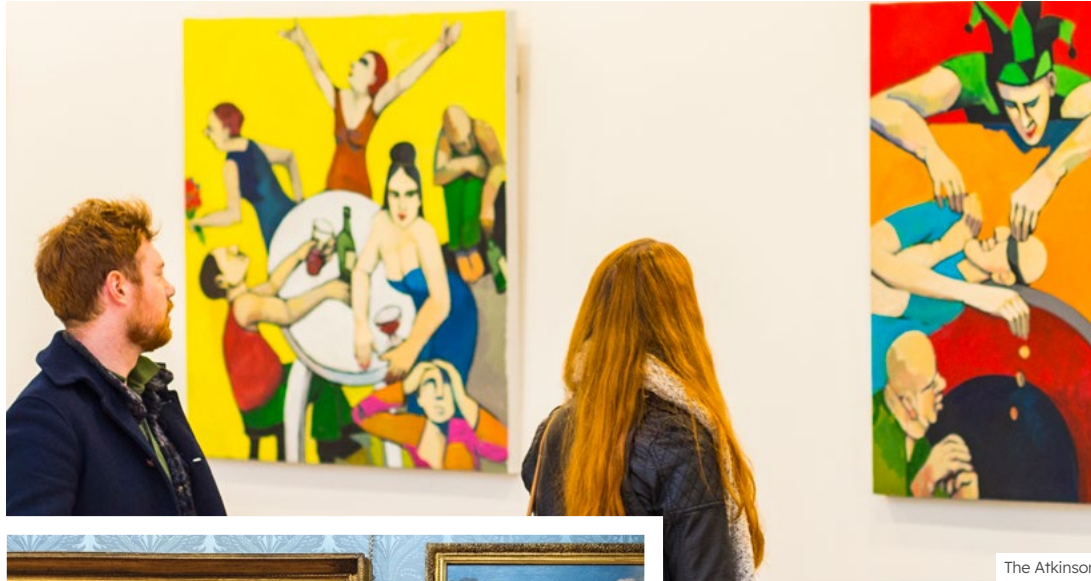
Museum of Liverpool
Discover the story of the city through engaging, hands-on displays covering everything from football to industry. It's the perfect place to understand what truly shapes Liverpool's identity.

World Museum
From dinosaurs and Ancient Egypt to outer space and an aquarium, this is an exciting all-in-one destination that's ideal for curious young minds.

Walker Art Gallery
Journey through six centuries of art, from iconic paintings to striking sculptures. A standout destination for fans of both historic and modern masterpieces.

Lady Lever Art Gallery
Step into an elegant setting filled with one of the UK's finest collections of fine and decorative art, beautifully displayed in a grand historic space.

Scan me to find out more



The Atkinson



Walker Art Gallery

Tate Liverpool x RIBA North
A dynamic centre for contemporary creativity, showcasing bold exhibitions, innovative installations and cutting-edge architecture.

FACT
A globally recognised hub where art, film and technology collide. Expect immersive cinema, digital installations and thought-provoking exhibitions.

The Bluecoat
Rich in character and history, this vibrant arts centre hosts exhibitions and events, and proudly holds its place as the UK's oldest continuously running arts venue.

The Atkinson
Home to thousands of artworks, many by local creators, alongside a lively programme of theatre, music and creative workshops for all ages.

Sudley House
Experience Victorian life through the former home of collector George Holt, where fine art is displayed within beautifully preserved period rooms.

Williamson Art Gallery
A lesser-known treasure offering a diverse mix of British and European works, with a strong emphasis on regional artists and heritage collections.

Open Eye Gallery
Dedicated entirely to photography, this unique space champions visual storytelling - and entry is completely free.

Icons Only
Discover the stories, spaces and experiences behind the region's most iconic landmarks.

The Royal Liver Building
Nothing captures the spirit of Liverpool quite like the Liver Birds, perched high above the waterfront with quiet confidence. Step inside for an immersive tour with Royal Liver Building 360 that brings the city's history to life, then climb towards the clock towers for unforgettable views across the river.



The Royal Liver Building

ROYAL LIVER BUILDING 360 TOUR

liverbuildingtour.com



Explore Liverpool's landmark building!

Royal Liver Building 360 gives takes visitors on a fully guided tour of the world famous Royal Liver Building.

Y Experience breathtaking views across the whole of the Liverpool City Region and beyond from the 15th floor viewing platform.

Y A unique and immersive audio visual experience brings the recent history of Liverpool to life, set to the atmospheric ticking of the clocks in the original mechanism room.

Y Get up close to the cities most famous residents, The Liver Birds and learn about their sculptor and creation.

Y NEW for 2026 see the new interactive clock and video wall in the visitors centre

Book your tickets today!



St George's Hall

A neoclassical masterpiece, St George's Hall is known as the heart of the city. Set on the plateau beside the World Museum and historic library, it anchors one of Liverpool's grand civic spaces. Inside, wander the Great Hall, explore the former cells and courts, or drop into exhibitions, tours and concerts. There's always something new to experience in this iconic landmark.

Another Place

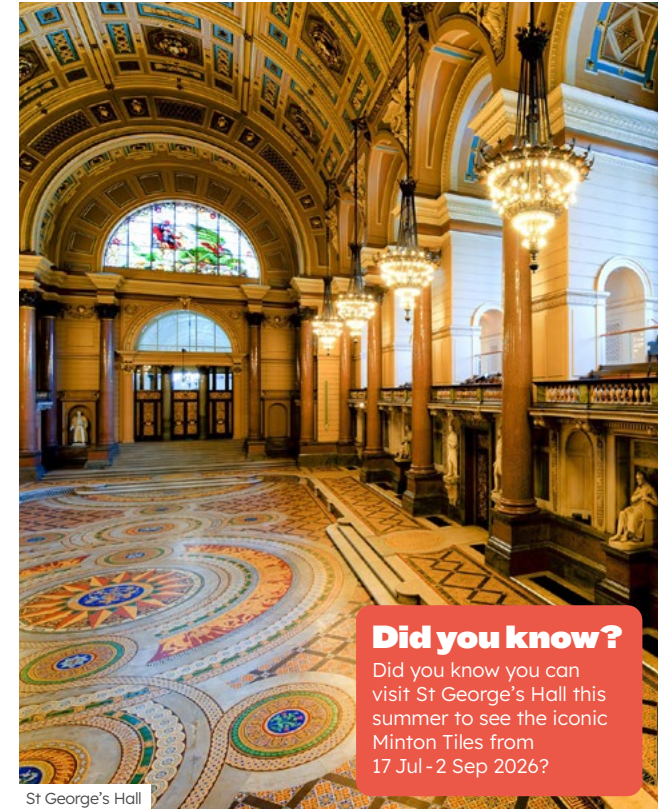
Along Crosby Beach, Antony Gormley's hauntingly beautiful installation feels both still and alive. One hundred cast-iron figures stand facing the horizon, each slowly changing with the tide and light. Walk the shoreline to see them revealed and hidden again, then linger to watch the sun set behind their stoic silhouettes.

Port Sunlight

Port Sunlight offers a gentle step back through time. Wander leafy streets lined with Arts and Crafts homes, each with its own charm and flourish. Visit Port Sunlight Museum to explore the village's origins, then lose yourself in the elegance of the Lady Lever Art Gallery.

Liverpool Cathedral

Liverpool Cathedral, Britain's largest, is known for its soaring Gothic arches and impressive stained glass. For a deeper look behind the scenes, the Above & Beyond Tour leads you into seldom-seen spaces and up towards the tower, with expert guides bringing its century-long construction to life.



St George's Hall

Did you know?

Did you know you can visit St George's Hall this summer to see the iconic Minton Tiles from 17 Jul - 2 Sep 2026?



Port Sunlight

Shakespeare North Playhouse

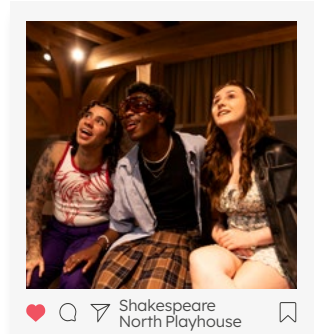
Prescot's revival has been powered by creativity, with the Shakespeare North Playhouse as its sparkling centrepiece. Designed with Elizabethan inspiration, the theatre offers performances, workshops and tours that bring Shakespearean history to life. The surrounding town is perfect for a relaxed stroll, full of independent shops and cafés.

Liverpool Metropolitan Cathedral

Rising like a crown above the city, Liverpool Metropolitan Cathedral blends bold modern design with a warm, uplifting sense of welcome. Step inside to discover soaring space and radiant colour or pause outside to admire its striking silhouette and wide city views. This iconic landmark is also a perfect gateway to Hope Street, the cultural spine that links many of Liverpool's most inspiring places.

The Cavern Club

The legendary birthplace of The Beatles, where live music still fills the intimate space and Liverpool's rich musical heritage comes alive.



Shakespeare North Playhouse

Dream Sculpture

In St Helens, Dream rises from the former Sutton Manor Colliery like a serene beacon. This striking white sculpture, shaped as a peaceful head gazing skyward, rewards visitors with a short woodland walk that opens into wide, leafy views. It is ideal for thoughtful wandering, artistic snapshots, relaxed picnics and serene contemplation.

Sefton Park Palm House

A stunning Victorian glasshouse set in the heart of Sefton Park, hosting everything from live music and cultural events to peaceful moments surrounded by exotic plants.



Sefton Park Palm House



Halton Castle

Perched high on Halton Hill, Halton Castle, a ruined medieval fortress, is the borough's most historic landmark. Visitors can enjoy sweeping views across the River Mersey and the Cheshire Plains, then make a day of the surrounding heritage: pairing the hilltop walk with nearby Norton Priory Museum & Gardens or exploring Runcorn Old Town and the Bridgewater Canal for an easy, activity-filled visit.



Discover the Ultimate History of British Rock and Pop

As the UK's only museum dedicated to celebrating British music, the British Music Experience boasts an unrivalled collection of memorabilia, stage outfits, instruments, images and footage.

Visitors can also get hands-on in the Interactive Studio with a range of instruments, a dance studio and vocal booth.

The Star Café and Merch Store are located off the main museum foyer, and are open to the general public (no ticket required).

Save when you book online with each general entry ticket valid for 12 months.



Located in The Cunard Building on Liverpool's historic waterfront overlooking the Mersey.

Cunard Building, Pier Head, Liverpool, L3 1DS

britishmusicexperience.com



The British Music Experience is a registered not-for-profit charity. The BME is the UK's Museum of Popular Music with the purpose of advancing the education and appreciation of the art, history and science of music in Britain (registered charity no.1125752).

Music

Liverpool doesn't just play music, it lives it. From cosy gigs to arena anthems, the city's music scene never misses a note.

Music Venues

From intimate gig spots to grand concert halls, here are the top places to catch live music across the city region.

Invisible Wind Factory

A bold and brilliant creative space on the North Docks that hosts everything from live gigs to full-on immersive shows. Expect lasers. Lots of lasers.

24 Kitchen Street

Tucked away in the Baltic Triangle, this intimate venue is a haven for underground music fans and boundary-pushing beats.

Future Yard

Just across the River Mersey, this trailblazing venue is putting Birkenhead on the musical map with its fresh programming and community vibes.

Salt & Tar

An outdoor venue with serious star power. It's already welcomed the likes of Tom Jones, the Sugababes and Billy Ocean and it's just getting started.

Scan me
to find
out more



The British Music Experience



Did you know?

You can sing and dance the night away on the Mersey Ferry's Evening Cruises? Take in stunning views of Liverpool and Wirral, watch the sunset, and enjoy live music, DJs and tribute bands on the world-famous Mersey Ferry.



Cilla Black Statue, Mathew St

M&S Bank Arena

The M&S Bank Arena sits right on the waterfront and draws huge touring names, UB40, The Courteeners and The Pussycat Dolls are all performing in 2026.

Liverpool Philharmonic Hall

For something a little more classical, head to this stunning Grade-II listed venue on Hope Street which is home to one of the oldest orchestras in the world.

The Jacaranda

A legendary music venue famous for its live gigs and historic ties to The Beatles.

The Tung Auditorium

A versatile performance space hosting concerts, talks, and community events in the heart of Liverpool's cultural scene.

Music Attractions

Liverpool is the ultimate pilgrimage for music fans. Here's how to explore the city's musical heritage.

The British Music Experience

Step inside the British Music Experience at the Cunard Building and walk through music history. From Bowie to The Spice Girls, explore decades of iconic costumes, instruments and memorabilia in this hands-on, interactive museum.

Mendips & 20 Forthlin Road

Step inside the childhood homes of John Lennon and Paul McCartney with a guided National Trust tour – perfect for die-hard fans who want a peek behind the curtain.

Liverpool Beatles Museum

The Liverpool Beatles Museum houses one of the largest Beatles collections in the world, featuring over 1000 never before seen authentic items across three floors.

Magical Mystery Tour

Hop aboard the famous brightly-coloured Magical Mystery Tour bus for a two-hour ride through the band's hometown haunts, from Penny Lane to George's childhood home.

The Beatles Story

Located at Royal Albert Dock, this immersive museum is packed with memorabilia, recreated sets (hello, Abbey Road!) and plenty of stories from their rise to global stardom.

Strawberry Field

Once a children's home and now a beautiful visitor attraction, this tranquil spot inspired one of John Lennon's most iconic songs.

Penny Lane

Yes, it's real and yes, you can get your photo with the street sign. Look out for the barber shop, the roundabout and the fire station too.

Mathew Street

Grab a drink and toast to rock and roll history on this famous street in the likes of The Grapes and Erics.





The story of the band that changed the world.

The Beatles Story is Liverpool's award-winning attraction, telling the story of the world's greatest band.

Located in the Fab Four's hometown on the stunning waterfront at the Royal Albert Dock, Liverpool, The Beatles Story takes visitors on an immersive journey through the lives, times, culture and music of The Beatles.

With exciting new displays and memorabilia, visitors can hear the story unfold through multimedia audio guides available in twelve different languages, narrated by John Lennon's sister, Julia.

#beatlesstory
beatlesstory.com



Tours

Fancy a tour around Liverpool? Check out a small selection of what the city has to offer

Shiverpool

Dive into Liverpool's darker side with this atmospheric evening tour, uncovering ghostly tales and spine-tingling stories from the city's past.

Liverpool Cycle Tours

See more of the city on two wheels with guided bike tours that take in Liverpool's landmarks, waterfront and hidden corners.

Geoff Drake Photography Tours

Capture Liverpool through a creative lens on expert-led photography walks, perfect for sharpening your skills while exploring the city.

Liverpool Beatles Tours

Follow in the footsteps of The Beatles with immersive tours visiting the iconic places that shaped the band's story.

Liverpool Famous Walking Tours

Discover the city's rich history, culture and characters on engaging guided walks led by passionate local experts.

Reel Tours

Step into the scenes of your favourite films and TV shows with tours showcasing Liverpool's starring role on screen.



Shiverpool

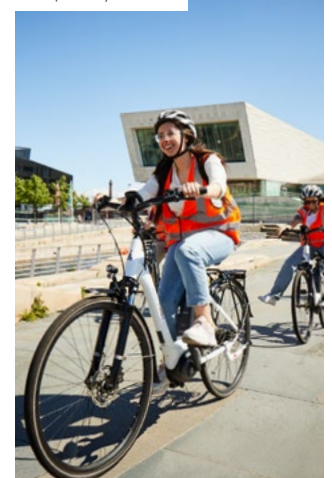
The City Explorer

Sit back and enjoy a flexible sightseeing experience with hop-on, hop-off bus tours covering Liverpool's must-see attractions.

Love Liverpool Tours

Discover the best of Liverpool with guided tours specialising in The Beatles, pubs, city highlights and bespoke tours.

Liverpool Cycle Tours





Sport

Sport is more than just a game in Liverpool, it's a way of life.

Football Fever

This is a city where football pulses through the streets. With two football giants - Liverpool FC and Everton FC - it's no wonder matchdays feel electric.

At Anfield, the legendary home of the Liverpool FC Men's team, you can step behind the scenes on a stadium tour and then explore The LFC Museum, immersing yourself in the club's rich history from past to present.

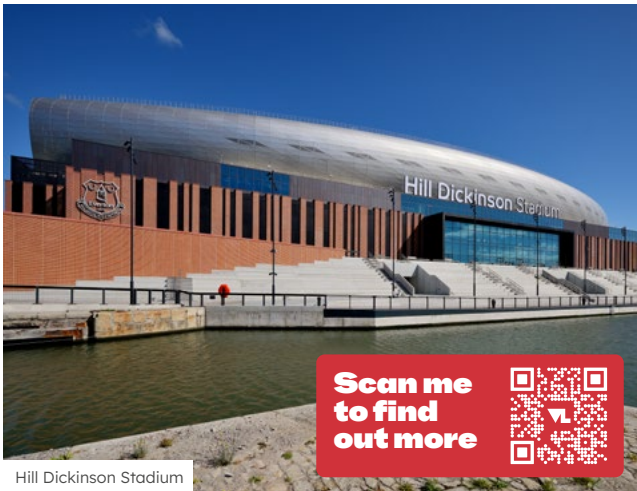
For those who don't mind heights, you can take on the Anfield Abseil. Take in views out from across the Main Stand before heading on a 100ft abseil down past Liverpool's famous crest.

Over at Hill Dickinson Stadium, the brand-new home of the Everton Men's team, you can experience a behind-the-scenes tour of this state-of-the-art stadium on the banks of the River Mersey.

And it's not just the men's game that makes headlines here. On a visit to Liverpool, you can catch Liverpool FC Women in action at St Helens Stadium or cheer on Everton FC Women at the iconic Goodison Park. With both clubs competing in the Women's Super League, it's a brilliant way to experience top-class football and the city's unbeatable sporting atmosphere.



Liverpool FC Stadium Tours



Hill Dickinson Stadium

Scan me to find out more



THIS IS HISTORY LEGENDARY ADVENTURE EXCLUSIVE ANFIELD

Explore the most successful Club in English Football.

Available in 13 languages, plus BSL.



liverpoolfc.com/tours



Hill Dickinson Stadium
TOURS

STEP INTO THE NEXT CHAPTER

Be part of the story with an official Stadium Tour

Explore the stunning Hill Dickinson Stadium, Everton FC's world-class new home on the banks of the River Mersey.

BOOK NOW



Rugby League

If you love your sport full-throttle, Rugby League in Liverpool City Region won't disappoint.

St Helens R.F.C.

The most successful Super League team of all time.

Widnes Vikings

One of the original founding clubs from way back in 1895.

Golf

Ready for a hole in one? You're in the right place. Liverpool City Region is home to some of the UK's best coastal courses.

Royal Liverpool, Hoylake

A historic links course with sweeping views and a proud Open Championship legacy, Royal Liverpool offers a true test of golf on the Wirral coastline.

Royal Birkdale, Southport

Renowned for its dramatic dunes and championship pedigree, Royal Birkdale is one of England's finest links courses and home to The 154th Open Championship in 2026.

Horse Racing

If there's one thing Liverpool does with flair, it's race weekend.

Aintree Racecourse

Aintree Racecourse is home to the world-famous Grand National, held every April since 1836. Hats on, bets placed, excitement guaranteed!

Haydock Park

Haydock Park, meanwhile, is another local gem with a jam-packed calendar of race meets throughout the year.

Did you know?

Liverpool will host the finish of the second stage of the Tour de France Grand Départ in July 2027?



Royal Birkdale, Southport



Aintree Racecourse



Families

Looking for a city break that keeps everyone happy – from toddlers to teens, Liverpool City Region delivers family adventures by the bucketload.

Adventures in Liverpool City Region

Liverpool Watersports Centre

Enjoy everything from an inflatable aquapark, open water swimming, paddleboarding, kayaking, sailing, and swan pedalos for a day of watersports fun on Liverpool's Queens Dock.

Paddleboard The Royal Albert Dock

Royal Albert Dock is ideal for a first-time paddleboard adventure. Glide past the historic red brick warehouses and enjoy views of Liverpool's iconic waterfront. It is simple to learn, great fun for all ages and a brilliant way to see the dock from a new angle.

Kayak the Wirral Coast

Kayaking here means moving past quiet beaches, rugged headlands and wide-open water. With sheltered spots and steady stretches, it is a welcoming adventure for beginners and seasoned paddlers alike.



Marine Lake, Southport

Sail in West Kirby

West Kirby Marine Lake is made for getting out on the water. Try sailing, windsurfing, paddleboarding or kayaking, with easy taster sessions and equipment hire available through Wirral Watersports Centre.

Marine Lake Southport

From self-drive motorboats and high-speed jet rides to gentle cruises and family-friendly pedalos, there are plenty of simple ways to get out on the water.

New Brighton

The promenade at New Brighton is full of easy-going charm, from sandy beaches to sea-sprayed viewpoints. Pause to watch boats drift across the horizon or follow the curve of the sea wall as the tide moves in.

Formby Beach

Formby Beach is a peaceful stretch of sand framed by tall dunes and whispering pine woods, opening into big skies and gentle waves that invite you to slow down, wander barefoot and soak in the calm, coastal air.

Relax at the Wyld Sauna

Wyld Sauna brings a unique burst of Nordic calm to Liverpool's Princes Dock, offering a floating sanctuary of heat, ice baths and open-water plunges with incredible waterfront views.

Splash Tours Liverpool

Explore Liverpool by land and water in one tour with Splash Tours Liverpool. Head onboard the amphibious vehicle to see the city's iconic sights before splashing down into the Royal Albert Dock for a float around the famous landmark.

HAVE A WILD DAY OUT!



Take on the UK's longest Safari Drive and come face-to-face with incredible animals from around the world. Then keep the adventure going on the Foot Safari, with live animal talks, exciting displays and fun-filled attractions for the whole family.

ONE TICKET
TWO ADVENTURES
A FULL DAY OUT



BOOK AHEAD
ONLINE TO SAVE



Martin Mere Wetland Centre

Spot rare birds, butterflies and bugs in this peaceful slice of nature. Enjoy walking trails, birdwatching hides, and family-friendly outdoor activities in a tranquil setting.

Eureka! Science + Discovery

Science, maths and engineering have never been this exciting. Located at the Seacombe Ferry Terminal, Eureka! is a hands-on wonderland designed to spark curiosity in all ages. Think slime, sounds, space and surprises around every corner.

Mersey Ferry

Climb aboard the Mersey Ferry for a 50-minute voyage packed with skyline views, salty air and stories of Liverpool's maritime past. As the ferry glides along the river, families can spot famous landmarks, hear tales of the city's global connections and watch the waterfront unfold from a brand-new angle.

Knowsley Safari

Go wild spotting lions, rhinos, giraffes and more on a real-life safari tour. Drive through expansive enclosures and get closer than ever to some of the world's most iconic wildlife.

World Museum

Venture into the World Museum and journey from the deep sea to outer space in a single visit. Watch colourful fish drift through the aquarium, then settle into the planetarium for a peaceful trip across the night sky.



Mersey Ferry



Knowsley Safari

World of Glass

Discover the art, history, and craft of glassmaking, with live demonstrations and interactive exhibits at the home of glass in St Helens.

Adventure Coast Southport

Adventure Coast Southport is a much-loved theme park with four themed lands and a host of family attractions with a history stretching back to the late 1800s!

Catalyst Science and Discovery Centre

An interactive science centre and museum devoted to chemistry and how the products of chemistry are used in everyday life. Their mission: to inform, educate and inspire.

Scan me to find out more



The Upside Down House

Ever walked on the ceiling? You will here! Step into this topsy-turvy house for a whirlwind of silly fun and flip-your-perspective family selfies.

Otterspool Adventure

Otterspool's indoor soft play is packed with slides, climbing zones and colourful chaos. Ideal for little ones to burn off energy, rain or shine.

Imagine That!

Four themed zones offer messy crafts, science experiments, roleplay and slime. Imagine That! is a hands-on indoor adventure for kids aged 1-10.

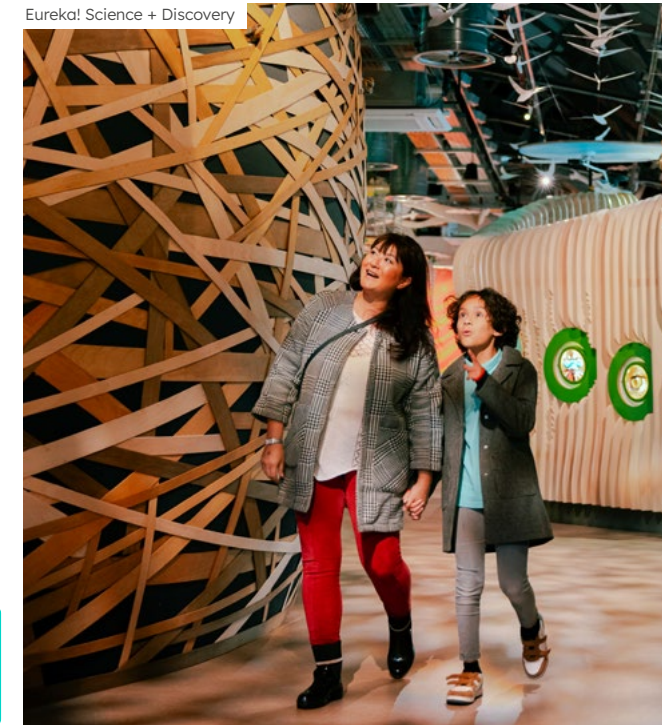
Chester Zoo

Just outside the city, this world-class zoo is home to over 20,000 amazing animals. Explore immersive habitats, exciting daily talks, and inspiring conservation projects.



Adventure Coast, Southport

Eureka! Science + Discovery



WHERE LIFE



COMES TO LIFE

Book your
visit today



Feel it from the moment you arrive. The splash of penguins diving. The sound of lions roaring. This is more than a day out. It's a place where over 30,000 animals thrive, where memories are made, where pioneering conservation work happens every single day. **Awaken your senses - because here, life flourishes.**



Taste Liverpool City Region

From street food to fine dining, Liverpool's food scene is as bold, diverse and as full of flavour as the city itself.

Outdoor dining

Royal Albert Dock

Head to the famous dock home to a range of restaurants and bars with outdoor seating, perfect for soaking up the sun. Try Middle Eastern-inspired dishes at Maray, traditional Neapolitan pizza at Rudy's, Catalonia-inspired tapas dishes at Lunyalita or a drink on the terrace at the Long Shot Bar.

Baltic Triangle

The Baltic Triangle is the perfect place to enjoy a tasty meal al fresco. Try The Baltic Market for street food from local independents, BOXPARK for outdoor vibes in the sun or the Cains Brewery Village for a range of venues to enjoy the summer weather.

Liverpool ONE

Liverpool ONE has a whole range of options for you to dine outside. Have a look at Gordon Ramsay Bread Street Kitchen, The Botanist, Smoke and Dough and Loretta's after a bit of shopping.



Royal Albert Dock



BOXPARK, Liverpool



Castle Street

The Castle Street area is a hub for outdoor food and drink in the city, with everything from El Gato Negro to Pho, Zeus Taverna, Bacaro, and the brand new Dishoom Permit Room to enjoy this summer.

Bold Street

Another foodie hotspot in the city, Bold Street is home to a whole host of food and drink options from around the world. Sit outside Albert's Schloss for Bavarian-inspired dishes, head to Mowgli for Indian street food, or Bold Street Coffee for a tasty breakfast in the sun!

Rooftop Bars

Oh Me Oh My

A hidden gem overlooking the Three Graces, Oh Me Oh My offers a serene rooftop terrace where you can enjoy drinks with some of the best skyline views in Liverpool.

Gravity MAX

Set within Liverpool ONE, Gravity MAX features a lively rooftop bar offering high-energy entertainment in the sun.

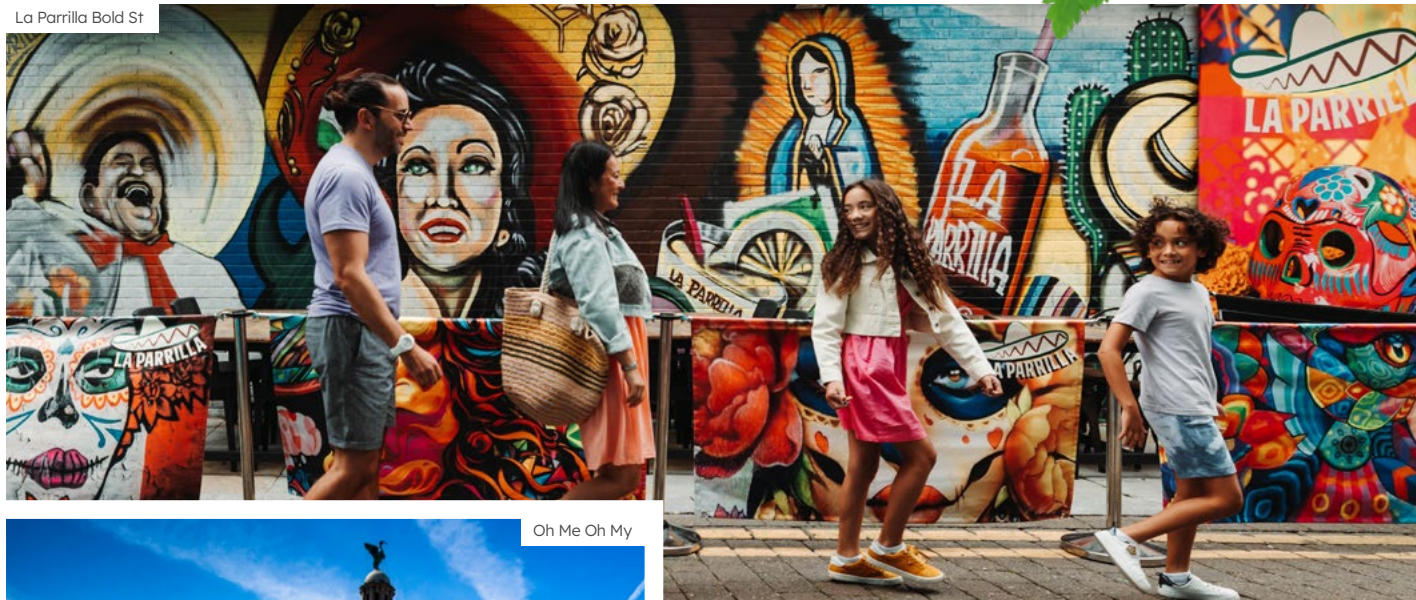
Blackstock Roof Garden

The Mediterranean-themed rooftop bar is the perfect place to soak up the sun and dance under the stars at one of the city's popular street food markets.

360 Sky Bar

Perched high above the city, 360 Sky Bar delivers sweeping views across the River Mersey and a sleek atmosphere ideal for sunset cocktails.

La Parrilla Bold St



Oh Me Oh My



PINS Social Club

PINS' rooftop terrace, known as The Roof, combines outdoor bars, games, and a vibrant social vibe, making it a fun, open-air hangout in the heart of the city.

Beach Side Eats

Bus Yard Crosby Beach

Enjoy street food, cocktails and good vibes at the Bus Yard on Crosby Beach this summer. Take a walk down the sandy shores and see the famous Iron Men statues whilst you're there.

Penelope's Birkdale

Just a stone's throw from Southport's coast, Penelope's sits on the edge of Victoria Park and a perfect place to enjoy brunch, lunch, an evening meal or some cocktails in the seaside town.

The Grand

Sitting within walking distance of Southport's coast, The Grand invites you back into the glitz and glamour of Southport's yesteryear with elegant cuisine to dine in style.

Fort Perch Rock

The coastal defence battery from the 1820s in New Brighton is now home to a permanent maritime display, escape room and The Mess cafe, perfect for enjoying something to eat on Wirral's coast.

Rockpoint Records

Find Rockpoint Records in New Brighton, not far from the coastline. The record store is also home to a bar and coffee house, so you can grab a drink before heading to the beach.

Rudy's Pizza-Castle St



Taste Liverpool City Region

Where to try Scouse

You can't visit Liverpool without trying the city's local dish!

Ma Boyles

A traditional pub in the city centre where you can enjoy hearty, home-cooked scouse in a relaxed, welcoming atmosphere.

Liverpool Cathedral

After exploring this iconic landmark, stop by the on-site Welsford Bistro to taste a comforting bowl of scouse in the historic setting.

The Cavern Club Restaurant

Famous for its music heritage, this venue serves up the classic Liverpool dish scouse, letting you pair local cuisine with the city's legendary Beatles vibe.

Royal Court Theatre

Did you know you can enjoy a bowl of scouse whilst watching a show at the theatre?

Food Markets

Feeling indecisive? Liverpool's buzzing food markets are the answer to your cravings.

The Baltic Market

In the heart of the Baltic Triangle this warehouse turned food market houses a vibrant mix of independent traders serving up everything from gourmet burgers to halloumi fries, all with a side of live music and good vibes.



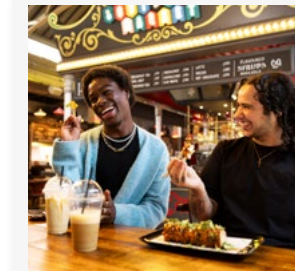
Duke St Food & Drink Market

Duke Street Food & Drink Market

Bringing a touch of elegance to your foodie adventure. Think artisanal dishes, stylish surroundings and a buzzing social atmosphere perfect for sharing plates and sipping cocktails.

Blackstock Market

Part food court, part night out, and completely delicious. Add in their famous comedy club, music, events and entertainment and you have yourself the perfect place to enjoy something to eat.



Southport Food & Drink Market



CHEAP TRAINS TO LIVERPOOL

SAVE UP TO 77%

Grab your **Cheap Train Tickets** at Inr.uk/liverpool

PAY LESS, DO MORE

London Northwestern Railway

*when you book in advance

MERSEY
FERRIES



Tripadvisor
Travellers'
Choice Awards
2025

Ferry 'Cross The Mersey

on a River Explorer Cruise



Book online now
merseyferries.co.uk/rec



Halton Hotspots

Tucked between the river, the canals and the rolling green edges of Cheshire, Halton is one of Liverpool City Region's most surprising delights.

From ancient ruins wrapped in woodland calm to waterside parks alive with birdsong, this is where countryside charm meets creative culture.

Whether you're wandering through history, catching live theatre or soaking up estuary light on a long summer afternoon, Halton adds something beautifully refreshing and utterly memorable to any visit.

Norton Priory Museum & Gardens

A peaceful hideaway in Runcorn, Norton Priory offers atmospheric ruins, striking undercroft and calming woodland trails. The Walled Garden brings seasonal colour, making it a soothing stop for slow exploration.

The Brindley Theatre

Set beside the Bridgewater Canal, The Brindley is a bright cultural hub alive with theatre, comedy, music and exhibitions. After a visit, stroll the nearby High Street to discover Unlock Runcorn's canal boats, the tranquil Wat Phra Sing Temple and Peace Garden, and the impressive Dukesfield Murals.

Norton Priory Museum & Gardens



The Brindley Theatre



Catalyst Science Discovery Centre & Spike Island

Perfect for families, Catalyst blends hands-on science with stories and curiosity. Step outside and Spike Island opens into wetlands and riverside paths ideal for gentle wanderers or keen explorers. The Trans Pennine Trail passes right through, offering miles of scenic adventure.

Wigg Island Community Park

A wide-open green space with big skies and peaceful riverside views. Its easy paths make it ideal for walking, cycling or taking a moment of stillness beside the water.

Runcorn Hill Park & Nature Reserve

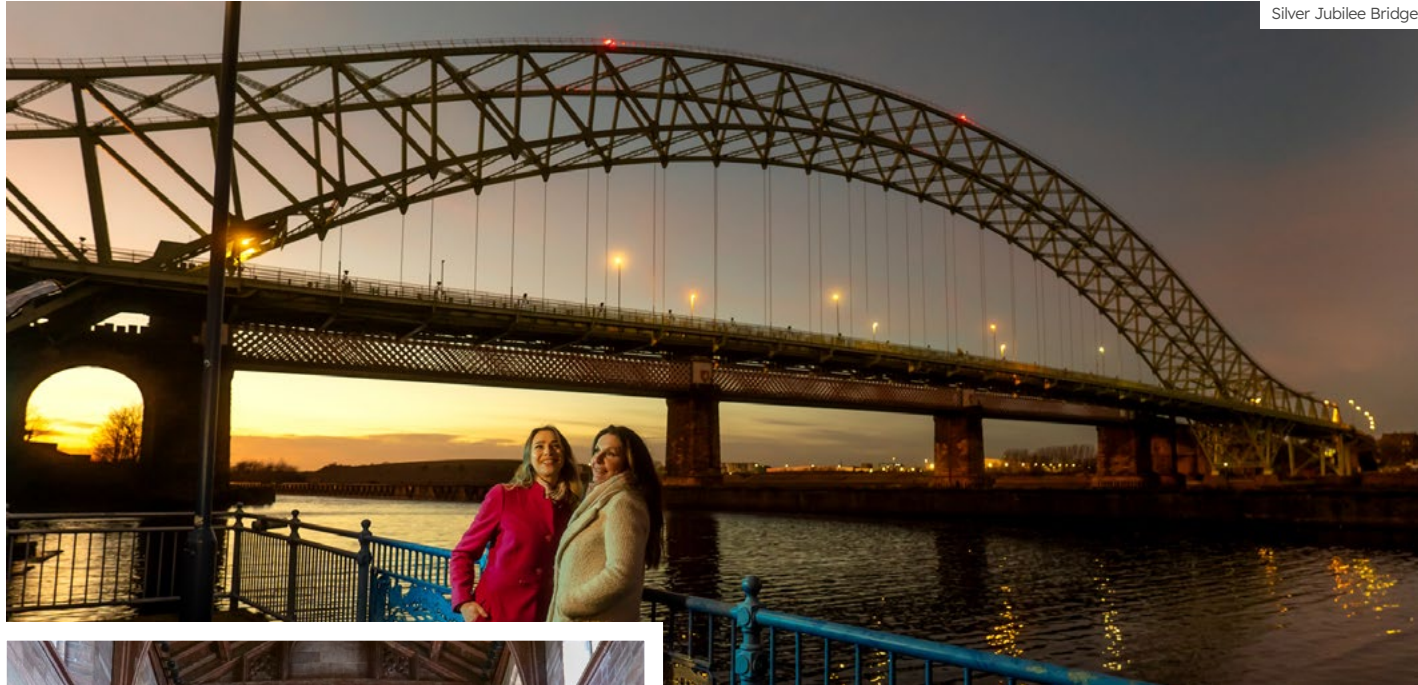
Loved by locals, this park blends rocky trails, woodland and bright open views. Families, dog walkers and nature lovers will find plenty to explore, with great cafés like Esposito's and Bakehouse nearby.

Silver Jubilee Bridge & Mersey Gateway Views

Two iconic bridges frame some of Halton's most photogenic views. Whether seen in daylight or glowing at dusk, they create spectacular riverside scenery.

The Lewis Carroll Centre

Step inside the village that shaped Lewis Carroll and explore displays, stories and local history that bring his wonderfully curious imagination to life. It's a charming stop where visitors can discover the real roots of Wonderland, a place that proves adventure often begins with a single step into the unexpected.



Silver Jubilee Bridge



The Lewis Carroll Centre

Trans Pennine Trail - Halton Section

This peaceful stretch of the national trail offers a relaxed route for walkers and cyclists, far removed from the rush of daily life. Meandering through open countryside and shaded hedgerows, it's ideal for a steady outing with friends or family.

Hale Village & the Childe of Hale

A picture book village with pretty cottages, heritage buildings and a famous local legend. Visit the Childe of Hale statue, then wander to the estuary for big skies and quiet views. The village's charming lanes, historic church and welcoming local businesses make it a place worth lingering in, with stories and scenery around every corner.

Halton Miniature Railway

A charming small-scale railway weaving through leafy woodland, offering a nostalgic touch of steam-era magic. Look out for local wildlife along the route, enjoy the playful whistles and the craftsmanship of the engines, and take in the simple pleasure of a ride that feels delightfully timeless.

Pickering's Pasture

A calm, scenic meadow overlooking the estuary, where wide skies and natural beauty create a peaceful escape. Follow the wildflower paths, bring a picnic or simply enjoy the sweeping views from the benches dotted along the trails.



Hale Village

Halton Hotspots

Hale Head Lighthouse

Standing at the edge of the Mersey, this atmospheric lighthouse offers a tranquil spot to pause and take in the vast horizon. The surrounding paths reveal shifting tides, sweeping coastal views and a sense of solitude that's hard to find elsewhere.

Runcorn Snow Sports Centre

A fun, family-friendly dry slope where beginners and experienced skiers can enjoy something a little different.

Victoria Park, Widnes

One of Widnes' most loved green spaces, Victoria Park blends lakeside views, colourful planting, play areas and peaceful paths. It's perfect for relaxed strolls, family time or simply unwinding in nature.

The Butterfly House, Victoria Park

A seasonal favourite, The Butterfly House is free to enjoy and open from early May to the end of September. Step inside for a burst of colour as butterflies drift among tropical plants, a gentle, uplifting experience for all ages.

Halton Music Trail - Beyond The Tracks

Step off the train and into decades of music history on this 4.6-mile trail linking Widnes and Runcorn stations. Follow 17 stops packed with legendary moments, from early Beatlemania to the Stone Roses' iconic Spike Island gig, with each story unlocked by QR code and voiced by local musician Lee Wylding. A brilliant, easy walk that brings Halton's musical heritage to life.



Victoria Park

The Butterfly House, Victoria Park

Scan me to find out more



EXPERIENCE THE CAVERN

LIVE THE STORY | FEEL THE BEAT | A TASTE OF ROCK N ROLL



✓ **THE WORLD FAMOUS CAVERN CLUB**
 Legendary live music venue where The Beatles performed 292 times.

✓ **MAGICAL MYSTERY TOUR**
 Live the story aboard the global award-winning Magical Mystery Tour, for an authentic journey through Beatles Liverpool.

✓ **THE CAVERN RESTAURANT**
 Rock n Roll inspired restaurant, showcasing local cuisine in the heart of the vibrant city.

✓ **INTERNATIONAL BEATLEWEEK FESTIVAL**
 The biggest and best Beatles festival in the world. One city, one week, one unforgettable experience.



SCAN ME

PLAN YOUR VISIT
cavernclub.com





Where to Stay

Looking for the perfect place to rest your head after a day exploring the region? There's everything from luxury stays to quirky pads.

Waterfront wonders

Wake up to stunning River Mersey views at Pullman, Malmaison, Heeton Concept Hotel, Crowne Plaza or Atlantic Tower Hotel Liverpool by Sunday, all nestled along the picturesque waterfront.

City centre hotspots

Stay in the heart of the action with Hilton, Maldron, Halyard, Ropewalks Hotel and School Lane Hotel, all just steps away from top attractions, restaurants, and shops.

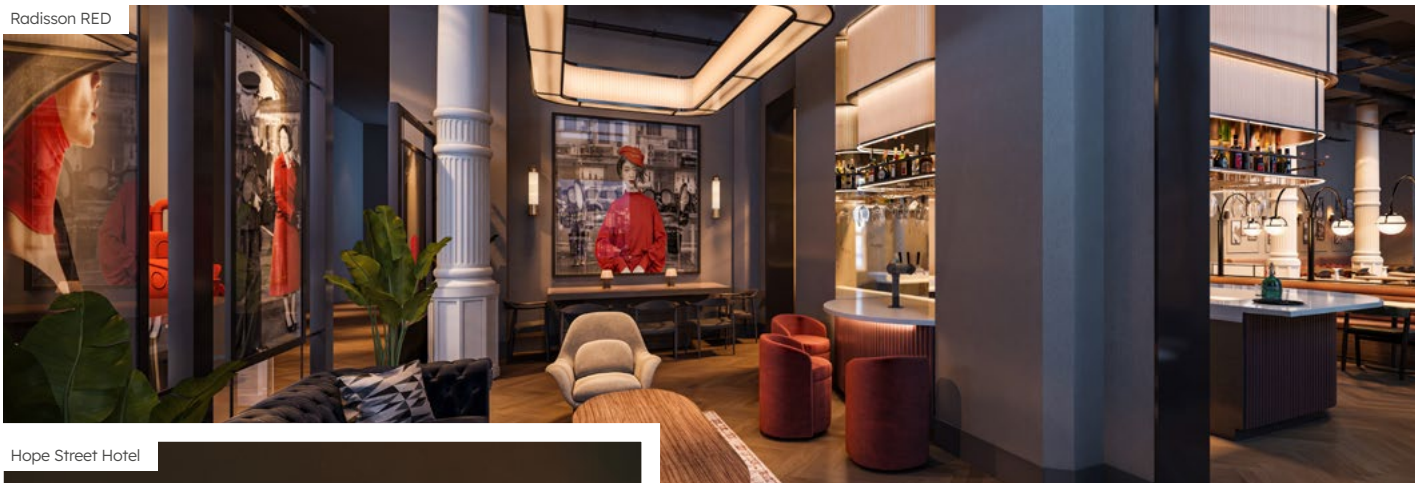
Stays with a twist

Go for something unique at Hard Days Night Hotel, a Fab Four-themed experience for Beatles fans in the heart of The Cavern Quarter.

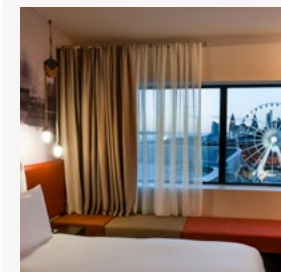
Scan me to find out more



Radisson RED



Hope Street Hotel



The Pullman

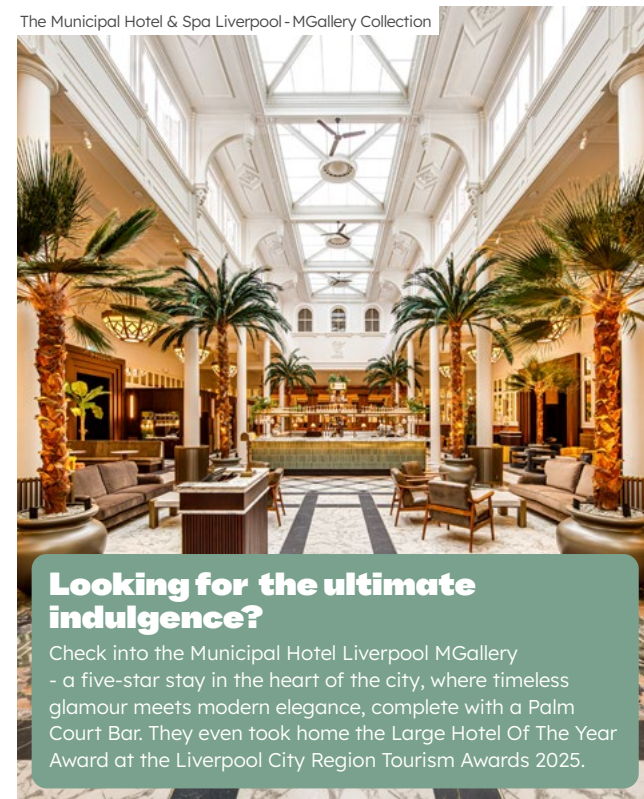
A Touch of Luxury

Looking to indulge? Liverpool is packed with sophisticated places to stay, perfect for those who enjoy a touch of luxury.

Set within the historic docklands, Titanic Hotel & Spa pairs striking industrial architecture with contemporary comfort, offering spacious rooms and impressive waterfront views. Over in the Georgian Quarter, Hope Street Hotel is a boutique favourite, loved for its welcoming atmosphere, stylish design and tranquil spa.

For something surrounded by history, Radisson RED Liverpool delivers bold, design-led interiors inside a beautifully restored Grade II-listed building. Meanwhile, INNSiDE by Meliá Liverpool brings a contemporary feel to the city, complete with sleek architecture and a stunning 360 Sky Bar.

The Municipal Hotel & Spa Liverpool - MGallery Collection



Looking for the ultimate indulgence?

Check into the Municipal Hotel Liverpool MGallery - a five-star stay in the heart of the city, where timeless glamour meets modern elegance, complete with a Palm Court Bar. They even took home the Large Hotel Of The Year Award at the Liverpool City Region Tourism Awards 2025.



Outside the City

Formby Hall Golf Resort and Spa is the perfect spot for golf lovers and spa-goers alike, set in gorgeous green surroundings with everything you need for a restful escape. Over at Thornton Hall Hotel & Spa, expect indulgent treatments, lush gardens and a seriously serene vibe.

If you're after something a little more unique, Hillbark Hotel is a luxury stay tucked away in a stunning Tudor-style mansion, while Leasowe Castle Hotel brings history and charm to the coast with its real-life castle setting.

Whilst in Haydock, the Mercure Haydock Hotel is a Georgian mansion-style property set in beautifully landscaped gardens, ideal for race-goers at Haydock Park Racecourse.



Hillbark Hotel



Formby Hall Golf Resort & Spa



Sunnyside Guest House

This award-winning B&B in the heart of Southport offers quality rooms, a delicious breakfast and a warm welcome from the family-run venue named B&B Of The Year in the VisitEngland Awards For Excellence 2025.

A Home From Home

Want more space, flexibility and even a kitchen to call your own? Serviced apartments are the way to go!

01

Happy Days Apartments

Serviced apartments in Liverpool City Centre offering a home-from-home experience.



02

Stay City

With two locations in Liverpool, it's the perfect base to explore the region with all your home comforts.



03

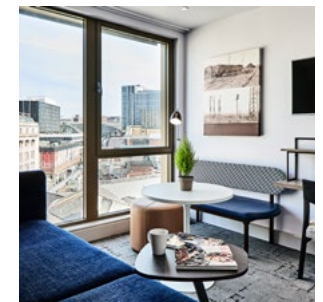
Staybridge Suites

Full equipped suites with kitchens and living areas in the heart of Liverpool city centre.

04

Citadines

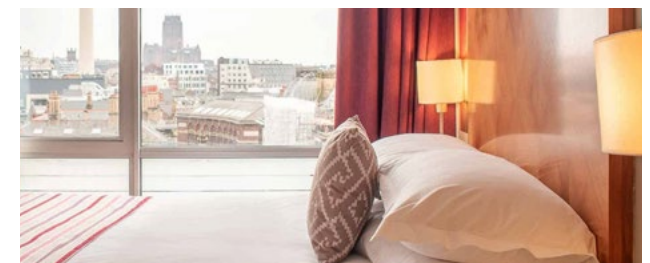
Enjoy the freedom of a serviced apartment with the convenience of hotel-style service.



05

Premier Suites

Serviced apartments in the heart of Liverpool, with fully equipped kitchens for all your catering needs.





Shopping

From trend-chasers to vintage-hunters, Liverpool's shopping scene has something for everyone.

Liverpool ONE

Right in the heart of the city, Liverpool ONE is where high street favourites meet designer must-haves in a stylish, open-air setting. You'll find everything from trusted names like John Lewis and Marks & Spencer to fashion staples such as Zara and UNIQLO. Beauty lovers are equally spoiled, with cult favourites like Bath & Body Works and Sephora adding a touch of indulgence to your visit.

But Liverpool ONE is more than just a shopping destination - it's a place to spend the whole day. Wander shops, relax in Chavasse Park, or take a break with a film at the on-site cinema. When it's time to refuel, you'll have your pick of over 45 restaurants, cafés and bars, offering everything from quick bites to leisurely dining. With regular events, seasonal pop-ups and a lively atmosphere all year round, Liverpool ONE delivers a shopping experience that goes far beyond the bags.



Independent Shopping

Discover Liverpool's vibrant independent shops from vintage clothing to handmade gifts, unique and quirky homeware.

The Nest

A creative gift shop packed with locally made art, prints, jewellery and handmade treasures from Liverpool's best makers.

Utility

Sleek, stylish and full of personality - the go-to for design-led homeware, stationery and quirky gifts.



Utility, Bold St

Big Brands, Big Style

Head to Church Street and Lord Street to continue your shopping at the likes of Primark, H&M, Lush and River Island or head over to Flannels, their flagship store, home to designer brands, Barry's gym and Bacino Italian restaurant.



Flannels



The Nest



News From Nowhere

Liverpool's much-loved radical bookshop, celebrating independent thought, activism and community spirit since the 1970s.

Red Brick Vintage

A treasure trove of vintage fashion, retro furniture and independent traders inside the bustling Cains Brewery Village.

69A

One of the city's oldest vintage stores, famed for its carefully curated mix of fashion, antiques and collectables.

Resurrection

A Bold Street icon mixing streetwear, vintage fashion and independent labels in one effortlessly cool space.

Probe Records

A Liverpool music institution since the '70s, famous for its punk roots, knowledgeable staff and unbeatable vinyl selection.

Dig Vinyl

An independent record shop at the heart of Liverpool's Bold Street and West Kirby's Banks Road, stocking vinyl, CDs, cassettes, memorabilia and more.

Dead Air

A family-run neighbourhood record store specialising in second-hand vinyl, reissues and select new releases.

Root Houseplants

A must-visit for plant lovers, this stylish independent shop is packed with lush greenery, statement houseplants and expert advice.

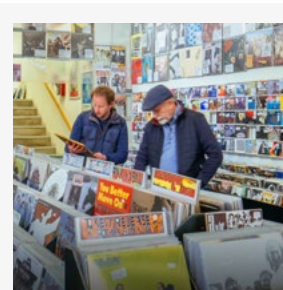


News From Nowhere

Beyond the City Centre

There's plenty of retail therapy to be found beyond the city centre too. Over in Southport, the elegant Lord Street oozes Victorian charm and is packed with independent boutiques perfect for a leisurely browse. Lark Lane is another local favourite, a bohemian stretch full of quirky shops, vintage stores and creative flair.

And if you're up for a designer spree, Cheshire Oaks Designer Outlet is just a 30-minute drive away, with big brands at bargain prices.



Probe Records



Shopping, dining and entertainment at the heart of Liverpool city centre

Don't miss...

Official Liverpool FC & Everton FC Stores

The Liverpool Sign

Money Exchange Services

Information Centre and Free City Maps

Bus Station and 3,000 Car Park Spaces

Toilets and Changing Facilities

Equipment for Hire and Accessibility Tools

Free WiFi at Several Locations

The best brands in the North West are waiting for you at Liverpool ONE.
Visit www.liverpool-one.com



Getting Around

Getting around the Liverpool City Region is simple, flexible and often part of the experience itself.

The compact city centre means many of the top attractions - from the waterfront to the main shopping districts - are within easy walking distance, making it ideal for exploring on foot.

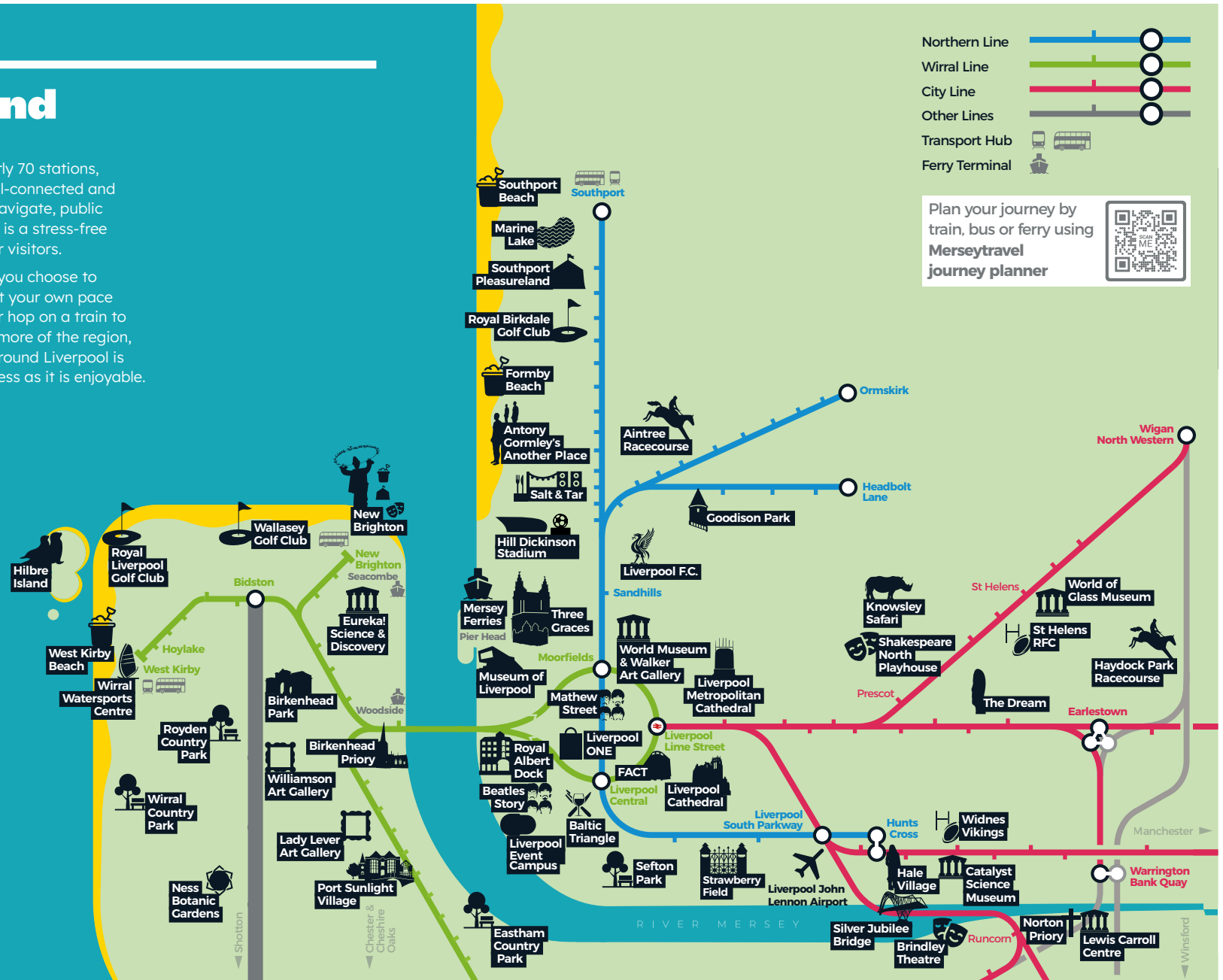
For journeys a little further afield, Merseyrail offers a fast and reliable way to travel across the region. With frequent services linking the city centre to coastal spots, parks and neighbouring areas, it's an easy option for exploring beyond the city.

With nearly 70 stations, being well-connected and easy to navigate, public transport is a stress-free choice for visitors.

Whether you choose to explore at your own pace on foot or hop on a train to discover more of the region, getting around Liverpool is as effortless as it is enjoyable.

- Northern Line
- Wirral Line
- City Line
- Other Lines
- Transport Hub
- Ferry Terminal

Plan your journey by train, bus or ferry using **Merseytravel journey planner**





THE WORLD OF GLASS

OPEN WED-SUN
10AM-4PM
FIND OUT MORE
WORLDofGLASS.COM

The World of Glass is a visitor attraction and heritage site celebrating St Helens' rich glassmaking heritage and its vital role in the region's industrial past and present.

Discover the story of glass - from ancient Egypt to its place in modern life. Groups can enjoy live glassblowing demonstrations in our hot glass studio - the only place in the North West to see this in action.

Culture.
History.
Art.

Made in Glass.



GAS | GLASS ART SOCIETY
INTERNATIONAL
FESTIVAL
OF
GLASS
NORTH WEST ENGLAND 2026

How to
get here.

Just 8 minutes from
St Helens Central train
station,
with coach parking,
café and shop.



The International Festival of Glass at The World of Glass in St Helens, 27-31 August 2026.

The festival celebrates the art, history, and science of glass with live glass demonstrations, drop-in mosaic making, and lots of family friendly activities running throughout the Bank Holiday weekend.

Exhibitions will continue until 1st November.

worldofglass.com



Sea Air, Open Skies

In Liverpool City Region, the coastline stretches out with bright horizons. Enjoy fresh sea air and moments shaped by rolling tides and endless sky.

Southport

Southport blends classic seaside character with long, breezy promenades that invite unhurried exploring. The pier, the cafés and the soft evening light create a sense of holiday ease from the moment you arrive.

Formby Coast

Formby's towering dunes and pine woods create a wild, refreshing landscape that feels wonderfully removed from everyday life. Follow the sandy paths to the beach where wide skies and natural quiet make every visit feel like a fresh discovery.

New Brighton

New Brighton is alive with character, from its lighthouse views to its creative street corners. It is the perfect place for bright, easy strolls where the sea and the town feel joyfully connected.



Crosby Beach

West Kirby

West Kirby offers views across the estuary and when the tide allows, a walk towards Hillbre Island. The group of three tidal islands is renowned for its grey seal colony, birdwatching and dramatic sunsets. Check the tide times though!

Hoylelake

Hoylelake Beach lies at the North-Western tip of the Wirral Peninsula overlooking the Dee Estuary and the distant coastline of North Wales making it a favourite place for walking and birdwatching.

Leasowe

Leasowe Bay and the historic lighthouse is the perfect place to go for a peaceful beach side walk. Did you know Leasowe Lighthouse is the UK's oldest brick-built lighthouse?

Crosby Beach

Crosby Beach is famous for Antony Gormley's Iron Men statues dotted along the expansive shoreline, see if you can find them on a walk along the beautiful Sefton coast.

Sefton Coast

Along the Sefton Coast, quieter trails weave between dunes and meadows, offering invigorating moments away from busy days. These peaceful stretches are ideal for steady exploring and enjoying the rhythm of the shoreline.



New Brighton



Nightlife

LGBTQ+

Liverpool's Pride Quarter has something for everyone, check out these venues on your next visit.

FunnyBoyz

A cabaret-style venue known for drag brunches, bingo, comedy and cocktail classes.

GBar

A lively late-night club known for its energetic dance floors and vibrant party atmosphere.

The Lisbon

A historic, welcoming pub with ornate Victorian decor, a friendly crowd and DJ and cabaret nights.

Superstar Boudoir

A lively bar and club famous for its drag performances, pop music, and glitter-filled nights.

Navy Bar

A popular club offering upbeat house music, DJs, cocktail classes and Drag Race parties.

Poste House

A cosy, traditional pub with quirky charm and a warm welcome, dating back to 1820.

Heaven

A late-night club with DJs, drag performances, themed nights and regular events.



Liverpool Pride Quarter



The Bridewell



FunnyBoyz

Pubs

Liverpool is home to some seriously iconic pubs where you can kick back with a pint and soak up the local charm.

The Bridewell

A hidden gem set in an old police bridewell from the mid 19th century with cells now used as seating areas.

The Philharmonic Dining Rooms

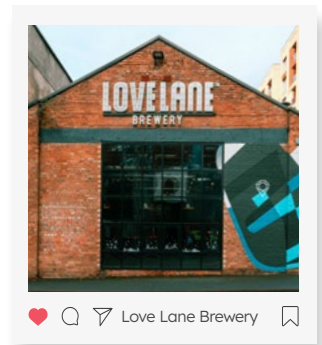
An ornate Victorian masterpiece famous for its grand décor, tiled interiors, perfectly poured pints and Grade I listed toilets.

Love Lane Brewery

Set in the Baltic Triangle, this modern brewery and bar offers craft beers brewed on-site, local gins, and a buzzing social atmosphere.

The Swan

An old Victorian Inn in the heart of the Ropewalks District famous for its jukebox.



Love Lane Brewery

Scan me to find out more





METRO MAYOR
LIVERPOOL CITY REGION

Adventure Awaits

With so much to see and do in the Liverpool City Region, it's just as well there's a great public transport network to help you get around



For information on buses, trains, Mersey Ferries, and travel tickets, visit

 merseytravel.gov.uk



Trains

The Merseyrail network has fast, frequent services operating every day, featuring fully accessible trains.

Most stations are also fully accessible but we can offer help or advice on planning your journey if you have mobility problems.



Buses

The Liverpool City Region's comprehensive bus network covers Halton, Knowsley, Liverpool, Sefton, St Helens and Wirral, giving you the opportunity to make the most of your visit to the region.



Mersey Ferries

Cross the River Mersey on a Mersey Ferry, leave the ferry on the opposite side of the river to explore and then make the journey back on the ferry or hop on a bus or train for a different view of the region.

Full River Explorer Cruises are also available.



Liverpool John Lennon Airport

Buses run regularly between Liverpool City Centre and the airport or catch a train to Liverpool South Parkway where there are regular bus links straight to the airport.



Travel Tickets

From off-peak, one-day tickets to single or return fares and everything in between, find the right ticket for you at merseytravel.gov.uk/ticketfinder



Getting here

The bags are packed, your playlist is queued and your Liverpool adventure is about to begin.

However you choose to roll into the city, by plane, train, boat or motorway, getting here is a breeze. Here's how to kick off your journey in style:

By Air

Touch down just a few miles from the action at Liverpool John Lennon Airport. Hop on a direct airport bus or grab a private transfer and be in the city centre in no time. Flying into Manchester Airport? No problem. You're around 45 minutes away, with direct trains and coach services ready to whisk you straight into Liverpool.

By Rail

Train travel to Liverpool is easy, speedy and scenic. Liverpool Lime Street Station is your central arrival point, right in the middle of all the city's major attractions, hotels and restaurants. Services run from all over the UK via operators such as Avanti West Coast, TransPennine Express, London Northwestern, Northern and more.



By Road

Driving in? Great choice. Liverpool is well-connected by the UK's motorway network.

- Cruise into the city centre via the M62
- Access the north of the city from the M57 and M58
- Heading to the Wirral? The M53 is the way to go

By Coach

Hop on a Megabus or National Express for a comfy, budget-friendly ride from cities across the UK. Liverpool also welcomes thousands of group coach tours each year.

By Water

Yes, you can even make a grand entrance by ferry! Stena Line sails daily from Belfast to Liverpool for foot passengers and vehicles P&O Ferries offer daily crossings from Dublin

Travelling from the Isle of Man? The seasonal service from Douglas with the Isle of Man Steam Packet Company will bring you to the Scouse shores.



Epic days out to Liverpool start on the train

PLUS, MORE DESTINATIONS across the North



Trains to Liverpool*

PRESTON	£6.40
WARRINGTON CENTRAL	£3.20
MANCHESTER OXFORD ROAD	£5.30
MANCHESTER AIRPORT	£7.30
WIGAN NORTH WESTERN	£3.70



Scan to book your next trip to Liverpool by train



Go do your thing

*T&Cs apply. Price shown is valid for a one way Advance purchase ticket from locations listed on the board to Liverpool Lime Street. Prices correct as of February 2026 and are subject to availability. Visit northernrailway.co.uk/advance



London to Liverpool from only **£26**



Scan the code to
book early and save.

avantiwestcoast.co.uk

Exclusions & limitations apply.

AVANTI
WEST COAST

