

LIVERPOOL
CONVENTION
BUREAU

LIVERPOOL CITY REGION
**EVENT
PLANNER'S
GUIDE**



AVANTI
WEST COAST

SPONSOR

Welcome to the Liverpool Event Planner's Guide, the only resource you need to bring your event to Liverpool City Region.

In this guide you'll find expertise on:

- **WHERE** you can host your event, from conference centres to cathedrals, stadia to stately homes
- **WHAT** to do after the event is done for the day
- **WHY** delegates love Liverpool so much that they want to return
- **WHO** the Liverpool Convention Bureau team are
- **HOW** we can help you and make your life easier

A dynamic city known for its rich history, cultural vibrancy and innovative industries, Liverpool is the ideal setting for your next event. Liverpool offers delegates an experience they will remember long after they've returned home, with vibrant venues, stunning hotels and exciting social activities.

Famously friendly, the city region and its people are waiting to welcome you and your delegates.

This is Liverpool City Region - Making Incredible Happen.

LIVERPOOL
CONVENTION
BUREAU



OUR PEOPLE



Your dedicated Convention Bureau team is here to help you bring your event to life in our incredible Liverpool City Region.

Our friendly team go above and beyond to ensure your event's success, utilising our expertise and strong local connections with event suppliers, bars, restaurants, transport, and more.

Our people and their passion make your event our event, seamlessly becoming an extension of your team.

OUR FREE SERVICES INCLUDE:

- Bid creation and support.
- Impartial advice on the right venues, suppliers and partners for your event requirements.
- Bespoke accommodation booking services.
- Delegate downtime itineraries and social programme activity ideas.
- Planning and coordination of site visits.
- Legacy, inclusivity and accessibility planning and assistance.
- Sustainability advice and guidance.

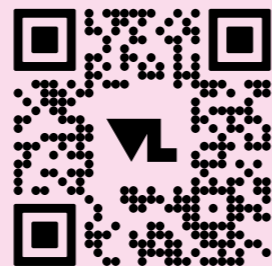
Don't just take our word for it. Accolades include being shortlisted in the Best UK Convention Bureau category at the M&IT Awards for the past 10 years!



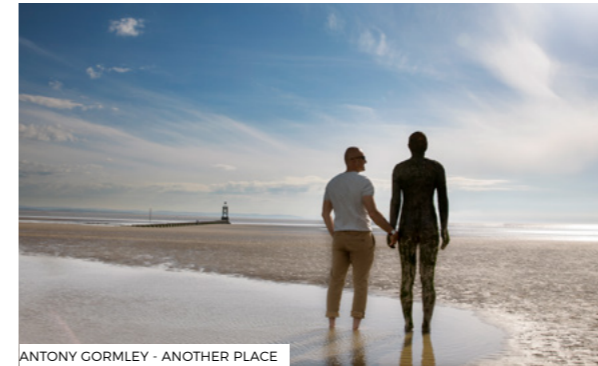
Tourist Information

For recommendations and local tips on things to do during their downtime, delegates can visit the friendly team at the Visitor Welcome Centre or even have them as part of your event.

SCAN ME TO FIND OUT MORE.



PROTECTING OUR PLANET



By working collaboratively with partners across the city region Liverpool has made incredible strides in sustainability - now ranked 3rd in England on the GDS-Index.

We are leading the way in climate action, earning global recognition as the world's first "Accelerator City" for our bold sustainability initiatives. This accolade reflects the city's trailblazing work to decarbonise key sectors including live music and TV/film production, while championing forward-thinking policies, cutting-edge technologies and environmentally responsible practices. With a clear target of reaching net zero carbon emissions by 2030, Liverpool is building a resilient, future-ready city region that sets the pace for others to follow.

We're committed to making every event greener, smarter and more responsible.

GREEN EVENTS

Here's how we can help you make a lasting impact:

SUSTAINABLE VENUES

Connect you with local venues that have achieved a Green Tourism (or similar) third party certification.

LOOK LOCAL

Help you source local suppliers, reducing the carbon footprint of your event, cutting out unnecessary travel and supporting the local economy.

CONSIDERATE CATERING

Provide access to local catering options that focus on using high-quality, locally sourced ingredients with minimal waste.

GIVE BACK

Introduce you to our "legacy champions" to help support you with a wide range of initiatives ranging from litter-picking to tree planting to local charities and initiatives that support the community - allowing you to give something back to the local community, further boosting the legacy of your event.

SUSTAINABLE TRAVEL

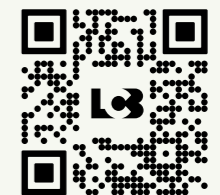
Liverpool is easily accessible by road, rail and air. It's just a two-hour train journey from London Euston to Liverpool Lime Street - where all the major venues, attractions and hotels are a short walk away.

Once in Liverpool, the extensive Merseyrail train network has four train stations serving the city centre, and excellent links to all parts of the city region.

GET YOUR STEPS IN

Liverpool is a compact and walkable city, meaning many delegates will be able to walk between hotels, conference venues and social activities.

SCAN ME TO FIND OUT MORE.



OUR PASSION

LIVERPOOL IS THE PERFECT HOST FOR ANY EVENT.



HOME TO ONE OF FIVE

NATIONAL SCIENCE AND INNOVATION CAMPUSES.



ONE THE UK'S LARGEST

ACADEMIC & CLINICAL CAMPUSES: KNOWLEDGE QUARTER LIVERPOOL.



MORE MUSEUMS & GALLERIES

THAN ANYWHERE ELSE IN THE UK OUTSIDE OF LONDON.



A UNESCO CITY OF MUSIC

AND HOME OF THE BEATLES.



THE MOST FILMED UK LOCATION

OUTSIDE OF LONDON.



UK'S TOP FOODIE CITY

TIME OUT 2025.



THE LARGEST COLLECTION

OF GRADE I LISTED BUILDINGS IN THE UK AT THE ROYAL ALBERT DOCK.



BREATHTAKING ARCHITECTURAL VENUES

INCLUDING THE ALMOST 200-YEAR-OLD ST GEORGES HALL AND THE 5TH LARGEST CATHEDRAL IN EUROPE.



TWO TOP FLIGHT FOOTBALL CLUBS

LIVERPOOL FC AND EVERTON FC.



BEST UK CONVENTION BUREAU

SHORTLISTED AT M&IT AWARDS FOR PAST 10 YEARS. 2025 BRONZE AWARD.



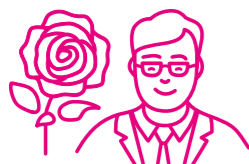
80 DIFFERENT LANGUAGES

ARE SPOKEN IN LIVERPOOL.



3RD IN ENGLAND

ON THE GDS-MOVEMENT SUSTAINABILITY INDEX.



LABOUR PARTY 2025

WELCOMING OVER 20,000 DELEGATES WITH MORE THAN 700 FRINGE EVENTS AND SET TO RETURN IN 2026.



LIVERPOOL SCHOOL OF TROPICAL MEDICINE

WORLD'S FIRST INSTITUTION DEDICATED TO RESEARCH AND TEACHING TROPICAL MEDICINE.



THE WORLD'S FIRST ACCELERATOR CITY

FOR CLIMATE CHANGE.



ONE OF THE MOST COST EFFECTIVE

DESTINATIONS IN EUROPE.



ONE OF THE TOP 10

FRIENDLIEST CITIES IN THE UK.



2024 ICCA RANKINGS 4TH IN THE UK

65TH IN EUROPE AND 112TH IN THE WORLD.

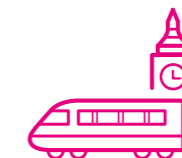
PERFECT PLACE

LIVERPOOL OFFERS A DYNAMIC EXPERIENCE FOR DELEGATES.



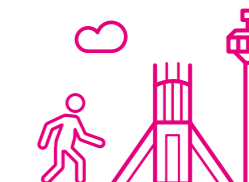
200+ GLOBAL DESTINATIONS

ACCESSIBLE BY RAIL, ROAD AND AIR.



2-HOUR JOURNEY TIME

FROM LONDON BY TRAIN.



25-MINUTE WALKING TIME

ACROSS THE WHOLE CITY.



11,000+ HOTEL ROOMS

AVAILABLE IN THE CITY CENTRE ALONE.



UK AIRPORT OF THE YEAR

AWARDED TO LIVERPOOL JOHN LENNON AT THE AVIATION INDUSTRY AWARDS UK 2025.



3RD PLACE

TRIPADVISORS'S 2026 TRAVELLERS' CHOICE AWARDS: BEST OF THE BEST DESTINATIONS.

NEW LIVERPOOL



HILL DICKINSON STADIUM

HILL DICKINSON STADIUM

Hill Dickinson Stadium, a landmark new venue on the banks of the iconic River Mersey, is now open for non-matchday bookings.

Everton Football Club's new home for men's football welcomes conferences, exhibitions, product launches, trade shows, corporate dinners, as well as outdoor concerts and events.

One of the stadium's stand-out features is The Budweiser Fan Plaza; a vast outdoor space with capacity for up to 17,000 guests.

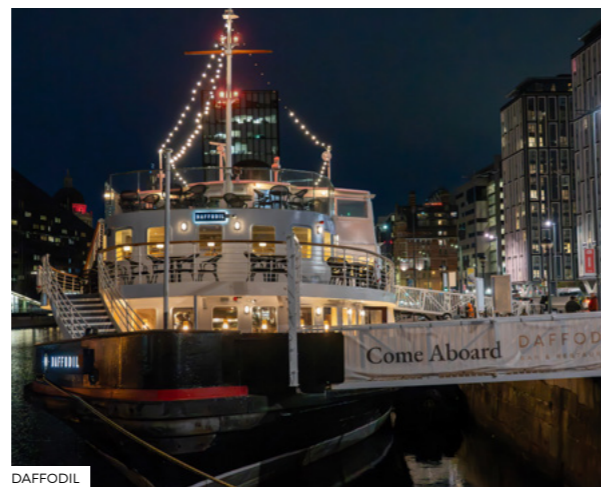


MERSEY FERRIES

MERSEY FERRIES

The first new Mersey Ferry in over 60 years is set to launch in 2026. Featuring stylish interiors and spacious, open-plan design, the fully accessible

ferry will provide a unique setting for events, allowing delegates to enjoy the city region while experiencing the unrivalled views across the River Mersey.



DAFFODIL

DAFFODIL

Step aboard Daffodil, reborn from the former MV Royal Daffodil and now permanently moored at Canning Dock. Offering an unparalleled hospitality experience on the water, she sits among the River Mersey's historic docks and stunning architecture. Home to a bar, restaurant, and submerged event space, Daffodil promises a truly unforgettable experience.



THE IVY ASIA

THE IVY ASIA

The Ivy Asia is a luxurious Asian-inspired restaurant located above the popular Ivy Liverpool Brasserie on Castle Street.

Set in the former Bank of England building, steeped in history and character, The Ivy Asia Liverpool is an incredibly exciting addition to the city's varied culinary scene, combining opulent interiors with decadent dishes, showstopping cocktails and its signature ambiance.

TATE LIVERPOOL

Tate Liverpool, the UK's most visited modern and contemporary art gallery outside London, will reopen in early 2027 following an ambitious redevelopment of its historic home on the Royal Albert Dock. The project will reimagine the gallery for the 21st century, creating dynamic new spaces to showcase an exceptional breadth of artworks.

The reopening programme will pay tribute to the cultural vibrancy of the North, with artist Chila Kumari Singh Burman among those featured in the inaugural displays.

BARNACLE RESTAURANT AND BAR

From Paul and Harry Askew, Barnacle is located in the historic School for the Blind on Hardman Street. After beginnings at Duke Street Market and a street food pop-up on the Royal Albert Dock, Barnacle has now found its permanent home. With a restaurant, terrace, and bar, Barnacle celebrates Liverpool's maritime heritage and uses international influences to create seasonal menus with world class local produce.

DISHOOM

Landing on Dale Street is Dishoom Permit Room, an all-day bar-café serving up delicious breakfasts, seriously good bar snacks, moreish curries, and plates for sharing (all with a selection of signature Dishoom delights). A tribute to the way Bombay kicks back and cuts loose - a salute to the city's permit rooms, beer bars and drinking holes.



TATE LIVERPOOL



BARNACLE

WELLBEING



BEACH YOGA

The Liverpool City Region is the perfect backdrop for enhancing delegate experiences and tapping into nature. Take a look at just a few ideas your delegates could enjoy...

Wyld Sauna - Accommodating up to 30 people Wyld Sauna offers a one-of-a-kind escape in the heart of Liverpool. Sweat it out in their floating sauna, then cool off with a refreshing plunge into Princes Dock.

Sound Bath - Connect mind and body with a relaxing sound bath experience at Liverpool's healthiest venue The Spine.

Floating Tennis Courts - The UK's first floating padel tennis courts are set to open at Princes Dock. The development will feature three courts built on state-of-the-art floating platforms and the world's first floating clubhouse.



FLOATING TENNIS COURTS



FLOATING SOUND BATH

Beach Yoga - Start or end the day with a breath of fresh air at one of the many beach yoga locations across the city region.

Dock Run - Make the most of the city's waterfront by organising a morning or evening run for delegates. Reap the health benefits whilst enjoying the world-famous waterfront.

Floating Sound Bath - Float away at The Municipal Hotel & Spa Liverpool M Gallery Collection to the sounds of gongs, singing bowls, and chimes promoting deep relaxation, stress relief, and enhanced mindfulness.

CONNECTING EXPERTISE.

Club Liverpool is Liverpool City Region's conference ambassador programme, working with leading academics, medics and professionals who want to bring events here.

Ambassadors can be important to event planners by:

- acting as event figureheads
- offering local knowledge
- providing valuable PR assets
- aiding networking
- highlighting potential event partners
- helping with the bidding process
- inputting into conference content

Let us know your ideas and we will help you find an ambassador to suit your project. Contact us on info@clubliverpool.co.uk

**Dr Claudia
Mettke-Hofmann**

LEAD FOR ANIMAL BEHAVIOUR,
SCHOOL OF BIOLOGICAL AND
ENVIRONMENTAL SCIENCES,
LIVERPOOL JOHN MOORES UNIVERSITY.

A CLUB LIVERPOOL
AMBASSADOR

CLUBLIVERPOOL.CO.UK

LIVERPOOL CITY REGION

HALTON

Halton combines the vibrancy of arts and heritage, the beauty of the great outdoors, the thrill of sports and is the birthplace of the British chemical industry.

Halton's Runcorn train station is on the West Coast Mainline - just two hours direct from London. It is a short drive from Liverpool John Lennon Airport and at the heart of the North West motorway network, with a plethora of canal paths including the TransPennine Trail.

Venue highlights in Halton include:

The Brindley - Adding some stage presence to events, this multi-purpose, state-of-the-art theatre performs every time with two large versatile spaces accommodating up to 400+ delegates. This is currently being extended to include a bistro style restaurant, library and outdoor performance space - due to complete Spring 2026.

Norton Priory Museum and Gardens - As an international site of archaeological significance, Norton Priory's atmospheric medieval ruins, beautiful Georgian walled garden and modern

facilities add impact to any occasion. With five indoor spaces and plenty of outdoor areas, Norton can host 200+ delegates.

DCBL Stadium - This world-class arena is more than just a match with delegates. Home to the Widnes Vikings (rugby league) and Widnes FC, the stadium boasts 24 meeting rooms and has a venue capacity of 12,500, having previously hosted Bryan Adams and Elton John.



DCBL STADIUM



THE BRINDLEY



KNOWSLEY HALL

KNOWSLEY

Just a short drive or train ride from Liverpool city centre, Knowsley is well connected, abundantly green and boasts a fascinating cultural heritage that includes links to some of the country's most famous playwrights and poets.

Venue highlights in Knowsley include:

Knowsley Hall - The ancestral home of the Earls of Derby, Knowsley Hall is a Grade II stately home described as a hidden gem of the North West. Knowsley Hall provides a venue of incomparable

character and refinement with over 600 years of untouched heritage.

Shakespeare North Playhouse - Having picked up more than 30 awards since opening its doors in 2022, this landmark arts venue boasts a traditional timber framed Shakespearean theatre, exhibition space, studio and Sir Ken Dodd Performance Garden. The Playhouse offers unique and flexible spaces for meetings, networking, entertaining and celebrations.



SHAKESPEARE NORTH PLAYHOUSE

LIVERPOOL CITY REGION



FORMBY HALL

SEFTON

Boasting a beautiful 22-mile coastline, Sefton has the perfect blend of natural beauty coastal destinations alongside urban chic.

Venue highlights in Sefton include:

The Waterfront Hotel - A 4-star luxury boutique hotel within England's Golf Coast. 131 beautifully appointed bedrooms, two luxurious penthouses, five meeting rooms, four conference spaces, a restaurant, bar, lounge and roof garden.



THE WATERFRONT HOTEL

Formby Hall - Nestled within 200 acres of lush greenery, Formby Hall Golf Resort and Spa offers everything you need. From boardroom to banquet the venue can cater from 60 to 300.

The Grand - A beautifully restored Art Deco building. Stylish and sophisticated The Princess Grace Suite can accommodate up to 250 people. Its sister venue, The Bold, located opposite can host a further 120.

ST HELENS

On the doorstep of two great cities, Liverpool and Manchester, with excellent connectivity, St Helens boasts a bustling arts and culture scene and is surrounded by beautiful countryside, making it a haven for outdoor and sporting enthusiasts.

Venue highlights in St Helens include:

BrewDog Stadium - Home to the world-famous St. Helens R.F.C. It's the newest purpose-built rugby league stadium in the country, and a major conference and events venue, catering up to 400 delegates. It plays host to large live music events and is the new home of Liverpool Football Club Women.



THE GRAND



BREWDOG STADIUM

Haydock Racecourse - Flexible spaces, convenient location, dedicated event support and stunning views. It's the perfect place to host a conference or meeting, no matter how big or small, with a range of suites accommodating up to 500 guests - all set in 127 acres of beautiful parkland.

The World of Glass - Where industrial heritage meets art. The World of Glass offers a range of event spaces to hire, from conference rooms, to a canal side garden. They can also provide catering options, live glass blowing demonstrations, team glass making experiences, and late night opening available on request.

WIRRAL

Taking a short trip across the River Mersey you will find the Wirral Peninsula with over 50 miles of stunning coastline and outdoor spaces to explore.

Venue highlights in Wirral include:

Hillbark Hotel & Spa - The city region's first five-star hotel, offers the finest luxury with its spectacular architecture, beautiful grounds and meeting spaces for up to 500 delegates.

Floral Pavilion - Glass-fronted building in the seaside town of New Brighton. The Floral Pavilion features an 814-seat theatre, conference and meeting rooms also with large capacities available, the Panoramic Lounge and spacious plaza.

Thornton Hall Hotel - Nestled in the Wirral countryside, this hotel includes function suites and meetings rooms for up to 600 delegates, alongside fine dining, and luxury spa facilities.

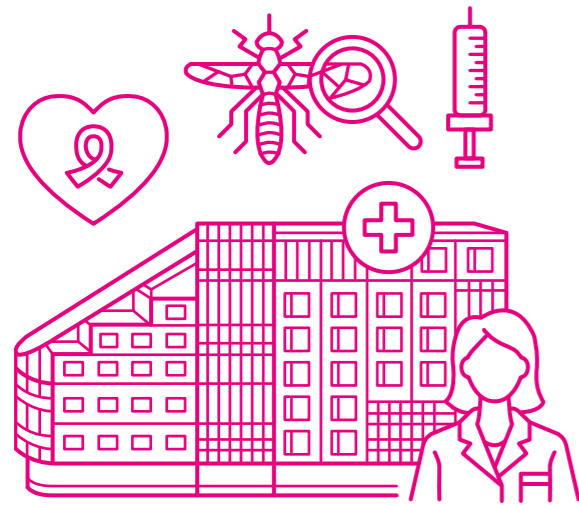


HILLBARK HOTEL & SPA



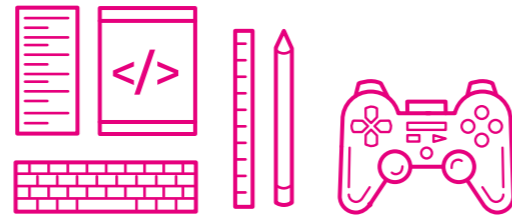
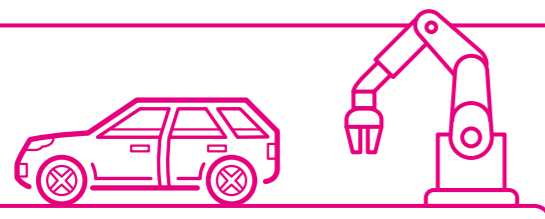
HAYDOCK RACECOURSE

SECTOR STRENGTHS



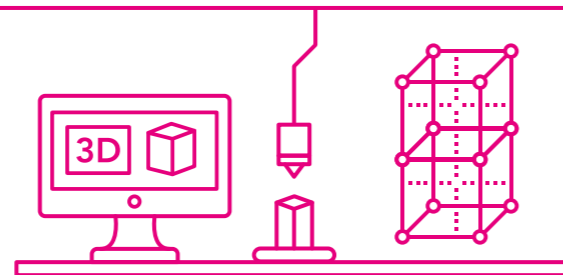
HEALTH & LIFE SCIENCES

- Recognised as a leading hub for vaccine discovery, development, and manufacturing.
- Highest number of specialist hospitals outside of London.
- Home to the northern HQ for the Royal College of Physicians.
- Centres of Excellence include the Walton Centre for brain tumours, Liverpool Women's Hospital for neonatal care and Alder Hey Children's Hospital for cancer treatment.
- A global innovator in diverse research fields such as Precision Medicine, Infection Control, Children's Health, Veterinary Science, Big Data and AI.
- LSTM is the first institution in the world dedicated to research and teaching in the field of tropical medicine.



DIGITAL CREATIVE & TECHNOLOGY

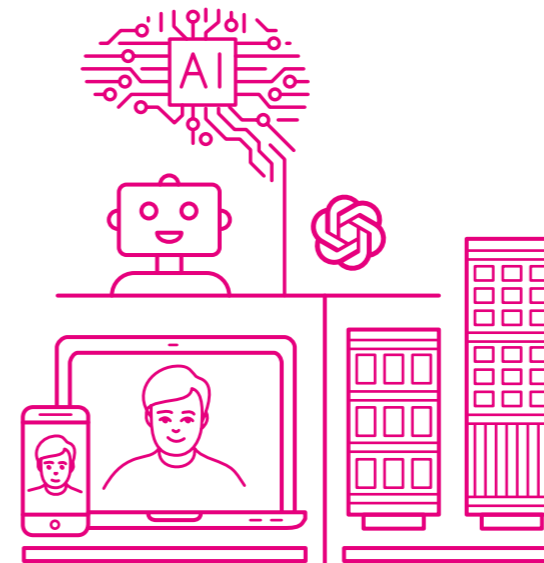
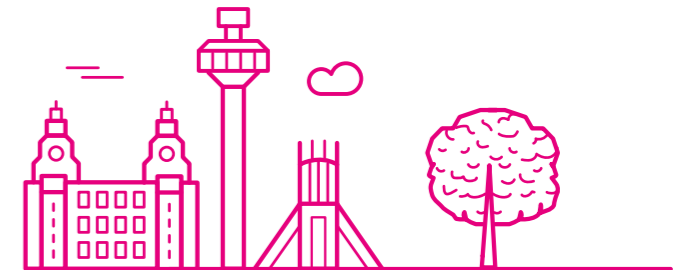
- Hartree National Centre for Digital Innovation is driving AI and Big Data expertise.
- One of the UK's fastest growing tech sectors and 9th in the world for hosting a thriving start-up ecosystem.
- The Baltic Triangle is the epicentre of Liverpool's digital, creative and tech sectors, with some of the city's most innovative digital enterprises located there.



ADVANCED MANUFACTURING

- The Manufacturing Technology Centre (MTC) is one of only seven high-value technology centres in the UK.
- Responsible for 15% of the UK's annual car production.
- Home to one of Europe's largest bio-manufacturing clusters and the largest supercomputing facility for industrial applications in the UK.

◆ Liverpool City Region is a leading destination for various sectors. Take a look at our sector strengths and what sets us apart from the rest.



PROFESSIONAL & BUSINESS SERVICES

- One of the highest concentrations of financial business services and wealth management companies outside of London.
- 50% of the region's High Growth companies are in the professional sector.
- Sector growth of 57% in the past 5 years.

GREEN ENERGY & ENVIRONMENT

- One of the world's largest concentrations of offshore wind farms is based in Liverpool City Region.
- Significant expertise in marine energy, hydrogen, and waste transformation.
- The Mersey Tidal Commission is looking in to ways to harness the power of the River Mersey as a source of clean, renewable, predictable energy.



SCAN ME
TO FIND
OUT MORE.



EXPERIENCES

Make sure your delegates make the most of their downtime by putting together a social programme that takes in the sights and sounds of Liverpool.

Liverpool attracts over 60 million visitors each year and for good reason, the city is bursting with unique activities and cultural attractions.

Liverpool Convention Bureau can help you to plan the perfect downtime itinerary for your delegates, ensuring they get the most out of their time in the city.



WATERFRONT

1. WANDER THE WATERFRONT

Take a walk along Liverpool's iconic waterfront. Start at the Pier Head and see the Royal Liver Building, Cunard Building and Port of Liverpool Building, otherwise known as the Three Graces.

Be sure to stop to snap a photo with The Beatles statue before moving on along the waterfront to the Royal Albert Dock, once a working dockland and now a hub of shops, restaurants and museums.



LIVERPOOL ONE

2. HIT THE SHOPS

Head into Liverpool ONE, a unique open air shopping complex where you'll find big name stores such as UNIQLO, Anthropologie and Sephora alongside unique concept stores and pop-ups for local brands. You can also walk on to Bold Street where you'll find independent stores such as News From Nowhere and Pop Boutique or head to the Baltic Triangle to hunt for treasures at Red Brick Vintage. Further afield take a stroll down Lord Street - the picturesque mile long Victorian shopping boulevard in Southport.

Some of our favourite experiences totally unique to Liverpool include:

- Hop aboard the iconic **Mersey Ferry** to see the breathtaking Liverpool skyline from the **River Mersey**.
- An array of guided tour options including the **Magical Mystery Tour**, a bus tour of all the major Beatles sights, and RLB360, a tour of the iconic **Royal Liver Building** tower.
- Enjoy your very own competitive cake baking experience at **The Big Liverpool Bake**.
- Explore not one but two Cathedrals. **Liverpool Cathedral** and **Liverpool Metropolitan Cathedral** can be found at either end of Hope Street.
- Embark on a film location tour of Liverpool with **Reel Tours**.



ROYAL ALBERT DOCK

3. REFUEL

Take time to enjoy a tasty meal or a refreshing drink in one of Liverpool's many restaurants, cafes, coffee shops and bars. From the culinary delights of Castle Street and quirky Bold Street to the abundance of waterside venues at the Royal Albert Dock and street food markets like Duke Street Market offering a selection of independent vendors, there's lots of options for delegates to dine in Liverpool.

4. EXPLORE THE REGION'S ATTRACTIONS

Liverpool City Region has a wealth of experiences to enjoy. From exploring the ruins at Norton Priory Museums and Gardens to immersing yourself in science at World of Glass you are sure to have an unforgettable stay.

Theatre lovers can enjoy the delights of the Liverpool Empire, The Atkinson and Shakespeare North and with more museums and galleries than anywhere else in the UK outside of London, no matter what you're interested in you'll find it here. The Beatles Story at Royal Albert Dock tells the story of The Beatles and includes replicas of the Cavern Club and Abbey Road and the Lady Lever Art Gallery is regarded as one of the finest art galleries in Europe, housing a large collection of Pre-Raphaelite paintings.

The Museum of Liverpool at the Pier Head depicts the city's legacy and links to music, sport and industry while the British Music Experience is a walk through music history and can be found inside the Cunard Building.

Football fans won't want to miss the opportunity to explore Liverpool FC and Everton FC stadium tours on a visit to the city too. Stand pitch side, see the dressing room and learn all about the history of the iconic clubs.

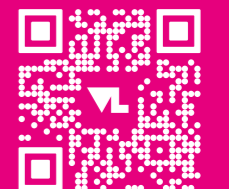


MUSEUM OF LIVERPOOL



DUKE STREET MARKET

SCAN ME TO
DOWNLOAD
LIVERPOOL CITY REGION'S
VISITOR GUIDE



GETTING HERE

Travelling to Liverpool is accessible and straightforward, with direct train services to Liverpool Lime Street Station from London Euston and a diverse mix of routes coming directly into Liverpool John Lennon Airport. Liverpool provides an industry leading experience for passengers from around the world.

LIVERPOOL
CONVENTION
BUREAU

GETTING HERE



AIR

Two international airports within 45 minute drive – welcoming flights from all over the world either directly or via connecting flights from Europe.



TRAIN

Getting to Liverpool by train is quick and easy, with regular rail services from all over the UK taking you straight to Liverpool Lime Street in the heart of the city. The journey from London to Liverpool takes just over 2 hours with Avanti West Coast operating hourly direct services, and you can get here from Manchester in just 35 minutes.



Once in Liverpool, the extensive Merseyrail train network has four train stations serving the city centre, and excellent links to all parts of the city region. Visit merseyrail.org



ROAD

Liverpool City Region is well-connected to the UK motorway network. From the M6 take the M62, M58 or M56 direct to the destination. For those transporting delegates by coach, there are parking bays and pick up/ drop off across the city centre. Liverpool and Southport are both recognised as official 'coach friendly' destinations by the Confederation of Passenger Transport.



SEA

Arrive in Liverpool by sea on the River Mersey and you get the best views of the world-famous waterfront. There are ferry routes between Liverpool and Belfast, Dublin and the Isle of Man. Liverpool Cruise Port is located on the world-famous waterfront.



WALK

With such a compact and accessible city centre, it's easy to go green and walk top to bottom! For more travel information go to visitliverpool.com



Experience the buzzing city of Liverpool on two wheels – hire an electric scooter or e-bike from Voi and move around freely while enjoying the fresh air.



Choose Avanti for a faster journey

Our trains will take you from London Euston to Liverpool Lime Street in as little as 2 hours 21 minutes. We are also increasing our service frequency for 2026, with more trains than ever before into Liverpool Lime Street, brand new trains and additional stops including Lichfield Trent Valley, Tamworth, and Liverpool South Parkway, making travelling into the city more flexible than ever before.

Advance ticket prices on the Liverpool route start from £26 with tickets released up to 12 weeks in advance. Booking early can save up to 42% on the ticket price.

Contact us for large group bookings

We cater for large group bookings, including private carriage hire, with discounted rates for larger groups and a dedicated host available. Complete our group booking form by visiting [Group Train Tickets | Avanti West Coast](#) or if you'd prefer - give us a call on **03455 280253** (Option 4 then Option 1).

Our dedicated hosts can take all the stress out of boarding by meeting your group and escorting you to your carriage, as well as ensuring private carriages remain exclusive.

Make the most of your event with us

Avanti West Coast offer three classes of travel – Standard, Standard Premium and First Class – meaning if you are planning a group journey in support of your event you have full flexibility to suit your delegates' needs. You can find out more about our classes of travel at avantiwestcoast.co.uk/travel-information/onboard

Sign up for ticket alerts at www.avantiwestcoast.co.uk/tickets-and-savings/ways-to-save/ticket-alerts for notification of when tickets go on sale.

Be alerted to engineering works at www.avantiwestcoast.co.uk/travel-information/plan-your-journey/planned-engineering-works. Engineering work is more common at weekends, especially Sundays and bank holidays.

Get more info about accessibility and luggage assistance at www.avantiwestcoast.co.uk/about-us/accessibility-hub, including details of our innovative travel companion app for customers with accessibility needs.



London to Liverpool from only £26



Scan the code to book early and save.

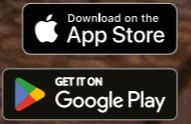
avantiwestcoast.co.uk

Exclusions & limitations apply.

AVANTI
WEST COAST



CHEAP TRAINS TO LIVERPOOL



Scan now



For latest offers, deals and the best prices - download our app

**PAY LESS,
DO MORE**



PROFESSIONAL CONFERENCE ORGANISERS

When you're planning a conference, sometimes you need some additional help. That's where a Professional Conference Organiser (PCO) comes in.

A conference expert who can handle every detail from registering guests and creating delegate lanyards to scoping out venues and planning your event programme, a PCO works closely with executives, academics and suppliers to help you deliver a flawless experience.

Hosting regular check-ins to ensure every task is covered and executed to perfection, a PCO and their expert team take the stress out of conference planning.

Liverpool Convention Bureau partners with trusted PCO's who can assist with your conference needs.

To get started contact Andy Harrison, International Bidding Manager at aharrison@liverpoolcityregiondp.com for advice on appointing a PCO.

PCO contact information:

Abbey Conferences
Lindsay McClenaghan, Senior Manager,
Conference Business Development.
lindsaym@abbeyuk.com
abbeyconferences.com

Cascade Productions
Liam Jones, Client Services Manager
liam@cascadeproductions.co.uk
cascadeproductions.co.uk

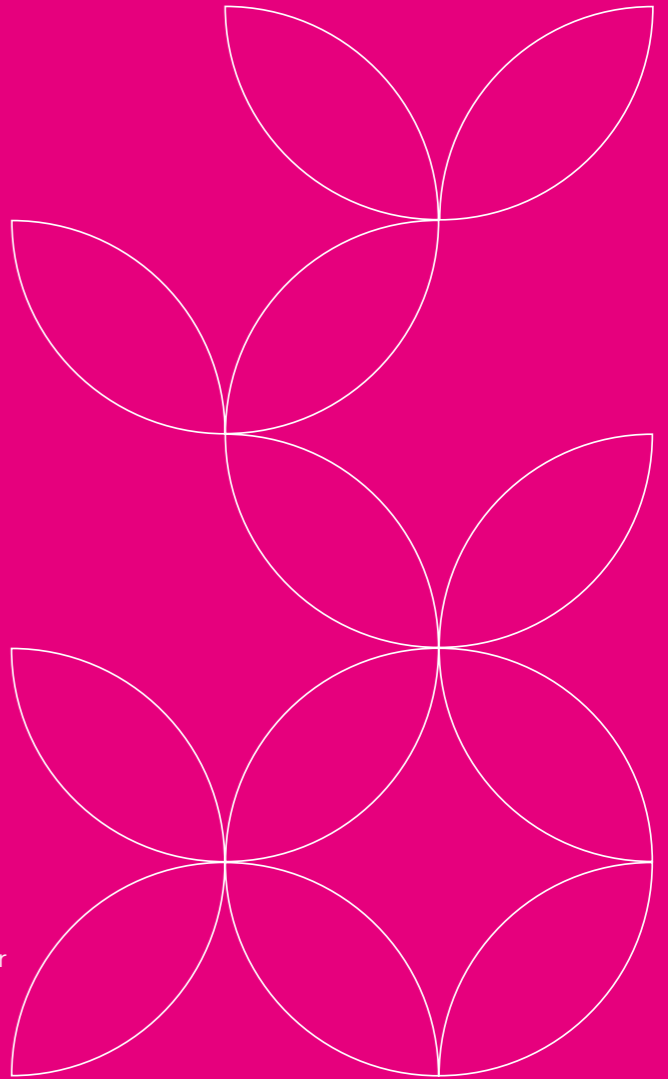
Conference Partners
Berni McCartney, Bid and Proposal Manager
berni.mccartney@conferencepartners.com
conferencepartners.com

Fitwise
Shelley Spencer, Business Development Manager
Shelley.Spencer@fitwise.co.uk
fitwise.co.uk

Seren Events
Sarah McGovern, Sales Director
sarah.mcgovern@serenevents.com
serenevents.com

TFI Lodestar
Caroline Windsor, Associations Account Director
caroline.windsor@tfilodestar.com
tfilodestar.com

Worldspan
Phillipa Thompson, Business Development Manager
phillipa.thompson@worldspan.co.uk
worldspanplc.com



LIVERPOOL EXPERIENCE CAMPUS

We are Liverpool's connected campus for experiences and events.

Formerly ACC Liverpool, our waterfront campus brings together a conference centre, exhibition centre, auditorium and iconic arena.

Explore the places that make up LEX...

LIVERPOOL
CONVENTION
BUREAU



Liverpool Experience Campus supported our event exceptionally well and offers strong potential for future growth. The standout factor for us is definitely their team.

AIRMIC



LIVERPOOL EXPERIENCE CAMPUS

accliverpool.com/lex

There is power in together

Liverpool Experience Campus features a set of interconnected, purpose-built venues and on-site hotels. From our award-winning convention centre with its striking central auditorium, to an 11,000-capacity arena and a flexible, multi-hall exhibition centre, everything is designed to scale with your ambition. One campus, endless possibilities, all right on Liverpool's iconic waterfront.

With four hotels and 848 bedrooms on our immediate campus, including the 4-star Pullman Liverpool which has direct access to the exhibition centre, securing accommodation for your delegates is a breeze.

Our track record speaks for itself - successfully hosting national and international events 365 days a year. From multi-venue conventions to party political conferences, product launches to showcase exhibitions - there's nothing we can't do.

We are 100% owned by the city of Liverpool, founded as a destination for people to experience life's most impactful experiences in the arts, culture, innovation and ideas - together. We are a partner to our clients, a place of moments, magic and memories for our guests, and a gateway to the extraordinary city we call home.

You have the magic, we have the means

Planning an event here feels effortless because you're never doing it alone. From expert event management that takes care of every detail, to a full production team delivering standout AV, staging, and streaming, and exceptional catering from our trusted partner. We're not just a venue, we're your delivery partner, working with you to bring every element of your event to life.



A stage to shape change

We are serious about sustainability - and it shows. Now a carbon-neutral event campus on the path to net zero by 2030, we've earned industry-leading accolades including Green Meetings Gold, Greener Arena certification and ECOsmart Platinum. Each event receives a carbon footprint report and our expert team is right there with you helping you make smarter, greener choices without compromising on quality.

Our impact goes beyond the event itself. Our event legacy programme is equally strong, partnering with clients such as Alzheimer's Research UK and Diabetes UK to deliver meaningful impact for the community we serve.



The Convention Centre

The Convention Centre at Liverpool Experience Campus is a space that works just as hard as you do, whatever the size of your event.

At its heart sits a 1,350-seat tiered auditorium with innovative rotating drums, alongside a 3,250m² exhibition hall and 16 adaptable breakout rooms that can be split, combined, and configured to suit your agenda.

A light-filled central galleria brings everything together, seamlessly linking the Convention Centre to the M&S Bank Arena. Here, you'll find an additional 3,400m² of exhibition space, tiered seating for up to 4,000 delegates, and a versatile tracking drape system, giving you even more room to think big and deliver with impact.

Exhibition Centre

The Exhibition Centre at Liverpool Experience Campus is where big ideas get the space they deserve. A contemporary 8,100m² venue, it features three state-of-the-art halls that work beautifully on their own or come together to create something even bigger.

Each hall is fully supported with dedicated catering outlets, toilets, and level access, alongside a spacious external loading bay that keeps things moving smoothly for contractors and exhibitors. Upstairs, eight meeting rooms and two glass-fronted terraces offer flexible breakout spaces, all with stunning views across the river.

Conveniently linked to the rest of the campus by a striking glass bridge, the Exhibition Centre pairs seamlessly with the Convention Centre, giving you the freedom to scale up, spread out and make the most of every moment.



CONTACT:

Address: Liverpool Experience Campus,
Kings Dock, Liverpool Waterfront,
Liverpool L3 4FP

CAMPUS CAPACITIES

Hall	Size (m²)	Theatre	Banquet	Cabaret	Class room	Board room
Multi-Purpose Hall (divisible)						
2	3,725	2,992	1,800	1,260	1,580	-
Sections of Multi-Purpose Hall						
2A	1,744	1,700	800	560	780	-
2B	1,744	1,700	800	560	780	-
2C	331	400	160	112	170	-
2D	332	400	160	112	170	-
2E	430	400	200	140	195	-
2F	429	400	200	140	195	-
2G	848	850	400	280	390	-
2H	848	850	400	280	390	-
2J	893	850	400	280	390	-
2K	893	850	400	280	390	-
2L	395	400	200	140	195	-
2M	1,576	1,700	800	560	780	-
2N	394	400	200	140	195	-
2P	893	850	400	280	390	-
2Q	893	850	400	280	390	-
Arena Floor	3,400m²					
Plenary	2,000 - 11,000 seats					
Main Auditorium						
1(A+B+C)	N/A	1,350	-	-	-	-
Core Auditorium 850 Tiered Seats						
1A	N/A	850	-	-	-	-
Revolving Auditorium 250 tiered seats						
1B	N/A	250	-	-	-	-
1C	N/A	250	-	-	-	-
Convention Centre Meeting Rooms						
3 (A+B)	463	613	270	222	311	102
3A	243	299	120	102	147	60
3B	220	264	100	102	125	60
4 (A+B)	173	190	80	60	90	48
4A	87	90	-	24	45	36
4B	86	90	-	24	45	30
5	25	25	-	-	15	12
6	26	25	-	-	15	12
7	34	32	-	-	14	18
8	25	25	-	-	15	12
9	26	25	-	-	15	12
10	34	32	-	-	14	18
11 (A+B+C)	332	418	170	150	209	78
11A	92	95	-	24	48	36
11B	154	148	70	60	72	48
11C	86	95	-	24	45	36
12	172	190	80	60	90	48
13	58	63	-	-	31	24
14	44	50	-	-	22	18
15	25	16	-	-	14	12
16	14	15	-	-	-	6

- * All conference centre meeting rooms provide 4 metres of clear height.
- * The dimensions shown are of the room at its widest point. Please be aware some rooms may vary as they have curved corners.
- * Cabaret based on 6 per table.
- * Banquet maximum capacity above is without dancefloor or serving kitchen

Hall	Size (m²)	Theatre	Banquet	Cabaret	Class room	Board room
Exhib Centre (A+B+C)	8,100	6,000	3,270	-	-	-
Exhib Centre (B+C)	5,400	4,800	1,900	-	-	-
Exhib Centre Hall A	2,700	2,400	-	-	-	-
Exhib Centre Hall B	2,700	2,400	1,100	-	-	-
Exhib Centre Hall C	2,700	2,400	1,100	-	-	-

* All banquet capacities allow space for a finishing kitchen, which is a requirement for all seated dinners. Capacities based on round tables of 11.

Hall	Size (m²)	Theatre	Banquet	Cabaret	Class room	Board room
Exhibition Centre Meeting Rooms						
17	65	42	-	-	21	24
18	34	30	-	-	12	18
19	35	30	-	-	12	18
20	32	25	-	-	11	18
21	29	22	-	-	10	18
22	82	73	-	-	37	48
23	82	73	-	-	37	48
24	34	28	-	-	12	18
18+19	70	80	-	-	39	42
19+20	66	61	-	-	37	42
20+21	66	59	-	-	30	42
22+23	168	-	90	-	-	-
23+24	90	-	-	-	-	-
18+19+20	99	110	60	-	53	-
19+20+21	99	107	60	-	43	-
18+19+20+21	132	-	80	-	70	-

* For banquet style layout please note that these capacities do not include a stage or dance floor.



PULLMAN LIVERPOOL

pullmanliverpool.co.uk

Pullman Liverpool combines luxury accommodation with premier event spaces on the city's iconic waterfront, offering seamless access to Liverpool Experience Campus - ideal for business travellers event organisers, and leisure guests seeking comfort and convenience.

Guestrooms

Pullman Liverpool offers 216 stylish rooms, each with en-suite bathrooms, rainfall showers, 55-inch TVs, and C.O. Bigelow toiletries, ensuring a comfortable and luxurious stay for every guest. Upgraded options such as Deluxe, Premium & Suites provide additional amenities such as N'Espresso machines, mini bars, and impressive views of Liverpool's skyline, perfect for VIPs or longer stays.

Event Spaces

The adaptable Mersey Suite accommodates up to 150 guests for drinks receptions and can be configured into theatre or cabaret style, ideal for conferences or banquets for up to 70 delegates.

Meeting Rooms

For smaller events, the King Suite, Albert Suite & Co-working Lounge offer high-speed Wi-Fi, creating the perfect environment for meetings or breakout sessions.

Dining & Social Areas

Pullman's Bar, Lounge, and Restaurant serve locally inspired dishes, providing event attendees with convenient and delicious dining options on-site, and perfect spot to relax and unwind. A small semi private dining area is available for up to 16 guests.

CONTACT:

Telephone: +44 (0)151 945 1038
 Email: H9227-SL@accor.com
 LinkedIn: [pullman-hotel-liverpool](https://www.linkedin.com/company/pullman-hotel-liverpool)
 Facebook: [PullmanLpool](https://www.facebook.com/PullmanLpool)
 Instagram: [pullman_liverpool](https://www.instagram.com/pullman_liverpool)
 Address: Kings Dock, Liverpool L3 4FP



VENUE INFORMATION

Venue Name	Dimensions LxWxH (m)	Banqueting	Cabaret	Class room	Theatre	Board room
King Suite	7 x 7 x 3.2	30	24	18	40	16
Albert Suite	8.5 x 8.7 x 3.2	50	40	24	60	20
Mersey Suite	15 x 8.8 x 3.2	70	64	42	100	40
Co-working Lounge	10 x 6 x 3	-	24	16	40	16



VENUES

Looking for a venue? A state-of-the-art conference centre, grand university buildings, Premier League football stadia, Beatles venues, cathedrals, museums, theatres or a stately home; this region has it all.

LIVERPOOL
CONVENTION
BUREAU

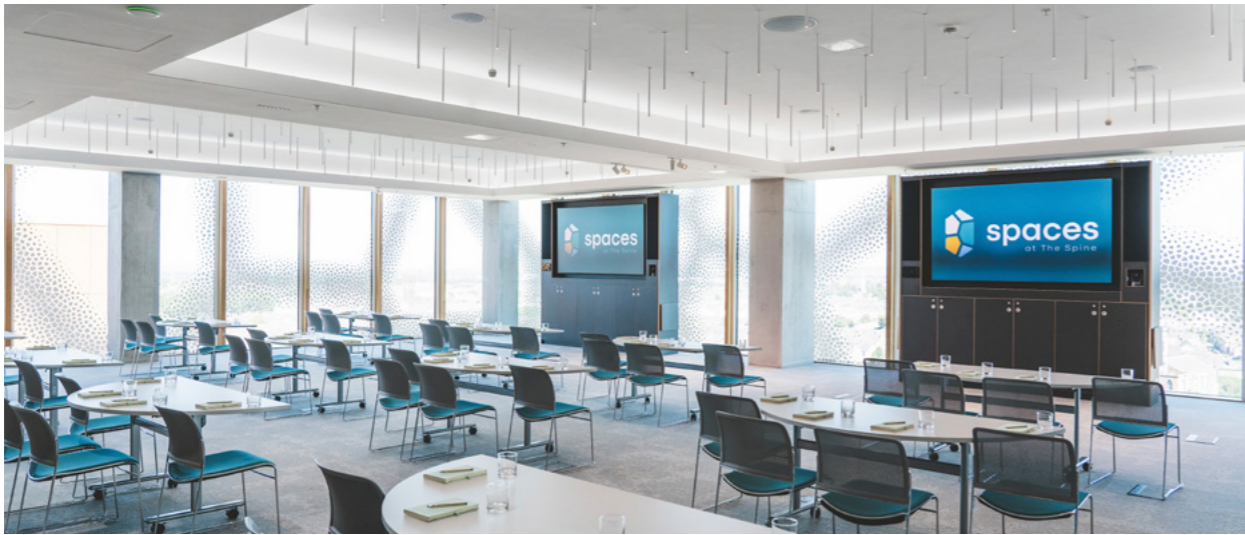


Exceptional. I think that's the overriding feeling I took away from the conference about the service that we received at Spaces at The Spine.

You deal with different events every week but for us this is the major event of our year, and to have been treated with such care and consideration by all the staff that looked after us really made all the difference - we did not feel like we were on a conveyor belt of events that your venue was having to deal with.

I've been planning conferences for over 13 years and have dealt with many venues, and Spaces at the Spine really was an exceptional place with exceptional service.

Research Libraries UK



SPACES AT THE SPINE

www.spacesatthespine.co.uk

Spaces at The Spine is Liverpool's ultimate destination for world-class events. It is housed within the Royal College of Physicians' (RCP) northern home, The Spine, one of the healthiest buildings in the UK.

With wellbeing and sustainability weaved in its design, Spaces at The Spine is more than an event venue; it is a place for everyone to collaborate and connect, bringing people together in an inclusive space which celebrates local innovation, excellence and culture whilst actively optimising the wellbeing of people and the planet.

The venue holds BREEAM Outstanding and is WELL Certified at the Platinum level through the International WELL Building Institute (IWBI). It also holds a range of industry award wins recognising its leading role as a forward-thinking venue, including silver for Venue of the Year (Over 300) at the miaList Awards 2025 and Gold for Business Events Venue of the Year at the Liverpool City Region Tourism Awards 2023.

Unique event spaces

Spaces at The Spine's portfolio includes 14 ergonomic, light-filled event spaces showcasing best-in-class event technology and building connectivity. Its modular design allows for great flexibility, with spaces that can be combined into larger rooms for up to 330 people or split into smaller breakout rooms. Thanks to its neutral palette and decor, and the presence of screens throughout, the venue can be branded to suit clients' requirements whilst preserving natural and muted elements that create a calm environment accessible to all.

Distinctive and unique event spaces include:

- Space One & Two, the venue's main conference space, presenting a flexible and modular design suitable for events up to 330.
- Destination dining space The Axis, located on The Spine's top floor and boasting unrivalled panoramic views over Liverpool City Centre and the Mersey - the perfect location to host memorable evening events including private fine dining and drinks receptions.
- Informal event spaces such as The Base café and The Steps, the ideal settings for community evenings and get-togethers.



CONTACT:

Telephone: +44 (0)151 318 2200

Email: spaces@rcp.ac.uk

LinkedIn: RCP Spaces at The Spine

Instagram: rcpspaces

Address: Spaces at The Spine, The Spine Building, 2 Paddington Village, Liverpool L7 3FA



- Floor eleven, home to a world-class assessment centre and recreating a real-life medical ward scenario for exams, medical simulations and filming.

Sustainability

Sustainability is at the very core of Spaces at The Spine. From its design and construction materials to day-to-day business operations and waste management, the venue takes a 360-degree approach to being environmentally responsible. Event spaces are built to the standards of BREEAM Outstanding, a rating taking into account energy efficiency, sustainable material procurement and practices.

Working with catering partner Company of Cooks, the venue's catering offer aligns to the wider green ethos by incorporating locally sourced and seasonal ingredients, and prioritising plant-based options.

Wellbeing

At the core of Spaces at The Spine stands the belief that the physical and mental wellbeing of delegates, clients and staff is key to successful events and positive experiences. This is why health and wellbeing strategies have been an integral part of the venue's design process.

From outstanding indoor air quality to easy access to drinking water, exposure to natural light in all spaces, monitoring sensors to ensure thermal comfort and calm environments creating a sense of quietness, all ten WELL Standard principles are incorporated within Spaces at The Spine to offer its occupants an improved experience.

Biophilic elements including indoors plant installations, natural materials and repeating patterns found in nature reconnect visitors and delegates with the outdoors and create a healthy and happy environment.

Technology

Technology at Spaces at The Spine is state-of-the-art and next generation, purpose-built to deliver seamless, reliable and secure connectivity to increase client engagement. It was developed in collaboration with leading audio visual and technology suppliers to create a bespoke system that is unique to the venue and one of the most advanced in the area.

VENUE INFORMATION

Room/Space	Dimensions LxWxH (m)	Banqueting	Cabaret	Standing reception	Theatre	Board room
Top Floor						
The Axis	14.61x15.28x3	136	80	180	-	-
Space One	15.02x13.94 x3.5	80	80	170	160	45
Space Two	15x11.92x3.5	64	64	160	150	36
Space One and Two	30.02x11.92 x3.5	168	168	340	330	-
Space Three	4.43x4.47x3	8	-	-	-	8
Floor twelve						
Wolfson Lecture Theatre	12.08x7.35x3	-	-	-	48	-
Wolfson Virtual Theatre	5.55x7.35x3	-	24	30	36	15
Space Four	12.08x7.5x3	32	32	70	60	26
Space Five	12.08x7.5x3	32	32	70	60	26
Space Four and Five	12.08x15x3	64	64	150	140	-
Space Six	7.51x7.62x3	24	24	40	40	18
Space Seven	10.9x7.37x3	32	32	80	70	26
Space Eight	10.9x7.5x3	32	32	80	70	26
Space Nine	12x7.5x3	32	32	90	80	26
Space Seven and Eight	10.9x14.87x3	64	64	160	150	-
Space Seven, Eight and Nine*	10.9x22.37x3	104	104	240	220	-
Space Six, Seven, Eight and Nine*	10.9x30x3	128	128	300	280	-
Floor eleven						
Assessment suites (28)	Various dimensions	-	-	2-6	2-6	-
Space Ten	7.6x7.77x3	-	32	50	40	20
Space Eleven	7.6x7.77x3	-	32	50	40	20
Space Ten and Eleven	15.2x7.77x3	-	64	100	80	-
Ground floor						
The Steps	-	-	-	-	204	-



AINTREE RACECOURSE

thejockeyclub.co.uk/aintree

Famous as the home of the Randox Grand National, Aintree Racecourse, which also includes a 9-hole golf course and historic motor circuit, truly has it all. With capacity to host outdoor events for up to 5,000 people in the iconic Red Rum Garden, as well as indoor capacity for up to 600 guests, Aintree is an adaptable and inspiring venue, purpose-built for large-scale events.

With 3,700 sqm of hard-standing exhibition space, Aintree excels at both indoor and outdoor exhibitions, while also accommodating corporate conferences, team-building activities, gala dinners, and smaller, more intimate events. Located just minutes from Liverpool city centre, it is easily accessible via major motorways and has its own train station.

Events benefit from dedicated event management, a selection of versatile suites and halls, full AV equipment, complimentary on-site parking, and high-quality local, seasonal, and Fairtrade food and drink.

CONTACT:

Telephone: +44 (0)151 522 2922

Email: northwestevents@thejockeyclub.co.uk

X: AintreeRaces

LinkedIn: /company/Aintree-Racecourse

Facebook: Aintree Racecourse

Address: Ormskirk Road, Aintree, Liverpool L9 5AS



VENUE INFORMATION

Room/Space	Dimensions LxWxH (m)	Banqueting	Cabaret	Class room	Theatre	Board room
Golden Miller	35.5 x 19 x 2.4/4.4	500	360	160	600	-
Sunloch Suite	35.5 x 19 x 2.4/4.4	500	360	160	600	-
Princess Royal Suite	42 x 10.2 x 8	300	220	180	300	-
Tommy Wallis Suite	42 x 14 x 3.6	280	175	90	230	50
Corbiere Suite	33 x 12.3 x 2.4/4.4	250	200	100	300	60
Exhibition Hall	33.5 x 20 x 4.2/8	250	360	160	500	-
Papillon Suite	33 x 12 x 2.4/4.4	250	200	100	300	60
Valentine Suite	12.3 x 21.9 x 2.6/4	200	100	80	200	60
Becher's Suite	14 x 21 x 2.6/3.4	120	60	60	150	50
Lord Sefton Boxes (Individual)	5 x 3.9 x 2.4	20	-	-	-	12
QM Boxes Devonloch & Monaveen (Individual)	5.5 x 3.6 x 2.4	20	-	-	-	20
Princess Royal Boxes x 10	42 x 10.2 x 8	-	64	64	100	30
McCoys	23 x 10.7 x 3.5	-	-	-	-	-



HAYDOCK PARK RACECOURSE

thejockeyclub.co.uk/haydock

Picturesque Haydock Park Racecourse, in north-west England, is set in 127 acres of scenic parkland and yet within easy reach of both Manchester and Liverpool airports. As a large-scale venue with 1,000 square metres of indoor exhibition space and 13 acres of exterior hard-standing, Haydock Park is ideally suited for the hosting of major outdoor events.

Haydock Park can accommodate large-scale gatherings of up to 20,000 guests, as well as smaller, more intimate events. Many of the spaces feature panoramic views of the racecourse, providing a striking backdrop for conferences, meetings, and special occasions.

Catering at Haydock Park emphasises local and seasonal produce, including apples, pears, and plums from the venue's own orchard. The introduction of approximately 100,000 bees supports local biodiversity and produces honey used to enhance the dishes served.

Events benefit from dedicated event management, full AV equipment, complimentary on-site parking, award-winning catering, and versatile break-out rooms.

CONTACT:

Telephone: +44 (0)1942 402623

Email: northwestevents@thejockeyclub.co.uk

X: HaydockRaces

LinkedIn: /company/Haydock-Park-Racecourse

Facebook: Haydock Park

Address: Newton-Le-Willows, WA12 0HQ



VENUE INFORMATION

Room/Space	Dimensions LxWxH (m)	Banqueting	Cabaret	Class room	Theatre	Board room
Park Suite	44.36x13.12x 3.21- 3.67	450	350	-	500	-
Premier Suite	19.1 x 21.34 x 2.51	250	120	80	200	45
Lancaster Suite	28.5 x 25 x 2.2	240	100	93	200	45
HorseShoe Suite	23.7 x 8.9 x 2.2	220	80	80	150	40
Whittle Suite	22.41 x 10.2 x 2.63	120	60	60	100	30
Jubilee Suite	18.31 x 9.12 x 2.34	100	60	42	80	30
Sprint Cup	26.9 x 15.2 x 2.8	80	120	-	80	-
Triple Box	7.3 x 7.5 x 2.2	40	30	30	-	30
Double Box	7.2 x 4.8 x 2.08	24	-	24	-	24
The Board room	13.8 x 5.9 x 2.2	24	-	-	-	24
Single Box	5.3 x 3.3 x 1.98	16	-	-	-	16
The Pavilion Suite	2.8 x 6.6 x 2.92 - 4.19	-	140	100	200	84
Davies Suite	7.5 x 5.9 x 2.2	-	40	24	40	24
Final Furlong Bar	44.3 x 4.6 - 11.8 x 2.56	-	100	-	-	-
Sports Bar	36.1 x 16.4 x 2.8	-	100	-	-	-
Leverhulme Suite	7.5 x 5.9 x 2.2	-	56	36	60	-





THE BEATLES STORY MUSEUM

beatlesstory.com

The Beatles Story Museum, Royal Albert Dock is a unique venue to impress your clients.

Packages are fully bespoke with a wide range of catering, beverage, and live entertainment options, as well as event management, gift bags and private tours.

Replica Cavern Club

The replica Cavern Club is the perfect location for your reception, banquet or live-music event. Take your clients back to the 1960s with a tribute band or keep it contemporary with a local artist. This is the perfect venue if you're looking to host an immersive event with a twist.

Fab4 Café

Decked out in a retro design reminiscent of Abbey Road and Revolver, the Fab4 Café is capable of seating 100 people for a banquet-style event or hosting a reception of 200. The café's stage is ready to accommodate your choice of entertainment. Our local catering partners are ready to provide a unique food offering for your clients.

Museum

We take visitors on an immersive journey through the story of The Beatles, with impressive sets and artefacts that allow your guests to experience the atmosphere of the swinging sixties!

Impress your guests with an unforgettable journey through time with a private museum tour, reception or dinner.

CONTACT:

Telephone: +44 (0)151 705 6604

Email: events@beatlesstory.com

X: [beatlesstory](https://twitter.com/beatlesstory)

Facebook: [BeatlesStoryLiverpool](https://www.facebook.com/BeatlesStoryLiverpool)

Address: The Beatles Story, Britannia Vaults,
Royal Albert Dock, Liverpool L3 4AD



VENUE INFORMATION

Room/Space	Theatre	Board Room	Banquet	Reception
Cavern Club	50	30	30	70
Fab4 Café	100	-	100	200
Discovery Zone (Children's space /overspill)	50	30	30	60
Full venue (inc. exhibition access)	200	60	160	270



CROXTETH HALL & COUNTRY PARK

croxteth-hall.co.uk

Housed within a country park setting, this Edwardian stately home is a perfect location for meetings, corporate and private functions alike.

This historic venue, formerly the home of the Earl of Sefton, is situated within a picturesque country estate setting just 20 minutes from Liverpool city centre.

The peaceful and rural surroundings help to create a relaxed atmosphere and the stunning views over the country park are the perfect backdrop for your event. With a variety of attractive, unique and versatile rooms arranged to suit your business or private needs with capacities ranging from 20 to 200 guests.

Queen Anne Wing

The stunning 300-year-old Queen Anne Wing has several historic rooms suitable for meetings, and social events - you're sure to gaze in awe at the magnificent surroundings and beautiful subtle detailing.

Library Suite

With an understated charm, the library suite area is a perfect setting for any occasion. Situated on the ground floor of the main hall with a grand entrance directly from the front lawn area, your event will feel extra special and quite the statement venue.

For further venue information, please contact CityHallsEvents@liverpool.gov.uk

CONTACT:

Email: CityHallsEvents@liverpool.gov.uk

X: [CroxtethHall](https://twitter.com/CroxtethHall)

Instagram: [CroxtethHall](https://www.instagram.com/CroxtethHall)

Facebook: [CroxtethHall](https://www.facebook.com/CroxtethHall)

Address: Croxteth Hall & Country Park,
Croxteth Hall Lane, Liverpool L12 OHB





ST GEORGE'S HALL

stgeorghallliverpool.co.uk

The Grade I listed St George's Hall sits in the heart of Liverpool in more ways than one: it is a place of congregation, commemoration and celebration, which sits proudly amid the incomparable surroundings of the city's cultural quarter.

Recognised as one of the finest neoclassical buildings in the world and also a regular on the big screen, our history-steeped landmark is a prestigious venue choice for large-scale conferences, exhibitions and events.

Our room choices range from cosy and intimate to grand and majestic, with the ability to accommodate all of your AV and event set-up needs. Below is a snapshot overview of our two main spaces available for hire.

The Great Hall

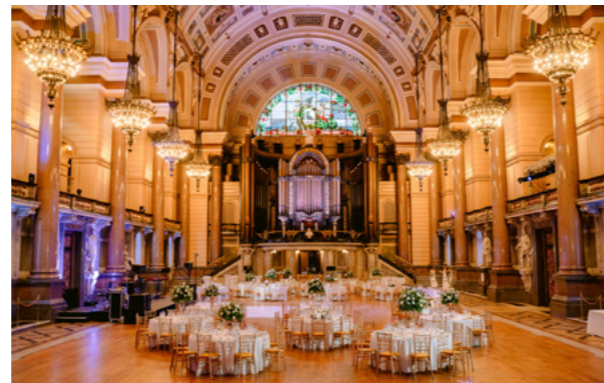
Complete with impressive chandeliers, a spectacular barrel-vaulted ceiling, the imposing Willis organ and ornate stained-glass windows, the Great Hall has hosted many magnificent balls, concerts, festivals, exhibitions, conferences and immersive experiences - it is a grand space adaptable to all of your event needs.

The Concert Room

Famously the stage of Charles Dickens' 'Penny Readings' and many other great performances since, this splendid setting is adorned by statues of goddesses and decorated in gold. What better way to wow your guests or delegates than in this charmingly intimate and magnificent space?

CONTACT:

Email: CityHallsEvents@liverpool.gov.uk
 X: SGHLpool
 Instagram: [stgeorghall_liverpool](https://www.instagram.com/stgeorghall_liverpool)
 Facebook: [StGeorgesHall](https://www.facebook.com/StGeorgesHall)
 Address: St. George's Place, Liverpool, Merseyside L1 1JJ



VENUE INFORMATION				
Room/Space	Theatre Style	Board room	Dining	Drinks reception
Great Hall	800	-	500 maximum (without stage or dance floor) 450 with either stage or dance floor 400 with both stage and dance floor	900
Concert Room	500	-	90	150
Reid/Elms/Cockerill Rooms	80	30	60	60



LIVERPOOL TOWN HALL

liverpooltownhall.co.uk

Recognised as one of the finest surviving town halls of the 18th century due to its impressive Georgian architecture, the Grade I listed Liverpool Town Hall is situated within the business district of the city.

Base of the city's Lord Mayor, this impressive structure has hosted many famous faces over the years: from The Beatles' homecoming to the royal visits of Queen Victoria and Queen Elizabeth II. Away from the world of celebrity, we also host the everyday heroes within the events industry sector - be it through lavish balls, large-scale dinners, conferences and away days. Our grand spaces will leave you feeling spoilt for choice.

The Main Ballroom is flooded with natural daylight and features three magnificent chandeliers, with floor-to-ceiling mirrors at each end of the room, which reflect to create an infinite effect. The mirrors were specially designed so that people could admire themselves during balls and banquets.

The Small Ballroom also boasts three chandeliers and is complete with two minstrel galleries where musicians would serenade their guests while they indulged in the room's ambience of grandeur.

Last but not least, the **Council Chamber** is one of the more quirky spaces that the Hall has to offer. This amphitheatre was designed primarily for the conduct of civic business and features outstanding oak and mahogany woodwork throughout.

CONTACT:

Email: CityHallsEvents@liverpool.gov.uk
 X: [TownHallLpool](https://twitter.com/TownHallLpool)
 Instagram: [liverpooltownhall](https://www.instagram.com/liverpooltownhall)
 Facebook: [townhalllpool](https://www.facebook.com/townhalllpool)
 Address: Liverpool Town Hall, High Street, Liverpool, L2 3SW



VENUE INFORMATION					
Room/Space	Dimensions LxWxH (m)	Cabaret/Dining	Theatre	Board room	Drinks Reception
Main Ballroom	27x12x12	180-210	270	-	270
Small Ballroom	17x8x12	50-80	130	40	150
Reception rooms (East & West)	8x8x8	40	70	25	60
Council Chamber	27x12x4	-	220	-	100



HILL DICKINSON STADIUM
hilldickinsonstadium.com/venue-hire

Hill Dickinson Stadium is Liverpool's newest waterfront events destination, offering flexible spaces with river and pitch views, bespoke hospitality and large-scale outdoor areas. Designed for conferences, exhibitions, dinners and brand activations, it brings modern versatility to a landmark dockside location.

Hill Dickinson Stadium offers a diverse collection of versatile event spaces, including restaurants, bars, executive suites and large adaptable rooms suitable for conferences, networking, product launches and private dining.

For outdoor events, the 30,000m² Budweiser Plaza delivers one of Liverpool's largest open-air event spaces - ideal for festivals, markets, brand activations, screenings and large-scale public gatherings.



VENUE INFORMATION					
Room/Space	Theatre	Cabaret	Banqueting	Board room	Reception
Beyond	Restaurant Layout				
The Yard	490	384	550	-	555
Navigator	Restaurant Layout				150
Blue Line	Restaurant Layout				230
Merchants	Restaurant Layout				350
Moore	Restaurant Layout				150
The Arch	Restaurant Layout				200
1878 Bar & Kitchen	Restaurant Layout				96
West Directors Club Super Box	24	24	24	24	24
Domingo's Bar & Grill	100	64	220	24	300
Dixie's Sports Bar	96	80	100	24	200
Queen's Head Pub	40	-	-	-	100
The Prince Rupert	25	-	-	-	100
Kendall's Social	430	320	400	-	500
Village Street	-	-	-	-	1,858
East Stand Boxes	-	-	-	10	10
East Stand Super Boxes	-	-	-	20	20



Catering is delivered by Aramark's culinary team, offering creative, sustainably driven and locally inspired menus across seated dining, receptions, street-food style service, and bespoke hospitality.

With modern AV infrastructure and dedicated event support, Hill Dickinson Stadium provides a fully integrated venue solution for organisers looking to deliver impactful, memorable events in the heart of Liverpool's historic waterfront.

CONTACT:

Email: evertonevents@aramark.co.uk
 X: [evertonstadium](https://twitter.com/evertonstadium)
 LinkedIn: [Hill Dickinson Stadium](https://www.linkedin.com/company/hill-dickinson-stadium)
 Instagram: [evertonstadium](https://www.instagram.com/evertonstadium)
 Facebook: [Hill Dickinson Stadium](https://www.facebook.com/Hill-Dickinson-Stadium)
 Address: Hill Dickinson Stadium, Regent Road, Liverpool, L3 0BW





NATIONAL MUSEUMS LIVERPOOL
liverpoolmuseums.org.uk/venuehire

National Museums Liverpool offers a wide range of events and spaces set against a unique backdrop of historic artefacts and world-class art.

Enjoy first-class service while embedded in the history, culture and creativity of our venues. Hold a sophisticated drinks reception immersed in the historic Walker Art Gallery or host a private dinner against the stunning backdrop of The Three Graces at Museum of Liverpool.

The team

Our award-winning Hosted by National Museums Liverpool events team are experts at what they do: taking pride in their ability to make your vision a reality.

Curious chefs, creative food

At the heart of your event is the food. Fine dining or buffet, canapés or street food, we know how to create extraordinary experiences through exceptional service and bold gastronomy.

Supporting History, Art and Culture

All event profits go back into National Museums Liverpool, helping to support our work and the future of our world-class museums and galleries.



CONTACT:

Telephone: +44 (0)151 478 4437

Email: venuehire@liverpoolmuseums.org.uk

Instagram: [hostedbynml](https://www.instagram.com/hostedbynml)

Address: Hosted by National Museums Liverpool, NML Trading Ltd, World Museum, William Brown Street, Liverpool L3 8EN



VENUE INFORMATION					
Venue Name	Description	Theatre	Boardroom	Dining	Reception
Museum of Liverpool	With views over the Mersey and The Three Graces, our event spaces are perfect for filming, meetings, and conferencing.	200	30	150	400
Walker Art Gallery	One of the country's best-known galleries, this neoclassical building was designed to impress.	-	-	80	300
World Museum	With a stunning four-storey atrium, purpose-built lecture theatre and Victorian chambers.	-	30	150	300
Sudley House	In Liverpool's leafy suburbs, this beautiful home can facilitate private dining, drinks receptions, and more.	-	-	40	50
Lady Lever Art Gallery	In picturesque Port Sunlight Village, choose our rotunda or main gallery to wow your guests.	-	-	90	250



BLACKSTOCK MARKET

blackstockmarket.co.uk

Blackstock Market, Liverpool's vibrant indoor venue, offers versatile spaces for hire, including a high-end function suite and a Mediterranean-themed rooftop terrace. With award-winning facilities and unmatched local charm, it's perfect for corporate events, weddings, and private parties.

Lily's Lounge

A private, sophisticated suite ideal for corporate functions, meetings, and social gatherings, accommodating up to 140 guests. Lily's Lounge combines style with full accessibility across three unique areas, including a bridge overlooking the main bar. In-house catering, a fully stocked bar, and elegant decor provide a professional yet inviting setting for your event.

Blackstock Roof Garden

The city's largest rooftop terrace, hosting up to 240 guests in a Mediterranean-inspired, fully private outdoor area. Available all year, it's perfect for corporate receptions, networking events, and product launches, with the comfort of indoor facilities.

Whole Venue Hire

Hire the entire venue to accommodate up to 2000 guests, ideal for company-wide conferences and significant corporate occasions. This option utilises all spaces, providing seamless transitions between areas with 10Gb WiFi, NDI-connected screens, and in-house catering for a fully customisable corporate experience.

Theatres

Three theatre-style spaces, purpose-built and equipped with top-spec AV, accommodating 147-589 guests. Perfect for presentations, training, and performances, each theatre has live-streaming capabilities and sightline-free seating, ensuring all attendees have a clear view. With full accessibility, they provide an exceptional setting for impactful corporate events.

Explore Blackstock Market - Liverpool's adaptable venue, where modern facilities meet historic charm to create the perfect setting for your corporate event.



CONTACT:

Telephone: +44 (0)7943 188917
 Email: admin@blackstockmarket.co.uk
 Instagram: [blackstockmarketlpool](https://www.instagram.com/blackstockmarketlpool)
 Facebook: [Blackstockmarketliverpool](https://www.facebook.com/Blackstockmarketliverpool)
 Address: Blackstock Market, 15 Blackstock Street, Liverpool L3 6ER



GRAVITY MAX LIVERPOOL

gravity-global.com/max/liverpool

Right in the heart of Liverpool ONE, Gravity MAX Liverpool is the ultimate destination for memorable events. Whether you're planning a corporate team day, a family celebration, a charity fundraiser, or a group night out, we've got the space, the activities, and the energy to make it unforgettable.

Step inside over 100,000 sq. ft. of excitement. From multi-level E-Karting and AR Bowling to Digital Darts, VR experiences, Street Golf, Batting Cages and more, there's something for everyone.

Our versatile event spaces are ready to host all kinds of occasions for up to 1500 guests. We've got multiple event spaces available, including Liverpool's largest roof terrace, Eden Bar and Isaac Newton Conference Suite. Exclusive hire options are also available.

Planning is easy with a range of food and drink packages to suit your event. From relaxed sharing platters to themed menus and group refreshments, everything can be tailored to your needs. Our friendly, experienced team is on hand to help you plan and deliver events with honesty, creativity, and a little Gravity magic.

So, whether it's team building, a birthday, a charity event, or just a reason to bring people together, Gravity MAX Liverpool is where fun and excitement come to life - all under one roof.

CONTACT:

Telephone: +44 (0)330 159 5815
 Email: corporate.liverpool@gravity-uk.com
 Instagram: [gravitymax_liverpool](https://www.instagram.com/gravitymax_liverpool)
 LinkedIn: [gravityactiveentertainment](https://www.linkedin.com/company/gravityactiveentertainment)
 Facebook: [gravitymaxuk](https://www.facebook.com/gravitymaxuk)
 Address: 1 Kenyon's Steps, Chavasse Park, Liverpool ONE L1 3DF



VENUE INFORMATION

Room/Space	Max Capacity
Isaac Newton Suite	Theatre Style - 84
	Banquet Style - 52
	Cabaret Style - 52
	Classroom Style - 40
	Other options available including boardroom and u-shaped.
Terrace	550
Secret Garden	112
Eden Bar	110
Full Venue	1500



HOPE STREET HOTEL

hopestreethotel.co.uk

Multi award-winning Hope Street Hotel is Liverpool's original independently-run boutique hotel. Located in the Georgian quarter, between the city's two cathedrals, the look is city chic - Cheshire brick, glass, iron pillars and pitch pine beams with bespoke cherry, oak and walnut furniture.

149 bedrooms across eight room categories, including rooftop suites with spa baths. Room amenities include: Temple Spa products, bathrobes and slippers, coffee makers, still and sparkling mineral waters, high-speed Wi-Fi, Sky and BT Sports. There is a guest office, 24-hour gym and very helpful and informative 24-hour reception and room service.

Nine event spaces, include fifth floor rooms with huge rooftop terraces and spectacular city views. And Liverpool's only hotel cinema (with its own bar). The hotel caters for all events from private dinners for 10 to celebrations for up to 150 guests. Two destination restaurants - The London Carriage Works (Modern British, AA Rosette, AA Notable Wine List) and 1931 (hand-stretched pizza, pasta and sharing boards).

Hope Street Hotel Spa has been awarded 'Best Spa Northwest England' by The Times and Sunday Times 2024 and 2025. The spa has both indoor and outdoor pools, extensive thermal journey, relaxation rooms, hammam, treatment rooms, barre studio and 24/7 gym.

CONTACT:

Telephone: +44 (0)151 709 3000
 Email: events@hopestreethotel.co.uk
 Instagram: hopestreethl
 X: hopestreethl
 LinkedIn: Hope Street Hotel
 Facebook: hopestreethl
 Address: 40 Hope Street, Liverpool L1 9DA



VENUE INFORMATION						
Room/Space	Dimensions LxWxH (m)	Theatre	Board room	Banquet	Cabaret	Class room
Fifth One	12 x 5.5 x 3	70	30	50	31	18
Fifth Two	15.7 x 10.3 x 3	130	30	110	72	50
Boardroom	7 x 3.9 x 2.3	-	12	12	-	-
The Old Bookroom	9 x 6.4 x 2.6	50	20	50	32	18
Conference Room	9 x 6 x 2.3	40	24	50	24	16
The Residents' Lounge	23.5 x 13.7 x 2.3	40	24	70	25	24
First Room	5.6 x 3.4 x 2.5	-	14	-	-	-
Cinema	12.2 x 6 x 2.5	39	-	-	-	-
Clubroom	13.8 x 5.9 x 2.5	90	30	-	32	20



INNSIDE BY MELIÁ LIVERPOOL

inside.com/Liverpool

British style, contemporary architecture, and Spanish hospitality combine to bring INNSIDE by Meliá Liverpool to life in one of the city's most dynamic districts. Created to inspire the savvy and the young at heart, the hotel gives guests the freedom to transition smoothly between work, leisure and wellbeing while staying effortlessly themselves.

With sustainability rooted in everything we do, each stay is enriched with environmentally responsible details and minimalist design that help protect the world we explore. Wellbeing is seamlessly built in, with a 24-hour gym featuring advanced E-Fitness technology and virtual personal training.

A fully dedicated floor to meetings and events provides a versatile hub for conferences, workshops and corporate gatherings, complete with integrated AV, high-speed Wi-Fi, and flexible layouts. The standout Big Ideas Space adds a creative twist, offering a bright, relaxed environment with interactive tools for collaborative sharing with teams anywhere.

Dining is at the heart of the experience, with our main restaurant serving international cuisine perfect for business lunches, relaxed dinners or group dining.

Rising above it all, the 18th-floor 360 Sky Bar is one of Liverpool's most impressive attractions. With panoramic views sweeping across the city and waterfront, it's a vibrant setting for drinks, networking receptions and private celebrations.

At INNSIDE Liverpool, every stay sparks curiosity and invites guests to discover more.

CONTACT:

Telephone: +44 (0)151 832 0960
 X: ininsideuk
 Instagram: Ininside_by_melia_uk
 Facebook: IninsidebyMeliaUKLiverpool
 Address: 43 Old Hall Street, Liverpool L3 9PP



VENUE INFORMATION						
Room/Space	Dimensions LxWxH (m)	Banqueting	Cabaret	Class room	Theatre	Board room
Headline Suite	13.27 x 21.76 x 3.1	240	200	183	346	104
Headline 1	7 x 15.08 x 3.1	72	60	42	123	36
Headline 2	7 x 13.26 x 3.1	72	60	42	111	33
Headline 3	7.3 x 13.26 x 3.1	72	60	42	112	33
Headline 1 & 2	13.27 x 14.52 x 3.1	144	120	125	234	70
Headline 2 & 3	13.27 x 14.76 x 3.1	144	120	118	223	67
Editorial Suite	6.1 x 13.49 x 3.1	80	64	59	112	33
Editorial 1	6.1 x 7.3 x 3.1	40	32	29.5	56	16.5
Editorial 2	7.3 x 6.1 x 3.1	40	32	29.5	56	16.5
News Room	7.46 x 13.49 x 3.1	80	64	56	106	31
Big Ideas	7.3 x 13.49 x 3.1	80	64	58	110	33



KNOWSLEY HALL

knowsleyhall.co.uk

Set in 2,500 acres of picturesque parkland, Knowsley Hall is an unparalleled venue to host your next event. From entertaining distinguished guests and clients, to providing an inspirational setting for a conference, team building, board meeting or gala dinner, their dedicated team will deliver first class service to ensure an exceptional experience.

The historic estate, which is home to The Earl and Countess of Derby, boasts over 600 years of rich history and has entertained royalty, heads of state, and distinguished guests over the centuries.

Knowsley Hall is only a 20-minute drive from Liverpool city centre and 35 minutes from Manchester, with rail and airport links and access by helicopter.

Knowsley Hall is ideal for smaller meetings including away days, corporate planning sessions and retreats.

All meetings at Knowsley Hall benefit from the beautiful outdoor space, as soon as you drive onto the private Knowsley Estate you leave the hustle and bustle behind. An array of activities can be arranged in the grounds including visits to Knowsley Safari.

Knowsley Hall has been awarded 5* Gold status by Visit Britain and is the only stately home to carry this award. The Countess of Derby has personally designed all 16 bedrooms and they feature original artworks and luxurious en-suite bathrooms.

CONTACT:

Telephone: +44 (0)151 489 4827

Email: events@knowsley.com

LinkedIn: [knowsley-hall](https://www.linkedin.com/company/knowsley-hall)

Instagram: [knowsleyhall](https://www.instagram.com/knowsleyhall)

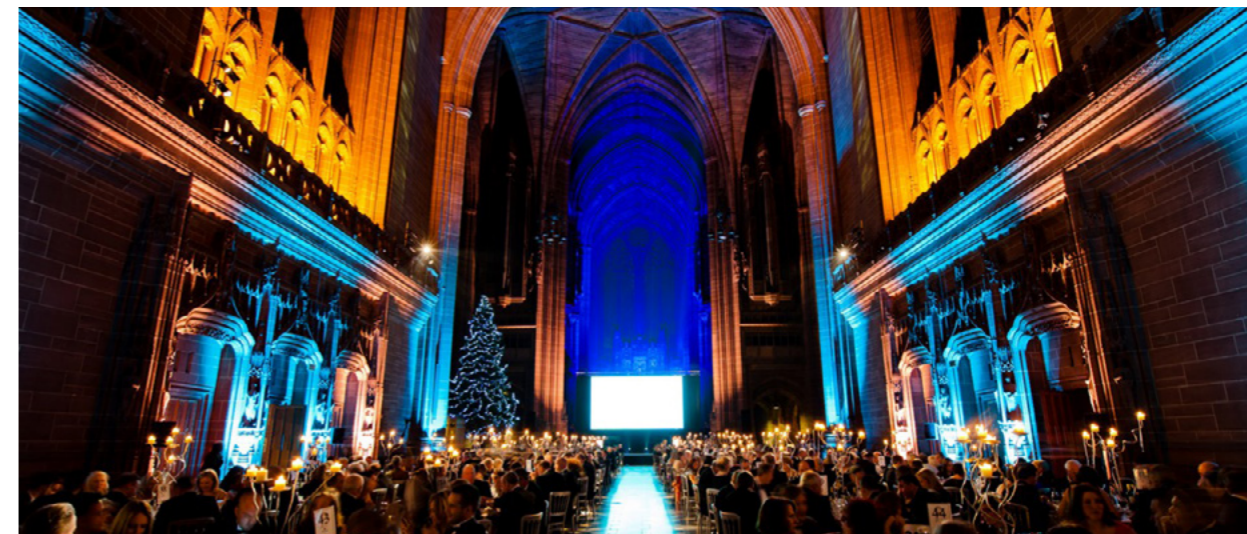
Facebook: [knowsleyhall](https://www.facebook.com/knowsleyhall)

Address: Knowsley Hall, Prescot, Merseyside L34 4AG



VENUE INFORMATION

Room/Space	Dimensions LxWxH (m)	Banqueting	Cabaret	Reception	Theatre	Board room
State Dining Room	18 x 10	132	72	180	160	46
Stucco Ballroom	14 x 10	80	48	160	132	-
Breakfast Room	10 x 5	30	24	40	-	-
Music Room	8 x 5	24	16	-	30	-
Walnut Drawing Room	14 x 10	-	-	80	-	-
Sondes Room	7 x 4	18	-	-	-	18



LIVERPOOL CATHEDRAL

liverpoolcathedral.org.uk

Imagine holding your event in the jaw dropping iconic surroundings of Britain's biggest cathedral to provide a stunning backdrop to your awards evening or gala dinner.

The Main Space

This breath-taking space can host receptions up to 2,000, or in complete contrast a dinner for as few as 30, creating an awe-inspiring evening. The Main Space provides a truly memorable setting for any event.

The Well

Although smaller than the Main Space, the Well is no less spectacular. Seating dinner guests from 20 to 320, it offers an exceptional view of the Cathedral through the Dulverton Bridge.

The Lady Chapel

The oldest, most ornate space in the Cathedral, the Lady Chapel is perfect for receptions up to 250 people. Guests can enter the Lady Chapel by private entrance, allowing for the rest of the Cathedral to be revealed as guests make their way to dinner.

The Sir Giles Gilbert Scott Function Suite

Named after our architect, the function suite has two oak panelled rooms perfect for conferences, meetings and private dinners up to 100.

Whether its a gala dinner for 700 or a standing reception of 2,000 our team of dedicated event professionals are on hand every step of the way.

CONTACT:

Telephone: +44 (0)151 702 7217

Email: events@liverpoolcathedral.org.uk

X: [livcathedral](https://twitter.com/livcathedral)

Facebook: [LiverpoolCathedral](https://www.facebook.com/LiverpoolCathedral)

Instagram: [livcathedral](https://www.instagram.com/livcathedral)

Address: Liverpool Cathedral, St. James Mount, Liverpool L1 7AZ



VENUE INFORMATION

Room/Space	Dimensions LxWxH (m)	Theatre	Board room	Rounds	Reception
Main Space	51 x 22	1,200	-	1,000	2,000
Well	22 x 11	450	-	320	650
Lady Chapel	27.8 x 6.9	200	-	-	250
Concert Room	15 x 10 x 3.4	100	40	80	120
Dining Room	15 x 10 x 3.4	80	30	100	150





LIVERPOOL FOOTBALL CLUB

liverpoolfc.com/events

With a tradition of organising major events almost every week, Liverpool Football Club know what's needed to stage a successful conference. Experience has shown that there's no substitute for all-round quality of service and meeting the needs of our customers.

When you add our world-famous stadium into the mix, you can see why hosting a conference at Anfield will be a unique event that will help you achieve your business goal.

We offer a comprehensive range of conference formats with a choice of superbly appointed suites, capable of accommodating up to 2,000 informally and a dinner for 550 or conference theatre style for up to 600 people in air-conditioned comfort. Additionally, we have a host of syndicate rooms - multi-functional and versatile enough for any boardroom or client meetings.

Many of our Main Stand Lounges offer stunning views of the Anfield pitch and the city of Liverpool beyond, creating a great talking point for your delegates.

CONTACT:

Telephone: +44 (0)151 264 2222
 Email: events@liverpoolfc.com
 X: LFC_Events
 Facebook: LFCEvents
 Address: Anfield Road, Liverpool, Merseyside L4 0TH

Venue Layout	Japan Airlines	The Beat	Anfield Code	Legends	Carlsberg Dugout
Theatre	60	140	140	60	600
Classroom	20	50	50	20	300
Cabaret	40	80	80	40	336
U-Shape	20	30	30	20	40
Boardroom	20	20	20	20	30
Dinner	60	140	140	60	540
Buffet	110	300	300	110	1500
Drinks Reception	130	300	300	130	2000

Venue Layout	Beautiful Game	Chemistry	Executive Lounge	Reds Lounge	Sevens/Eights
Theatre	270	270	80	300	50
Classroom	100	100	20	40	30
Cabaret	208	208	56	112	48
U-Shape	30	30	30	30	25
Boardroom	20	20	20	20	20
Dinner	370	370	70	220	80
Buffet	400	400	150	340	80
Drinks Reception	454	454	150	340	80

Venue Layout	Shanks	Paisley	European	Champions
Theatre	150	150	150	300
Classroom	60	60	50	60
Cabaret	64	120	80	112
U-Shape	20	20	20	20
Boardroom	20	20	20	20
Dinner	200	130	150	200
Buffet	400	300	212	300
Drinks Reception	400	300	212	300

THE ROYAL LIVER SUITE

royalliversuite.com

Imagine welcoming your guests into Liverpool's most iconic location - Royal Liver Building, where each corner whispers stories of the past and inspires future success. Liverpool's landmark venue features panoramic views over the River Mersey and a prime location on Liverpool's world-famous waterfront. For corporate event organisers seeking stunning surroundings, The Royal Liver Suite offers the perfect blend of contemporary and traditional, perfect for any occasion.



The Ballroom

An exclusive space for drinks receptions, parties and more! Boasting decorative ceiling detail, marbled flooring, gallery-style windows and doors opening onto our Royal Balcony providing a stunning backdrop of the Pierhead.

Mersey Suite

With views across the River Mersey and Cunard Building this blank canvas, brandable space easily transforms into a versatile conference or dining area. Featuring high ceilings and full-length windows providing a space flooded with natural daylight. Ideal for your conference, corporate reception, or private events and dinners.

Historic Boardroom

Located on the ninth floor, the luxurious oak-panelled Boardroom boasts original features, providing a historic backdrop for more intimate conferences, meetings and private dining.

Atrium

Situated on the Ground Floor, the atrium offers a versatile, modern space. Offering a bar area and an array of additional hosting areas, including lounge seating and booths.

CONTACT:

Telephone: +44 (0)151 245 1770
 Email: enquiries@royalliversuite.com
 Address: Royal Liver Building, Pier Head, Liverpool L31HU

Room/Space	Theatre	Cabaret/Dining	Banqueting	Board room	Drinks Reception
Mersey Suite	200	150-200	200	-	200
Ballroom	100	60	60	-	160
Boardroom	-	-	-	30	30
Atrium Cafe Bar	-	-	-	-	-





SHAKESPEARE NORTH PLAYHOUSE

shakespearenorthplayhouse.co.uk

Exceptional spaces, tailored packages and expert event support. This stunning venue, just a 20-minute drive from Liverpool and 35 minutes from Manchester, is ideally situated to bring people together.

Cockpit Theatre

Host conferences, product launches, live recordings, awards, and presentations in our circular, oak-framed auditorium, complete with full tech support for an unforgettable event.

The Gallery

With dual projection offering maximum impact for presentations or adding a dynamic backdrop for events. Connect with our Bar & Kitchen and ground floor outdoor space to flex capacity and event options.

The First Floor

Equally ideal for drinks receptions, networking buffets, awards ceremonies, celebrations, and formal dining events, our light-filled long room features its own bar. Add the adjacent Meeting Rooms for boardroom or breakout space.

The Studio

With large-scale video projection, exceptional sound, and the option of tiered seating, this highly flexible space is perfect for presentations, dinners, dancing, and celebrations.

The Hub & Foyer

This versatile area can be adapted to meet your needs. Add the connecting foyer for a single large space, or keep separate for break-out, refreshment and workshop use or post-event networking and receptions. Pair with the studio for a complete workshop, business marketplace or conference event.

CONTACT:

Telephone: +44 (0)151 433 7156

Email: events@shakespearenorthplayhouse.co.uk

LinkedIn: [shakespeare-north-playhouse](https://www.linkedin.com/company/shakespeare-north-playhouse)

Instagram: [shakespearenorthplayhouse](https://www.instagram.com/shakespearenorthplayhouse)

Facebook: [ShakespeareNorthPlayhouse](https://www.facebook.com/ShakespeareNorthPlayhouse)

Address: Prospero Place, Prescot L34 3AB



VENUE INFORMATION

Room/Space	Conference/Theatre	Meeting	Reception
Cockpit Theatre	325	-	-
The Gallery	50	50	80
The Hub (with foyer)	50 (80)	40 (60)	60 (120)
The First Floor	60	80	100
The Studio	87	35	60
Bar & Kitchen	-	75	150
Sir Ken Dodd Performance Garden	120	40	80
Meeting Room 1	-	8	-
Meeting Room 2	20	20	-



TITANIC HOTEL LIVERPOOL

titanichotelliverpool.com

Be inspired at the award-winning Titanic Hotel Liverpool.

The Titanic Hotel Liverpool has established itself as an iconic Liverpool hotel and conference venue. As one of the greatest examples of the restoration of a historic building, the once derelict warehouse has been transformed into a flagship destination for both business and leisure visitors.

Rum Warehouse and West Bay are impressive conference, banqueting and exhibition venues, as well as a popular choice for weddings. Its versatility allows the space to be transformed into the most extraordinary venue for a range of occasions.

Rum Warehouse

Rum Warehouse is a beautifully renovated 1950's warehouse, a generous venue which boasts 789m² of flexible event spaces seating up to 550 guests. With floor to ceiling glazing and dockside views it can only inspire all who gather here. In addition a range of functional meeting and breakout spaces are incorporated as are catering facilities and spacious accommodation to match.

West Bay

West Bay is an exceptional and unique event space reflective of our rich maritime heritage and striking warehouse design with stone floors, steel pillars and vaulted brick ceilings in keeping with the out of ordinary style within the hotel and venue. West Bay has floor to ceiling windows with striking views of the dock along with outside space on the colonnade ideal for summer drinks receptions. West Bay can accommodate up to 180 guests and is perfect for corporate occasions and a favourite for spectacular weddings.

CONTACT:

Telephone: +44 (0)151 482 5783

Email: sales@titanichotelliverpool.com

X: TitanicHotelLiv

Instagram: [titanichotelliverpool](https://www.instagram.com/titanichotelliverpool)

Facebook: [titanichotelliverpool](https://www.facebook.com/titanichotelliverpool)

Address: Titanic Hotel Liverpool, Stanley Dock Regent Road, Liverpool L3 0AN



VENUE INFORMATION

Room/Space	Dimensions LxWxH (m)	Banqueting	Cabaret	Class room	Theatre	Board room
Rum Warehouse Ground Floor	38.1 x 20.7 x 4.8m	500	450	472	600	-
Mezzanine 1, 2 & 3	29 x 15.5 x 3.3m	340	210	256	554	120
Mezzanine 1	7.5 x 15.5 x 3.3m	84	56	54	88	40
Mezzanine 2	11 x 15.5 x 3.3m	120	88	90	180	40
Mezzanine 3	10.5 x 15.5 x 3.3m	110	88	84	176	40
Breakout Lounge	29.3 x 4.9 x 3.3m	-	-	-	-	-
Boardroom	8.9 x 5.8 x 3.3m	-	-	-	-	14
Stanley's Bar & Grill	38.5 x 12.6 x 5m	160	-	-	-	-
The Gallery Private Dining Event Space	10.2 x 6.87 x 2.8m	20	-	-	-	-
West Bay	22 x 20 x 5m	180	100	-	160	-
401 Private Event Space	13.6 x 7 x 5m	40	32	16	50	-



THE WORLD OF GLASS

worldofglass.com

The World of Glass is a unique heritage venue in St Helens, set within a historic glassmaking site. With versatile event spaces, creative experiences, and inspiring surroundings, it offers a memorable setting for meetings, celebrations, and corporate events.

The Auditorium provides a contemporary industrial setting with cinema-style projection, high-quality sound, and optional theatre seating, ideal for presentations, workshops, and evening events.

The Godfrey Pilkington Gallery is a bright, flexible ground-floor space equipped with projection and sound, perfect for receptions, talks, and private functions.

The Sankey Suite offers a light-filled meeting room with full AV facilities and optional mezzanine breakout area for catering or networking.

Our café overlooks the canal and heritage site, offering the largest gathering space with floor-to-ceiling windows and a relaxed, welcoming atmosphere.

For something unforgettable, private glassblowing experiences can be added to your event, or you can hire the museum exclusively for a one-of-a-kind venue experience.

CONTACT:

Telephone: +44 (0)1744 22766

Email: bookings@worldofglass.com

Instagram: [theworldofglassthelens](https://www.instagram.com/theworldofglassthelens)

LinkedIn: [the-world-of-glass-st-helens](https://www.linkedin.com/company/the-world-of-glass-st-helens)

Facebook: [theworldofglass](https://www.facebook.com/theworldofglass)

Address: Chalon Way E, St Helens WA10 1BX



BRITISH MUSIC EXPERIENCE

britishmusicexperience.com

Located in the Grade II Listed Cunard Building, this venue offers a unique setting surrounded by a remarkable collection of British pop history, including stage outfits, instruments, and memorabilia. Guests can enjoy hands-on experiences in the Interactive Studio with instruments, a vocal booth, and a dance studio.

The space is versatile, hosting events such as drinks receptions, product launches, live broadcasts, conferences, award shows, and dinners. Key features include:

- **Main Stage:** Ideal for performances, with lighting, audio console, and projection screen.
- **Side Screens:** Great for branding or additional content.
- **Smaller Spaces:** Discovery Zone, Star Café, and green room facilities.

The event team partners with reputable local caterers and technical experts to deliver tailored, client-focused hospitality.

CONTACT:

Telephone: +44 (0)151 519 0915

Email: info@britishmusicexperience.com

Instagram: [britishmusicexperience](https://www.instagram.com/britishmusicexperience)

Facebook: [britishmusicexperience](https://www.facebook.com/britishmusicexperience)

TikTok: [britishmusicexperience](https://www.tiktok.com/@britishmusicexperience)

Address: Cunard Building, Liverpool L3 1DS



THE BLUECOAT

thebluecoat.org.uk

Host your next event at the Bluecoat - Liverpool's Contemporary Art Centre, where history, culture, and unforgettable experiences come together. From inspiring spaces and standout catering to a mission that gives back, every detail is designed to make your event meaningful and memorable.

Whether you are looking for a small, intimate meeting room, a large conference space, or a private dining experience, the Bluecoat offers a variety of unique spaces to suit your needs. From 10-250 guests, find flexible spaces to match your moment.

Make a lasting impact with your next event in the heart of the city.

CONTACT:

Telephone: +44 (0)151 702 5324

Email: events@thebluecoat.org.uk

LinkedIn: [the-bluecoat/company](https://www.linkedin.com/company/the-bluecoat/company)

Instagram: [the_bluecoat](https://www.instagram.com/the_bluecoat)

Facebook: [thebluecoat](https://www.facebook.com/thebluecoat)

Address: The Bluecoat, School Lane, Liverpool L1 3BX



CROWNE PLAZA LIVERPOOL CITY CENTRE

cpliverpool.com

With a central waterfront location and dock side views the hotel is perfect for all your event needs.

Our experienced team has mastered the art of managing events from breakouts to banquets. The Princes Suite at Crowne Plaza Liverpool is a flexible space that is perfect for conference, corporate dinners, weddings and charity functions. Seven top-class conference suites complete with air conditioning, natural daylight and dock views.

CONTACT:

Telephone: +44 (0)151 243 8000
 Email: guestrelations@cpliverpool.com
 X: CrownePlazaLiv
 Facebook: CrownePlazaLiverpool
 Instagram: cpliverpool
 Address: 2 St Nicholas Place,
 Princes Dock, Liverpool L3 1QW



EUREKA! SCIENCE + DISCOVERY

discover.eureka.org.uk

Eureka! Science + Discovery is a new and unique events venue.

As a charity, income generated from room and private hire helps us continue our educational programmes and exhibition experiences, so you can do-good and feel-good hiring our spaces too!

- Fully accessible spaces for events from 10 to 90 seated delegates.
- Private venue hire for up to 2,000 guests at a unique, fun, interactive attraction.
- Riverside location at Seacombe Ferry Terminal with direct access from Mersey Ferry plus large on site car and coach parking.
- Fantastic views of the Liverpool waterfront.
- Full range of in-house catering options, with dedicated team to support your event.
- All delegates for private events receive free return ferry travel from Pier Head to Eureka! Science + Discovery.

CONTACT:

Telephone: +44 (0)151 323 0056 / 0033
 Email: hello@eureka.org.uk
 Instagram: eurekadiscovery
 Facebook: eurekadiscovery
 TikTok: eurekadiscovery
 Address: Seacombe Ferry Terminal, Victoria Place
 Wallasey CH44 6QY



DELTA HOTELS BY MARRIOTT LIVERPOOL CITY CENTRE

delta-hotels.marriott.com

Discover our newly renovated hotel in Liverpool City Centre and opposite Liverpool Lime Street station. The hotel's 147 bedrooms are presented across five room types including 26 spacious twin double rooms, 26 superior rooms and three suites which offer fantastic views across the Liverpool Skyline.

The Merchant Bar is a private hire space, perfect as a larger breakout or team building room. The Merchant Suite is the largest of nine function rooms accommodating up to 240 for dinner and boasts a built-in rear projection area, as well as a large elevated outdoor terrace. There is also a conference floor which is perfect for those smaller meetings.

The hotel is close to major transport links and situated near to Liverpool's iconic venues.

CONTACT:

Email: liverpool.events@deltahotels.com
 Instagram: [liverpooldeltamarriott](https://www.instagram.com/liverpooldeltamarriott)
 Facebook: DeltaLiverpool
 LinkedIn: Delta Hotels by Marriott
 Liverpool City Centre



HOLIDAY INN LIVERPOOL CITY CENTRE

hiliverpool.com

The 4-star Holiday Inn, opposite Liverpool Lime Street Station, offers 139 rooms near St. George's Hall, Empire Theatre, universities, cathedrals, Liverpool Experience Campus. A dedicated conference wing accommodates up to 300 people, with flexible breakout spaces for events and meetings. Voted IHG's top UK hotel for eight years, it's known for cleanliness, guest experience, and city-inspired design.

- Adjacent car park: 600 spaces with discounted rates.
- Seven air-conditioned meeting rooms: Natural daylight and excellent lighting.
- Banqueting capacity: Up to 250; meetings up to 400.
- IHG loyalty points: Earn for accommodation & events.
- Wi-Fi: 100% signal throughout the hotel.
- The team ensures inspiring, budget-friendly, and sustainable conferences with award-winning service in Liverpool's vibrant heart.

CONTACT:

Telephone: +44 (0)151 709 7090
 Email: reservations@hiliverpool.com
 X: HI_Liverpool
 Facebook: Holiday Inn Liverpool - City Centre
 Instagram: [holidayinn_liverpool](https://www.instagram.com/holidayinn_liverpool)
 Address: Lime Street, Liverpool L1 1NQ



LIVERPOOL HOPE UNIVERSITY

hope.ac.uk/conferences

Liverpool Hope University offers versatile conference and meeting facilities across two campuses: Hope Park in Childwall and the Creative Campus in the city centre. Each location blends unique architecture and exceptional services, creating memorable experiences for all delegates.

- **Unique venues:** Modern architecture and listed buildings.
- **Flexible spaces:** Host 2-500 guests, designed to enhance events.
- **Year-round facilities:** Includes Social Sciences Building, EDEN Building, and Capstone Theatre.
- **Professional support:** Experienced AV team and award-winning catering.
- **On-site accommodation:** 330+ en-suite bedrooms and parking at Hope Park.

CONTACT:

Telephone: +44 (0)151 291 2147

Email: conferences@hope.ac.uk

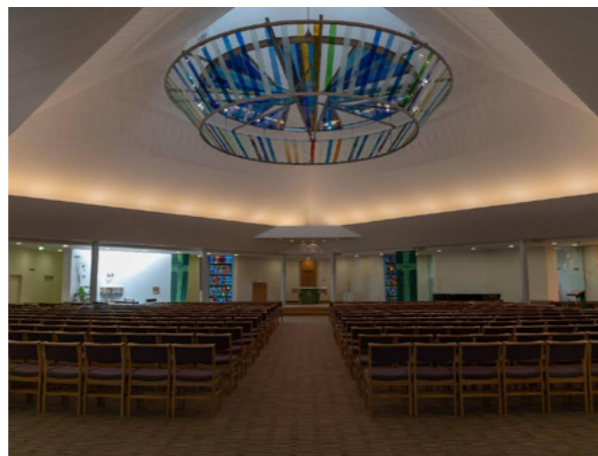
X: HopeConfEvents

Instagram: [hopeconfevents](https://www.instagram.com/hopeconfevents)

Facebook: [HopeConferencingandEvents](https://www.facebook.com/HopeConferencingandEvents)

TikTok: [Conferencingandeventsathope](https://www.tiktok.com/@conferencingandeventsathope)

Address: Hope Park Campus, Taggart Ave L16 9JD
Creative Campus, Shaw Street L6 1HP



THE MUNICIPAL HOTEL & SPA LIVERPOOL - MGallery

municipalhotelliverpool.com

The Municipal Hotel & Spa, MGallery Liverpool is the city's only 5-star hotel, offering refined luxury, exceptional service, and a beautifully restored historic setting. Enjoy elegant rooms, a tranquil spa, and unforgettable experiences in the heart of Liverpool. Exclusive dinners for up to 300 guests in the Palm Court Bar is a stand-out offering.

- **Guestrooms & Suites:** 179 thoughtfully designed rooms, including 11 suites with modern comforts.
- **Meeting Spaces:** Six boardrooms and a versatile Weightman Suite for events up to 60 guests.
- **Dining:** 1 AA Rosette for the Seaforth Restaurant and event dining options.
- **Wellness Spa:** Thermae Spa with a pool, sauna, treatments, and state of the art gym.
- **Central Location:** Eight minutes from Lime Street Station, near top attractions.

CONTACT:

Telephone: +44 (0)151 332 3030

Email: hb9e8-ev@accor.com

Instagram: [themunicipalhotelliverpool](https://www.instagram.com/themunicipalhotelliverpool)

Facebook: [themunicipalhotelliverpoolmgallery](https://www.facebook.com/themunicipalhotelliverpoolmgallery)

Address: Dale Street, Liverpool L2 2DH



MALMAISON LIVERPOOL

malmaison.com

Surround yourself with views of the water side at Malmaison Liverpool, a boutique city centre hotel just a short walk from Liverpool Experience Campus. You'll feel right at home in one of our 130 rooms with everything you need to make your stay memorable, from big beds to power showers and stylish décor. The Chez Mal Brasserie & Bar, with its bi-fold doors on to the stunning sun terrace is the perfect spot for summer drinks reception.

- Waterfront location and river views.
- Meeting space for up to 120 with natural daylight and floor to ceiling windows.
- Drinks reception on ground floor & terrace up to 200.
- 130 stylish modern guest rooms including two signature suites.
- Our flexible meeting and event spaces can accommodate everything from intimate meetings to larger-scale conferences and events. Our dedicated events team will be on hand to help you plan and execute the perfect gathering.
- Privately owned multi story car park adjacent to hotel.

CONTACT:

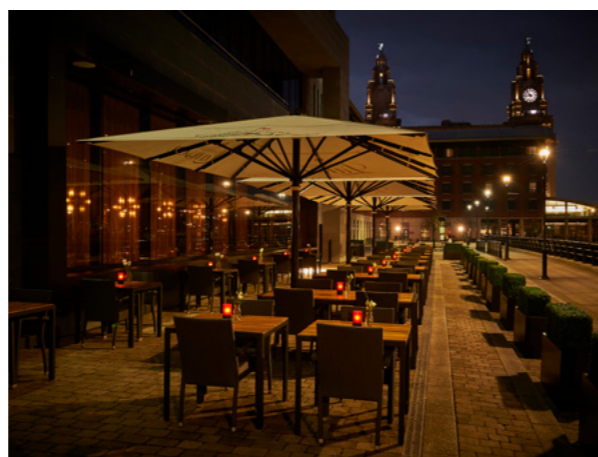
Telephone: +44 (0)151 229 5050

Email: events.liverpool@malmaison.com

Instagram: [malmaisonhotels](https://www.instagram.com/malmaisonhotels)

Facebook: [MalmaisonLiverpool](https://www.facebook.com/MalmaisonLiverpool)

Address: William Jessop Way, Princes Dock, Liverpool



MERSEY FERRIES

merseyferries.co.uk

Our historic vessels are available for exclusive hire from 7.30pm throughout the week including weekends. The vessels have a main deck and upper deck with total capacity of up to 270 guests. Our flexible catering team can prepare a range of options for your guests: from a simple, yet delicious finger buffet, a superb fork buffet or hot food such as their famous Scouse dish. Bars are available on both decks with a good selection of alcoholic and soft drinks to keep your guests refreshed.

The Mersey Ferries team is on hand to help plan and organise your event including themed entertainment options.

A new Mersey Ferry will enter service during 2026. Keep up to date with this exciting project via our website and social channels.

CONTACT:

Telephone: +44 (0) 7980 774 742

Email: boathire@merseyferries.co.uk

X: MerseyFerries

Instagram: [mersey_ferries](https://www.instagram.com/mersey_ferries)

Facebook: [Mersey Ferries](https://www.facebook.com/MerseyFerries)

TikTok: [merseyferries](https://www.tiktok.com/@merseyferries)

Address: Mersey Ferries,
Gerry Marsden Ferry Terminal, Pier Head,
Georges Parade, Liverpool L3 1DP



NOVOTEL LIVERPOOL CITY CENTRE

all.accor.com

Novotel Liverpool Centre is a centrally located 4-star hotel designed for business events, offering flexible meeting spaces, modern accommodation, and dedicated delegate facilities - ideal for conferences, corporate meetings, and professional gatherings in the heart of Liverpool.

What We Offer Event Organisers

- Ten flexible meeting rooms suitable for board meetings, conferences, and breakout sessions.
- 209 modern guestrooms ideal for residential conferences and business stays.
- Dedicated event areas with high-speed Wi-Fi and AV facilities.
- On-site restaurant, bar, and leisure facilities for delegate downtime.
- Central location with excellent transport links and discounted nearby parking.

CONTACT:

Telephone: +44 (0)151 702 5109
Email: marija.damule@accor.com
Instagram: [NovotelLiverpool](https://www.instagram.com/NovotelLiverpool)
RopewalksRestaurant
Address: 40 Hanover Street, Liverpool, L1 4LN



THE RACQUET CLUB HOTEL AND VENUE

racquetclubhotel.co.uk

Centrally located in Liverpool's commercial district, the Racquet Club can cater for all sizes of events.

Small meetings up to larger conferences, canapé parties, sit-down buffets or formal dinners. Our dedicated events team can help you with all aspects of your event.

We have eight bedrooms, each individually decorated in a mixture of traditional and contemporary styles.

CONTACT:

Telephone: +44 (0)151 236 6676
Email: info@racquetclub.org.uk
Instagram: [theracquetclubhotel](https://www.instagram.com/theracquetclubhotel)
Facebook: [racquetclubhotel](https://www.facebook.com/racquetclubhotel)
TikTok: [racquetclub](https://www.tiktok.com/@racquetclub)
Address: 5 Chapel Street, Liverpool L3 9AG



PUNCH TARMY'S LIVERPOOL

punchtarmeys.co.uk

Experience Liverpool's ultimate Irish bar! Punch Tarmey's combines vibrant live music, an unbeatable atmosphere, and versatile event spaces for parties of all sizes. Located in the iconic Baltic Triangle, it's perfect for unforgettable celebrations and nights out.

- **Entertainment:** Multiple stages and professional equipment to suit solo singers, bands, and DJs.
- **Event Spaces:** From intimate gatherings of 10 to grand celebrations of up to 1,500, we've got the perfect space for you.
- **Flexible Catering:** Choose from buffet and canapé options to suit all budgets.
- **Bespoke Drinks Packages:** Ideal for corporate and private bookings, tailored to your needs.
- **Prime Location:** Situated in the iconic Baltic Triangle, Liverpool's cultural hotspot.

CONTACT:

Telephone: +44 (0)151 459 1170
Email: eventsliverpool@mhalg.com
Instagram: [punch_tarmeys_liverpool](https://www.instagram.com/punch_tarmeys_liverpool)
Facebook: [punchtarmeyscains](https://www.facebook.com/punchtarmeyscains)
LinkedIn: [Punch Tarmey's Liverpool](https://www.linkedin.com/company/punch-tarmey-s-liverpool)
Address: 31 Grafton Street, Cains Brewery Village, Liverpool L8 5SD



RADISSON RED LIVERPOOL

radissonhotels.com

Radisson RED Liverpool, housed in a Grade II listed building, offers a striking blend of historic charm and modern design. Conveniently located by Liverpool Lime Street, it's the ideal venue for innovative, business-focused events in a dynamic city setting.

- **Prime Location:** Connected to Liverpool Lime Street for seamless accessibility.
- **Dynamic Event Spaces:** Six versatile rooms with modular layouts, accommodating up to 50 delegates.
- **Cutting-Edge Technology:** High-tech AV, high-speed Wi-Fi, and carbon-neutral events.
- **Unique Atmosphere:** Renaissance-style architecture paired with vibrant modern design.
- **Full-Service Solutions:** On-site accommodation, catering options, and creative spaces for collaboration.
- **Ideal for All Business Events:** Conferences, meetings, product launches, and networking receptions.

CONTACT:

Telephone: +44 (0)161 490 5000
Email: meetings.north@radissonhotels.com
Address: 7 Lime Street, Liverpool L1 1RD



ACCOMMODATION

In Liverpool you are spoilt for choice with a range of amazing accommodation options, such as The Halyard, with its opulent bedrooms and unique dining areas. No matter what type of accommodation you need, we've got just the place for you.

LIVERPOOL
CONVENTION
BUREAU



Having organised both a conference and dinner over three days, support is very much appreciated - especially when it comes without additional cost. Liverpool Convention Bureau helped with identifying and booking the venues, speakers for dinners, and set up the link for the accommodation. When I required more help with an evening haunted walking tour and morning fun run, they signposted me to the right people. The Bureau is both helpful and efficient.

Andrew Brodbelt, British Neuro-Oncology Annual Scientific Conference 2022, Syringomyelia 2025



THE HALYARD
thehalyardliverpool.com

The Halyard Liverpool, Vignette Collection is situated in the historic Ropewalks quarter of Liverpool; in the heart of the city and a perfect location for guests looking for a vibrant hub while visiting Liverpool. The Halyard is within walking distance to Liverpool Experience Campus. The Knowledge Quarter which is home to the University campuses, Spaces at the Spine and the Cathedrals is also just a short walk away.

133 bedrooms with a selection of Queen Deluxe, Queen Deluxe with Sofa Bed, Queen Double Doubles, Accessible Doubles and King Suites. In room amenities include, Air conditioning, Free Wi-Fi, stocked Mini Bar, Dressing Gown & Slippers, Sky Sports, BT Sports, Sky Cinema, Chrome Cast, Temple Spa products. All 7th floor bedrooms and suites have a balcony with views across the city, upgraded Mini Bars and Temple Spa products and GHD straighteners, with our suites having freestanding baths and rain fall shower lounge seating and outside terrace.

The Halyards own destination bar and restaurant Voyagers offers a combination of local and global inspired dishes with small and large plates made for sharing. The seventh-floor fitness studio with Precore gym equipment and Peloton bikes with outside yoga terrace overlooking the Liverpool Skyline catering to guests who prioritize wellness during their travels.

The Halyard Meeting Hub on the ground floor, equipped with state-of-the-art technology and capable of hosting up to ten guests in a boardroom setup, makes it an ideal choice for business travellers or those looking to host small meetings. Providing rituals that keep your stay personal and memorable, with thoughtful touches creating lasting memories you will want to take home with you and tell your friends, family, and colleagues.

CONTACT:

Telephone: +44 (0)151 294 6622
 Email: hello@thehalyardliverpool.com
 Instagram: [thehalyardliverpool](https://www.instagram.com/thehalyardliverpool)
 Address: 23 Duke Street, Liverpool L1 4JR



HOLIDAY INN EXPRESS
LIVERPOOL CENTRAL
hiexpliverpool.com

The Holiday Inn Express Liverpool Central is situated on Duke Street in the historic Ropewalks quarter and within walking distance to the city's main attractions.

In the heart of Liverpool, surrounded by the city's bustling bars and restaurants, within walking distance to the cultural area at the Royal Albert Dock; home to Liverpool Experience Campus.

The Knowledge Quarter with the universities, The Spine and both cathedrals are also located close to the hotel. The newly built Holiday Inn Express Liverpool Central is perfect for business or leisure guests. 125 bedrooms with a selection of Queen Standard, Twin Standard, Accessible Double, Queen Standard with sofa bed.

Amenities include, air conditioning, free Wi-Fi, ergonomic desks, ensuite bathrooms with power showers and soak bathroom products. The meeting room on the top floor hosts up to ten guests with state-of-the-art audio-visual equipment and a large breakout terrace with stunning views over the city skyline.

All guests enjoy an inclusive Express Start Breakfast including cereals, yoghurts, pastries, juices with hot breakfast buffet selection. Our Express Café offers lunch and dinner or a relaxing drink.

CONTACT:

Telephone: +44 (0)151 294 6611
 Email: hello@hiexpliverpool.com
 Instagram: [hiexpliverpool](https://www.instagram.com/hiexpliverpool)
 Facebook: [hiexpliverpool](https://www.facebook.com/hiexpliverpool)
 Address: 25 Duke Street, Liverpool L1 4JR





MALDRON HOTEL LIVERPOOL CITY
maldronhotels.com/liverpool

Located in the heart of Liverpool and a short distance from the Liverpool Experience Campus the hotel is a four minute walk from Liverpool ONE retail paradise and a 15-minute walk from Lime Street train station.

Maldron Hotel Liverpool City is the perfect choice for business and leisure guests to experience the city highlights.

This modern 4-star hotel features:

- 268 stylish and exceptionally comfortable bedrooms over eight floors.
- All come with rainfall showers, Chromecast TVs and bedside sockets with USB & USBC ports.
- Three state-of-the-art meeting rooms with Clevertouch technology, located on the first floor. All the meeting rooms have floor-to-ceiling windows, air-conditioning and WIFI is available throughout the building.
- Grain & Grill Restaurant & Bar with Red Bean Roastery Coffee Dock located on the ground floor.
- 24-hour fitness suite.
- Coach drop off at the hotel and nearby secure car parks with discounted rates.

Designed to a BREEAM Excellent rating, this means the hotel's sustainability certification places it in the top 10% of new non-domestic buildings in the UK for best practise when it comes to its environmental performance.

The hotel is also Green Tourism and Green Meetings accredited (Gold).

CONTACT:

Telephone: +44 (0)151 958 9960
 Email: events.liverpool@maldronhotels.com
 Instagram: [maldronhotelliverpool](https://www.instagram.com/maldronhotelliverpool)
 Address: 2 Park Lane, Liverpool, L1 8AW



VENUE INFORMATION						
Room/Space	Area (m)	Theatre	Board Room	U Shape	Cabaret	Banquet
Albert Suite	83.0 m2	60	30	-	36	56
Salthouse Suite	32.0 m2	20	14	12	12	16
Dukes Suite	59.0 m2	40	24	24	24	32
Albert & Salthouse	115.0 m2	60	-	-	42	72



ROPEWALKS HOTEL
ropewalkshotel.co.uk

Part of the Sefton Collection - a local, independent and eclectic family of accommodation, venues and bars.

Ropewalks Hotel is within walking distance of the city's cultural and heritage sites, including the Royal Albert Dock, Liverpool Experience Campus and The Beatles Museum.

Ropewalks features:

- 127 rooms across five room types, from standard double to penthouse.
- A sizable gym.
- Hotel bar with daily happy hour.
- Exquisite venues and meeting spaces.
- Blue Badge parking spaces available on request.
- Accessible rooms.
- Breakfasts cooked to order.
- Easy, client-focused tailored packages for rooms and events.

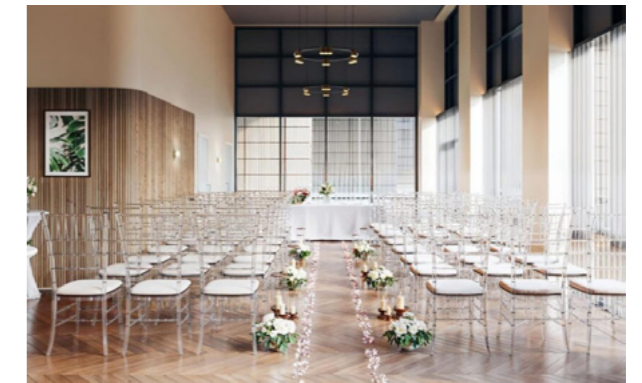
Room 514 - A small and cosy boardroom space for up to 10, particularly convenient for in-house business guests.

The Clubhouse - Brimming with light from three walls of floor-to-ceiling windows. Superb and stylish finishes create an exquisite modern space. It features an elegant bar and two floors, one of which is an open mezzanine. A strong favourite with Liverpool networks and private hire. Capacity and use are wide-ranging, accommodating up to 150 for conferences and dining.

Baby Clubhouse - Known as the little sister to The Clubhouse, Baby is equally elegant and charming. A versatile space for varied set-ups and capacities, accommodating up to 90 for conferences and 100 for standing events.

CONTACT:

Telephone: +44(0)151 374 0004
 Email: events@ropewalkshotel.com
 Instagram: [ropewalkshotel_liverpool](https://www.instagram.com/ropewalkshotel_liverpool)
 Address: 42 Seel Street, Liverpool L1 4BE



ALOFT
aloftliverpool.com

Celebrate your style at Aloft Liverpool, a hotel housed in the iconic Grade II-listed Royal Insurance Building where you'll be surrounded by history and near to Liverpool Experience Campus, The Pier Head and Royal Albert Dock.

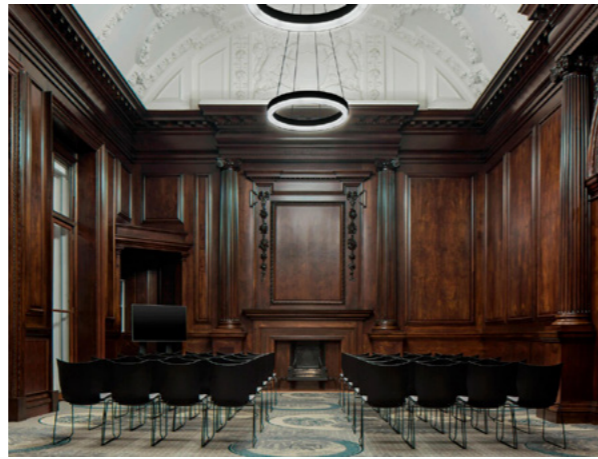
The meeting spaces at Aloft Liverpool are versatile and modern, all with natural daylight and can accommodate groups up to 120 theatre style in our largest suite. Alongside three stylish Tactic meeting rooms on the ground floor holding up to 15 boardroom room.

Our 116 Aloft rooms feature our signature platform-bed, walk-in shower and custom amenities.

Looking for something unique in Liverpool City Centre, why not dine-in in our NYL Restaurant and Bar, recommended in Michelin Guide. Aloft has 2026 Sustainability & Social Impact Goals in place.

CONTACT:

Telephone: +44 (0)151 294 4055
Email: events@aloftliverpool.com
Instagram: aloftliverpool
Facebook: Aloft Liverpool
Address: North John Street, Liverpool L2 5QW



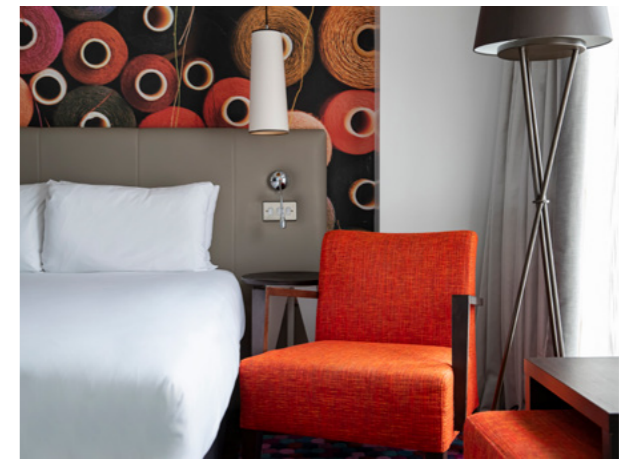
HOTEL INDIGO LIVERPOOL
hotelindigo.com/liverpoolcc

Just steps from Liverpool's historic waterfront, Hotel Indigo Liverpool is perfectly located in the city centre, within close walking distance of Liverpool Experience Campus. Inspired by the area's history and culture, it offers business travellers comfort, style, and a local experience.

- **151 Bedrooms** - stylish 4-star rooms featuring oversized beds and invigorating rainfall showers.
- **Chapel + Barrel** - a bar and restaurant with laid-back vibes, killer cocktails, and comfort food, including pizzas, burgers, bowls, and bar bites.
- **Terrace & Courtyard** - vibrant outdoor spaces, in the heart of the city centre, perfect for drinks and alfresco dining.
- **Hotel Indigo Liverpool** - offering comfort, style, and a distinctly local feel.

CONTACT:

Telephone: +44 (0)151 559 0111
Email: info@hotelindigoliverpool.com
Instagram: hotelindigoliv
Facebook: hotelindigoliverpool
Address: Hotel Indigo, 10 Chapel Street, Liverpool, L3 9AC



HARD DAYS NIGHT HOTEL
millenniumhotels.com

Hard Days Night Hotel is the world's only Beatles-inspired hotel located in the heart of Liverpool city centre, offering individually designed bedrooms, vibrant dining in our brand-new restaurant, and unforgettable stays immersed in the spirit of the world's greatest band, perfect for rock 'n' roll business travel and leisure alike.

- 110 individually designed bedrooms featuring exclusive Beatles artwork.
- Flexible event suites for up to 120 guests with built-in AV and dedicated support.
- Bespoke menus and premium hospitality tailored to your event style and budget.
- Prime city-centre location, steps from the Cavern Club and key business/leisure attractions.
- Unique guest experience inspired by Liverpool's music legacy, making every stay memorable.
- Bespoke group rates, residential packages, and VIP upgrades available.

CONTACT:

Telephone: +44 (0)151 236 1964
Email: events@harddaysnighthotel.com
X: HDNHLiverpool
Instagram: hdnhliverpool
Facebook: HardDaysNightHotel
Address: Central Buildings, North John Street, Liverpool L2 6RR



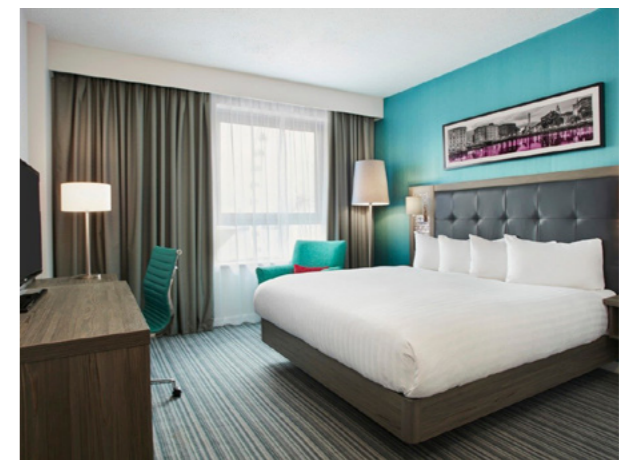
LEONARDO HOTEL LIVERPOOL
leonardohotels.co.uk/hotels/liverpool

Leonardo Hotel Liverpool has 310 bedrooms in total. More spacious than you'd expect, rooms can accommodate three adults or a family of four or just one guest. Situated directly opposite Liverpool Experience Campus and within walking distance of all the city's major historic, creative attractions and shopping centres; it's a great location to base yourself whether you're visiting for work, leisure or just to experience a weekend of shopping in Liverpool.

You'll also find a handful of our rooms are wheelchair friendly, while our ten fully-equipped meeting rooms are ideal for those in the city on business.

CONTACT:

Telephone: +44 (0)151 244 3777
Email: LVI_operations@Leonardohotels.com
Instagram: leonardohotelsukire
Facebook: leonardoHotelsUKIRE
Address: No 31 Keel Wharf, Liverpool L3 4FN



SUPPLIERS

Let Liverpool Convention Bureau put you in touch with our network of experienced and trusted suppliers and professional support services like MSP Global to ensure your event is a success.



Hosting the International Beam Instrumentation Conference in Liverpool was an absolute pleasure, and the support from Liverpool Convention Bureau was invaluable. They helped us secure two truly outstanding venues which provided an unforgettable backdrop for our social programme - participants were hugely impressed. Their support played a key role in making IBIC 2025 the largest-ever conference of its kind in Europe a tremendous success.

Carsten Welsch, Head of Accelerator Science, IBIC 2025

LIVERPOOL
CONVENTION
BUREAU



PHOTO CREDIT: LIZISLESPHOTOGRAPHY.COM COURTESY OF MSP

MSP GLOBAL

msp-av.co.uk

MSP Global is a leading technical production company and event specialist, renowned for creating and delivering exceptional corporate events. We offer a comprehensive suite of services, including AV equipment rental, staging, technical production, media content creation, live streaming, and video production - all tailored to meet your specific needs.

With over 40 years of industry expertise, we have built strong partnerships with local venues and businesses, supported by an enviable track record of delivering cutting-edge, innovative productions. As leaders in the field, we execute major events for top global brands, and our expanding international footprint ensures we can meet your event requirements anywhere in the world. From planning and design to execution and post-event support, we manage every detail to guarantee a seamless and professional experience. Our extensive inventory includes the latest in audiovisual technology, such as high-definition LED videowalls, enabling us to create stunning, immersive experiences. Additionally, our team offers round-the-clock technical and production support, ensuring your projects always run smoothly.

Based in Liverpool, MSP Global's headquarters feature a fully featured broadcast studio, production facilities, private office spaces, workshops, prop storage, meeting rooms, green rooms, a kitchen, and on-site parking. Our versatile facilities include advanced in-house streaming suites, perfect for connecting clients to their audiences via hybrid and virtual events. For added flexibility, we also offer mobile studio setups and satellite broadcast units, enabling live streaming from any location.

Contact us today to discover how MSP Global can elevate your next event, providing innovative solutions to your production challenges and ensuring an unforgettable experience.

CONTACT:

Telephone: +44 (0)344 811 0901

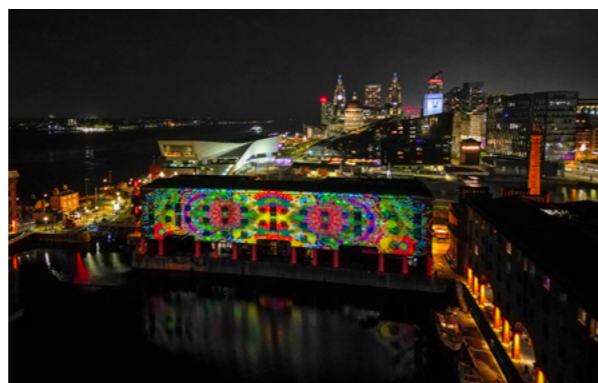
Email: events@msp-av.co.uk

X: [mspglobal](https://twitter.com/mspglobal)

Instagram: [mspglobal](https://www.instagram.com/mspglobal)

Facebook: [mspglobal](https://www.facebook.com/mspglobal)

Address: MSP House, Bridle Way, Liverpool L30 4UA



THE TONI JAMES BAND

tonijames.co.uk

The Toni James Band is a multi award-winning band with over 20 years' experience in the corporate events. Renowned for exceptional musicianship, high-energy performances, professionalism and reliability, the band has built an enviable reputation as one of the most trusted live acts in the North-West.

Starting as a core 4-piece, the lineup can be expanded all the way up to an impressive 14-piece show band, with optional horns, backing vocalists and additional musicians available to create a bespoke line-up designed around your event. You can tailor the size, style and impact of the band to suit your audience - with one outcome consistently delivered: a full dance floor.

The client portfolio includes high-profile performances for Sir Alex Ferguson, Sir Richard Branson, Whitehall receptions, Aston Martin, BMW, LFC, EFC, national award evenings and major sporting events including The Grand National, Chester, Cheltenham and Epsom races. For seven consecutive years, The Toni James Band has headlined the Titanic Hotel Liverpool Christmas Parties, performing to over 4,000 guests.

An acoustic duo or trio is also available for drinks receptions or dining, with repertoire including much-loved music synonymous with the city to create the perfect atmosphere.

"The Toni James Band played at our conference at Liverpool Experience Campus and were fabulous - delegates were dancing from the very first song. The atmosphere was wonderful and Toni was friendly, professional and responsive throughout. We would book again without hesitation."
The British Ecological Society

"The Toni James Band are phenomenal - the musicianship is outstanding and the show is incredibly tight. Having been in the industry a long time, this is the best band I have ever seen."
Brian Connor, General Manager - Titanic Hotel Liverpool



Alongside the band, Toni also curates complete entertainment packages. Whether you require DJ with live sax or percussion, aerial acts, string sections, choirs, immersive walkabout entertainment - or something entirely bespoke - Toni can deliver a fully tailored entertainment experience through one trusted point of contact.

CONTACT:

Telephone: +44 (0)797 180 1563

Email: toni@tonijames.co.uk

Instagram: [thetonijamesband](https://www.instagram.com/thetonijamesband)

CARRINGTONS

carringtons-catering.co.uk

Carringtons Catering is the city's longest standing caterer holding over 40 years experience in high profile events at Liverpool City Halls. We have our very own Master Chef of Great Britain who will create a tailor-made menu to make your event stand out from the crowd.

Specialising in bespoke events from 10 to over 1,000 there is simply no event too big and no event too small. From conference packages and gala dinners to canape cocktail parties and business brunches our team hand prepare locally sourced produce to create dishes fit for every occasion.

As an experienced family run, local and independent business you can be assured your event will be in safe hands. Don't leave it to chance - leave it to Carringtons.

CONTACT:

Telephone: +44 (0)1695 632 252
Email: info@carringtons-catering.co.uk
X: CarringtonsLtd
Facebook: Carringtons Catering Ltd
Instagram: carringtons_catering
Address: All Hallows Kitchen, Roby Mill, Upholland WN8 0QF



INTX

intx.co.uk

Headquartered in Liverpool and backed by over 25 years of expertise, INTX is your trusted partner for bespoke transport solutions, from VIP airport transfers to full-scale events. As a Green Tourism Gold award holder, INTX is committed to providing sustainable travel that minimises environmental impact while delivering excellence in every journey.

- Over 25 years of experience in large conferences and congresses.
- MIA accredited and official partner of Liverpool Experience Campus.
- Green Tourism Gold Award for sustainable transport services.
- VIP airport, hotel and venue transfers with security-cleared drivers.
- Diverse fleet of executive cars, minibuses, coaches and double decker buses.

CONTACT:

Telephone: +44 (0)151 733 9490
Email: transport@intx.co.uk
LinkedIn: /company/intx
Instagram: intxtransport
Facebook: intxtransport
Address: 25 Goodlass Road, Liverpool, L24 9HJ



LIVERTOURS LIVERPOOL

liverpool.livertours.com

Livertours Liverpool is a locally based professional guiding service offering a range of pre-built and bespoke destination tours. So, if you're looking to learn more about the city's music, sport, film or architectural history then look no further as this service uses only the most qualified and knowledgeable guides in the Liverpool City Region, to ensure that its tours are delivered to the highest possible standards.

Choose from a range of themed destination tours or ask for something more bespoke, all itineraries can be tailored to suit the interests and needs of every visitor.

CONTACT:

Telephone: +44 (0)7891 108 160
Email: charlotte@liverpool.livertours.com
X: livertours
Instagram: livertoursliverpool
Facebook: livertoursliverpool



WILD THANG BRANDED CLOTHING MERCHANDISE & PRINT EXPERTS

wildthang.co.uk

Wild Thang provides one world-class solution for creative branded clothing, merchandise, and print, powered by more sustainable practices and ethical production. Established in 1996, now entering our 30th year, we are proud to be one of sectors most certified companies.

Why Trust Wild Thang?

- One of the UK's best world-class state-of-the-art in-house branding production facilities.
- Multi-Award-winning team to help provide creative solutions.
- Clear long-term sustainability pledge to support clients' Net Zero targets.
- Global distribution solutions with offices and warehousing in the UK, Ireland, and the USA.
- Capable of delivering both small batch orders and complex global merchandise tech solutions.
- Proudly B Corp™ certified (2025).

CONTACT:

Telephone: +44 (0)151 933 3289
Email: sales@wildthang.co.uk
Instagram: wildthangltd
LinkedIn: wild-thang-merchandise-experts
TikTok: wildthangltd
Address: 331-337 Derby Road, Bootle, Liverpool L20 8LQ



EXPERIENCE

Make sure your delegates make the most of their downtime. Highlights include a wealth of museums and galleries that are free to enter, vibrant city-wide festivals and stunning street performances. There are also unforgettable experiences, such as taking part in The Big Liverpool Bake.

LIVERPOOL
CONVENTION
BUREAU



The team at Liverpool Convention Bureau helped us find a perfect venue and social networking options which met all the requirements for our small European meeting. They were very responsive and knowledgeable about suitable local venues, and made the whole process very smooth. It was a pleasure to work with them.

Professor Enitan Carol, University of Liverpool organised DIAMONDS: General Assembly 2025



THE BIG LIVERPOOL BAKE
thebigliverpoolbake.com



The city's No.1 baking experience brings to life unforgettable corporate private events, perfect for team bonding, client entertainment and creative networking. A beautifully British and totally immersive, light hearted activity, that brings all walks of life together. Something your guests will never forget, because everyone loves cake... and a bit of competition!

HOW IT WORKS:

With the tent all to yourself, enjoy the ultimate, tailor-made bake off competition! Compete against colleagues in sessions for up to 24 bakers in pairs, or 36 bakers in teams of three. Choose from a fantastic range of bakes or work with us on something totally bespoke to your brand or celebration.

WHAT TO EXPECT:

Past the lovely cocktail bar, you'll step through the fridge (yes that's right!) and into the fully decked-out baking marquee with 12 baking stations, prepared with all the ingredients, instructions and equipment you need. Enhance the day by making the most of our meeting space with full AV set up, delicious food & drinks bundles and extra merch to truly look and feel the part!

- Friendly bake off competition for up to 36.
- Creative, teamwork-based bakes lasting 2 - 3 hours.
- Fully prepared baking marquee.
- A Head Baker guiding you through.
- Private meeting space available.
- Delicious food & drinks available.
- Flexible start and finish times.
- All dietaries covered.
- Special prize awarded for the winning team.

CONTACT:

Email: privatebookings@thebigbakes.com
 TikTok: [thebig_bakes](#)
 Instagram: [thebig_bakes](#)
 Facebook: [thebig_bakes](#)
 Address: 60 Old Hall St, Liverpool L3 9PP





THE ART SCHOOL
theartschoolrestaurant.co.uk

The Art School, led by Chef Patron Paul Askew, is a fine dining restaurant located in Liverpool's historic Victorian 1888 'Home for Destitute Children' building. Its Lantern Room offers world-class menus highlighting the region's seasonal produce, including tasting and prix fixe options paired with an extensive global wine list.

The Art School also features the Tasting Room for intimate dining and wine tastings, The Art School Cellars for public use and private hire and the option to host events in The Moriarty Room. The restaurant accommodates both private and corporate bookings, with rooms available for individual hire or utilising the entire space.

Committed to showcasing Liverpool's culinary scene on national and international stages, Paul and his team maintain the highest gastronomic standards, enhancing the city's reputation for culinary excellence. Catering to a diverse clientele, The Art School provides everything from accessible quality dining to elaborate multi-course tasting menus with wine pairings.

Michelin-recommended since 2014 and boasting two AA rosettes for 12 consecutive years, The Art School has earned consistent acclaim. Highlights include winning the Taste of Britain Award in 2017 and celebrating its 10th anniversary in September 2024. Renowned as one of the UK's top 50 restaurants, it remains a pillar of fine dining in the UK.

CONTACT:

Telephone: +44 (0)151 230 8600
 Email: eat@theartschoolrestaurant.co.uk
 X: ArtSchoolLpool
 Instagram: theartschoolrestaurant
 Facebook: ARTSCHOOLRESTAURANT
 Address: 1 Sugnall Street, Liverpool L7 7EB



BARNACLE RESTAURANT & BAR
barnacleliverpool.co.uk

Barnacle Restaurant & Bar launched in Liverpool in autumn 2025, launched by Harry and Paul Askew from The Art School. Their intimate brasserie set in the city's beautiful Georgian Quarter is found in the Grade II original School For The Blind, instituted in 1791.

Entering Barnacle, the beautifully appointed lobby is flanked by the bar to the left and the restaurant to the right, with seating for casual drinks and snacks in the welcoming area. This theme is carried into the main spaces; for diners there's two-toned walls, maritime artwork and warm lighting, with rope detailing from the ceilings. And in the bar the theme continues in a wonderful social space, with Barnacle's wines, cocktails, spirits and draft beers ready to imbibe. There's also a cosy snug hiding away in the corner and outside, the terrace is perfect to savour a cocktail. The spaces are available for private hire individually or together.

Barnacle's chefs work with Merseyside's finest local artisans, farmers and producers. They tell the story of field to fork which is integral to the restaurant's ethos, reflecting Liverpool's storied history as a port city and the culinary inspirations which have found their way here over time. Working sustainably and curating menus to embody each seasonal change, Barnacle celebrates the produce available in the Liverpool City Region.

CONTACT:

Telephone: +44 (0)151 245 5113
 Email: eat@barnacleliverpool.co.uk
 Instagram: barnacleliverpool
 Facebook: barnacleliverpool
 Address: 24 Hardman Street, Liverpool, L1 9AX





JOHN LEWIS LIVERPOOL: UNIQUE EVENT EXPERIENCES

johnlewis.com/our-shops/liverpool

Elevate your next event with a bespoke retail experience in the heart of Liverpool ONE. We offer exclusive shopping events, premium beauty services and tailored workshops, all delivered with our unrivalled customer service.

- **Premium Beauty & Spa Services:** Treat guests to luxury treatments via our in-store Elemis and Clarins spas, or book expert beauty consultations.
- **Customised Shopping Events:** Host private evening receptions and dedicated personal styling services.
- **Comprehensive Delegate Services:** We offer on-site personal styling, beauty treatments, tech support, and a convenient bureau de change.
- **Expert-Led Masterclasses:** Choose from beauty, home design, or crafting workshops for engaging team building or client entertainment.
- **Flexible Event Space:** Utilise our stylish in-store areas, including the Beauty Hall or Ori Caffè, for unique pop-up events.

Bespoke event pricing available on request, email quoting JLEPG26.

CONTACT:

Telephone: +44 (0)151 452 6274 or +44 (0)151 452 0263

Email: jackie.wild@johnlewis.co.uk

Instagram: [JohnLewis_Liverpool](https://www.instagram.com/JohnLewis_Liverpool)

Address: 70 South John Street, Liverpool, L1 8BJ



SMOKE AND DOUGH

smokeanddough.co.uk/group-dining

Host Your Next Corporate Event or Office Party at Smoke and Dough Liverpool!

Looking to impress your team, clients, or colleagues? Smoke and Dough Liverpool offers bold flavors in a stylish, one-of-a-kind venue at the heart of the city.

Enjoy premium grilled meats, skewered and cooked tableside, alongside a menu designed to please every palate. From unlimited meat grills to bottomless brunches and customisable sharing platters, our wood-fired dishes bring people together.

Our industrial-chic interiors and versatile outdoor spaces create the perfect setting for office parties, corporate lunches, client dinners, and group celebrations of any size. Whether it's a casual gathering or a private event, we provide the space, flavors, and atmosphere to make it extraordinary.

Why choose Smoke and Dough?

- **Interactive Dining:** Sizzling dishes served tableside for an engaging experience.
- **Tailored Menus:** Bottomless options, sharing platters, and custom packages.
- **Stylish Venue:** Industrial-chic interiors with indoor and outdoor seating.
- **Prime Location:** Conveniently situated in the heart of Liverpool.
- **Exceptional Service:** A dedicated team to ensure every detail is flawless.

Celebrate milestones, entertain clients, or toast with your team - Smoke and Dough Liverpool guarantees an unforgettable experience for every occasion.

CONTACT:

Telephone: +44 (0)151 318 6333

Email: hello@smokeanddough.co.uk

X: [Smokeanddough1](https://twitter.com/SmokeandDough1)

Instagram: [Smokendough](https://www.instagram.com/Smokendough)

Facebook: [Smokeanddough](https://www.facebook.com/Smokeanddough)

Address: 14 Paradise St, Liverpool L1 8JF



ARCAINS

arcains.co.uk

ArCains offers one of Europe's biggest gaming experiences in the heart of Liverpool! With hundreds of arcade games across four levels, this exciting venue is perfect for family fun, corporate events, and everything in between.

- **Unlimited Gaming:** Included in all private hire bookings at one fixed price.
- **Gaming Classics:** From retro classics like Mario to rare Japanese imports & rhythm games.
- **Food & Drink:** Buffet, canapé, and bespoke drinks packages available for your event.
- **Private & Corporate Hire:** Hire the whole venue (up to 450 people) or one of our private spaces for your event.
- **Iconic Location:** Located in the vibrant Cains Brewery Village, Liverpool.

CONTACT:

Telephone: +44 (0)151 459 9088
Email: eventsliverpool@mhalg.com
Instagram: [ArCains_Liverpool](#)
Facebook: [ArCainsLPL](#)
LinkedIn: [ArCains Liverpool](#)
Address: 31 Grafton Street, Cains Brewery Village, Liverpool L8 5SD



ALBERT'S SCHLOSS

albertsschloss.co.uk

Albert's Schloss Liverpool is a vibrant Alpine-inspired bar and restaurant on Bold Street, offering indulgent food, freshly baked delights, Bavarian beers and unforgettable entertainment in a lively, immersive setting. The perfect destination for social gatherings, celebrations and unique event experiences.

- Event Organiser offering.
- Immersive Alpine-inspired venue with vibrant atmosphere.
- Group dining menus featuring hearty Cook Haus classics and freshly baked haus bread.
- Extensive beer, wine and cocktail selection.
- Live entertainment and music to elevate your event.
- Central Bold Street location with unforgettable character.

CONTACT:

Telephone: +44 (0)151 312 8998
Email: eventsliverpool@albertsschloss.co.uk
Instagram: [albertsschloss](#)
Address: Radiant House, 18-26 Bold Street, Liverpool, L1 4DS



HOT SHOTS DARTS

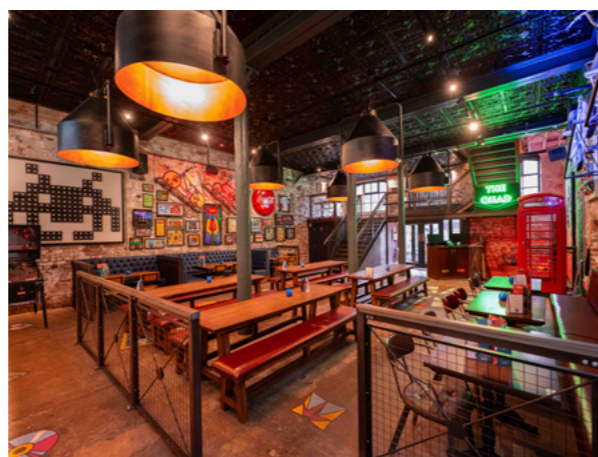
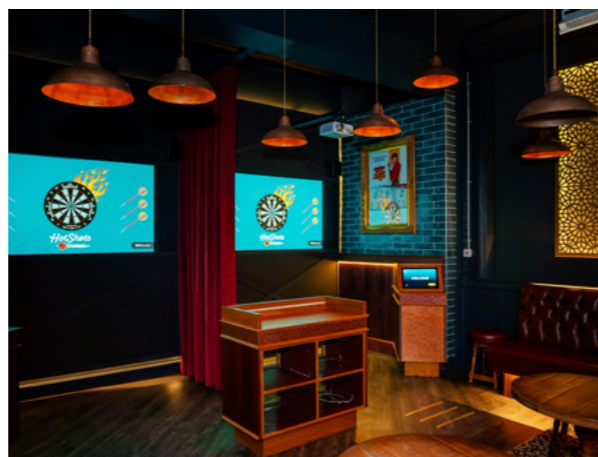
hotshotsdarts.co.uk

Step into Liverpool's largest darts venue! Hot Shots Darts combines retro vibes, cutting-edge AR darts, and unbeatable entertainment. Located in the iconic Cains Brewery, it's the perfect spot for thrilling fun, nostalgic ambiance, and delicious food and drinks.

- **AR Darts Lanes:** Enjoy 10 augmented reality lanes for an immersive gaming experience.
- **More Than Darts:** Private karaoke rooms, shuffleboard, and pinball machines for endless fun.
- **Food & Drink:** Buffet and canapé options, plus bespoke drinks packages for corporate and private bookings.
- **Private Hire:** Various spaces available for parties of 8 to 600, perfect for any event.
- **Iconic Location:** Situated in the historic Cains Brewery building on Stanhope Street.

CONTACT:

Telephone: +44 (0)151 351 7874
Email: info@hotshotsdarts.co.uk
Instagram: [hotshotsdarts](#)
Facebook: [hotshotsliverpool](#)
Address: Stanhope Street, Liverpool L8 5XJ



THE BEATLES STORY MUSEUM

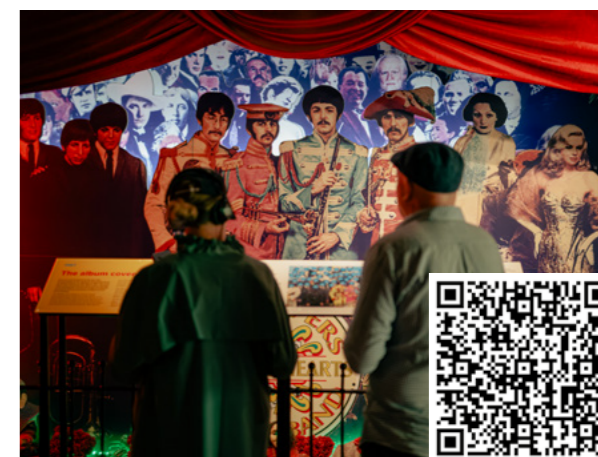
beatlesstory.com

Impress your guests with a private tour of Liverpool's original Beatles museum at The Beatles Story, Royal Albert Dock. We invite you to embark on an incredible and memorable journey through time into the lives and music of The Beatles.

- Enjoy a memorable journey through Liverpool's unique musical heritage.
- Experience Beatlemania within Instagrammable recreations of key locations in the band's career including Hamburg, The Cavern Club, and Abbey Road Studios.
- An expert tour guide will share the stories behind our impressive collection of original memorabilia, from George's first guitar to Lennon's last piano and beyond.
- Enhance your tour with giftbags or a themed afternoon tea for the full Beatles experience!

CONTACT:

Telephone: +44 (0)151 705 6604
Email: events@beatlesstory.com
X: [beatlesstory](#)
Facebook: [BeatlesStoryLiverpool](#)
TikTok: [beatlesstory](#)
Address: The Beatles Story, Britannia Vaults, Royal Albert Dock, Liverpool L3 4AD



THE CAVERN RESTAURANT

thecavernrestaurant.com

The Cavern Restaurant offers high-quality food, attentive service and a flexible two-floor venue ideal for corporate hospitality. Opposite the world-famous Cavern Club, it blends locally sourced dishes, crafted cocktails and bespoke Cavern Gin within décor inspired by the Cavern's iconic music culture.

- Prime Mathew Street location opposite the iconic Cavern Club.
- Two floors: 55 covers (ground) and 80 (first).
- Ambience and décor reflecting the Cavern's music heritage.
- Exclusive hire for meetings, receptions and private dining.
- Locally sourced, fresh ingredients across all menus.
- Cocktails mixed and shaken to perfection.
- Bespoke distilled Cavern Gin for an authentic local touch.

CONTACT:

Telephone: +44(0)151 236 9091

Email: info@thecavernliverpool.com

Instagram: [cavernclubrestaurant](https://www.instagram.com/cavernclubrestaurant)

Facebook: [thecavernrestaurant](https://www.facebook.com/thecavernrestaurant)

Address: 7 Mathew Street, Liverpool L2 6RE



FAZENDA LIVERPOOL

fazenda.co.uk/liverpool

Located in Liverpool's historic Exchange Flags, Fazenda blends Brazilian tradition with modern elegance, offering premium churrasco meats served tableside. Perfect for corporate & private events, it creates unforgettable dining experiences.

Exclusive Restaurant Hire: Fazenda Liverpool accommodates exclusive hire for up to 180 guests, offering an elegant setting for larger gatherings.

Private Dining: The private dining room seats up to 10 guests, while the semi-private area hosts up to 65, blending privacy with signature service.

Event Facilities: Versatile spaces include a semi-private area for up to 70 standing, complete with a private bar and presentation facilities. The heated terrace provides a stylish outdoor setting for wine tastings or summer gatherings.

Churrasco Experience: Rooted in Brazilian gaúcho traditions, Fazenda's tableside service features premium meats, hot sides, and a Market Table.

CONTACT:

Telephone: +44 (0)151 658 1183

Email: remliverpool@fazenda.co.uk

X: [FazendaGroup](https://twitter.com/FazendaGroup)

LinkedIn: [fazenda-rodizio-bar-&-grill](https://www.linkedin.com/company/fazenda-rodizio-bar-&-grill)

Facebook: [fazendaliverpool](https://www.facebook.com/fazendaliverpool)

Address: Horton House, Exchange Flags, Liverpool L2 3YL



HAWKSMOOR

thehawksmoor.com/locations/liverpool

Hawksmoor Liverpool, located in the iconic and beautiful, Grade II-listed India Buildings, is just a stone's throw from Castle Street. Hawksmoor has become one of the UK's best-loved restaurants, renowned for its dry-aged steaks, award-winning cocktails, conscientious approach to sourcing ingredients and industry-leading employment practices.

- **Private Dining:** Hawksmoor Liverpool's private dining room - The New Yorker Room - seats up to 18 people around one large table. A refined setting for elevated gatherings of every kind, from high-profile corporate dinners to life's little wins.
- **Semi-Private Hire & Full Private Hire:** Hawksmoor Liverpool is available for Full Hire for up to 165 guests or for smaller occasions you can go semi-private for up to 80 guests. A dedicated events team ensures each occasion is individually tailored to meet every requirement.
- **Sharing Experience:** Bespoke menus specially designed to showcase a range of classic Hawksmoor dishes. All menus can be paired with matched wines selected by an expert wine team.

CONTACT:

Telephone: +44 (0)151 294 6710

Email: liverpool@thehawksmoor.com

Instagram: [hawksmoorliverpool](https://www.instagram.com/hawksmoorliverpool)

Address: 8 Brunswick St, Liverpool L2 0PL



MASON'S KITCHEN AND BAR

masonsriverpool.co.uk

Part of the Sefton Collection - a local, independent, and eclectic family of accommodation, venues and bars.

"Meet me at Mason's" is a famous call to arms in Liverpool's social scene, and it now brings that same energy to corporate events - offering a vibrant, flexible space designed to elevate team celebrations, presentations, and business gatherings.

What we offer

- Adaptable event space for up to 144 seated guests.
- Central stage and large screens for high-impact presentations.
- Fresh, flavourful catering tailored to your event.
- Built-in AV, music, and entertainment options.
- Perfect for team celebrations, networking, and standout corporate socials.

CONTACT:

Telephone: +44 (0)151 374 0005

Email: hello@masonsriverpool.co.uk

Instagram: [Masonsriverpool](https://www.instagram.com/Masonsriverpool)

Address: 42 Seel Street, Liverpool L1 4AU



PARTNERS AND CITY MAP



LIVERPOOL
CONVENTION
BUREAU

VENUE AND ACCOMMODATION INDEX

VENUE	WEBSITE	THEATRE	BANQUETING	BEDROOMS/ APARTMENTS	PAGE No
Liverpool Experience Campus	accliverpool.com/lex	11,000	1,800	-	30
Exhibition Centre Liverpool	exhibitioncentreliverpool.com	6,000	3,000	-	30
Adagio Aparthotel Liverpool	adagio-city.com	-	-	126	-
Aintree Racecourse	thejockeyclub.co.uk/venues	600	500	-	38
Albert's Schloss	albertsschloss.co.uk/liverpool	-	20-100	-	89
Aloft Liverpool	aloftliverpool.com	100	90	116	72
ArCains	arcains.co.uk	-	250	-	88
The Art School Restaurant	artschoolrestaurant.co.uk	-	32	-	85
Atlantic Tower Hotel Liverpool By Sunday	oyorooms.com/gb/325477	120	150	225	-
Barnacle Restaurant and Bar	barnacleliverpool.co.uk	-	80	-	85
The Beatles Story Museum	beatlesstory.com	180	150	-	40/89
The Big Liverpool Bake	thebigliverpoolbake.com	-	-	-	82
British Music Experience	britishmusicexperience.com	150	100	-	59
The Bluecoat	thebluecoat.org.uk	120	100	-	59
Blackstock Market	blackstockmarket.co.uk	589	1,600	-	48
BOXPARK	boxpark.co.uk	-	1,500	-	-
Cains Brewery	cainsbrewery.co.uk	-	350	-	-
Camp and Furnace	campandfurnace.com	550	-	-	-
The Castle Collection	thecastlecollection.co.uk	-	-	13/34	-
The Cavern Club	cavernclub.com	-	135	-	-
The Cavern Restaurant	thecavernrestaurant.com	-	80	-	90
Citadines City Centre Liverpool	discoverasr.com	-	-	100	-
The Clubhouse	ropewalkshotel.co.uk/weddings-and-events/	100	100	-	71
Content (and Bongo's Bingo)	contentliverpool.co.uk	572	414	-	-
Crowne Plaza City Centre	cpliverpool.com	500	480	159	60
Croxteth Hall	croxteth-hall.co.uk	120	80	-	41

VENUE AND ACCOMMODATION INDEX

VENUE	WEBSITE	THEATRE	BANQUETING	BEDROOMS/ APARTMENTS	PAGE No
The Daffodil	daffodilliverpool.co.uk	-	100	-	-
Delta Hotels by Marriott Liverpool City Centre	marriott.com/en-gb/hotels/lplde-delta-hotels-liverpool-city-centre/overview	240	240	147	60
Dockside Aparthotel Ltd.	staydockside.co.uk	-	-	48	-
Doctor Duncans, The Brewery Tap	doctorduncansliverpool.com brewerytapliverpool.com breweryvillage.com	-	100 80 350	-	-
Eureka! Science + Discovery	discover.eureka.org.uk	-	90	-	61
Fazenda Liverpool	fazenda.co.uk/Liverpool	-	65	-	90
The Florence Institute	theflorrie.org	200	200	-	-
Formby Hall	formbyhallgolfresort.co.uk	-	-	76	-
Gaucha	gauchorestaurants.com	-	200	-	-
Gino's 360 Sky Bar	ginorestaurants.com	-	160	-	-
Gravity MAX	gravity-global.com/max/liverpool	84	52	-	49
Gusto	gustorestaurants.com	-	240	-	-
The Halyard	thehalyardliverpool.com	-	-	85	68
Hampton by Hilton Liverpool City Centre	liverpoolcitycentre.hamptonbyhilton.com	30	-	150	-
Happy Days: Hotel Anfield & Boutique 56	happydays.group hotelanfield.com boutique56.com	-	-	154	-
Hard Days Night Hotel	milleniumhotels.com	120	120	110	72
Hawksmoor	thehawksmoor.com/locations/liverpool	-	165	-	91
Haydock Racecourse	jockeyclubvenues.com	450	500	-	39
Hill Dickinson Stadium	Hilldickinsonstadium.com	490	550	-	44
Hilton Liverpool City Centre	hilton.com	450	300	215	-
Holiday Inn Express Albert Dock	hiexpliverpool.com	40	-	135	-
Holiday Inn Express Liverpool Central	hiexpliverpool.com	-	-	125	69
Holiday Inn Liverpool City Centre	hiliverpool.com	400	230	139	61
Hot Shots Darts	hotshotsdarts.co.uk	-	-	-	88
Hotel Indigo	hotelindigo.com/liverpoolcc	-	-	151	73

VENUE AND ACCOMMODATION INDEX

VENUE	WEBSITE	THEATRE	BANQUETING	BEDROOMS/ APARTMENTS	PAGE No
Hope Street Hotel	hopestreethotel.co.uk	120	110	149	50
Ibis Liverpool Albert Dock	ibis.com	-	-	127	-
INNSiDE By Meliá	innside.com/Liverpool	346	240	207	51
Ibis Styles Liverpool Centre Dale Street Cavern Quarter	all.accor.com	-	-	-	-
The Isla Gladstone Conservatory	theislagladstone.co.uk	300	336	-	-
Knowsley Hall	knowsleyhallvenue.co.uk	150	132	17	52
Leonardo Hotel Liverpool	leonardohotels.com	100	100	310	73
The Liner Hotel	theliner.co.uk	600	230	152	-
Liverpool Cathedral	liverpoolcathedral.org.uk	1,220	1,000	-	53
Liverpool Everyman & Playhouse Theatres	everymanplayhouse.com	405	100	-	-
Liverpool Football Club	liverpoolfc.com/events	600	550	-	54
Liverpool Gin Distillery	liverpoolgindistillery.com	-	-	-	-
Liverpool Hope University	hope.ac.uk/conferences	400	200	-	62
Liverpool Town Hall	liverpooltownhall.co.uk	270	210	-	43
The London Carriageworks	thelondoncarriageworks.co.uk	-	64	-	-
The Lutyens Crypt at the Liverpool Metropolitan Cathedral	liverpoolmetrocathedral.org.uk	750	-	-	-
Maldron Hotel Liverpool	maldronhotels.com	80	72	268	70
Malmaison Liverpool	malmaison.com/Liverpool	120	100	130	62
Masons	masonsliverpool.co.uk	140	150	0	91
Mersey Ferries	merseyferries.co.uk	-	-	-	63
The Municipal Hotel and Spa Liverpool - MGallery	municipalhotelliverpool.com	50	50	179	63
NML Trading Ltd	liverpoolmuseums.org.uk/ venuehire	-	-	-	46
Museum of Liverpool		168	150	-	46
Lady Lever Art Gallery		400	150	-	46
Sudley House		-	50	-	46
Walker Art Gallery		70	80	-	46
World Museum		350	600	-	46

VENUE AND ACCOMMODATION INDEX

VENUE	WEBSITE	THEATRE	BANQUETING	BEDROOMS/ APARTMENTS	PAGE No
Norton Priory	nortonpriory.org	-	-	-	-
Novotel Liverpool Centre	accorhotels.com	100	60	209	64
Novotel Liverpool Paddington Village	accorhotels.com	120	100	221	-
PINS Social Club	pinssocialclub.co.uk	100	100	-	-
Premier Suites Liverpool	premiersuiteseurope.com	-	-	62	-
Pullman Hotel	pullmanliverpool.com	100	80	216	33
Punch Tarmey's	punchtarmeys.co.uk	-	300	-	64
The Racquet Club	racquetclub.org.uk	250	138	8	65
Radisson Blu Liverpool	radissonhotels.com	180	120	194	-
Radisson Red Liverpool	radissonhotels.com	50	50	201	65
The Resident	residenthotels.com	-	-	106	-
Revolución de Cuba Liverpool	revoluciondecuba.com	100	100	-	-
Rodney Street Studios	citystudiosliverpool.co.uk	-	-	12	-
Ropewalks Hotel	ropewalkshotel.co.uk	-	12	127	71
Royal Liver Building 360	liverbuildingtour.com	-	-	-	-
Royal Liver Suite	royalliversuite.com	200	200	-	55
Salt and Tar	saltandtarbootle.com	-	-	-	-
School Lane Hotel	schoollanehotel.co.uk	-	-	55	-
Sefton Park Hotel	seftonparkhotel.co.uk	120	120	16	-
Sefton Park Palm House	palmhouse.org.uk	220	220	-	-
Shakespeare North Playhouse	shakespeare-northplayhouse.co.uk	470	50	-	56
Smoke and Dough	smokeanddough.co.uk	-	150	-	87
Spaces at The Spine	spacesatthespine.co.uk	350	168	-	36
St George's Hall	stgeorghallliverpool.co.uk	800	500	-	42
Strawberry Field	strawberryfieldliverpool.com	100	-	-	-
Staybridge Suites	staybridgesuites.com	-	-	132	-
Staycity Serviced Aparthotels	staycity.com/Liverpool	-	-	212	-
Tate Liverpool + RIBA North	tate.org.uk	100	90-200	-	-

VENUE AND ACCOMMODATION INDEX

VENUE	WEBSITE	THEATRE	BANQUETING	BEDROOMS/ APARTMENTS	PAGE No
Titanic Hotel	titanichotelliverpool.com	600	500	153	57
Rum Warehouse and West Bay	titanichotelliverpool.com	600	500	153	-
Tempest on Tithebarn, Ma Boyles, Nova Scotia	tempestontithebarn.co.uk maboyles.co.uk novascotialiverpool.co.uk	-	-	-	-
University of Liverpool	liverpool.ac.uk/ conferences-and-events	900	300	1,600	-
Western Approaches HQ	liverpoolwarmuseum.co.uk	100	100	-	-
West Tower Country House	westtower.com	-	-	-	-
The World of Glass	theworldofglass.com	-	-	-	58

SUPPLIER INDEX

SUPPLIER	WEBSITE	PAGE No
Abbey Conferences	abbeyconferences.com	27
Avanti West Coast	avantiwestcoast.co.uk	22
Cameron Event Logistics	cameronlogistics.co.uk	-
Carringtons Catering	carringtons-catering.co.uk	78
Cascade Productions	cascadeproductions.co.uk	27
The Cheatles	thecheatles.com	-
Comedy Trust	thecomedytrust.com	-
Computer Cab (Liverpool) Ltd	comcab.co.uk	-
Conference Partners International	conferencepartners.com	27
Experience North, Liverpool Tour Company	experiencenorthdmc.com	-
Fitwise Management	fitwise.co.uk	27
INTX	intx.co.uk	78
John Lewis Liverpool	johnlewis.com/our-shops/liverpool	86
Liverpool ONE	liverpool-one.com	-
Liverpool Tour Experiences	liverpooltourexperiences.co.uk	-
Liverpool Tour Guide Service	paulbeesley.co.uk	-
Livertours Liverpool	livertoursliverpool.com	79
London Northwestern	londonnorthwesternrailway.co.uk	26
MSP Global Ltd	m-sp-av.co.uk	76
Seren Events	serenevents.com	27
Spectra DMC	spectra-dmc.com	-
TFI Lodestar	tfilodestar.com	27
The Toni James Band	tonijames.co.uk	77
Ways to WOW	waystowow.co.uk	-
Wild Thang Branded Clothing Merchandise & Print Experts	wildthang.co.uk	79
Worldspan	worldspanplc.com	27
Virtuopo	virtuopo.com	-

LIVERPOOL CITY CENTRE

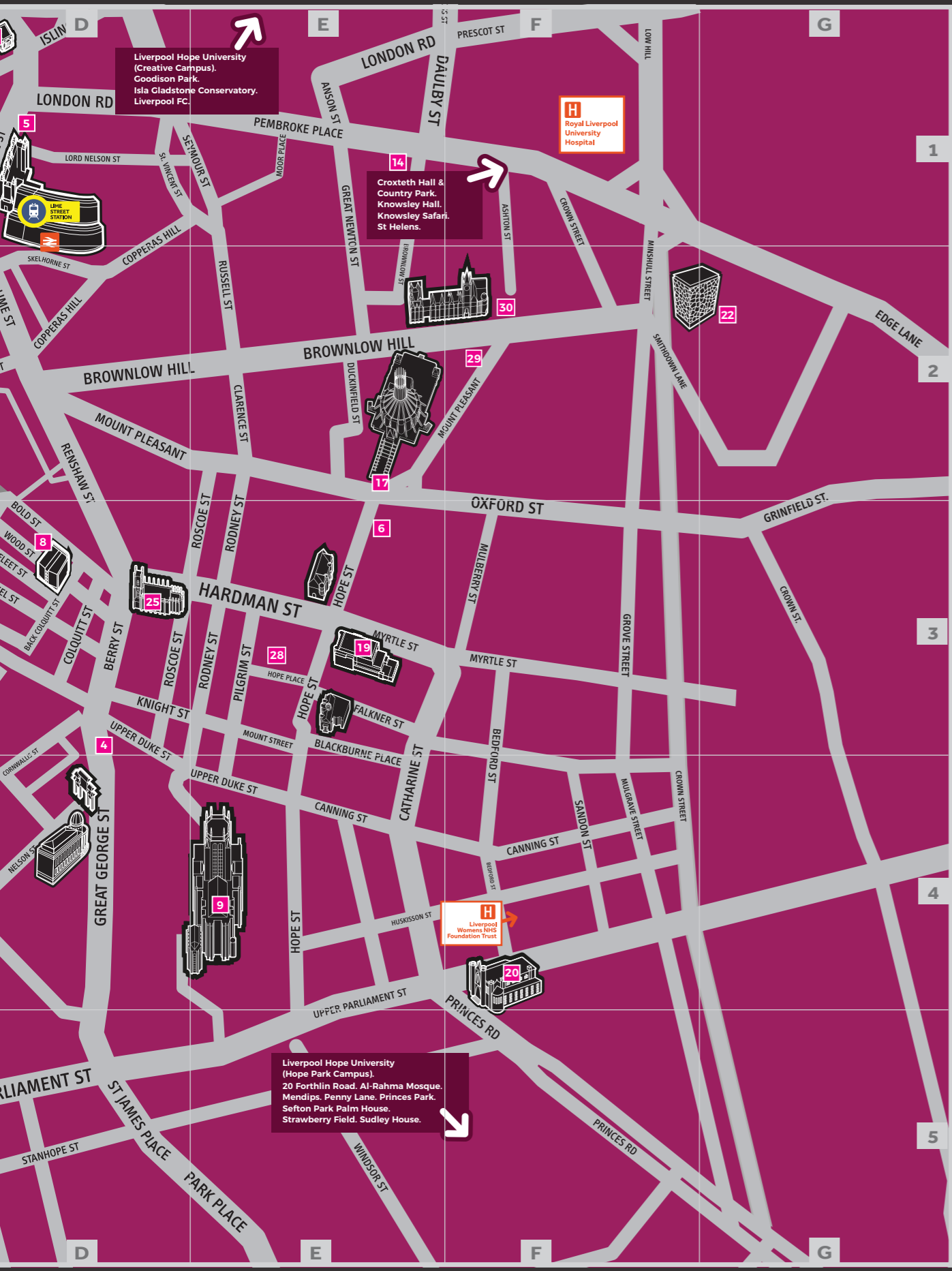
- 1 The Convention Centre at Liverpool Experience Campus
- 2 The Bluecoat
- 3 Central Library
- 4 Chinese Arch
- 5 Empire Theatre
- 6 Everyman Theatre
- 7 The Exhibition Centre at Liverpool Experience Campus
- 8 FACT
- 9 Liverpool Cathedral
- 10 Liverpool Cruise Port
- 11 Liverpool John Moores University (City Campus)
- 12 Liverpool ONE
- 13 Liverpool Parish Church
- 14 Liverpool School of Tropical Medicine
- 15 Liverpool Town Hall
- 16 Mersey Ferries
- 17 Metropolitan Cathedral
- 18 Museum of Liverpool
- 19 Philharmonic Hall
- 20 Princes Road Synagogue
- 21 Royal Albert Dock
- 22 Royal College of Physicians (The Spine)
- 23 Royal Court Theatre
- 24 St George's Hall
- 25 St Luke's Church
- 26 Tate and RIBA North
- 27 The Three Graces
- 28 Unity Theatre
- 29 University of Liverpool (Foundation Building)
- 30 Victoria Gallery and Museum
- 31 Walker Art Gallery
- 32 World Museum

WALKABLE CITY

The great thing about Liverpool is that it is a very walkable city so your delegates can easily explore it on foot. Being such a compact city means that it is easy to find your way around.

Visitors will find it accessible and straightforward to travel whether it is on foot, by bike or public transport; all helping to reduce the carbon footprint of your meetings and events.





LIVERPOOL
CONVENTION
BUREAU

VENUE FINDING SERVICE

Take the stress out of finding that all-important venue, whether it's dinner, a conference or meeting, we have just the place for you.

For more information contact the team
conferences@liverpoolcityregiondp.com

liverpoolconventionbureau.com

@MeetLiverpool

[liverpoolconventionbureau](https://www.linkedin.com/company/liverpoolconventionbureau)

