

LEGEND: W = Winter, Sp = Spring, S = Summer, F = Fall Y = Year round, C = Common, U = Uncommon, R = Rare

Pelicans * Cormorants

- ___ American White Pelican – Sp, S, U
- ___ Double Crested Cormorant- Sp, S, F, U



Hérons * Egrets

- ___ Great Blue Heron – Y, C
- ___ Great Egret – Sp, F, U
- ___ Snowy Egret – Sp, F U
- ___ Black Crowned Night Heron – Sp, S, U



Waterfowl

- ___ Canada Goose – F, W, Sp, C
- ___ Wood Duck – Sp, S, U
- ___ Mallard – Y, C
- ___ Gadwall – Sp, S, U
- ___ American Widgeon – F, W, Sp, U
- ___ Northern Shoveler – F,W,Sp, U
- ___ Cinnamon Teal – W, Sp, S, U
- ___ Blue Winged Teal – Sp, S, U
- ___ Green Winged Teal – W,Sp, S, U
- ___ Ring necked Duck – W,Sp, F, U
- ___ Hooded Merganser – F, W, Sp, U



Vultures

- ___ Turkey Vulture – Sp, S, F, C



Hawks * Eagles * Falcons

- ___ Northern Harrier – F, W, Sp, U
- ___ Sharp shinned Hawk – Y, U
- ___ Cooper's Hawk – Y, C
- ___ Broad winged Hawk, Sp, F, U
- ___ Swainson's Hawk – Sp, S, C
- ___ Red Tailed Hawk – Y, C
- ___ Ferruginous Hawk – W, Sp, U
- ___ Rough Legged Hawk – W, Sp, U
- ___ Bald Eagle – W, Sp, C
- ___ Golden Eagle – W, Sp, U
- ___ Osprey – Sp, S, C
- ___ Merlin – W, U
- ___ American Kestrel – Y, C



- ___ Prairie Falcon – W, Sp, U
- ___ Peregrine Falcon – Y, R



Upland Game Birds

- ___ Wild Turkey -- Y, C
- ___ Ring Necked Pheasant – Y, U



Sandpipers

- ___ Greater Yellowlegs – Sp, S, F, U
- ___ Lesser Yellowlegs – Sp, F, U
- ___ Solitary Sandpiper – Sp, F, U
- ___ Willet – Sp, F, U
- ___ Spotted Sandpiper – Sp, F, U
- ___ Least Sandpiper – Sp, F, U
- ___ Baird's Sandpiper – Sp, F, U
- ___ American Avocet – Y, U



Gulls

- ___ Franklin's Gull – Sp, U
- ___ Ring Billed Gull – Y, C
- ___ Herring Gull – W, Sp, U
- ___ Forsters Tern – Sp, S, U



Doves * Pigeons

- ___ Eurasian Collared Dove – Y, C
- ___ Mourning Dove – Sp, S, F, C
- ___ Rock Dove – [Pigeon], Y, C



Owls

- ___ Barn Owl – Y, C
- ___ Great Horned Owl – Y, C



Hummingbirds * Kingfishers

- ___ Broad Tailed Hummingbird – Sp, S, U
- ___ Belted Kingfisher – Y, C



Woodpeckers

- ___ Downy Woodpecker – Y, C
- ___ Northern, [Red Shafted], Flicker – Y, C



Flycatchers * Pheobes * Kingbirds

- ___ Western Wood Peewee – Sp, S, C
- ___ Dusky Flycatcher – Sp, U
- ___ Least Flycatcher – Sp, U
- ___ Hammond's Flycatcher – Sp, U
- ___ Willow Flycatcher – Sp, U
- ___ Say's Phoebe – Sp, S, F, C
- ___ Eastern Kingbird – Sp, S, C
- ___ Western Kingbird – Sp, S, C



Shrikes

- ___ Northern Shrike – W, U
- ___ Loggerhead Shrike – Sp, U



Vireos

- ___ Warbling Vireo – Sp, S, U
- ___ Plumbeous Vireo – Sp, S, U



Jays

- ___ Bluejay – Y, C



Magpies * Ravens * Crows

- ___ Black Billed Magpie – Y, C
- ___ Common Raven – Y, U
- ___ American Crow – Y, C



Lark, Pipet

- ___ Horned Lark – W, Sp, U
- ___ Water Pipet – S, U

Swallows

- ___ Barn Swallow – Sp, S, C
- ___ Bank Swallow – Sp, S, C
- ___ Violet Green Swallow – Sp, S, U
- ___ Tree Swallow – Sp, S, C
- ___ Cliff Swallow – Sp, U
- ___ Northern Rough Winged Swallow – Sp, S, C



Chickadees * Nuthatches * Creepers

- ___ Black Capped Chickadee – Y, C
- ___ Mountain Chickadee – Sp, F, U
- ___ Red Breasted Nuthatch – Y, U
- ___ White Breasted Nuthatch – Y, U
- ___ Brown Creeper – W, Sp, U



Wrens * Kinglets

- ___ House Wren – Sp, S, C
- ___ Marsh Wren – Sp, S, U
- ___ Ruby Crowned Kinglet – W, U
- ___ Blue Gray Gnatcatcher – Sp, S, U



Robins * Catbirds * Starlings

- ___ American Robin – Sp, S, F, C
- ___ Gray Catbird – Sp, S, U
- ___ European Starling – Y, C



Warblers*Grosbeaks*Buntings*Towhees

- ___ Orange Crowned Warbler – Sp, U
- ___ Yellow Warbler – Sp, S, C
- ___ Yellow-Rumped Warbler – Sp, F, C
- ___ Common Yellowthroat – Sp, S, U
- ___ Yellow Breasted Chat – Sp, S, U
- ___ Western Tanager – Sp, U
- ___ Black Headed Grosbeak – Sp, S, U
- ___ Blue Grosbeak – Sp,S, U
- ___ Indigo Bunting – Sp, S, U
- ___ Spotted Towhee – Sp, S, U



Sparrows * Meadowlarks

- ___ American Tree Sparrow – W, U
- ___ Clay Colored Sparrow – Sp, U
- ___ Chipping Sparrow – Sp, U
- ___ Vesper Sparrow – Sp, S, U
- ___ Brewer's Sparrow – Sp, S, U
- ___ Lark Sparrow – Sp, S, C
- ___ White Crowned Sparrow – W, Sp, U
- ___ White Throated Sparrow – W, Sp, R
- ___ Song Sparrow – Y, C



Blackbirds * Grackles * Orioles

- ___ Western Meadowlark – Sp, S, F, C
- ___ Brown Headed Cowbird – Sp, S, C
- ___ Yellow Headed Blackbird – Sp, S, U
- ___ Red Winged Blackbird – Y, C
- ___ Brewer's Blackbird – Sp, F, U
- ___ Common Grackle – Sp, S, F, C
- ___ Great Tailed Grackle – Sp, S, F, U
- ___ Bullock's Oriole – Sp, S, C
- ___ Baltimore Oriole -- Sp, S, R

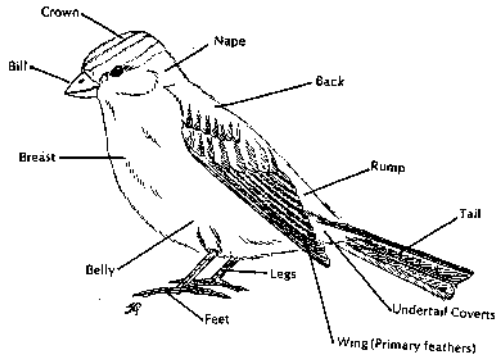


Finches

- ___ House Finch – Y, C
- ___ American Goldfinch – Sp, S, F, C
- ___ House Sparrow – Y, C



When you spot a bird, take note of any coloration in each of the following areas to help identify it.



Location

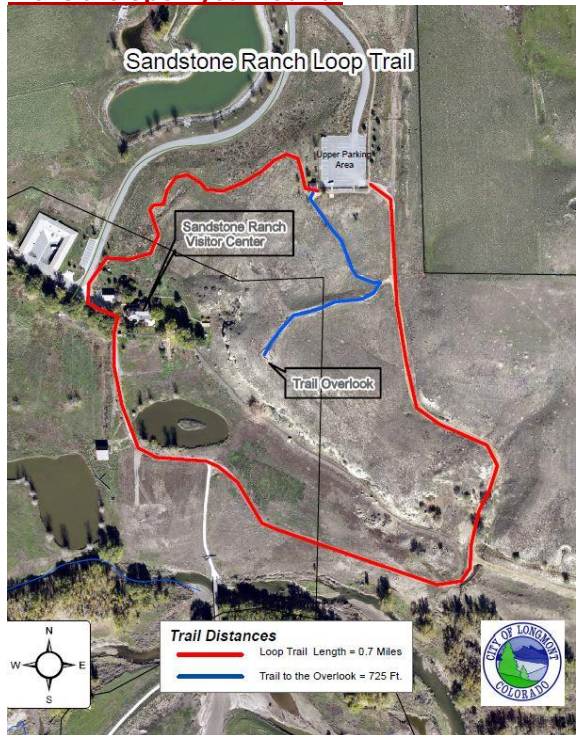
Sandstone Ranch Visitors & Learning Center
3001 Sandstone Drive
Longmont, CO 80504

Directions *(Mobil devices may be wrong, use these directions)

From Longmont or Hwy 287: go east on Ken Pratt Boulevard / Highway 119, past the intersection of Weld County Rd (WCR) 1. Go past the last Walmart stoplight & take the following right hand turn lane onto Sandstone drive. Follow signs to visitors center, at the end of the road.

From I-25: Go west on Highway 119 about 4 miles. Just after the signal light at County Rd 3 1/2, turn left at Sandstone Dr left (south). Follow signs to visitors center, at the end of the road.

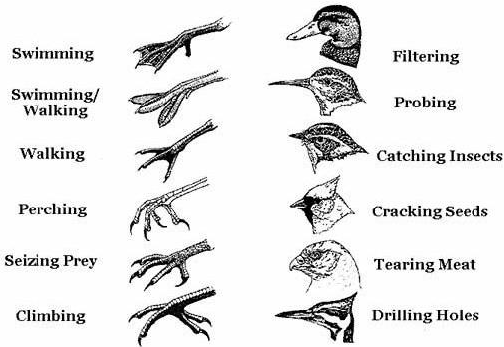
Trails are open year round:



Sandstone Ranch Visitors & Learning Center **Bird Checklist**

Taking note of the shape of a bird will help you identify them, and locate them in a field guide:

Bird Beaks and Feet



+++++
This checklist is based on historical reports and bird surveys conducted here at Sandstone Ranch throughout the years, not an overall list of birds found in our county. You can help update our records by providing the Visitors Center with a copy of your sightings (photos are helpful and always welcome). These records will help confirm previous records and add to the existing list.

Publication date 4/1/2016



Photograph by Robin Boden

Field Observations:

Date/Time _____
Weather _____
Notes _____

Contact information:

For the Center seasonal open hours, questions about the Center, or information about volunteering: (303) 774-4692
Rental information: (303) 774-4694