

February 15th – Tuesday 18th  
 Saturday 15th – Tuesday 18th  
 Super Duper Family Festival  
 Your guide to the

Manchester presents  
**the SUPER DUPER family festival**

Manchester presents  
**the SUPER DUPER family festival**

Your guide to the  
 Super Duper Family Festival

Saturday 15th – Tuesday 18th  
 February 2025

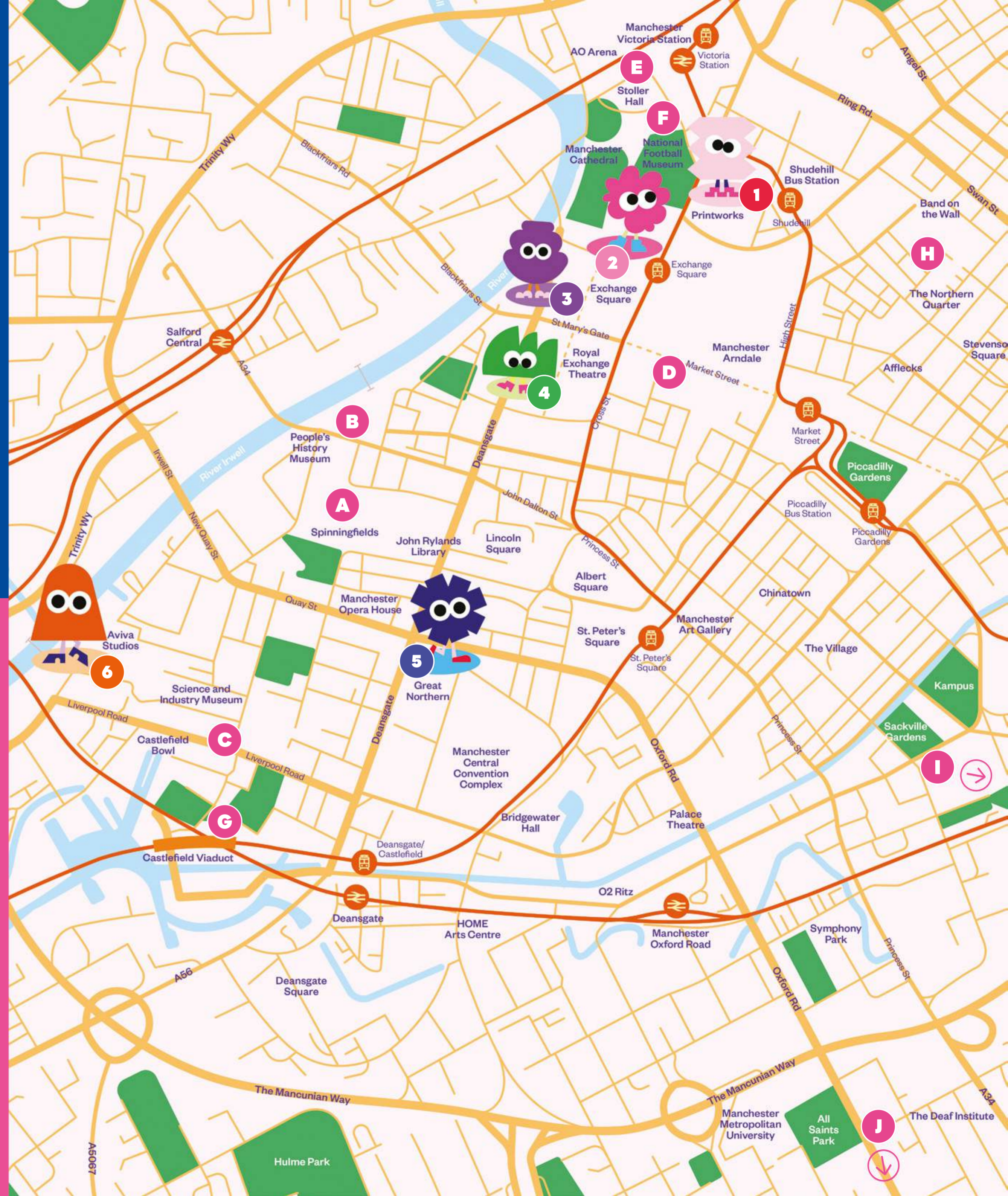
[superduperfamilyfestival.com](http://superduperfamilyfestival.com)  
[@superduperfamilyfestival](https://www.instagram.com/superduperfamilyfestival)

## PLAY

- 1 The Arcade – Printworks, Withy Grove, M4 2BS
- 2 The Garden – Exchange Square and Manchester Arndale, M4 3TR
- 3 The Playground – New Cathedral Street, M1 1AD
- 4 The Carnival – St Ann's Square, M2 7DH
- 5 The Sports Hall – Great Northern, Deansgate, M3 4EN
- 6 The Party – Aviva Studios, home of Factory International, Water Street, M3 4JQ

## DISCOVER

- A Paddington statue at Spinningfields, M3 3EB
- B People's History Museum, M3 3ER
- C Science and Industry Museum, M3 4JP
- D Museum of Illusions, M1 1PW
- E The Stoller Hall, M3 1DA
- F National Football Museum, M4 3BG
- G National Trust, Castlefield Viaduct, M3 4PU
- H Manchester Craft and Design Centre, M4 5JD
- I Mayfield Park, M1 2PY
- J Manchester Museum, M13 9PL





Manchester presents

the

# SUPER DUPER

family festival

Saturday 15th – Tuesday 18th  
February 2025

4 days of half term fun across the city!

Explore the FREE play zones with crafts, activities, games, rides, family raves, performances and more!

PLAY

FREE PLAY ZONES

## 1 THE ARCADE

Step into a retro gaming world at Printworks!

Location: Printworks

Multi-player gaming on the giant screen

Arcade style games

10am – 5pm daily



## 2 THE GARDEN

An oasis in the city

Location: Exchange Square & Manchester Arndale

A giant hedge maze  
Garden workshops  
Garden games  
The Big Green Leaf Eco-School (at the Arndale)  
Roaming performers and more!

Exchange Square:  
10am – 5pm daily  
Manchester Arndale:  
12pm – 5pm daily



## 3 THE PLAYGROUND

with WATERLOO ROAD

Come out to play in the pop-up school playground inspired by BBC's Waterloo Road

Location: New Cathedral Street

Mini school disco  
Crafts & activities  
School-yard games  
Dress-up

10am – 5pm daily



## 4 THE CARNIVAL

The carnival has come to town!

Location: St Ann's Square

Traditional Victorian carousel  
Games & challenges  
Circus skills workshops  
Operation Ouch!  
Brains, Bogies and You: Your Brilliant Brain  
Roaming performers

10am – 5pm daily



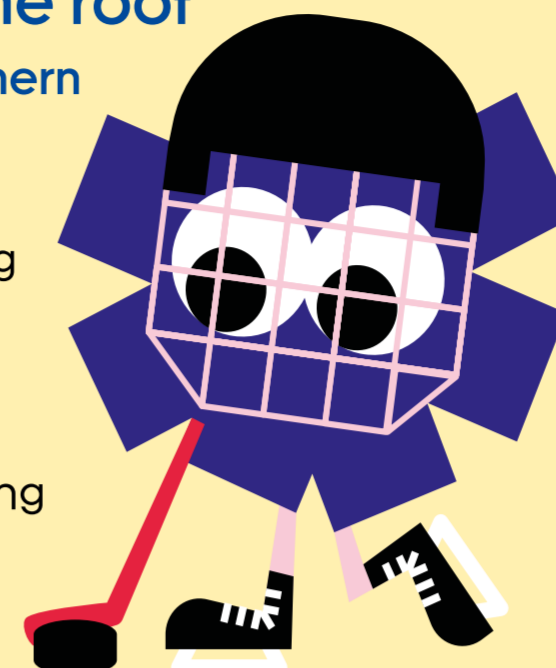
## 5 THE SPORTS HALL

All your favourite sports under one roof

Location: Great Northern

Table football & sub soccer  
Air hockey & curling  
Scalextric and racing simulators  
Table tennis  
Chill out and crafting

10am – 5pm daily



## 6 THE PARTY

Grab your dancing shoes and join the party!

Location: Aviva Studios, home of Factory International

Family rave sessions  
Crafting workshops  
Storytelling sessions  
Chill-out zone

10am – 5pm daily

The Rave sessions are sold out, all other activities are drop in and subject to availability



### Quiet Spaces

Little Northerners at Great Northern

Free play, reading and chill-out area for younger children 10am – 5pm daily.

The Lounge at Royal Exchange Theatre

A family friendly space with toys and colouring activities. Sat 11am – 2:30pm, Sun Closed, Mon 11am – 5pm, Tue 11am – 5pm.

### Toilets and Baby Change

Manchester Arndale

Marks and Spencer, Market Street

Royal Exchange Theatre (Closed Sun)

Aviva Studios

Town Hall Extension

## DISCOVER

Discover all the family fun Manchester has to offer this February half term, with activities at our museums, galleries and outdoor spaces.

Including Operation Ouch! Brains, Bogies and You at Manchester Science and Industry Museum, Sensory Exploring at The Castlefield Viaduct, and snap a selfie with the Paddington statue at Spinningfields, plus much much more...

## STAY

Why not make a night of it, and check out some of the fantastic half term offers available from some of Manchester's most loved hotels.

## SAVE

Snap up some brilliant half term offers from many of Manchester's attractions, retailers and restaurants.

For full event listings and offers please see the website: [www.superduperfamilyfestival.com](http://www.superduperfamilyfestival.com)

## The Super Duper Family Festival

4 days of half term fun across the city!

Explore the FREE play zones with games, rides, dancing, activities, crafts, performances and more to enjoy!

### Opening times

10am – 5pm daily

### QR Code

For more information and full event listings:



Brought to you by



Supported by

