



# **HALLOWEEN IN THE CITY**

## VISITOR INFORMATION







# HALLOWEEN IN THE CITY

Mark the arrival of Halloween with a host of monstrously good events across Manchester city centre.

Featuring a giant rooftop monster invasion, Monsters Rock! Music Festival with spooky DJs, live performances, gruesome games and competitions, plus carnival rides, fancy-dress, Walk the Plank's legendary monster procession and a never-seen before, 8 meter long gigantic wriggling Leech!

Join in! Dress up! Party on!

## DATES

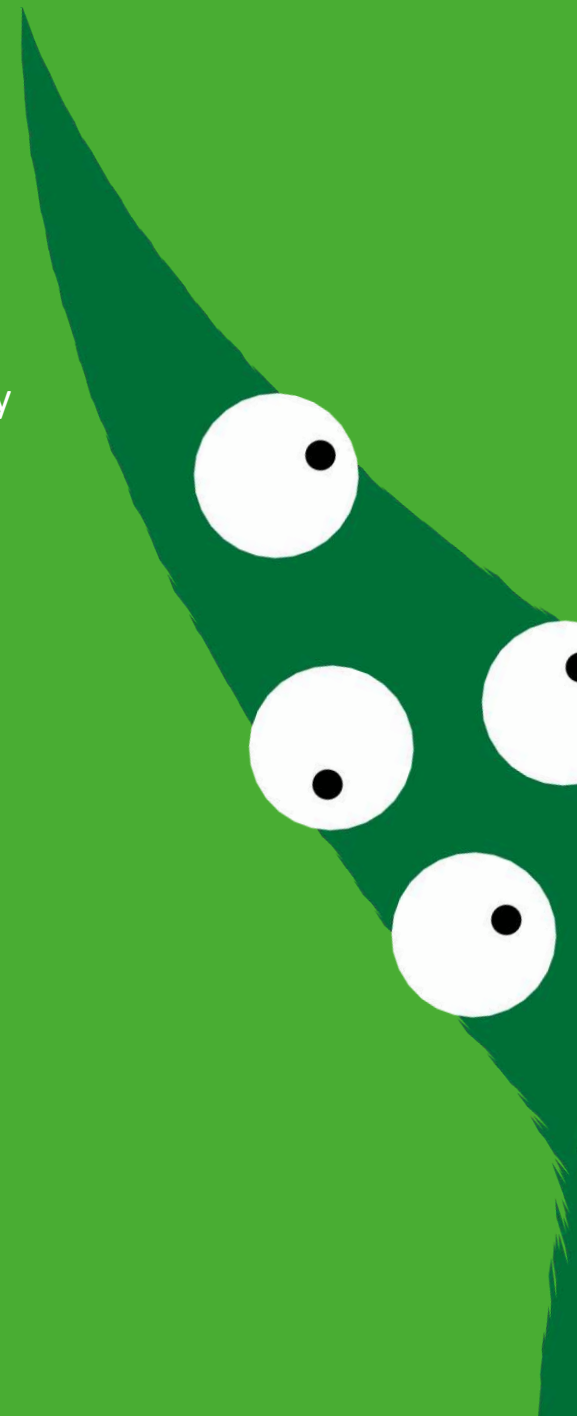
Saturday 26 October, 10am-7pm

Sunday 27 October, 10am-5pm

## LOCATIONS

Manchester Arndale, Exchange Square, New Cathedral Street, Exchange Street and St Ann's Square.

The event is free for all to attend.









# GETTING HERE

Halloween in the City takes place in the heart of Manchester's shopping district.

## **BUS**

Use TFGM's journey planning page to work out your route from anywhere in Greater Manchester.

[www.tfgm.com/public-transport/bus](http://www.tfgm.com/public-transport/bus)

## **CAR**

Car parking is available at many locations across the city, the closest is Manchester Arndale.

[www.manchester.gov.uk](http://www.manchester.gov.uk)

## **METROLINK**

Metrolink operates across Greater Manchester with the nearest stops located at Exchange Square, Market Street and Shudehill.

[www.tfgm.com/public-transport/tram](http://www.tfgm.com/public-transport/tram)

## **TRAIN**

Information on train travel to and from Manchester can be found at:

[www.tfgm.com/public-transport/train](http://www.tfgm.com/public-transport/train)



# MCR MONSTERS

## DATES

Friday 25 – Thursday 31 October

Click below for exact locations:

1. Manchester Arndale, Exchange Square, Above Next, M4 3AJ, [MAP LOCATION](#)
2. Selfridges Exchange Square, Exchange Square, M3 1BD, [MAP LOCATION](#)
3. Exchange Square (26 + 27 only) next to the main stage M3 1BD, [MAP LOCATION](#)
4. Exchange Square (26 + 27 Oct Only), Opposite Selfridges, M3 1BD, [MAP LOCATION](#)
5. Corn Exchange Manchester – Inside (10.30am-11.00pm), Exchange Square, M4 3TR, [MAP LOCATION](#)
6. Harvey Nichols, New Cathedral Street, M1 1AD, [MAP LOCATION](#)
7. New Cathedral Street (26 + 27 Oct only) M1 1AD, [MAP LOCATION](#)
8. New Cathedral Street, (26 + 27 Oct only) M1 1AD [MAP LOCATION](#)
9. The Royal Exchange Manchester, St Ann's Square, M2 7DH [MAP LOCATION](#)
10. National Trust – Castlefield Viaduct (10.30am-5.00pm. Open Wed- Sun), Duke Street, M3 4LQ, [MAP LOCATION](#)
11. AO Arena, Victoria Station Approach, Hunts Bank, M3 1AR, [MAP LOCATION](#)
12. NOMA New Century Hall, Miller Street, M4 4AH, [MAP LOCATION](#)
13. New Vic, Corporation Street, M4 4DZ, [MAP LOCATION](#)
14. KAMPUS, Aytoun Street, M1 3GL, [MAP LOCATION](#)
15. Mayfield, Mayfield Park M12 PY (6am- 7.30pm) [MAP LOCATION](#)
16. Spinningfields, Spinningfields Square, M3 3EH [MAP LOCATION](#)



# MCR MONSTERS

Look up! Look out! Beware! Giant inflatable monsters have taken over the city's streets and rooftops. Can you find them all? Share your pics at @HalloweenMCR #MCRMonsters.



	Hellvis – Manchester Arndale Above Next, Exchange Square, M4 3AJ	<input checked="" type="checkbox"/>
	Harry and Gordon – Selfridges Exchange Square 1 Exchange Square, M5 1ED	<input checked="" type="checkbox"/>
	Coey and Goev – Next to the Main Stage Exchange Square Opposite/ Facing Selfridges, M5 1ED (26-27th Only)	<input checked="" type="checkbox"/>
	Charli XCX – Orolist – Exchange Square Opposite/ Facing Selfridges, M5 1ED (26-27th Only)	<input checked="" type="checkbox"/>
	Terrif-Eyes – Corn Exchange Manchester – Inside Exchange Square, M4 3ER (10:30am-11:00pm Only)	<input checked="" type="checkbox"/>
	Horrible Harvey – Harvey Nichols 21 New Cathedral Street, M1 1AD	<input checked="" type="checkbox"/>
	Boglin – New Cathedral Street Outside Harvey Nichols, M1 1AD (26-27th Only)	<input checked="" type="checkbox"/>
	Ziggy Scar-dust – New Cathedral Street Outside Michael Kors, M1 1AD (26-27th Only)	<input checked="" type="checkbox"/>

	Liam and Noel – The Royal Exchange Manchester St Ann's Square, M2 7DH	<input checked="" type="checkbox"/>
	Emeline Plamburst – National Trust, Castlefield Viaduct Duke Street, M3 4PU (Closed 28th-29th) (Open 30.30am-3pm)	<input checked="" type="checkbox"/>
	Wibbly Wobbly Williams – AO Arena 1 Hunts Bank, M3 1JH	<input checked="" type="checkbox"/>
	Waller Swift – New Century at NOMA Corner of Dantzic Street/Miller Street; Near M4 4AH	<input checked="" type="checkbox"/>
	N.V. (Snvy) – New Vic Corporation Street, M4 4DX	<input checked="" type="checkbox"/>
	Krempus – KAMPUS Aytoun Street, M3 3GL	<input checked="" type="checkbox"/>
	Medlocktopus – Mayfield Park Baring Street, M1 2PT (6am – 7.30pm)	<input checked="" type="checkbox"/>
	Howler – Spinningfields Spinningfields Square, Manchester, M5 3BH	<input checked="" type="checkbox"/>

With thanks to our MCR Monster sponsors









# TEAM TRICK V TEAM TREAT CHALLENGE

Are you Team Trick or Team Treat? Pick a side and win points for you team throughout the weekend.

1. Head to New Cathedral Street (near Zara), pick up a wristband and choose a side – Team Trick or Team Treat
2. Dressed up? Collect 10 bonus points from the Wristband Exchange on New Cathedral Street
3. Take part in ghoulish games to win points for your team

GAME 1 – Monster Portaloos, New Cathedral Street

GAME 2 – Fright Cases, Exchange Square

GAME 3 – Monster Rock Out, Inside Manchester Arndale, near Next.

GAME 4 – Lost and Found, Exchange Street

GAME 5 – Eyeball in a bucket, St Ann's Square









# TEAM TRICK V TEAM TREAT CHALLENGE

4. Hand in your points at the scoreboard on New Cathedral Street (near Zara) and see if your team is winning
5. Head to the Main Stage in Exchange Square at 4.30pm each day to see which team is crowned the winner and collect a prize.
6. Show off your fancy dress outfit at the Main Stage at 4.30pm for the chance to be named the best dressed and win a £100 Manchester Arndale gift card







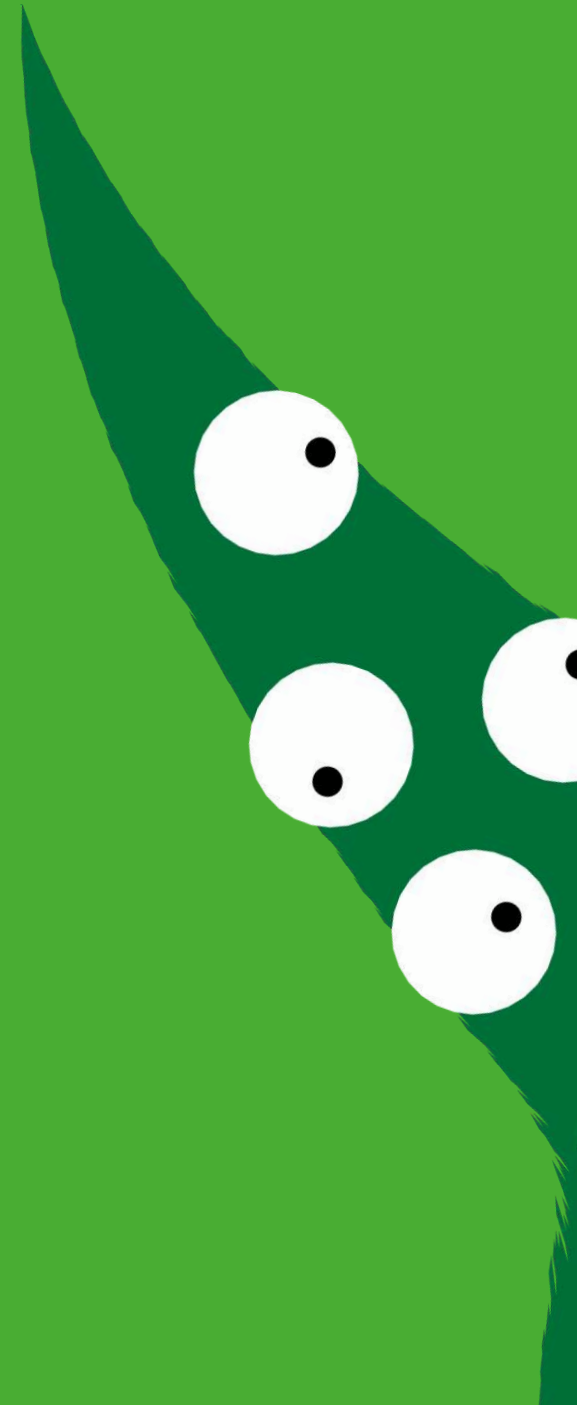
# HALLOWEEN FANCY DRESS

## WHY?

- Come to Halloween in the City in your best fancy dress outfit and join thousands of families taking part
- Receive 10 bonus points at the Wristband Exchange on New Cathedral Street (near Zara) and keep an eye out for spot prizes throughout the weekend
- Head to the Main Stage in Exchange Square at 4.30pm for your chance to be crowned the Best Dressed and win a £100 Manchester Arndale gift card

## HOW?

- Dress up however you like, from a full costume to face paint, a mask, headband or hat
- Costumes can be any theme, from ghosts and witches to superheroes and princesses
- If your family don't enjoy dressing up you can still enjoy all of activities at Halloween in the City







# MONSTERS ROCK! MUSIC FESTIVAL - MAIN STAGE

A stage with monster bands and DJs plus monstrous street food,  
Come here to listen to music, eat and dance.

## Exchange Square

### Saturday 26th October

10am-11.30am: DJs Fat Boy Slime and Grave Haslam

12pm-2pm: Half Baked

2.30pm-4pm: Dr Butler's Handstand Medicine Band

4.30pm- 4.40pm: Team Trick v Treat Scariest Team Winner Announcement

4.40pm-6pm: The David Gibb Big Band

6pm-7pm: DJ Ghostman

### Sunday 27th October

10am-11.30am: DJs Fat Boy Slime and Grave Haslam

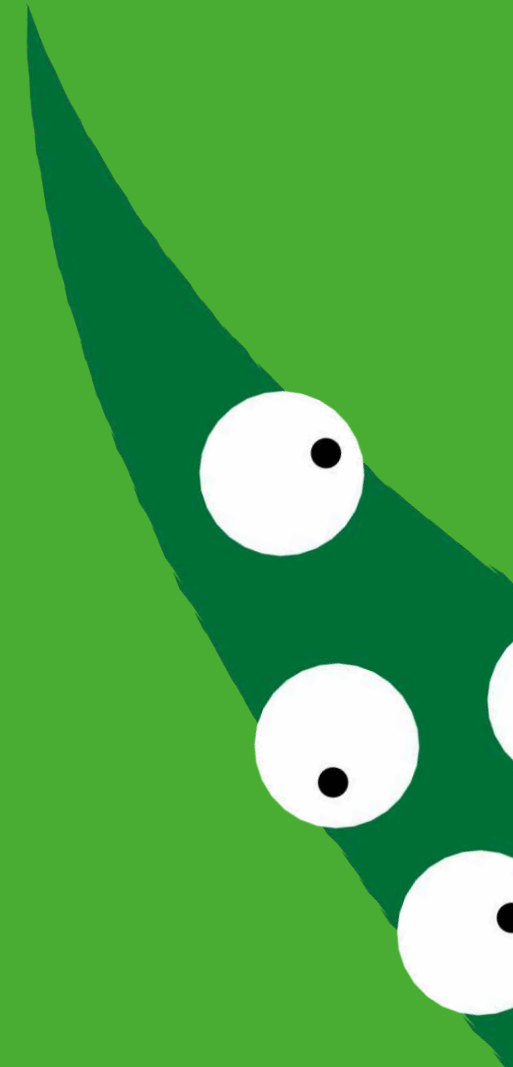
12pm-2pm: Ellis Davies – Duo

2.30pm-4pm: The Thingumajigs

4pm-4.30pm: DJ Ghostman

4.30pm-4.40pm: Team Trick v Treat Scariest Team Winner Announcement

4.40pm- 5pm: DJ Ghostman







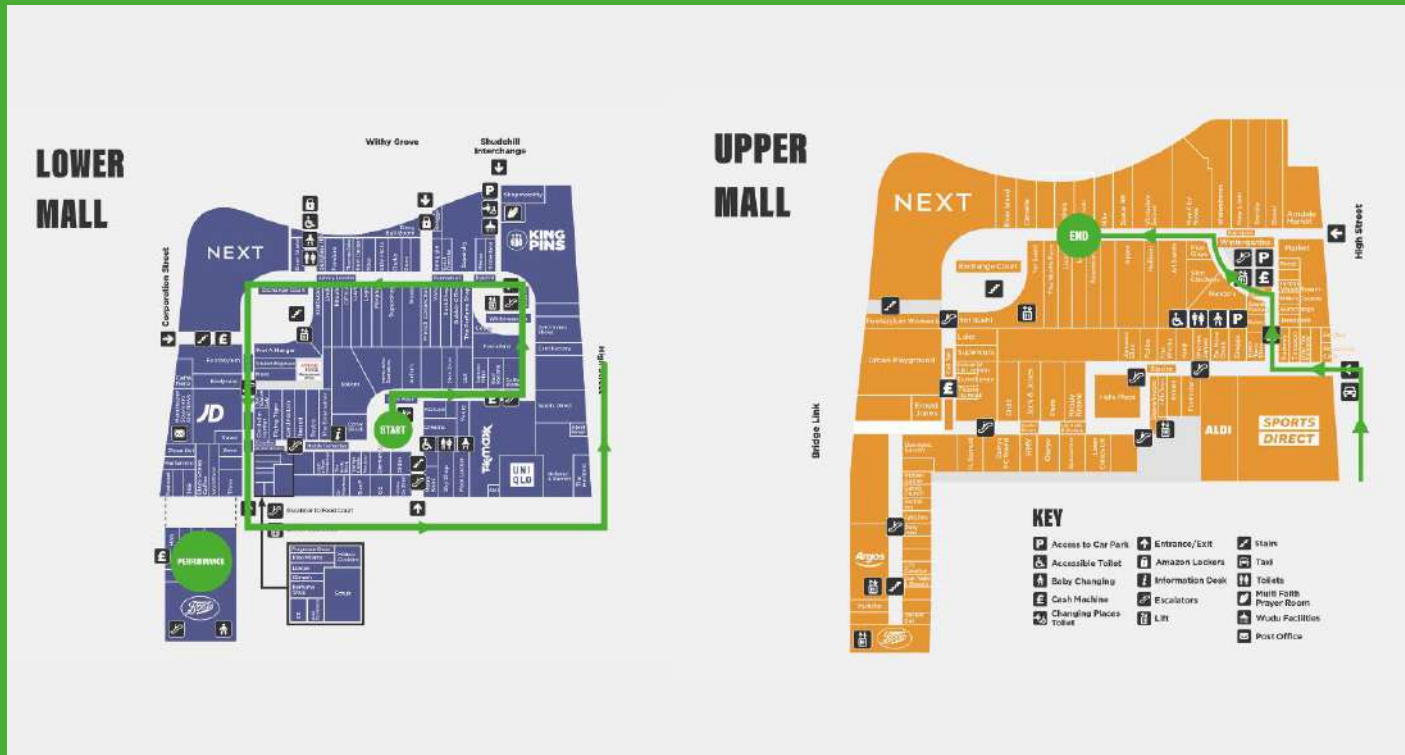


# MONSTER'S ROCK! PARTY PROCESSION

Manchester Arndale and Market Street  
11.30am, 1.30pm & 3.30pm

An unmissable roaming performance from Walk the Plank, expect a crazy procession of monster puppets, stilt walkers and five-piece band.

[CLICK HERE TO DOWNLOAD THE PARADE ROUTE](#)









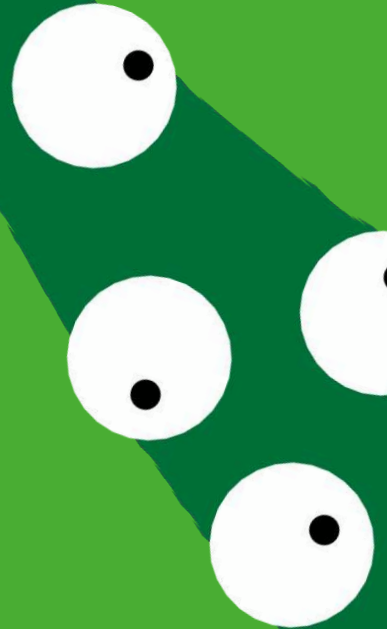
# CARNIVAL OF MONSTERS

St Ann's Square

Run for the hills! A Carnival of Monsters tumbles onto St Ann's Square – a family-friendly freakshow with roaming circus performers, sideshow stalls, hula hooping workshops, a hall of mirrors and the Halloween in the City market.

Saturday 26th October, 10am-7pm

Sunday 27th October, 10am-5pm









# THE RAVE-YARD

## St Anns Square

Hosted by resident evil DJ's The Rave-Yard is the ghosts and ghouls favourite place to party. Come and dance with the dead, play ghoulish games and join us as we eat, sleep, GRAVE, repeat with DJ Ghostman and friends.

Saturday 26th October, 10am-7pm,  
Sunday 27th October, 10am-5pm

# THE LEECH

## St Anns Square

There's a brand-new monster in town and it's ready to join the party. Introducing... the terrifying, the gigantic, wriggling Leech!

Tamed by our ringmaster Grimm Rita and flanked by some spooky skeleton friends, The Leech – stretching eight meters long – is ready to worm its way around the Carnival of Monsters, seeing the sights and entertaining the carnival crowds. Catch it having a boogie on St Anns Square

Saturday 26 & Sunday 27<sup>th</sup> Oct 11:00am, 12:30pm, 2:00pm, 3:30pm









# CITY CENTRE EYEBALL HUNT

You're being watched...

By hundreds of eyeballs, hidden in plain sight across the city

Check doorways, shop windows, hotels and more, - how many of the watching eyes will you find around Manchester?

Keep your eyes peeled.

19-31 October

Share your pics at [@HalloweenMCR](#) [#EyeballHunt](#).







People, pathways, horses, railroad  
trains cut across this rich place, reflecting  
the sounds of the city's industrial past.





# MORE HALLOWEEN EVENTS

There are lots of amazing events happening across the city from Arachobot at Manchester Arndale, Screamworks at the Printworks, Family Films at HOME, and much more!

Look out for our big signs across the city to find out what's on or visit [halloweenmcr.com](http://halloweenmcr.com) and click 'Things to Do Across the City This October'.







# FAQs

## HOW LONG WILL IT TAKE?

You can take as long as you like. 2-3 hours to walk around the whole event and do everything.

## DO WE HAVE TO COMPLETE IN CHALLENGES?

No, you can enjoy the event without being part of the Team Trick v Team Treat Challenge.

## DO I HAVE TO DO EVERYTHING?

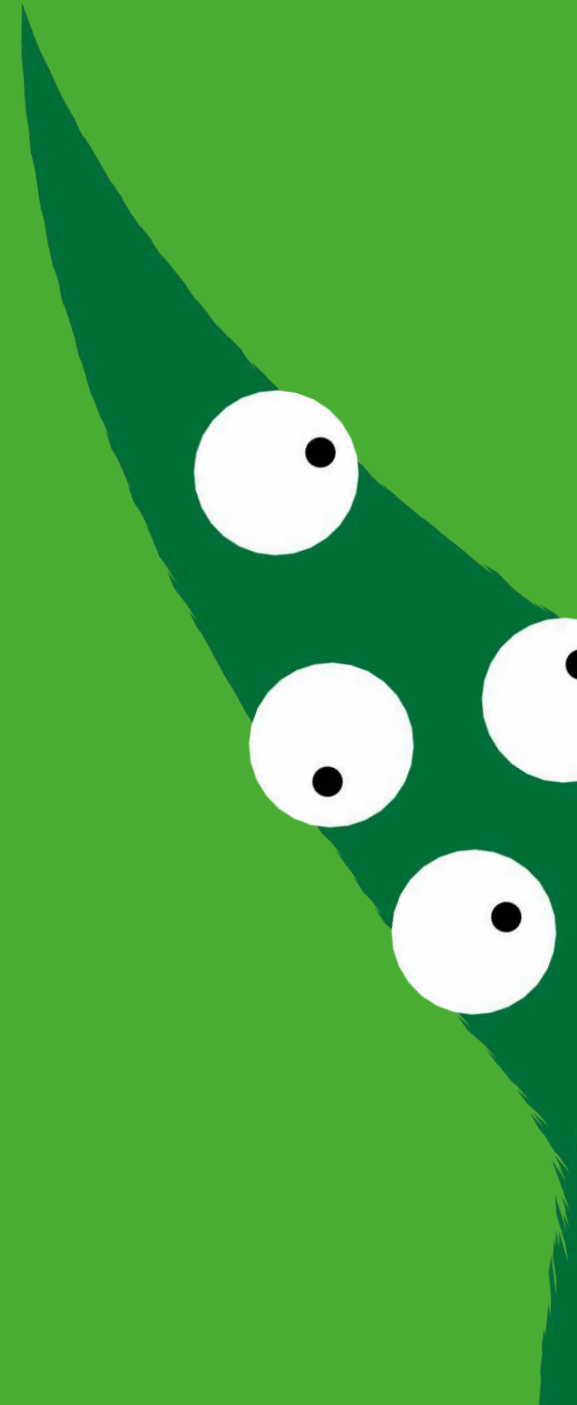
You can do as little or as much as you like.

# TOILETS & BABY CHANGE

McDonalds, St Ann's Square

Manchester Arndale, Lower Ground Floor

M&S, Market Street, Second Floor









# ACCESSIBILITY

All areas at the event are wheelchair accessible.

Accessible toilets can be found in Manchester Arndale and M&S.

[Click here](#) for more information about accessibility around Manchester Arndale and support available.







# CONTACT US

Contact us on Facebook, Instagram and Twitter @HalloweenMCR.

Or

On event days please speak to a member of our staff in orange Halloween in the City t-shirts or our Manchester BID City Hosts, or head to the Information Point on New Cathedral Street between M&S and Zara.

# ONLINE

[www.HalloweenMCR.com](http://www.HalloweenMCR.com)

Find us on social media and share your photos on Facebook, Instagram and Twitter:

@HalloweenMCR #HalloweeMCR #MCRMonsters

