



MEET IN  
*Manhattan* <sup>KS</sup>





# TABLE OF CONTENTS

We're close to everything.....	3	Best Western .....	15
Hilton Garden Inn .....	4	Quality .....	15
Four Points by Sheraton .....	6	Flint Hills Discovery Center .....	16
Holiday Inn at the Campus .....	8	Sunset Zoo .....	18
Bluemont Hotel .....	10	Wareham .....	19
Comfort Suites .....	12	K-State Alumni Center .....	20
Fairfield Inn .....	12	K-State Student Union .....	22
Hampton Inn.....	13	McCain .....	24
Holiday Inn Express & Suites .....	14	Overflow options.....	25
Courtyard by Marriott .....	14	Plan the perfect meeting in Manhattan .....	26
Parkwood Inn & Suites .....	14		
Super 8 Motel .....	15		
Candlewood Suites .....	15		



## WE'RE CLOSE TO **EVERYTHING**



### DRIVING DISTANCES TO MANHATTAN

Topeka, KS	50 minutes
Kansas City, KS	2 hours
Wichita, KS	2 hours
Lincoln, NE	2.5 hours
Omaha, NE	3 hours
Oklahoma City, OK	4 hours, 40 minutes
St. Louis, MO	6 hours
Denver, CO	7 hours



# Hilton Garden Inn & Manhattan Conference Center

410 South 3rd Street  
Manhattan, KS 66502

785-532-9116

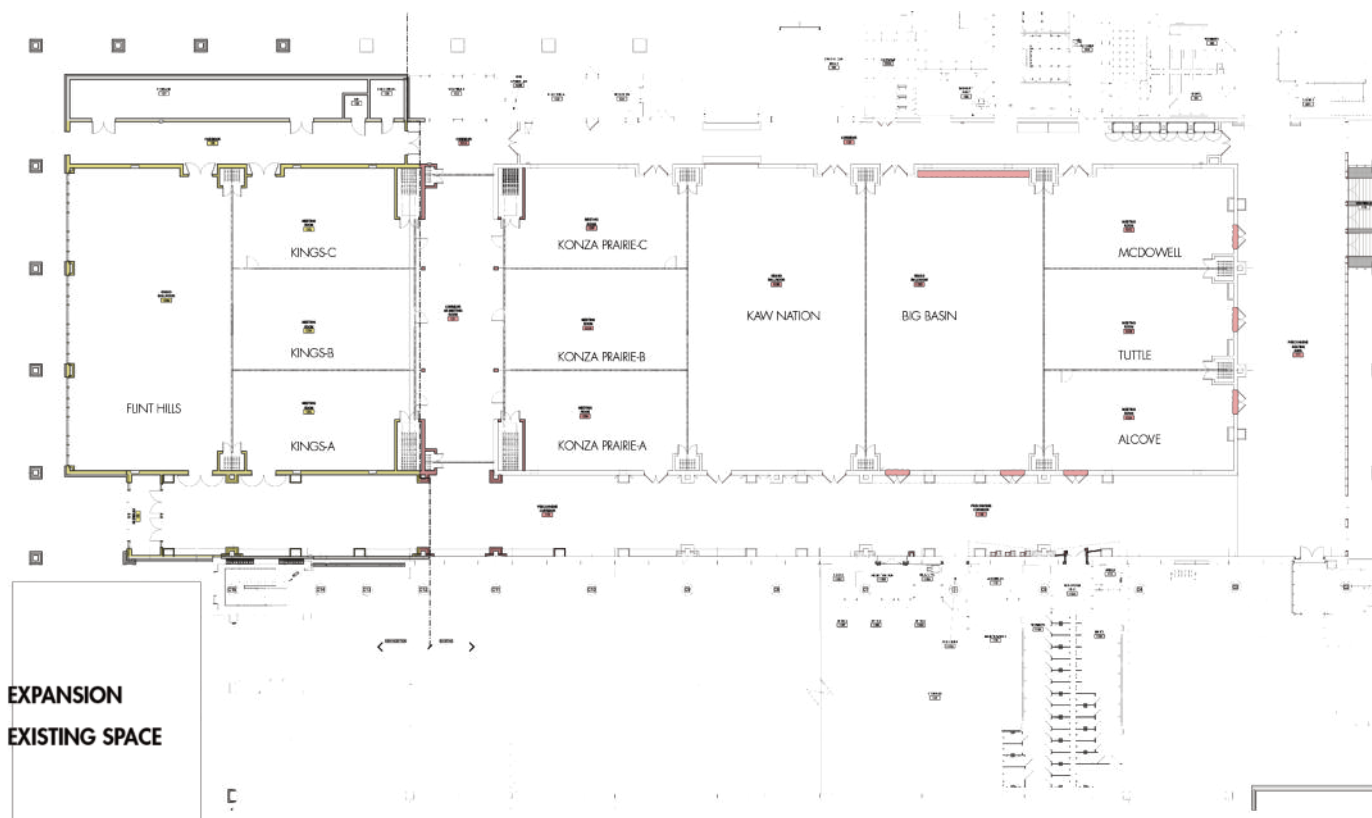
[www.manhattanconferencecenter.com](http://www.manhattanconferencecenter.com)

[www.manhattankh.hgi.com](http://www.manhattankh.hgi.com)



The Hilton Garden Inn and Manhattan Conference Center welcome the opportunity to host your next meeting. Our 32,000 sq.ft. Conference Center provides you the opportunity to design the meeting layout that works best for you. Customize your conference meals and audio visual with our onsite event planning team. Complimentary parking garage attached to the Conference Center along with courtesy Wi-Fi throughout plus a 24-hour business center. Guests can also take advantage of our fitness center, Jacuzzi and indoor pool. Our restaurant serves breakfast, dinner, evening room service and cocktail service. We are steps away from the Flint Hills Discovery Center and downtown Manhattan, ideal for your attendees to enjoy.





Space	Sq.Ft.	Ceiling	Rounds	Theatre	Conference	Reception	Classroom	U-Shape
Little Apple	426	11	-	-	12	-	-	-
Big Blue River & Fort Riley	1,433	11	80	110	36	150	54	42
Big Blue River	716	11	40	50	18	75	24	24
Fort Riley	718	11	40	50	18	75	24	24
Manhattan Grand Ballroom Foyer	9,015	23	-	-	-	-	-	-
Manhattan Grand Ballroom	14,512	23	960	1,290	-	1,525	693	-
Flint Hills	1,216	23	60	100	36	125	48	36
Konza Prairie	1,241	23	60	100	36	130	48	36
Kings	1,266	23	60	100	36	130	48	36
McDowell	1,211	23	60	100	36	125	48	36
Tuttle	1,254	23	60	100	36	130	48	36
Alcove	1,233	23	60	100	36	130	48	36
Kaw Nation	3,558	23	240	272	-	375	156	59
Big Basin	3,558	23	240	272	-	375	156	69

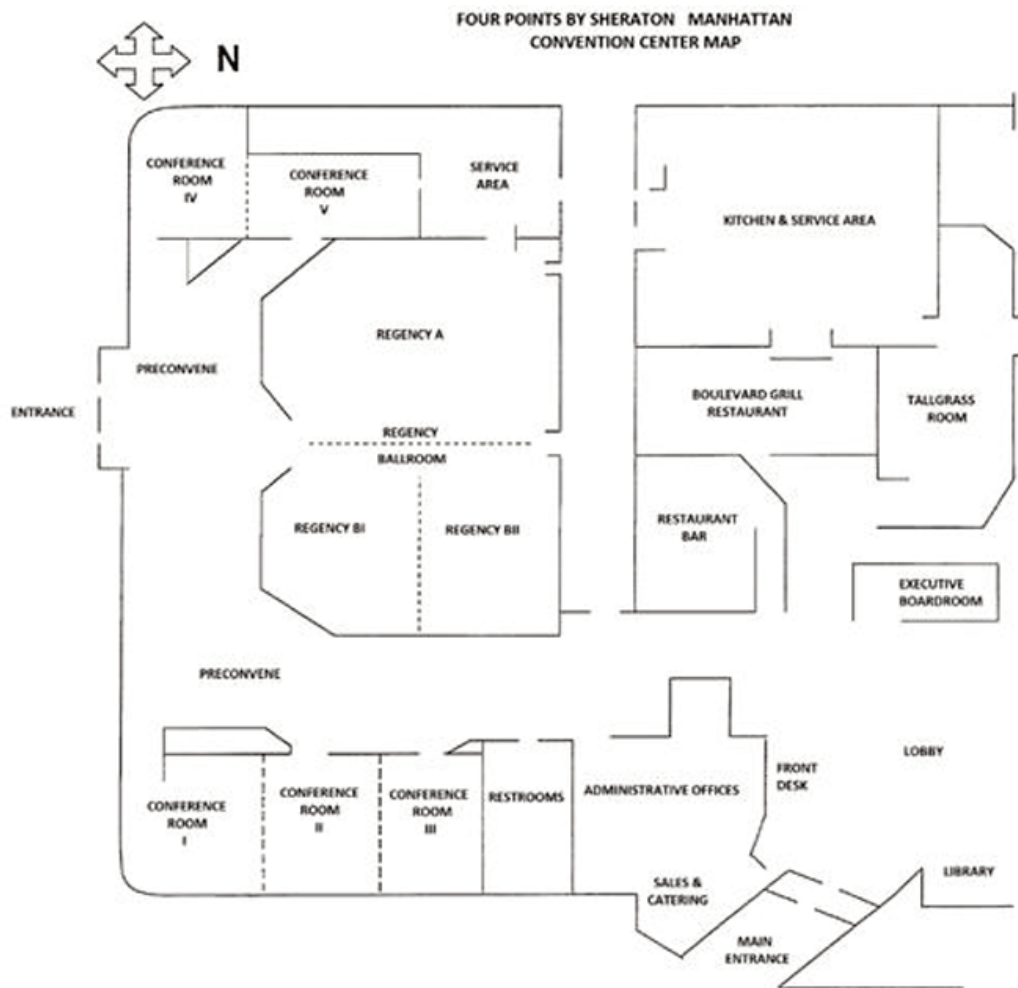
# Four Points by Sheraton

530 Richards Drive  
Manhattan, KS 66502  
785-539-5311  
[www.fourpoints.com/manhattan](http://www.fourpoints.com/manhattan)



Surrounded by the Scenic Flint Hills of KS the Four Points by Sheraton Manhattan is the largest hotel in the city featuring 197 guestrooms and over 20,000 sq.ft. of flexible meeting space. Our professional staff is dedicated to make your stay enjoyable. We accommodate groups of all sizes, offer exclusive group rates, provide in-house catering and AV rental making it a breeze to plan your next event. Enjoy dining at our on-site restaurant which serves fresh favorites for breakfast and dinner as well as great drinks from our local breweries. Stay active at our 24 hour fitness center and relax in our indoor swimming pool and hot tub. We welcome your furry family as well and look forward to making your stay memorable.





Space	Sq.Ft.	Ceiling	Rounds	Theatre	Conference	Reception	Classroom	U-Shape
Regency Ballroom	6,800	12'	550	850	-	700	400	40
*Regency A	3,401	12'	250	300	20	350	180	20
*Regency B	3,401	12'	250	300	20	350	180	20
**Regency BI	1700	12'	80	150	20	100	80	20
**Regency BII	1700	12'	80	150	20	100	80	20
Conference I	660	9'	30	35	20	40	24	12
Conference II, III, each	660	9'	30	40	20	45	28	12
Conference IV	551	9'	30	40	20	35	28	12
Conference V	1160	9'	60	70	30	65	50	15
Conference I & II	1320	9'	60	70	20	80	50	-
Conference IV & V	1711	9'	100	120	30	120	70	30
Executive Boardroom	336	9'	-	-	10	-	-	-



# Holiday Inn at the Campus

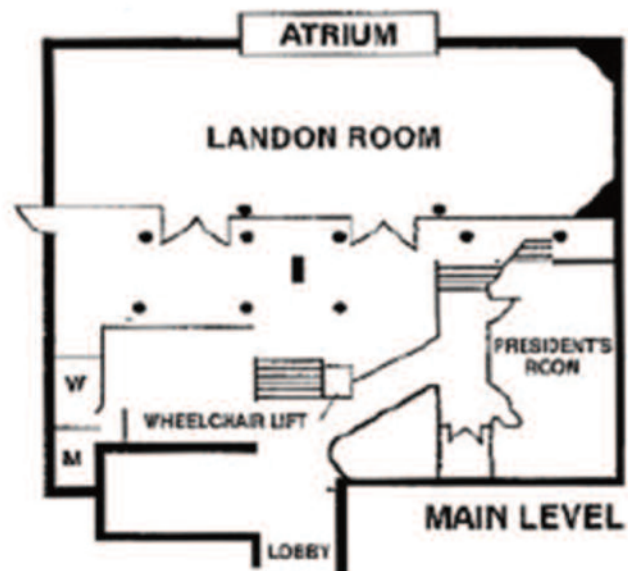
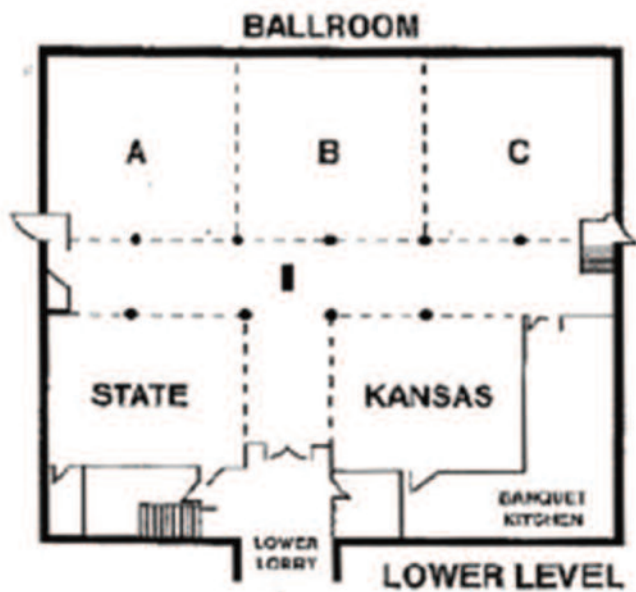
1641 Anderson Avenue  
Manhattan, KS 66502  
785-539-7531  
800-962-0014  
[www.holidayinn.com](http://www.holidayinn.com)



All 113 spacious guest rooms include free wireless high speed internet, 42" flat panel TV's, ample work space, plush triple sheeted pillow top beds, access to outdoor pool and 24-hour fitness and business centers. Whether you are having a 500 person reception or a meeting for 10, we have the space and staff to accommodate you. With seven meeting rooms and over 9,000 sq.ft. of meeting space, our professional sales and banquet teams will customize and execute your memorable event. Enjoy a "made-from-scratch" meal in Houlihan's, our on-site restaurant.







Space	Sq.Ft.	Ceiling	Rounds	Theatre	Conference	Reception	Classroom	U-Shape
Ballroom	5727	10-12'	350	400	-	500	200	-
*Ballroom A	750	12'	60	80	22	100	45	33
*Ballroom B	750	12'	60	80	22	100	45	33
*Ballroom C	750	12'	60	80	22	100	45	33
*State	702	10'	80	80	22	75	45	33
*Kansas	702	10'	80	80	22	75	45	33
Landon	2490	10'	200	275	-	300	200	-
Presidents	1104	10'	56	60	22	50	38	20

# Bluemont Hotel

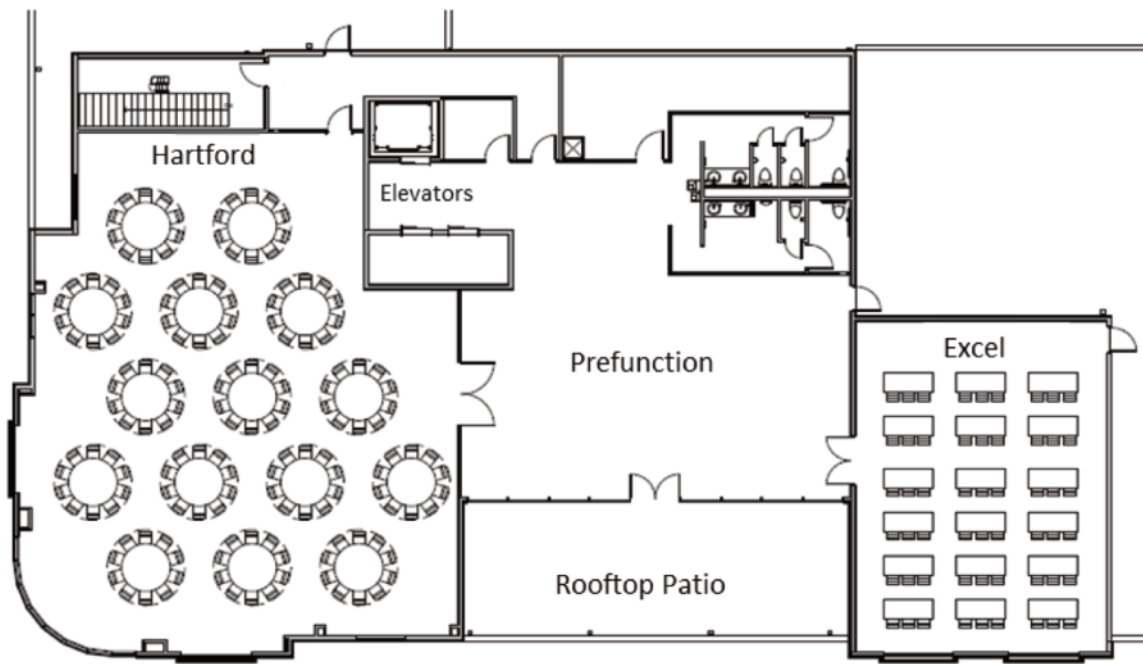
1212 Bluemont  
Manhattan, KS 66502  
785-473-7091  
[www.bluemonthotel.com](http://www.bluemonthotel.com)

**BLUEMONT**  
EST. HOTEL 2014

The Bluemont Hotel offers 112 luxurious guest rooms with over 7,000 square feet of event space, centrally located in the heart of Manhattan. This property features 50 suite-style rooms, free WiFi and complimentary breakfast. The main floor includes a lobby bar, business center, indoor pool and fitness center. All event space is serviced with food through local caterers, and bar service through the hotel staff. At the corner of Bluemont and Manhattan Avenues, guests have easy access to historic Aggieville and Kansas State University.







Space	Sq.Ft.	Ceiling	Rounds	Theatre	Conference	Reception	Classroom	U-Shape
Hartford	3456	200	300	60	300	150	-	
Excel	1344	80	120	40	120	60	30	
Prefunction	1344	-	-	-	120	-	-	
Rooftop Patio	768	-	-	-	-	-	-	
Boardroom	273	-	-	10	-	-	-	

# Comfort Suites

1020 Hostetler Drive

Manhattan, KS 66502

785-539-9449

[www.comfortsuites.com/hotel/ks142](http://www.comfortsuites.com/hotel/ks142)



Whether traveling for business or pleasure, the Comfort Suites hotel provides numerous amenities, inviting accommodations and great service. This all-suite hotel is close to area attractions like Kansas State University, the Flint Hills Discovery Center, and Fort Riley.

Comfort Suites offers a state of the art projection setup in their meeting room. Connection points are available, as well as wireless internet connections.

Meeting Room Specifications	Room Size	Square Feet	Ceiling Height	Reception	Seating Capacity		
					Rounds	Theater	Classroom
Meeting Room					32	21	27

# Fairfield Inn by Marriott

300 Colorado Street

Manhattan, KS 66502

785-539-2400

[www.fairfieldinn.com](http://www.fairfieldinn.com)



Treat yourself to the perfect blend of comfort and convenience at Fairfield Inn Manhattan. Whether for business or leisure, you'll love retreating to relaxation in our spacious guest rooms featuring, mini-refrigerators, microwaves and luxurious bedding. Rooms also feature an ergonomic workspace, free Wi-Fi, and 50" TV with streaming services that include Netflix, Pandora and more. Each morning fuel up on a variety of hearty and healthy favorites from our free hot breakfast, then kick-start your day with a workout in our modern fitness center. Our hotel also features an indoor pool and 24 hour business center. At Fairfield Inn Manhattan, you're our #1 priority.

Meeting Room Specifications	Room Size	Square Feet	Ceiling Height	Reception	Seating Capacity		
					Rounds	Theater	Classroom
Meeting Room		832			42		



# Hampton Inn

501 E. Poyntz Avenue  
 Manhattan, KS 66502  
 785-539-5000, 800-HAMPTON  
[www.hamptoninn1.hilton.com](http://www.hamptoninn1.hilton.com)

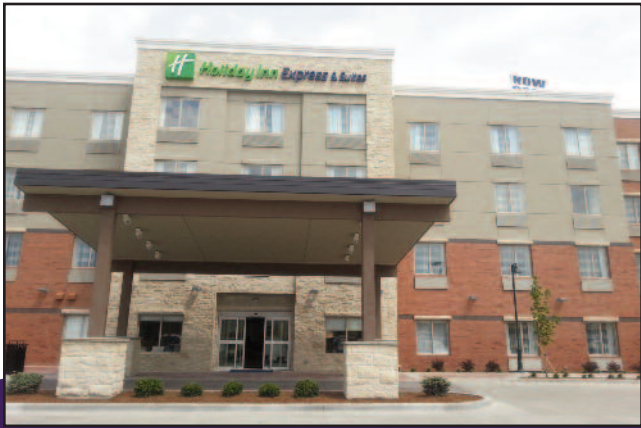


The Hampton Inn by Hilton Manhattan is conveniently located less than one mile from Manhattan Town Center Mall and three miles from Kansas State University. Enjoy more amenities to ensure a comfortable trip. Stay connected in the business center or conduct business in our meeting room. Keep fit with a workout in the fitness center. After an exciting day, retire to a comfy guest room offering complimentary high-speed internet access. Start your day right with Hampton's complimentary hot breakfast. Even if your in a rush, simply grab a Hampton On the Run Breakfast Bag, available Monday through Friday, for a quick, healthy meal to go.

Meeting Room Specifications	Room Size	Square Feet	Ceiling Height	Reception	Seating Capacity		
					Banquet	Theater	Classroom
Meeting Room	38.5' x 17.5'	674	10'	75	54	70	35

# Holiday Inn Express & Suites

115 Blue Earth Place  
 Manhattan, KS 66502  
 800-465-4329  
[www.holidayinnexpress.com](http://www.holidayinnexpress.com)



The newest Holiday Inn addition to Manhattan and the Flint Hills is the Holiday Inn Express and Suites. HI Express offers a small board room with seating for up to 10-12, and access to the business center. The Express and Suites offers 78 guest rooms, indoor pool and workout room. The adjacent Blue Earth Plaza is a great draw for lunches or outdoor exercises. Locally-owned Radina's Bakehouse is right around the corner and offers a healthy menu of selections. Holiday Inn Express is located within walking distance of the Manhattan Conference Center.

Meeting Room Specifications	Room Size	Square Feet	Ceiling Height	Reception	Seating Capacity		
					Banquet	Theater	Classroom
Meeting Room							30

# The Courtyard by Marriott

Bluemont & N. 12th St.  
Manhattan, KS 66502  
785-

Manhattan's newest hotel. Located in the heart of Aggieville, offering 121 guest rooms, each room equipped with a micro/fridge unit. The Courtyard will feature the Bistro restaurant with a full bar, serving breakfast and dinner. The hotel will also have a roof top bar. The hotel will have a meeting room, 1,000 sq. feet, perfect size for groups 40 and under. Our location means guests are right in the middle of town and close to everything – Aggieville, Kansas State University Enjoy our comfortable parking garage.

Meeting Room Specifications	Room Size	Square Feet	Ceiling Height	Reception	Seating Banquet	Capacity Theater	Classroom
Meeting Room	44'x25'	940	10'	40	40	40	25

## Parkwood Inn and Suites

505 South 17th  
Manhattan, KS 66502  
785-320-5440  
[www.parkwoodinnmanhattan.com](http://www.parkwoodinnmanhattan.com)



Parkwood Inn & Suites is a local, independent boutique style hotel featuring 75 guest rooms, all with a Serta Memory Foam mattress, refrigerators, microwaves and Keurig coffee makers. Our Longview Conference Room, featuring state of the art AV equipment is available through our sales department for up to 60 persons. Our complimentary hot breakfast buffet includes continental selections and borders our fireplace for cold mornings and opposite our patio for the enjoyable outdoor days. Please visit our website, TripAdvisor, and our Facebook page for additional information, We look forward to sharing our Midwestern hospitality with you and serving your hotel needs while in Manhattan.

Meeting Room Specifications	Room Size	Square Feet	Ceiling Height	Reception	Seating Banquet	Capacity Theater	Classroom
Meeting Room		940			40	60	



# Super 8 Motel

200 Tuttle Creek Boulevard  
Manhattan, KS 66502  
785-537-8468, 800-800-8000  
[www.super8.com](http://www.super8.com)



The Manhattan Super 8 features 85 clean, comfortable guest rooms at affordable prices. For small meetings and special events, the Blue River Meeting Room is the perfect place to accommodate meetings from 5 to 100 people. Whether visiting for business or pleasure, the Super 8 staff will ensure the success of your event and the comfort of your guests. Other business services include meeting breaks with coffee, tea or water, informal snacks and treats, free local phone calls, fax/copy service and several out-of-house catering options.

Meeting Room Specifications	Room Size	Square Feet	Ceiling Height	Reception	Seating Capacity		
					Rounds	Theater	Classroom
Blue River Meeting Room	49' x 28'	1625	8'	118	100	125	100

## Candlewood Suites Manhattan provides a

115 Blue Earth Plaza  
Manhattan, KS 66502  
785-320-7454  
[candlewoodsuites.com](http://candlewoodsuites.com)

"home away from home" feel at affordable prices. Each guest room is equipped with

a fully stocked kitchen, large workspace with executive style desk, speakerphone and free WiFi.

Living space includes a comfortable recliner. Guests

have access to the 24 hour PreCore fitness center, complimentary laundry facilities and a Candlewood Cupboard which provides breakfast, lunch and dinner options. This property is located just a short walk from downtown and the Manhattan Conference Center, and right next door to the Flint Hills Discovery Center.



# Flint Hills Discovery Center

315 S. 3rd Street  
Manhattan, KS 66502  
785-587-2726  
[www.flinthillsdiscovery.org](http://www.flinthillsdiscovery.org)



Host your next event at the Flint Hills Discovery Center, a unique wedding and event venue offering indoor and outdoor rental spaces nestled in downtown Manhattan, KS. With several hotels within walking distance and free parking, our venue ensures the ultimate convenience for your guests. Enjoy breathtaking views from our rooftop terrace, explore ever-changing exhibits, and experience the grandeur of the glass atrium. No matter your event, we are sure you will find the Flint Hills Discovery Center the ideal venue. Perfect for weddings, receptions, military events, birthdays, anniversary parties, business meetings, retirement receptions, bridal and baby showers, graduation parties and more.



## Full Building

(both floors of exhibits and  
Prairie Garden Terrace)  
240 seated (throughout building)  
500 standing

## Exhibit Space

(first and second floors)  
200 seated (on both floors)  
500 standing

# Flint Hills Discovery Center

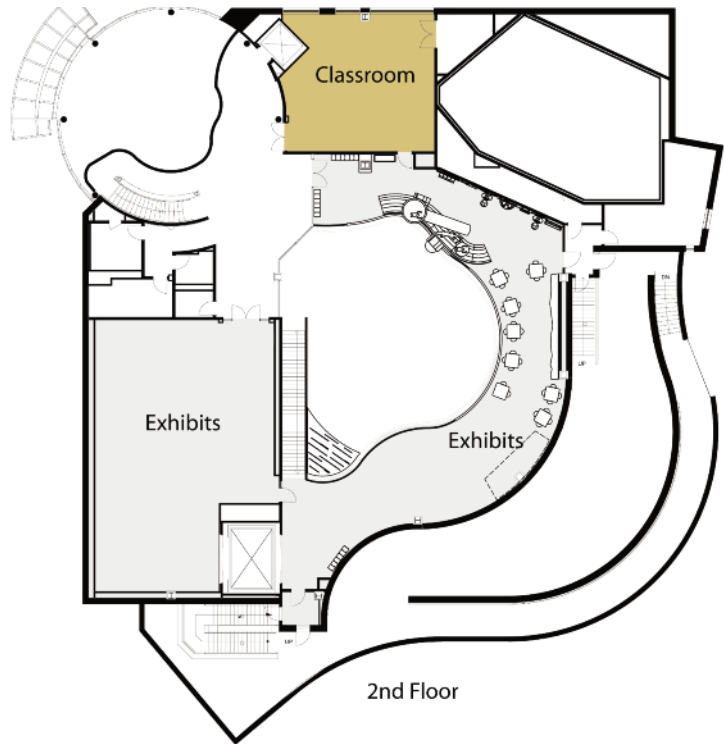
## Classroom

40 classroom

64 seated

75 – 100 standing

(depends upon time of rental)



## Flint Hills Room

(north multipurpose room)

40 seated

45 standing

## Blue Earth Room

(south multipurpose room)

48 seated

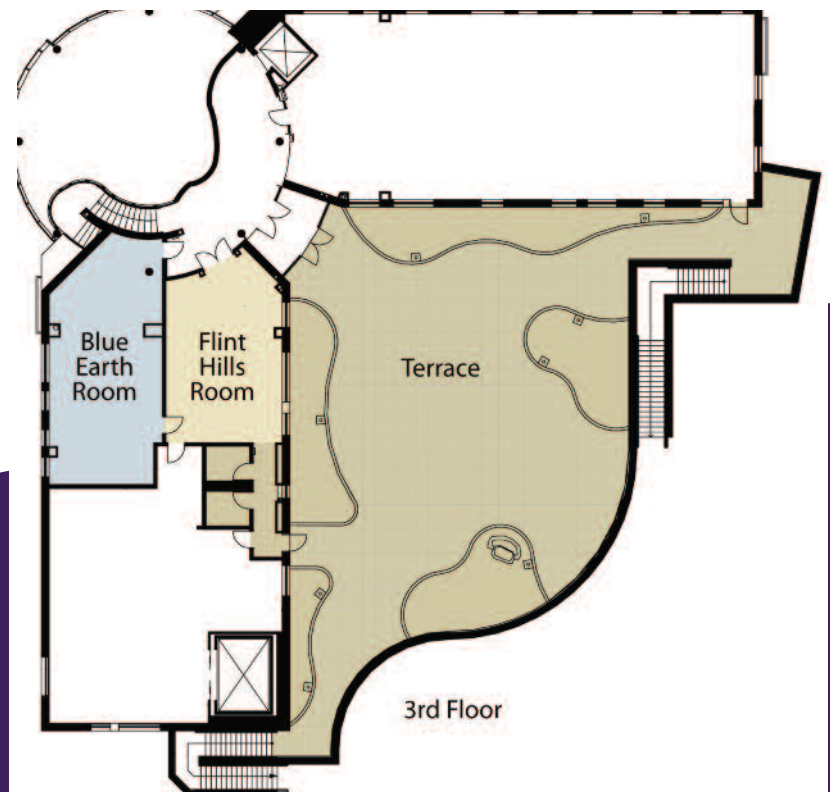
55 standing

## Prairie Garden Terrace & Trail

(new name for rooftop terrace space)

150 seated

200 standing





# Sunset Zoo Nature Exploration Center

2333 Oak Street

785-587-2737

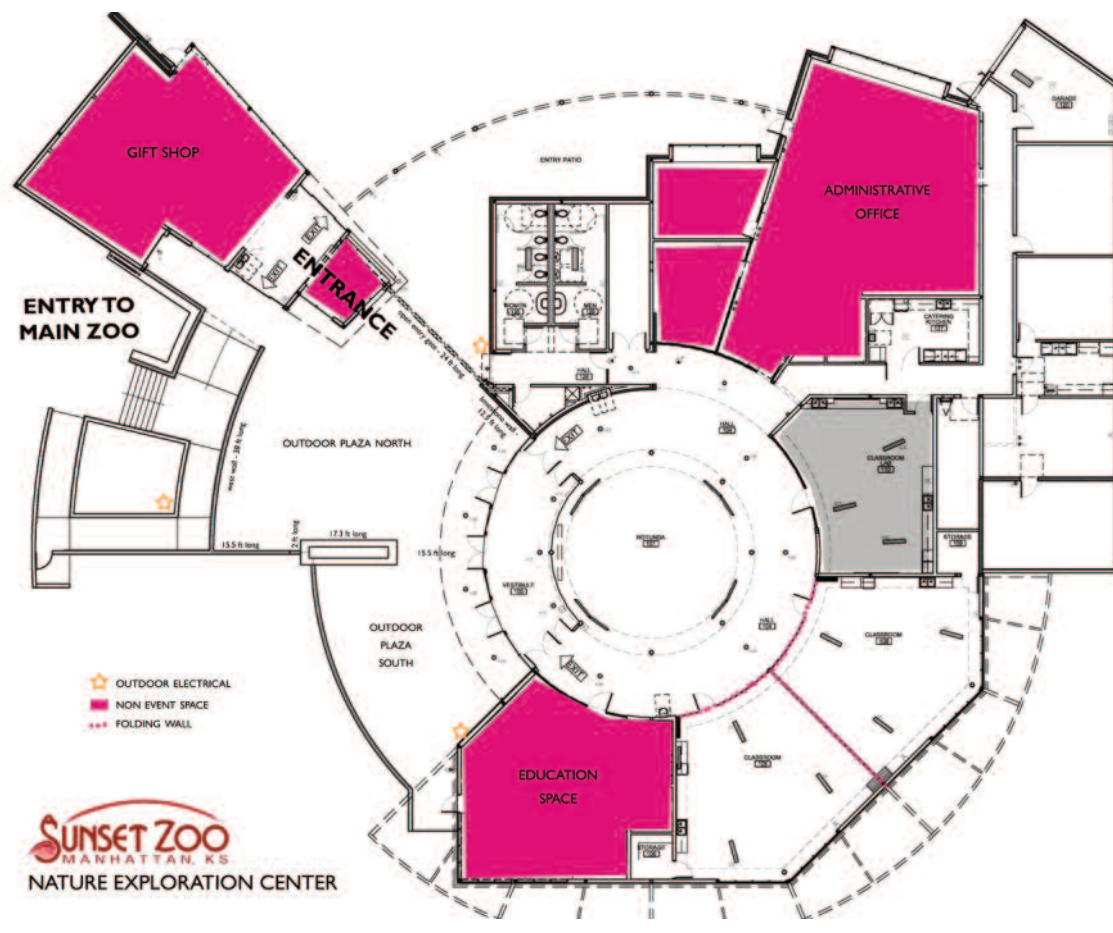
[www.sunsetzoo.com](http://www.sunsetzoo.com)

Manhattan's wildest destination is more than just a park. Sunset Zoo is brimming with creative educational offerings from early childhood programs to youth summer camps, and is the perfect place to host your next celebration or business meeting. The Zoo's Nature Exploration Center and brilliantly-landscaped grounds guarantee a unique celebration.



Home to over 250 animals – from anteater to zebu – Sunset Zoo offers up-close views of flamingos, sloth bears and an array of primates. A visit to Sunset Zoo's gibbon exhibit is sure to wow!

Situated on 26-acres and only a few minutes from K-State, this AZA-accredited Zoo hosts a variety of special events including family favorites like Earth Day, Water Safari and SPOOKtacular, as well as after-hours celebrations such as Wine in the Wild and Brew at the Zoo.



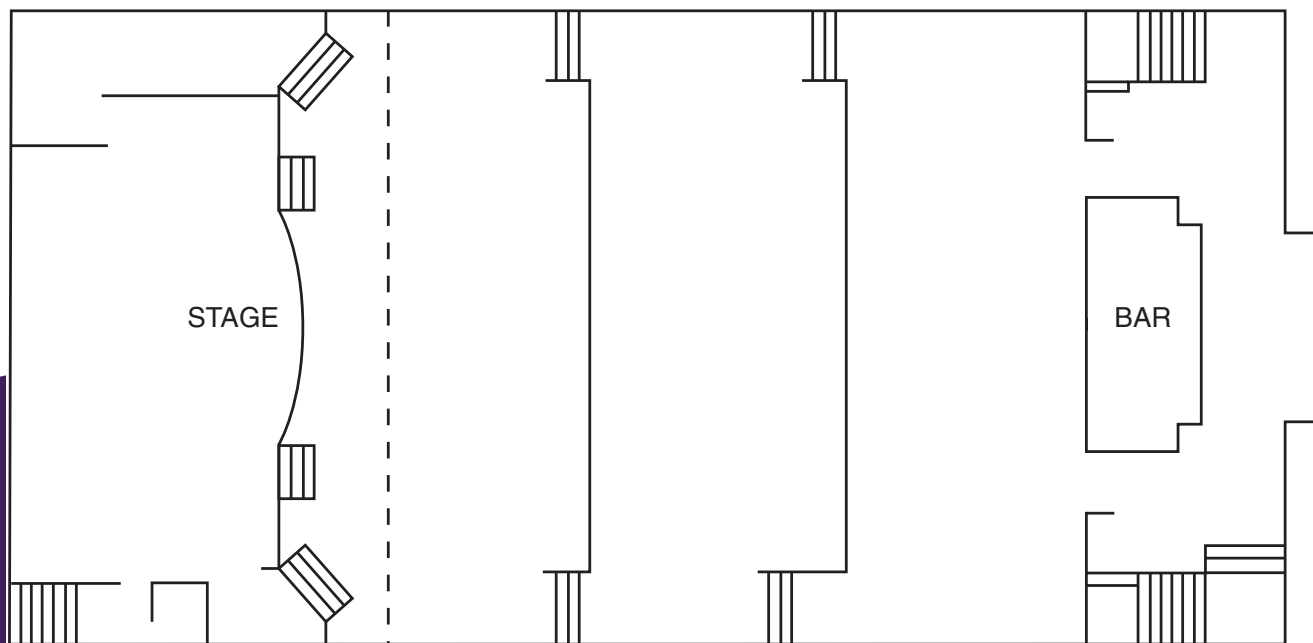
# Wareham Opera House

410 Poyntz Avenue  
Manhattan, KS 66502  
For reservations, call 785-320-7989  
info@supplyevents.com  
www.thewareham.com



Built in 1884, The Wareham Opera House was built to entertain. In 1911 electricity and a screen was added making the Opera house the second movie theatre in Kansas. Serving Manhattan with movies until 1986, today this beautiful building represents Manhattan and showcases Poyntz Avenue as an event center. The Opera House has a seating capacity of 550, including a stage and balcony.

Meeting Room Specifications	Room Size	Square Feet	Ceiling Height	Reception	Seating Capacity		
					Banquet	Theater	Classroom
Wareham Opera House	93' x 48'	4400	–	200	250	300	550



# K-State Alumni Center

17th Street & Anderson Avenue  
Manhattan, KS 66506  
785-532-6260, 1-800-600-ALUM (2586)  
www.k-state.com



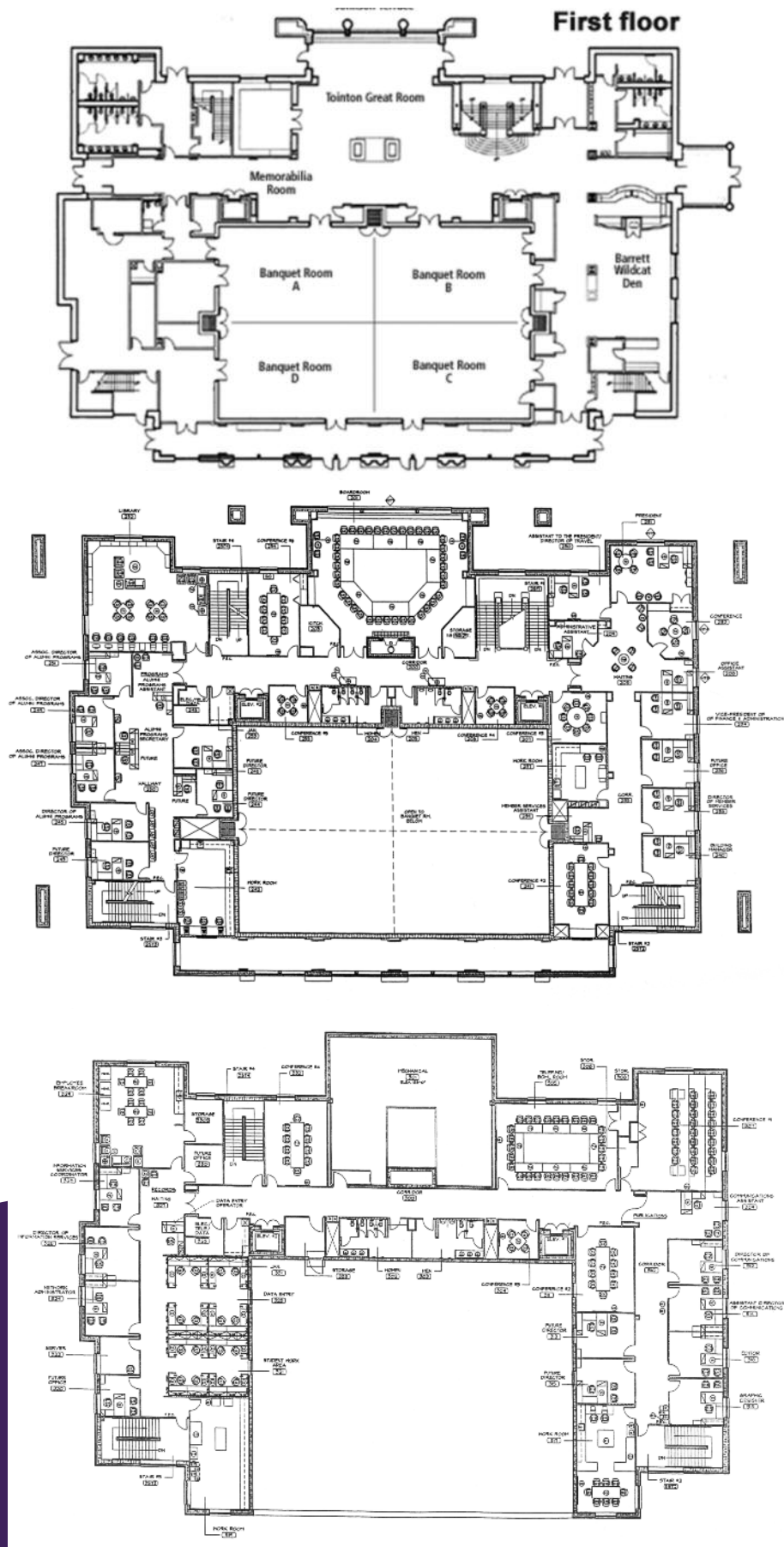
The K-State Alumni Center houses the Alumni Association offices and offers meeting and banquet facilities for the University and Manhattan community. Built of native Kansas limestone, the building has a large banquet room capable of seating 400 people at rounds with an large, adjacent catering kitchen. This room can be divided into four smaller rooms. Twelve additional conference rooms are ideal for meetings ranging from 4 to 100 people. The Tadtman Boardroom is the marquee room on the 2nd floor and offers breathtaking views of historic Memorial Stadium.

Conveniently located on the K-State campus, the Alumni Center is across the street from the Holiday Inn at the Campus. Some other lodging facilities are within a few short miles of the facility. The Alumni Center offers quick access to the K-State Student Union, The Beach Museum of Art, Aggieville and other local attractions.

Meeting Room Specifications	Room Size	Square Feet	Floor	Reception	Seating Banquet	Capacity Theatre	Round Table
Banquet Room	92 x 56	5152	Ground	750	480	550	400
Banquet Rooms A, B, C, D	46 x 28	1325	Ground	180	96	120	80
Great Room	40 x 37	1234	Ground	100	N/A	N/A	N/A
Wildcat Den	34 x 33	740	Ground	75	48	78	48
South Terrace	140 x 25	3,500	Ground	300	N/A	N/A	125
Johnson Terrace (north)	200 x 25	5,000	Ground	200	N/A	N/A	75
Tointon Great Room	45 x 38	1,710	Ground	100	N/A	N/A	N/A
Barett Wildcat Den	25 x 33	825	Ground	75	48	78	48
Tadtman Board Room	46 x 34	1552	2nd Floor	N/A	60	N/A	N/A
Hewson Board Room	11 x 10	110	2nd Floor	N/A	N/A	N/A	4
Jordan Conference Room	23 x 15	345	2nd Floor	30	16	20	16
Katlin Conference Room	16 x 14	225	2nd Floor	N/A	N/A	N/A	8
Bird Conference Room	11 x 10	110	2nd Floor	N/A	N/A	N/A	4
Kansas State Bank Conference Room	11 x 10	110	3rd Floor	N/A	N/A	N/A	4
Purple Pride Conference Room	32 x 23	736	3rd Floor	75	48	60	40
Lecture Room	34 x 23	782	3rd Floor	N/A	N/A	30	N/A
Truitt Conference Room	23 x 16	368	3rd Floor	30	16	20	16
PowerCat Conference Room	22 x 17	391	3rd Floor	30	16	20	16
* Round tables are based on seating eight people per table							



# K-State Alumni Center



# K-State Student Union

17th Street & Anderson Avenue  
Manhattan, KS 66506  
785-532-6591  
Fax: 785-532-6565  
[www.union.ksu.edu](http://www.union.ksu.edu)



This 250,000 square foot multipurpose facility is comprised of five levels, three of which provide main meeting, conference, planning and catering services, as well as state-of-the-art audio/visual technology and downlink/teleconferencing and videoconferencing capabilities. The K-State Student Union has 32 meeting rooms and a 90,000 square foot outdoor plaza. All spaces are available for meeting and catering services. Rooms include dining, two auditoriums, a spacious ballroom with seating for up to 1,000 people for a catered event, a courtyard for more intimate gatherings and several lounges to accommodate your conference needs. Wireless Internet is available throughout the building, while Audio/visual equipment is available by reservation. Most meeting rooms are equipped with 10baseT Ethernet jacks that provide computer connections to the campus Ethernet network and the Internet.

## Additional features: Copy

Center, fax, Postal service, Federal Express and Airborne Express, Notary Public, convenience store, salon, computer store, Caribou Coffee®, food court, cyber café, upscale dining, ATMs, check cashing and banking services, conference ID cards, bookstore, recreation, art gallery, parking and shuttle service. For a more complete listing of services, please go to [www.union.ksu.edu](http://www.union.ksu.edu).

The K-State campus also offers 16 air-conditioned lecture halls, which can accommodate 100 people or more in a theater-style seating arrangement.

Map #	Room	Number of People				Room Size		
		Meeting (Lecture/Chairs)	Banquet	Reception (Empty Room)	Classroom	Width X Depth (in feet)	Height	Square Feet
1	202	14	14	N/A	N/A	17x21	10	357
2	203	12	12	N/A	N/A	17x21	10	357
3	204	14	14	N/A	N/A	17x21	10	357
4	205	14	14	N/A	N/A	17x21	10	357
5	206	50	40	80	42	34x21	10	714
6	207	50	40	80	42	34x21	10	714
7	208	12	12	N/A	N/A	17x21	10	357
8	209	50	32	60	30	17x21	10	357
9	212	120	96	120	48	37x39	9	1443
10	213	90	40	75	50	24x48	9	1152
11	BIG 12 Room	N/A	N/A	N/A	110	47x49	varies	2303
12	Bluemont Room	150	100	150	48	34x60	11'5"	2040
13	Cats' Pause	N/A	N/A	50	N/A	30x59	9	1770
14	Cottonwood Room	125	96	150	48	29x48	9	1392
15	Council Chambers	22	N/A	N/A	N/A	22x47	9	1034
16	Director's Conf. Rm	15	15	N/A	N/A	24x24	10	576
17	Flint Hills Room	180	120	200	60	36x49	9	1764
20&23	Grand Ballroom	850	1000	1200	N/A	N/A	N/A	9306
18	K-Ballroom	125	72	150	36	36x40	14'5"	1440
18&21	K&S Ballroom	250	144	375	72	36x80	14'5"	2880
19	Konza Room	N/A	22	50	N/A	14x22	10	308
20	Main Ballroom	450	220	600	180	54x71	14'5"	3834
21	S-Ballroom	125	72	150	36	36x40	14'5"	1440
22	Sunflower Room	80	48	50	24	21x32	9'	672
23	West Ballroom	150	100	200	48	54x36	14'5"	1944
24	Art Gallery	50	32	60	N/A	29x37	10	1073
25	Center Stateroom 2	30	18	40	12	12x20	9	240
26	East Stateroom 1	36	18	40	12	14x20	9	280
27	Little Theatre	200	48	100	50	49x56	varies	2744
28	North Dining	140	96	120	36	29x34	9	986
29	West Stateroom 3	30	18	40	12	12x20	9	240
30	Courtyard	240	120	250	100	42x24	36	1008
31	Forum Hall	585	N/A	N/A	N/A	70x82	varies	5740
32	Union Station	200	120	200	100	46x83	9	3818

(1) Most meeting rooms have extra chairs along the wall.

(2) The banquet column is calculated using round tables for 8. May increase number by using 8' tables.

(3) s = standard/table too large to move

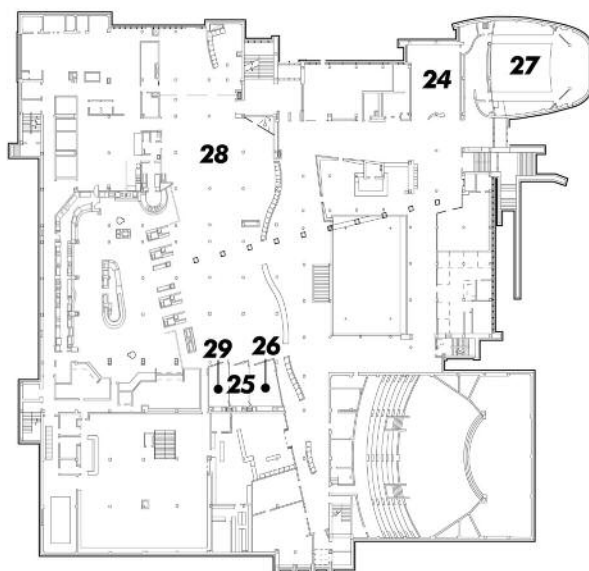
(4) The number beside the room name above corresponds to the number on the building map location.

# K-State Student Union (continued)



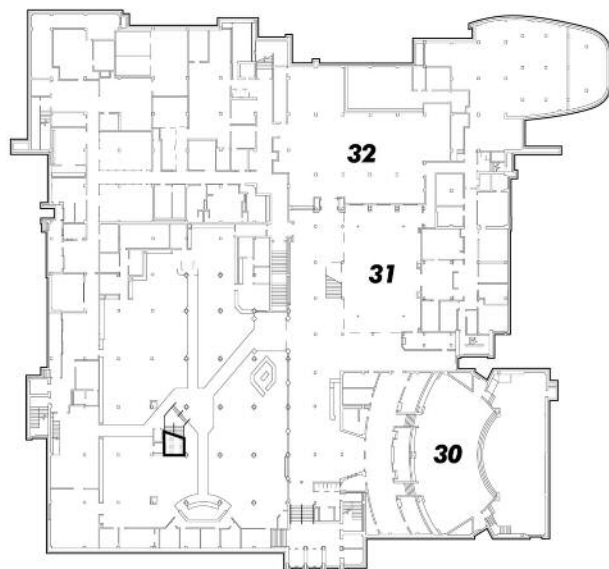
## SECOND FLOOR

- BIG 12 ROOM
- BLUEMONT ROOM
- CATERING OFFICE
- CAT'S PAUSE LOUNGE
- COTTONWOOD ROOM
- DIRECTOR'S OFFICE
- RESERVATIONS
- BUILDING SERVICES
- UNION GOVERNING BOARD
- FLINTHILLS ROOM
- GREEK AFFAIRS
- HUMAN RESOURCES
- K-S-U BALLROOMS
- MAIN BALLROOM
- OHNO EXHIBIT
- RESTROOMS
- SUNFLOWER ROOM
- WEST BALLROOM



## FIRST FLOOR

- ART GALLERY
- CATS' DEN
- CHILLIE WILLIE'S ICE CREAM
- COMMERCE BANK
- COMPUTER STORE
- COPY CENTER
- FOOD COURT
- ID CARD CENTER
- LITTLE THEATRE
- MSO OFFICE
- RESTROOMS



## GROUND FLOOR

- ATM's
- BOOKSTORE
- TICKETMASTER
- LOST & FOUND
- CHINESE WARRIOR EXHIBIT
- COFFEE SHOP IN UNION STATION
- COURTYARD
- FORUM HALL
- KSU OFFICE SUPPLIES
- MAINTENANCE OFFICE
- OFFICE OF STUDENT ACTIVITIES & SERVICES
- OVERNIGHT MAIL
- POSTAL CENTER
- RESTROOMS
- STUDENT HEALTH REPRESENTATIVE
- UNION STATION
- VENDING AREA

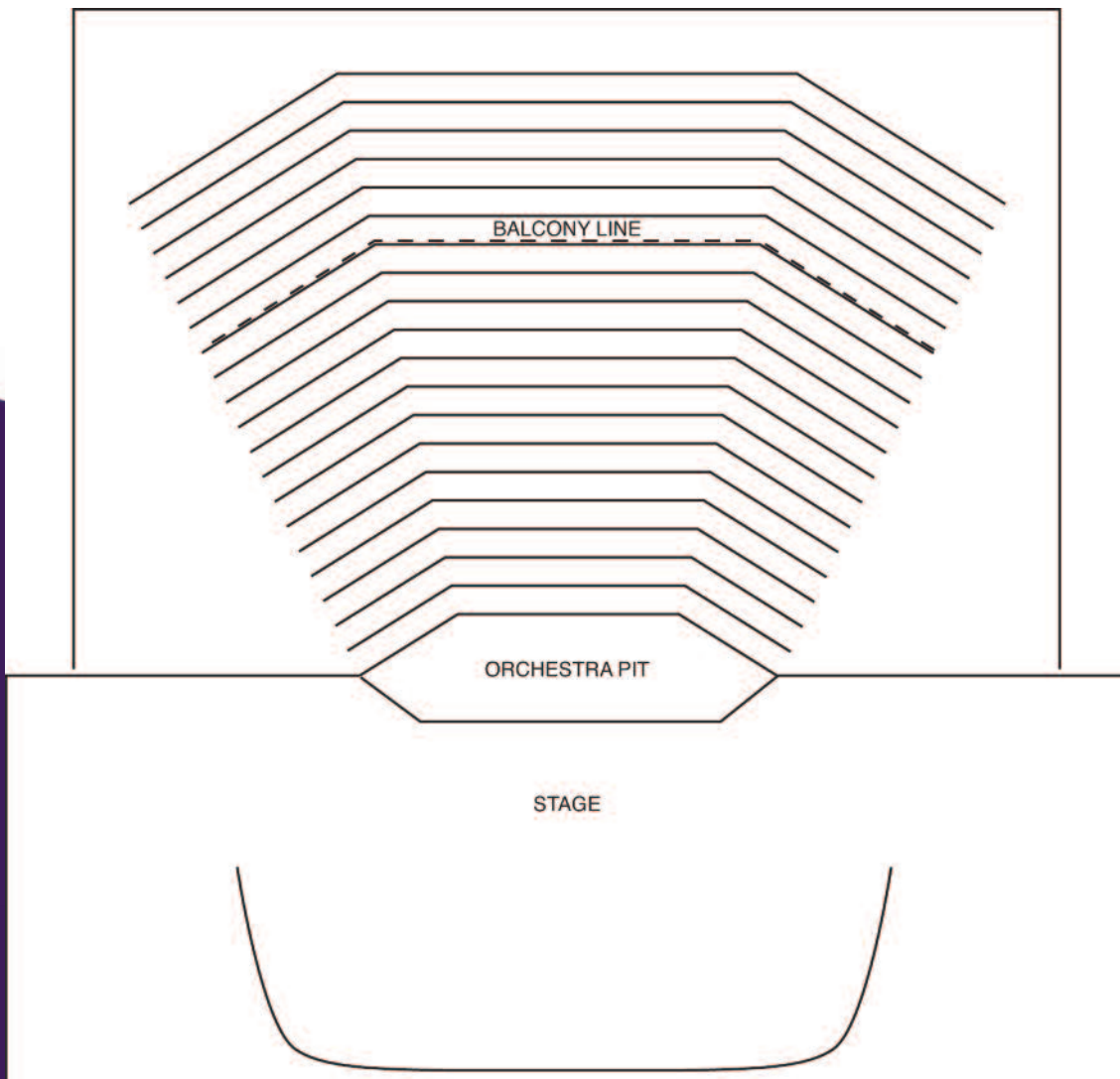


# McCain Auditorium

207 McCain Auditorium  
Kansas State University  
Manhattan, KS 66506-4711  
785-532-6425  
[www.ksu.edu/mccain](http://www.ksu.edu/mccain)



McCain Auditorium is the cultural center for the live performing arts and a host for numerous campus and community entertainment activities and special events. McCain has a total seating capacity of 1,751. The orchestra level contains 943 fixed seats in continuous rows. The balcony has 796 seats arranged in more traditional fashion with aisles. There is space for six wheelchairs and companion seating within the orchestra area. Construction is scheduled to be completed in May 2021 on an expansive lobby, a large multipurpose room, and two conference areas offering breakout space. On-site staff is available for light, sound and media needs. This facility has been used for performances, conferences, lectures, exhibitions/trade shows, summer camps, and other large events.



# Best Western

601 E. Poyntz Avenue  
Manhattan, KS 66502  
785-537-8300  
[bestwestern.com](http://bestwestern.com)

Offers 45 guest rooms, complimentary breakfast.  
Ideal for your overflow needs.



# Quality Inn

150 E. Poyntz Avenue  
Manhattan, KS 66502  
785-770-8000  
[qualityinn.com](http://qualityinn.com)

Offers 66 guest rooms, complimentary breakfast.  
Ideal for your overflow needs.





# 10 GREAT REASONS TO MEET IN **MANHATTAN**

## **#1 Walkable meeting destination in Kansas**

**Exceptional meeting venues**

**Over 1,300 sleeping rooms**

**50+ unique dining offerings**

**Home to Kansas State University**

**Gateway to the Flint Hills**

**Great attractions**

**Unique team building opportunities**

**Complimentary conference services**

**Air service from Manhattan Regional Airport**





Oh  
Man!

MEET IN  
*Manhattan* KS