

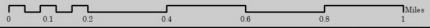


Marquette North Trails Snow Bike Route (NSBR)

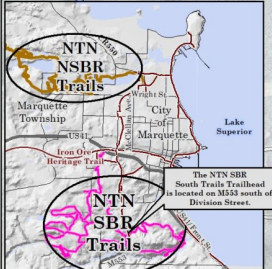
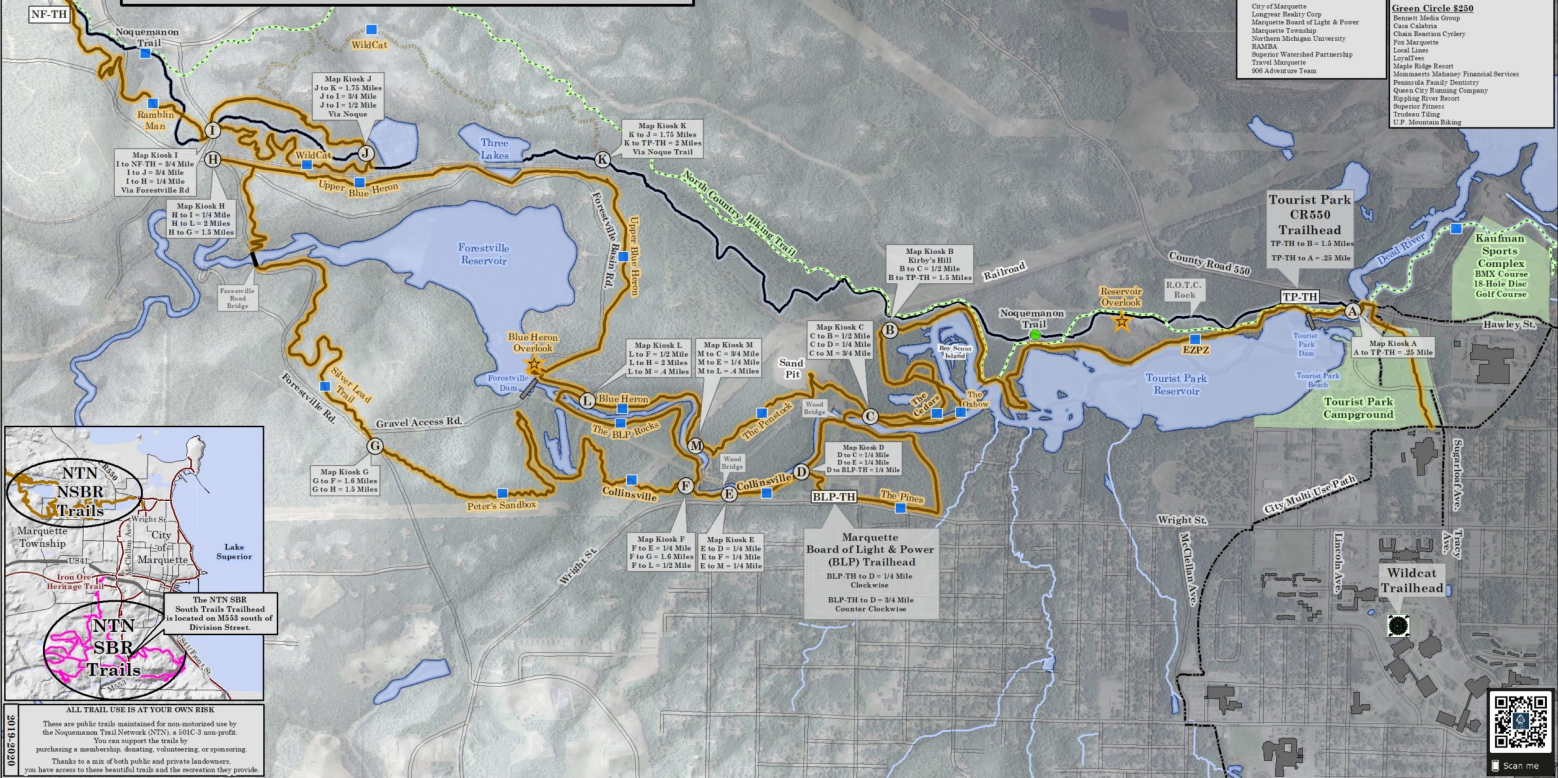
Non Motorized Recreation Area
Created, Maintained and Operated by NTN Volunteers

Map Legend

- NTN Snow Bike / Snowshoe Route (NSBR) = 13.5 Miles
- Trail Overlooks
- Miles



Noquegon
Forestville
Trailhead
NF-TH to I = 34 Miles



ALL TRAIL USE IS AT YOUR OWN RISK
These are public trails maintained for non-motorized use by the Noquegon Trail Network (NTN), a 501c-3 non-profit. You can support the trails by purchasing a membership, donating, volunteering, or sponsoring.
Thanks to a mix of both public and private landowners, you have access to these beautiful trails and the recreation they provide.

NTN Singletrack Sponsors

Support those that support the trails

Title Sponsor

Map support provided by:

NTN Singletrack Partners

- City of Marquette
- Longene Realty Corp
- Marquette Board of Light & Power
- Marquette Township
- Northwest Michigan University
- RAMBA
- Superior Watershed Partnership
- Travel Marquette
- 509 Adventure Team

Double Black Diamond \$2,500

- Police Media
- Lakeview Elix
- Quick Stop Raw Shop

Black Diamond \$1,000

- Active Physical Therapy
- Advanced Center for Orthopedics & Plastic Surgery
- Becker Cash
- Client's Auto Collision
- Down Wind Sports
- Fire Associates of Marquette
- Insurance Orthodontics
- Magee
- Pink Auto and Truck Service
- Upper Peninsula Periodontics

Blue Square \$500

- Active Physical Therapy
- Holiday Custom Metal Solutions
- Iron Valley Bank
- Sports Back Massage
- Professional Specialists of Marquette
- The Marq Restaurant
- Upper Peninsula Concrete Pipe Company

Green Circle \$250

- Banquet Media Group
- Chris Gaudin
- Clare Beachline Cycles
- Fin Marquette
- Local Lines
- Maple Ridge Resort
- Northwest Michigan Veterinary Services
- Peninsula Trails Property
- Quanta City Running Company
- Reynolds River Resort
- Superior Fitness
- Trishon Taling
- U.P. Mountain Biking

Marquette Board of Light & Power (BLP) Trailhead
BLP-TH to D = 1/4 Mile
Clockwise
BLP-TH to S = 3/4 Mile
Counter Clockwise



Scan me