

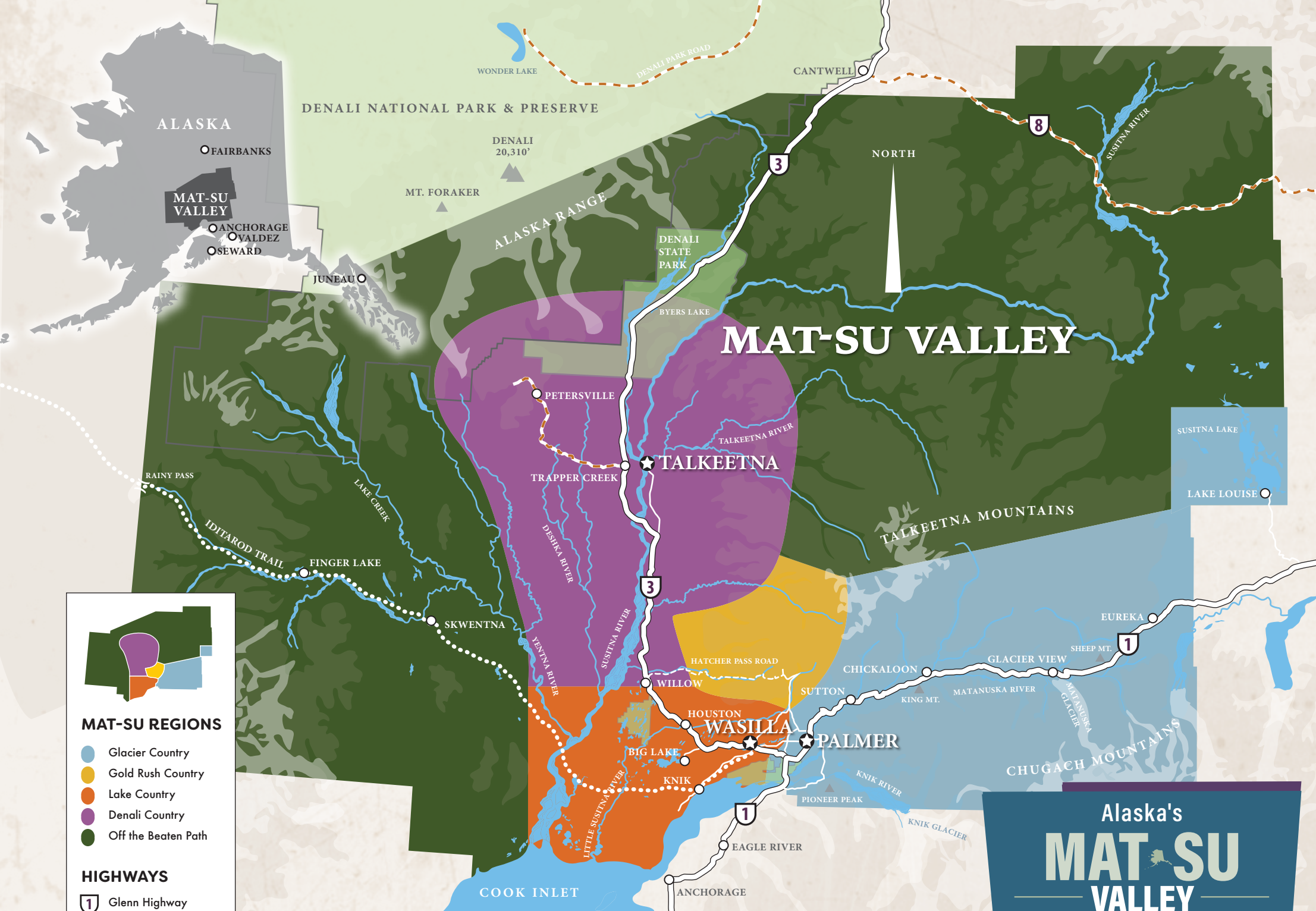
ALASKA'S MAT-SU VALLEY

JUST NORTH OF ANCHORAGE
ALL THE WAY TO DENALI PARK



OFFICIAL VISITOR GUIDE

alaskavisit.com



MAT-SU REGIONS

- Glacier Country
- Gold Rush Country
- Lake Country
- Denali Country
- Off the Beaten Path

HIGHWAYS

- 1 Glenn Highway
- 3 Parks Highway
- 8 Denali Highway

LEGEND

- Regional Center
- Mat-Su Townsite
- Primary Highway
- Paved Road
- Unpaved Road
- Iditarod Trail
- Nat'l/State Park

Road Distances mi/km	Anchorage	Wasilla	Palmer	Hatcher Pass**	Lake Louise	Talkeetna	Denali	Fairbanks	Valdez
Anchorage	0	42/68	42/68	60/97	160/260	113/182	237/381	362/583	304/489
Wasilla	42/68	0	10/16*	24/39	131/211	71/114	195/314	320/515	272/438
Palmer	42/68	10/16*	0	20/32	118/190	85/136	208/355	323/520	262/422
Hatcher Pass**	60/97	24/39	20/32	0	136/219	96/153	219/352	334/538	282/454
Lake Louise	160/260	131/211	118/190	136/219	0	203/326	326/525^	481/774^	163/262
Talkeetna	113/182	71/114	85/136	96/153	203/326	0	153/245	278/447	417/670
Denali	237/381	195/314	208/335	219/352	326/525^	153/245	0	125/201	470/756^
Fairbanks	362/583	320/515	323/520	334/538	481/774^	278/447	125/201	0	585/422^
Valdez	304/489	272/438	262/422	282/454	163/262	417/670	470/756^	585/422^	0

Alaska's
MAT-SU VALLEY

ALL ROUTES LEAD TO THE MAT-SU

The Mat-Su Valley is centrally located just 35 miles north of Anchorage, extends all the way into a portion of Denali National Park and is at the convergence of Alaska's major highways, truly making "the Valley" the Heart of Alaska.

Each region in this guide is identified by a corresponding color. Use this map to chart your course to adventure and guide you to exciting activities throughout the Mat-Su Valley.

NOTE: Distance figures have been rounded to the nearest m/km. Mileage has been taken from the "2024 Milepost"TM
^Via Glenn to Parks Highway *Via Palmer-Wasilla Highway
**Distance to Independence Mine State Historical Park

EXPLORE

DENALI
North America's
tallest peak



DISCOVER
the Native
Alaskan culture

TREK

on timeless
glacial ice



MARVEL
at Alaska's
iconic wildlife

ENJOY

hundreds of
miles of
wilderness trails



EXPLORE "THE VALLEY"

The Matanuska-Susitna Valley encompasses 23,000 square miles of mountains, glaciers, rivers and lakes. It's the Alaska you've always dreamed about, and bursts with adventures at every turn in the road.

Wide open spaces and the great outdoors make this area an ideal destination to relax and recharge. Locals call this region several names – "the Mat-Su Valley" or simply "The Valley" for short. Mat-Su is actually a shortened version of the proper name of the region, Matanuska-Susitna, which represents the two major rivers and valleys that form the region. The Matanuska Valley stretches along the Glenn Highway National Scenic Byway (Highway 1) all the way to Lake Louise. The Parks Highway (Highway 3) takes you north to Denali State Park in the heart of the Susitna Valley. The Valley begins just 35 miles north of Anchorage, making it a convenient destination for a day trip. Better yet, use the Mat-Su as your hub for a Southcentral Alaska adventure. Plan to stay awhile and discover all there is to see and do in this popular Alaska destination!

PASSPORT TO ADVENTURE

The Mat-Su Valley is such a vast and diverse region, you can't miss it. Boasting remote wilderness and classic Alaska communities such as Palmer, Wasilla, Big Lake, Houston, Willow, Talkeetna and Glacier View. Look for these town names on maps. Each one anchors a distinct region or "country" within the Mat-Su Valley worth your visit. This guide is organized by those regions, each highlighting a unique geographic draw:

GLACIER COUNTRY

Lake Louise and Matanuska Glacier (Glacier View) south to Palmer along the Glenn Highway National Scenic Byway (Hwy. 1), including Chickaloon, Sutton and the Knik River Valley.

GOLD RUSH COUNTRY

Hatcher Pass and Independence Mine State Historical Park.

LAKE COUNTRY

Wasilla north to Big Lake and Houston along the Parks Highway (Hwy. 3).

DENALI COUNTRY

Willow, Talkeetna, Denali State Park, and much of the Denali Highway (Hwy. 8).

OFF THE BEATEN PATH and THE REST OF ALASKA

Begin planning your visit to each of these regions to fill your passport with adventure.

TRIP
PLANNING

2

GLACIER
COUNTRY

11

GOLD RUSH
COUNTRY

23

LAKE
COUNTRY

27

DENALI
COUNTRY

34

OFF THE
BEATEN PATH

45

THE REST OF
ALASKA

47

TRIP PLANNING

— YOUR TOOLKIT FOR ADVENTURE —

PLAN AHEAD

In addition to this guide, start your planning at www.AlaskaVisit.com to discover what awaits. The site is packed with information, a calendar of events, an informative blog as well as beautiful images of the area. Check out the suggested itineraries section for ideas ranging from day trips out of Anchorage to multi-day adventures. When you start planning, use our database of member businesses to find the perfect fit for your vacation. Make sure to sign up for the e-newsletter to stay up to date.

You can request a digital version of the visitor guide, so you'll always have it on your computer or tablet.

CONNECT WITH US!

If you want to get a sneak peek at what you'll see, check us out on Instagram – we're [@matsuvaleyak](https://www.instagram.com/matsuvaleyak) – and don't forget to tag your photos with [#yahoomatsu](https://www.instagram.com/yahoomatsu).

Visit our Facebook page at www.facebook.com/visitmatsu to keep up with what's going on, and check out www.alaskavisit.com/blog for unique insights on things to see and do, from an Alaskan's perspective. To really get excited, visit our expanded channel on YouTube at www.youtube.com/yahoomatsu, where you'll find videos from every corner of the region.



WEB SITES FOR LOCAL CHAMBERS OF COMMERCE

WWW.PALMERCHAMBER.ORG

WWW.WASILLACHAMBER.ORG

WWW.WACO-AK.ORG

WWW.TALKEETNACHAMBER.ORG

VISITOR INFORMATION IN EVERY DIRECTION

The Mat-Su Valley, much like Alaska in general, is a big area and can seem overwhelming to first-time visitors. Friendly and helpful resources in every community will help make your trip a success. Stop in and talk with the locals – they can steer you in the right direction.

In Palmer, the Palmer Museum and Visitor Center is open year-round. They have a wealth of knowledge about Palmer's Colony project and agricultural history. Check out their amazing garden in the summer, featuring Alaska wildflowers and vegetables. There's even a replica of a world-famous giant cabbage.

Location: 723 S. Valley Way, Palmer
Phone: (907) 746-7668

Hours: May 1-Sept. 15, open Monday-Saturday from 9 a.m. to 6 p.m. and from 9 a.m. to 2 p.m. on Sunday. Sept. 16-April 30, open Tuesday-Friday 10 a.m. to 4 p.m.

The Greater Wasilla Chamber of Commerce operates a visitor center in the historic train depot. Stop in even if you aren't on the train for more information about the Wasilla area.

Location: 1155 E. Depot Rd.

Phone: (907) 376-1299

Hours: Monday-Thursday from 9 a.m. to 5 p.m. and Friday-Sunday from 9 a.m. to 3 p.m.

Also in Wasilla, the **Wasilla Museum**, formerly known as the Dorothy Page Museum, doubles as a visitor information center. You can learn about Wasilla's rich history, including touring the actual old townsite, and get information for your next adventure.

Location: 391 N. Main St., Wasilla

Phone: (907) 373-9071

Hours: Open Tuesday-Friday from 10 a.m. to 3 p.m.

In the small community of **Talkeetna**, there isn't a visitor information center, but an unmanned kiosk at the corner of Spur Road and Main Street (the main intersection) has a wealth of information about area attractions and lodging opportunities. Also, visit www.talkeetnachamber.org for informative trip planning information.

Along the Glenn Highway, **Alpine Historical Park** at Mile 61.6 has information about the area's history, as well as visitor information for the Matanuska Valley. The open-air museum and historical park focuses on the early settlers and the Athabaskan cultures in the Sutton and Chickaloon areas.

Location: Mile 61.6 Glenn Highway, Sutton

Phone: (907) 745-7000

Hours: Open daily, 10 a.m. to 4 p.m., mid-May through mid-September

Glacier View has an informational kiosk located at Mile 99 Glenn Hwy., with information about the region near Matanuska Glacier including rafting, glacier trekking and helicopter tours and lodging.

FIND YOUR NEXT ADVENTURE

Alaska is the only state where there are no interstate highways. However, three state highways frame the Mat-Su Valley: the Glenn (Highway 1), Parks (Highway 3) and Denali (Highway 8) highways. The Denali Highway is not paved, but the Glenn and Parks are major highways. If you're a do-it-yourself traveler, fly to Anchorage, rent a car or motorhome and drive to the Mat-Su Valley and let the area be your hub for your adventure. Or, if you prefer more guidance, let tour professionals arrange one-day and multi-day tours with transportation included. Find a list on www.alaskavisit.com.

STEP OFF THE SHIP AND INTO ADVENTURE

CHOOSE MAT-SU WHEN YOU CRUISE

The Mat-Su Valley may be miles from the nearest cruise port of call, but it can be a major part of your Alaska cruise vacation. Don't limit yourself to just the coastline when visiting Alaska via a cruise, and add on a land portion – you'll see a whole other side of Alaska! Set aside time before or after your ocean journey to explore Alaska beyond its coastlines. Many companies offer inclusive land tour options to add to your trip, either before you embark or after your cruise. It's also easy to do it yourself with some planning.

The Mat-Su Valley's location is ideal to add a day trip (complete with round-trip transportation), a three-day or even week-long excursion either before or after your Alaska cruise. Take some time and explore Southcentral Alaska, including spectacular views of Denali.

Step off the ship, and in just three days, you can:

1. Experience Denali – stay in Talkeetna and marvel at the view. The town has a vibe all its own. From Talkeetna, you can flightsee around Denali, take a jet boat trip up the many rivers, raft and hike. The quaint town may be hundreds of miles from the nearest cruise port, but it's a destination you don't want to miss on your land portion.
2. Walk on a glacier –Matanuska Glacier is just two hours north of Anchorage, and you can trek on the timeless ice. If you are short on time, consider a helicopter tour to Knik Glacier.
3. Experience our culture – in the core area of Wasilla and Palmer, visit museums, the Musk Ox Farm and the Iditarod headquarters to find out about the region's history and culture.

NEED MORE IDEAS?

Go to www.alaskavisit.com to see suggested itineraries, a complete calendar of events, blog posts and listings for businesses that can assist your planning. Or call the Mat-Su Convention and Visitors Bureau at (907) 746-5000. We look forward to seeing you in our neck of the woods.

SHARE YOUR EXPERIENCES

Share your experiences in the Mat-Su Valley with us long after you've returned home. Stay connected to the places and people you discover during your visit on social media. Like and follow us on Facebook at **Visit Alaska's Mat-Su Valley**. We are also on Instagram at **@matsuvolleyak** and don't forget to hashtag your photos **#yahoomatsu**. Get excited about your visit by watching our videos on YouTube (**yahoomatsu**). Finally, check out www.alaskavisit.com/blog to keep up with what's happening in the Mat-Su Valley.

WHAT TO PACK

HIKING BOOTS
FISHING POLE
SENSE OF ADVENTURE



the Mat-Su Valley. Take the family on a gentle, historic railroad trail near Palmer, or hike a ridge surrounding the mining region of Hatcher Pass, with views of the Matanuska Valley below. Explore the alpine wilderness of the Talkeetna Mountains on foot or ATV, or by professional guide service for even more adventure. For amazing views in just an hour, try the Butte just outside of Palmer. Denali State Park has many trails with views of the Alaska Range, including an ADA-accessible trail at K'esugi Ken Campground. You can find trail maps at www.alaskavisit.com/trails.

HIT THE WATER

The Mat-Su Valley is home to countless rivers, lakes, creeks and streams, so the Mat-Su has something for every water enthusiast. You can rent a canoe or kayak for a serene afternoon on a lake or help paddle a raft down a river with an expert guide. The Lynx Lake Canoe Trail in Nancy Lake State Recreation Area off the Parks Highway in Willow offers easy portages between lakes, campgrounds and cabins for rent. Farther north in Denali State Park, you can rent canoes at Byers Lake. Lake Louise (off the Glenn Highway) is also a premier destination for water activities. Lake fishing is one of the Mat-Su Valley's best-kept secrets.

LEARN ABOUT THE LOCALS

The Mat-Su Valley's history is diverse, from a rich Alaska Native Athabascan culture to gold mining and agriculture. Find out about this history at one of the many museums.

- The Wasilla Museum is a great place to start. Wander through historic buildings and see exhibits that tell stories of the area's past.
- The Museum of Alaska Transportation and Industry is filled with relics from Alaska's past, including airplanes, railroad cars and vintage automobiles.
- On the Glenn Highway, stop in at the Alpine Historical Park to learn about the Alaska Native culture. Ahtna and Dena'ina Athabascans were the first people to live on this land.
- Palmer's agricultural roots are on display at the Palmer Museum of History and Art and the Colony House Museum.
- Take Talkeetna's historic town walking tour and learn for yourself how the miners and trappers lived. Don't forget the Talkeetna Historical Society Museum or the Walter Harper Talkeetna Ranger Station to learn about Alaska's mountain climbing legends.



MARVEL AT NORTH AMERICA'S HIGHEST PEAK

20,310-foot Denali is a spectacular sight to behold! Heading north on the Parks Highway (Hwy. 3), you'll get your first glimpse of the mountain in Willow. Farther north in Talkeetna, there are many activities focused on Denali. The southern views of Denali are widely considered the best in the state.

- Walk the lakeside trail around Byers Lake or climb to K'esugi or Curry Ridge in Denali State Park for undisturbed vistas of the "High One."
- Parks Highway pullouts at mileposts 135 and 147 provide safe areas to capture Denali's grandeur.
- The K'esugi Ken Campground at Mile 135.4 offers amazing views of Denali as well with easy walking trails to viewpoints.
- Dramatic aerial views of Denali's lofty summit, flanking glaciers and granite canyons highlight flightseeing trips from Talkeetna.

SCENIC DRIVES

Leave the crowds in the city and head out on a scenic drive - the Mat-Su Valley is filled with gorgeous scenery and sweeping vistas in every region.

TRIP 1:

Head north on the Glenn Highway National Scenic Byway (Hwy. 1) and enjoy the views of the Chugach and Talkeetna mountains, while the Matanuska River frames your drive. Trek on Matanuska Glacier or try an exciting raft trip through Lion's Head rapids. Stop at a local roadhouse for a tasty lunch or cozy overnight stay.

TRIP 2:

Drive over Hatcher Pass Road to Willow – it opens to traffic around the Fourth of July and stays open until mid-September, weather permitting. Check with Alaska State Parks to confirm the road is open if you are traveling in early summer or late fall. Visit Independence Mine and Willow Creek for a scenic loop of the Susitna Valley. Keep an eye out for the abundant wildlife in the area, including moose and bear.

TRIP 3:

Petersville Road runs through the mining backcountry of Trapper Creek in Denali Country – watch for wildlife and have your camera ready! This is an unpaved drive, so be sure your vehicle is capable of the drive.

DAY TRIPS FROM ANCHORAGE

Less than an hour's drive north from Anchorage, the Mat-Su Valley is perfectly situated for day trips. Enjoy our parks and trails as you get away from the crowds - you'll feel recharged after a day exploring in the great outdoors.

TRIP 1:

Strike it rich – head to Hatcher Pass, Independence Mine and the Willow area to see mining's historical influence on the area. Guided tours are offered daily in the summer at the mine. Don't forget your gold pan – if you do, you can rent one at the mine. There are many hiking trails in the area, and the views are spectacular as well.

TRIP 2:

Get cultured – visit Wasilla and Palmer in an afternoon and you'll see the Iditarod Headquarters, a variety of museums, the Palmer Musk Ox Farm and the Reindeer Farm. Take a farm tour to see Palmer's agricultural roots and stop at a local restaurant for an Alaska Grown lunch.

TRIP 3:

Go big – as in Denali. North of Wasilla on the Parks Highway, you can visit Talkeetna for an afternoon spent flightseeing, dining, shopping, fishing, rafting or just photographing Denali. It's a great way to spend a leisurely afternoon.

FAMILY VACATIONS

Bring the whole family to the Mat-Su Valley for an exciting, and educational, experience.

TRIP 1:

Go fossil hunting along the Glenn Highway, gold panning in Hatcher Pass, bird viewing on the Palmer Hay Flats State Game Refuge, camping and more.

TRIP 2:

There are endless hiking opportunities for people of all ages and abilities. Rent a canoe and take advantage of Nancy Lake State Recreation Area or Matanuska Lakes Recreation Area for exciting outdoor fun. Try Hatcher Pass for a great day trip with lots of views.

TRIP 3:

Fun for all ages, Friday Flings, Colony Days or the Alaska State Fair are fantastic community celebrations in downtown Palmer. Don't forget about Wasilla and Talkeetna's annual Fourth of July parades and picnic.

WHAT TO PACK

BINOCULARS

BIRD GUIDEBOOK

CAMERA



WILDLIFE AND PARKS

PART OF OUR NATURE

Alaskans flock to the Mat-Su Valley for its many outdoor recreation opportunities. State parks, from Palmer to Denali, allow you to escape the crowds and enjoy the outdoors. The Mat-Su Valley is where Alaskans come to play! Keep an eye out for wildlife and the scores of migrating birds that come here to nest and raise their young. Be safe and remember to respect the wildlife.

MOOSE

Winter and spring are good times to spot these large creatures on the Palmer Hay Flats State Game Refuge. Keep an eye out along the highway, especially near rivers and ponds. Enjoy them from afar – don't try to feed the moose. They are also prominent along the Glenn Highway north to the Sheep Mountain area. Knik River Road off the Old Glenn Highway is another popular spot to view moose.

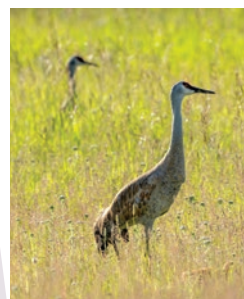


CARIBOU

Related to moose and elk, caribou live in the northern and eastern reaches of the Mat-Su Borough. Herds are frequently spotted along the Denali Highway and near Lake Louise, along Hwy. 1.

BEAR

Both brown and black bears are found throughout the Mat-Su Valley. Spotting bears is easiest on a flightseeing tour or by hiking off the main road system. They're also found along creeks and streams when the salmon are spawning. Be "bear aware" and carry bear spray. When traveling in the backcountry, be sure to make noise to avoid any potential confrontations. Be bear aware!



BIRDS

From bald eagles and red-tailed hawks to songbirds and swans, a wide variety of birds travel through or spend the year in the Mat-Su. Identify them by their calls or keep an eye to the sky. The Palmer Hay Flats and Rabbit Slough, as well as the University of Alaska agriculture fields on Trunk Road, attract many migratory birds such as cranes and geese in spring. Along the Glenn Highway north, watch for migrating hawks, falcons or other raptors. Download an Alaska Birders Checklist at www.alaskavisit.com.

DENALI STATE PARK

(2.5 hours north of Anchorage)

The best views of Denali in all of Alaska can be found in Denali State Park, the smaller and less-crowded area south of the national park entrance. The views from Denali State Park are actually better than in the national park! Stop at the Denali Overlook (MP135.2 Parks Hwy) or hike the trail to K'esugi Ridge for incredible views. The K'esugi Ken campground is located at Mile 135.4 Parks Hwy. It features easy hiking trails – some are ADA compliant – that have overlooks with panoramic views of Denali and the Alaska Range. Guided or self-guided nature hikes are available around Byers Lake. There are numerous opportunities for tent and RV camping, as well as kayak rentals.

PALMER HAY FLATS STATE GAME REFUGE

(35 minutes north of Anchorage)

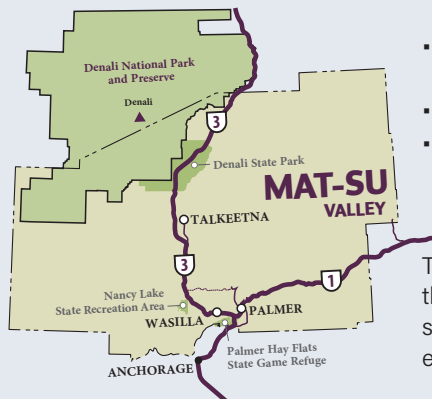
The gateway to the Mat-Su Valley from Anchorage, this refuge has endless photography and recreation possibilities, including kayaking, canoeing and hiking. Birders, wildflower lovers and outdoor enthusiasts flock to the area. Access hiking trails from the Knik River exit (Reflections Lake) or Cottonwood Creek in Wasilla (Scout Ridge Trail). Reflections Lake also has fantastic recreational opportunities in the winter, with ice skating and cross-country skiing trails.

NANCY LAKE STATE RECREATION AREA

(1.5 hours north of Anchorage)

Near Willow, this network of 130 lakes features camping areas, canoe rentals, and hiking and ski trails. Fish for rainbow trout, arctic char and northern pike. Reserve public-use cabins, available for rent on a nightly basis. Plan ahead and rent your cabin up to six months in advance through the Alaska State Parks' website.

OTHER STATE RECREATION AREAS INCLUDE:



- Big Lake (north and south)
- Finger Lake
- Independence Mine and Hatcher Pass
- Matanuska Lakes
- King Mountain
- Lake Louise
- Matanuska Glacier
- Willow Creek
- Summit Lake

The Mat-Su Valley encompasses an area roughly the size of West Virginia, so plan ahead and spend some time exploring. Take a couple days to explore everything there is to offer.

A HIKER'S PARADISE

The Mat-Su Valley is a hiker's paradise, with thousands of miles of trails in seemingly every direction. The Mat-Su Valley spans 23,000 square miles, so if hiking in Alaska is your dream, the Mat-Su Valley is the place for you.

No matter which region of the Mat-Su Valley you find yourself in, there are amazing trails. Here are a few of the more popular trails in every region.

DENALI COUNTRY

- K'esugi Ridge is a very popular multi-day trek for hikers with lots of experience. It has expansive views of Denali, Mount Hunter, Mount Foraker and the rest of the Alaska Range.

- K'esugi Ken Campground at Mile 135 Parks Highway (Hwy. 3) offers an easy hike with great views. The loop is even ADA compliant.
- Talkeenta trails include the popular Talkeenta Lakes that offers an easy hike with great views.

LAKE COUNTRY

- Lake Lucille Park has a series of trails ideal for day hikers, located just north of Wasilla.
- Settlers Bay Coastal Park has a series of trails that lead to sweeping views of Cook Inlet. This is the newest trail system in the Mat-Su Valley.
- Scout Ridge Trail is part of the Palmer Hay Flats State Game Refuge and is an easy 1.25-mile loop.

GOLD RUSH COUNTRY

- Gold Mint, Gold Cord and Reed Lakes are popular hikes in Hatcher Pass with views of the Matanuska Valley.
- Government Peak Trails are located at the base of Hatcher Pass and have a series of loops that are ideal for mountain biking.
- Independence Mine has paved walkways around an abandoned gold mine. Guided hikes are available.

GLACIER COUNTRY

- The Butte is located near Palmer and includes a 900-foot vertical hike with a stair system. Once on top, you are treated to 360-degree views of the Matanuska Valley.
- Matanuska Greenbelt is a series of interconnected trails that go from Matanuska Lakes Park to the Crevasse-Moraine trail system.
- Reflections Lake has a 1-mile trail around the lake, along with a wildlife viewing platform where you can spot moose and migratory birds.
- Around Matanuska Glacier, try the Sheep Mountain trail system or the loop at the Matanuska Glacier State Recreation Area.

KNEE DEEP IN WINTER

SEASONAL CELEBRATIONS!

Talkeetna Winterfest

A month-long celebration that features various activities, including the internationally recognized Talkeetna Bachelor Society Auction & Ball and Wilderness Woman Competition, which is held the first Saturday of December. Community activities held throughout December. (907) 315-8012. www.talkeetnachamber.org

Colony Christmas in Palmer

A "Norman Rockwell"-style Christmas celebration, featuring a tree lighting ceremony, horse-drawn carriage rides, fireworks, Made in Alaska craft fairs, a parade of lights and of course, Santa Claus. Held the second weekend in December. (907) 745-2880. www.palmerchamber.org

Willow Winter Carnival

A celebration of winter that includes dog sled races, snowmobile racing, arts and crafts, and even outhouse races. Last weekend in January and first weekend in February. (907) 495-6800. www.waco-ak.org

Iron Dog

The world's longest snowmobile race begins on Big Lake in mid-February. Racers travel all the way to Nome, before turning around and heading back to the finish line on Big Lake, a race of more than 2,200 miles. www.irondog.org

Iditarod Trail Invitational

One of the most grueling events in the world, racers depart Knik Lake in early March and head out in the remote wilderness. Snowshoes, bikes or cross-country skis are their only modes of transportation, and the finish line is 350 miles away in McGrath, or 1,000 miles away in Nome. www.iditarodtrailinvitational.com

World Famous Iditarod Sled Dog Race

Known around the world, the Iditarod begins on Willow Lake the first Sunday in March. Racers and their teams of dogs traverse their way to Nome. The restart is family-friendly and a great chance to meet a famous musher. (907) 376-5155. www.iditarod.com

LOOKING FOR SNOW?

See a whole new side of Alaska by visiting in the winter. The Mat-Su Valley is an ideal winter destination. The Mat-Su Valley's first-ever triple-chair lift access ski area, Skeetawk, is located in beautiful Hatcher Pass and is very popular. It is open on select evenings for night skiing, and all day Saturday and Sunday, weather permitting. It is based at Mile 10.6 Palmer Fishhook Road, on the way up to Hatcher Pass. Visit www.skeetawk.com for current conditions, hours and more. The Hatcher Pass area gets some of Southcentral Alaska's best snow and has world-class Nordic skiing trails at Government Peak. Whether you prefer first tracks in fresh powder or groomed trails, the Mat-Su is the place to be.

Removed from city lights, our starry darkness sets the stage for the brilliant colors of the northern lights. From alpenglow sunsets on Denali to the fresh, deep snow covering our lakes and peaks, you'll find yourself inspired and invigorated by a winter visit. A guided snowmobile trip to a local glacier is an unforgettable experience. Plan a trip before it melts.

Keep an eye out for business listings that are open year round ☀️❄️, summer only ☀️ and winter only ❄️. You'll be amazed by the number of things to see and do throughout the year.



WINTER AT YOUR FINGERTIPS! WHERE TO GO; WHAT TO DO

- Escape the city lights and crowds of Anchorage for a view of our spectacular northern lights in Hatcher Pass, Knik River Valley or Denali State Park. Clear nights, September through April, are best. Dress warm!
- Celebrate with the Iditarod Trail Sled Dog Race. The race begins on Willow Lake on March 2, 2025 and continues all the way to Nome, more than 1,100 miles.
- Visit a working sled dog kennel and find out what it takes to lead a team of huskies. Several Iditarod mushers offer sled tours throughout the year. Enjoy an exhilarating ride in the basket of the sled of an Iditarod champion, or try your hand at leading a team. Many kennels are open year-round, so remember to come visit again in the summer.
- Explore our endless fields of snow by renting a snowmobile and picking up a trail map, or for a grand adventure, take a guided snowmobile excursion into Alaska's backcountry. No experience necessary. Several guided tours go right up to glaciers.
- Glide on the rails of the Alaska Railroad and stop in Talkeetna to see Denali's towering alpenglow peak. Rail service is available northbound on Saturdays and southbound on Sundays only during the winter, with some mid-week trains available later in the winter.
- Ice-fish for land-locked salmon, rainbow trout, arctic char and northern pike. Many Mat-Su Valley lakes are stocked throughout the year. Guides have all the gear and the knowledge you need to get started.
- Cruise the skies on a flightseeing adventure of Knik Glacier, Matanuska Glacier, Chugach State Park, or Denali and the Alaska Range. Many say winter is the best time to see these peaks.
- Cross-country ski at Government Peak or ski and snowboard virgin powder at Skeetawk in Hatcher Pass. Government Peak has a warming chalet to complement over twenty-four kilometers of world-class groomed Nordic trails.



With deep agriculture roots, towering mountains and accessible glaciers make Glacier Country a 'MUST VISIT' in the Mat-Su.

GLACIERS & GIANT VEGGIES

The Matanuska Valley was carved by glaciers thousands of years ago, and their impact remains today. The fine, fertile silt left behind by these receding glaciers, combined with long daylight hours in the summer, makes the area perfect for growing lush hayfields and world-record veggies. The Palmer area is the agricultural hub of Alaska - look for Alaska Grown vegetables! You'll be able to taste the difference - carrots are typically sweeter than those grown in the "Lower 48," for example.

- In Sutton and Chickaloon, learn about the region's rich Athabascan culture at the Alpine Historical Park.
- In the Glacier View area, explore Matanuska Glacier on a trek or ice climb. Easy to get to, it's Alaska's largest road-accessible glacier. You can do it on your own, or go out with one of the many companies who guide on the glacier - they know the best spots. Take a rafting trip down the Matanuska for a grand adventure. Enjoy helicopter tours and luxury camping opportunities.
- Explore the northern region of Glacier Country by visiting Lake Louise, located halfway between Anchorage and Valdez, just 19 miles off the scenic Glenn Highway. The peaceful lake is a hub of recreational opportunities in both summer and winter. The Nelchina caribou herd migrates through this area each year. Lodges, campgrounds and a public boat launch are available.
- Closer to Palmer, boat, helicopter or take an ATV tour to Knik Glacier. This is only an hour north of Anchorage. Stop at a roadside stand or farmers market for fresh organic vegetables, wild honey or dairy products.



PALMER

Just 45 minutes north of Anchorage, this small town takes pride in its agricultural roots while nurturing a contemporary Alaska “chic.” The downtown area is very walkable and features locally-owned shops, cafes and microbreweries. In 1935, President Franklin D. Roosevelt sanctioned a relocation program that brought 203 farming families to Palmer from the Midwest. Parcels of land were distributed to the “colonists” by lottery to farm and raise dairy cattle. Celebrate the anniversary of this historic event in June at Colony Days.

Start your visit at the Palmer Museum and Visitor Center, which has an amazing garden and replicas of those giant vegetables. Pick up a downtown walking map while you’re there and tour the original Matanuska Colony. You can rent a headset for a narrated self-guided historical walking tour of the town, or take the guided tour. On Fridays, an open-air market, featuring local artisans and growers, opens across from the center. Just up the street, tour a restored Colony home (circa 1935). And don’t forget Palmer’s most celebrated attraction, the Alaska State Fair, which takes place in late August and early September, ending on Labor Day.



WHERE TO GO; WHAT TO DO

- Interested in agriculture? Tour Palmer’s backcountry roads to see working farms or sample locally grown products at one of Palmer’s restaurants. Guided farm tours are also available. The downtown area has a feel all its own, and you can spend an afternoon visiting the quaint shops and restaurants, many of which serve Alaska Grown products on their menus. With three microbreweries, downtown Palmer is also a great place for brewery tours.
- Get into the swing of things at the Palmer Golf Course, offering stunning views of the Chugach Mountains, Matanuska River and Knik Glacier.
- Hike, bike or ATV one of the many trails that begin just off the Glenn Highway; loop through miles of wilderness.

FARMS AND FLOWERS

NINE TIMES WARMER THAN WOOL

Learn about the prehistoric Musk Ox at the Musk Ox Farm near Palmer. Native artists use the precious underwool (qiviut) to make beautifully knitted garments with superior warmth. Guided interpretative tours are available daily.

A THRIVING ATHABASCAN CULTURE

The Chickaloon Native Village is an Ahtna Athabascan tribe in Sutton, along the Matanuska River on the Glenn Highway. The tribe has occupied the area for 10,000 years, and their culture and traditional way of life has been unwavering. In the Ahtna language, Chickaloon means “the river with the two logs across it.” Stop at Alpine Historical Park to learn more about the history and culture of the first inhabitants of the region.

PICK YOUR OWN

A feast for the eyes and taste buds – Alaska’s freshest produce! Wasilla farmers market is held every Wednesday at the west end of the Iditapark complex. Palmer’s Friday Flings market runs every Friday from late May to the end of August, across from the Palmer Museum and Visitor Center. Visit alaskavisit.com for market and u-pick farm locations and hours.

ALASKA-SIZED VEGGIES

Imagine a 138-pound giant cabbage, a 20-pound cucumber or a 65-pound cantaloupe. Amazing! These are just a few of the world records set at the Alaska State Fair. See the real thing as the huge veggies are weighed-in at the Fair in late August. World records are routinely broken for all types of vegetables.

DON’T MISS THE ALASKA STATE FAIR

Alaska’s largest event, the Alaska State Fair, takes place in Palmer every August to early September. It’s 14 days of fun over three weekends (not open on Tuesdays and Wednesdays), food and excitement, and there is something for every visitor.

The fair ends on Labor Day and begins three weekends prior and is the best place to see giant vegetables for which the Palmer area is so famous. There are “weigh-off” competitions for pumpkins and cabbages at the fair, and

they bring them in on giant pallets to be weighed in an arena, in front of the audience. Pumpkins weighing more than 2,000 pounds have been entered and the world record for cabbages stands at 138-pounds.

In addition to the giant vegetables, the Alaska State Fair features numerous exhibits, cultural celebrations, concerts, live performances and much more – you’ll want to plan to stay an extra day to take it all in.

DISCOVER KNIK RIVER VALLEY

The Knik River Valley is a local’s favorite! It’s a scenic, secluded valley nestled up against the Chugach Mountains, just a short drive from downtown Palmer. This hidden gem is an adventure seeker’s delight. It features everything you dreamed Alaska would be – tall mountain peaks, wide open spaces, wilderness, rivers, glaciers and wildlife. The Knik River Valley is located off the Old Glenn Highway, with Knik River Road providing access to trails, fishing and spectacular views. Knik Glacier is the closest glacier to Anchorage, Alaska’s largest city, just an hour to the north. There are many ways to

experience Knik Glacier – on a guided ATV trip, helicopter tours including dog mushing adventures and even boat tours to the glacier.

Eklutna Tailrace is one of the Mat-Su Valley’s most popular fishing areas for all species of salmon. It typically gets the earliest run of fish in the summer. It has ample parking, and you can walk to the fishing hole with ease.

Knik River Road is a popular place to catch a glimpse of moose, as the large animals typically hang out in the many swampy areas along the route. Black bears are often spotted in this Valley as well. Don’t forget your camera!



GLACIER COUNTRY ADVENTURES

Glenn Highway National Scenic Byway	1	One of three national scenic byways in Alaska.
Reflections Lake & Palmer Hay Flats Game Refuge	2	Easy hike around the lake; moose and migratory bird views.
Knik Glacier & Knik River Valley	3	Try a boat ride, helicopter trip, ATV adventure or airplane flight over the glacier. Just an hour from Anchorage.
Alaska State Fair	4	Late August through Labor Day. Giant Cabbage Weigh-off and other giant vegetable displays, food, entertainment, fireworks and more.
Palmer Golf Course	5	Fore! Palmer Golf Course boasts mountain views at affordable rates.
Palmer Museum and Visitor Center	6	Great starting point for visitor information, Colony history, gardens and guided tours.
Musk Ox Farm and Reindeer Farm	7	See prehistoric animals on guided tours through the farm, museum and gift shop. These farms are a few miles apart, but worth the trip to see both.
Alpine Historical Park	8	Learn about the area's coal mining history, and the Ahtna Athabascan culture. Located at Mile 61.6 of the Glenn Hwy.
Raft the Matanuska or Knik Rivers	9	Guided Class IV whitewater rafting or leisure floats on scenic stretches.
Matanuska Glacier	10	Mile 101, Glenn Hwy. Drive right up to Alaska's largest road-accessible glacier. Easy guided treks and ice climbing.
Lake Louise	11	Excellent lake fishing, winter recreation and hiking opportunities. Off the Glenn Hwy. at Mile 159.8.

ATV Adventure Tours



907.745.2505
youralaskavacation.com

REVEL TREKS + TOURS

FROM MILD TO WILD

GUIDED HIKES, HISTORY TRIPS, FARMS TOURS + MORE

EDUCATIONAL, SMALL GROUP TOURS IN PALMER

907.903.1664 • info@RevelTreksAndTours.com



PALMER

Apartment/Cabin/Chalet Rentals

New Hope Suite 
8620 E New Hope St, Palmer, AK 99645
(907) 545-4444 jamesg5876@yahoo.com

Alaska Horse Adventures 
18810 E Walling Rd, Palmer, AK 99645
(907) 229-4445 akhorseadventures@gmail.com



Alaska State Fair 
www.alaskastatefair.org
2075 Glenn Hwy, Palmer, AK 99645
(800) 850-3247 (907) 745-4827 info@alaskastatefair.org
The Alaska State Fair is a non-stop, 14-day party for all Alaskans, with nightly concerts featuring some of the nation's hottest entertainers, world-famous, record-breaking giant vegetables, menus overflowing with the freshest Alaska Grown ingredients, shopping for unique, only-in-Alaska arts and crafts, and lots of attractions free with Fair admission!

Friday Flings 
PO Box 45, Palmer, AK 99645
(907) 745-2880 director@palmerchamber.org

Pyrarh's Pioneer Peak Farm 
4350 S Bodenburg Lp, Palmer, AK 99645
(907) 745-4511 pioneerpeakfarm@gmail.com

Backcountry Adventures

Alaska Backcountry Adventure Tours 
PO Box 2696/3901 S Lindsey Cir, Palmer, AK 99645
(907) 745-2505 weridealaska@gmail.com

Alaska Sundog Guiding 
1150 S Colony Way Ste 3 Box 732, Palmer, AK 99645
(907) 570-4705 aksdguiding@gmail.com

Alaska Trails 
PO Box 100627, Anchorage, AK 99510
(907) 334-8049 steve.cleary@alaska-trails.org



907-745-2927



Alaska Zipline Adventure Park 
8801 N Wolverine Rd, Palmer, AK 99645
(907) 745-2927 azap@akzipline.com

Majestic Heli Ski 
www.majesticheliski.com
16162 W Glenn Hwy, Sutton, AK 99674
(800) 559-8691 (907) 319-7885 info@majesticheliski.com

Outbound Heli Adventures 
www.outboundheli.com
3901 S Lindsey Cir Ste F, Palmer, AK 99645
(907) 351-6736 info@outboundheli.com

Revel Treks & Tours 
www.reveltreksandtours.com
Palmer, AK 99645
(907) 903-1664 info@revelak.com

Sunderland Ranch 
www.sunderlandranch.com
10856 N Wolverine Rd, Palmer, AK 99645
(907) 982-7268 info@sunderlandranch.com

Bed & Breakfast/Inn



ALASKA KNOTTY PINE B&B
(907) 232-7674

Luxurious home with 8 rooms, 7 bathrooms, sauna, jacuzzi, soaker tubs, ample wedding/event space, mountain views, with countless Alaska adventures nearby!

AlaskaKnottyPine.com

Alaska Knotty Pine Bed & Breakfast

www.alaskaknottypine.com
3525 N Clark Wolverine Rd, Palmer, AK 99645
(907) 232-7674 alaskaknottypine@gmail.com



Alaska's Harvest
Bed and Breakfast

alaskasharvest.com (907) 232-8783

Alaska's Harvest Bed & Breakfast

PO Box 2092, Palmer, AK 99645
(907) 745-4263 stay@alaskasharvest.com



OUR ALASKAN DREAM B&B
(801) 791-0576 ouralaskadream.com

Rest on our deck, watch wildlife wander by, stash your gear and set out on your Alaska adventure! Share stories at the outdoor firepit! Come home to stay awhile!

Our Alaskan Dream B&B

www.ouralaskadream.com
4504 N Heaton Rd, Palmer, AK 99645
(801) 791-0576 ouralaskadream@gmail.com

Come as strangers, leave as friends! Visit a home away from home. Relax. Watch a movie in the media room or read a book in the library. Enjoy homemade treats. Sit on the deck and watch the moose wander through the property or stash your stuff and wander off to all the adventures Alaska has to offer!

Roaming Moose Getaway B&B

Palmer, AK 99645
(717) 585-9465 albeiler@frontiernet.net

Brewery



MATANUSKA
BREWING COMPANY
PALMER, ALASKA

Lunch, Dinner, Beverages
Tasting Room open 11:30 - 8pm
(907) 745-2337

Matanuska Brewing Company
513 S Valley Way, Palmer, AK 99645
(907) 745-2337

Business Services



Cache Camper
Solutions Since 1971
RV Parts
Service
Repair
DIY?
907-745-4061
CacheCamper.com

Cache Camper Manufacturing Inc.

www.cachecamper.com
PO Box 2063, Palmer, AK 99645
(907) 745-4061 info@cachecamper.com

First National Bank Alaska

303 W Evergreen Ave, Palmer, AK 99645
(907) 746-8900

Wolf Architecture

625 S Cobb St Ste 200, Palmer, AK 99645
(907) 746-6670 info@wolfarchitecture.com

Cabin/Vacation Home

17 Mile Lake Cabins

18260 E Wishbone Pl, Palmer, AK 99645
(907) 315-0324 admin@17milelakecabins.com

Alaska Backcountry Cottages

PO Box 2696/3901 S Lindsey Cir B, Palmer, AK 99645
(907) 745-2505 reservations@alaska.global



ALASKA GLACIER
LODGE

907-759-7006 | akglacierlodge.com

Alaska Glacier Lodge

www.akglacierlodge.com
29979 E Knik River Rd, Palmer, AK 99645
(877) 745-4575 (907) 759-7006 info@akglacierlodge.com
Alaskan-owned and operated, we offer true Alaska adventures, comfortable cabins with first-class amenities, and delicious food at our on-site Raven's Perch Bar & Grill. And you're going to love our panoramic mountain views!



17 Mile Lake Cabins
Lakes & Trails
(907) 315-0324

Private cabin • Kitchenette & bathroom • WiFi • Color TV
Private deck • Mountain lake views • kayaks & lifejackets • RV parking with electric & water
hiking trails • dog friendly

Alaska Joy Mountain Getaway

Palmer, AK 99645
(907) 748-4163 sommerndnielsen84@gmail.com

Forestlane Cottages

3790 N Moffitt Rd, Palmer, AK 99645
(907) 354-3858 debach@mtaonline.net



GLACIER BREEZE
www.theglacierbreeze.com

Glacier Breeze Cabin

Knik River Rd, Mile 9, Palmer, AK 99645
(706) 525-9914 theglacierbreeze@gmail.com



GLACIER SUITES
PALMER, ALASKA'S MOST COMFORTABLE VACATION HOMES
Book Now GLACIERSUITES.COM
(907) 707-4687

Private, Pet-Friendly & Energy-Efficient ICF Vacation Rentals, All Conveniently Located In The Heart Of The Matanuska Valley

Glacier Suites

www.glaciersuites.com
Palmer, AK 99645
admin@glaciersuites.com

Palmer's most energy-efficient vacation homes and executive suites.

Hana-Paw Ranch

3250 N Clark Wolverine Rd, Palmer, AK 99645
(307) 760-9564 kshannonp@yahoo.com



HATCHER PASS CABINS
WWW.HPCABINS.COM | (907) 745-6788

Hatcher Pass Cabins

9000 N Palmer-Fishhook Rd, Palmer, AK 99645
(907) 745-6788 stay@hpcabins.com

Hyer Mountain Vista & Little Susitna Hideaway

Palmer, AK 99654
(907) 310-1462 mahlerenterprises@gmail.com

Peak Lodging

6787 E Aslan Cir, Palmer, AK 99645
(907) 414-7442 anjsteer@gmail.com

Wild Habitat LLC

Palmer, AK 99645
(907) 707-4110 kelly@wildhabitataska.com

Campground/RV Park

Fox Run Lodge, RV Campground & Restaurant

4466 S Glenn Hwy, Palmer, AK 99645
(907) 355-8641



KEPLER PARK
E Kepler Dr
Mi 37.4 Glenn Hwy
745-3053
www.keplerpark.us
CAMPING - BOAT RENTALS - FISHING

Kepler Park

E Kepler Dr, Mi 37.4 Glenn Hwy, Palmer, AK 99645
(907) 745-3053 keplerpark@gmail.com

Palmer/Anchorage North KOA

2010 S Church St, Palmer, AK 99645
(907) 745-7445 palmerkoa1@gmail.com

Dining

Colony Kitchen / Noisy Goose Cafe

www.noisygoosecafe.com
1890 Glenn Hwy, Palmer, AK 99645
(907) 746-4600



turkey Red LLC
CAFE BAKERY
BEER & WINE
907-746-5544
turkeyredak.com

Turkey Red

550 S Alaska St Ste 100, Palmer, AK 99645
(907) 746-5544 turkeyredak@gmail.com

Turkey Red serves fresh, high quality ingredients prepared in traditional ways with care and creativity. We serve breakfast, lunch, and dinner, Tuesday through Saturday. We have fresh breads, pastries and pizza baked in our stone hearth oven as well as steak, Alaska seafood, espresso, teas, craft beer, and fine wine. We also use Alaska Grown produce!

BUCKET LIST  **See it all by Helicopter**

- GLACIER LANDINGS
- HELI PACKRAFTING
- GLACIER ICE CLIMBING
- GLACIER PADDLE BOARDING

Premier Glacier Dog Sled Tours with the Dallas Seavey Kennel




Open All Year
Hotel transfers available

ALASKA
HELICOPTER TOURS

Book Now at **907.272.7777**



The Pioneer Motel
YOU & MAT-SU
We're here for it.



(907) 745-3425 **www.thepionermotel.com**
YOUR MAT-SU ADVENTURE BASECAMP

FRIENDLY LOCALLY OWNED LODGING
SPARKLING CLEAN AND COMFORTABLE ROOMS
SPACIOUS CABIN SUITES WITH KITCHENETTES
EASY ACCESS TO GLACIER TOURS, FLIGHT SEEING TOURS & SNOWMACHINE TRAILS
CONVENIENT LOCATION NEAR SHOPPING, RESTAURANTS & PALMER'S CITY CENTER





NASCAR & DRAG RACING




MEMBER NHRA TRACK

Alaska Raceway PARK
FAMILY FUN ENTERTAINMENT

NASCAR Advance Auto Parts WEEKLY SERIES




5599 S. Race Way Palmer | raceak.com





The
Historic Valley Hotel
For A Friendly Alaskan Welcome

606 S. Alaska Street
Palmer, AK 99645

907-745-3330

www.akvalleyhotel.com

Open Cafe - Open 24/7 • Caboose Lounge • Iron Horse Liquor Store

Entertainment

Alaska Raceway Park

www.raceak.com
5599 S Race Way, Palmer, AK 99645
(907) 746-7223 info@raceak.com

Flightseeing

Alaska Helicopter Tours

www.alaskahelicoptertours.com
29979 E Knik River Rd, Palmer, AK 99645
(800) 469-0177 (907) 272-7777 info@alaskahelicoptertours.com
Helicopter flightseeing adventures including glacier landings, glacier dog sledding, paddle boarding, ice climbing, hiking and more, departing from Alaska Glacier Lodge in Palmer, with round-trip shuttle service available from Anchorage. New seasonal summer tours departing May through September from Seward, including glacier dog sledding tours in partnership with 6-time Iditarod Champion, Dallas Seavey.

Outbound Heli Adventures

www.outboundheli.com
3901 S Lindsey Cir Ste F, Palmer, AK 99645
(907) 351-6736 info@outboundheli.com

Golf Resorts

Palmer Golf Course

1000 Lepak Dr, Palmer, AK 99645
(907) 745-4653 eagle@palmergolf.com

Hotel/Motel/Resort

Colony Inn

Box 118, Palmer, AK 99645
(800) 478-7666 (907) 745-3330
www.akcolonyinn.com Book direct and save!

The Pioneer Motel

124 W Arctic Ave, Palmer, AK 99645
(907) 745-3425 manager@thepionermotel.com

Valley Hotel

606 S Alaska St, Palmer, AK 99645
(800) 478-7666 (907) 745-3330
www.akvalleyhotel.com Book direct and save!
We have it all. Historic hotel, 43 clean and affordable rooms, open 24/7 365 days. 24-hour cafe, excellent food, bar and grill, 21-hour liquor store, laundry facilities, phones and cable.

Colony Inn

325 E. Elmwood
Palmer, AK 99645

907-745-3330

www.akcolonyinn.com



Convenient Location • Free Wi-Fi • Great Room and Sitting Areas • Coffee Bar Upstairs

Land/Wildlife Conservation



MUSK OX FARM

MUSKOXFARM.ORG



Musk Ox Farm ❄️
12850 Archie Rd, Palmer, AK 99645
(907) 745-4151 info@muskoxfarm.org
Visit the nonprofit Musk Ox Farm. Gentle, low-stress animal handling has guided this nonprofit for over 60 years raising musk oxen for their incredible underwool-qiviut. Gently hand-combed qiviut is eight times warmer than wool and softer than cashmere. Visit our brand-new world class educational center too! Huge pull-through parking for all size rigs. Open year round. Call or visit www.muskoxfarm.org.

Sightseeing/Custom/Package Tours

Alaska Farm Tours ●
Palmer, AK 99645
(907) 519-7067 info@alaskafarmtours.com

Visitor Center/Chamber/Gov't Agency

Mat-Su CHARR ❄️
PO Box 3910, Palmer, AK 99645
(907) 830-1858 matsucharr@gmail.com

Mat-Su Convention & Visitors Bureau ❄️
www.alaskavisit.com
610 S Bailey St Ste 201, Palmer, AK 99645
(907) 746-5000 info@alaskavisit.com
Whether it's mountains and glaciers, gold mines and history, or wildlife and wilderness, the Mat-Su Valley has everything on your Alaska bucket list. Let us help you plan an unforgettable multiple day visit to the heart of Alaska. Visit our website or find us on Facebook at "Visit Alaska's Mat-Su Valley."



HISTORY & ART

Guided
Tours

Showcase
Gardens

Day
Planning

Concierge
Info

**PALMER
MUSEUM**

Open Daily 9AM-6PM May-Sept.

palmermuseum.org • 907-746-7668

Palmer Museum & Visitor Center ❄️
723 S Valley Way, Palmer, AK 99645
(907) 746-7668 museuminfo@palmermuseum.org
The Palmer Museum & Visitor Center is located in a rustic log cabin in downtown Palmer. View historic collections and local art inside, and a beautiful showcase garden outside. Open year-round.

SUTTON

Attraction or Event

Alpine Historical Park ●
61.5 Glenn Hwy, Sutton, AK 99674
(907) 745-7000 info@alpinehistoricalpark.org

MATANUSKA GLACIER AREA

Attraction or Event

Glacier Park ❄️
66500 S Glacier Park Rd, Sutton, AK 99674
(907) 745-2534 (907) 232-9046
matanuskaglacierpark@gmail.com



mica GUIDES

Start Your Adventure

Glacier Tours | Zipline | Heli Adventures | ATV Tours | Luxury Camping

(907) 351-7587 MICAGUIDES.COM

MICA Guides ●
www.micaguides.com
200 W 34th Avenue #82, Anchorage, AK 99503
(907) 351-7587 info@micaguides.com
Guided glacier hiking and ice climbing on the spectacular Matanuska Glacier. Helicopter tours with glacier landings, scenic flights and the fastest zipline in Alaska. No experience necessary.

Backcountry Adventures

AK Mountain Tours ❄️
17701 W Glenn Hwy, Mi 113.5, Sutton, AK 99674
(877) 645-5121 (907) 745-5121 info@sheepmountain.com
See our ad on the inside back cover!

Alaska Backcountry Adventure Tours ❄️
PO Box 2696/3901 S Lindsey Cir, Palmer, AK 99645
(907) 745-2505 weridealaska@gmail.com



RIVER
RAFTING

GLACIER
TOURS

HELI
ADVENTURE

nova
Alaska Guides

www.novalaska.com
907-745-5753

NOVA Alaska Guides ●
www.novalaska.com
PO Box 1129, Chickaloon, AK 99674
(907) 745-5753 info@nova-alaska.com



GLACIER COUNTRY



ON THE
MATANUSKA

OPEN YEAR ROUND
2-HOURS FROM ANCHORAGE
ON SCENIC BYWAY

glacier-tours.com

Call 907-745-2534 | Text 907-232-9046

66500 S. Glacier Park Rd
Sutton, AK 99674 | Mile 102 Glenn Hwy



Bed & Breakfast/Inn



ALPENGLOW LUXURY CAMPING

An Alaska glamping experience at the Matanuska Glacier!
Breathtaking glacier and mountain views,
hot tub and showers, a cozy fire pit, and
complimentary breakfast!

Visit alpenglowluxurycamping.com



Alpenglow Luxury Camping, LLC ●
www.alpenglowluxurycamping.com
Mile Post 102.5 Glenn Hwy, Glacier View, AK 99674
(330) 314-3633 info@alpenglowluxurycamping.com
Canvas glamping tent with views of the Matanuska Glacier. Complimentary hot Alaska breakfast. Hot tub in the evenings, showers, flushing toilets, and common area with games and fire pit.

Boat Excursions



RIVER
RAFTING

GLACIER
TOURS

HELI
ADVENTURE

nova
Alaska Guides

www.novalaska.com
907-745-5753

NOVA Alaska Guides ●
PO Box 1129, Chickaloon, AK 99674
(907) 745-5753 info@nova-alaska.com

Campground/RV Park

Slide Mountain Cabins & RV Park ●
Mile 135 Glenn Hwy, Glennallen, AK 99588
(907) 822-3883 slidemountaincabins@gmail.com



MAJESTIC VALLEY WILDERNESS LODGE

21 Unique Rooms: Choose from budget-friendly options or indulge in luxurious suites.
 Delicious Gourmet Meals: Savor every bite with our chef-prepared dishes.
 Breathtaking Views: Immerse yourself in stunning, peaceful surroundings.
 Special Occasions: Ideal for weddings, retreats, and group events.

Book now and experience the magic of Majestic Valley Lodge!

MajesticValleyLodge.com / (907) 746-2930
 Mile 114.9 Glenn Highway, Alaska

Dining

GRAND VIEW CAFE & RV PARK



CALL (907) 746-4480 GrandViewRV.com

Grand View Cafe & RV Campground ● ❄️
 22488 W Glenn Hwy, Glacier View, AK 99674
 (907) 746-4480 info@grandviewrv.com

Long Rifle Lodge ● ❄️
 31406 W Glenn Hwy, Sutton, AK 99674
 (800) 770-5151 (907) 745-5151 irl@matnet.com

Flightseeing

Sheep Mountain Air ● ❄️
 17701 W Glenn Hwy, Mi 113.5, Sutton, AK 99674
 (877) 645-5121 (907) 745-5121 info@sheepmountain.com
 See our ad on the inside back cover!

Hotel/Motel/Resort

Sheep Mountain Lodge ● ❄️
 17701 W Glenn Hwy, Mi 113.5, Sutton, AK 99674
 (877) 645-5121 (907) 745-5121 info@sheepmountain.com
 See our ad on the inside back cover!

Wilderness Lodge

Majestic Valley Wilderness Lodge ● ❄️
www.majesticvalleylodge.com
 16162 W Glenn Hwy, Sutton, AK 99674
 (907) 746-2930 info@majesticvalleylodge.com

LAKE LOUISE

Wilderness Lodge

Lake Louise Lodge



Lodging, activities, & events year round!
 Call (907) 822-3311 or visit LakeLouiseLodge.com

Lake Louise Lodge ●
 25600 Lake Louise Rd, Mile 161, Glennallen, AK 99588
 (907) 822-3311 lakelouiselodgeak@gmail.com

Lake Louise Fish Guides

Reel 'em in!
 Catch trophy fish with a
 local experienced angler!
 Call (907) 822-3311



GOLD RUSH COUNTRY

Hatcher Pass is Alaska's finest backcountry playground, with granite mountains, glacial-carved valleys and alpine vegetation. It is a sight to behold.

HATCHER PASS

Just 1.5 hours from Anchorage, Hatcher Pass is a favorite among Alaskans. The area is home to Independence Mine State Historical Park, but also features a wealth of year-round multi-use trails and limitless alpine terrain. Hike, bike or snowmobile. Some hot spots include Reed Lakes, Craigie Creek, Gold Mint and Gold Cord trails. The area offers world-class hiking with breathtaking views of the valley below. With the headwaters of the Little Susitna River originating here, avid kayakers will find the excitement of Class V whitewater appealing.

Winter sports enthusiasts flock to Hatcher Pass. Skeetawk, the Mat-Su Valley's first-ever lift access downhill skiing area, operates Thursday through Sunday. The Government Peak Recreation Area, at the base of Hatcher Pass, offers over 24 kilometers of Nordic skiing trails designed by a former Olympian. Snowmobiling is permitted in designated areas and is very popular west of the pass.





INDEPENDENCE MINE

Once a bustling mining camp, Independence Mine is now on the National Register of Historic Places. You can wander amid the preserved ruins. Independence Mine covers 271 acres and includes restored structures and interpretive displays connected by easily accessible, paved walking paths. Several historic buildings are open to the public, and daily guided tours of the park area and gold panning demonstrations are available from June through September.

GOLD FEVER!

Gold played a pivotal role in establishing many of Alaska's communities, including Hatcher Pass. One of the first discoveries in the Mat-Su happened in 1896 by Robert Lee Hatcher. In 1941, with 83 mining claims, the Alaska-Pacific Consolidated Mining Co. was the largest producer in the mining district, employing more than 200 workers, opening nearly a dozen miles of tunnels, and producing more than 34,000 ounces of gold. Today you can catch a glimpse of what mining was like at the Independence Mine State Historical Park located in Hatcher Pass. Grab your gold pan and see if you have the same luck.



GOLD RUSH COUNTRY ADVENTURES

Little Susitna River	1	Along Hatcher Pass Road from Mile 7-15. Watch for wildlife and pan for gold.
Archangel Valley/ Reed Lakes	2	Mile 16 Hatcher Pass Road. Hiking, mountain biking, rock climbing and winter sports.
Lodges	3	Premium meals, lodging, seasonal amenities, event venues.
Independence Mine State Historical Park	4	Gold! Mile 18 Hatcher Pass Road. Open daily June through Sept. Guided tours available in the summer.
Summit Lake Recreation Area	5	Mile 19 Hatcher Pass Road. Berry picking, ridgetop hiking. Pass road opens around July 4th until first snow.
Summer Recreation		Hiking, berry picking, recreational gold panning, mountain biking.
Winter Recreation		Cross-country and backcountry skiing, Skeetawk downhill ski area, Government Peak Nordic trails, sledding.



WHERE TO GO; WHAT TO DO

- Pick blueberries in the alpine fields or photograph spectacular wildflowers. Berry picking is at its peak in late summer and early fall.
- Deep snow and treeless slopes provide perfect terrain for backcountry winter enthusiasts on both sides of Hatcher Pass. The northern lights are best viewed here.
- Explore abandoned buildings and machinery from a 200-worker camp and gold mining operation, one of Alaska's biggest gold producers until World War II.

MAT-SU EVENTS

MARKETS, FESTIVALS, RACES, DERBIES, CELEBRATIONS

FARMER’S MARKETS

Wasilla/Houston/Willow/Talkeetna/Palmer

Purchase Alaska Grown produce, flowers and crafts at one of the Valley's weekly markets throughout the summer months, including Friday Flings in downtown Palmer.

MAT-SU HAWKWATCH

Glenn Highway, Glacier View area

Hawkwatch International's northernmost migratory raptor count takes place at Gunsight Mountain from Mid-March to late-April, Mile 120 Glenn Highway. www.matsubirders.org.

PALMER COLONY DAYS

A festival honoring the 1935 Colonists who started the Matanuska farming community. Events include a car rally, parade, craft fairs, farmers market, carnival rides, fun run, parade and live entertainment. Second weekend in June annually. (907) 745-2880.

www.palmerchamber.org.

HOUSTON FOUNDER’S DAY

Live band, free barbecue, fireworks and more. Third Saturday in August. (907) 892-6869.

ALASKA STATE FAIR

Alaska's largest event combines delicious food booths, legendary giant vegetables and nonstop entertainment for the whole family. Fourteen days of fair fun over three weekends (closed Tuesdays and Wednesdays) ending on Labor Day. (800) 850-FAIR www.alaskastatefair.org.



HATCHER PASS AREA

Attraction or Event

Independence Mine State Historical Park

www.salmonberrytours.com
23264 Gold Cord Rd, Palmer, AK 99645
(907) 278-3572 reservations@salmonberrytours.com

Backcountry Adventures

Skeetawk Ski Area

13500 N Skeetawk Cir, Palmer, AK 99645
(907) 746-7277 info@skeetawk.com

Cabin/Vacation Home



Hatcher Pass Cabins

9000 N Palmer-Fishhook Rd, Palmer, AK 99645
(907) 745-6788 stay@hpcabins.com

Hotel/Motel/Resort

Meier Lake

6059 Wasilla Fishhook Rd, Wasilla, AK 99654
(907) 315-9760 info@meierlake.com

Wilderness Lodge

Snowhook Lodge & Cabins on Hatcher Pass

7201 Willow Fishhook Rd, Willow, AK 99688
(907) 414-4547 snowhookkennel@gmail.com



Between stands of birch, aspen and spruce, scores of glacier-carved lakes dominate the region. If water is your element, then Lake Country is your destination.

WASILLA

Nestled between Lake Lucille and Wasilla Lake, Wasilla is a bustling community that is home to the world-famous Iditarod Trail Sled Dog Race headquarters.

Wasilla is the largest city in the Mat-Su Valley and is a hub of commerce, as a variety of national and local retailers can be found. Fresh produce is available weekly at a farmers' market.

Wasilla was originally founded to be a supply crossroads for gold mines at Willow Creek Mining District. The Alaska Railroad built lines through the town to Fairbanks in 1917, providing an immediate “boom” to the area. Today, Wasilla remains one of the fastest-growing communities in Alaska.





BIG LAKE

With 67 miles of shoreline, the size of this lake is downright remarkable. Big Lake is a local favorite because of its many recreational opportunities, both in summer and winter. Boating, fishing and riding personal watercraft highlight summer activities. In the winter, the frozen lake allows for Alaska activities such as snowmobiling, dog mushing and cross-country skiing. Terrific views north, east and west toward the towering Alaska and Talkeetna ranges abound. Camp under the midnight sun or stay and dine at one of several area lodges and bed-and-breakfasts.

HOUSTON

Located on the banks of the Little Susitna River along the Parks Highway, this colorful town offers a gentle river to float with great salmon fishing. In the winter, come back and give a snowmobile or sled dog tour a go to feel the crisp air as you zip through the countryside blanketed with pristine snow.



WHERE TO GO; WHAT TO DO

- Learn about the Iditarod Trail Sled Dog Race and take a dog sled ride at Iditarod Trail Headquarters.
- Step back in time at the Wasilla Museum, where some of the original townsite has been restored.
- The Museum of Alaska Transportation & Industry is filled with exhibits, planes, railroad cars and vintage automobiles.

LAKE COUNTRY ADVENTURES

Wasilla Area Lakes	1	Fish, ride personal watercraft and bird-watch at Lake Lucille, Wasilla Lake and more just off the Parks Hwy.
Wasilla Museum	2	Variety of exhibits showcasing the area's trading post history and original town buildings. Self-guided tours available.
Iditarod Headquarters	3	Mile 2.2 Knik-Goose Bay Rd. Museum, gift shop, summer dog sled rides.
Museum of Transportation & Industry	4	Home to Alaska's transportation and industrial relics. Airplanes, trains, steam engines and more.
Big Lake	5	Haven for boating and snowmobiling - year-round recreation. Campgrounds and lodging available.
Settlers Bay Golf Course	6	Tee off under the Midnight Sun, with fantastic views of the Chugach Mountains and the best putting greens in Alaska.
Knik Museum & Townsite	7	Mile 13.9 Knik-Goose Bay Rd. Built in 1910, is now a museum and holds the Musher's Hall of Fame.
Little Su River & Lakes	8	Excellent salmon fishing in the summer and ice fishing in the winter.
Susitna River Drainage	9	Salmon and trout fishing Guided fishing trips available. Canoeing and camping.

LAKE COUNTRY

Get Hooked!

MAT-SU: FISH-ON!

The Mat-Su Valley has several thousand miles of fishable rivers, streams and lakes. Best of all, our fishing is accessible – bank-side off the road, by air taxi to remote spots or contact one of our local expert fishing guides.

WHAT TO PACK

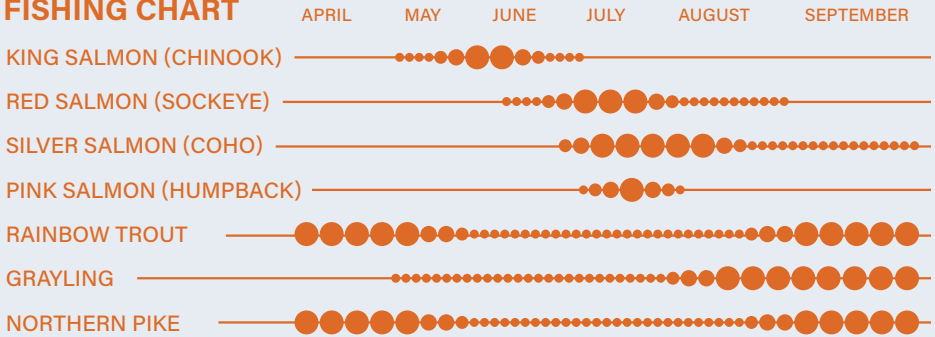
- WADERS
- TACKLE BOX
- FILLET KNIFE
- FISH STORY



The Susitna River drainage has several small creeks and tributaries that are easily accessible via the Parks Highway (Hwy. 3) and feature salmon as well as rainbow trout, grayling and pike. At many of these places, you can walk right up to a fishing hole. Spirited silver salmon run strong in the drainage in mid- to late-summer. In the fall, rainbow trout fishing is exceptional. Make sure you check local regulations before heading out and purchase a fishing license. Use the chart below to gauge when the fish will be running.



FISHING CHART



Lighthouse Island Alaska Airbnb

A one-of-a-kind island lodging experience! Amenities include an on-site host, complementary water taxi, outdoor fire pit, pet friendly, multiple cabins, and 360° of unbeatable views!

(907) 240-7334
or find us online!



WASILLA

Apartment/Cabin/Chalet Rentals

Lighthouse Island Alaska Airbnb ●❄️
4856 E Birch Dr, Wasilla, AK 99654
(907) 240-7334

Attraction or Event

Iditarod Trail Sled Dog Race ●❄️
2100 S Knik-Goose Bay Rd, Wasilla, AK 99654
(907) 376-5155 x-108

Knik Museum & Musher Hall of Fame ●❄️
Mile 13.9 Knik-Goose Bay Rd, Wasilla, AK 99654
(907) 376-7755 wkhsociety@yahoo.com

Museum of Alaska Transportation & Industry ●❄️
www.museumofalaska.org
3800 W Museum Dr, Wasilla, AK 99654
(907) 376-1211 mati@mtaonline.net

Wasilla Museum & Visitor Center ●❄️
www.cityofwasilla.gov/museum
391 N Main St, Wasilla, AK 99654
(907) 373-9071 museum@cityofwasilla.gov

The Wasilla Museum and Visitor Center offers maps, brochures and information about local activities, events and attractions. Open Tuesdays - Fridays from 10 am to 3 pm. Digital info available upon request.

Bed & Breakfast/Inn

Alaska's Lake Lucille Bed & Breakfast ●❄️
South Shore of Lake Lucille, Wasilla, AK 99687
(888) 353-0352 (907) 357-0352

Lady Gray Bed & Breakfast ●❄️
www.ladygraybnb.com
1151 E Glenwood Ave, Wasilla, AK 99654
(907) 355-8454 ladygray@mtaonline.net



Pioneer Ridge B&B Inn ●❄️
2221 S Yukon Cir, Wasilla, AK 99654
(907) 376-7472 info@pioneeridge.com

Renovated from a former cattle barn, this 5-room/1-suite bed and breakfast offers early Alaska memorabilia and a full hot breakfast for your enjoyment. Reserve at www.pioneeridge.com.

Brewery

Bearpaw River Brewing Company ●❄️
240 E Railroad Ave, Wasilla, AK 99654
(907) 373-2337 info@bearpawriverbrewing.com

The Last Frontier Brewing Company ●❄️
238 N Boundary St, Wasilla, AK 99654
(907) 357-7200 lfbrew58@gmail.com

Business Services

Klapperich & Associates LLC ●❄️
2951 N Earl Dr, Wasilla, AK 99654
(907) 355-9970 johnk@mtaonline.net

Cabin/Vacation Home

Alaska Vacation Rentals & Cabins ●❄️
Wasilla, AK 99654
(907) 313-0103 office@akvacationrentals.com


Alaskan Hillside Cabins ●❄️
2850 W Schrock Rd, Wasilla, AK 99687
(800) 770-3650 (907) 373-0405

Lakeside Scandinavian Farmhouse ●❄️
Wasilla, AK 99687
(907) 351-8649 susanderrera@gmail.com

The Abelar - A Private Lakeside Haven ●❄️
Wasilla, AK 99654
(907) 947-6186 shuree.cerda@gmail.com

Campground/RV Park

Palmer/Anchorage North KOA ●❄️
2010 S Church St, Palmer, AK 99645
(907) 745-7445 palmerkoa1@gmail.com



Settlers Bay Golf Course ●❄️
7307 S Frontier Dr, Wasilla, AK 99654
(907) 376-5466 customerservice@settlersbay.com

Dining

Chop House at Lake Lucille ●❄️
1300 W Lake Lucille Drive, Wasilla, AK 99654
(907) 373-1776 contact@chophouseak.com

E Lu Fa ●❄️
1875 E Palmer-Wasilla Hwy, Wasilla, AK 99654
(907) 357-1368

Everett's Fine Dining, Bar & Bistro ●❄️
1850 E Bogard Rd, Wasilla, AK 99654
(907) 357-5000 info@mat-suresort.com

Settlers Bay Lodge ●❄️
5801 S Knik Goose Bay Rd, Wasilla, AK 99623
(907) 357-5678 contact@settlersbaylodge.com



A TASTE OF SUMMER ALBATROSS

WHERE ARTISANAL FOOD IS COMPLEMENTED BY LOCAL BREWS, SPIRITS AND GREAT VIEWS

OPEN SEASONALLY
APRIL - SEPTEMBER
11 AM - 9 PM
WWW.SETTLERSBAY.COM
(907) 376 5822
7307 S. FRONTIER DR. SETTLERS BAY ALASKA

The Albatross at Settlers Bay Golf Course ●❄️
7307 S Frontier Dr, Wasilla, AK 99654
(907) 376-5833 customerservice@settlersbay.com

The Grape Tap ●❄️
322 N Boundary St, Wasilla, AK 99654
(907) 376-8466 graptetapak@gmail.com

Fishing

Come Fish Alaska Salmon!

DESKHA Landing Charters & Lodge ●❄️
(907) 495-5873
Half Day Guided Fishing Charters
ALL INCLUSIVE PACKAGES
Guided Fishing, Lodging, Meals
Book online: www.Deshka.com



Deshka Landing Charters & Lodge ●❄️
www.deshka.com
11745 N Recreation St, Willow, AK 99688
(907) 495-5873 jim@deshka.com

Salmon Fishing at it's best!

Fishtale River Guides
www.fish4salmon.com
907 746-2199



Fishtale River Guides ●❄️
PO Box 155, Palmer, AK 99645
(907) 746-2199 fishing@fish4salmon.com

Alaska Fishing Guides charter to Little Susitna and Deshka River salmon fishing. Helpful instruction, quality tackle, roomy boats, fish filleting provided. Fun winter ice fishing trips to Mat-Su Valley lakes near Palmer, Wasilla, and Anchorage. Visit www.fish4salmon.com for free fishing reports, pictures, information, and map. Catch your Alaska fishing dream!

Miller's Riverboat Service ●❄️
www.millersriverboat.com
4150 Wickersham Way, Wasilla, AK 99654
(908) 892-6872 fish@millersriverboat.com



Golf Resorts



Settlers Bay Golf Course ❄️
7307 S Frontier Dr, Wasilla, AK 99654
(907) 376-5466 customerservice@settlersbay.com

Hotel/Motel/Resort

Alaska's Select Inn Motel ❄️
3451 E Palmdale Dr, Wasilla, AK 99654
(888) 357-4768 (907) 357-4768 info@alaskaselectinn.com

Best Western Lake Lucille Inn ❄️
1300 W Lake Lucille Dr, Wasilla, AK 99654
(800) 897-1776 (907) 373-1776
bestwesternlakelucilleinn@outlook.com

Mat-Su Resort ❄️
1850 E Bogard Rd, Wasilla, AK 99654
(907) 357-5000 info@mat-suresort.com

Outfitters/Galleries/Gift Shops

Gold Rush Jewelers ❄️
212 N Boundary St, Wasilla, AK 99654
(800) 770-3650 (907) 376-4912 goldrushak@gmail.com

Legacy Clock Tower, LLC ❄️
436 N Main St, Wasilla, AK 99645
(907) 373-8726 theclocktowermanager@gmail.com



Sylvia's Quilt Depot ❄️
www.sylviasquiltdepot.com
1261 Seward Meridian Rd Ste E, Wasilla, AK 99654
(907) 376-6468 sylvia@sylviasquiltdepot.com

Rail



Alaska Railroad ❄️
PO Box 107500, Anchorage, AK 99510
(800) 544-0552 (907) 265-2494 reservations@akrr.com
Since 1923, the Alaska Railroad has connected Alaska's most popular destinations: Anchorage, Denali, Seward, Fairbanks, Talkeetna and more. Take advantage of daily summer service to see glaciers, mountains, wildlife and incredible views from our comfortable railcars (ask about our premium GoldStar Service). Ideal for day trips or travel packages; open year-round.

Sightseeing/Custom/Package Tours



Adventures by True North AK ❄️
3530 N Calder Rd, Wasilla, AK 99654
(907) 691-8909 reservations@adventurealaska.net

Visitor Center/Chamber/Gov't Agency

Greater Wasilla Chamber of Commerce ❄️
1155 E Depot Rd, Wasilla, AK 99654
(907) 376-1299 contact@wasillachamber.org



Wasilla Museum & Visitor Center ❄️
391 N Main St, Wasilla, AK 99654
(907) 373-9071 museum@cityofwasilla.gov

Wilderness Lodge

Deshka Landing Charters & Lodge ❄️
www.deshka.com
11745 N Recreation St, Willow, AK 99688
(907) 495-5873 jim@deshka.com

BIG LAKE

Apartment/Cabin/Chalet Rentals

Big Lake Adventure Cabins ❄️
2890 S Buoyant Dr, Big Lake, AK 99652
(907) 947-9601 blbr@mtaonline.net

Long Lake Chalet ❄️
Big Lake, AK 99652
(206) 902-7161 longlakechalet@yahoo.com

Boat Excursions

Big Lake Boat Rentals ❄️
2890 S Buoyant Dr, Big Lake, AK 99652
(907) 947-9601 blbr@mtaonline.net

Long Lake Chalet

2 Bedrooms / 1 Bath
Lake-Front Rental

Contact us for more info:
(206) 902-7161
Longlakechalet@yahoo.com



Cabin/Vacation Home

Aurora Lights Cabins ❄️
www.airbnb.com/users/show/298352869
PO Box 521762, Big Lake, AK 99652
(907) 232-5361 auroralightscabins@gmail.com



Blue Lantern Lodge at Big Lake ❄️
5682 S Big Lake Rd, Wasilla, AK 99645
(907) 227-3439 khansmeier@yahoo.com

Dog Sledding

Alaska Mushing School ❄️
Big Lake/Willow, AK 99676
(907) 531-5990 mushingschool@gmail.com

Martin Buser's Happy Trails Kennel ❄️
19391 W Lakes Blvd, Big Lake, AK 99652
(907) 892-7899 martin@buserdog.com

HOUSTON

Bed & Breakfast/Inn

Kingom Cabinz ❄️
www.kingdomcabinz.com
17514 W Parks Hwy, Houston, AK 99623
(406) 231-5847 kingdomcabinz@gmail.com

Book with us
today!



Education



RVing To Alaska ❄️
www.rvingtoalaska.com
PO Box 940332, Houston, AK 99694
(907) 521-8282 support@rvingtoalaska.com
A free online RV community to learn and travel together.

Entertainment

Gorilla Fireworks ❄️
PO Box 871906, Wasilla, AK 99687
(907) 892-6557



DENALI

COUNTRY

The highest point in North America, Denali – elevation 20,310' – dominates the region south of Denali National Park.

TOWERING PEAKS, ABUNDANT WILDLIFE, ICONIC TOWNS

WILLOW

The first grand views of Denali are along the Parks Highway (Hwy. 3) on the way to Willow. While you're there, take advantage of the campgrounds, fishing streams, snowmobile trails and dog mushing tours (yes, even in the summer). Paddle the Nancy Lake State Recreation Area canoe trail and spend a night in a public-use cabin. This area is very popular among locals for the many outdoor recreational opportunities.

TALKEETNA

Talkeetna has a unique vibe all its own. This small town is the staging area for the more than 1,000 climbers who attempt to climb Denali each spring. On average, only 50 percent of them make the summit. In May and June, you can spot climbers milling around town. The first successful summit of Denali was June 7, 1913 by a party led by Hudson Stuck. Alaska Native Walter Harper became the first to reach the summit in that party, and the Walter Harper Talkeetna Ranger Station bears his name today. They ascended via the Muldrow Glacier route, which is still a popular route. Located at the confluence of three major rivers, Talkeetna keeps its mining history alive with renovated miners' cabins used as lodging, shops and restaurants. Here you'll find one of Alaska's top breweries, a number of great restaurants and shops that sell goods made by local artists.

The rivers also lend to a multitude of activities such as guided river rafting, boat tours and sport fishing. The Alaska Railroad stops daily in the summer and weekly in winter. Spend a day perusing the many shops that feature local artisans. Flightseeing trips around Denali are spectacular, and depart from Talkeetna daily.

TRAPPER CREEK/PETERSVILLE

Petersville Road extends nearly 35 miles from Trapper Creek into the Dutch Hills, offering spectacular views of Denali. The rugged, scenic gravel road is ideal for mountain biking or snowmobiling in the winter. (In the summer, 4-wheel drive vehicles are recommended after first 10 miles.)

DENALI STATE PARK

Adjacent to Denali National Park, this 325,000-acre wildland boasts stunning and accessible recreational opportunities. Whether camping here or just stopping for the view, don't miss this gem of the Alaska State Parks system. Camp, canoe and explore amidst stunning views of Denali from the ridgeline or from Byers Lake. While Denali National Park & Preserve offers the wilderness and wildlife experience, don't miss Denali State Park for the ultimate scenic Denali experience. K'esugi Ken Campground is located at Mile 135.4 Parks Highway (Hwy. 3) and has an easy .5-mile hike to a spectacular Denali overlook. With RV and tent sites as well an interpretive center and public-use cabins, the campground is a popular spot for those looking for peace and quiet away from the crowds.



WHERE TO GO; WHAT TO DO

- Rent a kayak or canoe on Byers Lake and paddle to schools of spawning red salmon. Watch for swans, loons and feeding bears.
- Take a flightseeing trip around Denali, and land on a glacier high in the Alaska Range. Most visitors rank this as their most impressive Alaska experience.
- Explore the rivers with a jet boat or rafting trip.
- Come back this winter for the restart of the world-famous Iditarod Trail Sled Dog Race.
- Learn about the area's Denali climbing history at the Walter Harper Talkeetna Ranger Station.



DENALI COUNTRY ADVENTURES

Nancy Lake Recreation Area	1	Mile 67.2 Parks Hwy. 130 interconnected lakes. Lynx Lake Canoe Trail. Link to canoe rental information at www.alaskavisit.com
Dog Sledding	2	Mush your own team of huskies, ride the runners or sit in the sled.
Talkeetna Historic District	3	Historic walking tour – museum, log cabins, school, roadhouse, inn and other mining-era structures dating to 1916. Food, tours, lodging and shopping. Year-round Alaska Railroad stop.
Petersville Road	4	Mile 114.8 Parks Hwy. 35-mile road has great biking, hiking, and fishing.
Susitna, Chulitna, Talkeetna Rivers	5	Boat, camp, fish and explore these glacial rivers. Guided tours, rafting and fishing available.
Denali State Park	6	See Denali and visit the Veterans Memorial or stay at the Kesugi Ken Campground. Camping, kayaking, fishing and nature walks. Access to Kesugi and Curry Ridge trailheads.
Denali	7	Flightsee the Alaska Range and view glaciers, sheer rock faces, rivers and wildlife.

WILLOW

Backcountry Adventures

Fishtale River Guides

www.fish4salmon.com

PO Box 155, Palmer, AK 99645
(907) 746-2199 fishing@fish4salmon.com

Hatcher Pass Castle ATV Tours

6595 Willow Fishhook Rd, Willow, AK 99688
(907) 250-5419 hatcherpasstour@gmail.com

Susitna Air Service LLC

23901 W Willow Haven Cir, Willow, AK 99688
(907) 301-4399 flying@susitnaair.com

Tippecanoe

Nancy Lake State Recreation Area, Willow, AK 99688
(907) 355-6687 paddleak@mtaonline.net

Conference Centers/Meeting Facilities

Willow Area Community Center

23557 W Willow Community Center Cir, Willow, AK 99688
(907) 495-6633

Dog Sledding

Alaskan Husky Adventures

www.akhusky.dog

18408 W Reynolds Rd, Willow, AK 99688
(907) 744-8211 info@akhusky.dog

Snowhook Adventure Guides of Alaska

23880 Long Lake Rd, Willow, AK 99688
(907) 414-4547 snowhookkennel@gmail.com

Fishing

Come Fish Alaska Salmon!



DESHKA
Landing Charters & Lodge

(907) 495-5873
(801) 735-9863

Book online: www.Deshka.com

Half Day Guided Fishing Charters

ALL INCLUSIVE PACKAGES

Guided Fishing, Lodging, Meals

Deshka Landing Charters & Lodge

www.deshka.com

11745 N Recreation St, Willow, AK 99688
(907) 495-5873 jim@deshka.com

Hatcher Pass Castle

6595 Willow Fishhook Rd, Willow, AK 99688
(720) 965-7487 alaskaadventurecastle@gmail.com

Deshka Landing Charters & Lodge

www.deshka.com

11745 N Recreation St, Willow, AK 99688
(907) 495-5873 jim@deshka.com

Montana Creek Campground

Mile 96.5 Parks Hwy, Willow, AK 99688
(877) 475-CAMP (907) 733-5267
mccreservations@mtaonline.net

Sightseeing/Custom/Package Tours



WCT
WILLOW CREEK TOURS
ALASKA

SCENIC RAFTING ADVENTURES WITH WILLOW CREEK TOURS

- Family Friendly / All Ages
- On the way to Denali
- Voted Best In The Valley 2024

BOOK ONLINE NOW!



Willow Creek Tours

33900 Parks Hwy, Willow, AK 99688
(907) 715-8683 info@tour-ak.com



Wilderness Lodge

Deshka Landing Charters & Lodge

www.deshka.com

11745 N Recreation St, Willow, AK 99688
(907) 495-5873 jim@deshka.com

Hatcher Pass Castle

6595 Willow Fishhook Rd, Willow, AK 99688
(720) 965-7487 alaskaadventurecastle@gmail.com



Iditarod Trailside Lodging

An Authentic Alaskan Experience

www.iditarodlodging.com 907-232-6773

Open year round!

Iditarod Trailside Lodging

1150 S Colony Way Ste 3 PMB 328, Palmer, AK 99645
(907) 232-6773 info@iditarodlodging.com

www.iditarodlodging.com or scan QR code in our ad on page 46.

TALKEETNA

Apartment/Cabin/Chalet Rentals

Talkeetna Chalet

www.talkeetnachalet.net

26344 S Wolf Trek Rd, Talkeetna, AK 99676
(907) 733-4734 info@talkeetnachalet.net

Attraction or Event



ALASKA WILD HARVEST

Birch syrup, jam and more! Take the tour!

www.alaskabirchsyrop.com

Alaska Wild Harvest Birch Syrup & Berry Products

38139 (mi 1.1) Talkeetna Spur Rd, Talkeetna, AK 99676
(800) 380-7457 (907) 733-1409 info@alaskabirchsyrop.com

Denali Overlook Inn

29198 TALKEETNA SPUR (MILE 8.7) • TALKEETNA AK 99676

LOCAL: 907-733-3555 • TOLL FREE: 855-733-3555

INFO@DENALIOVERLOOKINN.COM



@DENALIOVERLOOKINN.TALKEETNA



DEVIL'S CANYON CHULITNA GORGE RIVER, RAIL & TRAIL NATURAL HISTORY TOURS



TALKEETNA, AK
907-733-2223
WWW.MAHAYSJETBOAT.COM

Denali Zipline Tours

www.denaliziplanetours.com

13790 E 2nd St, Talkeetna, AK 99676
(855) 733-3988 (907) 733-3988 info@denaliziplanetours.com
Experience the thrill of ziplines, suspension bridges, rappelling, and spiral staircases on this exciting Denali view tour. Friendly local staff, scenic views, and educational moments make for an unforgettable adventure.

Rise Balloon Adventures

www.riseballoonadventures.com

HC 89 Box 8620, Talkeetna, AK 99676
(907) 203-8299 rise.balloon@gmail.com

Talkeetna Historical Society Museum

PO Box 76, Talkeetna, AK 99676
(907) 733-2487 info@talkeetnahistoricalsociety.org

Backcountry Adventures

Alaska Nature Guides

www.alaskanatureguides.com

Talkeetna, AK 99676
(907) 733-1237 info@alaskanatureguides.com

Hikes and walks with great naturalist guides in South Denali: Denali State Park and Talkeetna. Scheduled or private custom trips, snowshoe and heli hikes, backpacking. Take our Denali Wilderness Hike for the best Denali views!

Alaska Off-Road Adventures

PO Box 13262, Trapper Creek, AK 99683
(907) 360-2651 alaskaoffroadadventures@gmail.com

Bed & Breakfast/Inn

Denali Overlook Inn

PO Box 1023, Talkeetna, AK 99676
(855) 733-3555 (907) 733-3555

Boat Excursions

Mahay's Jet Boat Adventures

www.mahaysjetboat.com

PO Box 705, Talkeetna, AK 99676
(907) 733-2223 mahays@mahaysjetboat.com

Experience remote, wilderness Alaska. Tour on an enclosed jetboat into Class V whitewater, entering Devil's Canyon, where few have ventured or take another one of our tours of varying lengths. All tours include natural history of the local area. Panoramic views of Denali make these trips unique and unforgettable. See ad on page 38.



Talkeetna River Guides
Where the mountains meet the rivers
(907) 733-2677

Talkeetna River Guides

PO Box 563, Talkeetna, AK 99676
(800) 353-2677 (907) 733-2677
Visit www.talkeetnariverguides.com or scan the QR code in our ad!

Brewery

Denali Brewing Company

www.denalibrewing.com

37083 Talkeetna Spur Rd, Talkeetna, AK 99676
(907) 733-2540

Bus/Shuttle/Limo/Taxi



Park Connection Motorcoach Service

3900 Arctic Blvd Ste 304, Anchorage, AK 99503
(800) 208-0200 (907) 245-0200 experts@alaskatravel.com
Daily deluxe motorcoach service between Talkeetna, Denali, Anchorage, Seward. Travel in comfort. Spacious seating, large picture windows, and onboard restrooms. Offering the only same-day scheduled service between Denali and Seward.

Cabin/Vacation Home



Meandering Moose Lodging

14677 E Cabin Spike Ave, Talkeetna, AK 99676
(907) 733-1000 info@meandering-moose-lodging.com

Susitna River Lodging

www.susitnariverlodge.com
23094 S Talkeetna Spur Rd, Talkeetna, AK 99676
(907) 733-0505 lodging@mtaonline.net

Talkeetna Cabins

C St, downtown Talkeetna, AK 99676
(907) 733-2227 reservations@talkeetnacabins.org

Trapper John's Cabin & Cottages

www.trapperjohnscabins.com

22611 S D St, Talkeetna, AK 99676
(907) 733-2354 info@trapperjohnscabins.com
Located along the Historic Village Airstrip in beautiful downtown Talkeetna!

Campground/RV Park



Talkeetna Camper Park

www.talkeetnacamper.com

Mile 13.7 Talkeetna Spur Rd, Talkeetna, AK 99676
(907) 733-2693 info@talkeetnacamper.com

Dining

Denali Brewpub

PO Box 1021, Talkeetna, AK 99676
(907) 733-2537



Homestead Kitchen

www.homesteadtalkeetna.com

13578 E Main St, Talkeetna, AK 99676
(800) 808-8068 (907) 733-4660 info@alaskacollection.com
Simple ingredients. Hearty dishes. Warm welcomes. Located along Talkeetna's charming main street, Homestead Kitchen serves fare designed to fuel your adventures. Choose from a variety of flatbreads, handhelds, soups, salads and more.

Mountain High Pizza Pie

www.pizzapietalketna.com

22165 S C St, Talkeetna, AK 99676
(907) 733-1234

Dog Sledding



AK Sled Dog Tours

www.sleddogtours.com

HC 89 Box 8620, Talkeetna, AK 99676
(907) 947-4210 info@aksleddogtours.com

Susitna Sled Dog Adventures

17930 Montana Creek Rd, Talkeetna, AK 99676
(907) 502-0247 susitnasleddogadventures@gmail.com

Fishing

Phantom Tri River Charters

22228 Talkeetna Spur Rd, Talkeetna, AK 99676
(907) 733-2400 info@phantomtririvercharters.com

THE DENALI

Flightseeing Company®

& Glacier Landings




aviation
Talkeetna, Alaska

flyk2.com | 907.733.2291



Flightseeing

K2 Aviation ● ❄️
www.flyk2.com
 14052 E 2nd St, Talkeetna, AK 99676
 (800) 764-2291 (907) 733-2291 info@flyk2.com
 Journey into Denali National Park to experience Denali, North America's tallest mountain (20,310 feet). Our pilot-guides will wow you with stunning vistas, towering granite peaks, and winding glaciers. We offer a wide selection of scenic and glacier landing flight tours. We look forward to welcoming you to K2. See Alaska from our view!

Denali flightseeing and floatplane services out of Talkeetna!




(907) 616-1010 N2ALASKA.COM

N2 Alaska ● ❄️
 P.O. Box 184, Talkeetna, AK 99676
 (907) 616-1010 flyn2alaska@gmail.com

Sheldon Air Service ● ❄️
 22703 S Terminal Ave, Talkeetna, AK 99677
 (907) 733-2321 info@sheldonairservice.com

Talkeetna Air Taxi, Inc. ● ❄️
www.talkeetnaair.com
 14212 E 2nd St, Talkeetna, AK 99676
 (800) 533-2219 (907) 733-2218 info@talkeetnaair.com
 Explore Denali and Denali National Park with extraordinary flights and glacier landings in a spectacular world of towering peaks and vast gorges. Continuously voted the #1 tour activity on Tripadvisor.

Hotel/Motel/Resort

Latitude 62 Lodge/Motel ● ❄️
 PO Box 478, Talkeetna, AK 99676
 (907) 733-2262 lat62@alaska.net



Talkeetna Alaskan Lodge ● ❄️
www.talkeetnalodge.com
 Mile 12.5 Talkeetna Spur Rd, Talkeetna, AK 99676
 (800) 808-8068 info@talkeetnalodge.com
 Stay in luxurious comfort with panoramic views of Denali and the breathtaking Alaska Range. Located two hours from Anchorage, Talkeetna Alaskan Lodge features three on-site restaurants, spacious meeting facilities, a downtown shuttle and free parking, and is a proud recipient of a TripAdvisor "2024 Travelers' Choice" award.



Talkeetna Air Taxi®
THE GLACIER LANDING COMPANY

DENALI FLIGHTS & GLACIER LANDINGS



907-733-2218 WWW.TALKEETNAAIR.COM

Talkeetna Inn ● ❄️
 PO Box 256, Talkeetna, AK 99676
 (907) 733-2323 info@talkeetnainn.com

Talkeetna Roadhouse ● ❄️
www.talkeetnaroadhouse.com
 PO Box 604, Talkeetna, AK 99676
 (907) 733-1351 info@talkeetnaroadhouse.com

Outfitters/Galleries/Gift Shops

Alaska Hippies Photo Bus & Boutique ● ❄️
 13659 South Alley, Talkeetna, AK 99676
 (907) 715-7891 akhippiesbus@gmail.com

Once in a Blue Moose ● ❄️
 13594 Main St, Talkeetna, AK 99676
 (907) 733-3722 cher@rememberalaska.com

Rail



Alaska Railroad ● ❄️
 PO Box 107500, Anchorage, AK 99510
 (800) 544-0552 (907) 265-2494 reservations@akrr.com
 Since 1923, the Alaska Railroad has connected Alaska's most popular destinations: Anchorage, Denali, Seward, Fairbanks, Talkeetna and more. Take advantage of daily summer service to see glaciers, mountains, wildlife and incredible views from our comfortable railcars (ask about our premium GoldStar Service). Ideal for day trips or travel packages; open year-round.



AlaskaTrain.com
ALASKA TOUR & TRAVEL
Book Online at AlaskaTrain.com

Online Reservations for All Alaska Train Services

AlaskaTrain.com ● ❄️
 3900 Arctic Blvd Ste 304, Anchorage, AK 99503
 (800) 266-8625 (907) 245-0200 info@alaskatrains.com
 Online reservations for Alaska Railroad GoldStar and Adventure Class, plus private dome rail and deluxe motorcoaches. Travel to Talkeetna, Denali, Seward, Anchorage, Fairbanks, Whittier. Book your Whittier/Seward cruise transfers, too!

Sightseeing/Custom/Package Tours

Alaska Edge Wilderness Tours ● ❄️
 42800 S Parks Hwy, Talkeetna, AK 99676
 (866) 302-7623 (907) 733-7774 fred@alaskaedge.com



Alaska
TOUR & TRAVEL
Book Online at AlaskaTravel.com

Your Alaska Travel Planning Experts

Alaska Tour & Travel ● ❄️
 3900 Arctic Blvd Ste 304, Anchorage, AK 99503
 (800) 208-0200 (907) 245-0200 experts@alaskatravel.com
 Your Alaska Travel Experts. Specializing in custom vacations to Alaska's most spectacular destinations including Denali, Talkeetna, Seward. Convenient planning, great value, quality experiences. Let an Alaskan plan your Alaska vacation.



Mahay's Jet Boat Adventures ❄️
www.mahaysjetboat.com
PO Box 705, Talkeetna, AK 99676
(907) 733-2223 mahays@mahaysjetboat.com

Visitor Center/Chamber/Gov't Agency

Talkeetna Chamber of Commerce ❄️
PO Box 334, Talkeetna, AK 99676
(907) 414-0376 info@talkeetnachamber.org

Wilderness Lodge

Talkeetna Denali View Lodge & Cabins ❄️
15669 E Coffey Lane, Talkeetna, AK 99676
(907) 733-4111 info@talkeetnadenaliviewlodge.com

TRAPPER CREEK

Cabin/Vacation Home

Gate Creek Lodge ❄️
www.gatecreeklodge.com
21800 Towns Pl Rd, Trapper Creek, AK 99688
(907) 280-8140 gatecreeklodge@gmail.com
Gate Creek Lodge in Petersville, AK is the most popular winter snowmachine riding area. From two-person cozy cabins to groups of 10, we offer six year-round private lakeside cabins.

Wilderness Lodge

Shulin Lake Resort ❄️
100 N Shulin Lake, Trapper Creek, AK 85963
(907) 502-0414 valerie.headlee@shulinlakeresort.com

DENALI STATE PARK

Backcountry Adventures

Alaska Nature Guides ❄️
Talkeetna, AK 99676
(907) 733-1237 info@alaskanatureguides.com

Hotel/Motel/Resort

Mt. McKinley Princess Wilderness Lodge ❄️
www.princesslodges.com
Milepost 133 Parks Hwy, Denali State Park, AK 99683
(800) 426-0500 (907) 733-2900
Boasting an incredible view of Denali, the lodge offers vaulted ceilings, a massive stone fireplace, Hudson Theater, natural-ist-led presentations, treehouse, and nature trails that stretch for miles. Enjoy delicious cuisine from our three dining venues or choose your next adventure at the Guest Service Desk.

DENALI HIGHWAY

Hotel/Motel/Resort

Backwoods Lodge ❄️
PO Box 50, Cantwell, AK 99729
(907) 987-0960 backwoodslodge49@gmail.com



DENALI NATIONAL PARK

Backcountry Adventures

Snowhook Adventure Guides of Alaska ❄️
23880 Long Lake Rd, Willow, AK 99688
(907) 414-4547 snowhookkennel@gmail.com
Unforgettable Alaska adventures! See our ad on the outside back cover!

Bus/Shuttle/Limo/Taxi



Park Connection Motorcoach Service ❄️
3900 Arctic Blvd Ste 304, Anchorage, AK 99503
(800) 208-0200 (907) 245-0200 experts@alaskatravel.com
Offering the only same-day scheduled service between Denali and Seward! Daily deluxe motorcoach service between Denali, Talkeetna, Anchorage, Seward. Travel in comfort. Spacious seating, large picture windows, and onboard restrooms.

Flightseeing

Denali Air ❄️
www.denaliair.com
Mile 229.5 Parks Hwy, Denali National Park, AK 99755
(907) 683-2261 flightseeing@denaliair.com



TEMSCO Helicopters ❄️
1 Glacier Way, Denali National Park, AK 99755
(907) 683-0683 denali_tours@temscoair.com

Hotel/Motel/Resort



Alaska Tour & Travel ❄️
3900 Arctic Blvd Ste 304, Anchorage, AK 99503
(800) 208-0200 (907) 245-0200 experts@alaskatravel.com
Book Denali National Park wilderness lodges, cabins, and hotels, plus tours and transportation in one place. Specializing in custom vacations, convenient planning, great value. Let an Alaskan plan your Alaska vacation.



Mt. McKinley Princess Wilderness Lodge®



Mile Post 133 Parks Hwy
Denali State Park, AK 99683

Picture-perfect wilderness retreat located just south of the National Park with exceptional views of the Great One.

princesslodges.com
800.426.0500

 **PRINCESS LODGES**

Copper River • Denali • Fairbanks • Kenai • Mt. McKinley



Denali Backcountry Lodge ❄️
www.denalibackcountrylodge.com
509 W 4th Ave, Anchorage, AK 99501
(800) 808-8068 info@denalibackcountrylodge.com
Escape by helicopter to your own private cabin deep in stunning Denali National Park. Enjoy authentic Alaska hospitality, all-inclusive dining, spa services and all the comforts of a luxury resort, with ample opportunity to explore the untamed backcountry through guided hikes, mountain biking, gold panning, paddle boarding and more.

Denali Bluffs Hotel ❄️
238.4 Parks Hwy, Denali National Park, AK 99755
(855) 683-8600 (907) 683-7000
reservations@denalialaska.com
Nestled on the slopes of Sugarloaf Mountain, with views of Denali National Park! Enjoy a hearty meal at the Mountaineer Grill and Bar or tasty treats at the Perky Moose Cafe. Featuring cozy, cabin-like rooms or deluxe rooms. All have Wi-Fi, coffee maker, and fridge. Tour desk, free shuttle, on-site laundry.



Denali Cabins ❄️
www.denali-cabins.com
Mile 229 Parks Hwy, Denali National Park, AK 99755
(800) 808-8068 info@denali-cabins.com
Located just south of Denali National Park's entrance, Denali Cabins is a favorite retreat among Alaskans. Settle into your own charming cabin and unwind, with hot tubs and a sauna located on-site. Head over to Prey Bar & Eatery at mealtime for a fresh and hearty menu — perfectly suited for Denali exploration.

Denali Grizzly Bear Resort ❄️
www.denaligrizzlybear.com
PO Box 7, Denali National Park, AK 99755
(866) 583-2696 (907) 683-2696 info@denaligrizzlybear.com

Denali Park Village ❄️
Mile Post 231 George Parks Hwy,
Denali National Park, AK 99755
(800) 276-7234 (907) 683-8900
denalireservations@aramark.com

Denali Princess Wilderness Lodge ❄️
www.princesslodges.com
Mile Post 238.5 Parks Hwy, Denali National Park, AK 99755
(800) 426-0500 (907) 683-2282
Located near the park entrance on the banks of the Nenana River, the lodge features an expansive deck with views of the park, shopping, tour desk, and shuttle service to the park visitor center. Dining options include King Salmon Restaurant, Fannie Q's Saloon, Grizzly Burger, and Lynx Creek Pizza.

VISIT DENALI BY TRAIN

Let us take you to Denali National Park and Preserve, home to the tallest peak in North America and untouched wilderness.

Get on track to adventure at:
AlaskaRailroad.com/Denali

DAILY SUMMER TRAINS | TRAVEL PACKAGES | LOCAL GUIDES



Denali Ridgetop Cabins

www.denaliridgetopcabins.com
PO Box 81512, Fairbanks, AK 99708
(866) 680-2440 (907) 683-2448
stay@denaliridgetopcabins.com

Six private cabins on 80 acres on the north boundary of Denali National Park. Located just 16 miles north of the entrance to Denali National Park, our cabins provide an expectations-exceeding wilderness lodging experience by night and easy access to all that Denali National Park has to offer by day.

Grande Denali Lodge

238 Parks Hwy, Denali National Park, AK 99755
(855) 683-8600 (907) 683-5100
reservations@denalialaska.com

Perched on Sugarloaf Mountain, travelers can experience panoramic views looking into Denali National Park! Located at the park entrance, the hotel has spacious rooms surrounded by aspen forest featuring Wi-Fi, A/C, fridge. Enjoy award-winning dining at the Alpenglow Restaurant or cocktails at the Peak Spirits Lounge. Tour desk, free shuttle, on-site laundry.

McKinley Chalet Resort

www.westmarkhotels.com
Mile Post 238.9 Parks Hwy, Denali National Park, AK 99755
(800) 544-0970 (907) 683-6450

Less than two miles from the park entrance, the resort offers modern accommodations on the banks of the Nenana River. Amenities include upscale and casual dining options, an espresso bar, fire pits, Music of Denali Dinner Theater, tour desk, and shuttle to the park visitor center.

Rail



Online Reservations for All Alaska Train Services

AlaskaTrain.com

3900 Arctic Blvd Ste 304, Anchorage, AK 99503
(800) 266-8625 (907) 245-0200 info@alaskatrain.com

Online reservations for Alaska Railroad GoldStar and Adventure Class, plus private dome rail and deluxe motorcoaches. Travel to Denali, Seward, Anchorage, Fairbanks, Talkeetna, Whittier. Book your Whittier/Seward cruise transfers, too!

Sightseeing/Custom/Package Tours

Alaska Railroad

www.alaskarailroad.com
PO Box 107500, Anchorage, AK 99510
(800) 544-0552 (907) 265-2494 reservations@akrr.com
Mile 1.25 Denali National Park Road

The Alaska Railroad is your ticket to Alaska adventure, offering daily summer service to destinations including Denali National Park, Talkeetna, Seward, Anchorage, Fairbanks and more. Choose from our travel packages for day trips, short getaways or multi-day itineraries, or work with our local reservation agents to build your own Alaska trip.



Book Online at AlaskaTravel.com

Your Alaska Travel Planning Experts

Alaska Tour & Travel

3900 Arctic Blvd Ste 304, Anchorage, AK 99503
(800) 208-0200 (907) 245-0200 experts@alaskatravel.com


Book all Denali National Park cabins, lodges, tours, and transportation with us. Specializing in custom vacations, convenient planning, a great value for you. Let an Alaskan plan your Alaska vacation.

Northern Alaska Tour Company

www.northernalaska.com
PO Box 82991, Fairbanks, AK 99708
(800) 474-1986 (907) 474-8600
adventure@northernalaska.com

Experience Denali and Alaska's Arctic by air. Denali Summit Flight: Get a dramatic view of Denali and the surrounding peaks and glaciers as your aircraft climbs to nearly 21,000 feet. Arctic Circle Air Adventure: Cross the Arctic Circle, explore the Brooks Mountain Range and earn an Arctic Circle Certificate.

Travel Agency/Reservations



Pursuit - Alaska Collection

www.alaskacollection.com
509 W 4th Ave, Anchorage, AK 99501
(800) 808-8068 info@pursuitalaska.com

Visitor Center/Chamber/Gov't Agency

Discover Denali

Mile 0.4 Healy Spur Rd, Healy, AK 99743
(907) 683-4636 info@discoverdenali.org



OFF THE BEATEN PATH

Explore the backcountry, take a drive along the Denali Highway, fly into a remote Alaska lodge, or follow the famous Iditarod Trail into the Heart of Alaska.

EXCLUSIVELY ALASKA

With only three highways in an area that encompasses 23,000 square miles, there is a lot of country in the Mat-Su Valley that is off the beaten path. Throughout this untamed wilderness, there are many remote wilderness lodges only accessible by boat or from various air taxi hubs such as Anchorage, Willow and Talkeetna. A short plane ride will transport you to another world of solitude. Enjoy fresh, seasonal food and diverse activities from float trips and berry picking to spa treatments and culinary schools. In the winter, heli-skiing opportunities abound. Spend a day, a night or more off the beaten path in this quintessential Alaska environment.



WHERE TO GO; WHAT TO DO

- Camp, hike, float the rivers, photograph a wide variety of birds, look for caribou, moose, black and brown bears.
- Dine on seasonal, Alaska delights served fresh from the river or garden.
- Cheer on the leaders of the Iditarod Trail Sled Dog Race as they pass along the trail heading toward Rainy Pass.

OFF THE BEATEN PATH



Travel Agency/Reservations

Alaska.org & The Alaska App ●❄️
PO Box 100519, Anchorage, AK 99510
(907) 777-7700 yael@alaska.org

Visitor Center/Chamber/Gov't Agency

Anchorage Chamber of Commerce ●❄️
1016 W Sixth Ave Ste 303, Anchorage, AK 99501
(907) 272-2401 info@anchoragechamber.org

Chugiak-Eagle River Chamber of Commerce ●❄️
PO Box 770353, Eagle River, AK 99577
(907) 694-4702 info@cer.org

Visit Anchorage ●❄️
www.anchorage.net
142 W Fifth Ave, Anchorage, AK 99501
(800) 478-1255 (907) 257-2363 info@anchorage.net
Urban comfort. Wild Alaska adventure. Glacier views and the city skyline. Pair moose, bear, bald eagle, and beluga whale sightings with hundreds of miles of trails and Alaska's best hotels, dining, and tax-free shopping. Anchorage is the only place that has it all.

FAIRBANKS/INTERIOR

Attraction or Event

Fountainhead Antique Auto Museum ●❄️
www.fountainheadmuseum.com
212 Wedgewood Dr, Fairbanks, AK 99645
(907) 450-2100 willyv@fountainheadhotels.com
Discover Alaska's top attraction that's not just for vintage auto enthusiasts. Immerse yourself in a captivating journey through time, exploring elegant automobiles, fashion, and Alaska's rich automotive history. Visit fountainheadmuseum.com for more information.

Hotel/Motel/Resort

Bear Lodge at Wedgewood Resort ●❄️
www.bearlodgealaska.com
325 Wedgewood Dr, Fairbanks, AK 99701
(907) 452-1442 (800) 528-4916 askus@fountainheadhotels.com
Cozy, well-appointed summer lodging in Fairbanks. Large guest rooms, AC, Wi-Fi, nature trails, incredible flower gardens, on-site dining and lounge, Antique Auto Museum on-site as well!

Pike's Waterfront Lodge ●❄️
1850 Hoselton Road, Fairbanks, AK 99709
(877) 774-2400 (907) 456-4500 info@pikeslodge.com

Sophie Station Suites ●❄️
www.sophiestationsuites.com
1717 University Ave, Fairbanks, AK 99709
(800) 528-4916 (907) 456-3642
askus@fountainheadhotels.com

A favorite of both business and leisure travelers. Large condo-style suites with Wi-Fi, separate bedroom, fully appointed kitchen, and balconies. Zach's Restaurant and Lounge on-site, laundry facility, and fitness room. Near groceries and airport. Free shuttle. Locally owned and operated.

Wedgewood Resort ●❄️
www.wedgewoodresortalaska.com
212 Wedgewood Dr, Fairbanks, AK 99701
(800) 528-4916 (907) 452-1442 askus@fountainheadhotels.com
Nestled on 105 acres, experience the natural beauty Fairbanks has to offer, right in town. Condo-style suites with separate dining, living room, and bedrooms. Fully equipped kitchens, laundry, Wi-Fi, shuttle, and nature trails. Ideal for an extended stay and families! Home of the Fountainhead Antique Auto Museum. Locally owned.

Visitor Center/Chamber/Gov't Agency



Explore Fairbanks ●❄️
www.explorefairbanks.com
101 Dunkel St Ste 111, Fairbanks, AK 99701
(800) 327-5774 (907) 456-5774 info@explorefairbanks.com
Be inspired by the light of the aurora borealis. Renew your energy under the midnight sun. Experience the warmth of Fairbanks - Alaska's Golden Heart - the basecamp to Denali, Interior and Arctic Alaska. Call or visit the website to request your free Fairbanks Visitors Guide or Winter Guide.

GLENNALLEN

Visitor Center/Chamber/Gov't Agency

Copper Valley Visitor Information Center ●❄️
PO Box 495, Glennallen, AK 99588
(907) 822-5555 chamber@cvinternet.net

KENAI PENINSULA

Attraction or Event

Alaska SeaLife Center ●❄️
PO Box 1329, Seward, AK 99664
(888) 378-2525 (907) 224-6300 visit@alaskasealife.org
Visit the only public aquarium in Alaska that is a combined marine research, education, and wildlife response facility. Buy tickets online; the earlier you buy, the more you save!

Boat Excursions



Kenai Fjords Tours ●
www.kenaifjords.com
509 W Fourth Ave, Anchorage, AK 99501
(888) 478-3346 info@kenaifjords.com
Explore spectacular scenery, tidewater glaciers and abundant wildlife with Kenai Fjords National Park's original tour operator. Set off on custom sightseeing vessels, built for comfort and led by local experts. Visit the Fox Island day lodge for lunch, featuring grilled steak and Alaska salmon, or book an onboard dinner cruise.



EXPLORE KENAI FJORDS NATIONAL PARK

GLACIER & WILDLIFE CRUISE WITH 360° VIEWS

ALASKAN OWNED. OPERATED. LOVED.

Major
MARINE TOURS
SEWARD, ALASKA

 | **MAJORMARINE.COM** | **907-224-8030**

Major Marine Tours ●
www.majormarine.com
1412 4th Ave, Seward, AK 99664
(800) 764-7300 (907) 224-8030 info@majormarine.com
Glacier and wildlife cruises into Kenai Fjords National Park departing from Seward. See whales, otters, puffins and more! Locally owned and operated.

Cabin/Vacation Home

Alaska Adventure Cabins ●
2525 Sterling Hwy, Homer, AK 99603
(907) 715-2745 info@alaskaadventurecabins.com

Hotel/Motel/Resort

Harbor 360 Hotel ●❄️
www.harbor360hotel.com
1412 4th Ave, Seward, AK 99664
(888) 514-8687 (907) 224-2550
reservations@harbor360hotel.com
Seward's premier waterfront hotel located on the harbor. Indoor pool and hot tub, free breakfast, walking distance to restaurants and shops. On-site check-in and boarding for glacier and wildlife cruises.

Seward Windsong Lodge ●❄️
Mile 0.5 Herman Leirer/Exit Glacier Rd, Seward, AK 99664
(800) 808-8068 info@sewardwindsong.com

Visitor Center/Chamber/Gov't Agency

Homer Chamber of Commerce ●❄️
201 Sterling Hwy, Homer, AK 99603
(907) 235-7740

Kenai Chamber of Commerce & Visitor Center ●❄️
11471 Kenai Spur Hwy, Kenai, AK 99611
(907) 283-1991 info@visitkenai.com

Wilderness Lodge

Kenai Fjords Wilderness Lodge ●
1304 Fourth Ave, Seward, AK 99664
(800) 808-8068 info@kenaifjordslodge.com

PRINCE WILLIAM SOUND

Boat Excursions


Phillips Cruises and Tours/26 Glacier Cruise ●
www.26glaciers.com
519 W 4th Ave, Anchorage, AK 99501
(800) 544-0529 (907) 276-8023 info@26glaciers.com
Experience Prince William Sound's massive tidewater glaciers and amazing marine wildlife. Includes: hot meal, no seasickness guarantee, narration by Chugach National Forest Service ranger. 26 Glacier Cruise/Glacier Quest Cruise, Whittier.

Stan Stephens Glacier & Wildlife Cruises ●
www.stanstephenscruises.com
PO Box 1297, Valdez, AK 99686
(866) 867-1297 (907) 835-4731 info@stephenscruises.com
112 N Harbor Dr Valdez, AK
Discover Prince William Sound from Valdez! Relax on board our comfortable vessels as you visit Columbia or Meares Glacier. See amazing wildlife. Tours are fully narrated by our Alaskan staff.

Discover Valdez ●❄️
www.valdezalaska.org
309 Fairbanks Dr, Valdez, AK 99686
(907) 835-2984 info@valdezalaska.org

Visitor Center/Chamber/Gov't Agency

Greater Whittier Chamber of Commerce ●❄️
PO Box 607, Whittier, AK 99693



CALM WATERS

WILD SIGHTS

PRINCE WILLIAM SOUND

26 Glacier Cruise

In One Day!

2014

2015

2016

2017

2018

2019

2020

2021

2022

2023

2024

TripAdvisor

Travelers' Choice Awards

Best of the Best

• 26 Glacier Cruise | Glacier Quest Cruise

• May - October | Complimentary hot meal

• See migratory birds, sea otters, harbor seals, whales

INDUSTRY EXCLUSIVE

NO SEASICKNESS GUARANTEED!

COMPLIMENTARY

HOT MEAL, COFFEE & TEA

U.S. Forest Service

Ranger Narration

www.26glaciers.com

907-276-8023 | 100 West Camp Rd. Whittier AK



VALDEZ, ALASKA

EXPLORE THE SOUND!

PRINCE WILLIAM SOUND GLACIER & WILDLIFE CRUISES

Let Alaskans Show You Alaska. See amazing wildlife and experience the icebergs of Columbia Glacier and the calving of Meares Glacier.

866.867.1297 • stanstephenscruises.com

LOCAL EXPERTS

AT HOME IN VALDEZ

SINCE 1974

Star Stephens

GLACIER & WILDLIFE CRUISES

VALDEZ, ALASKA

SOUTHEAST ALASKA

Visitor Center/Chamber/Gov't Agency

Haines Convention & Visitors Bureau

Box 530, Haines, AK 99827
(800) 458-3579 (907) 766-2234 hcvb@haines.ak.us

Ketchikan Visitors Bureau

50 Front St Ste 203, Ketchikan, AK 99901
(800) 770-3300 (907) 225-6166 info@visit-ketchikan.com

Travel Juneau

800 Glacier Ave Ste 201, Juneau, AK 99801
(907) 586-2201 info@traveljuneau.com

Visit Sitka

104 Lake St, Sitka, AK 99835
(907) 747-8604 tourism@visitsitka.org

SOUTHWEST ALASKA

Visitor Center/Chamber/Gov't Agency

Discover Kodiak

100 Marine Way Ste 200, Kodiak, AK 99612
(800) 789-4782 (907) 486-4782 visit@kodiak.org

Nome Visitor Center & Convention Bureau

301 Front St, Nome, AK 99762
(907) 443-6555 vcdirector@nomechamber.com

Unalaska/Dutch Harbor Convention & Visitors Bureau

PO Box 545, Unalaska, AK 99685
(907) 581-2612 director@unalaska.org

AREAWIDE SERVICES

Airlines

Alaska Airlines

3600 International Airport Rd, Anchorage, AK 99502
(800) 252-7522

Attraction or Event



NEED A TRAIL MAP?

OuterSpatial



Mat-Su Trails and Parks Foundation

PO Box 652, Palmer, AK 99645
(907) 746-8757 info@matsutrails.org

Backcountry Adventures

Alaska ATV Adventures

www.alaskaatvadventures.com
Bird Valley Trailhead, Bird Creek, AK 99540
(907) 694-4294

Unique and thrilling opportunities await you, just south of downtown Anchorage. Alaska ATV Adventures offers a wide array of ATV/QUAD/UTV excursions. Engage in the sights, sounds and smells of the northern most temperate rainforest while experiencing the thrill of the throttle through the winding wooded trails of the Chugach Mountain Range.

Alaska State Parks

7278 E Bogard Rd, Wasilla, AK 99654
(907) 745-8935 stuart.leidner@alaska.gov

Business Services

Mat-Su Valley Frontiersman

5751 E Mayflower Ct, Wasilla, AK 99654
(907) 352-2250 news@frontiersman.com

Matanuska Valley Federal Credit Union

1020 S Bailey St, Palmer, AK 99645
(907) 745-4891

VISIT

TALKEETNA

BY TRAIN

Let the train take you to idyllic small-town Alaska, where art, live music and great dining welcome you. Relax with a walk along Main Street, or see Denali by riverboat or plane.

ALASKA

RAILROAD

Get on track to adventure at: AlaskaRailroad.com/Talkeetna

DAILY SUMMER TRAINS | TRAVEL PACKAGES | LOCAL GUIDES



Campground/RV Park

Alaska Campground Owners Association (ACOA)

www.akcampgrounds.com
PO Box 111005, Anchorage, AK 99511
(907) 339-9082 alaskacampgrounds@gmail.com

Lifetime Adventures

39370 Eklutna Lake Rd, Chugiak, AK 99567
(907) 746-4644 info@lifetimeadventure.net
Visit lifetimeadventures.net! Enjoy the scenery of Eklutna Lake with a kayak or bike rental or tour. Located midway between the Mat-Su Valley and Anchorage.

Sightseeing/Custom/Package Tours

Alaska Adventure Unlimited & Chalets

www.alaskaadventureunlimited.com
PO Box 871681, Wasilla, AK 99687
(800) 580-3494 (907) 373-3494
info@alaskaadventureunlimited.com

AAU small group adventures operate premier hands-on discovery tours with resident guides, sharing first-hand knowledge of local destination secrets. Our multi-day adventures offer flexibility and comfort, in our 13-seat mini-executive coaches. Highlights include Denali flightseeing, Kenai Fjords whale watching, and wilderness wildlife viewing, all while accommodating different skill levels and interests. AAU also offers 2-bdrm/2-bath Alaska chalets, rentable year-round.

Alaska Private Touring

www.alaskaprivatetouring.com
600 Barrow Street Ste 200B, Anchorage, AK 99501
(888) 868-7259 (907) 375-6582
experts@alaskaprivatetouring.com

Alaska Railroad

www.alaskarailroad.com
PO Box 107500, Anchorage, AK 99510
(800) 544-0552 (907) 265-2494 reservations@akrr.com
Mile 1.25 Denali National Park Road

The Alaska Railroad is your ticket to Alaska adventure, offering daily summer service to destinations including Denali National Park, Talkeetna, Seward, Anchorage, Fairbanks and more. Choose from our travel packages for day trips, short getaways or multi-day itineraries, or work with our local reservation agents to build your own Alaska trip.

Alaska Skylar Travel

3404 Arctic Blvd, Anchorage, AK 99503
(907) 274-8884

Alaska Travel Connections, LLC

www.alaskatravelconnections.com
1125 W Balboa Dr, Wasilla, AK 99654
(907) 315-3026 info@alaskatravelconnections.com
Are you ready for the trip of a lifetime? Explore our customizable sample itineraries at www.alaskatravelconnections.com and let us help you plan your one-of-a-kind adventure.

Alaska Wild Journeys

www.wildjourneysalaska.com

Eagle River, AK 99577
(907) 885-3119 wildjourneysak@gmail.com

Experience seamless travel with Wild Journeys Alaska's private cruise transfers or guide-for-the-day options. Enjoy personalized service, breathtaking routes, and customized itineraries. Wild Journeys ensures a smooth, stress-free journey to your next Alaska adventure. Comfort and exploration await!

Alaska Wildland Adventures

PO Box 389, Girdwood, AK 99587
(800) 334-8730 (907) 783-2928 info@alaska-wildland.com

Premier Alaska Tours, Inc.

www.premieralaskatours.com
1900 Premier Ct, Anchorage, AK 99502
(888) 486-8725 (907) 279-0001 info@touralaska.net

Travel Agency/Reservations

All Alaska Tours

600 Barrow St Ste 200, Anchorage, AK 99501
(907) 272-8687 info@allalaskatours.com

Travel Guides

Alaska Travelgram

2626 Cottonwood St, Anchorage, AK 99645
(907) 727-1113 zoom907@icloud.com

KTUU Channel 2

501 East 40th Ave, Anchorage, AK 99503
(907) 762-9202 njohnson@ktuu.com



2025 Edition

Only \$44.95 USD

Find The MILEPOST® 2025 at your local Costco, Todd Communications or dial 1-817-569-7116

amazon.com



Alaska

SAVING INDIGENOUS CULTURE

Morris Media Network

PO Box 240449, Anchorage, AK 99524
(907) 313-9110 john.lunn@morris.com

54 THE REST OF ALASKA

Venues open year round ●❄️, summer only ● and winter only ❄️

Venues open year round ●❄️, summer only ● and winter only ❄️

ALASKAVISIT.COM 55

THE REST OF ALASKA



NEED MORE INFO?

Mat-Su CVB Office
907-746-5000 | alaskavisit.com

Public Use Cabins
907-745-3975 | dnr.alaska.gov/parks/cabins

Fishing Report
adfg.alaska.gov/sf/FishingReports/

Alaska Marine Highway
800-642-0066 | ferryalaska.com

Statewide Info
907-929-2842 | travelalaska.com

Highway Conditions
511 or 866-282-7577 | 511.alaska.gov

Time and Temperature: 844

The Matanuska-Susitna Convention and Visitors Bureau (Mat-Su CVB) has made its best effort to provide accurate listings but does not guarantee accuracy, service or quality of the listings presented. Requests for more information should be made to the company in the listing. Mat-Su CVB is not responsible for goods or services provided by firms or organizations listed in this visitor guide.

No portion of this publication may be reproduced without express written consent from Mat-Su CVB. Updated or new information, as well as suggestions for improvement, should be made to Mat-Su CVB. (907) 746-5000.

DESIGN: Brilliant Media Strategies

PHOTOS: ©Tom Bol, Tom Bol Photography

Matanuska Glacier Helicopter Tours



Take an unforgettable flight with Sheep Mountain Air!

- Located just 2 hours from Anchorage
- Tours for all ages and abilities
- All tours flown by the owner with 15+ years of local experience
- Full service lodge with handcrafted cabins and delicious restaurant
- Elopement packages, photography tours, and picnics. Winter tours also!

"The absolute highlight of our trip to Alaska!"
- Lisa K



 (907) 745-5121  www.sheepmountain.com



MAT-SU CONVENTION & VISITORS BUREAU

610 S Bailey Street, Suite 201
Palmer, AK 99645
(907) 746-5000



JOIN OUR NEXT ADVENTURE
IN ALASKA'S MAT-SU VALLEY!

CALL (907) 414-4547 OR VISIT
SNOWHOOKADVENTURES.COM

