

Montana Creek Dog Mushers Winter Trail System

Non-motorized winter trail system

- Tread:** Snow - groomed for dog sled racing – 3’ - 8’ wide
Length: 12.5 miles (20 kilometers)
Difficulty: Easy to moderate
Activity: Winter only – dog mushing, cross-country skiing and skijoring
Trailhead: Large parking area; public toilet facilities
Nearest town: Willow
Manager: Montana Creek Dog Mushers Club (manager)
Contact: Mike Gurnett (pres@mcdma.org)
MSB Land Management Division (secondary contact) (Phone 745-9867)

How to get there

Montana Creek Dog Mushers Winter Trail System is located north of the community of Willow. From the intersection with the Parks Highway at MP 94.2 follow MO Dog Mushers Lane east to the end. The road is gated and closed in the summer.

General description

A winter trail system consisting of a series of loops that allow dog mushers (and other non-motorized trail users) to travel 3, 5, 7, or 9 miles depending on the route one takes. The trails traverse large swamps and Black Spruce forests and are generally wide enough for one dog sled (3-5’). In some places along the trails the tracks are wide enough for two sleds to pass. The trails must be traveled in a specific direction to avoid conflict with dog teams. They are well marked with directional indicators and colors to indicate the length of the loop.

Trail uses

The Montana Creek Dog Mushing Trail System is maintained for dog mushing by the Montana Creek Dog Mushing Club. **It is available for use by non-members during ‘non-racing’ days only but fees are charged. Daily fee of \$5, or seasonal pass for \$25.** Cross-country skiing and skijoring are allowed, but must yield to dog teams.

***Take note**

Many local professional dog mushers use this area for training and the Montana Creek Dog Mushers use it for races. Please check with the Montana Creek Dog Mushers Club for their race schedule and possible trail closures before using the trails. Check their website for the latest information - <http://www.mcdma.org> Always follow the direction of the course and yield to dog teams. Loose dogs are prohibited. Always keep your dogs leashed (or harnessed) and under your control.

Montana Creek Dog Mushers Winter Trail

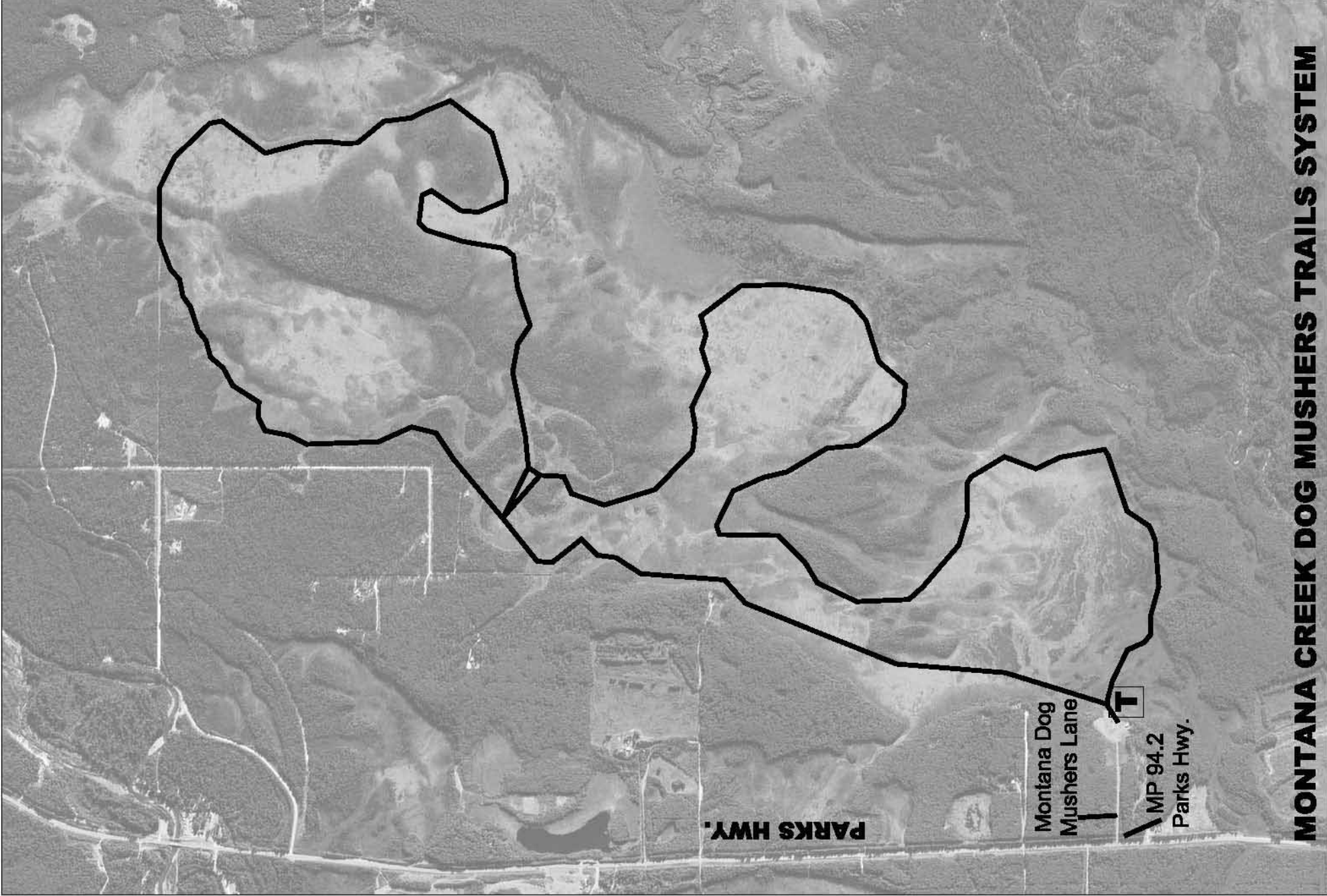


**Matanuska Susitna Borough
Community Development Department
350 E. Dahlia Avenue
Palmer, Alaska 99645**

**(907) 745-9631
www.matsugov.us**

LEGEND

T Trailhead



PARKS HWY.

Montana Dog
Mushers Lane

MP 94.2
Parks Hwy.

MONTANA CREEK DOG MUSHERS TRAILS SYSTEM