

NEW FISHING REGULATIONS FOR MONO COUNTY

The California State Fish and Game Commission has approved NEW statewide Inland Trout Fishing Regulations for the 2021-2022 fishing season which go into effect on March 1, 2021.



MARCH 1, 2021 FISHING REGULATIONS FOR POPULAR FISHING DESTINATIONS IN MONO COUNTY

For a full list of regulations go to https://fgc.ca.gov/Regulations/2020-New-and-Proposed#3_00









BODY OF WATER	FISHING REGULATIONS EFFECTIVE MARCH 1, 2021	DAILY BAG AND POSSESSION LIMIT
Rock Creek Lake	Last Saturday in April through Nov. 15. Closed the rest of the year.	5 trout
Rock Creek	Last Saturday in April through Nov. 15.	5 trout per day, 10 in possession
Rock Creek <i>continued</i>	Nov. 16 through the Friday preceding the last Saturday in April. Only artificial lures with barbless hooks may be used.	0 trout
Crowley Lake	Last Saturday in April through July 31.	5 trout
Crowley Lake <i>continued</i>	August 1 through Nov. 15. Only artificial lures may be used. Minimum size limit: 18 inches total length. Closed Nov. 16 through the last Friday in April.	2 trout
McGee Creek downstream from Hwy. 395	Saturday preceding Memorial Day through Sept. 30. Closed the rest of the year.	5 trout
(A) Upper Owens River from Benton Crossing bridge (on Benton Crossing Road) upstream to Big Springs	All year. Only artificial lures with barbless hooks may be used.	0 trout
(B) Upper Owens River from Benton Crossing bridge (on Benton Crossing Road) downstream to Crowley Lake	Last Saturday in April through July 31.	5 trout
(B) Upper Owens River from Benton Crossing bridge (on Benton Crossing Road) downstream to Crowley Lake <i>continued</i>	August 1 through Nov. 15. Only artificial lures may be used. Minimum size limit: 18 inches total length. Closed Nov. 16 through the last Friday in April.	2 trout
Convict Lake	Last Saturday in April through Nov. 15. Closed the rest of the year.	5 trout
Hot Creek	All year. Only artificial flies with barbless hooks may be used.	0 trout
Lake Mamie, Lake Mary, Lake George, Twin Lakes	Last Saturday in April through Nov. 15. Closed the rest of the year.	5 trout
June Lake, Gull Lake, Silver Lake, Grant Lake	Last Saturday in April through Nov. 15. Closed the rest of the year.	5 trout
Rush Creek between Silver Lake & Grant Lake	Saturday preceding Memorial Day through Sept. 30. Closed the rest of the year.	5 trout
Lee Vining Creek from Lee Vining conduit downstream to Mono Lake	Saturday preceding Memorial Day through Sept. 30	2 trout per day, 4 in possession
Lee Vining Creek from Lee Vining conduit downstream to Mono Lake <i>continued</i>	Oct. 1 through the Friday preceding Memorial Day. Only artificial lures with barbless hooks may be used.	0 trout
Lee Vining Creek from Lee Vining conduit upstream	Last Saturday in April through Nov. 15.	5 trout per day, 10 in possession
Lee Vining Creek from Lee Vining conduit upstream <i>continued</i>	Nov. 16 through the Friday preceding the last Saturday in April. Only artificial lures with barbless hooks may be used.	0 trout
Ellery Lake, Tioga Lake, Saddlebag Lake	Open all year	5 trout per day, 10 in possession
Lundy Lake	Last Saturday in April through Nov. 15. Closed the rest of the year.	5 trout
Upper & Lower Virginia Lakes	Last Saturday in April through Nov. 15. Closed the rest of the year.	5 trout
Upper & Lower Twin Lakes - Bridgeport	Last Saturday in April through Nov. 15. Closed the rest of the year.	5 trout
Robinson Creek from US Forest Service boundary downstream to Upper Twin Lake, and between Upper and Lower Twin Lake	Saturday preceding Memorial Day through Sept. 30. Closed the rest of the year.	5 trout
Robinson Creek all other sections	Last Saturday in April through Nov. 15.	5 trout
Robinson Creek all other sections <i>continued</i>	Nov. 16 through the Friday preceding the last Saturday in April. Only artificial lures with barbless hooks may be used.	0 trout
Bridgeport Reservoir	Last Saturday in April through Nov. 15. Closed the rest of the year.	5 trout
East Walker River	Last Saturday in April through Nov. 15. Closed the rest of the year. Artificial lures only. Minimum size limit: 18 inches total length.	2 trout
West Walker River	Last Saturday in April through Nov. 15.	5 trout per day, 10 in possession
West Walker River <i>continued</i>	Nov. 16 through the Friday preceding the last Saturday in April. Only artificial lures with barbless hooks may be used.	0 trout
Topaz Lake	Open all year	5 trout per day, 10 in possession

New CDFW 2021-2022 fishing regulations: https://fgc.ca.gov/Regulations/2020-New-and-Proposed#3_00

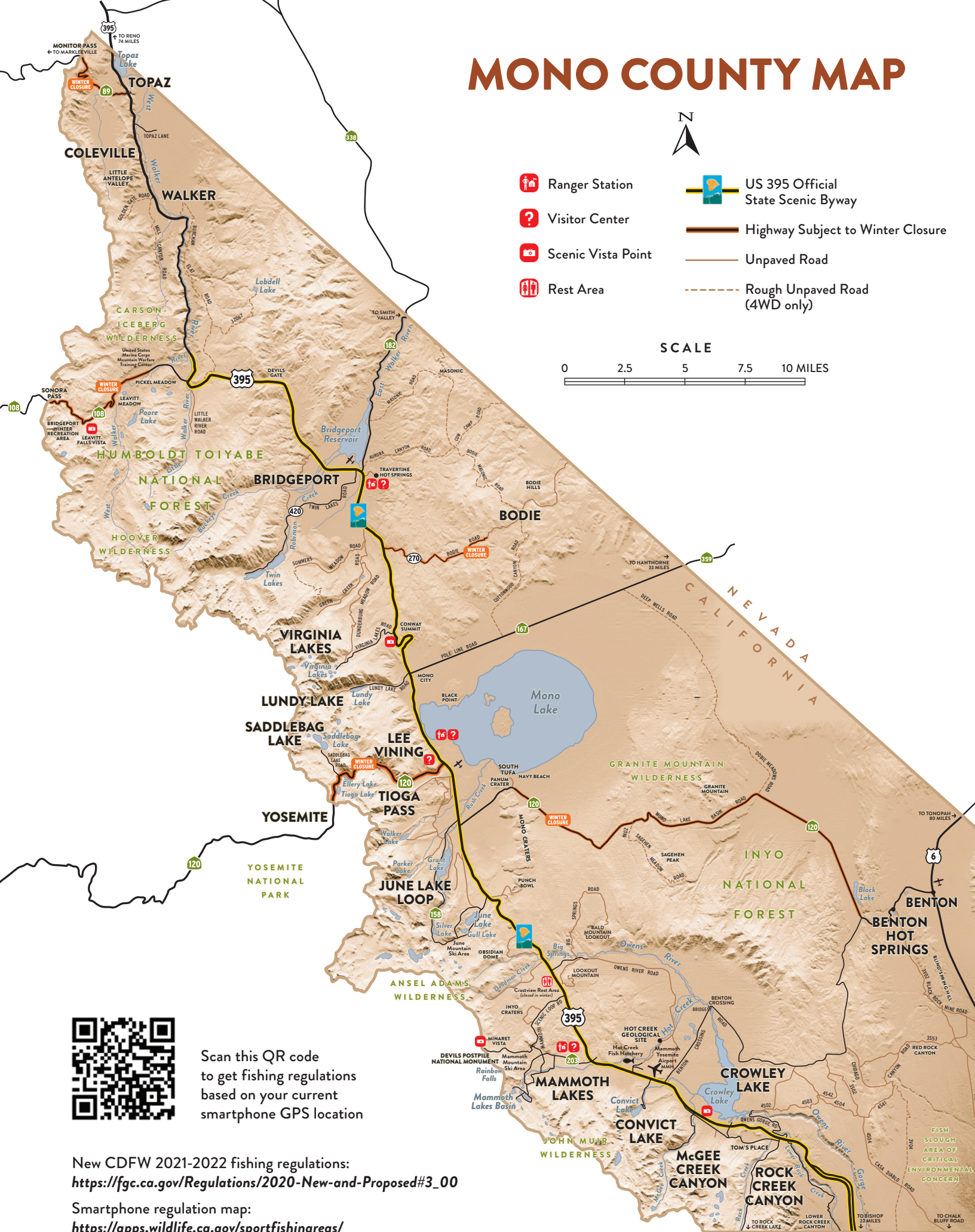
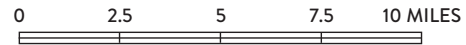
Smartphone regulation map: <https://apps.wildlife.ca.gov/sportfishingregs/>

MONO COUNTY MAP



-  Ranger Station
-  Visitor Center
-  Scenic Vista Point
-  Rest Area
-  US 395 Official State Scenic Byway
-  Highway Subject to Winter Closure
-  Unpaved Road
-  Rough Unpaved Road (4WD only)

SCALE



Scan this QR code
to get fishing regulations
based on your current
smartphone GPS location

New CDFW 2021-2022 fishing regulations:
https://fgc.ca.gov/Regulations/2020-New-and-Proposed#3_00

Smartphone regulation map:
<https://apps.wildlife.ca.gov/sportfishingregs/>