



Ride Guide Black Canyon to Warner (High) Point

Leave downtown Montrose and ride east gradually uphill 7 miles on Highway 50 to the Black Canyon turn-off. Turn left on highway 347 and begin a 6-mile climb to the entrance to Black Canyon National Park. The climb is steep for a mile, levels off briefly through pasture land on Bostwick Park and finishes with 6-7 percent grades to the entrance station.

Continue on the Park's Rim Road a mile to Gunnison Point Visitors Center. It's 6 miles from the Entrance Station to the turnaround at High Point. Pavement is good and the road twists and turns with rolling, moderate climbs. It offers spectacular views of the canyon at overlooks.

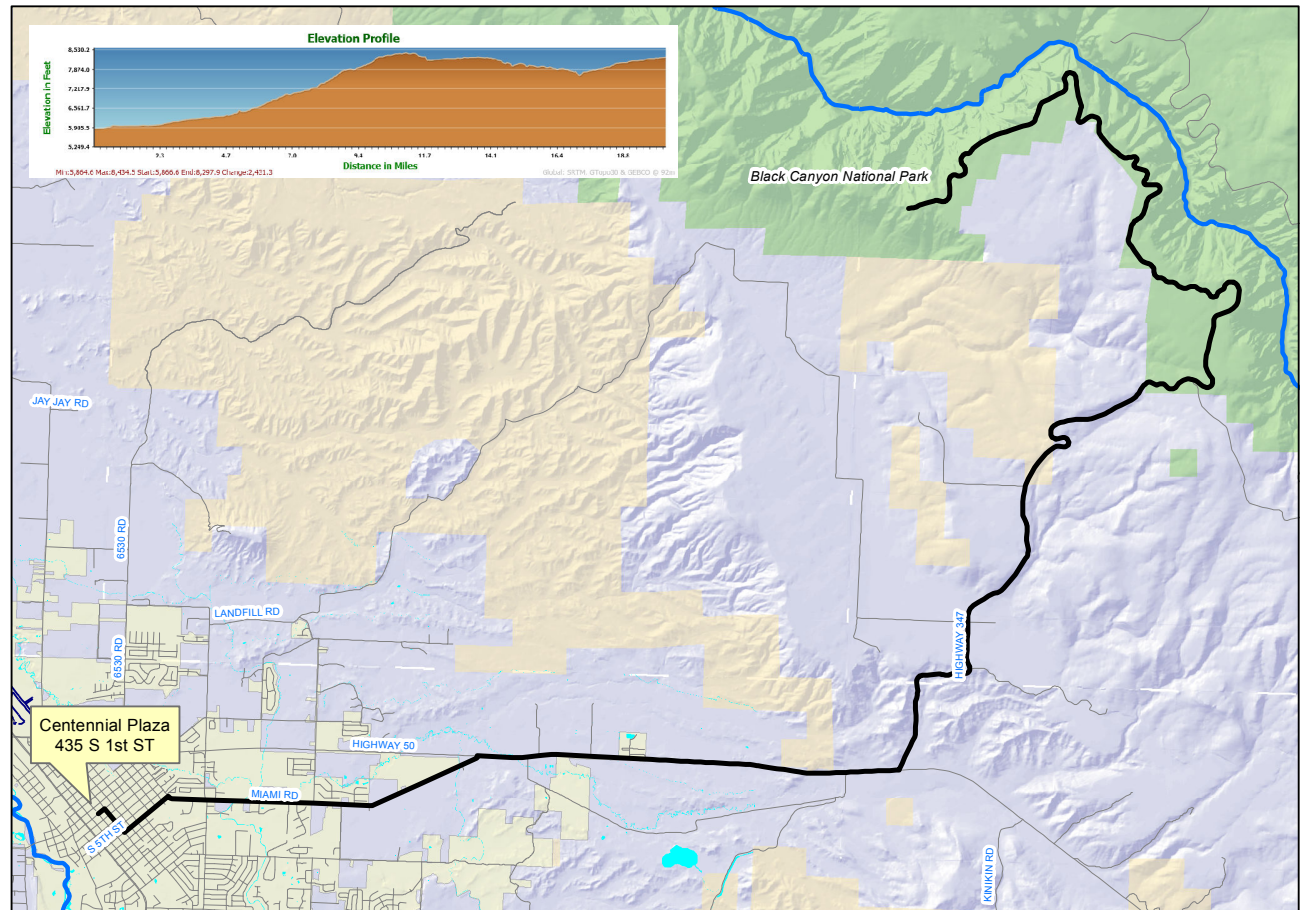
The descent back to Highway 50 is fast but not technical except for a steep, sweeping left-hander near the bottom. Caution is advised. Watch out for deer!

Distance: 40 miles

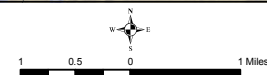
Elevation: 3500 vertical feet of elevation gain

Rating: Challenging

Notes: Entry fee for National Park. Water available at the Visitor Center.



**Black Canyon National Park
Montrose, CO**



www.cityofmontrose.org

