

# Shift your meeting into high gear

in New Braunfels

MEET  
in *New*  
*Braunfels*  
.com







Deep in the heart of the Texas Hill Country  
is where you'll find New Braunfels.

Founded in 1845 by German settlers, our town  
is overflowing with old-world heritage. Whether  
you're greeted with "Willkommen" or "Howdy,"  
you're always "Welcome" in New Braunfels.

What's Inside

Willkommen . . . . . 2

Accessibility . . . . . 3

Local Events . . . . . 4

New Braunfels at a Glance . . . 5

Civic & Convention Center . . . 6

Hotel Venues . . . . . 8

Event Venues . . . . . 9

Things to Do . . . . . 10

Start Planning!

Contact the New Braunfels  
Convention & Visitors Bureau  
to get the best start possible  
on planning a successful,  
stress-free event.

[donna@innnewbraunfels.com](mailto:donna@innnewbraunfels.com)  
1-800-572-2626

[MeetInNewBraunfels.com](http://MeetInNewBraunfels.com)

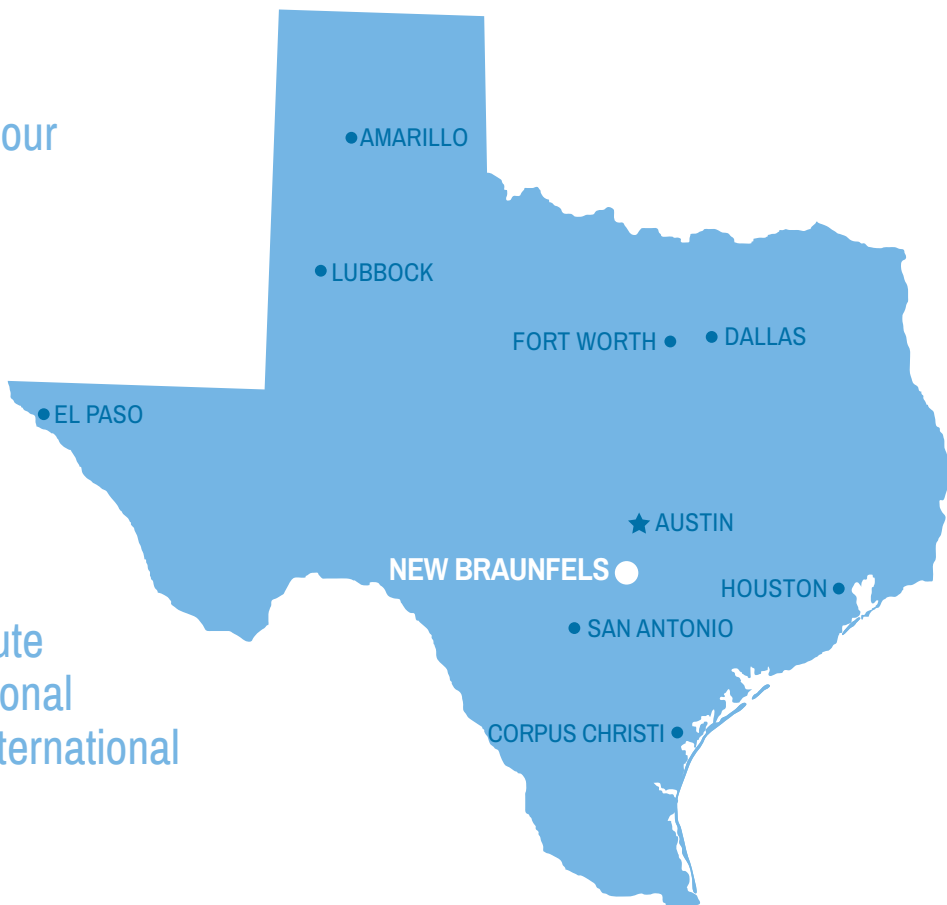


# Accessibility

New Braunfels is within a four-hour drive of over 12 million people.

San Antonio . . . . .	30 miles
Austin . . . . .	45 miles
Houston . . . . .	178 miles
Corpus Christi . . . . .	176 miles
Laredo . . . . .	196 miles
Dallas . . . . .	245 miles

New Braunfels is only a 25-minute drive from San Antonio International Airport and Austin-Bergstrom International Airport is 45 minutes north.



# Destination Services

Meeting planner life hack! Take advantage of the award-winning New Braunfels Chamber of Commerce website. It's your one-stop logistics shop for the coordination of lodging, venues, activities, and equipment rental. As one of the top vacation hotspots in Texas, New Braunfels boasts thousands of available beds, top-of-the-line amenities, and easy access from most major cities.



## Let us help plan the perfect meeting.

The New Braunfels Convention & Visitors Bureau (CVB) services staff will help you plan the perfect meeting and find the best places for everything from meeting, eating, and sleeping, to plugging in, working out, and logging on. Here's just some of the assistance we provide:

- » Local expertise and recommendations for resources
- » Site experience development and coordination
- » Custom pre-, post-, and spouse-activity planning and coordination
- » New Braunfels Welcome
- » Housing assistance
- » Unique team building
- » Public relations assistance
- » Social media support
- » Design of custom, destination-specific marketing materials

There's always something going on in New Braunfels. Enjoy Old Gruene Market Days, Wurstfest, Americana Music Jam, Gruene Music & Wine Festival, Folkfest, Texas Clay Festival, and 16 unique holiday events. Wurstfest is New Braunfels' ten-day salute to German culture, starting on the first Friday in November.

## Annual Events

### January

**Antique Market** Civic Center  
heritageeventcompany.com 918.619.2875

### February

**Troutfest** Lazy L&L Campgrounds  
grtu.org/troutfest/ 512.413.3301

### March

**North American Jewelry & Gift Show** Civic Center  
nashows.com/ info@nbshows.com

### April

**Model Railroad Jamboree** Civic Center  
newbraunfelsrailroadmuseum.org 830.625.2656

**Folkfest** Heritage Village  
nbheritagevillage.com 830.629.6904

### May

**Wein & Saengerfest** Historic Downtown  
weinandsaengerfest.com 830.608.2100, ext. 252

**Americana Music Jam** Gruene  
gruenetexas.com 830.625.7311

### June

**Concerts in the Park** Landa Park  
nbtexas.org 830.221.4350

### July

**Independence Day Patriotic Parade & Program**  
Historic Downtown 830.629.1572

### August

**Lone Star Gourd Festival** Civic Center  
texasgourdsociety.org 337.376.9690

### September

**Comal County Fair** Comal County Fairgrounds  
comalcountyfair.org 830.625.1505

### October

**Texas Clay Festival** Gruene  
texasclayfestival.com 830.629.7975

**Gruene Music & Wine Fest**  
gruenemusicandwinefest.org 830.629.5077

### November

**Wurstfest** Wursthalle  
wurstfest.com 830.625.9167

**Weihnachtsmarkt** Civic Center  
sophienburg.com 830.629.1572

**Downtown Christmas Tree Lighting**  
nbtexas.org 830.221.4350

### December

**Gruene Christmas Market Days/Lighting**  
gruenemarketdays.com 830.832.1721

**Wassailfest**  
nbtexas.org 830.221.4350



For more information about events and festivals, visit [PlayInNewBraunfels.com](http://PlayInNewBraunfels.com) for a detailed calendar.





# Meetings in New Braunfels At-a-Glance



AVERAGE HIGH 79°  
AVERAGE LOW 56°



32.2 MILES OF RIVERS



103 RESTAURANTS



FOUR-HOUR DRIVE OF MORE  
THAN 12 MILLION PEOPLE



27.5 MILES FROM NEAREST  
INTERNATIONAL AIRPORT

## Monthly Events

**Old Gruene Market Days**

(Starts in February)

[gruenemarketdays.com](http://gruenemarketdays.com)

Gruene

830.832.1721

## Weekly Events

**Farmers Market**

[nbfarmersmarket.com](http://nbfarmersmarket.com)

Downtown

830.629.2223





## Putting the “New” in New Braunfels

The New Braunfels Civic/Convention Center is 50,000 square feet of modernly updated meeting and event space. The airy, Hill Country architecture and harmonious design create a welcoming environment that almost disguises the facility’s form-meets-function practicality. The versatile setting is perfect for everything from industry conventions to breathtaking weddings.

The event and meeting spaces include a column-free exhibit hall, a beautiful ballroom, and five flexible meeting rooms. A shady courtyard with lush landscaping provides a perfect area for meeting breaks as well as the opportunity for an extension of overall space.

The facility includes wireless internet and all the state-of-the-art equipment and technology you could need for a dynamic, highly memorable presentation. At the New Braunfels Civic/Convention Center, out-of-town groups have the luxury of coming to the same lush Hill Country where Texans go for vacation.





## Capacities and Amenities

### Exhibit Hall

Theater ..... 1443 people      Classroom ..... 891 people  
 Banquet ..... 840 people      Reception ..... 900

Dimmable lighting, spotlights, lighted columns, polished concrete floor, extensive power supplies, 64'x43' permanent stage with spotlights, house sound, cyclorama, CD and DVD players, rear-mount projector, and hi-definition screen

### Ballroom

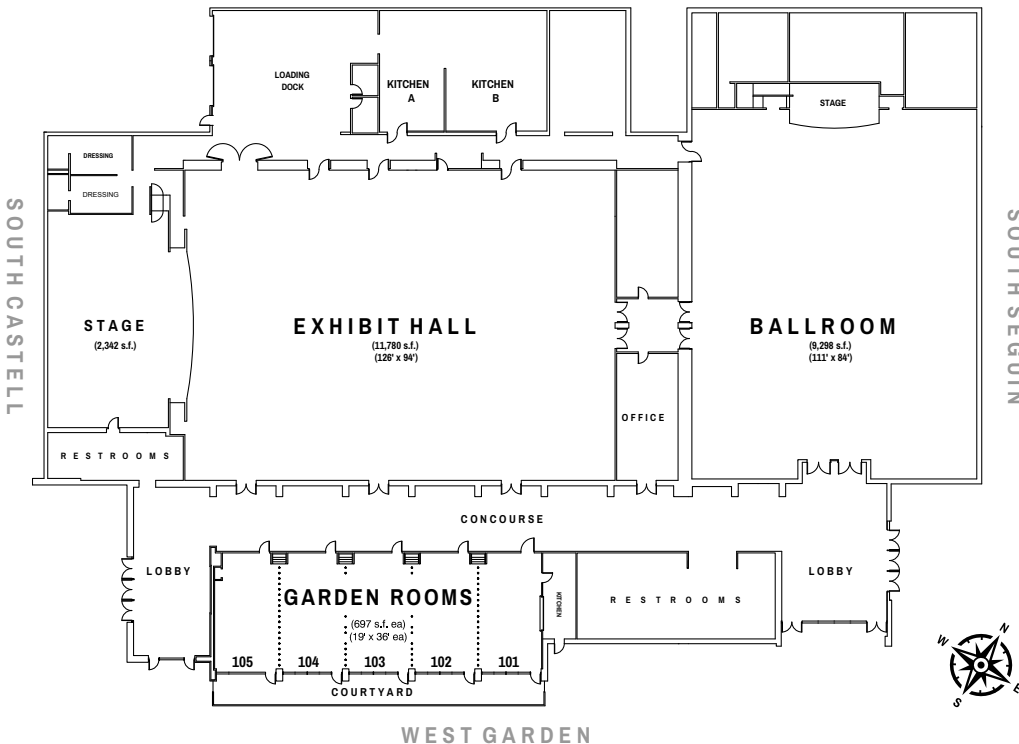
Theater ..... 1000 people      Classroom ..... 654 people  
 Banquet ..... 590 people

Hardwood flooring, dimmable lighting, 26'x12' permanent stage, house sound, DVD player, concealed projector and screen

### Garden Rooms

Theater ..... 65 people      Classroom ..... 36 people  
 Banquet ..... 30 people      U-Shape ..... 28 people  
 Conference ..... 28 people

Limestone columns, 52" LCD screens, courtyard access, projector and screen (can be continuous)



## Exhibit Hall

The 11,780-square-foot, column-free Exhibit Hall, perfect for trade shows and large events, is equipped with polished concrete floors, built-in audio/visual, large stage, and versatile lighting. Dressing rooms are adjacent for costume changes, offices, or bridal parties. The Exhibit Hall has direct access to a loading dock and professional kitchen.

## Garden Rooms

For ultimate flexibility, these five Garden Rooms can be used individually or combined to over 3,500 square feet. The Garden Rooms look into a beautiful, private courtyard for breaks, small receptions, or even wedding ceremonies. Extensive audio/visual equipment and attached kitchen ensure success for every event.

## Ballroom

The 9,288-square-foot Ballroom is appointed with an attractive wood floor, stage, and an extensive built-in audio/visual system, including projection, dimmable lighting, and sound. Convenient loading areas and a professional kitchen make the Ballroom a perfect room for your reception, large meeting, or convention.





# Hotel Venues

	MEETING ROOMS	TOTAL MEETING SPACE (SQFT)	THEATER-STYLE CAPACITY	CLASSROOM-STYLE CAPACITY	BANQUET CAPACITY	RECEPTION CAPACITY	AUDIO/VISUAL CAPABILITIES	BAR/LOUNGE ON-SITE
<b>BEST WESTERN INN &amp; SUITES</b> 1493 North IH-35	—	—	—	—	—	—	★	—
<b>COMFORT SUITES</b> 1489 IH-35 North • 877-755-2855 or 830-643-1100	1	725	40	40	40	40	★	—
<b>COUNTRY INN AND SUITES</b> 1483 IH-35 North • 830-310-7325	1	755	60	60	60	60	★	—
<b>COURTYARD BY MARRIOTT RIVER VILLAGE</b> 750 IH-35 North • 830-626-4700	5	6,676	250	250	250	250	★	★
<b>FAIRFIELD INN &amp; SUITES</b> 1465 IH-35 North • 830-626-3133	1	548	60	60	60	60	★	—
<b>FAUST HOTEL &amp; BREWING CO.</b> 240 South Seguin Avenue • 830-625-7791	1	—	—	—	—	—	★	★
<b>GRUENE MANSION INN</b> 1275 Gruene Road • 830-629-2641	1	—	—	20	—	20	★	★
<b>GRUENE RIVER HOTEL &amp; RETREAT</b> 1235 Gruene Road • 830-643-1234	—	—	—	—	—	—	—	—
<b>HAMPTON INN &amp; SUITES</b> 575 South State Highway 46 • 830-608-0123	1	625	40	40	40	40	—	—
<b>HILL COUNTRY COTTAGE AND RV RESORT 131</b> South Rueckle Road • 830-625-1919	3	—	250	250	250	250	★	—
<b>HILTON GARDEN INN</b> 1501 IH-35 North • 830-620-4200	2	2,336	150	150	150	150	★	—
<b>HOLIDAY INN EXPRESS</b> 1436 IH-35 North • 830-626-1234	1	320	30	30	30	30	—	—
<b>HOMEWOOD SUITES</b> 620 Oxford Drive • 830-627-4424	1	600	40	40	40	40	★	—
<b>HORSESHOE RIVERSIDE LODGE</b> 12381 FM 306 • 830-964-3600	—	—	—	—	—	—	—	—
<b>OLD MILL RESORT</b> 1554 Gruene Road • 830-387-5833	—	—	—	—	—	—	—	—
<b>PRINCE SOLMS INN</b> 295 East San Antonio Street • 830-312-5387	—	—	—	—	—	—	—	—
<b>RODEWAY INN</b> 1209 IH-35 North • 830-629-6991	—	—	—	—	—	—	—	—
<b>SLEEP INN &amp; SUITES</b> 1477 IH-35 North • 830-625-7700	1	336	20	20	20	20	—	—
<b>SURESTAY BY BEST WESTERN</b> 510 South State Highway 46	—	—	—	—	—	—	—	—
<b>THE RESORT AT SCHLITTERBAHN</b> 305 West Austin Street • 830-625-2351	—	—	—	—	200	—	★	—
<b>WINGATE BY WYNDHAM</b> 245 FM 306 • 830-515-4701	2	625	25	25	25	25	★	—



# Event Venues

	MEETING ROOMS	TOTAL MEETING SPACE (SQFT)	THEATER-STYLE CAPACITY	CLASSROOM-STYLE CAPACITY	BANQUET CAPACITY	RECEPTION CAPACITY	AUDIO/VISUAL CAPABILITIES	BAR/LOUNGE ON-SITE
<b>THE ALLEN FARMHAUS</b> 2606 FM758 • 830-358-3333	1	—	250	250	250	300	—	—
<b>THE CHANDELIER OF GRUENE</b> 1924 Bretzke Lane • 830-500-3032	1	12,000	500	500	500	500	—	—
<b>COLUMBUS CLUB ASSOCIATION</b> 111 Landa Street • 830-625-2279	1	—	—	—	320	—	—	—
<b>EMME SEELE FAUST LIBRARY</b> Sophienburg Museum 401 West Coll Street • 830-629-1572	1	—	50	50	50	75	—	—
<b>GRUENE ESTATE</b> 532 Rock Street • 830-609-8664	—	—	—	—	—	200	★	—
<b>GRUENE EVENT CENTER</b> 1259 Gruene Road, #100 • 830-624-6822	1	—	250	250	250	250	★	—
<b>JOHN NEWCOMBE TENNIS RANCH &amp; CONFERENCE CENTER</b> 325 Mission Valley Road • 830-625-9105	7	—	—	—	—	—	★	—
<b>LANDA PARK GOLF COURSE</b> 180 Golf Course Drive • 830-221-4340	1	—	100	100	100	100	★	★
<b>THE MALMSTEAD PAVILION</b> Sophienburg Museum 401 West Coll Street • 830-629-1572	1	—	50	50	50	100	—	—
<b>MCKENNA EVENTS CENTER</b> 801 West San Antonio Street • 830-606-9500	5	15,000	835	835	835	835	★	—
<b>MILLTOWN HISTORIC DISTRICT</b> 561 Oasis Street • 830-837-5480	3	—	200	175	175	175	★	—
<b>NEW BRAUNFELS CIVIC/CONVENTION CENTER</b> 375 S Castell Ave • 830-221-4011	7	55,000	1216	792	820	550	★	—
<b>OLD MILL RESORT</b> 1554 Gruene Road • 830-387-5833	1	8,500	350	350	350	350	★	—
<b>THE PALM CENTER</b> 6700 N IH 35 Frontage Rd • 830-627-2843	—	—	—	—	—	—	★	★
<b>VILLA AT GRUENE</b> 1190 Gruene Road • 830-625-9463	3	6,000	150	100	150	200	—	★
<b>VILLAGE VENUE</b> 2032 Central Plaza • 830-460-3501	3	15,000	475	250	400	450	★	—
<b>VOODOO TRAINING &amp; EVENT CENTER</b> 103 Gattuso Road, Suite 110	—	—	100	100	100	100	—	—

For help with hotel blocks, tours, or planning group activities, call 830-608-2812.





# Group Dining Options

Dine on Texas Cuisine along the banks of the Guadalupe, gobble down delectable Tex Mex, and linger over authentic German dishes all in one little berg. Whatever you have a hankerin' for, we deliver. Oh yes, don't forget a majority of our restaurants in New Braunfels offer catering.



With so much to offer,  
you are bound  
to find the perfect  
New Braunfels restaurant  
to satisfy your group!

## Quench Your Thirst for Fun!

### Schlitterbahn

Travel Channel calls Schlitterbahn America's number one waterpark for good reason. The park's high-tech attractions and natural Comal River setting have made it the most popular summertime waterpark in the country. Schlitterbahn, which loosely translates from German into "slippery road," features more than 40 attractions.

### Texas Ski Ranch

This extreme water recreation complex features water skiing and wake boarding without a boat, plus skateboarding facilities.

**Guadalupe River** Best known for attracting generations of "tubers" for a refreshing float to beat the summer heat, the Guadalupe also lures canoe and kayak enthusiasts to peaceful paddling and exciting whitewater rapids. Nature lovers and outdoor enthusiasts flock to camps and resorts along the tree-lined banks of the river.



### Comal River

The Comal enjoys a unique claim to fame: it is the shortest river in the United States. The 2.5-mile-long Comal starts at one of the largest natural springs in Texas and its broad, slow flow makes it ideal for a quiet tubing experience, while the clear spring waters are perfect for snorkeling and diving.

### Canyon Lake

Spectacular views of the Texas Hill Country and 80 miles of coastline make this a great destination for campers, vacationers, and day trippers. Water activities range from quiet and reflective sailing and fishing to exciting water skiing and parasailing.



### Trout Fishing

New Braunfels is one of the very few trout hot spots in the southern United States. The cold water of the Guadalupe makes it an ideal home for the trout which are stocked in the river several times a year. This attracts fly fishing enthusiast from across the nation.



# Adventure on Dry Land... or Below It.

**Natural Bridge Caverns** Visitors to the state's biggest and best show cave can expect an otherworldly experience in the series of limestone formations. In addition to walking tours, the Adventure Cave Tour offers a more daring exploration of undeveloped portions of the caverns.

**Natural Bridge Wildlife Ranch** A Texas-style African safari experience with more than 50 different species from antelope to zebras. In addition to the main safari route, which lets you see exotic animals up close from your car windows, the ranch also offers a walking safari route and a kid-friendly petting zoo.



## Bring Your Dancing Shoes

**Gruene** This restored village plays host to a number of artists, artisans, potters, boutiques, and restaurants. Gruene Hall, one of the oldest dance halls in Texas, features singer/songwriters like Willie Nelson, Robert Earl Keen, and Pat Green, as well as a mix of national touring acts and local and regional up-and-comers.

**Texas Music** Dance halls like Anhalt, Watering Hole Saloon, Gruene Hall, River Road Ice House, and Whitewater Amphitheatre – plus a variety of honky tonks – feature traditional country and Americana. KNBT Radio, the top Americana station in the nation, airs Texas music throughout the region and on the Internet.

## Where the Old Country Meets the Hill Country

### Downtown New Braunfels

Walk through downtown New Braunfels, and you'll see more than 150 years of German influence. Murals throughout the city illustrate the colorful history.

**Museums** History buffs have several intriguing museums to visit. The New Braunfels Conservation Society has restored and furnished nine buildings (ca. 1849 – 1870) to form Conservation Plaza. The Museum of Texas Handmade Furniture preserves the work of the early German craftsmen and artisans. The Sophienburg Archives and the Sophienburg Museum also preserve the history of Texas' German settlers. The McKenna Children's Museum will delight the wee ones with hands-on adventure. The Railroad Museum is dedicated to the preservation of railroad artifacts and education.

**Shopping** Diverse and eclectic shops are found in Historic Downtown New Braunfels, the Gruene Historic District, and the huge outlet malls along Interstate 35. We offer antique shops, boutiques showcasing Texas craftsmen, and other unique establishments. Top off the evening wining and dining in New Braunfels' best restaurants.



Every year, New Braunfelsers far and wide construct boats and take them down the infamous Comal River tube chute. That in itself is a challenge. But these fearless sailors negotiate the channel in boats made of cardboard, duct tape, and hope. Prizes go to the boats that survive the best, and the best-dressed sailors and boats.





MEET  
in *New*  
*Braunfels*  
.com

## Start Planning!

Contact the New Braunfels  
Convention & Visitors Bureau  
to get the best start possible  
on planning a successful,  
stress-free event.

[donna@innewbraunfels.com](mailto:donna@innewbraunfels.com)

1-800-572-2626

[MeetInNewBraunfels.com](http://MeetInNewBraunfels.com)