

A winter scene with snow-covered evergreen trees and a sleigh pulled by three horses. The sleigh is red and has a driver and passengers. The horses are brown and white. The scene is set in a snowy forest with tall trees covered in snow.

I ♥ NY[®]

Winter Guide



FIND WHAT YOU
LOVE
IN NEW YORK STATE

ILOVENY.COM

CONTENTS

- 4 SNOW MUCH FAMILY FUN
- 12 SNOWTUBING
- 13 ICE SKATING
- 14 DOWNHILL SKIING
- 19 APRÈS SKI
- 20 DOWNHILL SKI AREA GRIDS
- 22 CROSS-COUNTRY SKIING
- 24 SNOWSHOEING
- 26 CROSS-COUNTRY SKI AREA GRIDS
- 28 NEW YORK STATE SKI AREAS MAP
- 30 SNOWMOBILING
- 32 LODGING & DINING
- 34 PERFORMING ARTS
- 35 SHOPPING
- 36 WINTER EVENTS

Show your ❤️ for New York State.

-  iloveny.com
-  facebook.com/iloveny
-  twitter.com/i_love_ny
-  instagram.com/iloveny
-  pinterest.com/iloveny
-  youtube.com/officialiloveny
-  iloveny.com/blog

ALL PHOTOGRAPHY BY DARREN MCGEE/NYSDED
UNLESS OTHERWISE CREDITED.

COVER: Highland Forest Sleigh Ride, Fabius.
Courtesy Onondaga County Parks

THIS SPREAD: Whiteface Lake Placid, Adirondacks.
Courtesy ORDA | © Jacob Allen Sporn





FIND WHAT YOU LOVE IN NEW YORK STATE



When the snow falls, new adventures begin. Ski an Olympic mountain, snowshoe powder-filled forests, or ride a dog-sled across a frozen lake. With breathtaking trails, world-class museums, vibrant cities and picturesque villages, there is something for everyone.

Plan your escape and find what you love in New York State.

Thunder Mountain Dog Sled Tours | Lake Placid

FAMILY FUN

Whether it's spending a day on the slopes, frolicking at a winter carnival, checking out a museum or going on a big city adventure, families find New York offers a wide variety of awesome places to reconnect and make winter a season to remember.

BIG CITY ADVENTURES

Time-honored kid pleasers in New York City include the **American Museum of Natural History's** dinosaur halls and spectacular space shows at the Hayden Planetarium. **The Intrepid Sea, Air & Space Museum**, a former battleship, delights with drone demos, virtual flights and family overnights.

Times Square's **National Geographic Encounter: Ocean Odyssey** is a new, immersive entertainment experience that harnesses groundbreaking technology to transport guests on an underwater journey with the ocean's mightiest of creatures.

Generations bond over favorite traditions: **Radio City's Christmas Spectacular**, the **Holiday Train Show** at **New York Botanical Garden**, family pictures by **Rockefeller Center's** giant Christmas tree, and NYC Ballet's *The Nutcracker* at **Lincoln Center**.

The **Brooklyn Children's Museum** lets kids have fun while learning (sneaky!) at interactive exhibits like "World Brooklyn," a pint-size cityscape lined by faux stores where young'uns can immerse themselves into multi-cultural experiences that foster curiosity, creativity and lifelong love of learning.

A playground for kids' minds, the **Staten Island Children's Museum** includes super-size board games, a firsthand look at a bug's life and replicas of different ecosystems. It's not all pretend, though: The museum's "House About It" exhibit allows visitors to work a real drill, and "Portia's Playhouse" is stocked with costumes so little actors can get down to thespian business.

TRAVEL BY SEA, SKY & LAND

It's a watery world of fun year-round at **Long Island Aquarium**. Indoors, explore an Amazon rainforest and go eye-to-eye with fascinating creatures like a giant octopus and bobbing seahorses. Feed sharks, pat a stingray and take some sea lion selfies. Everyone gets on-board to watch wildlife splash and sun on seal cruises.

Future astronauts are inspired at the **Cradle of Aviation Museum**. Young aviators command a space shuttle, build roaring rockets and explore the moon before settling down for storytime. Kids can touch everything they see at the **Long Island Children's Museum**. From interactive exhibits to art programs and theater, it's all designed to delight children.

BE COURAGEOUS

With over 60 fire engines and countless artifacts, Hudson Valley's **FASNY Museum of Firefighting** is an extraordinary museum for all things firefighting. Activities for families include creative play on selected fire engines, hands-on interactives, including the popular bucket brigade activity, a virtual fire engine driving activity, the new Jr. Firefighter Challenge and the Cabot/McCadham Discovery Room.

Looking for uplifting adventures? Flyers age 3 and up have a blast at **iFly Westchester's** indoor skydiving center. There's no jumping or falling, and no experience needed— just float on a wall-to-wall cushion of air. Events include All Abilities Nights for kids with special needs.

Long Island Aquarium | Riverhead



iFLY Indoor Skydiving | Yonkers





Recreation Park Carousel | Binghamton

©Courtesy City of Binghamton Parks & Recreation



Santa's Workshop | Wilmington



Olympic Sports Complex | Lake Placid

©Courtesy ORDA/Dave Schmidt

COLORFUL CAROUSELS

Enclosed in glass at **Brooklyn Bridge Park**, **Jane's Carousel** sparkles and twirls all winter. The Merry-Go-Round at **Bear Mountain State Park** features hand-painted landscapes and 42 hand-carved native animals, from black bears to foxes and swans. It spins in a pavilion beside the cozy Bear Mountain Inn, weekends and holidays all winter. Families can also enjoy snowshoeing, cross-country skiing, ice-skating and a zoo.

Take a ride on the colorful, full-size 1912 carousel at the **New York State Museum** in Albany. Exhibits highlight natural and cultural history, from the Adirondacks to an Iroquois longhouse and antique fire engines.

On Saturdays in December, **Binghamton's Recreation Park** hosts free holiday rides on a 1925 beauty with 60 jumping horses, chariots and the original Wurlitzer organ. Nearby, learn about carousels at the **Roberson Museum & Science Center**.

Open through December 30, the **Herschell Carrousel Factory Museum** in North Tonawanda houses two vintage carousels ready to ride, as well as history exhibits and classic band organs.

PEAK ADVENTURES

US News Travel named the **Adirondacks** a top 10 best winter family vacation destination. Whether you choose thrills like skiing, snowshoeing, bobsledding and dogsledding, or exploring charming villages amid breathtaking scenery—there's something to peak.

Yuletide Family Weekends, in November and December at **Santa's Workshop** in NY's North Pole let children visit Santa and Mrs. Santa in their very own home. Be entertained and amused by Frosty the Snowman, Rowdy the Reindeer, and members of the Mother Goose Guild, as they perform throughout the day with puppet shows and musical reviews. Santa's helpers at area host lodges capture the family Christmas spirit with trim-a-tree parties where the kiddies create their own ornaments as Rowdy the Reindeer, Santa's official tree inspector, encourages participation and frivolity. Even the jolly old elf himself might stop by to spread some holiday cheer.

Two-time host of the Winter Olympics, Lake Placid thrills with mighty **Whiteface Mountain** and fantastic cross-country trails. Thrill-seekers age 7 and up can bobsled with professional drivers at the **Olympic Sports Complex**.

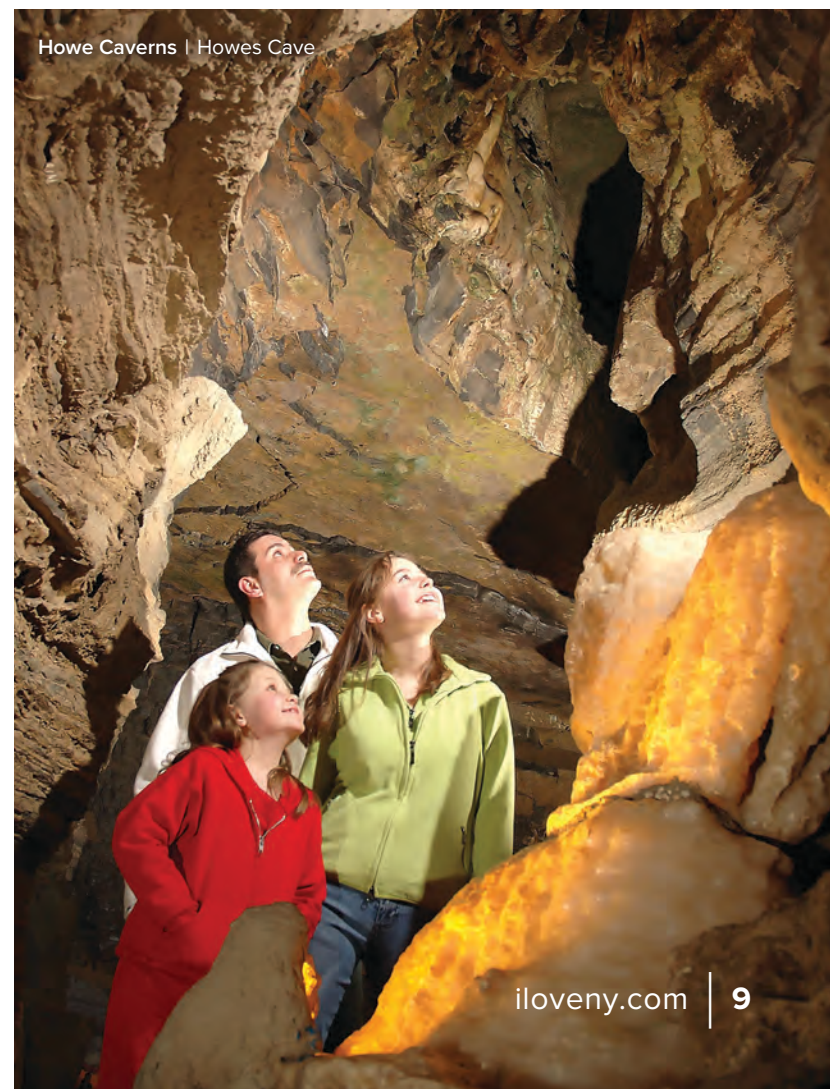
Learn about the Miracle on Ice at the **Lake Placid Olympic Museum** and speed skate around the oval at the **Olympic Center**. Save big with an Olympic Sites Passport. The **Lake Placid Toboggan Chute**, a 30-foot-high converted ski jump, rockets riders down ice-covered chutes onto frozen Mirror Lake. Another unique experience on the lake, **Thunder Mountain Dog Sled Tours** delight the whole family.

GO UNDERGROUND

In Central New York, an elevator takes you down to **Howe Caverns**, an ancient geological wonder where families explore fascinating landscapes of limestone corridors and massive boulders, 156 feet below the earth. Howe ranks in the Best 8 Amazing American Caves.

STEP ABOARD!

Live the magic as you listen to the classic story **The Polar Express**, sing carols and enjoy hot chocolate and cookies served by dancing chefs. Trains to the "North Pole" depart from Utica, Kingston and Medina. Trolley rides depart from Riverhead and Southampton. Pajamas are a must for children of all ages!



Howe Caverns | Howes Cave



FROSTED FALLS & FUN

Did you know **Niagara Falls State Park** is open every day of the year? Winter's the coolest time to see Niagara Falls—a wondrous sight with glistening ice flows, lighted in rainbow colors at dusk. Nearby, Buffalo's newest **Canalside** attraction, **Ice Bikes of Buffalo**, lets you ride on ice. Even people who aren't great on skates can pedal and steer around the rink on these stable bikes, just like taking a regular bike ride.

SEEMS LIKE OLD TIMES

Cuddle up as sleighbells ring and beautiful draft horses carry you through Chautauqua's picturesque Victorian village. Bobsleds glide on weekends, December through February. Costumed drivers parade in the **Currier & Ives Sleigh Rally** in January.

Rochester's **Strong Museum of Play** lets kids ride on a train, step into life-size pop-up books and play in a retro arcade. Re-live happy memories at the National Toy Hall of Fame. In Cooperstown **The Farmers' Museum** hosts December Candlelight Evenings, with old-fashioned games, caroling and sleighrides. Nearby, explore history through America's national pastime at the **National Baseball Hall of Fame**.

ZOO-TOPIA

In zoos from the Bronx to Buffalo, winter events abound and fur-coated snow leopards, monkeys, sheep, and even lions, tigers and bears love to play in and outside!

At the **Bronx Zoo**, see the big bears roam, watch the sea lions swim, and then hop into an indoor exhibit to warm up. Transport yourself to the rainforest; the Asian Jungle suits otters, gibbons, and 800 other creatures, just as they would in the wild.

Bailiwick Ranch & Animal Park in Catskill has exotic animals from prairie dogs to Bengal tigers, a petting zoo, and horseback riding on scenic mountain trails.

Rent snowshoes at the **Utica Zoo** and follow trails to meet over 200 animals. **Rosamond Gifford Zoo** in Syracuse, open 362 days a year, presents cool events like Snow Leopard Days in February. In Watertown, join **Thompson Park Zoo's** popular Wild Tots program. Beautiful creatures including polar bears are active all winter at the **Buffalo Zoo**.

INDOOR WATERPARKS

Rated a top US Waterpark Resort, Cascades at **Greek Peak Mountain Resort** boasts 500 feet of waterslides and a wild wave pool. Parents love the Waterfalls Spa.



Along with family-size suites, Lake George's **Six Flags Great Escape Lodge** has a huge indoor waterpark with multi-level slides, bucket soakers and a lazy river. **Palm Island Indoor Waterpark** in Batavia has two 24-foot-high enclosed slides—one streams outside the building and then runs back inside. Along with a children's lagoon, there's even a relaxing hot tub for the grown-ups.

MOUNTAINS OF FUN

Across New York, over 50 ski centers have trails, parks and lessons for all levels of skiers. Nearby or on-site, mountain resorts extend the fun with cross-country trails, sleighrides, tubing and adventure parks, and lively events. Accommodations range from cozy lodges to full-service slope-side resorts with activities for children, sumptuous dining and spas to rejuvenate the parents. For information on ski areas, budget-friendly packages, and the **I SKI NY Free for Kids** 3rd and 4th grade program, see iskiny.com.

Nestled in the Shawangunk Mountains, Hudson Valley's **Pinegrove Dude Ranch** brings families together for Old West-style adventures. Whoop it up with wagon and trail rides, snowtubing, skating, tasty meals and campfire sing-alongs with s'mores. Nearby **Rocking Horse Ranch Resort**, rated *Family Vacation Critic's* 2017 favorite hotel and *TripAdvisor's* #1 all-inclusive US resort, also ponies



up with ski lessons and an indoor waterpark where it's always 85° as families splash, slide and ride the 250-foot-long flume. The **Mohonk Mountain House**, another Hudson Valley gem, was rated a World's Best Family Hotel by *Travel+Leisure*.

In the Catskills, **Hunter Mountain** boasts the longest, fastest and highest zipline canopy tour in North America and the second largest zipline in the world. **Windham Mountain** features snowtubing and a kids' snowmobile park.

Whiteface Lodge in Lake Placid, rated one of the World's 5 Best Old-School Ski Resorts by *Fodor's*, combines luxury with kid-friendly amenities like a game room, bowling alley and heated indoor-outdoor pool. There's also a theater, skating rink, pristine trails and evening bonfires.

Kids rule at **Holiday Valley** in Ellicottville, rated a Top 2 Kid Friendly Resort in the East by *SKI* magazine. Enjoy children's programs and a zig-zagging mountain coaster. In the Finger Lakes, **Greek Peak Mountain Resort's** adventure center challenges families with bungee-trampolines, fat bikes, ziplines and snowtubing.

There's so much more to explore — for details and additional information on family friendly events, attractions and accommodations, visit iloveny.com ❤️



Snowtubing is fun for all ages. It's a great activity for families, friends, singles and couples. No skill or gear is required. Tubing parks provide the tubes, lifts, hills and snow—everything you need for a day, or night, of fast-sliding fun!

HUDSON VALLEY

Mount Peter, *Warwick*. 90 minutes from Manhattan. Magic carpet lift.

THE CATSKILLS

Holiday Mountain, *Monticello*. Multi-lanes, tow lift; tube chute for smaller kids. Closed Monday, except Holidays.

Hunter Mountain, *Hunter*. 20 chutes, 1,000 feet long; mini tubing park for smaller kids. Carpet lift.

Plattekill Mountain, *Roxbury*. Two snowtubing lanes, tow lift; night tubing.

Windham Mountain Adventure Park, *Windham*. Eight 650-foot lanes, 2 tows. Day and night.

CAPITAL-SARATOGA

Willard Mountain Tubing Park, *Greenwich*. Snow tubing park; lodge, lift.

THE ADIRONDACKS

Maple Ridge Snow Park, *Lowville*. Eight lanes; 100-foot vertical. Tow-lift.

Oak Mountain Ski Center, *Speculator*. Multi-lanes; tow. Day.

Titus Mountain Snowtubing Park, *Malone*. Multi-lanes; lift. Day and night tubing.

Tubby Tubes, *Lake Luzerne*. Nine lanes. Two snow coasters; night-lights.

West Mountain Tubing Park, *Queensbury*. Six lanes; four: 65-foot vertical drop, two: 100-foot verticals. Tows.

1000 ISLANDS-SEAWAY

Dry Hill Ski Area, *Watertown*. Fireside lounge. Day and night.

CENTRAL NEW YORK

Taberg Tower Tubing, *Taberg*. Four lanes, 2 luge runs. Tow lift. Double tubes.

Woods Valley Tubing Park, *Westernville*. New park: 600-foot lanes, magic carpet lift, night-lighting.

FINGER LAKES

Four Seasons Golf & Ski Center, *Fayetteville*. Eight lanes; night-lighting. East of Syracuse.

Glacier Ridge, *Spencerport*. 1,000-feet; three lanes, wonder carpet lift, snowmaking. Friday nights; weekends and school breaks. West of Rochester.

Greek Peak Adventure Center, *Cortland*. 15 lanes, 900 feet long; night-lights.

CHAUTAUQUA-ALLEGHENY

Holiday Valley Tubing, *Ellicottville*. 22 lanes, 100-foot vertical. Tows; night-lights.

Peek'n Peak Resort, *Clymer*. Snowtubing arena; 7 lanes, magic carpet lift.

Skate at rinks, state parks, ski resorts and frozen lakes. Many venues offer rentals, refreshments and lessons.

NEW YORK CITY

Bryant Park Winter Village, *Manhattan*. Free skating; rentals, lockers, lessons, and events; glide or a spin under the stars.

Prospect Park, *Brooklyn*. Two rinks on 585 scenic acres. Events, food carts.

Rockefeller Center, *Manhattan*. One of NYC's most celebrated traditions.

Central Park/Trump-Wollman Rink, *Manhattan*. Glide across the ice with the city skyline in the background.

LONG ISLAND

Harborfront Park, *Port Jefferson*. Waterfront rink in a village of charming shops and cozy cafes.

HUDSON VALLEY

Bear Mountain Ice Rink, *Bear Mountain*. Ice-skating beside the Bear Mountain Inn and carousel.

Mohonk Mountain House, *New Paltz*. Covered rink at a Victorian lakeside castle named America's #1 Resort Spa by *Condé Nast Traveler*!

THE CATSKILLS

Villa Roma Resort, *Callicoon*. A top family resort offers ice-skating, tube run, skiing and ski school.

Windham Mountain Adventure Park, *Windham*. Family fun, day and night. 120' by 60' rink; café.

CAPITAL-SARATOGA

Empire State Plaza Ice Rink, *Albany*. Free skating on a reflecting pool that's transformed into a rink! Skate rentals available.

Saratoga Spa State Park, *Saratoga Springs*. Ice-skating, snowshoeing and cross-country skiing.

THE ADIRONDACKS

Lake George Winter Carnival, *Lake George*. Weekend in February include ice-skating, fishing and more.

Olympic Speed Skating Oval, *Lake Placid*. Olympic Sports Complex, site of the 1932 and 1980 Winter Olympics. National and international competitions and USA Hockey.

1000 ISLANDS-SEAWAY

Thompson Park, *Watertown*. Olmsted-designed gem: skating, sledding and cross-country ski trails.

CENTRAL NEW YORK

Glimmerglass State Park, *Cooperstown*. Winter sports: ice-skating, sledding and cross-country ski trails.

FINGER LAKES

Clinton Square, *Syracuse*. Open-air skating downtown, day and night.

Highland Park, *Rochester*. Iconic Olmsted-designed urban retreat features Lily Pond, a natural rink.

GREATER NIAGARA

DeVeaux Woods State Park, *Niagara Falls*. Ice-skating rink in an old-growth forest.

Hyde Park Ice Pavilion, *Niagara Falls*. Open ice-skating; picturesque scenery.

The Ice at Canalside, *Buffalo*. Take a spin on the canals of the downtown waterfront.

CHAUTAUQUA-ALLEGHENY

Allegany State Park, *Salamanca*. Ice-skating, ice-fishing, and other winter sports.



MORE SKI MOUNTAINS THAN ANY OTHER STATE

Bristol Mountain Ski Resort | Canandaigua

With more than 50 downhill ski areas, New York State has great skiing within an hour of all our major cities. Getting to the mountains is easy; less travel time means more time on the slopes!



Windham Mountain Resort | Windham

Ski an Olympic mountain or hit the bunny trail. There's terrain to suit every level, from beginner to black diamond. From **Hunter Mountain** in the Catskills to **Holiday Valley** in western New York, many resorts offer slope-side lodging for easy ski-in/ski-out access. Most have ski schools and kids' programs along with cozy lodges and great dining options. Nighttime skiing and snow-tubing add extra hours of fun.

Whiteface Lake Placid, a two-time Olympic site in the Adirondacks, boasts the greatest vertical in the East. Ski and ride with amazing views of pristine lakes, forests and 45 High Peaks.

Other nearby Adirondack sky-high resorts include **Gore Mountain**, **West Mountain**, **Titus Mountain**, **Oak Mountain Ski Center**, **McCauley Mountain Ski Area** and **Snow Ridge**, located in the middle of the Tug Hill Plateau, benefits from mighty Ontario's lake-effect snow.

In the Catskills, both **Hunter** and **Windham Mountain** have 1,600-foot verticals, 50+ trails, expansive snowmaking and night-lighting. **Belleayre Mountain** offers budget-friendly ski-and-stay packages. It has a big 1,400-foot vertical, yet is small enough to keep it cozy for families. **Villa Roma**, rated a Top 10 US Family Resort, has skiing, boarding and tubing on-site.

First time skiing or snowboarding? In the Hudson Valley, **Mount Peter** offers free lessons on weekends. **Catamount Ski Area** has seven lifts, a 1,000-foot vertical, terrain parks and night skiing. In the Capital-Saratoga region, trails and terrain parks at **Maple Ridge**, **Willard** and **Royal Mountain** range from novice to challenging.

Dry Hill Family Ski & Tubing Area, in the 1000 Islands region, has day and night skiing and boarding—plus a fantastic snow-tubing center.



Belleayre Mountain Ski Center | Highmount



Gore Mountain Ski Resort | North Creek



Mount Peter Ski Area | Warwick



Greek Peak Mountain Resort | Cortland



Peek'n Peak Resort | Clymer

©Courtesy Peek'n Peak Resort



West Mountain | Queensbury

Premier slopeside resorts in the Finger Lakes like **Bristol Mountain** and **Greek Peak** have treed glades and super steeps offering diverse options morning through nighttime.

Central New York's smaller-size **Val Bialas Sports Center** has five trails, a zippy terrain park, a tubing hill and bright nightlights.

Western New York's **Holiday Valley**, rated a Top 3 Resort by *SKI* magazine, has 58 slopes, plus 13 lifts to get you to the top fast. On-slope, the Inn at Holiday Valley is only a mile from the lively village of Ellicottville. Other resorts in Chautauqua-Allegheny, one of New York's snowiest regions, include **Peek'n Peak**, **HoliMont** and **Swain Resort**. Greater Niagara's **Buffalo Ski Club** and **Kissing Bridge** are just a half-hour drive from Buffalo.

The powder is fresh and lifts are running faster and smoother than ever. To extend the ski season, abundant natural snow gets a boost from state-of-the-art snowmaking. With so many fantastic ski destinations within easy reach, New York has everything you need for a perfect ski getaway!

See listings on pages 34 and 35 for details on downhill Ski Areas of New York. To hear the latest ski conditions call the I LOVE NY Snow Phone: 800/CALL-NYS or visit iloveny.com and iskiny.com for additional information.

Ride the Rails to Ski Trails

Metro North's Ski Train runs from New York City to **Thunder Ridge Ski Area** in the Hudson Valley. Prices include round-trip train fare, lift tickets and free shuttle to the resort, a mile from the Patterson, NY station. Overnight packages are available. Get tickets for the Thunder Ski package at NYC's Grand Central Station or online: mta.info ♥

Near every ski area in New York, friendly villages and towns offer great restaurants, clubs, galleries, shops or other attractions. Relax, play, dine or dance the night away!

In the Adirondacks **Whiteface Lake Placid's** off-hill activities are tops, rated #1 by *SKI* magazine for over 25 years! Main Street is lined with friendly shops, restaurants and pubs. Visit the **Taste NY Café** in Whiteface's sunny main lodge to fuel up with local products from cheese and charcuterie to fresh-baked pastries. Entertainment runs from dogsled rides to bobsledding, ice-skating and watching world-class skiers fly from towering jumps at Olympic sites.

SKI magazine rated **Holiday Valley** in Chautauqua-Allegheny #3 for après-ski activities. Nosh on pub grub at **Ellicottville Brewing Company**. *Skiing* magazine raves, "If Norman Rockwell ever painted a ski town, he'd have chosen Ellicottville." The Victorian-era village combines a cool cosmopolitan vibe with a warm, homey atmosphere that welcomes families.

From antiquing to zip-lining, the Catskills offer diverse off-slope fun. Family-friendly **Hunter Mountain** also rates #1 on *Thrillist's* list of America's best party mountains. **Slopes** nightclub, a nearby hotspot, parties *après après*. Relax at **Scribner's Catskills Lodge** with yoga classes or cocktails by the fire. Minutes from **Belleayre Mountain**, dine at the cozy **Pine Hill Arms**. Après ski at **Windham Mountain**, warm up in **Mulligan's Pub**, have a blast at the **Adventure Park** or unwind at **Alpine Spa**.

Off-slope options in the Finger Lakes include **Toggenburg Mountain's** family-favorite **Foggy Goggle** restaurant, cocktails in **Bristol's** Satellite Lounge and mountain coaster rides or local drafts at **Greek Peak Resort**. Area wineries host great events all winter, visitors can purchase wine trail passports as an affordable way to enjoy many of the participating wineries.

After skiing in the Hudson Valley, spend the night in the big city. From **Mount Peter Ski Area** it's only an hour's drive to New York City. Only in New York can you ski all day and take in a **Broadway** show that night! ♥



August Moon Spa at La Tourelle | Ithaca

©Courtesy August Moon Spa



Kissing Bridge | Glenwood



Thunder Ridge Ski Area | Patterson

©Courtesy Greek Peak Resort | ©Roger William Theise



Greek Peak Mountain Resort | Cortland

X-COUNTRY SKIING

New York State's cross-country trails vary as much as our landscape, from seaside to mountaintop.

Glide through magical scenery at ski resorts, state parks and nature preserves, where trails delight everyone from beginner to back-country explorer. Many ski centers offer equipment rentals and lessons. Accommodations range from posh Adirondack resorts to winter cabins in **Allegany State Park**.

In the Hudson Valley, just north of New York City, find lakeside trails at **Fahnestock Winter Park** and the magnificent **Mohonk Mountain House**. Family friendly **Mountain Trails Cross Country Ski & Snowshoe Center** in the Catskills has three levels of well-groomed forest trails.

Follow unique paths in the Capital-Saratoga region on the **Battlefield at Saratoga National Historical Park** and on trails amid **Tree Haven Trails'** snow-laden evergreens.

Ski amid towering Adirondack pines at **Lake Placid's Olympic Sports Complex**, one of North America's premier venues, and **Dewey Mountain Recreation Center** in Saranac Lake.

Near Gore Mountain, **Garnet Hill Lodge** has lighted trails for night-skiing in addition to tasty dining and cozy accommodations. Trails at **Wellesley Island State Park** in the 1000 Islands-Seaway hug miles of scenic shoreline.

In the Snowbelt, east of Lake Ontario, lake-effect snow blankets the **Tug Hill Plateau** with over 200 inches yearly. Pristine trails traverse Central New York's **Osceola Tug Hill** and **Winona State Forest**, 50 miles north of Syracuse. The **Finger Lakes' Nordic Center** at **Bristol Mountain** has lighted trails, and Naples' **RMSC Cumming Nature Center** has 15 miles of ski trails and a 3-mile loop for snowshoeing. **Byrnclyff Resort**, in Greater Niagara, offers comfy lodging amid varied trails.

In the Enchanted Mountains of western New York, top-rated trails crisscross **HoliMont** and **Peek'n Peak Resort**. **Allegany State Park's** vast groomed trails are among the finest in the Northeast.

To get you started, many of New York's cross-country ski areas are listed featured on pages 32 – 33 and 36 – 37. See iloveny.com for information. ❤️



Shawangunk Ridge, Mohonk Mountain House | New Paltz



SNOWSHOEING

Enjoy New York's wonderful winter scenery on a tranquil yet exhilarating trek.

As the saying goes, if you can walk, you can snowshoe. It's fun, inexpensive and easy to learn. New York has splendid trails for every age and ability, from Manhattan's waterfront **Hudson Valley Greenway**, to old **Erie Canal towpaths**, to **Niagara Falls State Park**.

Many cross-country ski centers and ski resorts like **Greek Peak** in the Finger Lakes have snowshoeing areas (see pages 32-37) *Snowshoe Magazine* rated **Lapland Lake** in the Adirondacks #4 of the top 10 snowshoe-friendly Nordic centers in North America.

Watch for wildlife at scenic nature centers, from Long Island's **Quogue Wildlife Refuge** to Minna Anthony Common Nature Center on **Wellesley Island** in the 1000 Islands.

For a vigorous adventure with breathtaking lake views, trek the mountain trails of **Minnewaska State Park Preserve** in the Hudson Valley. Highly maneuverable, snowshoes can take you to places not accessible by ski or snowmobile. Hearty enthusiasts head out for overnight backpack trips and alpine climbs in the Catskills and Adirondacks. Near the High Peaks, **Adirondack Birding Tours** lead fascinating excursions.

The **Albany Pine Bush Preserve** provides a habitat for many plants and animals, as well as recreational opportunities like bird watching, hiking, nature study, cross-country skiing, snowshoeing and biking.

Licensed guides by the **NYS Outdoor Guides Association** can show you great places to explore and provide valuable pointers for each unique region New York has to offer.

Find information at iloveny.com ❤️



Windham Country Club | Windham



Albany Pine Bush Preserve | Albany



SNOWMOBILING

From the Catskills to the Adirondacks, across the Tug Hill region to Great Lake Erie, over 10,000 miles of groomed trails and breathtaking scenery await you.

Routes connect to rider-friendly towns, restaurants and inns. Winter festivals and races add to the fun. With **Snodeo Weekends** each December and over 500 miles of **Adirondack Park** trails, **Old Forge** is the Snowmobile Capital of the East.

The **Tug Hill Plateau**, one of the snowiest places in the East, boasts an average of 200 inches of annual snowfall. **Winona State Forest**, an hour north of Syracuse, has endless miles of forested trails. Trails wind around frozen lakes and waterfalls in the Finger Lakes, along the Grand Canyon of the East in Greater Niagara, and over waves of rolling hills in Chautauqua-Allegheny. In the **Catskill Forest Preserve** trails traverse hilly terrain, connecting friendly villages and unique attractions.

Discover snowmobile trails and cozy accommodations at more than 40

state parks. **Allegany State Park** has 90 miles of groomed trails and 150 winterized cabins. **Letchworth's** spectacular trails and campground connect to the **NYS Snowmobile Trail System**.

Offering operator training courses for snowmobilers of all ages above 10 years old, the **NYS Rider Training Program** provides information which all snowmobilers should possess in order to ensure the safety of riders and other trail users. Successful completion of this course results in the award of a NYS Snowmobile Safety Certificate.

The **NYS Snowmobile Association** supplies maps and helpful tips on rider-friendly inns, clubs and events. **NYS DMV's** website can help you get a NY registration and pay trail fees quickly. For a quick and easy start, try a tour with an outfitter like **Snow Tours Inc.** or **Old Forge Sport Tours**.

Experience New York's winter from a bold, fresh perspective. Dress up warm and hit the trails! ❤️



Old Forge Camping Resort | Old Forge

Courtesy: Old Forge Camping Resort



Tug Hill Plateau | Lowville



Courtesy Mirror Lake Inn Resort & Spa

LODGING & DINING

Mirror Lake Inn Resort & Spa | Lake Placid

One-of-a-kind places — from NYC grande dames to Adirondack dude ranches—warm welcomes and cool experiences await. Here's a sample of great getaways found only in New York State.

BIG APPLE ACCOMMODATIONS

Travelers in New York City choose among some of the world's finest hotels with increased availability in winter, and sometimes lower rates. Fantastic restaurants, shopping, theater and holiday events—you can do it all from mid-town's legendary grande dames like **The Plaza** and **St. Regis**, or New York's newest five-star hotel, the **Park Hyatt** across from the **Russian Tea Room**. Each has a unique ambiance, uncommon amenities and incomparable service. Grand staircases lead to Old World luxury at the 1834 **Inn at Irving Place**, nestled in Manhattan's historic Gramercy Park. Downstairs, the gracious Lady Mendl's salon

serves traditional afternoon tea and **Cibar** creates innovative cocktails.

SEASCAPE ESCAPES

The beach crowd is gone, but the timing is right for festivities at vineyards, shops, galleries and cafés on Long Island's North Fork and in the Hamptons. Sporting a retro 1950s design, the **Greenporter Hotel** is an easy walk to village restaurants and wine country events like December's tasty Shellabration.

Bridgehampton's **Topping Rose House** adds modern luxury to an historic mansion. Perks include Hunter *wellies* for wintry walks and a Lexus to scoot around town. **Jean-Georges** restaurant celebrates seasonal cuisine sourced from local farms and fishers. Cares bubble away in the seawater spa and world-famous ocean-fed pool at **Gurney's Montauk**, as floor-to-ceiling windows bestow soothing beach views.

HORSING AROUND

Guests at **WhistleWood Farm** in the Hudson Valley mingle with horses, feed chickens, cross-country ski and curl up by the fire with a good book. Polished antiques, gourmet breakfasts and home-made dessert buffets add panache to this country retreat. Down the road, the village of Rhinebeck beckons with galleries, fine dining and good cheer at **Foster's Coach House**.

With winter activities for the entire family, **Stony Creek Ranch Resort** keeps dudes active in the Adirondacks. Splash in the pool, enjoy nightly entertainment or just relax by the crackling fire.

MODERNIZED MOUNTAINS

Tucked amid the Catskill Mountains, **YO1**, a luxury wellness center promotes individualized wellness programs designed to detox, revitalize and educate guests on holistic health and well-being through the ancient Indian therapies of Ayurveda, naturopathy and yoga.

Urbane chic meets country comfort at **Scribner's Catskill Lodge**, a 1960s lodge refashioned into a sleek hideaway. Alpine cuisine, quirky library and decks overlooking the mountains make this a pleasing base-camp for skiing nearby **Hunter Mountain** or riding America's highest zipline.

SPA APPEAL

Famous for mineral baths and fine dining, the historic **Gideon Putnam Resort & Spa** offers snowshoeing and cross-country skiing right outside your door. The **Saratoga Casino Hotel**, a modern take on Saratoga's grand Victorian legacy, has a great steakhouse, shows and gaming.

PEAK RESORTS

Along with Olympic-level fun, the Adirondacks feature world-class resorts like Lake Placid's **Mirror Lake Inn**, rated a top 5 North American ski hotel by *Condé Nast*.

Lake Placid Lodge's lakeside cabins offer rustic luxury, cozy fireplaces and cloud-soft beds. Ski or snowshoe through the magical landscape, skate

on the frozen lake and savor s'mores at nightly bonfires.

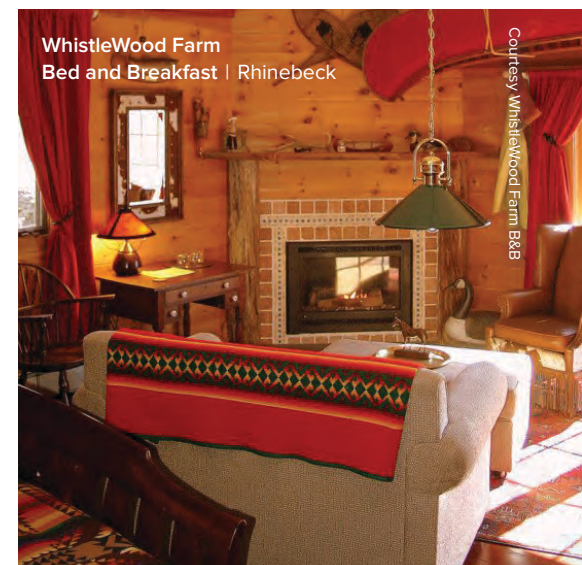
The Tudor-style slopeside **Inn at Peek'n Peak Resort & Spa** in Chautauqua-Allegheny welcomes with Old World charm. Think stone fireplaces, hand-carved woodwork and restaurants decorated with fine art and crystal chandeliers. Spa treatments soothe after a great day of skiing and other winter sports.

RUSTIC BEAUTY

Visit Finger Lakes wineries from the octagon-shaped **Black Sheep Inn**. Walk into Hammondsport, named Coolest Small Town in America by *Budget Travel* and explore transportation history at the **Glenn Curtiss Museum**.

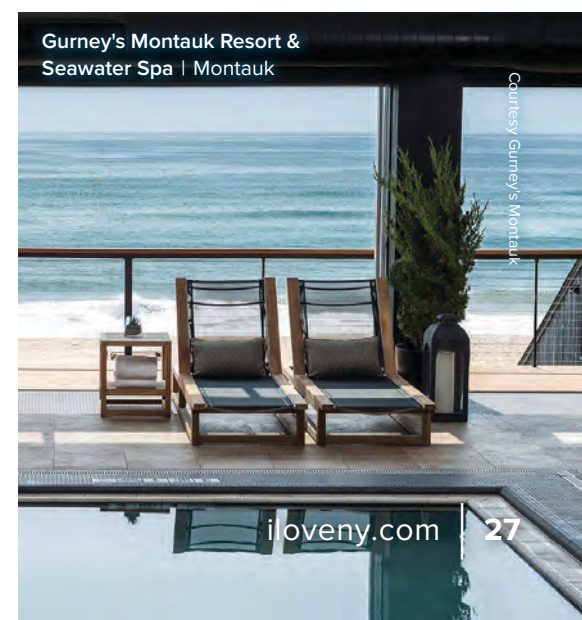
Amid the beauty of Greater Niagara's Letchworth State Park, guests stay and play affordably at the **Glen Iris Inn**. Enjoy cross-country skiing, ice-skating and horse-drawn sleighrides or zoom out on the snowmobile trail.

For more information about lodging and dining visit, iloveny.com ♥



WhistleWood Farm
Bed and Breakfast | Rhinebeck

Courtesy WhistleWood Farm B&B



Gurney's Montauk Resort &
Seawater Spa | Montauk

Courtesy Gurney's Montauk

Albany Bershire Ballet performs
The Nutcracker, The Palace Theater | Albany

Courtesy Albany Bershire Ballet

PERFORMING ARTS

Theater, music, dance, comedy! From Broadway to Buffalo, world-famous performers and rising stars dazzle and delight audiences from near and far.

New York City presents some of the world's most thrilling performances at icons like **Carnegie Hall**, **Lincoln Center** and **Brooklyn Academy of Music**. See the legendary Rockettes high-kicking at **Radio City Music Hall** and experience the thrill of a **Broadway** show.

Long Island's many theaters include the **Adelphi University Performing Arts Center** in Garden City and Sag Harbor's **Bay Street Theater**, earning rave reviews for classic and cutting-edge performances. Several plays that premiered at Bay Street have moved to Broadway.

Majestic upstate theaters include Poughkeepsie's **1869 Bardavon Opera House**, the opulent **Stanley Theater** in Utica, **Proctor's** in Schenectady, and Albany's **Palace Theatre**, staging comedy shows and

holiday favorites. **The Egg**, a unique modern structure in Albany's eclectic skyline, hosts musicians, plays and performances. In Troy, the **EMPAC** offers cutting-edge experimental media and performing arts in an equally unique modern venue.

World-class musicians are drawn by the ideal acoustics of the **1875 Troy Music Hall** and historic **Hubbard Hall** in Cambridge, with critically-acclaimed theater and opera.

HMT at the **Spa Little Theater** in Saratoga Springs offers high quality theater productions and classes in the theater arts to people of all ages.

The **Otesaga Resort Hotel** hosts the **Cooperstown Concert Series**, a long-standing seasonal event featuring eclectic music, from folk rock to swing.

Rochester's **Broadway Theatre League** is home to a full season of touring Broadway shows, live concerts, comedies and dramatic events throughout the year.

In Buffalo's theater district, **Shea's Performing Arts Center**, originally opened in 1926 and served as a movie house for Paramount Pictures staging vaudeville shows and played host to the Marx Brothers, Frank Sinatra, Bob Hope and many more. Today, Shea's provides a wide variety of off-Broadway plays, concerts, comedies and collaborative productions with local theatre groups.

Nearby, the **Irish Classical Theatre Company** is Western New York's only true theatre-in-the-round. In this intimate setting, you're never more than 10 feet from the stage.

The landmark **Kleinhans Music Hall** presents glorious classical concerts. The **Alleyway Theatre's** annual production of *A Christmas Carol*, Buffalo's longest-running holiday treat, will warm your heart.

For more information about catching lively shows across New York State, visit iloveny.com ♥

Grant wishes, find souvenirs, splurge, bargain shop or just browse. New York offers the best of everything!

SHOP 'TIL YOU DROP

Sidewalks dressed in holiday style lead to superstores like **Barneys** and **Saks** or pop-up holiday markets at **Bryant Park** and **Columbus Circle**.

See glorious displays and designer flagships from Armani to Versace along **Fifth Avenue**. Find fashionable bargains at re-sale shops and designer discounters like **Century 21**.

Got Kids? Shopping's a play date at **American Girl Place**, a dream-come-true with a full line of dolls, clothes and a café, with seating for dolls at your table. Kids of all ages love the **Lego Store**, facing the ice-skating rink at **Rockefeller Center**.

MORE FOR LESS OUTLETS

Find stylish clothes and gifts at fantastic discounts at Long Island's **Tanger Outlets**. In the Hudson Valley, **Woodbury Common** features the most sought after, high-end fashion and designer retail brands.

Woodbury Common Premium Outlets | Central Valley

SHOPPING

Ski at a world-class resort and snag bargains at the **Factory Outlets of Lake George**, in the Adirondacks, or the Finger Lakes' **Waterloo Premium Outlets**. **Destiny USA**, Syracuse's mega-center is brimming with outlets and unique entertainment. Minutes from the majestic falls, **Fashion Outlets of Niagara Falls** features 200 brand-name stores.

MERRY & BRIGHT

Find unique items in friendly towns and villages across New York. On Long Island, peruse an old-fashioned general store, Christmas shop and specialty boutiques at the **Milleridge Inn, Cottage & Shops** set in a quaint 1672 village.

Antique and art collectors flock to **Cold Spring, Hudson** and **Rhinebeck** in the Hudson Valley. Artists of historic **Sugar Loaf Art & Craft Village** present their wares in dozens of studios.

Explore galleries and country stores in Catskill towns like **Woodstock Margaretville** and **Mt Tremper**, home to the **Catskill Mountain**

Artisans Guild, Catskill Candies and Confections and **Emerson Country Store**, home to the World's Largest Kaleidoscope.

Along with bubbling mineral baths, **Saratoga Springs** offers eclectic shops and great restaurants. Find Adirondack regional crafts, from baskets to rustic furniture, in mountain villages like **Bolton Landing, Lake Placid** and **Saranac Lake**. In Central New York's Sharon Springs, visit the fabulous **Beekman Boys' 1802 Mercantile** for artisanal goods, from goat milk soaps to pasta sauce. Across the street, enjoy a fabulous farm-to-table dinner at the **American Hotel**.

Find local artisan specialties in **Corning's Gaffer District** and East Aurora's **Roycroft Campus** and charming Main Street, home of **Vidler's 5&10**, the world's largest variety store!

For more information about shopping in New York visit, iloveny.com ♥

WINTER EVENTS

Torchlight parades, magical ice castles, madcap outhouse races and dazzling fireworks fill our calendar with an abundance of fun and festivities.

DECEMBER

Old Forge in the Adirondacks revs up snowmobile season **Snodeo Weekend** with factory reps, music, fireworks and more.

Transcend time with nostalgic charm: Port Jefferson's **Dickens Festival** on Long Island; **Genesee Country Village & Museum** yuletide celebrations in the Finger Lakes; Hudson Valley's Gilded Age Christmas at **Staatsburgh State Historic Site**; horse-drawn sleigh rides through the historic **Chautauqua Institution** Victorian village; and enchanting **Victorian Strolls** in Saratoga Springs, Troy and Athens honor yesteryear holiday traditions.

Jolly events make winter bright, from **Rockefeller Center's Christmas Tree Lighting** in NYC, **Niagara Power Project** and **Festival of Trees** in Lewiston to the Finger Lakes dazzling Corning Gaffer District's annual **Sparkle, Crystal City Christmas**. Albany's **Capital Holiday Lights in the Park** a luminous drive-through wonderland ends at the Washington Park Lake House filled with fun, friends, crafts and refreshments. The 1000 Islands' **Christmas in Cape Vincent** and

downtown Clayton's **Christmas Parade in Lights** delights with floats adorned in holiday lights.

JANUARY

Chill out at Lake George's annual **New Year's Day Polar Plunge** or warm up at Buffalo Botanical Gardens' **Orchid Show**.

FEBRUARY

Long Island's **Jazz on the Vine Winterfest** features cool jazz and wine-tasting. Step back in time with country fun like horse-drawn sleigh rides at **Hanford Mills' Ice Harvest Festival** in the Catskills.

Winter carnivals from **Lake George** and **Old Forge's** at McCauley Mountain to **Ellicottville** and **Cooperstown**. There's even a majestic ice castle with shimmering lights and elaborate carvings that inspired *National Geographic Traveler* to rate **Saranac Lake Winter Carnival** one of the two best in the world!

MARCH

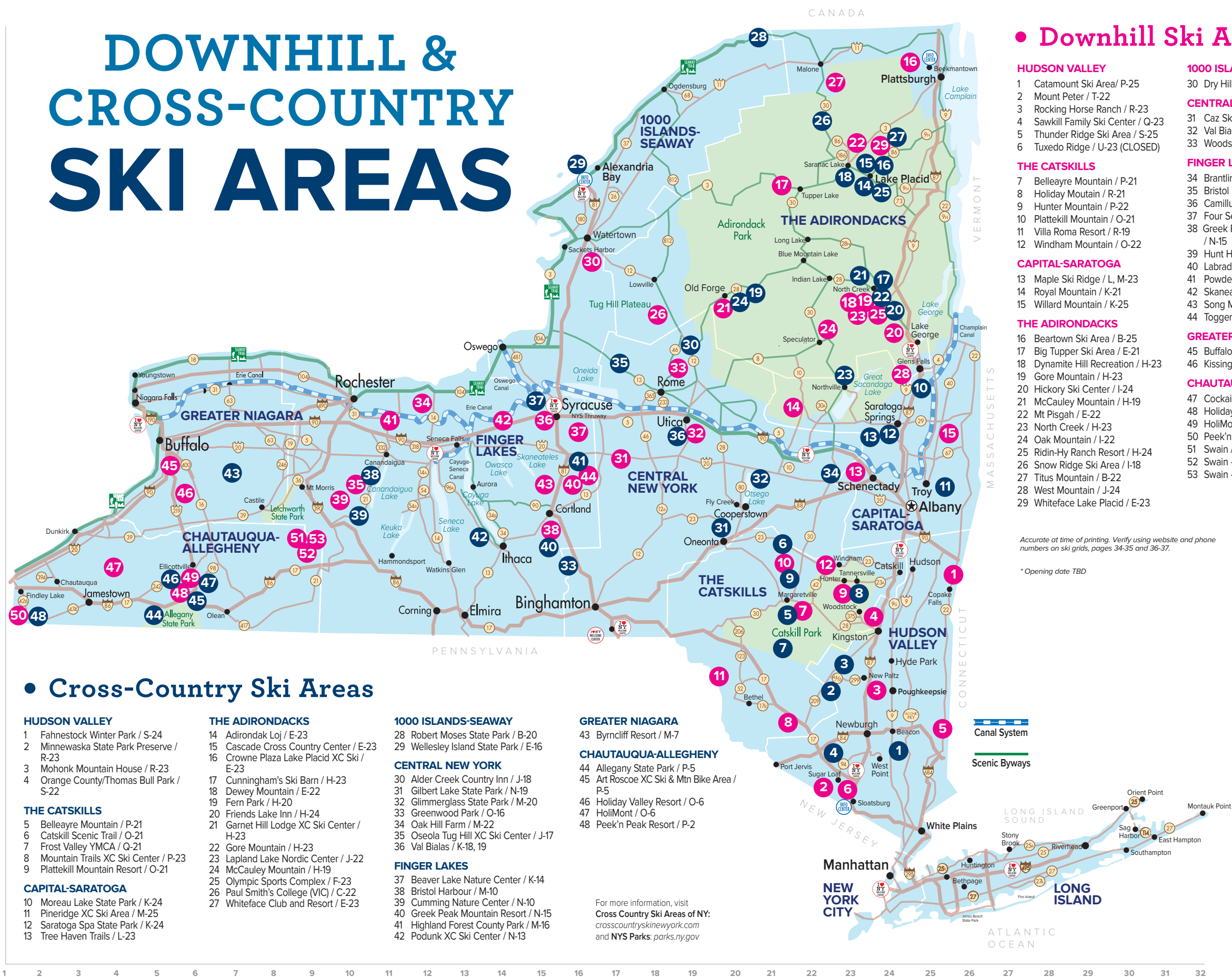
Rejoice winter's grand finale at Central New York's **Snommegang** that highlights local craft brews and dig into New York's finest tradition – **Maple Syrup Weekends** held across the state at months end.

Find more events, visit iloveny.com or download the **I LOVE NY** app. ❤️



The Rink at Rockefeller Center | Manhattan

DOWNHILL & CROSS-COUNTRY SKI AREAS



• Cross-Country Ski Areas

HUDSON VALLEY

- 1 Fahnestock Winter Park / S-24
- 2 Minnewaska State Park Preserve / R-23
- 3 Mohonk Mountain House / R-23
- 4 Orange County/Thomas Bull Park / S-22

THE CATSKILLS

- 5 Belleayre Mountain / P-21
- 6 Catskill Scenic Trail / O-21
- 7 Frost Valley YMCA / Q-21
- 8 Mountain Trails XC Ski Center / P-23
- 9 Plattkill Mountain Resort / O-21

CAPITAL-SARATOGA

- 10 Moreau Lake State Park / K-24
- 11 Pineridge XC Ski Area / M-25
- 12 Saratoga Spa State Park / K-24
- 13 Tree Haven Trails / L-23

THE ADIRONDACKS

- 14 Adirondack Loj / E-23
- 15 Cascade Cross Country Center / E-23
- 16 Crowne Plaza Lake Placid XC Ski / E-23
- 17 Cunningham's Ski Barn / H-23
- 18 Dewey Mountain / E-22
- 19 Fern Park / H-20
- 20 Friends Lake Inn / H-24
- 21 Garnet Hill Lodge XC Ski Center / H-23
- 22 Gore Mountain / H-23
- 23 Lapland Lake Nordic Center / J-22
- 24 McCauley Mountain / H-19
- 25 Olympic Sports Complex / F-23
- 26 Paul Smith's College (VIC) / C-22
- 27 Whiteface Club and Resort / E-23

1000 ISLANDS-SEAWAY

- 28 Robert Moses State Park / B-20
- 29 Wellesley Island State Park / E-16

CENTRAL NEW YORK

- 30 Alder Creek Country Inn / J-18
- 31 Gilbert Lake State Park / N-19
- 32 Glimmerglass State Park / M-20
- 33 Greenwood Park / O-16
- 34 Oak Hill Farm / M-22
- 35 Oseola Tug Hill XC Ski Center / J-17
- 36 Val Bialas / K-18, 19

FINGER LAKES

- 37 Beaver Lake Nature Center / K-14
- 38 Bristol Harbour / M-10
- 39 Cumming Nature Center / N-10
- 40 Greek Peak Mountain Resort / N-15
- 41 Highland Forest County Park / M-16
- 42 Podunk XC Ski Center / N-13

GREATER NIAGARA

- 43 Byrnclyff Resort / M-7

CHAUTAUQUA-ALLEGHENY

- 44 Allegany State Park / P-5
- 45 Art Roscoe XC Ski & Mtn Bike Area / P-5
- 46 Holiday Valley Resort / O-6
- 47 HoliMont / O-6
- 48 Peek'n Peak Resort / P-2

For more information, visit
Cross Country Ski Areas of NY:
crosscountryskinyork.com
and NYS Parks: parks.ny.gov

• Downhill Ski Areas

HUDSON VALLEY

- 1 Catamount Ski Area / P-25
- 2 Mount Peter / T-22
- 3 Rocking Horse Ranch / R-23
- 4 Sawkill Family Ski Center / Q-23
- 5 Thunder Ridge Ski Area / S-25
- 6 Tuxedo Ridge / U-23 (CLOSED)

THE CATSKILLS

- 7 Belleayre Mountain / P-21
- 8 Holiday Mountain / R-21
- 9 Hunter Mountain / P-22
- 10 Plattkill Mountain / O-21
- 11 Villa Roma Resort / R-19
- 12 Windham Mountain / O-22

CAPITAL-SARATOGA

- 13 Maple Ski Ridge / L, M-23
- 14 Royal Mountain / K-21
- 15 Willard Mountain / K-25

THE ADIRONDACKS

- 16 Beartown Ski Area / B-25
- 17 Big Tupper Ski Area / E-21
- 18 Dynamite Hill Recreation / H-23
- 19 Gore Mountain / H-23
- 20 Hickory Ski Center / I-24
- 21 McCauley Mountain / H-19
- 22 Mt Pisgah / E-22
- 23 North Creek / H-23
- 24 Oak Mountain / I-22
- 25 Ridin-Hy Ranch Resort / H-24
- 26 Snow Ridge Ski Area / I-18
- 27 Titus Mountain / B-22
- 28 West Mountain / J-24
- 29 Whiteface Lake Placid / E-23

1000 ISLANDS-SEAWAY

- 30 Dry Hill Ski Area / G-16

CENTRAL NEW YORK

- 31 Caz Ski Club / L-17
- 32 Val Bialas / K-18, 19
- 33 Woods Valley Ski Area / J-18

FINGER LAKES

- 34 Brantling Ski Slopes / J-12
- 35 Bristol Mountain Resort / M-10
- 36 Camillus Ski Association / K-15
- 37 Four Seasons Golf & Ski / L-16
- 38 Greek Peak Mountain Resort / N-15
- 39 Hunt Hollow Ski Club / N-10
- 40 Labrador Mountain / M-15
- 41 Powder Mills Park / K-11
- 42 Skaneateles Ski Club / L-14
- 43 Song Mountain Resort / M-15
- 44 Toggenburg Mountain / M-16

GREATER NIAGARA

- 45 Buffalo Ski Club / M-5
- 46 Kissing Bridge / N-6

CHAUTAUQUA-ALLEGHENY

- 47 Cockaigne Resort* / O-4
- 48 Holiday Valley / O-6
- 49 HoliMont Ski Area / O-6
- 50 Peek'n Peak Resort / P-2
- 51 Swain / N-9
- 52 Swain - Northampton / N-9
- 53 Swain - Powder Hills / N-9

Travel Information

WELCOME CENTERS

ADIRONDACKS

I-87 North, Adirondack Northway, Queensbury

CAPITAL-SARATOGA

I-87 North (between Exits 21B-21A), New Baltimore

CENTRAL NEW YORK

I-90 Exit 36 to I-81 South, Exit 23B, Destiny USA, Syracuse

FINGER LAKES

I-90 Exit 42, 35 Lakefront Drive, Geneva

GRAND ISLAND / WESTERN NY

I-190 South, Exit 19, Grand Island

HUDSON VALLEY / CATSKILLS

I-87 Exit 16/Harriman to Rte 32 North, Woodbury Common Premium Outlets, Central Valley

NEW YORK CITY / JAVITS CENTER

Javits Center, 655 W. 34th St, New York

LONG ISLAND

Long Island Expy East (between Exits 51-52), Dix Hills

MOHAWK VALLEY

I-90 West, milepost 187, Fultonville

NORTH COUNTRY

I-81 South, Exit 50S, Collins Landing / Alexandria Bay

SOUTHERN TIER

I-81 North, Kirkwood

GATEWAY INFORMATION CENTERS

ADIRONDACK / BEEKMANTOWN

I-87 southbound between exits 41 and 40, West Chazy. 800/487-6867, 518/846-8016

1000 ISLANDS INTERNATIONAL COUNCIL

I-81 South, Exit 50S. 800/8ISLAND, 315/482-2520

ROAD CONDITIONS AND RULES

- For travel and traffic information, go to 511ny.org or call 511.
- For roadside assistance call 911 or look for instructions posted on some highways.
- Seat belts are required in NYS for all front seat passengers and rear seat passengers under 16 years of age.
- An appropriate child safety restraint system is required for all children until their 8th birthday. It must meet the size and weight requirements for the child based on the Federal requirements and the recommendations of the manufacturer. This can be a child safety seat, a harness, a vest or a booster seat attached with the vehicle seat belt or latch system. It should not be used in the front seat of the vehicle. Children under 4 years old must ride in safety seats. If the child is eight years old or more and is under 4'9" tall or weighs less than 100 lbs, it is recommended that you continue to use a child restraint system.
- Only passenger vehicles are permitted on NYS parkways. Trucks, utility vans and commercial vehicles are prohibited.
- Use of handheld cellphones is prohibited while operating a motor vehicle in NYS.
- New York State Thruway E-Z Pass information: e-zpassny.com or call 800/333-8655.
- Pedestrians have the right of way in crosswalks. When traffic controls are not in place, or inoperative, drivers of motor vehicles must yield to pedestrians entering or crossing within a crosswalk.
- Move Over Law: On parkways and highways with multiple lanes, when approaching law enforcement officers, emergency workers, tow and service vehicles and maintenance workers stopped with emergency lighting, drivers must move from the lane immediately adjacent to the emergency or hazard vehicle, unless prevented by traffic or other hazards.


DOWNHILL SKI AREAS

	TRAILS: Beginner Intermediate Expert	LONGEST RUN: feet ❄️	SNOWMAKING	RETAIL SHOP \$ EQUIPMENT RENTALS \$ Chairlifts Highspeed Gondolas Lifts Tows Conveyors	DAYS OF OPERATION SENIOR DISCOUNT \$ \$	LODGING 🏠 SKI/IN/SKI-OUT ↕️ RV ⚡ FOOD 🍽️ LOUNGE ☺️
 Hudson Valley HV						
Catamount Ski Area Hillsdale 12529 518/325-3200 catamountski.com	1.75 ❄️	2	13 Beg 16 Int 7 Exp	2 T 2 Cn 4 Ch	\$20-69 \$ R	Daily; Nights ☺️🛋️🚰
Mount Peter Ski Area Warwick 10990 845/986-4940 mtpeter.com	450 ❄️	.5	5 Beg 5 Int 3 Exp ●	1 Cn 3 Ch	\$22-54 S R	Daily; Nights ☺️🛋️🚰
Rocking Horse Ranch Highland 12528 800/647-2624; 845/691-2927 rockinghorseranch.com	150 ❄️	.2	●	1 T 1 Cn	Guests \$	Daily ☺️🛋️🚰
Sawkill Family Ski Center Kingston 12401 845/336-6977 sawkillski.com	70 ❄️	.18	1 Beg 1 Int ●	1 T 1 Cn	\$25-55 R	Sat-Sun; Holidays; Nights ☺️🛋️🚰
Thunder Ridge Ski Area Patterson 12563 845/878-4100 thunderridgeski.com	600 ❄️	1	10 Beg 5 Int 7 Exp	1 T 4 Cn 3 Ch	\$20-57 S R	Daily; Nights ☺️🛋️🚰
The Catskills CT						
Belleayre Mountain Highmount 12441 800/942-6904; 845/254-5600 belleayre.com	1,404 ❄️	2.28	13 Beg 34 Int 13 Exp	2 Cn 4 Ch 1 H 1 G	\$20-68 S R	Daily; C ☺️🚰
Holiday Mountain Monticello 12701 845/796-3161 holidaymtn.com	400 ❄️	.8	2 Beg 3 Int 2 Exp ●	2 T 2 Ch	\$27-42 \$ R	Tue-Sun; Nights ☺️🚰
Hunter Mountain Hunter 12442 800/HUNTERMtn; 518/263-4223 huntermtn.com	1,600 ❄️	2	16 Beg 16 Int 26 Exp ●	1 T 3 Cn 7 Ch 1 H	\$45-78 S R	Daily ☺️🛋️🚰🚲
Plattekill Mountain Roxbury 12474 607/326-3500 plattekill.com	1,100 ❄️	2	7 Beg 17 Int 14 Exp ●	1 T 1 Cn 2 Ch	\$20-67 S R	Fri-Sun; Holidays ☺️🛋️🚰
Villa Roma Resort Callicoon 800/533-6767; 914/887-4880 villaroma.com	500	.5	1 Beg 1 Int ●	1 Ch	\$18-28 \$ C	Mon, Fri, Sat ☺️🚰
Windham Mountain Windham 12496 800/754-9463; 518/734-4300 windhammountain.com	1,600 ❄️	2.5	11 Beg 22 Int 21 Exp ●	1 T 4 Cn 4 Ch 3 H	\$15-95 S R	Daily; Nights C ☺️🛋️🚰

* Fees are based on previous year's rates and are subject to change.


34 | iloveny.com

DOWNHILL SKI AREAS

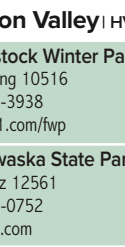
<div>  <div> <div>AD</div> <div>ADIRONDACKS</div> </div> <div> <div>CNY</div> <div>CENTRAL NEW YORK</div> </div> <div> <div>FL</div> <div>FINGER LAKES</div> </div> </div>									
<div> <div>TRAILS: Beginner Intermediate Expert</div> <div>SNOWMAKING</div> <div>LONGEST RUN: miles</div> <div>VERTICAL DROP: feet</div> <div>RETAIL SHOP: \$</div> <div>EQUIPMENT RENTALS: \$</div> <div>FEES: \$</div> <div>SENIOR DISCOUNT: %</div> <div>LIFTS: Tows Conveyors</div> <div>Highspeed Gondolas</div> <div>DAYS OF OPERATION</div> <div>CHILD CARE: \$</div> <div>LODGING: \$</div> <div>FOOD: \$</div> <div>LOUNGE: \$</div> <div>SKI IN/SKI OUT</div> <div>RV: \$</div> </div>									
The Adirondacks AD									
West Mountain Queensbury 12804 518/636-3699 westmtn.net	1,010 ❄️	1.5	2 Beg 26 Int 3 Exp	3 T 3 Ch	\$17-77 \$ \$ R	Daily; Nights Mon-Sat	🍴 🍷		
Whiteface Lake Placid Wilmington 12997 518/946-2223 whitefacelakeplacid.com	3,430 ❄️	2.1	18 Beg 37 Int 33 Exp	1 Cn 8 Ch 1 H 2 G	\$0-96 \$ \$ R	Daily C	🍴 🍷	🚰	
1000 Islands-Seaway TI									
Dry Hill Ski Area Watertown 13601 800/379-8584; 315/782-8584 skidryhill.com	300 ❄️	.4	3 Beg 3 Int 1 Exp	2 T 1 Ch	\$15-44 \$ \$ R	Wed-Sun; Nights	🍴 🍷		
Central New York CNY									
Val Bialas Utica 13502 315/738-0172 cityofutica.com	400 ❄️	.38	3 Beg 4 Int 1 Exp	2 T 1 Ch	\$13-23 \$ \$ R	Daily; Nights	🍴 🍷		
Woods Valley Ski Area Westernville 13486 315/827-4721 woodsvalleyskiarea.com	500 ❄️	.75	6 Beg 5 Int 10 Exp	1 T 2 Cn 2 Ch	\$12-43 \$ \$ R	Wed-Sun; Nights; Holidays	🍴 🍷	🚰	
Finger Lakes FL									
Brantling Ski Slopes Sodus 14551 315/331-2365 brantling.com	240 ❄️	.3	6 Beg 4 Int	6 T	\$19-32 \$ \$ R	Daily; Nights	🍴 🍷	🚰	
Bristol Mountain Resort Canandaigua 14424 585/374-6000 bristolmountain.com	1,200 ❄️	2	11 Beg 18 Int 6 Exp	1 Cn 3 Ch 2 H	\$39-70 \$ \$ R	Daily; Nights C	🍴 🍷	🚰 🚗	
Four Seasons Golf & Ski Fayetteville 13066 315/637-9023 fourseasonsgolfandski.com	100 ❄️	.25	2 Beg 1 Int 1 Exp	1 Cn 1 Ch	\$14-24 R \$	Thu-Sun; Holidays	🍴 🍷	🚰	
Greek Peak Mountain Resort Cortland 13045 800/955-2SKI greekpeakmtnresort.com	952 ❄️	1.5	20 Beg 30 Int 5 Exp	3 Cn 5 Ch 1 H	\$32-79 \$ \$ R	Daily; Nights C	🍴 🍷	🚰	
Hunt Hollow Ski Club Naples 14512 585/374-5428 hunthollow.com	825 ❄️	1	6 Beg 4 Int 9 Exp	1 T 2 Ch	\$13-58 \$ \$ R	Wed-Sun	🍴 🍷		

Finger Lakes region continues on next column.

*Fees are based on previous year's rates and are subject to change.

<div>  <div> <div>TRAILS: Beginner Intermediate Expert</div> <div>LONGEST RUN miles</div> <div>SNOWMAKING ❄️</div> <div>VERTICAL DROP feet</div> </div> <div> <div>RETAIL SHOP \$ EQUIPMENT RENTALS \$</div> <div>FEES: SENIOR DISCOUNT \$</div> <div>Chair's Highspeed Gondolas</div> <div>Lift's: Tows Conveyors</div> </div> <div> <div>DAYS OF OPERATION CHILDCARE \$</div> <div>LODGING \$ / SKI/SKI OUT 🚡 / RV 🚐</div> <div>FOOD 🍽️ / LOUNGE 🍷</div> </div> </div>									
Finger Lakes FL									
Labrador Mountain Truxton 13158 800/446-9559; 607/842-6204 skicny.com	700 ❄️	1	5 Beg 8 Int 9 Exp	3 T 3 Ch	\$29-59 \$ \$ \$ R	Daily; Nights C	👤 🍷	🚡 🚐	
Powder Mills Park Pittsford 14534 585/586-1470; 607/545-6511 swain.com/monroe-county-parks	80 ❄️	.15	1 Beg	1 T	\$12-99 \$ R	Tues-Sun			
Song Mountain Resort Tully 13159 315/696-5711 skicny.com	700 ❄️	1	8 Beg 10 Int 5 Exp	1 T 4 Ch	\$10-59 \$ \$ \$ R	Daily; Nights C	👤 🍷	🚡	
Toggenburg Mountain Fabius 13063 800/720-8644; 315/683-5842 skitog.com	700 ❄️	1	7 Beg 6 Int 7 Exp 2 Ter	3 T 2 Ch	\$20-55 \$ \$ \$ R	Daily; Nights C	👤 🍷	🚡	
Greater Niagara GN									
Buffalo Ski Club Orchard Park 14127 716/941-5654 buffaloskiclub.com	550 ❄️		14 Beg 16 Int 13 Exp	5 T 2 Ch	\$20-55 \$ R	Wed-Sun; Holidays Nights: C	👤 🍷	🚡 🚐	
Kissing Bridge Glenwood 14069 877/867-5452; 716/592-4963 kbski.com	550 ❄️	.65	9 Beg 14 Int 14 Exp	2 T 6 Ch	\$10-65 \$ \$ \$ R	Daily; Nights C	👤 🍷	🚡	
Chautauqua-Allegheny CA									
Cockaigne Ski Resort Cherry Creek 14723 716/287-3223 cockaigne.com	430 ❄️	.68	4 Beg 5 Int 1 Exp	1 T 1 Cn 3 Ch	\$15-42 \$ \$ \$ R	Daily; Nights C	👤 🍷		
Holiday Valley Ellicottville 14731 800/323-0020; 716/699-2345 holidayvalley.com	750 ❄️	1	22 Beg 16 Int 22 Exp	2 Cn 8 Ch 3 H	\$35-78 \$ \$ \$ R	Daily; Nights C	👤 🍷	🚡 🚐	
HoliMont Ski Area Ellicottville 14731 877/754-4654; 716/699-2320 holimont.com	700 ❄️	.8	14 Beg 14 Int 24 Exp	1 Cn 6 Ch 1 H	\$21-79 \$ \$ \$ R	Mon-Fri; Guests: Daily	👤 🍷		
Peek'n Peak Resort Clymer 14724 716/355-4141 pknpk.com	400 ❄️	.7	4 Beg 16 Int 10 Exp	3 Cn 8 Ch	\$29-63 \$ \$ \$ R	Daily; Nights C	👤 🍷	🚡 🚐	
Swain Resort Swain 14884 607/545-6511 swain.com	650 ❄️	1	11 Beg 13 Int 11 Exp	1 Cn 4 Ch	\$29-59 \$ \$ \$ R	Daily; Nights C	👤 🍷	🚡	

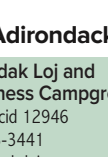
CROSS COUNTRY SKI AREAS

		INSTRUCTION MARKED MAPS TRAILS (km)	GUIDED TOURS RENTALS TRAILS (km)	WARMING HUT HUT	RESTAURANT DAYS OF OPERATION	LODGING SNACKS	RV
Hudson Valley HV							
Fahnestock Winter Park Cold Spring 10516 845/225-3938 roberts-1.com/fwp	20 Tr 15 S 18 M			\$15	Daily		
Minnewaska State Park Preserve New Paltz 12561 845/255-0752 nysparks.com	56 Tr 20 S 42 M			\$10 per car	Daily		
Mohonk Mountain House New Paltz 12561 845/256-2101 mohonk.com	55 Tr 30 S	 		\$20-25	Daily		
Orange County/Thomas Bull Park Montgomery 12549 845/615-3830 orangecountynyparks.com				Free	Daily		
The Catskills CT							
Belleayre Mountain Highmount 12441 800/942-6904; 845/254-5600 belleayre.com	9 Tr 9 M			Free	Daily		
Catskill Scenic Trail Stamford 12167 607/652-2821 catskillscenictrail.org	41 Tr			Free	Daily		
Frost Valley YMCA Claryville 12725 845/985-2291 frostvalley.org	25 Tr	 		\$25-40	Weekends		
Mountain Trails XC Ski Center Tannersville 12485 518/589-5361 mtntrails.com	35 Tr 35 S 35 M	 		\$10-20	Weekends & Holidays		
Plattekill Mountain Resort Roxbury 12474 800/NEED2SKI; 607/326-3500 plattekill.com	21 Tr 21 M	 		\$10	Fri-Sun Holidays		
Capital-Saratoga CS							
Moreau Lake State Park Gansevoort 12831 518/793-0511 nysparks.com; friendsofmoreaulake.org	32 Tr	 		Free	Daily		
Pineridge XC Ski Area East Poestenkill 12140 518/283-3652 pineridgexc.com	35 Tr 35 S 15 M	 		\$0-20	Daily		
Saratoga Spa State Park Saratoga Springs 12866 518/584-2535 nysparks.com	13 Tr			Free	Daily		

* Fees are based on previous year's rates and are subject to change.

36 | iloveny.com

CROSS COUNTRY SKI AREAS

<div>  <div> <div>INSTRUCTION</div> <div>GUIDED TOURS</div> <div>MARKED MAPPED TRAILS (km)</div> <div>TRAILS (km) SET TRACK (km)</div> </div> <div> <div>WARMING HUT</div> <div>RENTALS</div> </div> <div> <div>RESTAURANT</div> <div>DAYS OF OPERATION</div> </div> <div> <div>LOGGING</div> <div>SNACKS</div> </div> </div>						
The Adirondacks AD						
Adirondak Loj and Wilderness Campground Lake Placid 12946 518/523-3441 adk.org/ad_loj	20 Tr 20 M	ⓘ R		\$10	Daily	☕🚰
Cascade Cross Country Center Lake Placid 12946 518/523-9605 cascadeski.com	20 Tr 20 S 20 M	ⓘ R 🚰	🏠	\$15-18	Daily; Nights	☕🚰
Crowne Plaza Lake Placid XC Ski Lake Placid 12946 877/570-5891; 518/523-2556 lakeplacidcp.com	20 Tr 20 S 20 M	ⓘ R	🏠	\$5; Guests Free	Sat, Sun, Holidays	☕🚰
Cunningham's Ski Barn North Creek 12853 800/888-RAFT; 518/251-3215 cunningshamskibarn.com	5 Tr 5 S 5 M	ⓘ R 🚰	🏠	\$15	Daily	☕
Dewey Mountain Saranac Lake 12983 800/491-0414; 518/891-2697 deweyskicenter.com	20 Tr 10 S 7 M	ⓘ R 🚰	🏠	\$5	Daily; Nights Tue-Fri	
Fern Park Inlet 13360 866/GO-INLET; 315/357-5501 inletny.com	20 S 20 M	ⓘ R 🚰	🏠	Free	Daily; Nights	
Friends Lake Inn Chestertown 12817 518/494-4751 friendslake.com	32 Tr 32 S 32 M	ⓘ R	🏠	\$15	Weekends	☕🚰
Garnet Hill Lodge XC Ski Center North River 12856 800/497-4207; 518/251-2444 garnet-hill.com	55 Tr 55 S 34 M	ⓘ R 🚰	🏠	\$18-22	Daily	☕🚰
Gore Mountain North Creek 12853 800/342-1234; 518/251-2411 goremountain.com	13 Tr 13 M	ⓘ R	🏠	\$8-13	Daily	☕🚰
Lapland Lake Nordic Center Northville 12134 800/453-SNOW; 518/863-4974 laplandlake.com	38 Tr 38 S 50 M	ⓘ R	🏠	\$20+	Daily	☕🚰
McCauley Mountain Old Forge 13420 315/369-3225 mccauleyny.com	20 Tr 20 S 20 M	ⓘ R 🚰	🏠	\$5-20	Wed-Mon	☕
Olympic Sports Complex Lake Placid 12946 518/523-2811; orda.org	50 Tr 50 S 50 M	ⓘ R	🏠	\$14-20	Daily	☕🚰
Paul Smith's College Visitor Interpretive Center Paul Smiths 12970 518/327-3000 adirondackvic.org	40 Tr 40 S 40 M	ⓘ R		\$5-10	Daily	
Whiteface Club and Resort/ Nordic Ski and Snowshoe Center Lake Placid 12946 518/523-2551; 800/422-6757 whitefaceclubresort.com	18 Tr 18 S 18 M	ⓘ R		\$8-12	Wed-Sun	☕🚰

Finger Lakes region continues on next column.

		MARKED MAPPED TRAILS (km) SET TRACK (km)		INSTRUCTION GUIDED TOURS RENTALS		WARMING HUT TRAIL FEES*		RESTAURANT DAYS OF OPERATION		LOGGING SNACKS		RV	
1000 Islands-Seaway TI													
Robert Moses State Park Massena 13662 315/769-8663; 315/705-5593 nysparks.com; massenanaturecenter.com		25 Tr 12 S		R				Free	Daily				
Wellesley Island State Park Minna Anthony Common Nature Center Wellesley Island 13640 315/482-2479 nysparks.com		10 Tr 10 S		R	🏠			Free	Daily	☕	🍷		
Winona State Forest Recreation Association Mannsville 13661 315/376-3521 nysparks.com; winonaforest.com		30 Tr 36 M			🏠			Free	Daily				
Central New York CNY													
Alder Creek Country Inn Alder Creek 13301 315/831-5222 aldercreekgolfcourse.com		24 Tr 12 S 12 M				🏠		Free	Fri-Sun	🕒	🍷		
Gilbert Lake State Park Laurens 13796 800/456-CAMP; 607/432-2114 nysparks.com		19 Tr 19 S						Free	Fri-Sun				
Glimmerglass State Park Cooperstown 13326 800/345-CAMP; 607/547-8662 nysparks.com		5 Tr 5 M				🏠		Free	Fri-Sun	☕			
Greenwood Park Lisle 13797 800/456-CAMP; 607/862-9933 gobroomecounty.com		20 Tr 10 S 10 M		R		🏠		\$5+	Daily	☕			
Oak Hill Farm Esperance 12066 518/875-6700 oakhillxc.com		28 Tr 28 S 28 M		i R		🏠		\$15	Daily Sat-Sun Holidays	☕			
Oseola Tug Hill XC Ski Center Camden 133616 315/599-7377 uxski.com		40 Tr 40 S 40 M		R		🏠		\$10-20	Daily	☕			
Val Bialas Recreation Ski Center Utica 13502 315/266-0454 cityofutica.com		8 Tr 8 M		R		🏠		Free	Daily; Nights	☕			
Finger Lakes FL													
Beaver Lake Nature Center Baldwinsville 13027 315/638-2519; 315/638-2519 onondagacountyparks.com; beaverlakenaturecenter.org		15 Tr 15 M				🏠		\$5 per car	Daily	☕			

* Fees are based on previous year's rates and are subject to change.

Finger Lakes | FL

Bristol Harbour

Canandaigua 14424
800/288-8248; 585/396-2200
[bristolharbour.com](#)

8 Tr
8 S
8 M

R
I

Hut
No Hike

\$0

Daily

Coffee
Fork & Knife

Bristol Mountain Resort

Canandaigua 14424
585/374-6000
[bristolumountain.com](#)

15 Tr
15 M

Hut

\$12

Daily

Glass
Bike

Cumming Nature Center

Naples 14512
585/374-6160
[rmssc.org/cumming-nature-center](#)

15 Tr
25 S
25 M

R

Hut

\$3-10

Wed-Sun

Coffee

Greek Peak Mountain Resort

Cortland 14850
800/955-2754; 607/835-6111
[greekpeak.net](#)

32 Tr
17 S

I
R

Hut
Hike

\$5-52.50

Daily

Coffee
Fork & Knife

Highland Forest County Park

Fabius 13063
315/683-5550
[onodagacountyparks.com/highland](#)

33 Tr
33 S
5 M

I
R

Hut

\$2-5

Daily

Fork & Knife

Podunk XC Ski Center

Interlaken 14847
607/387-6716; 607/387-3093

5 Tr
5 S

I
R

Free

Daily

Greater Niagara | GN

Byrncliff Resort

Varysburg 14167
585/535-7300
[byrncliff.com](#)

20 Tr
8 S
20 M

I
R
Hike

Hut

\$0-18

Daily;
Nights

Coffee
Fork & Knife

Chautauqua-Allegheny | CA

Alliegany State Park

Salamanca 14779
716/354-9121; 800/456-2267
[nysparks.com](#)

50 Tr
30 S
30 M

R

Hut

Free

Daily

Coffee
Fork & Knife

Art Roscoe XC Ski and Mountain Bike Area

Salamanca 14779
716/354-9121

38 Tr
9 M

R

Hut

\$6-20

Daily

Coffee
Bike

Holiday Valley Resort

Ellicottville 14731
800/323-0020; 716/699-2345
[holidayvalley.com](#)

15 Tr
15 M

I
R

Hut

\$0-15

Daily

Coffee
Bike

HoliMont

Ellicottville 14731
877/754-4654; 716/699-2320
[holimont.com](#)

6 Tr
6 M

I
R
Hike

Free For Guests

Daily

Coffee

Peek'n Peak Resort

Clymer 14736
800/772-6906; 716/355-4141

10 Tr
10 S
10 M

I
R

Hut

\$8

Daily

Coffee
Bike

iloveny.com | 37





CELEBRATE WINTER

ISKINY FREE FOR KIDS PASSPORT PROGRAM

3rd and 4th Graders can learn to ski or board and get one **FREE*** lift ticket when an adult ticket is purchased,** up to 3 per participating ski area.

* \$27 processing fee applies, \$54 for both.
**Some purchase restrictions may apply.

New York is home to some of the best skiing in the East. With over 50 ski areas, there's bound to be one nearby. Visit www.iskiny.com for details on:

- Snow Reports**
Up-to-Date ski conditions from around the state
- Ski & Stay Deals**
Gold Pass, Tickets and Learn To Ski & Ride Program
- Mountain Info & More!**

A program of ISKINY | PO Box 375 | Jamesville NY 13078

LEARN TO SKI & SNOWBOARD!

Check out www.iskiny.com for Learn To Ski and Snowboard Specials at participating New York State mountains.

www.facebook.com/skiandrideny
Twitter: @iskiny

if it's (ski) free...
it's me!



Learn to ski or ride at more than 25 New York ski areas for **FREE***

Valid for any 3rd or 4th grader in the world! Get out and enjoy winter this year!

Visit iskiny.com

Visit iSkiNY.com today for details, rules, participating ski areas, Free for Kids lift ticket offers, and more.
* \$27 processing fee applies or \$54 processing fee applies for both the Ski for Free and Learn To Ski/Snowboard Passport.



2 WAYS TO SKI 3

SEASON PASSES

7,300'+ VERT
230+ TRAILS
800+ ACRES
3 MOUNTAINS



VERTICAL CLUB

1ST DAY FREE
6TH DAY FREE
DISCOUNTS EVERY DAY



NYSKI3.COM





PLAN YOUR NEW YORK STATE

VACATION

TODAY

VISIT ILOVENY.COM

Download the
I LOVE NY app

I  NY[®]