



# EXPLORE

NORTH PLATTE



Find your way to a good time, exploring all  
of the fun things to do in North Platte.



DISCOVER MORE AT  
[VisitNorthPlatte.com](http://VisitNorthPlatte.com)  
800-955-4528



## You don't need to be a legendary cowboy to enjoy North Platte.

### **An adventurous spirit sure helps though.**

Out here you'll find history, recreation, and the pioneer spirit in abundance. No matter if you're looking for outdoor adventure, the world's largest railyard, the spectacle of NEBRASKAland DAYS, the home of Buffalo Bill and more. That's why North Platte, Nebraska gets Buffalo Bill's Buffalo of Approval.



**HERITAGE  
3**



**ADVENTURE  
9**



**SANDHILL  
CRANES  
16**



**CHRISTMAS  
DESTINATION  
18**



**MEMORIAL  
23**



**RAILROAD  
7**



**MAP  
15**



**CELEBRATE  
FALL  
17**



**VINTAGE,  
ART & HOPS  
20**



**EAT & SLEEP  
DIRECTORY  
24**



## Buffalo Bill State Historical Park

No one figure personifies the frontier spirit better than William F. “Buffalo Bill” Cody, the West’s most colorful showman, army scout and buffalo hunter.

The legacy of the life and times of Buffalo Bill lives on at Buffalo Bill Ranch State Historical Park. Cody’s elegant Second Empire house, built in 1886, and huge barn sit on 25 acres of what was originally a 4,000-acre spread that Cody called Scout’s Rest Ranch.

As an added attraction, horseback riding is now offered on trails throughout the State Recreation Area.

**ADDRESS:** 2921 Scouts Rest Ranch Rd.

**PHONE:** 308-535-8035

**WEB:** [VisitNorthPlatte.com/things-to-do/attractions/buffalo-bill-ranch/](http://VisitNorthPlatte.com/things-to-do/attractions/buffalo-bill-ranch/)

**SEASON/HOURS OF OPERATION:**

Typically open April through October.

Check their website for dates and times.

Park grounds open year-round, 8am–Sunset

**DUSTY TRAILS TRAIL RIDES:**

**Memorial Day–Labor Day:** Fri–Sat, 12–6pm

**ADMISSION:** Admission charged and park permit required.

## Lincoln County Historical Museum

The Museum features the official North Platte World War II Canteen exhibit, which tells the story of local volunteers who served more than six million service men and women throughout World War II.

Behind the main museum building is a complete western prairie village.

**ADDRESS:** 2403 N. Buffalo Bill Ave.

**PHONE:** 308-534-5640

**WEB:** [LincolnCountyMuseum.org](http://LincolnCountyMuseum.org)

**SEASON/HOURS OF OPERATION:**

**May 1–September 30:**

Mon–Sat, 9am–5pm

Sundays, 1pm–5pm

Or by appointment

**ADMISSION:** Admission charged



## North Platte Canteen Festival

North Platte highlights the patriotism and volunteerism of the World War II Canteen during this festival each fall. Enjoy shopping the fall market in the Historic Canteen District, listen to big band style music performances, and watch theatrical renditions that celebrate this enormous volunteer effort that served over 6 million service persons.

**ADDRESS:** Downtown North Platte – Historic Canteen District

**WEB:** [VisitNorthPlatte.com/events/annual-events-festivals/](http://VisitNorthPlatte.com/events/annual-events-festivals/)

**SEASON/HOURS OF OPERATION:** Held annually in the fall.

**ADMISSION:** Admission charged for some events





## NEBRASKALand DAYS

The official celebration of the state of Nebraska and our western heritage. Four nights of award-winning Buffalo Bill PRCA Rodeo action, big-name concert entertainment, parades, Frontier Revue, beer tasting, food and much, much more. The Buffalo Bill Rodeo was started by its namesake in 1882 and is recognized as the World's first spectator rodeo.

The Arena is located on land that Cody once owned, across the street from his Scout's Rest Ranch. The Rodeo features Hall of Fame and National Finals talent. NEBRASKALand DAYS is a Rocky Mountain Country Music Festival of the Year award winner.

**OFFICE ADDRESS:** 2801 Charlie Evans Dr.

**PHONE:** 308-532-7939 or 888-313-5606

**WEB:** [NebraskaLandDays.com](http://NebraskaLandDays.com)

**SEASON:** Held annually the third week of June.

**ADMISSION:** Many events are free.

Admission charged for rodeo, concerts and other events at the Wild West Arena.





## Fort Cody Trading Post

Wild West Museum, Buffalo Bill's Wild West Show in miniature and great shopping in America's kitschiest roadside attraction!

**ADDRESS:** 221 Halligan Dr.

**PHONE:** 308-532-8081

**WEB:** FortCody.com

**SEASON/HOURS OF OPERATION:**

**MEMORIAL DAY WEEKEND THRU**

**2ND WEEK IN AUGUST:**

Daily, 9am–9pm

**WINTER HOURS:**

Mon–Sat, 9am–5:30pm;

Sun, 12pm–5:30pm

**SPRING AND FALL HOURS:**

Mon–Sat, 9am–6pm;

Sun, 12pm–6pm

**ADMISSION:** Free



## North Platte Pow Wow

The North Platte Pow Wow showcases the culture and traditions of Native Americans through singing and drumming. During the Pow Wow there are also vendors selling authentic Native American goods.



**ADDRESS:** 2921 Scouts Rest Ranch Road

**PHONE:** 308-529-9516

**WEB:** VisitNorthPlatte.com/north-platte-pow-wow/

**HOURS:** Held Annually the third weekend in July.

**ADMISSION:** Admission Charged



## Golden Spike Tower

A panoramic view of Union Pacific's Bailey Yard will greet railfans from the two observation decks of the Golden Spike Tower.

The Guinness Book of World Records certifies Bailey Yard as the world's largest railroad classification yard, with a mind-boggling array of more than 315 miles of track, accommodating up to 150 trains a day. Ask questions and hear "behind the scenes" stories from their guides who once worked on Bailey Yard.

**ADDRESS:** 1249 N. Homestead Rd.

**PHONE:** 308-532-9920 or 866-338-7596

**WEB:** GoldenSpikeTower.com

**SEASON/HOURS OF OPERATION:**

**Memorial Day–Labor Day:** Daily, 9am–7pm

**Labor Day–Memorial Day:** Daily, 9am–5pm





## Union Pacific Railroad Bailey Yard

Union Pacific's Bailey Yard is the largest railroad classification yard in the world. The massive yard covers 2,850 acres, handling 14,000 rail cars every 24 hours. Bailey Yard is a working rail yard and is not open to the public, view this massive operation from the Golden Spike Tower.



**ADDRESS:** 4000 W. Front St.

**WEB:** [VisitNorthPlatte.com/things-to-do/attractions/trains-railroads/bailey-yard/](http://VisitNorthPlatte.com/things-to-do/attractions/trains-railroads/bailey-yard/)

## Cody Park Railroad Museum

The only Challenger 3900 series steam locomotive on static public display, plus a 6900 series diesel locomotive. Also on display is a fully restored railroad depot, rail cars, cabooses and railroad memorabilia.



**ADDRESS:** 1601 N. Jeffers St.

**WEB:** [VisitNorthPlatte.com/things-to-do/attractions/trains-railroads/cody-park-railroad-museum/](http://VisitNorthPlatte.com/things-to-do/attractions/trains-railroads/cody-park-railroad-museum/)

**SEASON/HOURS OF OPERATION:**

**May 1st thru the 4th full weekend of September:**

Mon–Sat, 10am–7pm; Sun, 12pm–6pm

**ADMISSION:** Free

## North Platte Rail Days

### Annual Rail Celebration

An annual celebration of North Platte's spirit and origins draws railroad enthusiasts from around the world who gather for on-site tours of Bailey Yard, model train expo and much more.

**ADDRESS:** Various Locations

**PHONE:** 308-532-9920

**WEB:** [GoldenSpikeTower.com](http://GoldenSpikeTower.com)

**SEASON:** Held annually in August, visit website for dates.





## Fun in the Water

The Sutherland Reservoir, Lake Maloney, and Jeffrey Lake all offer great opportunities for water sports, fishing and camping.

If you want a unique taste of Nebraska fun then you need to give tanking a shot. It's the genius of rural America at its finest as you lazily float down the North Platte River in a stock tank with friends, family, and beverages.

**WEB:** [VisitNorthPlatte.com/things-to-do/outdoors/water-activities/](http://VisitNorthPlatte.com/things-to-do/outdoors/water-activities/)

## Dusty Trails Outdoor Specialists

### Horseback Riding and Tanking

Whatever outdoor adventure you're looking for, Dusty Trails can create it for you. Horseback riding, tanking or canoeing, and even a petting zoo.

Call for your Water/Outdoor Adventure or Trail Rides at Buffalo Bill State Historical Park.

**ADDRESS:** 2617 N. Buffalo Bill Ave.

**PHONE:** 308-530-0048

**WEB:** [DustyTrails.biz](http://DustyTrails.biz)

**SEASON/HOURS OF OPERATION:**

Open all year by appointment for all adventures.

**TRAIL RIDES AT BUFFALO BILL STATE HISTORICAL PARK:**

**MEMORIAL DAY–LABOR DAY:**

Fri–Sun, 12pm–6pm for walk-on trail rides.

**ADMISSION:** Admission charged



## Axes and Aces

Axes & Aces is a fun family centered restaurant and entertainment space! They feature pizza, burgers, sandwiches, salads, wings, and more. They also offer a full service bar. They have two state-of-the-art golf simulators, four axe throwing lanes, three indoor pickleball courts, an outdoor courtyard, and they have sweet treats, including ice cream from the local ice creamery, Double Dips!

**ADDRESS:** 675 E North Lake Road

**PHONE:** 308-221-1040

**WEB:** .axesnaces.com

**SEASON/HOURS OF OPERATION:**

Tues–Thursday & Sunday,  
11am–9pm

Friday & Saturday, 11am–10pm

Closed on Monday

**ADMISSION:** Admission charged for activities



## Potter's Pasture

The Pasture is more than 100 miles of mountain bike trails on 1,200 acres. This privately owned, publicly accessible network of trails is located in the canyonlands of southern Lincoln County. Cattle are grazed on the land, which helps to keep the trails open.

**WEB:** VisitNorthPlatte.com/  
potters-pasture/

**TO GET THERE:**

Take I-80 to Brady (exit 199).

Go south on 56D, at 2.7 miles turn right on Brady-Moorefield Rd. At 9.2 miles, the pavement ends. At 9.7 miles on the left is the entrance to Old Camp. At 11.0 miles, turn left on Jeffrey Rd. At 12.7 miles, turn right into the campground, the sign will say Potter's Pasture New Camp.





## Cody Go-Karts

Rides and games for the entire family—water slides, go-kart racetracks, and bumper boats.

**ADDRESS:** 805 Halligan Dr.

**PHONE:** 308-534-8277

**WEB:** [CodyGoKarts.com](http://CodyGoKarts.com)

**SEASON/HOURS OF OPERATION:**

**Memorial Day–Labor Day:** 10:30am–10pm

Open weekends Pre- and Post-Season, weather permitting.

**ADMISSION:** Admission charged

## Crystal Cave and Falls Adventure Mini Golf

The Crystal Cave and Falls Adventure Mini Golf course is the perfect place for people of all ages and skills to enjoy a game of mini golf while taking in the botanical gardens, caves, waterfalls, and more! Visit the working blacksmith shop and peruse the unique items available in the gift shop. And don't forget to be on the lookout for dinosaur tracks hidden throughout the course. It's an adventure you don't want to miss!

**ADDRESS:** 805 Halligan Dr.

**PHONE:** 308-539-2247

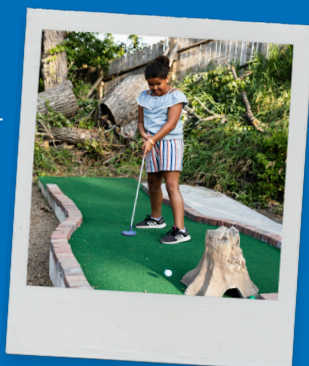
**WEB:** [VisitNorthPlatte.com/crystal-cave-falls-adventure-mini-golf/](http://VisitNorthPlatte.com/crystal-cave-falls-adventure-mini-golf/)

**SEASON/ HOURS OF OPERATIONS:**

Open Memorial Day Weekend–  
Labor Day Weekend

10:30am–9:00pm, 7 Days a Week

**ADMISSION:** Admission charged



## WB's Fun Center

WB's Fun Center offers 18 beautifully restored bowling lanes—some of the best in the state! You'll also enjoy Laser Tag, Axe Throwing and more than 30 games in the arcade.

WB's has the most Virtual Reality games from Denver to Omaha. Ride roller coasters, fight enemy invaders, or race racecars in this 3D experience.

**ADDRESS:** 1100 S. Jeffers St.

**PHONE:** 308-532-5720

**WEB:** wbsfun.com

**HOURS OF OPERATION:**

Daily, 11am–10pm

**ADMISSION:** Admission charged



## North Platte Area Children's Museum

A fun hands-on learning center offering children a place to experience the wonders of science, technology, culture and the arts in a unique and interactive atmosphere.

**ADDRESS:** 314 N. Jeffers St.

**PHONE:** 308-532-3512

**WEB:** NPChildrensMuseum.com

**HOURS OF OPERATION:**

Tues–Fri, 10am–5pm;

Sat, 9am–4pm

**ADMISSION:** Admission charged



## Cody Park

Features kids rides including: a restored antique carousel, train, miniature ferris wheel and tiny tot tilt-a-whirl to go along with animal displays, food concessions, sports fields, disc golf, a swimming pool as well as camping areas, BBQ pits, and let's not forget their famous ice cream. It's a great place for the whole family.

**ADDRESS:** 1601 N. Jeffers St.

**SEASON/HOURS OF OPERATION:**

**Cody Park:** Daily, Sunrise–Sunset

**Kiddie Rides & Concessions:**

April–end of September:

Mon–Fri, 5pm–10pm; Sat, 12pm–

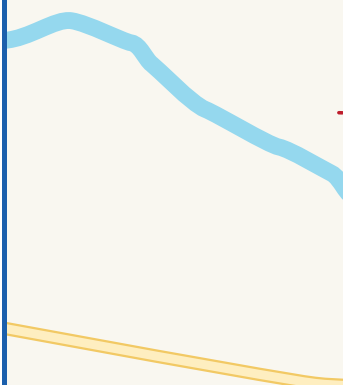
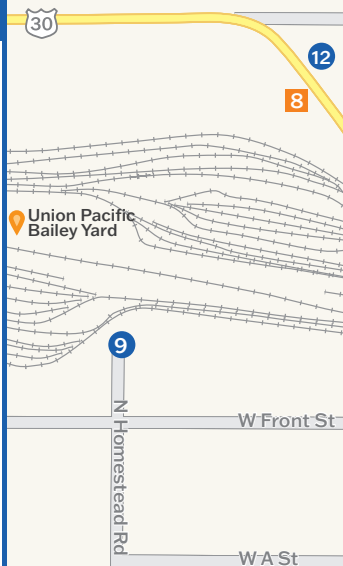
10pm; Sun, 12pm–9pm

**ADMISSION:** Admission Charged for Some Activities



# Attractions

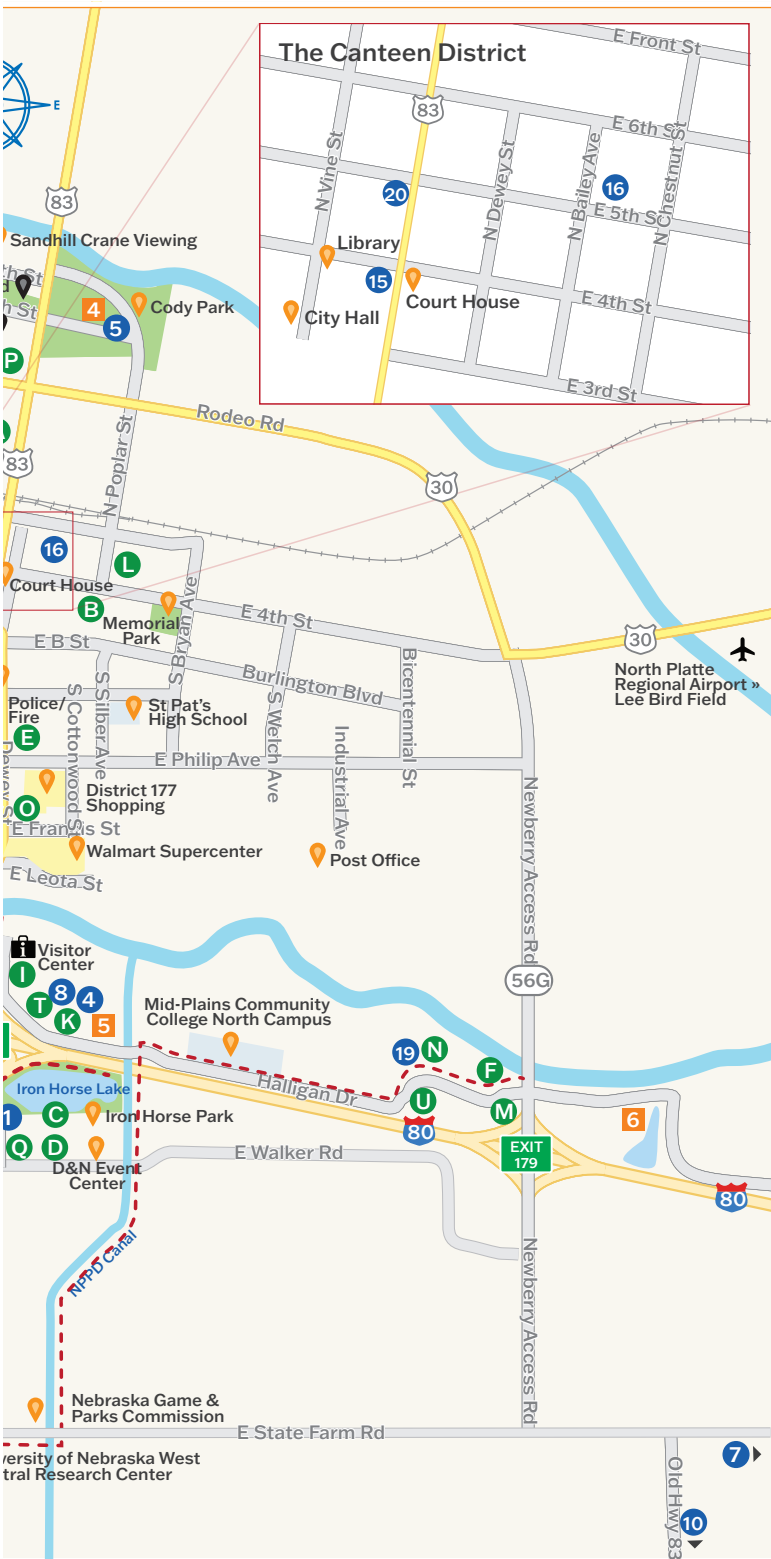
- 1 **20th Century Veterans Memorial and Law Enforcement Memorial**  
2811 S. Jeffers St.
- 2 **Axes and Aces**  
675 E North Lake Rd.
- 3 **Buffalo Bill State Historical Park**  
2921 Scouts Rest Ranch Rd.
- 4 **Cody Go-Karts/ Crystal Cave & Falls Adventure Mini Golf**  
805 Halligan Dr.
- 5 **Cody Park, Train Museum, Kiddie Rides**  
1601 N. Jeffers St.
- 6 **Dusty Trails Horseback Riding/Tanking**  
2617 N. Buffalo Bill Ave.
- 7 **Feather River Vineyard**  
5700 SE State Farm Rd.
- 8 **Fort Cody Trading Post**  
221 Halligan Dr.
- 9 **Golden Spike Tower and Visitor Center**  
1249 N. Homestead Rd.
- 10 **Grain Bin Antique Town**  
10641 S. Old Highway 83 Rd.
- 11 **Homestead Pumpkin Patch**  
6459 S. Homestead Rd.
- 12 **Lincoln County Fairgrounds & Raceway**  
5015 Rodeo Rd.
- 13 **Lincoln County Historical Museum**  
2403 N. Buffalo Bill Ave.
- 14 **NEBRASKAland Days**  
2801 Charlie Evans Dr.
- 15 **North Platte Area Children's Museum**  
314 N. Jeffers St.
- 16 **North Platte Community Playhouse**  
301 E. 5th St.
- 17 **North Platte Recreation Complex**  
1300 McDonald Rd.
- 18 **Pals Brewing Company**  
4520 S. Buffalo Bill Ave.
- 19 **Peg Leg Brewing**  
2519 Halligan Dr.
- 20 **Prairie Arts Center**  
416 N. Jeffers St.
- 21 **WB's Fun Center**  
1100 S. Jeffers St.



11 2 Miles South on S. Homestead Rd.









# Hotels

- A 83 Motel**  
920 N. Jeffers St.  
308-532-2313
- B Americas Best Value Inn**  
602 E. 4th St.  
308-534-4020
- C Avid / Candlewood Suites**  
202 E. Eugene Ave.  
308-252-1505
- D Best Western Plus**  
3201 S. Jeffers St.  
308-534-3120
- E Blue Spruce Motel**  
821 S. Dewey St.  
308-534-2600
- F Comfort Inn & Suites**  
2809 Halligan Dr.  
308-562-2736
- G Days Inn**  
3102 S. Jeffers St.  
308-532-9321 / 800-329-7466
- H Fairfield Inn and Suites**  
319 W. South River Rd.  
308-532-9900
- I Hampton Inn**  
200 Platte Oasis Pkwy.  
308-534-6000 / 800-426-7866
- J Holiday Inn Express**  
300 Holiday Frontage Rd.  
308-532-9500 / 800-562-9500
- K Hospitality Inn**  
501 Halligan Dr.  
308-532-6650 / 800-532-0151
- L Husker Inn**  
721 E. 4th St.  
308-534-6960
- M La Quinta Inn & Suites**  
2600 Eagles Wings Pl.  
308-534-0700 / 866-534-0700
- N Motel 6 / Studio 6**  
2701 Halligan Dr.
- O North Platte Inn & Suites**  
1209 S. Dewey St.  
308-532-0130 / 800-678-4025
- P Park Motel**  
1302 N. Jeffers St.  
308-532-6834 / 800-456-5450
- Q Quality Inn**  
2901 S. Jeffers St.  
308-532-6144
- R Ramada**  
2102 S. Jeffers St.  
308-532-9090 / 800-760-3333
- S Super 8 Motel**  
220 Eugene Ave.  
308-532-4224 / 800-800-8000
- T Travelodge**  
451 Halligan Dr.  
308-535-9900
- U TRU by Hilton**  
2400 Halligan Dr.  
308-532-8700

# Golf Courses

- 1 Indian Meadows**  
2746 W. Walker Rd.
- 2 Lake Maloney**  
606 Birdie Ln.
- 3 Rivers Edge**  
1008 W. 18th St.

# RV & Camp Grounds

- 1 A-1 Sunset Mobile Park**  
3120 Rodeo Rd.
- 2 Buffalo Bill SRA**  
2921 Scouts Rest Ranch Rd.
- 3 CB's Hideaway**  
206 N. Lake Rd.
- 4 Cody Park Campground**  
1400 N. Jeffers St.
- 5 Holiday RV Park**  
601 Halligan Dr.
- 6 I-80 Lakeside Camping**  
3800 Hadley Rd.
- 7 Lake Maloney SRA**  
N. Lake Rd.
- 8 Lincoln Highway RV Park**  
4684 W. Hwy 30



## Sandhill Cranes

Each spring an estimated 300,000 Sandhill Cranes spend about six weeks on the 25 mile stretch of the North Platte River Valley between North Platte and Sutherland. At night they roost on the North Platte River, rising each morning to spend the day dancing and foraging in the meadows and crop fields. Early scouts will begin arriving in early February. Numbers will continue to grow until peaking in mid-March, remaining high through the end of March. By the middle of April they will all be gone. The North Platte area offers a variety of Sandhill Crane experiences, including public blinds, private guided blinds and guided bus tours. Visitors can even combine the experiences with Prairie Chicken dances later in March and early April.

**WEB:** [VisitNorthPlatte.com/things-to-do/attractions/sandhill-cranes/](http://VisitNorthPlatte.com/things-to-do/attractions/sandhill-cranes/)

**SEASON/HOURS OF OPERATION:**

Early March through Mid-April.

Check website for tour offerings and dates.

For guided tours, contact Dusty Trails at 308-530-0048

**ADMISSION:** Some free public blinds available. Admission charged for guided tours



## Homestead Pumpkin Patch

Family fun never ends at the Homestead Pumpkin Patch, with acres of pumpkins, a corn maze, zipline, jump pillow and so much more. Enjoy concession stands, fire pits and all the fixins' for s'mores.

**ADDRESS:** 6459 S. Homestead Rd.

**PHONE:** 308-398-6444

**WEB:**

HomesteadPumpkinPatch.com

**SEASON/HOURS OF**

**OPERATION:**

Open weekends mid-September through the end of October.

**ADMISSION:** Admission charged



## Dusty's Pumpkin Fest

Dusty Trails knows how to do a Pumpkin Patch right! Tons of kids games and activities, horseback rides and pumpkins galore take over the Buffalo Bill State Historical Park throughout the month of October.

**ADDRESS:** 2921 Scouts Rest Ranch Rd.

**PHONE:** 308-530-0048

**WEB:** DustyTrails.biz

**SEASON/HOURS OF**

**OPERATION:**

Weekends in October

**ADMISSION:** Admission charged





## Nebraska's Christmas Destination

Many long-standing holiday events makes North Platte the perfect destination to create Christmas memories.

### Christmas at the Cody's

For more than two decades Buffalo Bill's stately home, his barn and log cabin, and the grounds of the Buffalo Bill State Historical Park in North Platte are decorated by local non-profit organizations to bring Christmas cheer to visitors.

**WEB:** [VisitNorthPlatte.com/christmas-at-the-cody/s](http://VisitNorthPlatte.com/christmas-at-the-cody/s)

**SEASON/HOURS OF OPERATION:** Select dates in December

Check website for details

**ADMISSION:** Admission charged



## Cody Park's Santa's Workshop

Santa's workshop in Cody Park has been a North Platte holiday tradition for more than 75 years. 15 tiny houses filled with animatronic displays celebrate all aspects of the Christmas season, from busy elves toiling away in the workshop to joyous children on Christmas morning. Thousands of Christmas lights fill the park, and there's even an Island of Misfit Toys.

Holiday treats can be purchased at the concession stand and the fun includes kiddie rides, the historic carousel and horse and tractor drawn rides.

**ADDRESS:** 1601 N. Jeffers St.

**PHONE:** 308-535-6700

**WEB:** [VisitNorthPlatte.com/santas-workshop/](http://VisitNorthPlatte.com/santas-workshop/)

**SEASON/HOURS OF OPERATION:**

Weekend after Thanksgiving–  
December 30th



## Christmas Village

The Lincoln County Historical Museum's Lighted Christmas Village Drive Thru has quickly become a beloved holiday tradition. The Western Heritage Village's delightful collection of historical buildings are each filled with Christmas cheer by local businesses and organizations, all enjoyed from the comfort of your vehicle.

**ADDRESS:** 2403 N. Buffalo Bill Ave.

**PHONE:** 308-534-5640

**WEB:** [VisitNorthPlatte.com/christmas-village/](http://VisitNorthPlatte.com/christmas-village/)

**SEASON/HOURS OF OPERATION:**

Select weekends in December

**ADMISSION:** Donation





## Pals Brewing Company

Located on four beautiful acres, Pals Taproom and Outdoor Beer Oasis, is the perfect spot to relax while enjoying locally handcrafted brews. The beers are produced on site in small batches, so they are always fresh and flavorful. With specialty pizzas and hors d'oeuvres you won't leave hungry. The warm and friendly staff will treat you like a part of the Oettinger family. You're always at home with Pals!

**ADDRESS:** 4520 S. Buffalo Bill Ave.

**PHONE:** 308-221-6715

**WEB:** PalsBrewingCompany.com

**SEASON/HOURS OF OPERATION:**

Sunday–Wednesday: 11am–9pm

Thursday–Saturday: 11am–10pm

## Western Nebraska Craft Beer Festival

The Western Nebraska Craft Beer Festival showcases beer, wine, and spirits from 15+ Nebraska breweries. Sample the brews with a commemorative tasting glass, enjoy entertainment, and play numerous outdoor games. Food is available for purchase.

**PALS BREWING COMPANY**

**ADDRESS:** 4520 S. Buffalo Bill Ave.

**PHONE:** 308-221-6715

**WEB:** VisitNorthPlatte.com/  
western-nebraska-beer-festival/

**SEASON/HOURS OF OPERATION:**

Held annually in September.

**ADMISSION:**

Admission charged



## Peg Leg Brewing Company

Peg Leg Brewing's cheery tap room and outdoor patio are conveniently located right off of Interstate 80 at exit 179 and within walking distance of four hotels. They offer a selection of alcoholic beverages along with a wide variety of their own craft beers. Pub snacks are always available.

**ADDRESS:** 2519 Halligan Dr.

**PHONE:** 308-252-1658

**SEASON/HOURS OF OPERATION:**

Mon–Fri, 4pm–10pm;

Sat, 1pm–10pm; Sun, Closed



## Feather River Vineyards

Located in the scenic and lush Loess Hills just south of North Platte, the vineyard is the largest in the state. Feather River is open for tastings, private parties and group tours.

**ADDRESS:** 5700 SE State Farm Rd.

**PHONE:** 308-696-0078

**WEB:** Feather-River.com

**SEASON/HOURS OF OPERATION:**

Friday–Sunday 1pm–5pm;

Or by appointment



## Old Depot Vineyard and Winery

Old Depot Vineyard and Winery is a family-friendly winery with delicious Nebraska wine and menu items. Come out and let them pour you a glass of wine and make you feel welcome.

**ADDRESS:** 33651 Banner Rd., Brady

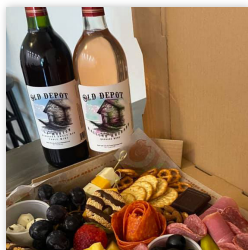
**PHONE:** 308-584-2251

**WEB:** OldDepotVineyard.com

**SEASON/HOURS OF OPERATION:**

Friday: 5pm–9pm. Sat: 12pm–9pm

Sun: 11pm–6pm



## Grain Bin Antique Town

A one-of-a-kind antiquing destination. Grain Bin Antique Town has salvaged and repurposed historic grain bins and filled them with antique treasures of all kinds.

**ADDRESS:** 10641 S. Old Highway 83 Rd.

**PHONE:** 308-539-7401

**WEB:** [VisitNorthPlatte.com/things-to-do/attractions/grain-bin-antique-town/](http://VisitNorthPlatte.com/things-to-do/attractions/grain-bin-antique-town/)

**SEASON/HOURS OF OPERATION:**

Year-Round: Wed-Sat, 10:30am-5pm

\*Hours may vary seasonally, check Grain Bin Antique Town's Facebook page for current hours.



## Prairie Arts Center

North Platte's Prairie Arts Center is housed in the historic 1913 federal building, a National Register site that is one of only 18 Italian Renaissance buildings in Nebraska.

The Prairie Arts Center houses 3D art workshops and classroom space, an exhibit hall and gift shop.

**ADDRESS:** 416 N. Jeffers St.

**PHONE:** 308-534-5121

**WEB:** [PrairieArtsCenter.org](http://PrairieArtsCenter.org)

**SEASON/HOURS OF OPERATION:**

Tues-Sat, 11am-4pm



## North Platte Community Playhouse

Housed in the historic Fox Theater, the North Platte Community Playhouse hosts many productions each year. The historic Fox theater was originally built as a movie and vaudeville theater in 1929.

**ADDRESS:** 301 E. 5th St.

**PHONE:** 308-532-8559

**WEB:** [NorthPlatteCommunityPlayhouse.com](http://NorthPlatteCommunityPlayhouse.com)

**SEASON/HOURS OF OPERATION:**

Events and Plays are held year-round.

Visit website for detailed dates and times.





## 20th Century Veterans Memorial

The five major branches of the armed forces and the five major conflicts of the 20th century are memorialized by larger-than-life bronze statues and a fifteen-foot-tall brick bas-relief mural.

**ADDRESS:** 2811 S. Jeffers St.

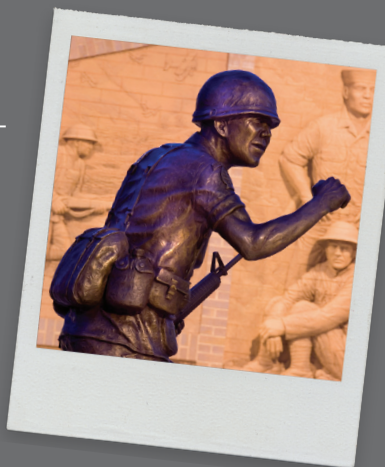
**PHONE:** 308-532-6579

**WEB:** [VisitNorthPlatte.com/20th-century-veterans-memorial/](http://VisitNorthPlatte.com/20th-century-veterans-memorial/)

**SEASON/HOURS OF OPERATION:**

Open daily, year-round, sunrise to sunset

**ADMISSION:** Free



## Lincoln County Law Enforcement Memorial

In Memory of those who have made the ultimate sacrifice.

Located next to the 20th Century Veterans Memorial

**ADDRESS:** 2811 S. Jeffers St.

**ADMISSION:** Free



## Fort McPherson National Cemetery

Established in 1863, Fort McPherson became Nebraska's first National Cemetery in 1873 and is the final resting place of veterans of the Indian Wars, Spanish American War, Civil War, World Wars I and II, Korea, Vietnam, Persian Gulf and the current conflicts in Iraq and Afghanistan.

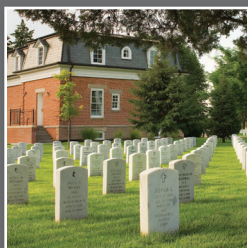
**ADDRESS:** 12004 S. Spur 56A, Maxwell

**PHONE:** 308-582-4433

**WEB:** [VisitNorthPlatte.com/fort-mcpherson-national-cemetery/](http://VisitNorthPlatte.com/fort-mcpherson-national-cemetery/)

**SEASON/HOURS OF OPERATION:** Open daily, year-round, sunrise to sunset

**ADMISSION:** Free



# Restaurants & Bars

## Local Favorites

**Another Round Sports Bar and Grill**  
1008 W. 18th St. / 308-534-2080

**Brighams's Taproom**  
1100 S. Jeffers / 308-532-572

**Capones Bar and Grill**  
2520 Halligan Dr. / 308-534-4340

**The Cedar Room**  
505 N. Dewey / 308-532-4825

**D'Leon's**  
1002 Rodeo Rd. / 308-221-6018

**Dave's Place**  
1510 E. 4th St. / 308-532-3922

**Espresso Shop**  
408 N. Chestnut / 308-534-9550

**Good Life on the Bricks**  
402 N. Dewey / 308-252-1044

**Hitchin' Post \***  
110 N. Main Street, Brady / 308-584-3777

**Merrick's Ranch House**  
1220 E. 4th St / 308-532-8200

**Noel's**  
320 E Francis / 308-252-1313

**North 40 Chophouse**  
520 N. Jeffers / 308-221-6688

**Old Depot Winery \***  
33651 E. Banner Rd., Brady  
308-584-2251

**Pals Brewing Company**  
4520 S. Buffalo Bill Ave.  
308-221-6715

**Peg Leg Brewing**  
2519 Halligan Dr. / 308-252-1658

**Pop Corner**  
1847 W. A St. / 308-532-0323

**Runza**  
410 S. Jeffers / 308-534-4302  
202 E. Leota / 308-534-6182

**T's Bar & Grill**  
241 S. Commercial Ave., Wallace /  
308-387-4333

## International Flavor

**Antonio's Italian Bistro**  
520 E. Phillip, Ste. 2 / 308-534-3683

**King Buffet/ Mongolian Grill**  
402 E. Leota, Ste. 1 / 308-534-3683

**La Casa Del Rios**  
1911 E. 4th St. / 308-221-6907

**La Hacienda**  
321 E. 6th St. / 308-532-0148

**Lina's Mexican Restaurant**  
204 S. Jeffers / 308-252-0018

**Luigi's Italian Restaurant**  
502 S. Jeffers / 308-221-2961

**Margaritas**  
104 N. Jeffers / 308-532-4900

**Oriental House of Foods**  
508 N. Dewey / 308-534-0422

**Royal Wok**  
1318 S. Chestnut / 308-532-8145

**San Pedro**  
1002 S. Jeffers / 308-532-9575

**Szechuan Famous Foods & Sushi Bar**  
320 Rodeo Road/ 308-221-6906

**Tempura Japanese Restaurant**  
221 E. 6th St. / 308-532-0711

## Sweet Treats

**Double Dips Ice Creamery**  
522 N. Dewey / 308-660-2264

**Cold Stone Creamery**  
1402 E. Leota, Ste. 2 / 308-534-5429



\*Restaurants located near North Platte

**Cody Park Concessions -  
Open Seasonally**  
1310 S. Jeffers / 308-534-1020

### Bars

**Brothers Tavern**  
215 E. 6th St. / 308-534-3670

**House Bar**  
1601 E. 4th St. / 308-534-7171

**Hub Bar**  
702 N. Jeffers / 308-532-5030

**Kelsey's Place Bar**  
219 Rodeo Rd. / 308-532-9941

**Longhorn Bar\***  
830 1st St., Sutherland / 308-386-2327

**Platte Bar**  
119 W 6th St. / 308-532-6300

### Coffee & Specialty Drinks

**Coffee Bin**  
1800 E. 12th / 308-534-4645

**Dunkin'**  
201 E. Platte Oasis Pkwy., #1  
308-221-6140

**Mug Coffee Shop\***  
810 1st St., Sutherland / 308-386-6568

**The Fix**  
321 S. Dewey St. / 308-530-4292

**Scooter's**  
1400 S. Dewey / 308-221-6952

**Spill the Tea**  
517 N. Dewey / 308-660-1481

**Starbucks**  
2020 S. Jeffers / 308-534-1228

### Pizza

**Boss' Pizza and Chicken**  
2102 S. Jeffers / 308-221-8844

**Domino's**  
1815 W. A St. / 308-534-0400

**Godfather's Pizza Express \***  
281 N. Highway 25, Sutherland  
308-386-2583

**Little Caesar's Pizza**  
411 S. Dewey / 308-534-4800

**Papa Murphy's**  
114 N. Jeffers / 308-532-5400

**Pizza Hut**  
202 S. Dewey / 308-532-5300

### National Favorites

**Applebee's Grill + Bar**  
102 Platte Oasis Pkwy. / 308-532-5292

**Denny's**  
3400 Newberry Rd. / 308-534-3447

**Penny's Diner**  
473 Halligan Dr. / 308-535-9900

**Perkin's Restaurant & Bakery**  
2302 S. Jeffers / 308-534-7375

**Ruby Tuesday**  
2320 S. Jeffers / 308-534-7829



## Hotels &amp; Motels

	# OF ROOMS	SUITES	BREAKFAST	INTERNET	POOL (In. / Out. / Heat)	REST / LOUNGE / RM SERVICE	HOT TUB / SAUNA	PETS ALLOWED
<b>83 Motel</b> 920 N. Jeffers St. / 308-532-2313	38				•			
<b>Americas Best Value Inn / 602 E. 4th St.</b> 308-534-4020 / 888-315-2378	33		•	•	O/H			•
<b>Avid/ Candlewood Suites</b> 202 E. Eugene Ave. / 308-252-1505	123	•	•	•				•
<b>Best Western Plus</b> 3201 S. Jeffers St. / 308-534-3120	146	•	•	•	I/H		•	•
<b>Blue Spruce Motel</b> 821 S. Dewey St. / 308-534-2600	14			•				•
<b>Comfort Inn &amp; Suites</b> 2809 Halligan Dr. / 308-562-2736	90	•	•	•	I/H		•	•
<b>Days Inn / 3102 S. Jeffers St.</b> 308-532-9321 / 800-329-7466	48	•	•	•	I/H		•	•
<b>Fairfield Inn and Suites</b> 319 W. South River Rd. / 308-532-9900	82	•	•	•	I/H		•	
<b>Hampton Inn / 200 Platte Oasis Pkwy.</b> 308-534-6000 / 800-426-7866	111	•	•	•	I/H		•	•
<b>Holiday Inn Express</b> 300 Holiday Frontage Rd. 308-532-9500 / 800-562-9500	151	•	•	•	I/H		•	
<b>Hospitality Inn / 501 Halligan Dr.</b> 308-532-0151 / 888-532-0151	64		•	•				•
<b>Husker Inn</b> 721 E. 4th St. / 308-534-6960	13			•				
<b>La Quinta Inn &amp; Suites</b> 2600 Eagles Wings Pl. 308-534-0700 / 866-534-0700	65	•	•	•	I/H		•	•
<b>Motel 6 / Studio 6</b> 2701 Halligan Dr. / 308-252-7038	91			•				•
<b>North Platte Inn &amp; Suites</b> 1209 S. Dewey St. 308-532-0130 / 800-678-4025	75	•		•				•
<b>Park Motel / 1302 N. Jeffers St.</b> 308-532-6834 / 800-456-5450	27							•
<b>Park Motel*</b> 1110 First St., Sutherland / 308-386-4384	19	•						•
<b>Quality Inn / 2901 S. Jeffers St.</b> 308-532-6144 / 800-228-5150	90	•	•	•	I/H			•
<b>Ramada by Wyndham / 2102 S. Jeffers St.</b> 308-532-9090 / 800-760-3333	123	•	•	•	I/H	R	•	•
<b>Super 8 Motel / 220 Eugene Ave.</b> 308-535-1805 / 800-800-8000	110		•	•				•
<b>Travelodge</b> 451 Halligan Dr. / 308-535-9900	135			•				•
<b>TRU by Hilton</b> 2400 Halligan Dr. / 308-532-8700	98		•	•				•

\*Lodging/Golf Courses located near North Platte

# Campgrounds

	# OF UNITS	PULL-THRU SITES	MAX. AMPS AVAIL.	GRILL / FIRE GRATES	FULL HOOK UP	LAUNDRY	PLAYGROUND	TAKES RESERVATIONS	HANDICAP FACILITIES
<b>A-1 Sunset Mobile Park</b> 3120 Rodeo Rd. / 308-532-9182	28	30 AND 50							
<b>Buffalo Bill State Historical Park</b> 2921 Scouts Rest Ranch Rd. 308-535-8035 outdoornebraska.ne.gov	23	30 AND 50	•				•	•	
<b>CB's Hideaway</b> 206 N. Lake Rd. / 308-539-3985	39	30 AND 50		•		•			
<b>Cody Park</b> 1400 N. Jeffers / 308-535-6700	40	•	•			•	•	•	
<b>Holiday RV Park</b> 601 Halligan Dr. (I-80 Exit177) 308-534-2265 / 1-800-424-4531 holidayparkne.com	100	•	30 AND 50	•	•	•	•		
<b>Kansas Point</b> Kansas Point Dr. 308-535-8025	50		50	•					
<b>Lake Maloney State Recreation Area</b> North Lake Rd. / 308-535-8025	200	•	50	•		•			
<b>I-80 Lakeside Camping</b> 3800 Hadley Rd. 308-534-5077 / 877-648-2267	89	•	30 AND 50	•	•	•	•		•
<b>Lincoln Highway RV Park</b> 4684 W. Hwy 30. 308-534-4910 / 877-534-4910 lincolnhighwayrvpark.com	80	•	30 AND 50		•	•	•		•
<b>Oregon Trail Golf Course Campground*</b> 31200 W. Tower Rd., Sutherland 308-386-4653	81	•	30 AND 50	•				•	
<b>Sutherland Reservoir State Recreation Area*</b> Sutherland Reservoir Inlet, S. Highway 25, Sutherland		•		•				•	

# Golf

**Indian Meadows** | 9 Hole, Public  
2746 W. Walker Rd., North Platte  
308-532-6955

**Lake Maloney Golf Club** | 18 Hole, Public  
608 Birdie Ln., North Platte  
308-532-9998

**River's Edge Golf Course** | 18 Hole, Public  
1008 W. 18th St., North Platte  
308-532-7550

**Oregon Trail Golf Course\*** | 9 Hole, Public  
31200 W. Tower Rd., Sutherland  
308-386-4653





## NORTH PLATTE, NEBRASKA

### EVENT CALENDAR

To get a complete list of upcoming events, go to  
[VisitNorthPlatte.com/event-calendar](http://VisitNorthPlatte.com/event-calendar)

### VISITOR CENTER HOURS

Memorial Day Weekend thru September 30th:  
Mon–Fri, 8am–5:30pm / Sat, 9am–5:30pm / Sun, 10am–4pm

October 1st thru Memorial Day:  
Mon–Fri, 8am–5pm / Sat, 10am–4pm / Sun, 12pm–4pm

### CONTACT

101 Halligan Dr., North Platte, NE 69101  
[info@VisitNorthPlatte.com](mailto:info@VisitNorthPlatte.com)  
308-532-4729

### DISCOVER MORE AT

[VisitNorthPlatte.com](http://VisitNorthPlatte.com)

