

SECTION B

ATTRACTIONS

Learn what Oklahoma City attractions have planned for you this year. See who's doing behind the scenes tours, who has special tour ideas and what special events are being offered.

45th Infantry Museum

American Banjo Museum

First Americans Museum

National Cowboy & Western Heritage Museum

Oklahoma City Museum of Art

Oklahoma City National Memorial & Museum

Oklahoma Contemporary Arts Center

Oklahoma History Center

Oklahoma Railway Museum

Oklahoma River Cruise

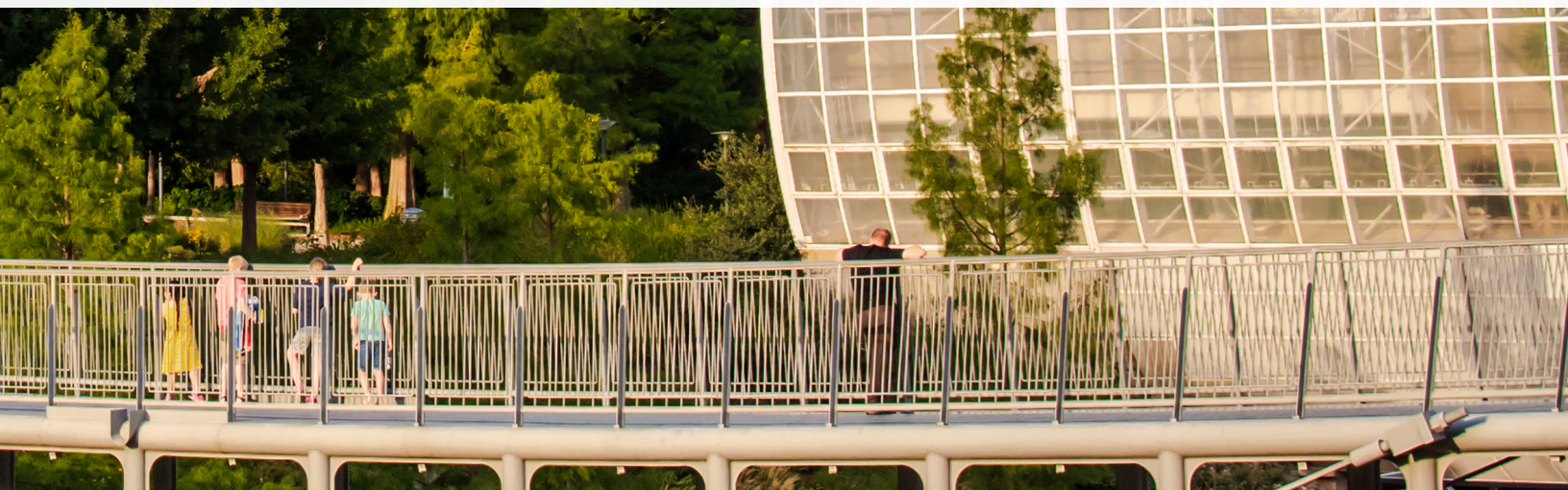
Remington Park

Ride OKC

Science Museum Oklahoma

Skeletons: Museum of Osteology

Stockyards City





45TH INFANTRY DIVISION MUSEUM

The 45th is the state's military history museum. 27,000 sf of exhibit, 15 acre military park with over 60 tanks, artillery, aircraft and ancillary equipment on display. Inside you see the third largest military firearms collection in the nation, the largest collection of items once the personal property of Adolf Hitler on public display in the world and the museum is in possession of the largest collection of Bill Mauldin's "Willie and Joe" cartoons in existence. Other exhibits include the liberation of Dachau, WWI centennial exhibit, Iraq and Afghanistan exhibit and much more.

For a complete list of our COVID restrictions please see our Facebook page:
[Facebook.com/45thInfantryDivisionMuseum](https://www.facebook.com/45thInfantryDivisionMuseum)

Group Tour Rates:

FREE. Contact us for our rules as regards the visitation of groups of children. All groups should contact us at least a week in advance and make reservations. Due to COVID groups are restricted to ten persons, those ten must remain together and maintain a six foot interval from all other guests. Masks are optional at this time.

Hours of Operations:

Tuesday - Friday: 9:00 a.m. - 4:15 p.m.

Saturday: 10:00 a.m. - 4:15 p.m.

Sunday: 1:00 - 4:15 p.m.

Monday: Closed

Motorcoach Parking:

Yes, limited.

Special Group Offerings:

N/A

Restaurant On-Site:

N/A

Website:

45thdivisionmuseum.com

Contact:

Michael Gonzales, Curator

Phone: 405.424.5393

E-Mail: curator@45thdivisionmuseum.com



THE AMERICAN BANJO MUSEUM

The American Banjo Museum houses the largest collection of banjos on public display in the world with interpretive displays that present the history of the banjo from its humble African roots through its heyday during the roaring '20s to its present day voice in bluegrass, folk, jazz and world music. As the nation's only museum dedicated to America's instrument, the American Banjo Museum seeks to preserve the banjo's legacy and promote an appreciation of its history and heyday.

Group Tour Rates:

Museum tour only - \$5 pp

Museum & Performance - \$8 pp

Museum, Performance and Catered Lunch - \$17 pp

Lunch includes: Sub Sandwich, Chips, Cookies, Soft Drink

Minimum of 20 paid is required for special performances or lunch.

Performances are subject to availability of entertainer.

Hours of Operations:

Tuesday - Saturday: 11:00 a.m. - 6:00 p.m.

Sunday: Noon - 5:00 p.m.

Motorcoach Parking:

No - Groups can unload in front of museum but coaches must go elsewhere to park

Special Group Offerings: Senior Adults

Special Arrangements can be made for your group to enjoy a live performance while visiting the American Banjo Museum.

Restaurant On-Site:

N/A

Website:

Americanbanjomuseum.com

Contact:

Rachel Reichart

Phone: 405.604.2793

E-Mail: rachel@americanbanjomuseum.com



FIRST AMERICANS MUSEUM

FAM is committed to serving as a dynamic center promoting awareness and educating the broader public of the unique cultures, diversity, history, contributions and resilience of the First American Nations in Oklahoma today. The 175,000-square-foot museum, located at 659 First Americans Boulevard in Oklahoma City, showcases state-of-the-art exhibitions of First Americans history, culture and art; offer public and educational programs; a family discovery center; a full-service restaurant; catering; and a museum store featuring authentic, one-of-a-kind handmade items by premier First American artists.

Rates:

Admission: \$15
Tribal, Senior, Military, Student (13 & over): \$10
Youth (4-12): \$5
Child (3 & Under): Free
Group Tour - call for rates and details.

Hours of Operations:

Mon-Fri, 10:00 AM-5:00PM
Sat-Sun, 11:00 AM-5:00PM

Special Group Offerings:

Please call for Group Tour Rates and details. Visit famok.org for updates.

Restaurant On-Site:

Yes

Website:

Famok.org

Contact:

Ginny Underwood, Marketing and Communications Manager

Phone (office): 405.594.2116

Phone (cell): 405.229.7210

E-Mail: ginnyu@famok.org



NATIONAL COWBOY & WESTERN HERITAGE MUSEUM

The National Cowboy & Western Heritage Museum is America's premier institution of Western history, art and culture. Founded in 1955, the Museum, located in Oklahoma City, collects, preserves and exhibits an internationally renowned collection of Western history, material culture and art that stimulate dynamic programs to promote interest in the enduring legend of the American West. More than 12 million visitors from around the world have sought out this unique museum to gain better understanding of the West: a region and a history that permeates our national culture. From fine art, pop culture and firearms to Native American objects, historical cowboy gear, shopping and dining, the Museum tells America's story as it unfolds across the West.

Group Tour Rates:

Adults: \$10.75
Seniors: \$9.25
Students: \$9.25
Children (6 - 12): \$5
Children (5 - Under): Free

Hours of Operations:

Monday - Saturday: 10:00 a.m. - 5:00 p.m.
Sunday: Noon - 5:00 p.m.

Motorcoach Parking:

Free parking

Special Group Offerings:

A Date with the Duke, call for information.

Student Tours, see programs at <https://nationalcowboymuseum.org/learn-discover/school-tours>

Restaurant On-Site:

Museum Grill: Group Reservations Required Monday - Saturday 11:00 a.m. - 2:30 p.m.
Minimum Group Size: 15

Website:

Nationalcowboymuseum.org

Contact:

Shannon Strain

Phone: 405.478.2250

E-Mail: sstrain@nationalcowboymuseum.org



OKLAHOMA CITY NATIONAL MEMORIAL & MUSEUM

The vision has been ambitious - to remember and teach. The world was changed forever on April 19, 1995, after the premeditated attack by an American and his accomplices killed 168 innocent people, left hundreds injured and a community left to pick up the pieces and rebuild. This attack was before the word terrorism was on nightly news and even before social media filled inboxes. The Memorial & Museum was built through a community process where hundreds came together to decide what would become of the site. The process was as important as the end design. Today, the Memorial & Museum stand as a place of hope and healing and to teach the senselessness of violence through immersive exhibits, first person stories, interactive technology and artifacts.

This ambitious plan has often been family members, survivors, first responders and community leaders opening their arms, embracing the world's survivors and leading the way in helping communities heal, find strength, resilience and grow in the wake of tragedy. Lessons learned have been shared community to community. People have been inspired by the example forged here...Oklahoma City can and should continue to lead the way. How Oklahomans responded in 1995 in a community-wide display of unity became known around the world as the Oklahoma Standard. Despite this unspeakable tragedy, among the most lasting memories is the tenderness of the response. The Oklahoma City National Memorial & Museum gives you an opportunity to understand this important story.

Group Tour Rates (subject to change):

Groups of 15 or more

Adult \$13; Senior and Military \$11; Student \$7

Hours of Operations:

Monday - Saturday 9 a.m. - 5 p.m. and Sunday Noon - 5: p.m.

The Museum is a self-guided tour lasting approximately 1.5 hours.

The Outdoor Symbolic Memorial is open 24 hours a day, seven days a week.

Motorcoach Parking:

Free motorcoach parking is available.

Special Group Offerings - available by reservation:

Outdoor Orientation: National Park Service Rangers are available for onsite talks on the grounds. (no charge)

Performance Venue: The Survivor Tree promontory is the perfect acoustical stage for your group to sing or perform. We welcome performances. (no charge)

First Person Stories of Hope: Hear from people directly impacted by the bombing. These remarkable stories evoke feelings of compassion, hope and inspiration to live our lives more meaningfully. (\$2 pp add'l charge)

Archives Tour: A guided behind-the-scenes tour of the storage and preservation facility of the Memorial. (\$2 pp add'l charge)

Uncover - Discover STEM Lab: Experience the lessons learned from the bombing using large touch-screen tables. Work independently, then come together with your group to find solutions to the challenges. (\$2 pp add'l charge)

Website:

MemorialMuseum.com

Contact:

Tina Gilliland, CAE, Chief Experience Officer

Phone: 405.235.3005

E-Mail: tg@okcnm.org



OKLAHOMA CITY MUSEUM OF ART

The Oklahoma City Museum of Art—OKCMA—is the namesake visual arts organization of Oklahoma City. The Museum's 110,000 square foot facility, constructed in 2002, is located in the heart of downtown and is an anchor for a growing cultural district of the greater metropolitan area.

The Oklahoma City Museum of Art is one of the leading arts institutions in the region. The Museum presents a dynamic range of exhibitions organized from prestigious museums and collections throughout the world. The Museum's own diverse collection features highlights from North America, Europe and Asia, with particular strengths in American art and postwar abstraction. The permanent collection also boasts one of the world's largest public collections of Dale Chihuly glass, a major collection of photography by Brett Weston and the definitive museum collection of works by the Washington Color painter Paul Reed. The Oklahoma City Museum of Art is accredited by the American Alliance of Museums and is a member of the Association of Art Museum Directors.

Group Tour Rates:

Minimum/Maximum number of people for group rate: 15+ \$7 per Adult \$6.50 per senior (62+). Please note: pricing may vary for special exhibitions.

Hours of Operations:

Wednesday and Tuesday: 11 am–5 pm

Friday: 11am-8pm

Saturday: 10am-5pm

Sunday: 12pm-5

*Please note, the Museum's Dale Chihuly collection will be closed for reinstallation in April and May 2022

Motorcoach Parking:

None on site. Possible options available.

Special Group Offerings:

Docent-guided tours are available during regular business hours for groups of 10 or more people. Docent-guided tours must be booked at least three weeks in advance. Tours last approximately one hour. A maximum of 45-60 people may tour with a docent in the galleries per hour.

Website:

Okcma.com

Contact:

Corrie Reagan

Phone: (405) 278-8270

E-mail: tours@okcma.com



OKLAHOMA CONTEMPORARY ARTS CENTER

For more than 30 years, Oklahoma Contemporary has been a vital resource for contemporary art experiences of all kinds in the region. In our new home, we create opportunities for different communities to experience art, encounter new ideas and explore their creative potential through:

Group Tour Rates:

Standard Costs

- Groups 10 or less | \$60
- Groups 11-20 | \$120
- Groups 21-30 | \$180

Discount Costs

Discount available for veterans, ages 65+, university/ college students, non-profit organizations and certified educators.

- Groups 10 or less | \$50
- Groups 11-20 | \$100
- Groups 21-30 | \$150

Hours of Operations:

Wednesday-Saturday: 1:00 - 5:00pm

Sunday-Tuesday: Unavailable

Motorcoach Parking:

Yes

Restaurant On-Site:

Café Contemporary Hours: Open 9 a.m. - 6 p.m. Monday, Wednesday, Friday, Saturday and Sunday | 9 a.m. - 9 p.m. Thursday | Closed Tuesdays

Website:

Oklahomaccontemporary.org

Contact:

Rae Stone

Phone: 405.951.0000

E-mail: rstone@okcontemp.org



OKLAHOMA HISTORY CENTER

The Oklahoma History Center is a division of the Oklahoma Historical Society. The museum fulfills the Oklahoma Historical Society's mission through the application of the highest standards of collections care, the presentation of diverse exhibits and multi-disciplinary educational programs. Located on eighteen acres across from the Oklahoma State Capitol, the Oklahoma History Center is a beautifully designed exploration of Oklahoma—past to present. Within our 215,000 square-foot learning center are five galleries and a Research Center.

Group Tour Rates:

Group rate (10+) - \$7 per person

Hours of Operations:

Thursday - Saturday, 10:00 a.m. - 5:00 p.m.

Closed Sunday, New Year's Day, Thanksgiving and Christmas

Motorcoach Parking:

Yes, but no electrical hook ups

Special Group Offerings:

The "collection," is the term used to describe all of the items that are collected and preserved that have some historical significance for the state of Oklahoma. Several items are circulated into and out of the various exhibits, periodically. However, there are some items that are so rare or so fragile that they are never put out on exhibit. As a special treat for our tour groups, a curator will pull several items out of the collection for a private showing. Some of these items will never be seen by the public.

Another option is a living history performance. A number of staff and volunteers have gone to great lengths to replicate an individual from a particular era. This includes period dress, personal history and history of that time period. When these living historians are "in character," you will have a definite time machine experience.

Restaurant On-Site:

N/A

Website:

Okhistory.org

Contact:

Carrie Fox

Phone: 405.522.0791

E-Mail: cfox@okhistory.org



The Oklahoma Railway Museum

The Oklahoma Railway Museum, Ltd (ORM) open year-round Tuesday - Saturday from 9 a.m. to 4 p.m. and there is no admission charge to tour the grounds. 40-minute excursion trains are offered for the general public on the first and third Saturday's of each month April through August. Trains leave the historic Oakwood Depot at 9:15 a.m., 11:15 a.m., 1:15 p.m. and 3:15 p.m.

Group Tour Rates:

Groups are welcome, a donation is requested of at least \$1 per person for group tours. Groups are requested to make a reservation for a tour at least two weeks in advanced,

Hours of Operations:

Thursday - Saturday 9:00 a.m. - 5:00 p.m.

Motorcoach Parking:

Yes

Special Group Offerings:

Field Trip Tours

Merit Badge Classes

Charter train rides are available

Restaurant On-Site:

N/A

Website:

Oklahomarailwaymuseum.org/

Contact:

Anne Murray Chilton

Phone: 405.424.8222

Email: Annem@oklahomarailwaymuseum.org



REMINGTON PARK

Remington Park, Oklahoma's Premier Horse Racing Track and Casino, is located in the heart of the Oklahoma City Adventure District. Named one of Horseplayers Association of North America top 5 racetracks in North America, this sprawling 375 acres can house over 1,400 horses at a time and boasts one of the longest race seasons in the country. The casino floor is open 24 hours a day, 365 days a year. Elegant dining, exciting horse racing and thrilling casino action are just a few of the amenities provided at this entertainment complex. Groups can stop in for a quick visit to the casino or gift shop or stay for a spell and partake in one of several unique group experiences.

Special Group Offering:

Craft Brew Tastings - A local Bricktown Brewery Cicerone speaks to the group while they each try a flight of the Bricktown Brewery session flight of craft beers (local brewery).

Box Lunches – For on-site or bus to-go.

Winner's Circle Presentation - Take your group on a trip to the Winners Circle to present the trophy horse blanket to the winner of a race named just for them in the race program. An 8x10 glossy photo is included.

Bet Team - Learn how to pick the ponies with a private seminar from a Bet Team member. You'll feel like an expert in no time.

Building & Stable Tours - limited times available. (these four-legged athletes have nap time)

Performance Venue - There are 117 live race nights available for National Anthem performances. Your performance is broadcast over closed-circuit television to several different countries in over 1,200 racing and simulcast outlets.

Souvenirs - Complimentary promotional and instructional DVDs are provided to Tour Operators before the trip and souvenirs await your guests upon departure.

Group Tour Rates:

Free to public

Group Dining Rates for groups of 20+

Motorcoach Parking:

Free

Restaurant On-Site:

Silks (five-tiered restaurant); Bricktown Brewery at Remington Park; Henry Hudsons Pub at Remington Park; various concessions and private dining rooms.

Hours of Operations:

Casino: Open 24/7

Contact for full racing calendar and special race dates/times

Website:

Remingtonpark.com

Contact:

Christy McCormack

Phone: (405) 425-3270

E-Mail: christy.mccormack@remingtonpark.com



RIDE OKC

Ride OKC Bike Tours and Rentals offers the ultimate immersive guided tour of downtown Oklahoma City and its surrounding districts. Most people have no idea how cool Oklahoma City is. With knowledgeable local tour guides equipped with a fleet of comfortable and easy to ride bicycles, Ride OKC helps people connect with the city on a deeper level.

The Art and Architecture Tour highlights Oklahoma history and over 22 notable sites such as the Land Run Monument, the National Memorial and the Olympic Training Site. The Bikes and Brews Tour highlights four craft breweries and includes a taster size beer at each location, an exclusive behind the scenes tour of the brewing process, plus 7 notable sites. Both rides are leisurely and set at a relaxed pace with frequent stops for photo opportunities. You'll find Ride OKC Bike Tours and Rentals located downtown in the City Center, on the west side of the Myriad Botanical Gardens.

Group Tour Rates:

Minimum 8, Maximum 35

Art and Architecture Tour: \$40 pp

Children 5 & Under: Free

Bikes and Brews Tour: \$60 pp

Hours of Operations:

Tuesday – Sunday 9 - 5 PM

We are happy to work with your group outside of normal operating hours, please contact us for more information.

Advanced Reservations Required

Motorcoach Parking:

N/A

Special Group Offering:

Behind the Scenes Tour and Tasting at a local Craft Brewery. Special arrangements can be made for a behind the Scenes Tour of the Overholser Mansion. Walking Tours and Step on Guide Service with expert knowledge on Architecture, Public Art and Craft Beer also available.

Restaurant On-site:

N/A but food delivery available upon request.

Website:

Rideokc.com

Contact:

Ryan Fogle

Phone: 405.309.9696

Email: Ryan@rideokc.com



RIVER CRUISES

Navigate the beautiful Oklahoma River aboard an Oklahoma River Cruise. Cruises depart daily April - November, a one leg trip lasts approximately 45 minutes. Oklahoma River Cruises is a fun and exciting family-friendly adventure. Get on board and you'll experience exceptional service and beautiful views of Oklahoma City. A limited number of walk up tickets are available at each boarding area. View the ferry schedule on www.okrivercruises.com. Boarding may occur at either Regatta Park (701 S Lincoln Blvd.), Bricktown Landing (334 Centennial Drive), Meridian Landing (SW 15 & Meridian) or Exchange Landing (1503 Exchange). Always check the online schedule for the most up-to-date boarding location and times. April - November (Wed - Sun) Boarding is 10 mins. prior to departure.

Group Tour Rates:

\$50 off for Tour Operators & Group Tour Planners – (i.e. \$475 for 1.5 hr charter)

Tour Operators and Group Tour Planners – Oklahoma River Cruises would like to offer a discount of \$50 off Group Tours booked Sunday through Thursday.

- Seating from 24-35 depending on season
- Departure from landings other than Exchange will be subject to a remote landing fee of \$50.
- Cash NA Beverage station has no set up fee. \$50 set-up fee for all alcoholic bar services.
- No food allowed on group tours with discounts.
- Merchandise for sale onboard.
- Multiple departures with single boat receive \$50 off full booking.

Hours of Operations:

Varies throughout the year

Motorcoach Parking:

Yes

Special Group Offerings:

Private Charter Discount Sunday-Thursday

Restaurant On-Site:

N/A

Website:

Okrivercruises.com

Contact:

Che' Loessberg

Phone: 405.702.7755

Email: Cheylinloessberg@cityexperiences.com



SCIENCE MUSEUM OKLAHOMA

Science Museum Oklahoma, the state's premier destination for family fun, houses more than eight acres of hands-on science experiences with thousands of space, aviation and cultural artifacts in the mix. From traveling beyond the Milky Way in the Kirkpatrick Planetarium and the explosive fun of live science shows to discovering where the familiar meets the fantastical in CurioCity, the museum allows your inner-child to run wild.

Group Tour Rates:

Group Rates: There is a 15-person minimum for group rates during regular museum hours and a 100-person minimum after regular museum hours. Group rates range from \$11.95 to \$13.95 per person during regular museum hours and \$20 per person after regular museum hours. Group rates are available only when booked in advance, are subject to change and may vary based on package choices – please visit our website for the most up-to-date information.

School Rates: All-inclusive school group rates are \$7 per person with a minimum of 10 students. Science Overnights, which include a private overnight stay in the museum with special activities, begin at \$45 per student and \$25 per chaperone. A variety of themes and activities — including wizarding, galaxies far, far away, whodunnits and beyond — are available.

Hours of Operations:

Monday - Friday: 10:00 a.m. - 5:00 p.m.

Saturday: 10:00 a.m. - 6:00 p.m.

Sunday: 11:00 a.m. - 6:00 p.m.

After-hours events available when booked in advance.

Motorcoach Parking:

Yes

Special Group Offerings:

Boutique experiences are available based on your group's interests. Options include the museum's gardens, art galleries, tinkering spaces and hands-on science demonstrations.

Restaurant On-Site:

On-site café, lunchroom and private room seating available when booked in advance. Seating capacity up to 575 during regular hours, boxed lunches and catering options available when booked in advance. Salt & Surrey Catering provides SMO's exclusive, award-winning catering. Catering menus feature hand-selected, inspired dishes created by experienced chefs. Salt & Surrey Catering offers an array of options for buffets, plated meals, hors d'oeuvres, chef carving stations, kids' meals, snacks, desserts and more. They will also customize any menu to meet dietary needs.

Website:

ScienceMuseumOK.org

Contact:

Event Sales **Phone:** 405.602.3684 **Email:** events@sciencemuseumok.org



SKELETONS: MUSEUM OF OSTEOLOGY

At SKELETONS: Museum of Osteology you can interact and learn about animals in a unique way. With over 350 skulls and skeletons you can discover animals from every corner of the world without leaving Oklahoma City. Our hands-on museum will provide a one-of-a-kind experience that will leave you with a new perspective on nature and its wonderful creatures.

Admission Prices:

Adults 13 + up: \$10

Children 3 - 12: \$8

Group: Please call for group rates.

Prices do not include tax.

Hours of Operations:

Monday - Friday: 8:00 a.m. - 5:00 p.m.

Saturday: 11:00 a.m. - 5:00 p.m.

Sunday: 1:00 p.m. - 5:00 p.m.

Motorcoach Parking:

Yes

Special Group Offerings:

The museum is able to accommodate special interests classes upon request.

Restaurant On-Site:

N/A

Website:

Skeletonmuseum.com

Contact:

Mary Holman, Education Assistant

Phone: (405) 814-0006 ext. 123