

VISITOMAHA™

SPORTS FACILITIES GUIDE

VisitOmaha.com





A PREMIER MIDWEST SPORTS DESTINATION

Like you, we love the thrill of the game. From the best college baseball in the country and NCAA Division I play to BMX tournaments and high school national championships, Omaha is a city known for hosting sporting events with Olympic-level zest and expertise.

Omaha is a player with depth. The city is centrally located, making travel easy. Omaha has a strong volunteer base, and sporting events enjoy support from the local community. Top notch venues (and more to come) help make every event successful. Plus, more than \$9 billion in new development is reshaping Omaha and the sports attendee experience; of that investment, \$80 million will fund the expansion and improvement of area sports complexes.

Home to the NCAA Men's College World Series since 1950, Omaha is a bucket-list destination for sports fans of every variety. Olympic coaches and swimmers praise Omaha, saying the "convenience factor is unparalleled" and that the city makes athletes and fans "feel welcome and important." Omaha's resume is packed with impressive sporting events, including:

- U.S. Olympic Team Trials for Swimming and Curling
- Triple Crown SlumpBuster® youth baseball tournament
- USA Triathlon Multisport National Championships Festival
- NCAA Division I Women's Volleyball Championship
- Federation Equestrian International World Cup Finals
- USA BMX MidAmerica Nationals

Visit Omaha provides a unified team approach to events, making it simpler for event planners to do their jobs. Flip through to learn more about Omaha's sports chops and head to VisitOmaha.com to learn even more about the city.

POPULATION JUST OVER
1 MILLION

TOTAL HOTEL ROOMS
15,000+

\$9+ BILLION
IN NEW DEVELOPMENT

NON-STOP SERVICE
**30+ MAJOR
AIRPORTS**

90+
DOWNTOWN
RESTAURANTS

18,300
SEAT ARENA

420,000 SQ. FT.
CONVENTION CENTER

HOME TO THE NCAA MEN'S
COLLEGE WORLD SERIES
SINCE 1950

4 MILES
FROM AIRPORT TO
DOWNTOWN
CONVENTION DISTRICT

3,600
DOWNTOWN
HOTEL ROOMS

STREETCAR
COMING IN
2028



MEET VISIT OMAHA



Mark Rath

Regional Director of Sports at Visit Omaha

Mark Rath is Omaha's sports event expert with more than 25 years of management experience in hospitality sales and tourism marketing.

Mark's proven success in hosting multi-venue sporting events helps him appreciate the importance of building solid community partnerships.

He understands how to enhance key relationships with major rights holders, and he effectively works with city government officials and community leaders to produce a variety of successful sporting events.

Mark Rath, STS

mrath@visitomaha.com

402-672-6079



Noah Huber

Sports Sales Manager at Visit Omaha

Noah Huber, a lifelong sports enthusiast, was a student athlete at South Dakota State University and holds a Master's in Sports Leadership and Administration. Noah will receive his Sports Tourism Strategist (STS) certification this year.

Noah thrives on the fast-paced nature of securing sports business. Seeing the impact sports events have on the local community is his biggest motivator for success.

Noah Huber

nhuber@visitomaha.com

402-444-3811

SPORTS PORTFOLIO:

- Adidas 3SSB & Gold Circuit
- ASICS President's Day Classic
- International Wheelchair Softball World Series
- Levi Carter Park Activity & Sports Complex Development Project
- National Veterans Wheelchair Games
- National Veterans Golden Age Games
- NCAA Division I Men's Basketball 1st/2nd Rounds & Regionals
- NCAA Division I Men's College World Series
- NCAA Division I Women's Volleyball Championship
- NCAA Division I Wrestling Championships
- Nike Heartland MLK Classic
- NXTPRO Hoops NXT Finals
- Triple Crown's Slump Buster Tournament
- U.S. Figure Skating Championships
- U.S. Olympic Swim Trials
- U.S. Olympic Curling Trials
- USA Hockey High School National Championships
- USA Triathlon Multisport National Championships Festival
- USATF National Junior Olympic Track & Field Championships

TRANSPORTATION

GETTING AROUND OMAHA

Omaha city streets are on a grid system and are very easy to navigate. Dodge Street divides the city between north and south, and numbered streets start at the Missouri River and increase as you travel west.

Taxis, zTrip, Ubers and Lyfts are available. Many Omaha hotels offer complimentary direct shuttle service to and from the airport.

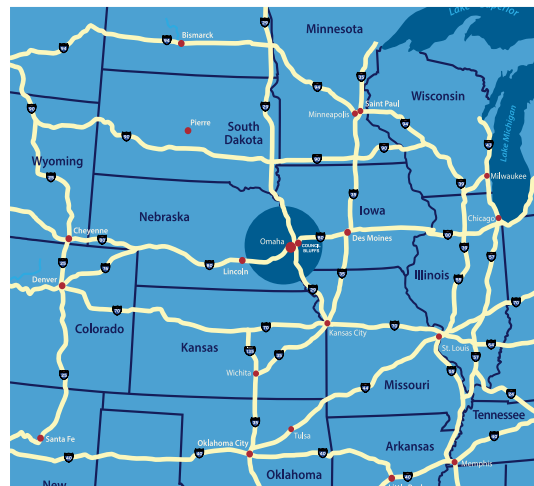
OMA – OMAHA'S AIRPORT

Omaha's airport serves 5 million passengers annually and offers non-stop service to more than 30 major airports. Getting in and out of the airport is quick and easy. The airport is less than 4 miles from downtown. By car, it takes less than 10 minutes to arrive at the city's hub. If you're departing from OMA, arrive two hours before departure. Food service is available beyond the checkpoints. More improvements are on the horizon – the airport is undergoing a \$1 billion expansion with a projected 2028 completion.



Travel to Omaha

Des Moines	135 mi
Kansas City	184 mi
Wichita	302 mi
Minneapolis	385 mi
St. Louis	425 mi
Chicago	480 mi
Oklahoma City	500 mi
Milwaukee	507 mi
Denver	551 mi



Downtown Street Car Coming in 2028

INDOOR FACILITIES



CHI HEALTH CENTER OMAHA

455 N 10th St | Omaha, NE 68102 | (402) 341-1500 | chihealthcenteromaha.com



CHI Health Center Omaha is the city's convention center and arena. The venue offers 420,000 sq. ft. of possibilities, including an 18,300-seat arena, near the riverfront. It's minutes from the airport and over 3,600 hotel rooms, with 900 across the street.

VENUE OVERVIEW

- Managed by Metropolitan Entertainment & Convention Authority
- Located in the heart of downtown Omaha parallel to the Missouri River
- Connected via skywalk to Hilton Omaha, a 600-room hotel with meeting space
- Features multiple large spaces ranging from 9,702 sq. ft. to 194,300 sq. ft.
- In-house electrical and Wi-Fi services available
- Ticketing service for all public events provided by Ticketmaster

FACILITY SNAPSHOT

- Proud host of the 2024 NCAA Men's Basketball Tournament 1st & 2nd Rounds and four-time host of U.S. Olympic Team Trials – Swimming
- Home of Creighton University men's basketball and Omaha Supernovas professional volleyball teams
- Offers a variety of events including professional and collegiate sports, concerts, family shows, and corporate functions
- Undergoing \$200 million addition and expansion that will bring total space to 420,000 sq. ft. and 41 meeting rooms in 2027.

PARKING

- 4,400+ parking spaces on-site
- More parking available in nearby parking garages and the Old Market Entertainment District



SPECIAL FEATURES/TECHNICAL

- LED ribbon board
- Center-hung video display
- Broadcast hook-ups
- Public address system

SEATING CAPACITY

- Center Stage: 18,975
- Basketball: 18,320
- Fixed Seats: 17,560
- End Stage: 15,000
- Half-house: 10,000
- Club Seats: 1,200
- Private Suites: 32

AVAILABLE SPACES

- Arena Floor: 29,400 sq. ft. with all portable staging and removable seating removed
- Locker Rooms: 5
- Dressing Rooms: 5
- Production Offices: 2
- Media Rooms: 2

LOADING/SERVICE AREA

- 5 overhead doors
(3 - 8'w x 10'h; 2 - 14'w x 16'h)
- 3 docks with levelers
- Drive-up ramp to marshaling area and arena floor

CONVENTION CENTER EXHIBITION LEVEL

- Hosts annual events such as ASICS Presidents' Day Classic volleyball tournament and Midwest Basketball Showcase
- 194,300 sq. ft. of exhibit space
- 36,900 sq. ft. of pre-function space outside of exhibit halls
- Space can be divided into individual or combined halls depending on space needed
- 23 loading docks with 4 load levelers
- 3 overhead doors
(1 - 20'w x 16'h, 2 - 12'w x 16'h)
- 30 ft. ceiling height

CONVENTION CENTER MEETING ROOM LEVEL

- Up to 63,926 sq. ft. of ballroom and event space
- 30,996 sq. ft. Peter Kiewit Grand Ballroom that can be divided 7 ways
- 10,880 sq. ft. Junior Ballroom that can be divided 4 ways
- Up to 41 additional spaces
- 29,200 sq. ft. of pre function space
- 9,000 sq. ft. outdoor terrace
- Expansive floor-to ceiling windows showcasing downtown Omaha and the Missouri River



CHI HEALTH CENTER OMAHA

455 N 10th St | Omaha, NE 68102 | (402) 341-1500

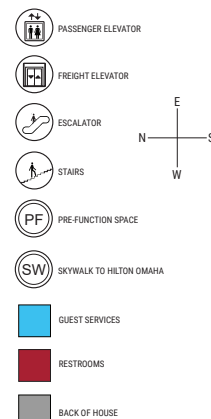
COMING IN FALL 2027: 25 MORE MEETING ROOMS

Expansion to bring convention center to 41 total meeting rooms, added square footage and exciting activation opportunities!

**Blue outline indicates additional space post expansion*



LEGEND



Following its highly anticipated expansion, the CHI Health Center Omaha convention center will offer an impressive 420,000 square feet of flexible space, including more than 100,000 square feet of state-of-the-art meeting space on the second level. This level is conveniently connected via skywalk to the 600-room Hilton Omaha, creating the perfect pairing for large events. Each room is thoughtfully designed with multiple electrical outlets, microphone connections, telephone and data ports to meet all your event needs. The venue also features individual programmable lighting with occupancy sensors, enhancing both functionality and energy efficiency. In addition, the expansion will introduce a total of 78,000 square feet of versatile pre-function space, offering the ideal setting for networking and social gatherings. Ambient lighting throughout this area creates a warm, inviting atmosphere that enhances the overall guest experience. With its modern, open design, the newly expanded convention center ensures effortless access to all areas, making it the perfect destination for events of any scale.

CHI HEALTH CENTER OMAHA

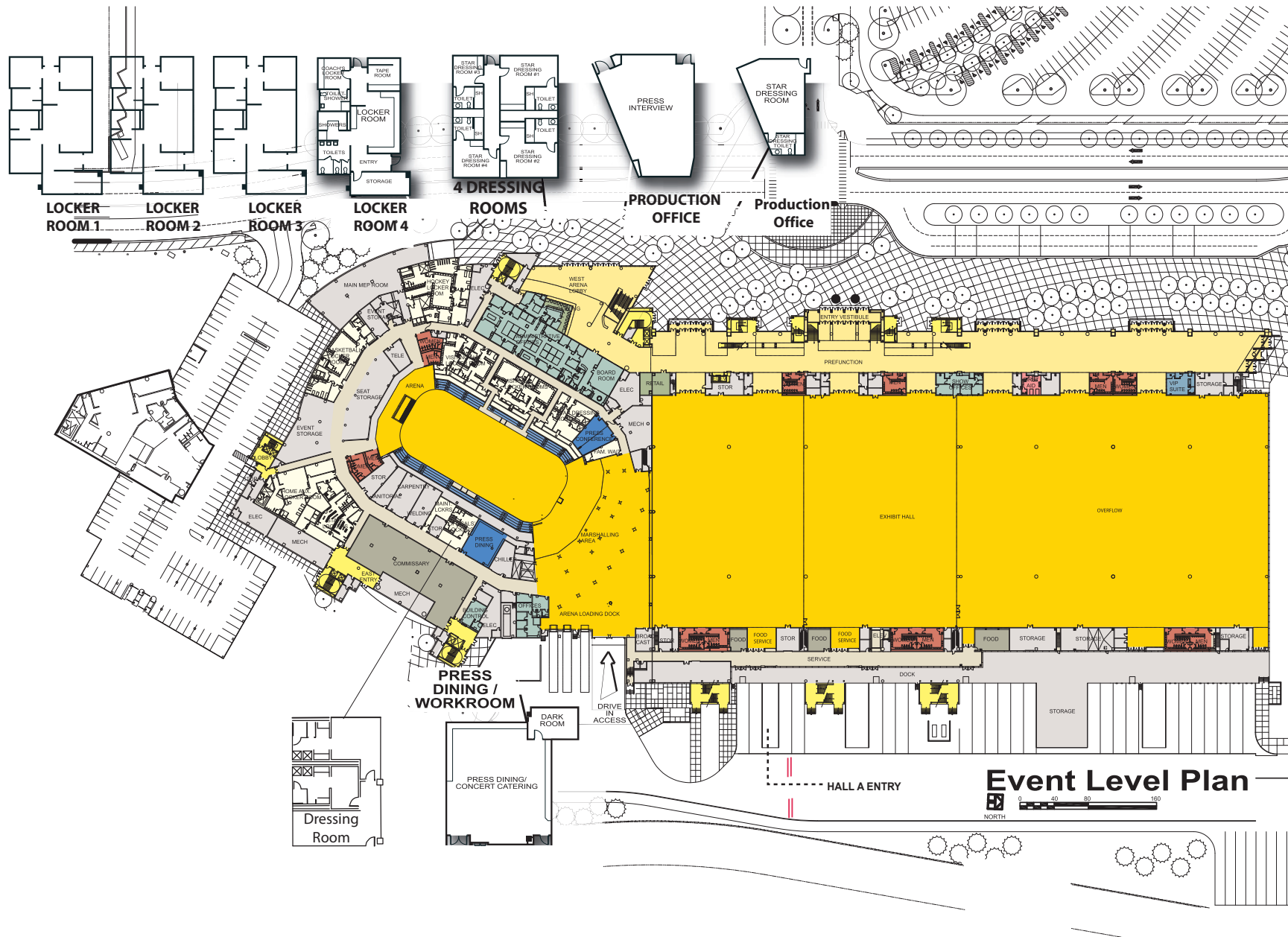
455 N 10th St | Omaha, NE 68102 | (402) 341-1500

Rooms	Dimensions	Square Feet	Ceiling Height	Banquet Rounds/ 10	Classroom	Theater
Peter Kiewit Grand Ballroom						
Grand Ballroom	246' x 126'	30,996	35'	1,470	1,768	2,563
North Ballroom	119' x 126'	14,994	35'	760	848	1,200
South Ballroom	126' x 126'	15,876	35'	830	848	1,280
Ballroom A	85' x 126'	10,710	35'	530	578	820
Ballroom B	84' x 126'	10,584	35'	530	598	820
Ballroom C	77' x 126'	9,702	35'	460	561	777
Ballroom A + B	169' x 126'	21,294	35'	1,070	1,140	1,609
Ballroom B + C	161' x 126'	20,286	35'	1,060	1,072	1,529
Meeting Rooms						
101	40' x 27'	1,080	14'	50	50	84
102 + 103	50' x 35'	1,750	14'	90	68	144
102	25' x 35'	875	14'	40	46	80
103	25' x 35'	875	14'	40	46	80
104 + 105 + 106	119' x 58'	6,902	17'	300	406	650
104 + 105	78' x 58'	4,524	17'	210	264	428
104	39' x 58'	2,262	17'	100	136	246
105 + 106	80' x 40'	4,640	17'	210	270	436
105	39' x 58'	2,262	17'	100	128	252
106	41' x 58'	2,378	17'	110	142	276
107 + 108	57' x 40'	2,280	14'	110	110	178
107	35' x 40'	1,400	14'	70	78	132
108	22' x 40'	880	14'	40	49	84
109	39' x 37'	1,443	14'	70	74	114
110	48' x 24'	1,152	14'	50	60	110
111	40' x 37'	1,480	14'	70	75	122
112 + 113	57' x 40'	2,280	14'	100	104	190
112	22' x 40'	880	14'	50	48	90
113	35' x 40'	1,400	14'	70	75	130

Rooms	Dimensions	Square Feet	Ceiling Height	Banquet Rounds/ 10	Classroom	Theater
Junior Ballroom						
Junior Ballroom	160' x 68'	10,880	20'	560	632	950
201	40' x 68'	2,720	20'	140	176	234
202	40' x 68'	2,720	20'	140	175	248
203	40' x 68'	2,720	20'	140	168	247
204	40' x 68'	2,720	20'	140	176	248
Meeting Rooms						
205 + 206 + 207	54' x 96'	5,184	20'	250	300	432
205	54' x 32'	1,728	20'	90	98	149
206	54' x 32'	1,728	20'	90	98	149
207	54' x 32'	1,728	20'	90	98	149
208 + 209	54' x 57'	3,078	20'	150	171	252
208	54' x 29'	1,566	20'	70	90	130
209	54' x 28'	1,512	20'	70	88	130
210 + 211 + 212	54' x 96'	5,184	20'	260	298	406
210	54' x 32'	1,728	20'	90	98	150
211	54' x 32'	1,728	20'	90	98	160
212	54' x 32'	1,728	20'	90	98	151
213 + 214	64' x 71'	4,544	20'	220	227	306
213	64' x 36'	2,304	20'	110	130	204
214	64' x 35'	2,240	20'	110	130	204
215 + 216	58' x 70'	4,060	20'	190	203	266
215	58' x 35'	2,030	20'	100	116	176
216	58' x 35'	2,030	20'	100	116	180
217	36' x 17'	612	14'	12	N/A	N/A
218	36' x 18'	648	14'	12	N/A	N/A
219 + 220	48' x 36'	1,728	14'	90	76	134
219	24' x 36'	864	14'	40	44	80
220	24' x 36'	864	14'	40	46	80
221 + 222 + 223	128' x 59'	7,552	17'	380	430	690
221 + 222	89' x 59'	5,251	17'	240	302	490
221	39' x 59'	2,301	17'	100	140	230
222 + 223	89' x 59'	5,251	17'	240	316	510
222	50' x 59'	2,950	17'	140	176	230
223	39' x 59'	2,301	17'	100	140	300
224	53' x 37'	1,961	17'	90	104	190
225	50' x 35'	1,750	17'	90	104	178
226	42' x 38'	1,596	17'	80	96	150
227 + 228	105' x 44'	4,620	17'	210	230	360
227	56' x 44'	2,464	17'	120	126	225
228	49' x 44'	2,156	17'	100	98	175

CHI HEALTH CENTER OMAHA

455 N 10th St | Omaha, NE 68102 | (402) 341-1500



INDOOR FACILITIES



BAXTER ARENA

2425 S 67th St | Omaha, NE 68182 | (402) 554-6200 | baxterarena.com

VENUE OVERVIEW

- Operated by University of Nebraska Omaha
- Near Aksarben Village, an entertainment district with restaurants, shopping and more
- With an emphasis on hockey, the facility offers two separate ice sheets – one in the main arena and the second as an attached practice facility

FACILITY SNAPSHOT

- Proud host of the U.S. Olympic Team Trials for Curling and USA Wrestling Girls Folkstyle Nationals
- Home of University of Nebraska Omaha men's hockey, men's & women's basketball, and women's volleyball teams
- Offers a variety of events including collegiate sports, concerts, family shows and community functions

SPECIAL FEATURES/TECHNICAL

- LED ribbon board
- Center-hung video display
- Broadcast hook-ups
- Public address system

SEATING CAPACITY

- Fixed Seats: 7,898 - more seating is available on the floor depending on event setup
- Club Seats: 750
- Private Suites: 17

AVAILABLE SPACES

- 17,000 sq. ft. floor with capability for basketball, volleyball, and ice sheets
- Community ice rink can be used as an additional ice sheet or event space
- Locker Rooms: 4
- Dressing Rooms: 2
- Media Room

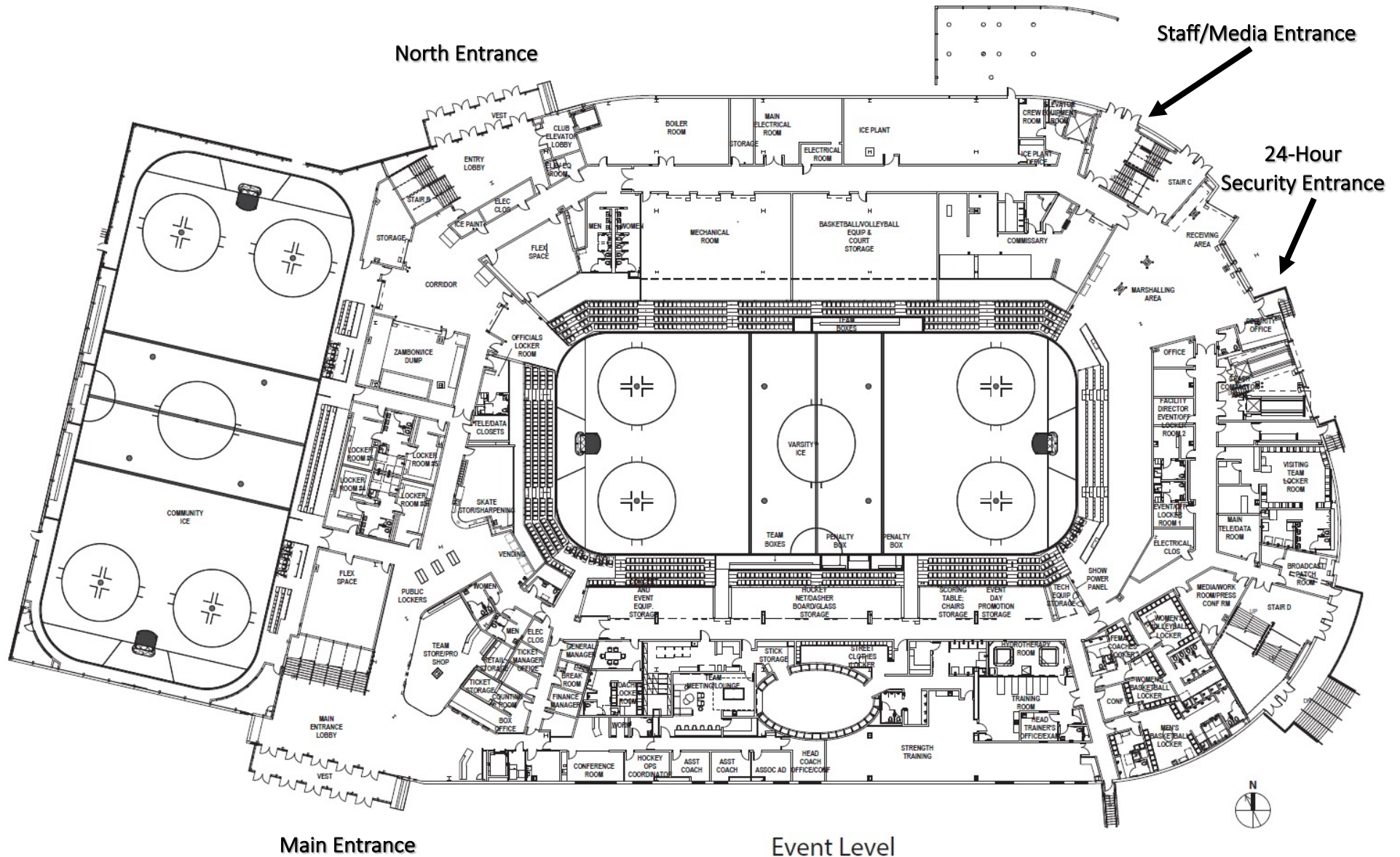
PARKING

- 2,400+ parking stalls on-site
- More parking available in Aksarben Village across the street



BAXTER ARENA

2425 S 67th St | Omaha, NE 68182 | (402) 554-6200



INDOOR FACILITIES



LIBERTY FIRST CREDIT UNION ARENA

7300 Q St | Ralston, NE 68127 | (402) 934-9966 | libertyfirstcreditunionarena.com

FACILITY SNAPSHOT

- Accommodates a variety of events including professional sports, concerts, family shows and community functions
- Proud host of the Curling World Cup and FIVB Volleyball World Grand Prix
- Home of Omaha Lancers hockey, Omaha Beef football and League One Volleyball (LOVB) teams

SPECIAL FEATURES/TECHNICAL

- LED ribbon board along each sideline
- 2 LED full-color video display boards at each end of arena

SEATING CAPACITY

- Up to 5,100 capacity depending on setup
- Club Seats: 177
- Suites: 14

AVAILABLE SPACES

- 17,000 sq. ft. arena floor
- 7,000 sq. ft. banquet space
- Attached community ice rink
- Locker Rooms: 7

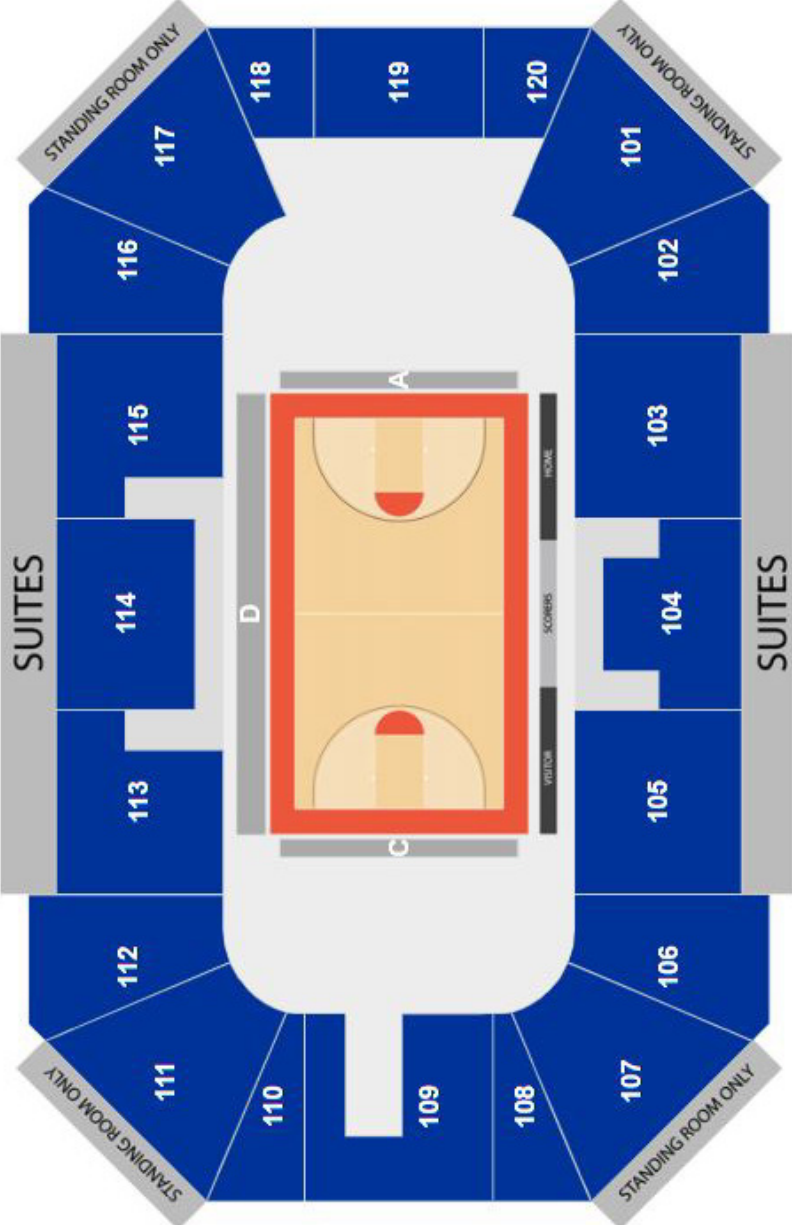
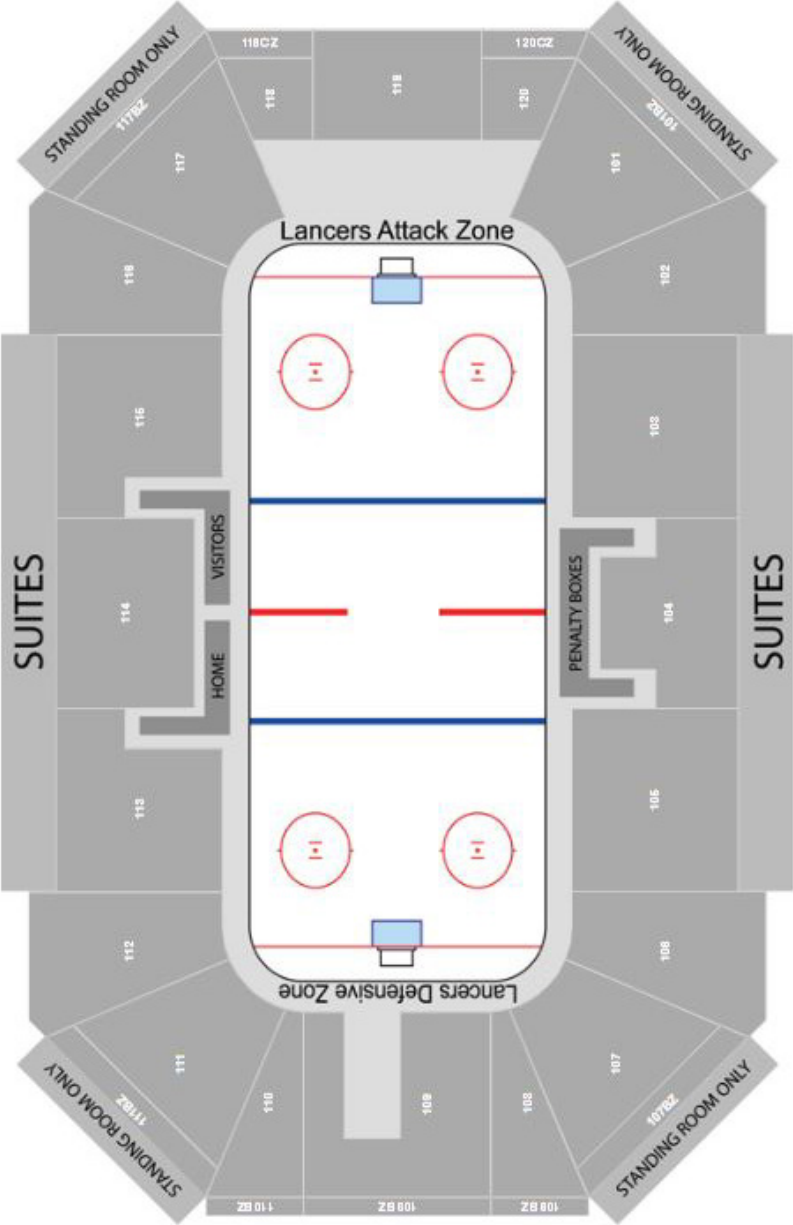
PARKING

- 1,200+ parking spots on-site



LIBERTY FIRST CREDIT UNION ARENA

7300 Q St | Ralston, NE 68127 | (402) 934-9966



INDOOR FACILITIES



UNION BANK & TRUST SPORTS COMPLEX

21015 Cumberland Dr | Elkhorn, NE 68022 | (402) 504-1222 | ubtsportscomplex.com

SPECIAL FEATURES/TECHNICAL

- HD digital Scorevision scoreboards at each court
- TVs throughout the facility can be controlled by event organizer

SEATING CAPACITY

- Bleacher seating
- Mezzanine seating and viewing available

AVAILABLE SPACES

- 178,000 total sq. ft.
- Basketball Courts: 12
- Volleyball Courts: 8
- 5,000 sq. ft. Commons Area

PARKING

- 650+ parking spaces on-site



INDOOR FACILITIES



D.J. SOKOL ARENA

701 Florence Blvd | Omaha, NE 68102 | (402) 280-2700 | gocreighton.com/facilities

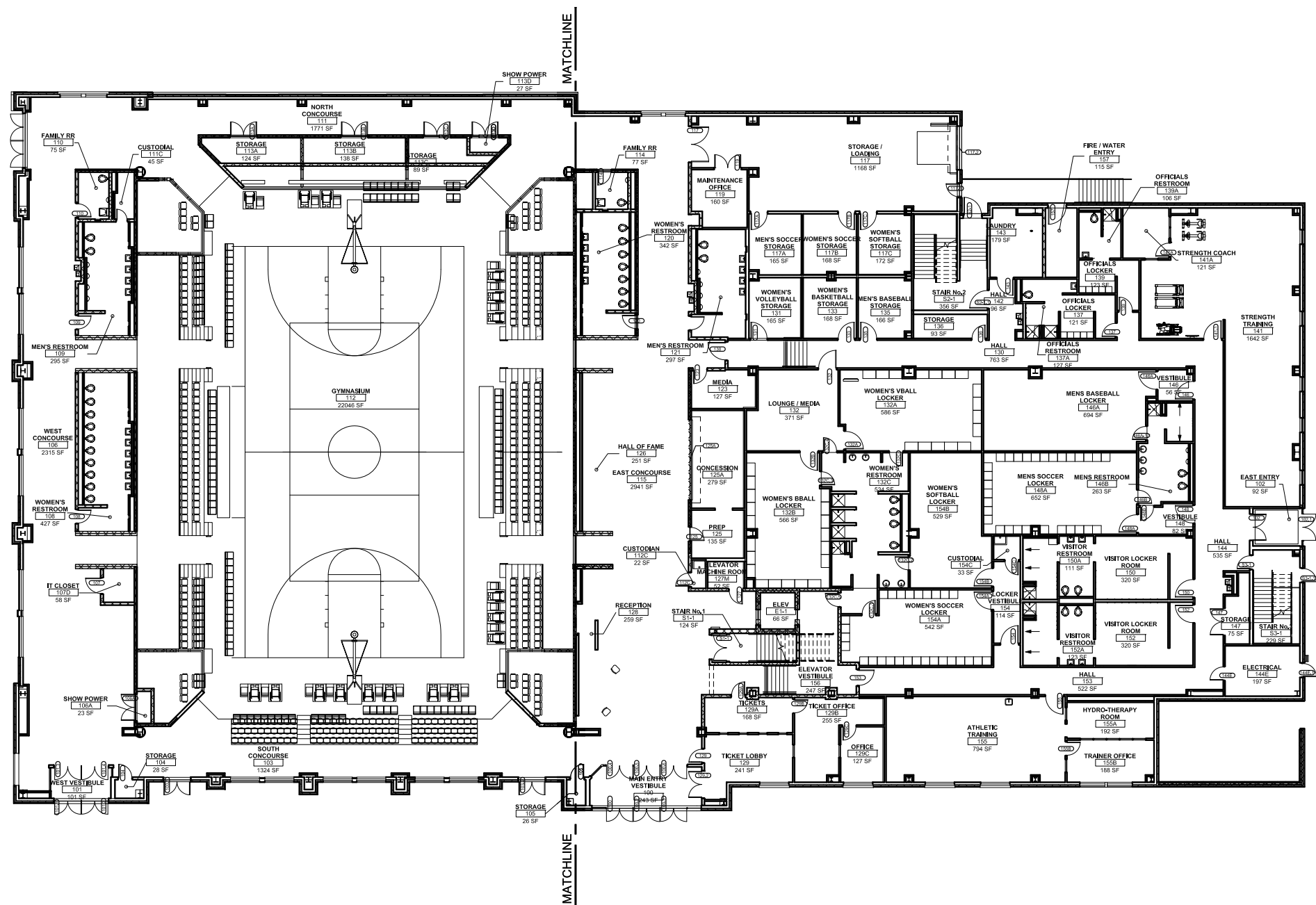
FACILITY DETAILS

- 78,000 sq. ft. facility that houses a gym with a 2,500 capacity
- Proud host of TBT - The Basketball Tournament and NCAA Women's Volleyball Championship 1st & 2nd Rounds
- Home of Creighton University women's basketball and volleyball teams
- The attached Ryan Athletic Center houses athletic training facilities, locker rooms, meeting rooms and media workrooms



D.J. SOKOL ARENA

701 Florence Blvd | Omaha, NE 68102 | (402) 280-2700



INDOOR FACILITIES



LIED FITNESS CENTER FIELDHOUSE

7000 S 72nd St | Omaha, NE 68124 | (402) 399-2400 | csmflames.com/athletic_facilities

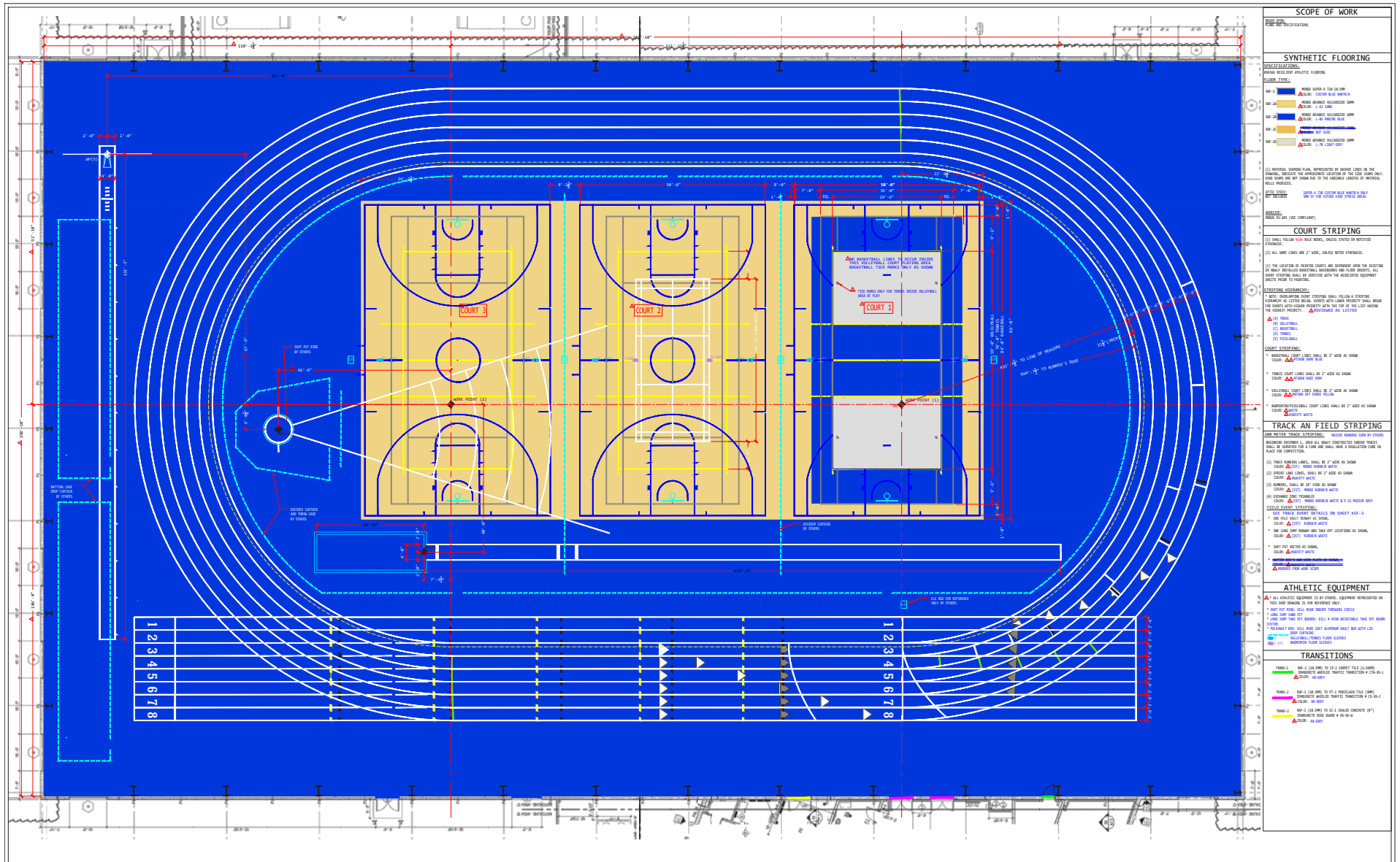
FACILITY DETAILS

- Newly opened indoor track and field facility on the campus of College of Saint Mary
- Home to the College of St. Mary Flames
- 75,000 sq. ft. facility capable of holding collegiate-level indoor track and field events
- 200-meter track circling basketball and volleyball courts



LIED FITNESS CENTER FIELDHOUSE

7000 S 72nd St | Omaha, NE 68127 | (402) 399-2400



INDOOR FACILITIES



LEVI CARTER PARK

809 Carter Lake Shore Dr | Omaha, NE 68110 | (402) 444-4674 | parks.cityofomaha.org/levi-carter-park-activity-sports-complex

FACILITY DETAILS

- Located north of downtown Omaha near Omaha's airport (OMA)
- Total park size is approximately 520 acres
- Existing amenities include a lake, pavilion, playground, spray ground, basketball courts, volleyball courts and green space

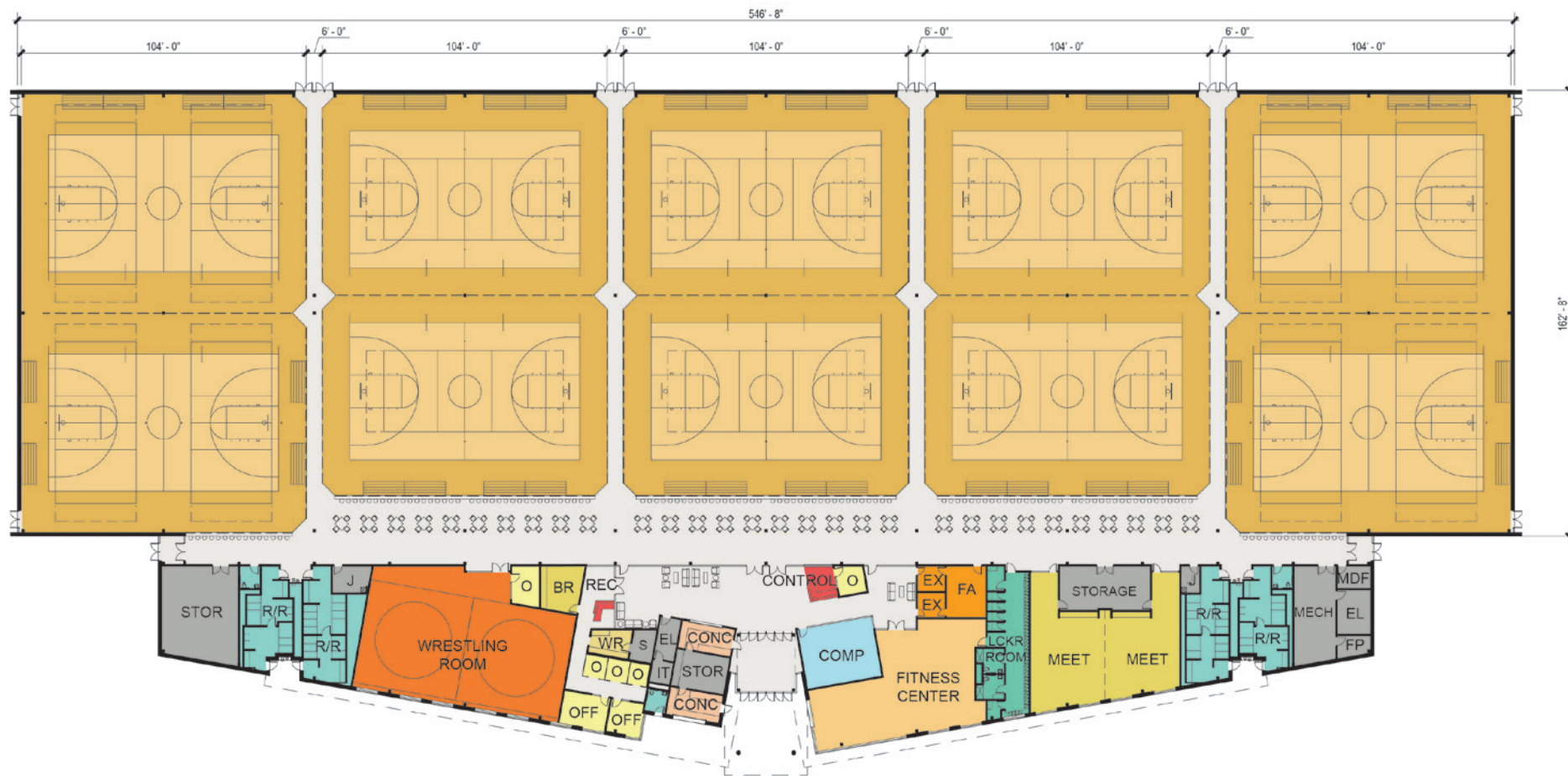
IN DEVELOPMENT ACTIVITY & SPORTS COMPLEX

- New 100,000 square-foot center within the park has a projected completion date of Fall 2026
- Planned indoor areas for the facility include:
 - 10 Basketball Courts
 - 14 Volleyball Courts
 - Wrestling room
 - Weight training/fitness room
 - Computer labs
 - Health screening space
 - Dedicated technology-enabled classroom
- Planned outdoor areas for facility include:
 - 4 full-size (70yd x 120yd) synthetic turf soccer fields
 - Concessions
 - Surface parking



LEVI CARTER PARK

4405 Carter Lake Shore Dr | Omaha, NE 68110 | (402) 444-4674



OUTDOOR FACILITIES



CHARLES SCHWAB FIELD OMAHA

1200 Mike Fahey St | Omaha, NE 68102 | (402) 546-1800 | charlesschwabfieldomaha.com

FACILITY DETAILS

- Home of the NCAA Men's College World Series and the Creighton University men's baseball team
- Multi-use, year-round stadium with sports, concerts and ice events
- Large video scoreboard in outfield
- Auxiliary Meeting Rooms: 6

CLUBHOUSES

- 2 clubhouses - one on the 1st base side and one on the 3rd base side
- Each locker room has 37 lockers, restrooms and separate locker room space for coaches and meetings
- Athletic training facilities located in the 1st and 3rd base clubhouses
- 2 additional holding rooms that can accommodate 35 people; no lockers

SEATING CAPACITY

- 24,000-additional on-field seating available for events
- Club Seats: 2,500

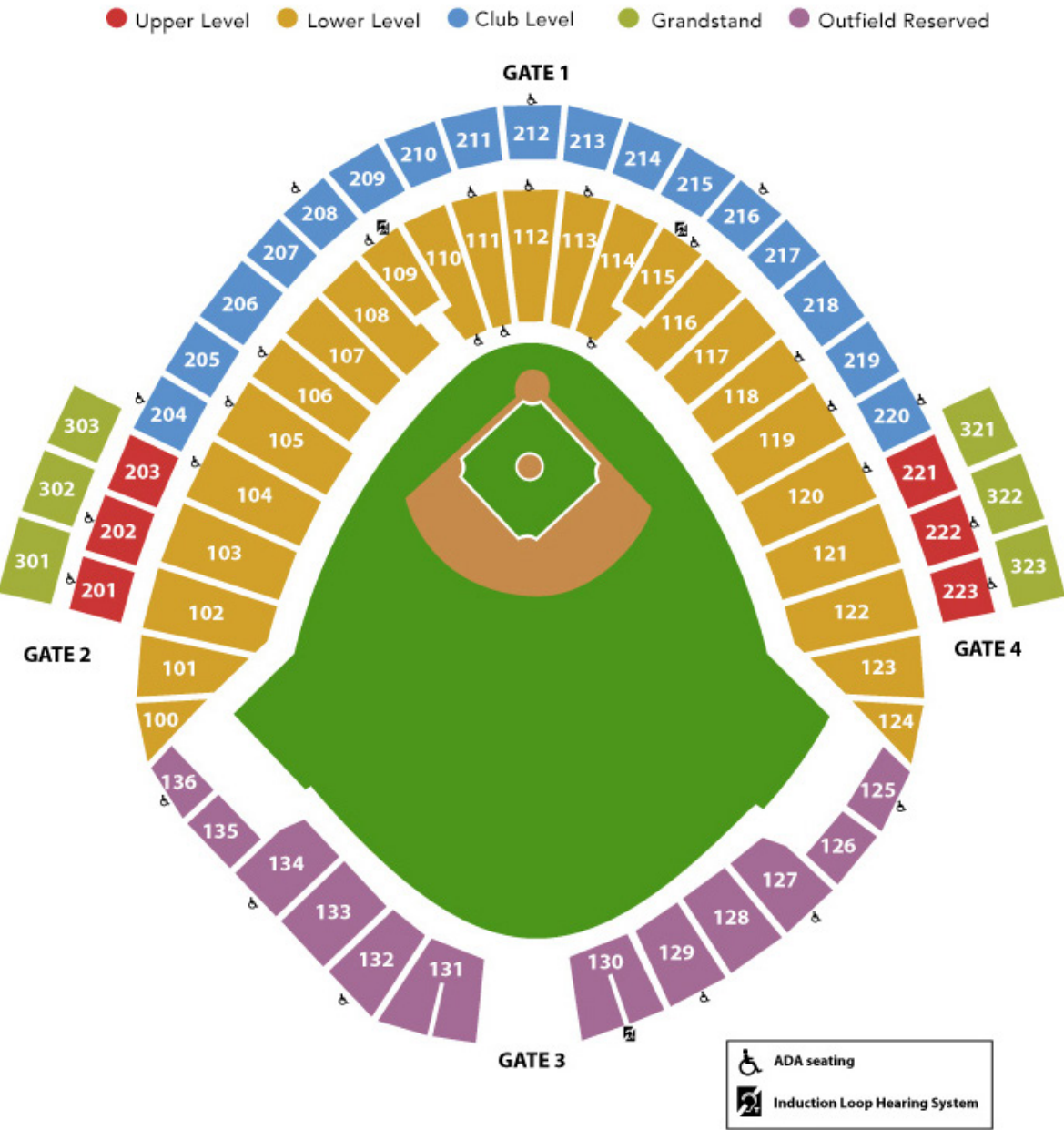
PARKING

- 4,000+ parking stalls on-site



CHARLES SCHWAB FIELD OMAHA

1200 Mike Fahey St | Omaha, NE 68102 | (402) 546-1800



OUTDOOR FACILITIES



MORRISON STADIUM

1804 California St | Omaha, NE 68102 | (402) 280-2700 | gocreighton.com/facilities/morrison-stadium/9

FACILITY DETAILS

- Home of Creighton University men's and women's soccer teams
- Nestled along the edge of downtown Omaha
- Artificial turf pitch with a first-of-its-kind Fieldturf Revolution all-weather surface
- Enclosed press box, permanent concessions and banquet area



SEATING CAPACITY

- Fixed Seats: 7,500
- Chairback Seats: 2,000
- Luxury Suites: 5



OUTDOOR FACILITIES



LAKE CUNNINGHAM

8965 State St | Omaha, NE 68122 | (531) 201-5754 | explorethec.com

LAKE DETAILS

- Recently underwent a \$23 million renovation
- Proud host of the USA Triathlon Multisport National Championships Festival in 2024 & 2025
- Located in north-central Omaha
- A 390-acre lake surrounded by 1,050-acre park
- Features a multi-purpose concrete trail (6.2 miles) and natural multi-purpose trail, with plans to connect to an existing city trail in 2025
- Additional features include 18-hole disc golf course, Dave Van Metre Court bocce ball court, archery range, equestrian trails, kayaking and paddleboarding, fishing docks, picnic shelters and RV campgrounds
- Upcoming development includes adding pickleball courts and adding a dock to the west side of the lake

LAKE DETAILS

- Average water temp 70-79°F in summer months
- Approximately 30 docks with a marina

CAMPSITE DETAILS

- 83 campsites
- Restrooms/showers available

PARKING

- Approximately 300 onsite parking spaces



OUTDOOR FACILITIES



BURKE STADIUM

12200 Burke St | Omaha, NE 68154 | (402) 557-3200

FACILITY DETAILS

- Recently underwent an \$8 million renovation including updated track and competition areas, and a new press box, restrooms, media areas and concession stands
- Proud host of the USATF National Junior Olympic Track & Field Championships, USATF National Club Track & Field Championships
- Home of Nebraska State Track & Field Meet

SEATING CAPACITY

- Stadium Seats: 8,000
- Additional seating and standing room available surrounding the track



OUTDOOR FACILITIES



OMAHA BMX AT HEFFLINGER PARK

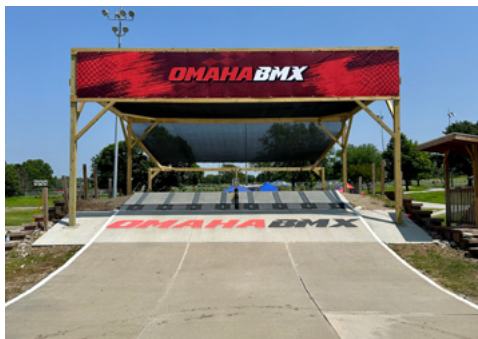
11111 W Maple Rd | Omaha, NE 68164 | (402) 444-5900 | parks.cityofomaha.org/parks/bmx-facility

FACILITY SNAPSHOT

- Underwent a comprehensive redesign in 2023
- 12 sets of bleachers; 8 sets with 5 rows and 4 sets with 10 rows
- Recently upgraded PA system
- Four sets of field lights to facilitate night races
- Permanent concession stand with lockable meeting space and spectator fencing

PARKING

- Three surface parking lots and ample grass parking



OUTDOOR FACILITIES



FIRST INTERSTATE BANK SPORTSPLEX

26001 Ida St | Valley, NE 68064 | (402) 289-8358 | firstinterstatesportsplex.com

FACILITY SNAPSHOT

- First phase completed and opened in 2023 with future development in the works
- Proud host of the 2024 International Wheelchair Softball World Series

AVAILABLE SPACES

- Full-size Soccer Fields: 6 - there are no dips in-between the fields, so fields can be used for any sport
- Baseball/Softball Diamonds: 8
- 8 additional fields slated for construction
- 1 barrier-free field

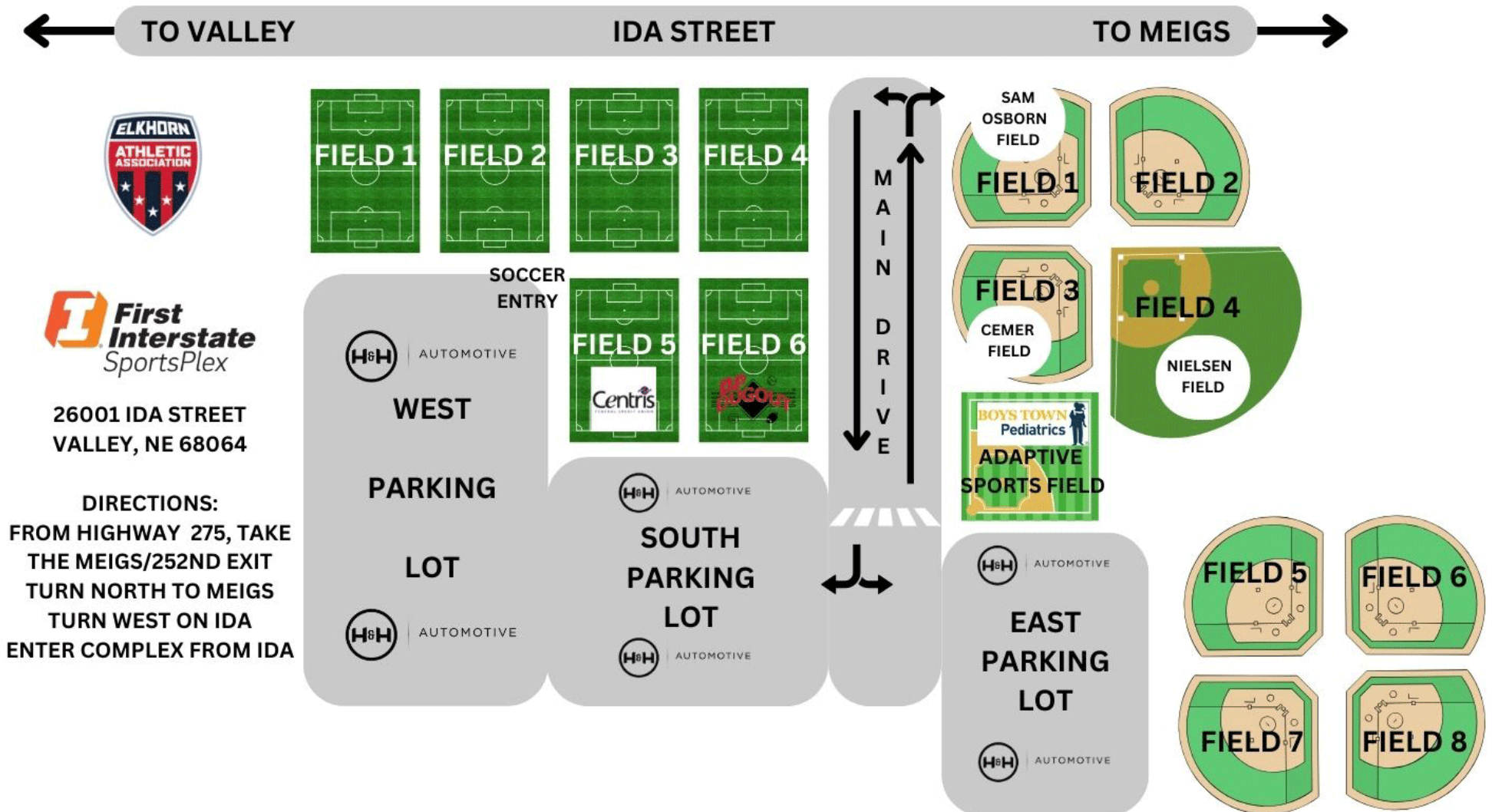
PARKING

- 1,500 paved spots



FIRST INTERSTATE BANK SPORTSPLEX

26001 Ida St | Valley, NE 68064 | (402) 289-8358



OUTDOOR FACILITIES



MAVERICK PARK

2850 South 67th Street | Omaha, NE, 68106 | (402) 554-6281 | omavs.com/facilities/tal-anderson-field/6

FACILITY DETAILS

- Opened in 2021
- Proud host of Nebraska School Activities Association State Baseball and Softball tournaments
- Home of University of Nebraska Omaha men's baseball and women's softball teams
- Houses two fields:
 - Connie Claussen Field is a collegiate softball field with 650 fixed seats, berm seating and a video board in the outfield
 - Tal Anderson Field is a collegiate baseball field with 1,500 fixed seats, berm seating and a video board in the outfield
 - Both fields have a state-of-the-art artificial surface
 - Both fields share a raised concourse with permanent concessions, restrooms, pressbox and premium seating



PARKING

- Ample parking on-site

MAVERICK PARK

2850 South 67th Street | Omaha, NE, 68106 | (402) 554-6281



OUTDOOR FACILITIES



CANIGLIA FIELD

6201 Maverick Plaza | Omaha, NE 68182 | (402) 554-2800 | omavs.com/facilities/caniglia-field/4

FACILITY DETAILS

- Renovated in 2023 and now features a brand new pitch, seating and renovated 3-level press box
- Proud host of the 2024 U.S. Open Cup between Union Omaha and Sporting Kansas City
- Home of University of Nebraska Omaha men's and women's soccer teams
- LED video board
- Lights to facilitate night games
- Only NCAA Division I field to receive the prestigious FIFA Recommended 2* certification



SEATING CAPACITY

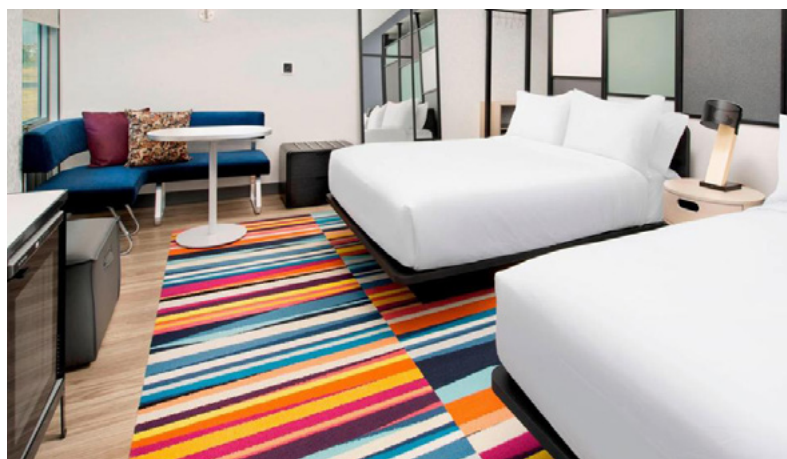
- Fixed Seats: 3,000
- Chairback Seats: 1,390

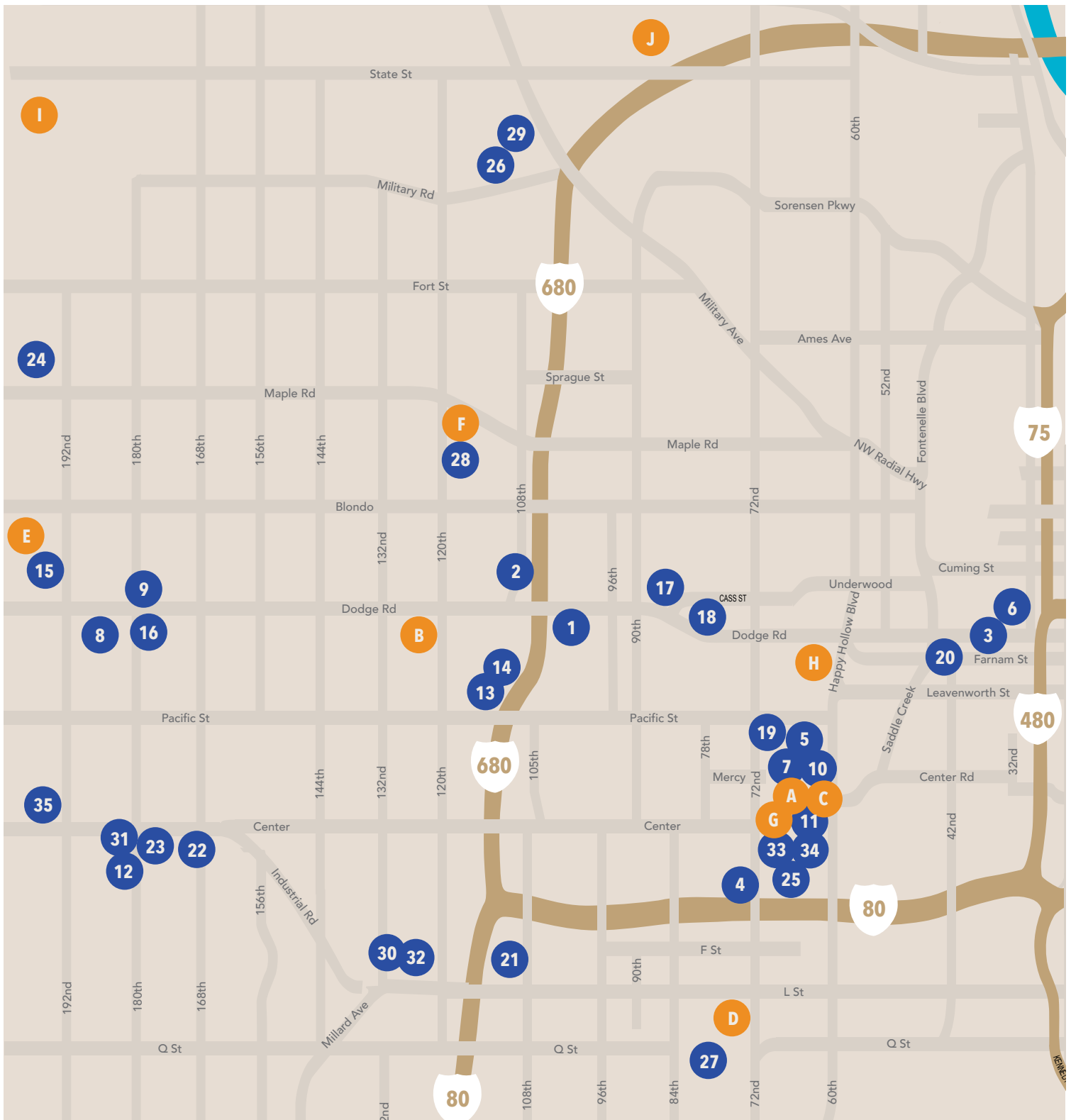


OMAHA HOTELS

With more than 15,000 hotel rooms in the Omaha area,
there are various options for your stay.

Omaha Area Hotel Name	# Sleeping Rooms	Address	Zip Code	Region
1. Omaha Marriott Regency Hotel	300	10220 Regency Cir	68114	Southwest
2. Wyndham Omaha	217	655 N 108th Ave	68154	Northwest
3. Kimpton Cottonwood Hotel	205	302 S 36th St	68131	Midtown
4. DoubleTree by Hilton Omaha Southwest	179	3650 S 72nd St	68124	Central
5. Courtyard by Marriott Aksarben Village	134	1625 S 67th St	68106	Central
6. Element Omaha Midtown Crossing	132	3253 Dodge St	68131	Midtown
7. Hilton Garden Inn Aksarben Village	131	6737 Frances St	68106	Central
8. Aloft Omaha West	120	215 S 181st St	68022	Southwest
9. Hilton Garden Inn Omaha West	119	17879 Chicago St	68118	Southwest
10. Residence Inn by Marriott Aksarben Village	118	1717 S 67th St	68106	Central
11. Aloft Omaha Aksarben Village	111	6201 Center St	68106	Central
12. Hampton Inn Lakeside	110	17606 Arbor Plz	68130	Southwest
13. Hampton Inn Omaha West Dodge/Old Mill	110	11201 Davenport St	68154	Southwest
14. TownePlace Suites by Marriott Omaha West	108	10865 W Dodge Rd	68154	Southwest
15. Residence Inn Omaha West	108	18202 Cuming St	68022	Northwest
16. HOME2 SUITES by Hilton Omaha West	105	17889 Chicago St	68118	Northwest
17. Holiday Inn Express & Suites Omaha Central	104	8736 W Dodge Rd	68114	Central
18. Staybridge Suites Omaha	102	7825 Davenport St	68114	Central
19. Hampton Inn Omaha Midtown - Aksarben Village	102	1401 S 72nd St	68124	Central
20. Home2 Suites by Hilton Omaha UN Medical Center Area	102	4440 Douglas	68131	Central
21. Best Western Plus Midwest Inn	99	4706 S 108th St	68137	Southwest
22. Staybridge Suites - Omaha West	99	2720 Oak Dr	68130	Southwest
23. Fairfield Inn & Suites Omaha West	90	17240 Wright St	68130	Southwest
24. Holiday Inn Express and Suites West Omaha-Elkhorn	90	19040 Evans St	68022	Northwest
25. Fairfield by Marriott 72nd Street	85	7002 Grover St	68124	Central
26. Holiday Inn Express and Suites Cherry Hills	84	6939 N 102nd Cir	68122	Northwest
27. Holiday Inn Express & Suites Omaha South - Ralston Arena	83	7306 Q St	68127	Central
28. Holiday Inn Express 120th & Maple	82	11818 Miami St	68164	Northwest
29. Fairfield Inn & Suites Omaha Northwest	81	7101 N 102nd Cir	68122	Northwest
30. Candlewood Suites Omaha - Millard Area	81	13003 I St	68137	Southwest
31. Holiday Inn Express Hotel & Suites - Omaha West	80	17677 Wright St	68130	Southwest
32. Holiday Inn Express and Suites Omaha - Millard Area	77	13131 I St	68137	Southwest
33. Tru I-80 by Hilton	69	7011 Hascall St	68106	Central
34. Home2 Suites I-80 by Hilton	69	7011 Hascall St	68106	Central
35. Comfort Suites West Omaha	63	2500 S 192nd Ave	68130	Southwest





Sports Facilities

- A. Lied Fitness Center and Fieldhouse
- B. Omaha Burke Stadium
- C. Baxter Arena
- D. Liberty First Credit Union Arena
- E. Union Bank & Trust Sports Complex
- F. Omaha BMX at Hefflinger Park
- G. Maverick Park
- H. Caniglia Field
- I. First Interstate Bank Sportsplex
- J. Lake Cunningham

Address

- 7000 S 72nd St
- 12200 Burke St
- 2425 S 67th St
- 7300 Q St
- 21015 Cumberland Dr
- 11111 W Maple Rd
- 2850 South 67th Street
- 6201 Maverick Plaza
- 26001 Ida St
- 8965 State St

Zip Code

- 68124
- 68154
- 68106
- 68127
- 68022
- 68164
- 68106
- 68182
- 68064
- 68122

Region

- Central
- Southwest
- Central
- Central
- Northwest
- Northwest
- Central
- Central
- Northwest
- North

DOWNTOWN HOTELS

Omaha has more than 3,600 downtown hotel rooms, all within walking distance of the city's convention district, restaurants, bars, art galleries, shopping, and entertainment hot spots.

Downtown Omaha	Hotel Name	# Sleeping Rooms	Address	Zip Code	# Meeting Rooms	Largest Room
1.	Hilton Omaha	600	1001 Cass St	68102	21	10,000
2.	DoubleTree by Hilton Omaha Downtown	414	1616 Dodge St	68102	25	9,000
3.	Omaha Marriott Downtown At The Capitol District	333	222 N 10th St	68102	9	10,275
4.	Embassy Suites Downtown/Old Market	249	555 S 10th St	68102	13	10,658
5.	Courtyard by Marriott Omaha Downtown	181	101 S 10th St	68102	3	924
6.	Hilton Garden Inn Omaha Downtown	178	1005 Dodge St	68102	3	1,200
7.	Hyatt Place Omaha Downtown Old Market	159	540 S 12th St	68102	3	1,415
8.	Residence Inn by Marriott Omaha Downtown/Old Market	152	106 S 15th St	68102	3	828
9.	Magnolia Hotel Omaha	145	1615 Howard St	68102	10	1,615
10.	Hampton Inn and Suites Omaha Downtown	139	1212 Cuming St	68102	1	847
11.	EVEN Hotel	132	2220 Farnam St	68102	5	5,000
12.	Cambria Hotel Omaha Downtown	128	740 N 14th St	68102	3	1,500
13.	Homewood Suites by Hilton Omaha Downtown	123	1314 Cuming St	68102	1	669
14.	The Farnam, Autograph Collection	120	1299 Farnam St	68102	6	5,000
15.	Holiday Inn Downtown Omaha	114	1420 Cuming St	68102	2	2,700
16.	Fairfield Inn and Suites by Marriott Omaha Downtown	113	1501 Nicholas St	68102	1	200
17.	Moxy Omaha Downtown	113	409 S 12th St	68102	0	N/A
18.	Holiday Inn Express & Suites - Old Market	100	2431 Farnam St	68131	1	800
19.	Hotel Indigo	90	1804 Dodge St	68102	2	2,000
20.	Hotel Deco	89	1504 Harney St	68102	5	2,316
21.	The Peregrine Omaha Downtown, Curio Collection by Hilton	89	203 S 18th St	68102	3	700





Sports Facilities

- A. Levi Carter Park
- B. CHI Health Center Omaha
- C. D.J. Sokol Arena
- D. Charles Schwab Field
- E. Morrison Stadium

Address

10220 Regency Cir
 655 N 108th Ave
 302 S 36th St
 3650 S 72nd St
 1625 S 67th St

Zip Code

68114
 68154
 68131
 68124
 68106

OMAHA'S DOWNTOWN CONVENTION DISTRICT



Population Just Over
1 Million



15,000+
Total Hotel Rooms



Downtown Street Car Coming in 2028

**VISIT
OMAHA™**
VisitOmaha.com

Omaha Airport (OMA)

Ranked #1 in Customer Satisfaction



Non-Stop Service
30+ Major Airports



4 miles
To Downtown Convention District

Downtown Convention District

All within walking distance to:



Omaha Convention Center
420,000 sq. ft. with an 18,300-seat attached arena



3,600 Downtown Hotel Rooms



90+ Downtown Restaurants