

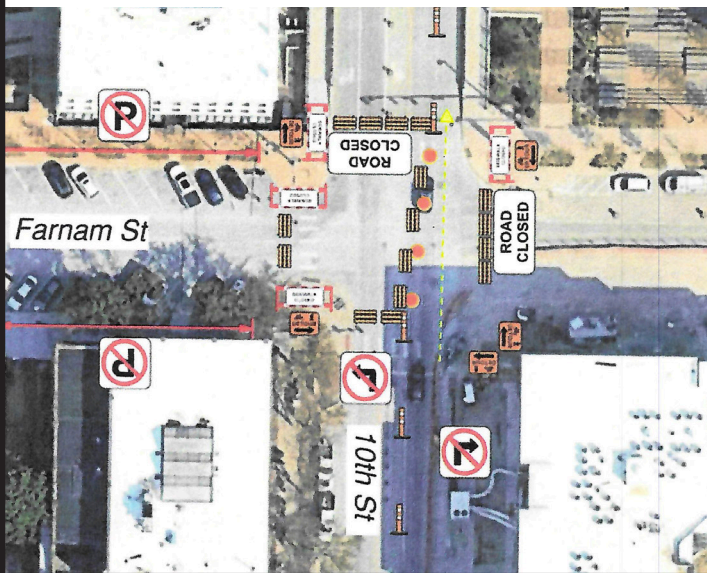
# HELPFUL TIPS FOR ACCESSING THE OMAHA VISITORS CENTER

- Sidewalks/pedestrian traffic are open on the east side of 10th St, crossing Farnam St, and heading west on Farnam St
- Parking spots outside the Omaha Visitors Center are open
- When driving north on 10th St, make a U-turn on 10th St to access the parking spots outside the Omaha Visitors Center

PLEASE  
PARDON THE  
IMPROVEMENTS

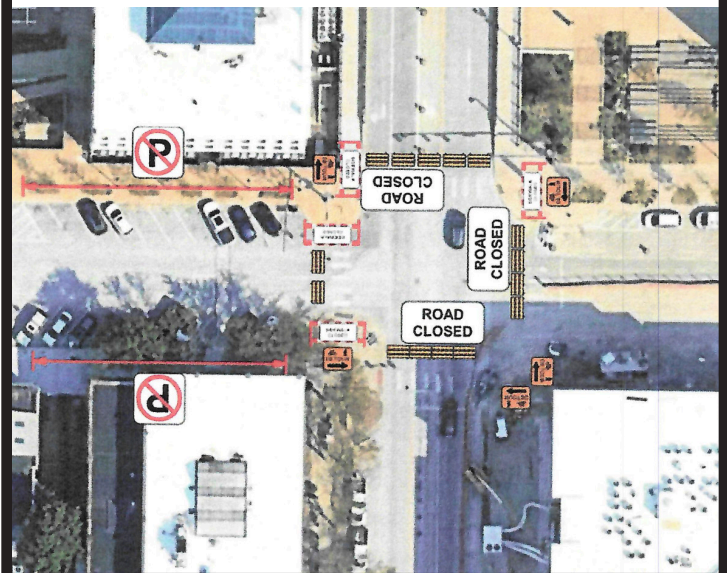
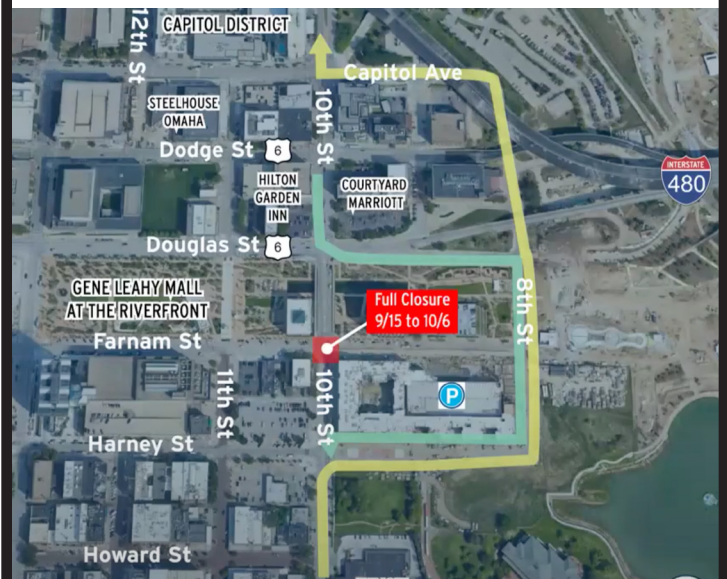
## MONDAY, SEPT 8 UNTIL MONDAY, SEPT 15

- 10th St closed aside one lane northbound
- Farnam St closed at 10th St



## MONDAY, SEPT 15 UNTIL MONDAY, OCT 6

- 10th St full closure at Farnam St
- Farnam St remains closed at 10th St



MORE INFO AT [OMAHASTREETCAR.ORG](http://OMAHASTREETCAR.ORG)