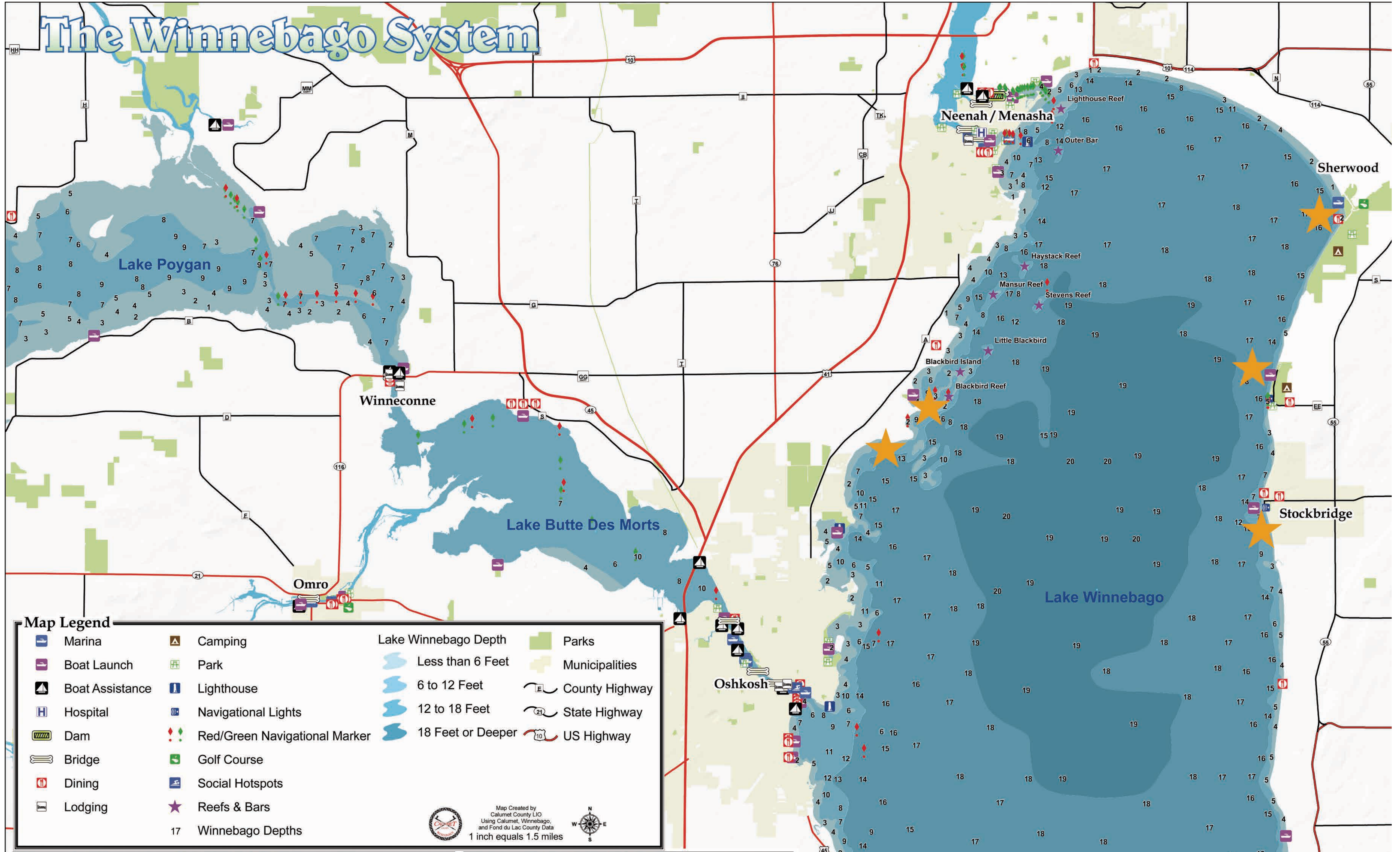


# The Winnebago System



### Map Legend

Marina	Camping	Lake Winnebago Depth	Parks
Boat Launch	Park	Less than 6 Feet	Municipalities
Boat Assistance	Lighthouse	6 to 12 Feet	County Highway
Hospital	Navigational Lights	12 to 18 Feet	State Highway
Dam	Red/Green Navigational Marker	18 Feet or Deeper	US Highway
Bridge	Golf Course		
Dining	Social Hotspots		
Lodging	Reefs & Bars		

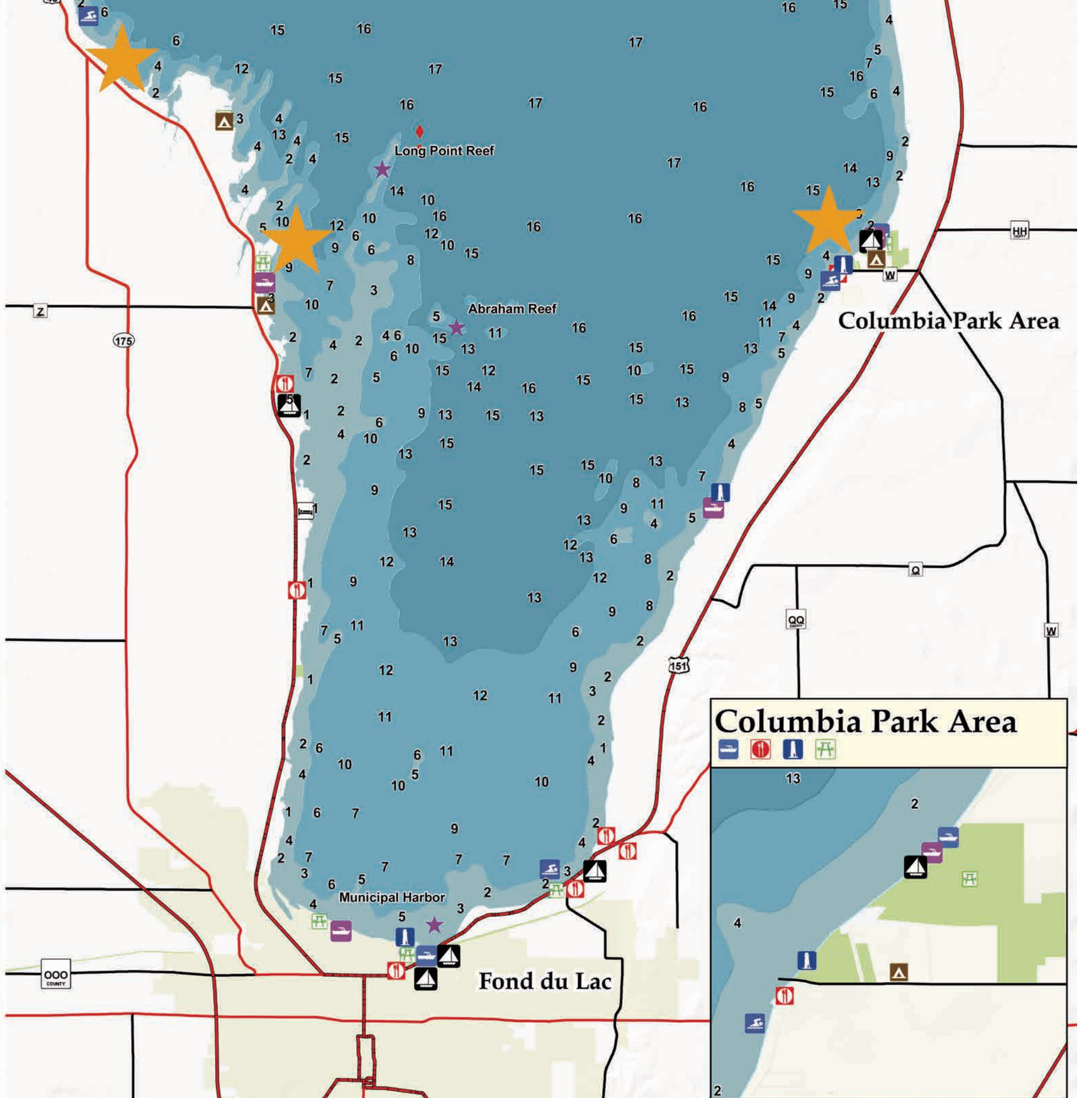
17 Winnebago Depths

Map Created by Calumet County LIG Using Calumet, Winnebago, and Fond du Lac County Data  
1 inch equals 1.5 miles



### Lake Winnebago Fish Species

Largemouth and Smallmouth Bass  
Rock, Yellow, and White Bass  
Panfish: Bluegill, Pumpkinseed, Sunfish, Crappie, and Yellow Perch  
Muskellunge  
Northern Pike  
Walleye and Sauger  
Channel Catfish  
Flathead Catfish  
Lake Sturgeon



### Gas & Service

	GPS Coordinates	Phone	Gas	Repair	Parts	Liftout	Boat Sales/Rental
High Cliff Marina (High Cliff)	44.1656 -88.2973	920-989-1349					
Calumet Harbor Marina (Fond du Lac)	43.91425 -88.33286	920-960-0187					
Lakeside Park (Fond du Lac)	43.79509 -88.43638	920-906-5096					
Fond du Lac Yacht Club (Fond du Lac)	43.79509 -88.43638	920-921-9950					
Mr. Marine (Fond du Lac)	43.7941 -88.4544	920-921-7070					
Clarence's Harbor (Fond du Lac)	43.4818 -88.2410	920-921-8349					
Wendt's Marine (Van Dyne)	43.89326 -88.46789	920-688-2601					
Pioneer Marina (Oshkosh)	44.06650 -88.53465	920-233-1981					
Bayshore Marina & Storage (Oshkosh)	44.0122 -88.5304	920-420-2992					
Sweetwater Performance Marina (Oshkosh)	44.0130 -88.53394	920-230-6438					
Lakeside Marina (Oshkosh)	44.0253 -88.5600	920-231-4321					
Hergert Sport Center (Oshkosh)	44.0324 -88.5673	920-231-8520					
Skipper Bud's Marina (Oshkosh)	44.0382 -88.5857	920-231-3200					
Ecklund Motorsports & Marina (Oshkosh)	44.0525 -88.5765	920-233-3313					
Spellman's Marina (Oshkosh)	44.03196 -88.56029	920-231-1850					
Valley Marine Mart (Menasha)	44.2016 -88.4597	920-722-6379					
Menasha Marina (Menasha)	44.19931 -88.45094	920-967-5193					
Lang's Landing (Winneconne)	44.11248 -88.71193	920-582-7501					
Wolf River House Resorts (Winneconne)	44.1166 -88.70831	920-582-4555					
Kiesow's Landing & Storage (Larsen)	44.18967 -88.78291	920-836-2590					
Seaworthy Marine (Omro)	44.03971 -88.74876	920-685-2280					

### Contacts For Fees

Calumet County	co.calumet.wi.us	920-439-1008
City of Fond du Lac	fdl.wi.gov	920-322-3400
Fond du Lac County	fdlco.wi.gov	920-929-3038
City of Menasha	cityofmenasha.wi.gov	920-967-3640
Town of Menasha	town-menasha.com	920-720-7108
City of Neenah	ci.neenah.wi.us	920-886-6060
Omro	omro-wi.com	920-685-7000
Oshkosh	ci.oshkosh.wi.us	920-236-5080
Winneconne	winneconne.wi.us	920-582-4381
Winnebago County	co.winnebago.wi.us	920-232-1960
Wisconsin State Park Admission Fee	wiparks.net	920-989-1106
Wisconsin Fishing License	dnr.wi.gov/topic/fishing	888-936-7463

### Contact Numbers

US Coast Guard Auxiliary - District 9WR	920-725-8027
Flotilla 47-1 Fond du Lac	
Flotilla 47-3 Neenah-Menasha	
Wisconsin DNR	888-936-7463
Wisconsin DNR Satellite Center, Oshkosh	
625 East County Road Y	920-424-3050
Fond du Lac Area Convention & Visitors Bureau	
171 S. Pioneer Rd., 1 fdl.com	800-937-9123
Calumet County Tourism	
206 Court Street, Chilton   TravelCalumet.com	920-849-1493 ext 263
Oshkosh Convention & Visitors Bureau	
100 North Main St., Suite #112	
visitoshkosh.com	877-303-9200

Oshkosh Convention & Visitors Bureau

For more information on Winnebago County contact:

Oshkosh Convention & Visitors Bureau  
877-303-9200  
[www.visitoshkosh.com](http://www.visitoshkosh.com)

Wisconsin's Event City

Fond du Lac Convention & Visitors Bureau

For more information on Fond du Lac County contact:

Fond du Lac Convention & Visitors Bureau  
920-923-3010  
[www.fdl.com](http://www.fdl.com)

Fond du Lac... fun without boundaries

Calumet County Resource Management

For more information on Calumet County contact:

Calumet County Resource Management  
920-849-1493 ext. 263  
[www.TravelCalumet.com](http://www.TravelCalumet.com)

Welcome to the Quiet Side of the Lake

Kewaunee County Promotions and Recreation

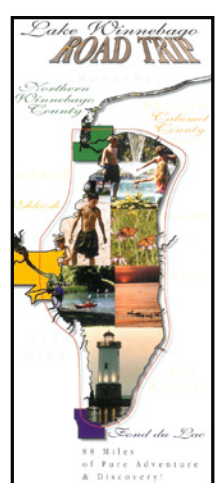
For more information on Kewaunee County contact:

Kewaunee County Promotions and Recreation  
920-388-0444  
[www.kewauneco.org/rec](http://www.kewauneco.org/rec)

Everything Grows Better Here

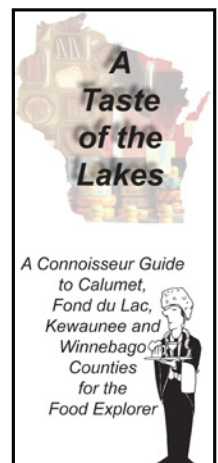
# Welcome to The Winnebago System

**Would you like to explore more?**  
The following brochures offer opportunities to see more of the Lake Communities.

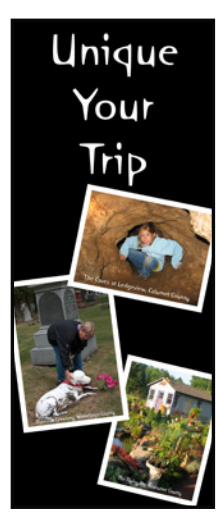


**Lake Winnebago Roadtrip**  
For your next road trip, try the 85 miles of adventure and discovery traveling around Lake Winnebago. What a great way to spend the weekend.

**A Taste of the Lakes**  
A connoisseur's guide to the hidden culinary delights of the area covering all the food groups from wine to cheese to chocolate.

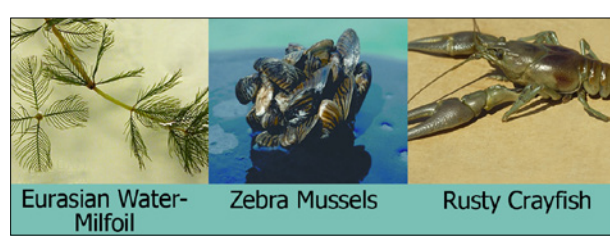


**Unique Your Trip**  
A guide to those 'out of the way' places that only the locals know about. The unique, the unusual, the exclusive.



Call 877-303-9200 for your free copy today and enjoy us on the land and on the water!

**Don't take these hitchhikers for a ride!**



Invasive species like zebra mussels, Eurasian water-milfoil and rusty crayfish are causing problems for Wisconsin's lakes and rivers. Did you know that you might be helping them spread?

The main way invasive species get into lakes, rivers, and wetlands is by "hitching" rides with unsuspecting boaters, anglers, and other outdoor recreators. If you leave a body of water without taking the precautions recommended here, you could be transporting these harmful species from one body of water to another.

Unfortunately, Lake Winnebago has already been impacted by some aquatic invaders, but there are many problematic species which are not yet in Lake Winnebago and you can help keep them out. You can also help keep these invaders from spreading to other lakes and rivers—many of which are still free from invasive species.

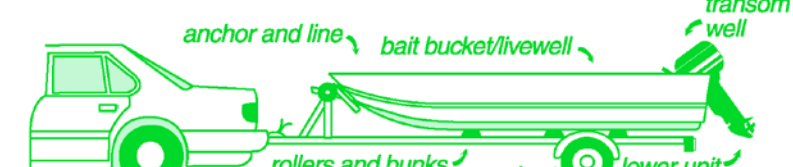
The good news is that you can help protect our valuable lakes, rivers and wetlands by taking a few easy steps. Each time you get ready to leave a water body, make sure to:

- **Inspect** your boat, trailer and equipment and **remove** visible aquatic plants, animals and mud
- **Drain** water from your boat, motor, bilge, live wells and bait containers
- **Dispose** of leftover bait in the trash, not in the water
- **Rinse** your boat and recreational equipment with hot water OR dry for at least five days.

Taking these simple actions will help protect Wisconsin's waters for our children and grandchildren—ensuring that our scenic and bountiful waters will still be healthy the next time you come to visit!

**It's the Law!**

Wisconsin statutes prohibit launching a boat, boat trailer or boating equipment if there are any aquatic plants attached.



When inspecting your boat for plants and animals, be sure to check the spots labeled in the drawing above.

**VHS Alert**

In spring 2007 a deadly new fish disease was found in the Lake Winnebago System and Lake Michigan. Viral Hemorrhagic Septicemia virus (VHS) can affect numerous species of fish, including many sport fish.

VHS is not dangerous to people who handle or eat their catch, but poses a serious threat to many species of fish that are native to Wisconsin. The VHS virus, which originated in Europe, is considered an invasive species in Wisconsin.

Like other invasive species, VHS spreads to new waters on boats and equipment. To prevent the spread of VHS, boaters should carefully inspect and clean their boats and equipment every time they leave a landing, just as they would for other invasive species.

In addition, the following rules will prevent the spread of VHS. Boaters on the Lake Winnebago system need to:

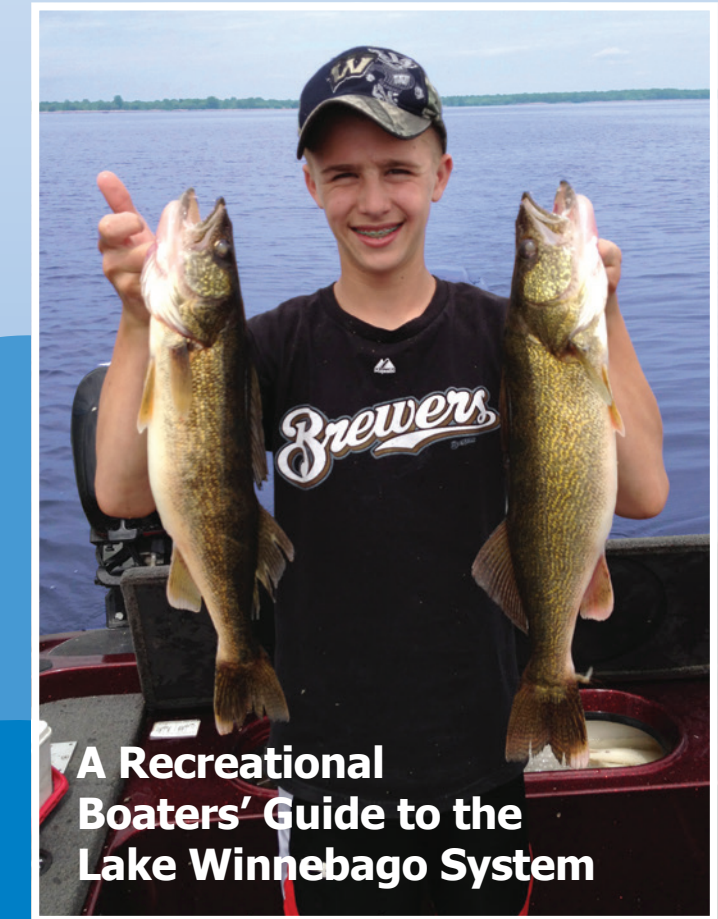
- Drain all water from boat, motor, bilge, live wells and bait containers.
- Never move live fish, including minnows, from one body of water to another.
- Dispose of leftover bait in the trash, not in the water or on land.
- Buy minnows only from licensed Wisconsin bait dealers. If catching your own bait, use it to fish only the water you caught it from.

For more information contact:  
Wisconsin Department of Natural Resources  
608-267-3531 or dnr.wi.gov/invasives

www.TravelTheLakes.com



# Fishin' & Cruisin'



**A Recreational Boaters' Guide to the Lake Winnebago System**

**Fifth Edition**

This map is to be used for tourism purposes only and is not to be used as a navigational aid.

All information contained within is to the best of the Lake Winnebago Marketing Groups' knowledge and has no guarantee.

## Marinas

	GPS Coordinates	Address	Phone	Shore Fishing	Rest-rooms	Showers	Gas	Pumpout	Shorepower	Slip Information	Repair	Boat Sales/Rental	Description
High Cliff State Park Marina	44.1656 -88.2973	N6779 Lower High Cliff Road, Sherwood	920-989-1349	Yes	Yes	Yes, at park	•						4 paved lanes. Launch depth over 3 feet. Boarding dock. Over 25 trailer stalls. Convenience store and yacht club. Within walking distance to High Cliff State Park. Trails, picnic areas, camping, dog area. Sheltered harbor.
Calumet County Park	44.1042 -88.3273	N6150 County Highway EE, Stockbridge	920-439-1008	Yes	Yes	Yes, at park							4 paved lanes. Launch depth 3 feet. Boarding dock. Over 25 trailer stalls. Convenience store, concessions, Trails, picnic areas, playground, camping. Sheltered harbor. More than 5 paved lanes. Launch depth over 3 feet. Boarding dock. Over 25 trailer stalls. Sheltered harbor.
Stockbridge Harbor County Park	44.0704 -88.3286	1903 West Lake Street, Stockbridge	920-439-1008	Yes	Yes								3 paved lanes. Launch depth 3 feet. Boarding dock. 6-10 trailer stalls. Sheltered harbor.
Brotherton Harbor County Park	43.9663 -88.3207	N5691 Harbor Road, Brotherton	920-439-1008	Yes	Yes								70 ft. lookout tower. Ice, soda, launch stickers available. Jim and Linda's Supper Club within walking distance.
Columbia Park	43.91425 -88.33286	County Highway W, Pipe	920-960-0187	Yes	Yes	•	•	•	•	4 permanent slips. 12 overnight slips. tie-up available at seawall			Next to Columbia Park and amenities. Ice and soda available, indoor storage, lift out service.
Calumet Harbor Marina	43.91425 -88.33286	N10361 Calumet Harbor Rd, Malone	920-360-3411 or 920-336-2818							Private marina with 65 permanent slips, some transient available			
Velvet Beach	43.923144 -88.319808	Velvet Beach Road, Malone											Launch ramp and limited roadside parking.
Fisherman's Road Harbor	43.873562 -88.362663	Fisherman's Road, Pipe		Yes	Yes					Landing, seawall to tie-up			Small lighthouse maintained by the Fisherman's Road Fishing Club.
Garden Drive Launch	43.798925 -88.42585	Garden Drive, Taycheedah								Launch ramp at end of road			Street parking in area, no parking on Garden Drive, gas station/convenience store across street.
Lakeside Park	43.795801 -88.4416	555 North Park Avenue, Fond du Lac	920-322-3460	Yes	Yes	•	•	•	•	232 permanent slips, transient and overnight parking available			Convenience store, concessions, water hook up available. Lighthouse. Salty's Seafood and Spirits within walking distance. Storage and lift out service.
Fond du Lac Yacht Club	43.795909 -88.43638	705 Mohawk Avenue, Fond du Lac	920-921-9950							9 guest slips			
Lakeside Park West	43.797864 -88.461584	Litscher Road, Fond du Lac	920-322-3460	Yes	Yes					Launch ramps			Dog park.
Hay Waukegan	43.844231 -88.463164	6 miles north of Fond du Lac		Yes	Yes								Launch ramp, breakwater and large parking area, picnic facilities.
Nagy Park/Black Wolf Boat Landing	43.9125 -88.4710	6850 Fond du Lac Road, Oshkosh	920-232-1960	Yes	Yes								2 paved lanes. Launch depth over 3 feet. Boarding dock. Over 25 trailer stalls. Picnic area. Drinking water on a seasonal basis. Sheltered harbor.
Hergert Sport Center	44.0324 -88.5673	1232 North Sawyer Street, Oshkosh	920-231-8520										
Skipper Bud's Marina	44.0382 -88.5857	1351 Egg Harbor Lane, Oshkosh	920-231-3200										
Ecklund Motorsports & Marina	44.0525 -88.5765	2794 Marine Drive, Oshkosh	920-233-3313										
Spellman's Marina	44.0319 -88.5602	1713 West New York Avenue, Oshkosh	920-231-1850										
24th Avenue Boat Launch	43.9917 -88.5359	South Main Street/24th Avenue, Oshkosh	920-236-5080	Yes	Yes								2 paved lanes. Launch depth 3 feet. Boarding dock. 21-25 trailer stalls. Drinking water and picnic area.
Rainbow Park	44.0359 -88.5364	South Main Street/Fugleberg Trail, Oshkosh	920-236-5080	Yes	Yes								2 paved lanes. Launch depth 3 feet. Boarding dock. More than 25 trailer stalls. Soda machines.
Pioneer Marina	44.0050 -88.53465	100 Pioneer Drive, Oshkosh	920-233-1981							172 permanent slips, 18 overnight, 25-30 transient			Harbor house has concessions and ice. Lift out service.
Bayshore Marina & Storage	44.01223 -88.53060	617 Bay Shore Avenue, Oshkosh	920-231-9936							70 slips in dolly system, 12 secure wet slips, 8 with power and water			Engine repair, repower, custom rigging. Party dock with grill.
Sweetwater Performance Center/Marina	44.0130 -88.5384	501 South Main Street, Oshkosh	920-230-6438		Yes	•	•	•	•	50 in water slips, transient, 30 amp service, rack storage			Ship store, patio and grill, clubhouse with kitchenette and TV lounge. New and used boat sales.
Mill Street Boat Launch	44.0113 -88.5291	Mill Street, Oshkosh	920-236-5080	Yes	Yes								2 paved lanes. Boarding dock. 5 trailer stalls.
Millers Bay at Menominee Park	44.0276 -88.5202	Hazel Street, Oshkosh	920-236-5080	Handicapped-accessible fishing pier	Yes					Docks and mooring in harbor allowed day or overnight			4 paved lanes. Launch depth over 3 feet. Boarding dock. Over 25 trailer stalls. Picnic area, playground, amusement rides, Menominee Park Zoo. Sheltered Harbor.
Asylum Point County Landing	44.0652 -88.5169	3400 Sherman Road, Oshkosh	920-232-1960	Yes	seasonal					Docks			2 paved lanes. Launch depth 3 feet. Boarding dock. 30 trailer stalls. Lighthouse on Asylum Point.
Lakeside Marina	44.0253 -88.5600	902 Taft Street, Oshkosh	920-231-4321							Permanent slips for sale			Boat repair and sales.
Fox Harbor Marina	44.0297 -88.5625	1000 Bauman Street, Oshkosh	920-235-2028	Yes	•					Private marina with mooring space only, 15-18 boat slips			Harbor house has restrooms, showers, washer, dryer, freezer and security fence. Each boat has access to water, cable, telephone and electric.
Osh-O-Nea Landing	44.1052 -88.4834			Yes									
Riverside Park - Oshkosh	44.01350 -88.53632	North Main/Ceape Streets, Oshkosh	920-236-5080	Shorewall fishing	Yes								Picnic area. Walking distance to Leach Amphitheater and access to Downtown Business District.
Michigan Street Pier - Oshkosh	44.0160 -88.5498			Yes									
Grundman Boat Landing and Park	44.1053 -88.4831	1801 Grundman Lane, Oshkosh	920-232-1960	Yes	seasonal					Docks			3 paved lanes. Launch depth over 3 feet. Boarding dock. More than 45 trailer stalls. Picnic area and drinking water. Sheltered harbor.
Recreation Park Boat Launch	44.1756 -88.4456	600 South Park Avenue, Neenah	920-886-6060	Yes	Yes					Docks			4 paved lanes. Launch depth over 3 feet. Boarding dock. Over 25 trailer stalls.
Kimberly Point Park	44.18566 -88.44159	North Park Avenue, Neenah	920-886-6060	Handicapped-accessible fishing dock	Yes					Seawall to tie up			Picnic area. Kimberly Point Lighthouse.
Riverside Park - Neenah	44.18150 -88.45059	East Wisconsin/North Park Avenue, Neenah	920-886-6060	Yes	Yes					Seawall to tie up			Park and picnic area. Walking distance to many restaurants and lounges on Wisconsin Avenue.
Neenah Riverwalk/Shuttuck Park	44.1860 -88.4589	210 East Wisconsin Avenue, Neenah	920-886-6060	Yes	Yes					Approximately 20 transient/overnight slips and tie-up space			Park with drinking water. Barrier free waterfront walkway, walk out pier with panoramic views of Fox River, concrete lawn for festivals and events. Pavilion
Doty Park	44.1852 -88.4496	711 Lincoln Street, Neenah	920-886-6060	Fishing deck	Yes					Docks			2 paved lanes. Launch depth over 3 feet. Boarding dock. 6-10 trailer stalls. Picnic area and playground.
Fritze Park	44.2049 -88.4703	899 North Lake Street, Menasha	920-720-7108										2 paved lanes. Boarding dock. 6-10 trailer stalls. Picnic area.
Barlow Lock Street	44.2021 -88.4604		920-967-3640										Paved lane
Ninth Street Boat Launch	44.2156 -88.4550	9th Street, Menasha	920-967-3640										Paved lane. More than 25 trailer stalls.
Smith Park	44.1988 -88.4396	Park and Keyes Street, Menasha	920-967-3640		Yes								Paved lane. Boarding dock. Picnic area in adjacent Smith Park.
Menasha Dock Association	44.1993 -88.4509	South end of Manitowoc Street, Menasha	920-967-3640	Yes	•	•	•						Picnic area in adjacent Smith Park.
Manitowoc Street	44.1993 -88.4509	South end of Manitowoc Street, Menasha	920-967-3640										Paved lane. Launch depth over 3 feet. 6-10 trailer stalls.
Valley Marine Mart	44.2016 -88.4597	100 Water Street, Menasha	920-722-6379										
Jefferson Park	44.2039 -88.4248	Third Street, Menasha	920-967-3640		Yes					Approximately 35 permanent slips			3 paved lanes. Launch depth over 3 feet. Boarding dock. Over 25 trailer parking stalls. Picnic area.
Landings/Winnebago Pool Lakes	44.0205 -88.5547	North Campbell Road, Oshkosh	920-236-5080	Fishing piers	seasonal					Paved lanes. Launch depth more than 3 feet. 6-10 trailer stalls.			2 paved lanes. Launch depth more than 3 feet. 4 boarding docks. 16-20 trailer stalls. Adjacent to the Oshkosh Seniors Center.
William Steiger Park	44.0205 -88.5547	North Campbell Road, Oshkosh	920-236-5080	Fishing piers	seasonal								2 paved lanes. Launch depth over 3 feet. 4 boarding docks. 16-20 trailer stalls. Adjacent to the Oshkosh Seniors Center.
Kubaska's Marina	44.022499 -88.508103	400 North Campbell Road, Oshkosh	920-236-9678							Individual private boathouses for rent			Next to William Steiger Park.
Stadler Park	44.0359 -88.5661	501 West Main Street, Oshkosh	920-236-5080	Fishing piers	Yes					Docks			6 paved lanes. Launch depth over 3 feet. Boarding dock. More than 25 trailer stalls. Playground, picnic shelters and soda machines.
Between the Bridges	44.0153 -88.5389	Downtown Oshkosh Riverwalk	920-236-5080	Yes	Yes					Public Docks			
Lake Winnebago Park	44.1137 -88.7054	300 Parkway Drive, Winnebago	920-582-4381	Shorewall fishing	Yes					Dock, tie-up at seawall and overnight mooring in channel			2 paved lanes. Launch depth 3 feet. Boarding dock. Over 25 trailer stalls. Picnic area and playground.
Winnebago Public Docks	44.1099 -88.7110	21 West Main Street Winnebago	920-582-4381	Shorewall fishing	Yes					Docks, overnight mooring			2 paved lanes. Launch depth over 3 feet. Boarding dock. 16-20 trailer stalls.
Winnebago Bridge - Winnebago	44.0672 -88.4159			Yes									
Lang's Landing (Winnebago)	44.1124 -88.7119	111 North 1st Street	920-582-7501							Located adjacent to the Winnebago public boat ramp on the Wolf River			
Wolf River House Resorts (Winnebago)	44.1116 -88.7083	17 North 1st Avenue	920-582-4555										2 paved lanes. Shallow water, use caution when leaving harbor. Boarding dock. More than 25 trailer stalls. Restrooms and parking available off Trauba Road.
Boom Bay Boat Landing	44.1625 -88.7692	7499 Richter Lane, Larsen	920-232-1960		seasonal					Docks			2 paved lanes. Launch depth over 3 feet. Boarding dock. 25 trailer stalls. Picnic area.
Kiesow's Landing and Storage	44.19897 -88.78291	7640 Kiesow Road, Larsen	920-836-2990							Docks, mooring			2 paved lanes. Launch depth over 3 feet. Boarding dock. 16-20 trailer stalls. Picnic area, playground.
Lake Poygan Boat Landing	44.1234 -88.8412	8816 Poygan Shores Road	920-232-1960		seasonal					Tie-ups			2 paved lanes. Launch depth 3 feet. Boarding dock. 25 trailer stalls. Picnic area.
Stadler Park	44.0359 -88.5661	501 West Main Street, Oshkosh	920-236-5080	Shorewall fishing	Yes					Docks			2 paved lanes. Launch depth over 3 feet. Boarding dock. 16-20 trailer stalls. Picnic area, playground.
Omro Public Docks	44.03997 -88.74575	East Main Street, Omro	920-685-7000										Las Brasos Restaurant and Tanner's Tap & Grill within walking distance.
Scott Park	44.03955 -88.73814	515 East Main Street, Omro	920-685-7000							Mooring sites and seawall docking			Picnic area and soda machines. Dugout Sports Bar & Restaurant, Main Street Restaurant and Tanner's Tap & Grill within walking distance.
Miller Park	44.0417 -88.7309	1121 Kwanis Street, Omro	920-685-7000	Yes	Yes					Dock and seawall tie up			2 paved lanes. Boarding dock. More than 25 trailer stalls. Soda machines. Adjacent to Omro Family Aquatic Center.
Fox and Hounds Landing	44.0408 -88.7387	504 East River Drive, Omro	920-685-7000	Shorewall fishing	Yes								2 paved lanes. Launch depth over 3 feet. Boarding dock. 6-10 trailer stalls. Picnic area, playground.
Eureka Boat Landing	44.0046 -88.8453	3103 Liberty Street, Eureka	920-232-1960	Wharf along shoreline	seasonal								3 paved lanes. Launch depth 3 feet. Boarding dock. 25 trailer stalls. Drinking water, picnic shelter, playground.
Tilly's Too Tavern	44.09855 -88.65366	5071 Washington Street, Butte Des Morts	920-582-7626	Fishing Pier									Tilly's Too Tavern, The Butte des Morts Supper Club and the White House Inn Restaurant within walking distance.
Lake Butte Des Morts Landing	44.0517 -88.6645	Leonard Point Road/Samers Bay Road	920-232-1960	Handicapped-accessible fishing pier	seasonal								4 paved lanes. Launch depth 3 feet. Boarding dock. More than 25 trailer stalls. Drinking water, picnic area, playground. Sheltered harbor.
Tustin Landing	4												