

A vibrant desert landscape featuring several tall palm trees in the foreground and a range of rugged, brown mountains in the background under a clear blue sky with a few wispy clouds.

# Palm Springs Development Project College of the Desert

Board of Trustees Meeting  
January 20, 2023



# Agenda

- 1** Program Summary
- 2** Concept
- 3** Site Design Development
- 4** Building Development

# Program Summary

# Full Space Program - Phase 1

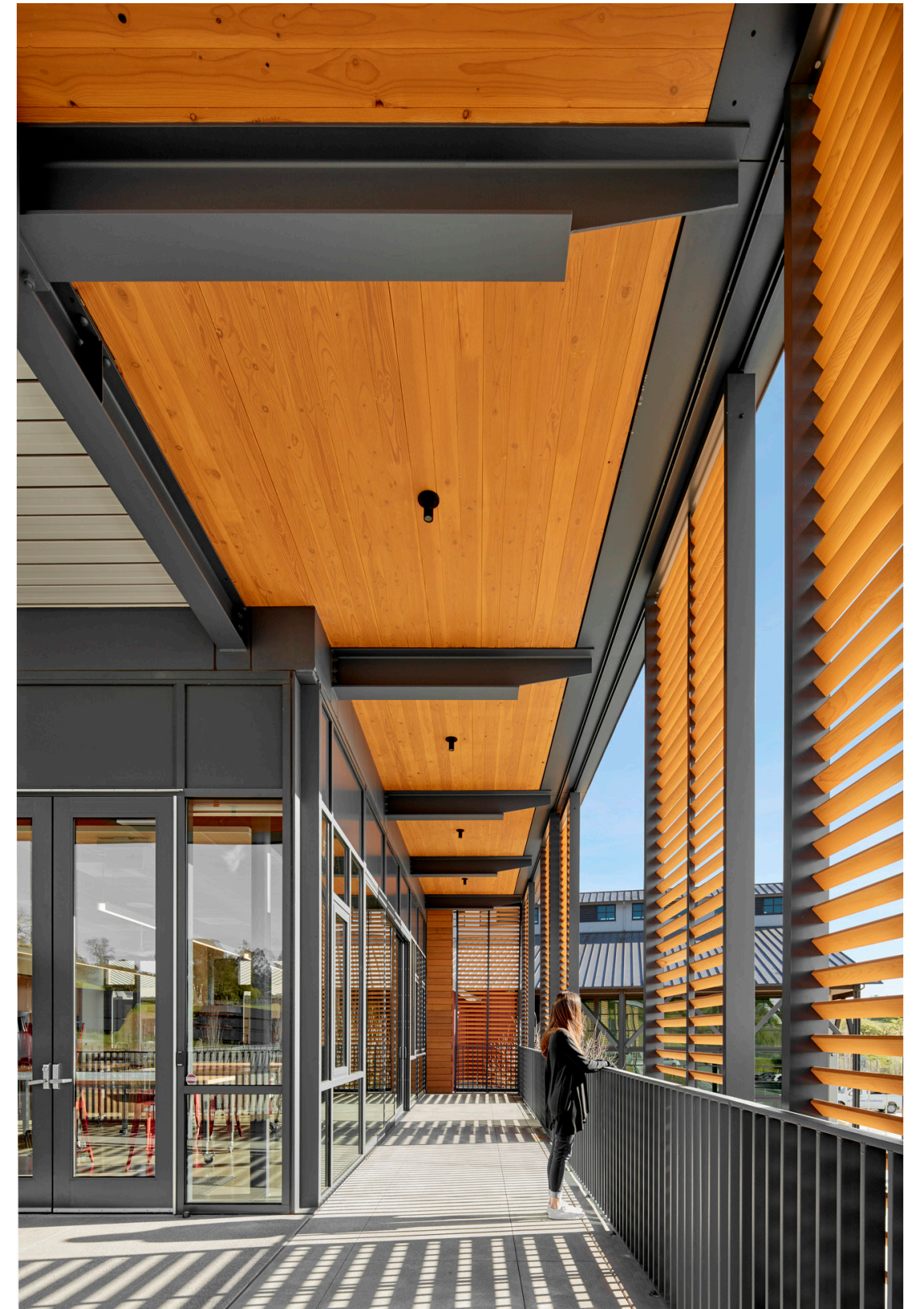
	ASF*	GSF**
Accelerator & Hospitality	89,230	135,629
Student Commons	10,650	
Student Services	4,165	
Student Academic Support / Tutoring and Technology Services/Digital Library and Bookstore Services	10,560	
Instructional Flex Space	19,805	
Partnership and Community Education (PaCE)	1,630	
Architecture	12,760	
Media Arts	8,755	
Culinary Management	12,090	
Hospitality Management	2,560	
Faculty/Staff Offices	1,770	
Administration	1,320	
Building Support	3,165	
Central Utility Plant	n/a	10,967
Maintenance and Operations	4,730	5,913
Maintenance and Operations	3,660	
Public Safety	1,070	
	93,960	152,509

\*Assignable Square Footage (ASF) - areas that are assigned to function. *Includes classrooms, offices, conference rooms, etc.*  
\*\*Gross Square Footage (GSF) - total area to the outside walls. *Includes wall thicknesses, circulation, stairwells, mechanical equipment, etc.*



# Sustainability Strategies

- 50% of campus energy generated onsite (photovoltaics provided via third-party)
- “All-electric” campus (no gas, except culinary)
- 40% indoor water savings
- Graywater reuse for irrigation
- 30% landscape dedicated to native/adaptive plants
- Tap into recycled water connection
- 20% of site dedicated to open space
- Electric Vehicle Charging Stations
- Recycled Content Materials
- 75% construction waste diversion
- LEED Gold Baseline. Reach goal for Platinum.





# Concept Overview



# Guiding Principles (per original master plan)

**1**

Forward Thinking

**2**

Student  
Centric

**3**

Community  
Focused

**4**

Merging  
Inside + Out

**5**

Intuitive +  
Welcoming

**6**

Contextual  
Materiality

**7**

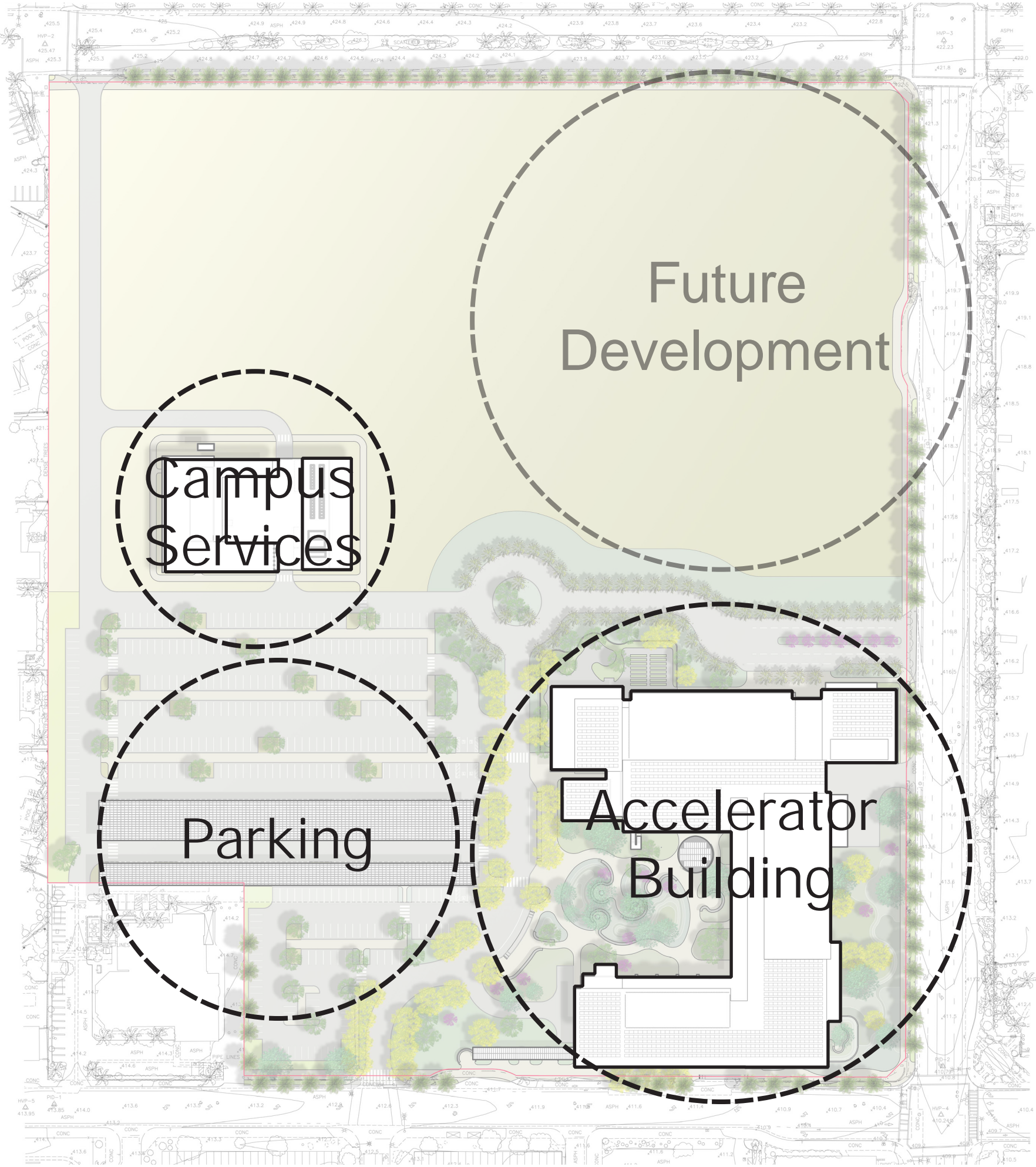
Architecture  
That Reveals

**8**

A Model of  
Stewardship and  
Resiliency

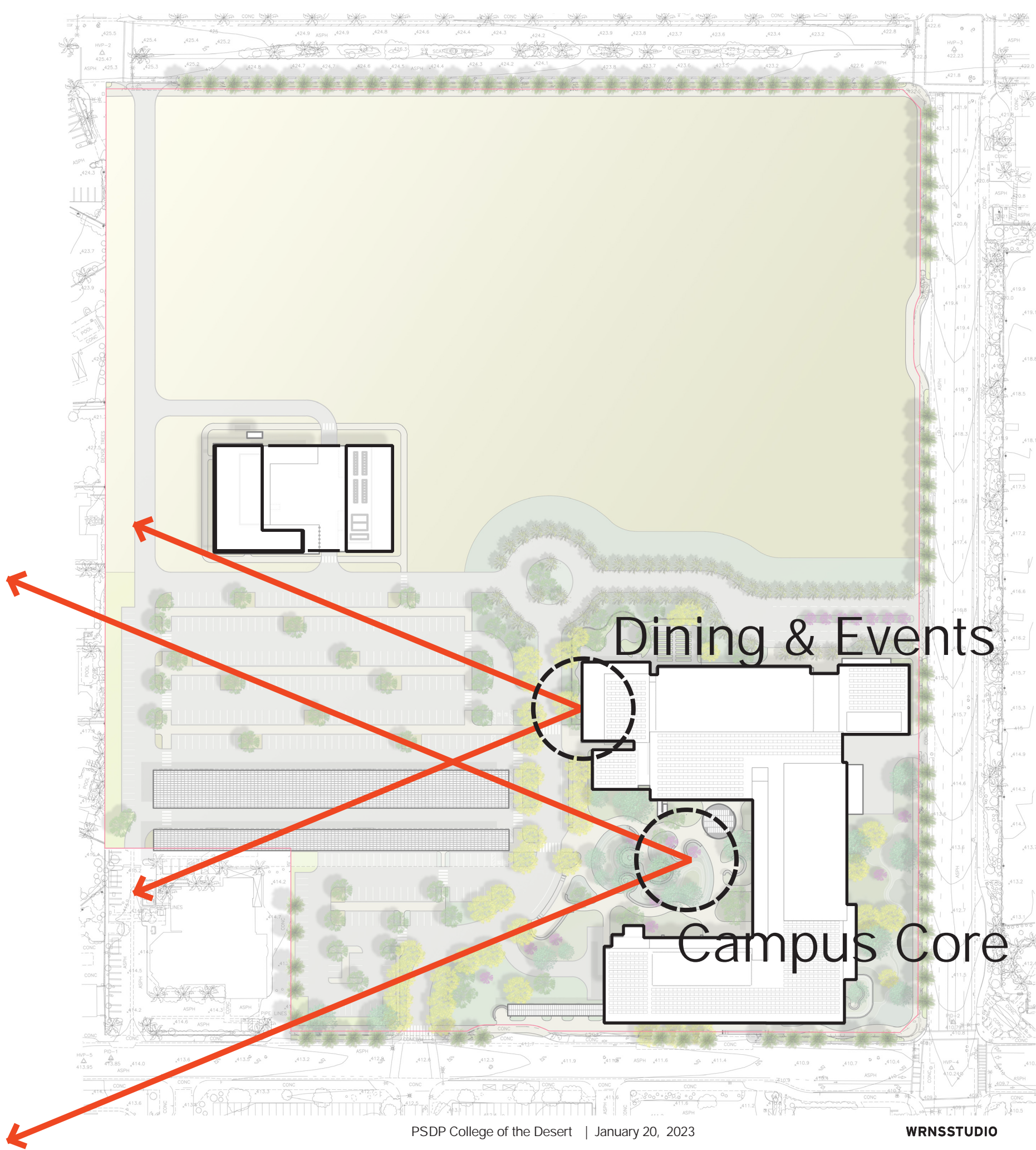


# Site Plan Organization



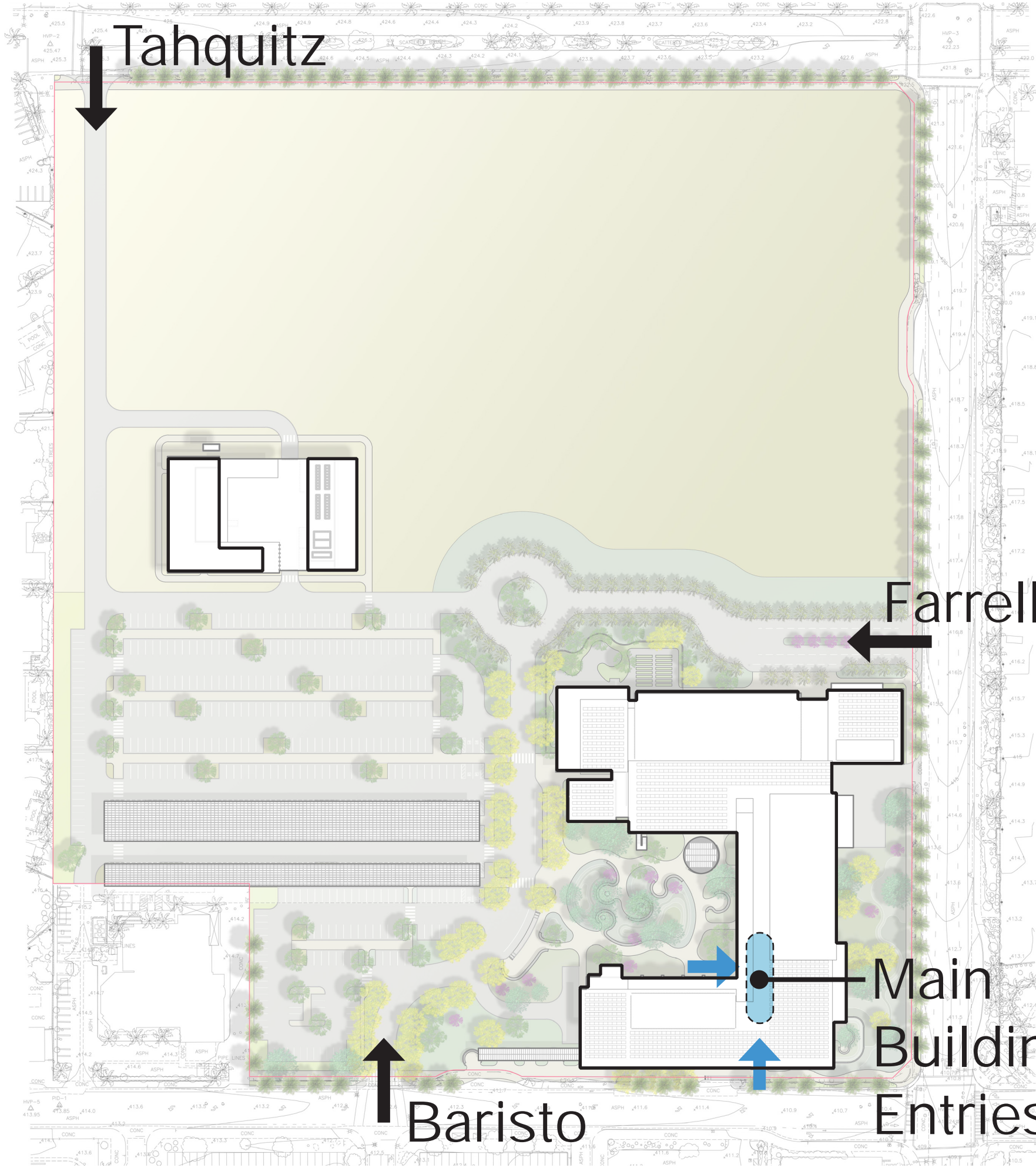


Views



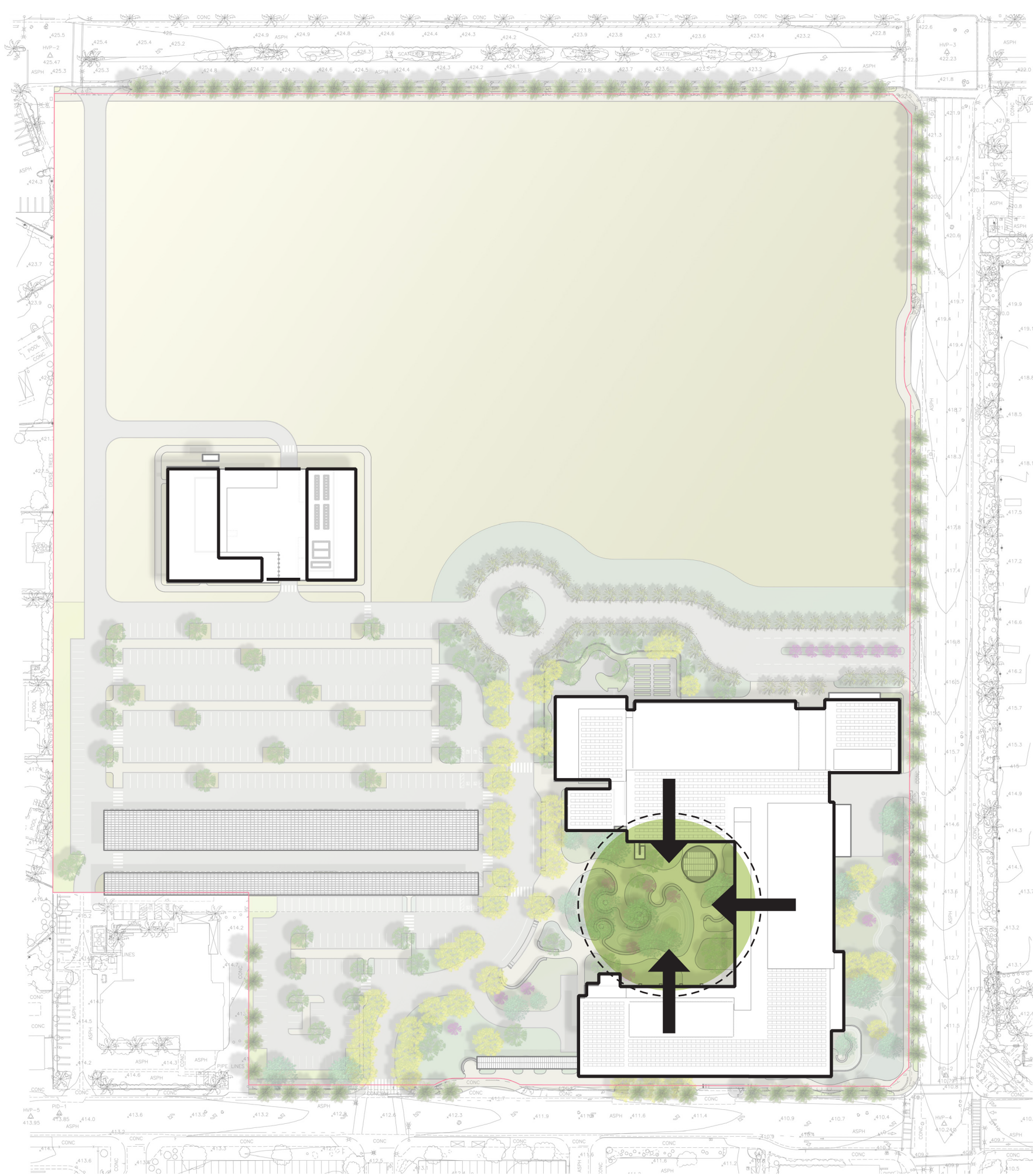


Access



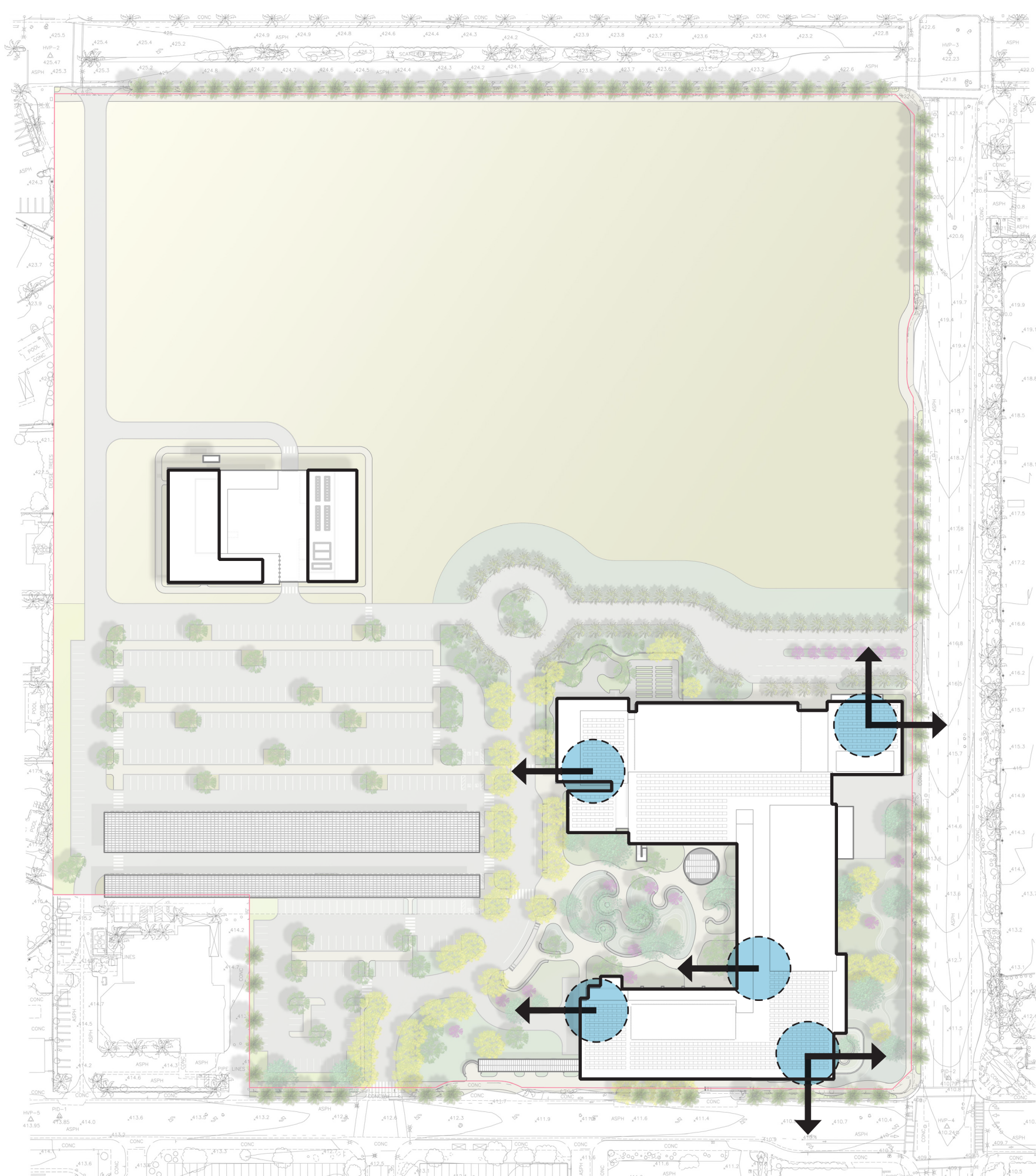


# Learning Oasis



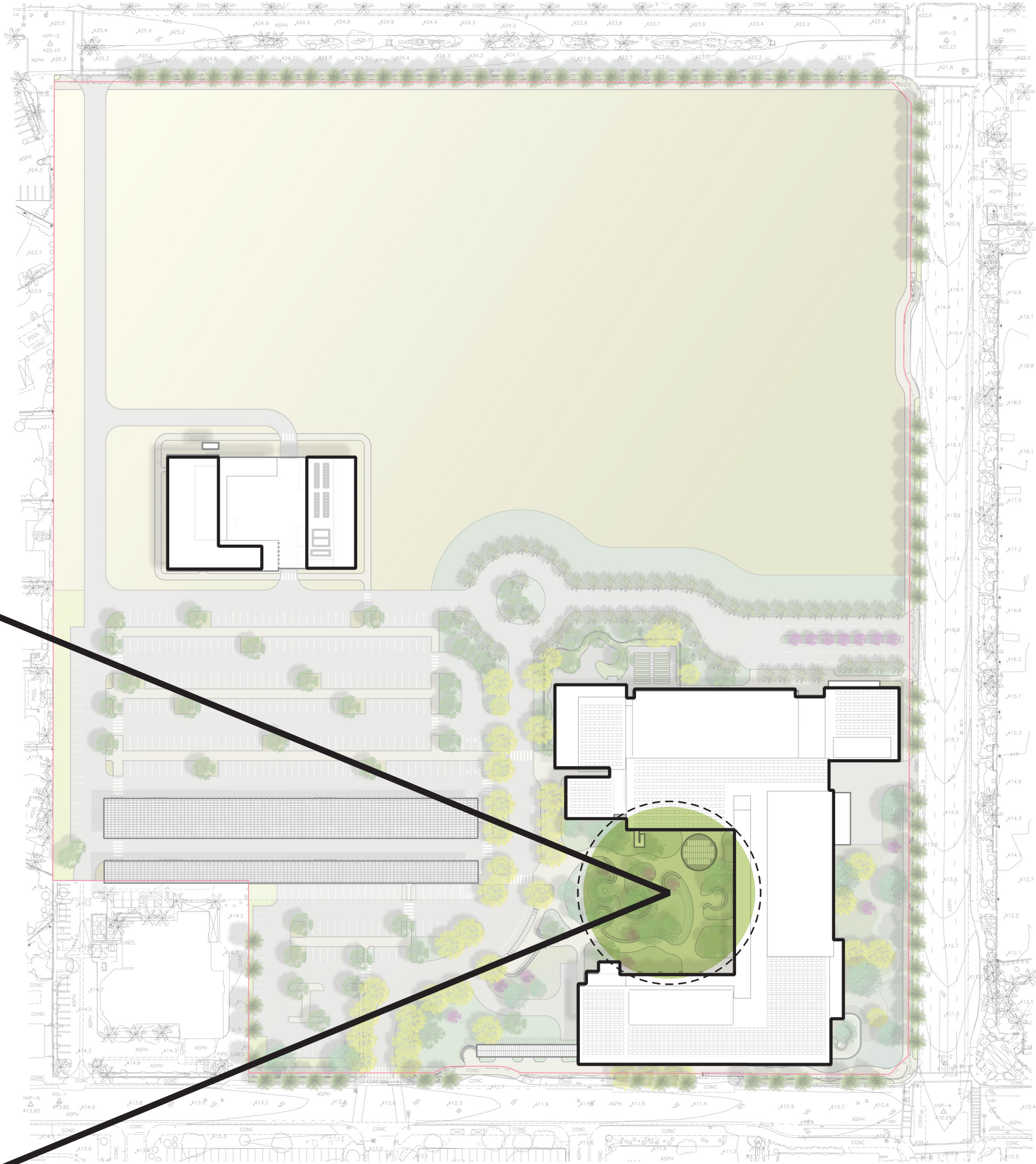


# Community Connections





# Embracing the Mountains

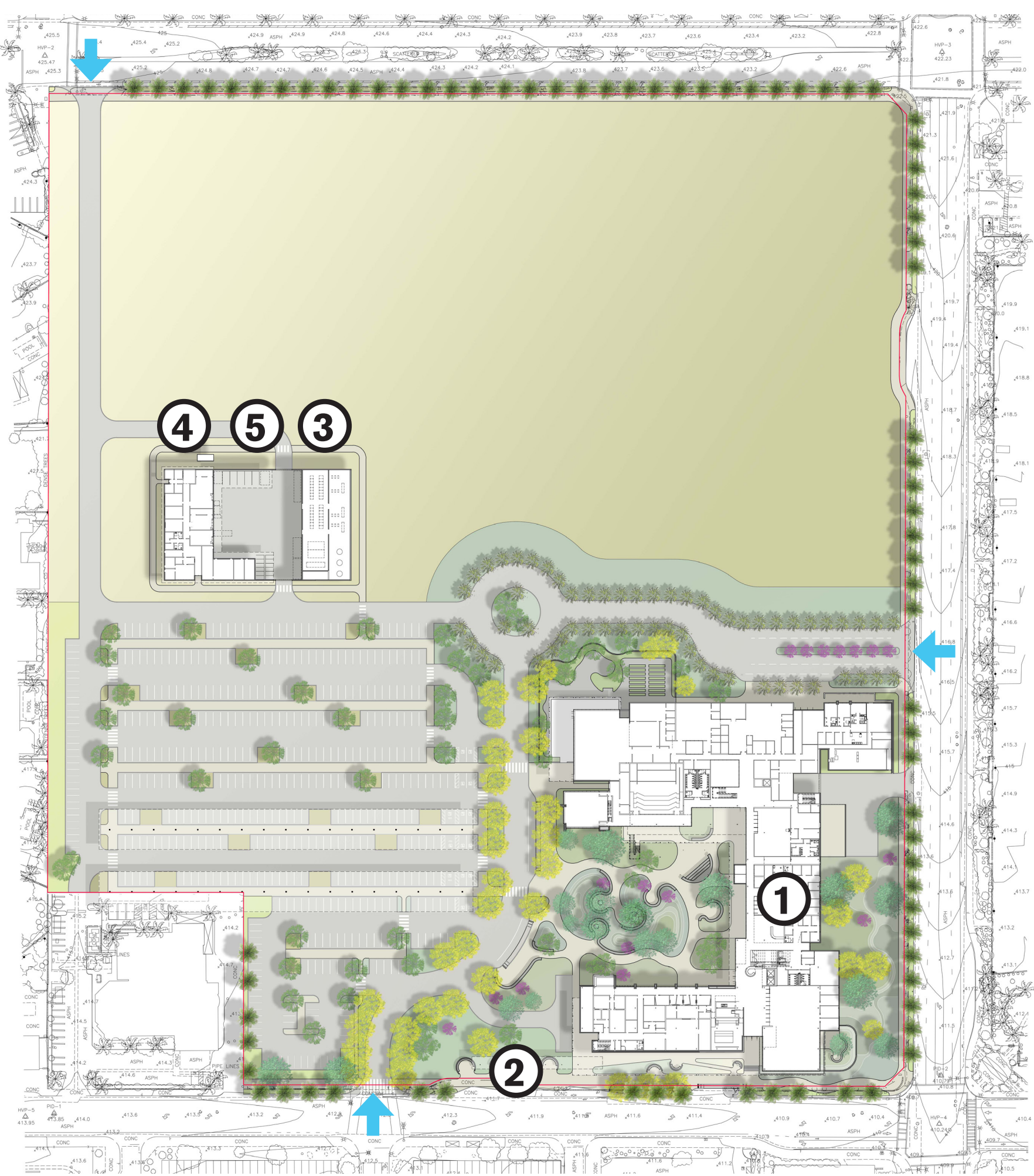


Site Design Development



# Site Plan

- ① Accelerator + Hospitality Institute
- ② Mobility Hub
- ③ Central Utility Plant
- ④ M&O Building
- ⑤ M&O Service Yard
- ➡ Vehicular Entry

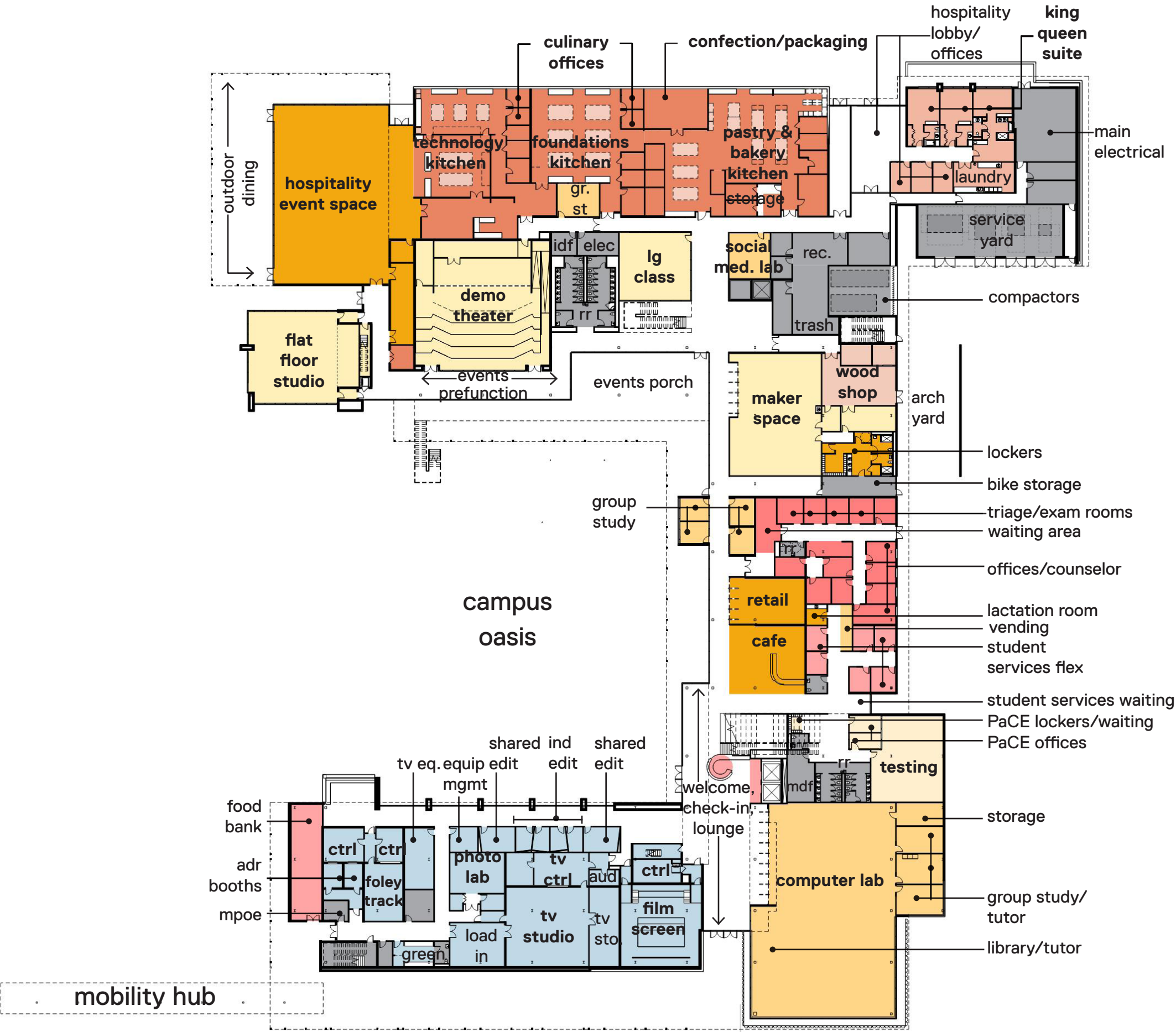
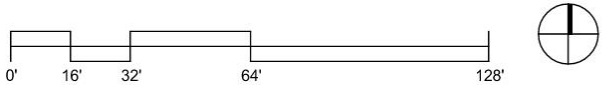


# Building Development



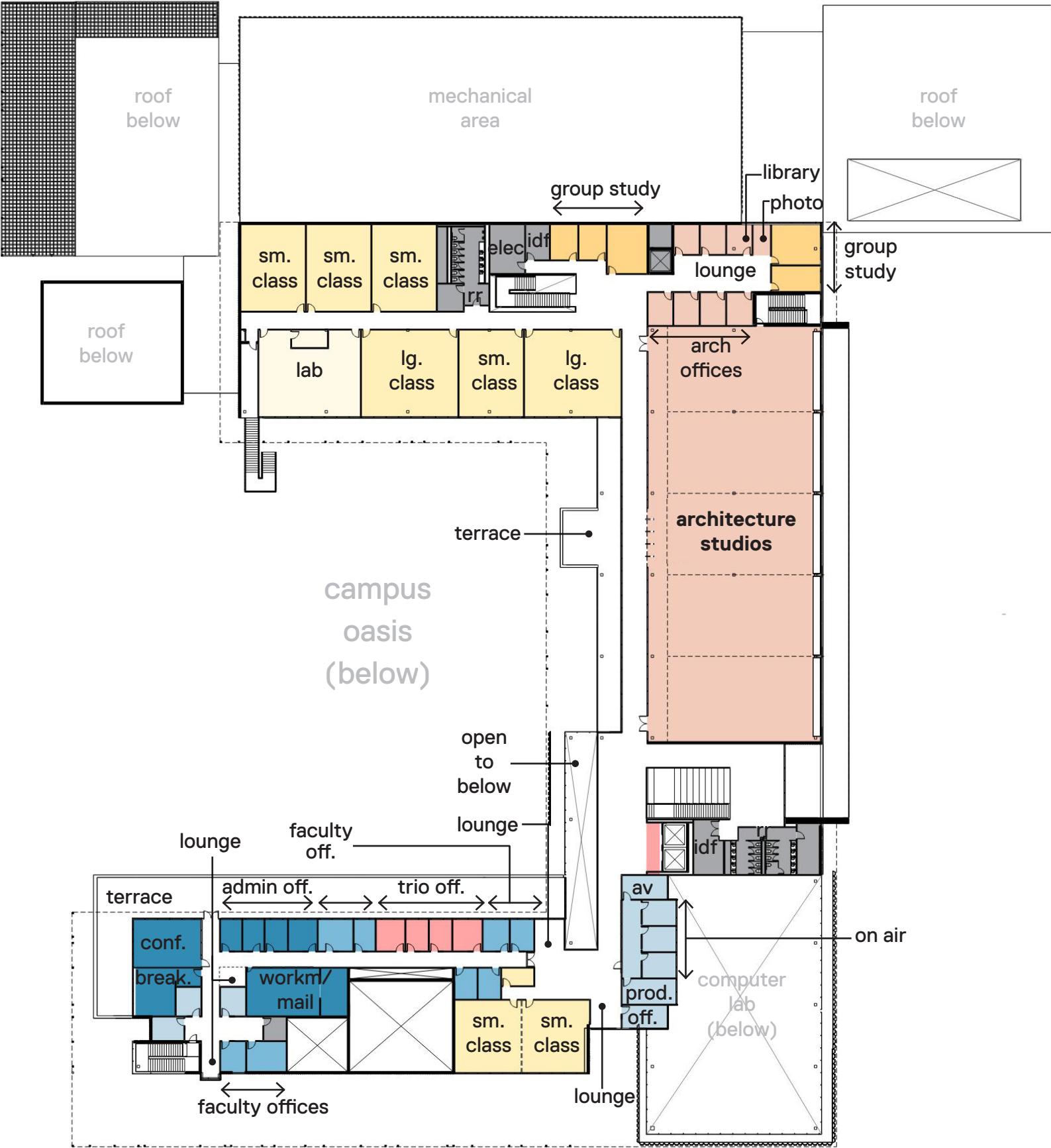
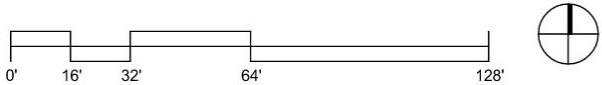
# Accelerator - Level 1

- STUDENT COMMONS
- STUDENT SERVICES
- STUDENT HEALTH
- STUDENT ACADEMIC SUPPORT/TECH SERVICES
- INSTRUCTIONAL CLASSROOM
- LAB
- PACE
- ARCHITECTURE
- DIGITAL MEDIA / RADIO
- ADMINISTRATION
- FACULTY/STAFF
- CULINARY MANAGEMENT
- HOSPITALITY MANAGEMENT
- BUILDING SUPPORT



# Accelerator - Level 2

- STUDENT COMMONS
- STUDENT SERVICES
- STUDENT HEALTH
- STUDENT ACADEMIC SUPPORT/TECH SERVICES
- INSTRUCTIONAL CLASSROOM
- LAB
- PACE
- ARCHITECTURE
- DIGITAL MEDIA / RADIO
- ADMINISTRATION
- FACULTY/STAFF
- CULINARY MANAGEMENT
- HOSPITALITY MANAGEMENT
- BUILDING SUPPORT





# Campus Support Building (M&O + CUP + Service Yard)

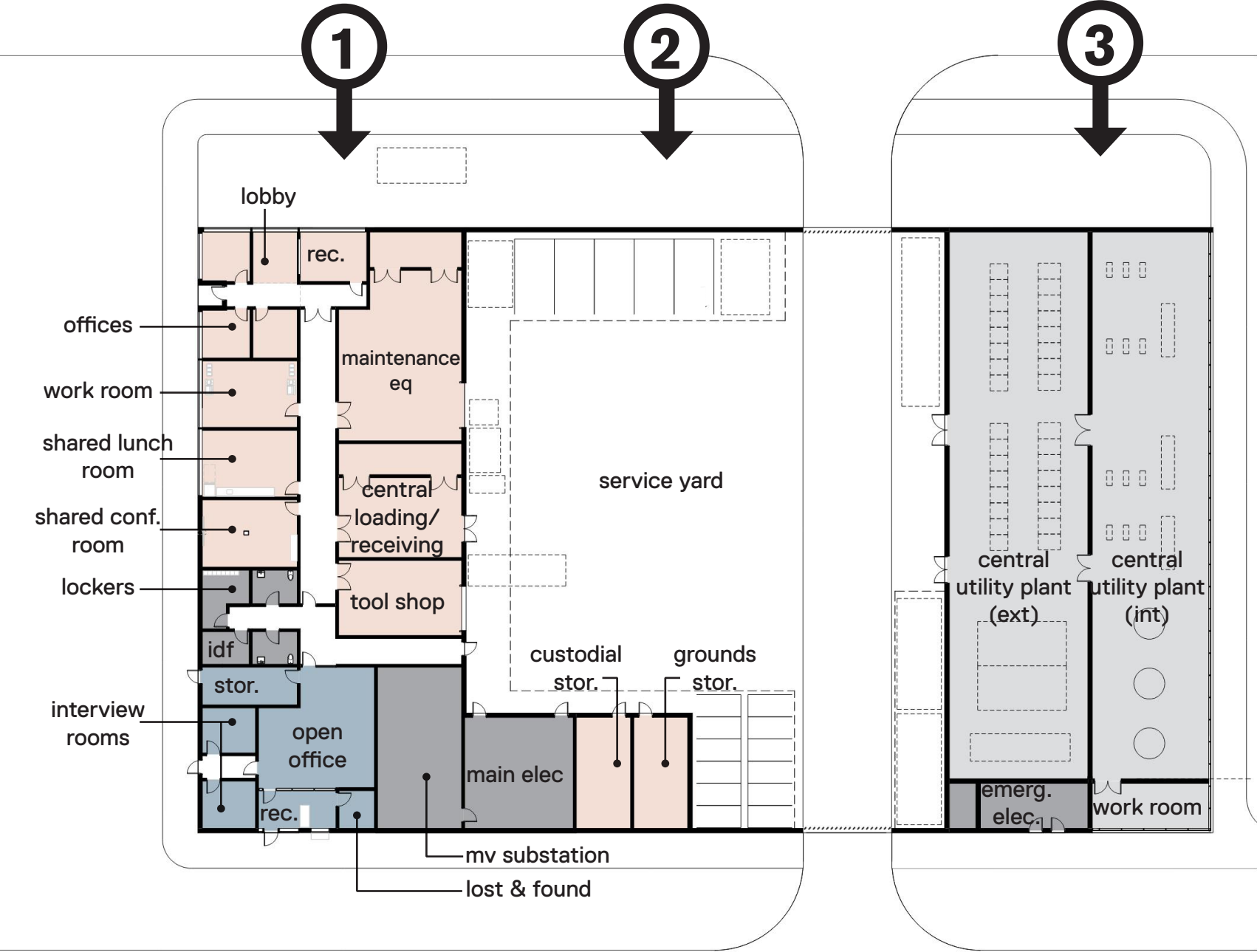
- ① M&O + Campus Security
- ② Service Yard
- ③ Central Utility Plant

MAINTENANCE & OPERATIONS

PUBLIC SAFETY

CENTRAL UTILITY PLANT

MEPT & SERVICE

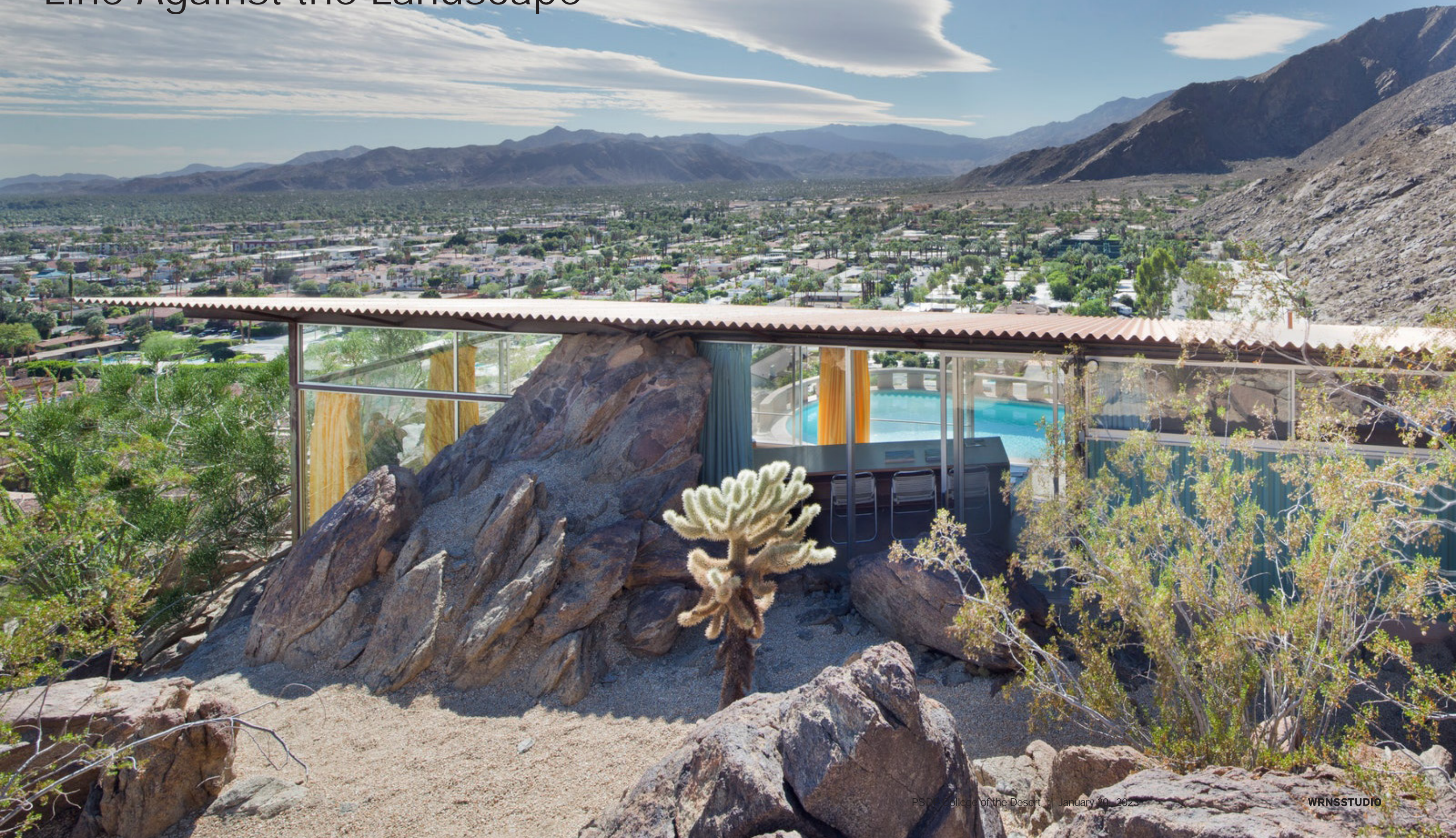


# A View to the Mountains





# Line Against the Landscape





# Volumes Connected to Landscape





Situated in Semi-Urban Context



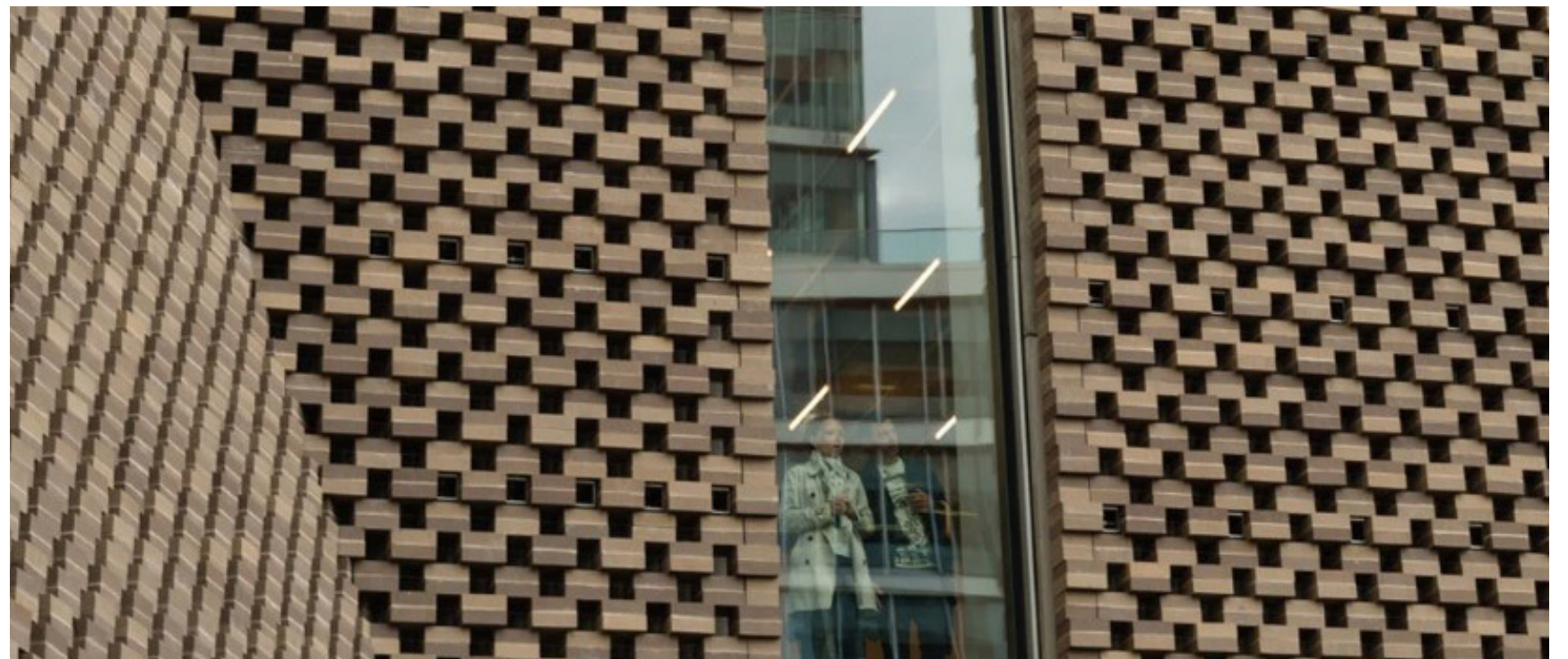


# Active Social Space



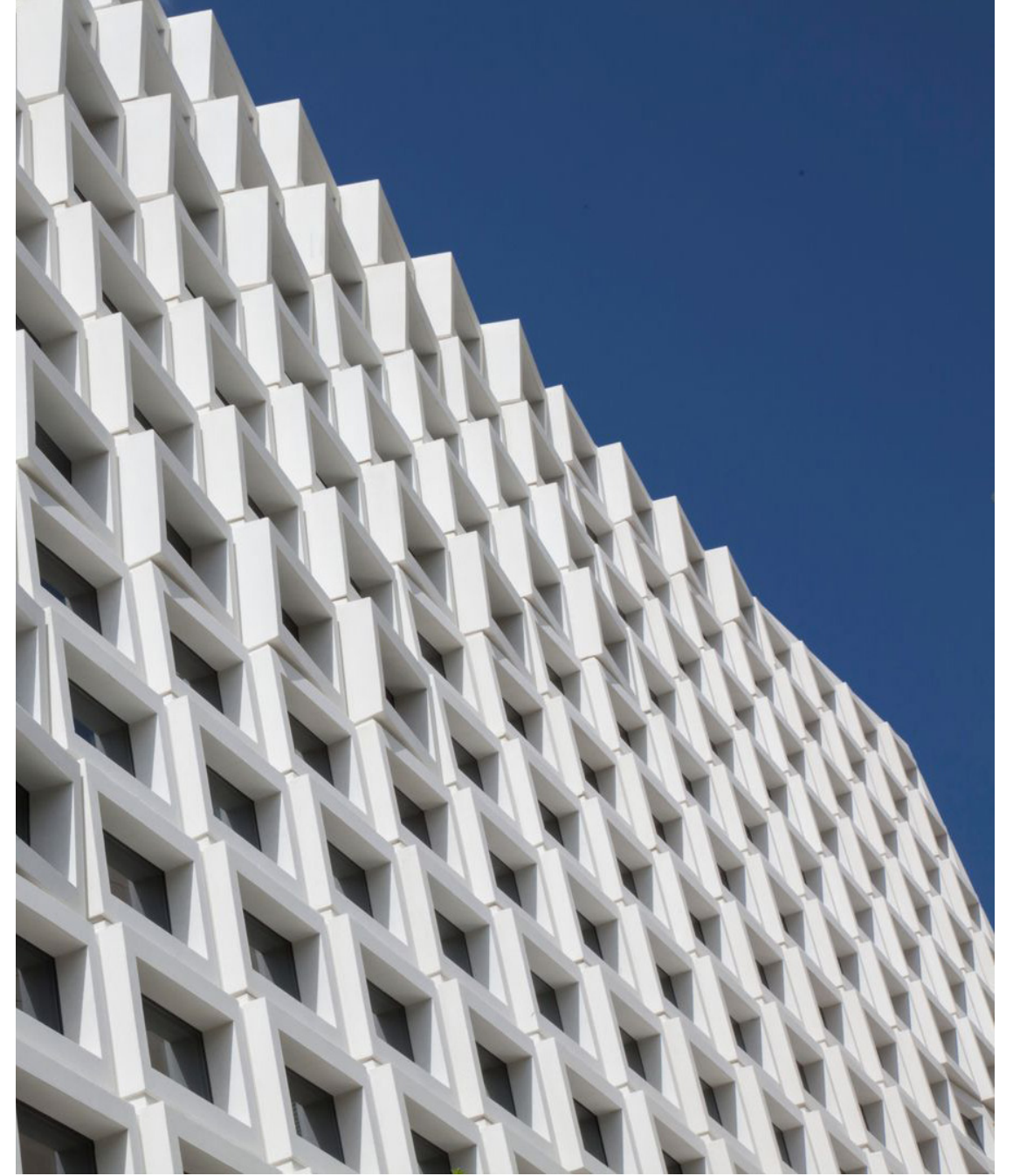
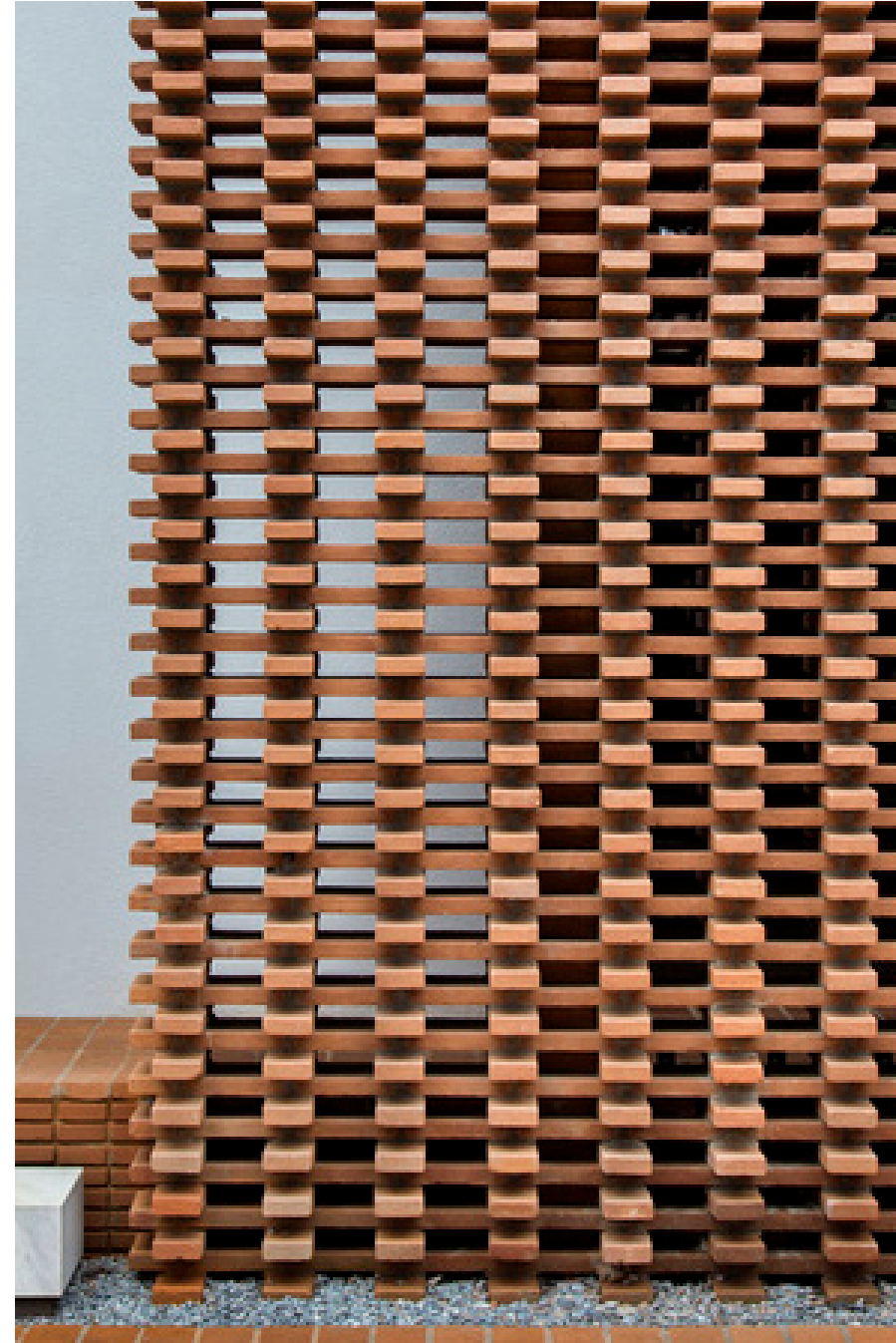


# Block Wall: Textural, Human Scaled, Tactile



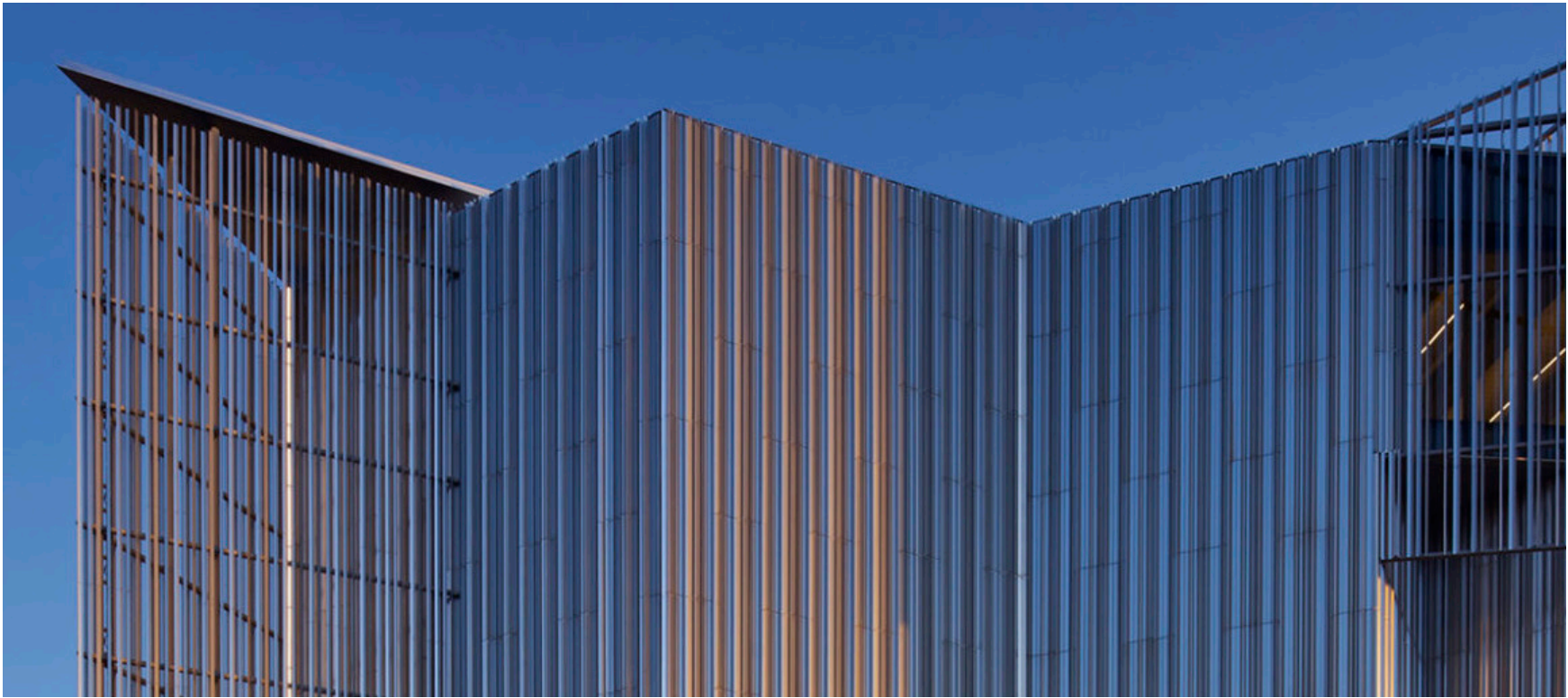


# Shading & Screening: Transparency, Performative, Dynamic





# Metal Panel: Modern, Machined, Formed





# Glazing: Environmental Connectivity, Inviting, Openness



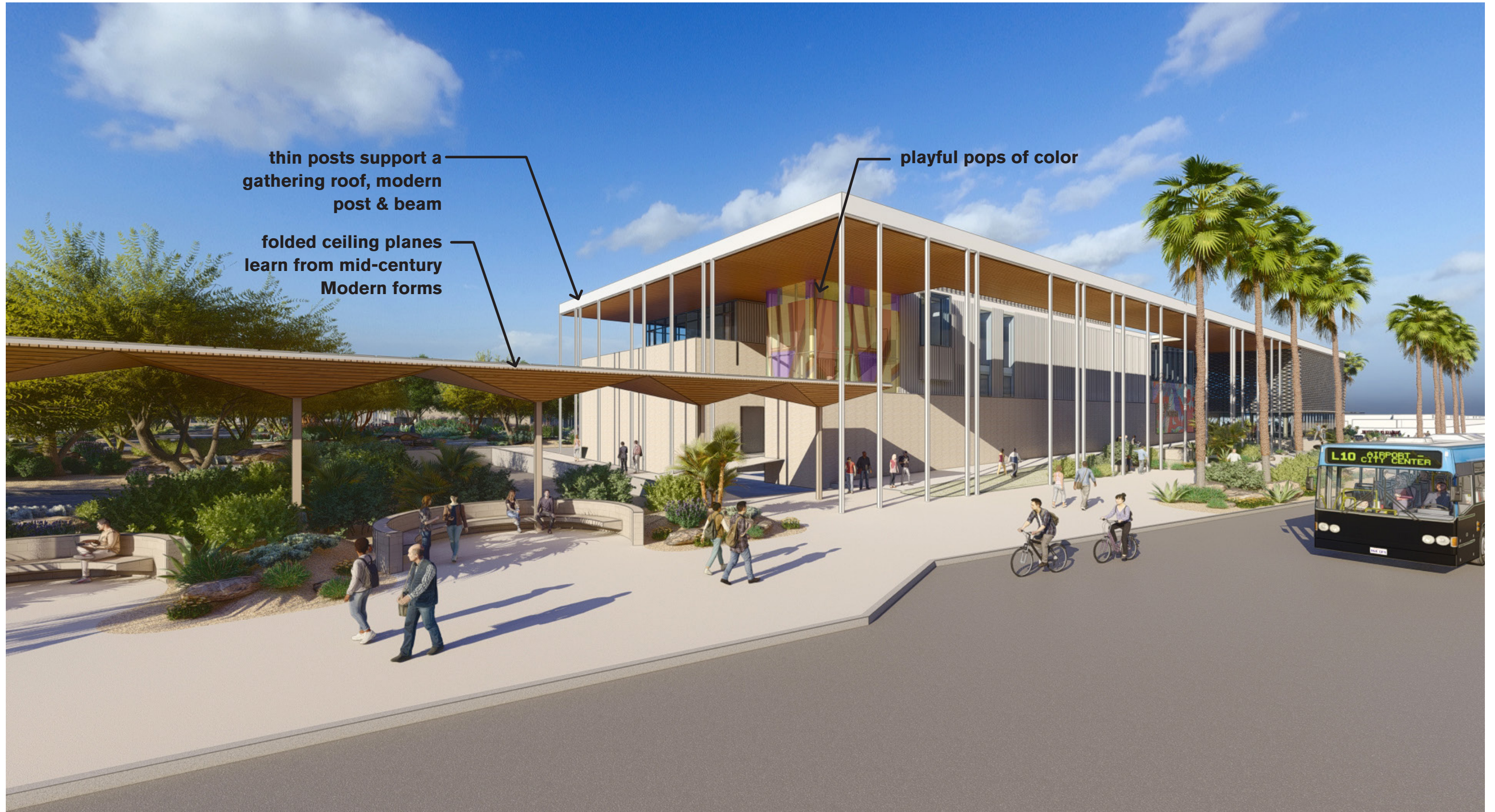


# Mass Timber: Modern Post & Beam, Warm, Sustainable





# Baristo Entry





# Welcome Lounge





# Baristo Entry





# Computer Lab





# Baristo/Farrell Corner (Daytime)





# Baristo/Farrell Corner (Evening)





# Farrell Drive



deep overhangs provide shade  
while maintaining view

public-facing art walls are playful, colorful,  
and embedded in Palm Springs culture



# Farrell Entry



public-facing art walls are playful, colorful, and embedded in Palm Springs culture

a view to the mountains



# Learning Oasis Aerial





# Learning Oasis



sweeping views to the  
mountains



# Outdoor Learning

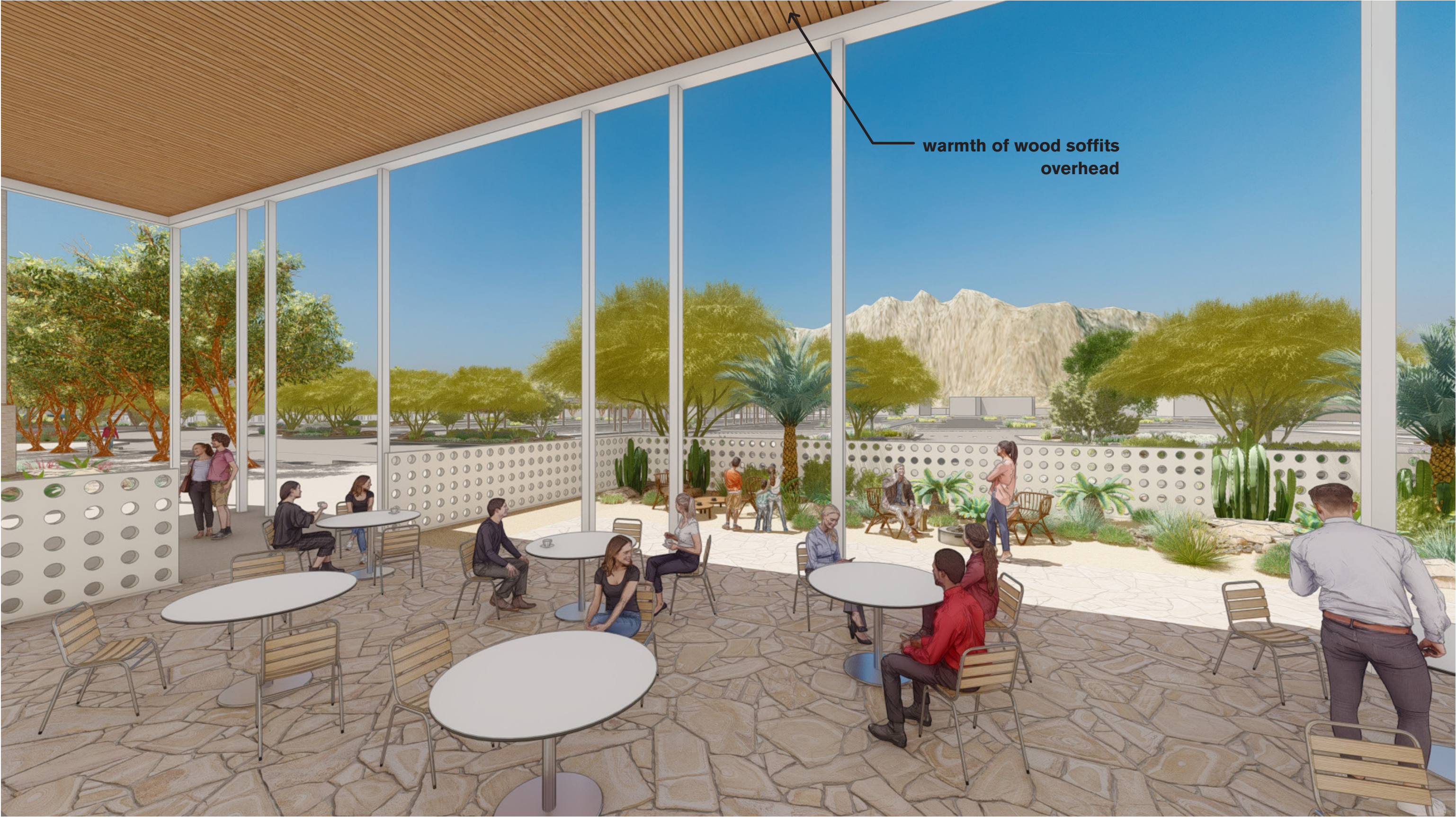


exposed timber and wood soffits  
provide warmth & display a  
sustainable approach to post and  
beam construction

shading in the landscape enhances  
indoor/outdoor connectivity and  
learning



# Outdoor Dining





Q&A