

PALM BEACH COUNTY
BOARD OF COUNTY COMMISSIONERS
AGENDA ITEM SUMMARY

GW/MGM 7-0
R-2024-0822

Meeting Date: July 2, 2024

☐ Consent ☒ Regular
☐ Workshop ☐ Public Hearing

Submitted By: Department of Airports

I. EXECUTIVE BRIEF

Motion and Title: Staff recommends motion to approve:

- (A) Amendment No. 3 to the Contract with AECOM Technical Services, Inc. (AECOM) for Consulting/Professional Services (Consulting Agreement) in the amount of \$1,629,647.26 for the performance of professional planning, design and engineering services related to the Palm Beach County Department of Airports Capital Improvement Program; and
- (B) A Budget Transfer in the amount of \$378,029 in the Airport's Improvement and Development Fund to provide budget for Amendment No. 3; including a transfer from Reserves in the amount of \$378,029.

Summary: The Consulting Agreement with AECOM was approved by the Board on July 11, 2023 (R-2023-0980) in the amount of \$2,126,629.78. Amendment No. 1 (R-2023-1654) and Amendment No. 2 (R-2024-0110) increased the total contract amount by \$3,293,814.70 and provided for various services, including, but not limited to, services for the following projects: Airport Stormwater Master Plans, Palm Beach International Airport (PBI) Turnage Boulevard Rehabilitation, PBI Holding Apron at Taxiway A and C, PBI Taxiway M, M1, and M2 Reconstruction and Palm Beach County Park Airport (LNA) Rotating Beacon Replacement. Approval of this Amendment No. 3 will increase contract amount by \$1,629,647.26 for a total contract amount of \$7,050,091.74. A detailed Contract History is included in Attachment 1. This Amendment No. 3 includes the following Consultant Service Authorizations: Task I Services – PBI Taxiway R Rehabilitation Construction Phase Services; LNA Runway 4-22 Slurry Seal Design; F45 Rotating Beacon Construction Phase Services; PBI Miscellaneous Drainage Repairs – Package 2 Construction Phase Services, PBI Parking Garage Repairs Construction Phase Services; PBI Taxiway C and M Connector Design; Miscellaneous Planning and Engineering Services, including independent fee estimates, updating maps and sketches, cost estimates and other similar services; and Task III Miscellaneous Services. Task III Miscellaneous Services are services that are not defined at the time of approval of an amendment to the Consulting Agreement and are approved pursuant to delegated authority in accordance with in accordance with PPM CW-F-050 by way of a separate task authorization. AECOM is a Dallas, Texas based firm; however, the majority of the work will be completed through its West Palm Beach and Tampa, Florida offices. A Disadvantaged Business Enterprise (DBE) goal of 20.9% was established for this Consulting Agreement. DBE participation for this Amendment No. 3 is 12.42%. The cumulative DBE participation, including this Amendment No. 3, is 22.64%. Pursuant to changes to Chapter 332, Florida Statutes, effective July 1, 2023, a governing body of a medium hub commercial service airport may not approve purchases of contractual services in excess of \$1,000,000 on a consent agenda. This Amendment No. 3 exceeds the threshold amount and must be approved on the regular agenda. Countywide (AH)

Background and Policy Issues: In order to carry out the Capital Improvement Program for the County's Airport System, the Department of Airports requires professional planning, design and engineering services.

Attachments:

1. Amendment No. 3 with AECOM, Inc. – 2 Originals
2. DBE Goal Information
3. Budget Transfer

Recommended By: [Signature]
Department Director

5/29/24
Date

Approved By: [Signature]
County Administrator

6/12/24
Date

II. FISCAL IMPACT ANALYSIS

A. Five Year Summary of Fiscal Impact:

Fiscal Years	<u>2024</u>	<u>2025</u>	<u>2026</u>	<u>2027</u>	<u>2028</u>
Capital Expenditures	\$ 1,629,648				
Operating Costs					
External Revenues (Grants)					
Program Income (County)					
In-Kind Match (County)					
NET FISCAL IMPACT	<u>\$1,629,648</u>				
# ADDITIONAL FTE POSITIONS (Cumulative)					

Is Item Included in Current Budget? Yes _____ No X
Does this item include the use of federal funds? Yes _____ No X
Does this item include the use of state funds? Yes X No _____

Budget Account No:

Fund	<u>4111</u>	Department	<u>121</u>	Unit	<u>A495</u>	Object	<u>6505</u>
	<u>4111</u>		<u>121</u>		<u>A455</u>		<u>6504</u>
	<u>4111</u>		<u>121</u>		<u>A485</u>		<u>6505</u>
	<u>4111</u>		<u>121</u>		<u>A428</u>		<u>6505</u>
	<u>4111</u>		<u>121</u>		<u>A422</u>		<u>6505</u>
	<u>4111</u>		<u>121</u>		<u>A471</u>		<u>6505</u>
	<u>4111</u>		<u>121</u>		<u>A107</u>		<u>6505</u>

Reporting Category _____

B. Recommended Sources of Funds/Summary of Fiscal Impact:

A Budget transfer in the Airport's Improvement and Development fund in the amount of \$378,029; including a transfer from Reserves in the amount of \$378,029. All units have funds in the current budget with the exception of unit A495, which will be included with the processing of the attached budget transfer.

Grant and PFC reimbursement will be determined as invoices are received.

C. Departmental Fiscal Review: _____

III. REVIEW COMMENTS

A. OFMB Fiscal and/or Contract Development and Control Comments:

Kim Minter 6/5/2024
OFMB AK 5/30

Frank Bruch 6/10/24
Contract Dev. and Control
AK 6/10/24

B. Legal Sufficiency:

Anne Helgen 6-12-24
Assistant County Attorney

C. Other Department Review:

Department Director

REVISED 11/17

(THIS SUMMARY IS NOT TO BE USED AS A BASIS FOR PAYMENT)

**AMENDMENT NO. 3 TO CONTRACT
BETWEEN
PALM BEACH COUNTY DEPARTMENT OF AIRPORTS
AND
AECOM TECHNICAL SERVICES, INC.
FOR
GENERAL CONSULTING SERVICES
AT
PALM BEACH COUNTY AIRPORTS**

R2024 0822 **JUL 02 2024**
This Amendment No. 3 to the Contract is made as of the 2nd day of July, 2024, by and between Palm Beach County, Florida (COUNTY) and AECOM TECHNICAL SERVICES, INC., a corporation authorized to do business in the State of Florida, hereinafter referred to as the CONSULTANT, whose Federal Tax I.D. number is 95-2661922.

WITNESSETH

WHEREAS, on July 11, 2023, the County entered into an Agreement (R2023-0980) with the Consultant for the Consultant to provide General Airport Consulting Services for the Palm Beach County Department of Airports, for a period of two (2) years, with three (3) one (1)-year renewal options, the exercise of which are within COUNTY'S sole control and discretion; and

WHEREAS, on November 7, 2023, the County entered into an Amendment No. 1 (R2023-1654) with the Consultant to provide additional professional services for the Department of Airports, Palm Beach County, in accordance with Article 26 of the original Agreement; and

WHEREAS, on January 23, 2024, the County entered into an Amendment No. 2 (R2024-0110) with the Consultant to provide additional professional services for the Department of Airports, Palm Beach County, in accordance with Article 26 of the original Agreement; and

WHEREAS, Article 26 of the Contract requires an amendment when the parties are able to define additional services and the parties have now defined those services;

NOW THEREFORE, in consideration of the mutual covenants herein contained, and such other good and valuable consideration, the receipt of which the parties hereby acknowledge, the parties agree to the following terms and conditions:

1. The parties hereby agree to amend the Contract to include the Scope of Services and Fees as outlined in Exhibit A. The total amount to be paid by the COUNTY to the CONSULTANT for professional services, including any out of pocket expenses, shall not exceed One Million Six Hundred and Twenty Nine Thousand Six Hundred and Forty-Seven Dollars and Twenty Six Cents (\$1,629,647.26) for the services in Amendment No. 3 to the original Contract.
2. Except as specifically amended herein, all other terms and conditions of the Contract shall remain in full force and effect.

{Remainder of page intentionally left blank.}

IN WITNESS WHEREOF, the parties have caused the Third Amendment to the Contract to be signed by the Mayor of the Board of County Commissioners and the Seal of said Board to be fixed hereto and attested by the Clerk of said board, and the CONSULTANT, AECOM TECHNICAL SERVICES, INC., has caused these presents to be signed in its corporate name by its duly authorized officer Andrew Kacer, Vice President, acting on behalf of said CONSULTANT, and the Seal of said CONSULTANT to be affixed hereto and attested by the Secretary of said CONSULTANT, the day and year first written above.

ATTEST:

JOSEPH ABRUZZO
CLERK OF THE CIRCUIT COURT
& COMPTROLLER

By: 
Deputy Clerk



R2024 0822 JUL 02 2024
PALM BEACH COUNTY, FLORIDA
BOARD OF COUNTY COMMISSIONERS

By: 
Maria Sachs, Mayor

WITNESS:

Martin,
Clint

Digitally signed by Martin, Clint
DN: cn=Martin, Clint, ou=USTPA1
email=Clint.Martin@aecom.com
Date: 2024.05.20 09:25:04 -0400

SIGNATURE

Clint Martin

Name (type or print)

CONSULTANT:

AECOM Technical Services, Inc.
COMPANY NAME

Andrew Kacer

Digitally signed by Andrew Kacer
DN: C=US, E=andy.kacer@aecom.com,
O=AECOM, CN=Andrew Kacer
Date: 2024.05.20 16:22:33 -0400

Signature

Andrew Kacer

Name (type or print)

Vice President

Title

APPROVED AS TO FORM
AND LEGAL SUFFICIENCY

BY: 
County Attorney

APPROVED AS TO TERMS
AND CONDITIONS

By: 
Department Director

May 16, 2024

Cindy Portnoy, PE
Deputy Director Planning & Development
Palm Beach County Department of Airports
846 Palm Beach International Airport
West Palm Beach, Florida 33406-1470

RE: Palm Beach County Department of Airports - AECOM
Amendment No. 3 to: Palm Beach County Contract Agreement R2023-0980

Cindy:

AECOM Technical Services, Inc. (AECOM) is pleased to submit five originals of Amendment No. 3 to our Palm Beach County Contract Agreement R2023-0980.

If you have any questions regarding this, please feel free to contact me.

Sincerely,
AECOM Technical Services, Inc.

Andrew Kacer

Andrew Kacer, PE
VP

May 16, 2024

Cindy Portnoy, PE
Deputy Director Planning & Development
Palm Beach County Department of Airports
846 Palm Beach International Airport
West Palm Beach, Florida 33406-1470

RE: Palm Beach County Department of Airports - AECOM
Amendment No. 3 to: Palm Beach County Contract Agreement R2023-0980

Cindy:

AECOM Technical Services, Inc. (AECOM) is pleased to submit five originals of Amendment No. 3 to our Palm Beach County Contract Agreement R2023-0980.

If you have any questions regarding this, please feel free to contact me.

Sincerely,
AECOM Technical Services, Inc.



Andrew Kacer, PE
VP

AMENDMENT NO. 3 INDEX

CERTIFICATE OF INSURANCE

EXHIBIT A: AMENDMENT NO. 3

EXHIBIT A-1	Task I-24-PBI-A-023 PBI Taxiway R Rehabilitation CM/CA/RPR Services
EXHIBIT A-2	Task I-24-LNA-A-024 LNA Runway 4-22 Slurry Seal
EXHIBIT A-3	Task I-24-F45-A-025 F45 Rotating Beacon Replacement CM/CA/RPR Services
EXHIBIT A-4	Task I-24-PBI-A-026 PBI Miscellaneous Drainage Repairs – Package 2 CM/CA/RPR Services
EXHIBIT A-5	Task I-24-PBI-A-027 PBI Repairs to Short-Term and Long- Term Parking Garage 3 CM/CA/RPR Services
EXHIBIT A-6	Task I-24-PBI-A-028 PBI Taxiway C and M Connector
EXHIBIT A-7	Task I-24-DOA-A-029 Miscellaneous Planning & Engineering Services

EXHIBIT B: DETAILED FEES, EXPENSES AND PAYMENTS

EXHIBIT B-I Summary of Fees

EXHIBIT B-II Schedule of Payments

EXHIBIT C: PROPOSED SCHEDULES

EXHIBIT D: DBE

CERTIFICATE OF INSURANCE

EXHIBIT A

This Amendment No. 3 is in accordance with the Contract (Agreement R2023-0980) for Consultant/Professional Services between Palm Beach County (COUNTY) and AECOM Technical Services, Inc. (CONSULTANT) dated July 11, 2023.

EXHIBIT A-1	Task I-24-PBI-A-023 PBI Taxiway R Rehabilitation CM/CA/RPR Services
EXHIBIT A-2	Task I-24-LNA-A-024 LNA Runway 4-22 Slurry Seal
EXHIBIT A-3	Task I-24-F45-A-025 F45 Rotating Beacon Replacement CM/CA/RPR Services
EXHIBIT A-4	Task I-24-PBI-A-026 PBI Miscellaneous Drainage Repairs – Package 2 CM/CA/RPR Services
EXHIBIT A-5	Task I-24-PBI-A-027 PBI Repairs to Short-Term and Long- Term Parking Garage 3 CM/CA/RPR Services
EXHIBIT A-6	Task I-24-PBI-A-028 PBI Taxiway C and M Connector
EXHIBIT A-7	Task I-24-DOA-A-029 Miscellaneous Planning & Engineering Services

EXHIBIT A-1

PALM BEACH DOA GENERAL CONSULTING SERVICES

EXHIBIT A-1

Miscellaneous Planning, Engineering and Construction Services

Palm Beach International Airport (PBI)

Task I-24-PBI-A-023 PBI Taxiway R Rehabilitation CM/CA/RPR Services

OVERVIEW

The Palm Beach DOA Department of Airports (DOA) has requested AECOM Technical Services, Inc. (CONSULTANT) provide Professional Engineering Services associated with Task I-24-PBI-A-023 PBI Taxiway R Rehabilitation CM/CA/RPR Services Project (Project) at Palm Beach International Airport (PBI). The scope of work for this Project includes providing Construction Management (CM), Construction Administration (CA), and Resident Project Representative (RPR) services for this Project.

PROJECT TEAM

The Project Team for these construction services will consist of:

Firm Name (CONSULTANT/SUBCONSULTANT)	Type of Services
AECOM Technical Services, Inc. (AECOM) (CONSULTANT)	CM/CA/RPR Services
Quantum Electrical Engineering (QEE) (SUBCONSULTANT)	Electrical CA Services
Tierra South Florida, Inc. (TSF) (SUBCONSULTANT)	Material Testing Services

PROJECT OBJECTIVE AND APPROACH

The objective of this Project is to rehabilitate Taxiway R and Taxiway Connectors R2, R3, and R4 and includes the removal of the direct access from the Southwest General Aviation Apron to Runway 10R-28L at Taxiway Connectors R3 and R4 and the construction of a new taxiway connector. This Project includes pavement removal, milling, earthwork, grading, paving, marking, signage, and electrical system updates.

Procurement shall consist of materials procurement and mobilization for a period of one-hundred twenty (120) Calendar Days from the Notice to Proceed (NTP). Project construction will be for a period of eighty (80) Calendar Days from the completion of the Procurement phase to substantial completion. Final acceptance shall be achieved within a period of Thirty (30) Calendar Days from the date of substantial completion.

Task I – CM/CA Services

AECOM will provide CM/CA Services throughout the scheduled construction of this Project and will include the following:

- A. Conferences and Meetings: Attend and facilitate meetings between Owner, Contractor(s), and Stakeholders, such as preconstruction meeting, kick-off meeting, progress meetings (a maximum four (4) progress meetings during procurement and six (6) bi-weekly construction progress meetings plus two (2) progress meetings during Final Close-out, job conferences and other project related meetings. Meeting Minutes for all formal meetings will be prepared by AECOM;
- B. Conformed Documents: Prepare (6) sets of Conformed Contract Plans and Specifications for Contract Execution. Prepare (6) sets of Executed Contract Documents for Construction, (3) for DOA, and (3) for the Contractor. Prepare a CD with Deliverables;
- C. Review Contractor's Maintenance of Traffic Plans;
- D. Review Contractors survey compared to design survey. Review as-builts for contractors in progress construction;
- E. Review Contractor's Critical Path Schedule;
- F. Review Contractor's Safety and Security Plans;
- G. Shop Drawings: Review and approve shop drawings prior to the beginning of construction activities. Develop and maintain a log that summarizes status of all shop drawings;
- H. Clarification of Contract Documents: Respond to various Requests for Information, Job memoranda, and other field prepared inquiries;
- I. QA Materials Testing: Provide materials testing for construction activities. This includes verifying that the base and subgrade compaction and materials meet FAA requirements. Facilitate meeting at onset of Project outlining material testing requirements, as outlined in the contract documents, with materials testing personnel, RPR, and the Contractor;
- J. CONSULTANT will review QA Materials Test Results and Laboratory Reports performed by responsible Subconsultant;
- K. Records: Maintain electronic files of correspondence, meeting minutes, shop drawings and Contract Documents including all work directive changes, addenda, change orders, field orders, additional drawings issued subsequent to the execution of the contract, clarifications and interpretations of the Contract Documents, progress reports and other project related documents.
- L. Payment Requests: Review applications for payment with quantities observed and forward recommendations to the DOA;
- M. AECOM will be responsible for preparation, processing, review and document control of Change Orders, Field Instructions, Field Bulletins, Construction Change Proposals and Directives, and Notices of Non-Compliance;
- N. Task Management and Coordination: Coordinate as needed with DOA Operations and other Project stakeholders;

- O. AECOM will review Contractor the Record Documents for completeness and obvious errors based on readily available information to the AECOM. The AECOM will provide comments prior to acceptance of the Contractor's Record Documents;
- P. AECOM will use all readily available information including the Contractor's As-builts to prepare Record Drawings for the completed work; and
- Q. Project Close-out Activities: AECOM will prepare Certificate of Substantial Completion, and other Project related Close-out activities.

Task II – RPR Services

As Part of this task, AECOM will perform the following services as part of RPR:

- A. AECOM will perform Pre-Construction Inspection and take photographs of the Project Site in collaboration with the Contractor and the DOA to document existing site conditions.
- B. CONSULTANT will review Contractor Daily Reports;
- C. RPR Services: CONSULTANT will provide full-time on-site observations of the quality and progress of the contractor's work in order to determine if the construction is proceeding in accordance with the Contract Documents. The RPR's efforts will be directed toward determining whether the constructed project conforms to the Contract Documents. These RPR Services will include developing Daily Reports, monitoring the Contractor's progress, serving as the Owner's liaison with the Contractor, and conducting on-site observations of the construction activities in progress to assist in determining if the work is being carried out in compliance with the Contract Documents;
- D. Periodic Inspection Services: AECOM construction manager/EOR will provide periodic inspections (bi-weekly inspections total of six (6) inspections);
- E. Interpretation and AECOM will review Guarantees, Warranties, Certifications, and Operation & Maintenance Manuals provided by the Contractor;
- F. Substantial and Final Completion: Conduct substantial and final completion inspection in the company of the DOA, and develop a substantial and final punch list of items in conjunction with Owner to be completed or corrected; and,
- G. Provide Construction Support Services to DOA during the performance of the Project.
- H. RPR Vehicle and Mileage

PROJECT SCHEDULE

AECOM is scheduled to complete this project within 230 Calendar Days following receipt of the Notice to Proceed.

PROJECT DELIVERABLES

Project Deliverables are as described in the above-mentioned Tasks I and II.

PROJECT ASSUMPTIONS

1. AECOM shall not be responsible for the means, methods, techniques, sequences, procedures of construction or selection of materials selected by the Contractor or the safety precautions and programs incident to the work of the Contractor. AECOM shall not guarantee the performance of the Contractor nor be responsible for the acts, errors, omissions, or the failure of the Contractor to perform the construction work in accordance with the Contract Documents.
2. AECOM does not have the authority to prepare and/or issue NOTAMs and as a result, this task will be the responsibility of the DOA.
3. AECOM will perform all services listed in this scope of services and it is expected that the DOA will perform services that are not listed.
4. In the event that the DOA and the AECOM believe it to be in the best interests of the Project that additional construction engineering inspection services, or additional services beyond what is provided in this scope of work be provided by the AECOM, a separate Task Authorization, which specifies the proposed scope of services to be performed, will be prepared.
5. AECOM understands and agrees that the DOA shall have the responsibility for the general administration of the construction contract. AECOM shall not have the authority or responsibility to accept or reject work done by the Contractor and is only responsible for providing recommendations to the DOA based on the available information.

Exhibit B
Labor/fee Estimate Summary - CONSULTANT (AECOM Technical Services, Inc.) - Task 1-24-PBIA-023 PBI Parkway R Rehabilitation CM/CA/PR Services

Task Description		Labor Estimate (Hours)						Fee Estimate (\$)		
		QC Reviewer	Senior Project Manager	Construction Manager	Project Engineer	Clerical	Total	Labor	Expenses	Total
Task 1.0 CAICN SERVICES (LUMP SUM + REIM.)										
A	Pre-Construction Conference	20	68	311	288	12	670	\$121,047.00	\$ -	\$121,047.00
B	Weekly Progress Meetings and Other Meetings (12 Meetings Total)		2	4	4		8	\$1,600		\$1,600
C	Prepare Conformered and Executed Contract Documents		8	24	24		66	\$12,756		\$12,756
B	Review Contractor's MOT Plans	8		6	16		36	\$7,362		\$7,362
C	Review Contractor's Critical Path Schedule		3		8		19	\$3,442		\$3,442
D	Review Contractor's Safety and Security Plans			8			8	\$1,608		\$1,608
E	Review Contractor's Survey compared to Design and in Progress Contractors As-Builts (Pavement Lifts)		4	24	40		68	\$11,024		\$11,024
F	Review Contractor's Safety and Security Plans		3	8			11	\$2,418		\$2,418
F	Process Review and Approve Shop Drawings and Submittals	4		50	40		98	\$17,194		\$17,194
G	Process Review and Approve Shop Drawings and Re-Submittals	4	4	25	20		53	\$9,609		\$9,609
H	Interpretation and Clarification of Contract Documents/RFI's		6	60	60		126	\$21,360		\$21,360
I	Establish and Maintain Project Records				6		12	\$1,974		\$1,974
J	Review Applications for Payment		6	16	8		30	\$5,860		\$5,860
K	Preparation of Change Orders, Notices of Non-Compliance etc.		6	40	20		66	\$12,220		\$12,220
L	Task management and Coordination		6	8		8	22	\$3,996		\$3,996
M	As Built Review			6	6		12	\$1,974		\$1,974
N	Prepare Record Drawings	4		8			24	\$4,088		\$4,088
O	Project Closeout			10			20	\$3,162		\$3,162
2.0	RPR SERVICES (T&M + REIM.)							\$197,504.00	\$ -	\$197,504.00
A	Pre-Construction Survey Validation, Inspection & Photographs	0	44	88	1,312	0	1,444	\$		\$
B	Review Contractor Survey Validation			8	40		48	\$6,728		\$6,728
B	Review Contractor Daily Reports			24			24	\$4,824		\$4,824
C	Full Time Inspections (14 weeks, 60 hours per week) plus add'l RPR 50%				1,260		1,260	\$161,280		\$161,280
D	Periodic Inspections (six (6) bi-weekly inspections)		24	24			48	\$11,304		\$11,304
E	Review guarantees, Warranties, Certifications, and O&M Manuals		4	4			8	\$1,884		\$1,884
F	Substantial and Final Completion Inspection		16	16			32	\$7,536		\$7,536
G	Construction Support Services			12	12		24	\$3,948		\$3,948
Total Fee - AECOM Technical Services, Inc.		0	112	399	1,550	12	2,123	\$319,551.00	\$ -	\$319,551.00

LS	\$133,187.00
TM	\$244,841.64
EXP	\$0
Total	\$378,028.64

	\$	59,477.64
--	----	-----------

\$378,028.64

Prepared by: AECOM Technical Services, Inc.

April 15, 2024

AECOM Technical Services, Inc.
Mr. Ryan Signorin, P.E.
7650 West Courtney Campbell Causeway
Tampa, FL 33607

Subject: Electrical Construction Administration (CA) Services Fee Proposal for the Palm Beach County Department of Airports (DOA) – Task I-23-PBI-A-001 PBI Taxiway R Rehabilitation Project.

Dear Ryan:

Quantum Electrical Engineering, Inc. (QUANTUM) is pleased to provide AECOM an electrical construction administration (CA) Services fee proposal for Palm Beach International Airport (PBI) Taxiway R Rehabilitation Project. The following tasks are included in our scope of services:

Task 1: Construction Administration Services

- Based on (80) days of on-site construction.
- Includes attending (1) virtual preconstruction kickoff meeting with DOA, AECOM and Contractor.
- Includes attending up to (12) virtual construction meetings with DOA, AECOM and Contractor.
- Includes electrical shop drawings submittals reviews & approvals.
- Includes requests for information (RFI) reviews & approvals.
- Includes change order reviews and comments.
- Includes review of the electrical portion of pay applications.
- Includes (12) periodic site observation visits up to (2) hours per visit. Quantities to be measured and recorded by AECOM RPR.
- Includes substantial and final completion inspections.
- Includes development of record drawings based on Contractor "Red Line Plan Mark-ups" and review of closeout documents.

Our proposed total Lump-Sum fee is

\$12,140.00

Sincerely,



Amy L. Champagne-Baker, PE

Palm Beach County
2755 Vista Parkway, Suite I-12
West Palm Beach, FL 33411
561.210.9224

www.QuantumElectricalEngineering.com

Broward County
5571 N. University Drive, Suite 101
Coral Springs, FL 33067
954.369.5810

President

Palm Beach County
2755 Vista Parkway, Suite I-12
West Palm Beach, FL 33411
561.210.9224

www.QuantumElectricalEngineering.com

Broward County
5571 N. University Drive, Suite 101
Coral Springs, FL 33067
954.369.5810

PALM BEACH COUNTY DEPARTMENT OF AIRPORTS - PBI TAXIWAY R REHABILITATION PROJECT CA SERVICES										
QUANTUM ELECTRICAL ENGINEERING, INC.										
SCOPE FEE SUMMARY										
FEE PROPOSAL ELECTRICAL CA to AE 4-15-2024										
	Rate	\$170.00 Proj. Mgr. Hours	\$150.00 Prof. Eng Hours	\$145.00 Proj. Eng Hours	\$85.00 CADD/Tech Hours	\$140.00 Field Eng. Hours	\$50.00 Clerical Hours	Total Hours	Expenses	TOTAL TASK COST
PHASE OF WORK										
TASK 1 Construction Services										
Pre-Construction Kickoff Meeting			1					1		\$150.00
Prepare Conformed Documents			1		1			2		\$235.00
Review and Approve Shop Drawings			10				2	12		\$1,600.00
On-Site Periodic Observation Visits (12 visits @ 2hrs ea)						24	4	28		\$3,560.00
Construction Coordination Meetings (up to 12 meetings)			12			12		24		\$3,480.00
Respond to Requests for Information (RFI)			2		4		2	8		\$740.00
Change Orders			1		1	1		3		\$375.00
Pay Applications						2		2		\$280.00
Substantial Completion						4	1	5		\$610.00
Final Completion			4				1	5		\$650.00
Review As-builts						1		1		\$140.00
Prepare Record Documents			1		2			3		\$320.00
Subtotal		0	32	0	8	44	10	94		\$12,140.00
Grand Total Hours		0	32	0	8	44	10	94		
Grand Total Labor Cost		\$0.00	\$4,800.00	\$0.00	\$680.00	\$6,160.00	\$500.00			\$12,140.00



April 17, 2024

AECOM
7650 W. Courtney Campbell Causeway
Tampa, Florida 33607
Attn: Ryan Signorin, P.E. | Civil Engineer, Aviation
Email: ryan.signorin@aecom.com
Phone: (610) 704-7719

Subject: Proposal for Construction Material Testing Services
PBIA – Taxiway R Rehabilitation
Palm Beach County, Florida
TSFGeo Proposal No. 2404-274

Dear Mr. Signorin:

As requested, Tierra South Florida, Inc. (TSFGeo) is pleased to submit this proposal for providing Construction Material Testing Services for the above-referenced project. Herein, we provide a general discussion of services that we understand will be required for this project, present our Schedule of Fees for such services.

PROJECT DESCRIPTION

Our proposal is based on preliminary information provided to this office. We understand that soil, concrete, asphalt monitoring and laboratory services are required for the taxiway R rehabilitation project, the scope includes asphalt pavement milling, concrete for cans, encasement, new asphalt pavement placement, and paving marking.

QUALIFICATIONS

TSFGeo is a recognized SBE consulting engineering and testing firm providing integrated services in several disciplines, including geotechnical engineering, construction services, materials engineering & testing, roof & pavement consulting, threshold services, and facilities consulting and engineering.

TSFGeo's Florida offices, located in West Palm Beach, Miami and Tampa, have over 40 engineers, inspectors, and support staff available to assist our clients. Our inspectors are ACI and AWS trained/certified in their respective disciplines, as required by building codes and industry standards. Our engineering staff includes registered professional engineers with significant construction experience in South Florida.

TSFGeo has earned a reputation for delivering quality service at reasonable costs. TSF has successfully completed thousands of projects for a variety of industries and organizations, including private, corporate and industrial clients, medical facilities, civilian and military agencies of the federal, state and local governments, colleges and universities, and local education agencies.

PROPOSED SCOPE OF SERVICES

We recognize that construction projects are built in the "real world" and that proposed schedules do not always work out. Therefore, we appreciate the importance of being able to respond to requests for our services on short notice and of working hours other than the normal schedule, including nighttime work and weekend work.

Based on the experience we have had in other projects like this and our understanding of the project requirements, we anticipate that the following testing services will be required during the design and construction phases of the project.

CONSTRUCTION MATERIAL TESTING SERVICES

- Inspection of asphalt plant supplier prior to starting construction;
- In-place density tests (using nuclear density methods) on embankment, utility backfill along with representative Proctor tests, Gradation, Atterberg Limits and Organic Content tests;
- In-place density tests per ASTM D1556/D6938 on compacted subgrade material, along with representative LBR tests, Gradation and Atterberg Limits tests;
- In-place density tests per ASTM D1556/D6938 on subbase and base materials, along with LBR tests, Gradation, Proctor tests, and Atterberg Limits
- Obtain aggregate base samples for base material and conduct sieve analysis to confirm gradation requirements per material specifications
- Compressive strength tests for miscellaneous structural concrete
- Provide senior engineering technician to assist with asphalt plant inspections and testing during initial test section;
- Provide senior engineering technician to assist with asphalt plant and field inspections and testing during production;
- Witness asphalt core drilling and delivery to asphalt plant;
- Compute percentage of material within specification limits (PWL) for each lot of paving;
- Issue daily reports in FAA format to Civil Designer

PROFESSIONAL SERVICES

- Professional Engineer registered in the State of Florida, to supervise field and laboratory activities, review and sign/seal daily laboratory reports.
- Administrative / Clerical Assistant to prepare and distribute reports.

CONSTRUCTION MATERIAL TESTING ESTIMATED FEES

The actual fees of our work will be highly dependent on the construction schedule. We propose to provide our work on a unit cost basis; based on the actual work performed and the unit fees attached to this proposal. Invoices will be submitted monthly for the portion of work completed. An estimate for each proposed task is indicated below:

Construction Material Testing: \$ 47,337.64

We appreciate the opportunity to offer our services for your project. Should you have any questions or need additional information, do not hesitate to contact me at (561) 687-8536.

Respectfully submitted,

TSFGeo

W. J. J. J. J.

Wilson Gonzalez
Construction Operations Manager



Stephen Hey
Construction Services Manager

Attachments: Unit Fee Schedule
General Notes – Authorization
General Conditions

**Fees Breakdown for
Construction Materials Testing Services**

ITEM	Quantity	Rate	Units	Extended
LABORATORY TESTING SERVICES				
Modified or Standard Proctor	4	\$ 120.00	test	\$ 480.00
LBR	1	\$ 350.00	test	\$ 350.00
Carbonate Content	1	\$ 120.00	test	\$ 120.00
Sieve Analysis	5	\$ 65.00	test	\$ 325.00
Organic Content	4	\$ 50.00	test	\$ 200.00
Atterberg Limits	5	\$ 90.00	test	\$ 450.00
Subtotal				\$ 1,925.00
CONCRETE / SOIL / ASPHALT				
Compression Testing of Concrete Cylinders-(set of 4)	10	\$ 150.00	set	\$ 1,500.00
Stand-by	20	\$ 65.00	hour	\$ 1,300.00
Nuclear Density Test -up to five (5) test per trip	40	\$ 140.00	trip	\$ 5,600.00
Additional Density tests (beyond 5 tests)	70	\$ 28.00	each	\$ 1,960.00
Asphalt Plant Inspector	144	\$ 101.88	hour	\$ 14,670.72
Asphalt Field Inspector	144	\$ 101.88	hour	\$ 14,670.72
Subtotal				\$ 39,701.44
PROFESSIONAL AND TECHNICAL SERVICES				
Principal Engineer	5	\$ 269.40	hour	\$ 1,347.00
Project Manager	10	\$ 253.06	hour	\$ 2,530.60
Senior Technician	20	\$ 91.68	hour	\$ 1,833.60
Subtotal				\$ 5,711.20
Total Estimated Fees				\$ 47,337.64

General Notes:

Please note the following procedures will apply to our services:

- 1- Field work hours for inspectors are Monday thru Friday, 8:00AM to 5:00PM.
- 2- We need 24 hours notice by contacting our office (561) 687-8536 prior to any site visit.
- 3- We can accommodate weekend inspections if necessary with a minimum of 48 hours notice.
- 4- Field work beyond 8 hours/day, night time and weekends (OT) will be billed at the regular rate times 1.5
- 5- Hours are billed from portal to portal in whole hour increment with a minimum of 3 hours per trip.
- 6- Stand-by time will be billed at hourly rate listed.

AUTHORIZATION

AUTHORIZED BY:	INVOICE TO:
Name:	Firm:
Title:	Name:
Date:	Address:
	Phone :

EXHIBIT A-2

PALM BEACH DOA GENERAL CONSULTING SERVICES

EXHIBIT A-2

Miscellaneous Planning, Engineering and Construction Services

Palm Beach County Park Airport (LNA)

Task I-24-LNA-A-024: LNA Runway 4-22 Slurry Seal

OVERVIEW

The Palm Beach Department of Airports (DOA) has requested AECOM Technical Services, Inc. (AECOM) to develop this Task I-24-LNA-A-024: LNA Runway 4-22 Slurry Seal Project (Project) at Palm Beach County Park Airport (LNA).

PROJECT TEAM

The Project Team will be:

Firm Name (CONSULTANT / SUBCONTRACTOR)	Type of Services
AECOM Technical Services, Inc. (AECOM) (CONSULTANT)	Project Management, Pavement Evaluation, Contract Document Development

PROJECT OBJECTIVE AND APPROACH

AECOM will evaluate the pavement condition, and develop corrective repairs, for Runway 4-22 at LNA, as shown in the following exhibit. From our preliminary investigations, it appears that Runway 4-22 at LNA is in fair condition and is a prime candidate for improvements, specifically crack sealing and seal coat. This Project will be included as part of a Bid Package that will include the Task III-24-F45-A-018: F45 Runway 9R-27L Slurry Seal and Task III-24-F45-A-018: F45 Runway 9R-27L Slurry Seal Projects.

CONTRACT DOCUMENTS (60%) (Phase 1)

The following elements are included as part of this task:

- a) Kick-off meeting will be held with DOA and Design Team prior to task beginning in order to discuss design objectives and goals; and
- b) 60% contract documents will be developed that describe existing conditions and pavement condition as well as proposed crack repairs, slurry sealing, marking, and construction safety and phasing plans.

During this phase, the 60% review meeting will be held with DOA and Design Team to evaluate the proposed plans and design intent. Any findings during this phase will be summarized and any changes to the project due to unforeseen conditions will be brought to the attention of the DOA.

Deliverables (Phase 1)

1. Kick-Off Meeting Minutes
2. 60% Design Documents
 - o Contract Drawings;
 - o Estimate of Probable Construction Cost;
 - o Table of Contents for Technical Specifications; and,
 - o Draft Construction Phasing and Safety Plan.
3. Meeting Minutes from the 60% Review Meeting.

CONTRACT DOCUMENTS (100%) (Phase 2)

Following the 60% Complete Contract Documents approval AECOM will develop "Final" 100% Complete Contract Documents from the approved 60% Complete Contract Documents. They will consist of the information contained in the 60% documents, as well as incorporate any comments provided and by DOA, Permit Agencies, or other authorized reviewers, as directed by DOA. The following elements are included as part of this task:

The 100% Contract Plans will include, but are not limited to:

1. Cover Sheet (100%).
2. Drawings Index / Summary of Quantities/General Notes (100%).
3. Staging and Haul Route Plan (100%).
4. Construction Phasing and Security Notes and Details (100%).
5. Existing Conditions Plans (100%).
6. Pavement Sealing Plans (100%).
7. Pavement Markings and Details (100%).

During this phase, the 100% review meeting will be held with DOA and Design Team to evaluate the proposed plans and design intent. Any findings during this phase will be summarized and any changes to the project due to unforeseen conditions will be brought to the attention of the DOA.

Deliverables (Phase 2)

AECOM will deliver the following major Deliverables for this Phase:

- a) 100% Contract Drawings;
- b) 100% Project Manual - Technical Specifications, Front Ends and FAA General Provisions;
- c) Construction Phasing and Safety Plan Report;
- d) 100% Project Cost Budget Estimates;
- e) 100% Project Schedule; and,
- f) Meeting minutes from the 100% Review Meeting;

BIDDING AND AWARD OF CONTRACT DOCUMENTS (Phase 3)

After authorization to proceed with the Bidding Phase, AECOM will assist the DOA in advertising for and obtaining bids for each separate prime contract for construction, materials, equipment and services; and, where applicable, maintain a record of prospective bidders to whom Bidding Documents have been issued, via the County's Vendor Self-Service Website. AECOM will support the DOA in conducting a pre-bid to share pertinent bidding and technical information and requirements with prospective bidders; issue addenda as appropriate to interpret and clarify or expand the Bidding Documents during the Bidding phase; and attend the bid opening, prepare bid tabulation sheets and assist DOA in evaluating bids or proposals and in assembling and awarding contracts for construction, materials, equipment and services.

3.1 Meetings

AECOM will attend the following meetings during this Phase:

- a. One (1) Pre-Bid Meeting; and,
- b. One (1) Bid Opening Meeting;

3.2 Deliverables

AECOM will deliver the following major Deliverables for this Phase:

- a. Four (4) sets of Bidding Documents;
- b. Electronic Bid Documents;
- c. Applicable Addenda during Bidding process;
- d. Pre-Bid Agenda and Meeting Minutes;
- e. Bid Tabulation of Bids; and,
- f. Bid Recommendation Letter for Award.

PROJECT SCHEDULE

AECOM anticipates to submit the 60% Contract Documents following 30 days after NTP. AECOM anticipates to submit the 100% Contract Documents following 60 days after NTP. AECOM anticipates to complete this project within 120 Calendar Days from NTP for the work specific to the AECOM for this Task. This schedule does not include expected DOA review times.

Deliverables: Deliverables are as described in the previous sections.

PROJECT ASSUMPTIONS

1. AECOM will perform all services listed in this scope of services and it is expected that the DOA will perform services that are not listed.
2. There will be no lighting, stormwater improvements, or items others than slurry and crack sealing included under this task.

Exhibit B
Labor/Fee Estimate Summary - CONSULTANT (AECOM Technical Services, Inc.) - Task I-24-LNA-A-024 LNA Runway 4-22 Slurry Seal

Billing Rate:	\$.	\$	236	\$	270	\$	201	\$	128	\$	-	\$	96
----------------------	----	---	----	-----	----	-----	----	-----	----	-----	----	---	----	----

Task Description			QC Reviewer	Senior Project Manager	Labor Estimate (Hours)			Clerical	Total	Fee Estimate (\$)									
					Design Manager	Project Engineer				Labor	Expenses	Total							
Task 124 LNA-A-024 LNA Runway 4.22 Slurry Seal CONTRACT DOCUMENTS (60% SUBMITTAL)	Total	0	6	20	45	95	0	8	176	\$39,116.00	\$0.00	\$39,116.00							
													K.O. Meeting	1	2	5	\$ 928	\$ -	\$ 928
													Data Collection (Pavement) plus Report	2	24	34	\$ 5,220	\$ -	\$ 5,220
													Cover Sheet (60%).			0	\$ -	\$ -	\$ -
													Drawings Index / Summary of Quantities/General Notes (60%).						
													Staging and Haul Route Plan (60%).	1	1	2	\$ 329	\$ -	\$ 329
													Construction Phasing and Security Plans, Notes and Details (60%).	2	6	10	\$ 1,710	\$ -	\$ 1,710
													Existing Conditions Plan (60%).	4	8	10	\$ 1,572	\$ -	\$ 1,572
													Pavement Sealing Plan (60%).	2	8	13	\$ 2,167	\$ -	\$ 2,167
													Pavement Markings Plans and Details (60%).	4	16	28	\$ 4,736	\$ -	\$ 4,736
60% Technical Specifications Outline 60% Construction Phasing and Safety Plan Report 60% Project Construction Cost Estimate 60% Project Schedule ISO 9001 – QA/QC Review 60% Review Meeting Task Management Cover Sheet (100%).	Total	0	6	13	21	40	0	5	85	\$16,747	\$0	\$16,747							
													Drawings Index / Summary of Quantities/General Notes (100%).						
													Staging and Haul Route Plan (100%).	2	2	4	\$ -	\$ -	\$ -
													Construction Phasing and Security Plans, Notes and Details (100%).	1	2	3	\$ 457	\$ -	\$ 457
													Existing Conditions Plan (100%).	3	8	13	\$ 2,167	\$ -	\$ 2,167
													Pavement Sealing Plan (100%).	1	8	13	\$ 2,094	\$ -	\$ 2,094
													Pavement Markings Plans and Details (100%).	4	8	10	\$ 1,436	\$ -	\$ 1,436
													100% Technical Specifications	1	2	4	\$ 1,729	\$ -	\$ 1,729
													100% Front End Specifications & FAA General Provisions	1	2	4	\$ 1,024	\$ -	\$ 1,024
													100% Construction Phasing and Safety Plan Report	1	2	5	\$ 928	\$ -	\$ 928
100% Project Construction Cost Estimate 100% Project Schedule ISO 9001 – QA/QC Review 100% Review Meeting Task Management CONTRACT DOCUMENTS (BIDDING AND AWARD)	Total	0	2	7	13	16	0	3	40	\$17,110	\$0	\$17,110							
													Bid Drawings	2	2	5	\$ 928	\$ -	\$ 928
													Bid Technical Specifications	1	2	3	\$ 558	\$ -	\$ 558
													Final Updates Bid Front End Specifications & FAA General Provisions	2	2	4	\$ 658	\$ -	\$ 658
													Bid Project Construction Cost Estimate	2	2	4	\$ 658	\$ -	\$ 658
													Submit Bid Documents to DOX	2	2	6	\$ 1,198	\$ -	\$ 1,198
													Pre-Bid Conference (Prepare for, facilitate, and prepare meeting minutes)	1	1	2	\$ 329	\$ -	\$ 329
													Addenda	2	2	2	\$ 1,626	\$ -	\$ 1,626
													Bid Recommendation Letter			2	\$ 256	\$ -	\$ 256
													Total Fee - AECOM Technical Services, Inc.	0	14	40	80	151	0

Subconsultant Fees		Lump Sum \$51,048.00
		T&M \$ -
		Expenses \$ -

Total Fee - Subconsultants	\$
-----------------------------------	-----------

GRAND TOTAL FEE - BASIC ENGINEERING SERVICES	\$51,048.00
--	-------------

Prepared by: AECOM Technical Services, Inc.

EXHIBIT A-3

PALM BEACH DOA GENERAL CONSULTING SERVICES

EXHIBIT A-3

Miscellaneous Architectural, Planning, Engineering and Construction Services

North Palm Beach County General Aviation Airport (F45)

Task I-24-F45-A-025 F45 Rotating Beacon Replacement CM/CA/RPR Services

OVERVIEW

The Palm Beach Department of Airports (DOA) has requested AECOM Technical Services, Inc. (AECOM) to develop this Task I-24-F45-A-025 F45 Rotating Beacon Replacement CM/CA/RPR Services Project (Project) at North Palm Beach County General Aviation Airport (F45). This scope of work for this Project includes providing Construction Management (CM), Construction Administration (CA), and Resident Project Representative (RPR) services.

PROJECT TEAM

The Project Team for the Project will consist of:

Firm Name (CONSULTANT / SUBCONTRACTOR)	Type of Services
AECOM Technical Services, Inc. (CONSULTANT)	CM/CA/RPR Services
Quantum Electrical Engineering, Inc. (QEE)	Electrical CA Services
Tierra South Florida, Inc. (Tierra)	Material Testing

PROJECT OBJECTIVE AND APPROACH

The objective of this Project is the replacement and relocation of the existing rotating beacon and tower. The rotating beacon replacement will include full demolition and removal of the existing beacon and tower and erection of a new rotating beacon tower and foundation.

Procurement shall consist of materials procurement and mobilization for a period of ninety (90) Calendar Days from the Notice to Proceed (NTP). Project construction will be for a period of forty-five (45) Calendar Days from the completion of the Procurement phase to substantial completion. Final acceptance shall be achieved within a period of thirty (30) Calendar Days from the date of substantial completion.

Task I – CM/CA Services

AECOM will provide CM/CA Services throughout the scheduled construction of this Project and will include the following:

- A. Conferences and Meetings: Attend and facilitate meetings between Owner, Contractor(s), and Stakeholders, such as preconstruction meeting, kick-off meeting, progress meetings (a maximum two (2) progress meetings during procurement and three (3) bi-weekly construction progress meetings plus two (2) progress meetings during Final Close-out, job conferences and other project related meetings. Meeting Minutes for all formal meetings will be prepared by AECOM;
- B. Conformed Documents: Prepare Conformed Contract Plans and Specifications for Contract Execution. Prepare Executed Contract Documents for Construction. Prepare a CD with Deliverables;
- C. Review Contractor's Maintenance of Traffic Plans;
- D. Review Contractor's Critical Path Schedule;
- E. Shop Drawings: Review and approve shop drawings prior to the beginning of construction activities. Develop and maintain a log that summarizes status of all shop drawings;
- F. Clarification of Contract Documents: Respond to various Requests for Information, Job memoranda, and other field prepared inquiries;
- G. Records: Maintain electronic files of correspondence, meeting minutes, shop drawings and Contract Documents including all work directive changes, addenda, change orders, field orders, additional drawings issued subsequent to the execution of the contract, clarifications and interpretations of the Contract Documents, progress reports and other project related documents.
- H. Payment Requests: Review applications for payment with quantities observed and forward recommendations to the DOA;
- I. AECOM will be responsible for preparation, processing, review and document control of Change Orders, Field Instructions, Field Bulletins, Construction Change Proposals and Directives, and Notices of Non-Compliance;
- J. Task Management and Coordination: Coordinate as needed with DOA Operations and other Project stakeholders;
- K. AECOM will review Contractor the Record Documents for completeness and obvious errors based on readily available information to the AECOM. The AECOM will provide comments prior to acceptance of the Contractor's Record Documents;
- L. AECOM will use all readily available information including the Contractor's As-builts to prepare Record Drawings for the completed work; and
- M. Project Close-out Activities: AECOM will prepare Certificate of Substantial Completion, and other Project related Close-out activities.

Task II – RPR Services

As Part of this task, AECOM will perform the following services as part of RPR:

- A. AECOM will perform Pre-Construction Inspection and take photographs of the Project Site in collaboration with the Contractor and the DOA to document existing site conditions.
- B. CONSULTANT will review Contractor Daily Reports;
- C. RPR Services: CONSULTANT will provide full-time on-site observations of the quality and progress of the contractor's work in order to determine if the construction is proceeding in accordance with the Contract Documents. The RPR's efforts will be directed toward determining whether the constructed

project conforms to the Contract Documents. These RPR Services will include developing Daily Reports, monitoring the Contractor's progress, serving as the Owner's liaison with the Contractor, and conducting on-site observations of the construction activities in progress to assist in determining if the work is being carried out in compliance with the Contract Documents;

- D. Periodic Inspection Services: AECOM construction manager and EOR will provide periodic inspections (bi-weekly inspections total of two (2) inspections);
- E. Interpretation and AECOM will review Guarantees, Warranties, Certifications, and Operation & Maintenance Manuals provided by the Contractor;
- F. Substantial and Final Completion: Conduct substantial and final completion inspection in the company of the DOA, and develop a substantial and final punch list of items in conjunction with Owner to be completed or corrected; and,
- G. Provide Construction Support Services to DOA during the performance of the Project.
- H. AECOM to provide monthly installed quantity verification memo and or tracking sheet for reviewing pay applications.

PROJECT SCHEDULE

AECOM is scheduled to complete this project within 165 Calendar Days following receipt of the Notice to Proceed.

PROJECT DELIVERABLES

Project Deliverables are as described in the above-mentioned Tasks I and II.

PROJECT ASSUMPTIONS

1. AECOM shall not be responsible for the means, methods, techniques, sequences, procedures of construction or selection of materials selected by the Contractor or the safety precautions and programs incident to the work of the Contractor. AECOM shall not guarantee the performance of the Contractor nor be responsible for the acts, errors, omissions, or the failure of the Contractor to perform the construction work in accordance with the Contract Documents.
2. AECOM does not have the authority to prepare and/or issue NOTAMs and as a result, this task will be the responsibility of the DOA.
3. AECOM will perform all services listed in this scope of services and it is expected that the DOA will perform services that are not listed.
4. In the event that the DOA and the AECOM believe it to be in the best interests of the Project that additional construction engineering inspection services, or additional services beyond what is provided in this scope of work be provided by the AECOM, a separate Task Authorization, which specifies the proposed scope of services to be performed, will be prepared.
5. AECOM understands and agrees that the DOA shall have the responsibility for the general administration of the construction contract. AECOM shall not have the authority or responsibility to accept or reject work done by the Contractor and is only responsible for providing recommendations to the DOA based on the available information.

Exhibit B

Exhibit D
Labor/Fee Estimate Summary - CONSULTANT (AECOM Technical Services, Inc.) - Task 1-24-F45-A-025 F45 Rotating Beacon Replacement CM/CARPR Services

[illegible]

Task Description		Resident Project Representative (RPR)	QC Reviewer	Senior Project Manager	Construction Manager	Senior Engineer	Project Engineer	Chemical	Total	Labor	Expenses	Fee Estimate (\$)
1.0	Task 1.24-F45-A026-F45 Rotating Beacon Replacement CMC/ARRP Services											
	Total	0	0	0	43	0	67	8	118	\$17,987	\$0	\$17,987
A	GMCA SERVICES (LUMP SUM + EXP)											
	Pre Construction Conference				2		2		4	\$ 658		\$ 658
A	Construction Team Meeting / Kick-Off Meeting				2		2		4	\$ 658		\$ 658
A	2 progress meetings during procurement, 3 bi-weekly construction progress meetings plus 2 progress meetings, Includes Meeting Minutes				7		7		14	\$ 2,303		\$ 2,303
B	Prepare Confirmed and Executed Contract Documents				2		8		10	\$ 1,426		\$ 1,426
C	Review Contractor's MOT Plans				1		2		3	\$ 457		\$ 457
D	Review Contractor's Critical Path Schedule				1		2		3	\$ 457		\$ 457
E	Process Review and Approve Shop Drawings and Submittals				2		8		12	\$ 1,828		\$ 1,828
E	Process Review and Approve Shop Drawings and Re-Submittals				2		4		6	\$ 914		\$ 914
F	Interpretation and Clarification of Contract Documents/RFI's				2		8		12	\$ 1,828		\$ 1,828
G	Establish and Maintain Project Records				2		2		4	\$ 658		\$ 658
H	Review Applications for Payment				2		4		2	\$ 402		\$ 402
I	Preparation of Change Orders, Notices of Non-Compliance etc....						4		8	\$ 1,316		\$ 1,316
J	Task management and Coordination				2		2	8	12	\$ 1,426		\$ 1,426
K	As Built Review				2		4		6	\$ 914		\$ 914
L	Prepare Record Drawings				2		8		10	\$ 1,426		\$ 1,426
M	Project Closeout				4		4		8	\$ 1,316		\$ 1,316
	Total	90	0	0	21	0	98	0	209	\$25,585	\$0	\$25,585
2.0	RPR SERVICES (TAM plus EXP)											
A	Pre-Construction Inspection & Photographs						4		4	\$ 512		\$ 512
B	Review Contractor Daily Reports				8				8	\$ 1,608		\$ 1,608
C	Full Time Inspections (45 calendar days 40 hours per week for 6 weeks times 75%)	90					90		180	\$ 20,340		\$ 20,340
D	Periodic Inspections (two (2) hour bi-weekly inspections)				4		4		8	\$ 1,316		\$ 1,316
E	Review Guarantees, Warranties, Certifications, and O&M Manuals				1				1	\$ 201		\$ 201
F	Substantial and Final Completion Inspection				4				4	\$ 804		\$ 804
G	Construction Support Services				4				4	\$ 804		\$ 804
	Total Fee - AECOM Technical Services, Inc.	90	0	0	84	0	185	8	327	\$ 43,572	\$ -	\$ 43,572

Subconsultant Fees Task 1.0	
1 Total Subconsultant Fee - Quantum Electrical Engineering (US)	\$ 6,935.00
2 Total Subconsultant Fee - Tierra (t&M)	\$ 7,006.50

Total Fee - Subconsultants	\$	13,941.50
-----------------------------------	-----------	------------------

GRAND TOTAL FEE - BASIC ENGINEERING SERVICES	\$	57,513.52
--	----	-----------

Prepared by: AECOM Technical Services, Inc.

LS	\$24,922.00
TM	\$32,591.50
EXP	\$0
Total	\$57,513.50

1000 JOURNAL OF CLIMATE

April 16, 2024

AECOM Technical Services, Inc.
Mr. Ryan Beckman, E.I.
110 East Broward Boulevard, Suite 700
Fort Lauderdale, FL 33301

Subject: Electrical Construction Administration (CA) Services Fee Proposal for the Palm Beach County Department of Airports (DOA) – F45 Rotating Beacon Replacement.

Dear Ryan:

Quantum Electrical Engineering, Inc. (QUANTUM) is pleased to provide AECOM an electrical construction administration (CA) Services fee proposal for North Palm Beach County General Aviation Airport (F45) Rotating Beacon Replacement. The following tasks are included in our scope of services:

Task 1: Construction Administration Services

- Based on (45) calendar days of construction.
- Includes attending (1) virtual preconstruction kickoff meeting with DOA, AECOM and Contractor.
- Includes attending up to (6) virtual construction meetings with DOA, AECOM and Contractor.
- Includes electrical shop drawings submittals reviews & approvals.
- Includes requests for information (RFI) reviews & approvals.
- Includes change order reviews and comments.
- Includes review of the electrical portion of pay applications.
- Includes (4) periodic site observation visits up to (3) hours per visit. Quantities to be measured and recorded by AECOM RPR.
- Includes substantial and final completion inspections.
- Includes development of record drawings based on Contractor "Red Line Plan Mark-ups" and review of closeout documents.

Our proposed total Lump-Sum fee is

\$6,935.00

Sincerely,



Amy L. Champagne-Baker, PE
President

Palm Beach County
2755 Vista Parkway, Suite I-12
West Palm Beach, FL 33411
561.210.9224

www.QuantumElectricalEngineering.com

Broward County
5571 N. University Drive, Suite 101
Coral Springs, FL 33067
954.369.5810

PALM BEACH COUNTY DEPARTMENT OF AIRPORTS - F45 ROTATING BEACON REPLACEMENT CA SERVICES													
QUANTUM ELECTRICAL ENGINEERING, INC.													
SCOPE FEE SUMMARY													
FEE PROPOSAL ELECTRICAL CA to AE 4-16-2024													
PHASE OF WORK	Rate	\$170.00	\$150.00	\$145.00	\$85.00	\$140.00	\$50.00	Total	Hours	Expenses	TOTAL		
TASK 1 Construction Services													
Pre-Construction Kickoff Meeting			1					1			\$150.00		
Prepare Confirmed Documents			1		1			2			\$235.00		
Review and Approve Shop Drawings			4				1	5			\$650.00		
On-Site Periodic Observation Visits (4 visits @ 3hrs ea)						12	2	14			\$1,780.00		
Construction Coordination Meetings (up to 6 meetings)			6			6		12			\$1,740.00		
Respond to Requests for Information (RFI)			2		2		1	5			\$520.00		
Change Orders			1		1	1		3			\$375.00		
Pay Applications						1		1			\$140.00		
Substantial Completion						3	1	4			\$470.00		
Final Completion			3				1	4			\$500.00		
Review As-builts						1		1			\$140.00		
Prepare Record Documents			1		1			2			\$235.00		
Subtotal		0	19	0	5	24	6	54			\$6,935.00		
Grand Total Hours		0	19	0	5	24	6	54					
Grand Total Labor Cost		\$0.00	\$2,850.00	\$0.00	\$425.00	\$3,360.00	\$300.00				\$6,935.00		



April 17, 2024

Mr. Ryan Beckman, E.I.
AECOM
110 East Broward Boulevard, Suite 700
Fort Lauderdale, Florida 33301
Email: ryan.beckman@aecom.com
Phone: 305-989-1518

**Re: Proposal for Construction Materials Testing Services
Rotating Beacon Replacement
North Palm Beach County General Aviation Airport
North Palm Beach, Florida
TSFGeo Proposal No.: 2404-268**

Dear Ryan:

TIERRA SOUTH FLORIDA (TSFGeo), Inc. is pleased to submit the proposal for providing Construction Material Testing Services for the above referenced project in Palm Beach County, Florida.

Our proposal is based on construction documents provided to this office. We understand that the project will include a new rotating beacon requiring soil and concrete testing.

The following scope of services will be required at this project:

- Density tests (using nuclear density methods) on backfill along with representative Proctor tests, gradation, Atterberg Limits and organic content tests.
- Concrete testing for rotating beacon foundation and miscellaneous.
- Provide Senior Engineering Technician to observe drilled shaft installation.

TSFGeo will provide experienced technical personnel to perform the necessary testing services in accordance with the project specifications. We propose to accomplish the scope of our services on a unit rate basis in accordance with the attached fee breakdown. TSFGeo's fees will be determined by the actual amount of technical time expended for this project and the amount of laboratory testing performed.

TSFGeo's laboratory and personnel fully comply with the standards of ASTM, ACI, AASHTO, AISC, AWS, FDOT, and FAA standards. Our laboratory maintains CMEC and FDOT certification and is staffed by experienced and certified field and laboratory personnel. In addition,

we are currently providing similar services in vicinity airports and are very familiar with the general site conditions as well as the local construction practices.

ESTIMATED FEES

We proposed to accomplish the above services on a unit rate schedule basis using the attached rates for an estimated budget amount of \$ **7,006.50**.

We appreciate the opportunity to offer our services for your project. Should you have any questions or need additional information, do not hesitate to contact me at (561) 687-8536.

Respectfully submitted,

TSFGeo



Stephen Hey
Constuction Services Manager



Wilson Gonzalez
Construction Operations Manager

Attachments: Unit Fee Schedule

**Fees Breakdown for
Construction Materials Testing Services**

I. Laboratory Testing Services

Concrete Tests (Min. 4 cylinders per set), 3 tests @ \$150.00/set	\$ 450.00
Moisture-Density (Modified Proctor Test), 2 tests @ \$120.00/each	\$ 240.00
Limerock Bearing Ratio Test 1 test @ \$350.00/test	\$ 350.00
Grain Size, 2 tests @ \$65.00/each	\$ 130.00
Atterberg Limits, 2 tests @ \$90.00/each	\$ 180.00
Organic Content Tests, 2 tests @ \$50.00/each	<u>\$ 100.00</u>
SUBTOTAL:	\$1,450.00

II. Construction Services-Soil and Concrete Testing

Nuclear Density Tests –2 trips (Minimum 5 tests per trip) @ \$140.00/trip	\$ 280.00
Additional Density Tests – beyond 5 per trip, 5 tests @ \$28.00/test	\$ 140.00
Engineering Technician – Density/Concrete testing ,Stand-by, Sample pickup, 30 hours @ \$67.92/hour	\$ 2,037.60
Senior Engineering Technician – Drilled Shaft Observation, 20 hours @ \$91.68/hour	<u>\$ 1,833.60</u>
SUBTOTAL:	\$ 4,291.20

III. Professional Services

Project Manager, 5 hours @ \$253.06/hour	<u>\$ 1,265.30</u>
SUBTOTAL:	\$ 1,265.30

TOTAL CONSTRUCTION MATERIALS TESTING SERVICES: \$ 7,006.50

General Notes:

Please note the following procedures will apply to our services:

- 1- Field work hours for inspectors are Monday thru Friday, 8:00AM to 5:00PM.
- 2- We need 24 hours' notice by contacting our office (561) 687-8536 prior to any site visit.
- 3- We can accommodate weekend inspections if necessary with a minimum of 48 hours' notice.
- 4- Field work beyond 8 hours/day, night time and weekends (OT) will be billed at the regular rate times 1.5
- 5- Stand-by time will be billed at hourly rate \$65.00/hour.

AUTHORIZATION

AUTHORIZED BY:	INVOICE TO:
Firm:	Firm:
Name:	Name:
Title:	Address:
Date:	Phone #:
	Fax #:

EXHIBIT A-4

PALM BEACH DOA GENERAL CONSULTING SERVICES

EXHIBIT A-4

Miscellaneous Architectural, Planning, Engineering and Construction Services

Palm Beach International Airport (PBI)

Task I-24-PBI-A-026 PBI Miscellaneous Drainage Repairs – Package 2 CM/CA/RPR Services

OVERVIEW

The Palm Beach Department of Airports (DOA) has requested AECOM Technical Services, Inc. (AECOM) to develop this Task I-24-PBI-A-026 PBI Miscellaneous Drainage Repairs – Package 2 CM/CA/RPR Project (Project) at Palm Beach International Airport (PBI). This scope of work for this Project includes providing Construction Management (CM), Construction Administration (CA), and Resident Project Representative (RPR) services.

PROJECT TEAM

The Project Team for the Project will consist of:

Firm Name (CONSULTANT / SUBCONTRACTOR)	Type of Services
AECOM Technical Services, Inc. (CONSULTANT)	CA/CM/RPR Services
Tierra South Florida, Inc. (Tierra)	Material Testing

PROJECT OBJECTIVE AND APPROACH

This Project addresses drainage concerns at various locations throughout PBI. The areas that will be repaired as part of this Project are included in the Base Bid (Work Area 11), Additive Alternate No. 1 (Work Areas 4 and 5B), and Additive Alternate No. 2 (Work Areas 1, 2, 3, and 10). The work in these areas consist of stabilizing eroded areas, fabricform revetment, rip rap, removing and replacing two sand-cement headwalls, replacing one mitered end section, and replacing a portion of 18" RCP.

Procurement shall consist of materials procurement and mobilization for a period of thirty (30) Calendar Days from the Notice to Proceed (NTP). Project construction will be for a period of one hundred and thirty-two (132) Calendar Days from the completion of the Procurement phase to substantial completion. Final acceptance shall be achieved within a period of thirty (30) Calendar Days from the date of substantial completion.

Task I – CA Services

AECOM will provide CA Services throughout the scheduled construction of this Project and will include the following:

- A. Conferences and Meetings: Attend meetings between Owner, Contractor(s), and Stakeholders, such as preconstruction meeting, kick-off meeting, progress meetings (a maximum two (2) progress meetings during procurement and nine (9) bi-weekly construction progress meetings plus two (2) progress meetings during Final Close-out, job conferences and other project related meetings. AECOM shall attend for support and provide logs (Submittal's, RFI's, etc.);
- B. Re-Bid Project: AECOM supported the Re-Bid of the Project which consisted of updating the Program Manual, Plans, Bid and Add Alternates, Cost Estimate, Pre-bid Meeting, and issuing Addenda.
- C. Conformed Documents: Prepare Conformed Contract Plans and Specifications for Contract Execution. Prepare Executed Contract Documents for Construction. Prepare a CD with Deliverables;
- D. Review Contractor's Maintenance of Traffic Plans;
- E. Review Contractor's Critical Path Schedule;
- F. Shop Drawings: Review and approve shop drawings prior to the beginning of construction activities. Develop and maintain a log that summarizes status of all shop drawings;
- G. Clarification of Contract Documents: Respond to various Requests for Information, Job memoranda, and other field prepared inquiries;
- H. Records: Maintain electronic files of correspondence, meeting minutes, shop drawings and Contract Documents including all work directive changes, addenda, change orders, field orders, additional drawings issued subsequent to the execution of the contract, clarifications and interpretations of the Contract Documents, progress reports and other project related documents.
- I. Payment Requests: Review applications for payment with quantities observed and forward recommendations to the DOA;
- J. AECOM will be responsible for preparation, processing, review and document control of Change Orders, Field Instructions, Field Bulletins, Construction Change Proposals and Directives, and Notices of Non-Compliance;
- K. Task Management and Coordination: Coordinate as needed with DOA Operations and other Project stakeholders;
- L. AECOM will review Contractor the Record Documents for completeness and obvious errors based on readily available information to the AECOM. The AECOM will provide comments prior to acceptance of the Contractor's Record Documents;
- M. AECOM will use all readily available information including the Contractor's As-builts to prepare Record Drawings for the completed work; and
- N. Project Close-out Activities: AECOM will prepare Certificate of Substantial Completion, and other Project related Close-out activities.

Task II – RPR Services

As Part of this task, AECOM will perform the following services as part of RPR:

- A. AECOM will perform Pre-Construction Inspection and take photographs of the Project Site in collaboration with the Contractor and the DOA to document existing site conditions.
- B. CONSULTANT will review Contractor Daily Reports;
- C. RPR Services: CONSULTANT will provide part-time (50% of the 18 week construction duration) on-site observations of the quality and progress of the contractor's work in-order to determine if the construction is proceeding in accordance with the Contract Documents. If additional RPR work effort is required, AECOM will submit a supplemental scope and fee for that work effort. The RPR's efforts will be directed toward determining whether the constructed project conforms to the Contract Documents. These RPR Services will include developing Daily Reports, monitoring the Contractor's progress, serving as the Owner's liaison with the Contractor, and conducting on-site observations of the construction activities in progress to assist in determining if the work is being carried out in compliance with the Contract Documents;
- D. Periodic Inspection Services: AECOM construction manager and EOR will provide periodic inspections (bi-weekly inspections total of nine (9) bi-weekly inspections);
- E. Interpretation and AECOM will review Guarantees, Warranties, Certifications, and Operation & Maintenance Manuals provided by the Contractor;
- F. Substantial and Final Completion: Conduct substantial and final completion inspection in the company of the DOA, and develop a substantial and final punch list of items in conjunction with Owner to be completed or corrected; and,
- G. Provide Construction Support Services to DOA during the performance of the Project.

PROJECT SCHEDULE

AECOM is scheduled to complete this project within 192 Calendar Days following receipt of the Notice to Proceed.

PROJECT DELIVERABLES

Project Deliverables are as described in the above-mentioned Tasks I and II.

PROJECT ASSUMPTIONS

- 1. AECOM shall not be responsible for the means, methods, techniques, sequences, procedures of construction or selection of materials selected by the Contractor or the safety precautions and programs incident to the work of the Contractor. AECOM shall not guarantee the performance of the Contractor nor be responsible for the acts, errors, omissions, or the failure of the Contractor to perform the construction work in accordance with the Contract Documents.
- 2. AECOM does not have the authority to prepare and/or issue NOTAMs and as a result, this task will be the responsibility of the DOA.
- 3. AECOM will perform all services listed in this scope of services and it is expected that the DOA will perform services that are not listed.
- 4. In the event that the DOA and the AECOM believe it to be in the best interests of the Project that additional construction engineering inspection services, or additional services beyond what is provided in this scope of work be provided by the AECOM, a separate Task

Authorization, which specifies the proposed scope of services to be performed, will be prepared.

5. AECOM understands and agrees that the DOA shall have the responsibility for the general administration of the construction contract. AECOM shall not have the authority or responsibility to accept or reject work done by the Contractor and is only responsible for providing recommendations to the DOA based on the available information.

Billing Rate:												



April 17, 2024

Mr. Ryan Beckman, E.I.
AECOM
110 East Broward Boulevard, Suite 700
Fort Lauderdale, Florida 33301
Email: ryan.beckman@aecom.com
Phone: 305-989-1518

Re: **Proposal for Construction Materials Testing Services
Miscellaneous Drainage Repairs – Package 2
Palm Beach International Airport
West Palm Beach, Florida
TSF Proposal No.: 2404-269**

Dear Ryan:

TIERRA SOUTH FLORIDA (TSFGeo), Inc. is pleased to submit the proposal for providing Construction Material Testing Services for the above referenced project in Palm Beach County, Florida.

Our proposal is based on construction documentation provided to this office. We understand that the project will include miscellaneous drainage repairs. Work elements include but not limited to placement of new riprap, fabriform revetment, and a new concrete headwall.

The following scope of services will be required at this project:

- Density tests (using nuclear density methods) on backfill along with representative Proctor tests, gradation, Atterberg Limits and organic content tests.
- Concrete testing for headwall, and miscellaneous.

TSFGeo will provide experienced technical personnel to perform the necessary testing services in accordance with the project specifications. We propose to accomplish the scope of our services on a unit rate basis in accordance with the attached fee breakdown. TSFGeo's fees will be determined by the actual amount of technical time expended for this project and the amount of laboratory testing performed.

TSFGeo's laboratory and personnel fully comply with the standards of ASTM, ACI, AASHTO, AISC, AWS, FDOT, and FAA standards. Our laboratory maintains CMEC and FDOT certification and is staffed by experienced and certified field and laboratory personnel. In addition,

we are currently providing similar services in vicinity airports and are very familiar with the general site conditions as well as the local construction practices.

ESTIMATED COST

We proposed to accomplish the above services on a rate schedule basis using the attached rates for an estimated amount of **\$11,201.00**

We appreciate the opportunity to offer our services for your project. Should you have any questions or need additional information, do not hesitate to contact me at (561) 687-8536.

Respectfully submitted,

TSFGeo



Stephen Hey
Construction Services Manager



Wilson Gonzalez
Construction Operations Manager

Attachments: Unit Fee Schedule

**Fees Breakdown for
Construction Materials Testing Services**

I. Laboratory Testing Services

Concrete Tests (Min. 4 Cylinders per set), 5 tests @ \$150.00/set	\$ 750.00
Moisture-Density (Modified Proctor Test), 6 tests @ \$120.00/each	\$ 720.00
Grain Size, 6 tests @ \$65.00/each	\$ 390.00
Atterberg Limits, 6 tests @ \$90.00/each	\$ 540.00
Organic Content Tests, 6 tests @ \$50.00/each	<u>\$ 300.00</u>

SUBTOTAL: \$2,700.00

II. Construction Services-Soil and Concrete Testing

Engineering Technician –20 trips (Minimum 5 tests per trip) @ \$140.00/trip	\$ 2,800.00
Additional Density Tests – beyond 5 per trip, 15 tests @ \$28.00/test	\$ 420.00
Senior Engineering Technician – 30 hours @ \$91.68/hour	<u>\$ 2,750.40</u>

SUBTOTAL: \$ 5,970.40

III. Professional Services

Project Manager, 10 hours @ \$253.06/hour	<u>\$ 2,530.60</u>
---	--------------------

SUBTOTAL: \$ 2,530.60

TOTAL CONSTRUCTION MATERIALS TESTING SERVICES: \$ 11,201.00

EXHIBIT A-5

PALM BEACH DOA GENERAL CONSULTING SERVICES

EXHIBIT A-5

Miscellaneous Architectural, Planning, Engineering and Construction Services

Palm Beach International Airport (PBI)

**Task I-24-PBI-A-027 PBI Repairs to Short-Term and Long-Term Parking Garage 3
CM/CA/RPR Services**

OVERVIEW

The Palm Beach Department of Airports (DOA) has requested AECOM Technical Services, Inc. (AECOM) to develop this Task I-24-PBI-A-027 PBI Repairs to Short-Term and Long-Term Parking Garage 3 CM/CA/RPR Services Project (Project) at Palm Beach International Airport (PBI). This scope of work for this Project includes providing Construction Administration (CA), Construction Management (CM), and Resident Project Representative (RPR) services.

PROJECT TEAM

The Project Team for the Project will consist of:

Firm Name (CONSULTANT / SUBCONTRACTOR)	Type of Services
AECOM Technical Services, Inc. (CONSULTANT)	CM/CA/RPR Services
Tierra South Florida, Inc. (Tierra)	Permitting and Threshold Inspection Services

PROJECT OBJECTIVE AND APPROACH

The scope of work for the Base Bid includes the installation of a new pavement surface coating to the Short-Term Parking Garage Level 4. The scope of work for Additive Bid 1 includes repairs to the Long-Term Parking Garage 3 structure, joint sealant and expansion joint repairs, cleaning and sealing the exterior structure, structural repairs to the garage stairways, and new wayfinding signage. The scope of work for Additive Bid 2 includes cleaning the interior wall surfaces in Long-Term Parking Garage 3 and maintenance repairs on the garage stairways.

Procurement shall consist of materials procurement and mobilization for a period of sixty (60) Calendar Days from the Notice to Proceed (NTP). Project construction will be for a period of three hundred and sixty (360) Calendar Days from the completion of the Procurement phase to substantial completion. Final acceptance shall be achieved within a period of thirty (30) Calendar Days from the date of substantial completion.

Task I – CM/CA Services

AECOM will provide CM/CA Services throughout the scheduled construction of this Project and will include the following:

- A. Conferences and Meetings: Attend and facilitate meetings between Owner, Contractor(s), and Stakeholders, such as preconstruction meeting, kick-off meeting, progress meetings (a maximum two (2) progress meetings during procurement and twenty-five (25) bi-weekly construction progress meetings plus two (2) progress meetings during Final Close-out, job conferences and other project related meetings. Meeting Minutes for all formal meetings will be prepared by AECOM;
- B. Conformed Documents: Prepare Conformed Contract Plans and Specifications for Contract Execution. Prepare Executed Contract Documents for Construction. Prepare a CD with Deliverables;
- C. Review Contractor's Maintenance of Traffic Plans;
- D. Review Contractor's Critical Path Schedule;
- E. Shop Drawings: Review and approve shop drawings prior to the beginning of construction activities. Develop and maintain a log that summarizes status of all shop drawings;
- F. Clarification of Contract Documents: Respond to various Requests for Information, Job memoranda, and other field prepared inquiries;
- G. Records: Maintain electronic files of correspondence, meeting minutes, shop drawings and Contract Documents including all work directive changes, addenda, change orders, field orders, additional drawings issued subsequent to the execution of the contract, clarifications and interpretations of the Contract Documents, progress reports and other project related documents.
- H. Payment Requests: Review applications for payment with quantities observed and forward recommendations to the DOA;
- I. AECOM will be responsible for preparation, processing, review and document control of Change Orders, Field Instructions, Field Bulletins, Construction Change Proposals and Directives, and Notices of Non-Compliance;
- J. Task Management and Coordination: Coordinate as needed with DOA Operations and other Project stakeholders;
- K. AECOM will review Contractor the Record Documents for completeness and obvious errors based on readily available information to the AECOM. The AECOM will provide comments prior to acceptance of the Contractor's Record Documents;
- L. AECOM will use all readily available information including the Contractor's As-builts to prepare Record Drawings for the completed work; and
- M. Project Close-out Activities: AECOM will prepare Certificate of Substantial Completion, and other Project related Close-out activities.

Task II – RPR Services

As Part of this task, AECOM will perform the following services as part of RPR:

- A. AECOM will perform Pre-Construction Inspection and take photographs of the Project Site in collaboration with the Contractor and the DOA to document existing site conditions.
- B. CONSULTANT will review Contractor Daily Reports;
- C. RPR Services: CONSULTANT will provide full-time on-site observations of the quality and progress of the contractor's work in order to determine if the construction is proceeding in accordance with the Contract Documents. The RPR's efforts will be directed toward determining whether the constructed project conforms to the Contract Documents. These RPR Services will include developing Daily Reports, monitoring the Contractor's progress, serving as the Owner's liaison with the Contractor, and conducting on-site observations of the construction activities in progress to assist in determining if the work is being carried out in compliance with the Contract Documents;
- D. Periodic Inspection Services: AECOM construction manager and EOR will provide periodic inspections (bi-weekly inspections total of twenty six (26) inspections);
- E. Interpretation and AECOM will review Guarantees, Warranties, Certifications, and Operation & Maintenance Manuals provided by the Contractor;
- F. Substantial and Final Completion: Conduct substantial and final completion inspection in the company of the DOA, and develop a substantial and final punch list of items in conjunction with Owner to be completed or corrected; and,
- G. Provide Construction Support Services to DOA during the performance of the Project.

PROJECT SCHEDULE

AECOM is scheduled to complete this project within 450 Calendar Days following receipt of the Notice to Proceed.

PROJECT DELIVERABLES

Project Deliverables are as described in the above-mentioned Tasks I and II.

PROJECT ASSUMPTIONS

- 1. AECOM shall not be responsible for the means, methods, techniques, sequences, procedures of construction or selection of materials selected by the Contractor or the safety precautions and programs incident to the work of the Contractor. AECOM shall not guarantee the performance of the Contractor nor be responsible for the acts, errors, omissions, or the failure of the Contractor to perform the construction work in accordance with the Contract Documents.
- 2. AECOM does not have the authority to prepare and/or issue NOTAMs and as a result, this task will be the responsibility of the DOA.
- 3. AECOM will perform all services listed in this scope of services and it is expected that the DOA will perform services that are not listed.

4. In the event that the DOA and the AECOM believe it to be in the best interests of the Project that additional construction engineering inspection services, or additional services beyond what is provided in this scope of work be provided by the AECOM, a separate Task Authorization, which specifies the proposed scope of services to be performed, will be prepared.
5. AECOM understands and agrees that the DOA shall have the responsibility for the general administration of the construction contract. AECOM shall not have the authority or responsibility to accept or reject work done by the Contractor and is only responsible for providing recommendations to the DOA based on the available information.

Exhibit B

Lab/Free Estimate Summary - CONSULTANT (AECOM Technical Services, Inc.) - Task 1-24-PBI-A-027 PBI Repairs to Short-Term and Long-Term Parking Garage 3 CM/CWRPR Services

100

Task Description		Residual Project Representative (RPR)	QC Reviewer	Senior Project Manager	Construction Manager	Senior Engineer	Project Engineer	Clinical	Total	Labor	Expenses	Fee Estimate (\$)
Task 124-PBA-027 PBI Repairs to Short-Term and Long-Term Parking Garage 3 CMC/ARPR Services												
1.0	CMCA SERVICES (LUMP SUM + EXP.)	0	0	28	156	270	105	12	571	\$111,558	\$0	\$111,558
A	Pre-Construction Conference			2	4	4	2	4	8	\$ 1,600		\$ 1,600
A	Construction Team Meeting / Kick-Off Meeting			2	2				6	\$ 1,198		\$ 1,198
B	2 progress meetings during procurement, 25 bi-weekly construction progress meetings plus 2 progress meetings, includes Meeting Minutes				58	58	29		145	\$ 27,840		\$ 27,840
B	Prepare Confirmed and Executed Contract Documents				2		8		10	\$ 1,428		\$ 1,428
C	Review Contractor's MOT Plans			2	4		4		10	\$ 1,856		\$ 1,856
D	Review Contractor's Critical Path Schedule				4		2		6	\$ 1,060		\$ 1,060
E	Process Review and Approve Shop Drawings and Submittals			8	16	64			88	\$ 19,136		\$ 19,136
E	Process Review and Approve Shop Drawings and Re-Submittals			4	8	32			44	\$ 9,568		\$ 9,568
F	Interpretation and Clarification of Contract Documents/RFI's			2	12	60	24		98	\$ 18,924		\$ 18,924
G	Establish and Maintain Project Records				2		2		4	\$ 658		\$ 658
H	Review Applications for Payment				8				8	\$ 1,608		\$ 1,608
I	Preparation of Change Orders, Notices of Non-Compliance etc....			4	24	48	16		92	\$ 18,272		\$ 18,272
J	Task management and Coordination			4				12	20	\$ 3,036		\$ 3,036
K	As Built Review				2		4		6	\$ 914		\$ 914
L	Prepare Record Drawings				2	8	8		18	\$ 3,148		\$ 3,148
M	Project Closeout						4		8	\$ 1,316		\$ 1,316
2.0	RPR SERVICES (T&M plus EXP.)	0	0	0	138	104	2,044	0	2,288	\$311,730	\$0	\$311,730
A	Pre-Construction Inspection & Photographs					4	4		4	\$ 512		\$ 512
B	Review Contractor Daily Reports				16				16	\$ 3,216		\$ 3,216
C	Full Time Inspections (360 calendar days 40 hours per week for 51 weeks)					2,040	2,040		2,040	\$ 261,120		\$ 261,120
D	Periodic Inspections (twenty six (26) hour bi-weekly inspections)				104	104			208	\$ 43,264		\$ 43,264
E	Review Guarantees, Warranties, Certifications, and O&M Manuals				2		2		2	\$ 402		\$ 402
F	Substantial and Final Completion Inspection								8	\$ 1,608		\$ 1,608
G	Construction Support Services				8				8	\$ 1,608		\$ 1,608
Total Fee - AECOM Technical Services, Inc.		0	0	28	294	374	2,149	12	2,857	\$ 423,268	\$ -	\$ 423,268

LS	\$111,558.00
TM	\$379,910.28
EXP	\$0

Downloaded from <http://ajph.org/> on November 10, 2015

Prepared by: AECOM Technical Services, Inc.



April 17, 2024

Mr. Ryan Beckman, E.I.
AECOM
110 East Broward Boulevard, Suite 700
Fort Lauderdale, Florida 33301
Email: ryan.beckman@aecom.com
Phone: 305-989-1518

Subject: Proposal for Threshold Inspection Services
PBIA Parking Garage 3 -Repairs
West Palm Beach, Florida
TSF Proposal No. 2404-273

Dear Saul:

As requested, TSFGEO is pleased to submit this proposal for providing Threshold Inspection Services for the above referenced project. This proposal presents a general discussion of services that we understand will be required for this project and our Schedule of Fees for such services.

PROJECT DESCRIPTION

Based on information provided to us, we understand that the proposed construction will include repairs to the Long Term and Short Term Parking Garages at PBIA. The repairs will include partial depth concrete repair, epoxy injection of cracks, routing and sealing of cracks.

PROPOSED SCOPE OF SERVICES

We recognize that construction projects are built in the "real world" and that proposed schedules do not always work out. Therefore, we appreciate the importance of being able to respond to requests for our services on short notice and of working hours other than the normal schedule, including nighttime work and weekend work.

Based on our understanding of the project requirements, we anticipate that the following testing services will be required during the design and construction phases of the project.

THRESHOLD INSPECTION SERVICES

- Observe preparation of areas to receive concrete/grout repairs.
- Observe preparation of areas to receive epoxy injection repairs.
- Observe reinforcing steel placement.
- Observe core holes and surface preparation at new drain locations.

PROFESSIONAL SERVICES

- Provide periodic reports documenting laboratory tests and field data and submit to appropriate parties;
- Provide Senior Engineer to review daily reports, coordination, consultation and meetings.

Please note that our services do not include supervision or direction of the actual work. Job site safety will be the sole responsibility of the contractor. Construction defects not related to structural works, such as water penetration (in roofing, windows, doors, louvers), and building finishings (interior, exterior), stairs (railings, surface finish, tread/riser ratio) are not part of our scope of work. TSFGEO cannot be responsible for non-structural defects that could lead to structural elements failures down the road.

ESTIMATED FEE


The fees for our services will be highly dependent on the construction schedule. We propose to provide our services on a unit cost basis; based on the actual services performed and the unit fees attached to this proposal. Invoices will be submitted monthly for the portion of work completed. We also understand a new contract will be in place at the end of July 2023. This proposal covers the period after July 2023, and has been prepared with the new contract rates. An estimate for the proposed services is indicated below:

- Threshold Inspections \$ 68,180.28

We appreciate the opportunity to offer our services for your project. Should you have any questions or need additional information, do not hesitate to contact me at (561) 687-8536.

Respectfully submitted,
TSFGeo


Stephen Hey
Construction Services Manager


Wilson Gonzalez
Construction Operations Manager

Attachments: Fee Breakdown Schedule
General Notes
Authorization
General Terms and Conditions

Fees Breakdown for Threshold Inspection Services

ITEM	Quantity	Rate	Units	Extended
INSPECTIONS				
Theshold Inspector	650	\$ 101.88	hour	\$ 66,222.00
PERMITTING SUPPORT				
Threshold Inspector	6	\$ 101.88	hour	\$ 611.28
Professional and Technical Services*				\$ -
Principal Engineer	5	\$ 269.40	hour	\$ 1,347.00
Subtotal				\$ 68,180.28
Total Estimated Fees				\$ 68,180.28

General Notes:

Please note the following procedures will apply to our services:

- 1- Field work hours for inspectors are Monday thru Friday, 8:00AM to 5:00PM.
- 2- We need 24 hours notice by contacting our office (561) 687-8536 prior to any site visit.
- 3- We can accommodate weekend inspections if necessary with a minimum of 48 hours notice.
- 4- Field work beyond 8 hours/day, night time and weekends (OT) will be billed at the regular rate times 1.5
- 5- Stand-by time will be billed at hourly rate listed.

AUTHORIZATION

AUTHORIZED BY:	INVOICE TO:
Firm:	Firm:
Name:	Name:
Title:	Address:
Date:	Phone #:
	Fax #:

EXHIBIT A-6

PALM BEACH DOA GENERAL CONSULTING SERVICES

EXHIBIT A-6

Miscellaneous Planning, Engineering and Construction Services

Palm Beach International Airport (PBI) Task I-24-PBI-A-028 PBI Taxiway C and M Connector

OVERVIEW

The Palm Beach DOA Department of Airports (DOA) has requested AECOM Technical Services, Inc. (CONSULTANT) provide Professional Engineering Services associated with Task I-24-PBI-A-028 PBI Taxiway C and M Connector Project (Project) at Palm Beach International Airport (PBI). The Project consists of the construction of a new TDG 5 taxiway connector between Taxiway C and Taxiway M as shown below in Figure 1. The work will include construction of full depth asphalt taxiway pavement, asphalt shoulders, electrical modifications including new edge lights and signage, pavement markings, and site grading/drainage improvements as required.

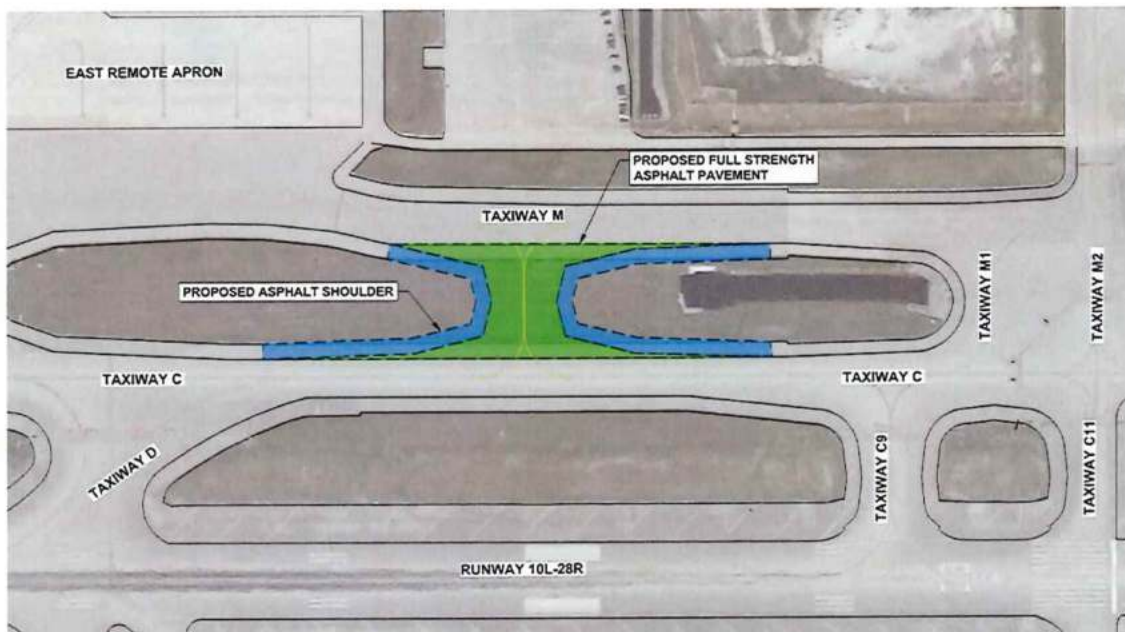


Figure 1: New taxiway connector between Taxiway C and Taxiway M

The CONSULTANT will prepare Construction Documents (CDs) for design services of the Project. The construction of the taxiway connector shall be in accordance with Federal Aviation Administration (FAA), Florida Department of Transportation (FDOT),

and SFWMD requirements. The project geometric design and layout will be based on FAA AC 150/5300-13B Airport Design Standards. Construction specifications will be based on FAA AC 150/5370-10H, Standards for Specifying Construction of Airports and applicable FDOT Design Standards. The Construction Safety and Phasing Plan (CSPP) will be prepared in compliance with FAA AC 150/5370-2G, Operational Safety on Airports During Construction.

In addition to the overall design of the taxiway connector, the CONSULTANT will provide basic services including site grading/drainage design, construction phasing, survey, utility locations, and geotechnical engineering services. A brief overview of pertinent tasks to be performed by the CONSULTANT for the Project include:

1. Attend One (1) DOA Design Kick-Off Meeting and prepare meeting minutes;
2. Coordinate One (1) Internal Design Team Kick-Off meeting;
3. Coordinate Data Collection, Records Research and Review of As-Built information;
4. Field Coordination Meetings (at beginning of survey and throughout geotechnical services);
5. Perform project site investigations: Existing Conditions Analysis for Pavement/Electrical/Drainage Systems, Utility Locations and Clearances, and accompany Geotechnical Investigations;
6. Prepare PowerPoint Presentations, sketches and agenda for meetings (as applicable);
7. Validate Program Cost Estimate;
8. Facilitate Design Coordination meetings via conference calls and webinars;
9. Develop Construction Safety and Phasing Plans (CSPPs);
10. Prepare 60%, 90% and 100% Contract Documents, General Provisions, Technical Specifications, Drawings, Project Schedule, Engineer's Report, Cost Estimates, Submit Permitting Documents to SFWMD, Engineer's Report, and CSPP Report;
11. Attend Four (4) DOA Submittal Review Meetings. Prepare meeting agenda and meeting minutes (60%, 90%, and 100% Contract Documents);
12. Task Management/Task Administration – Coordination with DOA, FAA, DOA Operations, Permitting Agencies (if applicable), Subconsultants, and other stakeholders;
13. Provide Quality Assurance for all deliverables;
14. Task Management;
15. Task Coordination (FAA, ATCT, DOA Operations, SFWMD, Other Consultants, and other interested project stakeholders); and,
16. Construction Administration Services and Resident Project Representative Services will not be included in this task authorization.

Project Team

The Project Team for Basic Services and Special Services, and the respective type of services to be provided by the Team are shown below:

Firm Name (CONSULTANT/SUBCONSULTANT)	Type of Services
AECOM Technical Services, Inc. (AECOM) (CONSULTANT)	Project Management; Civil and Drainage Design/Permitting
Brown and Phillips (B&P) (SUBCONSULTANT)	Topographic Survey / Utility Locates
Quantum Electrical Engineering (QEE) (SUBCONSULTANT)	Electrical Engineering
Tierra South Florida (TSF) (SUBCONSULTANT)	Geotechnical Investigations

SCOPE OF SERVICES

Our scope of services will follow one distinct phase: Phases 1, consisting of of three (3) design subphases: sixty percent (60%) design completion of the Contract Documents (Phase 1A); ninety percent (90%) design completion (Phase 1B); and final design completion (100%) of the Contract Documents (Phase 1C).

A brief definition for each of the Phases included in the scope of services is provided below:

PHASE 1A -CONSULTANT will develop the Contract Documents to a predetermined completion milestone (60% of completion). CONSULTANT will develop the Program Costs and prepare Schedule/Phasing Plans.

PHASE 1B -CONSULTANT will develop the Contract Documents to 90% completion to allow the Project to be reviewed and preliminarily submitted for applicable permitting agencies. CONSULTANT will update Program Costs, Schedule and Phasing Plans.

PHASE 1C -CONSULTANT will complete the Contract Documents to 100% completion to allow the Project to be permitted, bid, and constructed. CONSULTANT will prepare the Final Program Cost Estimate, Schedule and Phasing Plans.

PHASE 2 -CONSULTANT will assist the DOA in obtaining Bids and in the Award of a Construction Contract, as required.

The following paragraphs summarize the CONSULTANT'S Basic Services for Phases 1 and 2:

1.0 PHASE 1A – 60% CONTRACT DOCUMENTS

The CONSULTANT will prepare a presentation/agenda for the Project's Kick Off meeting. All key stakeholders will be invited to this meeting: DOA/Airport Staff, CONSULTANT'S key staff, and Subconsultants. The Kick-Off meeting's discussion items will include: stakeholder identifications, project limits, safety and operational impacts, permitting, design services, design standards, schedule, budget and construction constraints. The CONSULTANT will prepare and distribute the meeting minutes which will highlight outstanding action items and meeting details. Immediately following the Kick-Off Meeting, field investigative services associated with the survey and geotechnical services will begin. All airfield investigative services will be coordinated with DOA Operations prior to beginning work.

The CONSULTANT will prepare the following as a part of Phase 1A:

1.1. Documents Data Collection and Records Research

The Consultant will review existing DOA designs, as-builts, record drawings, and information regarding the proposed Project components and gather information for use during subsequent design phases. All pertinent record documents associated with Taxiways C and M and adjacent areas will be obtained from the DOA records database.

1.2. Field Investigative Services and Design Development

1.2.1 Site Evaluation

The AECOM Team will perform two site visits to evaluate the existing conditions and collect data. Our presence on site will include at the beginning of the topographic survey and throughout the geotechnical investigations. The AECOM Team will evaluate the existing condition of the pavement, lighting, drainage infrastructure, and any other above ground infrastructure within the project limits.

1.2.2 Topographic Survey and Utility Locates

B&P will perform the surveying services for this task. The major components of the survey are the development of a topographic survey within the area shown on **Attachment B** of the attached B&P detailed scope and fee. The topographic survey will obtain data including: pavement, utilities, and drainage structures. The points on paved surfaces will be taken at a 25' x 25' grid, the off-pavement data will be collected on a 50' x 50' grid, with all grade breaks or other visible surface anomalies picked up. B&P will also perform utility clearances for the geotechnical data collection. See the attached B&P scope and fee for a more detailed description of the B&P services.

1.2.3 Geotechnical/subsurface investigations

TSF will perform the geotechnical/subsurface investigations services for this contract, specifically tailored to the rehabilitation of Taxiway R. The major components of the geotechnical/subsurface investigations services include the following items:

- Perform four (4) SPT borings to a depth of 10 feet to determine the existing subsurface conditions;
- Perform two (2) California bearing ratio (CBR) tests;
- Perform eight (8) asphalt pavement cores, to identify existing asphalt pavement thickness and base depth.

1.2.4 Pavement Condition Evaluation

AECOM will review the existing full-strength taxiway and shoulder pavement condition within the project limits. This analysis will include an onsite pavement condition evaluation and review of the latest PBI Airfield Pavement Management System Study, for comparison with our findings. Based on this evaluation, we will determine the final location of the geotechnical data acquisition.

1.2.5 Geometry

AECOM will evaluate the required taxiway geometry for geometric conformance to the latest FAA Standards, utilizing the Design Aircraft as shown in the latest PBI ALP. Any recommended or proposed changes will be coordinated with PBI, prior to moving forward.

1.2.6 Airfield Electrical

QEE will perform electrical design services for this contract. The scope of work will include new airfield lighting and signage for the new taxiway connector. This includes the modifications of edge lights and signage for Taxiway C and Taxiway M. The ALCMS Graphics will be updated to reflect the new taxiway connector and update the existing taxiway designations as required.

1.2.7 Grading and Drainage Design/Permitting

AECOM will prepare the pavement grading and drainage plans in accordance with the latest FAA standards. The existing drainage system will be examined and evaluated for conformance with the standards. Additionally, any modification or additions/reductions to the system, based on the proposed geometry will be evaluated to ensure that there are no negative hydraulic impacts to the adjacent system. A permit modification is anticipated and will be obtained through the SFWMD to incorporate any changes to the contributing impervious area based on geometry revisions.

1.3. The 60% Plans will include, but are not limited to:

1. Cover Sheet (60%).
2. Drawings Index (60%).
3. Summary of Quantities/General Notes (60%).
4. Haul Route, Staging, and Storage Area Plan (60%).
5. Overall Phasing Plan (60%).
6. Individual Work Area Phasing Plans (60%).
7. Phasing Plans, Details and Maintenance of Traffic (60%).
8. Survey Control Plan (60%).
9. Existing Conditions Plan (60%).
10. Demolition Plans (60%).
11. Geometry Plans (60%).
12. Typical Sections (60%).
13. Marking Plans (60%).
14. Marking Details (60%).
15. Grading Plans (60%).
16. Taxiway Profile Plan (60%).
17. Pavement Elevation Plan (60%).
18. Drainage Plans (60%).
19. Drainage Details (60%).
20. Stormwater Pollution Prevention Plans (60%).
21. Stormwater Pollution Prevention Notes and Details (60%).
22. Miscellaneous Details (60%).
23. Cross Section Layout Plan (60%).
24. Electrical Demolition Plans (60%).
25. Electrical Plans (60%).
26. Electrical Circuiting Plans (60%).
27. Airfield Sign Schedule (60%).
28. Misc. Electrical Details (60%).

The CONSULTANT will prepare and submit an Engineer's Design Report covering all findings and recommendations developed throughout the 60% Design Development Phase including a Construction Schedule and estimate of probable Project Program Costs thru Construction.

1.4. Meetings

The CONSULTANT will attend the following meetings during this Phase:

- a. Design K.O. Meeting;
- b. Team Coordination Meetings;
- c. Regulatory permitting agencies meetings, as applicable; and
- d. One (1) DOA Review Submittal Meeting.

The CONSULTANT will submit pdf copies of all Contract Documents required under this Phase 1A for review comments and approval by the DOA.

1.5. Deliverables

The CONSULTANT will deliver the following major Deliverables (pdf):

- a. K.O. Meeting Minutes;
- b. Topographic Survey;
- c. Geotechnical Report;
- d. Meeting minutes from all applicable meetings of this Phase;
- e. Regulatory permitting agencies documentation;
- f. 60% Drawings;
- g. 60% Technical Specifications;
- h. 60% Construction Safety and Phasing Plan;
- i. 60% Project Cost Estimates;
- j. 60% Project Schedule; and,
- k. 60% Engineer's Report containing Geotechnical Report.

1.6. Schedule

The anticipated duration of this phase is 60 calendar days.

2.0 PHASE 1B - 90% SUBMITTAL

Following the 60% Complete Contract Documents approval the CONSULTANT will develop 90% Complete Contract Documents from the approved 60% Complete Contract Documents. These 90% documents will consist of the information contained in the 60% documents, as well as incorporate any comments provided by the DOA, Permit Agencies, or other authorized reviewers, as directed by DOA.

2.1 The 90% Plans will include, but are not limited to:

1. Cover Sheet (90%).
2. Drawings Index (90%).
3. Summary of Quantities/General Notes (90%).
4. Haul Route, Staging, and Storage Area Plan (90%).
5. Overall Phasing Plan (90%).
6. Individual Work Area Phasing Plans (90%).
7. Construction Phasing and Security Notes and Details (90%).
8. Survey Control Plan (90%).
9. Existing Conditions Plan (90%).
10. Demolition Plan (90%).
11. Geometry Plans (90%).
12. Typical Sections (90%).
13. Marking Plans (90%).
14. Marking Details (90%).
15. Grading Plans (90%).
16. Taxiway Profile Plan (90%).
17. Pavement Elevation Plan (90%).
18. Drainage Plans (90%).
19. Drainage Details (90%).

20. Stormwater Pollution Prevention Plans (90%).
21. Stormwater Pollution Prevention Notes and Details (90%).
22. Miscellaneous Details (90%).
23. Cross Section Layout Plan (90%).
24. Cross Sections (90%).
25. Electrical Demolition Plans (90%).
26. Electrical Plans (90%).
27. Electrical Circuiting Plans (90%).
28. Airfield Sign Schedule (90%).
29. Misc. Electrical Details (90%).

2.2 Meetings

The CONSULTANT will attend the following meetings during this Phase:

- a. Team Coordination Meetings, as applicable;
- b. Regulatory permitting agencies meetings, as applicable; and,
- c. One (1) DOA Review Submittal Meeting.

The CONSULTANT will submit pdf copies of all Contract Documents required under this Phase 1B for review comments and approval by the DOA.

2.3 Deliverables

- a. Meeting minutes from all applicable meetings of this Phase;
- b. Response to DOA 60% Design review comments;
- c. Regulatory permitting agencies documentation;
- d. 90% Contract Drawings;
- e. 90% Project Manual - Technical Specifications, Front End and FAA General Provisions;
- f. Construction Safety and Phasing Plan;
- g. 90% Project Cost Estimates;
- h. 90% Project Schedule; and,
- i. 90% Engineer's Report.

2.4 Schedule

The anticipated duration of this phase is 45 calendar days.

3.0 PHASE 1C - 100% SUBMITTAL

Following the 90% Complete Contract Documents approval the CONSULTANT will develop "Final" 100% Complete Contract Documents from the approved 90% Complete Contract Documents. They will consist of the information contained in the 90% documents, as well as incorporate any comments provided and by DOA, Permit Agencies, or other authorized reviewers, as directed by DOA.

3.1 The 100% Plans will include, but are not limited to:

1. Cover Sheet (100%).
2. Drawings Index (100%).
3. Summary of Quantities/General Notes (100%).
4. Haul Route, Staging, and Storage Area Plan (100%).
5. Overall Phasing Plan (100%).
6. Individual Work Area Phasing Plans (100%).
7. Construction Phasing and Security Notes and Details (100%).
8. Survey Control Plan (100%).
9. Existing Conditions Plan (100%).
10. Demolition Plan (100%).
11. Geometry Plans (100%).
12. Typical Sections (100%).
13. Marking Plans (100%).
14. Marking Details (100%).
15. Grading Plans (100%).
16. Taxiway Profile Plan (100%).
17. Pavement Elevation Plan (100%).
18. Drainage Plans (100%).
19. Drainage Details (100%).
20. Stormwater Pollution Prevention Plans (100%).
21. Stormwater Pollution Prevention Notes and Details (100%).
22. Miscellaneous Details (100%).
23. Cross Section Layout Plan (100%).
24. Cross Sections (100%).
25. Electrical Demolition Plans (100%).
26. Electrical Plans (100%).
27. Electrical Circuited Plans (100%).
28. Airfield Sign Schedule (100%).
29. Misc. Electrical Details (100%).

In providing opinions of probable construction costs, the DOA understands that the CONSULTANT has no control over costs or the price of labor, equipment or materials, or over the Contractor's method of pricing, and that the opinions of probable construction costs provided herein shall be on the basis of the CONSULTANT'S qualifications and experience. The CONSULTANT makes no warranty, expressed or implied, as to the accuracy of such opinions as compared to bid or actual costs.

3.2 Meetings

The CONSULTANT will attend the following meetings during this Phase:

- a. Team Co-ordination Meetings, as applicable;
- b. Regulatory permitting agencies meetings, as applicable; and,
- c. One (1) DOA Review Submittal Meeting.

3.3 Deliverables

The CONSULTANT will deliver the following major Deliverables for this Phase:

- a. Meeting minutes from all applicable meetings of this Phase;
- b. Response to DOA 90% Design review comments;
- c. Regulatory permitting agencies documentation;
- d. 100% Contract Drawings;
- e. 100% Project Manual - Technical Specifications, Front End and FAA General Provisions;
- f. Construction Safety and Phasing Plan;
- g. 100% Project Cost Estimates;
- h. 100% Project Schedule; and,
- i. 100% Engineer's Report.

3.4 Schedule

The anticipated duration of this phase is 30 calendar days.

4.0 PHASE 4 - BIDDING AND AWARD OF CONTRACT

Bid & Award Services

After authorization to proceed with the Bidding Phase, CONSULTANT will assist the DOA in advertising for and obtaining bids via the County's Vendor Self-Service Website. CONSULTANT will support the DOA in conducting a pre-bid conference to share pertinent bidding and technical information and requirements with prospective bidders; issue addenda as appropriate to interpret and clarify or expand the Bidding Documents during the Bidding phase; and attend the bid opening, prepare bid tabulation sheets and assist DOA in evaluating bids or proposals and in assembling and awarding contracts for construction, materials, equipment and services.

4.1 Deliverables

- a. PDF copy of the Bid Documents
- b. Pre-Bid Conference Agenda and Meeting Minutes
- c. Addenda as required during the bid process
- e. Bid Tabulation
- f. Bid Recommendation Letter

4.2 Schedule

The anticipated duration of this phase is 45 calendar days.

Assumptions:

1. The box culvert to the East of the proposed Taxiway C and M Connector will be extended and buried as part of a separate project prior to the construction of this Project.
2. DOA will provide all record documents applicable to this task, including the box culvert which will be underneath the new taxiway connector.
3. DOA will pay for all permitting costs.

4. Construction Administration Services and Resident Project Representative Services are not included in this scope of services. If requested, the CONSULTANT will perform Construction Administration Services and Resident Project Representative Services via a separate task order.
5. In providing opinions of probable construction costs, the DOA understands that the CONSULTANT has no control over costs or the price of labor, equipment or materials, or over the Contractor's method of pricing, and that the opinions of probable construction costs provided herein shall be based on the CONSULTANT'S qualifications and experience. The CONSULTANT makes no warranty, expressed or implied, as to the accuracy of such opinions as compared to bid or actual costs.
6. CONSULTANT shall not be responsible for the means, methods, techniques, and sequences, procedures of construction or selection of materials selected by the Contractor or the safety precautions and programs incident to the work of the Contractor. The CONSULTANT shall not guarantee the performance of the Contractor nor be responsible for the acts, errors, omissions, or the failure of the Contractor to perform the construction work in accordance with the Contract Documents.

Exhibit B
Labor/Fee Estimate Summary - CONSULTANT (AECOM Technical Services, Inc.) - Task I-24-PBI-A-028 PBI Taxiway C and M Connector

Billing Rate:	\$	340	\$	236	\$	270	\$	215	\$	128	\$	129	\$	96
---------------	----	-----	----	-----	----	-----	----	-----	----	-----	----	-----	----	----

Task Description	Labor Estimate (Hours)					Fee Estimate (\$)					
	Principal	QC Reviewer	Senior Project Manager	Project Manager / Senior Engineer	Project Engineer	Planner	Clerical	Total	Labor	Expenses	Total
Task I-24-PBI-A-028 PBI Taxiway C and M Connector											
Phase 1A (60% CONSTRUCTION DOCUMENTS)	Total	0	40	186	361	8	10	625	\$103,710	\$750	\$104,460
Attend One (1) DOA Kick-Off Meeting, Agenda & Minutes			2	2	2			6	\$ 1,226	\$ -	\$ 1,226
Internal Design Team Kick-Off Meeting			2	2	2			6	\$ 1,226	\$ -	\$ 1,226
Documents Data Collection and Records Research				2	4			6	\$ 942	\$ -	\$ 942
Box Culvert Structural Analysis			4	80	40			124	\$ 23,400	\$ -	\$ 23,400
Field Coordination Meetings (Site, Geo, and Survey Evals)				4	8			12	\$ 1,884	\$ -	\$ 1,884
Site Evaluation by AECOM and accompany Geotechnical during their work			2	8	40			50	\$ 7,380	\$ 500	\$ 7,880
Cover Sheet (60%).				1	1			2	\$ 343	\$ -	\$ 343
Drawings Index (60%).				1	1			2	\$ 471	\$ -	\$ 471
Summary of Quantities/General Notes (60%).				1	2			3	\$ 471	\$ -	\$ 471
Haul Route, Staging, and Storage Area Plan (60%).			1	2	8			11	\$ 1,724	\$ -	\$ 1,724
Overall Phasing Plans (60%).			1	4	12			13	\$ 2,154	\$ -	\$ 2,154
Individual Work Area Phasing Plans (60%).			2	4	12			18	\$ 2,936	\$ -	\$ 2,936
Construction Safety and Security Notes and Details (60%).				1	2			3	\$ 471	\$ -	\$ 471
Survey Control Plan (60%).				2	4			6	\$ 942	\$ -	\$ 942
Existing Conditions Plan (60%).			1	2	12			15	\$ 2,236	\$ -	\$ 2,236
Demolition Plan (60%).			1	4	12			17	\$ 2,666	\$ -	\$ 2,666
Geometry Plans (60%).			1	2	12	8		23	\$ 3,268	\$ -	\$ 3,268
Typical Sections (60%).			1	2	12			15	\$ 2,236	\$ -	\$ 2,236
Marking Plans (60%).			1	2	12			15	\$ 2,236	\$ -	\$ 2,236
Marking Details (60%).				2	2			4	\$ 686	\$ -	\$ 686
Grading Plans (60%).			1	4	20			25	\$ 3,690	\$ -	\$ 3,690
Taxiway Profile Plan (60%).				2	4			6	\$ 942	\$ -	\$ 942
Pavement Elevation Plan (60%).				2	8			10	\$ 1,454	\$ -	\$ 1,454
Drainage Plans (60%).			2	2	8			12	\$ 1,994	\$ -	\$ 1,994
Drainage Details (60%).			2	2	8			12	\$ 1,994	\$ -	\$ 1,994
Stormwater Pollution Prevention Plans (60%).				2	4			6	\$ 942	\$ -	\$ 942
Stormwater Pollution Prevention Notes and Details (60%).				2	4			6	\$ 942	\$ -	\$ 942
Miscellaneous Details (60%).				2	6			8	\$ 1,198	\$ -	\$ 1,198
Cross Section Layout Plan (60%).				2	2			4	\$ 686	\$ -	\$ 686
Pavement Design			1	4	8			13	\$ 2,154	\$ -	\$ 2,154
60% Technical Specifications			2	4	20			26	\$ 3,960	\$ -	\$ 3,960
60% Construction Safety and Phasing Plan				6	12			18	\$ 2,826	\$ -	\$ 2,826
60% Project Construction Cost Estimate/Quantities			2	4	20			26	\$ 3,960	\$ -	\$ 3,960
60% Project Schedule				2	4			6	\$ 942	\$ -	\$ 942
60% Engineer's Report w/ Geotechnical Report			2	8	24			34	\$ 5,332	\$ -	\$ 5,332
Coordination with Permitting and Regulatory Agencies		20	1	2	8			11	\$ 1,724	\$ -	\$ 1,724
ISO 9001 - QA/QC Review								20	\$ 4,720	\$ -	\$ 4,720
Team Coordination Meetings			2	2	2			6	\$ 1,226	\$ -	\$ 1,226
One (1) DOA Review Submittal Meeting			2	2	2		2	8	\$ 1,418	\$ 250	\$ 1,668
Task Management and Coordination			4	4			8	16	\$ 2,708	\$ -	\$ 2,708

Exhibit B
Labor/Fee Estimate Summary - CONSULTANT (AECOM Technical Services, Inc.) - Task I-24-PBI-A-028 PBI Taxiway C and M Connector

Billing Rate:	\$	340	\$	236	\$	270	\$	215	\$	128	\$	129	\$	96
---------------	----	-----	----	-----	----	-----	----	-----	----	-----	----	-----	----	----

Task Description		Labor Estimate (Hours)					Fee Estimate (\$)					
		Principal	QC Reviewer	Senior Project Manager	Project Manager / Senior Engineer	Project Engineer	Planner	Clerical	Total	Labor	Expenses	Total
Task I-24-PBI-A-028 PBI Taxiway C and M Connector												
Phase 1B (90% CONSTRUCTION DOCUMENTS)	Total	0	20	25	79	191	8	10	333	\$54,895	\$250	\$55,145
Cover Sheet (90%).						1			1	\$ 128	\$ -	\$ 128
Drawings Index (90%).					1	1			2	\$ 343	\$ -	\$ 343
Summary of Quantities/General Notes (90%).					1	2			3	\$ 471	\$ -	\$ 471
Haul Route, Staging, and Storage Area Plan (90%).				1	2	6			9	\$ 1,468	\$ -	\$ 1,468
Overall Phasing Plans (90%).				1	2	8			11	\$ 1,724	\$ -	\$ 1,724
Individual Work Area Phasing Plans (90%).				1	2	8			11	\$ 1,724	\$ -	\$ 1,724
Construction Phasing and Security Notes and Details (90%).					1	2			3	\$ 471	\$ -	\$ 471
Survey Control Plan (90%).					1	1			2	\$ 343	\$ -	\$ 343
Existing Conditions Plan (90%).					2	8			10	\$ 1,454	\$ -	\$ 1,454
Demolition Plan (90%).				1	2	12			15	\$ 2,236	\$ -	\$ 2,236
Geometry Plans (90%).				1	2	6		4	13	\$ 1,984	\$ -	\$ 1,984
Typical Sections (90%).					2	4			6	\$ 942	\$ -	\$ 942
Marking Plans (90%).				1	2	2			5	\$ 956	\$ -	\$ 956
Marking Details (90%).					1	2			3	\$ 471	\$ -	\$ 471
Grading Plans (90%).				1	2	12			15	\$ 2,236	\$ -	\$ 2,236
Taxiway Profile Plan (90%).				1	2	8			11	\$ 1,724	\$ -	\$ 1,724
Pavement Elevation Plan (90%).				1	1	4			6	\$ 997	\$ -	\$ 997
Drainage Plans (90%).				1	2	6			9	\$ 1,468	\$ -	\$ 1,468
Drainage Details (90%).				1	2	2			5	\$ 956	\$ -	\$ 956
Stormwater Pollution Prevention Plans (90%).					2	2			4	\$ 686	\$ -	\$ 686
Stormwater Pollution Prevention Notes and Details (90%)..						3			3	\$ 384	\$ -	\$ 384
Miscellaneous Details (90%).					2	6			8	\$ 1,198	\$ -	\$ 1,198
Cross Section Layout Plan (90%).					1	1			2	\$ 343	\$ -	\$ 343
Cross Sections (90%).				4	12				16	\$ 2,396	\$ -	\$ 2,396
Pavement Design				1	2	2			5	\$ 956	\$ -	\$ 956
90% Technical Specifications				1	6	10			17	\$ 2,840	\$ -	\$ 2,840
90% Front End Specifications & FAA General Provisions				1	8	8			17	\$ 3,014	\$ -	\$ 3,014
90% Construction Safety and Phasing Plan					2	8			10	\$ 1,454	\$ -	\$ 1,454
90% Project Construction Cost Estimate/Quantities				1	4	20			25	\$ 3,690	\$ -	\$ 3,690
90% Project Schedule					2	2			4	\$ 686	\$ -	\$ 686
90% Engineer's Report w/ Geotechnical Report				1	4	10			15	\$ 2,410	\$ -	\$ 2,410
Coordination with Permitting and Regulatory Agencies				2	4	8			14	\$ 2,424	\$ -	\$ 2,424
ISO 9001 - QA/QC Review		20					4		24	\$ 5,236	\$ -	\$ 5,236
Team Coordination Meetings				2	2	2			6	\$ 1,226	\$ -	\$ 1,226
One (1) DOA Review Submittal Meeting				1	2	2		2	7	\$ 1,148	\$ 250	\$ 1,398
Task Management and Coordination				4	4			8	16	\$ 2,708	\$ -	\$ 2,708

Exhibit B
Labor/Fee Estimate Summary - CONSULTANT (AECOM Technical Services, Inc.) - Task I-24-PBI-A-028 PBI Taxiway C and M Connector

Billing Rate:	\$	340	\$	236	\$	270	\$	215	\$	128	\$	129	\$	96
---------------	----	-----	----	-----	----	-----	----	-----	----	-----	----	-----	----	----

Task Description		Labor Estimate (Hours)					Fee Estimate (\$)					
		Principal	QC Reviewer	Senior Project Manager	Project Manager / Senior Engineer	Project Engineer	Planner	Clerical	Total	Labor	Expenses	Total
Task I-24-PBI-A-028 PBI Taxiway C and M Connector												
Phase 1C (100% CONSTRUCTION DOCUMENTS)	Total	0	8	20	49	79	0	10	166	\$28,895	\$250	\$29,145
Cover Sheet (100%)						1			1	\$ 128	\$ -	\$ 128
Drawings Index (100%).						1			1	\$ 128	\$ -	\$ 128
Summary of Quantities (100%).					1	1			2	\$ 343	\$ -	\$ 343
Haul Route, Staging, and Storage Area Plan (100%).					1	1			2	\$ 343	\$ -	\$ 343
Overall Phasing Plans (100%).					1	1			2	\$ 343	\$ -	\$ 343
Individual Work Area Phasing Plans (100%).					2	2			4	\$ 686	\$ -	\$ 686
Construction Phasing and Security Notes and Details (100%).					1	2			3	\$ 471	\$ -	\$ 471
Survey Control Plan (100%).						1			1	\$ 128	\$ -	\$ 128
Existing Conditions Plan (100%).					1	2			3	\$ 471	\$ -	\$ 471
Demolition Plan (100%).					2	4			6	\$ 942	\$ -	\$ 942
Geometry Plans (100%).				1	2	2			5	\$ 956	\$ -	\$ 956
Typical Sections (100%)				1	1	2			4	\$ 741	\$ -	\$ 741
Marking Plans (100%).				1	2	2			5	\$ 956	\$ -	\$ 956
Marking Details (100%).					1	1			2	\$ 343	\$ -	\$ 343
Grading Plans (100%).				1	2	4			7	\$ 1,212	\$ -	\$ 1,212
Taxiway Profile Plan (100%).				1	2	4			7	\$ 1,212	\$ -	\$ 1,212
Pavement Elevation Plan (100%).				1	2	2			4	\$ 686	\$ -	\$ 686
Drainage Plans (100%).				1	2	2			5	\$ 956	\$ -	\$ 956
Drainage Details (100%).					1	1			3	\$ 613	\$ -	\$ 613
Stormwater Pollution Prevention Plans (100%).					1	1			2	\$ 343	\$ -	\$ 343
Stormwater Pollution Prevention Notes and Details (100%).					1	1			2	\$ 343	\$ -	\$ 343
Miscellaneous Details (100%).					1	1			2	\$ 343	\$ -	\$ 343
Cross Section Layout Plan (100%).					1	1			1	\$ 128	\$ -	\$ 128
Cross Sections (100%).					2	12			14	\$ 1,966	\$ -	\$ 1,966
Pavement Design					1	1			2	\$ 343	\$ -	\$ 343
100% Technical Specifications				2	2	4			8	\$ 1,482	\$ -	\$ 1,482
100% Front End Specifications & FAA General Provisions				1	4	4			9	\$ 1,642	\$ -	\$ 1,642
100% Construction Safety and Phasing Plan				1	2	4			7	\$ 1,212	\$ -	\$ 1,212
100% Project Construction Cost Estimate				1	2	4			7	\$ 1,212	\$ -	\$ 1,212
100% Project Schedule				1	1	1			3	\$ 613	\$ -	\$ 613
100% Engineer's Report w/ Geotechnical Report				1	1	4			6	\$ 997	\$ -	\$ 997
Coordination with Permitting and Regulatory Agencies				1	1	1			3	\$ 613	\$ -	\$ 613
ISO 9001 - QA/QC Review		8							8	\$ 1,888	\$ -	\$ 1,888
Team Coordination Meetings				2	2	2			6	\$ 1,226	\$ -	\$ 1,226
One (1) DOA Review Submittal Meeting				1	2	2		2	7	\$ 1,148	\$ 250	\$ 1,398
Task Management and Coordination				2	2			8	12	\$ 1,738	\$ -	\$ 1,738

Exhibit B
Labor/Fee Estimate Summary - CONSULTANT (AECOM Technical Services, Inc.) - Task I-24-PBI-A-028 PBI Taxiway C and M Connector

Billing Rate:	\$	340	\$	236	\$	270	\$	215	\$	128	\$	129	\$	96
---------------	----	-----	----	-----	----	-----	----	-----	----	-----	----	-----	----	----

Task Description	Labor Estimate (Hours)						Fee Estimate (\$)				
	Principal	QC Reviewer	Senior Project Manager	Project Manager / Senior Engineer	Project Engineer	Planner	Clerical	Total	Labor	Expenses	Total
Task I-24-PBI-A-028 PBI Taxiway C and M Connector											
Phase 2 BID AND AWARD SERVICES	0	7	11	46	28	0	0	92	\$18,096	\$0	\$18,096
Bid Drawings			1	6	6			13	\$ 2,328	\$ -	\$ 2,328
Bid Technical Specifications			1	1	1			3	\$ 613	\$ -	\$ 613
Bid Front End Specifications & FAA General Provisions			1	4				5	\$ 1,130	\$ -	\$ 1,130
Bid Construction Phasing and Safety Plan Report				2	2			4	\$ 686	\$ -	\$ 686
Bid Project Construction Cost Estimate				2	2			4	\$ 686	\$ -	\$ 686
ISO 9001 - QA/QC Review		4						4	\$ 944	\$ -	\$ 944
Task Management and Coordination			2	4				6	\$ 1,400	\$ -	\$ 1,400
Assist DOA in Advertisement and Processing of Bid Documents			2	4				6	\$ 1,400	\$ -	\$ 1,400
Prepare and attend Pre-Bid Meeting, Prepare Minutes				4	4			8	\$ 1,372	\$ -	\$ 1,372
Prepare and Maintain Bid Holders Log					4			4	\$ 512	\$ -	\$ 512
Respond to Contractor's Request for Information (RFI's)			2	8				10	\$ 2,260	\$ -	\$ 2,260
Prepare and Issue Addenda		2	2	8	4			16	\$ 3,244	\$ -	\$ 3,244
Attend Bid Opening Meeting					1			1	\$ 128	\$ -	\$ 128
Prepare, Review and Evaluate Bid Tabulation and Bid Forms				1	2			3	\$ 471	\$ -	\$ 471
Prepare and Submit Recommendation of Bid Award Letter to DOA		1		2	2			5	\$ 922	\$ -	\$ 922
Total Fee - AECOM Technical Services, Inc.	0	55	96	360	659	16	30	1,216	\$205,596	\$1,250	\$206,846

Subconsultant Fees

1	Brown and Phillips (LS)	\$	14,259.00
	Brown and Phillips (T&M)		
2	Tierra South Florida (LS)	\$	13,636.84
	Tierra South Florida (T&M)		
3	Quantum Electrical Engineering (LS)	\$	21,880.00
	Quantum Electrical Engineering (T&M)		

Lump Sum	\$227,476.00
T&M	\$27,895.84
Expenses	\$1,250.00
TOTAL	\$256,621.84

Total Fee - Subconsultants \$ 49,775.84

GRAND TOTAL FEE - BASIC ENGINEERING SERVICES \$ 256,621.84

Prepared by: AECOM Technical Services, Inc.

April 16, 2024

Mr. Ryan Signorin, P.E.
AECOM
7650 West Courtney Campbell Causeway
Tampa, FL 33607

**Re: Palm Beach International Airport (PBLA) Taxiway C and M - New Connector Design
Topographic Survey**

Dear Ryan:

Thank you for the opportunity to provide you with the following services for the subject site. This proposal is based on documentation and information provided by your office. The scope of services is as follows:

SCOPE OF SERVICES

I. TOPOGRAPHIC SURVEY

Utilizing Airport Control from the survey previously prepared by this office for Air Cargo Expansion Area (B&P Project #23-092), we will supplement and update the survey to include the area outlined in pink on Attachment 'B'. The survey will tie-in all above ground features, including but not limited to, pavement, utilities, and drainage structures. We will attempt to get as-built information on all the pipes leading out of any storm or sanitary sewer structures found. We will show invert elevations, pipe sizes and materials for all pipes located including outfall pipes. We will obtain elevations on the site on a 25' grid on paved surfaces and a 50' grid on off-pavement (ground) surfaces, and additional shots as needed to define unique topographic features such as depressions and ditches. We will also obtain elevations on the edge of pavement and top of ground to show the edge break point. In addition, we will prepare a TIN file and all the corresponding break lines for the design of the new taxiway connector. Since a TIN is required, this will entail additional shots to be taken on the cross sections to accurately depict the existing conditions.

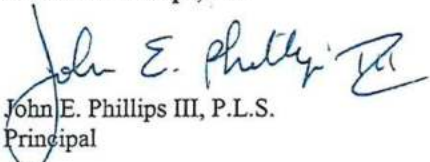
II. UTILITY TARGETING SERVICES

We will scan the area outlined in pink on Attachment 'B' and mark any underground utilities that service the site and provide utility clearances for the geotechnical data collection. We will then locate the designated utilities and add them to the survey. No test holes are proposed.

III. CLOSURE

A drawing will be produced which will show all the features located. We propose to provide AECOM with hard copies, a digitally signed PDF file, and an AutoCAD file in the version requested. We will perform the scope of services for an hourly, **not-to-exceed fee of \$14,259.00** (\$12,759.00 for the survey and \$1,500.00 for utility targeting services), see Attachment 'A' for an hourly breakdown. Please do not hesitate to call me with any questions you might have regarding this proposal. We look forward to working with you on this project.

Brown & Phillips, Inc.


John E. Phillips III, P.L.S.
Principal

Attachment

This Proposal accepted this _____ day of _____, 2024

By: _____
AECOM

Print Name: _____

Title: _____

1860 Old Okeechobee Road • Suite 509 • West Palm Beach, Florida 33409

(561) 615-3988 • Fax (561) 615-3991

M:\PROPOSALS\BY COMPANY\AECOM\PBLA\Taxiway C and M Connector\Taxiway C and M Connector topographic survey.docx

ATTACHMENT 'A'

Palm Beach International Airport (PBI) Taxiway C and M - New Connector Design

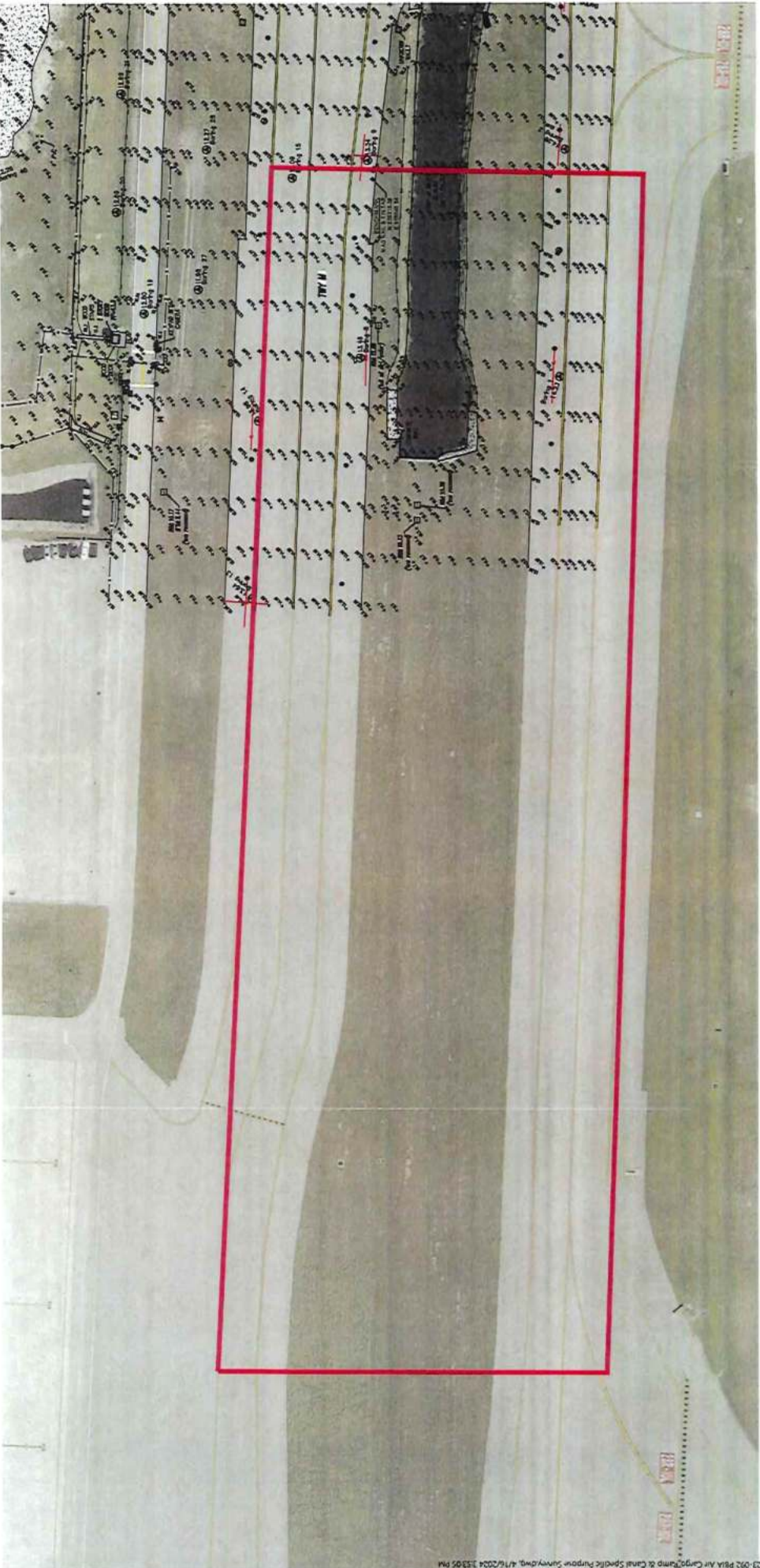
Type of Survey: Topographic
Size: ±10.57 acres
Date: April 16, 2024

TASK	SURVEY CREW	CADD TECH	SURVEY TECH	PLS	COMMENTS
Meetings and Coordination				2	
Horizontal Project Network Control	3		2	0.5	Set control points
Vertical Project Network Control	3		0.5		Establish onsite benchmarks
Tie In Improvements, Cross Sections and As-builts	40		8	2	Locate above ground features, 25' and 50' cross sections and spot elevations, obtain asbuilt data, TIN
Underground Utilities	4		1		Field locate flagged utilities
Topographic Survey		26	4	2	Prepare topographic survey
Total Hours:	50	26	15.5	6.5	
Rate/Hour	\$156.00	\$96.00	\$96.00	\$150.00	
Subtotal:	\$7,800.00	\$2,496.00	\$1,488.00	\$975.00	
Total Labor Cost:					\$12,759.00

S.U.E.Services:	quantity	unit	cost/unit	total	
Utility Targeting	0.75	day	\$2,000.00	\$1,500.00	
Other		each	\$0.00	\$0.00	
Total S.U.E. Services:					\$1,500.00
TOTAL PRICE					\$14,259.00

Attachment 'B'

2





May 2, 2024 (Revised)
April 12, 2024

AECOM Technical Services, Inc.
7650 West Courtney Campbell Causeway
Tampa, FL 33607

Attn: Mr. Ryan Signorin, P.E.
Email: Ryan.Signorin@aecom.com

RE: **Proposal for Geotechnical Services**
PBIA Taxiway C & M Connector
West Palm Beach, Florida
TSFGEO Proposal No. 2404-256

Dear Ryan:

As requested, **Tierra South Florida, Inc. (TSFGEO)** is pleased to submit this proposal for the above-referenced project. The proposal is based on information provided by AECOM on April 11, 2024. Based on our understanding of the project, the proposed construction will consist of a new taxiway connector. This proposal includes an outline of our proposed scope of work, an estimate of the total fees, and our anticipated schedule for completion of the work.

PROPOSED SCOPE OF WORK

As requested, the following field testing will be performed:

Table 1 – Proposed Field Testing	
Location	Proposed Services
Taxiway connector	<ul style="list-style-type: none">- Four (4) Standard Penetration Test (SPT) borings to a depth of 10 feet- Eight (8) Asphalt Pavement Cores- Two (2) Field CBR Tests

Prior to drilling at the project site, TSFGEO will notify the local utility companies and request that underground utilities be marked (Sunshine State One Call). **Our experience, however, is that the utility companies will not mark privately owned utilities. Our proposal assumes that private utility lines will be located in the field by others prior to mobilization of the drill rig. TSFGEO can recommend a utility line locating service upon request.**

Upon completion of the field exploration some laboratory testing and visual classifications will be performed on selected samples.

A report will be issued that contains the exploration data, a discussion of the site and subsurface conditions, and the pavement core data and photos.

ESTIMATED FEES

It is proposed that the fee for the performance of the services outlined above is determined on a unit price basis in accordance with the attached Fee Schedule and that the services be performed pursuant to TSFGeo's General Conditions enclosed herewith and incorporated into this proposal. On the basis of the proposed quantities, the estimated total fee is:

FIELD INVESTIGATION - Day	\$5,900.00
LABORATORY TESTING	\$840.00
ENGINEERING/COORDINATION/MANAGEMENT	<u>\$6,896.84</u>
TOTAL	\$13,636.84

The above estimate assumes that the site is open and accessible to our truck-mounted drill rig. Our estimate covers the work needed to present our findings in a formal report. Not included are reviews of foundation drawings, preparation of construction specifications, special conferences and any other work requested after submittal of our report.

Boring, sampling, and testing requirements are functions of the subsurface conditions encountered. Therefore, the estimated fee previously indicated is approximate, and compensation for the exploration will be based on the actual work and tests performed. We will endeavor to keep the exploration cost at a minimum consistent with good engineering practice.

SCHEDULE AND AUTHORIZATION

TSFGeo will proceed with the work after receipt of a signed copy of this proposal. With our present schedule, we can commence work within a few days of project approval (weather permitting and permit approval) and after utilities have been cleared. The fieldwork is expected to take 2 to 3 days to complete. The report can typically be submitted within 3 weeks after completion of the field exploration. Verbal preliminary recommendations can be made to appropriate parties prior to submittal of the written report.

We at TSFGeo appreciate the opportunity to submit this proposal and look forward to working with you on this project. If you should have any questions concerning our proposal, please contact our office.

Respectfully submitted,

TSFGeo



Raj Krishnasamy, P.E.
Principal Engineer/President

Attachments: General Conditions
Fee Schedule

AUTHORIZED BY:	INVOICE TO:
Name:	Firm:
Title:	Name:
Date:	Address:
	Phone :

FIELD INVESTIGATION

Mobilization of Men and Equipment						
Truck-Mounted Equipment	LS	1	\$	450.00	\$	450.00
Support Vehicle	DAY	2	\$	150.00	\$	300.00
Standard Penetration Test Borings						
(By Truck-Mounted Equipment)						
Land: 0 - 50 ft depth	L.F.	40	\$	15.00	\$	600.00
50 - 100 ft depth	L.F.	0	\$	17.00	\$	0.00
Grout-Seal Boreholes						
(By Truck-Mounted Equipment)						
Land: 0 - 50 ft depth	L.F.	40	\$	7.00	\$	280.00
50 - 100 ft depth	L.F.	0	\$	8.00	\$	0.00
Casing						
(By Truck-Mounted Equipment)						
Land: 0 - 50 ft depth	L.F.	40	\$	8.00	\$	320.00
50 - 100 ft depth	L.F.	0	\$	10.00	\$	0.00
Pavement Cores, Asphalt	Each	8	\$	250.00	\$	2,000.00
Coring Machine + Generator Rental	Trip	1	\$	450.00	\$	450.00
Field CBR	Each	2	\$	750.00	\$	1,500.00

LABORATORY TESTING

Natural Moisture Content Tests	Test	4	\$	15.00	\$	60.00
Grain-Size Analysis - Full Gradation	Test	4	\$	65.00	\$	260.00
Grain-Size Analysis - Single Sieve	Test	4	\$	35.00	\$	140.00
Organic Content Tests	Test	4	\$	50.00	\$	200.00
Atterberg Limit Tests	Test	2	\$	90.00	\$	180.00

ENGINEERING/COORDINATION/MANAGEMENT

Project Manager	Hour	2	\$	253.06	\$	506.12
Principal Engineer	Hour	4	\$	269.40	\$	1,077.60
Project Engineer	Hour	16	\$	166.53	\$	2,664.48
Senior Technician	Hour	20	\$	91.68	\$	1,833.60
CADD	Hour	8	\$	101.88	\$	815.04

\$ 13,636.84

April 15, 2024

AECOM Technical Services, Inc.
Mr. Ryan Signorin, P.E.
7650 West Courtney Campbell Causeway
Tampa, FL 33607

Subject: Electrical Design Services Fee Proposal for the Palm Beach County Department of Airports (DOA) – Task I-23-PBI-A-001 PBI Taxiway C and M Connector.

Dear Ryan:

Quantum Electrical Engineering, Inc. (QUANTUM) is pleased to provide AECOM an electrical design services fee proposal for Task I-23-PBI-A-001 Palm Beach International Airport (PBI) Taxiway C and M Connector. The proposal is based upon information provided by AECOM via email on 04/11/2024. The following tasks are included in our scope of services:

Phase 1A, 1B and 1C: Design Documents

- Includes attending (1) virtual kickoff meeting with the DOA and AECOM Team.
- Includes attending (1) virtual design team meeting with the AECOM Team.
- Includes record drawing reviews, on-site electrical verifications, and visual assessment of existing conditions.
- Design new airfield lighting and signage systems for a new taxiway connector between Taxiway M and C. Includes plan layouts, details, schedules, electrical calculations and demolition plans of existing airfield electrical systems.
- Includes attending (3) virtual design review meetings with the DOA and AECOM Team.
- Includes airfield electrical plans reflecting the modification to the existing ALCMS graphic.

Assumptions and Exclusions:

- AECOM shall provide all base drawings to QUANTUM on AutoCAD 2022 or higher.
- Airfield lighting and signage locations will be based on the AECOM marking files and FAA Circulars.
- QUANTUM shall provide an electronic set of electrical plans, specifications, estimate engineering report to AECOM for 60%, 90% and 100% reviews.
- AECOM shall provide all printing of plans, specifications, estimate and engineering reports.
- Does not include bid and award services and construction services.

Our proposed total Lump-Sum fee is

\$ 21,880.00

Sincerely,



Amy L. Champagne-Baker, PE
President

Palm Beach County
2755 Vista Parkway, Suite I-12
West Palm Beach, FL 33411
561.210.9224

www.QuantumElectricalEngineering.com

Broward County
5571 N. University Drive, Suite 101
Coral Springs, FL 33067
954.369.5810

PALM BEACH COUNTY DEPARTMENT OF AIRPORTS - PBI TAXIWAY C AND M CONNECTOR											
QUANTUM ELECTRICAL ENGINEERING, INC.											
SCOPE FEE SUMMARY											
FEE PROPOSAL ELECTRICAL SERVICES to AE 4/15/2024											
	Rate	\$170.00	\$150.00	\$145.00	\$85.00	\$140.00	\$50.00		Total	Expenses	TOTAL
PHASE OF WORK		Proj. Mgr. Hours	Prof. Eng Hours	Proj. Eng Hours	CADD/Tech Hours	Field Eng. Hours	Clerical Hours		Hours		TASK COST
Design Documents											
Phase 1A: 60% Design Documents											
Design Review Mtgs DOA and AE			3						3		\$450.00
Site Investigation, Record Drawing Review and Discovery			4						4		\$600.00
Electrical Design Drawings			8	24	40				72		\$8,080.00
Specifications & Cost Estimate			6				2		8		\$1,000.00
QA/QC & Comment Incorporation			2	4	4				10		\$1,220.00
Subtotal		0	23	28	44	0	2		97		\$11,350.00
Phase 1B: 90% Design Documents											
Design Review Mtgs DOA and AE											
Electrical Design Drawings			1						1		\$150.00
Specifications & Cost Estimate			4	16	32				52		\$5,640.00
QA/QC & Comment Incorporation			4						4		\$600.00
Subtotal		0	11	18	36	0	0		65		\$7,320.00
Phase 1C: 100% Design Documents											
Design Review Mtgs DOA and AE											
Electrical Design Drawings			1						1		\$150.00
Specifications & Cost Estimate			4	8	8				20		\$2,440.00
QA/QC & Comment Incorporation			2						2		\$300.00
Subtotal		0	8	8	10	0	0		26		\$3,210.00
Grand Total Hours		0	42	54	90	0	2		188		
Grand Total Labor Cost		\$0.00	\$6,300.00	\$7,830.00	\$7,650.00	\$0.00	\$100.00				\$21,880.00

EXHIBIT A-7

PALM BEACH DOA GENERAL CONSULTING SERVICES

EXHIBIT A-7

Miscellaneous Planning, Engineering and Construction Services

Palm Beach International Airport (PBIA)

North Palm Beach County General Aviation Airport (F45)

Palm Beach County Park Airport (LNA)

Palm Beach County Glades Airport (PHK)

Task I-24-DOA-A-029: Miscellaneous Planning & Engineering Services

OVERVIEW

The Palm Beach Department of Airports (DOA) has requested that AECOM Technical Services, Inc. (AECOM or CONSULTANT) provide professional services for Task I-24-DOA-A-029: Miscellaneous Planning & Engineering Services Project (Project).

PROJECT TEAM

Firm Name (CONSULTANT / SUBCONTRACTOR)	Type of Services
AECOM Technical Services, Inc. (CONSULTANT)	Miscellaneous As-Needed Support

AECOM will assist the DOA with general aviation planning support tasks for the four (4) DOA airports that are frequently requested and typically require only a few hours/days of effort and are required in a short timeframe. The specific tasks expected to be developed are described below:

SCOPE OF WORK

- 01: The DOA periodically requests the CONSULTANT to conduct Independent Fee Estimates (IFE) on various projects varying in size and scope of work. AECOM will submit an initial Independent Fee Estimate (Cover Letter plus Spreadsheet) for each task, followed by clarifications of our reasoning for developing our associated fees.
- 02: AECOM will assist the DOA with miscellaneous planning, programming, and engineering support services for various tasks at the DOA airports and

associated properties. These tasks typically include updating planning maps and sketches, evaluating and providing recommendations for small miscellaneous assignments, preparing preliminary cost estimates, and other miscellaneous tasks.

- 03: This task also includes developing general project scopes of work and rough order of magnitude budget estimates for DOA use in the planning, engineering, and programming of upcoming design and construction projects.

PROJECT SCHEDULE

The schedule for each of these tasks will vary.

--	--

--	--

100

			Free Estimate (\$)		
				Expenses	Total
	Total	Labor			
	272	\$60,000	10		\$60,000
	18	\$12,654	40		\$12,654
	10	\$19,047	50		\$19,047
	94	\$18,099	50		\$18,099
	272	\$	50,000	0	\$ 90,000

5	35	73	89	0	0
---	----	----	----	---	---

12

[illegible]

1000 JOURNAL OF POST KEYNESIAN ECONOMICS

EXHIBIT B:

DETAILED FEES, EXPENSES AND PAYMENTS

EXHIBIT B-I Summary of Fees

EXHIBIT B-II Schedule of Payments



EXHIBIT B-I
SUMMARY OF FEES

Project	Lump Sum	T&M	Reimbursable Expenses	Total
TASK I SERVICES				
Task I-24-PBI-A-023 PBI Taxiway R Rehabilitation CM/CA/RPR Services	\$133,187.00	\$244,841.64	\$0.00	\$378,028.64
Task I-24-LNA-A-024 LNA Runway 4-22 Slurry Seal	\$51,048.00	\$0.00	\$0.00	\$51,048.00
Task I-24-F45-A-025 F45 Rotating Beacon Replacement CM/CA/RPR Services	\$24,922.00	\$32,591.50	\$0.00	\$57,513.50
Task I-24-PBI-A-026 PBI Miscellaneous Drainage Repairs – Package 2 CM/CA/RPR Services	\$38,479.00	\$56,488.00	\$0.00	\$94,967.00
Task I-24-PBI-A-027 PBI Repairs to Short-Term and Long-Term Parking Garage 3 CM/CA/RPR Services	\$111,558.00	\$379,910.28	\$0.00	\$491,468.28
Task I-24-PBI-A-028 PBI Taxiway C and M Connector	\$227,476.00	\$27,895.84	\$1,250.00	\$256,621.84
Task I-24-DOA-A-029 Miscellaneous Planning & Engineering Services	\$0.00	\$50,000.00	\$0.00	\$50,000.00
TASK III SERVICES				
Task III: Deliverable(s) As required in accordance with specific Task Authorizations				\$250,000.00
TOTAL				\$1,629,647.26

EXHIBIT B-II

SCHEDULE OF PAYMENTS

The Scope of Work to be completed by CONSULTANT as defined in Exhibit "A" consists of specific completion phases which shall be clearly identified upon submission to the COUNTY of certain "deliverables" as expressly indicated below. Compensation for the work tasks stated herein shall be in accordance with the following Schedule of Payments:

Tasks to Be Completed:

Project	Duration	Total
TASK I SERVICES		
Task I-24-PBI-A-023 PBI Taxiway R Rehabilitation CM/CA/RPR Services	230 days	\$378,028.64
Task I-24-LNA-A-024 LNA Runway 4-22 Slurry Seal	120 days	\$51,048.00
Task I-24-F45-A-025 F45 Rotating Beacon Replacement CM/CA/RPR Services	165 days	\$57,513.50
Task I-24-PBI-A-026 PBI Miscellaneous Drainage Repairs – Package 2 CM/CA/RPR Services	192 days	\$94,967.00
Task I-24-PBI-A-027 PBI Repairs to Short-Term and Long-Term Parking Garage 3 CM/CA/RPR Services	450 days	\$491,468.28
Task I-24-PBI-A-028 PBI Taxiway C and M Connector	180 days	\$256,621.84
Task I-24-DOA-A-029 Miscellaneous Planning & Engineering Services	TBD	\$50,000.00
TASK III SERVICES		
Task III: Deliverable(s) As required in accordance with specific Task Authorizations	TBD	\$250,000.00
TOTAL		\$1,629,647.26



EXHIBIT C

PROPOSED SCHEDULES

Project	Duration
TASK I SERVICES	
Task I-24-PBI-A-023 PBI Taxiway R Rehabilitation CM/CA/RPR Services	230 days
Task I-24-LNA-A-024 LNA Runway 4-22 Slurry Seal	120 days
Task I-24-F45-A-025 F45 Rotating Beacon Replacement CM/CA/RPR Services	165 days
Task I-24-PBI-A-026 PBI Miscellaneous Drainage Repairs – Package 2 CM/CA/RPR Services	192 days
Task I-24-PBI-A-027 PBI Repairs to Short-Term and Long- Term Parking Garage 3 CM/CA/RPR Services	450 days
Task I-24-PBI-A-028 PBI Taxiway C and M Connector	180 days
Task I-24-DOA-A-029 Miscellaneous Planning & Engineering Services	TBD
TASK III SERVICES	
Task III: Deliverable(s) As required in accordance with specific Task Authorizations	TBD

EXHIBIT D

DBE

SCHEDULE 1(A)
LIST OF PROPOSED DBE FIRMS
(Professional Services)

LOI/SOQ Project Description: Airport General Consulting
Name of Respondent: AECOM Technical Services, Inc. Change Order/Task/Amendment No. (if applicable): Amendment 3
Contact Person: Andrew Kacer E-mail Address: Andy.Kacer@aecom.com
Address: 7650 West Courtney Campbell Causeway, Tampa, FL 33607
Phone No: (O) 813.636.2425 (C) 352.634.4363 Fax No: 813.287.8591

Name, Address & Phone No. of DBE Firm	Description of Type of Work	Classification (Check applicable box)	Dollar Amount			
			Black	Hispanic	Women	Other (Please Specify)
Quantum Electrical Engineering, Inc. 2755 Vista Parkway, Suite I-9 West Palm Beach, FL 33411 (561) 210-9224	Electrical Services	<input type="checkbox"/> Prime Consultant <input checked="" type="checkbox"/> Subcontractor <input type="checkbox"/> Supplier <input type="checkbox"/> Manufacturer	%	%	2.51 %	%
Tierra South Florida 2765 Vista Parkway, Suite 10 West Palm Beach, FL 33411 (561) 687-8536	Geotechnical Services	<input type="checkbox"/> Prime Consultant <input checked="" type="checkbox"/> Subcontractor <input type="checkbox"/> Supplier <input type="checkbox"/> Manufacturer	%	%	%	Asian Pacific 9.04 %
Brown & Phillips 1800 Old Okeechobee Road Suite 509, West Palm Beach, FL (561) 615-3988	Surveying	<input type="checkbox"/> Prime Consultant <input checked="" type="checkbox"/> Subcontractor <input type="checkbox"/> Supplier <input type="checkbox"/> Manufacturer	0.87 %	%	%	%
		<input type="checkbox"/> Prime Consultant <input checked="" type="checkbox"/> Subcontractor <input type="checkbox"/> Supplier <input type="checkbox"/> Manufacturer	%	%	%	%

Total Percentage of DBE Participation: 12.42 %

Notes:

- The percentages listed on this form for each DBE Firm must be supported by the percentages included on Schedule 2(A), "Letter of Intent to Perform as a Disadvantaged Business Enterprise", in order to be counted toward attainment of the DBE goal.
- Firms identified on this form must be certified as a DBE by the State of Florida's Unified Certification Program. Certification status can be verified on the Florida Department of Transportation's Biznet website at <https://www3.dot.state.fl.us/EqualOpportunityOffice/biznet/mainmenu.asp>.
- If materials or supplies are proposed to be purchased from a DBE regular dealer, the undersigned acknowledges that only sixty percent (60%) of the proposed expenditure will be counted toward attainment of the DBE goal.

By signing this form the undersigned Respondent is committing to utilize the above referenced DBE Firms on the Project and that the Respondent will monitor the DBE Firms to ensure that the work is actually performed by the by the DBE Firms.

Andrew Kacer

By: _____ Date: 05/16/2024

Signature
Andrew Kacer - Vice President
Print Name/Title of Person Executing on Behalf of the Respondent

SCHEDULE 2(A)
LETTER OF INTENT TO PERFORM AS A DISADVANTAGED BUSINESS ENTERPRISE
(Professional Services)

LOI/SOQ Project Description: Airport General Consulting

Change Order/Task /Amendment No. (if applicable): Amendment No. 3

Name of Prime Respondent: AECOM Technical Services, Inc

Name of DBE Firm: Quantum Electrical Engineering, Inc.

The undersigned is certified as a Disadvantaged Business Enterprise by the State of Florida's Unified Certification Program. Check one or more classifications as applicable:

- ☐ Black ☐ Hispanic ☒ Women ☐ Other (Please Specify)
☐ Prime Consultant ☒ Subcontractor ☐ Manufacturer ☐ Supplier

The undersigned is prepared to perform the following described work in connection with the above-referenced project (specify in detail the particular work and/or parts thereof to be performed):

Electrical Services

(Additional Sheets may be used as necessary.)

Total Percentage of Participation by DBE Firm for this Project: 2.51 %

and will enter into a formal agreement for work with you conditioned upon your execution of a contract with Palm Beach County.

If the undersigned intends to subcontract any portion of the work described above to another subcontractor, please complete the following:

<hr style="border: none; border-top: 1px solid black;"/>	%	<input type="checkbox"/> DBE Certified
(Name of Subcontractor)	Percentage of work to be subcontracted)	<input type="checkbox"/> Non-DBE

The undersigned affirms that it has the resources necessary to perform the work described above without subcontracting the work to another subcontractor, except as noted above.

Quantum Electrical Engineering, Inc.
Printed Name of DBE Subcontractor

By:



Signature

Date: 05-16-2024

Schedule 2(A)
v.10-26-11

SCHEDULE 2(A)
LETTER OF INTENT TO PERFORM AS A DISADVANTAGED BUSINESS ENTERPRISE
(Professional Services)

LOI/SOQ Project Description: Airport General Consulting

Change Order/Task /Amendment No. (if applicable): Amendment 3

Name of Prime Respondent: AECOM Technical Services, Inc

Name of DBE Firm: Brown & Phillips, Inc.

The undersigned is certified as a Disadvantaged Business Enterprise by the State of Florida's Unified Certification Program. Check one or more classifications as applicable:

☒ Black ☐ Hispanic ☐ Women ☐ Other (Please Specify)
☐ Prime Consultant ☒ Subcontractor ☐ Manufacturer ☐ Supplier

The undersigned is prepared to perform the following described work in connection with the above-referenced project (specify in detail the particular work and/or parts thereof to be performed):

Survey

(Additional Sheets may be used as necessary.)

Total Percentage of Participation by DBE Firm for this Project: 0.87 %

and will enter into a formal agreement for work with you conditioned upon your execution of a contract with Palm Beach County.

If the undersigned intends to subcontract any portion of the work described above to another subcontractor, please complete the following:

(Name of Subcontractor) _____% ☐ DBE Certified
(Percentage of work to be subcontracted) ☐ Non-DBE

The undersigned affirms that it has the resources necessary to perform the work described above without subcontracting the work to another subcontractor, except as noted above.

Brown & Phillips, Inc.
Printed Name of DBE Subcontractor

By: 
Signature

Date: 05-16-2024

Contract History



PALM BEACH COUNTY DEPARTMENT OF AIRPORTS
PROFESSIONAL SERVICES AGREEMENT WITH AECOM TECHNICAL SERVICES, INC. FOR CONSULTING/PROFESSIONAL SERVICES
CONTRACT HISTORY
CONTRACT NO. R2023-0980

DOA CONTRACT NO. DATE APPROVED BY BCC *EXPIRATION DATE ORIGINAL CONTRACT AMOUNT = ORIGINAL CONTRACT DBE COMMITMENT ORIGINAL AGREEMENT SERVICES:		DOA 22-13 7/11/2023 7/10/2025 \$2,126,629.78 23.08%		*Pursuant to Article 2 Performance Period continued performance of on-going services related to tasks authorized prior to the expiration of the contract shall extend the term presented to allow for the completion of the task.			
The agreement with AECOM Technical Services, Inc. is for a term of two (2) years, with three (3) one (1) year renewal options in the amount of \$2,126,629.78, for the performance of Consulting/Professional Services. The original agreement includes the following: Palm Beach International Airport (PBI) Taxiway R Rehabilitation; PBI Cargo Ramp Expansion; Miscellaneous Planning & Engineering Services 2023; PBI Roof Replacement Resident Inspection Services; PBI Garage Repairs Threshold Inspection Services; LNA Phases 3 and 4; PBI Windcone Relocation and Replacement (CM/CA/RPR); PBI Repackage/Bid Garage Repairs; Landside Terminal Paging System Expansion; and Miscellaneous Architectural, Planning, Financial, Environmental, Engineering and Construction Services.							
AMEND No.	BCC APPROVAL DATE	DBE COMMITMENT	AMEND TIME	AMENDMENT AMOUNT	NEW CONTRACT AMOUNT	STATUS	DESCRIPTION
1	11/7/2023	38.45%		\$1,396,545.04	\$3,523,174.82	Approved R2023-1654	F45 Stormwater Master Plan; LNA Stormwater Master Plan; PHK Stormwater Master Plan; PBI Turnage Boulevard Rehabilitation; PBI Terminal Wall Repairs; Miscellaneous Planning & Engineering Services; and Task III Deliverable(s) as required in accordance with specific Task Authorizations.
2	1/23/2024	16.04%		\$1,897,269.66	\$5,420,444.48	Approved R2024-0110	PBI Holding Apron at TW A and C; PBI Taxiway M, M1, and M2 Reconstruction Improvements; PBI Stormwater Master Plan; PBI Garage Additional Services; New LNA Rotating Beacon and Tower; Miscellaneous Planning & Engineering Services; DBE Program Outreach Services 2024/25; and Task III Deliverable(s) as required in accordance with specific Task Authorizations.
3	TBD	12.42%		\$1,629,647.26	\$7,050,091.74	TBD	Approval of this Amendment will increase the amount of the Agreement by \$1,629,647.26, resulting in a cumulative contract value of \$7,050,091.74. This Amendment includes the following tasks: Task I Services – PBI Taxiway R Rehabilitation CM/CA/RPR Services; LNA Runway 4-22 Slurry Seal; F45 Rotating Beacon Replacement CM/CA/RPR Services; Miscellaneous Drainage Repairs - Package 2 CM/CA/RPR Services; PBI Repairs to Short-Term and Long-Term Parking Garage 3 CM/CA/RPR Services; PBI Taxiway C and M Connector; and Miscellaneous Planning & Engineering Services. This Amendment also includes Task III Deliverable(s) as required in accordance with specific Task Authorizations.
DBE Commitment Cumulative DBE Participation		21.77% 22.64%		\$4,923,461.96 Total Contract	\$7,050,091.74 \$7,050,091.74		

Attachment No. 2

DBE GOAL Information

[REDACTED]

Cynthia Portnoy

From: Martha K. LaVerghetta
Sent: Tuesday, November 29, 2022 8:17 PM
To: Cynthia Portnoy
Cc: Nancy Herrera; George Santos; Gary Sypek; Andrew Gamboa
Subject: RE: Emailing: DOA 22-13 GEC - DBE Goal - 2022_revised, DOA 22-14 Facilities Systems - DBE Goal - 2022 Revised
Attachments: PBI - FY 2023-25 DBE Goal 8-25-22 - final.pdf

Cindy,

As an alternative, we could use the FY 2023-25 Overall DBE Goal to set the % participation on these projects. That goal is 20.90% this number seems to be more in line with what you are hoping to see for DBE participation... it is also more consistent with our past goal setting and participation requirements.

The Overall DBE Goal report is attached for you, if needed. I thought you might like to see how the 20.90% was calculated.

If you still want to consider using past participation to adjust the goal(s), I would appreciate your help please to identify the best and most appropriate projects that should be used.

Please let me know your thoughts and/or what you decide.

Thank you so much,
Martha

From: Cynthia Portnoy
Sent: Monday, November 28, 2022 10:20 AM
To: Martha K. LaVerghetta
Cc: Nancy Herrera ; George Santos ; Gary Sypek ; Andrew Gamboa
Subject: RE: Emailing: DOA 22-13 GEC - DBE Goal - 2022_revised, DOA 22-14 Facilities Systems - DBE Goal - 2022 Revised

Martha since the goals are so much lower than the previous consultant contracts we will need to adjust for past participation (see attached pdfs). One difference I see is that in the previous 2018 calculations there was a line for Construction Management (NAICS 236220) which is a construction classification not a professional services so I did not include this in my breakdown. Construction Management that is referenced in the description would be provided by the Engineers under the 541330 NAICS. I think the reference below is more for the CMAR contracts.

236220 Commercial and Institutional Building Construction

This industry comprises establishments primarily responsible for the construction (including new work, additions, alterations, maintenance, and repairs) of commercial and institutional buildings and related structures, such as stadiums, grain elevators, and indoor swimming facilities. This industry includes establishments responsible for the on-site assembly of modular or prefabricated commercial and institutional buildings. Included in this industry are commercial and institutional building general contractors, commercial and institutional building for-sale builders, commercial and institutional building design-build firms, and commercial and institutional building project construction management firms.

Cynthia M. Portnoy, PE
Deputy Director Planning & Development

Palm Beach County Department of Airports
846 Palm Beach International Airport
West Palm Beach, FL 33406-1470
561-471-7411 Direct
954-242-5181 Mobile

Under Florida's public records law, e-mail communications to and from Palm Beach County, including e-mail addresses, are subject to public disclosure. If you do not want your e-mail address released in response to a public records request, do not send electronic mail to this entity. Instead, contact this office by phone or in writing. CONFIDENTIALITY NOTICE: This E-mail (including any attachments) is covered by the Electronic Communications Privacy Act, 18 U.S.C. 2510-2521, and is confidential, it may be legally privileged. If you are not the intended recipient, you are hereby notified that any retention, dissemination, distribution, or copying of this communication is strictly prohibited. Please reply to the sender that you have received the message in error and then delete it.

-----Original Message-----

From: Martha K. LaVerghetta <mklaverghetta@pbia.org>

Sent: Wednesday, November 23, 2022 4:03 PM

To: Cynthia Portnoy <cportnoy@pbia.org>; George Santos <gsantos@pbia.org>

Cc: Nancy Herrera <NHerrera@pbia.org>

Subject: Emailing: DOA 22-13 GEC - DBE Goal - 2022_revised, DOA 22-14 Facilities Systems - DBE Goal - 2022 Revised

Your message is ready to be sent with the following file or link attachments:

DOA 22-13 GEC - DBE Goal - 2022_revised

DOA 22-14 Facilities Systems - DBE Goal - 2022 Revised

Note: To protect against computer viruses, e-mail programs may prevent sending or receiving certain types of file attachments. Check your e-mail security settings to determine how attachments are handled.

Attachment No. 3

Budget Transfer

[REDACTED]

24-0774

BOARD OF COUNTY COMMISSIONERS
PALM BEACH COUNTY, FLORIDA
BUDGET TRANSFER

Advantage Document Numbers

BGRV:

BGEX: 121-052024*1412

FUND 4111 Airport Improvement & Development Fund

ACCT.NUMBER	ACCOUNT NAME	ORIGINAL BUDGET	CURRENT BUDGET	INCREASE	DECREASE	ADJUSTED BUDGET	EXPENDED/ ENCUMBERED As of 5/20/24	REMAINING BALANCE
-------------	--------------	--------------------	-------------------	----------	----------	--------------------	--	----------------------

REVENUES/EXPENDITURES

121-A495-6505	Design/Eng/Mgmt - CIP Adm	0	0	378,029	0	378,029	0	378,029
121-A900-9909	Reserves Improvement Program	17,216,760	19,284,926	0	378,029	18,906,897	0	18,906,897

Total Receipts and Balances

217,226,377	233,362,680	378,029	378,029	233,362,680
-------------	-------------	---------	---------	-------------

Signatures & Dates

Office of Financial Management & Budget

INITIATING DEPARTMENT/DIVISION

Administration/Budget Department Approval

OFMB Department - Posted

By Board of County Commissioners

At Meeting of

Tuesday, July 2, 2024

Deputy Clerk for the

Board of County Commissioners

5/20/24

6/5/24

STATE OF FLORIDA, COUNTY OF PALM BEACH
I, JOSEPH ABRUZZO, Clerk of the Circuit Court &
Comptroller certify this to be true and correct
of the original filed in my
on
dated at West Palm Beach, FL on
By: Deputy

JUL 02 2024