



Federal Aviation
Administration

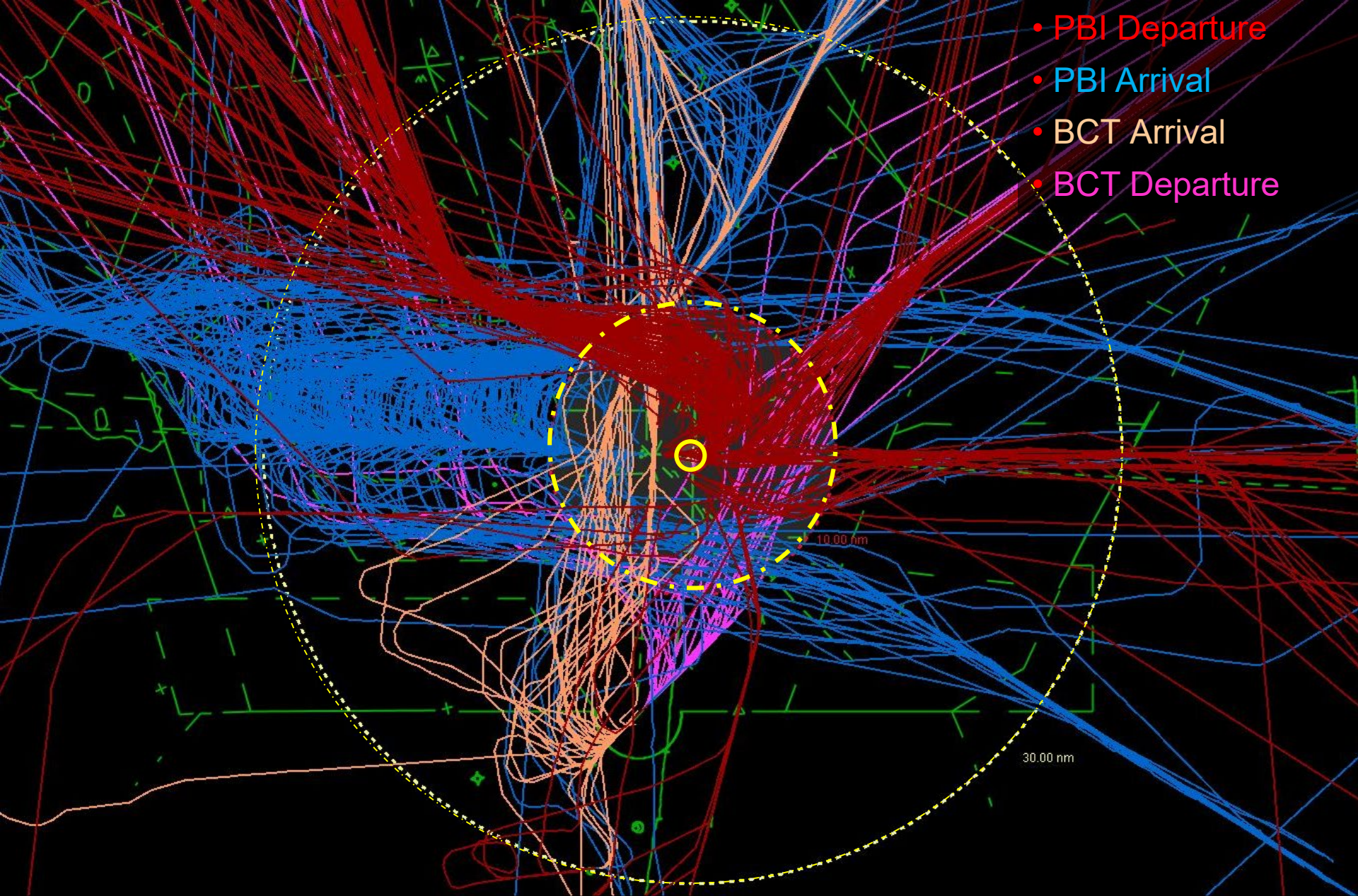
MAR-A-LAGO TFR PROCEDURES

Presented to: Stakeholders

By: PBI ATC

Date: January 2025





- PBI Departure
- PBI Arrival
- BCT Arrival
- BCT Departure



POTUS VISIT TFR NOTIFICATION

- Notification — FAA Security or USSS
 - ❖ Unofficial — preliminary work behind scenes
 - ❖ Official – Start contacts/coordination (3-5 days)
 - ❖ PBI Network – Email blast
 - ❖ PBI Outreach – Phone call to airports inside or near TFR
 - ❖ FAA Safety Team – FAST email Blast
 - ❖ NOTAM no Sooner than 72 Hours (Official Notification)



The TFR

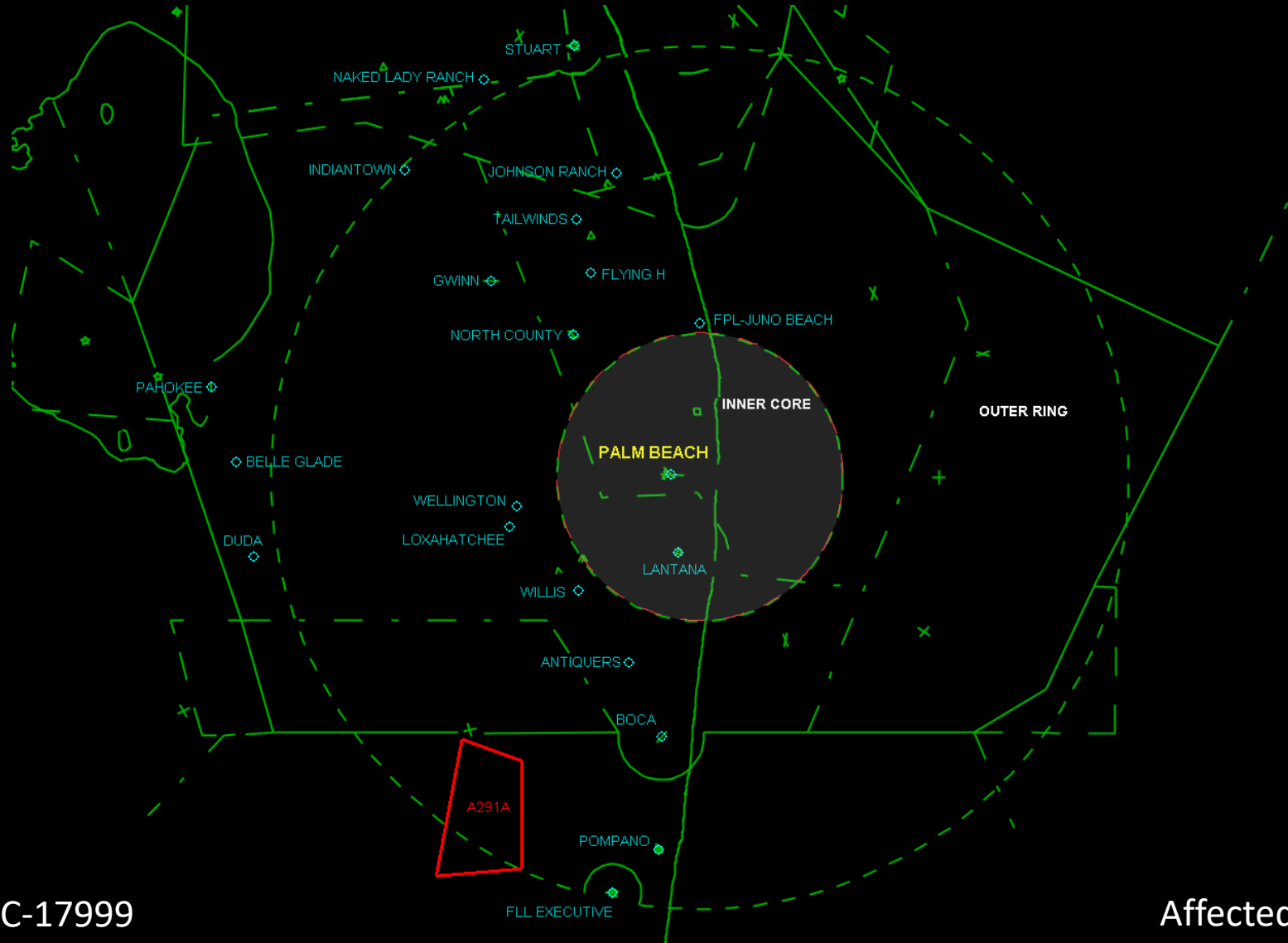


TFR KNOWNNS

- TFR only in effect when President is in town.
- Known TFR Center Point (repeatable)
- Defined TFR
 - 10 NM Inner Core
 - 10 – 30 NM Outer Core
 - SFC –17,999 MSL
- **Primary TFR is consistent**
- Secondary TFRs – minimized by USSS



MAR-A-LAGO TFR



Affected Airports

TFRs SFC-17999



TFR Inner Core

➤ 10 NM Radius SFC to 17,999

ALL AIRCRAFT OPERATIONS ARE **PROHIBITED** EXCEPT FOR:

- ❖ MILITARY AIRCRAFT DIRECTLY SUPPORTING USSS AND THE OFFICE OF THE PRESIDENT OF THE UNITED STATES.
- ❖ COORDINATED and APPROVED **LAW ENFORCEMENT, AIR AMBULANCE AND FIREFIGHTING OPERATIONS** MUST RECEIVE APPROVAL PRIOR TO ENTERING THIS AIRSPACE
- ❖ REGULARLY SCHEDULED COMMERCIAL PASSENGER AND ALL-CARGO CARRIERS OPERATING UNDER TSA-APPROVED STANDARD SECURITY PROGRAMS AND ARE ARRIVING INTO AND/OR DEPARTING FROM 14 CFR PART 139 AIRPORTS.



TFR Gateway Procedures

- ❖ Inbound gateway screening **HPN, TEB, IAD, MCO, and FLL**
- ❖ Outbound; **4** gateway locations at West Palm Beach, FL (PBI) for aircraft departures (Atlantic, Jet, Net Jets, Signature).
- ❖ TSA screening will be available between **0800-1700 local**.
- ❖ Aircraft operators must register with TSA for gateway screening no less than **24 hours** prior to their scheduled departure time. Reservations for screening may be made by calling TSA at **561-227-5020**.
- ❖ On departure from a gateway airport to PBI aircraft must maintain radio contact with ATC and continuously squawk an ATC assigned discrete code. Intermediate stops while enroute are not authorized unless an emergency exists.
- ❖ Once processed by TSA; TSA will broadcast aircraft identification, ATC squawk, and intentions over DEN



TFR PBI Airport Restrictions

- ❖ **Expect Ramp Freeze 7 minutes prior to VIP arrival.**
- ❖ Runway sweep will be completed prior to VIP arrival. After the sweep is complete, no aircraft can utilize that (or any intersecting runway).
- ❖ *Once the VIP leaves the airport property, the ramp freeze will terminate and the airport will resume normal operations (a cordon area will be around AF1) and will remain sterile.*
Note: If a pre-TSA screened aircraft is holding and reaches minimum fuel or divert fuel, notify ATC. We may be able to let you land on a case-by-case basis, subject to USSS approval.
- ❖ A ramp freeze will commence a few minutes prior to the VIP entering the airport property.
- ❖ Runway sweep will be completed prior to VIP departure. After the sweep is complete, no aircraft can utilize that (or any intersecting runway).
- ❖ Once VIP departures, PBI airport returns to normal operations.



TFR Outer Ring

- 10 - 30 NM Radius SFC to 17,999
- ❖ All aircraft operating within the outer ring(s) are limited to aircraft arriving or departing local airfields
- ❖ Workload permitting, ATC may authorize transit operations.
- ❖ Aircraft may not loiter.
- ❖ All aircraft must be on an **active IFR or a FILED VFR flight plan** with a **discrete code** assigned by an ATC facility. Aircraft must be squawking the discrete code prior to departure and at all times while in the TFR and must remain in **two-way radio communications** with ATC.



TFR PROHIBITIONS

THE FOLLOWING OPERATIONS ARE **NOT AUTHORIZED** WITHIN THIS TFR:

- ❖ FLIGHT TRAINING; PRACTICE INSTRUMENT APPROACHES
- ❖ AEROBATIC FLIGHT; GLIDER OPERATIONS
- ❖ PARACHUTE OPERATIONS; ULTRALIGHT; HANG GLIDING
- ❖ BALLOON OPERATIONS
- ❖ SIGHTSEEING OPERATIONS
- ❖ MAINTENANCE TEST FLIGHTS
- ❖ RADIO CONTROLLED MODEL AIRCRAFT OPERATIONS or MODEL ROCKETRY
- ❖ UNMANNED AIRCRAFT SYSTEMS (UAS)
- ❖ ***BANNER TOWING OPERATIONS**
- ❖ ***AGRICULTURE/CROP DUSTING; ANIMAL POPULATION CONTROL FLIGHT**
- ❖ ***UTILITY AND PIPELINE SURVEY OPERATIONS**
 - *Case by Case Basis**
 - *TFR Local Flight Request**
 - *Operational Transponder Required***



How Do I Fly

- **Constantly Check NOTAMS for any Updates**
- **File VFR or IFR flight Plan**
- **Obtain a Mode Three code and Frequency from ATC**
 - Contact PBI TRACON **561-684-9047** or **561-275-1430**
 - Have Flight Service contact PBI (slow process, not recommended)
- **Squawk code on departure**
- **Establish Communication with ATC ASAP**
- **Do not head toward the 10 mile inner core**
- **Straight, Level, and Predictable**



TFR Local Flight Request

PBI TFR LOCAL FLIGHT REQUEST		
Date	_____	
Time of Flight	_____	
Company Name & Purpose of Flight	_____	
Pilot Name	_____	
Pilot Phone Number (to immediately terminate flight if required by USSS)	_____	
Call Sign	_____	
Departure Airport or Location	_____	
Route of Flight / Destination	_____	
Flight Plan filed with FSS	Yes ___	No ___
Radio	Yes ___	No ___
Transponder Equipped	Yes ___	No ___
Google Earth Map with Route Provided in this Request	Yes ___	No ___
Person Making Request- Contact Information	Phone: _____	
	Email: _____	
SUBMIT REQUESTS 24 HOURS IN ADVANCE		
◇ Monday - Friday from 7:00 – 3:00 in advance via email to all of the following email addresses: Enrique.Rivera@faa.gov, Ravel.Savage@faa.gov, Mark.Siviglia@faa.gov		
◇ Other requests should be made by: Fax this worksheet & Google Earth Map Then call the TRACON Watch Supervisor		
	Fax (561) 275-1498	Phone (561) 684-9047



How Do I Fly

- Remain outside the 30 NM TFR ring until established on assign code, communication with ATC, and radar contact (flight following)
- When radar service is terminated, do not squawk VFR in the TFR. Should hear “Remain on present code (squawk), radar service terminated, frequency change approved.
- Remember even on the ground, do not squawk VFR

PBI FREQUENCIES: North--128.3 / South—125.2



Banner Tow Ops – Outer Core Only

- ❖ Advance coordination with USSS/FAA of airport / location improves probability of approval - site visit likely.
- ❖ Submit PBI TFR Local Flight Request - include map of path and map of pattern flight path for pick up & to drop the banner
- ❖ Provide list of flights schedule each day
- ❖ Aircraft equipped with operational radio and transponder
- ❖ Call PBI TRACON no sooner than 30 minutes prior to proposed departure time. 561-684-9047. Request your VFR squawk code.
- ❖ Outer Core Only - Squawk, talk, on filed flight plan
- ❖ Depart airport in outer core, make one safe maneuver back to airport and pick up banner
- ❖ Arrival to airport located in outer core, fly over airport and drop banner and then land
- ❖ Travel straight, level, predictable to exit TFR on approved route
- ❖ Loitering in TFR is not authorized
- ❖ Pilot required to call USSS prior to departure



INTERCEPTED

What do I do?

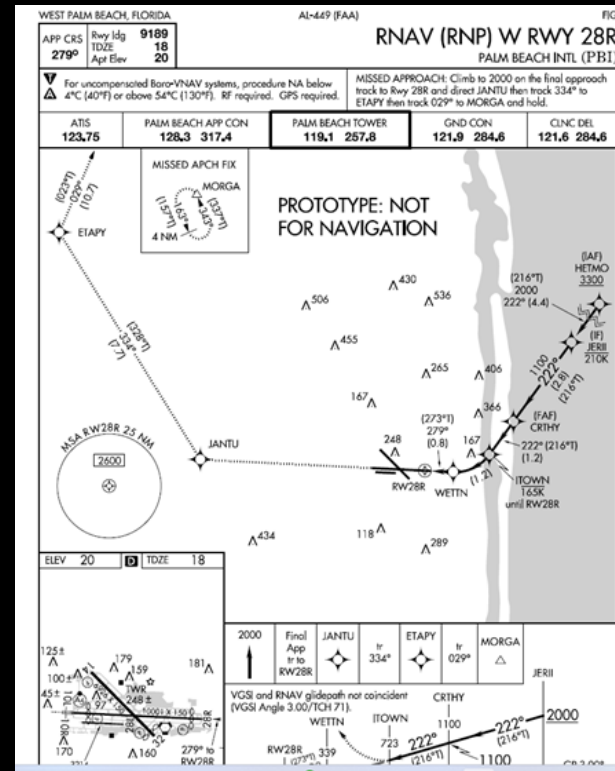
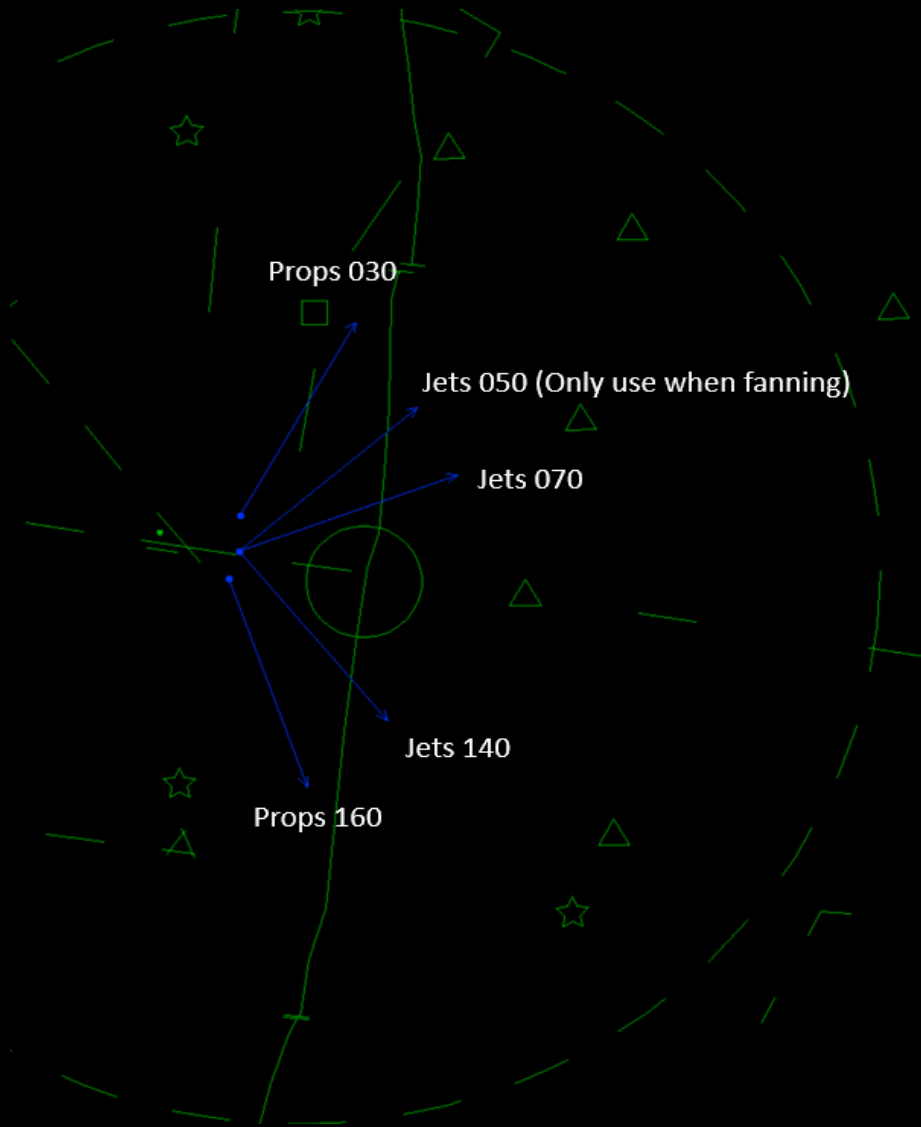


- Remain Calm
- Establish contact on **121.5**, Fighter/Helicopter/ATC
- Follow Instructions

TFR Departure / Arrivals

West Arrivals - Expect Rwy 32
(when VIP is at residence).

RNP W, RNAV X in development





QUESTIONS ?

