

Citizens' Committee on Airport Noise

May 21, 2026

County/Department of Airports Update

Palm Beach International Airport

PRESENTED TO:

**Palm Beach International Airport (PBI)
Citizens' Committee on Airport Noise (CCAN)**

PRESENTED BY:

Palm Beach County Department of Airports





AGENDA

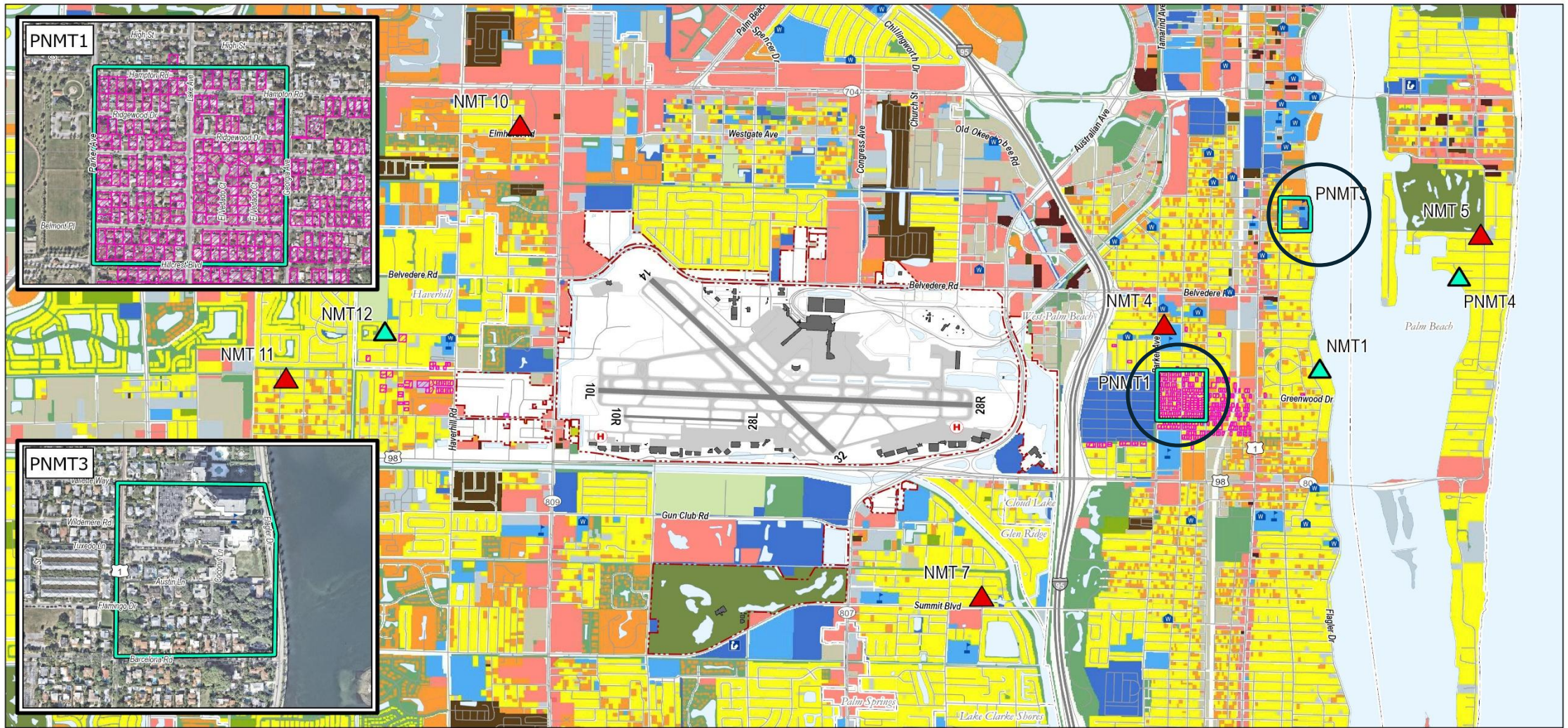
- County Litigation Update
- Noise Monitor Terminal (NMT) Installation Progress Report
- Noise Contour Discussion
- Status Update on Runway 10L Departures to South
- Vertiport Development Update
- Remaining 2026 CCAN Meeting Schedule



County Litigation Update



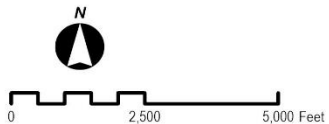
Noise Monitor Terminal (NMT) Installation Progress Report



- | | | | |
|---|--------------------|-------------------------------|----------------------------------|
| PBI Airport Boundary (Approximate) | Highway | Residential | Agricultural |
| Runway / Pavement | Major Roads | Multi-Family Residential | Recreational / Open Space / Golf |
| Helicopter Pad Location | Minor Roads | Mobile Home Park | Commercial Use |
| NMT Location January 26 CCAN | Railroad | Transient Lodging | Manufacturing and Production |
| NMT Location February 26 CCAN | Municipal Boundary | Mixed Use | Vacant / Undefined |
| Potential NMT Location February 26 CCAN | | Public Use (Non-Compatible) | Water / Stream |
| | | Public Use (Compatible) | Sound Insulated Property |
| | | School / College / University | Place of Worship |
| | | Library | Hospital |

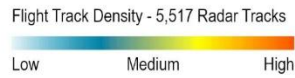
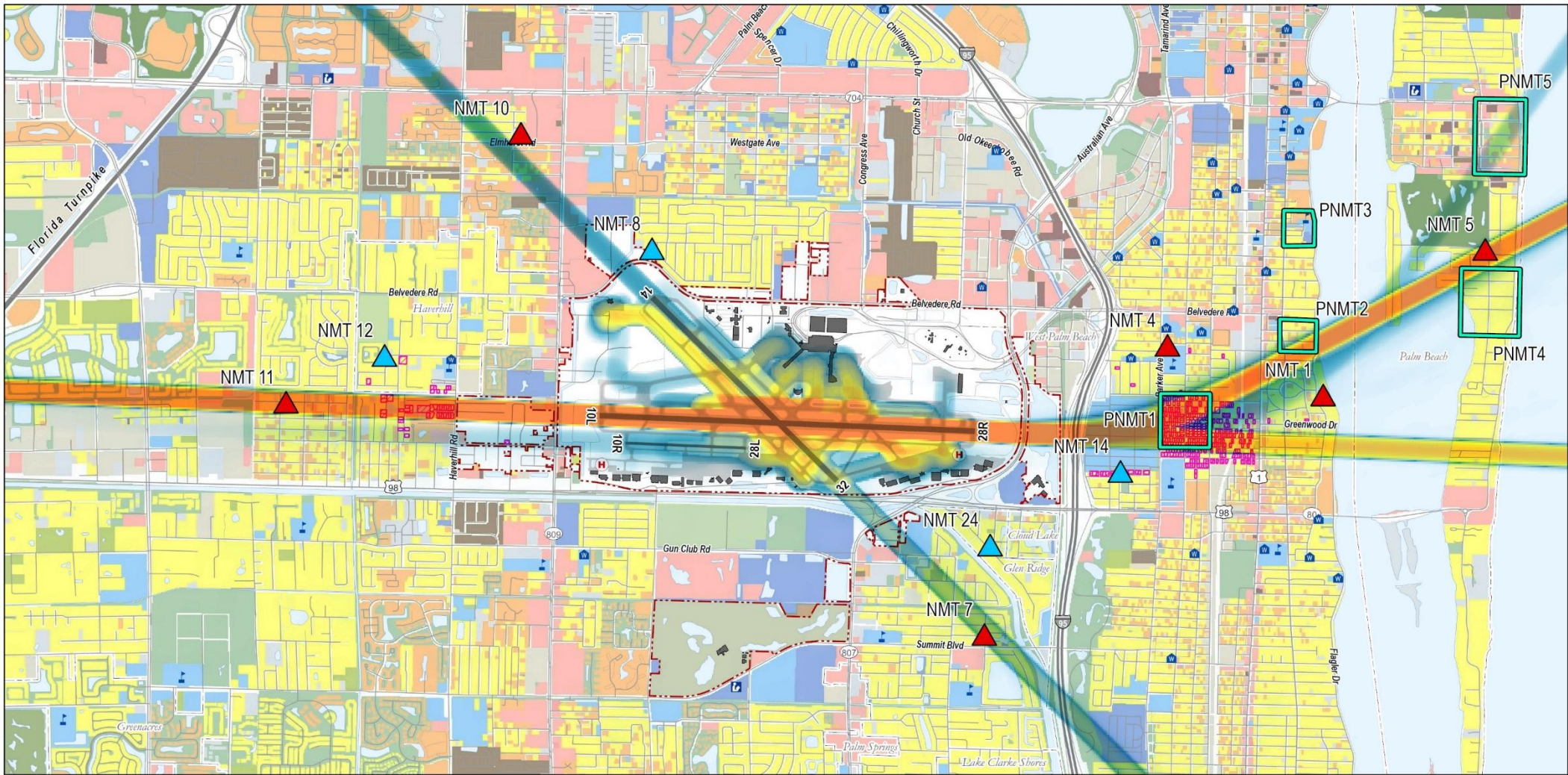


Palm Beach International Airport



Noise Monitoring Locations





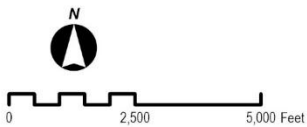
- PBI Airport Boundary (Approximate)
- Runway / Pavement
- Helicopter Pad Location
- Recommended NMT Location
- Prior NMT Location
- Potential NMT Location

- Highway
- Major Roads
- Minor Roads
- Railroad
- Municipal Boundary

- Residential
- Multi-Family Residential
- Mobile Home Park
- Transient Lodging
- Mixed Use
- Public Use (Non-Compatible)
- Public Use (Compatible)

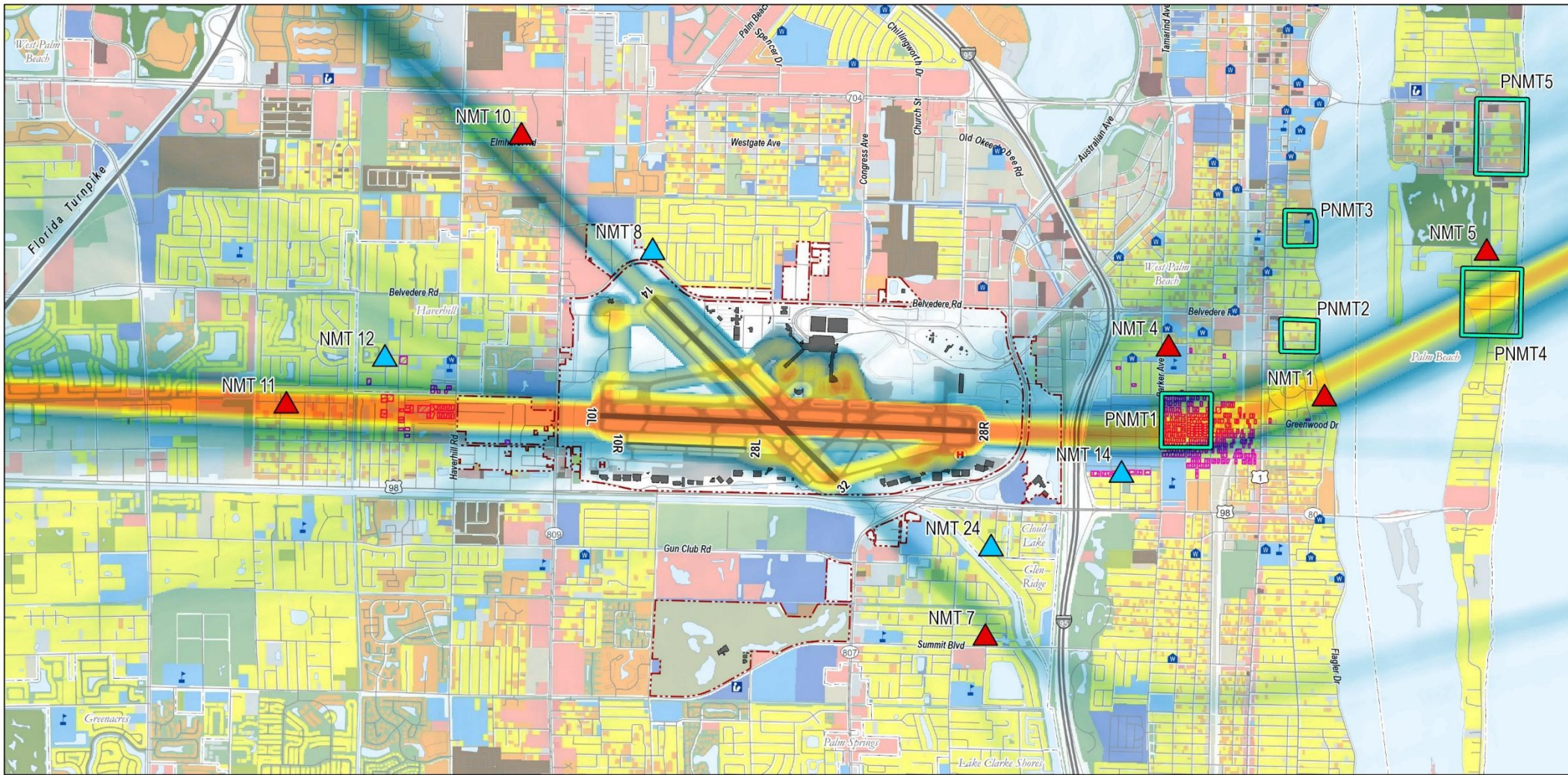
- Agricultural
- Recreational / Open Space / Golf
- Commercial Use
- Manufacturing and Production
- Vacant / Undefined
- Water / Stream
- Sound Insulated Property

- School / College / University
- Library
- Place of Worship
- Hospital



2026 Arrival Flight Track Density
(1-23-2026 through 2-13-2026)





Flight Track Density - 5,697 Radar Tracks
 Low Medium High

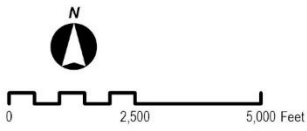
- PBI Airport Boundary (Approximate)
- Runway / Pavement
- Helicopter Pad Location
- Recommended NMT Location
- Prior NMT Location
- Potential NMT Location

- Highway
- Major Roads
- Minor Roads
- Railroad
- Municipal Boundary

- Residential
- Multi-Family Residential
- Mobile Home Park
- Transient Lodging
- Mixed Use
- Public Use (Non-Compatible)
- Public Use (Compatible)

- Agricultural
- Recreational / Open Space / Golf
- Commercial Use
- Manufacturing and Production
- Vacant / Undefined
- Water / Stream
- Sound Insulated Property

- School / College / University
- Place of Worship
- Library
- Hospital



2026 Departure Flight Track Density
 (1-23-2026 through 2-13-2026)





Noise Contour Discussion

2026 Average Day DNL Noise Contour

Presentation to Palm Beach County Citizens Committee on Airport Noise (CCAN)

Presented by Robert Mentzer Jr., HMMH

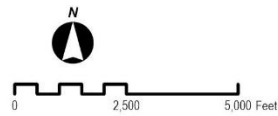
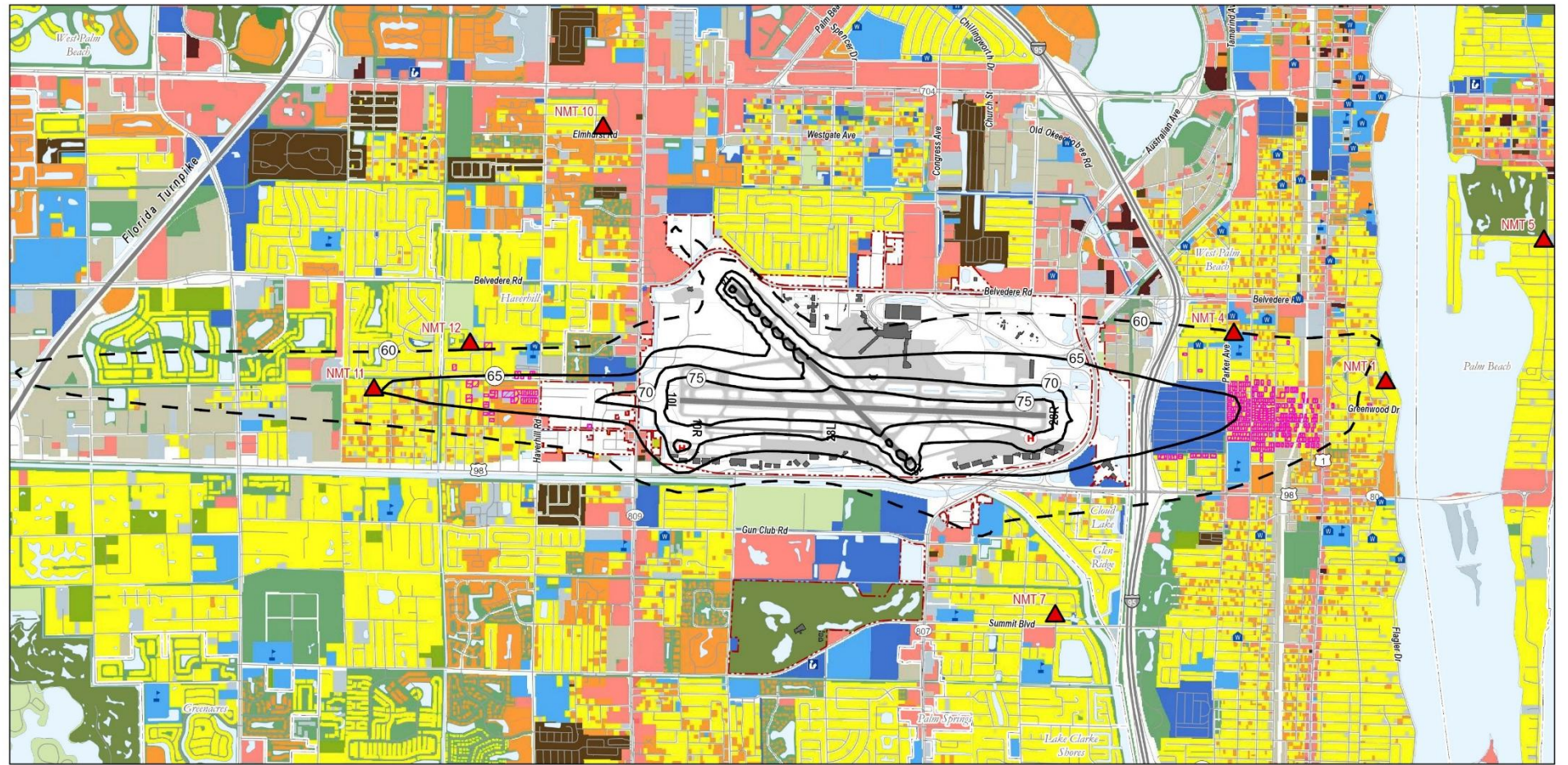
May 21, 2026

2026 Average Day DNL Contour

- CCAN requested to see Day-Night Average Sound Level (DNL) contours since January 22, 2026 (new procedures went into effect).
- Radar data from 1/22/2026 through 4/30/2026 was used
 - Busy season - Average Day operations higher than 2024 Annual
 - Reflects Higher East Flow operations (15% higher than 2024 Annual)
 - Higher use of fanned departures in March and April
 - DNL 65 wider to the east and extends just beyond Parker Ave.
 - DNL 60 bends to the northeast but does not extend into the Intracoastal

Aircraft Category	2024 Average Annual Day Modeled Operations (366 days)	2026 Average Annual Day Modeled Operations (99 days)
Air Carrier	170.2	218.4
Air Taxi	150.0	148.7
General Aviation	155.9	168.9
Military	5.1	1.5
Total	481.2	537.4

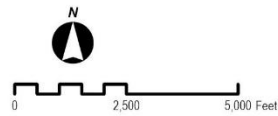
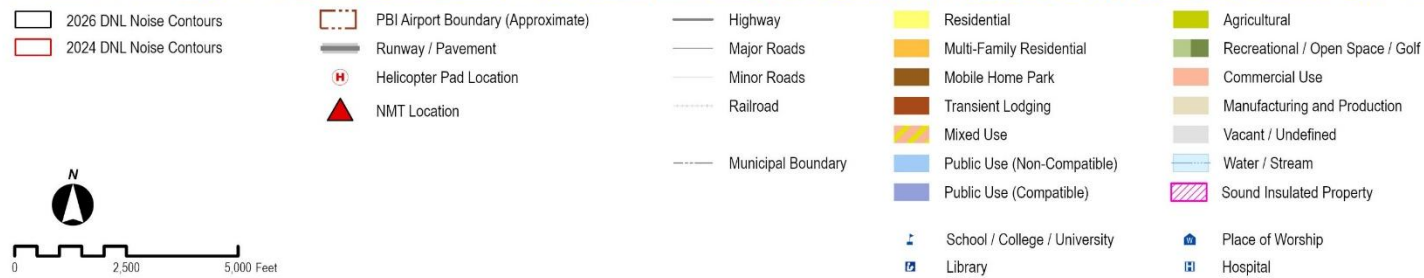
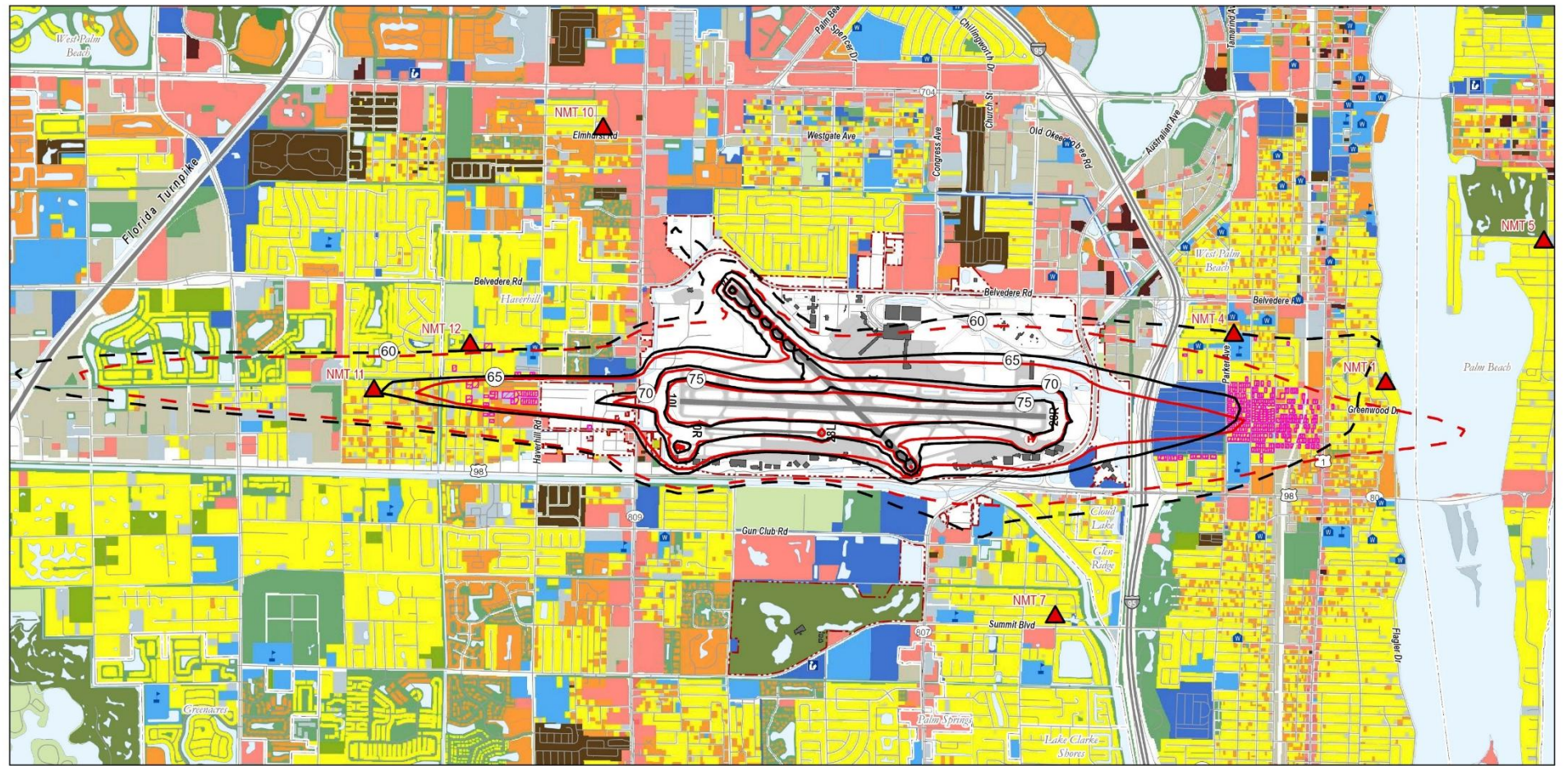
PBI 2026 Average Day DNL Noise Contours



Existing Land Use with 2026 DNL Noise Contours
(1/22/2026 – 4/30/2026)



PBI 2026 Average Day DNL Contours compared to PBI 2024 Annual DNL Contours



Existing Land Use with 2026 DNL Noise Contours and 2024 DNL Noise Contours



Questions?

Robert Mentzer

HMMH

rmentzer@hmmh.com

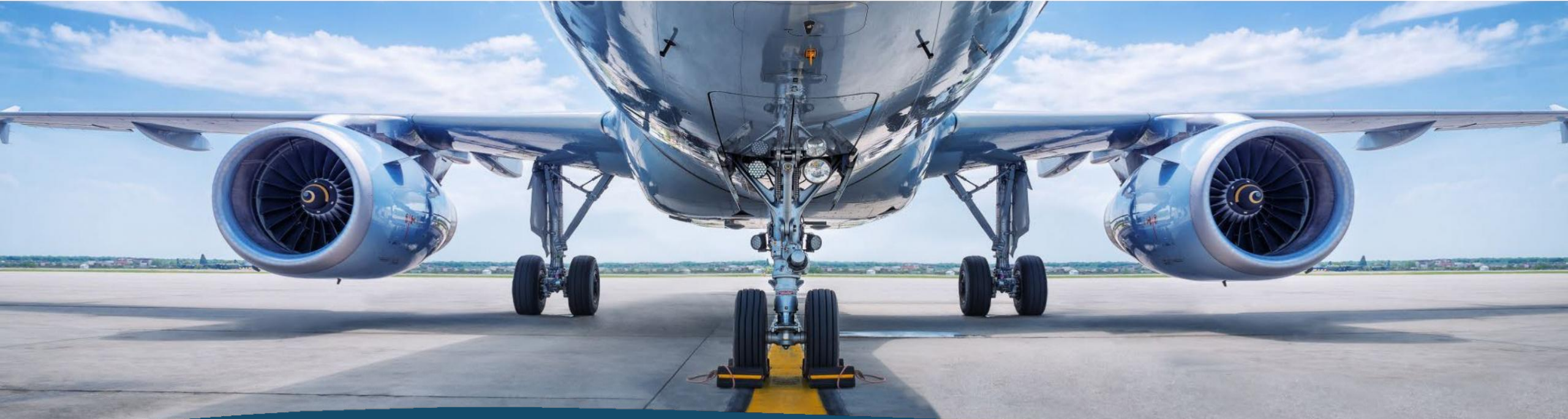
Thank you!



Status Update on Runway 10L Departures to South



Vertiport Development Update



Remaining 2026 CCAN Meeting Schedule

2026

Holidays & Observances

January

Su	M	Tu	W	Th	F	Sa
			1	2	3	
4	5	6	7	8	9	10
11	12	13	14	15	16	17
18	19	20	21	22	23	24
25	26	27	28	29	30	31

February

Su	M	Tu	W	Th	F	Sa
1	2	3	4	5	6	7
8	9	10	11	12	13	14
15	16	17	18	19	20	21
22	23	24	25	26	27	28

March

Su	M	Tu	W	Th	F	Sa
1	2	3	4	5	6	7
8	9	10	11	12	13	14
15	16	17	18	19	20	21
22	23	24	25	26	27	28
29	30	31				

April

Su	M	Tu	W	Th	F	Sa
			1	2	3	4
5	6	7	8	9	10	11
12	13	14	15	16	17	18
19	20	21	22	23	24	25
26	27	28	29	30		

May

Su	M	Tu	W	Th	F	Sa
					1	2
3	4	5	6	7	8	9
10	11	12	13	14	15	16
17	18	19	20	21	22	23
24	25	26	27	28	29	30
31						

June

Su	M	Tu	W	Th	F	Sa
	1	2	3	4	5	6
7	8	9	10	11	12	13
14	15	16	17	18	19	20
21	22	23	24	25	26	27
28	29	30				

July

Su	M	Tu	W	Th	F	Sa
			1	2	3	4
5	6	7	8	9	10	11
12	13	14	15	16	17	18
19	20	21	22	23	24	25
26	27	28	29	30	31	

August

Su	M	Tu	W	Th	F	Sa
						1
2	3	4	5	6	7	8
9	10	11	12	13	14	15
16	17	18	19	20	21	22
23	24	25	26	27	28	29
30	31					

September

Su	M	Tu	W	Th	F	Sa
		1	2	3	4	5
6	7	8	9	10	11	12
13	14	15	16	17	18	19
20	21	22	23	24	25	26
27	28	29	30			

October

Su	M	Tu	W	Th	F	Sa
				1	2	3
4	5	6	7	8	9	10
11	12	13	14	15	16	17
18	19	20	21	22	23	24
25	26	27	28	29	30	31

November

Su	M	Tu	W	Th	F	Sa
1	2	3	4	5	6	7
8	9	10	11	12	13	14
15	16	17	18	19	20	21
22	23	24	25	26	27	28
29	30					

December

Su	M	Tu	W	Th	F	Sa
		1	2	3	4	5
6	7	8	9	10	11	12
13	14	15	16	17	18	19
20	21	22	23	24	25	26
27	28	29	30	31		

- Jan 01** New Year's Day
- Jan 19** Martin Luther King Day
- Feb 14** Valentine's Day
- Feb 16** President's Day
- Feb 17** Chinese New Year
- Feb 18** Ramadan begins
- Feb 18** Ash Wednesday
- Mar 17** St. Patrick's Day
- Mar 20** March equinox (GMT)
- Apr 01** April Fool's Day
- Apr 02** Passover
- Apr 05** Easter
- Apr 22** Earth Day
- Apr 22** Admin Assistants Day
- May 05** Cinco de Mayo
- May 10** Mother's Day
- May 24** Pentecost
- May 25** Memorial Day
- Jun 14** Flag Day
- Jun 19** Juneteenth
- Jun 21** Father's Day
- Jun 21** June Solstice (GMT)
- Jul 04** Independence Day
- Sep 07** Labor Day
- Sep 12** Rosh Hashanah
- Sep 23** September equinox (GMT)
- Oct 12** Federal Holiday
- Oct 31** Halloween
- Nov 11** Veterans Day
- Nov 26** Thanksgiving
- Dec 04** Hanukkah begins
- Dec 21** December Solstice (GMT)
- Dec 25** Christmas Day
- Dec 26** Kwanzaa begins
- Dec 31** New Year's Eve

Citizens' Committee on Airport Noise