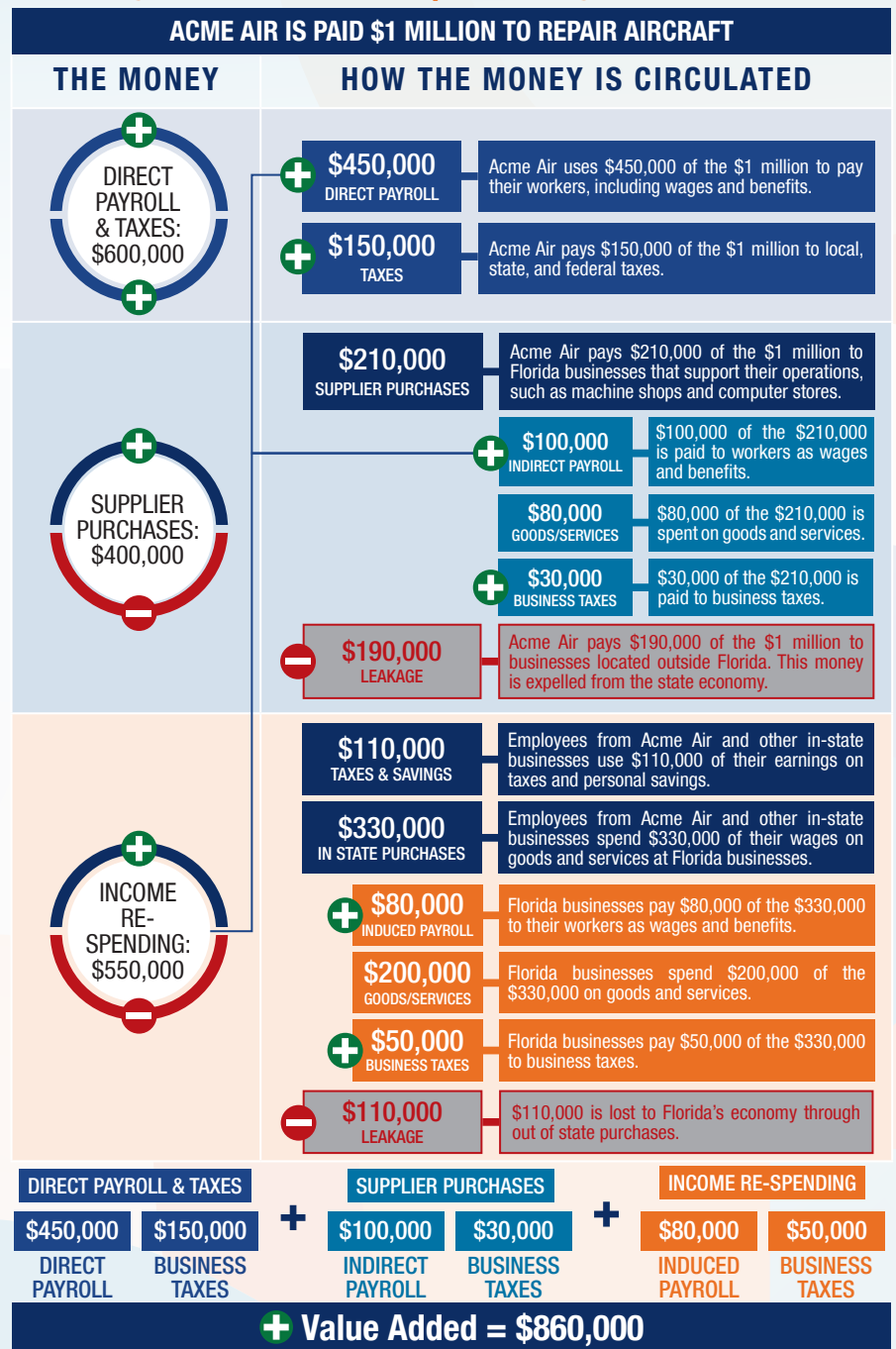


The following graphic is an example of how activity at Florida airports generates economic impacts throughout the state.



## THE ECONOMIC IMPACT OF

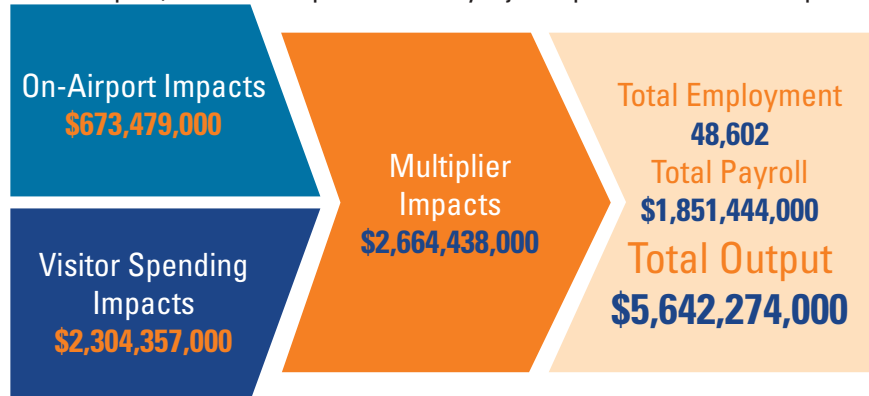
# Palm Beach International Airport (PBI)



## PALM BEACH INTERNATIONAL AIRPORT

Palm Beach International Airport is located in Palm Beach County, about three miles south of downtown West Palm Beach. The airport has three runways, with the longest runway measuring 10,001 feet. The airport can accommodate a full range of commercial and general aviation aircraft. The airport has nearly 200 daily non-stop flights to nearly 30 destinations in the U.S., Canada, and the Caribbean. The airport also offers flights from ultra-low-cost carriers.

PBI is the primary commercial service airport for Palm Beach County. The airport is one of three commercial service airports serving the southeast Florida metropolitan area. The airport is an attractive option for travelers looking to avoid hectic traffic and lines. The airport supports businesses and cargo activities, including FedEx Express and UPS Airlines. The airport also supports fire protection and emergency medical services. The Palm Beach County Fire Rescue Aviation Battalion is located between runways at the airport. The Trauma Hawk medical evacuation facility is also housed at the airport, which transports critically injured patients to area hospitals.



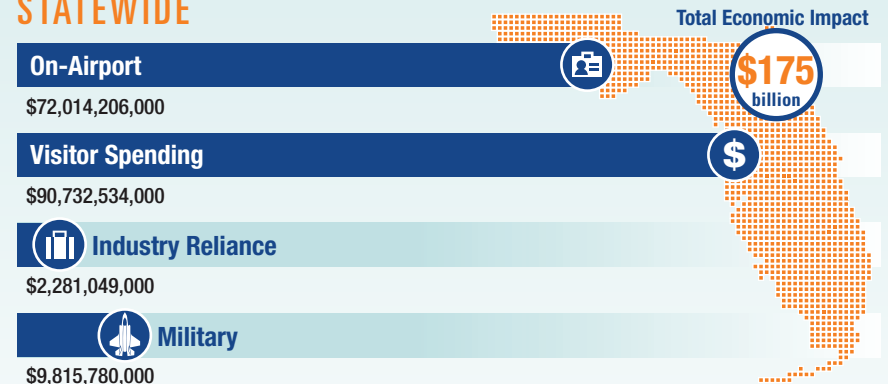
Previous versions of this Study used different terminology to communicate results. The following terms were updated: Direct Impacts changed to On-Airport Impacts and Indirect Impacts changed to Visitor Spending Impacts.

## Florida's Statewide Benefits From Aviation

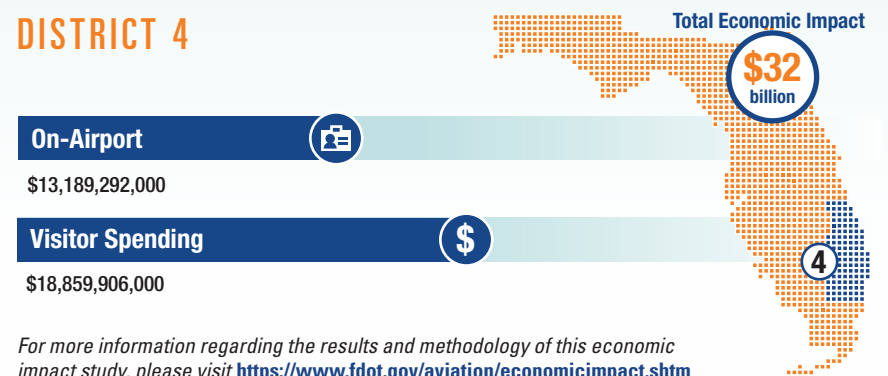
**Florida realizes significant economic benefits from aviation.** The Florida Department of Transportation completed a comprehensive economic impact analysis to measure these benefits. Benefits measured in the FDOT study considered on-airport impacts, visitor spending impacts, and multiplier impacts.

Florida's 129 public-use airports (including 20 commercial service facilities) are a major economic engine of the State's economy. The aviation system keeps Florida connected to the global marketplace while simultaneously driving local economies. Florida's airports provide space and infrastructure for important activities such as manufacturing, logistics, tourism, and emergency response. Below is a summary of the total statewide economic impact as well as the impact of District 4.

### STATEWIDE



### DISTRICT 4



For more information regarding the results and methodology of this economic impact study, please visit <https://www.fdot.gov/aviation/economicimpact.shtm>