

CONSULTANT SERVICES AUTHORIZATION

PROJECT NUMBER: Task No. III-23-PBI-R-040
PROJECT NAME: Terminal Connector: Advanced Concept

THIS AUTHORIZATION Task No III-23-PBI-R-044 to the Agreement dated May 7, 2019 (R-2019-0612) and amended by Amendment No 1 dated May 5, 2020 (R-2020-0414), Amendment No 2 dated October 20, 2020 (R-2020-1607), and Amendment No 3 dated May 4, 2021 (R-2021-0576), Amendment No 4 dated June 15, 2021 (R-2021-0844), Amendment No 5 dated March 22, 2022 (R-2022-0263), and Amendment No 6 dated January 24, 2023 (R-2023-0103) between the COUNTY and the CONSULTANT, (District: Countywide) identified herein as for the Additional Services described in Item 4 of this Authorization:

1. CONSULTANT: RS&H, Inc.
2. ADDRESS: 3125 West Commercial Boulevard
Suite 130
Fort Lauderdale, Florida 33309

3. CONSULTANT shall begin work promptly after receipt of an executed copy of this authorization on the requested Additional Services and upon receipt of a Notice-to-Proceed.

4. Description of Additional Services to be provided by CONSULTANT: RS&H, Inc shall provide professional services for the Task III-23-PBI-R-040: Terminal Connector: Advanced Concept.

5. The compensation to be paid CONSULTANT for providing the requested services shall be:

- [X] A. Lump Sum Fee of \$ 96,773.16.
[] B. Time and Materials Fee of a Not-to-Exceed amount of \$
[] C. Reimbursable Expenses Not-to-Exceed \$
[] D. Lump Sum Expenses of \$

This project will be assigned Task No. III-23-PBI-R-040 with a total cost of \$ 96,773.16.

Table with 2 columns: Contract ID and Percentage. Rows include Contract R-2019-0612 DBE Participation (20.61%), Contract R-2020-0414 DBE Participation (to-date) (26.35%), Contract R-2020-1607 DBE Participation (to-date) (54.03%), Contract R-2021-0844 DBE Participation (to-date) (19.08%), Contract R-2022-0263 DBE Participation (to-date) (41.08%), Contract R-2023-0103 DBE Participation (to-date) (53.11%), Total Contract DBE Participation (to-date) (35.21%), and DBE Participation this Task (9.22%).

All terms of original agreement shall apply to this authorization. Attachments:

- 1. Exhibit A – RS&H Proposal (Scope and Fee) dated March 29, 2023
2. Schedule 1(A) – List of Proposed DBE Firms
3. Project Summary Report

IN WITNESS WHEREOF, this Authorization is accepted this ___ day of ___, 2023, subject to the terms and conditions of the aforementioned Agreement.

CONSULTANT: Pat Hargrove
SIGNED: Pat Hargrove
TYPED NAME: Pat Hargrove
TITLE: Vice President, Aviation
DATE: 3/29/2023

COUNTY:
SIGNED: [Signature]
TYPED NAME:
TITLE:
DATE: 4/5/23

APPROVED BY THE CONTRACT REVIEW COMMITTEE:

SIGNATORY AUTHORIZATION(S)



3125 W Commercial Blvd
Suite 130
Fort Lauderdale, FL 33309

O 954-474-3005
F 954-474-3006
rsandh.com

CORPORATE RESOLUTION
AUTHORIZING SIGNATORY FOR
PALM BEACH COUNTY CONTRACTS

I, John J. Bottaro, the undersigned Corporate Secretary of RS&H, Inc., a Florida Corporation (the "Corporation"), hereby certify that: The Corporation is duly organized and existing under the laws of the State of Florida and the following is a true, accurate and complete transcript of a resolution contained in the minute book of the Board of Directors of said Corporation duly held on the 30th day of January, 2019, at which meeting there was present and acting throughout a quorum with full power and authority to adopt this resolution and confer the powers granted to the person hereinafter described, and that the proceedings of said meeting were in accordance with the charter and by-laws of said Corporation, and that said resolution has not been amended or revoked and is in full force and effect:

RESOLVED, that Patrick H. Hargrove, Vice President of the Corporation, is hereby authorized and empowered to execute in the name of the Corporation all proposals, agreements, supplements, contracts, and other documents he may deem necessary or appropriate, in connection with Palm Beach County, Florida.

IN WITNESS WHEREOF, I have executed my name as Assistant Corporate Secretary, and affixed the seal of the Corporation, this 18th day of April, 2019.

DocuSigned by:

John Bottaro

E145939C0B964A5...

John J. Bottaro
Corporate Secretary

DocuSigned by:



SCOPE AND FEE

Terminal Connector: Advanced Concept Scope of Work

Version 1.0

March 29, 2023

Palm Beach County (PBC) Department of Airports (DOA)
West Palm Beach, FL

Task Authorization No.: III-23-PBI-R-040

RS&H Project No.: 2006-3101-010 / -040

Prepared by RS&H, Inc. at the
direction of PBC DOA.

I PROJECT DESCRIPTION

The PBC DOA (Airport) has requested that RS&H, Inc. (Consultant) under the Agreement with RS&H for Airport Facilities and System Consulting Services for Palm Beach County Department of Airports Project No. DOA 18-2A provide a scope and fee for a design phase of a modification to the 2-story area between Concourse A/B and Concourse C to include an airside corridor, i.e., Terminal Connector (Project).

The following professional disciplines/services/specialties are expected to play a significant role in the development of the Project:

- » Project Management
- » Architectural Design
- » Architecture/Life Safety
- » Cost Estimating

The Consultant design team is made up of the following professionals:

<u>Consultant/Subconsultant</u>	<u>Involvement</u>
RS&H, Inc.	Project Management, Architectural Design, Architecture/Life Safety
Connico, LLC	Cost Estimating

The Project will be guided and build upon the Planning and Programming Report dated July 26, 2021 completed by RS&H, Inc under PBC DOA Task I-20-PBI-R-014 Terminal Connectors which was a hybrid of the Contract for Consulting / Professional Services of Phase 1A: Planning and Programming and Phase 1B: Conceptual Design.

The scope for the Terminal Connector Program shall include the required elements, systems, equipment, and facilities typical of a Terminal Connector limited to the following items:

- » Modification to the existing interior space for the public circulation and Checkpoints, seating, and art installation zones. This includes flooring, wall and column coverings, ornamentals, ceiling, lighting, special effects, architectural millwork, seating and furnishings (where existing cannot be reused), flight information display systems (FIDS), space for artwork (incorporating existing and new art as selected by the DOA), interior landscaping (Biophilia), and system support for commercial advertising (advertising to be provided by others).
 - Project will replace existing tile flooring with new terrazzo in public circulation and in the stair / escalator areas removing the planters below Escalator F &

- Escalator G/K. Project will include design for flooring within existing main circulation corridor but exclude construction of flooring within construction documents (cost will be captured within estimate).
- Consultant will provide power and communication outlets and raceway / cabling to advertising head end equipment as directed by DOA.
 - » Modifications to existing support spaces including existing Mechanical, Electrical, Plumbing, or IT rooms to support the Terminal Connector project.
 - » Project will reuse existing furniture (where applicable and approved by DOA).
 - » Existing Concession Spaces: Rooney's and Oceanfront
 - Renovation of these spaces to be excluded from this project as intent is to have these spaces fully renovated prior to Terminal Connector construction. Renovation of spaces to be by Concessionaire (NIC).
 - Rooney's is anticipated to be future food / retail space
 - Oceanfront is anticipated to be future coffee / retail space
 - » Existing Concession Spaces south of main circulation:
 - Project will indicate these spaces to be demo'd and all systems supporting concession space will be removed entirely if not able to be modified to support new concession spaces in final layout.
 - » New Concession Spaces:
 - For new concession rooms, project will provide shell space for concessionaire build-out. The project will provide the following:
 - Temporary lighting assumed to be replaced by Concessionaire Contractor
 - Stubbed electrical raceways between concessionaire shell space and new / existing Airport electrical rooms. Electrical Panel within shell space and conductors to be provided by Concessionaire. Concessionaire shall provide estimated conductor(s) sizes for the Consultant to design raceways.
 - Conditioned air supply and return will be provided. Any special HVAC for concessionaire space such as exhaust ventilation for concession kitchens is included.
 - Water supply (cold water) will be capped at concession space. Hot water is assumed to be provided by Concessionaire within space.
 - Sanitary piping will be capped at concessionaire space.
 - Gas (natural gas) will be capped at concessionaire space needing gas for cooking. DOA to let design team know which spaces will need gas.
 - Project will install raceways for telephone/data to nearest DOA IT room for concessionaire communications

- Distribution of utilities within space, interior walls and finishes, millwork, equipment, flooring and ceiling will be by tenant.
- Paging and Speakers for general music is excluded within concession space.
- For new standalone concessions such as the Grab-N-Go or a Bar, project will provide the following as required to support concessionaire:
 - Stubbed electrical raceways between concessionaire space and new / existing Airport electrical rooms. Electrical Panel within shell space (if any) and conductors to be provided by Concessionaire. Concessionaire shall provide estimated conductor(s) sizes for the Consultant to design raceways.
 - Water supply (cold water) will be capped at concession space. Hot water is assumed to be provided by Concessionaire within space.
 - Sanitary piping will be capped at concessionaire space.
 - Project will install raceways for telephone/data to nearest DOA IT room for concessionaire communications.
 - Distribution of utilities within space, millwork, and equipment will be by tenant. Flooring is assumed to be flooring of main circulation.
- » Airport lounge (approximately 5,000 to 6,000 sf):
 - Project assumes treating this space as same as a new concession space room. Kitchen or warming kitchen / food prep and restrooms are assumed to be within lounge. Renovations will be made to the air distribution systems to provide for independent temperature control systems to the airport lounge.
 - Project will include preliminary layout of restroom and kitchen spaces but walls, fixtures, millwork will be excluded from construction documents.
 - Project will include design of structural ceiling but reflected ceiling is excluded and will be provided by future Concessionaire.
- » Future Delta lounge (approx. 10,000 sf):
 - Project will include programming space of future Delta lounge on east end of Connector exterior of existing interior spaces for programming purposes only.
 - Project will include provide capping of utilities / services to support future Delta lounge.
- » Secure exit corridor, employee nonsterile to sterile access and emergency exits.
- » Mechanical systems renovations to the connector area and Checkpoints will include renovations to the air distribution system serving the circulation and open concessions areas.
- » Featured lighting fixtures similar to Concourse B within public space
- » Virtual golf driving range.

- » Plumbing systems renovations to the connector area and Checkpoints will include renovations as noted to support new clearstory roof and as needed to support concessions and new support spaces.
- » Electrical systems renovations to the connector area and Checkpoints include to new lighting, new power distribution system as required by new connector and checkpoint layout, fire alarm system and as required to concessions and new support spaces.
- » Low-voltage system renovations to the connector area and checkpoints include IT/Infrastructure support, Flight Information Displays, Public Address system and Security (Access Control, Video Surveillance and Intrusion Detection).
- » Replace skylight in main connector with clearstory element.
- » Renovation of DOA/Tenant space north of existing public circulation will remain as is, and thus not in the scope of work except for relocated concessionaires.
- » Coordination with PBC DOA concessionaire programming design firm (Air Projects).
- » Incorporating an emergency exit to the Landside corridor from the airside corridor.
- » Adding (2) new airside restrooms in the Terminal Connector corridor
- » Reconfiguring the exit corridors from Concourse A/B and Concourse C to include breach control
- » Relocating TSA security check point at Concourse C for the airside corridor, and analysis if TSA security checkpoint at Concourse C is sized correctly for current and future growth.
- » Extension of Checkpoint A/B queuing as noted in Master Plan.
- » CAST modeling of passenger movement through SSCP C during each phase to determine queuing layout.

Multiple phases of construction are anticipated to minimize the impact to flight and airline operations along with TSA checkpoint screening.

This scope for this Project (DOA Task III-23-PBI-R-040) includes the following design tasks of the overall Program. Subsequent Projects (DOA Tasks) and design phases will follow to further develop overall Program.

- » Task 1: Phase 1B: Advanced Conceptual Design

FIGURE 1: PRELIMINARY CONCEPT PLAN

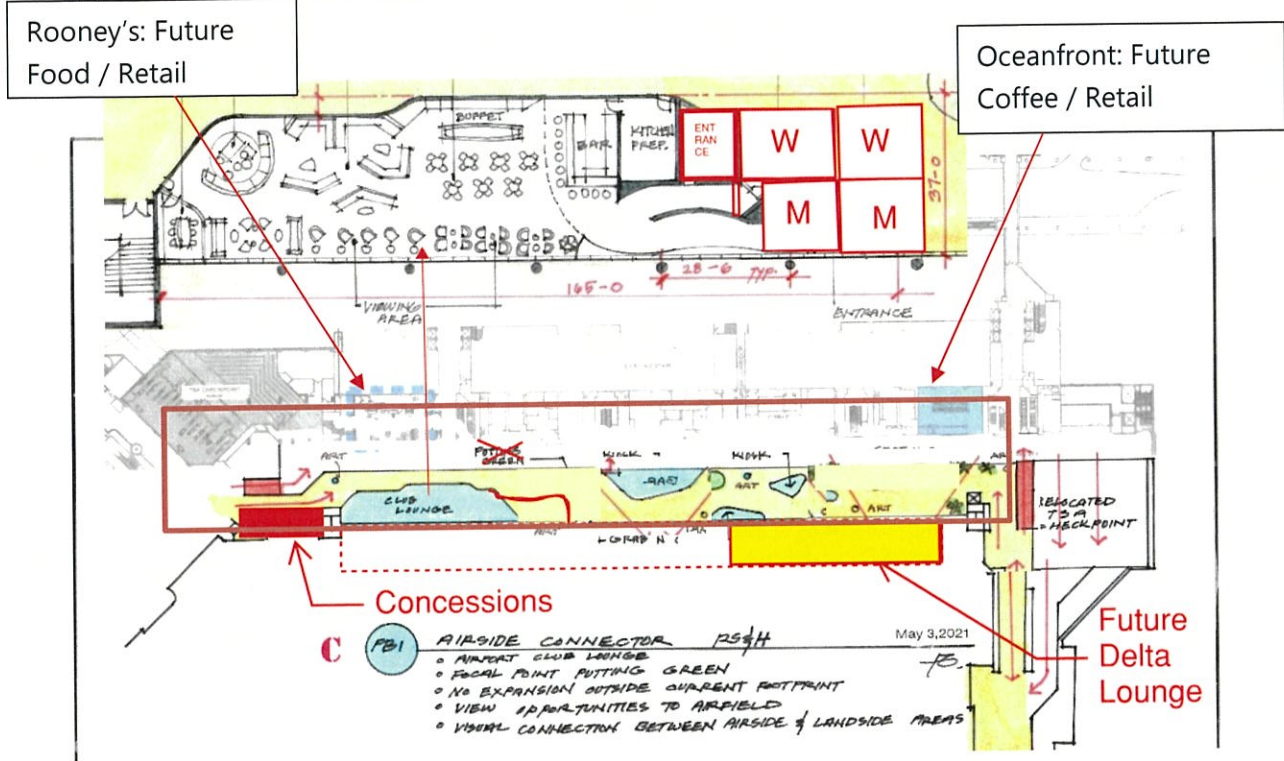
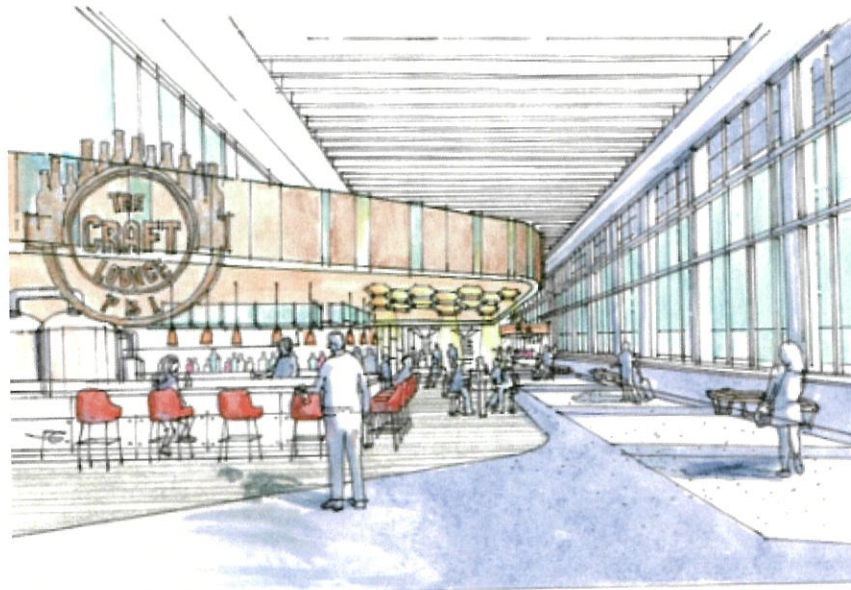


FIGURE 2: PRELIMINARY CONCEPT SKETCH



Funding Expectations – The Planning and Programming Report indicated the estimated construction cost for the Project at approximately \$14.0 million; however due to the current market fluctuations it is anticipated to be above the identified amount and is estimate to be approximately \$25.0-\$30.0 million. The actual cost may vary significantly as the Project design progresses and the scope is further developed. Changes to the project cost may require changes in the Consultant’s efforts and require adjustments to the compensation indicated in this proposal.

Project Duration – The Project’s schedule is defined in the accompanying Project Schedule. The actual schedule may vary as the Project design progresses and the scope is further developed.

II PROJECT TASKS

TASK 1 PHASE1B: ADVANCED CONCEPTUAL DESIGN / DESIGN ANALYSIS CONFIRMATION

Performance of this task includes the development of design concept solutions of Task I-20-PBI-R-014 Terminal Connectors, review and evaluation of the alternatives, and the selection of a direction of focus for subsequent design phases.

Task 1.1 Project Kick-Off

The Consultant will participate in one (1) kickoff meeting via Zoom, attended by members of the Consultant’s team, Airport’s Concessions Consultant (if applicable), CMAR Representative (if applicable), and Airport staff that are well versed on this project and able to provide the necessary information to the team. The workshop will define, among others the below items. For purpose of proposal development, the meeting is assumed to be one (1) hour.

- » Project goals and client expectations
- » Describe the methods by which the project will be performed
- » Discuss budget and funding sources
- » Discuss current condition of systems and spaces in question
- » Understand other ongoing work that may impact the Project
 - Concourse B Expansion, Switchgear NPDS Replacement, Central Energy Plant Modifications, etc.
- » Discuss design construction schedule
- » Discuss preliminary construction schedule

The following disciplines/individuals will be present from the Consultant team:

- » Project Manager
- » Architect
- » Design Architect

The Consultant will develop and distribute meeting agenda, minutes and sign-in sheet. It is assumed meeting will be within ten (10) working days of project NTP.

Task 1.2 Advanced Concept Development

The Consultant will develop (1) conceptual plan derived from the concept plans dated May 3, 2021 in the Planning and Programming Report completed by RS&H, Inc under PBC DOA Task I-20-PBI-R-014 Terminal Connectors as indicated in Figure above. Concepts will reflect architectural and building engineering systems impacts and include themes and materials from previously discussions with DOA on various Projects at the Airport (Ticket Counter Replacement, Concourse B Expansion, etc.). The concept refinement will result in a greater level of detail and will be represented in further developed building interior plans to include architectural design elements and vignettes of areas of interest; exterior elevations are excluded as project is primarily interior renovation project. (2) Two interior renderings of the Terminal Connector (space between relocated SSCP C and Conc B exit lane) will be developed

Included will be a preliminary building code analysis to ensure that concepts meet applicable standards.

Task 1.3 Phasing and Constructability Development

Constructability and phasing of the refined concept is of critical importance. The Consultant will develop high level phasing plans to identify critical elements that must be accommodated. The Consultant will layout the relocated Checkpoint C using both TSA Legacy Lane equipment and new TSA Checkpoint Property Screening System (CPSS) equipment. It is anticipated that additional building square footage may be necessary to support the new TSA equipment.

The constructability and phasing plans will be used to inform the refined ROM cost estimate and feature the phasing of Checkpoint C relocation and direct surrounding area (queuing, secure exit lane, path to connector, etc). CAST modeling to determine passenger queuing of each phase is excluded in this task and shall be completed in next DOA Task order.

Task 1.4 Advanced Concept Rough Order of Magnitude (ROM) Opinion of Probable Construction Costs

The Consultant will update the ROM cost estimate (Task I-19-PBI-R-014) based on the level of completion.

In providing estimates of probable construction cost, the Airport understands that the Consultant has no control over the cost or availability of labor, equipment, or materials, or over market conditions or a Contractor's method of pricing, and that the Consultant's estimates of probable construction costs are made on the basis of the Consultant's professional judgement and experience. The Consultant makes no warranty, express or implied, that the bids or the negotiated cost of the Work will not vary from the Consultant's estimate of probable construction cost. The estimate will be based on commodity and labor pricing effective the quarter of the review meeting with adjustment for escalation.

The documents of Task 1.5 will be submitted to DOA and estimator at same time.

Task 1.5 Advanced Concepts Submittal

The Consultant will prepare and submit the following electronic files:

- » The advanced concepts will be represented in basic floor plan drawings.
- » (3) Renderings of the advanced concept
- » High level phasing and constructability plans (drawings)
- » ROM (.pdf) – twenty (20) working days after Submittal

Task 1.6 Advanced Concept Review Meeting

The Consultant will participate in an advanced concept review meeting to be held via Zoom.

The following representatives from the Consultant team will participate in the meeting:

- » Project Manager
- » Architectural Designer
- » Architect

The workshop may include selected stakeholders as directed by the Airport and may include Airport, Airlines, FAA, Tenants, Concession's consultant etc. with the intent for the Consultant to present the advanced concept alternatives and solicit comments.

The Consultant will develop and distribute meeting Agenda, Minutes and Sign-In Sheet. It is expected that a direction/alternative/hybrid will be selected for further refinement. It is assumed meeting will be within five (5) working days after Task 1.5. ROM Submittal.

Task 1.7 Refined Advanced Concept Development

The Consultant will refine the advanced concept plan selected by the Airport and incorporate any approved/relevant comments from the Task 1.6 Review Meeting. The constructability and phasing drawings of Task 1.3 will be updated as needed. (1) One interior rendering of the final concept will be developed.

Task 1.8 Refined Advanced Concepts Submittal

The Consultant will prepare and submit the following electronic files:

- » The refined advanced concept deliverable will be represented in basic floor plan drawings
- » (1) Rendering of refined advanced concept
- » High level phasing and constructability plans (drawings)
- » ROM (.pdf) – fifteen (15) working days after Submittal

Task 1.9 Quality Control Review

The Consultant shall conduct in-house quality control reviews of each deliverable provided to the Airport. The reviews shall cover the concept plan documentation prior to submittal to the Airport. The Quality Control review will be performed as follows:

- » Independent QC Review – An independent Architect not actively involved in the Project will review for readability, accuracy, appearance and acceptability

Task 1.10 Project Management

Consultant will oversee scheduling, resource allocation, monitoring, oversight, direction and control for all aspects of the team's efforts including assembly and coordination of all documentation.

The Consultant will issue monthly progress reports with each invoice to the Airport project manager during this portion of the project.

III MEETINGS AND PRESENTATIONS

The following meetings and presentations will be attended as part of this proposal

Task	Presentation / Meeting / Site Visit	Total Meetings	In-Person Attendance	Remote Attendance
1.1	Project Kick-Off	1	-	X
1.6	Advanced Concept Review Meeting	1	-	X

V DELIVERABLES

The following deliverables will be submitted as part of this proposal:

Task	Deliverable	Information Included	Format
1.5	Advanced Concepts	Floor plan drawings, Phasing & Constructability Drawings, ROM, Renderings	.pdf
1.9	Refined Advanced Concepts	Floor plan drawings, Phasing & Constructability Drawings, ROM, Renderings	.pdf

VI PROPOSED PROJECT SCHEDULE

See Attachment A.

VII ASSUMPTIONS AND EXCLUSIONS

The following assumptions have been made for this Scope of Work:

- » The consultant will coordinate with DOA concessionaire and concessionaire consultant that is under contract between those entities.
- » Changes to the project design schedule due to circumstances outside of Consultant's control may require changes in the Consultant's efforts and require adjustments to the compensation indicated in this proposal.
- » The Project delivery method will be CMAR.
- » C1 and C2 Holdrooms will not be impacted.
- » Art program locations will be identified on plans only. Any additional coordination with artist is beyond scope of work.
- » Airport has Concessionaire Consultant under contract

The following items are excluded from this Scope of Work unless otherwise noted:

- » Putting Green design
- » Surveying
- » Geotechnical Testing
- » ACM investigation and testing (Completed by Airport)
- » Refined Advanced Concept Cost Estimate or Review Meeting

VIII PROFESSIONAL SERVICES FEE AND FEE TYPE

RS&H will provide the above referenced services for a Fixed Lump Sum Fee of \$96,773.16. See Attachment B for a breakdown of costs.

Should scope items/activities/efforts/durations be modified at the request of the PBC DOA or need to be adjusted based on design/construction scheduling, the Consultant Team will need to modify the fee to accommodate the changes. Such changes will be compensated through an amendment (through Additional Services requested by the Consultant) to the Task Order or similar vehicle. Effort, fee, and schedule adjustments resulting from a change in scope will be assessed and approved by the Airport prior to the execution of the change.

ATTACHMENT A: SCHEDULE

Task Name	Start	Finish
Task 1: Phase 1B: Advanced Conceptual Design / Design Analysis Confirmation	Tue 4/11/23	Mon 8/7/23
NTP	Tue 4/11/23	Tue 4/11/23
1.1 - Project Kick-off	Tue 4/11/23	Tue 4/11/23
1.2 / 1.3 - Advanced Concept / Phasing and Constructability Development	Tue 4/11/23	Wed 6/14/23
Advanced Concept Development Period	Tue 4/11/23	Mon 6/5/23
Quality Control Period	Mon 6/5/23	Wed 6/14/23
1.5 - PM to send Submittal to PBC DOA (COB)	Wed 6/14/23	Wed 6/14/23
1.4 - Advanced Concept ROM Opinion of Probable Construction Costs	Wed 6/14/23	Wed 7/12/23
Cost Estimate Development	Wed 6/14/23	Wed 7/5/23
Quality Control Period	Thu 7/6/23	Wed 7/12/23
1.5 - PM to review Final Estimate and send to PBC DOA (COB)	Mon 7/10/23	Mon 7/10/23
1.6 - Advanced Concept Review Meeting	Mon 7/17/23	Mon 7/17/23
1.7 - Refined Advanced Concept / Phasing and Constructability Development	Tue 7/18/23	Mon 8/7/23
Submittal Development	Tue 7/18/23	Mon 7/31/23
Quality Control Period	Mon 7/31/23	Mon 8/7/23
1.8 - PM to send Sumittal to PBC DOA (COB)	Mon 8/7/23	Mon 8/7/23

ATTACHMENT B: FEE BREAKDOWN

PALM BEACH COUNTY DEPARTMENT OF AIRPORTS
Airport Facilities & Systems Planning, Design, Engineering and Construction Management Professional Services

RS&H, INC.
Terminal Connectors: Advanced Concepts
DOA Task No.: III-22-PBI-R-040
RS&H Project Number: 2006-3101-010 / 040

<u>Task</u>	<u>Description</u>	<u>Hours</u>	<u>Fee</u>
Task 1	Advanced Conceptual Design	678	\$87,847.16
		Subtotal RS&H Labor Hours	678
		Subtotal RS&H Labor Fee	\$87,847.16
<u>Subconsultants</u>			
	Connico		\$8,926.00
		Subtotal Subconsultant Fee	\$8,926.00
		Total Project Fee	\$96,773.16

Terminal Connectors: Advanced Concepts		HOURS										TOTAL COST (\$)		
		HOURS												
		Principal	Senior Project Manager	Senior Architect	Architect	Intern Architect	Senior Planner Terminal	Planner Terminal	Administrative Assistant	HOURS	TOTAL COST (\$)			
\$349.99	\$287.02	\$245.39	\$125.87	\$95.16	\$213.95	\$110.68	\$60.37							
Task 1	Advanced Conceptual Design													
1.1	Project Kick Off		3										3	\$861.06
	PM												2	\$490.78
	Architecture			2										
1.2	Advanced Concept Development		4										4	\$1,148.08
	PM												19	\$2,516.00
	Planning												289	\$36,106.58
	Architecture			41	121	127					15			
1.3	Phasing and Constructibility		5										5	\$1,435.10
	PM												147	\$15,470.93
	Architecture			3	50	85					7			
1.4	Advance Concept Rough Order of Magnitude (ROM) Opinion of		1										1	\$287.02
	PM												2	\$427.90
	Planning												12	\$1,385.70
	Architecture			1	5	6								
1.5	Advanced Concepts Submittal		5										5	\$1,435.10
	PM												-	\$0.00
	Planning												12	\$1,385.70
	Architecture			1	5	6								
1.6	Advance Concept Review Meeting		3										3	\$861.06
	PM												4	\$981.56
	Architecture			4										
1.7	Advance Concept Refinement		5										5	\$1,435.10
	PM												19	\$2,516.00
	Planning												98	\$11,489.74
	Architecture			12	30	56					4	15		
1.8	Advanced Concepts Submittal		3										3	\$861.06
	PM												-	\$0.00
	Planning												6	\$752.61
	Architecture			1	2	3								
1.9	Quality Control Review		3										3	\$861.06
	PM												2	\$427.90
	Planning												21	\$2,793.06
	Architecture			5	5	11								
1.1	Project Management		5										8	\$1,918.06
	PM												8	\$87,847.16
	Task Total	-	37	70	218	294				14	37		678	\$87,847.16
	TOTAL FOR ALL TASKS (RS&H)	-	37	70	218	294				14	37		678	\$87,847.16

Terminal Connectors: Advanced Concepts			
Sub Consultant Effort by Major Task Item		Task 1	
Connico	<i>Cost Estimating</i>	\$ 8,926.00	\$8,926.00
TOTAL SUBCONSULTANTS			\$8,926.00

ATTACHMENT C: SUBCONSULTANT PROPOSALS



2594 N. Mount Juliet Road
Mount Juliet, TN 37122

January 23, 2023

(615) 758-7474
www.connico.com

Mr. Aaron Jackson
RS&H
10748 Deerwood Park Blvd South,
Jacksonville, FL 32256

RE: PBI Terminal Connector
Palm Beach International Airport
West Palm Beach, Florida

Dear Mr. Jackson:

We are pleased to present our revised fee proposal for the referenced project.

We appreciate the opportunity to team with you on this project. Should you have any questions or need additional information, please contact us at your convenience.

Sincerely,

The Connico Team

A handwritten signature in gold ink, appearing to read "Charles J. Cleary".

Charles J. Cleary, CPE
Chief Cost Specialist
cjcleary@connico.com

Connico File No. 4312.22.20

EXHIBIT A – SCOPE OF WORK AND FEE

Project Scope

The scope of work consists of the modification to the 2-story area between Concourse A/B and Concourse C for an airside corridor at Palm Beach International Airport.

The work shall include the required elements, systems, equipment, and facilities typical of a Terminal Connector:

- The interior space for the public circulation, seating, and art installation zones
- Project will replace existing tile flooring with new terrazzo in public circulation
- New support spaces including restrooms, family restroom, janitorial room and MEP rooms
- Project will reuse existing furniture (where applicable)
- Provide new MEP systems to existing concessions spaces (Rooney's and Oceanfront).
- Project will provide shell space at new concessionaire spaces for concessionaire build-out
- Airport lounge full design (approximately 10,500 SF)
- Secure exit corridor, employee nonsterile to sterile access and emergency exits
- The interior basic shell for concession tenant spaces
- Adding (2) airside restrooms in the corridor
- Reconfiguring the exit corridors from Concourse A/B and Concourse C
- Relocating TSA security check point at Concourse C
- Reconfiguring checkpoint A/B

The construction budget has been preliminarily established at \$25,000,000.00.

Basic Scope of Services

Connico proposes to provide the following services:

- ⇓ Advanced Conceptual Design Estimate

Each phase includes an initial scope of work review meeting and a draft estimate review meeting via teleconference. The teleconference meeting is to occur prior to issuing an electronic copy of the final report. A limited site visit for the purposes of providing an opinion of probable cost is not included. This proposal is for planning, design phase services only; construction phase services are not included.

In providing estimates of probable construction cost the Client understands that Connico has no control over the cost or availability of labor, equipment, or materials, or over market conditions or the Contractor's method of pricing, and that Connico's estimates of probable construction costs are made on the basis of Connico's professional judgment and experience. Connico makes no warranty, express or implied, that the bids or the negotiated cost of the Work will not vary from Connico's estimate of probable construction cost

Connico will require an electronic version of the drawings (PDF) and narrative/specifications, and a copy of the soil borings report, if available and applicable.

Connico will provide an electronic copy of the report.

Deliverables

The estimate will be prepared in a format to fit the requirements of the Client, provided the format is established at the beginning of the estimating task. The estimate will identify Connico's opinion of probable construction cost of

EXHIBIT A – SCOPE OF WORK AND FEE

the project based on the documents provided by the Client. Connico is entitled to rely and will rely on the accuracy and completeness of all such documents without undertaking an independent investigation to confirm the same.

Also included within the report shall be the estimate notes. The notes will contain allowances, criteria, and clarifications for the estimate based on Connico's assumptions and verbal information provided by the design team. The notes will also include any other comments about the project that Connico believes are relevant.

Connico will provide an electronic copy of the estimate report.

The draft estimate(s) shall be prepared within ten (10) business days from the date all design information required is received by Connico. The final estimate shall be prepared within five (5) business days after receipt of all draft estimate comments. In the event that supplemental information is furnished to Connico after a task has begun, and such information requires changes to any quantity take-off currently in progress, Connico reserves the right to request additional compensation for any such additional take-off. No additional time shall be expended on work affected by such supplemental information without the prior written consent of the Client and an agreement having been reached as to the scope and additional fee required.

Proposed Fees (Basic Scope of Services)

↓ Task 1.4 - Advanced Conceptual Design Estimate	\$8,926.00
↓ Task 1.8 – Refined Advanced Conceptual Design Estimate	Excluded

<i>Total Proposed Fees (Lump Sum)</i>	<i>\$8,926.00</i>
--	--------------------------

The proposed fees are based on providing all listed phase of estimates. Should the Client elect to change the scope of services, Connico reserves the right to renegotiate our fees.

Proposed fees are based on providing one draft estimate for review and comment and one final estimate. Should additional revisions be requested, these shall be considered additional services.

Services not set forth above and not listed in Exhibit A of this Agreement are specifically excluded from the scope of the Consultant's services. The Consultant assumes no responsibility to perform any services not specifically listed in Exhibit A.

Additional Services

Additional services are not included as part of the Basic Scope of Services and shall be paid for by the Client, in addition to payment for Basic Services, in accordance with Connico's schedules below, or as agreed to by the Client and Connico.

Proposed fees are based on providing one draft report for review and comment and one final report. Should additional revisions be requested, these shall be considered additional services.

Services not set forth above and not listed in Exhibit A of this Agreement are specifically excluded from the scope of Connico's services. Connico assumes no responsibility to perform any services not specifically listed in Exhibit A.

EXHIBIT A – SCOPE OF WORK AND FEE

Additional Services

Additional services are not included as part of the Basic Scope of Services and shall be paid for by the Client, in addition to payment for Basic Services, at the rates included within the agreement, or as agreed to by the Client and Connico.

Basic Services do not include, cost management, evaluating or making recommendations regarding substitution of materials, products, or equipment proposed, design alternatives or value engineering building or site systems; reconciliation estimates or services, and meetings not included within the base proposal. Connico shall be reimbursed at the rates included within the agreement.

Project Submitted by:



Charles J. Cleary CPE

DBE SCHEDULES

**SCHEDULE 1(A)
LIST OF PROPOSED DBE FIRMS**

(Professional Services)
 Airport Facilities & Systems Planning, Design, Engineering and Construction Management Professional Services
 for Palm Beach County Department of Airports

LOI/SOQ Project Description: RS&H, Inc. Change Order/Task/Amendment No. (if applicable): Task III-23-PBI-R-040
 Name of Respondent: Pat Hargrove E-mail Address: Pat.Hargrove@rsandh.com
 Contact Person: 10748 Deerwood Park Blvd S, Jacksonville FL, 32256 Phone No. 904-256-2437 Fax No. 800-464-4358
 Address:

Name, Address & Phone No. of DBE Firm	Description of Type of Work	Classification (Check applicable box)	Percentage of DBE Participation			
			Black	Hispanic	Women	Other (Please Specify)
Connico, LLC 2594 North Mount Juliet Road, Mount Juliet, TN 37122 / (786) 877-8392	Cost Estimating	<input type="checkbox"/> Prime Consultant <input checked="" type="checkbox"/> Subcontractor <input type="checkbox"/> Supplier <input type="checkbox"/> Manufacturer	___ %	___ %	___ %	Asian / Pacific 9.22 %
		<input type="checkbox"/> Prime Consultant <input checked="" type="checkbox"/> Subcontractor <input type="checkbox"/> Supplier <input type="checkbox"/> Manufacturer	___ %	___ %	___ %	___ %
		<input type="checkbox"/> Prime Consultant <input checked="" type="checkbox"/> Subcontractor <input type="checkbox"/> Supplier <input type="checkbox"/> Manufacturer	___ %	___ %	___ %	___ %
		<input type="checkbox"/> Prime Consultant <input checked="" type="checkbox"/> Subcontractor <input type="checkbox"/> Supplier <input type="checkbox"/> Manufacturer	___ %	___ %	___ %	___ %

Total Percentage of DBE Participation: 9.22 %

- Notes:**
- The percentages listed on this form for each DBE Firm must be supported by the percentages included on Schedule 2(A), "Letter of Intent to Perform as a Disadvantaged Business Enterprise", in order to be counted toward attainment of the DBE goal.
 - Firms identified on this form must be certified as a DBE by the State of Florida's Unified Certification Program. Certification status can be verified on the Florida Department of Transportation's website at <http://www3b.dot.state.fl.us/EqualOpportunityOfficeBusinessDirectory/CustomSearch.aspx>.
 - If materials or supplies are proposed to be purchased from a DBE regular dealer, the undersigned acknowledges that only sixty percent (60%) of the proposed expenditure will be counted toward attainment of the DBE goal.

By signing this form, the undersigned Respondent is committing to utilize the above referenced DBE Firms on the Project and that the Respondent will monitor the DBE Firms to ensure that the work is actually performed by the DBE Firms.

By: Pat Hargrove Date: 3/29/2023

Signature
Pat Hargrove Vice President-Aviation
 Print Name/Title of Person Executing on Behalf of the Respondent

RS&H - Progress Summary March 1, 2023

Original Contract and Amendments 1, 2, 3, 4, 5 & 6

Level 1 Tasks: Planning, Design, and Construction and Financial

Task	Project Name	Status	Activity
Task I-19-PBI-R-001	Terminal Escalator Replacement	Ongoing	1. Project in Construction. 2. Bi-Weekly meetings.
Task I-19-PBI-R-002	400Hz & Switchgear Replacement	Complete and Fully Invoiced	Completed.
Task I-19-PBI-R-003	New Parking Revenue Center	Ongoing	Completed.
Task I-19-PBI-R-004	ARFF Improvements	Complete and Fully Invoiced	Completed.
Task I-19-PBI-R-005	FIS Improvements	Ongoing	Completed.
Task I-19-PBI-R-006	Airline Ticket Counters	Ongoing	<ol style="list-style-type: none"> 1. 95% CD's submitted on 2/8/22 2. A list of open items included with submitted for information RS&H requests to complete design. 3. Reroof project to be completed first (in CA now), 1 year construction timeframe. GMP (Draft) received by DOA on 12/6...projected for Board on Jan 24 4. Target Spring 2024 construction 5. Funding Source? PFC? 6. May update to make backwall entirely screens similar to MCO 7. DOA to ask Delta, Southwest, Jet Blue for CAD files of their Millwork / Ticket counters so we can include in backgrounds of final submittal. 8. Roll into next PFC (target for 2023 construction, reroof needs to be completed prior to construction of this project). Re-roof bid spring 22 with a year of construction
Task I-19-PBI-R-007	Terminal Expansion Programming	Complete and Fully Invoiced	Completed.
Task I-19-F45-R-008	GA Hangar (F45: Proposed Hangar 11620)	Complete and Fully Invoiced	Completed.

Task I-19-PHK-R-009	GA Hangar (PHK: Proposed General Aviation Hangar)	Cancelled	Completed.
Task I-20-PBI-R-011	High Mast Lighting Renovation	Ongoing	1. 100% CD Submitted. 100% CD review meeting held. 2. Waiting on approved from TSA on fence relocation (Jeremy). 3. Will update airside laydown for Concourse C for bid documents based on review meeting comments once project moves forward to bidding. 4. Targeting 2023 construction.
Task I-20-PBI-R-012	Terminal, Concourses and Parking Garages Electrical Distribution Assessment Report	Complete and Fully Invoiced	Completed.
Task I-20-PBI-R-013	New Airfield Rescue and Fire Fighting Facility (ARFF)	Ongoing	1. 100% CD's submitted 4/28/22 2. 100% CD's Rev 1 submitted 9/30/22 3. PZB / Fire approval of bunk room layout? No official response will be provided from PZB / Fire prior to submittal. Unofficially, PZB is reviewing (2) other different fire stations with similar condition and has tentatively approved them and compiling an internal document for such approval. 4. DOA to review VE items provided by MGI 5. Construction Dec 2023, maybe BIL money 6. Funding is BIL and PFC.... 7. RS&H owes DOA Level 3 proposal adn PFC application update based on latest estimate from MGI. 8. DOA request a zoom meeting with Design Team / MGI week of Jan '16 9. DOA request a on-site meeting with Design Team / MGI / Fire week of Jan '23.
Task I-20-PBI-R-014	Terminal Connector (Planning and Programming)	Complete and Fully Invoiced	Completed.
Task I-20-PBI-R-017	PBI Switchgear NPDS Replacement	Complete and Fully Invoiced	Completed.
Task I-20-PBI-R-018	PBI Concourse B Expansion (Conceptual and Schematics)	Complete and Fully Invoiced	Completed.
Task I-20-PBI-R-019	PBI Terminal Public Address (PA) System Construction	Complete and Fully Invoiced	Completed.

<p>Task I-20-PBI-R-020</p>	<p>PBI PCA and GPU Point of Use (Design and Bidding S</p>	<p>Ongoing</p>	<p>1. Permit comments closed, permit issued 2. 66 week lead time does not impact PC Air installation is in Fall of '23. 3. FB issued to address FPL door and include RS&H proposed changes to have 5 Conc B PBB's and 6 Conc C PBB's operations sooner than after JBB1 & JBC1 become energized. PCO #1 submitted for cost associated with FB and PCO under review.</p> <p>PCA - Pkg 1 (Conc B) 1. RS&H received constructibility report from Suffolk on 5/2 2. RS&H reviewed and incorporated comments (as applicable) into Pkg 1 3. RS&H submitted Pkg 1 to DOA on 5/20/22. 4. RS&H to provide responses to report by COB 6/17/22. 5. RS&H submitted Pkg 1 to Morganti for constructibility review. 6. RS&H received MGI constructibility review on 12/27/22 7. RS&H-CMAR-DOA constructibility review meeting on 1/18/22.</p> <p>PCA - Pkg 2 (Conc C) 1. RS&H submitted Pkg 2 to Morganti for constructibility review. 2. RS&H received MGI constructibility review on 12/27/22 3. RS&H-CMAR-DOA constructibility review meeting on 1/18/22.</p> <p>PCA 1. Funding for project is either PFC or BIL. If PFC, project award will be in Nov. '23. 2. end of Jan '23 we will know if project is BIL or if this will need to roll into PFC applicaiton 3 revisit in Feb '23</p>
<p>Task I-20-PBI-R-021</p>	<p>PBI FIS & Bldg 846 Storm Resiliency Modifications Pac</p>	<p>Ongoing</p>	<p>Completed. 1. Send latest to Lebolo</p>
<p>Task I-20-PBI-R-022</p>	<p>PBI Terminal Elevator Assessment Report</p>	<p>Complete and Fully Invoiced</p>	<p>Completed.</p>
<p>Task I-20-PBI-R-023</p>	<p>PBI Concourse B Expansion (CD's)</p>	<p>Ongoing</p>	<p>Package 1 1. 100% CD's submitted to DOA on 6/1/22 2. Pkg 1 resubmitted 7/22/22 3. ADD-001 issued to CMAR / DOA on 8/29/22 4. ADD-002 issued to CMAR / DOA on 9/8/22 5. ADD-003 issued to CMAR / DOA on 9/14/22 6. ADD-004 issued to CMAR / DOA on 9/16/22 7. Restroom glazing signage will be issued via FI once project is under construction. 8. Targeting Jan '24 board meeting 9. Switchgear FB-005 (JBB2-1 & JBC2-1) to be issued as FB-001 under Conc B Pkg 1</p> <p>Package 2 1. Pkg 2 submitted to DOA / CMAR on 8/31 2. Pkg 2 will need to be updated to include PBB tie downs 3. Pkg 2 estimate in development by Concco</p>
			<p>1. Bi Weekly pre mobilization meetings on going</p>

Task I-20-PBI-R-024	PBI Switchgear NPDS Replacement CA	Ongoing	1. Bi-weekly pre-mobilization meetings on-going 2. Permit issued 3. FB-005 issued on 9/29 for JBB2-1 & JBC2-1 Revised #2 cost received 1/4/23. FB-005 cancelled and to be issued as FB in Conc B Pkg 1.
Task I-20-PBI-R-025	PBI GPU Replacement CA & RPR Services	Ongoing	1. Bi-Weekly pre-mobilization meetings on-going
Task I-20-PBI-R-026	PCA and GPU Point of Use Design & Bidding Services	Ongoing	See Task I-20-PBI-R-020
Task I-22-PBI-R-027	PC Air CA	Proposal Submitted	Will be included in Amendment 8
Task I-22-PBI-R-028	Switchgear Equipment Replacement (Part 2)		Project Kickoff on 2/15/23
Task I-22-PBI-R-029	Concourse B Package Split		
Task I-22-PBI-R-027	Terminal Connector PROPOSAL		Project Cancelled
Task I-23-PBI-R-031	Concourse B CA Pkg 1	Proposal Submitted	Was included in Amendment 7. Amendment 7 on 4/4 board meeting.
Task I-23-PBI-R-032	Concourse B CA Pkg 2	Proposal in development.	
Task I-23-PBI-R-033	New ARFF Facility CA	Proposal in development.	
Task I-23-PBI-R-034	Stm Pkg 3 CA	Proposal in development.	Will be included in Amendment 8. IFE Files submitted to DOA on 3/1
Task I-23-PBI-R-035	Elevator Rehab-Replacement	Proposal in development.	Will be included in Amendment 8. IFE Files submitted to DOA on 3/1

Level 3 Tasks: Miscellaneous Services

III-19-DOA-R-001	Terminal & Building #846 Storm Hardening Study	Complete and Fully Invoiced	Completed.
III-19-DOA-R-002	Independent Fee Estimates	Complete and Fully Invoiced	Completed.
III-19-DOA-R-003	FIS Thru-Put Justification	Complete and Fully Invoiced	Completed.
III-19-DOA-R-004	PBI Electrical Load Testing	Complete and Fully Invoiced	Completed.
III-19-DOA-R-005	FIS & Bldg 846 Storm Resiliency Mods - Pkg 1&2	Complete and Fully Invoiced	Completed.
III-20-PBI-R-006	Security Check Points A/B & C Queuing Social Distance Reconfiguration Due to COVID-19 Conceptual Layouts	Complete and Fully Invoiced	Completed.
III-20-DOA-R-008	Storm Resiliency Modifications Package 3 - Phase 2 Schematic Design	Complete and Fully Invoiced	Completed.
III-20-DOA-R-009	ARFF Roof Repair (Part 1)	Complete and Fully Invoiced	Completed.
III-20-PBI-R-010	Terminal Public Address (PA) System Constructicon Engineering Inspection (CEI) Services - PHASE 1	Complete and Fully Invoiced	Completed.
III-20-DOA-R-011	FIS & Bldg 846 Storm Resiliency Modifications Pkg 1 & 2 Phase 5 Construction Administration	Complete and Fully Invoiced	Completed.
III-20-PBI-R-012	PBI Terminal Plumbing Lateral Assessment	Complete and Fully Invoiced	Completed.
III-20-PBI-R-013	PBI Terminal Plumbing Lateral Assessment Amendment	See Task III-20-PBI-R-012	
III-20-PBI-R-014	Task III-20-PBI-R-014: Switchgear Cable Testing	Cancelled	
III-20-PBI-R-015	Task III-20-PBI-R-015: Gate B1 Usage Feasibility Study	Completed and Fully Invoiced	Completed.
III-20-PBI-R-016	Task III-20-PBI-R-016: ARFF Roof Repair (Part 2)	Completed and Fully Invoiced	Completed.
III-20-PBI-R-017	Independent Fee Estimates (Round 2)	Ongoing	Completed.
III-20-PBI-R-018	Task III-20-PBI-R-018: Phase 1 Environmental Site Assessment (ESA) at New ARFF Facility	Completed and Fully Invoiced	Completed.
III-21-PBI-R-019	Bldg 846 Mechanical Equipment Replacement	Completed	Completed.
III-21-PBI-R-020	High Mast Lighting Renovation: Preliminary MOT Plans, Site Modifications, and ROM	Ongoing	See I-20-PBI-R-011
III-21-PBI-R-021	Terminal Connector & Concourse B Renderings	Completed and Fully Invoiced	Completed.
III-21-PBI-R-022	ARFF Roof Repair CA	Ongoing	Completed.
III-21-PBI-R-023	Switchgear Cable Testing	Completed	Completed.
III-21-PBI-R-024	F45 Signature Repair Support Services	Completed	Completed.
III-xx-PBI-R-025	PBI Sanitary Piping	Future	1. DOA Comment on proposal received and under review by RS&H. 2. RS&H to review and provide response and / or revised proposal. RS&H to trim down scope of project to remove what is being corrected in Conc B Expansion and Terminal Connector project.

III-22-PBI-R-026	PBI Bldg 846 Mech Replacement CA	Ongoing	1. In Construction. Reviewing submittals.
III-21-PBI-R-027	Centralized Checkpoint	Cancelled	
III-21-PBI-R-027	Independent Fee Estimates (Round 3)	Ongoing	IFE's 2-5 submitted to DOA on 5/4 for AECOM projects.
III-22-PBI-R-028	PC Air Package Split	Ongoing	See I-20-PBI-R-020
III-22-PBI-R-029	NOT USED	N/A	
III-22-F45-R-030	F45 Signature Repairs	Ongoing	1. Waiting on MGI 100% CD Draft constructibility comments
III-22-PBI-R-031	Conc B PFC Assistance	Ongoing	1. DOA asked to update title to PFC / BIL and submit remaining cost.
III-22-PBI-R-032	Bldg 1475 Air Cargo Fiber and ACS/CCTV	Proposal not accepted as Project is cancelled	
III-22-PBI-R-033	Radio Signal Strength	Ongoing	1. Survey Done 2. Report to RS&H. RS&H will review and submit to DOA
III-22-PBI-R-034	Ticket Counter (Delta Pkg2)	Ongoing	1. Project deliverable submitted. 2. RS&H needs to update Millwork submittal to allow for DOA to install power / comm at a later time as Delta is only installing Millwork. 3. Revised submittal comments will include how to address unknown of power if extended up into existing delta ticket counters.
III-22-PBI-R-035	Escalator F & G/K Planter Design	Ongoing	1. RS&H owes DOA a fee / scope reduction letter to reallocate unused Task 2 back to Level 3 funding.
III-22-PBI-R-036	PBI Airport Project Construction Schedule Coordination	Future	1. RS&H will develop and overall "master" schedule for all the ongoing RS&H projects and coordinate schedule impacts to overall master schedule (ie all projects at the airport) based on individual project schedule impacts. RS&H will investigate options to mitigate impacts to various projects. 2. Discuss Switchgear FB-005 JBB2-1/JBC2-1 timing with PC Air install with Pkg 2 construction.
III-22-PBI-R-037	Conc B Pkg 1 Phase 4 Bidding and Award	Ongoing	
III-22-PBI-R-038	Radio Signal Strength (Add'l Services)	Ongoing	See Task III-22-PBI-R-033
III-23-PBI-R-039	Baggage Makeup Doors / Storm Hardening	Proposal in development.	

III-23-PBI-R-040	Terminal Connector Advanced Concept	See herein	
III-23-PBI-R-041	NOT USED	N/A	
III-23-PBI-R-042	Switchgear- Conc B JBB2-1 & JBC2-1	Proposal submitted	
III-23-PBI-R-043	Access Control	Proposal submitted	

Misc. Items

- 1 - DOA to notify RS&H if DOA wants RS&H to develop a Level 3 proposal to reconfigure existing Level 2 OPS space once OPS is relocated to Conc B apron
2. Does DOA want RS&H to develop a level 3 proposal for F45 fire pump replacement?

BUDGET AVAILABILITY STATEMENT

Budget Availability Statement
Department of Airports

DATE: March 30, 2023

TO: Cynthia M. Portnoy, P.E. *CP*
Deputy Director

FROM: Debbie Duncanson, Deputy Director
Airports Finance & Administration

RE: RS&H, Inc. (R-2019-0612)
Task III-23-PBI-R-040 - Terminal Connector: Advanced Concept
Palm Beach International Airport

SOURCE OF FUNDING: (Check all that apply)

- FAA Grant No.:
- FDOT Grant No.:
- PFC Application No.:
- Airport Revenues/Local Funds
- Other:

Please be advised that funds are available in the amount of \$96,773.16 in account #

FUND: 4111 DEPT: 121 UNIT: A107-500 OBJ: 6505 SUBOBJ: _____

for General Consulting Services provided by RS&H, Inc.

Debbie Duncanson 3/31/23
Debbie Duncanson (Dated)

CP
3/30/23

INSURANCE COMPLIANCE DOCUMENT



Palm Beach County Compliance Summary Report

Vendor Number	Vendor Name	AM Best Rating	Insurance Carrier	Policy #	Eff. Date	Exp. Date	Coverage	Contract Number	Contract Name
DX00000525	RS&H, Inc.	Modified	Compliant					DOA 18-2A	Consulting/Professional Services
		A+g , XV	Zurich American Insurance Company	BAP146956400	6/28/2022	6/28/2023	Auto Liability		
		A+g , XV	American Guarantee and Liability Insurance Company	AUC146955800	6/28/2022	6/28/2023	Excess Liability		
		A , XV	Lloyd's	B0146LDUSA2204895	6/28/2022	6/28/2023	Excess Liability		
		A+++ , XV	Travelers Property Casualty Company of America	EX6T35064A22NF	6/28/2022	6/28/2023	Excess Liability		
		A+g , XV	Zurich American Insurance Company of Illinois	GLO146640900	6/28/2022	6/28/2023	General Liability		
		A , XV	Lloyd's	B0146LDUSA2204894	6/28/2022	6/28/2023	Professional Liability		
		A+g , XV	Zurich American Insurance Company	WC146641000	6/28/2022	6/28/2023	Workers Comp		

Risk Profile : Standard - Professional Services

Required Additional Insured : Palm Beach County Board of County Commissioners

Ownership Entity :