

**Person County Tourism Development Authority
Wayfinding Signage and Locations along
both NCDOT and Town-Roadways
APPENDIX B - AMENDMENT: ADD PHASE 2A**

All measurements and locations for sign placement in this pdf. are approximate. Before installation, the contractor is responsible for calling 811 to locate utilities. It is understood that there will be field corrections. Notify Person County TDA and NCDOT of any changes.

When installing:

- Do not block sight distance from driveways or regulatory signage;
- Contract must keep a copy of the approved NCDOT encroachment permit with them in the field;
- Refer to the approved NCDOT encroachment permit for all signs along NCDOT roadways for:
 - a. Sign Placement from edge of road;
 - b. Sign height from grade;
 - c. Sign and post sizing;
 - d. Traffic Control during installation

Sign Number: 02B

Sign Type: Vehicular

Primary Street: Carver Dr (*Roxboro*)

Cross Street: US 501 (Madison Blvd)

Speed Limit: 35 mph (6 inch letters)

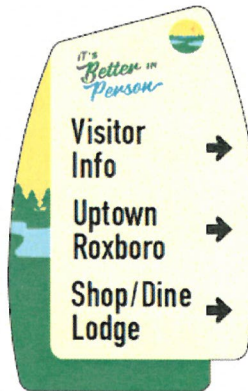
Travel Direction: EB

Distance from turn: Approx. 257 ft west of US 501

Placement: Edge of Sign min. 12 ft off edge of road

Height above grade: 5 ft

Project Phase: 2



New Location



Sign 02 B New Location
Approx. 7 ft north and
back behind the fiber optic

Sign Number: 02C

Sign Type: Vehicular

Primary Street: US 501 (Madison Blvd) (*NCDOT*)

Cross Street: Carver Dr

Speed Limit: 35 mph (6 inch letters)

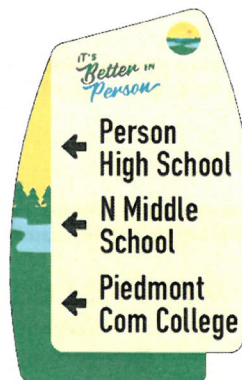
Travel Direction: NB

Distance from turn: Approx. 270 ft south of Carver Dr

Placement: Edge of Sign min. 12 ft off edge of road

Height above grade: 7 ft

Project Phase: 2



Sign Number: 04A

Sign Type: Vehicular

Primary Street: US 501 (Madison Blvd) (NCDOT)

Cross Street: Reams Av

Speed Limit: 35 mph (6 inch letters)

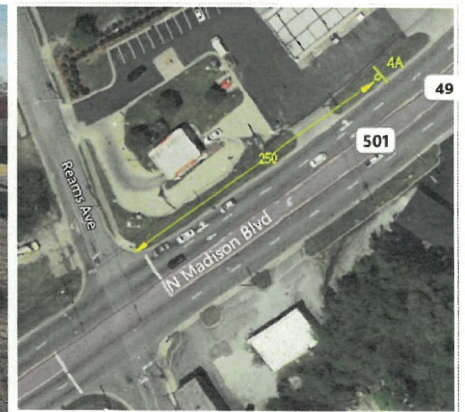
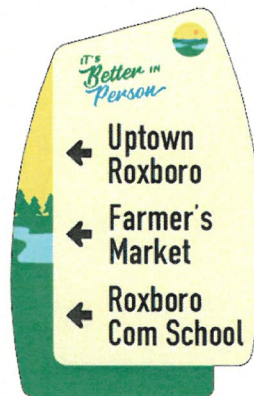
Travel Direction: SB

Distance from turn: Approx. 250 ft north of Reams Ave

Edge of Sign: 12 ft off edge of road

Height above grade: 7 ft

Project Phase: 2



NCDOT Roadway

Sign Number: 08C

Sign Type: Vehicular

Primary Street: US 501 (Madison Blvd) (NCDOT)

Cross Street: S Main St

Speed Limit: 35mph (6 inch letters)

Travel Direction: SB

Distance from turn: Approx. 200 ft north of S Main St

Edge of Sign: min. 12 ft off edge of road

Height above grade: 7 ft

Project Phase: 2



Sign Number: 10B

Sign Type: Vehicular

Primary Street: S Main St (*Roxboro*)

Cross Street: Gordon St

Speed Limit: 20 mph (4 inch letters)

Travel Direction: SB

Distance from turn: Approx. 221 ft north of Gordon

St Edge of Sign: Min. 2.5 ft off edge of travel way

Height above grade: 7 ft

Project Phase: 2



NEW LOCATION

Sign Number: 13A

Sign Type: Vehicular

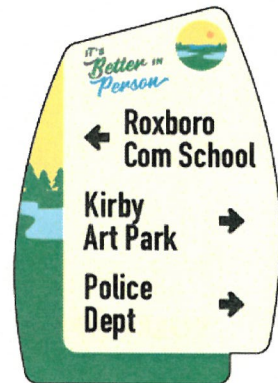
Primary Street: N Main St (*Roxboro*)

Cross Street: Reams Av

Speed Limit: 20 mph (4 inch letters)

Travel Direction: SB

Distance from turn: Approx. 220 north of Reams Ave
Edge of Sign: Min. 2.5 ft off edge of travel way
Height above grade: 7 ft
Project Phase: 2



New Location



Sign Number: 13C

Sign Type: Vehicular

Primary Street: Depot St (*Roxboro*)

Cross Street: N Main St

Speed Limit: 20 mph (4 inch letters)

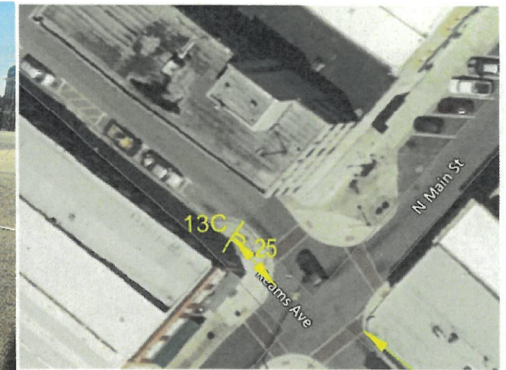
Travel Direction: SB

Distance from turn: Approx. 25ft west of N Main St

Edge of Sign: Min. 2.5 ft off edge travel way

Height above grade: 7 ft

Project Phase: 2



New Location

Sign Number: 13D

Sign Type: Vehicular

Primary Street: Depot St (*Roxboro*)

Cross Street: N Main St

Speed Limit: 20 mph (4 inch letters)

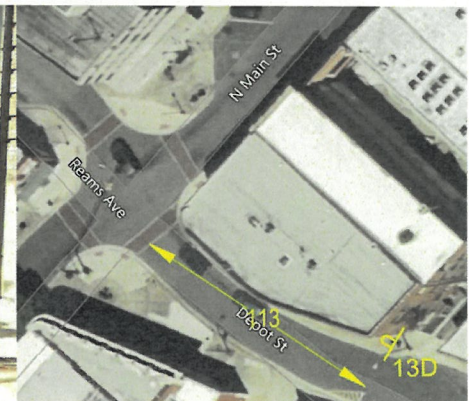
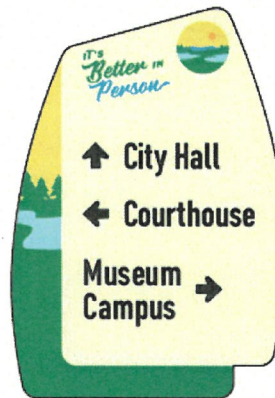
Travel Direction: WB

Distance from turn: Approx. 113ft east of N Main St

Edge of Sign: Min. 2.5 ft off edge of travel way

Height above grade: 7 ft

Project Phase: 2



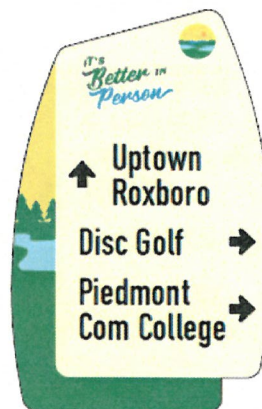
New Location



For Flood Permit:



Sign Number: 16A
Sign Type: Vehicular
Primary Street: Boston Rd (SR-1605) (NCDOT)
Cross Street: Memorial Dr (SR-1416)
Speed Limit: 35 mph (6 inch letters)
Travel Direction: SB
Distance from turn: Approx. 200 ft north of Memorial
Edge of Sign: 12 ft off edge of road
Height above grade: 5 ft
Project Phase: 2



NCDOT Roadway



Sign Number: 17A

Sign Type: Vehicular

Primary Street: Long Av (*Roxboro*)

Cross Street: S Morgan St

Speed Limit: 20 mph (4 inch letters)

Travel Direction: WB

Distance from turn: Approx. 167 ft south of Morgan St Roundabout

Edge of Sign: 12 ft off edge of road

Height above grade: 7 ft

Project Phase: 2



New Location

Sign Number: 18A

Sign Type: Vehicular

Primary Street: Carver Dr (*Roxboro*)

Cross Street: Ridge Rd

Speed Limit: 35 mph (6 inch letters)

Travel Direction: WB

Distance from turn: Approx. 300 ft east of Ridge Rd

Edge of Sign: 12 ft off edge of road

Height above grade: 5 ft

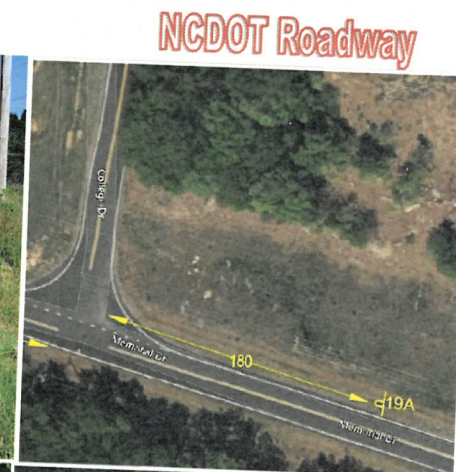
Project Phase: 2



Sign Number: 19A
Sign Type: Vehicular
Primary Street: Memorial Drive (SR-1416) (NCDOT)
Cross Street: College Dr
Speed Limit: 35 mph (6 inch letters)
Travel Direction: WB
Distance from turn: Approx. 180 ft east of College Dr
Placement: 12 ft off edge of road
Height above grade: 5 ft
Project Phase: 2



Sign Number: 19B
Sign Type: Vehicular
Primary Street: Memorial Drive (SR-1416) (NCDOT)
Cross Street: College Dr
Speed Limit: 35 mph (6 inch letters)
Travel Direction: EB
Distance from turn: Approx. 180 ft west of College Dr
Placement: 12 ft off edge of road
Height above grade: 5 ft
Project Phase: 2



NCDOT Roadway



NCDOT Roadway