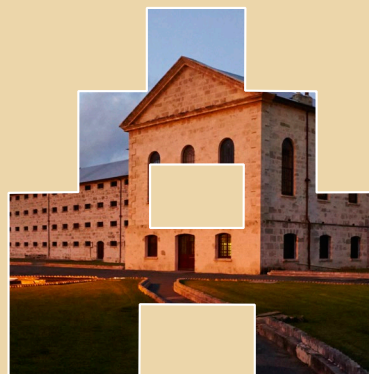
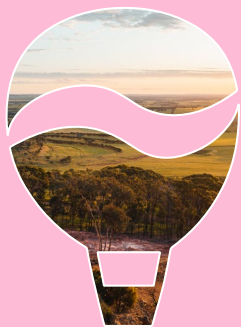


# *Destinations & Itineraries*

DESTINATION **PERTH**





# Overview

The Perth region consists of the city, a stunning coastline and the surrounding countryside offering a mix of city lifestyle, natural attractions, food and wine experiences, history and culture, and adventure, all on offer within a short distance of the CBD.

This document provides an overview of each of Perth's key destinations along with suggested day-trip itineraries for visitors.

Click on the links to find out more about our key destinations.



[PERTH CITY](#)



[THE SUNSET COAST](#)



[THE SWAN VALLEY](#)



[ROTTNEST ISLAND/  
WADJEMUP](#)



[FREMANTLE](#)



[PERTH HILLS](#)



[ROCKINGHAM](#)



[MANDURAH & PEEL](#)



[AVON VALLEY](#)



# Perth City

---

Perth is a vibrant, cosmopolitan city that features a mix of modern developments and heritage buildings along with a wide range of accommodation, dining options, tours and attractions. Free public transport within the CBD, makes it easy for visitors to get around.

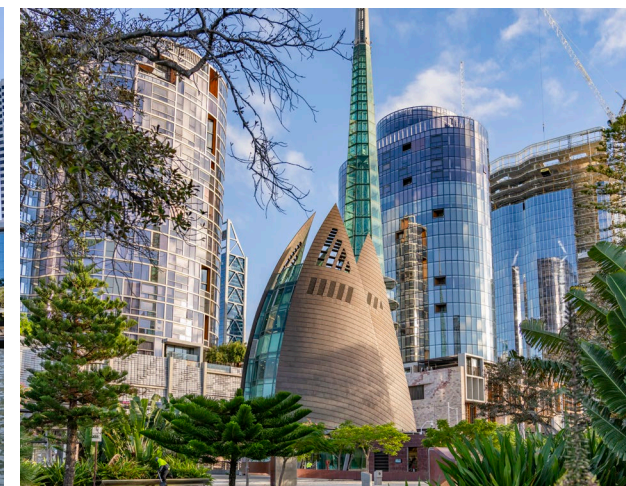
Visitors can dine at a wide variety of restaurants and cafes with dishes from around the globe, relax with a drink at an impressive line-up of laneway and rooftop bars and browse through more than 900 shops from luxury international brands to local designers.

Perth City hosts a variety of events throughout the year. The award-winning Optus Stadium, theatres, concert halls, museums and galleries, and public spaces host international sporting events, major arts and food festivals, concerts and exhibitions.

The surrounding suburbs of Northbridge, Mount Hawthorn, Leederville, North Perth, Mount Lawley, Burswood, South Perth, Victoria Park and Subiaco are easily accessed by public transport and offer visitors a range of dining and entertainment options.

Perth is situated on the banks of the Swan River; a vast waterway that flows from the northern reaches of the Swan Valley and exits into the Indian Ocean north of Fremantle. The jetties at Barrack Street and Elizabeth Quay are the departure points for river cruises to Fremantle and the Swan Valley, as well as ferries to South Perth and Rottnest Island.

In the city, the river is surrounded by dual-use walk and cycle trails, and aquatic activities including kayaking, fishing, jet skiing, boating and stand-up paddle boarding.





# *Kings Park*

---

Kings Park is one of the largest inner-city parks in the world with huge expanses of natural bushland, native botanic gardens, grassy lawns and magnificent views over the Swan River and Perth City. It showcases an outstanding collection of Western Australian flora and is a popular place for picnics, walks and cultural and ceremonial events.

Kings Park is home to the West Australian Botanic Gardens displaying over 3,000 species of the state's unique flora. A stunning variety of wildflowers are on show during spring, from September to November.

The total area of Kings Park is 400.6 hectares and features both cultivated gardens and untamed bushland. Visitors can walk among the treetops on a suspended bridge, join an Aboriginal cultural experience with a local Noongar tour guide, browse the gift shop, enjoy a coffee or lunch at the café, visit the State War Memorial and enjoy an outdoor concert in summer. There are also a variety of excellent playgrounds and picnic areas for families.

Free guided walks are led by the Kings Park Volunteer Guides, self-guided walking trail maps are available from the Visitor Information Centre and several tour operators offer guided tours.

Kings Park is free to enter and is open 24 hours a day.







# Perth City Itinerary

[Click here for more Information](#)

[Accommodation](#)

[Attractions](#)

[Tours & Hire](#)

[Food & Drink](#)

[Retail](#)

## Morning

Start your day in Kings Park and marvel at the amazing city and river views from the Kaarta Gar-up Lookout, State War Memorial and the Lotterywest Federation Walk Way. Discover the state's unique and diverse plant life in the Western Australian Botanic Garden, browse through the Aspects of Kings Park gift shop and enjoy breakfast at the Botanical Café.

Join the hop-on-hop-off bus, use the free public transport or join a guided walking tour to visit some of Perth's major attractions.

Stop at Barrack Square to visit The Bell Tower, one of the largest musical instruments on earth, and Elizabeth Quay; watch a gold pouring demonstration at The Perth Mint; explore the stunningly restored State Buildings and take the kids to Scitech – Perth's interactive science discovery centre and planetarium.

## Day

Enjoy lunch at one of the many cafes in the CBD and spend the afternoon shopping along the Murray and Hay Street Malls, at Watertown Brand Outlet Centre and stylish King Street, Wesley Quarter and Cathedral Square.

If you prefer art and culture, head to the Perth Cultural Centre and see Australian and international art at the Art Gallery of WA and explore the WA Museum Boola Bardip, with exhibits featuring the formation of the Universe, WA inventions, extinct and newly discovered species, and our State's diverse communities.

Adventure seekers can climb to the top of the Matagarup Bridge or Optus Stadium, kayak on the Swan River or join a segway or bike tour.

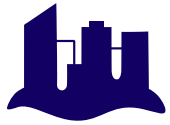
## Evening

As the sun goes down, head to East Perth or Elizabeth Quay for ambient dining on the Swan River, choose from a range of cuisines in Northbridge, explore the many sophisticated restaurants lining St George's Terrace or join one of the many small bar walking tours.

If you want to get out of the CBD, but not venture too far, jump in a taxi or use public transport and head to Crown Perth, Leederville, Subiaco, Beaufort Street, North Perth, South Perth or Victoria Park – all these precincts are jammed packed with a selection of great pubs, bars, cafes and restaurants.

Perth is also home to many cultural, sporting and community events so find out what's on when you are visiting. You might catch an international act at RAC Arena, a play at the State Theatre Centre, a comedy show at the Comedy Lounge, an opera or ballet at His Majesty's Theatre, a sporting match at Optus Stadium or a concert at the Perth Concert Hall.





# Swan River Itinerary

[Click here for more Information](#)

## Morning

---

Start at Barrack Street Jetty and cruise downstream to Fremantle, passing some of Perth's most elite suburbs and multi-million dollar mansions, or upstream to the Swan Valley to sample amazing wines, ciders, produce and more.

From Elizabeth Quay you can catch a public transport ferry to South Perth, where you'll find great dining, parks and playgrounds and the Perth Zoo, or a leisurely private gondola or ferry ride.

For those with a car, the Swan River makes for a great self-drive to Fremantle. Starting in the CBD, follow the river along Mounts Bay Road at the base of Kings Park, and through the pretty river suburbs of Matilda Bay, Nedlands, Dalkeith, Claremont, Peppermint Grove and Mosman Park.

## Day

---

If you're after a bit of exercise, set off on the dual-use paths that make it possible to walk or cycle along the river. Start at the Perth City foreshore and follow the path along Mounts Bay Road to Matilda Bay, cross the Narrows Bridge and Causeway, and follow along the South Perth foreshore.

Stop at the iconic Blue Boat House in Crawley, stunning Matilda Bay, Heirisson Island to see the resident kangaroos and the scenic parklands of South Perth and Burswood.

For something a little different, join a segway or bike tour around the river or enjoy some adventure on the water with sailing and kayaking available.

## Evening

---

End your day with a relaxing sunset dinner cruise or head to one of the many restaurants with river views at Barrack Square, Elizabeth Quay, South Perth, Claisebrook Cove, Matilda Bay or Mounts Bay Road.

Extend your Swan River experience by spending the night in one of the many hotels located along the river.



# *The Sunset Coast*

The Sunset Coast encompasses over 50 kilometres of beautiful coastline from Lancelin in the north to Cottesloe in the south. The beaches of the Sunset Coast are just a short drive from Perth City, with the closest just 20 minutes from the CBD.

Perth's coastline is a water lover's paradise offering some of Australia's finest beaches, world-class marinas and uniquely stunning sunsets.

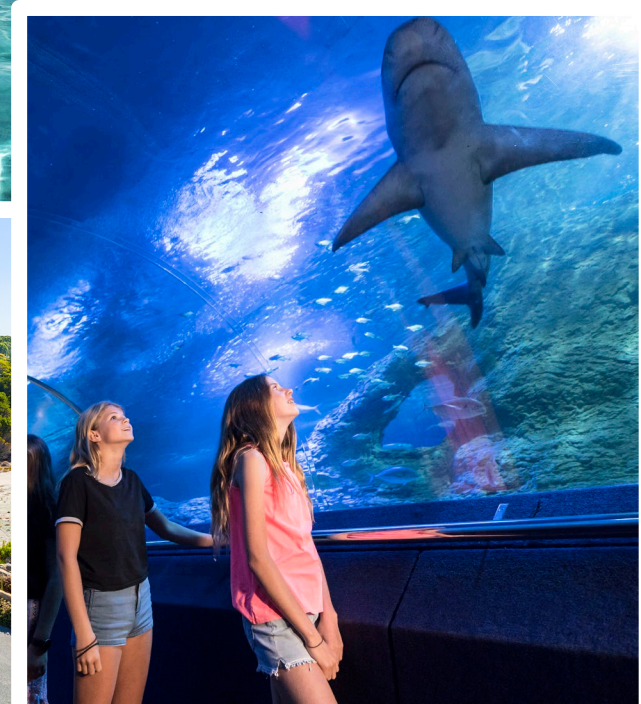
In Lancelin, visitors can enjoy numerous adventure activities including windsurfing, sandboarding, fishing and diving.

Inland, Gingin and Moore River offers wineries, fresh produce, picturesque countryside and adventure, while Yanchep National Park features a koala sanctuary, amazing limestone caves and educational experiences of Aboriginal culture.

Hillarys Boat Harbour is a popular location for visitors and locals, with an enclosed beach and variety of cafes, restaurants and retail outlets. Hillarys is also home to the Aquarium of Western Australia – one of Perth's premium attractions.

The Indian Ocean provides great conditions for swimming, surfing, fishing, kiteboarding as well as snorkelling and diving. Dual cycle and walking paths edge many parts of the coastline passing some of Perth's most iconic beaches such as Sorrento Beach, Scarborough Beach, City and Cottesloe Beach.

There are plenty of seaside cafes and restaurants to enjoy a meal or drink for breakfast, lunch or dinner. When visiting the Perth Beaches be sure to witness the spectacular sunsets over the stunning Indian Ocean – it is one of the few places in Australia this occurs.







# Sunset Coast Itinerary 1

[Click here for more Information](#)

[Accommodation](#)

[Attractions](#)

[Tours](#)

[Food & Drink](#)

[Retail](#)

## Morning

Start your day with breakfast at Cottesloe Beach or Swanbourne Beach as you watch the early morning joggers and swimmers enjoying the sun's first rays.

Travel north to the Reabold Hill Summit Lookout, offering amazing views from the highest natural point along the coast. At 85 metres above sea level, you can see the Indian Ocean, Perth City, Rottnest Island, Kings Park, and even glimpses of the Swan River.

Next, beach hop your way north stopping at City Beach, Floreat Beach and Scarborough Beach – one of Australia's finest surfing and swimming beaches. Stroll The Esplanade, join a surfing lesson, laze on the beach or take a dip in the Scarborough Beach Pool.

If you have time, enjoy the coastal walk between Scarborough and Trigg – you'll be treated to some amazing views of the coastline.

## Day

Continue north to Trigg Beach, where you can enjoy lunch overlooking the ocean. Continue north along the scenic West Coast Drive, stopping at Mettams Pool, Waterman's Bay and Marmion Marine Park (great for snorkelling and diving) and Sorrento Beach.

Spend the afternoon at AQWA – The Aquarium of Western Australia, located at Hillarys Boat Harbour. Discover WA's spectacular marine life on an underwater journey along our coast. Come face-to-fin with giant sharks, stingrays, turtles and a variety of fish in Australia's largest underwater tunnel and discover sea life up close at the Touch Pool.

If you want to get out onto the high seas join a deep-sea fishing expedition, go on a whale watching cruise (September – November) or charter a boat or yacht.

## Evening

End your day at Hillarys Boat Harbour. Laze on the sheltered beach, stroll along the boardwalks and through a myriad of boutique shops, and enjoy dinner at one of the many restaurants or bars while you watch the sky transform with colour as the sun sinks slowly into the Indian Ocean.

Why not spend the night along the coast and wake up to ocean views – there are a number of hotels, apartments and resorts located from Cottesloe to Hillarys to choose from.





# Sunset Coast Itinerary 2

[Click here for more Information](#)

[Accommodation](#)

[Attractions](#)

[Tours](#)

[Food & Drink](#)

[Retail](#)

## Morning

Start your day with breakfast at The Marina, Mindarie – the largest man-made marina in Australia. Marvel at the spectacular array of pleasure boats lining the harbour and find a variety of quality restaurants as well as a microbrewery. There is also a resort if you want to spend a night or two.

Journey north to Yanchep National Park. Walk along the raised boardwalk to view one of Australia's largest kooka colonies, descend below the earth on a guided adventure tour through the park's network of natural limestone caves (seasonal) and discover the culture of the Nyoongar people of Western Australia's southwest in an entertaining and informative session at the Wangi Mia Meeting Place.

There is also a 9-hole bush golf course, high ropes and zipline adventure course, tearooms and walk trails.

## Day

From Yanchep, head inland to the rolling green hills of the Gingin hinterland. Here you'll find a rich tapestry of fresh produce, heritage charm and beautiful scenery.

Stop for lunch at a local winery, before travelling back to the coast, along the Moore River to Guilderton, ideal for bushwalking, kayaking, canoeing and fishing.

Travel further north to the seaside town of Lancelin – a mecca for water and adventure enthusiasts. Laze on pristine beaches, watch as surfers battle the waves (or give it a go yourself), dive or snorkel amongst one of the 14 shipwrecks off the coast, and hire a board from town to enjoy sandboarding over the gigantic sand dunes or join a 4WD tour.

## Evening

End your day with fish and chips overlooking the beach while taking in a beautiful sunset.

Stay overnight at one of Lancelin's holiday parks or self-contained holiday homes.

# Swan Valley

---

Located 25 minutes north-east of Perth, the Swan Valley is Perth's premier food and wine region. There are more than 150 places to discover including wineries, breweries, distilleries, cideries, gourmet producers, restaurants and cafes, markets and artist studios. Join a wine tasting bus tour or cruise from the city or hire a car and follow one of the themed Swan Valley Trails:

**Fortified Wine Trail:** The Swan Valley create some of the most unique fortified wines found anywhere in the world, often blended from many vintages, and rated among the very best.

**Fresh Seasonal Produce Trail:** Sample the fresh seasonal produce and meet the people behind the produce.

**Fine Wine Trail:** A trail that visits all the wineries that have won trophies at the Swan Valley Wine Show.

**Wine & Art, Off The Beaten Track Trail:** Join vigneron and artists as they create handcrafted products in this authentic meet-the-maker experience.

**Cider And Ale Trail:** Discover an array of sparkling ciders and boutique ales.

**Bush Tucker And Beyond Trail:** Taste traditional bush tucker on this unique trail.

**Sweet Temptations Trail:** A journey of mouth-watering, world-class artisan produce handmade in the Swan Valley.

**Kids In The Valley Trail:** Enjoy family-friendly activities such as mini golf, super golf, mazes, water fun park (seasonal), farm animals, native wildlife, parks and playgrounds and more.

**Distillery Trail:** Visitors can experience five distinct and very different award-winning distilleries in less than a day.







# Swan Valley Itinerary

[Click here for more Information](#)

[Accommodation](#)

[Attractions](#)

[Tours](#)

[Food & Drink](#)

## Morning

Let your tastebuds indulge in a day of gourmet delight in the Swan Valley, just a short 25 minutes drive north-east from Perth City.

Start in the historic town of Guildford, the gateway to the Swan Valley. With its collection of antique stores, cafes and quaint colonial buildings it is well worth visiting. Stop in at the Swan Valley Visitor Centre to pick up a map that highlights the regions 150+ places to wine, dine and have fun. You can follow one of 8 themed trails, create your own itinerary or join one of the many tours available.

Enjoy a tasting at the coffee factory and spend the morning satisfying your sweeter side with locally made chocolate, nougat, ice-cream, nuts and honey. As the state's oldest wine growing region, there are plenty of cellar doors to visit, where you can taste some of the country's best Chenin Blanc, Verdelho, Shiraz and Petit Verdot varieties.

## Day

When lunchtime comes around, there are more than 70 places to choose from. From fine dining restaurants at some of the region's top notch wineries, to family-friendly casual eateries with playgrounds for the kids, as well as road side- stalls and markets selling just-picked local produce, you can also pull a hamper together to enjoy.

After lunch, have fun at some of the Swan Valley's many attractions. Feed kangaroos, have a photo with a koala and see a farm show at Caversham Wildlife Park; take the kids to Perth's Outback Splash with fun mazes and wildlife encounters and a fantastic water park that is open end- September to end-May; visit the cuddly animal farm or reptile park; have a go a supa-golf, mini-golf or paintballing; visit a variety of art galleries and gift shops; ride the vintage tram at Whiteman Park; and have fun at The Climb Zone – one of WA's best ropes courses.

## Evening

End your day with a drink and nibbles at one of the Swan Valley's breweries, cideries or distilleries.

There is so much to see and do in the Swan Valley, it's worth spending the night or longer. The region has a range of accommodation options including caravan and tourist parks, cottages, luxury hotels and apartments overlooking the vines, resorts and farm stays, all offering their own bespoke experience within the stunning region.

# *Rottnest Island/ Wadjemup*

Rottnest Island, located 19 kilometres off the coast of Perth, is accessible by ferry from Perth City, Fremantle and Hillarys Boat Harbour and seaplane from Perth City. Rottnest Island offers picturesque scenery, large populations of marine life and some of the world's finest beaches and pristine bays.

Getting around is best done on foot, by bicycle (hire is available on the island or through the ferry companies) or by bus – there is a guided bus tour and hop-on-hop-off bus. There are also guided walking tours, segway tours and electric bike tours.

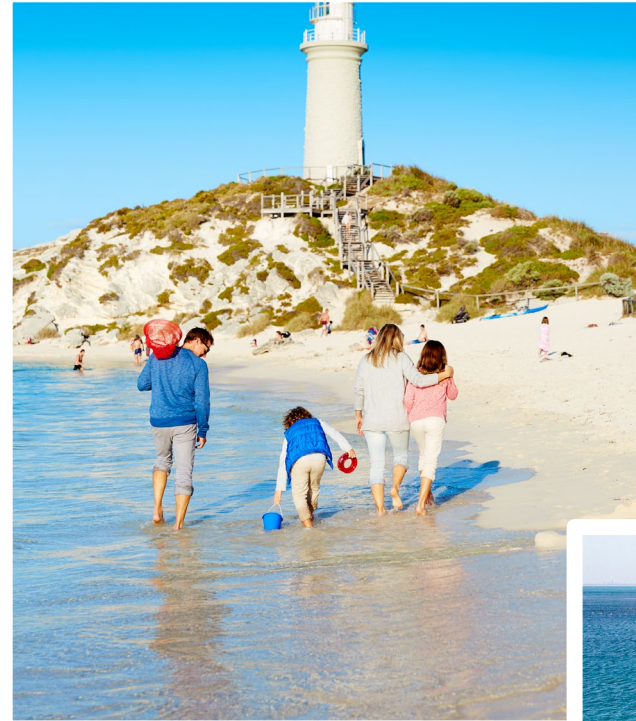
Traverse the island's unique landscapes along the Wadjemup Bidi; a series of walk trails across spectacular coastal headlands and past stunning inland lakes and encounter both natural and man-made attractions along the way.

Aquatic activities include snorkelling, diving, adventure cruising, kayaking, stand-up paddle boarding and swimming –there are over 60 beaches, 14 shipwrecks and stunning limestone reefs teeming with wildlife. Rottnest Snorkel offer guided snorkel tours.

Learn about the island's rich history at the Rottnest Island Museum, Lomas Cottage, Pilot Boat House, Vincent Way and Salt Store and head up to the lighthouse for amazing views. There is also a golf course, movie theatre, cafes and restaurants, art gallery and mini-golf course.

Rottnest Island abounds with wildlife including bottlenose dolphins, fish and coral, whales in season, seals, several species of shorebirds and of course, the Quokka.

Accommodation on the island ranges from premium resort rooms and eco-glamping tents, to heritage-listed cottages and holiday units.







# *Rottnest Island Itinerary*

[Click here for more Information](#)

[Accommodation](#)

[Attractions](#)

[Tours](#)

[Food & Drink](#)

## *Morning*

---

Catch a ferry from Perth City, Fremantle or Hillarys Boat Harbour or travel by air and enjoy incredible views of Perth's stunning beaches and the island itself.

Pick up a map from the Visitor Centre and hire a bike to explore the island at your leisure, get around on the hop- on-hop-off bus or join a guided bus, walking, Segway or electric bike tour. Or follow your own path along the Wadjemup Bidi - 45km of trails across the island, each boasting culturally and environmentally significant landmarks to experience.

Visit the Bathurst and Wadjemup Lighthouses, the Oliver Hill Gun and Tunnel featuring military remnants from WWII, the stunning Salt Lakes, the island's rugged northern beaches, the beautiful West End boardwalk and Cathedral Rocks where you can see New Zealand fur seals from a viewing platform.

## *Day*

---

After a morning exploring the island, head back to the main settlement for lunch overlooking the ocean or join a wild seafood experience where you can catch crayfish and indulge in a gourmet lunch onboard.

Explore the island's rich marine environment on a snorkel tour or hire dive or snorkel equipment. Jump aboard an eco adventure cruise or luxury catamaran or just soak up the sun on one of the many amazing beaches.

Learn about the island's history and culture at the Rottnest Island Museum, Salt Store Gallery and Exhibition Centre, Lomas Cottage and Pilot Boat House. Play a round of golf at the 9-hole golf course or mini-golf course, or relax at the day spa. You can even skydive onto the beach! Throughout your day keep a watch for the friendly marsupials that inhabit the island, the Quokka!

## *Evening*

---

In the evening, catch one of Rottnest Island's amazing sunsets from Thomson Bay and enjoy a meal at Hotel Rottnest, Lontara, Isola Bar E Cibo, Pinky's Rottnest Island or Frankies on Rottnest Island. The island even has its own indoor deckchair cinema where you can catch the latest release movies.

There is so much to see and do on the island, one day isn't enough! Consider staying a night or two, and choose from a range of accommodation options, from budget cabins and campsites to premium resort rooms, heritage cottages and eco-glamping tents.

# Fremantle

Fremantle, located 20km south of Perth City, is accessible by train, car or river cruise. Visitors can explore Fremantle on foot, bike or on a guided tour.

Fremantle is one of the world's best-preserved examples of a 19th century port seascape and is known for having Western Australia's largest display of heritage buildings. Its numerous historic attractions, museums and galleries tell a story of convict prisoners, maritime heroes and pioneers.

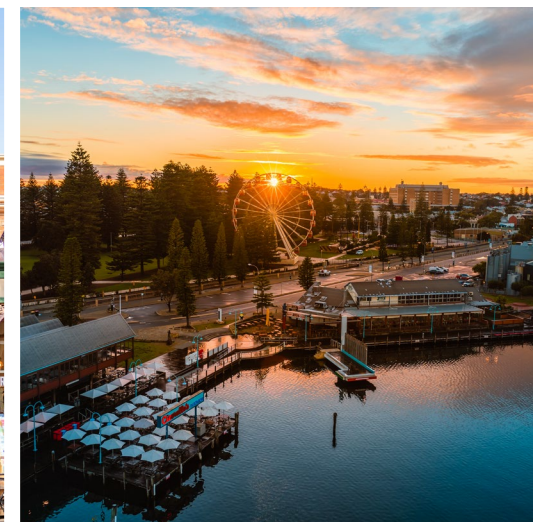
The vibrant streets of Fremantle make it a popular place to wine and dine with weekend markets, pop up food outlets, casual and alfresco dining, exciting events and festivals and heritage pubs.

Visitors can browse through stunning art galleries, studios and local markets as well as discover the city's range of Australian fashions and independent design boutiques.

Discover Fremantle's fascinating past and rich colonial and maritime history at The Round House Precinct, Fremantle Prison, WA Maritime Museum and WA Shipwrecks Museum.

The Fremantle Fishing Boat Harbour is also popular, with its numerous seafood restaurants, micro-brewery, serviced apartment accommodation and Bathers Beach.

Fremantle is also the departure point for ferries to Rottnest Island.







# Fremantle Itinerary

[Click here for more Information](#)

[Accommodation](#)

[Attractions](#)

[Tours & Hire](#)

[Food & Drink](#)

[Retail](#)

## Morning

From Perth City, catch the train, join a cruise or take a leisurely drive down the coast to Fremantle. Getting around is easy – hire an electric bike, use the free CAT bus, join a guided walking or peddle-bike tour or pick up a map from the Fremantle Visitor Centre and go your own way.

If visiting over the weekend make your first stop the historic Fremantle Markets showcasing a diversity of arts, craft and produce, and watch the many street performers. Take a stroll down the 'Cappuccino Strip' and South Terrace to enjoy a freshly brewed coffee before heading to trendy High Street where you can browse Aboriginal art galleries, book shops, boutique fashion stores and admire the beautiful heritage buildings.

Continue on to the Fremantle Arts Centre, housed in a convict built neo-gothic style building surrounded by beautiful gardens, where you can check out the latest exhibit, join an art course or listen to some live music.

## Day

Fish and chips for lunch is a must in Fremantle, and the best place to find the freshest local seafood is the Fremantle Fishing Boat Harbour. You'll also find Fremantle's own micro-brewery – Little Creatures.

After lunch explore Fremantle's intriguing convict and maritime history. At the Fremantle Prison, Fremantle's premier heritage attraction, you can explore the prison's fascinating history on a day tour or tunnel adventure tour.

The WA Maritime Museum houses unique galleries that explore Western Australia's relationship with the sea and the WA Shipwreck Museum houses hundreds of relics from ships wrecked along WA's treacherous coastline, including the original timbers from the 17th century Dutch Batavia shipwreck.

The Round House, the state's first permanent building, is an integral stop on any self-guided tour discovering Fremantle's history.

## Evening

End your day with a meal at one of the many eateries serving food from around globe. Catch a stunning sunset with a drink in hand at Bathers Beach or from the headland near The Round House Precinct which overlooks the river mouth and has uninterrupted views of Cockburn Sound.

Fremantle is well known for its live music, so make sure you grab a gig guide from the Fremantle Visitor Centre and catch a live performance at one of the many bars, pubs, nightclubs and music venues.

If you're after something unique why not head to the Fremantle Prison and join their spooky night-time Torchlight Tours.

After a full day of adventure, spend the night at one of Fremantle's many accommodation options including hotels, bed and breakfasts, and apartments.

# Perth Hills

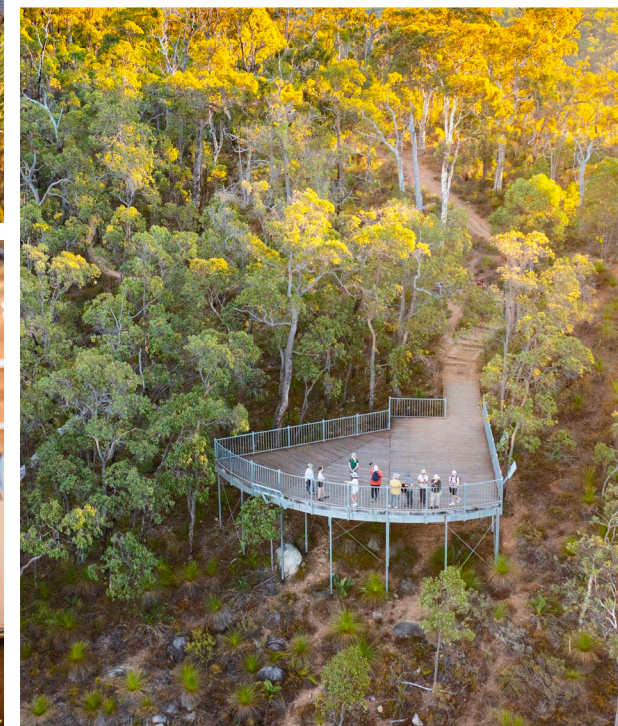
The Perth Hills, 45 minutes inland from Perth, offers scenic self drives through national parks, old growth forests and character towns including Mundaring, Kalamunda and Armadale. Amongst the rolling hills you'll find fruit orchards and wineries, markets, art galleries and artist studios, luxury retreats, lakes and waterfalls, and scenic walking and cycle trails.

With the first vineyards in the Perth Hills planted in the 1880s, the region now boasts a well-established wine scene with a fantastic food and wine trail and cider and brews trail to follow. Visitors will also find cideries, fresh produce, country pubs, taverns and plenty of cafes and restaurants.

Surrounded by national and state forest the region boasts more than 40 bike trails, walk trails and wildflower trails, as well as scenic lookouts and picnic spots. The Perth Hills also marks the starting point for the famous 1000km long Bibbulmun Track, one of the world's great long distance walk trails, and the world-class off-road cycling trail, the Munda Biddi Bike Trail.

There are also several arts, natural and heritage attractions and landmarks including Araluen Botanic Gardens, Mundaring Weir and No 1 Pump Station, Kalamunda History Village, Railway Reserves Heritage Trail, Perth Observatory, wildlife parks, the Mundaring Arts Centre and The Bert Tyler Vintage Machinery Museum.

Visitors can self-drive or join a tour that will visit some of the region's best attractions, wineries and art galleries.







# Perth Hills Itinerary

[Click here for more Information](#)

[Accommodation](#)

[Attractions](#)

[Tours & Hire](#)

[Food & Drink](#)

[Retail](#)

## Morning

Head 45 minutes inland and discover the Perth Hills, where you'll find national parks, meandering drives and vibrant villages.

Starting in Mundaring, stop at the Perth Hills Mundaring Visitor Centre for information and maps, on your way to the Mundaring Weir - one of the world's greatest engineering projects and the start of the pipeline that pumped water 700km east to the Kalgoorlie goldfields. Visit the Number 1 Pump Station Museum and the Perth Hills Discovery Centre - the start of many of the regions walking trails, particularly beautiful in spring. Lake Leschenaultia, is popular in summer for swimming, picnicking, camping and canoeing.

Travel through State Forest to Kalamunda where you can potter through gift stores, sample local produce, and discover local history at the Kalamunda History Village and Zig Zag Cultural Centre & Gallery. Further information on the area can be gathered from the the Perth Hills Kalamunda Visitor Centre.

## Day

From Kalamunda follow the scenic Bickley Valley Wine Trail, where you can have lunch at one of the regions 14 boutique wineries or cideries. Along the way enjoy vistas of vineyards and orchards and stop at roadside fruit stalls and art galleries.

Continue south to Armadale. Visit the Bert Tyler Vintage Machinery Museum and the Armadale Outpost Telegraph Centre, great for history enthusiasts and lovers of antiques, and the gorgeous Araluen Botanic Park, famous for its spring tulip display and a perfect setting for an afternoon tea at the historic Chalet Healy Café.

There are also some great walks in the area, art galleries, weekend markets, many fruit orchards, cheese factories and a reptile park. The Perth Hills Armadale Visitor Centre offers a discovery tour that will take you on a journey through the area's history, heritage and culture, as well as information and maps about the region.

## Evening

Spend the evening under the stars at the Perth Observatory or Kookaburra Cinema (seasonal). Located in the Bickley Valley, the heritage-listed Perth Observatory is a unique tourist attraction, where science and history come together to engage visitors in astronomy, space science and Aboriginal sky lore. See the stars and planets through the largest public viewing telescope in WA.

Kookaburra Cinema in Mundaring (November to April) seats 310 in traditional steel framed and canvas slung deckchairs and also has picnic tables and grassed areas. Surrounding by state forest it is the perfect place to catch a classic or new release movie under the stars.

Spend the night in the Perth Hills at a stunning homestead or guesthouse, spa retreat, caravan park, glamping experience, farm stay or motel.

# Rockingham

Rockingham is located 45km south of Perth by train, bus or car. The city fronts onto the sheltered waters of Cockburn Sound, with Garden Island, Penguin Island and Seal Island making up the beautiful Shoalwater Islands Marine Park.

Visitors can catch the Penguin Island Ferry and meet the world's smallest penguins at the Penguin Island Discovery Centre with feeding shows three times daily (September to June); get up close with the local wild dolphins on a swim with dolphins tour (available June to September); explore the wildlife sanctuary zone on a glass bottom boat cruise; learn about the nesting seabirds (there are around 50 species in the area); and view the rare Australian sea lions lazing on the beach and frolicking in the waters surrounding Seal Island.

Those looking for even more adventure can skydive onto the beach, join a sea kayaking wildlife tour, learn to kiteboard, stand up paddle board or jet pack, snorkel or dive amongst the limestone reefs and wrecks at the West Coast Dive Park, or simply relax on the beach at Safety Bay or Rockingham Beach.

The Rockingham Foreshore offers plenty of seaside dining and entertainment, large grassed areas with playgrounds and BBQ facilities, and a new boardwalk with direct access to the beach. Wineries can be found in the surrounding area, history buffs can set out on several heritage trails and there are first-class championship golf courses nearby.







# Rockingham Itinerary

[Click here for more Information](#)

[Accommodation](#)

[Attractions](#)

[Tours](#)

[Food & Drink](#)

## Morning

Travel 45km south of Perth by train, bus or car to Rockingham. The city fronts onto the sheltered waters of Cockburn Sound, with Garden Island, Penguin Island and Seal Island making up the beautiful Shoalwater Islands Marine Park.

Catch the ferry to Penguin Island to meet the world's smallest penguins with feeding shows three times daily; get up close with the local wild dolphins on a swim with dolphins tour; explore the wildlife sanctuary zone on a glass bottom boat cruise where you'll get up close to the reefs and islands, learn about the nesting seabirds and view the rare Australian sea lions at Seal Island.

## Day

Head back into Rockingham, and stroll along the boardwalk and foreshore. There are approximately 3km of parkland along the foreshore where you can enjoy a BBQ lunch or pick up some fish and chips to enjoy overlooking the ocean.

Spend the rest of the afternoon exploring the area's heritage trails, walks and drives, fishing off the jetty, playing a round of golf at one of the picturesque courses, discover the wineries found in the region, or just enjoy the relaxed coastal lifestyle that Rockingham is famous for.

If you're looking for adventure, skydive onto the beach, join a sea kayaking wildlife tour, learn to kiteboard, stand up paddle board, snorkel or dive amongst the limestone reefs and wrecks at the West Coast Dive Park.

## Evening

In the evening, join Djurandi Dreaming for a Torchlight Tour of Lake Walyungup or Lake Richmond. Explore the lakes, surrounds, flora and fauna while hearing enchanting dreamtime stories. Day time cultural tours of Point Peron are also available.

Stay overnight at an apartment hotel in Rockingham and enjoy a meal at one of the ocean view restaurants along the foreshore.

# Mandurah & Peel

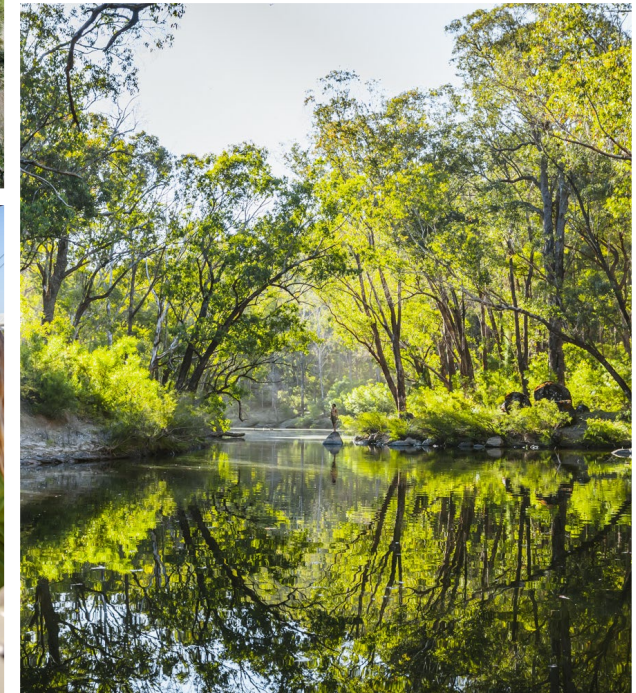
The Mandurah and Peel region stretches from the white sands of the coast to the jarrah forests of the Darling Scarp. Visitors can drive or catch the train from Perth City and spend the day or a few nights, with a wide range of accommodation available from beachside resorts and holiday parks to forest retreats.

Mandurah offers great beaches, vast waterways and canals, dining and entertainment, and a world class golf course with ocean views. A popular activity for visitors is to cruise along the Venetian style canals, lined with amazing dollar homes, and the estuary to see the resident dolphins. These waterways provide aquatic activities such as boating, fishing, swimming and crabbing.

The Mandurah Ocean Marina, Dolphin Quay, and the Eastern Foreshore are home to cafes and restaurants, a performing arts centre, picnic and play areas and a fun park.

Inland, adventure activities abound on the waters of the Murray River and in the forests and farmland surrounding Jarrahdale and Serpentine, Pinjarra, Waroona, Dwellingup and Boddington. Activities include hiking and mountain biking, kayaking and canoeing, camping, horse riding, and fishing. Families will enjoy the high ropes course and the Hotham Valley Tourist Railway – which operates a vintage steam train from May to October.

The Yalgorup National Park contains 11 coastal lakes and wetlands which are home to hundreds of migrating birds and some of the first living creatures on earth – the captivating Thrombolite living fossils. Preston Beach at the southern end of the park is a superb location for four-wheel driving, swimming, picnicking or fishing from its pristine white sandy shores.







# Mandurah Itinerary

[Click here for more Information](#)

[Accommodation](#)

[Attractions](#)

[Tours & Hire](#)

[Food & Drink](#)

[Retail](#)

## Morning

Journey an hour south by car, catch the train or join a tour to Mandurah, famed for its beautiful waterways and relaxed holiday atmosphere.

Start the day with a cruise through the award-winning canals lined with opulent houses, marinas filled with million dollar boats and the picturesque Harvey Estuary, home to many migratory birds and friendly bottlenose dolphins. Or join an eco wildlife kayaking tour along the Peel Harvey Estuary.

If you are travelling from November to April you may even like to try your hand at catching some of Mandurah's famous crabs in the shallow waters of the Peel Inlet! If you need help, Mandurah Cruises operate a 'catch-and-eat' crabbing tour.

## Day

Explore the Mandurah Ocean Marina and Mandurah Boardwalk, where you can enjoy a delicious fish and chip lunch (or hire a an eco BBQ boat!) followed by award- winning ice-cream.

After lunch take a dip at the beach, play a round of golf overlooking the ocean or explore the canals and waterways by pirate ship, waterbike, jet ski or boat. Make sure to stop by the Black Stump Gallery featuring local artist Emma Blyth whose unique artworks are inspired by Australia's rugged outback to the beautiful beaches and forests of the southwest.

In the afternoon, travel south along the coast to the Yalgorup National Park's Lake Clifton, home to the Thrombolites – some of the first living formations on Earth!

## Evening

After all your exploring why not stay the night in Mandurah overlooking the ocean or canals. You'll find plenty of options for dinner along the boardwalk or Eastern Foreshore and you can catch some live music or a show at the Mandurah Performing Arts Centre.

If you're visiting during Christmas you will not want to miss Mandurah's famous Christmas Lights Cruise. Sing along to your favourite Christmas carols as you cruise through the wonderland of Christmas lights reflecting onto the water from Mandurah's luxury canal homes.



## Morning

Start your day in Kings Park and marvel at the amazing city and river views from the Kaarta Gar-up Lookout, State War Memorial and the Lotterywest Federation Walk Way. Discover the state's unique and diverse plant life in the Western Australian Botanic Garden, browse through the Aspects of Kings Park gift shop and enjoy breakfast at the Botanical Café.

Join the hop-on-hop-off bus, use the free public transport or join a guided walking tour to visit some of Perth's major attractions.

Stop at Barrack Square to visit The Bell Tower, one of the largest musical instruments on earth, and Elizabeth Quay; watch a gold pouring demonstration at The Perth Mint; explore the stunningly restored State Buildings and take the kids to Scitech – Perth's interactive science discovery centre and planetarium.

## Day

Enjoy lunch at one of the many cafes in the CBD and spend the afternoon shopping along the Murray and Hay Street Malls, at Watertown Brand Outlet Centre and stylish King Street, Wesley Quarter and Cathedral Square.

If you prefer art and culture, head to the Perth Cultural Centre and see Australian and international art at the Art Gallery of WA and explore the WA Museum Boola Bardip, with exhibits featuring the formation of the Universe, WA inventions, extinct and newly discovered species, and our State's diverse communities.

Adventure seekers can climb to the top of the Matagarup Bridge or Optus Stadium, kayak on the Swan River or join a segway or bike tour.

## Evening

As the sun goes down, head to East Perth or Elizabeth Quay for ambient dining on the Swan River, choose from a range of cuisines in Northbridge, explore the many sophisticated restaurants lining St George's Terrace or join one of the many small bar walking tours.

If you want to get out of the CBD, but not venture too far, jump in a taxi or use public transport and head to Crown Perth, Leederville, Subiaco, Beaufort Street, North Perth, South Perth or Victoria Park – all these precincts are jammed packed with a selection of great pubs, bars, cafes and restaurants.

Perth is also home to many cultural, sporting and community events so find out what's on when you are visiting. You might catch an international act at RAC Arena, a play at the State Theatre Centre, a comedy show at the Comedy Lounge, an opera or ballet at His Majesty's Theatre, a sporting match at Optus Stadium or a concert at the Perth Concert Hall.



# Avon Valley

Just over an hours' drive east of Perth, the Avon Valley offers beautiful countryside, some of WA's oldest settlements and a variety of food and arts producers. Visitors can enjoy hot air ballooning (seasonal), picnics on the banks of the Avon River, sample local produce, have a drink at a country pub, stargazing, and exploring heritage buildings, museums and art galleries.

Northam is WA's largest inland town and boasts over 185 heritage listed buildings, restaurants and cafes, the state-of-the-art Bilya Koort Boodja Nyoongar Cultural Interpretive Centre and some amazing public art including the 38m high mural that marks the start of WA's PUBLIC Silo Trail. Established in 1831, York was the first inland European settlement in WA and boasts fine examples of colonial architecture. Its heritage precincts include The York Residency Museum, Old Gaol & Courthouse and York Motor Museum.

Toodyay is nestled between scenic hills and the Avon River, and is known for its colonial history and architecture. Connor's Mill is a working historical flour mill, and the Old Gaol houses a museum dedicated to the history of the region.

The towns of Goomalling, Beverley and Brookton also offer open countryside, fascinating history and heritage buildings, country markets and local arts and crafts.

An hour and a half drive north of Perth lies the 19th century Spanish missionary town of New Norcia – the only monastic town in Australia. Benedictine monks live a life of prayer, with the township offering guided tours and samples of local produce.

The Avon Valley is considered an astrotourism hotspot – it's clear night skies provide some incredible stargazing opportunities.





# Avon Valley Itinerary

[Click here for more Information](#)

[Accommodation](#)

[Attractions](#)

[Tours & Hire](#)

[Food & Drink](#)

## Morning

The Avon Valley is a patchwork of rolling green hills, undulating farmland, country towns and offers scenic walk and drive trails, fresh produce and wine, and adventure on the Avon River.

Drive through beautiful state forest and picturesque farmland past the small towns of Brookton and Beverley – both boast fine examples of colonial architecture, pioneering history, displays of local art and scenic walking trails – to York, the first inland European settlement in WA.

Dating back to 1831, York is renowned for its Victorian and Federation architecture reflected in the beautifully restored and maintained buildings including the York Town Hall, Courthouse Complex, Old Post Office and Residency Museum. Straddling the Avon River, York is bordered by outstanding natural beauty with several Heritage Walking Trails available. Wander down the main street and you'll find a number of cafes for morning tea.

## Day

Travel north to Northam, WA's largest inland town situated on the banks of the Avon River. Cross the suspension footbridge over the river, explore the town's rich collection of historic buildings including Morby Cottage and the Old Northam Railway Station, discover many craft and curio shops, and stop at one of Northam's breweries, cafes or bistros for lunch.

After lunch visit the Bilya Koort Boodja – Centre for Nyoongar Culture & Environmental Knowledge. The centre has an interpretive space and a retail outlet.

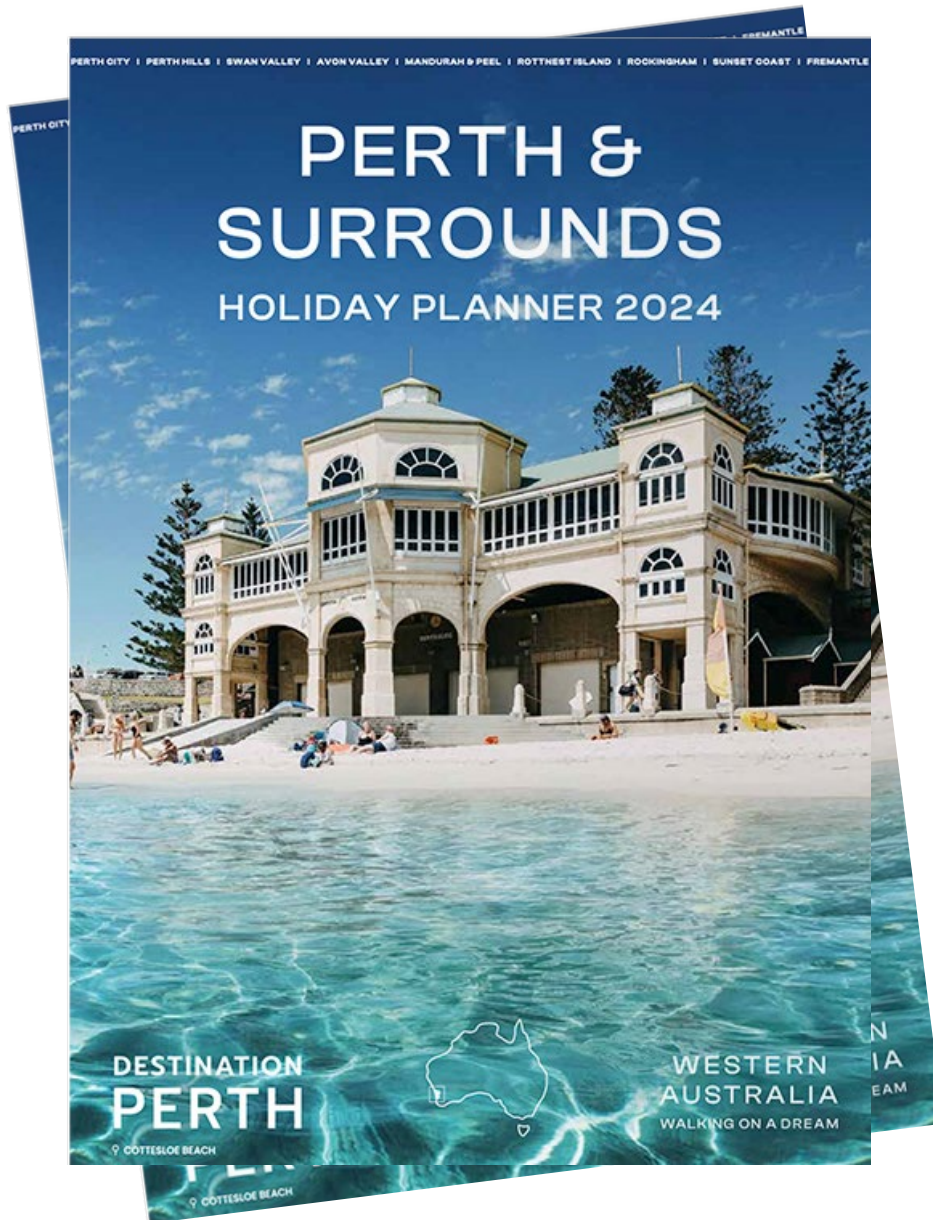
Travel north to Toodyay, where you'll find examples of 19th century architecture reflecting the early convict era. Travel back 150 years to the time of Moondyne Joe at the old Newcastle Gaol and discover working historic machinery at Connor's Mill. In town you will find fine examples of locally worked art, woodwork and photography and there are also a number of places to stop for afternoon tea.

## Evening

Consider spending the night in Northam, Toodyay or York – there are plenty of farm stays, bed and breakfasts and guest houses to choose from – and enjoy an early morning hot air balloon ride over the countryside (May – October).

Travel through the rural town of Goomalling, to New Norcia. New Norcia is Australia's only monastic town where Benedictine monks move quietly amongst historic buildings on their way to pray together seven times daily. Join a town tour and see inside the magnificent buildings and learn about the towns unique history, visit the Museum & Art Gallery to see an eclectic collection of memorabilia displayed alongside European religious art and contemporary artworks, join the monks for one of the seven daily prayer sessions in the chapel, and enjoy a light meal from The Salvado Café. Accommodation is also available in the monastery guesthouse.





# *Find out more about Destination Perth*

Visit our website [destinationperth.com.au](https://destinationperth.com.au)

Download a copy of the [Perth Holiday Planner](#)

**Contact us via email:**

**Sonja Mitchell, CEO**  
[ceo@destinationperth.com.au](mailto:ceo@destinationperth.com.au)

**Jade Brown, Marketing Manager**  
[tourism@destinationperth.com.au](mailto:tourism@destinationperth.com.au)

**Laura Anderson, Business Development Manager**  
[bdm@destinationperth.com.au](mailto:bdm@destinationperth.com.au)

**Rachel McGerr, Web Content and Membership Manager**  
[marketing@destinationperth.com.au](mailto:marketing@destinationperth.com.au)

**Tamsin Furr, Marketing Executive**  
[info@destinationperth.com.au](mailto:info@destinationperth.com.au)

**Contact with us:**

[@destinationperth](#)  
[#seeperth](#)

