



VISITOR MAPS

IndianaDunes.com

Explore the communities that make our destination truly unique. Inside you'll find a map of the Indiana Dunes area with a grid to help you find businesses, organizations, and attractions marked throughout our Activities Guide. There are also more detailed maps of the National and State Parks as well as the entire Indiana Dunes area. Be sure to visit indianadunes.com/getting-here for more information.



MUST SEE & DO

Look for a ★ to find our Must See & Do locations and a 🐾 for places that are pet-friendly!

GETTING HERE BY CAR

From Indianapolis, IN (south)

Take Interstate 65 north to Interstate 94 east. Then, take State Rd. 49 north (exit 26B) into the Indiana Dunes area.

From Toledo, OH (east)

Take Interstate 80/90 west toward Chicago (portions toll) and cross into Indiana before taking exit 31 onto State Rd. 49 north into the Indiana Dunes area.

From Chicago, IL (west)

Take Interstate 90/94 east from Chicago towards Indiana. Then, take State Rd. 49 north (exit 26B) into the Indiana Dunes area.

From Grand Rapids, MI (north)

Take Interstate 196 west towards Holland. Merge onto Interstate 94 west towards Chicago/Niles and cross into Indiana. Then, take State Rd. 49 north (exit 26B) into the Indiana Dunes area.

BY AIR

Midway International Airport (MDW), O'Hare International Airport (ORD), and the South Bend Regional Airport (SBN) are each about an hour away from the Indiana Dunes area. Or, if you've got your own set of wings, fly into Porter County Regional Airport (VPZ)—it's open 365 days a year and has no landing fees.

MDW & ORD: flychicago.com

SBN: flightsbn.com

VPZ: vpz.org

BY BUS

For those who want to minimize their carbon footprint (or want someone else to do the driving), Greyhound and Coach USA bus lines run regular services to the Indiana Dunes area.

Greyhound using Barons Bus: greyhound.com or baronsbus.com

Coach USA: coachusa.com

BY RAIL

The South Shore Line from Chicago to South Bend runs approximately every hour and offers multiple stops within walking distance of Indiana Dunes National Park sites and the Indiana Dunes State Park. On select days from spring to fall, cyclists can make great use of their bike-friendly train cars.

South Shore Line: mysouthshoreline.com



Indiana Dunes Visitor Center

P100

Make this your first stop, and our front desk destination ambassadors will help you customize your dunes experience. You'll also be able to stroll the grounds, walk through an ever-changing exhibit room, learn about the Dunes at our in-house movie theater, and buy mementos in our gift shop.

1215 N. State Rd. 49, Porter
219-926-2255

indianadunes.com



1 Paul H. Douglas Center for Environmental Education

P53

The National Park's western visitor center hosts exhibits, classrooms, and provides access to the 3.4 mile Paul H. Douglas (formerly Miller Woods) Trail.

100 N. Lake St., Gary



2 West Beach

P596

A bathhouse, a huge swath of sand, and a stationed summer lifeguard make this beach one of the most popular Lake Michigan spots. For inland fun, climb the 250+ stairs of the Diana of the Dunes Dare and Dunes Succession Trail.

376 N. County Line Rd., Gary



3 Portage Lakefront and Riverwalk

P123

This 57-acre area features an enclosed pavilion, seasonal food services, restrooms and a breakwater for fishing and bird watching.

6150 U.S. 12 (100 Riverwalk Rd.), Portage



4 Cowles Bog Trail

P10

This is where Henry Chandler Cowles conducted his study of dunes' vegetation succession. Pass through wooded dunes and wetlands until you reach a quiet beach.

1618 N. Mineral Springs Rd. Porter



5 Bailey Homestead and Chellberg Farm

P53

Bailey Homestead is named for Joseph Bailey, the first known non-native region resident around 1820, while Chellberg Farm looks much like it did in the early 1900s.

618 N. Mineral Springs Rd., Porter



6 Porter Beach

P66

A popular gathering spot for splashing in the water, playing beach sports, and catching some rays next to high dunes. There are bathrooms and a small foot wash area.

3057 Wabash Ave., Porter



7 Indiana Dunes State Park

P1800

The Indiana Dunes State Park is 2,182 acres of dunes, marshes, swamps, hardwood forests, white pine groves, and a summer lifeguarded beach. The park has 16.5 miles of trails, including The 3 Dune Challenge, and offers camping and a park naturalist.

1600 N. 25 East, Chesterton



8 Glenwood Dunes Trail

P40

Cross over two ancient dune ridges created as Lake Michigan receded 11,000 years ago. This trail is used for hiking, horseback riding, and cross-country skiing.

1475 N. Brummitt Rd., Chesterton



9 Kemil Beach

P81

Enjoy one of the most scenic drives in Porter County getting to the Kemil Road Beach parking lots. Then enjoy a nice stretch of beach or walk down to Lake View Picnic area.

27 N. East State Park Rd., Beverly Shores



Star Beach



ing is limited at this prime spot
the Lake View Picnic Area and
historic Century of Progress
s. Enjoy this beautiful beach in a
potential neighborhood.

V. Lake Front Dr., Beverly Shores



View Beach & Picnic Area



easy access from your car to
ing area with a stunning view,
View is also a popular spot for
ing the beach with picnic shelters
looking the lake.

Lake Front Dr., Beverly Shores

Wood Campground



campground has 67 reservable
ed sites with restrooms and
ers available. There is no
ical hookup.

12 and Broadway, Beverly Shores
ation.gov

13 Central Avenue Beach



A great place to hike flower-filled
fields, marshes, and woodlands, bike
the Calumet Bike Trail, or watch bank
swallows, shorebirds, and waterfowl.

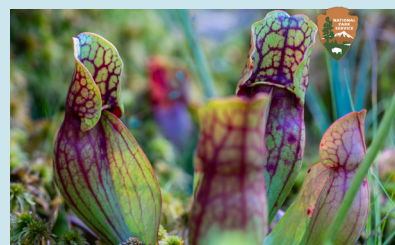
151 Central Ave., Michigan City

14 Mount Baldy & Beach



The largest "living" dune in the National
Park, Mount Baldy moves about four
feet every year, burying everything in its
path, including trees. While the beach is
open year-round, all hikes to the summit
must be led by authorized Indiana
Dunes National Park rangers.

101 Rice St. (U.S. 12), Michigan City



15 Pinhook Bog & Upland Trail



A floating boardwalk traverses the
landscape where you'll see insect-
eating plants and unexpected
environments. Upland Trail is open
year-round, but Pinhook Bog is only
accessible on select days.

946 N. Wozniak Rd., La Porte



	Camping		Nature Center
	Equestrian Trails		Paddling
	Fee		Parking
	Gift Shop		Pet-Friendly
	Hiking		Picnicking
	Lifeguards		Restroom/Portables
			Snack Bar
			Swimming Beach

	Interstate		US Hwy		State Hwy
	Freeway		Water Trail		Hiking Trail
	Tollway Freeway		Cycling Trail		National Park
	Highway		Wetland		State Park and State Nature Preserve within boundary of the National Park
	Primary Road				
	Secondary Road				
	Stream				
	County Line				
	Point of Interest				
	Train Station				

A B C D E F G H I J K L M N O P Q R S T U V W X Y



INDIANA DUNES AREA MAP GUIDE

Each listing in the Indiana Dunes Tourism's Activities Guide ends with a letter and number combination that make a map coordinate. Use the grid to help you locate the places listed in the guide.

FIND YOUR ACCOMMODATION

Finding a hotel in the Indiana Dunes area is easy. Just use the directory to find which one best suits your needs.

DUNELAND COMMUNITIES

- 1 Al & Sally's Motel, Michigan City (Pines)
- 2 At Home in the Woods Bed & Breakfast, Chesterton 🐾
- 3 Best Western Indian Oak, Chesterton
- 4 Comfort Inn & Suites - Porter, Porter
- 5 Dunes Vacation Rental, Beverly Shores
- 6 DunesWalk Inn at the Furness Mansion, Chesterton
- 7 Dunewood Campground, Beverly Shores 🐾
- 8 Fairbridge Inn Express, Chesterton 🐾
- 9 Hilton Garden Inn Chesterton, Chesterton
- 10 Indiana Dunes State Park Campground, Chesterton 🐾
- 11 Quality Inn - Chesterton, Chesterton
- 12 Rileys Railhouse Bed & Breakfast, Chesterton 🐾
- 13 Sand Creek Campground, Chesterton 🐾
- 14 Spring House Inn, Porter
- 15 Waterbird Lakeside Inn, Chesterton

PORTAGE

- 16 Affordable Suites of America Portage
- 17 Baymont by Wyndham Portage 🐾
- 18 Best Western Plus Portage Hotel & Suites
- 19 Country Inn & Suites by Radisson - Portage
- 20 Days Inn by Wyndham Portage
- 21 Hampton Inn Portage
- 22 Holiday Inn Express & Suites Portage
- 23 Lakeshore Camp Resort 🐾
- 24 Portage Inn
- 25 Quality Inn & Suites - Portage 🐾
- 26 Super 8 Motel by Wyndham Portage 🐾
- 27 Travel Inn 🐾
- 28 Woodland Village RV Lots and Mobile Home Park 🐾

VALPARAISO

- 29 The Aberdeen Inn & The Abbey 🐾
- 30 Best Western University Inn at Valparaiso
- 31 Country Inn & Suites by Radisson - Valparaiso
- 32 Fairfield by Marriott - Valparaiso
- 33 Hampton Inn & Suites Valparaiso
- 34 Holiday Inn Express & Suites Valparaiso
- 35 Pikk's Tavern & Inn
- 36 Songbird Prairie Bed and Breakfast Inn and Spa
- 37 Sunset Hill Farm County Park Campground 🐾
- 38 Super 8 by Wyndham Valparaiso
- 39 Valparaiso Inn Bed & Breakfast

VISIT US ONLINE AT
INDIANADUNES.COM

Indiana
Dunes
Tourism's
Activities
Guide

SAFETY TIPS



WATER SAFETY

Do not swim if there is a *Rip Current Warning* or if there are large, crashing waves present. These currents are powerful enough to carry even strong swimmers out into Lake Michigan. **If you get caught in a rip current, do not try to swim against it.** Instead, swim parallel to the shoreline until you are out of the current. Never go swimming alone.

nps.gov/indu/planyourvisit/safety.htm

indianadunes.com/explore-the-dunes/dunes-101/beach-safety-weather



ALERTS & CONDITIONS

Visit the Indiana Dunes National Park website and click the “Plan Your Visit” tab to check the latest weather alerts, conditions, and beach closures.

219-395-1882

nps.gov/indu/planyourvisit/conditions.htm



BUG BITES

Check yourself for ticks after being outdoors. Ticks and other biting pests can carry disease. Use insect repellent and wear light colored, long-sleeved shirts and tucked-in pants to help prevent both tick and mosquito bites. Limit outside activities at dusk and dawn when mosquitoes are most active.



STAY OFF THE ICE!

Lake Michigan looks a lot like the Arctic when it freezes during the winter. But unlike the arctic landscape, the lake ice is full of hidden thin spots and gaps, often concealed by snow. If you fall through a hidden hole or weak spot, it is likely that you will disappear from view, making rescue nearly impossible. Stay safe and keep off the ice.

VOLUNTEER

Want to help keep our beaches and trails clean? Stop by the Visitor Center and try our Trash Trekkers Volunteering program. Participants will be given a trash bag and a free Indiana Dunes water bottle for their efforts.



Be sure to share your beach cleanup using our hashtags!
#npsvolunteer #trashtrekkers



Indiana Dunes Tourism

1215 N. State Rd. 49, Porter, IN 46304

219-926-2255

indianadunes.com



Spring House Inn

303 N. Mineral Springs Rd.
Porter, IN 46304
219-929-4600
springhouseinn.com

"Very comfortable to stay here. Nice inn and nice restaurant next door. Very highly recommended friendly staff very nice location nice rooms."

Everett, U.S., Booking.com, Feb. 2022 ★★★★★

"I love this place...it has beautiful nature views from the rooms. Close to the national park."

Wilson, U.S., Booking.com, Jan. 2022 ★★★★★



"A quiet inn that puts you close to natural attractions. The facility was very clean, quiet, and the rooms were large. There is a lovely space to sit and visit and keep your distance. We wanted to visit the Dunes National Park so this location was excellent. Good breakfast."

Denowlin, U.S., Booking.com, Jan. 2022 ★★★★★

