

AECOM



**PORT
EVERGLADES**
BROWARD COUNTY • FLORIDA

2023 Port Everglades Master/Vision Plan Update

Tenants/Stakeholders Meeting

October 18, 2023

Meeting Agenda

1. Opening Remarks
2. County and Consultant Team Introductions
3. Background
4. Port Everglades Updates
5. Master/Vision Plan Strategy and Direction
6. Project Approach
7. Schedule
8. Next Steps
9. Comments and Questions

1

Opening Remarks

Jonathan Daniels
Chief Executive Officer and Port Director
Port Everglades

AECOM

BA
Bermello Ajamil & Partners

HBC Engineering
Company

THE **Chappell**
GROUP

 **CORDOVA
RODRIGUEZ**
& ASSOCIATES, INC.

 **Dickey
Consulting**
Public Relations - Project Management - Strategic Planning - Economic Development
"Sustaining Communities"

HDR

 **MARTIN**
ASSOCIATES

- Original Port Everglades Master/Vision Plan was approved by the Broward County Commission in December 2008
- The County Commission has directed that the Port Everglades Master/Vision Plan be updated every 2-3 years
 - **First update:** Approved March 2011
 - **Second update:** Approved June 2014
 - **Third update:** Approved June 2020
 - **Fourth update:** *Anticipated Q1 2025 (1-year, Comprehensive Plan)*
- Most recent Master/Vision Plan recommended 50 projects for funding between the 5-, 10-, and 20-year time frames, with four guiding principles used to aid in selection:
 - Capacity
 - Efficiency
 - Flexibility
 - Integration

4 Port Everglades Updates

Port Mission

Port Everglades works creatively and competitively to expand the revenue positions of our trade, cruise, and energy customers which in turn creates economic, social, and environmental value for our community.

Port Vision

Port Everglades is prosperous and sustainable due to innovative multimodal trade and travel partnerships, strategic business diversifications, and focused investments fueling vigorous growth.

4

Port Everglades Updates: Master/Vision Plan Projects

**Southport
Turning Notch
Extension**
(99% Complete)

**3 Super Post-
Panamax STS
Cranes at Berth
30 (Southport
Turning Notch)**
(Arriving
December 2023)

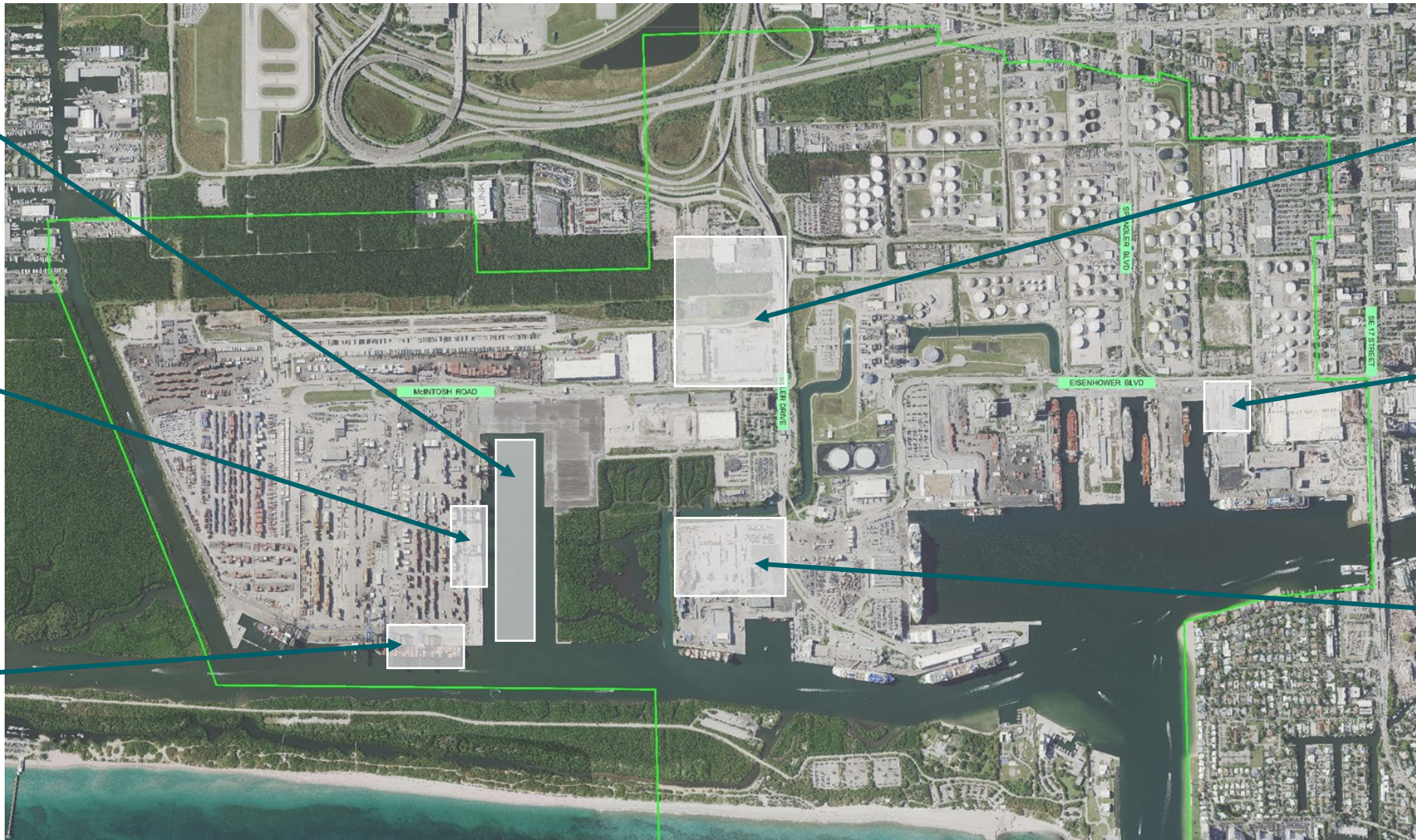
**3 Super Post-
Panamax STS
Cranes at Berth
31**
(Completed 2021)

I-595 Flyover
(Currently doing
feasibility analysis
with FDOT)

**Cruise Terminal
2/4 Parking
Garage**
(Completed 2020)

New Ro-Ro Yard
(Complete)

*Other projects from
2018 Plan have been
postponed by COVID



Master/Vision Plan Strategy and Direction

Master/Vision Plan Update will explore key drivers:

- Maintaining agility/flexibility to respond to unforeseen circumstances
- Electrification/decarbonization
- Diversification
- Resiliency/sea level rise
- Managing growth and traffic impacts (transportation infrastructure and efficient goods/people movement)
- Maximizing use of existing space for economic development
- Optimizing security gates/checkpoints
- Densification/consolidation of cargo operations
- Warehousing/crossdocking
- Beautification

Master/Vision Plan Strategy and Direction



5 Key Theme: Agility/Flexibility

Key Theme: Agility/Flexibility

Plan structured to be nimble and adaptable to changing circumstances

Port positioned to absorb unforeseen local, regional, national, and global shocks

Plan supports and enhances existing Port operations and plans for growth



Key Theme: Electrification/Decarbonization

Key Theme: Electrification/Decarbonization

Plan builds on strategy for shore power infrastructure

Plan considers repurposing of fuel infrastructure in emerging alternative fuels landscape

Plan assesses impacts of global fuel trends on Port demand and competitiveness



5 Key Theme: Diversification

Key Theme: Diversification

Plan supports Port's goal of remaining most diverse port in the US

Plan considers impacts of changing Port infrastructure on diverse tenant mix

Plan explores further diversification in Port's fuel and passenger businesses



Key Theme: Resiliency

Plan proposes strategies and projects to increase Port's resilience to extreme weather

Plan accounts for rising sea levels and long-term impacts to Port infrastructure

Plan leverages Port's diversity of uses as a tool for economic resilience in a changing world



Key Theme: Managing Growth/Traffic

Plan assesses impacts of off-Port projects on future Port traffic

Plan devises strategies for reducing delays and queuing at key entry points

Plan outlines investments in new infrastructure to manage Port growth and resulting traffic



Key Theme: Maximizing Existing Space for Economic Development

Key Theme: Maximizing Existing Space for Economic Development

Plan identifies strategies for using Port assets to increase tourism revenues

Plan devises economic development strategy to complement convention center

Plan leverages increased connectivity provided by people mover to grow bottom line



Key Theme: Optimizing Security Gates/Checkpoints

Key Theme: Optimizing Security

Plan incorporates best practices for security and access management

Plan proposes physical and programmatic improvements to existing gate system

Plan considers new security needs with growing convention traffic and new light rail



Key Theme: Densification/Consolidation of Cargo Operations

Key Theme: Densification/ Consolidation of Cargo Operations

Plan explores densification and common user terminals in Southport

Plan considers impact of consolidated maintenance building on Port operations

Plan seeks ways to optimize cargo movements to increase Port efficiency



Key Theme: Warehousing/ Crossdocking

Plan explores potential for new warehousing operations outside the Port

Plan devises strategies and locations for crossdocking to improve Port efficiency

Plan outlines roles of Port and other private stakeholders in warehousing/crossdocking



5 Key Theme: Beautification

Key Theme: Beautification

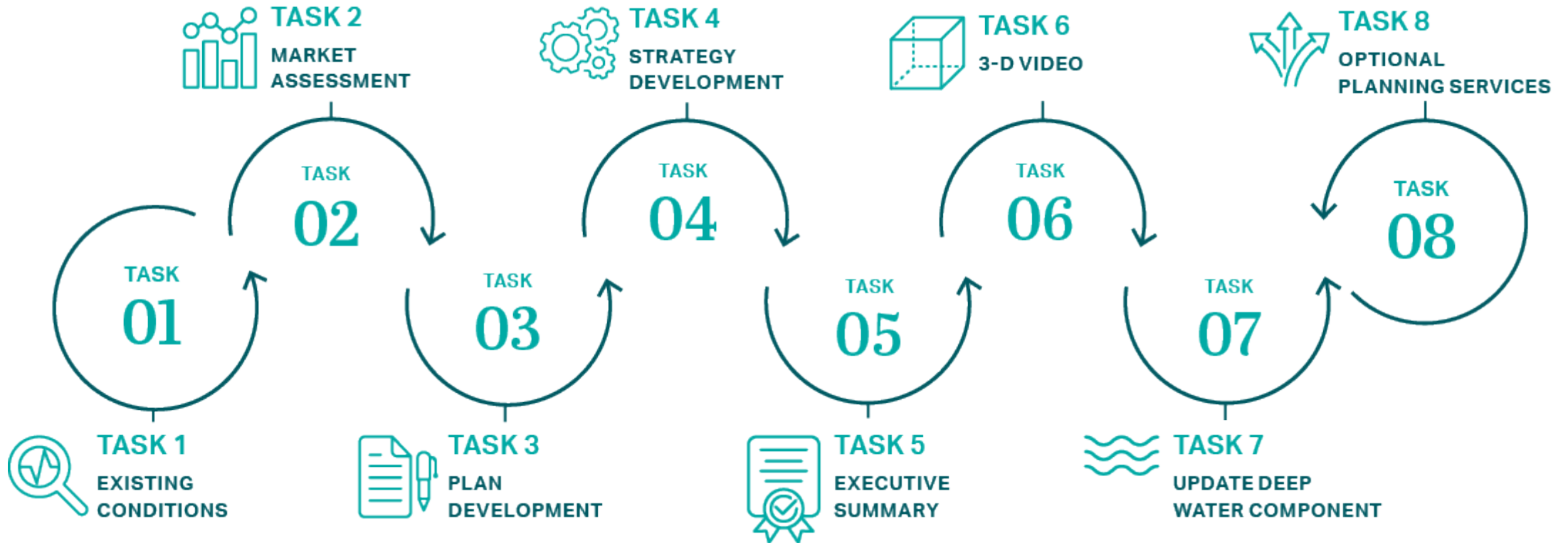
Plan proposes enhancements to Port aesthetics to support future luxury cruise business

Plan considers Port character in the context of expanded convention traffic

Plan devises strategies to improve customer perception for existing cruise business



Proven Approach to Delivering the Master/Vision Plan



The project team's port planning process is collaborative and iterative and will **leverage your expertise as key stakeholders**. Various components to be considered include:

- **Market Study and Assessment:** Types of cargo and cruise traffic at Port Everglades
- **Shipping:** Forecast of types and sizes of ships, channel restrictions, new trade lanes, and regional/global trends
- **Economics:** The advantage of Port Everglades over competing ports, capture of cargo and cruise business, types/sizes of ships for each trade type, and commodity forecast for each trade type
- **Infrastructure:** Approach channels/turning areas, harbor layout and dredging limitations including configuration of berths, storage yards, configuration of cruise terminals, movement of people and cargo in and out of the port and terminals, maintenance of facilities, gate layouts and queue management, utility services, and inland transport links
- **Operations:** Cargo/cruise handling systems and equipment, storage facilities and methods, dwell times, gate procedures, operating systems, EDI, and security systems
- **Technical:** Design of channels, wharves, reclamation, laydown areas, cruise terminal passenger flows and container yard pavements
- **Environmental:** Impact on environment and morphology, wetlands impact mitigation, new/renewal of permits, and sustainability
- **Institutional and Managerial:** Extent of private participation, policy reforms and incentives

6

Project Approach – Key Goals

- ✓ Build upon past Master/Vision Plan efforts in light of new trends, uncertainties, and technologies
- ✓ Effectively engage all stakeholders to set future strategic direction
- ✓ Maintain a plan development process that is flexible, adaptable, and responsive
- ✓ Strive for a final Master/Vision Plan that is both aspirational and realistic

Project Schedule

	Q3 2023			Q4 2023			Q1 2024			Q2 2024			Q3 2024			Q4 2024			Q1 2025		
Task	J	A	S	O	N	D	J	F	M	A	M	J	J	A	S	O	N	D	J	F	M
Task 1: Existing Conditions Assessment																					
Task 2: Market Assessment																					
Task 3: Plan Development and Final Plan																					
Task 4: Impacts & Strategies for Implementation																					
Task 5: Executive Summary																					
Task 6: 3-D Computer Animated Video																					
Task 7: Broward County Comprehensive Plan Update																					
Task 8: Optional Services																					
Tenant/Stakeholder Meetings				X																	

8 Next Steps: Project Tasks

Task 1 (September – December 2023): Existing Conditions Assessment

- Subtasks include analysis of:
 - Regional and local planning context
 - Port land ownership and uses
 - Port facilities
 - Progress on 5-year projects in 2018 Update
 - Cargo berth and yard capacity
 - On-Port traffic and parking
 - Intermodal transportation network
 - Environmental conditions
- Outreach to Port leadership, tenants, environmental community, and other key stakeholders

Task 2 (September 2023 – January 2024): Market Assessment

- Subtasks include analysis of:
 - Historical cruise, liquid bulk, and cargo activity
 - Market assessments and forecasts for cruise, liquid bulk, containerized cargo, and non-containerized cargo
 - Foreign Trade Zone trends
 - LNG bunkering assessment
 - Supply chain disruptions/trends
 - Cold storage and alternative energy needs
 - Port beautification
 - Assessment of other uses in Port area, including day care, hotel, restaurant
 - Port Everglades fire station assessment
- Outreach to County administration, Port tenants, Port Everglades Action Team, and other key stakeholders

8

Next Steps: Project Communications

Do you know of possible opportunities for Port Everglades that should be investigated as a part of the Master/Vision Plan? We look forward to your input throughout the planning process.

Project Contacts:

Dr. Natacha J. Yacinthe – Port Everglades Project Manager

nyacinthe@broward.org

954.468.0213

Karl Romesburg – AECOM Deputy Project Manager

karl.romesburg@aecom.com

305.975.4629

Port Everglades Project Email

portmasterplan@broward.org

Text an idea to:

954.459.0183

Comments and Questions