



WORLD CITY

ustradenumbers.com



2026 PORT EVERGLADES

TRADE NUMBERS



PORT EVERGLADES'
\$27.18 billion in
two-way trade with
the world



Sponsored
by:



**PORT
EVERGLADES**
BROWARD COUNTY • FLORIDA

Top 50 Port Everglades Trade Partners

1-YEAR CHANGE	2025 RANK	COUNTRY	TOTAL TRADE 2025	CHANGE	TOTAL EXPORTS 2025	CHANGE	TOTAL IMPORTS 2025	CHANGE	SURPLUS/(DEFICIT) 2025
		World Total	\$27,180,495,358	-2.27%	\$14,884,359,656	2.61%	\$12,296,135,702	-7.59%	\$2,588,223,954
0	1	Dominican Republic	\$2,773,590,251	-5.65%	\$1,469,836,469	-4.23%	\$1,303,753,782	-7.21%	\$166,082,687
0	2	Brazil	\$1,890,915,130	-9.31%	\$1,345,809,178	-6.67%	\$545,105,952	-15.24%	\$800,703,226
0	3	Costa Rica	\$1,875,072,237	3.94%	\$1,194,977,431	1.03%	\$680,094,806	9.49%	\$514,882,625
0	4	Honduras	\$1,777,777,471	3.92%	\$775,176,488	12.67%	\$1,002,600,983	-1.97%	(\$227,424,495)
2	5	Chile	\$1,687,674,777	22.45%	\$1,096,948,705	24.59%	\$590,726,072	18.66%	\$506,222,633
0	6	Guatemala	\$1,531,123,478	1.43%	\$768,314,940	5.00%	\$762,808,538	-1.93%	\$5,506,402
-2	7	Colombia	\$1,443,850,366	-8.27%	\$607,103,129	-5.86%	\$836,747,237	-9.94%	(\$229,644,108)
1	8	Bahamas	\$1,179,015,973	20.41%	\$704,526,826	17.01%	\$474,489,147	25.85%	\$230,037,679
-1	9	Nicaragua	\$1,113,850,234	7.30%	\$243,196,286	7.01%	\$870,653,948	7.38%	(\$627,457,662)
3	10	El Salvador	\$772,629,929	12.22%	\$371,927,178	7.57%	\$400,702,751	16.90%	(\$28,775,573)
0	11	Argentina	\$735,895,022	-5.13%	\$571,560,201	-6.96%	\$164,334,821	1.88%	\$407,225,380
0	12	Panama	\$622,062,802	-13.95%	\$601,198,530	-10.73%	\$20,864,272	-57.82%	\$580,334,258
-3	13	Venezuela	\$596,129,178	-28.45%	\$522,244,150	-31.57%	\$73,885,028	5.56%	\$448,359,122
6	14	Italy	\$543,242,771	45.01%	\$50,650,594	45.55%	\$492,592,177	44.96%	(\$441,941,583)
2	15	Peru	\$437,773,199	12.69%	\$262,196,327	42.64%	\$175,576,872	-14.22%	\$86,619,455
-1	16	Trinidad and Tobago	\$422,753,246	7.17%	\$381,858,428	4.94%	\$40,894,818	33.66%	\$340,963,610
1	17	Mexico	\$404,812,392	5.23%	\$211,692,272	-2.82%	\$193,120,120	15.74%	\$18,572,152
-2	18	Cayman Islands	\$387,448,483	-1.29%	\$383,963,516	-1.20%	\$3,484,967	-9.67%	\$380,478,549
4	19	Aruba	\$366,127,884	3.63%	\$364,080,113	3.58%	\$2,047,771	12.54%	\$362,032,342
4	20	Haiti	\$364,214,889	6.64%	\$152,438,060	39.13%	\$211,776,829	-8.71%	(\$59,338,769)
4	21	Turkey	\$330,531,384	0.83%	\$33,657,233	1.27%	\$296,874,151	0.78%	(\$263,216,918)
11	22	Cuba	\$327,555,653	51.74%	\$323,548,253	49.88%	\$4,007,400	N/A	\$319,540,853
4	23	Ecuador	\$321,601,726	19.31%	\$108,294,513	13.42%	\$213,307,213	22.54%	(\$105,012,700)
-5	24	France	\$277,997,070	-26.00%	\$10,787,175	154.58%	\$267,209,895	-28.06%	(\$256,422,720)
5	25	Belize	\$277,743,180	8.89%	\$261,084,046	11.45%	\$16,659,134	-20.00%	\$244,424,912
0	26	China	\$272,464,038	-1.97%	\$115,709	-94.25%	\$272,348,329	-1.29%	(\$272,232,620)
-13	27	India	\$261,253,946	-55.08%	\$8,560,466	408.24%	\$252,693,480	-56.42%	(\$244,133,014)
4	28	Paraguay	\$228,447,242	5.13%	\$221,210,304	4.44%	\$7,236,938	31.81%	\$213,973,366
10	29	Spain	\$219,665,005	61.68%	\$26,412,042	-8.28%	\$193,252,963	80.49%	(\$166,840,921)
4	30	Jamaica	\$218,980,712	3.04%	\$206,235,219	4.99%	\$12,745,493	-20.73%	\$193,489,726
4	31	Curacao	\$217,581,242	13.06%	\$214,479,549	12.27%	\$3,101,693	119.91%	\$211,377,856
-1	32	Uruguay	\$195,687,552	-13.74%	\$163,355,905	-22.05%	\$32,331,647	87.01%	\$131,024,258
5	33	Australia	\$190,550,622	32.80%	\$32,201,045	20.16%	\$158,349,577	35.71%	(\$126,148,532)
-13	34	The Netherlands	\$180,991,592	-51.34%	\$64,586,775	-20.70%	\$116,404,817	-59.93%	(\$51,818,042)
-7	35	Germany	\$167,132,637	-37.16%	\$6,534,275	565.01%	\$160,598,362	-39.40%	(\$154,064,087)
-14	36	United Kingdom	\$155,549,675	-56.53%	\$2,716,679	-12.14%	\$152,832,996	-56.91%	(\$150,116,317)
3	37	Barbados	\$135,260,404	6.13%	\$135,209,475	6.28%	\$50,929	-77.94%	\$135,158,546
-2	38	Switzerland	\$129,100,107	-27.43%	\$307,656	81.44%	\$128,792,451	-27.53%	(\$128,484,795)
-2	39	Turks and Caicos Islands	\$128,527,855	-14.75%	\$127,609,071	-15.26%	\$918,784	399.33%	\$126,690,287
2	40	Guyana	\$117,076,489	7.27%	\$110,491,689	9.19%	\$6,584,800	-17.22%	\$103,906,889
0	41	Saint Maarten	\$110,637,647	-6.06%	\$109,326,374	-6.34%	\$1,311,273	24.82%	\$108,015,101
6	42	Suriname	\$96,926,047	33.69%	\$91,060,355	37.24%	\$5,865,692	-4.60%	\$85,194,663
0	43	United Arab Emirates	\$86,104,622	-20.80%	\$7,879,847	241.23%	\$78,224,775	-26.49%	(\$70,344,928)
5	44	Antigua and Barbuda	\$84,997,666	18.69%	\$83,306,019	18.93%	\$1,691,647	7.73%	\$81,614,372
-16	45	Taiwan	\$84,837,973	-67.15%	\$741,741	-28.71%	\$84,096,232	-67.31%	(\$83,354,491)
-2	46	South Africa	\$71,183,743	-33.09%	\$270,295	38.93%	\$70,913,448	-33.22%	(\$70,643,153)
4	47	Bolivia	\$69,244,088	26.04%	\$57,451,856	20.22%	\$11,792,232	64.93%	\$45,659,624
2	48	St Lucia	\$68,165,034	9.56%	\$67,138,996	10.72%	\$1,026,038	-34.94%	\$66,112,958
5	49	Vietnam	\$67,410,819	28.88%	\$114,992	204.73%	\$67,295,827	28.75%	(\$67,180,835)
-3	50	Poland	\$60,219,058	-25.49%	\$416,187	166.74%	\$59,802,871	-25.86%	(\$59,386,684)

Source: WorldCity analysis of U.S. Census Bureau data

Top 20 Port Everglades Export Commodities

1-YEAR CHANGE	2025 RANK	COMMODITY	2025	1-YEAR CHANGE	2-YEAR CHANGE
		Total, all exports	\$14,884,359,656	2.61%	0.48%
0	1	Passenger vehicles	\$1,074,502,819	8.37%	10.57%
1	2	Motor vehicle parts	\$476,668,200	21.74%	24.39%
-1	3	Motorboats and yachts	\$420,996,208	-1.91%	-35.30%
2	4	Perfumes	\$332,523,834	0.05%	-3.28%
0	5	Computers	\$294,701,222	-13.13%	-30.17%
-2	6	Printers, all types, parts	\$288,247,180	-16.34%	-20.66%
2	7	Prepared foods, beverages	\$261,968,941	14.20%	27.52%
-1	8	Medical instruments	\$227,411,708	-5.97%	-9.35%
3	9	Cotton yarn	\$206,385,486	19.43%	-20.11%
6	10	Frozen beef	\$199,963,980	42.29%	51.44%
-1	11	Pumps for dispensing liquids	\$195,726,920	3.74%	-1.27%
-1	12	Catalytic converters, air, oil filters	\$191,317,606	8.95%	3.78%
-5	13	Cell phones, related equipment	\$186,890,259	-20.16%	-25.22%
-1	14	Chicken and other poultry	\$182,801,514	7.85%	20.28%
-1	15	Parts for heavy machinery	\$173,886,317	12.54%	-0.22%
1	16	Electrical supplies <1000V	\$157,788,329	13.14%	18.29%
-2	17	Gasoline, other fuels	\$153,173,266	2.91%	5.22%
0	18	Cheese and curd	\$142,689,716	6.71%	22.56%
0	19	Taps, valves for pipes	\$136,160,698	2.75%	11.83%
1	20	Make-up and skin-care products	\$129,575,080	5.29%	-3.14%

Source: WorldCity analysis of U.S. Census Bureau data

Top 20 Port Everglades Import Commodities

1-YEAR CHANGE	2025 RANK	COMMODITY	2025	1-YEAR CHANGE	2-YEAR CHANGE
		Total, all imports	\$12,296,135,702	-7.59%	-3.52%
0	1	Medical instruments	\$855,910,078	5.85%	24.50%
2	2	Sweaters, pullovers, vests, knit or crochet	\$648,490,827	-5.25%	-16.47%
0	3	T-shirts, tank tops, knit or crochet	\$635,159,863	-14.24%	-11.13%
2	4	Returned exports, without change	\$503,793,479	22.38%	0.08%
4	5	Fish fillets, chilled or frozen	\$375,070,529	22.80%	6.68%
-4	6	Motorboats and yachts	\$365,024,911	-51.88%	-50.99%
0	7	Misc. aluminum non-prefab structures	\$341,781,720	-5.42%	-4.73%
-3	8	Gasoline, other fuels	\$331,907,399	-50.86%	-65.59%
2	9	Cigars, cigarettes	\$291,577,618	-2.18%	22.41%
0	10	Perfumes	\$240,788,248	-19.92%	26.04%
22	11	Insulated wire, cable	\$213,724,204	171.34%	170.59%
5	12	Granite, marble, other stones	\$172,142,361	11.84%	11.04%
6	13	Bananas and plantains	\$170,548,661	13.14%	21.01%
-6	14	Whiskey, tequila, other liquors	\$166,919,913	-48.33%	-36.11%
1	15	Men's or boys' shirts, not knit or crochet	\$166,519,365	4.17%	21.43%
-1	16	Shrimp, other crustaceans	\$164,610,115	0.88%	-6.80%
-3	17	Melons and papayas	\$162,761,231	-1.80%	-2.50%
6	18	Wine	\$153,977,242	24.64%	61.17%
6	19	Fruit and vegetable juices, not fortified	\$151,325,578	25.73%	67.31%
-7	20	Coffee	\$150,503,895	-14.28%	-28.02%

Source: WorldCity analysis of U.S. Census Bureau data

2025

PORT EVERGLADES' TOP 25 TRADE PARTNERS

For monthly updates, visit ustradenumbers.com/port/port-everglades

PORT EVERGLADES SUMMARY

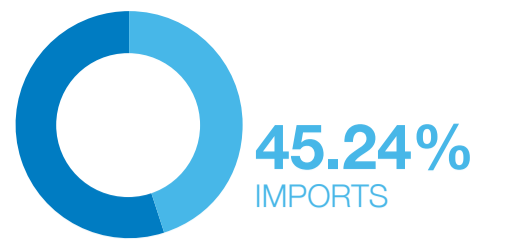
TOTAL TRADE IN BILLIONS
\$27.18
-2.27% ▼

EXPORTS IN BILLIONS
\$14.88
2.61% ▲

IMPORTS IN BILLIONS
\$12.30
-7.59% ▼

SURPLUS IN BILLIONS
\$2.59

TRADE BALANCE
54.76%
EXPORTS



TOP 25 COUNTRIES

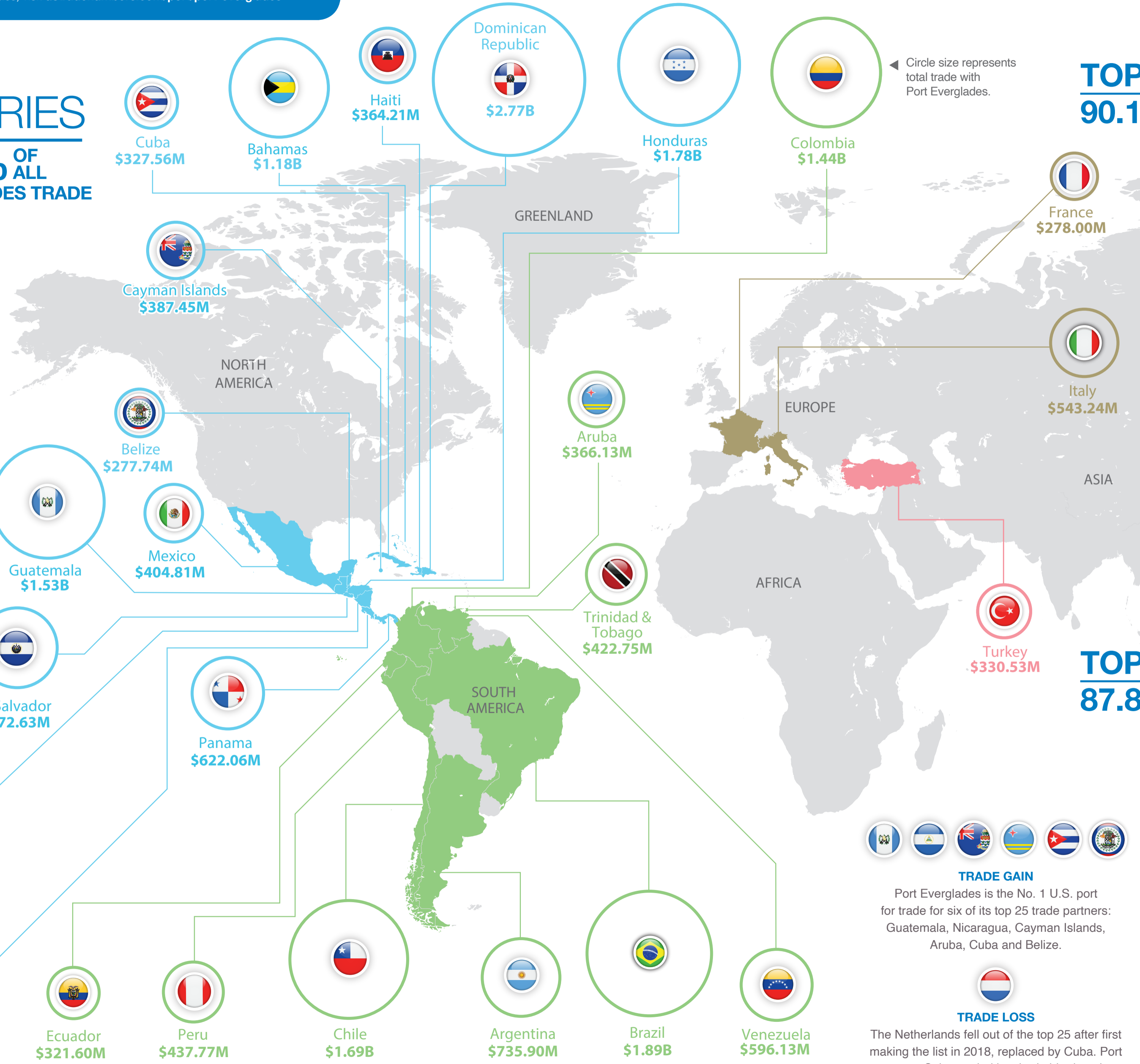
82.64% OF ALL PORT EVERGLADES TRADE

KEY

- ▲ Ranking increased 2024 to 2025
- ▼ Ranking decreased 2024 to 2025

Rank change

0	01.	Dominican Republic
0	02.	Brazil
0	03.	Costa Rica
0	04.	Honduras
2 ▲	05.	Chile
0	06.	Guatemala
-2 ▼	07.	Colombia
1 ▲	08.	Bahamas
-1 ▼	09.	Nicaragua
3 ▲	10.	El Salvador
0	11.	Argentina
0	12.	Panama
-3 ▼	13.	Venezuela
6 ▲	14.	Italy
2 ▲	15.	Peru
-1 ▼	16.	Trinidad and Tobago
1 ▲	17.	Mexico
-2 ▼	18.	Cayman Islands
4 ▲	19.	Aruba
4 ▲	20.	Haiti
4 ▲	21.	Turkey
11 ▲	22.	Cuba
4 ▲	23.	Ecuador
-5 ▼	24.	France
5 ▲	25.	Belize



TOP 25 EXPORT PARTNERS

90.15% OF ALL PORT EVERGLADES EXPORTS

0	01.	Dominican Republic
0	02.	Brazil
0	03.	Costa Rica
0	04.	Chile
2 ▲	05.	Honduras
0	06.	Guatemala
4 ▲	07.	Bahamas
1 ▲	08.	Colombia
-1 ▼	09.	Panama
0	10.	Argentina
-6 ▼	11.	Venezuela
0	12.	Cayman Islands
0	13.	Trinidad and Tobago
1 ▲	14.	El Salvador
-1 ▼	15.	Aruba
3 ▲	16.	Cuba
7 ▲	17.	Peru
-2 ▼	18.	Belize
-2 ▼	19.	Nicaragua
0	20.	Paraguay
2 ▲	21.	Curacao
-4 ▼	22.	Mexico
-1 ▼	23.	Jamaica
-3 ▼	24.	Uruguay
3 ▲	25.	Haiti

TOP 25 IMPORT PARTNERS

87.84% OF ALL PORT EVERGLADES IMPORTS

0	01.	Dominican Republic
0	02.	Honduras
1 ▲	03.	Nicaragua
-1 ▼	04.	Colombia
0	05.	Guatemala
1 ▲	06.	Costa Rica
2 ▲	07.	Chile
-2 ▼	08.	Brazil
5 ▲	09.	Italy
0	10.	Bahamas
2 ▲	11.	El Salvador
3 ▲	12.	Turkey
4 ▲	13.	China
-3 ▼	14.	France
-7 ▼	15.	India
7 ▲	16.	Ecuador
3 ▲	17.	Haiti
9 ▲	18.	Spain
5 ▲	19.	Mexico
1 ▲	20.	Peru
4 ▲	21.	Argentina
-4 ▼	22.	Germany
3 ▲	23.	Australia
-12 ▼	24.	United Kingdom
-3 ▼	25.	Switzerland



TRADE GAIN

Port Everglades is the No. 1 U.S. port for trade for six of its top 25 trade partners: Guatemala, Nicaragua, Cayman Islands, Aruba, Cuba and Belize.



TRADE LOSS

The Netherlands fell out of the top 25 after first making the list in 2018, replaced by Cuba. Port exports to Cuba are led by charitable donations.

2025 PORT EVERGLADES PACE OF CHANGE

For monthly updates, visit ustradenumbers.com/port/port-everglades

SUMMARY

TOTAL TRADE IN BILLIONS
\$27.18
-2.27% ▼

EXPORTS IN BILLIONS
\$14.88
2.61% ▲

IMPORTS IN BILLIONS
\$12.30
-7.59% ▼

SURPLUS IN BILLIONS
\$2.59

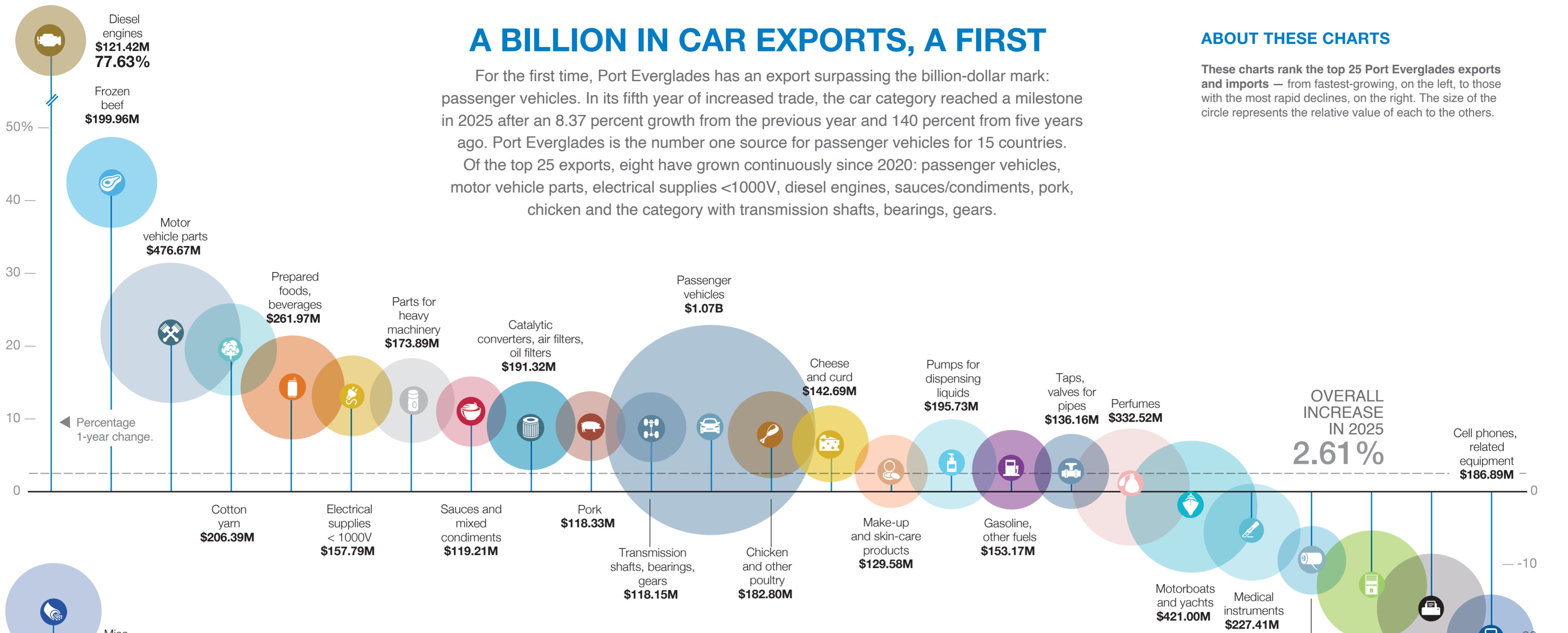
54.76% TRADE BALANCE **45.24%**

A BILLION IN CAR EXPORTS, A FIRST

For the first time, Port Everglades has an export surpassing the billion-dollar mark: passenger vehicles. In its fifth year of increased trade, the car category reached a milestone in 2025 after an 8.37 percent growth from the previous year and 140 percent from five years ago. Port Everglades is the number one source for passenger vehicles for 15 countries. Of the top 25 exports, eight have grown continuously since 2020: passenger vehicles, motor vehicle parts, electrical supplies <1000V, diesel engines, sauces/condiments, pork, chicken and the category with transmission shafts, bearings, gears.

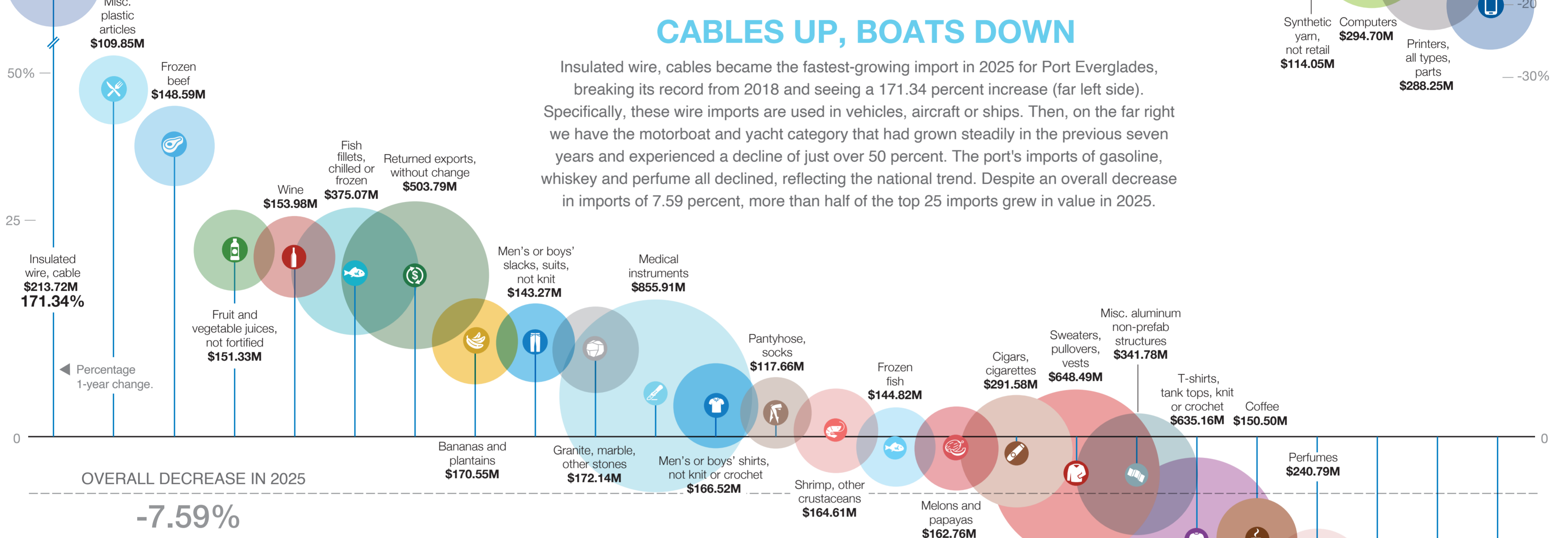
ABOUT THESE CHARTS

These charts rank the top 25 Port Everglades exports and imports — from fastest-growing, on the left, to those with the most rapid declines, on the right. The size of the circle represents the relative value of each to the others.



CABLES UP, BOATS DOWN

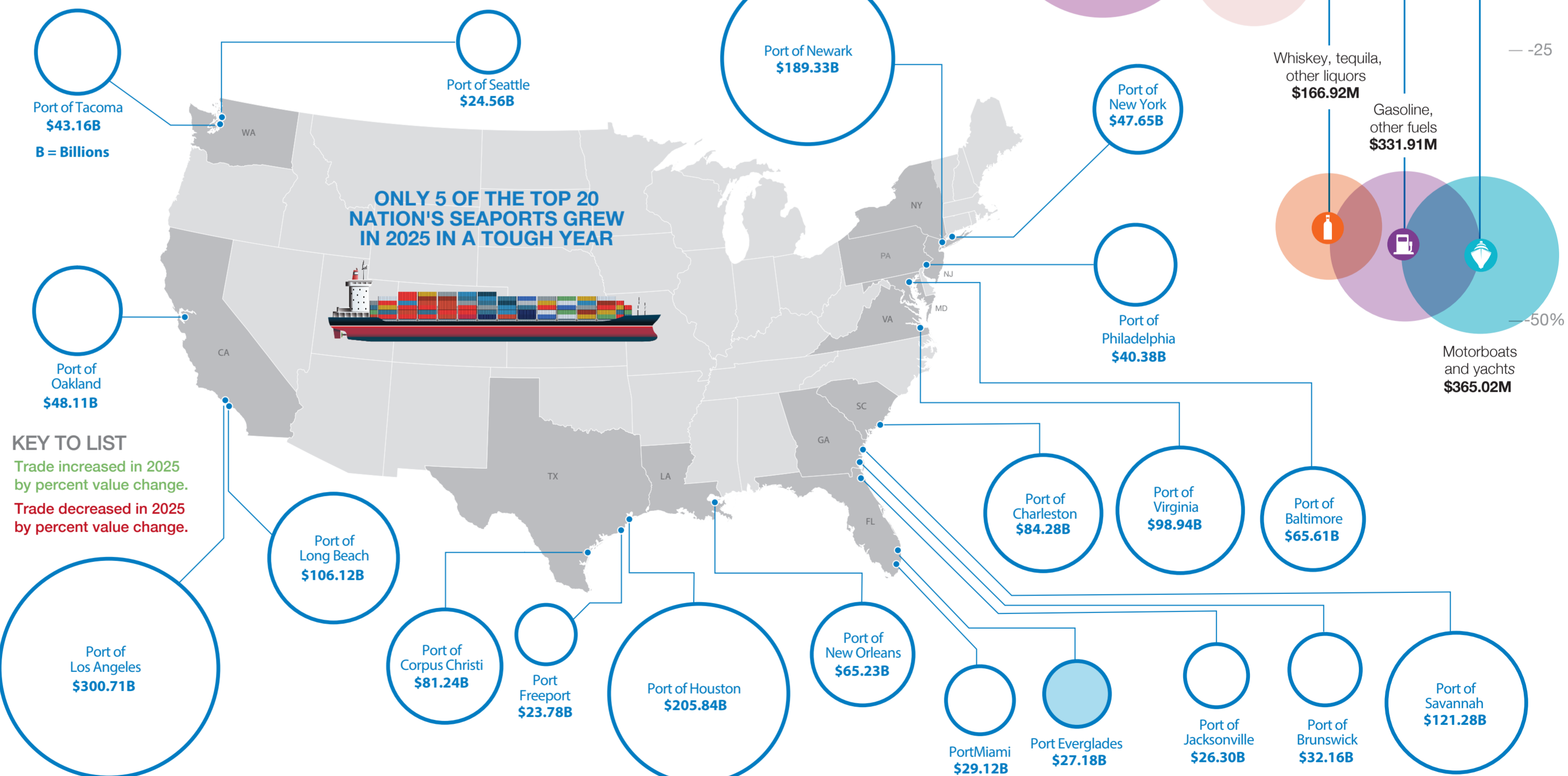
Insulated wire, cables became the fastest-growing import in 2025 for Port Everglades, breaking its record from 2018 and seeing a 171.34 percent increase (far left side). Specifically, these wire imports are used in vehicles, aircraft or ships. Then, on the far right we have the motorboat and yacht category that had grown steadily in the previous seven years and experienced a decline of just over 50 percent. The port's imports of gasoline, whiskey and perfume all declined, reflecting the national trend. Despite an overall decrease in imports of 7.59 percent, more than half of the top 25 imports grew in value in 2025.



TOP 20 SEAPORTS 29.69% OF ALL U.S. TRADE

KEY
▲ Ranking increased 2024 to 2025
▼ Ranking decreased 2024 to 2025

1-Yr Change	Overall Rank	Rank	Seaport
-2	04.	01.	Port of Los Angeles
0	05.	02.	Port of Houston
0	06.	03.	Port of Newark
-1	11.	04.	Port of Savannah, GA
-3	14.	05.	Port of Long Beach
-4	16.	06.	Port of Virginia
-6	20.	07.	Port of Charleston
-6	23.	08.	Port of Corpus Christi, TX
1	25.	09.	Port of Baltimore, MD
1	26.	10.	Port of New Orleans
0	28.	11.	Port of Oakland, CA
3	29.	12.	Port of New York
-4	33.	13.	Port of Tacoma, WA
2	34.	14.	Port of Philadelphia
-4	39.	15.	Port of Brunswick, GA
0	41.	16.	PortMiami
-3	45.	17.	Port Everglades
-1	46.	18.	Port of Jacksonville, FL
-2	49.	19.	Port of Seattle, WA
4	50.	20.	Port Freeport, TX



Perfectly Positioned

Experience unparalleled connectivity to global markets with our newly expanded docks and cutting-edge Super Post-Panamax gantry cranes. By investing in future-ready infrastructure today, your business is primed for sustained success tomorrow.

PORT EVERGLADES
BROWARD COUNTY, FLORIDA
PortEverglades.net

We'll take it from here.

our products

WorldCity has been producing TradeNumbers publications since 2001 for airports, seaports and border crossings across the United States. They are published annually in three formats: the Executive Summary format, a full 64-page magazine format, and a handy pocket-sized version. WorldCity also hosts a website, ustradenumbers.com, updated monthly with pages of data for more than 200 countries, more than 1,800 specific export and import commodities, and more than 450 airports, seaports and border crossings. WorldCity licenses its content to airports, seaports and border crossings, updated monthly, including Port Everglades. Data for those ports is also "unlocked" and available to all at ustradenumbers.com.

our people

PRESIDENT: Ken Roberts
MANAGEMENT STAFF: Tatiana Panzardi
DATA & WEBSITE DEVELOPMENT: Pedro Lucas Cámara Rodrigues Lopes
VIDEO PRODUCTION: Hiram Henriquez and Kristian Rodriguez
GRAPHIC DESIGN: Vivian Chavez, Eric Borrazas, Suzette Sullivan, Hiram Henriquez

there's more

DOWNLOAD versions of our publications, including this one, at ustradenumbers.com.

SUBSCRIBE to up to ten years of data for any export, import, country, airport, seaport or border crossing with a subscription to ustradenumbers.com.

ACCESS sponsored pages, which are open to all, including the pages for Port of Los Angeles, Los Angeles International Airport, Miami International Airport, Port Laredo, Pharr, Eagle Pass, Houston Intercontinental Airport, Orlando International Airport, Port Everglades, Dallas Fort-Worth Airport, and Brownsville. For more information about the Content Licensing program or other assistance, contact info@ustradenumbers.com.

WORLD CITY
ustradenumbers.com

nuestros productos

WorldCity ha producido productos TradeNumbers para aeropuertos, puertos marítimos y cruces fronterizos. Se publican anualmente en tres formatos: formato de Resumen ejecutivo, un formato de revista de 64 páginas, y tamaño folleto. En ustradenumbers.com, la compañía actualiza mensualmente más de 10 millones de puntos de datos para más de 450 aeropuertos, puertos marítimos y cruces fronterizos; para más de 200 países; y por más de 1,800 exportaciones e importaciones. WorldCity también provee licencia de contenido digital a aeropuertos, puertos marítimos y cruces fronterizos, actualizado mensualmente. Los datos de estos puertos "con acceso libre" están disponibles para todos en ustradenumbers.com.



**KEEPING YOU ABOVE
THE COMPETITION**

**CHOICE OF
TERMINALS**

**INDUSTRY-LEADING
CRANE RELIABILITY**

**QUICK TRUCK
PROCESSING**

**VIRTUALLY ZERO
SHIP WAIT TIME**

**SHORT SHIPPING
CHANNEL**

**PROXIMITY TO CARIBBEAN/
SOUTH AMERICA**

**SUPERB INTERMODAL
CONNECTIONS**

Perfectly Positioned

Ranked in the top 20% of ports worldwide for operational efficiency, according to World Bank's latest *Container Port Performance Index*, Port Everglades offers you unrivaled access to your markets through direct highways, rail and a short entrance channel. Here, you'll enjoy complete multi-modal connections, fast and efficient operations, quick truck turnarounds and superior crane uptime. Port Everglades puts you on the path to profits.

We'll take it from here.



PortEverglades.net