

PORTSMOUTH

THE GREAT WATERFRONT CITY





PORTSMOUTH THE GREAT WATERFRONT CITY

Portsmouth is ideally situated on England's south coast with excellent transport links by road, rail, sea and air.

London is around a 90 minutes' drive away and the city has a convenient park and ride service just off the M275, plus coach parking within the city. Train journeys from London also start from 90 minutes and regular services also run along the coast east to Chichester and Brighton and west to Bath, Bristol and Cardiff.

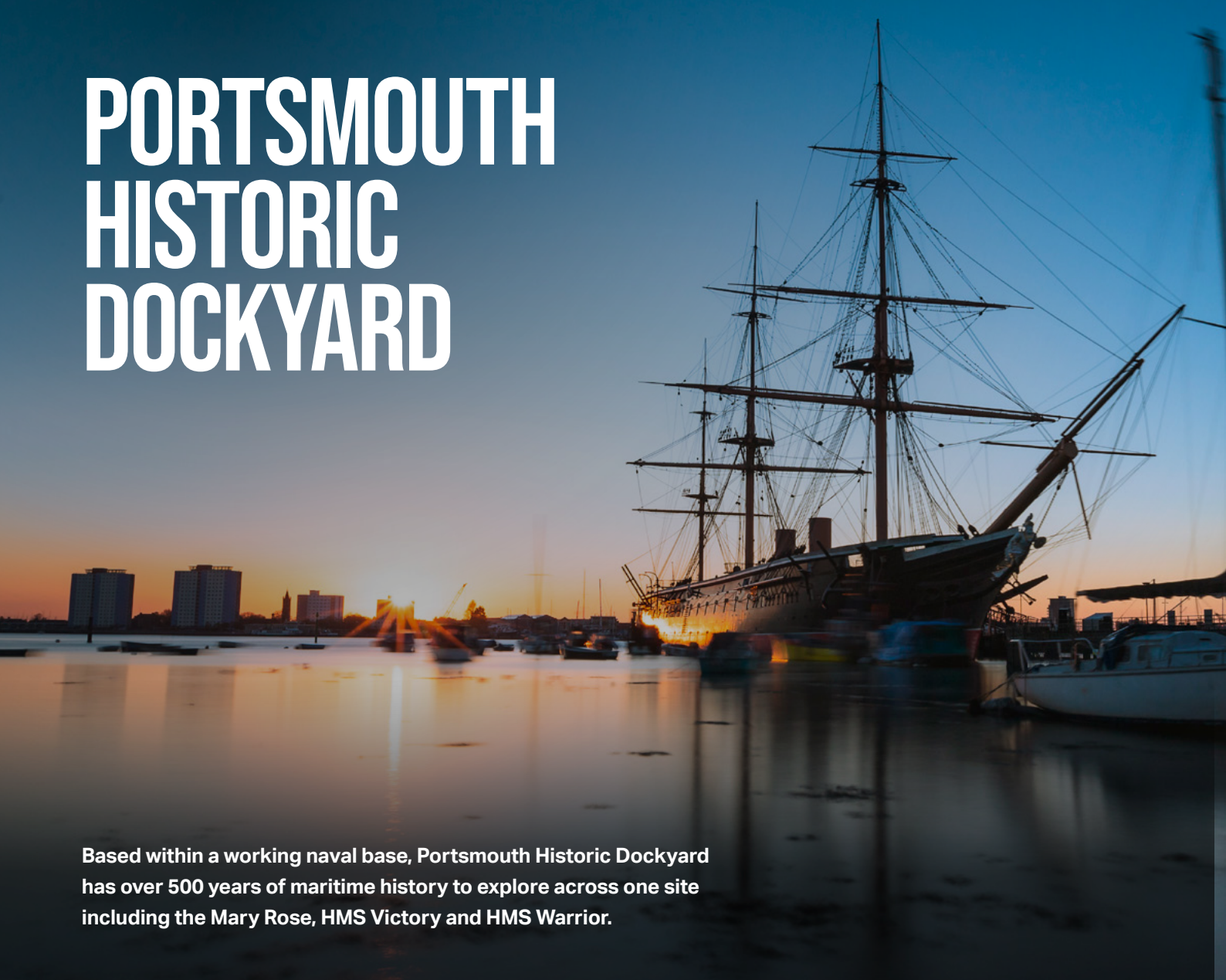
Southampton airport is 22 miles away and both Gatwick and Heathrow airports are around 60 miles from the city.

Portsmouth International Port provides a range of ferry services and has a growing cruise offer. Brittany Ferries operate services to Caen, Cherbourg, Le Havre and St Malo in France plus Santander and Bilbao in Spain. There are also services running to the Channel Islands.

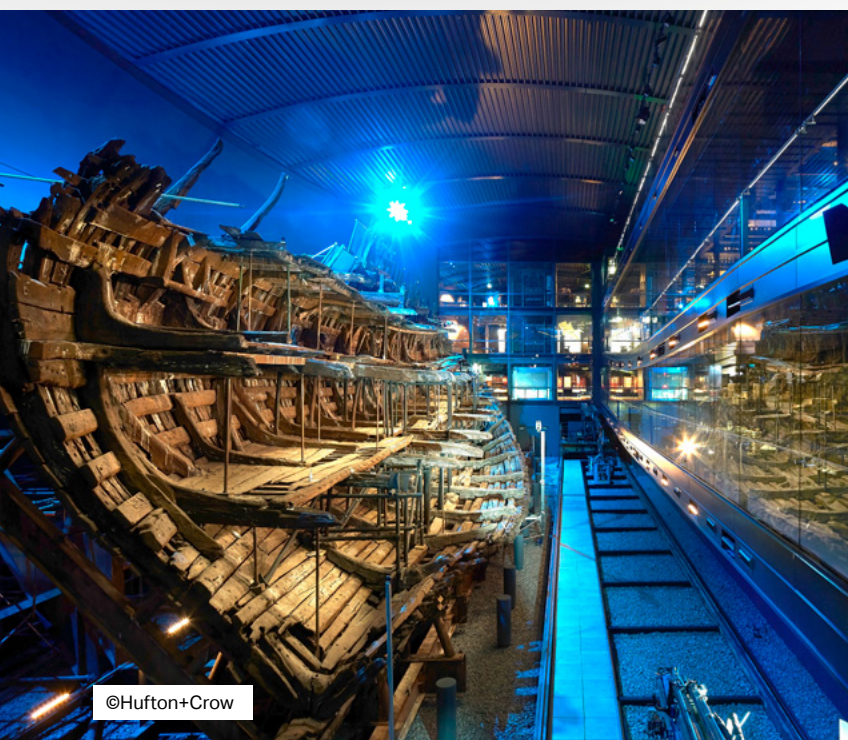
The Port is easily accessible straight off the M275 and has a large on-site multi storey car park and welcoming terminal building which includes a separate area for cruise guests.



PORTSMOUTH HISTORIC DOCKYARD



Based within a working naval base, Portsmouth Historic Dockyard has over 500 years of maritime history to explore across one site including the Mary Rose, HMS Victory and HMS Warrior.



©Hufton+Crow

MARY ROSE

The wreck of Henry VIII's favourite warship, the Mary Rose, was raised from the sea bed in 1982. Following years of preservation works she now sits majestically in a purpose-built museum which houses a large display of Tudor artefacts also recovered from the wreck.

The museum includes a film where visitors can virtually dive into the untold story of the finding, excavation and recovery of The Mary Rose.



HMS VICTORY

Admiral Lord Nelson's flagship, most famous for the Battle of Trafalgar, is open for visitors to climb on-board and explore. The ship is currently undergoing a long period of conservation, and the skilled craftspeople can be viewed carrying out this work during a visit as part of 'Victory Live: The Big Repair.'

HMS WARRIOR

Step on-board HMS Warrior - launched in 1860 she was Britain's first iron-hulled, armoured battleship, the pride of Queen Victoria's fleet and the largest and fastest ship of its time. This innovative ship signalled a significant evolution in the Royal Navy, being powered by steam and marking the first departure from traditional wooden ships.



PORTSMOUTH HISTORIC DOCKYARD ALSO INCLUDES:

- Royal Marines Experience (from summer 2026)
- Royal Navy Museum
- Harbour Tour
- HMS M.33
- Royal Navy Museums: Submarines and Explosion - both based across the harbour in Gosport.

Group bookings and VIP bookable behind-the-scenes experiences available across the site.



GUNWHARF QUAYS

Gunwharf Quays is the UK's premier waterfront shopping and leisure destination.

SHOPPING

Gunwharf Quays boasts over 90 outlet stores, with premium brands including Michael Kors, Oliver Bonas, Hugo Boss, Coach, Kate Spade, L'Occitane and Nike, all offering significant discounts of up to 60% off RRP. With fashion, accessories, homeware, sportswear, gifts, health and beauty and more, there's something for everyone.

DINING

With more than 30 restaurants, bars, and cafés, the dining options are plentiful. From casual eateries to fine dining, guests can enjoy a variety of cuisines. Highlights include Brasserie Blanc for French cuisine, Las Iguanas for Latin flavours, Gigging Squid for tastes of Thailand and The Alchemist for innovative cocktails.

EVENTS AND OFFERS

Gunwharf Quays frequently hosts events and seasonal activities, making each visit unique. The website provides up-to-date information on promotions and special activities, ensuring guests can plan their trip to coincide with exciting and memorable events.



ACCESSIBILITY AND CONVENIENCE

There's ample parking and excellent public transport links, including Portsmouth Harbour train station just a few minutes walk away.

SPINNAKER TOWER

Standing at 170 metres tall, Spinnaker Tower is an icon of Portsmouth's waterfront and a must-visit attraction. From its viewing decks you can enjoy breathtaking 23-mile views across the Solent, the South Downs and the Isle of Wight.

Learn the stories behind the sights, step onto the thrilling glass Sky Walk or enjoy the open-air Sky Garden. Relax with delicious food at the Quayside Café or treat yourself to High Tea at Clouds, which becomes the stylish Sky Bar in the evening.

Group bookings and private hire available.



EXPLORE CENTURIES OF HISTORY



Portsmouth Museum and Art Gallery

OLD PORTSMOUTH

Portsmouth has a rich history - having witnessed great battles, icons of literature, and even a royal wedding.

Old Portsmouth is where you'll find imposing fortifications, built to protect Britain from invasion. Hotwalls Studios, within the historic arches, are occupied by a range of artists who offer regular bookable art experiences.

Portsmouth Cathedral itself dates back in one form or another to 1180, and over the centuries has helped local people and visitors through war and peace. Today it's home to the grave of the unknown crew member of the Mary Rose and a part of Lord Nelson's flag from HMS Victory.

The cathedral is available for group tours and private hire.

A short stroll from the Cathedral is Portsmouth Museum and Art Gallery, this free museum is home to galleries showcasing the city's art collection and the history of Portsmouth.

THE D-DAY STORY

The Normandy landings of June 1944 remain the largest seaborne invasion ever seen and The D-Day Story is the only UK museum dedicated to telling this momentous moment in history using objects, interactives and videos from the perspectives of those who were there. Divided into three distinct parts, a visit to the museum includes access onboard LCT 7074, the last surviving preserved landing craft tank which carried up to ten tanks during the Normandy campaign, immersive museum galleries and the impressive 83-metre Overlord Embroidery.

Group bookings, curator talks and private hire available.

SOUTHSEA CASTLE

Henry VIII's Southsea Castle was built in 1544 and is reportedly from where the king watched the sinking of his favourite ship the Mary Rose. A buoy, viewable from the castle ramparts, marks the wreck location. Visit the Castle Keep for an overview of this Ancient Monument's history.

The castle has an on-site restaurant and large marquee available for private hire, along with the Castle Keep.



Portsmouth Cathedral



LCT 7074 at The D-Day Story



Southsea Castle



CULTURAL CITY

Portsmouth has a packed year-round events calendar with something for all tastes.

FESTIVALS

- Victorious Festival
- Book Fest
- Comic Con
- International Kite Festival
- Southsea Food Festival

SPORTING EVENTS

- Great South Run
- Major sailing events such as GB SailGP and Clipper
- Coastal marathon and half-marathon
- Race For Life/Pretty Muddy
- Football at Portsmouth FC

OTHER NOTABLE ANNUAL EVENTS

- Portsmouth Pride
- Armed Forces Day
- Live at the Bandstand
- Portsmouth On Ice
- Seasonal events at attractions across the city



Portsmouth Guildhall

THEATRES, VENUES, ART AND LITERATURE

Portsmouth Guildhall - the city's premium venue hosts a varied calendar including events, music, comedy and drama.

Also includes the Portsmouth Music Experience exhibition.

Available to hire for conferences and events.

KINGS THEATRE AND THEATRE ROYAL

The city's two principal theatres, offering a wide range of travelling productions, local theatre, music, dance and comedy.

Both are Matcham designed theatres and available for private hire and behind-the-scenes tours.



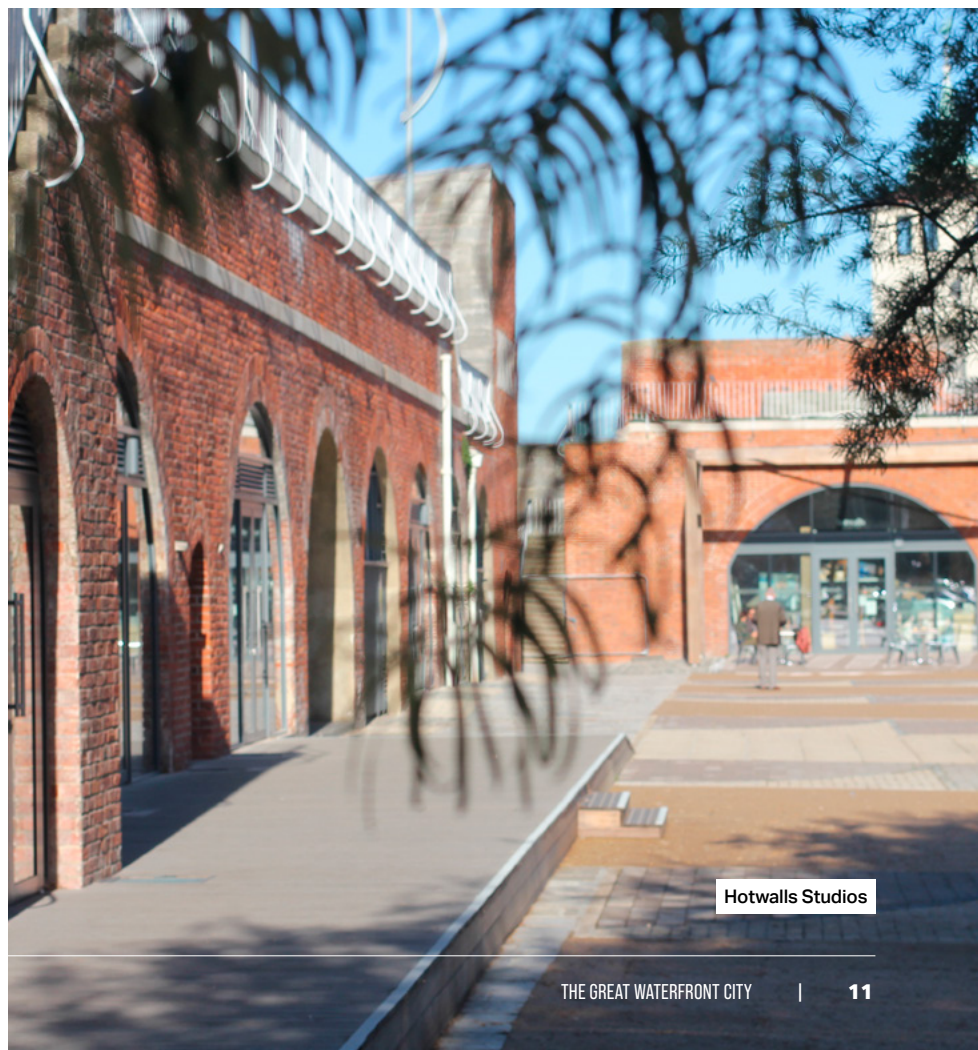
King's Theatre - credit Alecsandra Raluca Dragoi

ART

- Aspex Gallery
- Portsmouth Museum and Art Gallery
- Hotwalls Studios
- Windbreaks
- Look Up Street Art

LITERARY CONNECTIONS

Charles Dickens' Birthplace is the house in which the esteemed author was born, open as a museum. A number of famous authors have spent time in Portsmouth, including Sir Arthur Conan Doyle who wrote his first Sherlock Holmes story while working as a doctor in the city plus H.G. Wells, Rudyard Kipling, and more.



Hotwalls Studios



EXPERIENCES

A range of experiences are available across the city's attractions and venues enabling visitors to take a deeper dive into history, learn a new skill, or create something unique of their own.

These can include:

- Behind-the-scenes tours, curator talks and object handling at museums and theatres.
- Demonstrations and hands-on activities with artists at Hotwalls Studios and Aspex Gallery, including weaving, lino printing, jewellery making and painting.
- On-water activity including kayaking, paddle boarding and sailing at ASC Portsmouth.
- Archery, climbing, bushcraft, horse riding, orienteering and more at the historic Fort Purbrook and Fort Widley.
- Tours of Portsmouth Distillery, housed in the historic Fort Cumberland.
- Classes and demonstrations with South Coast Cookery.

Bespoke sessions can be arranged for groups and individuals. Experienced Tour Guides can also be booked to provide historical walks and tours. A series of suggested itineraries are also available on request.

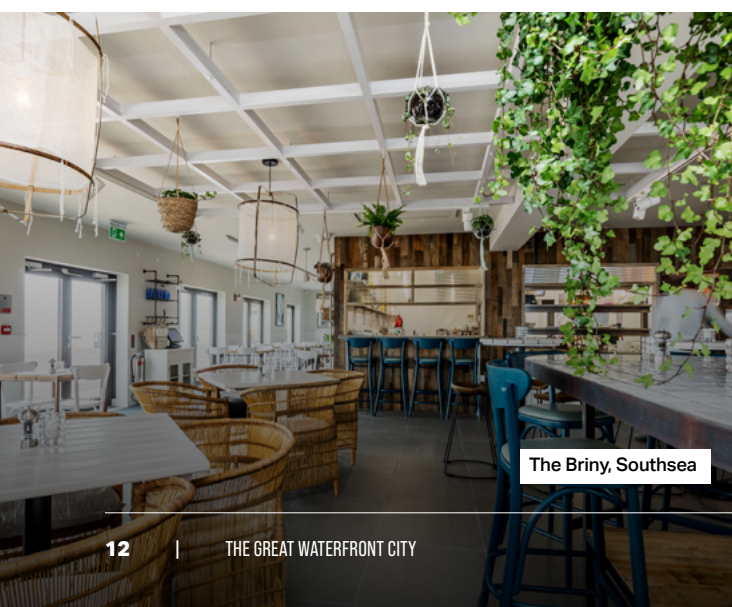
Contact the Visit Portsmouth Team for more information (see page 2).

FOOD AND DRINK

Portsmouth has a wide range of options for food and drink, with something for all tastes.

Options for larger groups include restaurant spaces in city hotels, on-board or alongside historic ships, pubs in Old Portsmouth, the grand Portsmouth Guildhall, restaurants on South Parade Pier, Gunwharf Quays eateries and world food choices in Southsea.

Contact the team with any requests and they can try and match you with the perfect place.



The Briny, Southsea

THE UK'S ONLY ISLAND CITY

The city is flat and easy to navigate on foot, with most of the main attractions located along the waterfront.

Portsmouth Harbour to the west is where the International Port, HM Naval Base and Portsmouth Historic Dockyard are located. At the entrance to this harbour is the area known as Old Portsmouth, leading into Southsea and on to the quieter Langstone Harbour on the eastern side of the city.

Portsmouth Harbour is a busy waterway with numerous ferries, cruise ships, naval craft, yachts and fishing boats sailing in and out daily. This makes the seascape from Southsea seafront an ever-changing vista to enjoy. From the Spinnaker Tower in Gunwharf Quays, the

Millennium Promenade, marked by a chain motif in the ground, leads along the waterfront into Old Portsmouth. At the path's end the new promenades created as part of coastal defence works begin and lead right along the southern edge of Portsmouth through the districts of Southsea and Eastney. The walk takes in two piers, an aquarium, The D-Day Story, Southsea Castle and more.

Langstone Harbour to the east of Portsmouth is popular for water sports and a haven for local wildlife with Farlington Marshes Nature Reserve located to the north. The coastal defence works have created new paths here and along Hilsea Lines to the north, areas where walkers can spot a wealth of nature, just on the edge of a busy city.





HOTELS

The city has a range of hotels from four- and three-star chains and independents to boutique hotels and quality budget options. A selection are listed here.

The elegant Queens Hotel overlooks Southsea Common and is just a short stroll from the beach. With stylish rooms – some offering sea views – it's a top spot for afternoon tea, a leisurely dinner, or evening cocktails. The garden is ideal for drinks or al fresco dining, with regular outdoor entertainment.

The Holiday Inn is also well placed near Southsea seafront, offering an ideal blend of comfort and convenience. The hotel has a variety of rooms to book, plus a restaurant, bar, gym, indoor pool, steam room and sauna.

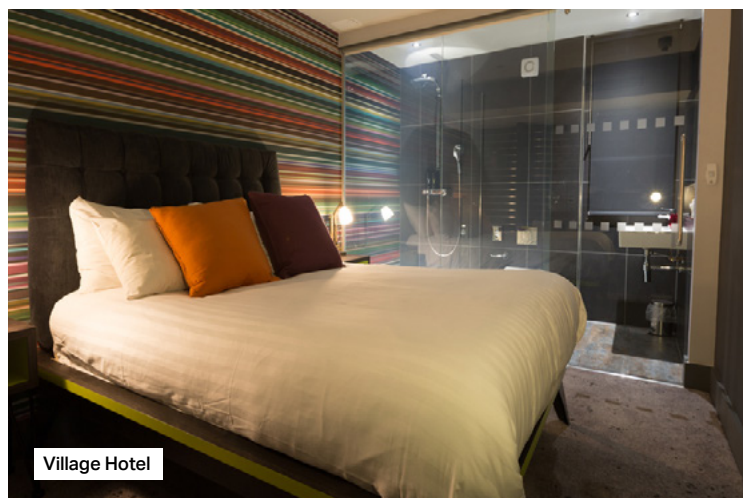
At Gunwharf Quays, the Holiday Inn Express is surrounded by restaurants and nightlife, and is just a short walk from Spinnaker Tower, Portsmouth Historic Dockyard and Portsmouth Harbour station.

The Royal Maritime Hotel is another option located close to Portsmouth Historic Dockyard, Gunwharf Quays and Spinnaker Tower. It features comfortable rooms and a hearty full English breakfast. The on-site restaurant, Horatio's, welcomes all visitors.

In central Portsmouth, the Ibis Hotel is a great base for exploring the city, located near Portsmouth Guildhall, Theatre Royal and Portsmouth & Southsea station. It offers cosy rooms, a 24-hour snack menu, on-site parking and a vibrant restaurant.

To the north of Portsmouth, the stylish Village Hotel has everything you need for a fantastic stay. Facilities include a pool, gym, lively pub and grill serving tasty food, a Starbucks coffee shop, and VWorks co-working space. Set in a peaceful location just off the M27, it's only a couple of miles from the city centre.



Also to the north is Portsmouth Marriott Hotel, perfectly suited for both business travellers and families. Designed with comfort and style in mind, the hotel rooms feature contemporary décor, high-speed Wi-Fi, blackout curtains, coffee makers, and flat-screen TVs, ensuring a relaxing stay for every guest.





Visit Portsmouth Team

Contact the team with any queries you may have or additional assistance required.

 tourism@portsmouthcc.gov.uk |  visitportsmouth.co.uk