

# Pullman

## VISITOR'S GUIDE



**PULLMAN**  
**CHAMBER of**  
**COMMERCE**



# WELCOME TO *Pullman*

Thank you for coming to Pullman.

We are so glad you are here!

There are countless things to see and do in our city, and we want to show you everything our community has to offer. The Chamber of Commerce and Visitor Center is here for you.

Come by and glean from our extensive collection of information about Pullman and Washington State University; your stay in our city might take on an adventure or two!

Experience the beauty of the Inland Northwest on a bike, hike, or putting green. Saunter through Pullman's historic downtown. Add "chic" to your wardrobe as you sample our boutiques. Check out our enticing assortment of coffee bars and eateries. Meet the WSU campus mascot for a photo shoot. New opportunities and experiences beckon... Welcome to Pullman!

**PULLMAN CHAMBER OF COMMERCE  
EXECUTIVE DIRECTOR**

*Marie Dymkoski*

## *Table of Contents*

4	History of Pullman
7	Coffee & Treats
12	Breweries & Wineries
14	Grab A Bite
28	Experience WSU
30	Arts in Pullman
32	Hikes & Trails
36	Golf
38	Parks
40	Fun for Everyone
42	Shopping in Pullman
48	Lentil Festival
54	Hotels
58	Meeting Spaces



# Pullman

HISTORY OF

## THE BEGINNING

The city of Pullman is situated within the original homelands of the Upper Palouse and Nez Perce Indians who used the land for hunting, gathering, gardening, and grazing. In the 1870s, settlers found that the fertile soils and proximity to a water source were perfect for cattle ranching. Platted in 1882 as Three Forks, became Pullman in 1884 in honor of railroad. The railways found their way to Pullman with Columbia and Palouse Railway building a line in 1883 and the Northern Pacific Railroad Company following around 1887. A year later, Pullman was incorporated. Around this time, Washington officially became the 42nd state of the United States, and the Washington State Legislature authorized the founding of a new land-grant college somewhere in the southeastern corner of Washington. Pullman would become the home of this new school.

*Today, WSU's Pullman campus is home to more than 17,000 students, and Pullman extends far across a hilly landscape. A college town at heart, it is also an actively growing city and community.*

## BRELSFORD WSU VISITOR CENTER

Dominated by the massive concrete "WSU" initials guarding its entrance, the Brelsford WSU Visitor Center is a fitting gateway to the Washington State University campus. As an information and resource center for the campus community, the center highlights WSU teaching, research, athletics, and student and faculty contributions. One can also find official Cougar merchandise, including locally produced wine and WSU's signature Cougar Gold cheese.



Pullman Marketing

## PULLMAN CHAMBER OF COMMERCE

The mission of the Pullman Chamber of Commerce and Visitor Center is to promote, advocate, and support businesses and the community of Pullman; to make Pullman a better place to live, work, and do business. The Chamber offers a wealth of information and resources about Pullman and surrounding regions. Brochures featuring everything from RV camping to day-trip plans are available online and at the center. Online offerings are extensive and include guides, service directories and business information. See [pullmanchamber.com](http://pullmanchamber.com) and [visit-pullman.com](http://visit-pullman.com).



116<sup>th</sup> Photo Section, Washington National Guard

## PULLMAN DEPOT HERITAGE CENTER

When Pullman, Washington, became the location for train stops on not one but two major lines, it was necessary to create a depot to accommodate the needs of passengers. The Pullman Depot was constructed in 1916 and dedicated in 1917. While railroad service was discontinued in the 1960s, the original building remains and accommodates local businesses as the Pullman Depot Heritage Center. The building is also undergoing transformation. Under the auspices of the Whitman County Historical Society, ongoing renovations aim to restore the depot's original look—including its ceramic light green roof tiles. Visitors are welcomed during posted hours.



## PULLMAN'S DOWNTOWN WALK OF FAME

The striking, diamond-shaped black tiles embedded in downtown Pullman sidewalks honor individuals who served the Pullman community in a significant way and improved the quality of life for Pullman residents. A brochure mapping the walk and listing Walk of Fame award recipients is available through the Chamber of Commerce.

# *Taste*







# Coffee, Sweets, & Treats

## CRYBABY CAFÉ

Located in Adams Mall on College Hill and boasting indoor and outdoor seating, Crybaby Cafe offers espresso drinks, food, and a full bar. Food selections include sandwiches--the Crybaby Cuban, for example--and French Toast Sticks with Maple Whipped Cream. Open from early mornings to late nights.



## DAILY GRIND

Daily Grind Espresso was first established in 1995 as a way for the people of Pullman to purchase gourmet coffee on their daily commute. Now located on North Grand Avenue, Daily Grind's seasonal drink menu, fresh baked goodies, and home-made sandwiches will perk up any part of your day.

## DOM'S DONUTS

When it comes to Dom's Donuts, many find that resistance is futile. Made fresh to order with signature flavors and toppings, options run from Maple Bacon to Cookies and Cream. Dom's donuts can be purchased online or in-person at their trailer on Grand Avenue, and custom orders are welcomed.



## FERDINAND'S ICE CREAM SHOPPE

Ferdinand's Ice Cream Shoppe, located on the Washington State University Campus, has been a staple in Pullman and WSU for decades. Home of gourmet ice cream, espresso drinks, and award-winning Cougar Gold Cheese.

## GYPSY JAVA

Serving up coffee that is organic and roasted locally, Gypsy Java boasts a menu that includes Lotus plant-based organic energy drinks as well as organic lattes, mochas, and specialty drinks. Customers will also appreciate Gypsy Java's friendly staff and convenient drive-thru location on Bishop Boulevard.



## NEILL'S COFFEE & ICE CREAM

Belying their name, Neill's Coffee and Ice Cream serves up a broad array of food items as well. Paninis, burritos, and breakfast sandwiches appear on their menu, as well as unique flavors of ice cream and a full array of hot and iced beverages...including ice cream floats. Located on Main Street.

## PALOUSE COUNTRY CANDY

Palouse Country Candy furnishes a wide assortment of sweet treats for a variety of tastes. Offerings include candy by the scoop, Cowgirl Chocolates, and other regional favorites as well as dairy-free, gluten-free, nut-free, organic, and vegan selections. Palouse Country Candy even serves gelato. Located on Grand Avenue.





## SUGAR BABE BAKERY

Sugar Babe Bakery is a 100% vegan bakery specializing in allergy friendly options, all of which are made in-house. Forsaking the savory for the sweet, Sugar Babe's cakes and cupcakes, "pop tarts" and pastries are among customers' favorites. Located on Main Street, the bakery welcomes custom orders.

## SWEET MUTINY

Sweet Mutiny's array of frozen yogurt, ice cream, toppings, cupcakes, macarons, and treats-- including jumbo gluten-free cookies and Rice Krispies Treats-- can make any occasion special. Located on Bishop Boulevard.



Pullman Marketing

## POPO

Featuring authentic Chinese hotpots and Bubble teas originating from Taiwan, POPO's menu is unique and enticing. Local favorites include spicy popcorn chicken, milk buns, and an array of beverages that are hot & creamy, iced & fruity, or custom made. Popo is found on Bishop Boulevard.

## PUP'S & CUPS

Taking meticulous care in the selection, roasting, and brewing process, Pups and Cups on East Main Street strives to serve an outstanding artisan coffee. Catering to customer preferences, Pups & Cups also welcomes well behaved dogs and offers snacks prepared especially for them. Additional menu items include pastries handmade by a local baker; paninis, burritos, and charcuteries; and local wines and beers.



## ROOST COFFEE & MARKET

Situated in the Bell Tower on Spring Street, Roost Coffee & Market features made-in-house coffees and pastries. Open for breakfast, lunch, and dinner, menu favorites are baked oatmeal with brown sugar and cream, handmade croissants, and custom-made coffee syrups.

Photography By: Pullman Marketing



Pullman Marketing



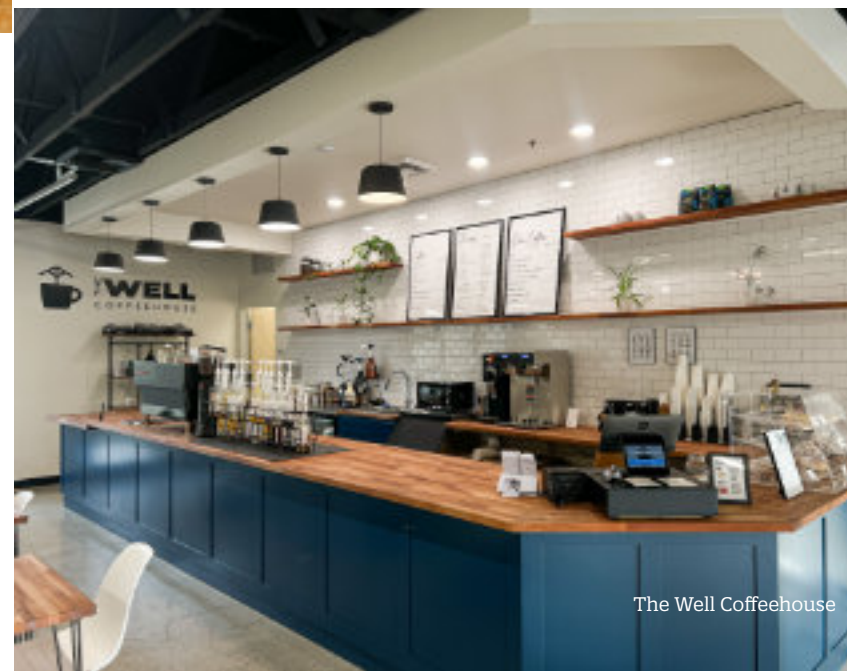
Pullman Marketing

## THE WELL COFFEE HOUSE

With a mission of nurturing community, The Well Coffee House on Grand Avenue purchases its coffee beans locally, donates to local charities, and encourages patrons to gather over coffee. Menu items include a tempting assortment of coffee flavors as well as coffee, non-coffee, and tea selections.

## THOMAS HAMMER

Located in downtown Pullman on Main Street, Thomas Hammer Coffee Roasters offers outdoor as well as indoor seating, study spaces, and hot and cold beverages and food. Menu items include Blueberry Fog, Velvet Hot Cocoa, and Butterfinger Candy Crush as well as scratch-baked scones and hand-carved sandwiches.



The Well Coffeehouse



**BREWERIES  
&  
WINERIES**



**ANOTHER ROUND BREWING CO.**

Another Round Brewing Company uses local Washington ingredients to create its own style of beer and boasts custom-made tables crafted by the owner. Also offering pizza, corn hole, ping-pong, and TV, Another Round Brewing Co. is located on North Grand Avenue.

**PARADISE CREEK BREWERY  
TRAILSIDE TAPROOM**

With seating both indoors and out and aiming to brew the best beer possible, Paradise Creek Brewery Trailside Taproom welcomes all to their Riverview St. location. Patrons may bring their own food or have orders delivered free from Paradise Creek Brewery's downtown location. Tours are offered frequently and can be requested.



**MERRY CELLARS WINERY**

Endeavoring to create the finest of Washington wines, Merry Cellars applies sustained, meticulous attention to every step in winemaking. Their grapes are picked and sorted by hand and processed with care and restraint. Founded almost 20 years ago, this family-owned winery offers tastings and tours at their location on the outskirts of Pullman.







# GRAB A *Bite to Eat*



## BIRCH & BARLEY

Aspiring to create a singular dining experience for the Palouse, Birch & Barley was established by family and friends more than a decade ago. Offering "American fare with Southern flair," favorites such as Cougar Lobster Mac & Cheese and house-made Tomato-Basil soup are accompanied by an extensive menu of alcoholic beverages including 80 whiskey options. Located on Bishop Boulevard.

## COUGAR COUNTRY DRIVE-IN

A fixture in Pullman since 1973, family-owned and managed Cougar Country Drive-In can be counted on to generously accommodate the heartiest appetite. Burgers are 100% locally sourced Angus beef; ice cream is soft-serve and amply portioned in Cyclones, shakes, malts, dipped cones, and more. Located on Grand Avenue.

## HEROS N' SPORTS

Owned locally and frequented by Pullmanites for more than two decades, Heros n' Sports is distinguished by a collection of approximately 650,000 sports cards as well as an appealing assortment of paninis, grilled wraps, hot sandwiches, subs—and fresh homemade soups. Located on Kamiaken Street.

## RED CARD PUB & GRUB

Unpretentious, welcoming, and committed to "making sure your visit is worthwhile and enjoyable," Red Card Pub serves up a variety of Tex-Mex food and beverages. Salsas are made in-house, and Red Card's Taco Bar includes a popular Beef-Brisket Taco and Creamy Queso Nachos. Located in the Edison Center at the corner of Harvest Drive and Bishop Boulevard.

## AMERICAN

### PARADISE CREEK BREWERY

Situated in Pullman's former post office on SE Paradise Street, Paradise Creek Brewery's beers were originally brewed in the building's basement. Vaunting finely crafted, "unique and flavorful" ales such as Pokerface Blonde, the brewery also offers an extensive food menu including the House specialty, Cougar Gold Mac-N-Cheese.

### SOUTH FORK PUBLIC HOUSE

Proximity to the South Fork of the Palouse Water Basin gives the South Fork Public House its name, but the appeal of fine food in a fun and friendly environment extends beyond the Palouse. A sizeable selection of alcoholic beverages accompanies menu items such as Pullman Pretzels, Famous Mac & Cheese, and the South Fork Ribeye. Located in the Wheatland Mall on Grand Avenue.





# ASIAN

## GOLDEN TERIYAKI

Although the Golden Teriyaki features original Chinese cuisine, its menu options are many and wide-ranging. Choices number over 200 and span everything from Wonton Soup to the Big Hawaiian sandwich.

## IT'S POKE-MAN

Nestled in a small corner of downtown Pullman, this cozy poke bar is a go-to for many. Supplied with a menu and instructions, customers are invited to choose a base, protein, toppings, and sauce; sauces range from spicy & salty to creamy sweet. It's Poke-Man can be found downtown at the intersection of Main and Grand.

## MANDARIN HOUSE

A welcoming ambiance and enticing menu greet guests at the Mandarin House on Grand Avenue. Crab Rangoon, Cashew Nut Chicken, and Broccoli Beef are only a few of the considerable choices.

## MELA BANGLADESHI CUISINE

Mela Bangladeshi takes pride in serving bona fide, tasty, heart-healthy Bangladeshi food. All dishes are made from scratch, and main entrees are free of peanut or peanut oil, gluten, MSG, and soy. Guests to Mela's can enjoy their meals outside on a heated patio, or indoors.

## MINH'S RESTAURANT

Welcoming customers for 40 years at its restaurant on Stadium Way, Minh's boasts "Pullman's most authentic gourmet Asian Food." An appealing array of Indian, Thai, and Korean dishes populate the menu, and offerings are MSG-free. A few of the men's standouts are Hot & Spicy Chicken, Shaky Steak Beef, and Bubble teas.



## NEW GARDEN RESTAURANT

For many in the Palouse region, the New Garden is a long-standing favorite. Guests will find the restaurant accommodating to families, friendly to all, and an inviting place to gather. Included in their menu is an extensive array of Chinese and Korean food and a selection of American favorites. Diners will also enjoy the back dining room's "waterfall wall."

## O-RAMEN

Although ramen can be touted as "the ultimate comfort food," an immense difference exists between authentic ramen and the college-student variety. Just preparing the broth at O-Ramen's is a 12-hour process. Despite the effort and expertise needed for the task, one of O-Ramen's goals is to offer a "quick and affordable lunch spot for students and the community."

## PHIKUN'S THAI CUISINE

Located on South Grand Avenue and offering an attractive interior décor, Phikun's specializes in genuine, authentic Thai cookery. Amidst an impressive variety of menu items are Pad Ginger, Tofu Pad Thai, Tom Yum soup, and Roasted Duck Curry, a House specialty.

## RED BENTO

Elegant dining and a distinctive mix of cuisines mark Red Bento's brand of Asian Fusion. Specialties are Sushi and Teriyaki as well as Chinese, Thai, Japanese, and Korean fare. The much-loved Bento boxes—meals packed Japanese-style in a Bento box—are also available.

## THE EMERALD

With a warm and inviting ambiance, The Emerald provides a welcoming space for both casual diners and those celebrating a special occasion. Indulge in popular Chinese dishes like sweet and sour spare ribs, or their Szechuan chicken.

## TAN'S CHINESE RESTAURANT

Wok Tossed Mongolian Beef, Crispy Garlic General Tso's Chicken, and Chinese doughnuts highlight the menu at Tan's. Options are varied and extend far beyond this small sampling. Located on Bishop Boulevard.

## THAI GINGER

Red and Yellow curries, soups, salads, and Pad Thai, along with a diversity of appetizers and entrees, are available at Thai Ginger, located on Grand Avenue. Thai Ginger also encourages patrons to specify their spice level when ordering: mild, medium, hot, or very hot.

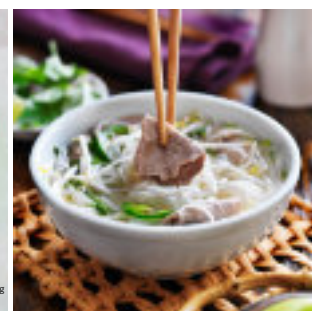
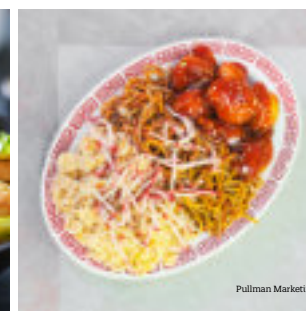
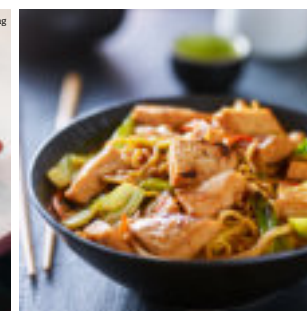


## TOKYO SEOUL

For those partial to Japanese and Korean food: creating bona fide Sushi and Korean BBQ is Tokyo Seoul's forte. Billed as an Asian Fusion restaurant, Tokyo Seoul presents an extensive menu of Japanese and Korean dishes complete with specialties like the Alaskan Roll with King crab and the "set on fire" TNT Roll.

## ZIPE SUSHI

Offering sushi, sashimi, poke bowls, and more, Zipe Sushi can be found in the Adams Mall on Colorado Street. Menu items are available for dine-in or take-out.





## CARLITA'S

For those exploring WSU, Carlita's is conveniently located within the Compton Union Building in the heart of the WSU campus. The restaurant offers traditional Mexican food with a variety of nachos, quesadillas, burritos, tacos, and more.

## NAYARIT MEXICAN RESTAURANT

Guests at the Nayarit are treated to expertly prepared and cheerfully served Mexican food in an inviting and friendly atmosphere. Portions are generous and menu offerings are varied. A few of the many options are jarritos, the popular horchata, and strawberry lemonade. Located on Main Street.



## NUEVO VALLARTA

Yearning for south-of-the-border adventures? Begin with a trip to Nuevo Vallarta. A colorful and vibrant décor, outdoor and indoor seating, and a comprehensive array of menu options greet patrons at the restaurant's location on Grand Avenue. Nuevo Vallarta's menu also features a selection of Mexican favorites including sopitos, flautas, and taquitos.

Photography By: Pullman Marketing

## RANCHO VIEJO

Rancho Viejo is a family-welcoming Mexican restaurant. Guests will enjoy its artfully designed interior, comfortable seating, and entrees delivered sizzling to the table. A selection of children's orders, vegetarian items, and fresh and healthy choices supplement an extensive menu of traditional fare. Rancho Viejo is located on South Grand Avenue.

## RED CARD PUB & GRUB

Red Card Pub and Grub located in the Edison Center, is our local Tex-Mex restaurant. With a chill atmosphere and their whiskey-rita, you'll be sure to have unforgettable moments with friends and family when you walk through their doors.



# MEXICAN



## TAQUERIA LAS TORRES

Offering Mexican fare at attractive prices, Taqueria Las Torres operates out of a food truck on NE Whitman Street. Menu items include Corn in a Cup, Mulitas, Tortas, Steak Ranchero, and Carne Asada.

## TIN TAN TACOS

Boasting the popular Rated X Burrito, made with a supremely spicy habanero sauce, Tin Tan Tacos offers both American and Mexican food. The restaurant can be found in two Pullman locations, one near the WSU campus on Colorado Street and the other in the Lumberyard on Grand Avenue. Specials are available every day of the week.

Photography By: Pullman Marketing



# BAR, GRILL & PUB



## ETSI BRAVO

DJs, dancing, crafted cocktails, and gourmet snacks await patrons of Etsi Bravo, a cocktail lounge and nightclub on Pullman's Main Street. Their themed parties are a local favorite.

## LUMBERYARD FOOD HALL

Describing itself as a "multi-cuisine food hall," the Lumberyard is far more. Among other things, it is a novel and creative solution to squabbles about where to go for dinner. With multiple menu options, a children's play corner, gaming area and arcade, enclosed outdoor seating, and full bar, the Lumberyard Food Hall accommodates a variety of customer wants and needs. Among the Lumberyard's restaurants are The Bowl (Salad Bar), Island Grill, Tin Tan Tacos, and Timber, an American Pub.



Alexander Coy

## MY OFFICE BAR & GRILL

My Office Bar and Grill is a simple hangout for pub grub and tap brews. They're ready to serve with a full bar that has 29 beers on tap and a full menu all-day with lunch specials and daily soups in the afternoon. Located on Grand Avenue.

## RICO'S PUBLIC HOUSE

Originally established in 1909, Rico's has been an integral part of Pullman's downtown ever since. Promoting a relaxed atmosphere, Rico's invites visitors to peruse their collection of books, indulge in board and arcade games or pool, and order from its wide-ranging assortment of food and drinks. A frequent host to a variety of music and entertainment, Rico's also offers open-mic Mondays and live jazz and blues weekly.

## ROUND TOP PUBLIC HOUSE

Located right outside of downtown Pullman in the Palouse Hills, Round Top is a full-service casual dining restaurant with a great view of the Palouse Ridge Golf Course. With good food and excellent service, making a trip to the Round Top Public House is worth it.

## THE COUG

The Coug is a go-to stop as a part of your tour of Pullman and WSU. With fun and creative food and drinks The Coug is a great place for Coug's to hang out, come and enjoy a piece of Cougar culture.

## THE EMPORIUM

Elevate your evenings at The Emporium, a nightclub that plays a part in Pullman's nightlife. Or take some time to enjoy a burger, sandwich, their happy hour or power hour at their sit-down restaurant.

## THE LAND

The Land is a relaxed environment bar & restaurant with pool tables, and darts, making this a great place to hang out. The Land is the neighborhood restaurant & bar at the heart of Pullman's Apartment Land.



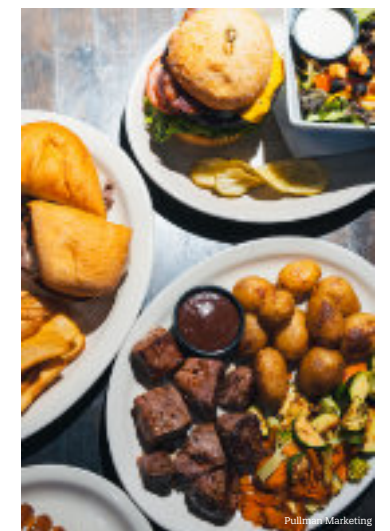
## VALHALLA BAR & GRILL

Valhalla features a diverse menu of burgers, salads, sandwiches, wings, and other appetizers with a wide range of drinks to select from. Located right next to the WSU campus, it's a popular location for students, and a great place to visit.



## ZEPPOZ

In addition to the food menu at Zeppoz, there is a wide variety of drinks available at the bar. There's also a bowling alley and casino, adding more fun activities for everyone.





# BRUNCH



## OLD EUROPEAN

Specializing in made-from scratch breakfast and brunch foods and distinctly European in decor, the Old European is more than popular on weekend mornings. With its mission encapsulated in the Polish saying “Guest in the House, God in the House,” Old European uses 100% real ingredients in batters made fresh, and recipes are exclusively “those that made it across the Atlantic.” Orange juice is fresh-squeezed, coffee is freshly ground, and the whipped cream adorning Swedish Crepes is the real thing. Located on Grand Avenue.

## ZOE COFFEE & KITCHEN

Owned and devotedly operated by longtime Pullman residents, Zoe's is proud to be “Pullman's Urban Diner.” Offering outdoor and indoor seating and a comprehensive collection of fine breakfast, lunch, and dinner fare, Zoe's restaurant also serves award-winning coffee and espresso drinks. Appearing on the breakfast menu are Stuffed Croissants, Strawberry Crepes, and the One-Eyed Jack; hand-crafted burgers are available for lunch, and prime rib for dinner.

Photography By: Pullman Marketing



# GREEK



## THE BLACK CYPRESS

Proffering fine food, elegantly served, and a distinctive décor, The Black Cypress has become synonymous in Pullman with fine dining. Specializing in Greek and Italian food and fine wines, menu selections vary. Located downtown on Main Street.

## YIA YIA NIKKI'S

Defining “Yia Yia” as “the most commonly used Greek term for Grandmother,” Yia Yia Nikki's cooks from the heart. Authentic Greek and Mediterranean food is prepared with fresh and locally sourced ingredients, and vegetarian options as well as a kid's menu are included.



Pullman Marketing







Pullman Marketing

## SELLA'S CALZONE & PIZZA

A refuge for WSU students and the Pullman community since the 1980s, Sella's serves up comfort food extraordinaire: calzone, pizza, pasta, and bread. Salads and beverages round out the menu, as does a selection of choices for kids. In keeping with a unique tradition, however, adults as well as children are provided with crayons and canvases (placemats) to draw away any blues. Exceptional artwork is displayed in Sella's Hall of Fame. Located on Main Street next to the WSU campus.



## SCUSI!

Scusi! Pasta offers lunch and dinner menus featuring irresistible "House-made Italian Favorites." Among the restaurant's dinner options are Cougar Gold Chicken Mac & Cheese, House-made Lasagne, and Smoked Salmon Tortellini. In addition, an Italian-style Deli serves paninis, flatbreads, fresh pasta, and gelato. Scusi's hope is to add a little Italian vibe to Pullman's downtown.



Pullman Marketing



## PIZZA PERFECTION

Making their pizza dough fresh daily, Pizza Perfection has served Pullman for decades. Priding itself on providing a "quality product at a good price," the restaurant's "Buy One Get One Free" offer has continued to the present day. In addition, Pizza Perfection offers daily specials for pizza by the slice.

## PORCH LIGHT PIZZA

Describing their fare as fast-fired and artisan, Porch Light Pizza fills a unique niche in Pullman. Pizzas are plate-sized and crafted with gourmet sauces, cheeses, and toppings. Customers can choose from Porchlight's specials--like the popular "Popeye" which features spinach among its toppings--or build their own.



Pullman Marketing

# ITALIAN



Pullman Marketing



Pullman Marketing



# *Explore*





# EXPERIENCE THE *Cougar Family*

*It is no secret that most people come to Pullman for reasons related to Washington State University. A top research institution with 6 campuses, 11 academic colleges, and more than 200 degree programs, WSU draws students from around the world. With over 17,000 in attendance at WSU Pullman, opportunities for new experiences are almost unlimited. Whether you have been in Pullman for years or are making your first visit, chances are you haven't seen everything the WSU Campus has to offer. Read on for a sampling of campus destinations, most of which are free and open to the public.*



## WASHINGTON STATE UNIVERSITY

Home to the Cougars, WSU is a top public research with campuses across the state. The Pullman campus occupies the northeast portion of the city.

## COUGAR ATHLETICS

Gesa Field at Martin Stadium is the home turf of the Cougars. On game days, the celebration of Cougar pride is an experience you won't want to miss. Fans pour into Pullman from across the state and beyond, swelling the population by thousands, and the roar from the stadium can be heard in every corner of the city. In the midst of all the excitement, don't forget to schedule a photo shoot with the bronze version of Butch, WSU's beloved mascot. Despite rumors, you won't need a cap and gown for the event.

## LEWIS ALUMNI CENTER

Dedicated in 1989 to mark WSU's centennial, the Lewis Alumni Centre at WSU is home to the WSU Alumni Association; it is also one of the most elegant and beautiful spaces on campus. Showcasing the nature of Cougar loyalty, hundreds of alumni and friends had a part in making the Centre what it is today. WSU Grads from any era will find a visit well worth their time—and no help at all in tempering pride in their alma mater.

## FERDINAND'S ICE CREAM SHOPPE

While exploring campus, stop by Ferdinand's Ice Cream Shoppe. Choose from ice cream flavors found nowhere else and goodies coveted campus-wide. Take home a can or two of Cougar Gold cheese, sample other varieties, and watch the cheese or ice cream production process from the viewing center.

## WSU BEAR CENTER

For those uneasy at the prospect of encountering a grizzly bear close up, there's no need to worry. WSU's Bear Research Center, devoted to the research and conservation of the grizzly bear and the only facility of its kind in the nation, nurtures their charges within a large, fenced exercise yard. Viewers can observe the bears from a viewing area in the parking lot.





# ART IN *Pullman*



## JORDAN SCHNITZER MUSEUM OF ART - WSU

Art spanning two centuries and exhibited throughout six galleries awaits visitors to the Jordan Schnitzer Museum of Art at WSU. Exhibitions by local and national artists number six to ten each year. Treat yourself to a new experience or refresh a love for the creative; you may find in the museum a welcome sanctuary. Located in the heart of campus, across from the CUB.

## GALLERY II AND III - WSU FINE ARTS CENTER

WSU's Fine Arts Center Gallery II highlights the work of regional, national, and international artists, some of them hosted by the Visiting Artist and Scholar program. Students manage the exhibits seen in Gallery III, including the annual Bachelor of Fine Arts exhibition.

## ARTISANS AT DAHMEN BARN

Artisans at The Dahmen Barn leverage their remarkable facility to present an all-encompassing array of programs, classes, exhibits, fairs, culinary events, and performances. Here you will find opportunity to explore, learn, observe--and buy--the creative.



Photo by Kris Faulkner, courtesy of Design West Architects

## PULLMAN CIVIC THEATRE

From "Shakespeare in the Park" to "Shows on the Side," "Main Stage," and "Pop Up Productions," the Pullman Civic Theatre serves up an assortment of live theatre. Aspiring to present affordable entertainment to the community and outlets and education for theatre participants, the PCT also hosts camps and workshops for those interested in honing their skills.

## REGIONAL THEATRE OF THE PALOUSE

Opening more than a decade ago, the Regional Theatre of the Palouse has entertained the Pullman community with everything from Fiddler on the Roof to Funny Girl and The South Pacific. RTOP offers several productions each season, and visitors can enjoy a Broadway musical—if the performance schedule allows-- or even take advantage of the theatre's Performing Arts School.

## WSU WALKING ART TOUR

For visitors and Pullman residents who have wondered about the large, blue, technicolor heart on WSU's campus: the self-guided cell-phone WSU Walking Art Tour will guide you to more than 50 outdoor works of art, including the heart, and provide audio information about each piece.



Photo by Kris Faulkner, courtesy of Design West Architects



# BIKING, HIKING, & WALKING *Trails*



Pullman Marketing

## ARBORETUM PERIMETER TRAIL

Described as a peaceful hike with beautiful views, this 1.9 mile loop trail is open all year. Found just across from the WSU Grizzly Bear Habitat, this trail forbids dogs but welcomes runners, walkers, and snowshoers.

## BILL CHIPMAN PALOUSE TRAIL

This paved, level, 10-foot-wide and eight-mile-long path is well-used and a favorite of the entire Palouse region. Providing safe, off-highway passage between Pullman and Moscow and WSU and Uofl, the trail accommodates all ages and abilities, including wheelchairs. Visitors will appreciate an easily accessible way to experience the Palouse close-up.

## GRAND AVENUE GREENWAY

Grand Avenue Greenway is a segment of the Pullman Loop trail, circling Pullman's College Hill neighborhood as well as the WSU Campus. The Grand Avenue Greenway begins at Pullman Depot Heritage Center and follows NW Terre View Drive.



Pullman Marketing

## KAMIAK BUTTE STATE PARK

Unforgettable panoramas await those willing to ascend Kamiak Butte. A switchback trail to the top puts the hike well within reach even for children, and five miles of trails throughout the park showcase over 150 species of birds, mammals, and vegetation. Facilities at the trailhead include shaded picnic areas, four large shelters, and a playground.

## KLEMGARD PARK

Situated in out-of-the-way and scenic surroundings, Klemgard County Park is a go-to for locals. With 59 acres, kids and pets have space to run. Shelters, picnic areas, volleyball courts, and a hiking trail, among other amenities, make Klemgard ideal for families and large groups.

## MAGPIE FOREST TRAIL

The Magpie Forest Trail offers a peaceful outdoor experience on a 0.5-mile loop, taking about 15 minutes to complete. This hike appeals to those looking for different varieties of birds, as well as those seeking options away from the crowds.



Recraft Creative



Pullman Marketing



Pullman Marketing

## STEPTOE BUTTE STATE PARK

A unique, thimble-shaped spectre against a backdrop of undulating wheat fields, Steptoe Butte sees 200 miles into Idaho and Oregon from its location in Washington. Visitors to the park can sight the Blue and Bitterroot mountain ranges and read some of the park's rich history on interpretive signs.

## WAWAWAI COUNTY PARK

Situated in the Snake River Canyon upstream from Lower Granite Dam, this park offers great camping, picnics, fishing, and water sports. Visitors will enjoy the quick interpretive trail and can spend the day relaxing next to the water.





*Play*



# HIT THE *Green*



Pullman Marketing



## AIRWAY HILLS GOLF CENTER

Visitors to Pullman will discover refreshing, out-of-the-ordinary, year-round family fun at Airway Hills Golf Center. In the midst of sweeping Palouse views is a Deluxe mini golf course, a 9-hole PAR-3 Target Course, and a self-service driving range. Golf simulators facilitate wintertime golfing, and the center offers lessons, junior golf, and more.

## PALOUSE RIDGE GOLF CLUB

Designed by John Harbottle III, the 18-hole Palouse Ridge Golf Course offers a challenging layout amidst dramatic views of the Palouse. Ranked among the best golf courses in Washington (#8), Palouse Ridge is also home to WSU Men's and Women's Golf. The Golf Club spans more than 350 acres and boasts a practice facility, pro shop, and golf instruction. The Round Top Public House, situated within the 7,000-square-foot clubhouse, offers fine dining.



Rob Perry



## The City Of Pullman

## CITY PLAYFIELD

820 SE South St

## CONSERVATION PARK

799 NW Darrow St

## ★HARRISON TOT LOT

337 NW Harrison St

## ITANI PARK

950 SW Crestview Dr

## ★ KRUEGEL PARK

705 SE Dilke St

## LAWSON GARDENS

705 SE Derby St

## ★ MARY'S PARK

1570 SE Johnson Ave

## ★ MCGEE PARK

1220 NE Lybecker St

## ★ MILITARY HILL PARK

500 NW Greyhound Way

## ★ REANEY PARK

690 NE Reaney Way

## SPRING STREET PARK

325 E Spring

## ★ SUNNYSIDE PARK

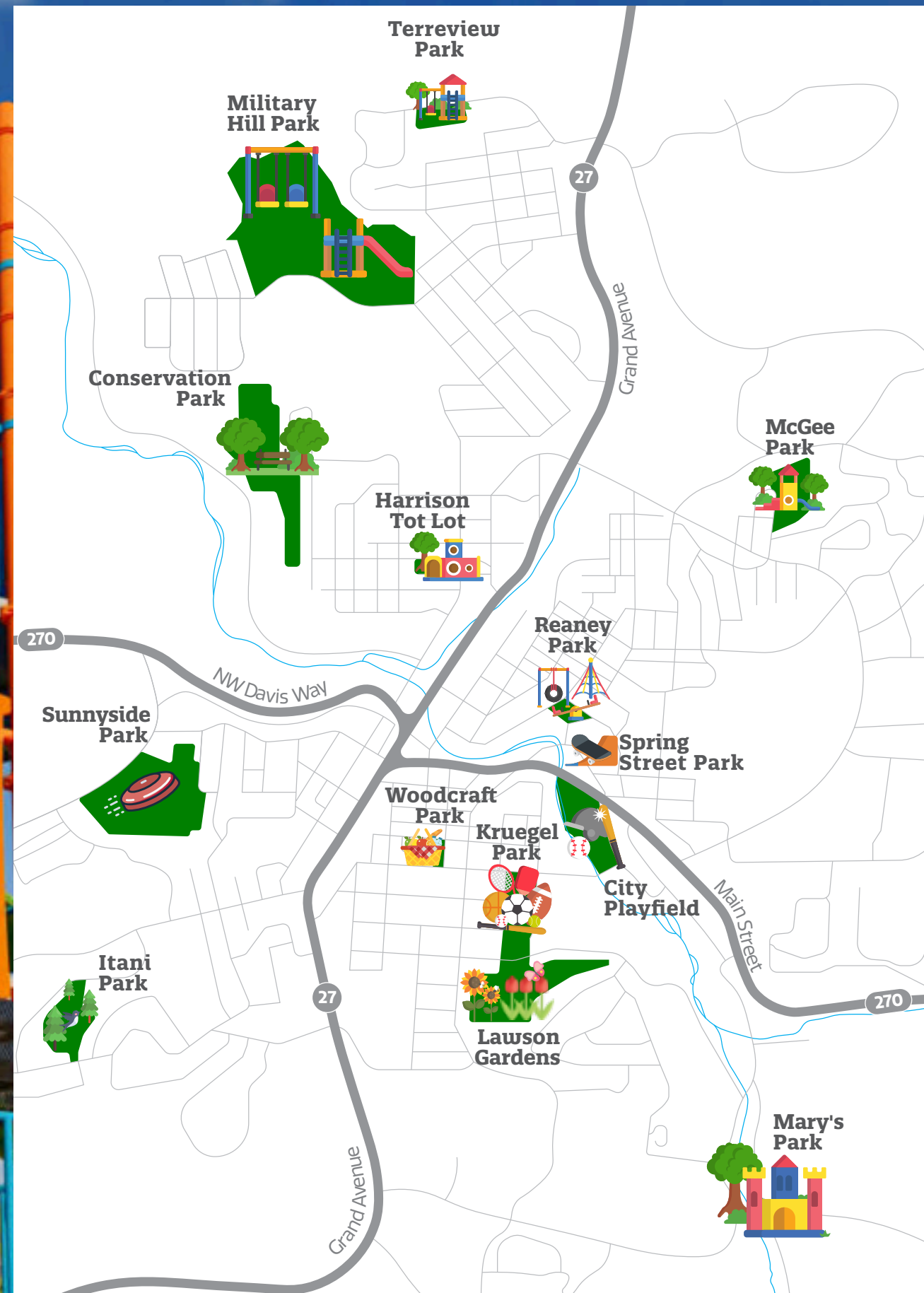
147 SW Cedar St

## TERRE VIEW PARK

325 NW Terre View Dr

## WOODCRAFT PARK

370 SE Pine St





# FUN FOR *everyone*



*Enjoy the variety of experiences unique to our city. Bike, or hike, the Chipman Trail to Moscow; paint pottery at Terracotta; play mini-golf at Airway Hills. Don't miss your chance to discover the charm of Pullman!*

## 3FORKS BIKE SHOP

Believing that riding a bike changes lives, 3Forks Bike Shop in downtown Pullman offers lessons and programs for young children as well as supplies for bike repair, maintenance, and enhancement. Visitors will find the 3Forks Bike Shop staff eager to help bikers build skills at all levels.



## MINI GOLF AT AIRWAY HILLS

For an out-of-the-ordinary excursion, visit the deluxe miniature golf course at Airway Hills. Designed to follow the natural contours of the Palouse hillside, the course includes challenging boulder obstacles, water features, and sand traps. Fun for adults and kids alike!

## NEILL PUBLIC LIBRARY

With its beautifully designed quiet spaces, broad variety of holdings and programs, and helpful staff, Pullman is proud of its community library.

## PALOUSE DISCOVERY SCIENCE CENTER

A fascinating destination for visitors, Palouse Discovery Science Center focuses on the intersections between science, technology, engineering, art, and mathematics (STEAM), inspiring viewers to discover and imagine what could be.

Photography By: Pullman Marketing

## PULLMAN VILLAGE CENTRE CINEMAS

Yearning to see a movie or two on the big screen? Theatre-goers will appreciate the eight auditoriums with wall-to-wall screens and stadium-style luxury seating.

## TERRACOTTA

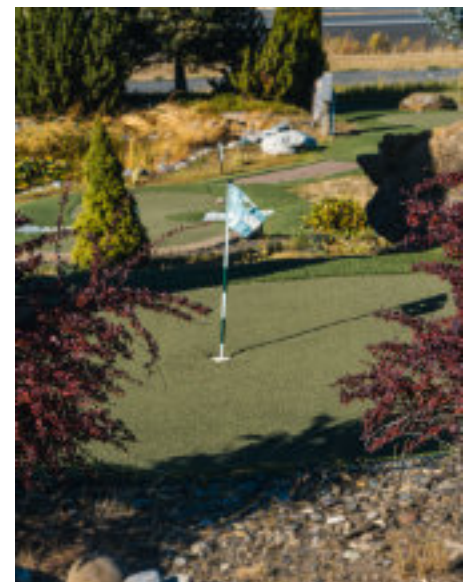
Spend some time at Pullman's community pottery studio. Terracotta hosts a wide range of classes and workshops for pottery, sculpting, painting, and more. Come hone your skills or develop new ones!

## THE BATTING CAGE

Come out for a fun day at Pullman's batting cages! Visitors are welcome and will enjoy the Batting Cage's state-of-the-art facilities and friendly, supportive atmosphere.

## ZEPPOS

With 24 lanes of bowling, family dining, an arcade, a bar, and casino, Zeppoz is popular in Pullman! Visitors will find it accommodating to all ages.



Photography By: Pullman Marketing



# SHOP downtown



*Take the time to wander and explore downtown Pullman. There's artisan coffee for you and special treats for your canine companion, all at the same establishment. There's historic architecture and "modern industrial"; there are shops where owner expertise is offered as eagerly as goods for sale. And in light of the international population in Pullman, claims to entirely authentic Chinese, Japanese, Korean, Hawaiian, Thai, Indian, Greek, Italian and Mexican food ring true.*

## B&L BICYCLES

Bikers will value B&L's Service Center, custom digital bike-fitting solutions, and the staff's expertise. They will also appreciate B&L's selection of electric and traditional bicycles from Trek, Electra, and Terratrike.

## A MODERN PLANTSMAN

A Modern Plantsman houses several breeds of plants, including tropical, with some grown in the shop just for you! This boutique plant shop, botany club, and workshop on Grand Avenue welcomes all.



## GRANDER GOODS

Grander Goods is a zero-waste, bulk foods apothecary on Pullman's Main Street, adjacent to It's PokeMan. Carrying oils, vinegars, teas and more, Grander Goods strives to make specialty items more available in the community.



## KURE & COMPANY BOUTIQUE

A fashion and lifestyle boutique catering to those who "love to live free, look good, and rock life with unique style," Kure & Company features local and exclusive collections of home goods and apparel.



## PALOUSE GAMES

Nestled in the heart of downtown Pullman, Palouse Games caters to all kinds of game enthusiasts. With a communal space set up with tables, get ready for a unique gaming experience where people can gather and enjoy.

## SAM DIAL JEWELERS

Local experts in custom designed jewelry and repair, Sam Dial Jewelers provides a quality selection of rings, necklaces, earrings, watches, and more! Whether you're looking for a high quality engagement ring or looking for luxurious styling, Sam Dial has what you need.

## SANCTUARY YOGA, BARRE, & DANCE

Sanctuary is a local Yoga, Barre, and Dance studio. They offer a full range of dance disciplines for all ages and levels, with instructors to teach dancing students different techniques and styles with a wide assortment of healthy food available, like smoothies, bowls, and more.

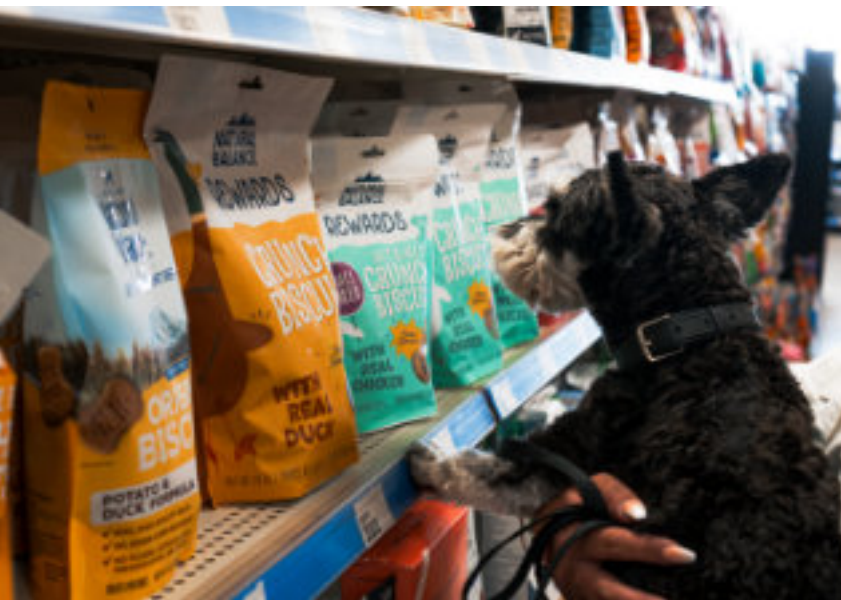




# SHOPS *around town*

## BRAIN BODY BALANCE ROCK SHOP

With a mission of "providing positive energy and space to those seeking wellness," Brain Body Balance offers only 100% natural rocks, carefully cleaned and skillfully processed and polished. Located on Bishop Boulevard.



## PETS ARE PEOPLE TOO

Looking for something for your favorite pet? Pets are People Too carries an assortment of pet food, treats, and all things pet-related. The store even supplies a self-service dog wash.

Photography By: Pullman Marketing



Moscour & Pullman Building Supply



Moscour & Pullman Building Supply

## PULLMAN BUILDING SUPPLY

Pullman Building Supply is a hardware store and so much more. This longtime Pullman establishment stocks a multitude of items and is devoted to old-fashioned customer service and expert help.

## CRIMSON & GRAY

Crimson & Gray features products devoted to WSU and the Cougars. Carrying high quality clothing including shirts, hats, and other Cougar gear, the shop also supplies WSU drinkware, auto accessories, and much more! Cougar fans will find gifts galore and new ways to exhibit their loyalties.



Pullman Marketing



Pullman Marketing



Pullman Marketing



**SHOP**  
*secondhand*



## BRUSED BOOKS

Brused Books on Main Street is a bibliophile's dream. Its shelves are filled to the brim with over 90,000 very well-organized used books. General and science fiction, romances and mysteries number in the thousands; nonfiction titles from pet care to metaphysics are innumerable. Brused books purchases some books for cash and/or store credit.

## DREGS

Seeking vintage items such as period pieces or vinyl records? Your search will be rewarded at DREGS. This spacious store carries a wide and intriguing variety of memorabilia, from books and videotapes to comics and clothes.



**GOYA VINTAGE**

Owned and managed by WSU students, this store carries vintage apparel from the 1970s through the early 2000s. Popular items include crewnecks, jackets, and vintage WSU gear.

## LILY BEE'S BOUTIQUE

Lily Bee's Boutique stocks a substantial collection of fashionable clothing including budget-friendly wedding gowns, designer jeans, unique jewelry, and retro attire. Fashion lovers will find a haven here. This family-owned boutique on Main Street offers visitors a delightful escape into an uncommon corner in the world of fashion.



## MICHELLE'S CLOSET

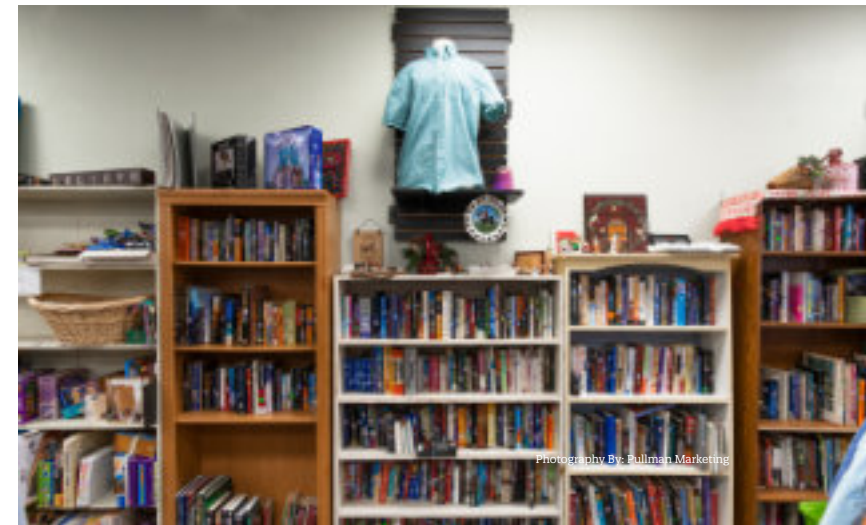
This inviting consignment shop began as a search for shoes and became a mission to the community. Laboring to offer quality clothing at a moderate price, Michelle's Closet prides itself in unique, high quality, sustainable merchandise.

## MONARCH BOUTIQUE

For vintage clothing, jewelry, and home décor, preloved and upcycled, visit Monarch Boutique. With a passionate love for and appreciation of fashion, the owner aspires to help patrons find and define their own, unique style.

## PALOUSE TREASURES THRIFT STORE

Customers will find almost anything they want or need at Palouse Treasures. With two stories of second-hand merchandise, bargain hunters will not be disappointed.





# THE NATIONAL *Lentil* *Festival*

Photography By: Recraft Creative

## LENTIL FEST HISTORY

Here in Eastern Washington and Northern Idaho, the Palouse Region grows a quarter of all lentils in the United States!

The National Lentil Festival began when a small group of Pullman community members looked for a creative way to promote the region's thriving lentil industry. The first National Lentil Festival was held in 1990 and began as a one-day event featuring lentil-themed food, cooking demonstrations, and a parade, attracting lentil enthusiasts and many curious locals.

Over the next decade and into the early 2000s, the National Lentil Festival grew in popularity, drawing visitors from neighboring towns and states and eventually from across the country. As the festival ventured to incorporate new features such as live music performances, family-friendly entertainment, and lentil-inspired cuisine from a diversity of vendors, it continued to involve local businesses and the community.

In the 2010s, the National Lentil Festival lived up to its name, earning recognition as one of the premier food festivals in the United States. The event's reputation has continued to grow, attracting renowned chefs, musicians, and celebrities.



## LENTIL FUN FACT

The National Lentil Festival began as a float in Pullman's 4th of July parade! The idea of celebrating lentils gained so much attention that it evolved into the festival it is today.



Photography By: Recraft Creative



## LENTIL FEST TODAY

The National Lentil Festival has become a beloved annual tradition here in Pullman and the surrounding region, typically spanning two days and including cooking competitions, fun runs, live performances and a grand parade!

The festival's commitment to promoting lentil-based cuisine and the region's agricultural heritage is stronger than ever, and the event continues to be a great way for Pullman to come together as a community of families, students, artists, and business owners.

With continued involvement from WSU, local businesses, and community members, the National Lentil Festival has evolved from a small community celebration into a nationally recognized event that celebrates lentils, community and the vibrant culture of the Palouse.



## LENTIL FUN FACT

In Ancient Rome, Lentils were not only a staple food but an ingredient in cosmetics. Wealthy Roman women would use lentils to make a facial mask, believing it would keep their skin looking fresh and youthful.

Photography By: Recraft Creative

Photography By: Recraft Creative







# STAY *awhile*

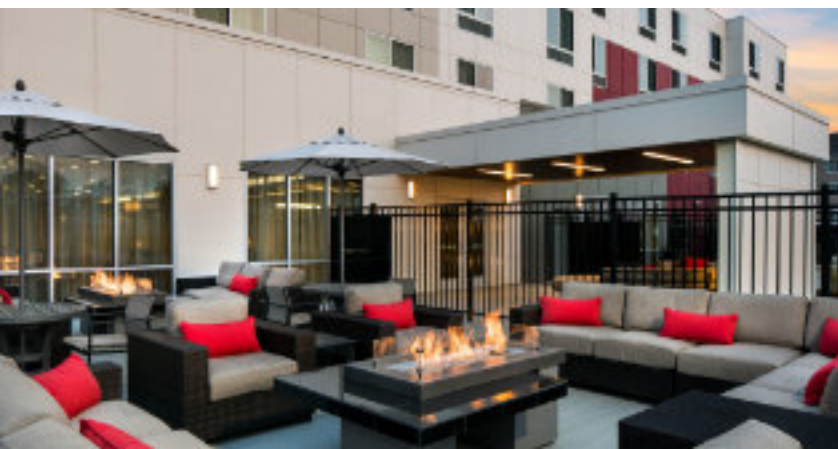


## AMERICAN TRAVEL INN

Immediately adjacent to the Old European restaurant and very close to downtown Pullman, the American Travel Inn provides 24-hour reception, express check-in and checkout, and a ticket service and tour desk. With a short drive to WSU, campus destinations are within easy reach.

## COAST HILLTOP INN

The Coast Hilltop Inn is visible upon entering Pullman and boasts panoramic views from either side. Featuring rooms and suites with plush bedding, a heated indoor pool, a complimentary continental breakfast and a lounge, the hotel also offers free shuttle service to and from the Pullman Airport as well as free access to Anytime Fitness in Pullman.



## COUGAR LAND MOTEL

This cozy, welcoming, dog-friendly motel is centrally located in downtown Pullman and a short distance from WSU. More than a dozen restaurants are within walking distance.

## COURTYARD BY MARRIOTT

Guests at the Courtyard may find little desire to go elsewhere during their stay. Fine dining at the Bistro, a whirlpool, pool, and fitness center, inviting spaces to work or relax, and GoBoard technology providing news, weather, and airport conditions are all available on-site.

Photography By: Courtyard By Marriott

## HOLIDAY INN EXPRESS & SUITES

Located a short distance from WSU, the pet-friendly and popular Holiday Inn Express & Suites features a complimentary airport shuttle, a free hot breakfast, an indoor pool and fitness center, and spacious rooms with comfortable bedding.

## HOTEL MCCOY

Hotel McCoy describes itself as "offering the warm hospitality of a cozy lodge and the modern amenities of a cosmopolitan art hotel." A few of their considerable amenities include a grilled cheese bistro and French press café, an art gallery, a cozy fire pit, a local beer and wine bar, and a gym & wellness room.



Pullman Marketing

## PULLMAN GARDEN INN

Just a stone's throw away from WSU, the Pullman Garden Inn has great views and is within walking distance from many favorite local restaurants.

## QUALITY INN PARADISE CREEK

Within walking distance of WSU and bordering the Chipman Trail, the Quality Inn delivers great value for the price. This pet-friendly hotel offers jacuzzi suites with separate sitting rooms, a complimentary hot breakfast, an indoor whirlpool and seasonal outdoor heated pool, a fitness center, and a free airport shuttle.

## RESIDENCE INN BY MARRIOTT

Visitors to Pullman will find the Residence Inn appealing for a number of reasons. Housing suites with separate living and sleeping areas and fully equipped kitchens, this pet-friendly hotel also provides complimentary grocery delivery service, a fitness center, and a free hot breakfast.





A photograph of a group of people in a meeting or conference. In the foreground, a person is seated, wearing a blue suit, and is writing on a clipboard with a silver pen. The person's hands are visible, and they are wearing a ring. The background shows other people seated in rows, slightly out of focus. The word "Connect" is overlaid in a large, white, cursive font across the middle of the image.

*Connect*



# MEETING *spaces*



*Event venues in Pullman span the gamut from elegant to casual and immense to intimate. From the Lewis Alumni Centre to Gladish Community Center and Airway Hills to Zeppoz, there is truly something for everyone.*

## AIRWAY HILLS GOLF CENTER

Airway Hills provides a remarkable variety of out-of-the-ordinary meeting spaces. Options include 5 acres of lawn space, indoor seating for up to 275, a large indoor space with access to golf simulators, and an outdoor deck with mini-golf access.

## BEASLEY PERFORMING ARTS COLISEUM

Located on the WSU campus, Beasley Coliseum boasts more than 12,000 seats and host large-scale events including WSU's commencement ceremonies and concerts. Friel Court in the Coliseum is home to the WSU Cougar Basketball team.

## BRELSFORD WSU VISITOR CENTER

The Center offers a 2000-square foot event space and an on-site catering kitchen as well as selected equipment and furnishings.

## COAST HILLTOP INN

Featuring modern technology and flexible setups, The Coast Hilltop offers a 1400 square-foot venue that is naturally lighted and easily customizable for large and small groups.



Pullman Marketing

## COURTYARD BY MARRIOTT

With a versatile event space, extensive AV equipment, staff expertise, and catering, the Courtyard is equipped to handle a variety of needs.

## ELSON S. FLOYD CULTURAL CENTER

The Elson S. Floyd Cultural Center is available to WSU departments and student organizations. Event spaces include a customizable "Living Room" and individual, smaller "Knowledge Rooms" with seating for up to 40.

## GLADISH COMMUNITY AND CULTURAL CENTER

Possessing an atmosphere appealingly local, the Gladish Center's most popular venues are their 3300 square-foot View Room, showcasing city and campus views, and the 10,000 square-foot gymnasium, available on Saturdays.

## HOLIDAY INN EXPRESS

Welcoming all to consider its 1200-square-foot venue that can be divided into two meeting rooms, the Holiday Inn supplies audiovisual support as well as equipment, and will cater breakfast upon request.

## LEWIS ALUMNI CENTRE

The exquisitely renovated 24,000-square-foot Lewis Alumni Centre offers exclusive indoor and outdoor event spaces, from the entire building to the Reception Gallery and Fireplace. AV equipment specific to the Centre, furnishings, and other amenities are also offered.

## QUALITY INN PARADISE CREEK

Located within walking distance of WSU, the Quality Inn will customize their meeting rooms to accommodate a variety of needs.



Courtyard By Marriott

## RESIDENCE INN PULLMAN

The Residence Inn offers 1,863 square feet of meeting space and breakout rooms accommodating up to 90 people. The hotel also offers a variety of AV and event equipment, catering, and the services of an on-site event planner.

## THE PAVILION AT ROUND TOP PUBLIC HOUSE

Boasting unforgettable views, The Pavilion houses space for 175 and a design team to make the space "feel like home." Also supplied are AV equipment, furnishings, and an on-site coordinator for the day of the event.

## WSU COMPTON UNION BUILDING

Event spaces within WSU's Compton Union Building (CUB) include everything from the M.G. Carey Senior Ballroom, seating 1000, to small meeting rooms holding fewer than 50 people. Basic audiovisual equipment and furnishings are also available when needed.

## ZEPPUZ EVENT CENTER

For those seeking a venue for parties, fundraising events, and more, Zeppoz provides an interactive setting, party supplies, and a staff that offers significant help.



THANK YOU FOR VISITING

*Pullman*

