

NEW PRODUCT UPDATE

June 2025



CONTENTS



Activities	01
Accommodation	02
Food and Drink	03
Your Queenstown Trade Team	04

ACTIVITIES

An aerial photograph of a river flowing through a deep, rocky canyon. The water is a vibrant turquoise color, revealing the riverbed and surrounding rocks. Three red inflatable rafts are positioned at different points along the river. The canyon walls are steep and covered with dense green vegetation, including trees and shrubs. The overall scene conveys a sense of adventure and outdoor recreation in a natural setting.

Queenstown
NEW ZEALAND

ONSEN HOT POOLS



Onsen Hot Pools Expansion

- Onsen Hot Pools is expanding, with new facilities launching in Winter 2025.
- Two Tri-Ritual Experiences will offer hot and cold immersion for healing and stress relief.
- Four new Day Spa suites will provide premium relaxation.
- A serene guest lounge will offer a quiet space to unwind.
- Upgraded changing areas will include hair and makeup stations.
- The expansion will elevate the overall luxury and wellness experience.

AJ HACKETT KAWARAU SWING



- Opening: Kawarau Swing launches August 2025
- Location: Kawarau Bungy Centre, Queenstown – the ‘World Home of Bungy’
- Swing details: 43-metre, three-person capacity
- Target audience: FIT travelers and groups seeking adrenaline-filled activities

ART ADVENTURES



- Tour options: Full-day or half-day guided art tours
- Location: Queenstown Lakes Region
- Personal art tutoring
- Outdoor sketching and painting in nature
- Tour types: Private or group options available
- Client flexibility: Choose from a range of beautiful locations
- Ideal for: Creative traveler's seeking a hands-on, immersive art experience

ASTON MARTIN TOURING



The F1 Experience in the AMR23 Edition DBX707

- Tribute to Aston Martin's F1® team and official medical car
- Luxury touring option for couples, families, weddings, or small groups
- Explore Queenstown and the Southern Lakes in style
- Highlights: Unmatched presence, performance, and precision
- Capacity: Seats up to four passengers

ALPINE LUXURY TOURS



Paradise Wilderness Experience

- Experience includes:
- Private scenic helicopter flight
- Guided wilderness hike
- Jet boat adventure on the Dart River
- Gourmet lunch in a stunning natural setting
- Location: Mt Aspiring National Park
- Highlights: Earnslaw Burn, Dart River, and dramatic alpine landscapes
- Perfect for: Nature lovers seeking a premium, adventure-filled day trip

SOUTHERN DISCOVERIES



Te Anau Farm Tour & Cruise.

- Te Anau farm experience (1 hour)
- Sheep shearing demonstration
- Working dog demonstration
- Morning tea included
- Milford Sound Nature Cruise (2 hours)
- Scenic landscapes and wildlife viewing
- Departure options: From Queenstown or Te Anau
- Self-drive option available

HELI GLENORCHY



Pure Fiordland Experience with Heli Glenorchy.

- Exclusive helicopter journey through Fiordland National Park.
- Aerial views of Milford Sound, Lake Quill, and Sutherland Falls.
- Rare landings at a remote glacier and Earnslaw Burn.
- Crowd-free adventure for nature lovers and thrill-seekers.

NGAI TAHU TOURISM



Ngai Tahu Tourism and Hollyford Wilderness Experience introduce the new **Waitai Lodge Fiordland Escape**.

- Two day, one night experience.
- Departing from Queenstown.
- Helicopter flight to the Waitai Lodge.
- Activities include guided walks, Māori history and fine dining with local drinks.
- Scenic helicopter flight out and lunch aboard the Fiordland Jewel before returning to Queenstown.

SOUTHERN DISCOVERIES



Southern Discoveries Wine Tours.

- 5-hour experience, daily 10am departures from Queenstown.
- Small, sophisticated wine tour for enthusiasts.
- Visit 4 Gibbston Valley vineyards.
- Travel in a Mercedes Sprinter with WiFi.
- Light platter included.
- Discover Pinot Noir and other varietals.
- Relaxed pace with pre-arranged winery bookings.

NZONE SKYDIVING



NZONE Skydive has introduced their new product, the NZONE Private Charter.

- Designed for high-end clientele, VIPs and exclusive groups.
- Offers a premium adventure with personalised service.
- Experience includes a dedicated host, private waiting room, an exclusive skydive plane.
- Tandem skydiving experience.

OVER THE TOP HELICOPTERS



Hands-On Conservation
Journey Back in Time with
Southern Lakes Sanctuary
& Over The Top.

- Half-day helicopter trip to Out the Back, New Zealand's smallest high-country station.
- Experience conservation efforts to protect wildlife like rock wren/pīwauwau and kea.
- Support native species reintroduction through Southern Lakes Sanctuary's initiatives.
- Eco-conscious adventure for nature lovers.

SOUTHERN DISCOVERIES



Southern Discoveries have introduced a new combo product called the Milford Sound Cruise & Milford Soundtrack.

- Two unique experiences in one, a scenic cruise followed by a walk on the Milford Track or vice versa
- 10-minute boat ride, up to four hours on the track and a 2-hour cruise.
- Includes free tea and coffee. Lunch available to purchase.

ROYALBURN FARM TOUR



Alpine Luxury Tours has launched their latest product, The Rustic & Robust Royalburn Farm Tour.

- Authentic New Zealand farm experience.
- Private Farm, Lunch & wine experience at Royalburn Station.
- 5-hour experience
- Includes transfers
- October – April

TOTALLY TOURISM- FLY/CRUISE/HELI



Totally tourism has introduced a new product, the Fly-Cruise-Heli

- Includes a scenic flight down to Milford Sound
- 2-hour cruise around Milford Sound with Mitre Peak cruises
- Scenic Helicopter flight and one alpine landing.

CHEEKY KIWI



Cheeky Kiwi's New Service: Queenstown to Franz Josef

- Daily departures from Queenstown to Franz Josef and Christchurch (since 1 November).
- Convenient travel between Queenstown, Franz Josef, and Christchurch.
- Seamless connections for travellers to explore New Zealand's stunning landscapes.

EVOLVE RENTALS



Evolve Rentals: Seamless Car Rentals in Queenstown.

- Top-quality vehicles with door-to-door delivery.
- Focus on personalised service and transparent pricing.
- Local insights to enhance your Queenstown adventure.
- Hassle-free journeys for every customer.

NOMAD SAFARI – FULL DAY MACETOWN



Starting October 1st,
Nomad Safaris Macetown
tour will become a full day
experience.

- Tour includes a visit to Arrowtown Museum.
- Thrilling river crossings
- A walk to Homeward Bound and Stamper Battery.
- Lunch Included
- Concluding 5/5.30pm.

LATITUDE 45 – LUXURY WINE TOURS



Latitude 45 is Queenstown newest Wine Tour Company.

- Offering curated and bespoke wine tours around the Central Otago region.
- Immersive experience
- Small private group tours from 1-6 passengers.
- Luxury Transport
- Genuine Local Insight
- Exclusive access to hidden gems
- Established Vineyard Relationships

ALPINE LUXURY TOURS



Alpine luxury Tours has introduced their Central Otago Adrenaline Aroma Tour.

- Full day tour
- Featuring three activity experiences, Oxbow Adventure Co, Highlands Motorsport Park Go-Karts & The Porsche Taycan Experience.
- Three course lunch & wine tasting included.

ALPINE LUXURY TOURS



Alpine luxury Tours has introduced **The Fiordland Highlights Tour**.

- Full day tour with overnight option
- Private Luxury Transport and driver
- Jetboat Tour
- Farm Tour & Refreshments
- Optional lunch & private Milford Sound Tour

ALPINE LUXURY TOURS – HELI WINE TOUR



Alpine luxury Tours has partnered with Mora Wines to offer an exclusive Heli Wine Tour in Central Otago.

- Includes Private driver, wine tastings, Platter Lunch & Helicopter return flight.
- Available all year round.
- Time is upon request.
- 3-hour duration.

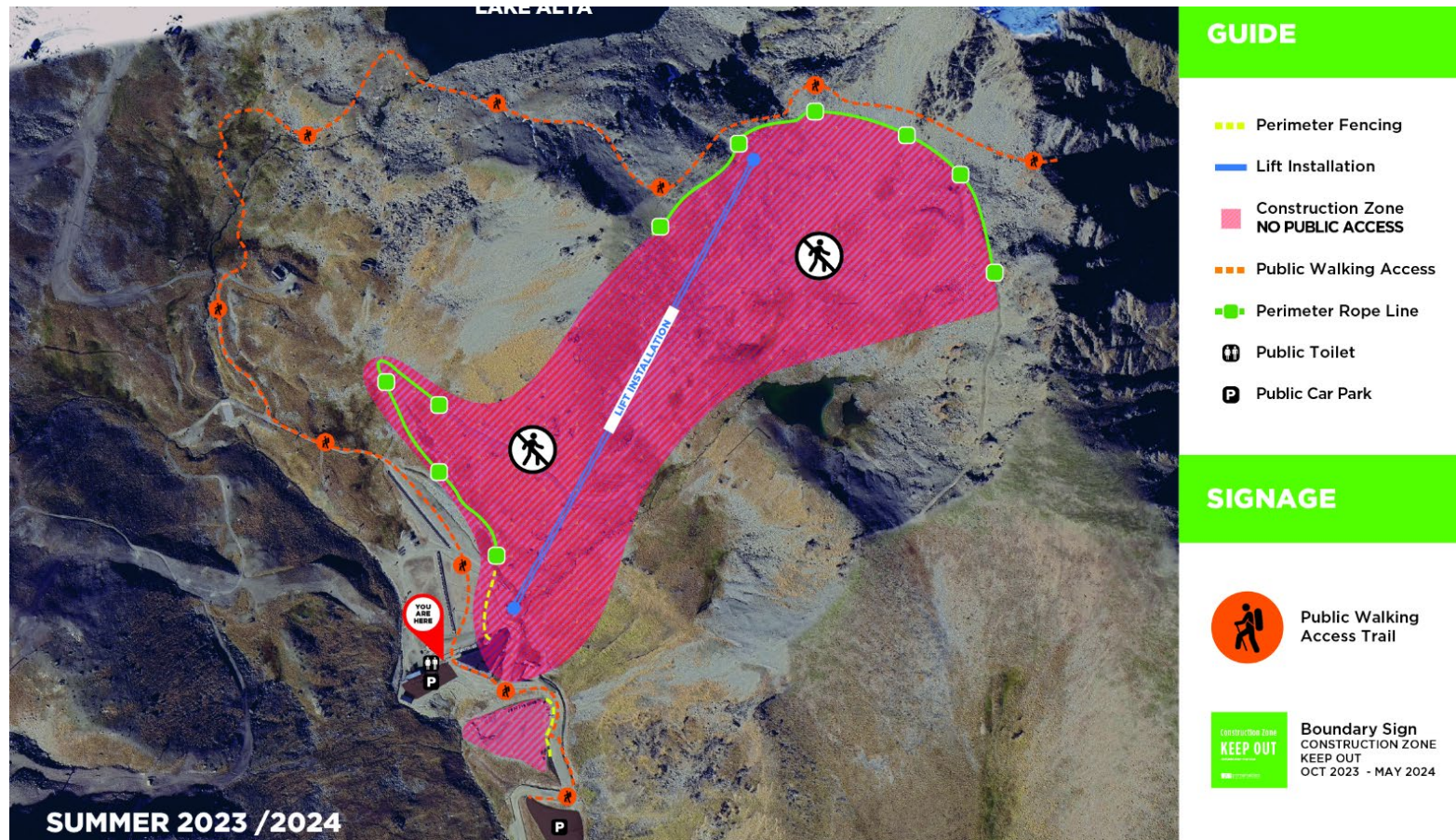
ALTITUDE TOURS & REAL NZ



Altitude Tours and RealNZ have collaborated to release their latest product, 'Milford Business Class'.

- Redefining the Milford Sound Experience
- Curated Service featuring, unapparelled comfort, including seating, amenities.
- VIP Experience
- Launching October 2025

REMARKABLES SKI FIELD



New for the 2024 season was the Remarkable's Ski Field - Shadow Basin.

- Twice as fast as the original chairlift.
- Will open nearly 50% more accessible terrain.

CARDRONA – SOHO BASIN



Soho Basin is under development up Cardrona Skifield, taking the resort from 465ha to 615ha.

- Opening Winter 2025.
- Will make Cardrona the biggest commercial ski field in New Zealand
- Adding 24% of skiable terrain overall to the resort.

APPELLATION WINE TOURS– EV’S



Appellation Wine Tours have introduced Electric Vehicles to their transport Fleet.

- Two Electric ford vans.
- 12 Seats in Each van.
- Reduction in carbon footprint.
- Environmentally-conscious Tourism.

GLENORCHY AIR X STEWART ISLAND



Stewart Island day trip.

- Scenic flight to/from ZQN (9am).
- Full day guided experiences – Stewart Island Village & Bays Tours with & Ulva Island Explorer with RealNZ.
- Lunch included.

GLENORCHY AIR



Private Flight and VIP Cruise.

- Private transfer from accommodation.
- Personalized scenic flight.
- Exclusive use of Southern Discoveries VIP area with private outdoor viewing deck.
- Arrival drink – beer/bubbles. High-tea.

HELIWORKS – MILFORD SOUND EXPLORER



Heliworks have introduced a new product, the Milford Sound Explorer.

- Exclusive Landing at Earnslaw Burn.
- Beat the crowds with a birds eye view of the Iconic Milford Sound.
- Journey Through the Hollyford Valley.
- Passing Numerous Alpine lakes & waterfalls.

ACCOMMODATION



Queenstown
NEW ZEALAND

ROKI COLLECTION



ROKI Collection Queenstown is an ultra-luxury, boutique hotel coming to the lakefront of downtown Queenstown.

- 15-minute drive to Queenstown international airport
- Close to Queenstown iconic landmarks such as Skyline Gondola, Botanical Gardens and the Steamer Wharf, home of the TSS Earnslaw.
- Onsite fine dining restaurant.
- Library Bar.
- Spa & Gym onsite.
- Offering suites, Deluxe Suites, 1-2-3-4 Bedroom suites.

ARO HA LUXURY WELLNESS RETREAT



Aro Ha is a luxury eco wellness retreat, located just 40 minutes from Queenstown, offering transformative wellness programs.

- All inclusive experiences with daily massages, yoga, plant-based meals, hiking, sauna, and eco friendly accommodation.
- Suitable for all levels.
- Commission details: retreat@aro-ha.com.

MAJOR DOMO



Major Domo have developed a new offering for their properties, The Exclusive Upgrades Product.

- Includes, personal meet & greet on arrival
- Welcome cheese platter with local wine
- Locally sourced breakfast provisions replenished every second day
- Daily servicing
- This product is exclusive to Trade.

SUDIMA FIVE MILE



Located in Frankton, close to airport and in the Five Mile retail precinct.

- 15 minutes drive from Queenstown
- 120 rooms
- 4.5 star
- Free parking
- Restaurant & Bar on site
- Bike & ski storage

MILLENIUM HOTEL



Full room refurbishment is now complete as of April 2024.

- 220 rooms and suites
- Short walk from town center
- Meetings facilities
- Qualmark Silver 4+ star

SCENIC SUITES HOTEL



Scenic Suites hotel has undergone a refurbishment.

The guest rooms, consisting of studios and 1-bedroom suites (which can be combined to create two-bedroom suites) have had a full refurbishment, with a fresh new look and design inspired by beauty and drama of the Central Otago region.

The onsite restaurant and bar has also undergone some updates.

KINLOCH WILDERNESS RETREAT



Kinloch Wilderness Retreat has upgraded its self-catering are and introduced a new accommodation, their Ecoscapes .

- Aim to offer a more immersive stay, combining luxury with natural beauty.
- Embracing comfort and the environment.
- Passive 'Low energy' cabins.

EAT AND DRINK



Queenstown
NEW ZEALAND

SWIFTSURE



- Swiftsure is a new bistro in Arrowtown from the team behind Waiheke's Man O' War Vineyards.
- Set beside Buckingham Green, it offers relaxed, stylish indoor-outdoor dining year-round.
- The menu features seasonal dishes, family-friendly options, and wines from Waiheke to Bannockburn.
- Guests can enjoy alpine views, sunny summer days, or a cozy fireside in winter.
- Swiftsure is quickly becoming a new local favourite.

AYRBURN – BILLY’S



- Ayrburn introduces Billy’s, a modern Chinese restaurant opening July 2025.
- The restaurant is set in the restored original homestead of Ayrburn founders William and Bessie Paterson.
- Billy’s combines rich heritage with bold interiors and indulgent cuisine.
- Guests can enjoy year-round dining in a bespoke glass conservatory.
- Located just 20 minutes from Queenstown, near historic Arrowtown.

THE BOATSHED BAKERY



The Boat Shed Bakery has recently opened on Frankton Marina.

- Traditional Methods & Seasonal Ingredients: Ensuring high-quality, authentic flavors.
- Hand-Crafted Pastries: Made with care and expertise.
- Freshly Baked Breads: Warm, artisanal loaves daily.
- High-Quality Craft Coffee: Expertly brewed by skilled baristas.
- Delectable Ice Cream: Featuring Lewis Road Creamery's premium flavors.

Queenstown
NEW ZEALAND

THE IRISHMAN



The Irishman,
Queenstown's newest pub
and Wolf Hospitality
Groups latest addition.

- Located on the Steamer Wharf
- Offering a selection of Irish beers, ciders, whiskeys, and a menu featuring both Kiwi favorites and Irish classics.

THE BAKEHOUSE



Ayrburn's newest venue, The Bakehouse, has recently opened.

- First all-day dining venue at Ayrburn.
- Offering coffees, woodfire pizzas, Rotisserie Chickens, Baked breads.
- Casual setting.

SUNFIRE



Introducing Sunfire, Queenstown lakefronts newest restaurant. Sunfire is brought to you from the team behind the critically-acclaimed brother restaurant Flame Bar and Grill.

- Open for breakfast, lunch and dinner.
- Food seared and prepared over charcoal Josper oven.

FERGBUTCHER



The famous Fergburger has added another establishment to their belt, opening 'Fergbutcher' in Arrowtown. Selling not only cuts of meat but also takeaway food, with a menu that caters to breakfast, lunch and dinner offering non-fergburger burgers, sandwiches, grilled sausages, coffees and bakery goods.

TOAST & OAK



Toast & Oak, located on a historic Queenstown street, offers a European wine bar experience with a warm, inviting glow. Inside, you'll find a blend of rich textures and natural hues, capturing the cozy, energetic ambiance of Europe's intimate wine bars.

LOCAL QUEENSTOWN



After a big refurb and rebrand, Local Queenstown has opened on Rees Street. Located in the heart of town, Local offers elevated pub food alongside nightly events, live sports, with live music and DJs.

TOMMY'S MARGARITA BAR



Republic Hospitality Groups latest addition, Tommy's Margarita Bar has opened in the Queenstown Mall.

- Offering a selected of expert-crafted margaritas
- Central location
- Comfortable and modern lounge bar

FINO WINE BAR



Fino Wine Bar has now opened at Queenstown Marina.

- 10-minute drive from Queenstown town Centre
- Feature a wide range of local and New Zealand wines and handcrafted food

SUNDAY'S EATERY



Inspired by the intimate neighborhood restaurants of Europe and the laid-back feeling of everyone's favorite day of the week, SUNDAYS is a character filled eatery and drink(ery) in a stunning restored church building from 1933.

- Neapolitan-style pizzas are the hero of the wood-fired menu.

AYRBURN



Ayrburn: The New Dining Destination in Arrowtown

- Located in Arrowtown, surrounded by 15 hectares of planted vines
- 40 hectares of accessible land, featuring trails, a waterfall, and opportunities for commercial development
- Six dining venues, with more coming soon.
- Convenient transport available to and from the precinct

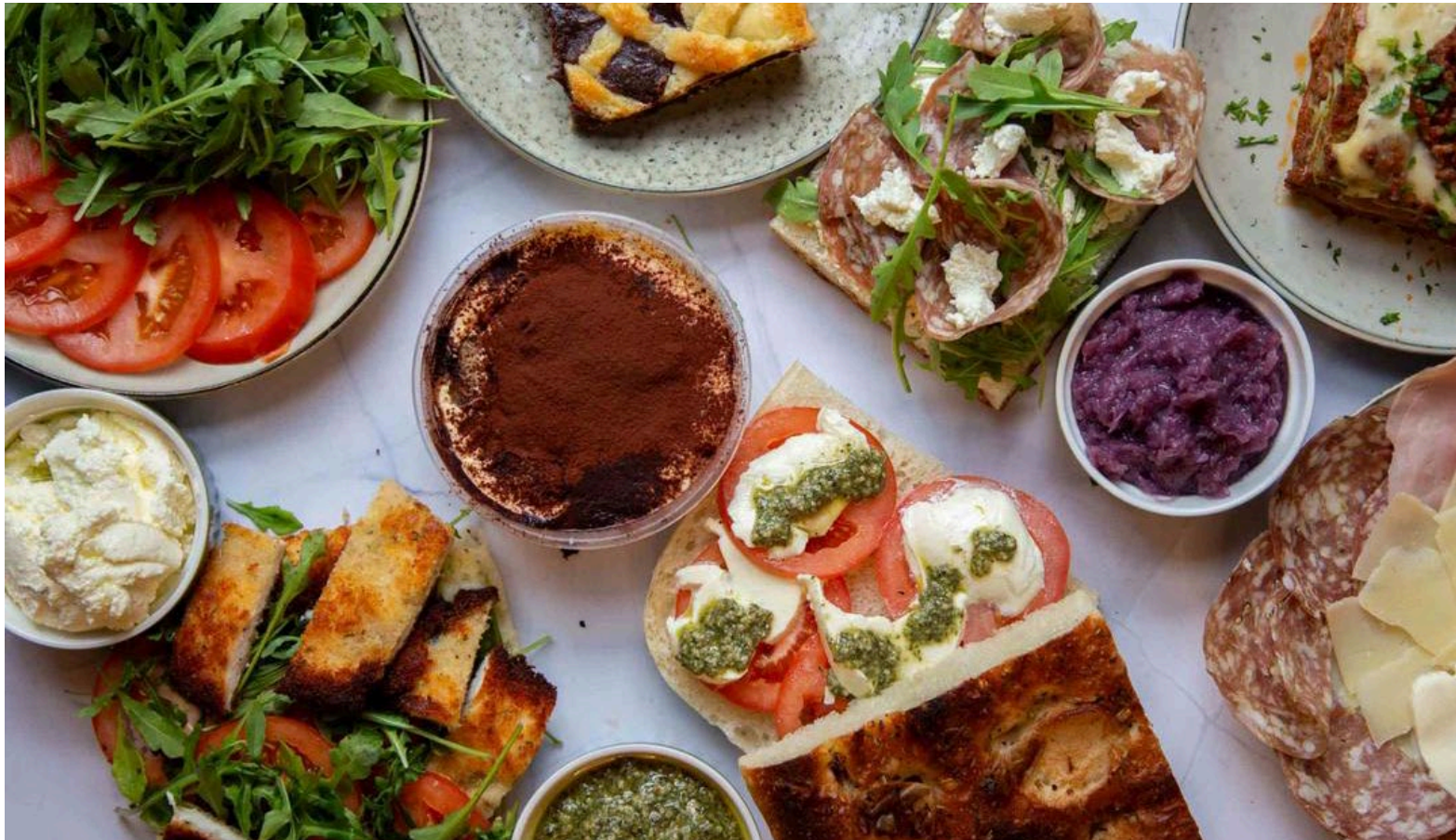
SODA



Soda located on Queenstown Bay. Offering full flavoured dishes with modern interpretations of Mediterranean-inspired cuisine.

- Choice of seating options – lakefront alfresco, Rees Street covered balcony, or inside main restaurant
- Tapas sharing style

PRONTO BY GIOVI'S



Queenstown's Giovi's, the local Italian restaurant chain has opened a new venue called 'Pronto'.

- 'Italian to go' style food.
- Focaccia sandwiches, Lasagne, Gnocchi and Dolce.
- Located central Queenstown on Searle Lane .

MISS RITAS CATINA



Miss Rita's Catina is the newest restaurant by Future Hospitality Group.

- Located in the Upper Village Precinct.
- Go-to Tex Mex on Brecon Street.
- Flavour packed menu.
- Sharing style.

BAJA



Located in the Queenstown Bay.

Blends flavours of Mexico with the best of New Zealand produce with a dash of Californian style

CAVE



Located in Arrowtown –
Buckingham Street.

Authentic flavours of
Japanese cuisine.

- Sake & tapas
- Sharing style menu



YOUR QUEENSTOWN TRADE TEAM

When it comes to selling Queenstown, NZ to the world, the DQ Travel Trade team know the importance of understanding the destination so that you can build itineraries confidently and dream weave travel experiences that are tailored to your business and client's specific needs.



Queenstown
NEW ZEALAND