

Archdale & Trinity Area Attractions:



Adaumont Farm - Trinity

Adaumont Farm is a luxurious private country estate offering the idyllic setting for memorable occasions including meetings, weddings, family reunions, or other special events. With nearly 400 sprawling acres of golden pastures overlooking a beautiful lake, this farm delivers the consummate breathtaking backdrop for your special day! For more information and directions, call 336-906-2232 or go to www.AdaumontFarm.com



Creekside Park and 18-Hole Championship Disc Golf Course - Archdale

This 107-acre park offers a variety of active, as well as passive, recreational opportunities. Amenities include tennis courts, baseball/softball/t-ball fields, picnic shelters, playgrounds, 18-hole championship disc golf course with beginners loop, recreation center, orienteering course, electric car charging station, and three miles of walking trails along Muddy Creek. For more information and directions, call 336-431-1117 or go to www.ArchdaleParks.com



Davis Ranch Arena / Rodeo - Archdale

The largest outdoor bull riding facility on the east coast is where 1995 World Champion Bull Riding Champion, Jerome Davis, calls home and where the longest running outdoor PBR event in the nation is held every Labor Day weekend. Also in September, the ranch hosts the largest one-day Junior Rodeo in the world. Davis Ranch holds many other events throughout the year as well. For more information, directions and schedule of events, call 336-861-7673 or go to www.JeromeDavis.com



High Point Rockers Baseball - High Point and HiToms Baseball at Finch Field - Thomasville

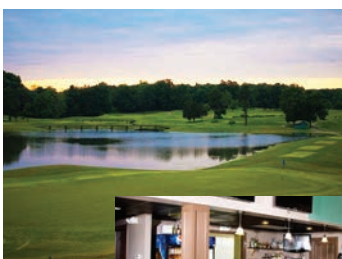
Are you a fan of baseball? Check out the High Point Rockers, an Atlantic League Professional Baseball team and the High Point-Thomasville HiToms, part of the Coastal Plain League, a wood-bat collegiate summer league at Finch Field in Thomasville. For more info on the High Point Rockers, call 336-888-1000 or go to www.HighPointRockers.com; for more information on the HiToms, call 336-472-8667 or go to HiToms.com



High Point University - High Point

High Point University is a private liberal arts university affiliated with the United Methodist Church. Located at 833 Montlieu Avenue, High Point, it is just

six miles from Archdale. For assistance with lodging and accommodations, call 800-626-2672. For more information and directions to the University, call 800-345-6993, or go to www.HighPoint.edu



Holly Ridge Golf Links & Grill - Archdale

Located just minutes from High Point and Greensboro, this premier public golf course leads the way in challenging, affordable golf in the Piedmont Triad. Not only is Holly Ridge one of the areas finest 18 hole courses, but it drips Southern hospitality all the way to the bar and grill where you are sure to be spoiled by their delicious menu. For more information and directions to the course, call 336-861-4653, or go to www.HollyRidgeGolfLinks.com



International Home Furnishings Market - High Point

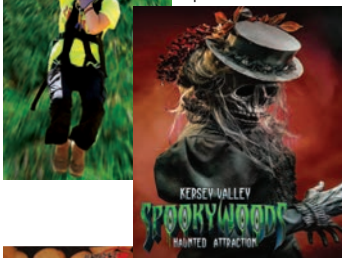
The High Point Furniture Market is the largest home furnishings industry trade show in the world! Stay in Archdale at one of six premier properties during your visit, located just four miles from the market center. For assistance with

lodging and accommodations in the Archdale area, call 800-626-2672. For additional information, go to www.HeartofNorthCarolina.com

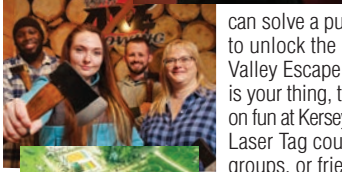


Kersey Valley Attractions - Archdale

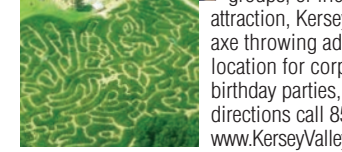
Numerous attractions make up Kersey Valley, offering something for everyone! Visitors can fly at Kersey Valley Zipline enjoying spectacular views from above at the nation's only aviation-themed



and one of its largest closed-course zip lines. Experience the corn maze, jumping pillows, famous kettle corn, homemade fudge, and much more. Have a frightfully good time with the monsters at the nationally known Spookywoods Haunted Attraction. Experience a High Ropes Course for an acrobatic workout you'll never forget. Imagine being locked in a room with no way out until you



can solve a puzzle and find the key to unlock the popular Kersey Valley Escape Room. If laser tag is your thing, then set your sights on fun at Kersey Valley's indoor/outdoor Laser Tag course, fun for the entire family, groups, or friends. Also, don't forget to try their newest attraction, Kersey Valley Axe Throwing, an indoor/outdoor axe throwing adventure. Kersey Valley is also the perfect location for corporate events, team building exercises, birthday parties, and field trips. For more information and directions call 855-185-ZIPLINE or 336-431-1700 or go to www.KerseyValley.com



Linbrook Heritage Estate - Trinity



Historic Hoover House - Relive county farm life from 1905-1944 at the Historic Hoover House. Through guided tours, visitors will see the house and learn about the Hoovers and their daily lives. Lovingly restored to its original appearance, many of Edd Hoover's hand built tools and early farm equipment are on display.



Linbrook Hall - Tour one of the largest privately-owned homes in the southeastern United States with more than 60 rooms. Linbrook Hall is located on a hill in view of America's oldest mountain range, the Uwharrie Mountains, and contains architectural details found in many 18th century homes. See the Neal's personal collection of antiques from around the world beautifully displayed throughout.



Neal Agricultural and Industrial Museum - View rare John Deere® tractors and collectibles at this museum featuring Hi-Crop and orchard models, restored to like new condition and periodically operated in field demonstrations on Linbrook Heritage Estate. See a 1926 return tube boiler

used in conjunction with an 1890s steam engine to produce electrical power for other exhibits including an early 20th century sawmill and sugar cane mill. (No connection to Deere & Co is suggested or implied.) Gift shop on site.

For more information and directions on all three attractions, call 800-626-2672 or go to www.LinbrookHeritageEstate.com



Millikan Farms - Sophia

Look no further for the wedding venue of your dreams, located in the Heart of North Carolina. The venue is easily accessible from Greensboro, High Point, Winston-Salem, Asheboro, and all points in between. This authentic farm setting is rustic, yet elegant, allowing for small intimate and extravagant ceremonies alike including weddings, receptions, rehearsal dinners, or anniversary celebrations. For more information and directions call 336-549-5222 or go to www.MillikanFarms.com



My Father's House, Retreat & Farmette - Archdale

My Father's House is a beautiful, country mansion with oak floors and chandeliers featuring an elegant rustic barn, perfect for weddings and other events. It features large rooms with views of woodlands and nature. There are three bedrooms

on the 2nd Floor and one on the 1st Floor. The Silver Suite is 600 sq ft with ensuite. The French Room has a queen, canopy bed with adjacent bath. The Moon Room has two queen beds with assigned bath. The Spring Room is on the Main Floor with a fireplace. Guests may rent the entire house or individual rooms with key access to the main doors. Available for weddings. Event rates are additional to room rates and based on number of guests. Maximum occupancy is 100. For more information and directions call 339-781-4700



Zimmerman Vineyards - Trinity

Visit Zimmerman Vineyards, located on 140 acres at the foot of beautiful Mt. Shepherd. Featuring a rustic flagstone terrace and unique stone bar, it is nestled between six acres of vineyards with a panoramic view of the surrounding countryside; weekend tours and wine tastings available. For more information and directions call 800-626-2672 or go to www.ZimmermanVineyards.net

Other Attractions Near the Area:



North Carolina Zoo - Asheboro

The world's largest natural habitat wildlife park delivers fun with family and friends, face-to-face animal encounters, enchanting outdoor art, and glorious gardens. For more information and directions call 800-488-0444 or go to www.NCZoo.org



Randleman Lake & Marina - Randleman

Randleman Lake Reservoir is located on the Deep River, part of the Cape Fear River basin. For more information and directions, call 800-626-2672 or go to www.HeartofNorthCarolina.com



Petty Family Attractions - Randleman

Petty Museum - Race into this museum showcasing the careers of this four generation NASCAR Hall of Fame racing family including Lee, Richard, Maurice, Kyle and Adam Petty.

Petty's Garage - Plant your feet within the walls of the Petty Family compound where 10 NASCAR championships and more than 250 race wins began in 1949.

Toomes-Petty House - Tour the historic home of NASCAR Hall of Fame Inductee, Lee Petty, and birthplace of his NASCAR Hall of Fame sons, Richard and Maurice Petty. For more information and directions, call 336-495-1143 or go to www.RPMuseum.com



Victory Junction - Randleman

Feel your heart race at this NASCAR-themed children's camp. Welcome center and gift shop on site. For more information and directions call 877-VJG-CAMP or go to www.VictoryJunction.org



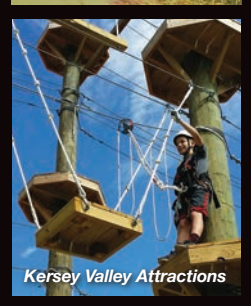
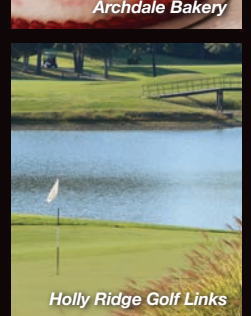
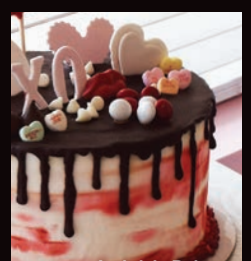
Calendar of Annual Events:

For a more info, visit HeartofNorthCarolina.com

- MARCH:**
 - Archdale & Trinity Chamber Junior Golf Open - Archdale
 - Archdale & Trinity Chamber Reverse Raffle
- APRIL:**
 - Creekside Easter Celebration - Archdale
 - International Home Furnishings Market - High Point
 - Sisyphus Saturday at Zimmerman Vineyards Summer Music Series - Trinity (April-October)
- MAY:**
 - Memorial Day Events
 - First Friday Movie at Creekside Park - Archdale (May-August)
 - Archdale & Trinity Chamber Membership Golf Tournament - Archdale
- JULY:**
 - Guil-Rand Fire Camp - Archdale
 - July 4th Celebration at Creekside Park - Archdale
- SEPTEMBER:**
 - 22nd Annual Jerome Davis PBR Invitational - Archdale
- OCTOBER:**
 - Steam Day at the Neal Agricultural and Industrial Museum - Trinity
 - Big Galute Food Truck Rodeo - Archdale
 - International Home Furnishings Market - High Point
 - October Friends of Trinity Car Show & Chili Cook Off - Trinity
- NOVEMBER:**
 - Archdale & Trinity Chamber Member Appreciation Golf Tournament - Archdale
- DECEMBER:**
 - Archdale Christmas Parade - Archdale
 - Christmas at Linbrook Hall - Trinity
 - December Friends of Trinity Present: Christmas in Trinity - Trinity

Archdale & Trinity, NORTH CAROLINA

Area Guide



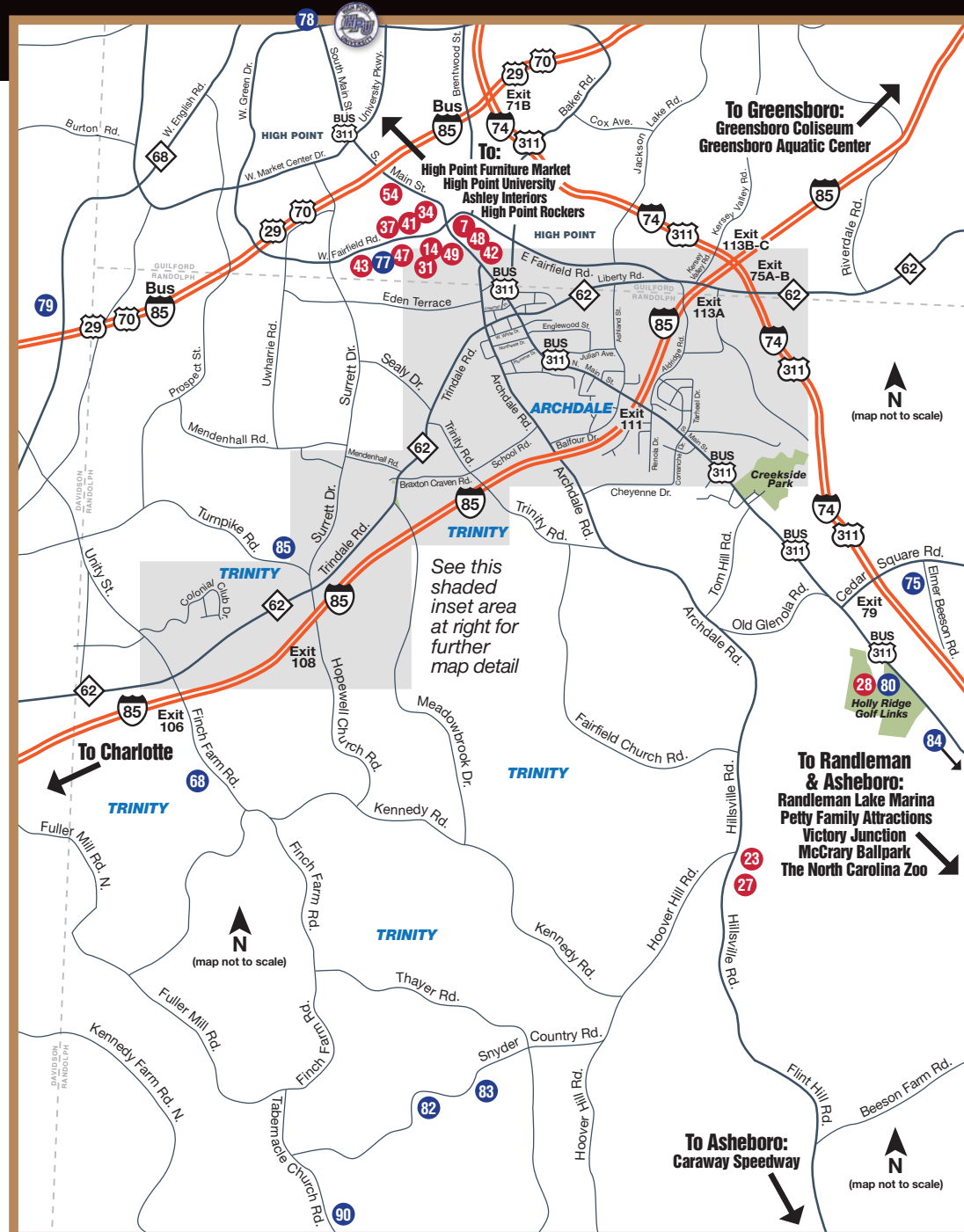
Where to Stay • Where to Eat • What to Do

Zimmerman Vineyards

Neal Agricultural and Industrial Museum

Archdale & Trinity, NC

Where to Stay | Where to Eat | What to Do



Accommodations

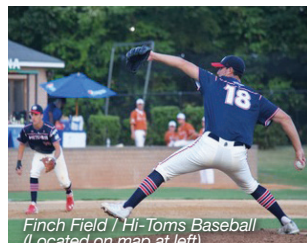
- 1** Country Inn & Suites - Archdale
10151 N Main St, Archdale 27263
336-861-2233 / 800-456-4000
- 2** Days Inn - Archdale
10002 S Main St, Archdale 27263
336-434-5151
- 3** Fairfield Inn & Suites - Archdale
10141 N Main St, Archdale 27263
336-434-0055 / 800-MARRIOTT
- 4** Hampton Inn - Archdale
10066 N Main St, Archdale 27263
336-434-5200 / 800-HAMPTON
- 5** Holiday Inn Express & Suites - Archdale
10050 N Main St, Archdale 27263
336-861-3310 / 800-HOLIDAY
- 6** Quality Inn - Archdale
10123 N Main St, Archdale 27263
336-434-4797 / 887-4-CHOICE

Dining

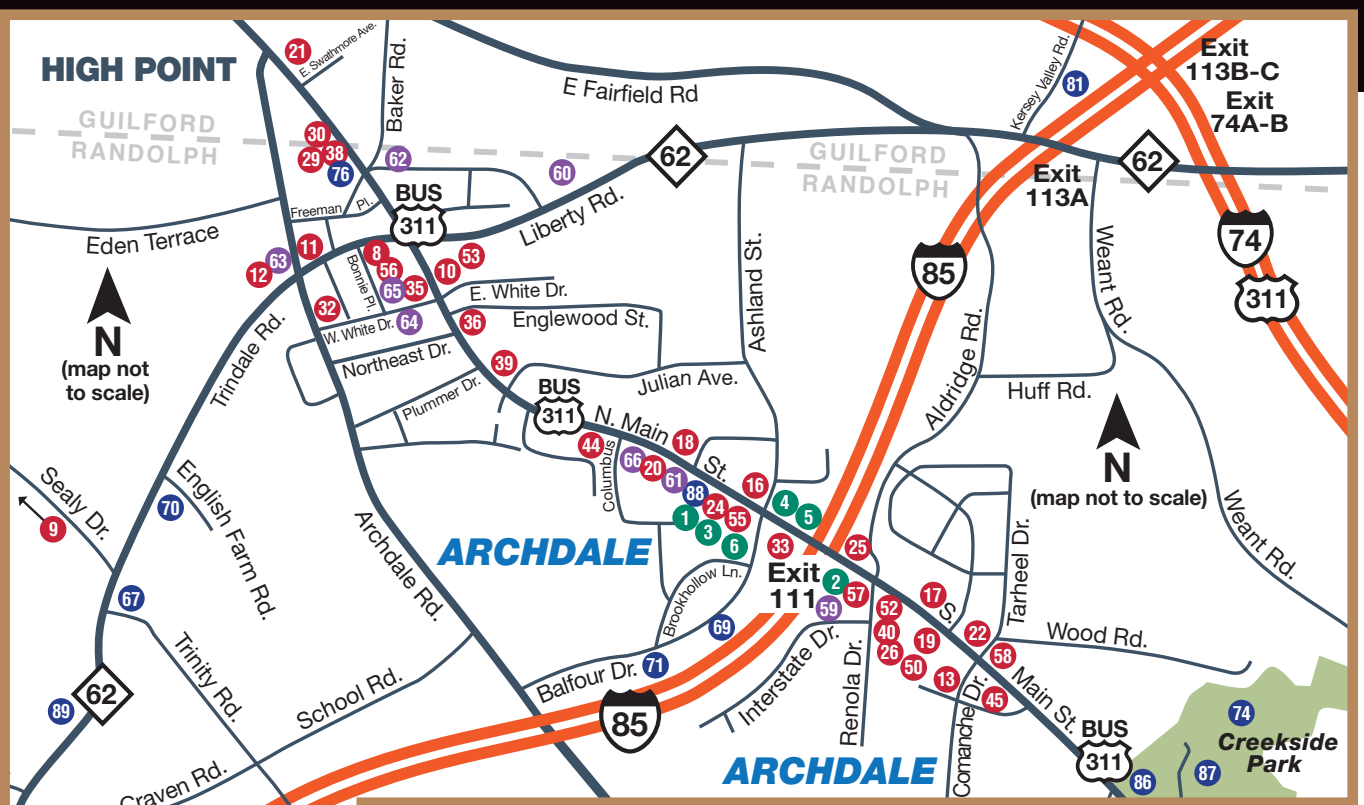
- 7** Arby's - High Point
(dot located on map at left)
2815 S Main St, High Point 27263
336-434-2200
- 8** Archdale Bakery - Archdale
101-D Bonnie Pl, Archdale 27263
336-431-7437
- 9** Archdale BBQ - Archdale
2601 Surret Dr, Archdale 27263
336-431-0194
- 10** Archdale Soda Shop - Archdale
11206 N Main St, Archdale 27263
336-434-5867
- 11** Archdale Subs - Archdale
3407 Archdale Rd, Archdale 27263
336-431-2212
- 12** Babycakes Gourmet - Archdale
304 Trindale Rd, Ste E, Archdale 27263
336-308-3120
- 13** Bamboo Garden - Archdale
10106-C S Main St, Archdale 27263
336-434-1888
- 14** BBQ Joe's - High Point
(dot located on map at left)
2822 S Main St, High Point 27263
336-434-4355
- 15** BBQ Joe's - Trinity
4873 NC Hwy 62, Trinity 27370
336-476-0474
- 16** Biscuitville - Archdale
10106 N Main St, Archdale 27263
336-861-6584
- 17** Bojangles - Archdale
10207 S Main St, Archdale 27263
336-431-1294
- 18** Cabo Grill - Archdale
10210 N Main St, Archdale 27263
336-803-4038
- 19** Carolina's Diner - Archdale
10102-W S Main St, Archdale 27263
336-434-4915
- 20** Chat 'N Chew - Archdale
10301 N Main St, Archdale 27263
336-861-0141
- 21** Cook Out - High Point
2923 S Main St, High Point 27263
336-431-3977
- 22** Dairi-O (coming soon)
201 Tarheel Dr, Archdale 27263
- 23** Domino's - Trinity
(dot located on map at left)
8532 Hillsville Rd, Trinity 27370
336-861-0990
- 24** GoGoYaki Japanese Grill - Archdale
10167 N Main St, Archdale 27263
336-434-7192
- 25** Hardee's - Archdale
10001 S Main St, Archdale 27263
336-434-4476
- 26** Hibachi Jr. Express - Archdale
10102-C S Main St, Archdale 27263
336-434-0186
- 27** Hillsville Cafe - Trinity
(dot located on map at left)
8520 Hillsville Rd, Trinity 27370
336-434-3663
- 28** Holly Ridge Bar & Grill - Archdale
(dot located on map at left)
7933 US Hwy 311 S, Archdale 27263
336-861-5050
- 29** Hops Vault - Archdale
11651 N Main St, Archdale 27263
336-803-4037
- 30** J Butler's Bar & Grille - High Point
3030 S Main St, High Point 27263
336-861-5758
- 31** La Hacienda - High Point
(dot located on map at left)
2826 S Main St, High Point 27263
336-434-4415
- 32** Mary B's Southern Kitchen - Archdale
3529 Archdale Rd, Archdale 27263
336-861-5964
- 33** McDonald's - Archdale
10057 N Main St, Archdale 27263
336-875-4184
- 34** McDonald's - High Point
(dot located on map at left)
2738 S Main St, Archdale 27263
336-887-6011
- 35** Nattie's Frozen Creations - Archdale
101-O Bonnie Pl, Archdale 27263
336-307-3484
- 36** Okinawa Restaurant - Archdale
10948 N Main St, Ste A, Archdale 27263
336-434-7170
- 37** Pancho Villa's Mexican - High Point
(dot located on map at left)
206 W Fairfield Rd, High Point 27263
336-861-4893
- 38** Papa John's - Archdale
11651 N Main St, Archdale 27263
336-434-0004
- 39** Pioneer Family Restaurant & Steak House - Archdale
10914 N Main St, Archdale 27263
336-861-6247
- 40** Pizza Hut - Archdale
10102 S Main St, Archdale 27263
336-861-1220
- 41** Pizza Inn - High Point
(dot located on map at left)
110 W Fairfield Rd, High Point 27263
336-434-2138
- 42** Pizza VINO - High Point
(dot located on map at left)
2839 S Main St, High Point 27263
336-431-8187
- 43** Pizza Wing King - High Point
(dot located on map at left)
411 Fairfield Rd, High Point 27263
336-401-0064
- 44** Rancho Family Restaurant - Archdale
10463 N Main St, Archdale 27263
336-861-5590
- 45** Sheetz - Archdale
10206 S Main St, Archdale 27263
336-431-0613
- 46** Sheetz - Trinity
5905 Finch Farm Rd, Trinity 27370
336-476-0128
- 47** Sidelines Sports Grill - High Point
(dot located on map at left)
309 W Fairfield Rd, High Point 27263
336-434-8605
- 48** Sir Pizza - High Point
(dot located on map at left)
2833 S Main St, High Point 27263
336-861-4281
- 49** Spiro's Family Style Restaurant - High Point
(dot located on map at left)
2814 S Main St, High Point 27263
336-883-1390
- 50** Subway - Archdale
10102 S Main St, Ste N, Archdale 27263
336-431-7890
- 51** Subway - Thomasville
6309 Unity St, Thomasville 27360
336-472-0027
- 52** Taco Bell - Archdale
10102 S Main St, Archdale 27263
336-861-1220
- 53** The Dugout - Archdale
11246 N Main St, Archdale 27263
336-861-0894
- 54** The Peppermill Café - Archdale
(dot located on map at left)
2600 S Main St, Archdale 27263
336-885-8101
- 55** The Waffle House - Archdale
10137 N Main St, Archdale 27263
336-431-4341
- 56** The Wet Whistle Co - Archdale
101-E Bonnie Pl, Archdale 27263
336-434-3223
- 57** Wendy's - Archdale
10004 S Main St, Archdale 27263
336-434-8788
- 58** Zaxby's - Archdale
10401 S Main St, Archdale 27263
336-991-5756



Bush Hill Trading Post
(Located on map at right)



Finch Field / Hi-Toms Baseball
(Located on map at left)



Shopping

- 59** Bush Hill Trading Post - Archdale
108 Interstate Dr, Archdale 27263
336-431-2030
- 60** Flowers on Greenoak
304 Greenoak Dr, Archdale 27263
336-434-2070
- 61** Hazel Williams Flower Shoppe - Archdale
10219 N Main St, Archdale 27263
336-431-2101
- 62** King Records - Archdale
124 Baker Rd, Archdale 27263
336-858-5086
- 63** Natty Bee's Boutique - Archdale
304 Trindale Rd, Ste A5, Archdale 27263
336-307-4066
- 64** Southern Accents - Archdale
111 W White Dr, Archdale 27263
336-442-6013
- 65** Southern Swag Farmhouse - Archdale
101-I Bonnie Pl, Archdale 27263
336-431-1030
- 66** The Craft Nook - Archdale
10301 N Main St, Archdale 27263
336-861-0141

Other Destinations

- 67** 1855 Trinity Museum / Winslow House / Veterans Memorial - Trinity
7524 NC Hwy 62, Trinity 27370
336-431-9456
- 68** Adaumont Farm - Trinity
(dot located on map at left)
4941 Finch Farm Rd, Trinity 27370
336-906-2232
- 69** Archdale-Trinity Chamber of Commerce - Archdale
213 Balfour Dr, Archdale 27263
336-434-2073
- 70** Carl & Linda Grubb Family YMCA - Archdale
609 Trindale Rd, Archdale 27263
336-861-7788
- 71** City of Archdale
307 Balfour Dr, Archdale 27263
336-431-9141
- 72** City of Trinity
6701 NC Hwy 62, Trinity 27370
336-431-2841
- 73** Colonial Country Club - Thomasville
7047 Colonial Club Dr, Thomasville 27360
336-475-0596
- 74** Creekside Park - Archdale
214 Park Dr, Archdale 27263
336-431-1117
- 75** Davis Ranch Arena - Archdale
(dot located on map at left)
5667 Elmer Beeson Rd, Archdale 27263
336-861-7673
- 76** Forever Young MedSpa
11635 N Main St, Archdale 27263
336-434-9925
- 77** High Point Bowling Center - High Point
(dot located on map at left)
309 W Fairfield Rd, High Point 27263
336-434-6301
- 78** High Point Rockers Baseball - High Point
(dot located on map at left)
214 Lindsay St, High Point 27262
336-888-1000
- 79** Hi-Toms Baseball / Finch Field - Thomasville
(dot located on map at left)
7003 Ballpark Rd, Thomasville 27360
336-472-8667
- 80** Holly Ridge Golf Links - Archdale
(dot located on map at left)
7933 US Hwy 311 S, Archdale 27263
336-861-4653
- 81** Kersey Valley Attractions - Archdale
1615 Kersey Valley Rd, Archdale 27263
855-185-ZIPLINE or 336-431-1700
- 82** Linbrook Heritage Estate - Trinity
(dot located on map at left)
Historic Hoover House / Neal Agricultural and Industrial Museum
5507 Snyder Country Rd, Trinity 27370
800-626-2672
- 83** Linbrook Heritage Estate - Trinity
(dot located on map at left)
Linbrook Hall
5596 Snyder Country Rd, Trinity 27370
336-861-6959
- 84** Millikan Farms - Sophia
(dot located on map at left)
3983 Millikan Rd, Sophia 27350
336-549-5222
- 85** My Father's House - Archdale
(dot located on map at left)
6352 Turnpike Rd, Archdale 27263
336-781-4700
- 86** Randolph County Public Library - Archdale Branch
10433 S Main St, Archdale 27263
336-431-3811
- 87** Randolph Community College - Archdale Center - Archdale
110 Park Dr, Archdale 27263
336-862-7980
- 88** US Post Office - Archdale
10193 N Main St, Archdale 27263
336-431-0513
- 89** US Post Office - Trinity
7259 NC Hwy 62, Trinity, NC 27370
336-431-9612
- 90** Zimmerman Vineyards - Trinity
(dot located on map at left)
1428 Tabernacle Church Rd, Trinity 27370
336-861-1414



City of Archdale
www.Archdale-NC.gov

City of Trinity
www.Trinity-NC.gov



Heart of North Carolina Visitors Bureau
500 Albemarle Rd - Asheboro, NC 27203
Phone: 800-626-2672
www.HeartofNorthCarolina.com

For more visitor information please contact:

The contents shown in this publication have been compiled using data provided by various businesses and sources listed. While every effort has been made to ensure accuracy, the Heart of North Carolina Visitors Bureau cannot assume responsibility for omissions or errors. Users should call facilities to verify hours of operation and suitability of use. Please forward any corrections to VisitorInfo@HeartofNorthCarolina.com