

NARRATIVE AND HISTORY OF THE WILDERNESS

The Birkhead Mountain Wilderness was established by the 1984 North Carolina Wilderness Act. The goals are to protect and preserve its natural resources and wilderness character and provide for public use. The Wilderness includes 5,160 acres at the northern end of the Uwharrie Mountains.

These Mountains are considered to be the oldest on the Northern American Continent. Evidence of early Indians date back over 12,000 years. The Catawba Indians and small tribes inhabited the area when the Europeans began exploring the region in the late 1600's. By 1760, explorers and traders began to exploit the area, some eventually settling in the surrounding area.

The Birkhead family raised a son, John Watson (Watt), who was born in 1858. The 3,000 acres that he acquired over the years were made up of many small tenant farms. Thus the mountain range became known locally as the "Birkhead Mountains". This old plantation is the core of the Wilderness. Evidence of early Indians and settlers can often be found. These archeological and historic artifacts and sites hold clues to America's past. If disturbed, a part of our heritage is lost forever. Federal Law protects such sites and artifacts on public land. If you discover such remains, please leave them undisturbed. Remember, as you use the Wilderness, your challenge is to leave no trace of you passing. This will protect and preserve the area for future generations.



Gold Miners - Early 1800s

All trails within the Wilderness are designated hiking trails, and are blazed in white paint. Travel by horse, motorized vehicles, or bicycles are prohibited. A detailed map of the Wilderness is available at the District Ranger's Office.



National Register Thornburg Farmstead

ACCESS FROM TROY, NC

Take 109 North to the community of Uwharrie and turn right onto Ophir Road. Ophir Road becomes Burney Mill Road as you cross into Randolph County. Continue on to the intersection of Lassiter Mill Road and turn right. Proceed north on Lassiter Mill to either of the trailhead locations as depicted on the map.

FROM ASHEBORO, NC

Take Hwy 49 south, approximately 6 miles. Turn right onto Science Hill Road. About a fourth of a mile further, at the T intersection, turn left (south) onto Lassiter Mill Road. Continue on to two trailhead locations as depicted on the map.

BIRKHEAD MOUNTAIN WILDERNESS



The United States Department of Agriculture (USDA) prohibits discrimination in its programs on the basis of race, color, national origins, sex, religion, age, disability, political beliefs and marital or familial status. (Not programs.) Persons with disabilities who require alternative means for communication of program information (Braille, large print, audio tapes, etc.) should contact the USDA office of communication (202) 720-2791 (voice). To file a complaint, with the secretary of Agriculture Department of Agriculture, Washington, DC 20250 or call 1-800-245-6340 or 1-800-1234(TDD). USDA is an equal opportunity employer.

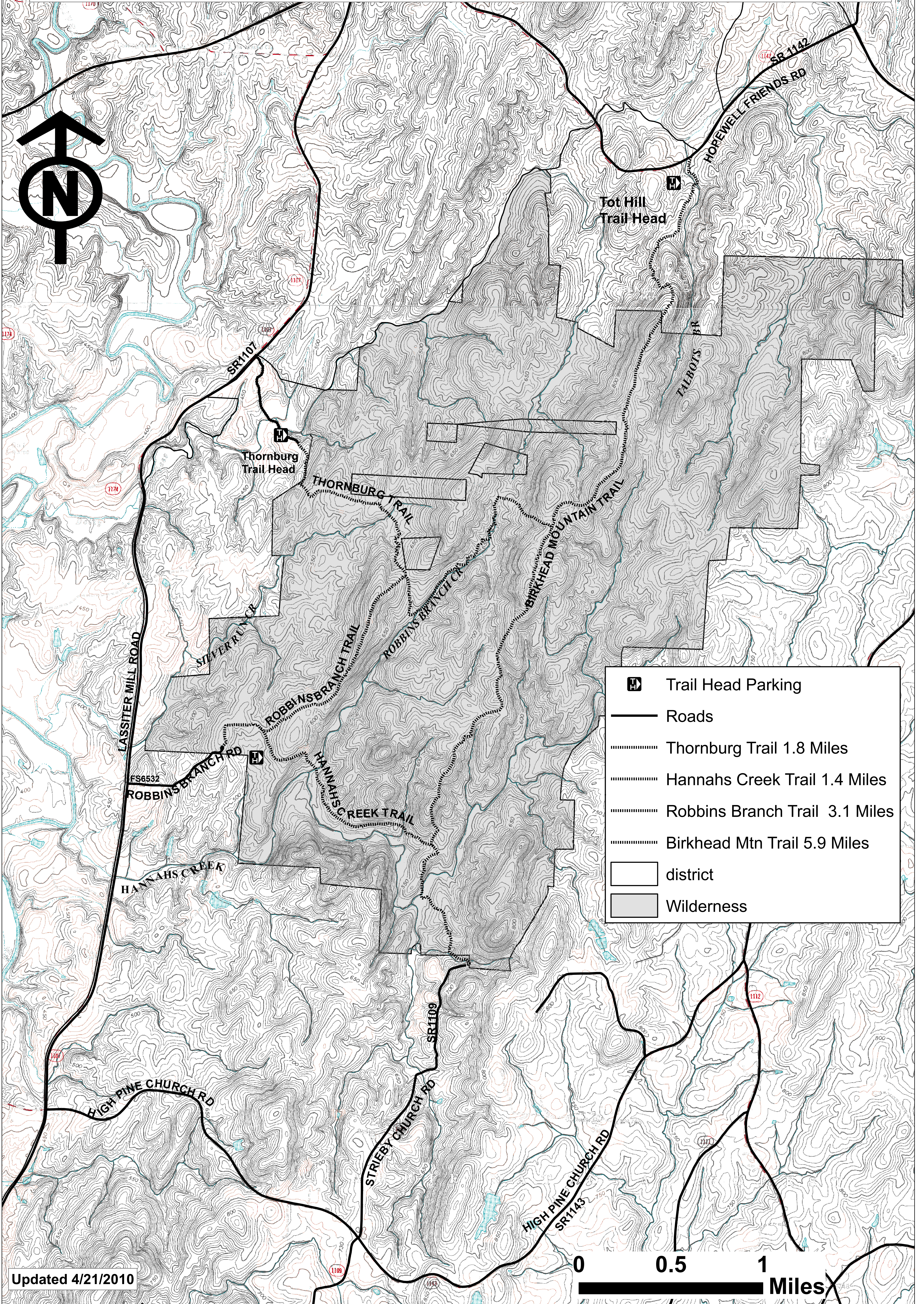
**FOR MORE INFORMATION:
UWHARRIE RANGER DISTRICT
789 NC HWY 24/27 EAST
TROY, NC 27371**

Tel: 910-576-6391



**UWHARRIE NATIONAL FOREST
NORTH CAROLINA**

UWHARRIE NATIONAL FOREST BIRKHEAD MOUNTAINS WILDERNESS TRAIL



	Trail Head Parking
	Roads
	Thornburg Trail 1.8 Miles
	Hannahs Creek Trail 1.4 Miles
	Robb's Branch Trail 3.1 Miles
	Birkhead Mtn Trail 5.9 Miles
	district
	Wilderness

Updated 4/21/2010

0 0.5 1 Miles