

# WHAT TO SEE & DO IN RANDOLPH COUNTY WORD CROSS.

See the word list below, use the hints to help solve.

**Down**

- Millstone Creek Orchards in Ramseur is known for \_\_\_\_\_.
- \_\_\_\_\_ in Asheboro has a stunning collection of military artifacts and airplanes on display as well as a Piper J-3 "Fitfire" flown by Orville Wright.
- The \_\_\_\_\_ in Asheboro celebrate the racing history of the Petty family and includes The Petty Museum, Petty's Garage, and the Toomes-Petty House in Randleman.
- The 100+ potters of Seagrove use various types of \_\_\_\_\_ to make their unique pottery creations.
- The Liberty Showcase Theater in Liberty, the Sunset Theatre and Bicentennial Park in Asheboro, and Commerce Square Park in Randleman are all great places to see and hear all kinds of great performances and \_\_\_\_\_.
- Fly through the air on \_\_\_\_\_ at Kersey Valley Attractions in Archdale and Richland Creek Zipline in Asheboro.
- Randolph County offers plenty of \_\_\_\_\_ from easy to \_\_\_\_\_ hard - check out the Deep River State Trail in Franklinville, Ramseur, and Randleman.
- The Neal Agricultural & Industrial Museum at Linbrook Heritage Estate in Trinity has an impressive collection of restored John Deere® \_\_\_\_\_.
- Richard Petty is considered the \_\_\_\_\_.
- You can see \_\_\_\_\_ at the North Carolina Zoo in Asheboro that can weigh as much as 10,000 pounds.

**Across**

- \_\_\_\_\_
- \_\_\_\_\_
- \_\_\_\_\_
- \_\_\_\_\_
- \_\_\_\_\_
- \_\_\_\_\_
- \_\_\_\_\_
- \_\_\_\_\_
- \_\_\_\_\_
- \_\_\_\_\_
- \_\_\_\_\_
- \_\_\_\_\_

## Word List:

- Apple Picking
- Clay
- Elephants
- King of NASCAR
- Motorcycles
- Music
- NC Aviation Museum and Hall of Fame
- Petty Family Attractions
- Spookywoods
- Tractors
- Trails and Hiking
- Ziplines

# EXPLORE MORE OF WHAT RANDOLPH COUNTY HAS TO OFFER!

Connect the picture to its title.

- Creekside Park, Greenway & Disc Golf Course Archdale, NC
- Davis Rodeo Ranch Archdale, NC
- Richland Creek Zipline Canopy Tour Asheboro, NC
- Holly Ridge Bunker Lounge Archdale, NC
- American Classic Motorcycle Museum Asheboro, NC
- Caraway Speedway Sophia, NC
- NC Aviation Museum & Hall of Fame Asheboro, NC

- Liberty Showcase Theater Liberty, NC
- Carolina Bronze Sculpture Garden & Foundry Seagrove, NC
- North Carolina Pottery Center Seagrove, NC
- Asheboro Zookeepers Baseball Asheboro, NC
- Yogi Bear's Jellystone™ Campground Asheboro, NC
- Pisgah Covered Bridge Asheboro, NC
- Victory Junction Randleman, NC



**SCAN OUR QR CODE FOR MORE TRAVEL INSPIRATION** and you'll also find answers to all our word and picture puzzles there!

Follow Us! [@HNCVB](#) [@TheHeartofNC](#)

Answer: North Carolina has 100 counties © 2023

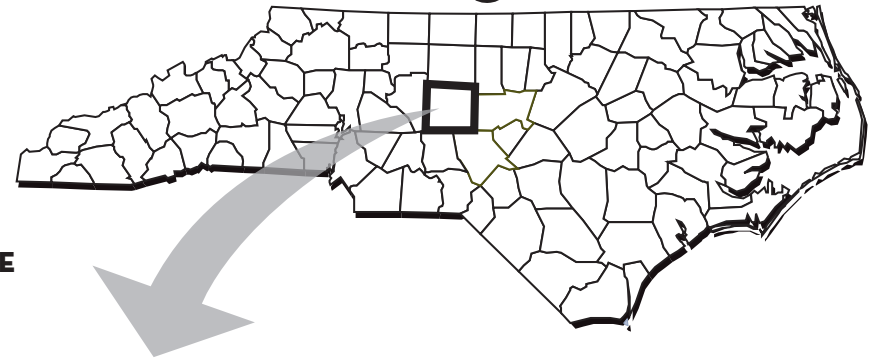


Heart of North Carolina Visitors Bureau  
500 Albemarle Rd, Asheboro, NC 27203  
For the latest visitor information, call 800-626-2672, 336-626-0364 or go to [HeartofNorthCarolina.com](http://HeartofNorthCarolina.com)

# Welcome to Randolph County, NC!

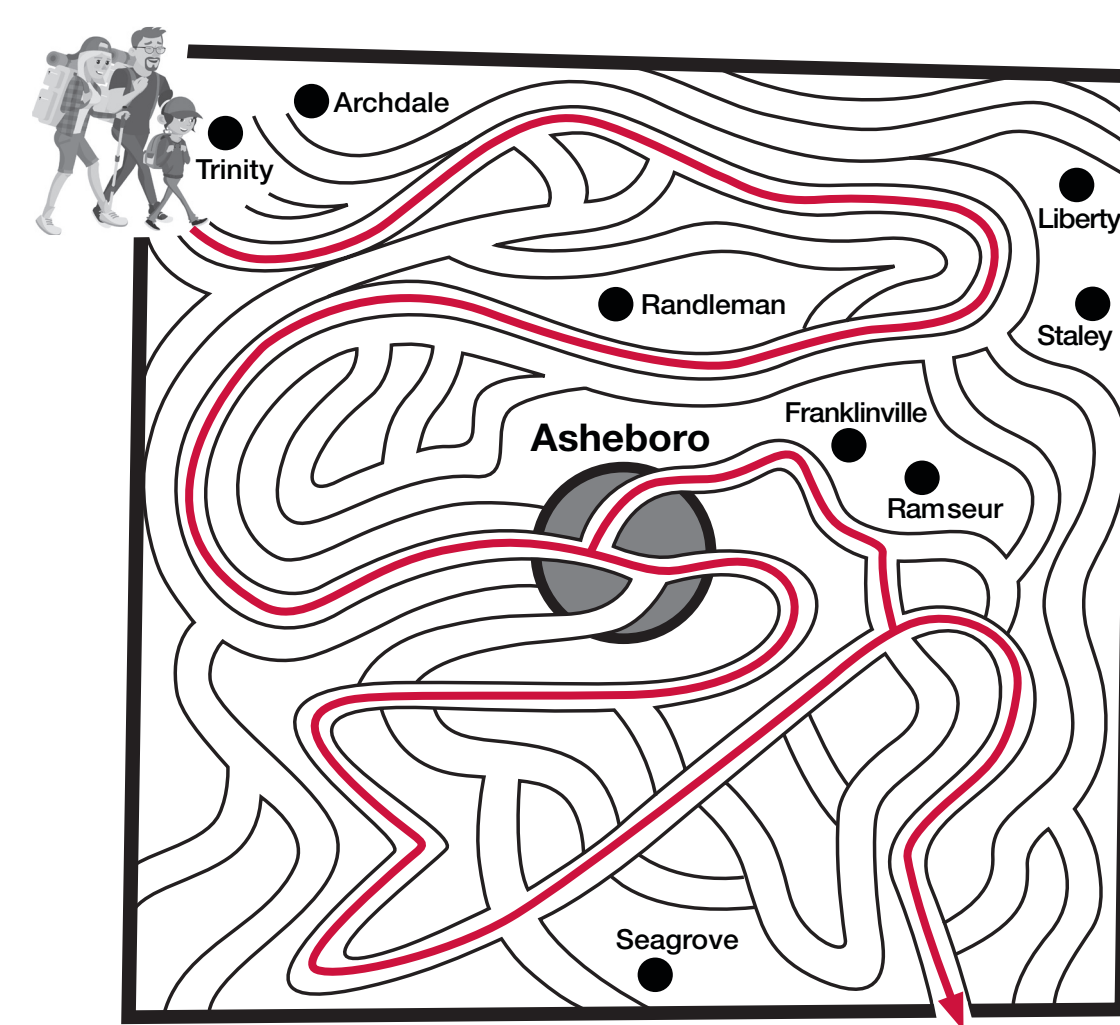
TRY OUR RANDOLPH COUNTY WORD SEARCH, CAN YOU FIND ALL THE WORDS ON OUR LIST?

CAN YOU GUESS HOW MANY COUNTIES THERE ARE IN NORTH CAROLINA? (answer is on the back page)



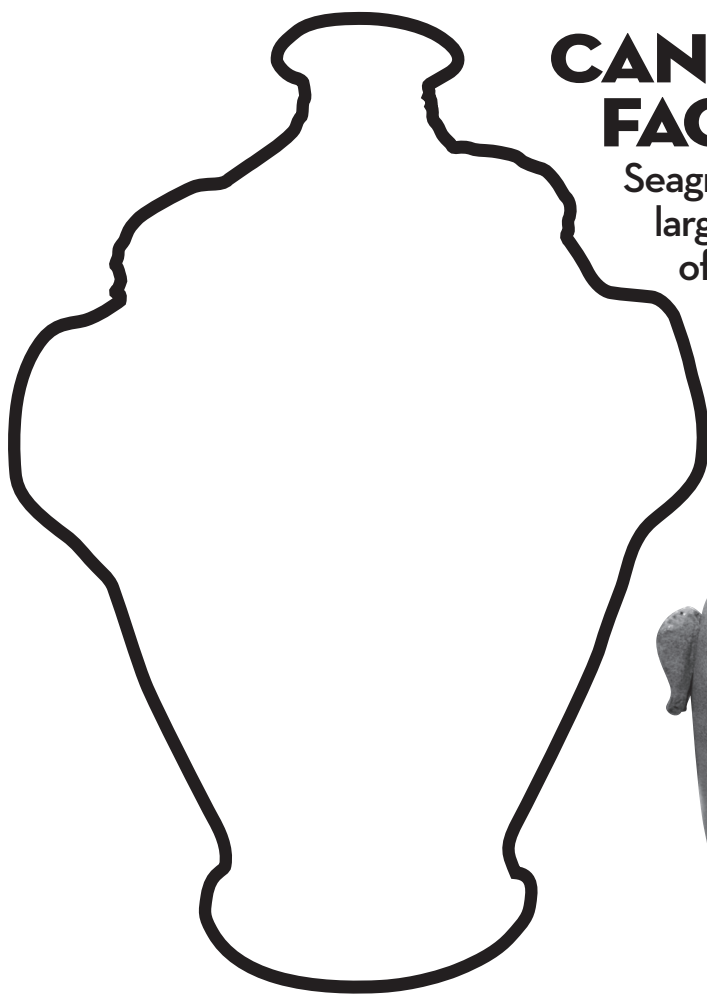
R Z T D P P M K E R S E Y V A L L E Y A T T R A C T I O N S  
 T M B L R R B O Z Y X U Z N M W A A V K M F D J E N K I J L  
 U H J D S E A G R O V E P O T T E R Y D Z T O K Z B I D R I  
 M V E T J F C D O Z S B S I R Z K N C K X D T E H I E R E B  
 C Z R L Z E K L D E E P R I V E R S T A T E T R A I L N M E  
 T A K G I R U I J L R S I G B R M X P V V N C D I J P G I R  
 M J R H U B A N H K Q F Z L T M D M K A J D Q V O P Y Y L T  
 X Y I L G U E B W U Q D I G K S U R P J M L N X S F Z M L Y  
 G Q C C L M U R E K Q A Z N R T Q W T B T A S N X L W D S X  
 N B H S N B E O T O N B G M A K O N P A U S T M G Q Z U T A  
 D S A R N K O O T Y H O K I U O L W Q I X H R G F S N Z O G  
 A W R A H Z L K N R S F R T Y I U R G M A E D T N O W T N B  
 E D D H M X F H F G N H D A G H H G P A X B A B P U F P E V  
 N X P P G Y N E R O Q X O O W N M R Q A A O E A K G A U C U  
 N Y E X N O U R A R M H P W A B E T R L A R H S Q Y P K R Y  
 O F T L Q D A I N S A V M D C I Z X J C S O E Y H L V C E F  
 R R T H H B Y T K W I N Q N E A B V P W D A R C H D A L E G  
 T O Y B I D G A L X Y D D N L V S Y Y O R M U H H O E I K N  
 H C D M Y E U G I B K S X O T S E E T Q H O N Y Q B N T O N  
 C P M D N K Z E N L R T D K L A G H T C R N N W R L U N R T  
 A W M B V E B E V Z A B G M U P H M G H V S W M Q U K X C U  
 R R F W V C N S I S N X J V C X H E R F E S S K Q U M U H M  
 O W K T R D B T L Y D X T T X S P C I Y P A X D X P T L A C  
 L M X T G H N A L N L O U O C T Q O O T J H T U V R G F R H  
 I A T R M O N T E T E T L K F A E N T U O P L E X Q T B D V  
 N D Y I X Y P E J A M H C E S L S M H X N Z T J R Q Z D S T  
 A V F U N Z I U G P P A S O V N E R O H D G T U D D G T B F T  
 Z A U I Z F S R I N N H N Y O Y S V X U K T Y N E I C X T K  
 O J E T A D B V R R A M S E U R I R D Y P S K Q K N R F H B  
 O Q I Y N T Z E M G M H O L L Y R I D G E G O L F L I N K S

- ARCHDALE
- ASHEBORO
- DEEP RIVER STATE TRAIL
- FRANKLINVILLE
- HOLLY RIDGE GOLF LINKS
- KERSEY VALLEY ATTRACTIONS
- LIBERTY
- LINBROOK HERITAGE ESTATE
- MILLSTONE CREEK ORCHARDS
- NORTH CAROLINA ZOO
- RAMSEUR
- RANDLEMAN
- RANDOLPH COUNTY
- RICHARD PETTY
- SEAGROVE POTTERY
- STALEY
- THE LIBERTY SHOWCASE THEATER
- TRINITY



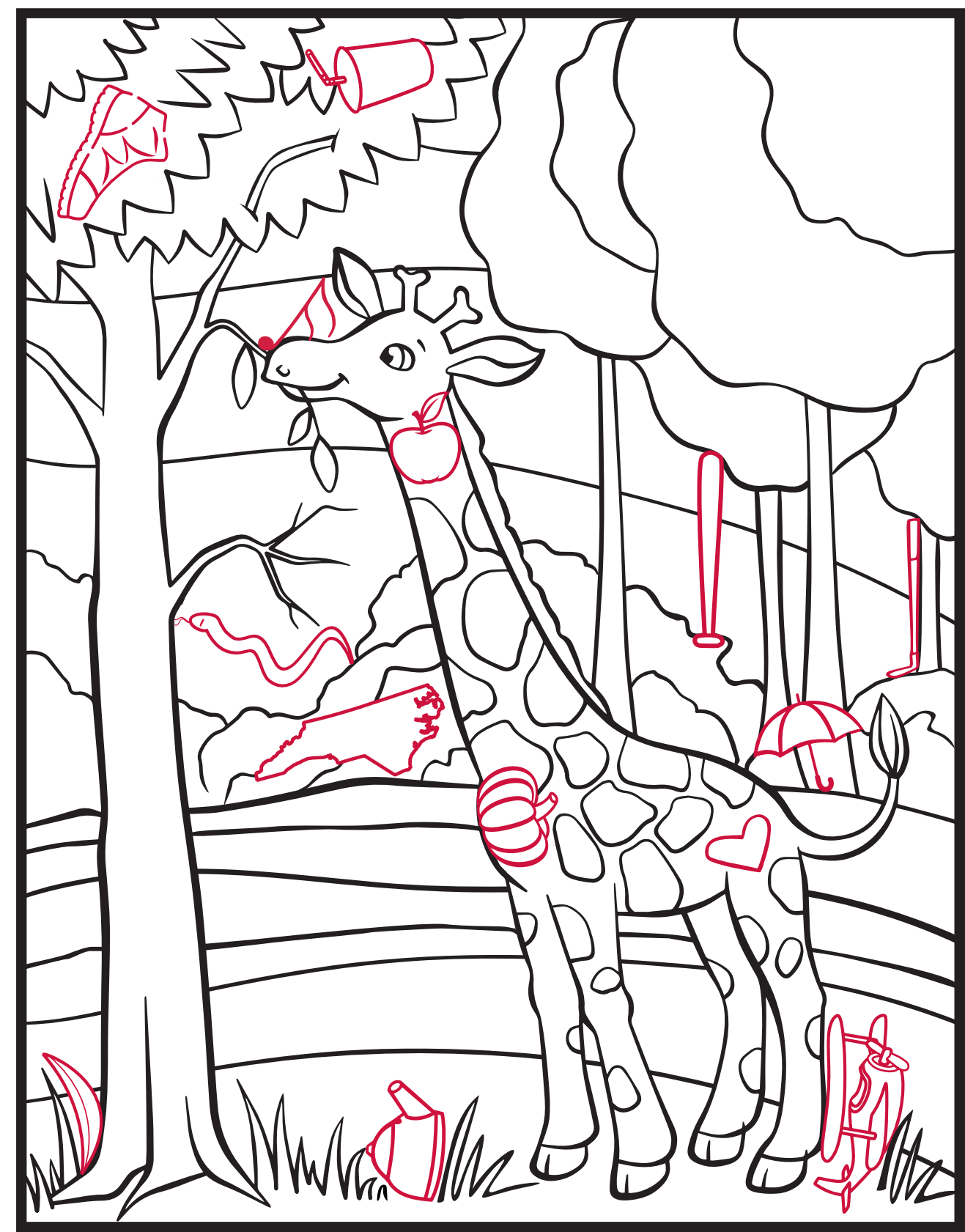
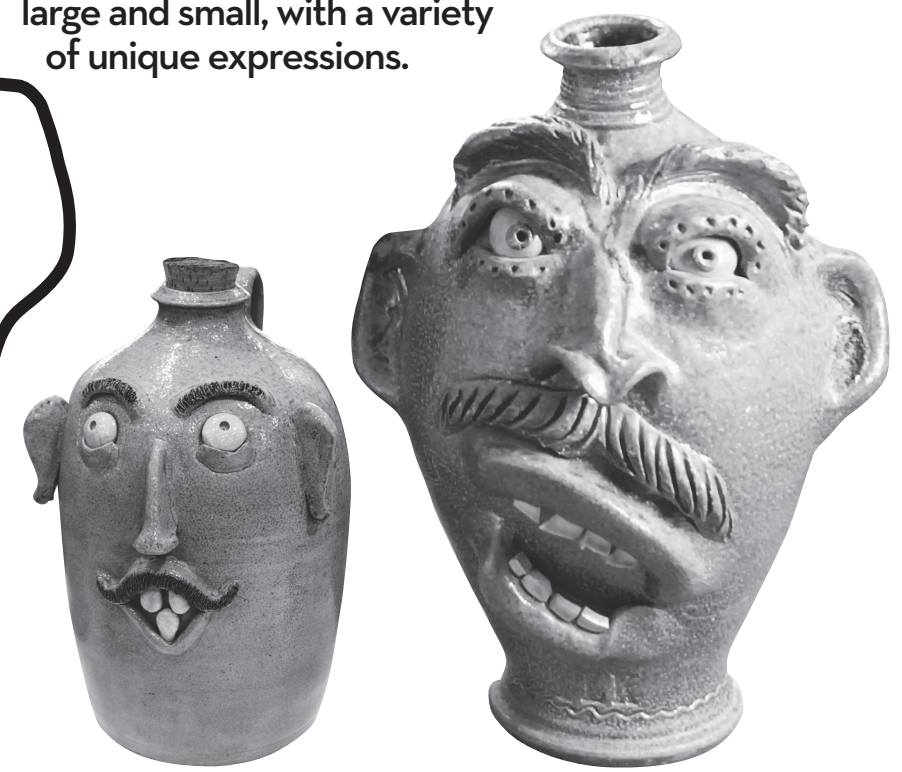
## EXPLORE RANDOLPH COUNTY'S HIKING TRAILS!

Can you help this family hike from one side of the county to the other? Fun facts: Randolph County has more than 19 hiking trails. The Deep River State Trail runs through three municipalities in Randolph County. Randolph County is the 11th largest county in the state of North Carolina. The Uwharrie National Forest is 50,645 acres and consists of Randolph, Montgomery, and Davidson counties.



## CAN YOU DRAW A NEW FACE FOR OUR FACE JUG?

Seagrove Potters have a tradition of making face jugs, large and small, with a variety of unique expressions.



## CAN YOU FIND ALL THE HIDDEN ITEMS IN OUR GIRAFFE PICTURE?

The North Carolina Zoo in Asheboro is home to two different species of giraffe, the reticulated giraffe and the Northern giraffe.

- Heart (Corazón)
- North Carolina (Carolina del Norte)
- Pottery Teapot (Tetera de cerámica)
- Hiking Boot (Bota de senderismo)
- Baseball Bat (Bate de béisbol)

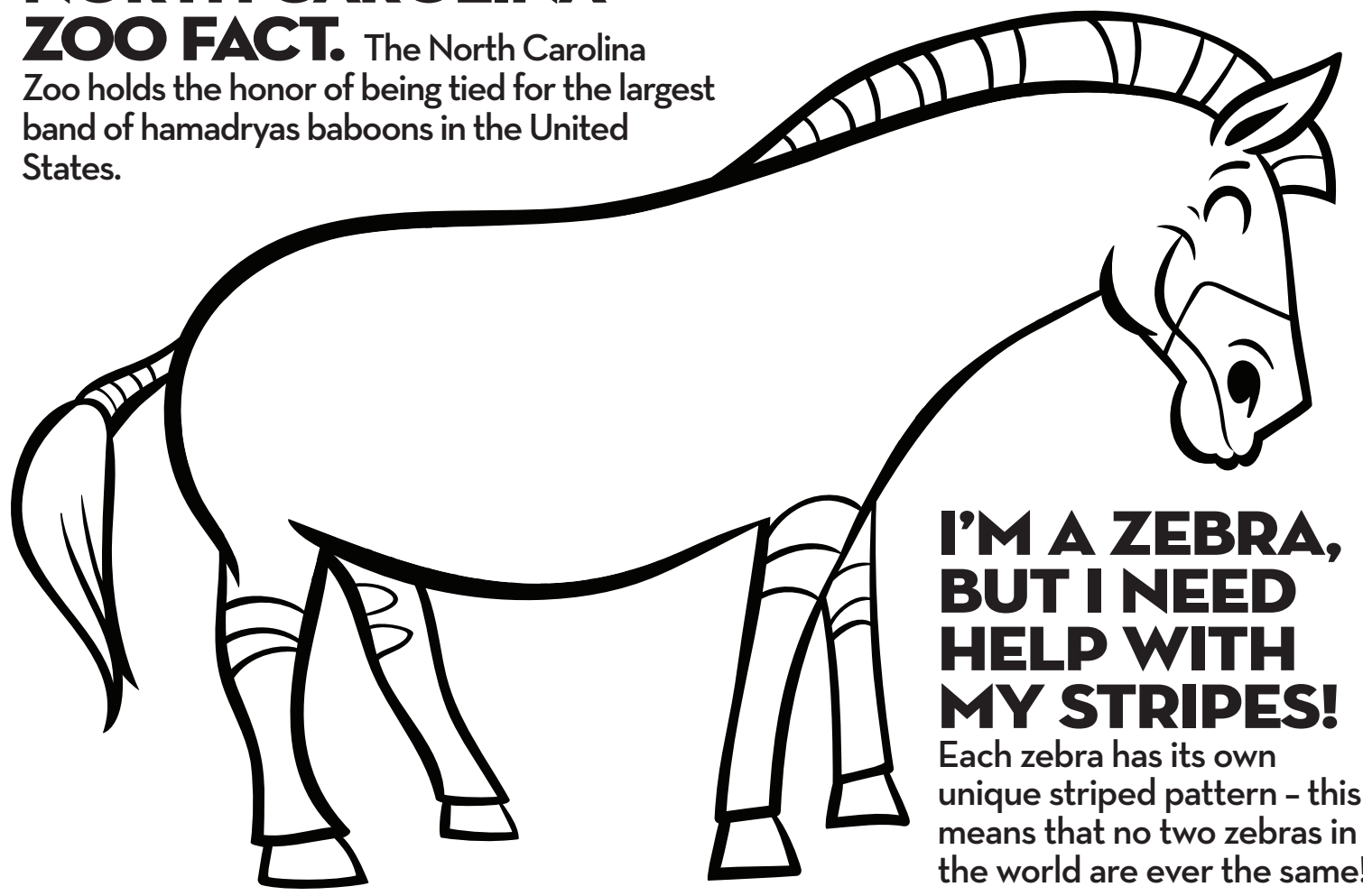
- Banana (Plantain)
- Umbrella (Paraguas)
- Pumpkin (Calabaza)
- Airplane (Avión)
- Apple (Manzana)
- Drink Cup (Copa de bebida)
- Snake (Serpiente)
- Golf Club (Club de Golf)
- Music Note (Nota musical)

**DID YOU KNOW?** The North Carolina Zoo in Asheboro is the world's largest natural habitat zoo. Having that much room allows animals like the African Southern White Rhino plenty of room to roam.



## ANOTHER FUN NORTH CAROLINA ZOO FACT.

The North Carolina Zoo holds the honor of being tied for the largest band of hamadryas baboons in the United States.



## I'M A ZEBRA, BUT I NEED HELP WITH MY STRIPES!

Each zebra has its own unique striped pattern - this means that no two zebras in the world are ever the same!