

betchesttravel



Follow



309 posts

82.9k followers

183 following



betchesttravel • Follow

The Wayfinder Hotel



betchesttravel You guys know we love a good Newport getaway so we're giving you more of an inside look at @disco_infern0's Labor Day vaca at @thewayfinderhotel. Most importantly the hotel is pet friendly because who wants to leave their dog at home?? Having a legit restaurant and bar on site also came in clutch for either a pre-night drink or night cap. The pool area is spacious and perfect for social distancing since you need to make a reservation with the front desk in advance to avoid crowding. The only thing to note is that the hotel is not walking distance to town so order Ubers in advance of when you want to get picked up because there aren't a ton of available cars because of Covid. Right now they're running a promo:



Liked by lex_whitley and 448 others

17 HOURS AGO

Add a comment...

Post

@betchestravel

house rules
house rules
house rules
house rules

TOGETHER LET'S

ALL WEAR MASKS

SOCIAL DISTANCE

STAY 6FT APART

STAY HOME IF SHOWING
SYMPTOMS OF COVID

GATHERINGS OF 5 OR LESS

WASH HANDS FREQUENTLY

HAVE FUN!





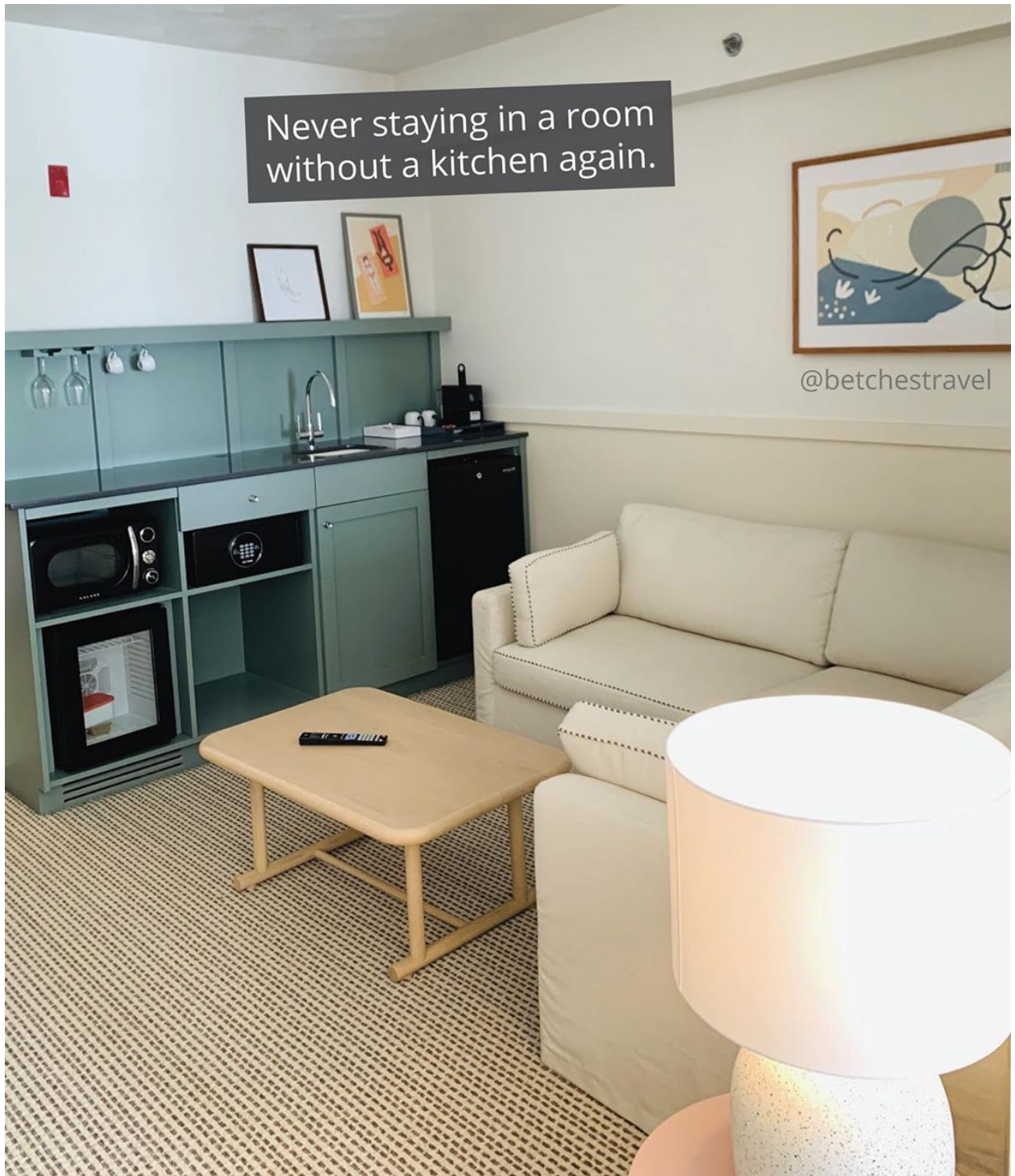
The King Parlor Suite

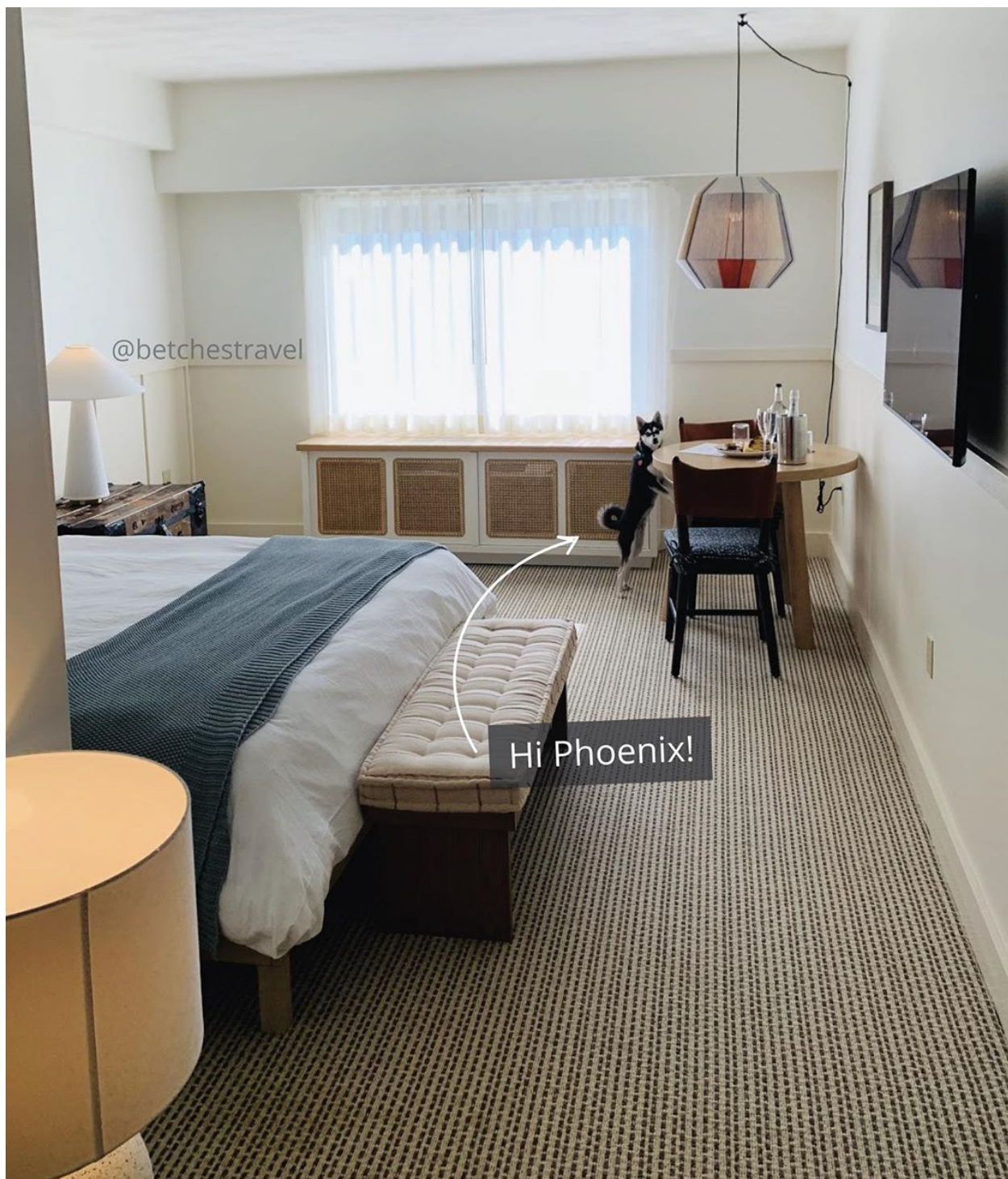
We had to go all out for our anniversary with a suite. This room came with a kitchenette including a microwave, sink, refrigerator, and nespresso machine, and a living room with a pull out sofa. The kitchen came in more handy than you would think traveling with a dog.

Never staying in a room
without a kitchen again.



@betchesttravel






@betchesttravel

Hi Phoenix!

Nomi Park

This is the latest spot from Mission Group, with a menu filled with new dishes & customer favorites from their 10 years of business in Newport.



The image shows two identical glasses of a yellow-green cocktail called 'Lit Juice'. Each glass is filled with crushed ice and topped with a white, charred flower garnish. A blue and white striped straw is inserted into each glass. The glasses are sitting on a wooden surface. In the background, there are green plants and a blurred interior of a bar or restaurant.

LIT JUICE

Lunzaul tequila, Hypnotiq,
passion fruit, lime, chili

@betchesttravel



@betchesttravel

The Pool

To comply with state guidelines, there is reduced capacity at the pool to ensure social distancing. Reservations are required and you can make one by reaching out to the front desk.

Even if you're not trying to go for a swim, we def recommend having drinks or food outside on the pool deck.

@betchesttravel

