

# **IFNPAC Q3 Meeting**

## **Interagency Food and Nutrition Policy Advisory Council**

*Focus: The Economic Impacts of RI's Food System*



Wednesday September 14, 2022

10:00 – 11:30am

Location: RI Commerce Corporation

**RHODE  
ISLAND**

# Agenda

---

- Welcome & Introductions
- Review and approve June 2022 Minutes
- **Good Food News! Progress Update**
  - Food delivery resource guide (RI Food Policy Council)
  - Growing Farm to School in RI via new USDA Grant (RIDE)
  - Federal grants supporting underserved food producers & improving food security (RIDEM)
- **DEEP DIVE: Economic Impacts of RI Food System**
  - Measuring the economic impact of our local food system
  - Implications for RI
- **Policy Recommendations for RI's Food System**
- **Public Comments and Discussion**

# Welcome and Introductions

---

## Department of Environmental Management (DEM)

Terry Gray (Chair), Acting Director  
Ken Ayars, Chief of Agriculture

## Department of Health (RIDOH)

Randi Belhumeur, Health Systems Transformation Administrator

## RI Commerce Corporation (RICC)

Julianne Stelmaszyk, Director of Food Strategy

## Department of Education (RIDE)

Jessica Patrolia, Child Nutrition Programs Coordinator

## Department of Administration (DOA)

Libby Kimzey, Chief of Staff

## Governor's Office

Christopher Abhulime, Deputy Chief of Staff

## Office of Healthy Aging (OHA)

Maria Cimini, Director

## Department of Human Services (DHS)

Jenna Maloney, Assistant SNAP Administrator

## Department of Corrections (DOC)

Terrence McNamara, Administrator Physical Resources

# Good Food News Progress Update

---

- NEW Food Delivery Resource Guide
  - Growing "Farm to School" in RI
- Federal grants supporting local food producers & improving food security






# Key Updates: HETF Meeting July 26th, 2022

- 57 Task Force members attended
- Panel discussion featured innovative healthcare programs that provide food assistance, such as vegetable prescriptions and clinics that offer on site food pantries for patients
- *Sign up for the RI Food Access Bulletin!*



August 2022   
[State Updates](#) .. [Community Program and Project Highlights](#) .. [RI Hunger Elimination Task Force Meeting Information](#) .. [Events & Opportunities](#)



**RHODE ISLANDS Supplemental and Emergency Food Delivery Providers**

**New! The Rhode Island Food Policy Council has launched a supplemental food delivery resource guide!**

In 2021, more than 75 Hunger Elimination Task Force participants discussed the needs and uses for emergency and supplemental food delivery information. **This guide was developed to help those who provide services to food insecure residents get nutritious food delivered to their clients** and will be updated annually. *Feedback and updated information are welcome.* Email [Caitlin Mandel](mailto:Caitlin.Mandel@riphhs.org) with questions.



# Rhode Island Supplemental Food Delivery Resource Guide Now Available



- Provides a statewide Map and Town by Town List of supplemental food programs that offer free or low cost home delivery
- *The resource guide will be included with the minutes from this meeting, please share widely within your agencies!*

## Last HETF Meeting of 2022

Tuesday, **October 18**, 2:00 pm - 3:30 pm

Focus: **State of the State of Hunger in RI  
and Planning for 2023!**



Email [caitlin@rifoodcouncil.org](mailto:caitlin@rifoodcouncil.org) to be added to  
the HETF Email List



# Good Food News Progress Update

---

*Growing "Farm to School" in RI*

*Jessica Patroliia, RI Department of Education (RIDE)*



# Growing Farm to School in Rhode Island

Jessica Patroliia, Child Nutrition Programs Coordinator

## Why support "Farm to School" Initiatives? Farmers Win, Communities Win, Kids Win

### Pre-COVID, the Federally funded School Nutrition Programs...

- served over 13 million lunches and just under 6 million breakfasts to children and youth throughout the state
- brought in about \$42 million in Federal funding to the state



Most school nutrition budgets allow for about 30% food cost, which means that of the \$42 million in Federal revenue coming into the state, up to \$12.5 million is spent directly on food

However, of the 45 RI school respondents to the most recent USDA Farm to School Census, only 8 reported including Farm to School activities in specific budget allocations

# Growing Farm to School in Rhode Island

**Rhode Island FARM TO SCHOOL**  
EAT • GROW • LEARN

- **BUILDS** RELATIONSHIPS BETWEEN SCHOOLS & LOCAL FARMS
- **SUPPORTS** ACCESS TO LOCAL FOOD
- **CREATES** OPPORTUNITIES FOR EDUCATION & HEALTH PROMOTION
- **BENEFITS** THE LOCAL ECONOMY & ENVIRONMENT

**FARMERS WIN**  
SUPPORT YOUR COMMUNITY FARMERS. THEY'RE YOUR NEIGHBORS!

**COMMUNITIES WIN**  
LOCAL FARMS PRESERVE GREEN SPACES & SUPPORT BIODIVERSITY.  
BUYING LOCAL INVESTS IN THE COMMUNITY.

**KIDS WIN**  
LOCAL FOOD IS NUTRITIOUS, FRESHER AND TASTES BETTER.

[www.rifarmtoschool.org](http://www.rifarmtoschool.org)

The infographic features a central graphic of a winding road that starts at a school building at the bottom left, goes up and right, then loops back down and left to a farm truck, and finally goes up and right to a sun and plants. Illustrations include a farmer with a pitchfork, a woman with a plant, a school building, a farm truck, a tree, and a group of children with produce. A QR code is located in the bottom right corner of the infographic.

The RI Farm to School Network has been working to further the state's F2S efforts, focusing on 3 primary components – local procurement, education, and school garden initiatives. Since 2019, we've been working to:

- Develop a standard, statewide definition of local food
- Create a platform to gather data related to local purchasing efforts
- Establish a network map of stakeholders engaged in Farm to School efforts around the state
- Develop a RI F2S brand and marketing campaign
- Curate a library of school gardening resources
- Streamline and strengthen existing F2S programs such as Harvest of the Month and Local Food Ambassador
- Coordinate and promote F2S events around the state

[www.rifarmtoschool.org](http://www.rifarmtoschool.org)

# Growing Farm to School in Rhode Island

## Looking Forward – NEW funding (\$259K) towards RI farm to school initiatives

The RI Farm to School Network, led by State Agency partners including RIDE, RI DEM, RIDOH and RI Commerce, will continue to support F2S efforts with a focus on procurement and value chain support.

This work is supported by RI DEM's recently awarded USDA Farm to School grant and will include:

1. Hiring the State's first-ever Farm & Sea to School Coordinator
2. Developing a strategic plan to guide the state's F2S efforts for the next 3-5 years
3. Continuing the development and expansion of the RI F2S Network
4. Convening stakeholders to mobilize advocates & partners to further F2S work around the state



# Good Food News Progress Update

---

*Federal grants supporting local food producers & improving food security*

*Ken Ayars, RI Department of Environmental Management*

*Div. of Agriculture & Forestry*

**RHODE  
ISLAND**

# Update on Federal Grants via DEM for Local Food System

2020 -  
2021

<b>USDA Farm to School Grant \$96k (2020)</b>	<b>USDA Senior Farmers Market Nutrition Program \$297k</b>	<b>USDA Specialty Crop Block Grant \$250k</b>	<b>EDA Build Back Better Regional Challenge \$360k (pending)</b>	<b>USDA Supply Chain Assistance Funding for schools \$2.8M</b>	<b>USDA Farm Ranch Stress Assistance Network Grant \$559k</b>
---	--	---	--	--	---

**awarded: ~\$4 million**

2022

<b>USDA Farm to School Grant \$347k</b>	<b>USDA Senior Farmers Market Nutrition Program \$297k</b>	<b>USDA Specialty Crop Block Grant \$375k</b>	<b>USDA Local Food Purchasing Cooperative Agreement \$720k</b>	<b>USDA Local Food for Schools Coop Agreement \$560k (in process)</b>
---	--	---	--	---

**awarded: ~\$2.2 million pending: ~\$1 million**

# Local Agriculture & Seafood Act (LASA) Grants

Established in 2014 by the RI General Assembly, LASA grants provide low-risk micro funding to new and emerging food producers, helping to support market entry, product innovation and economic opportunity in a low-margin industry.

**LASA Grant programs were increased to \$700,000 for FY23!**

01

Provides "start-up" capital to beginning, young and immigrant food producers

02

Fills a gap in funding for businesses and organizations deemed "not credit-worthy"

03

Helps established food businesses and non-profits **innovate** by **developing new products** and **accessing new markets**



Photo: Hope's Harvest RI

**LASA invests in essential food producers**

Photo: Hope's Harvest Rhode Island, Providence received \$20,000 to enable contracts to grow produce for the local emergency food system, build farmer capacity, and enhance the economic competitiveness of RI-grown agricultural products.

# KEY IMPACTS of LASA Grant Program 2014 - 2021

**\$1.13 million**

Awarded to date

**\$2.5 million**

Follow on financing leveraged  
by recipients

**\$14 million**

Increased gross sales for recipients of  
the LASA grant



- **84 new jobs**
- **101 grant awards to date**
- **Majority for infrastructure and equipment**
- **79% of recipients secured additional funding through grants or loans**
- **90% reported revenue increases**

Source: From surveys of 65 grantees from 2014 – 2018 (LASA Five Year Report 2019)

Photo: RI Mushroom Company

# Deep Dive: Measuring Economic Impacts of the Food System

---

Measuring the economic impact of New England's Food System (Ellen  
Kahler, New England Feeding New England)

Implications for Rhode Island (Juli Stelmaszyk, RI Commerce)





# RI IFNPAC Presentation

"Measuring the Economic Impact of New England's Food System"

**New England Feeding New England**

A project of the New England State Food System Planners Partnership

September 14, 2022

Ellen Kahler, Executive Director

Vermont Sustainable Jobs Fund

[www.nefoodsystemplanners.org](http://www.nefoodsystemplanners.org)

# The New England State Food System Planners Partnership



Ellen Kahler



NH FOOD ALLIANCE

Erin Hale & Nicole Cardwell



Tanya Swain



Martha Page & Meg Hourigan



Nessa Richman & Julianne Stelmaszyk



Winton Pitcoff & Brittany Peats

In collaboration with



Lisa Fernandes

New England Feeding New England  
**PROJECT GOAL**



**By 2030, 30% of the food consumed in New England is produced/harvested/caught within New England.**

Our collective effort will focus on expanding and fortifying the region's food supply and distribution systems in an equitable and inclusive way that ensures the availability of adequate, affordable, socially and culturally appropriate products under a variety of rapidly changing climate, environmental, and public health conditions.

New England Feeding New England

# PROJECT TIMELINE



**By 2030, 30% of the food consumed in New England is produced/harvested/caught within New England.**

**RESEARCH**  
2021 through 2022



**PLANNING**  
2022 through 2023



**IMPLEMENTATION**  
2023 into 2030 and beyond



↑  
we are  
here!

# Research Overview



- 17-member Research Team assembled and working across 5 research areas
- Research to inform strategy development, investment and policy recommendations that support increasing consumption of food produced in the region to 30% by 2030
- Year-long, multi-layered research to better understand the New England food supply chain, consumer and retail behavior and project what might be possible by 2030

# Research Categories



**Calculate numbers of jobs and establishments** for the 6 state New England region between 2010 – 2020. Determine the level of occupational segregation by race/ethnicity related to employment. [presented 11/16/21]

**Calculate production and economic impact estimates** using data from US Census of Agriculture & US Bureau of Labor Statistics, and the Economic Census for manufacturing and distribution.

**Update the Dietary Needs estimates** from the New England Food Vision with more current data on production and trends + current USDA MyPlate guidelines.

**Regional market channel study** to analyze consumption and purchasing patterns and identify potential demand for regionally produced food within each market channel.

Identify and quantify **targets necessary to produce and distribute 30% of the food needed by New Englanders**, representing the diversity of ethnic, racial, and cultural preferences, in New England, by 2030.

# Measuring Economic Impact of the New England Food System

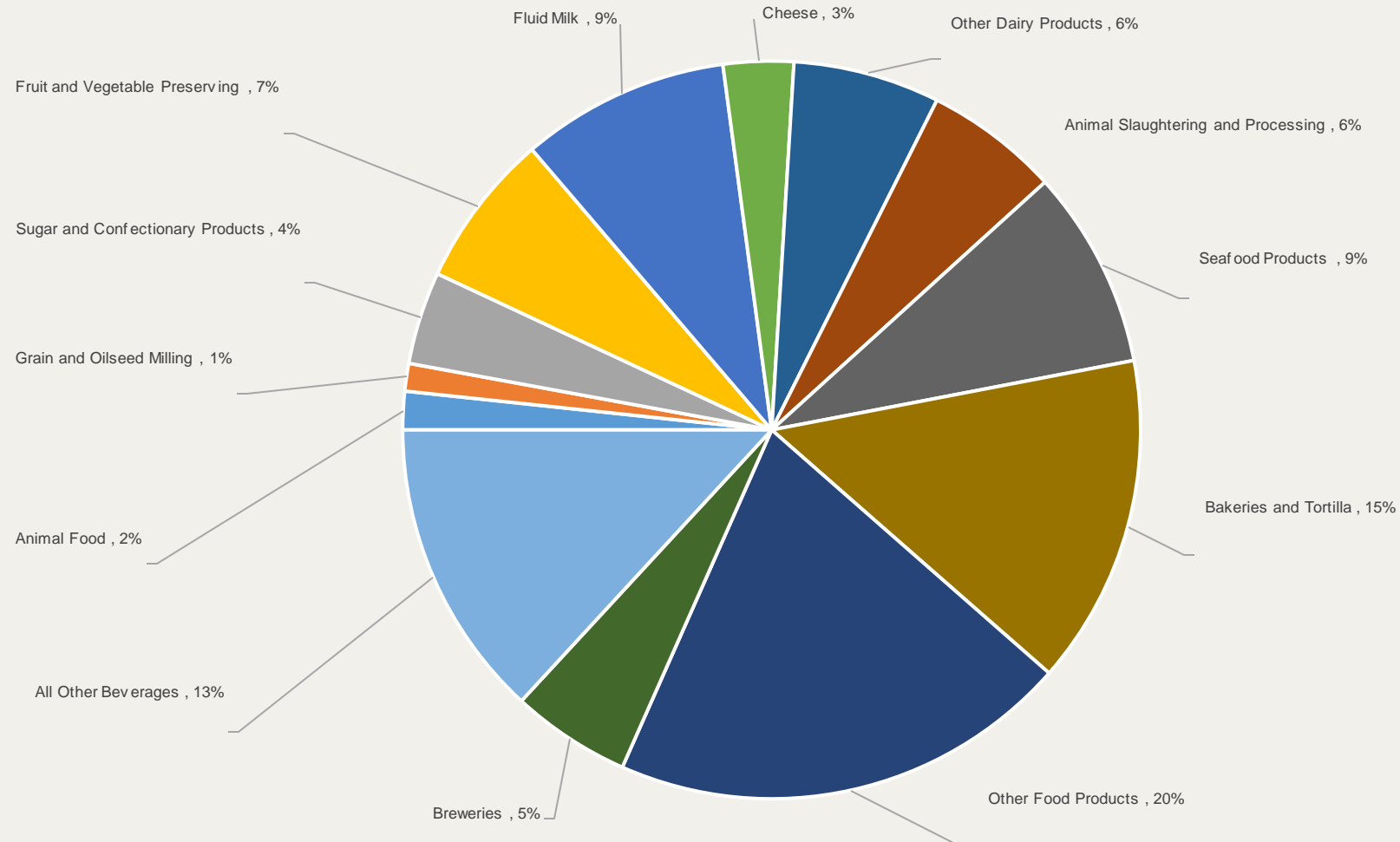


New England Food System: Sales by Sector for the Region, 2007, 2012, 2017						
Sector	Sales (\$2020, 000s)			Annual Sales Growth Rate (% Growth per Year)		
	2007	2012	2017	2007-2012	2012-2017	2007-2017
Agriculture and Fisheries	4,591,867	4,384,963	4,114,360	-0.9%	-1.3%	-1.1%
Food Product Manufacturing	22,948,659	19,698,305	21,821,352	-3.0%	2.1%	-0.5%
Trade and Distribution	104,797,226	112,717,864	126,229,081	1.5%	2.3%	1.9%
Services	31,787,648	32,291,029	37,569,985	0.3%	3.1%	1.7%
<b>Total</b>	<b>164,125,400</b>	<b>169,092,162</b>	<b>189,734,779</b>	<b>0.6%</b>	<b>2.3%</b>	<b>1.5%</b>
Source: U.S. Census, Economic Census, 2007, 2012, 2017 and USDA-NASS annual production statistics. Missing or suppressed data estimate by Kavert, Rocker and Associates.						

# Measuring Economic Impact of the New England Food System



**Chart 8**  
**New England Food System: Composition of Food Product Manufacturing, 2017 Sales**





# Measuring Economic Impact of the Rhode Island Food System



Rhode Island: Sales by Sector for the Region, 2007, 2012, 2017						
Sector	Sales (\$2020, 000)			Annual Sales Growth Rate (% Growth per Year)		
	2007	2012	2017	2007- 2012	2012- 2017	2007- 2017
Agriculture and Fisheries	201,516.6	167,242.1	171,795.7	-3.7%	.5%	-1.6%
Food Product Manufacturing	1,020,618.2	920,589.5	729,453.9	-2%	-4.5%	-3
Trade and Distribution	5,654,137.4	6,704,219.4	8,238,095.3	3.5%	4.2%	3.8%
Services	2,402,290.2	2,417,179.6	2,774,747.01	.1%	2.8%	1.5%
<b>Total</b>	<b>9,278,562.4</b>	<b>10,209,230.7</b>	<b>11,914,091.9</b>	<b>1.9%</b>	<b>3.1%</b>	<b>2.5%</b>

Source: U.S. Census, Economic Census, 2007, 2012, 2017 and USDA-NASS annual production statistics. Missing or suppressed data estimate by Kavert, Rocker and Associates.

# Measuring Economic Impact of the Rhode Island Food System



Rhode Island: Sales by Sector for the Region, 2007, 2012, 2017						
Sector	Sales (\$2020, 000)			Annual Sales Growth Rate (%) Growth per Year		
	2007	2012	2017	2007- 2012	2012-2017	2007- 2017
Fisheries	116,294.0	109,559.0	109,856.0	-1.2%	.1%	-0.6%
Seafood Products	51,896.3	0.0	0.0			
Total	168,190.3	109,559.0	109,856.0			
<small>Source: U.S. Census, Economic Census, 2007, 2012, 2017 and USDA-NASS annual production statistics. Missing or suppressed data estimate by Kavert, Rocker and Associates.</small>						

# Economic Multipliers for the New England Food System



New England Food System: Economic Multipliers						
States and Region, 2017						
State/Multiplier	Output		Value Added		Employment	
	Type I	Type II	Type I	Type II	Type I	Type II
Connecticut	1.42	1.81	1.42	1.86	1.22	1.45
Maine	1.46	1.91	1.47	2.00	1.29	1.60
Massachusetts	1.44	1.94	1.46	2.05	1.22	1.51
New Hampshire	1.49	1.94	1.52	2.08	1.24	1.50
Rhode Island	1.45	1.90	1.43	1.92	1.23	1.49
Vermont	1.53	1.88	1.67	2.23	1.44	1.77
NEW ENGLAND	1.45	1.90	1.47	2.01	1.24	1.52

Source: Kavet, Rockler and Associates using the Implan Model

# Measuring Economic Impact of the New England Food System



New England Food System: Employment by Sector for the Region, 2007, 2012, 2017						
Sector	Employment (Jobs)			Annual Employment Growth Rate (% Growth per Year)		
	2007	2012	2017	2007- 2012	2012- 2017	2007- 2017
Agriculture and Fisheries	127,575	134,643	127,072	1.1%	-1.2%	0.0%
Food Product Manufacturing	48,239	47,619	52,979	-0.3%	2.2%	0.9%
Trade and Distribution	241,668	257,583	258,489	1.3%	0.1%	0.7%
Services	471,494	495,349	560,737	1.0%	2.5%	1.7%
<b>Total</b>	<b>888,976</b>	<b>935,194</b>	<b>999,277</b>	<b>1.0%</b>	<b>1.3%</b>	<b>1.1%</b>
Source: U.S. Census, Economic Census, 2007, 2012, 2017 and USDA-NASS annual production statistics. Missing or suppressed data estimate by Kavert, Rocker and Associates.						

# Measuring Economic Impact of the Rhode Island Food System

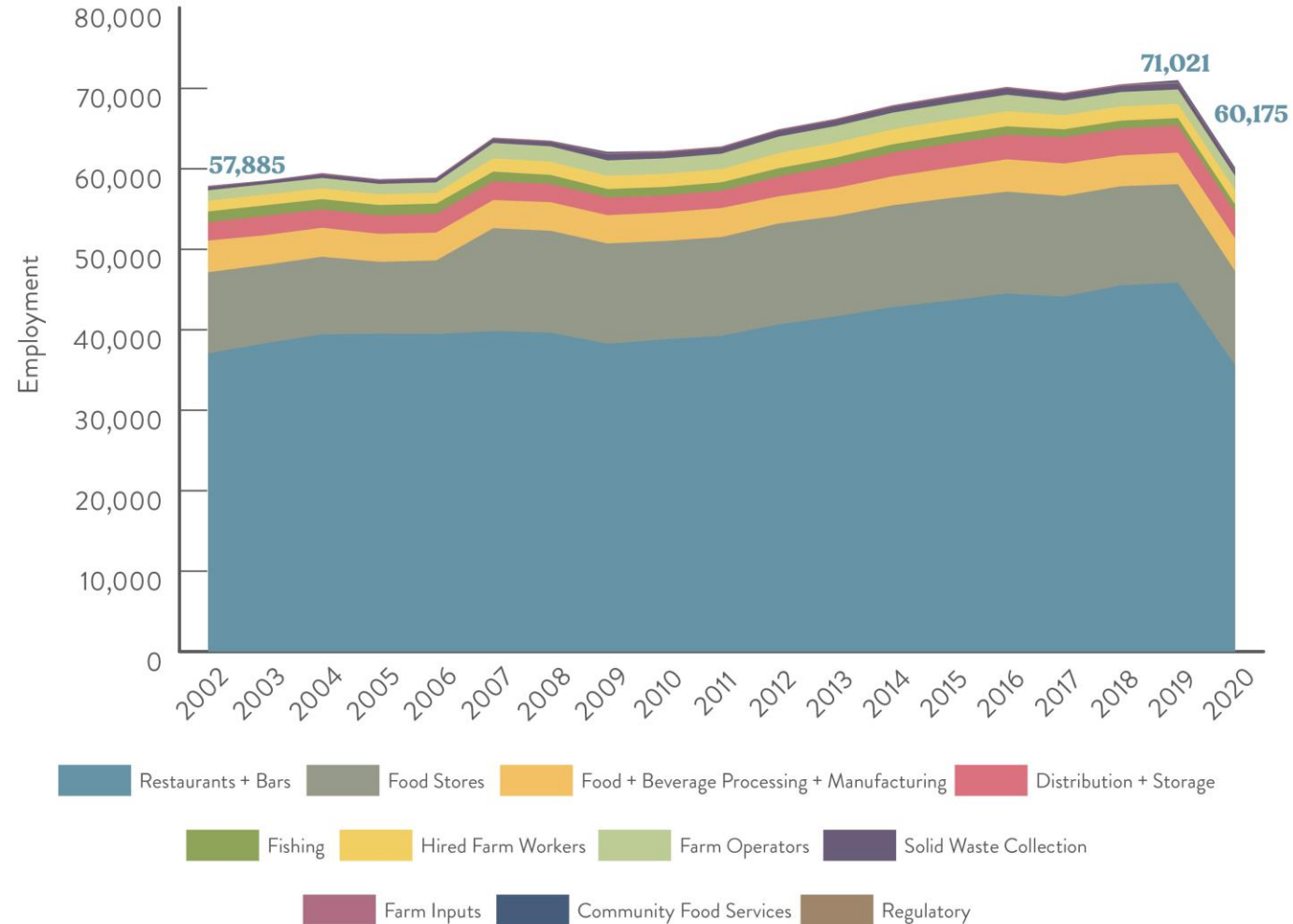


Rhode Island: Employment by Sector for the Region, 2007, 2012, 2017						
Sector	Employment (Jobs)			Annual Employment Growth Rate (% Growth per Year)		
	2007	2012	2017	2007- 2012	2012- 2017	2007- 2017
Agriculture and Fisheries	4,908	5,091	4,714	.7%	-1.5%	-0.4%
Food Product Manufacturing	2,815	2,677	2,726	-1%	.4%	-0.3%
Trade and Distribution	14,296	14,750	14,742	.6%	0%	0.3%
Services	40,319	40,040	44,151	-0.1%	2%	.9%
<b>Total</b>	<b>62,338</b>	<b>62,558</b>	<b>66,333</b>	<b>.1%</b>	<b>1.2%</b>	<b>.6%</b>
Source: U.S. Census, Economic Census, 2007, 2012, 2017 and USDA-NASS annual production statistics. Missing or suppressed data estimate by Kavert, Rocker and Associates.						

# Employment by Food Category



Rhode Island Food System Employment by Category



# Key Take Aways



1. New England's Food System is important in and of itself in terms of size (jobs, sales).
2. It has not historically had high growth activity viewed as a whole, but certain industries, most recently brewing, local farm product and supply wholesaling, have seen very high growth rates.
3. Policy needs to be concerned with size, growth, and interconnections in the regional food system. Emphasis on one dimension is likely to be ineffective for the long-run.

# Research: Next Steps



- Nearing completion of 1<sup>st</sup> draft writing phase
- Final draft, editing, layout, printing
- Report release sometime in late November or early December
- Taking the report on the road in 2023 – lots of presentations!





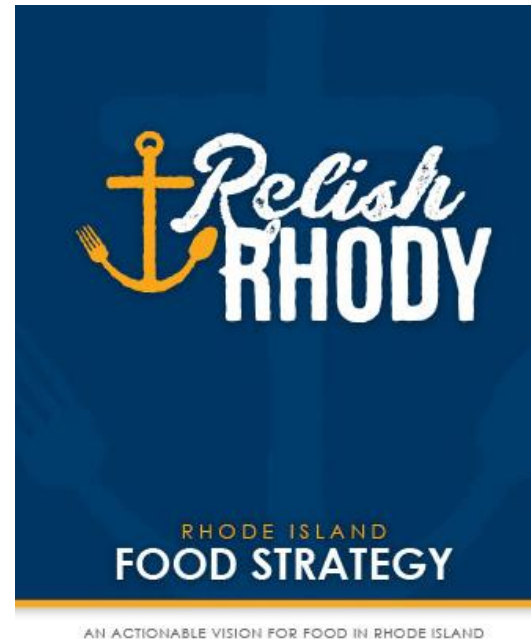
For more information, contact  
your state lead, email [nefne@vsjf.org](mailto:nefne@vsjf.org),  
or visit [www.nefoodssystemplanners.org](http://www.nefoodssystemplanners.org)

**Thank you!**

# Implications for Rhode Island in 2023 and beyond...

Juli Stelmaszyk, Director of Food Strategy at RI Commerce

- RI's food economy is larger than we thought at 18% of total State GDP
- The food economy overall is growing, but not equally.
- We are still missing key economic indicators such as:
  - local food consumption and
  - accurate agricultural economy data



## INTEGRATED FOCUS AREAS:

Preserve & Grow Agriculture, Fisheries Industries in Rhode Island

Enhance the Climate for Food & Beverage Businesses

Sustain & Create Markets for Rhode Island Food, Beverage Products

Ensure Food Security for all Rhode Islanders

Minimize Food Waste & Divert It from the Waste Stream

# Policy Recommendations for Rhode Island's Food System

---

Rhode Island Food Policy Council  
Nessa Richman, Executive Director

**RHODE  
ISLAND**

RI FOOD  
POLICY  
COUNCIL



**Building a more just and resilient  
food system for all Rhode Islanders.**

Independent Network • 501c3 • Est. 2011

**CLEAN AIR**

**SUPPORTIVE  
POLICY**

**CAPITAL  
ACCESS**

FARMS & FISHERIES PRODUCTION



PROCESSING



FOOD WASTE



**RI FOOD  
SYSTEM**

DISTRIBUTION



CONSUMPTION



RETAIL

**CLEAN  
WATER**

**CLEAN SOIL**

**RI FOOD  
POLICY  
COUNCIL**



## RHODE ISLAND FOOD SYSTEM HIGHLIGHTS



**\$12B**

FOOD SECTOR  
ECONOMIC OUTPUT



**75,800**

FOOD JOBS



**55,000**

ACRES IN FARMLAND



**1,043**

FARMS



**\$100M**

WILD-CAUGHT SEAFOOD AND  
AQUACULTURE VALUE



**1 IN 6**

HOUSEHOLDS STRUGGLING  
WITH HUNGER

# KEY POINTS FROM THE 2022 NETWORK SURVEY

High-Priority Activities for  
Improving RI's Food System by 2030:

- **Preserve and protect agricultural land**
- **Reduce inequity in the food system**
- **Support small food businesses** (providing capital & technical assistance)
- **Ensure access to affordable, culturally-appropriate food for all people**
- **Promote climate-smart practices**

**512**

TOTAL  
RESPONSES

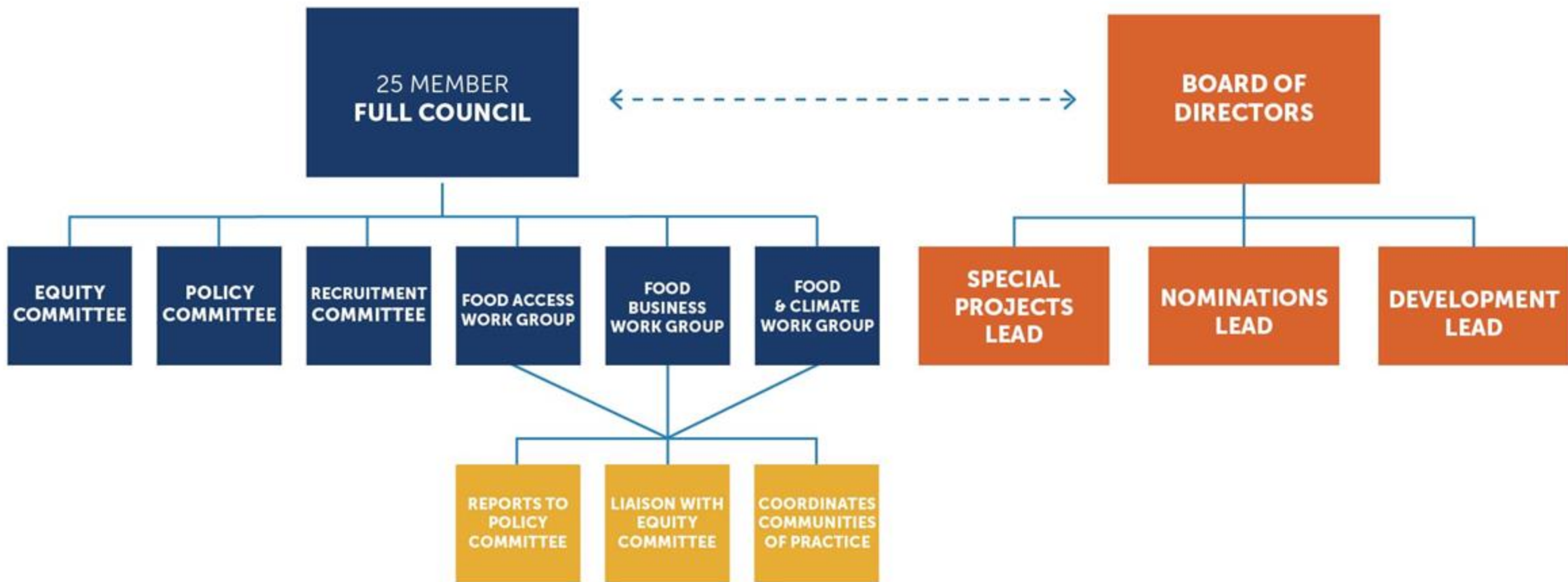
RI FOOD  
POLICY  
COUNCIL



# OUR GOALS: 2023-2030







# POLICY PRIORITIES FOR THE 2023 LEGISLATIVE SESSION



Preserve  
**our farms**



Ensure  
**food access**



Protect  
**our environment**



Support  
**our businesses**

# Preserve our farms



Support land access for farming across Rhode Island by ensuring consistent, adequate funding for the Agriculture Land Preservation Commission, increased and sustained funding for the Farmland Access Program, and by creating a funded “Urban Farmland Access Program.”

# Protect our environment

Develop a comprehensive strategy for minimizing and diverting wasted food going into the landfill that includes tax incentives for excess food donation as well as wider mandates and increased support for residential and commercial organic waste composting.



POLICY PRIORITIES FOR THE 2023 LEGISLATIVE SESSION

# Ensure food access



Support new, sustainable avenues for local farmers, seafood harvesters and other businesses (e.g., manufacturers and restaurants) to easily sell and deliver nutritious food to direct and indirect wholesale (e.g. school) markets that serve food insecure communities and residents.

RI FOOD  
POLICY  
COUNCIL



# Support our businesses



Support second stage food businesses with shared-use infrastructure, marketing and technical assistance, grants, tax incentives, and low-cost loans. Require that a set percentage of selected incentives and grants go to historically underserved business owners.

RI FOOD  
POLICY  
COUNCIL



**Nessa Richman**, Network Director

*nessa@rifoodcouncil.org*

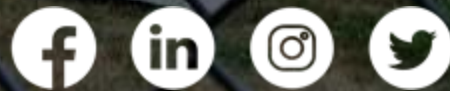
**Allison Montagnon**, Communications Manager

*allison@rifoodcouncil.org*

---

[www.rifoodcouncil.org](http://www.rifoodcouncil.org)

Interact & advocate with us @rifoodcouncil





# Open Discussion and Comment



**THANK YOU!**

**Next Meeting:**

**Q4 IFNPAC  
Tuesday December 13th  
9:30am-11:00am  
RI Commerce Corporation**

**RHODE  
ISLAND**