



IFNPAC Q4 Meeting

Interagency Food and Nutrition Policy Advisory Council

Tuesday December 13th

9:30 – 11:00am

Rhode Island Commerce

**RHODE
ISLAND**

Agenda

1. Welcome & Introductions
 2. Review and approve September 2022 Minutes
 3. Proposed council Structure for 2023
 4. Release of new RI food system data dashboard
 5. Vision for future Healthy Living & Eating Program at RIDOH
 6. Deep Dive: Responding to the Hunger & Nutrition Crisis
 - Status of Hunger Report 2022, RI Community Food Bank
 - Policy Topic - Healthy School Meals for All, No Kid Hungry
-
1. Establish 2023 Priorities
 2. Public Comment

Welcome and Introductions

Department of Environmental Management (DEM)

Terry Gray (Chair), Acting Director
Ken Ayars, Chief of Agriculture

Department of Health (RIDOH)

Randi Belhumeur, Health Systems Transformation Administrator

RI Commerce Corporation (RICC)

Julianne Stelmaszyk, Director of Food Strategy

Department of Education (RIDE)

Jessica Patrolia, Child Nutrition Programs Coordinator

Department of Administration (DOA)

Libby Kimzey, Chief of Staff

Governor's Office

Christopher Abhulime, Deputy Chief of Staff

Office of Healthy Aging (OHA)

Maria Cimini, Director

Department of Human Services (DHS)

Jenna Simeone, Assistant SNAP Administrator

Department of Corrections (DOC)

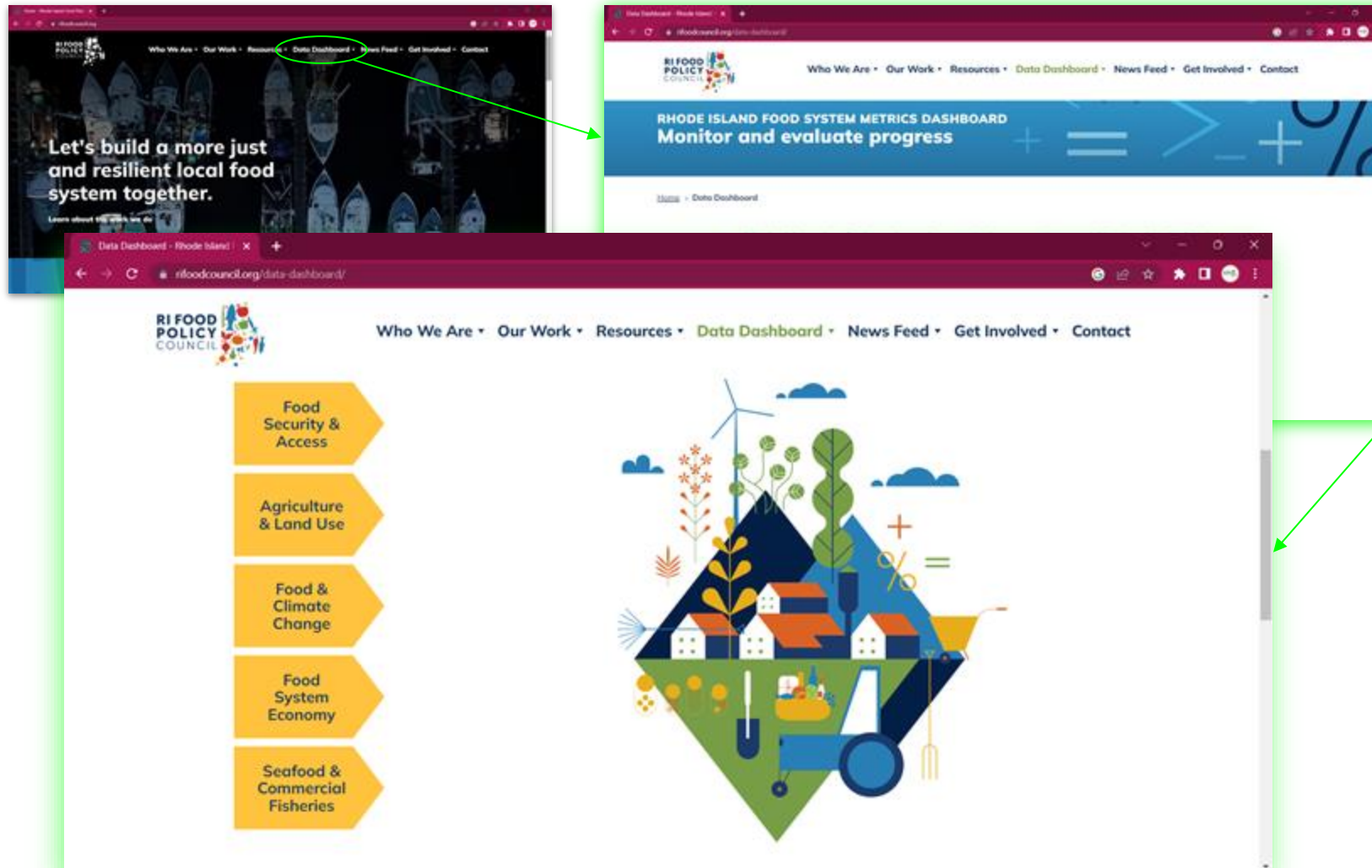
Terrence McNamara, Administrator Physical Resources

Good Food News

Physical Activity & Nutrition Program grant
NEW! RI Food System Data dashboard

RIFPC Data Dashboard

www.rifoodcouncil.org/data-dashboard



Virtual Data Dashboard Overview – Thursday, January 12 @ 12:30pm
TO REGISTER: rifoodcouncil.org/event/dashboard-overview/

Healthy Eating and Active Living: RIDOH



- ✓ Strategic Plan complete
- ✓ Rebuilding the rebranded program (formerly PAN – Physical Activity and Nutrition)
- ✓ Dedicated staff for the rebuild
- ✓ Writing CDC State Physical Activity and Nutrition (SPAN) NOFO
- ✓ Seek additional funding streams
- ✓ Complete Streets project
- ✓ Food Systems work

Deep Dive: Responding to the Hunger & Nutrition Crisis

2022 Status of Hunger Report

Andrew Schiff, CEO
Rhode Island Community Food Bank

Healthy School Meals for All

Margaret Read, Senior Manager
No Kid Hungry Campaign

**RHODE
ISLAND**



RHODE ISLAND COMMUNITY
FOOD BANK

40 YEARS | ENSURING NO ONE
GOES HUNGRY

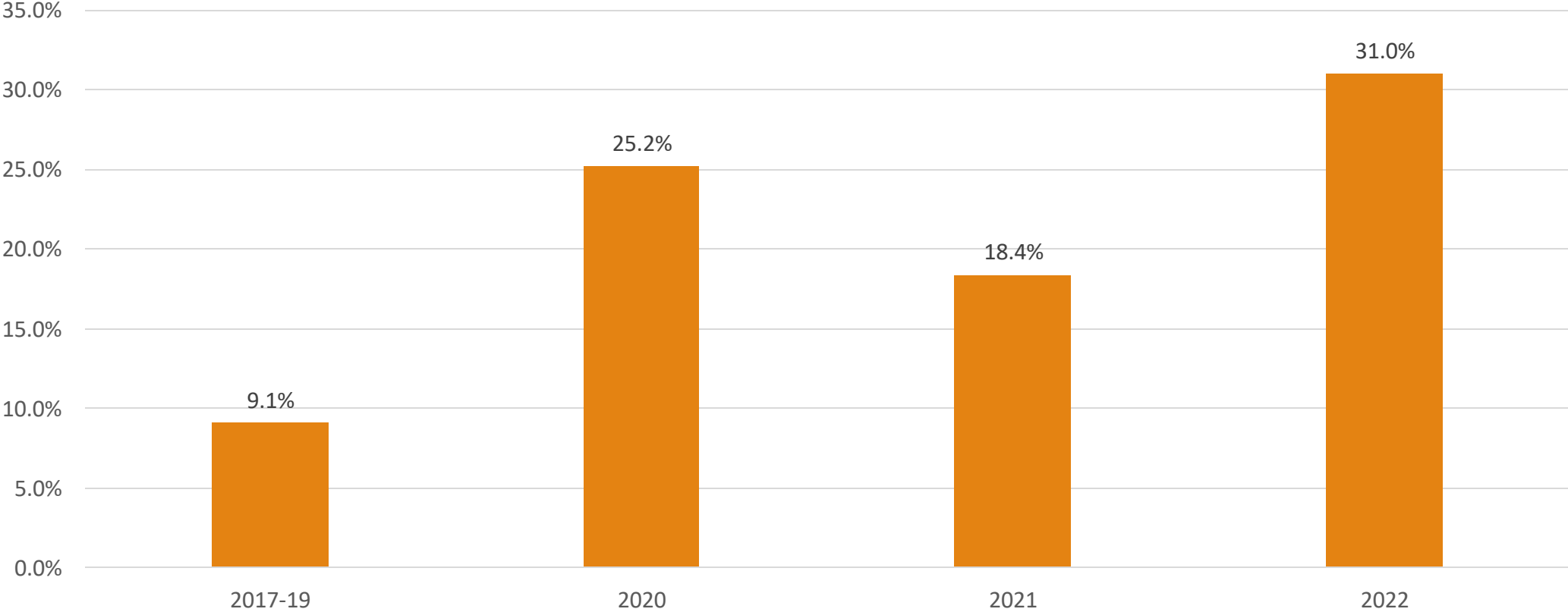
2022 Status Report on Hunger in Rhode Island

RI Life Index

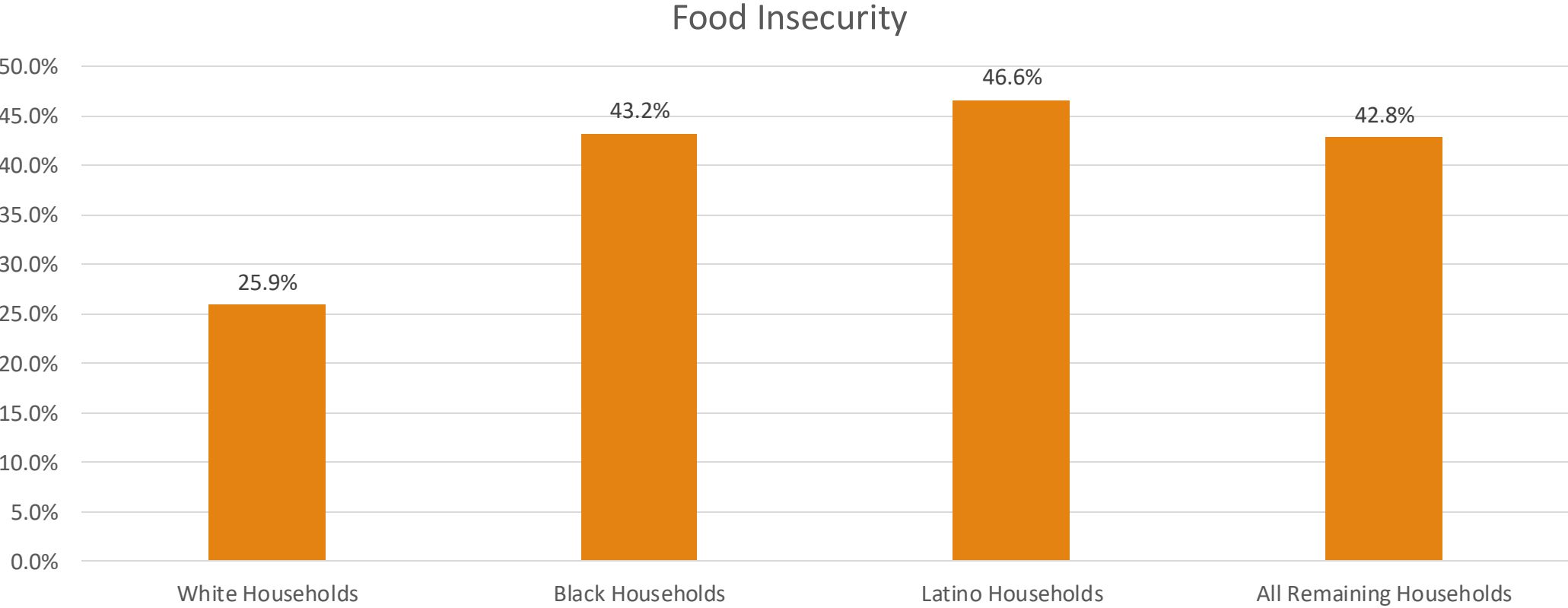
Tell me whether these statements were always true, sometimes true, or never true for your household in the last 12 months:

- “We worried whether our food would run out before we got money to buy more.”
- “The food we bought just didn’t last and we didn’t have money to get more.”

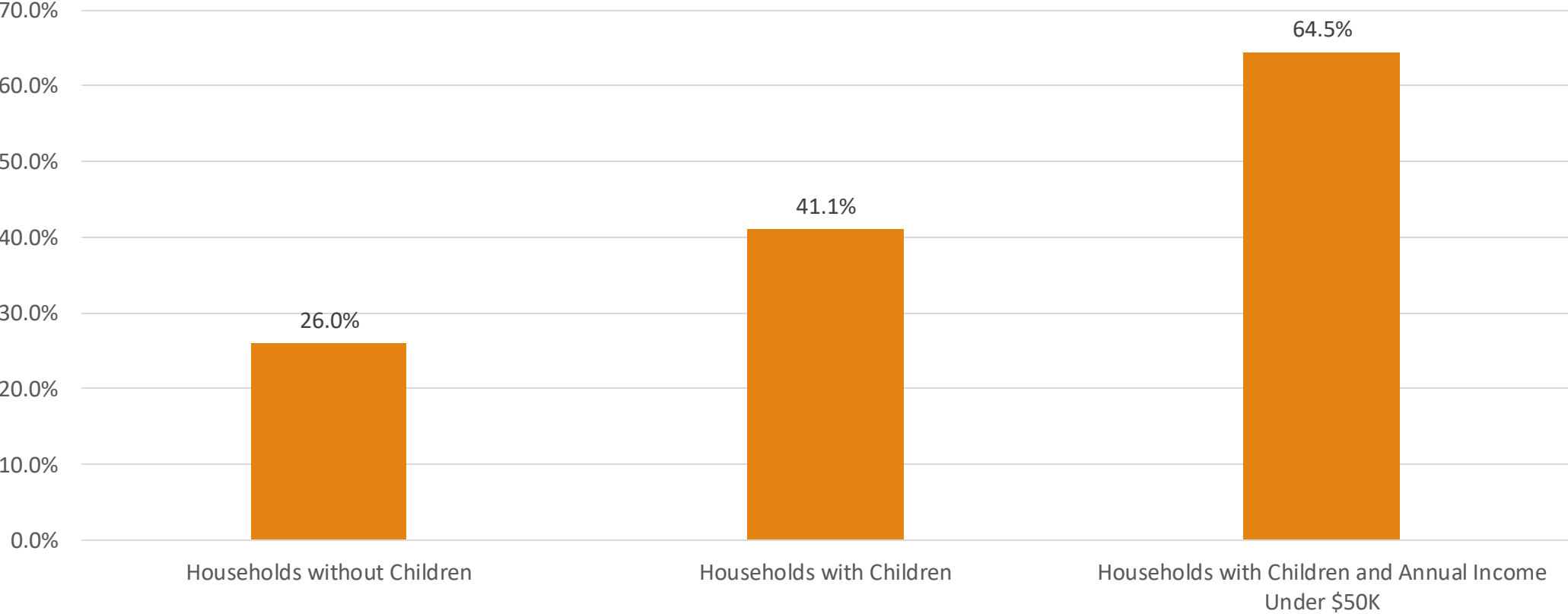
Food Insecurity in Rhode Island



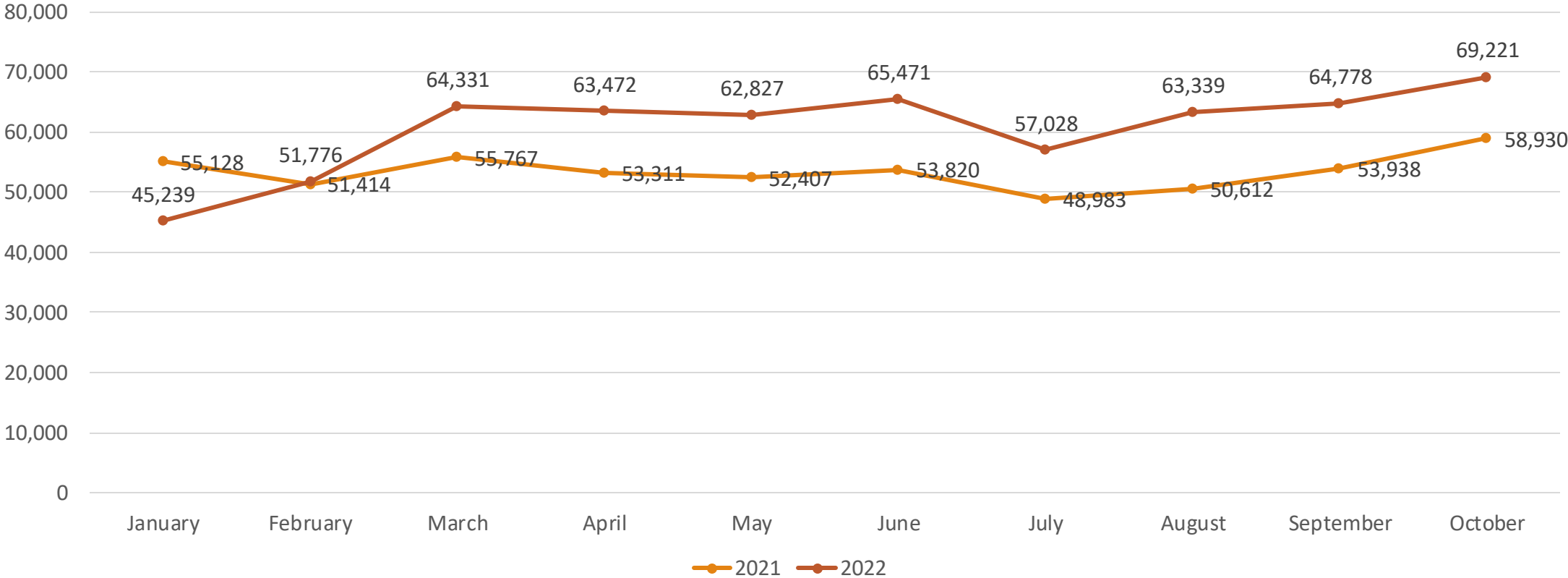
Race and Ethnicity Breakdown



Food Insecurity: Highest Rates Among Low-Income Families with Children



Growing Demand for Food Assistance





2022 STATUS REPORT on Hunger in Rhode Island

Food is Unaffordable for Thousands of Rhode Islanders

MAJOR FINDINGS

- ★ Soaring food prices burden families still recovering from the effects of COVID-19.
- ★ Nearly one in three Rhode Island households can't afford adequate food.
- ★ The risk of hunger is highest for low-income families with children and for communities of color.
- ★ Demand for food assistance is increasing as critical COVID-19 relief programs and emergency benefits end.



The state's economy rebounded this year with lower unemployment and higher wages for many workers. But household budgets were stretched thin by rapid inflation in rent, fuel, and food.

From July 2021 to July 2022, food costs in Rhode Island went up **13 percent**.¹ At the national level, the Consumer Price Index for food at home similarly grew by 13.1 percent, the largest twelve-month increase in 40 years.² Rising prices make it harder for low-income and even moderate-income families to purchase all the food that they need.



Food prices went up 13% from 2021 to 2022



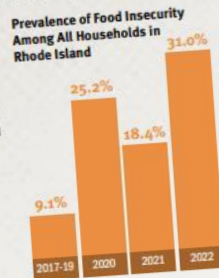
Heating oil prices went up 43% from 2021 to 2022³

Food Inflation Adds to Food Insecurity

High prices mean less food on the table for thousands of Rhode Island families. According to findings from the latest RI Life Index, conducted between April and June 2022, 31 percent of households were food insecure and unable to afford adequate food.⁴

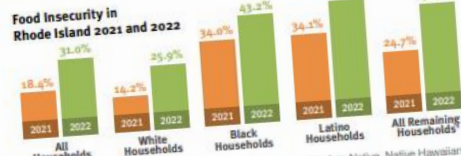
The RI Life Index surveys a random sample of more than 2,000 households in the state. It is an initiative of Blue Cross & Blue Shield of Rhode Island and the Brown University School of Public Health.

Food insecurity is now three times more prevalent than before the pandemic.



Disparities Persist

Results from the RI Life Index show that people of color are much more likely to be food insecure than White people. These racial and ethnic disparities reflect the recent toll of COVID-19 on the health and economic well-being of communities of color, as well as long-standing barriers to economic opportunity in Rhode Island.



⁴All remaining households includes Asian, Native American/Alaskan Native, Native Hawaiian/Other Pacific Islander, and more than one race/ethnicity.



RHODE ISLAND COMMUNITY
FOOD BANK

40 YEARS | ENSURING NO ONE GOES HUNGRY

**SHARE OUR
STRENGTH**



Policy Issue: Healthy School Meals for All

Margaret Read
Senior Manager, Policy and Research
Share Our Strength, No Kid Hungry

Establishing 2023 Council Priorities

Open Discussion

**Next Meeting:
Q1 IFNPAC
Tuesday March 7th
9:30am-11:00am**

**RHODE
ISLAND**