



IFNPAC Q3 Meeting

Interagency Food and Nutrition Policy Advisory Council

Tuesday, September 12th, 2023

9:30 – 11:00am

Rhode Island Commerce

**RHODE
ISLAND**

Welcome and Introductions

Department of Environmental Management (DEM)

Chair, Terry Gray, Director

Ken Ayars, Chief of Agriculture

Department of Health (RIDOH)

Randi Belhumeur, Health Program Administrator

RI Commerce Corporation (RICC)

Julianne Stelmaszyk, Director of Food Strategy

Department of Education (RIDE)

Jessica Patroliia, Child Nutrition Programs Coordinator

Department of Administration (DOA) *NEW MEMBER

Laura Hart, Policy Director

Department of Corrections (DOC)

Terrence McNamara, Administrator

Physical Resources

Governor's Office *NEW MEMBER

John Colantoni, Policy Advisor

Office of Healthy Aging (OHA)

Maria Cimini, Director

Department of Human Services (DHS)

Jenna Simeone, Assistant SNAP

Administrator

Agenda

1. Welcome & Introductions
2. Approve Q2 2023 Meeting Minutes
3. Key Findings from Relish Rhody Five Year Retrospective
4. Update on 2030 State Food Plan development
5. NEW State grant programs for food businesses
6. FY25 RI Food Policy Council policy priorities
7. Updates from RI Farm to School & RIDE Food System Projects
8. Public Comment



Key Findings of Five Year Impact of Relish Rhody Retrospective (2017 – 2022)

Juli Stelmaszyk, Food Strategy
RI Commerce

RETROSPECTIVE



Rhode Island State Food Strategy 5 Year Report

2017-2022



Rhode Island's 1st Statewide Food Strategy 2017



AN ACTIONABLE VISION FOR FOOD IN RHODE ISLAND

INTEGRATED FOCUS AREAS

1. PRESERVE & GROW AGRICULTURE AND FISHERIES INDUSTRIES
2. ENHANCE THE CLIMATE FOR FOOD & BEVERAGE BUSINESSES
3. SUSTAIN & CREATE MARKETS FOR RI FOOD PRODUCTS
4. ENSURE FOOD SECURITY FOR ALL
5. MINIMIZE & DIVERT WASTED FOOD



Led by the Director of Food Strategy through an inter-agency partnership



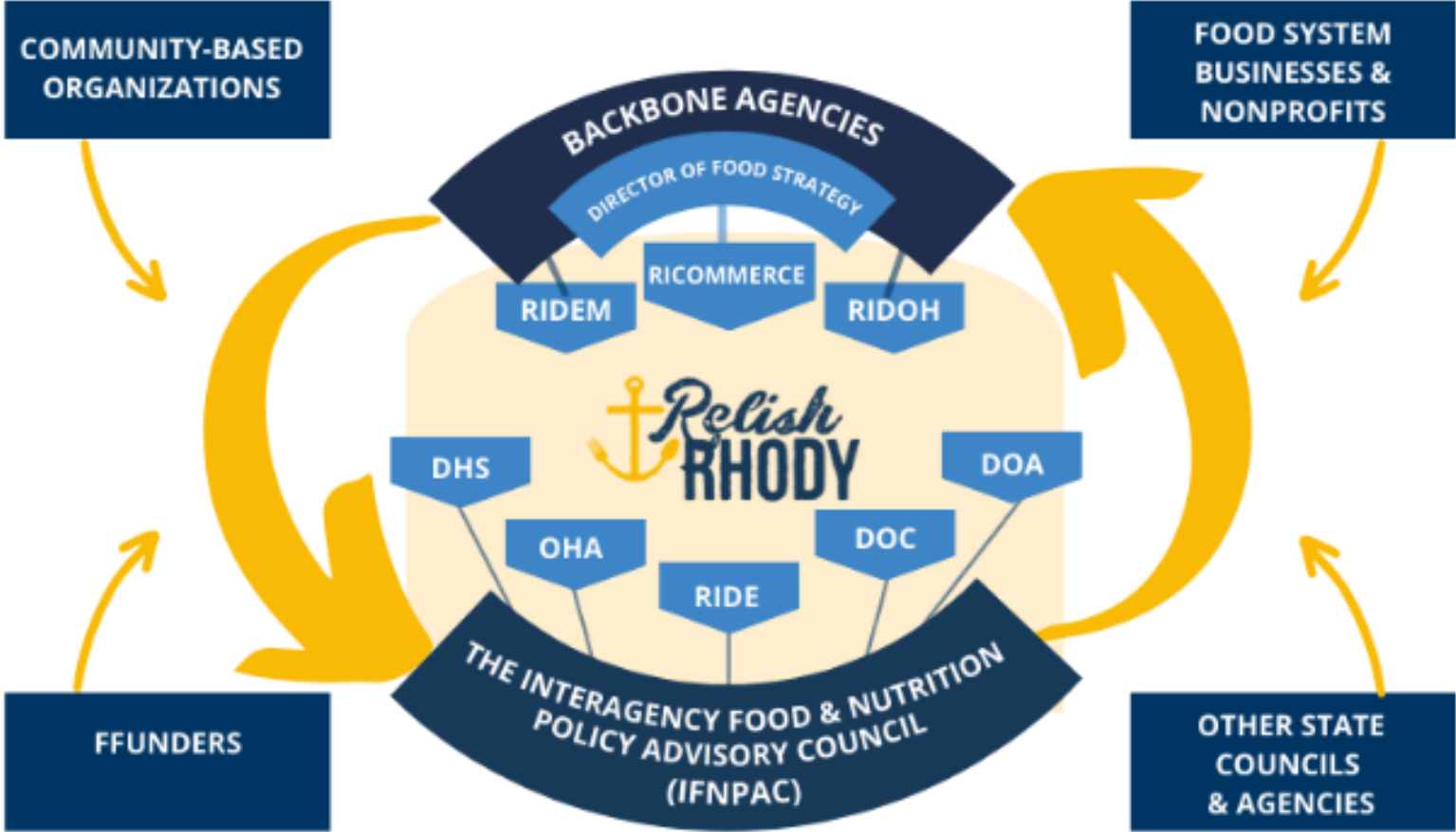
RHODE ISLAND
COMMERCE



Key Findings: 5 Year Retrospective



Participation & Implementation Partners

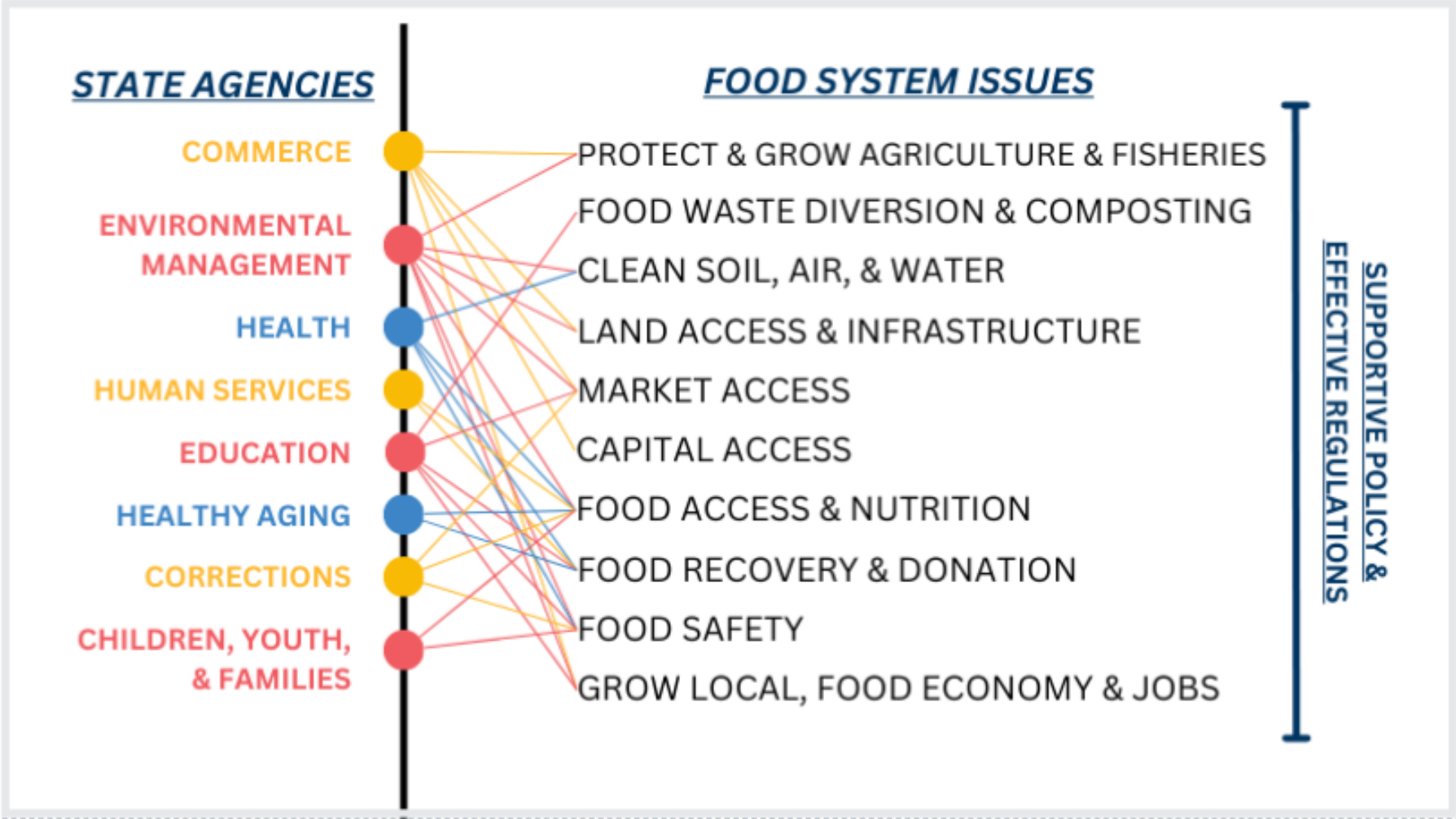


This map illustrates the interconnectedness and roles that State agencies play in addressing food system issues, policies and programs.

Key Findings: 5 Year Retrospective



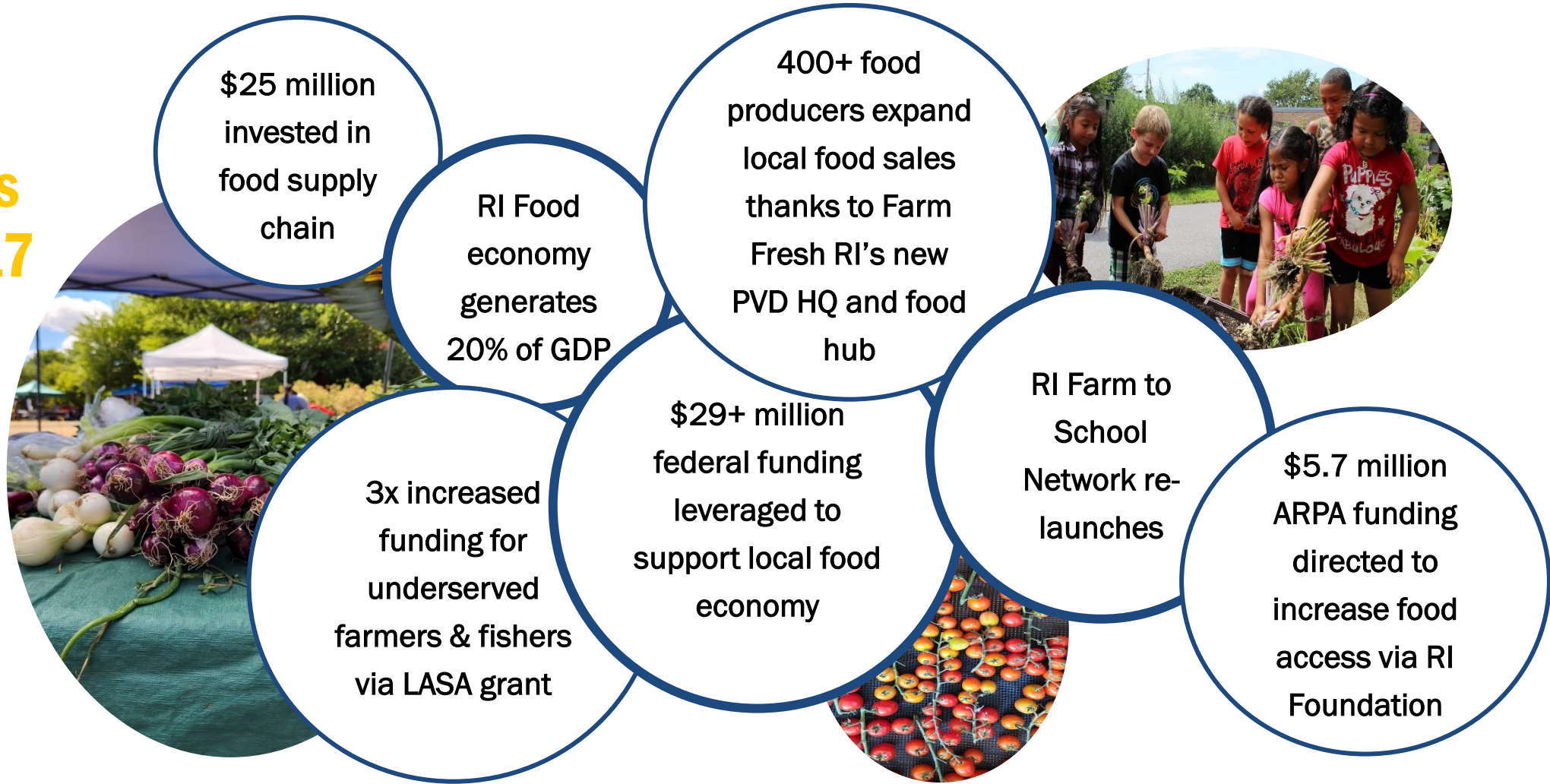
The Role of IFNPAC Agencies



Key Findings: 5 Year Retrospective



Noteworthy Developments since the 2017 launch



Key Developments since 2017 Food Strategy

Catalytic Investments

- The Family Cake Co.
- Branchfood
- The Compost Plant
- RI Seafood Marketing Collaborative
- Farm & Ranch Stress Assistance Network

Policy Gains

- Investment in Farm & Fishery Viability
- Addressing food insecurity
- Action towards climate change
- Food Waste Diversion and Waste Diversion
- Supports for Food & Beverage Businesses

Collaboration & Coordination

- LASA Grant
- Hunger Elimination Task Force
- Farm to Institution New England
- RI Farm to School Network
- EC4
- New England Feeding New England

Key Findings: 5 Year Retrospective



Current Conditions – WHY NOW?

- RI food economy is growing, but not for all
- Pandemic shifted consumer behaviors and exacerbated food insecurity
- Major food supply chain disruptions
- Climate change demands urgency
- Addressing systemic racism and inequities is front and center
- Leadership changes
- Regional food planning efforts towards 2030
- Food systems is now a national and global focus

Gaps & Opportunities

- Racial inequities and health disparities
- Gaps in support for second-stage food businesses
- Underinvestment in farmland viability and food solutions to climate change

Key Findings: 5 Year Retrospective



LOOKING AHEAD:

Priorities for 2030

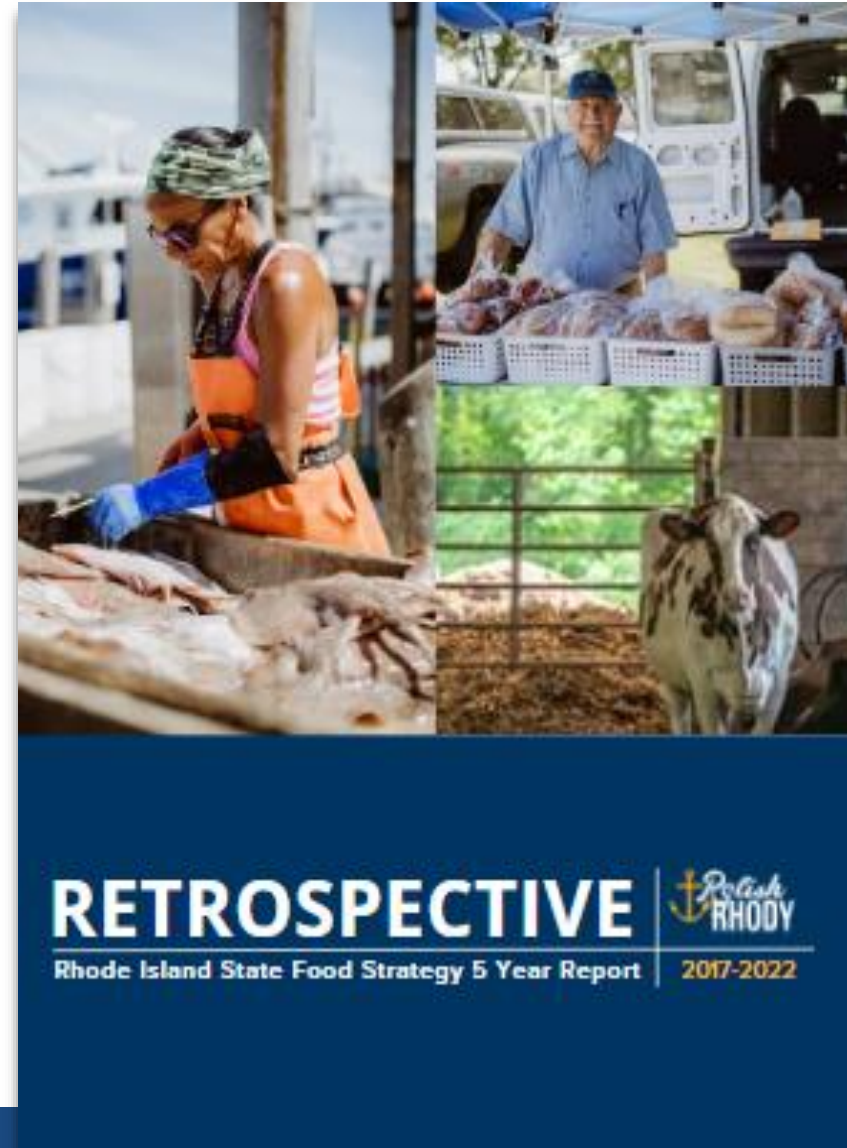
“My biggest disappointment was that Relish Rhody 1.0 didn't address racial equity as a priority and spoke sparingly about climate change.”

- Food System Stakeholder

- Prioritize Nutrition Security & Climate change
- Invest in Middle of the Supply Chain Infrastructure
- Promote and Encourage Conditions for Community Food Sovereignty
- Leverage Shared Regional Assets and Efforts
- Support Targeted Policy & Incentives to Achieve Goals
- Grow More Food, Affordably and Sustainably
- Center Equity and Inclusion in the Food System
- Strengthen Collaboration across Government and Private Sector

Exciting Time to Align with regional and state planning

- New England Feeding New England 30 x 30 goal
- Emergency Food Preparedness Plan
- [Rhode Island Climate Strategy 2025](#)
- [Healthy Eating & Active Living \(HEAL\) Program](#) at RIDOH
- Comprehensive [Economic Development Strategy](#) by Rhode Island Commerce
- [Rhode Island Farm to School Network Action Plan](#)
- Comprehensive [Solid Waste Management Plan 2038](#) led by DEM
- [Rhode Island 2030](#): Charting a Course for the Future of the Ocean State working document led by the Governor's Office



*Will be available
end of September
online at
RelishRhody.com*



Update on 2030 RI Food Strategy Planning

Juli Stelmaszyk, Food Strategy
RI Commerce

**RHODE
ISLAND**

STATUS UPDATE

RI Food Strategy 2030

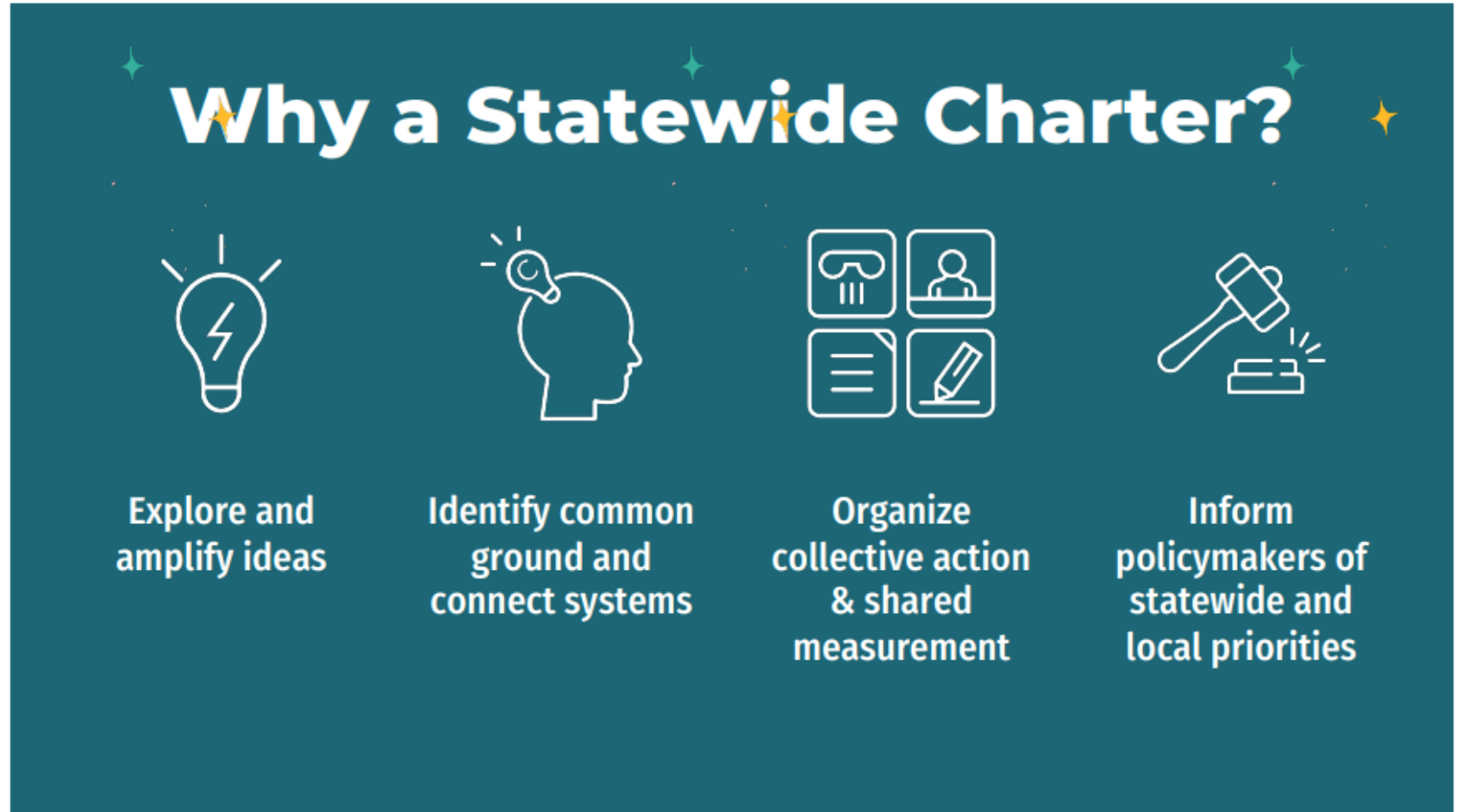
Developing a renewed state plan for Rhode Island

Do state food plans matter?

Systems-based and cross-sector, a holistic treatment of the entire food system

18 states in the US have state food plans

Why a Statewide Charter?



The infographic is set against a dark teal background with white text and icons. It features four columns, each with an icon at the top and a text description below. The icons are: a lightbulb with a lightning bolt, a head profile with a lightbulb inside, a 2x2 grid of icons (handshake, person, document, pencil), and a gavel striking a block.

- Explore and amplify ideas**
- Identify common ground and connect systems**
- Organize collective action & shared measurement**
- Inform policymakers of statewide and local priorities**

[MSU Center for Regional Food Systems Webinar July 2021](#)

Governance Structure – Planning

PROJECT STEERING COMMITTEE

State Agencies

RI Commerce
RIDOH
RIDEM

Community Representatives

RI Food Policy Council
Narragansett Indian Tribe
Northeast Sustainable Ag Working Group (NESAWG)
& Native Green

ADVISORY BOARD (30 members)

industry/business partners, academia, policy, public planning healthcare, state government, community organizations, regional organizations, urban agriculture, education, philanthropy, etc

SUPPORT TEAM

Strategic planning consultant
DEI consultant
Project manager

FUNDERS

Henry P. Kendall Foundation
Rhode Island Foundation
RI Commerce

INTERAGENCY FOOD NUTRITION & POLICY ADVISORY COUNCIL

COMMUNITY PARTNERS

Federally Recognized Narragansett Indian Tribe
Communities of Color
Subject Matter Experts in food system issues
Regional food system networks (NEFNE)
Community/grassroots organizations
Others TBD

Guiding Principles (so far...)

- REGIONAL RESILIENCE
- EQUITY, DIVERSITY & INCLUSIVITY
- COMMUNITY & INDUSTRY NEEDS
- ENVIRONMENTAL SUSTAINABILITY & CLIMATE CHANGE IMPACTS
- METRICS & IMPACT DRIVEN
- COLLECTIVE IMPACT & COLLABORATION
- SUSTAINABLE AND EQUITABLE ECONOMIC DEVELOPMENT



TIMELINE

14-month process will engage subject matter experts, community organizations, government, academia and industry partners



JAN 2023

5 Year Retrospective started

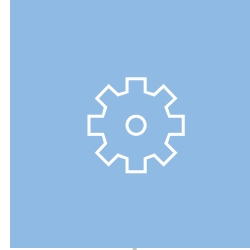
JUNE 2023

Project kick-off with Advisory Board



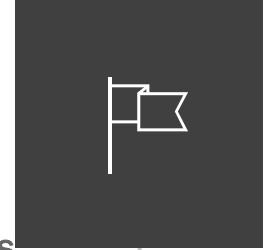
OCT 2023 – FEB 2024

Research & Stakeholder Engagement
20 subject matter experts will write “Food System Briefs”



FEB - MAY 2024

Draft plan developed
Strategy sessions with key stakeholders
Statewide summit/listening sessions
Public comment



AUG 2024

Plan complete!
Implementation begins

WILL ALIGN WITH....



JAN 2024
RI Farm to School
Network Action Plan

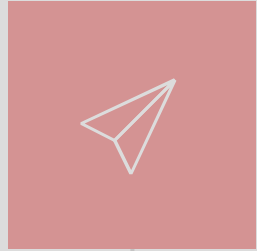
SUMMER 2024
Emergency Food
Preparedness &
Resiliency Plan

2025
RI Climate Strategy

2038 Solid Waste
Management Plan

TIMELINE

14-month process will engage subject matter experts, community organizations, government, academia and industry partners

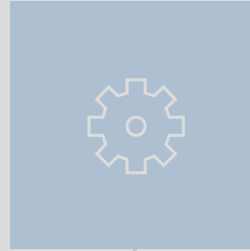


JAN 2023

5 Year Retrospective started

JUNE 2023

Project kick-off with Advisory Board



OCT 2023 – FEB 2024

Research & Stakeholder Engagement
20 subject matter experts will write “Food System Briefs”

FEB - MAY 2024

Draft plan developed
Strategy sessions with stakeholders
Statewide summit
Public comment



- Component of statewide food strategy
- Funded by ARPA relief via RIF
- Planning led by RI Food Policy Council and State gov partners
- Focus on emergency food system, preparedness and ability to build more resilience into system for future supply chain disruptions. Will answer questions like:
 - *How prepared are we for the next natural disaster?*
 - *What risks/vulnerability exist in the food system?*
 - *How might we build a better safety net?*
 - *Where are there gaps in infrastructure? Relationships?*
 - *How might we build a more resilient food supply chain and strengthen community resilience?*

WILL ALIGN WITH....



JAN 2024
RI Farm to School Network Action Plan

SUMMER 2024
Emergency Food Preparedness & Resiliency Plan

Status Update: Relish Rhody 2.0 Planning



- ✓ Funding awarded Henry P. Kendall and RI Foundation
- ✓ 5 Year Retrospective complete – published in September
- ✓ June 2023 Advisory Board members gathered to “kick-off” the planning process
- ✓ Strategic planning consultant, Northbound Ventures hired
- ✓ Project manager hired
- ✓ Local Food Counts Study underway to measure local food economy





NEW
Grant Funding Opportunities for
Food Businesses
2023-2024

Kara Kunst, Executive Office of Commerce
Ananada Fraser, RIDEM, Div. of Agriculture

RHODE
ISLAND

NEW State Food & Ag Funding Opportunities

LASA

Local Agriculture & Seafood Act Grant

- RIDEM grant program
- Capital grants up to \$20,000 for small, new/beginning and disadvantages farmers to increase production, new local food products, food safety and sales
- Fishermen can use for marketing only
- Total Available: ~\$600,000
- Application: Nov/Dec

RFSI

Resilient Food System Infrastructure Grant

- RIDEM grant, via USDA for equipment and infrastructure
- “mid-supply chain” entities
- \$10k – 100k for equipment
- \$100k+ for infrastructure projects

MBA

Minority Business Accelerator Grant & Technical Assistance

- Commerce grant for minority businesses
- Technical Assistance through [approved intermediaries](#)
- Direct grants to minority businesses
- Total available: \$1.2 million
- Grants up to \$20,000 (pending eligibility criteria)
- Application : ~Feb 2024/Mar 2024

RI Rebounds

RI Rebounds Technical Assistance

- Commerce grant, administered via Skills for RI to provide up to \$10,000 in business assistance services to small businesses
- Services could include succession planning, marketing, accounting/finance, business strategy, HR support, etc
- Application: open now
- More info [here](#)

RFSI Grant Program Overview and Scope

- RFSI is intended to serve middle-of-the-supply-chain needs for locally or regionally produced food products, including specialty crops, dairy, grains for human consumption, aquaculture, and other food products.
- This program's goal is to support food system crops and products meant for human consumption (excluding meat and poultry products)
- RIDEM will administer a competitive process to award Infrastructure Grants and Special Equipment Only Grants. Over \$1.5 million in grants will be awarded

	Infrastructure Grants	Equipment Only Grants
Project Min - Max	\$150,000 - \$1 Mil**	\$20,000 - \$100,000
Match Required	Yes (1:1)	None
Approx Allocation	80%	20%





RFSI Grant Program Timeline

- Fall 2023 - RFSI Request for Applications utilizing the State of RI GMS
Technical assistance will be provided through the RFA period
- Winter 2023/24 – RFSI Review Committee will review score applications
- March 2024 – RIDEM will give recommended RFSI Projects to USDA for approval
- Summer 2024 – Grants approved, and work can begin
- May 2027 – All work must be complete (no extensions will be given)



RFSI Grant Supply Chain Coordination

- Approximately 20% of funds will be used for State Led Supply Chain Coordination.
- This will focus of the following ;
 - Technical Assistance for Middle-Supply chain farms/ firms
 - Providing business market development
 - Providing business coaching
 - Collaboration on regional mapping of supply distribution (lead state New England Food System Planners Partnership)
 - Hiring a Supply Chain Coordinator who will;
 - Build connections between buyers and supplies
 - Identify barriers to the RI local food system
 - Serve as a point of contact for middle of the supply chain entities for market development
 - Leverage current and develop soft infrastructure (value-chain coordination) needed to compliment the hard infrastructure outlined in infrastructure grants





RI DEM – Division of Agriculture

Local Agriculture and Seafood Act (LASA) Grants

RHODE ISLAND



LASA Overview

- The Local Agriculture and Seafood Act (LASA) Grant Program provides grants that directly benefit and strengthen the local food system in Rhode Island.
- The RIDEM Division of Agriculture was funded at \$700,000 for the FY24 grant round
- The maximum grant award available to a farmer, individual, business (e.g., LLC) or non-profit organization is \$20,000





LASA Program Timeline

- Fall 2023 - LASA Request for Applications utilizing the State of RI GMS
Technical assistance will be provided through the RFA period
- Winter 2023/24 – LASA Review Committee will review score applications
- March 2024 – RIDEM will notify successful applicants
- May 2024 – All LASA Grantee have contracts executed with DEM
- Summer 2024 – FY24 LASA recipients receive funds and begin work
1.5-year project period





LASA Program Priorities

All LASA Funding Priorities are still to be finalized by the LASA Review Committee but is likely to include;

- Support the entry, growth, and/or sustainability of small or beginning agriculture producers, aquaculture producers and fishers.
- Support agriculture producers, aquaculture producers and fishers that are Black, Indigenous, and People of Color (BIPOC).
- Support the development of new marketing, promotion, sales, and/or distribution channels.
- Support the development of new products, including value-added processing capacity.
- Protect the future availability of agricultural land for producers, including farm transition planning and implementation.
- Assistance with on-farm Food Safety improvements





FY 25 RI Food Policy Council Legislative Priorities

Josh Daly, RI Food Policy Council



RI Farm to School & RIDE Food System Project Updates

Jack Sisson, RIDEM, Div. of Agriculture
Jessica Patroliia, RIDE, School Nutrition



**RHODE
ISLAND**

Growing Farm to School in Rhode Island

DEM awarded USDA funding (\$259K) towards RI farm to school initiatives

The RI Farm to School Network, led by State Agency partners including RIDE, RI DEM, RIDOH and RI Commerce, will continue to support F2S efforts with a focus on procurement and value chain support.

- Hired State's first-ever Farm & Sea to School Coordinator
- Action plan to guide the state's F2S efforts for the next 3-5 years
- Development and expansion of the RI F2S Network
- Increase local procurement from farms and fishers



RI Farm to School Calendar of Events

- October 1-31 Happy Farm to School Month!
- October 26 Rhode Island Healthy School Coalition Breakfast for School Wellness Leaders ([click here](#) for more info)
- November 9th RIF2S Network Stakeholder & Strategic Planning Gathering
3 to 6pm at Farm Fresh Rhode Island
- It's Farm to School Census Time! More details are available [here](#). The census will be available in October and is to be completed by the School Food Authority contact, with the support of others in their district who participate in any farm to school activities. Be on the lookout for an email from your RI Dept of Education Farm to Child Nutrition Program Specialist Caitlin Mandel for helpful reminders and updates!
- Winter Procurement Gathering: Date TBD

Join the Growing [Farm 2 School Network \[rifarmtoschool.org\]](http://rifarmtoschool.org) in Rhode Island!



RI Farm to School Strategic Planning Process

- The Rhode Island Farm to School Network kicked off a planning process in June to develop a Farm to School “Action Plan” to guide our network priorities and strategies for the next 5 years. Our goal is a thriving Farm to School network that honors Rhode Island’s educational infrastructure as a mini food system, with diverse opportunities for engagement with farmers, educators, and families. This process has been led by Susan Gunter of the Gunter Group and a strategic planning committee. .
- Over the last few months, we have been talking to a variety of individuals that represent the three “C’s” of farm to school programming (Cafeteria, Classroom, and Community) and conducting research to better understand how the Farm to School Network and Leadership Council can help schools, students, farmers and the community at-large experience the benefits of farm to school programming. This information will be used to inform our Action Plan, which we expect to gather input on during the first convening of the Farm to School Network on November 9, 2023.





Welcome Farm and Sea to School Director: Stephanie Pike

- As Rhode Island's Farm and Sea to School Director, Stephanie will be working statewide to increase Rhode Island grown, made, and harvested food in school meals, and promote Farm to School activities in school districts. Stephanie will be a resource for Rhode Island Producers to enter into the Farm to School market channel.

- Work with Steph on:**

- 1. What are the opportunities and challenges in the Farm to School market?
- 2. How do I get into the Farm to School market either in selling or education?
- 3. Connections to local schools and distributors who are selling into schools
- 4. Product planning and processing needs for schools
- 5. Any curiosities you have about Farm to School!





Welcome Farm to Child Nutrition Programs Specialist: Caitlin Mandel

- As the Farm to Child Nutrition Program Specialist, Caitlin will collaborate with other Offices with RIDE as well as community partners to advance farm to school efforts and develop and disseminate farm to school training materials and resources .
- Work with Caitlin on integrating Farm to School into your broader school community, including:
 - Outdoor learning spaces & school gardens
 - Food systems lesson planning
 - Farm to School grant opportunities
 - Food waste and other sustainability



October is Farm to School Month!

- October is National Farm to School Month and Wednesday, **October 19th is Apple Crunch Day!** Help celebrate National Farm to School month and raise awareness for Farm to School in RI by taking part in a statewide “Apple Crunch” event and related activities.
- 2023 Proclamation Signing Event - TBD!

**NATIONAL
FARM to
SCHOOL
MONTH**



Farm to School Month

State of Rhode Island GUBERNATORIAL PROCLAMATION Farm to School Month
WHEREAS, Rhode Island's school nutrition professionals, farmers and farm workers are recognized as essential and celebrated for their leadership ensuring the students of Rhode Island are fed, even in times of emergency; and WHEREAS, Farm to School programs connect Rhode Island schools and Rhode Island farms to provide access to fresh, high quality, local food in the school meal while providing experiential food and agriculture education that can lead to permanent improvements in the diets of children; and WHEREAS, ensuring high nutrition standards & education in schools and childcare facilities and maximizing participation in federal meal programs are recommendations within Relish Rhody, the Rhode Island food strategy; and WHEREAS, interest and investment in Farm to School programs have expanded across the state of Rhode Island, consistently for the last decade; and WHEREAS, the USDA Farm to School Census ranked Rhode Island as a national leader in district engagement in Farm to School programs; and WHEREAS, Rhode Island school cafeterias are an important market that can bring economic development opportunities to our local agricultural economy and contribute to vibrant communities; and WHEREAS, food, nutrition and gardening education programs empower students to make informed choices and form lifelong healthy habits; and WHEREAS, Farm to School recognizes and respects the vital role agriculture and local food plays in the culture, heritage and economy of Rhode Island; and WHEREAS, federal legislation designated October as Farm to School month for the purpose of promoting the importance of farm to school activities among students, teachers, school administrators, citizens, state and federal agencies and all concerned parties. NOW, THEREFORE, I, Daniel J. McKee, Governor of the State of Rhode Island, do hereby proclaim October 2021, as: Farm to School Month in the state and encourage all residents to join me in recognizing the value of investing in high quality local food and food education in our schools. Given under my hand and the great seal of the State of Rhode Island, this 151 day of October, 2021.





Surplus Crop Form

This form is intended to connect Rhode Island farmers who have surplus crops with local markets to reduce food waste and increase access to healthy fruits and vegetables.

This initiative is supported by the [RIDEM Division of Agriculture](#), the [RI Farm to School Network](#) which engages partners across Rhode Island to develop, expand and strengthen local procurement, education, and gardening initiatives to benefit children and youth throughout the state, and [Hopes Harvest](#) which mobilizes volunteers to harvest surplus fruits and vegetables from farms, contracts with local growers, and purchases surplus produce.

This form will connect your product to one of these various market channels. Please provide the information below to get started.

Contact *

First

Last

Business/Farm Name *

Email

Phone Number *

 - -

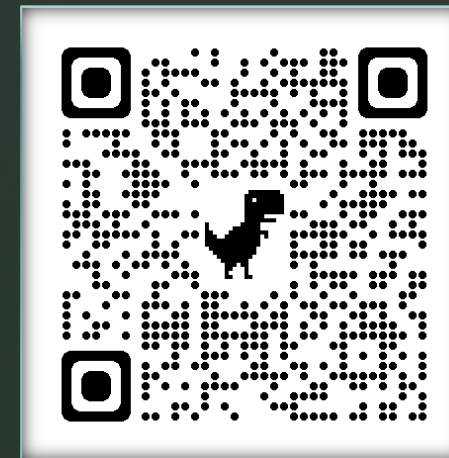
###

###

####

RI Farm to School: Surplus Crop Form

- RIDEM in partnership with the RI Farm to School Network, and Hopes Harvest have developed this form to connect producers with RI Markets for their products
- Product may be donated or purchases through this connection





**RHODE
ISLAND**

Food Systems Initiatives

RI Department of Education
Interagency Food and Nutrition Advisory Council (IFNPAC)
September 12, 2023



Supply Chain Assistance (SCA) & Local Food for Schools (LFS)

Over the past several years, the USDA Food and Nutrition Services (FNS) has made several funding streams available to state agencies to overcome supply chain challenges and support local food systems.

**\$9.2
Million**

Supply Chain Assistance Direct Funding

Paid directly to schools to support the purchase of unprocessed or minimally processed foods. Payments made from April 2022 through Nov 2023 (planned).

**\$1
Million**

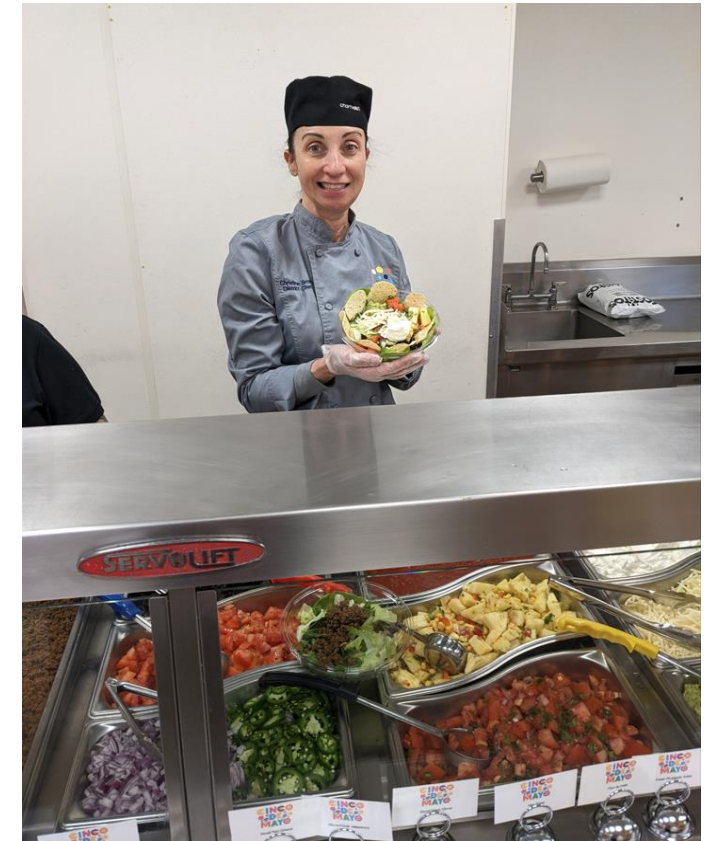
Supply Chain Assistance Local Food Hub Funding

Distributed to schools via a partnership with Farm Fresh RI to support the purchase of locally grown/produced unprocessed or minimally processed foods. Purchases ongoing through September 30, 2024.

\$560,189

Local Food for Schools Funding

Distributed to schools via a partnership with Farm Fresh RI to support the purchase of locally grown/produced unprocessed or minimally processed foods from underserved producers. Purchases ongoing through February 24, 2024.



Technology Innovation Grant

Starting in FFY21, the USDA Food and Nutrition Services (FNS) made funds available non-competitively to state agencies to develop and improve technology systems related to the Child Nutrition Programs.

Rhode Island Farm to School LOCAL PROCUREMENT TRACKING				
Rhode Island Department of Education				
School District Name:				
School Year:				
Primary FNS Contact Person:				
Contact Phone Number:				
Contact Email:				
Summary Local Spend by Month		Summary Local Spend by Purchase Category		
Month	Tier 1	Tier 2	Tier 3	Total
July	\$149.50	\$1,500.00	\$0.00	\$1,649.50
August	\$1,000.00	\$0.00	\$0.00	\$1,000.00
September	\$1,000.00	\$500.00	\$100.00	\$1,600.00
October	\$0.00	\$0.00	\$0.00	\$0.00
November	\$0.00	\$0.00	\$0.00	\$0.00
December	\$0.00	\$0.00	\$0.00	\$0.00
January	\$0.00	\$0.00	\$0.00	\$0.00
February	\$0.00	\$0.00	\$0.00	\$0.00
March	\$0.00	\$0.00	\$0.00	\$0.00
April	\$0.00	\$0.00	\$0.00	\$0.00
May	\$0.00	\$0.00	\$0.00	\$0.00
June	\$0.00	\$0.00	\$0.00	\$0.00
				\$4,249.50

Local Procurement Tracking

- Specification development for an electronic platform to track local purchasing in school meals
- Hoping to move into an implementation phase in 2024
- Local and national interest and potential partnerships

Increasing Food Access

- Statewide electronic application for free or reduced-price school meals
- Increased opportunity for referrals to community partners providing social services



Unite Us Electronic School Meal Benefit Application

Welcome to the Unite Us Centralized Electronic Meal Benefit Application!

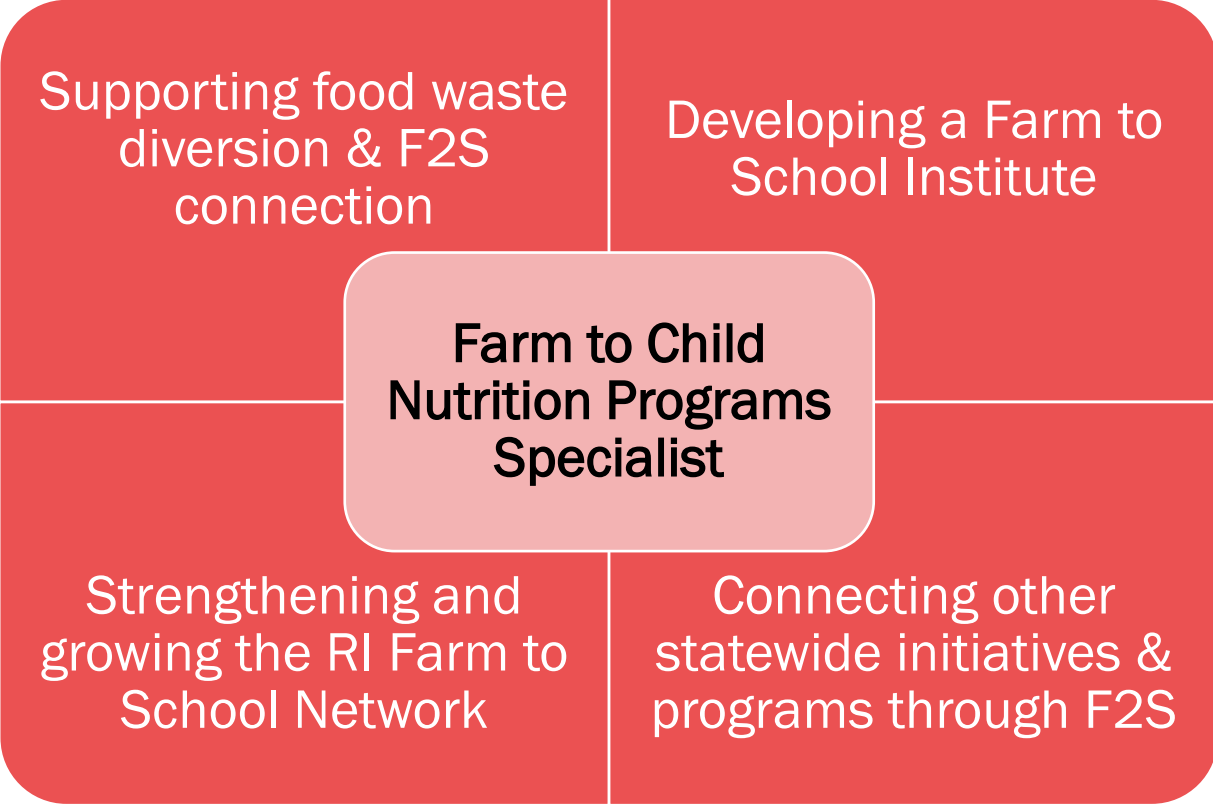
Use of the electronic meal benefit application is optional for families with a child attending a school in one of the districts listed in the drop-down menu within the form. All schools will continue to accept paper-based applications, which can be completed and returned directly to your child's school.

All information entered into the form below will be submitted to the RI Department of Education (RIDE) via the secure Unite Us platform. RIDE will then route the application directly to the school/district indicated within your application where it will be accessible only by the determining official for schools meals, unless you have specifically authorized additional disclosures. Your child's school is responsible for making all determinations related to free or reduced-price meals and you should follow up with them directly with any questions related to this process.

Note: the electronic application for free or reduced-price meals below will require applicants to enter the date of birth for the individual completing the form. While this field is required in order to submit an application through the electronic form below, the data entered will have no bearing on the determination of your application and any applicants who do not wish to disclose this data may still apply for free or reduced-price meals by completing and submitting a paper application.

Farm to School Formula Grant

As part of the USDA's efforts to improve food and agricultural supply chain resiliency, RI was awarded \$681,901 in Farm to School Formula Grant funding for activities through September 30, 2026.



about the FTS INSTITUTE CORE COMPONENTS



FY23 Team Nutrition Grant

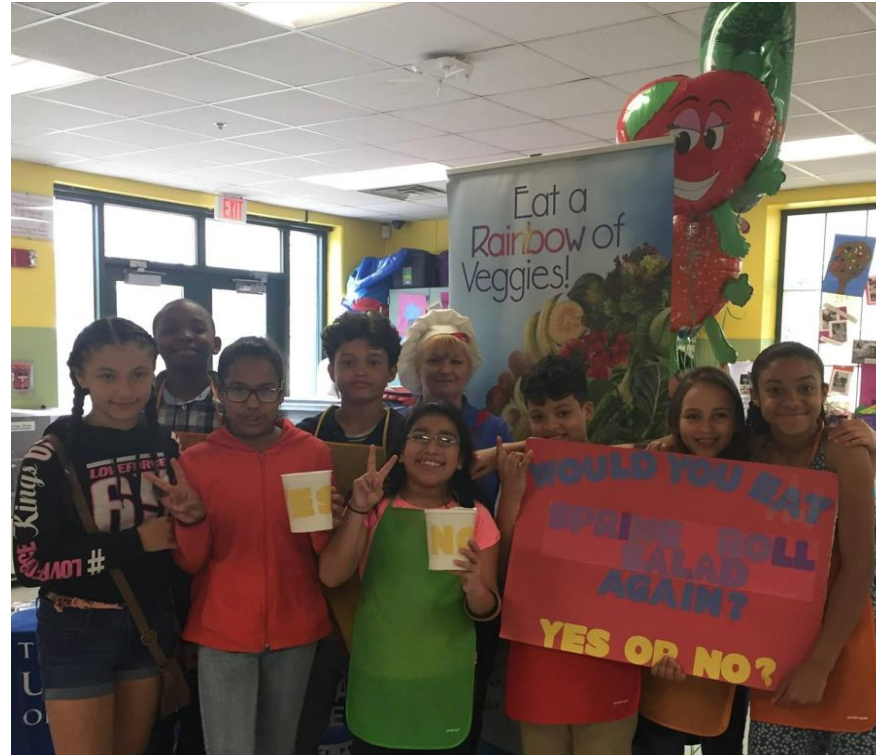
Empowering students to take charge with healthy, appealing, & culturally appropriate school meals.

URI SNAP-ED

Revise and expand upon the existing Students Take Charge Program to reinforce service of culturally appropriate school meals

Farm Fresh RI

Expand the reach of STC beyond those schools that are eligible for SNAP-Ed intervention



Johnson & Wales University

Provide professional training and technical assistance to preserve the quality and cultural integrity of family recipes

RI Healthy Schools Coalition

Bring nutrition education and advocacy messages of the STC program into the broader school community through the Health & Wellness Committee

Thank You



www.rifarmtoschool.org

**RHODE
ISLAND**