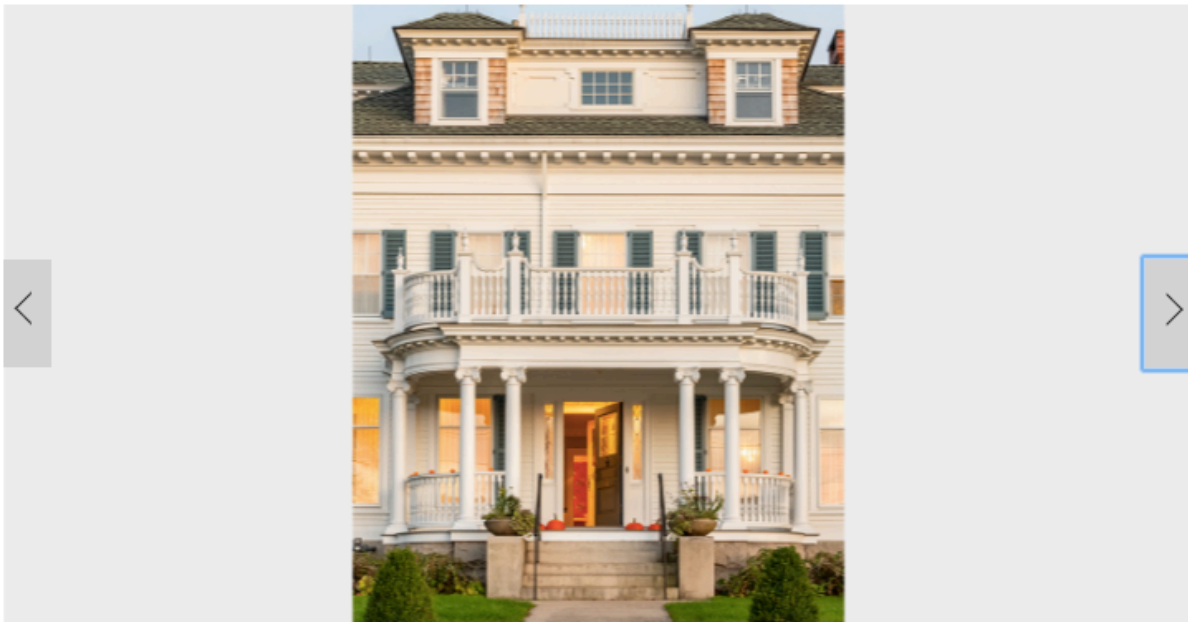


## 20 Quaint New England Inns Perfect for Watching the Leaves Change

letters@purewow.com (Lindsay Cohn) 5 days ago



16/21 SLIDES © Courtesy of Sarah Baumberger Photography

Full screen 

### Margin Street Inn (Westerly, Rhode Island)

Poised on the banks of the Pawcatuck River, Margin Street Inn resides in the town of Westerly, near Watch Hill (where Taylor Swift has a home). Proximity to T-Swizzle aside, the property flaunts seven acres of manicured grounds, tasteful rooms and a dock.