



YOUR PERFECT BLUE RIDGE MOUNTAIN TOUR DESTINATION

40+ Hotels · 5,000+ Rooms!



TOUR CONTACT

Lori Phillips, Sales & Services Manager

lphillips@visitroanokeva.com

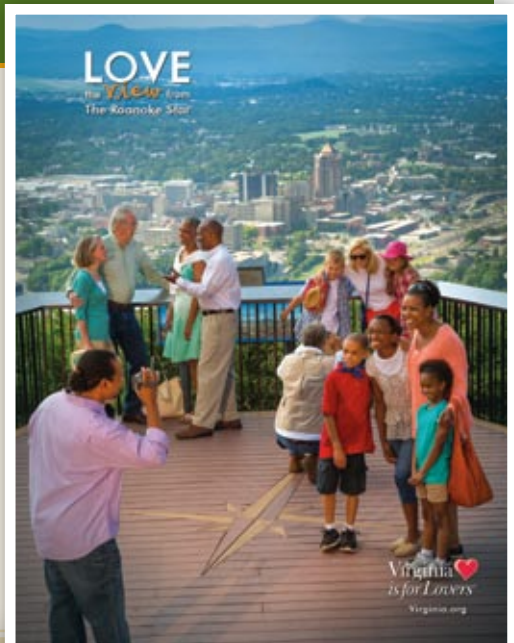
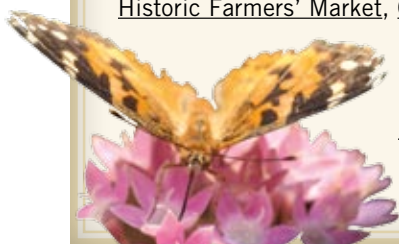
phone: 800-635-5535, ext. 125



Urban Sophistication Amid Majestic Mountains

The Roanoke Valley, the largest metro in western Virginia, is ideally located in the Blue Ridge Mountains just off Interstate 81 and the Blue Ridge Parkway. The area is known for its railroad heritage, historic market district and beautiful scenery. Book a step-on guide for a personalized tour.

Highlights include – Roanoke Star & Overlook, Virginia Museum of Transportation, Taubman Museum of Art, O. Winston Link® Museum, Historic Farmers' Market, Center in the Square (including a Butterfly Garden), Blue Ridge Parkway and many more options around the region such as the National D-Day Memorial, Natural Bridge and Booker T. Washington National Monument.



Roanoke Valley Convention & Visitors Bureau – www.visitvablueridge.com

101 Shenandoah Ave. NE – Roanoke, VA 24016-2044 – phone: 540-362-7848, ext. 125 – lphillips@visitroanokeva.com

Suggested Itineraries

Virginia's Blue Ridge Tour

DAY ONE

Meet and Greet Sightseeing Tour
 Roanoke Star & Overlook View Stop –
webcam (www.roanokeva.gov/starcam)
 Historic Farmers' Market Shopping
 and Lunch (*maps and discounts provided*)
 #1 Fire Station and Railwalk Tour
 Virginia Museum of Transportation
 Dinner package at the O. Winston Link®
 Museum with private tour



DAY TWO

National D-Day Memorial
 Virginia Dare Lunch Cruise on Smith Mountain Lake
 Booker T. Washington National Monument Tour
 Homestead Creamery – *a homemade ice cream treat*
 Mill Mountain Theatre or Showtimers – *Live Evening Performance*

DAY THREE

Blue Ridge Parkway – *scenic drive (north or south)*
 Mabry Mill – *most photographed spot on the Parkway*
 Chateau Morrisette Winery Tasting or Natural Bridge or
 Peaks of Otter tour and lunch

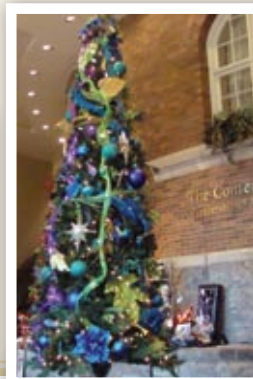
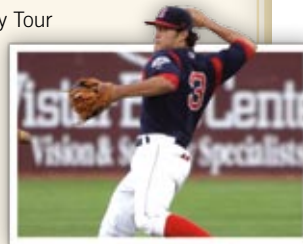
ADDITIONAL SUGGESTED ITINERARIES

Southern Cuisine Culinary Tour
 Student Adventure Tour
 African-American Heritage Tour



Group Events

Virginia Garden Tours – Roanoke Valley Tour
 Vinton Dogwood Festival
 Strawberry Festival and Chili Cook-off
 Juneteenth Celebration
 Salem Red Sox Baseball Game
 Salem Fair & Exposition
 Blue Ridge Folklife Festival
 Fashions for Evergreens – Christmas Tree Display
 Dickens of a Christmas
 Visit www.visitvablueridge.com
 for more events and details

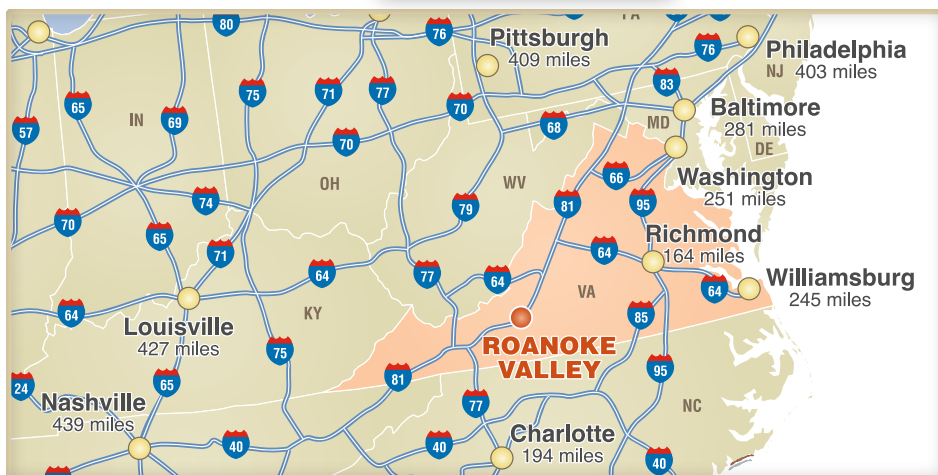


"What's New"

2016 Mill Mountain
 Theatre season

Visit the new Roanoke
 Pinball Museum

Exciting concerts and
 events at Elmwood Park



Destination Facts

POPULATION:

307,000 (MSA)

LOCATION:

Interstate 81

Main Exit - 143 (Interstate 581)

Blue Ridge Parkway

Mileposts 106, 112, 120, 121

VIRGINIA IS FOR
 MOUNTAIN LOVERS

Roanoke Valley Convention & Visitors Bureau – www.visitvablueridge.com

101 Shenandoah Ave. NE – Roanoke, VA 24016-2044 – phone: 540-362-7848, ext. 125 – lpillips@visitroanokeva.com